



Full wwPDB X-ray Structure Validation Report ⓘ

Aug 9, 2020 – 07:48 PM BST

PDB ID : 6EZ9
Title : X-ray structure of human glutamate carboxypeptidase II (GCPII) - the E424M inactive mutant, in complex with a inhibitor JHU3372
Authors : Barinka, C.; Novakova, Z.; Motlova, L.
Deposited on : 2017-11-14
Resolution : 1.61 Å(reported)

This is a Full wwPDB X-ray Structure Validation Report for a publicly released PDB entry.

We welcome your comments at validation@mail.wwpdb.org

A user guide is available at

<https://www.wwpdb.org/validation/2017/XrayValidationReportHelp>

with specific help available everywhere you see the ⓘ symbol.

The following versions of software and data (see [references ⓘ](#)) were used in the production of this report:

MolProbity : 4.02b-467
Mogul : 1.8.5 (274361), CSD as541be (2020)
Xtriage (Phenix) : 1.13
EDS : 2.13.1
buster-report : 1.1.7 (2018)
Percentile statistics : 20191225.v01 (using entries in the PDB archive December 25th 2019)
Refmac : 5.8.0158
CCP4 : 7.0.044 (Gargrove)
Ideal geometry (proteins) : Engh & Huber (2001)
Ideal geometry (DNA, RNA) : Parkinson et al. (1996)
Validation Pipeline (wwPDB-VP) : 2.13.1

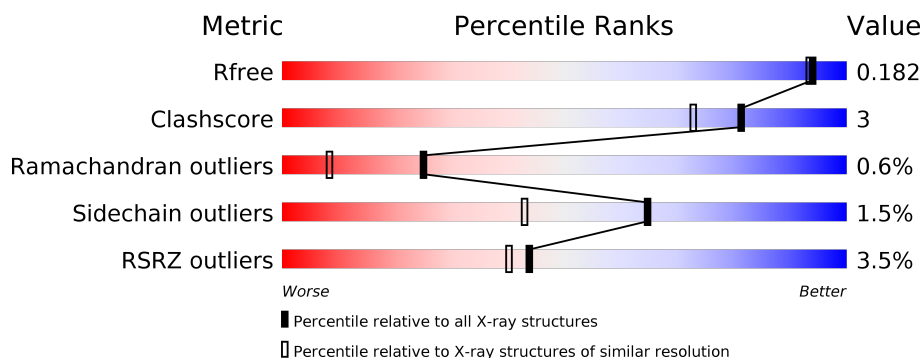
1 Overall quality at a glance

The following experimental techniques were used to determine the structure:

X-RAY DIFFRACTION

The reported resolution of this entry is 1.61 Å.

Percentile scores (ranging between 0-100) for global validation metrics of the entry are shown in the following graphic. The table shows the number of entries on which the scores are based.



Metric	Whole archive (#Entries)	Similar resolution (#Entries, resolution range(Å))
R_{free}	130704	4693 (1.64-1.60)
Clashscore	141614	5002 (1.64-1.60)
Ramachandran outliers	138981	4888 (1.64-1.60)
Sidechain outliers	138945	4887 (1.64-1.60)
RSRZ outliers	127900	4609 (1.64-1.60)

The table below summarises the geometric issues observed across the polymeric chains and their fit to the electron density. The red, orange, yellow and green segments on the lower bar indicate the fraction of residues that contain outliers for ≥ 3 , 2, 1 and 0 types of geometric quality criteria respectively. A grey segment represents the fraction of residues that are not modelled. The numeric value for each fraction is indicated below the corresponding segment, with a dot representing fractions $\leq 5\%$. The upper red bar (where present) indicates the fraction of residues that have poor fit to the electron density. The numeric value is given above the bar.

Mol	Chain	Length	Quality of chain
1	A	707	<div> <div>3%</div> <div> <div></div> <div>91%</div> <div>7% ..</div> </div> </div>
2	B	2	<div> <div>100%</div> </div>
2	C	2	<div> <div>50%</div> <div>50%</div> </div>
3	D	3	<div> <div>100%</div> </div>
4	E	5	<div> <div>100%</div> </div>

2 Entry composition [i](#)

There are 10 unique types of molecules in this entry. The entry contains 6579 atoms, of which 0 are hydrogens and 0 are deuteriums.

In the tables below, the ZeroOcc column contains the number of atoms modelled with zero occupancy, the AltConf column contains the number of residues with at least one atom in alternate conformation and the Trace column contains the number of residues modelled with at most 2 atoms.

- Molecule 1 is a protein called Glutamate carboxypeptidase 2.

Mol	Chain	Residues	Atoms					ZeroOcc	AltConf	Trace
1	A	693	Total	C	N	O	S	0	46	0
			5788	3711	974	1081	22			

There is a discrepancy between the modelled and reference sequences:

Chain	Residue	Modelled	Actual	Comment	Reference
A	424	MET	GLU	engineered mutation	UNP Q04609

- Molecule 2 is an oligosaccharide called 2-acetamido-2-deoxy-beta-D-glucopyranose-(1-4)-2-acetamido-2-deoxy-beta-D-glucopyranose.



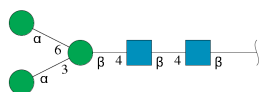
Mol	Chain	Residues	Atoms				ZeroOcc	AltConf	Trace
2	B	2	Total	C	N	O	0	0	0
			28	16	2	10			
2	C	2	Total	C	N	O	0	0	0
			28	16	2	10			

- Molecule 3 is an oligosaccharide called beta-D-mannopyranose-(1-4)-2-acetamido-2-deoxy-beta-D-glucopyranose-(1-4)-2-acetamido-2-deoxy-beta-D-glucopyranose.



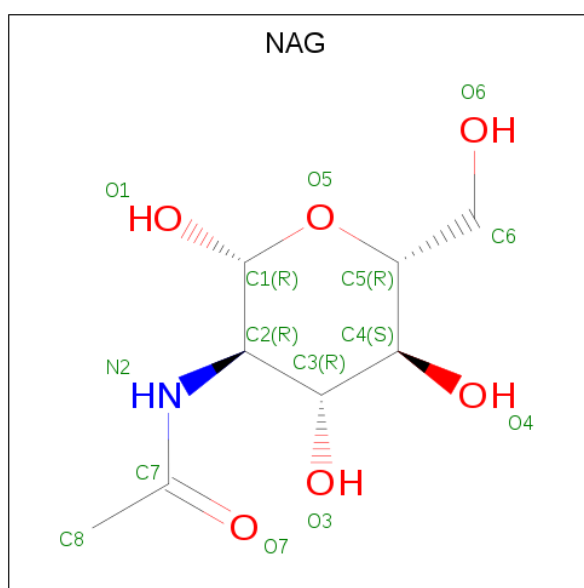
Mol	Chain	Residues	Atoms				ZeroOcc	AltConf	Trace
3	D	3	Total	C	N	O	0	0	0
			39	22	2	15			

- Molecule 4 is an oligosaccharide called alpha-D-mannopyranose-(1-3)-[alpha-D-mannopyranose-(1-6)]beta-D-mannopyranose-(1-4)-2-acetamido-2-deoxy-beta-D-glucopyranose-(1-4)-2-acetamido-2-deoxy-beta-D-glucopyranose.



Mol	Chain	Residues	Atoms				ZeroOcc	AltConf	Trace
4	E	5	Total	C	N	O	0	0	0
			61	34	2	25			

- Molecule 5 is 2-acetamido-2-deoxy-beta-D-glucopyranose (three-letter code: NAG) (formula: $C_8H_{15}NO_6$).



Mol	Chain	Residues	Atoms				ZeroOcc	AltConf
5	A	1	Total	C	N	O	0	0
			14	8	1	5		
5	A	1	Total	C	N	O	0	0
			14	8	1	5		
5	A	1	Total	C	N	O	0	0
			14	8	1	5		

- Molecule 6 is ZINC ION (three-letter code: ZN) (formula: Zn).

Mol	Chain	Residues	Atoms		ZeroOcc	AltConf
6	A	2	Total	Zn	0	0
			2	2		

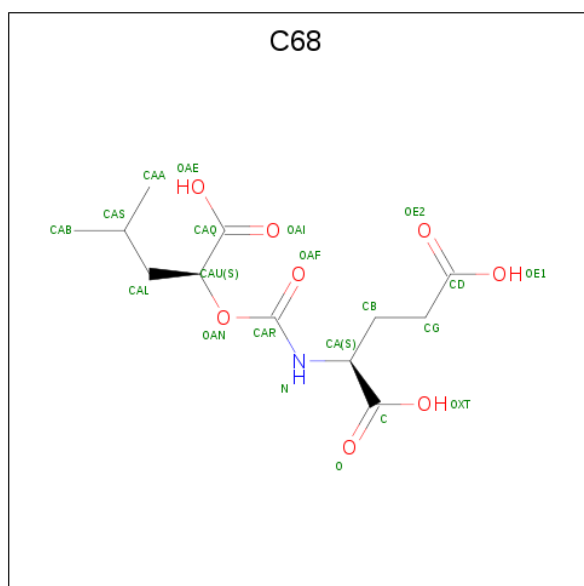
- Molecule 7 is CALCIUM ION (three-letter code: CA) (formula: Ca).

Mol	Chain	Residues	Atoms		ZeroOcc	AltConf
7	A	1	Total	Ca	0	0
			1	1		

- Molecule 8 is CHLORIDE ION (three-letter code: CL) (formula: Cl).

Mol	Chain	Residues	Atoms		ZeroOcc	AltConf
8	A	1	Total	Cl	0	0
			1	1		

- Molecule 9 is (2 {S})-2-[[[(2 {S})-4-methyl-1-oxidanyl-1-oxidanylidene-pentan-2-yl]oxycarbonylamino]pentanedioic acid (three-letter code: C68) (formula: C₁₂H₁₉NO₈) (labeled as "Ligand of Interest" by author).



Mol	Chain	Residues	Atoms				ZeroOcc	AltConf
9	A	1	Total	C	N	O	0	0
			21	12	1	8		

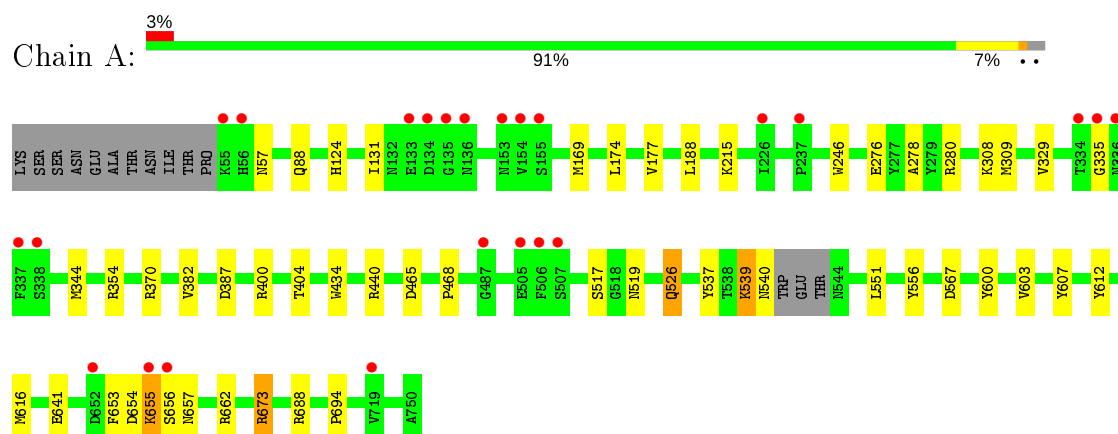
- Molecule 10 is water.

Mol	Chain	Residues	Atoms		ZeroOcc	AltConf
10	A	567	Total	O	0	4
			568	568		

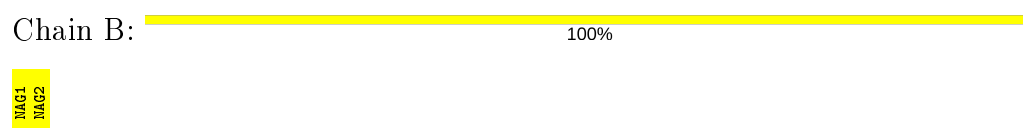
3 Residue-property plots [i](#)

These plots are drawn for all protein, RNA, DNA and oligosaccharide chains in the entry. The first graphic for a chain summarises the proportions of the various outlier classes displayed in the second graphic. The second graphic shows the sequence view annotated by issues in geometry and electron density. Residues are color-coded according to the number of geometric quality criteria for which they contain at least one outlier: green = 0, yellow = 1, orange = 2 and red = 3 or more. A red dot above a residue indicates a poor fit to the electron density ($RSRZ > 2$). Stretches of 2 or more consecutive residues without any outlier are shown as a green connector. Residues present in the sample, but not in the model, are shown in grey.

- Molecule 1: Glutamate carboxypeptidase 2



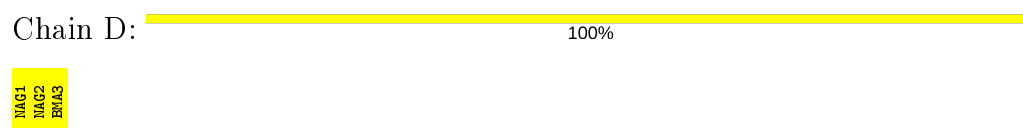
- Molecule 2: 2-acetamido-2-deoxy-beta-D-glucopyranose-(1-4)-2-acetamido-2-deoxy-beta-D-glucopyranose



- Molecule 2: 2-acetamido-2-deoxy-beta-D-glucopyranose-(1-4)-2-acetamido-2-deoxy-beta-D-glucopyranose



- Molecule 3: beta-D-mannopyranose-(1-4)-2-acetamido-2-deoxy-beta-D-glucopyranose-(1-4)-2-acetamido-2-deoxy-beta-D-glucopyranose



- Molecule 4: α -D-mannopyranose-(1-3)-[α -D-mannopyranose-(1-6)] β -D-mannopyranose-(1-4)-2-acetamido-2-deoxy- β -D-glucopyranose-(1-4)-2-acetamido-2-deoxy- β -D-glucopyranose

Chain E:

100%

MAG1
MAG2
EUA3
MAN4
MAN5

4 Data and refinement statistics

Property	Value	Source
Space group	I 2 2 2	Depositor
Cell constants a, b, c, α , β , γ	101.74Å 130.45Å 159.80Å 90.00° 90.00° 90.00°	Depositor
Resolution (Å)	30.00 – 1.61 29.57 – 1.61	Depositor EDS
% Data completeness (in resolution range)	97.7 (30.00-1.61) 97.6 (29.57-1.61)	Depositor EDS
R_{merge}	0.09	Depositor
R_{sym}	(Not available)	Depositor
$\langle I/\sigma(I) \rangle$ ¹	1.14 (at 1.62Å)	Xtriage
Refinement program	REFMAC 5.8.0135	Depositor
R, R_{free}	0.163 , 0.181 0.164 , 0.182	Depositor DCC
R_{free} test set	4058 reflections (3.06%)	wwPDB-VP
Wilson B-factor (Å ²)	19.5	Xtriage
Anisotropy	0.621	Xtriage
Bulk solvent k_{sol} (e/Å ³), B_{sol} (Å ²)	0.36 , 47.5	EDS
L-test for twinning ²	$\langle L \rangle = 0.47$, $\langle L^2 \rangle = 0.30$	Xtriage
Estimated twinning fraction	No twinning to report.	Xtriage
F_o, F_c correlation	0.97	EDS
Total number of atoms	6579	wwPDB-VP
Average B, all atoms (Å ²)	29.0	wwPDB-VP

Xtriage's analysis on translational NCS is as follows: *The largest off-origin peak in the Patterson function is 4.17% of the height of the origin peak. No significant pseudotranslation is detected.*

¹Intensities estimated from amplitudes.

²Theoretical values of $\langle |L| \rangle$, $\langle L^2 \rangle$ for acentric reflections are 0.5, 0.333 respectively for untwinned datasets, and 0.375, 0.2 for perfectly twinned datasets.

5 Model quality

5.1 Standard geometry

Bond lengths and bond angles in the following residue types are not validated in this section: ZN, BMA, NAG, C68, CL, CA, MAN

The Z score for a bond length (or angle) is the number of standard deviations the observed value is removed from the expected value. A bond length (or angle) with $|Z| > 5$ is considered an outlier worth inspection. RMSZ is the root-mean-square of all Z scores of the bond lengths (or angles).

Mol	Chain	Bond lengths		Bond angles	
		RMSZ	$\# Z > 5$	RMSZ	$\# Z > 5$
1	A	0.78	1/6036 (0.0%)	0.85	12/8170 (0.1%)

All (1) bond length outliers are listed below:

Mol	Chain	Res	Type	Atoms	Z	Observed(Å)	Ideal(Å)
1	A	434	TRP	CE3-CZ3	5.35	1.47	1.38

All (12) bond angle outliers are listed below:

Mol	Chain	Res	Type	Atoms	Z	Observed(°)	Ideal(°)
1	A	370	ARG	NE-CZ-NH1	7.05	123.82	120.30
1	A	673	ARG	NE-CZ-NH1	6.92	123.76	120.30
1	A	673	ARG	NE-CZ-NH2	-6.87	116.86	120.30
1	A	465	ASP	CB-CG-OD1	6.60	124.24	118.30
1	A	440	ARG	NE-CZ-NH2	-6.40	117.10	120.30
1	A	662[A]	ARG	NE-CZ-NH2	-5.97	117.31	120.30
1	A	662[B]	ARG	NE-CZ-NH2	-5.97	117.31	120.30
1	A	387	ASP	CB-CG-OD1	-5.55	113.31	118.30
1	A	370	ARG	NE-CZ-NH2	-5.42	117.59	120.30
1	A	567	ASP	CB-CG-OD1	5.33	123.10	118.30
1	A	662[A]	ARG	NE-CZ-NH1	5.02	122.81	120.30
1	A	662[B]	ARG	NE-CZ-NH1	5.02	122.81	120.30

There are no chirality outliers.

There are no planarity outliers.

5.2 Too-close contacts ⓘ

In the following table, the Non-H and H(model) columns list the number of non-hydrogen atoms and hydrogen atoms in the chain respectively. The H(added) column lists the number of hydrogen atoms added and optimized by MolProbity. The Clashes column lists the number of clashes within the asymmetric unit, whereas Symm-Clashes lists symmetry related clashes.

Mol	Chain	Non-H	H(model)	H(added)	Clashes	Symm-Clashes
1	A	5788	0	5650	31	0
2	B	28	0	25	0	0
2	C	28	0	25	0	0
3	D	39	0	34	0	0
4	E	61	0	52	0	0
5	A	42	0	39	1	0
6	A	2	0	0	0	0
7	A	1	0	0	0	0
8	A	1	0	0	0	0
9	A	21	0	0	0	0
10	A	568	0	0	5	1
All	All	6579	0	5825	31	1

The all-atom clashscore is defined as the number of clashes found per 1000 atoms (including hydrogen atoms). The all-atom clashscore for this structure is 3.

All (31) close contacts within the same asymmetric unit are listed below, sorted by their clash magnitude.

Atom-1	Atom-2	Interatomic distance (Å)	Clash overlap (Å)
1:A:655[B]:LYS:O	1:A:657[B]:ASN:N	2.09	0.86
1:A:654[B]:ASP:O	1:A:655[B]:LYS:O	1.96	0.84
1:A:603[B]:VAL:HG13	1:A:607:TYR:CZ	2.25	0.72
1:A:641:GLU:HG3	10:A:1317:HOH:O	1.99	0.63
1:A:655[B]:LYS:C	1:A:657[B]:ASN:H	2.01	0.62
1:A:603[B]:VAL:HG13	1:A:607:TYR:CE2	2.34	0.61
1:A:603[B]:VAL:CG1	1:A:607:TYR:CE2	2.84	0.60
1:A:468:PRO:HG2	1:A:603[A]:VAL:HG21	1.85	0.56
1:A:177:VAL:HG12	1:A:188:LEU:HD11	1.88	0.54
1:A:612:TYR:CZ	1:A:616:MET:HG3	2.43	0.54
1:A:308:LYS:HB2	10:A:912:HOH:O	2.08	0.53
1:A:400:ARG:O	1:A:404[B]:THR:HG23	2.08	0.53
1:A:276[A]:GLU:O	1:A:276[A]:GLU:HG3	2.10	0.52
1:A:654[B]:ASP:CG	1:A:655[B]:LYS:H	2.14	0.51
1:A:468:PRO:CG	1:A:603[A]:VAL:HG21	2.42	0.49
1:A:88[A]:GLN:NE2	10:A:901:HOH:O	2.47	0.47

Continued on next page...

Continued from previous page...

Atom-1	Atom-2	Interatomic distance (Å)	Clash overlap (Å)
1:A:653[B]:PHE:O	1:A:654[B]:ASP:HB2	2.15	0.47
1:A:655[B]:LYS:C	1:A:657[B]:ASN:N	2.66	0.47
1:A:276[B]:GLU:OE2	1:A:354:ARG:NH2	2.40	0.46
1:A:278:ALA:HB3	1:A:280[B]:ARG:CZ	2.45	0.46
1:A:215:LYS:NZ	10:A:910:HOH:O	2.49	0.45
1:A:539:LYS:HG3	1:A:540:ASN:N	2.32	0.44
1:A:169:MET:HA	1:A:344:MET:O	2.18	0.44
1:A:603[B]:VAL:CG1	1:A:607:TYR:CZ	2.98	0.44
1:A:688[B]:ARG:NH1	10:A:905:HOH:O	2.38	0.43
1:A:517:SER:HB2	1:A:694:PRO:HG3	2.01	0.43
1:A:188:LEU:HD21	1:A:329:VAL:HG11	2.01	0.42
1:A:526[A]:GLN:HB3	1:A:526[A]:GLN:HE21	1.54	0.42
1:A:246:TRP:CD1	5:A:807:NAG:H83	2.56	0.40
1:A:174[B]:LEU:HB2	1:A:309[B]:MET:SD	2.62	0.40
1:A:551:LEU:HD22	1:A:556:TYR:HB2	2.03	0.40

All (1) symmetry-related close contacts are listed below. The label for Atom-2 includes the symmetry operator and encoded unit-cell translations to be applied.

Atom-1	Atom-2	Interatomic distance (Å)	Clash overlap (Å)
10:A:1295:HOH:O	10:A:1303:HOH:O[2_565]	2.17	0.03

5.3 Torsion angles [i](#)

5.3.1 Protein backbone [i](#)

In the following table, the Percentiles column shows the percent Ramachandran outliers of the chain as a percentile score with respect to all X-ray entries followed by that with respect to entries of similar resolution.

The Analysed column shows the number of residues for which the backbone conformation was analysed, and the total number of residues.

Mol	Chain	Analysed	Favoured	Allowed	Outliers	Percentiles
1	A	735/707 (104%)	715 (97%)	14 (2%)	6 (1%)	19 5

All (6) Ramachandran outliers are listed below:

Mol	Chain	Res	Type
1	A	655[A]	LYS

Continued on next page...

Continued from previous page...

Mol	Chain	Res	Type
1	A	655[B]	LYS
1	A	656[A]	SER
1	A	656[B]	SER
1	A	382	VAL
1	A	335	GLY

5.3.2 Protein sidechains ⓘ

In the following table, the Percentiles column shows the percent sidechain outliers of the chain as a percentile score with respect to all X-ray entries followed by that with respect to entries of similar resolution.

The Analysed column shows the number of residues for which the sidechain conformation was analysed, and the total number of residues.

Mol	Chain	Analysed	Rotameric	Outliers	Percentiles
1	A	636/603 (106%)	626 (98%)	10 (2%)	62 40

All (10) residues with a non-rotameric sidechain are listed below:

Mol	Chain	Res	Type
1	A	57	ASN
1	A	124	HIS
1	A	131	ILE
1	A	519	ASN
1	A	526[A]	GLN
1	A	526[B]	GLN
1	A	537	TYR
1	A	539	LYS
1	A	600	TYR
1	A	673	ARG

Some sidechains can be flipped to improve hydrogen bonding and reduce clashes. All (5) such sidechains are listed below:

Mol	Chain	Res	Type
1	A	57	ASN
1	A	216	ASN
1	A	303	GLN
1	A	345	HIS
1	A	347	HIS

5.3.3 RNA ⓘ

There are no RNA molecules in this entry.

5.4 Non-standard residues in protein, DNA, RNA chains ⓘ

There are no non-standard protein/DNA/RNA residues in this entry.

5.5 Carbohydrates ⓘ

12 monosaccharides are modelled in this entry.

In the following table, the Counts columns list the number of bonds (or angles) for which Mogul statistics could be retrieved, the number of bonds (or angles) that are observed in the model and the number of bonds (or angles) that are defined in the Chemical Component Dictionary. The Link column lists molecule types, if any, to which the group is linked. The Z score for a bond length (or angle) is the number of standard deviations the observed value is removed from the expected value. A bond length (or angle) with $|Z| > 2$ is considered an outlier worth inspection. RMSZ is the root-mean-square of all Z scores of the bond lengths (or angles).

Mol	Type	Chain	Res	Link	Bond lengths			Bond angles		
					Counts	RMSZ	$\# Z > 2$	Counts	RMSZ	$\# Z > 2$
2	NAG	B	1	1,2	14,14,15	0.41	0	17,19,21	1.13	2 (11%)
2	NAG	B	2	2	14,14,15	0.55	0	17,19,21	1.04	1 (5%)
2	NAG	C	1	1,2	14,14,15	0.57	0	17,19,21	0.97	1 (5%)
2	NAG	C	2	2	14,14,15	0.58	0	17,19,21	0.97	0
3	NAG	D	1	1,3	14,14,15	0.50	0	17,19,21	0.99	1 (5%)
3	NAG	D	2	3	14,14,15	0.37	0	17,19,21	1.13	2 (11%)
3	BMA	D	3	3	11,11,12	0.65	0	15,15,17	1.13	2 (13%)
4	NAG	E	1	1,4	14,14,15	0.55	0	17,19,21	1.08	1 (5%)
4	NAG	E	2	4	14,14,15	0.41	0	17,19,21	1.74	2 (11%)
4	BMA	E	3	4	11,11,12	0.34	0	15,15,17	0.87	1 (6%)
4	MAN	E	4	4	11,11,12	0.55	0	15,15,17	1.06	1 (6%)
4	MAN	E	5	4	11,11,12	0.69	0	15,15,17	0.95	1 (6%)

In the following table, the Chirals column lists the number of chiral outliers, the number of chiral centers analysed, the number of these observed in the model and the number defined in the Chemical Component Dictionary. Similar counts are reported in the Torsion and Rings columns. '-' means no outliers of that kind were identified.

Mol	Type	Chain	Res	Link	Chirals	Torsions	Rings
2	NAG	B	1	1,2	-	0/6/23/26	0/1/1/1
2	NAG	B	2	2	-	1/6/23/26	0/1/1/1
2	NAG	C	1	1,2	-	0/6/23/26	0/1/1/1
2	NAG	C	2	2	-	2/6/23/26	0/1/1/1
3	NAG	D	1	1,3	-	2/6/23/26	0/1/1/1
3	NAG	D	2	3	-	2/6/23/26	0/1/1/1
3	BMA	D	3	3	-	2/2/19/22	0/1/1/1
4	NAG	E	1	1,4	-	0/6/23/26	0/1/1/1
4	NAG	E	2	4	-	4/6/23/26	0/1/1/1
4	BMA	E	3	4	-	0/2/19/22	0/1/1/1
4	MAN	E	4	4	-	0/2/19/22	0/1/1/1
4	MAN	E	5	4	-	0/2/19/22	0/1/1/1

There are no bond length outliers.

All (15) bond angle outliers are listed below:

Mol	Chain	Res	Type	Atoms	Z	Observed(°)	Ideal(°)
4	E	2	NAG	C1-O5-C5	5.57	119.74	112.19
2	B	2	NAG	C1-O5-C5	2.89	116.10	112.19
3	D	3	BMA	C1-O5-C5	2.86	116.07	112.19
3	D	2	NAG	C8-C7-N2	2.85	120.92	116.10
4	E	4	MAN	C1-O5-C5	2.75	115.92	112.19
3	D	3	BMA	O5-C5-C6	2.63	111.32	107.20
4	E	1	NAG	O5-C1-C2	-2.62	107.15	111.29
4	E	5	MAN	C1-O5-C5	2.61	115.72	112.19
4	E	2	NAG	C8-C7-N2	2.49	120.32	116.10
2	B	1	NAG	O5-C1-C2	-2.42	107.46	111.29
2	B	1	NAG	C4-C3-C2	2.37	114.48	111.02
2	C	1	NAG	C1-O5-C5	2.27	115.27	112.19
3	D	2	NAG	C2-N2-C7	2.19	126.02	122.90
4	E	3	BMA	O3-C3-C2	-2.15	105.88	109.99
3	D	1	NAG	O5-C1-C2	-2.05	108.06	111.29

There are no chirality outliers.

All (13) torsion outliers are listed below:

Mol	Chain	Res	Type	Atoms
3	D	2	NAG	C8-C7-N2-C2
3	D	2	NAG	O7-C7-N2-C2
4	E	2	NAG	C8-C7-N2-C2
4	E	2	NAG	O7-C7-N2-C2

Continued on next page...

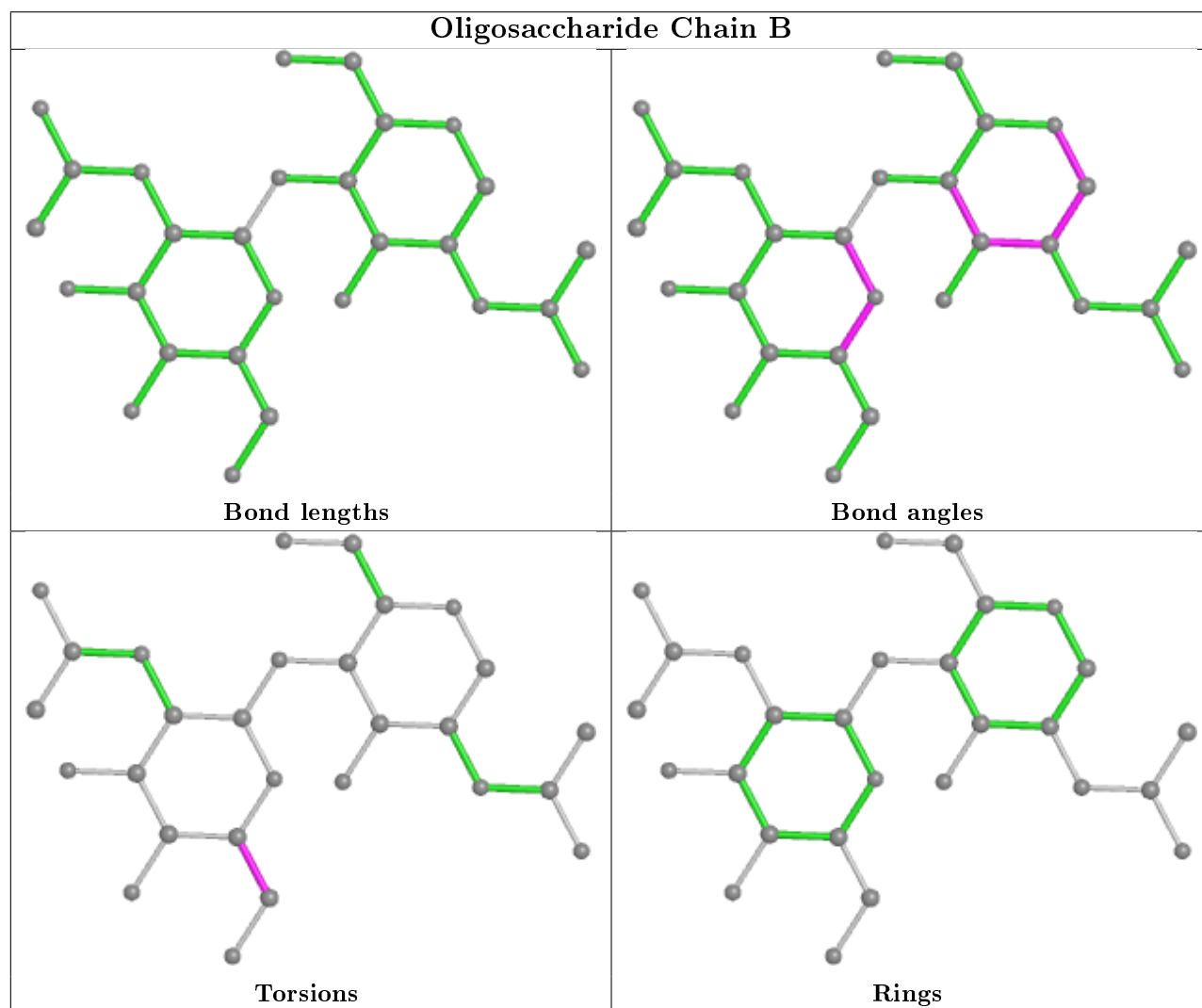
Continued from previous page...

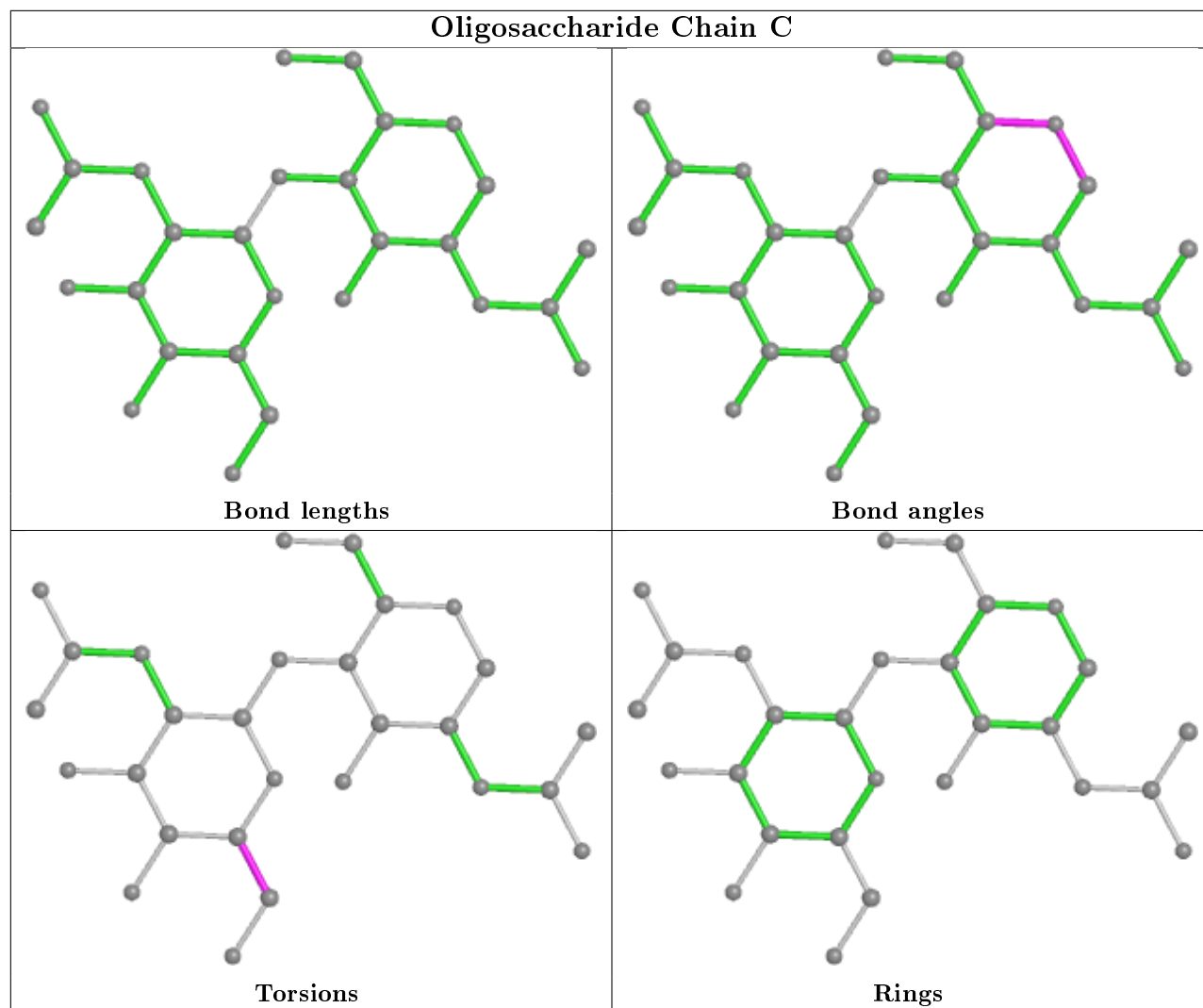
Mol	Chain	Res	Type	Atoms
3	D	1	NAG	C8-C7-N2-C2
3	D	1	NAG	O7-C7-N2-C2
3	D	3	BMA	C4-C5-C6-O6
4	E	2	NAG	C4-C5-C6-O6
3	D	3	BMA	O5-C5-C6-O6
4	E	2	NAG	O5-C5-C6-O6
2	C	2	NAG	C4-C5-C6-O6
2	C	2	NAG	O5-C5-C6-O6
2	B	2	NAG	C4-C5-C6-O6

There are no ring outliers.

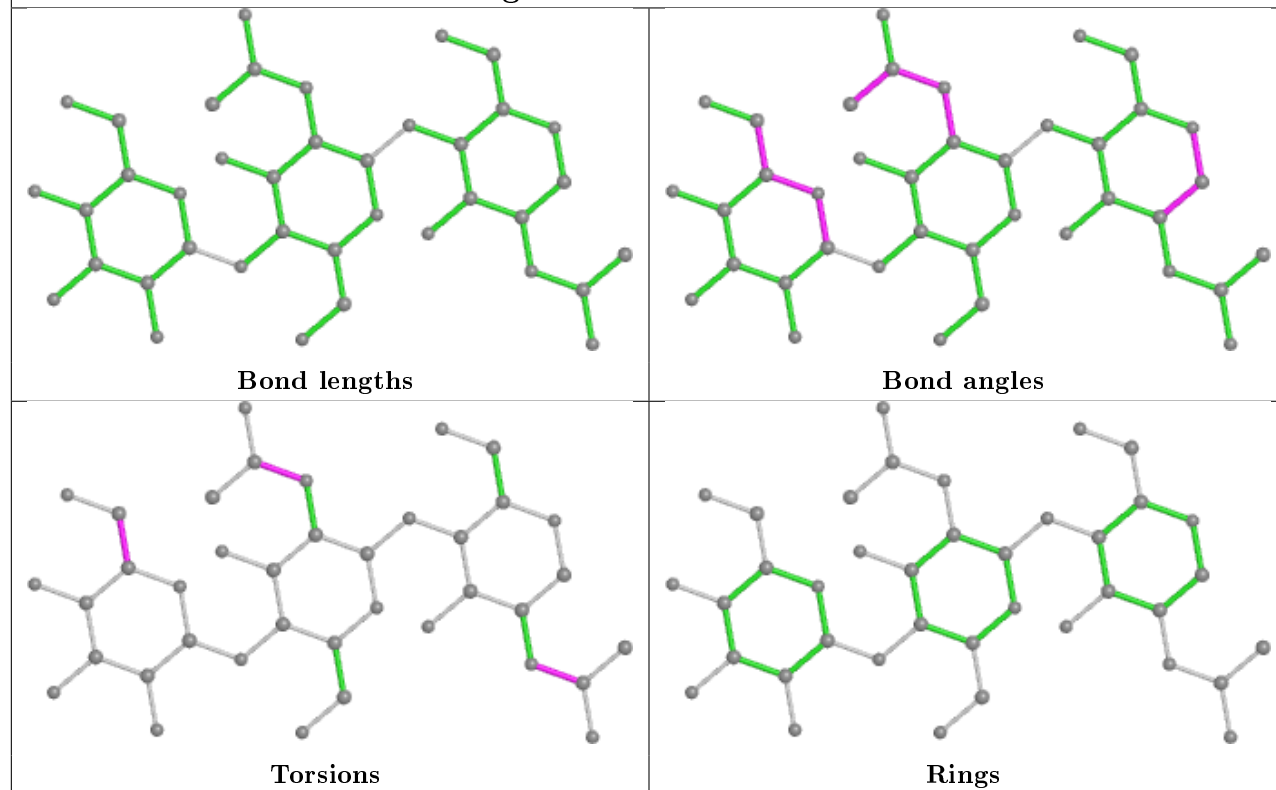
No monomer is involved in short contacts.

The following is a two-dimensional graphical depiction of Mogul quality analysis of bond lengths, bond angles, torsion angles, and ring geometry for oligosaccharide.

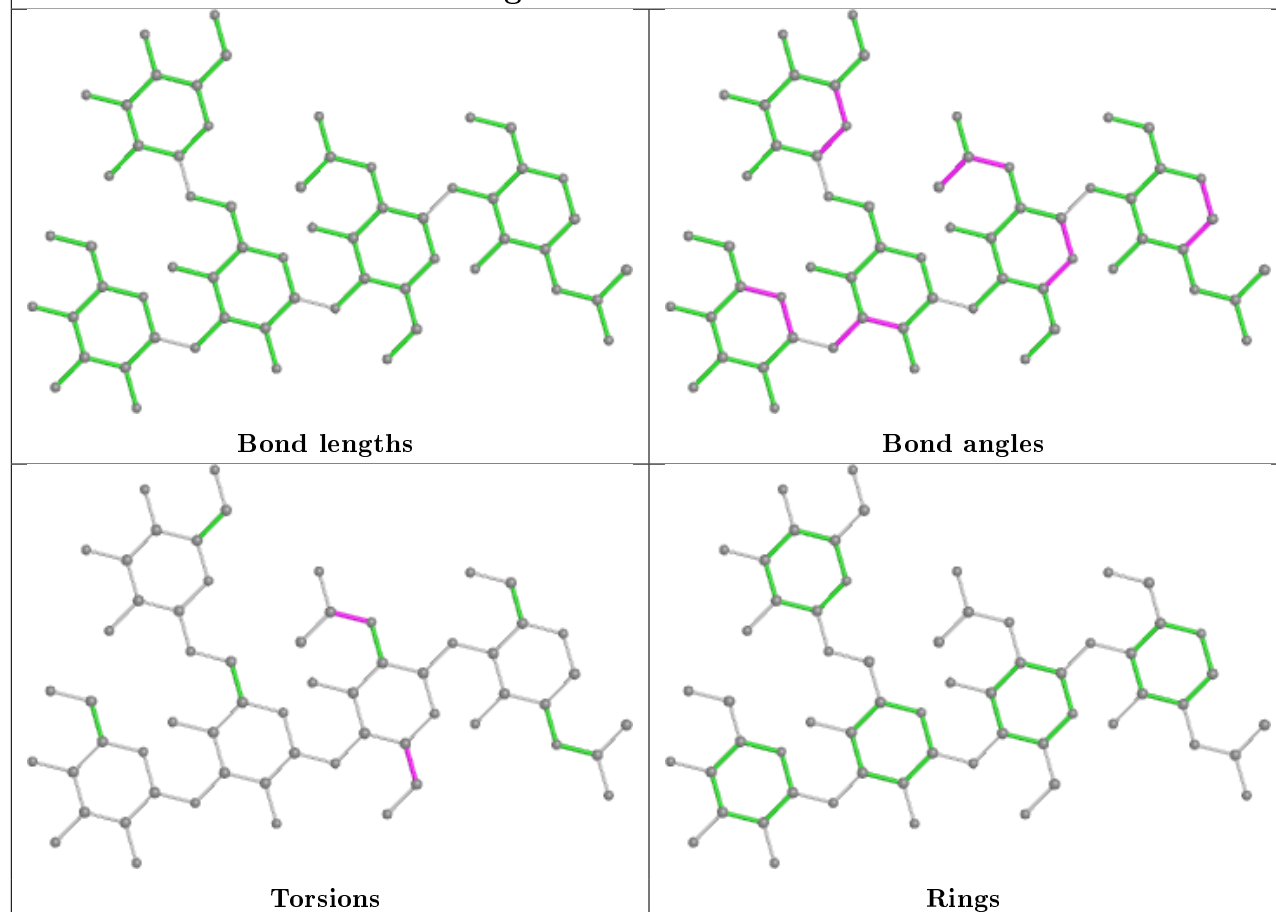




Oligosaccharide Chain D



Oligosaccharide Chain E



5.6 Ligand geometry

Of 8 ligands modelled in this entry, 4 are monoatomic - leaving 4 for Mogul analysis.

In the following table, the Counts columns list the number of bonds (or angles) for which Mogul statistics could be retrieved, the number of bonds (or angles) that are observed in the model and the number of bonds (or angles) that are defined in the Chemical Component Dictionary. The Link column lists molecule types, if any, to which the group is linked. The Z score for a bond length (or angle) is the number of standard deviations the observed value is removed from the expected value. A bond length (or angle) with $|Z| > 2$ is considered an outlier worth inspection. RMSZ is the root-mean-square of all Z scores of the bond lengths (or angles).

Mol	Type	Chain	Res	Link	Bond lengths			Bond angles		
					Counts	RMSZ	# $ Z > 2$	Counts	RMSZ	# $ Z > 2$
9	C68	A	820	-	11,20,20	1.03	1 (9%)	12,26,26	1.81	2 (16%)
5	NAG	A	803	1	14,14,15	0.60	0	17,19,21	1.40	3 (17%)
5	NAG	A	806	1	14,14,15	0.57	0	17,19,21	2.11	5 (29%)
5	NAG	A	807	1	14,14,15	0.69	0	17,19,21	1.29	2 (11%)

In the following table, the Chirals column lists the number of chiral outliers, the number of chiral centers analysed, the number of these observed in the model and the number defined in the Chemical Component Dictionary. Similar counts are reported in the Torsion and Rings columns. '-' means no outliers of that kind were identified.

Mol	Type	Chain	Res	Link	Chirals	Torsions	Rings
9	C68	A	820	-	-	1/15/25/25	-
5	NAG	A	803	1	-	2/6/23/26	0/1/1/1
5	NAG	A	806	1	-	3/6/23/26	0/1/1/1
5	NAG	A	807	1	-	0/6/23/26	0/1/1/1

All (1) bond length outliers are listed below:

Mol	Chain	Res	Type	Atoms	Z	Observed(Å)	Ideal(Å)
9	A	820	C68	CB-CA	2.25	1.56	1.53

All (12) bond angle outliers are listed below:

Mol	Chain	Res	Type	Atoms	Z	Observed(°)	Ideal(°)
5	A	806	NAG	C1-O5-C5	6.60	121.13	112.19
9	A	820	C68	OAN-CAR-N	4.86	116.62	110.32
5	A	807	NAG	C1-O5-C5	3.29	116.65	112.19
9	A	820	C68	OAF-CAR-N	-2.93	120.05	124.85
5	A	803	NAG	C1-C2-N2	-2.88	105.57	110.49

Continued on next page...

Continued from previous page...

Mol	Chain	Res	Type	Atoms	Z	Observed(°)	Ideal(°)
5	A	803	NAG	O5-C5-C6	2.83	111.65	107.20
5	A	806	NAG	C2-N2-C7	2.72	126.78	122.90
5	A	806	NAG	C8-C7-N2	2.58	120.46	116.10
5	A	807	NAG	O5-C1-C2	-2.40	107.50	111.29
5	A	806	NAG	C6-C5-C4	-2.25	107.74	113.00
5	A	803	NAG	C8-C7-N2	2.20	119.82	116.10
5	A	806	NAG	C3-C4-C5	2.09	113.96	110.24

There are no chirality outliers.

All (6) torsion outliers are listed below:

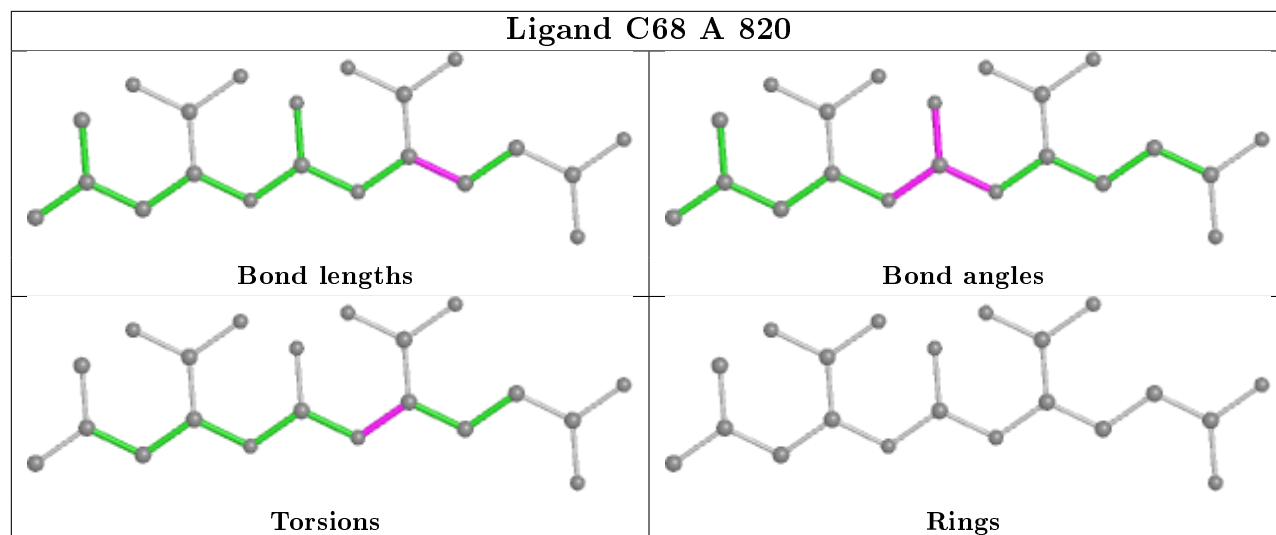
Mol	Chain	Res	Type	Atoms
5	A	806	NAG	C8-C7-N2-C2
5	A	806	NAG	O7-C7-N2-C2
5	A	803	NAG	C8-C7-N2-C2
5	A	803	NAG	O7-C7-N2-C2
9	A	820	C68	C-CA-N-CAR
5	A	806	NAG	C4-C5-C6-O6

There are no ring outliers.

1 monomer is involved in 1 short contact:

Mol	Chain	Res	Type	Clashes	Symm-Clashes
5	A	807	NAG	1	0

The following is a two-dimensional graphical depiction of Mogul quality analysis of bond lengths, bond angles, torsion angles, and ring geometry for all instances of the Ligand of Interest. In addition, ligands with molecular weight > 250 and outliers as shown on the validation Tables will also be included. For torsion angles, if less than 5% of the Mogul distribution of torsion angles is within 10 degrees of the torsion angle in question, then that torsion angle is considered an outlier. Any bond that is central to one or more torsion angles identified as an outlier by Mogul will be highlighted in the graph. For rings, the root-mean-square deviation (RMSD) between the ring in question and similar rings identified by Mogul is calculated over all ring torsion angles. If the average RMSD is greater than 60 degrees and the minimal RMSD between the ring in question and any Mogul-identified rings is also greater than 60 degrees, then that ring is considered an outlier. The outliers are highlighted in purple. The color gray indicates Mogul did not find sufficient equivalents in the CSD to analyse the geometry.



5.7 Other polymers [i](#)

There are no such residues in this entry.

5.8 Polymer linkage issues [i](#)

There are no chain breaks in this entry.

6 Fit of model and data ⓘ

6.1 Protein, DNA and RNA chains ⓘ

In the following table, the column labelled ‘#RSRZ> 2’ contains the number (and percentage) of RSRZ outliers, followed by percent RSRZ outliers for the chain as percentile scores relative to all X-ray entries and entries of similar resolution. The OWAB column contains the minimum, median, 95th percentile and maximum values of the occupancy-weighted average B-factor per residue. The column labelled ‘Q< 0.9’ lists the number of (and percentage) of residues with an average occupancy less than 0.9.

Mol	Chain	Analysed	<RSRZ>	#RSRZ>2	OWAB(Å ²)	Q<0.9
1	A	693/707 (98%)	-0.19	24 (3%) 44 40	16, 26, 44, 68	0

All (24) RSRZ outliers are listed below:

Mol	Chain	Res	Type	RSRZ
1	A	335	GLY	4.0
1	A	719	VAL	3.6
1	A	153	ASN	3.4
1	A	652	ASP	3.4
1	A	336	ASN	3.2
1	A	55	LYS	3.1
1	A	134	ASP	3.1
1	A	155[A]	SER	3.1
1	A	135	GLY	3.0
1	A	154	VAL	3.0
1	A	656[A]	SER	2.7
1	A	56	HIS	2.6
1	A	655[A]	LYS	2.6
1	A	334	THR	2.6
1	A	136	ASN	2.4
1	A	506	PHE	2.4
1	A	507	SER	2.4
1	A	133	GLU	2.3
1	A	226	ILE	2.3
1	A	237	PRO	2.3
1	A	338	SER	2.2
1	A	505[A]	GLU	2.2
1	A	337	PHE	2.1
1	A	487	GLY	2.1

6.2 Non-standard residues in protein, DNA, RNA chains ⓘ

There are no non-standard protein/DNA/RNA residues in this entry.

6.3 Carbohydrates ⓘ

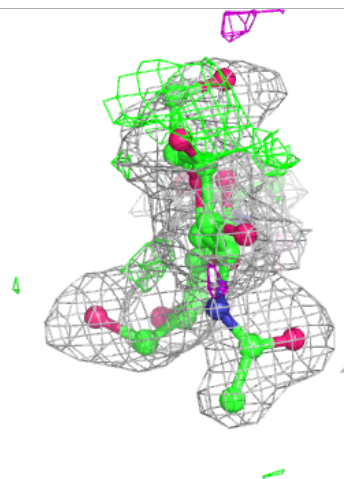
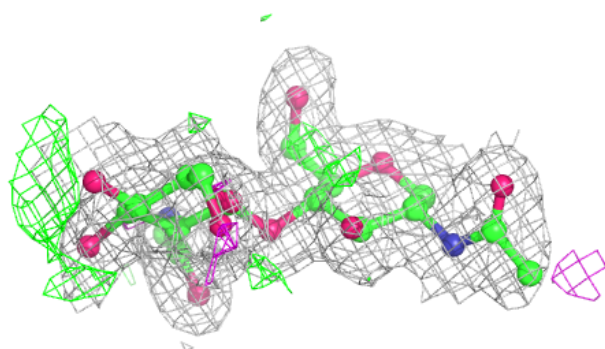
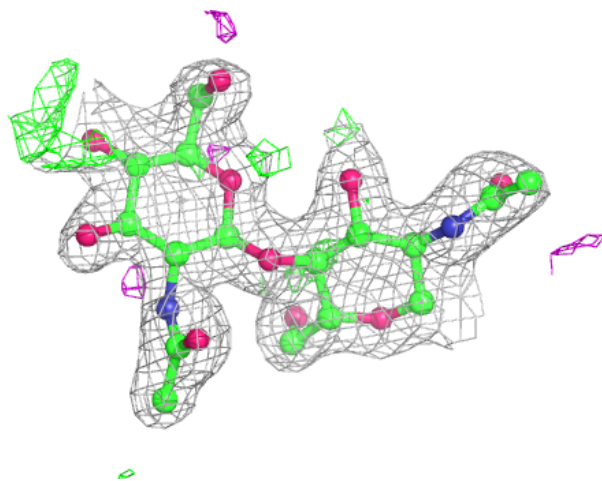
In the following table, the Atoms column lists the number of modelled atoms in the group and the number defined in the chemical component dictionary. The B-factors column lists the minimum, median, 95th percentile and maximum values of B factors of atoms in the group. The column labelled 'Q< 0.9' lists the number of atoms with occupancy less than 0.9.

Mol	Type	Chain	Res	Atoms	RSCC	RSR	B-factors(Å ²)	Q<0.9
3	BMA	D	3	11/12	0.78	0.27	49,52,58,62	0
2	NAG	B	2	14/15	0.79	0.24	40,50,56,57	0
2	NAG	C	2	14/15	0.81	0.29	47,56,63,64	0
4	MAN	E	5	11/12	0.84	0.28	52,54,56,59	0
3	NAG	D	2	14/15	0.89	0.15	34,40,46,48	0
2	NAG	C	1	14/15	0.89	0.13	37,40,44,49	0
4	NAG	E	2	14/15	0.90	0.19	37,40,47,54	0
4	NAG	E	1	14/15	0.90	0.08	23,29,36,44	0
4	MAN	E	4	11/12	0.90	0.17	41,42,45,46	0
4	BMA	E	3	11/12	0.91	0.14	40,42,46,46	0
3	NAG	D	1	14/15	0.92	0.09	26,30,35,40	0
2	NAG	B	1	14/15	0.94	0.10	31,37,45,48	0

The following is a graphical depiction of the model fit to experimental electron density for oligosaccharide. Each fit is shown from different orientation to approximate a three-dimensional view.

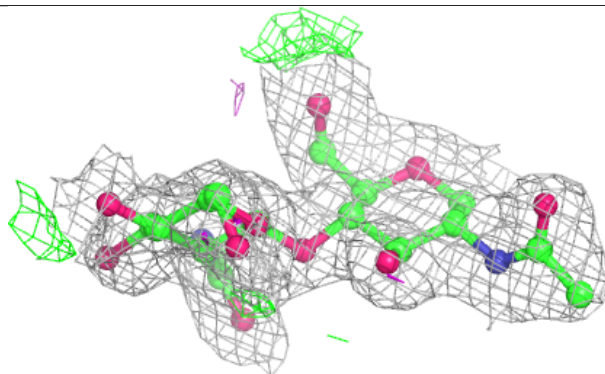
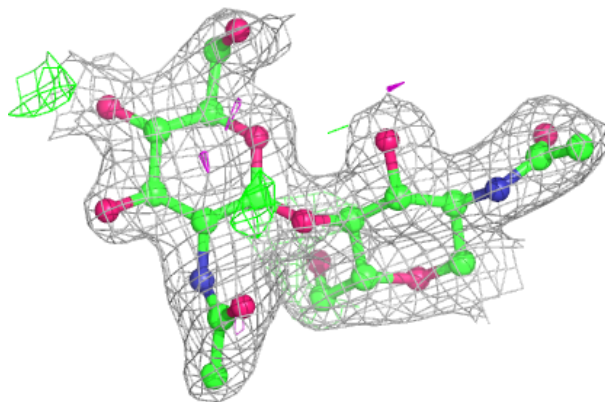
Electron density around Chain B:

$2mF_o-DF_c$ (at 0.7 rmsd) in gray
 mF_o-DF_c (at 3 rmsd) in purple (negative)
and green (positive)

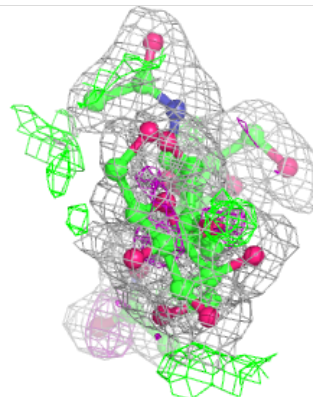
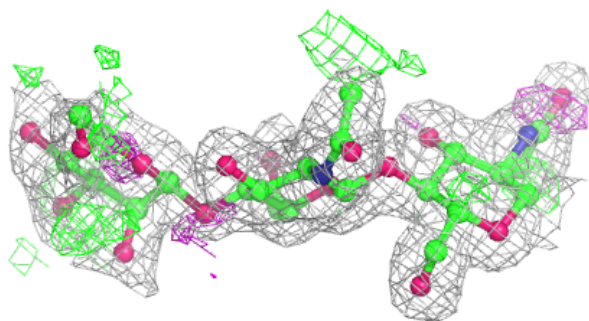
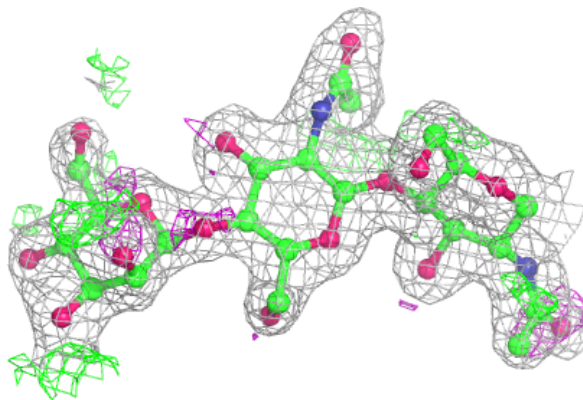


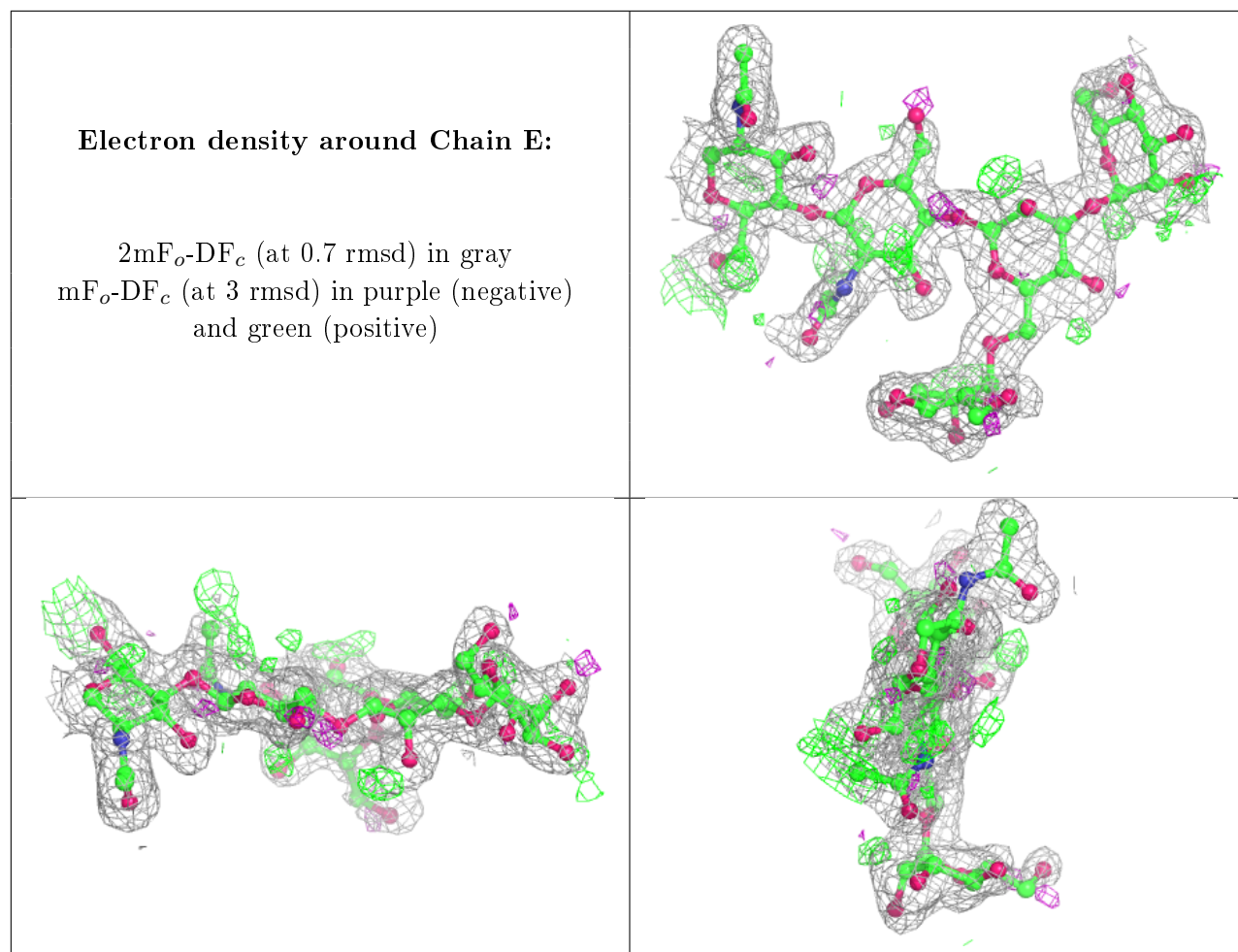
Electron density around Chain C:

$2mF_o-DF_c$ (at 0.7 rmsd) in gray
 mF_o-DF_c (at 3 rmsd) in purple (negative)
and green (positive)

**Electron density around Chain D:**

$2mF_o-DF_c$ (at 0.7 rmsd) in gray
 mF_o-DF_c (at 3 rmsd) in purple (negative)
and green (positive)





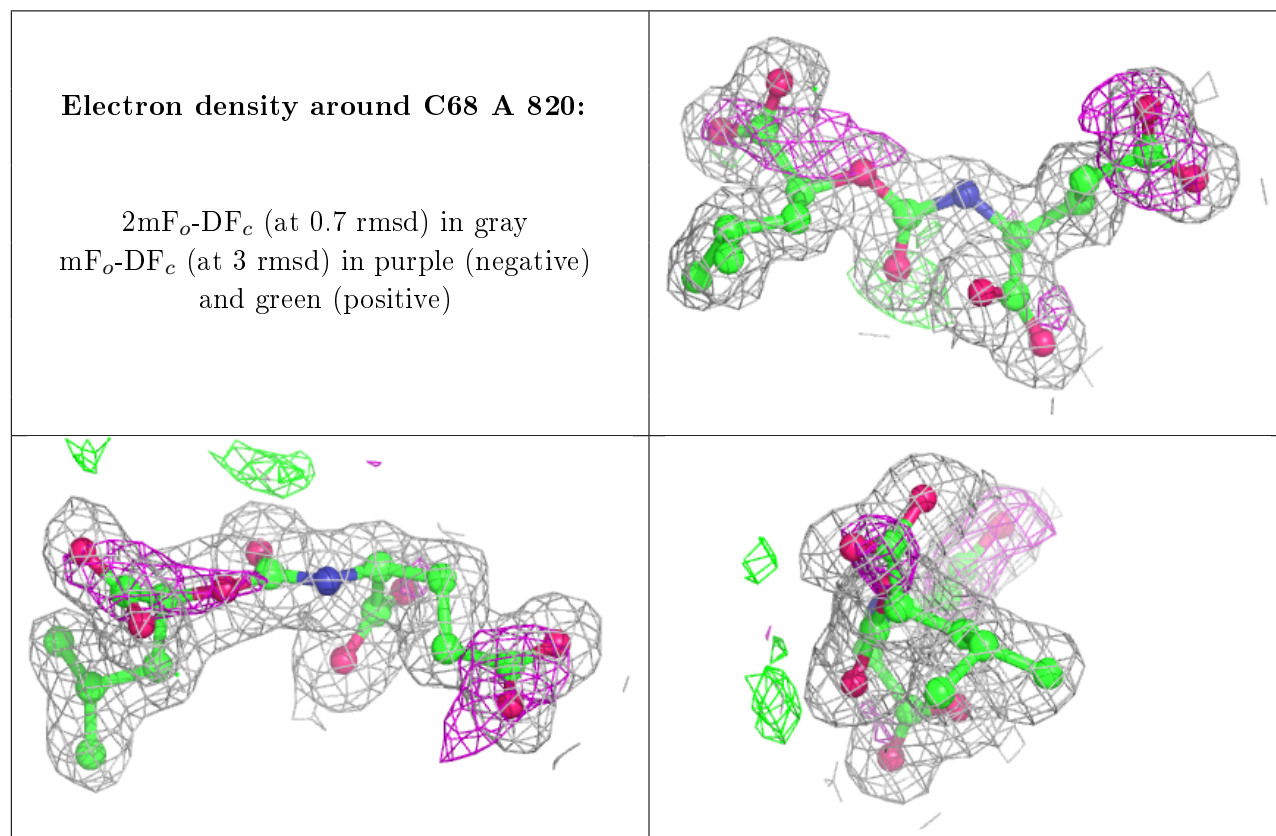
6.4 Ligands [i](#)

In the following table, the Atoms column lists the number of modelled atoms in the group and the number defined in the chemical component dictionary. The B-factors column lists the minimum, median, 95th percentile and maximum values of B factors of atoms in the group. The column labelled 'Q<0.9' lists the number of atoms with occupancy less than 0.9.

Mol	Type	Chain	Res	Atoms	RSCC	RSR	B-factors(Å ²)	Q<0.9
5	NAG	A	803	14/15	0.75	0.27	41,51,55,55	0
5	NAG	A	806	14/15	0.77	0.18	61,68,73,75	0
5	NAG	A	807	14/15	0.91	0.15	31,47,52,57	0
9	C68	A	820	21/21	0.95	0.08	22,25,29,30	0
8	CL	A	819	1/1	1.00	0.03	23,23,23,23	0
6	ZN	A	817	1/1	1.00	0.06	19,19,19,19	0
6	ZN	A	816	1/1	1.00	0.06	19,19,19,19	0
7	CA	A	818	1/1	1.00	0.06	17,17,17,17	0

The following is a graphical depiction of the model fit to experimental electron density of all instances of the Ligand of Interest. In addition, ligands with molecular weight > 250 and outliers

as shown on the geometry validation Tables will also be included. Each fit is shown from different orientation to approximate a three-dimensional view.



6.5 Other polymers [i](#)

There are no such residues in this entry.