



Full wwPDB X-ray Structure Validation Report ⓘ

May 23, 2020 – 04:03 am BST

PDB ID : 5F41
Title : DENGUE SEROTYPE 3 RNA-DEPENDENT RNA POLYMERASE BOUND
TO FD-83-KI26
Authors : Noble, C.G.
Deposited on : 2015-12-03
Resolution : 2.00 Å(reported)

This is a Full wwPDB X-ray Structure Validation Report for a publicly released PDB entry.

We welcome your comments at validation@mail.wwpdb.org

A user guide is available at

<https://www.wwpdb.org/validation/2017/XrayValidationReportHelp>

with specific help available everywhere you see the ⓘ symbol.

The following versions of software and data (see [references ⓘ](#)) were used in the production of this report:

MolProbity : 4.02b-467
Mogul : 1.8.5 (274361), CSD as541be (2020)
Xtriage (Phenix) : 1.13
EDS : 2.11
Percentile statistics : 20191225.v01 (using entries in the PDB archive December 25th 2019)
Refmac : 5.8.0158
CCP4 : 7.0.044 (Gargrove)
Ideal geometry (proteins) : Engh & Huber (2001)
Ideal geometry (DNA, RNA) : Parkinson et al. (1996)
Validation Pipeline (wwPDB-VP) : 2.11

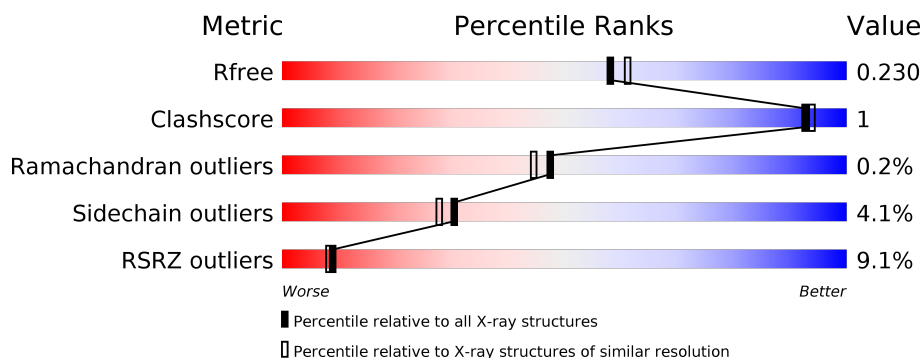
1 Overall quality at a glance

The following experimental techniques were used to determine the structure:

X-RAY DIFFRACTION

The reported resolution of this entry is 2.00 Å.

Percentile scores (ranging between 0-100) for global validation metrics of the entry are shown in the following graphic. The table shows the number of entries on which the scores are based.



Metric	Whole archive (#Entries)	Similar resolution (#Entries, resolution range(Å))
R_{free}	130704	8085 (2.00-2.00)
Clashscore	141614	9178 (2.00-2.00)
Ramachandran outliers	138981	9054 (2.00-2.00)
Sidechain outliers	138945	9053 (2.00-2.00)
RSRZ outliers	127900	7900 (2.00-2.00)

The table below summarises the geometric issues observed across the polymeric chains and their fit to the electron density. The red, orange, yellow and green segments on the lower bar indicate the fraction of residues that contain outliers for ≥ 3 , 2, 1 and 0 types of geometric quality criteria respectively. A grey segment represents the fraction of residues that are not modelled. The numeric value for each fraction is indicated below the corresponding segment, with a dot representing fractions $\leq 5\%$. The upper red bar (where present) indicates the fraction of residues that have poor fit to the electron density. The numeric value is given above the bar.

Mol	Chain	Length	Quality of chain
1	A	635	<div> <div>8%</div> <div>85%</div> <div>7%</div> <div>8%</div> </div>

2 Entry composition

There are 4 unique types of molecules in this entry. The entry contains 5182 atoms, of which 0 are hydrogens and 0 are deuteriums.

In the tables below, the ZeroOcc column contains the number of atoms modelled with zero occupancy, the AltConf column contains the number of residues with at least one atom in alternate conformation and the Trace column contains the number of residues modelled with at most 2 atoms.

- Molecule 1 is a protein called Genome polypeptide.

Mol	Chain	Residues	Atoms					ZeroOcc	AltConf	Trace
1	A	585	Total	C	N	O	S	0	3	0
			4780	3020	856	873	31			

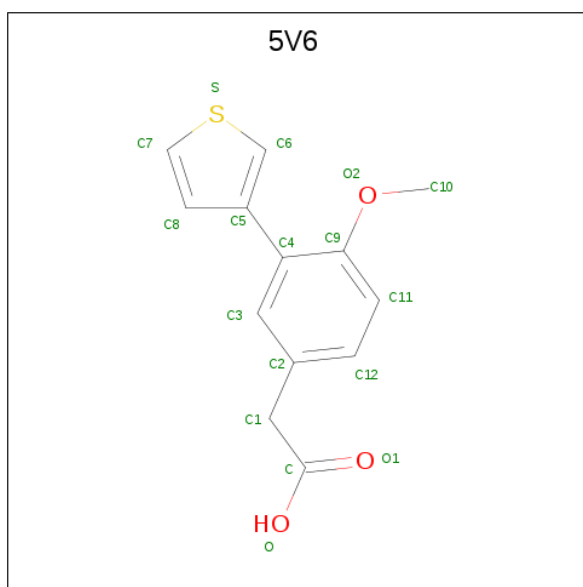
There are 7 discrepancies between the modelled and reference sequences:

Chain	Residue	Modelled	Actual	Comment	Reference
A	266	GLY	-	expression tag	UNP Q6DLV0
A	267	SER	-	expression tag	UNP Q6DLV0
A	268	HIS	-	expression tag	UNP Q6DLV0
A	269	MET	-	expression tag	UNP Q6DLV0
A	270	LEU	-	expression tag	UNP Q6DLV0
A	271	ASP	-	expression tag	UNP Q6DLV0
A	374	GLU	GLY	variant	UNP Q6DLV0

- Molecule 2 is ZINC ION (three-letter code: ZN) (formula: Zn).

Mol	Chain	Residues	Atoms		ZeroOcc	AltConf
2	A	2	Total	Zn	0	0
			2	2		

- Molecule 3 is 2-(4-methoxy-3-thiophen-3-yl-phenyl)ethanoic acid (three-letter code: 5V6) (formula: C₁₃H₁₂O₃S).



Mol	Chain	Residues	Atoms				ZeroOcc	AltConf
3	A	1	Total	C	O	S	0	0
			17	13	3	1		

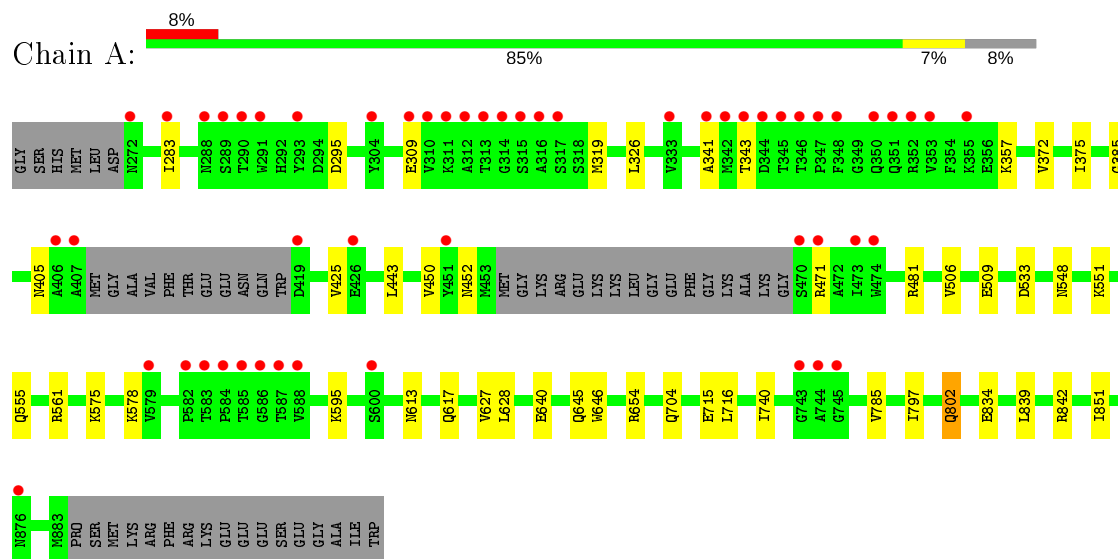
- Molecule 4 is water.

Mol	Chain	Residues	Atoms		ZeroOcc	AltConf
4	A	383	Total	O	0	0
			383	383		

3 Residue-property plots [i](#)

These plots are drawn for all protein, RNA and DNA chains in the entry. The first graphic for a chain summarises the proportions of the various outlier classes displayed in the second graphic. The second graphic shows the sequence view annotated by issues in geometry and electron density. Residues are color-coded according to the number of geometric quality criteria for which they contain at least one outlier: green = 0, yellow = 1, orange = 2 and red = 3 or more. A red dot above a residue indicates a poor fit to the electron density ($RSRZ > 2$). Stretches of 2 or more consecutive residues without any outlier are shown as a green connector. Residues present in the sample, but not in the model, are shown in grey.

• Molecule 1: Genome polyprotein



4 Data and refinement statistics

Property	Value	Source
Space group	C 2 2 21	Depositor
Cell constants a, b, c, α , β , γ	161.70Å 178.33Å 57.93Å 90.00° 90.00° 90.00°	Depositor
Resolution (Å)	40.00 – 2.00 39.93 – 2.00	Depositor EDS
% Data completeness (in resolution range)	99.3 (40.00-2.00) 99.4 (39.93-2.00)	Depositor EDS
R_{merge}	(Not available)	Depositor
R_{sym}	0.09	Depositor
$\langle I/\sigma(I) \rangle$ ¹	2.12 (at 2.00Å)	Xtriage
Refinement program	BUSTER-TNT BUSTER 2.11.5	Depositor
R, R_{free}	0.186 , 0.224 0.192 , 0.230	Depositor DCC
R_{free} test set	2868 reflections (5.06%)	wwPDB-VP
Wilson B-factor (Å ²)	27.3	Xtriage
Anisotropy	0.614	Xtriage
Bulk solvent k_{sol} (e/Å ³), B_{sol} (Å ²)	0.35 , 55.9	EDS
L-test for twinning ²	$\langle L \rangle = 0.49$, $\langle L^2 \rangle = 0.32$	Xtriage
Estimated twinning fraction	No twinning to report.	Xtriage
F_o, F_c correlation	0.96	EDS
Total number of atoms	5182	wwPDB-VP
Average B, all atoms (Å ²)	39.0	wwPDB-VP

Xtriage's analysis on translational NCS is as follows: *The largest off-origin peak in the Patterson function is 4.88% of the height of the origin peak. No significant pseudotranslation is detected.*

¹Intensities estimated from amplitudes.

²Theoretical values of $\langle |L| \rangle$, $\langle L^2 \rangle$ for acentric reflections are 0.5, 0.333 respectively for untwinned datasets, and 0.375, 0.2 for perfectly twinned datasets.

5 Model quality

5.1 Standard geometry

Bond lengths and bond angles in the following residue types are not validated in this section: ZN, 5V6

The Z score for a bond length (or angle) is the number of standard deviations the observed value is removed from the expected value. A bond length (or angle) with $|Z| > 5$ is considered an outlier worth inspection. RMSZ is the root-mean-square of all Z scores of the bond lengths (or angles).

Mol	Chain	Bond lengths		Bond angles	
		RMSZ	$\# Z > 5$	RMSZ	$\# Z > 5$
1	A	0.50	0/4910	0.63	0/6650

There are no bond length outliers.

There are no bond angle outliers.

There are no chirality outliers.

There are no planarity outliers.

5.2 Too-close contacts

In the following table, the Non-H and H(model) columns list the number of non-hydrogen atoms and hydrogen atoms in the chain respectively. The H(added) column lists the number of hydrogen atoms added and optimized by MolProbity. The Clashes column lists the number of clashes within the asymmetric unit, whereas Symm-Clashes lists symmetry related clashes.

Mol	Chain	Non-H	H(model)	H(added)	Clashes	Symm-Clashes
1	A	4780	0	4678	14	0
2	A	2	0	0	0	0
3	A	17	0	0	0	0
4	A	383	0	0	0	0
All	All	5182	0	4678	14	0

The all-atom clashscore is defined as the number of clashes found per 1000 atoms (including hydrogen atoms). The all-atom clashscore for this structure is 1.

All (14) close contacts within the same asymmetric unit are listed below, sorted by their clash magnitude.

Atom-1	Atom-2	Interatomic distance (Å)	Clash overlap (Å)
1:A:802:GLN:H	1:A:802:GLN:HE21	1.19	0.88
1:A:716:LEU:HD21	1:A:839:LEU:HD23	1.79	0.64
1:A:385:GLY:HA3	1:A:555:GLN:HE22	1.64	0.63
1:A:372:VAL:HG11	1:A:628:LEU:HD11	1.89	0.55
1:A:375:ILE:HD11	1:A:640:GLU:HG2	1.93	0.50
1:A:548:ASN:HD22	1:A:551:LYS:HE2	1.77	0.49
1:A:283:ILE:HD11	1:A:450:VAL:HG21	1.97	0.46
1:A:452:ASN:HD21	1:A:578:LYS:HD2	1.79	0.46
1:A:704:GLN:NE2	1:A:715:GLU:H	2.15	0.45
1:A:646:TRP:CZ2	1:A:654:ARG:HG3	2.52	0.44
1:A:613:ASN:O	1:A:617:GLN:HG2	2.19	0.42
1:A:341:ALA:HA	1:A:740:ILE:HD11	2.02	0.42
1:A:506:VAL:O	1:A:509:GLU:HG2	2.21	0.40
1:A:627:VAL:HG21	1:A:646:TRP:CD1	2.56	0.40

There are no symmetry-related clashes.

5.3 Torsion angles [i](#)

5.3.1 Protein backbone [i](#)

In the following table, the Percentiles column shows the percent Ramachandran outliers of the chain as a percentile score with respect to all X-ray entries followed by that with respect to entries of similar resolution.

The Analysed column shows the number of residues for which the backbone conformation was analysed, and the total number of residues.

Mol	Chain	Analysed	Favoured	Allowed	Outliers	Percentiles	
1	A	582/635 (92%)	567 (97%)	14 (2%)	1 (0%)	47	44

All (1) Ramachandran outliers are listed below:

Mol	Chain	Res	Type
1	A	343	THR

5.3.2 Protein sidechains [i](#)

In the following table, the Percentiles column shows the percent sidechain outliers of the chain as a percentile score with respect to all X-ray entries followed by that with respect to entries of similar resolution.

The Analysed column shows the number of residues for which the sidechain conformation was analysed, and the total number of residues.

Mol	Chain	Analysed	Rotameric	Outliers	Percentiles	
1	A	513/552 (93%)	492 (96%)	21 (4%)	30	28

All (21) residues with a non-rotameric sidechain are listed below:

Mol	Chain	Res	Type
1	A	295	ASP
1	A	309	GLU
1	A	319	MET
1	A	326	LEU
1	A	357	LYS
1	A	405	ASN
1	A	425	VAL
1	A	443	LEU
1	A	471	ARG
1	A	481	ARG
1	A	533	ASP
1	A	561	ARG
1	A	575	LYS
1	A	595	LYS
1	A	645	GLN
1	A	785	VAL
1	A	797	ILE
1	A	802	GLN
1	A	834	GLU
1	A	842	ARG
1	A	851	ILE

Some sidechains can be flipped to improve hydrogen bonding and reduce clashes. All (11) such sidechains are listed below:

Mol	Chain	Res	Type
1	A	297	ASN
1	A	452	ASN
1	A	548	ASN
1	A	555	GLN
1	A	562	GLN
1	A	682	ASN
1	A	704	GLN
1	A	760	GLN
1	A	768	HIS

Continued on next page...

Continued from previous page...

Mol	Chain	Res	Type
1	A	802	GLN
1	A	835	ASN

5.3.3 RNA ⓘ

There are no RNA molecules in this entry.

5.4 Non-standard residues in protein, DNA, RNA chains ⓘ

There are no non-standard protein/DNA/RNA residues in this entry.

5.5 Carbohydrates ⓘ

There are no carbohydrates in this entry.

5.6 Ligand geometry ⓘ

Of 3 ligands modelled in this entry, 2 are monoatomic - leaving 1 for Mogul analysis.

In the following table, the Counts columns list the number of bonds (or angles) for which Mogul statistics could be retrieved, the number of bonds (or angles) that are observed in the model and the number of bonds (or angles) that are defined in the Chemical Component Dictionary. The Link column lists molecule types, if any, to which the group is linked. The Z score for a bond length (or angle) is the number of standard deviations the observed value is removed from the expected value. A bond length (or angle) with $|Z| > 2$ is considered an outlier worth inspection. RMSZ is the root-mean-square of all Z scores of the bond lengths (or angles).

Mol	Type	Chain	Res	Link	Bond lengths			Bond angles		
					Counts	RMSZ	$\# Z > 2$	Counts	RMSZ	$\# Z > 2$
3	5V6	A	1003	-	15,18,18	2.02	3 (20%)	16,24,24	2.73	5 (31%)

In the following table, the Chirals column lists the number of chiral outliers, the number of chiral centers analysed, the number of these observed in the model and the number defined in the Chemical Component Dictionary. Similar counts are reported in the Torsion and Rings columns. '-' means no outliers of that kind were identified.

Mol	Type	Chain	Res	Link	Chirals	Torsions	Rings
3	5V6	A	1003	-	-	0/8/10/10	0/2/2/2

All (3) bond length outliers are listed below:

Mol	Chain	Res	Type	Atoms	Z	Observed(Å)	Ideal(Å)
3	A	1003	5V6	C6-C5	5.88	1.40	1.37
3	A	1003	5V6	C4-C9	4.10	1.49	1.40
3	A	1003	5V6	C6-S	2.09	1.73	1.70

All (5) bond angle outliers are listed below:

Mol	Chain	Res	Type	Atoms	Z	Observed(°)	Ideal(°)
3	A	1003	5V6	C5-C6-S	-9.35	106.26	112.29
3	A	1003	5V6	C7-S-C6	2.80	98.08	92.37
3	A	1003	5V6	C10-O2-C9	2.58	121.42	117.53
3	A	1003	5V6	O2-C9-C4	2.17	119.49	116.26
3	A	1003	5V6	C8-C5-C4	-2.05	124.42	126.32

There are no chirality outliers.

There are no torsion outliers.

There are no ring outliers.

No monomer is involved in short contacts.

5.7 Other polymers [i](#)

There are no such residues in this entry.

5.8 Polymer linkage issues [i](#)

There are no chain breaks in this entry.

6 Fit of model and data ⓘ

6.1 Protein, DNA and RNA chains ⓘ

In the following table, the column labelled ‘#RSRZ> 2’ contains the number (and percentage) of RSRZ outliers, followed by percent RSRZ outliers for the chain as percentile scores relative to all X-ray entries and entries of similar resolution. The OWAB column contains the minimum, median, 95th percentile and maximum values of the occupancy-weighted average B-factor per residue. The column labelled ‘Q< 0.9’ lists the number of (and percentage) of residues with an average occupancy less than 0.9.

Mol	Chain	Analysed	<RSRZ>	#RSRZ>2	OWAB(Å ²)	Q<0.9
1	A	585/635 (92%)	0.29	53 (9%) 9 8	18, 34, 78, 117	0

All (53) RSRZ outliers are listed below:

Mol	Chain	Res	Type	RSRZ
1	A	407	ALA	12.4
1	A	312	ALA	8.2
1	A	348	PHE	6.8
1	A	406	ALA	6.3
1	A	419	ASP	6.3
1	A	353	VAL	6.2
1	A	315	SER	5.5
1	A	473	ILE	5.2
1	A	316	ALA	5.1
1	A	470	SER	4.8
1	A	344	ASP	4.7
1	A	346	THR	4.5
1	A	743	GLY	4.2
1	A	290	THR	4.2
1	A	347	PRO	4.1
1	A	745	GLY	4.1
1	A	584	PRO	4.1
1	A	293	TYR	4.0
1	A	343	THR	4.0
1	A	474	TRP	3.7
1	A	289	SER	3.6
1	A	345	THR	3.6
1	A	426	GLU	3.5
1	A	582	PRO	3.4
1	A	586	GLY	3.4
1	A	744	ALA	3.4
1	A	313	THR	3.4

Continued on next page...

Continued from previous page...

Mol	Chain	Res	Type	RSRZ
1	A	310	VAL	3.3
1	A	341	ALA	3.1
1	A	355	LYS	3.0
1	A	288	ASN	2.9
1	A	471	ARG	2.9
1	A	583	THR	2.9
1	A	587	THR	2.9
1	A	876	ASN	2.9
1	A	333	VAL	2.8
1	A	314	GLY	2.7
1	A	291	TRP	2.7
1	A	342	MET	2.7
1	A	283	ILE	2.7
1	A	588	VAL	2.6
1	A	352	ARG	2.5
1	A	311	LYS	2.5
1	A	317	SER	2.5
1	A	600	SER	2.4
1	A	585	THR	2.4
1	A	451	TYR	2.3
1	A	350	GLN	2.2
1	A	309	GLU	2.2
1	A	579	VAL	2.2
1	A	304	TYR	2.2
1	A	351	GLN	2.1
1	A	272	ASN	2.0

6.2 Non-standard residues in protein, DNA, RNA chains [\(i\)](#)

There are no non-standard protein/DNA/RNA residues in this entry.

6.3 Carbohydrates [\(i\)](#)

There are no carbohydrates in this entry.

6.4 Ligands [\(i\)](#)

In the following table, the Atoms column lists the number of modelled atoms in the group and the number defined in the chemical component dictionary. The B-factors column lists the minimum, median, 95th percentile and maximum values of B factors of atoms in the group. The column labelled 'Q< 0.9' lists the number of atoms with occupancy less than 0.9.

Mol	Type	Chain	Res	Atoms	RSCC	RSR	B-factors(\AA^2)	Q<0.9
3	5V6	A	1003	17/17	0.97	0.10	26,28,41,43	0
2	ZN	A	1002	1/1	0.99	0.07	37,37,37,37	0
2	ZN	A	1001	1/1	1.00	0.11	23,23,23,23	0

6.5 Other polymers [i](#)

There are no such residues in this entry.