



Full wwPDB X-ray Structure Validation Report ⓘ

May 13, 2020 – 01:46 am BST

PDB ID : 6F4T
Title : Human JMJD5 (W414C) in complex with Mn(II), NOG and RCCD1 (139-143)
(complex-5)
Authors : Chowdhury, R.; Islam, M.S.; Schofield, C.J.
Deposited on : 2017-11-30
Resolution : 1.22 Å(reported)

This is a Full wwPDB X-ray Structure Validation Report for a publicly released PDB entry.

We welcome your comments at validation@mail.wwpdb.org

A user guide is available at

<https://www.wwpdb.org/validation/2017/XrayValidationReportHelp>

with specific help available everywhere you see the ⓘ symbol.

The following versions of software and data (see [references ⓘ](#)) were used in the production of this report:

MolProbity : 4.02b-467
Mogul : 1.8.5 (274361), CSD as541be (2020)
Xtriage (Phenix) : 1.13
EDS : 2.11
Percentile statistics : 20191225.v01 (using entries in the PDB archive December 25th 2019)
Refmac : 5.8.0158
CCP4 : 7.0.044 (Gargrove)
Ideal geometry (proteins) : Engh & Huber (2001)
Ideal geometry (DNA, RNA) : Parkinson et al. (1996)
Validation Pipeline (wwPDB-VP) : 2.11

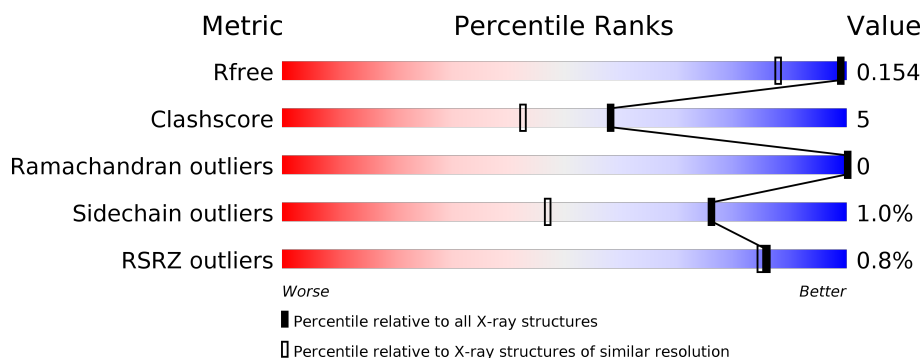
1 Overall quality at a glance

The following experimental techniques were used to determine the structure:

X-RAY DIFFRACTION

The reported resolution of this entry is 1.22 Å.

Percentile scores (ranging between 0-100) for global validation metrics of the entry are shown in the following graphic. The table shows the number of entries on which the scores are based.



Metric	Whole archive (#Entries)	Similar resolution (#Entries, resolution range(Å))
R_{free}	130704	1232 (1.24-1.20)
Clashscore	141614	1294 (1.24-1.20)
Ramachandran outliers	138981	1251 (1.24-1.20)
Sidechain outliers	138945	1250 (1.24-1.20)
RSRZ outliers	127900	1209 (1.24-1.20)

The table below summarises the geometric issues observed across the polymeric chains and their fit to the electron density. The red, orange, yellow and green segments on the lower bar indicate the fraction of residues that contain outliers for ≥ 3 , 2, 1 and 0 types of geometric quality criteria respectively. A grey segment represents the fraction of residues that are not modelled. The numeric value for each fraction is indicated below the corresponding segment, with a dot representing fractions $\leq 5\%$. The upper red bar (where present) indicates the fraction of residues that have poor fit to the electron density. The numeric value is given above the bar.

Mol	Chain	Length	Quality of chain
1	A	255	
2	B	5	

2 Entry composition

There are 7 unique types of molecules in this entry. The entry contains 4705 atoms, of which 2144 are hydrogens and 0 are deuteriums.

In the tables below, the ZeroOcc column contains the number of atoms modelled with zero occupancy, the AltConf column contains the number of residues with at least one atom in alternate conformation and the Trace column contains the number of residues modelled with at most 2 atoms.

- Molecule 1 is a protein called JmjC domain-containing protein 5.

Mol	Chain	Residues	Atoms						ZeroOcc	AltConf	Trace
			Total	C	H	N	O	S			
1	A	235	4223	1369	2080	367	398	9	0	69	0

There are 24 discrepancies between the modelled and reference sequences:

Chain	Residue	Modelled	Actual	Comment	Reference
A	162	HIS	-	expression tag	UNP Q8N371
A	163	HIS	-	expression tag	UNP Q8N371
A	164	HIS	-	expression tag	UNP Q8N371
A	165	HIS	-	expression tag	UNP Q8N371
A	166	HIS	-	expression tag	UNP Q8N371
A	167	HIS	-	expression tag	UNP Q8N371
A	168	SER	-	expression tag	UNP Q8N371
A	169	SER	-	expression tag	UNP Q8N371
A	170	GLY	-	expression tag	UNP Q8N371
A	171	VAL	-	expression tag	UNP Q8N371
A	172	ASP	-	expression tag	UNP Q8N371
A	173	LEU	-	expression tag	UNP Q8N371
A	174	GLY	-	expression tag	UNP Q8N371
A	175	THR	-	expression tag	UNP Q8N371
A	176	GLU	-	expression tag	UNP Q8N371
A	177	ASN	-	expression tag	UNP Q8N371
A	178	LEU	-	expression tag	UNP Q8N371
A	179	TYR	-	expression tag	UNP Q8N371
A	180	PHE	-	expression tag	UNP Q8N371
A	181	GLN	-	expression tag	UNP Q8N371
A	182	SER	-	expression tag	UNP Q8N371
A	217	ALA	CYS	engineered mutation	UNP Q8N371
A	232	ALA	CYS	engineered mutation	UNP Q8N371
A	414	CSO	TRP	engineered mutation	UNP Q8N371

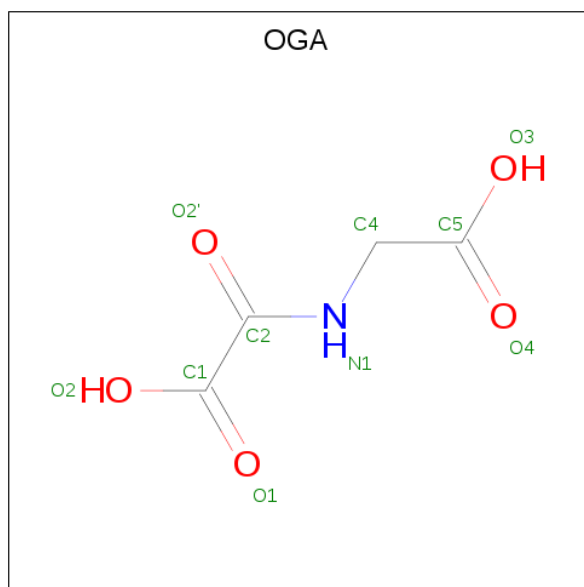
- Molecule 2 is a protein called RCC1 domain-containing protein 1.

Mol	Chain	Residues	Atoms						ZeroOcc	AltConf	Trace
2	B	3	Total	C	H	N	O	S	0	3	0
			53	15	25	7	4	2			

- Molecule 3 is MANGANESE (II) ION (three-letter code: MN) (formula: Mn).

Mol	Chain	Residues	Atoms		ZeroOcc	AltConf
3	A	1	Total	Mn	0	0
			1	1		

- Molecule 4 is N-OXALYLGLYCINE (three-letter code: OGA) (formula: C₄H₅NO₅).



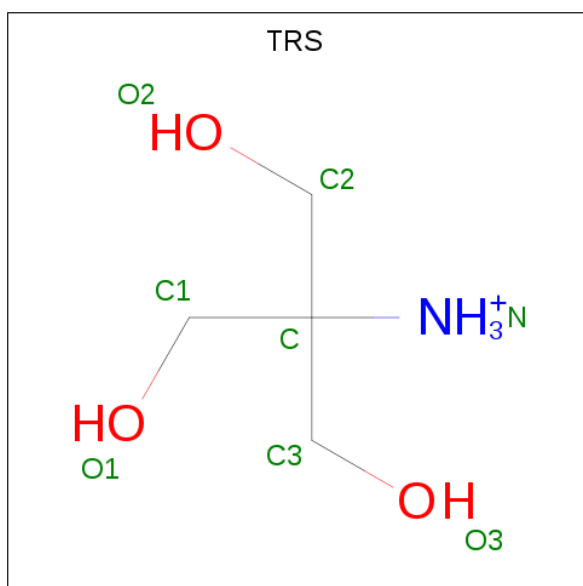
Mol	Chain	Residues	Atoms					ZeroOcc	AltConf
4	A	1	Total	C	H	N	O	0	0
			13	4	3	1	5		

- Molecule 5 is GLYCEROL (three-letter code: GOL) (formula: C₃H₈O₃).



Mol	Chain	Residues	Atoms				ZeroOcc	AltConf
5	A	1	Total	C	H	O	0	0
			14	3	8	3		
5	A	1	Total	C	H	O	0	0
			14	3	8	3		
5	A	1	Total	C	H	O	0	0
			14	3	8	3		

- Molecule 6 is 2-AMINO-2-HYDROXYMETHYL-PROPANE-1,3-DIOL (three-letter code: TRS) (formula: $C_4H_{12}NO_3$).



Mol	Chain	Residues	Atoms					ZeroOcc	AltConf
6	A	1	Total	C	H	N	O	0	0
			20	4	12	1	3		

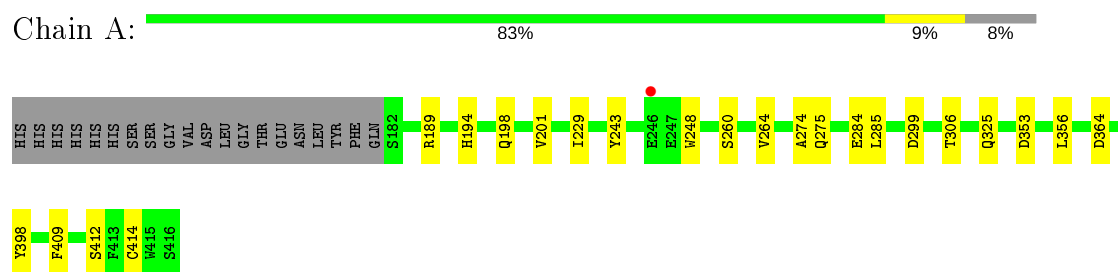
- Molecule 7 is water.

Mol	Chain	Residues	Atoms		ZeroOcc	AltConf
7	A	336	Total	O	0	34
			351	351		
7	B	2	Total	O	0	0
			2	2		

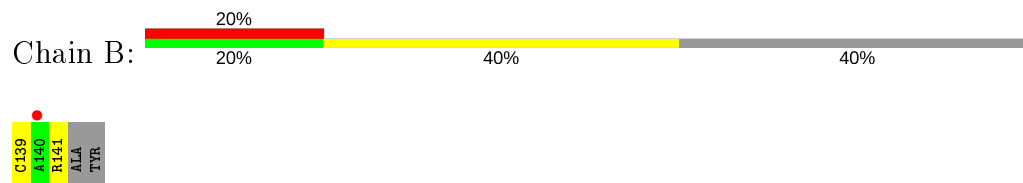
3 Residue-property plots [i](#)

These plots are drawn for all protein, RNA and DNA chains in the entry. The first graphic for a chain summarises the proportions of the various outlier classes displayed in the second graphic. The second graphic shows the sequence view annotated by issues in geometry and electron density. Residues are color-coded according to the number of geometric quality criteria for which they contain at least one outlier: green = 0, yellow = 1, orange = 2 and red = 3 or more. A red dot above a residue indicates a poor fit to the electron density ($RSRZ > 2$). Stretches of 2 or more consecutive residues without any outlier are shown as a green connector. Residues present in the sample, but not in the model, are shown in grey.

- Molecule 1: JmjC domain-containing protein 5



- Molecule 2: RCC1 domain-containing protein 1



4 Data and refinement statistics

Property	Value	Source
Space group	P 21 21 21	Depositor
Cell constants a, b, c, α , β , γ	49.14Å 65.17Å 78.45Å 90.00° 90.00° 90.00°	Depositor
Resolution (Å)	39.23 – 1.22 39.23 – 1.22	Depositor EDS
% Data completeness (in resolution range)	99.5 (39.23-1.22) 99.5 (39.23-1.22)	Depositor EDS
R_{merge}	0.05	Depositor
R_{sym}	(Not available)	Depositor
$\langle I/\sigma(I) \rangle$ ¹	1.65 (at 1.22Å)	Xtriage
Refinement program	PHENIX (1.12_2829: ???)	Depositor
R, R_{free}	0.141 , 0.154 0.142 , 0.154	Depositor DCC
R_{free} test set	3769 reflections (5.01%)	wwPDB-VP
Wilson B-factor (Å ²)	16.0	Xtriage
Anisotropy	0.337	Xtriage
Bulk solvent k_{sol} (e/Å ³), B_{sol} (Å ²)	0.41 , 53.5	EDS
L-test for twinning ²	$\langle L \rangle = 0.49$, $\langle L^2 \rangle = 0.32$	Xtriage
Estimated twinning fraction	No twinning to report.	Xtriage
F_o, F_c correlation	0.98	EDS
Total number of atoms	4705	wwPDB-VP
Average B, all atoms (Å ²)	26.0	wwPDB-VP

Xtriage's analysis on translational NCS is as follows: *The largest off-origin peak in the Patterson function is 6.42% of the height of the origin peak. No significant pseudotranslation is detected.*

¹Intensities estimated from amplitudes.

²Theoretical values of $\langle |L| \rangle$, $\langle L^2 \rangle$ for acentric reflections are 0.5, 0.333 respectively for untwinned datasets, and 0.375, 0.2 for perfectly twinned datasets.

5 Model quality

5.1 Standard geometry

Bond lengths and bond angles in the following residue types are not validated in this section: GOL, CSO, MN, OGA, TRS

The Z score for a bond length (or angle) is the number of standard deviations the observed value is removed from the expected value. A bond length (or angle) with $|Z| > 5$ is considered an outlier worth inspection. RMSZ is the root-mean-square of all Z scores of the bond lengths (or angles).

Mol	Chain	Bond lengths		Bond angles	
		RMSZ	$\# Z > 5$	RMSZ	$\# Z > 5$
1	A	0.86	0/2380	0.90	0/3239
2	B	1.30	0/27	1.19	0/34
All	All	0.87	0/2407	0.90	0/3273

There are no bond length outliers.

There are no bond angle outliers.

There are no chirality outliers.

There are no planarity outliers.

5.2 Too-close contacts

In the following table, the Non-H and H(model) columns list the number of non-hydrogen atoms and hydrogen atoms in the chain respectively. The H(added) column lists the number of hydrogen atoms added and optimized by MolProbity. The Clashes column lists the number of clashes within the asymmetric unit, whereas Symm-Clashes lists symmetry related clashes.

Mol	Chain	Non-H	H(model)	H(added)	Clashes	Symm-Clashes
1	A	2143	2080	1861	20	0
2	B	28	25	25	2	0
3	A	1	0	0	0	0
4	A	10	3	3	0	0
5	A	18	24	24	0	0
6	A	8	12	11	3	1
7	A	351	0	0	8	1
7	B	2	0	0	0	0
All	All	2561	2144	1924	21	1

The all-atom clashscore is defined as the number of clashes found per 1000 atoms (including hydrogen atoms). The all-atom clashscore for this structure is 5.

All (21) close contacts within the same asymmetric unit are listed below, sorted by their clash magnitude.

Atom-1	Atom-2	Interatomic distance (Å)	Clash overlap (Å)
1:A:364[A]:ASP:OD1	7:A:601[A]:HOH:O	1.84	0.94
1:A:201:VAL:O	6:A:506:TRS:H32	1.69	0.93
1:A:201:VAL:O	6:A:506:TRS:C3	2.43	0.67
1:A:229[B]:ILE:HG21	1:A:285:LEU:HD21	1.82	0.61
1:A:189[B]:ARG:HD2	7:A:831:HOH:O	2.03	0.56
1:A:229[B]:ILE:HD11	1:A:284:GLU:HB3	1.87	0.55
1:A:194:HIS:CE1	1:A:198:GLN:HG3	2.44	0.52
1:A:260[A]:SER:HA	1:A:264[A]:VAL:HG22	1.94	0.49
1:A:306[B]:THR:OG1	1:A:414[B]:CSO:HB3	2.13	0.49
1:A:325:GLN:HB2	1:A:414[A]:CSO:SG	2.53	0.49
1:A:306[A]:THR:HG21	7:A:709:HOH:O	2.13	0.48
1:A:412[A]:SER:HG	2:B:139[A]:CYS:N	2.13	0.47
1:A:299:ASP:OD2	7:A:602:HOH:O	2.21	0.44
1:A:353[B]:ASP:CG	7:A:855:HOH:O	2.56	0.43
1:A:243[A]:TYR:HA	1:A:248[A]:TRP:CD1	2.54	0.43
1:A:274:ALA:O	1:A:275[A]:GLN:HG3	2.19	0.43
1:A:356[A]:LEU:HG	7:A:784:HOH:O	2.20	0.42
1:A:264[A]:VAL:HG21	7:A:881:HOH:O	2.20	0.42
6:A:506:TRS:O3	7:A:603:HOH:O	2.22	0.41
1:A:275[A]:GLN:CD	2:B:141[A]:ARG:HG3	2.41	0.40

All (1) symmetry-related close contacts are listed below. The label for Atom-2 includes the symmetry operator and encoded unit-cell translations to be applied.

Atom-1	Atom-2	Interatomic distance (Å)	Clash overlap (Å)
6:A:506:TRS:H11	7:A:633:HOH:O[4_454]	1.50	0.10

5.3 Torsion angles ⓘ

5.3.1 Protein backbone ⓘ

In the following table, the Percentiles column shows the percent Ramachandran outliers of the chain as a percentile score with respect to all X-ray entries followed by that with respect to entries of similar resolution.

The Analysed column shows the number of residues for which the backbone conformation was analysed, and the total number of residues.

Mol	Chain	Analysed	Favoured	Allowed	Outliers	Percentiles	
1	A	281/255 (110%)	275 (98%)	6 (2%)	0	100	100
2	B	1/5 (20%)	1 (100%)	0	0	100	100
All	All	282/260 (108%)	276 (98%)	6 (2%)	0	100	100

There are no Ramachandran outliers to report.

5.3.2 Protein sidechains ⓘ

In the following table, the Percentiles column shows the percent sidechain outliers of the chain as a percentile score with respect to all X-ray entries followed by that with respect to entries of similar resolution.

The Analysed column shows the number of residues for which the sidechain conformation was analysed, and the total number of residues.

Mol	Chain	Analysed	Rotameric	Outliers	Percentiles	
1	A	252/230 (110%)	249 (99%)	3 (1%)	71	37
2	B	3/3 (100%)	3 (100%)	0	100	100
All	All	255/233 (109%)	252 (99%)	3 (1%)	76	37

All (3) residues with a non-rotameric sidechain are listed below:

Mol	Chain	Res	Type
1	A	398[A]	TYR
1	A	398[B]	TYR
1	A	409	PHE

Some sidechains can be flipped to improve hydrogen bonding and reduce clashes. There are no such sidechains identified.

5.3.3 RNA ⓘ

There are no RNA molecules in this entry.

5.4 Non-standard residues in protein, DNA, RNA chains ⓘ

2 non-standard protein/DNA/RNA residues are modelled in this entry.

In the following table, the Counts columns list the number of bonds (or angles) for which Mogul statistics could be retrieved, the number of bonds (or angles) that are observed in the model and

the number of bonds (or angles) that are defined in the Chemical Component Dictionary. The Link column lists molecule types, if any, to which the group is linked. The Z score for a bond length (or angle) is the number of standard deviations the observed value is removed from the expected value. A bond length (or angle) with $|Z| > 2$ is considered an outlier worth inspection. RMSZ is the root-mean-square of all Z scores of the bond lengths (or angles).

Mol	Type	Chain	Res	Link	Bond lengths			Bond angles		
					Counts	RMSZ	$\# Z > 2$	Counts	RMSZ	$\# Z > 2$
1	CSO	A	414[B]	1	3,6,7	1.00	0	0,6,8	0.00	-
1	CSO	A	414[A]	1,2	3,5,7	1.39	1 (33%)	0,5,8	0.00	-

In the following table, the Chirals column lists the number of chiral outliers, the number of chiral centers analysed, the number of these observed in the model and the number defined in the Chemical Component Dictionary. Similar counts are reported in the Torsion and Rings columns. '-' means no outliers of that kind were identified.

Mol	Type	Chain	Res	Link	Chirals	Torsions	Rings
1	CSO	A	414[B]	1	-	0/1/5/7	-
1	CSO	A	414[A]	1,2	-	1/1/4/7	-

All (1) bond length outliers are listed below:

Mol	Chain	Res	Type	Atoms	Z	Observed(Å)	Ideal(Å)
1	A	414[A]	CSO	O-C	2.01	1.28	1.19

There are no bond angle outliers.

There are no chirality outliers.

All (1) torsion outliers are listed below:

Mol	Chain	Res	Type	Atoms
1	A	414[A]	CSO	N-CA-CB-SG

There are no ring outliers.

2 monomers are involved in 2 short contacts:

Mol	Chain	Res	Type	Clashes	Symm-Clashes
1	A	414[B]	CSO	1	0
1	A	414[A]	CSO	1	0

5.5 Carbohydrates ⓘ

There are no carbohydrates in this entry.

5.6 Ligand geometry

Of 6 ligands modelled in this entry, 1 is monoatomic - leaving 5 for Mogul analysis.

In the following table, the Counts columns list the number of bonds (or angles) for which Mogul statistics could be retrieved, the number of bonds (or angles) that are observed in the model and the number of bonds (or angles) that are defined in the Chemical Component Dictionary. The Link column lists molecule types, if any, to which the group is linked. The Z score for a bond length (or angle) is the number of standard deviations the observed value is removed from the expected value. A bond length (or angle) with $|Z| > 2$ is considered an outlier worth inspection. RMSZ is the root-mean-square of all Z scores of the bond lengths (or angles).

Mol	Type	Chain	Res	Link	Bond lengths			Bond angles		
					Counts	RMSZ	$\# Z > 2$	Counts	RMSZ	$\# Z > 2$
4	OGA	A	502	3	3,9,9	2.00	1 (33%)	4,11,11	1.50	1 (25%)
5	GOL	A	505	-	5,5,5	0.99	0	5,5,5	0.85	0
5	GOL	A	503	-	5,5,5	1.05	0	5,5,5	1.20	1 (20%)
5	GOL	A	504	-	5,5,5	1.06	0	5,5,5	0.86	0
6	TRS	A	506	-	7,7,7	1.28	1 (14%)	9,9,9	0.86	0

In the following table, the Chirals column lists the number of chiral outliers, the number of chiral centers analysed, the number of these observed in the model and the number defined in the Chemical Component Dictionary. Similar counts are reported in the Torsion and Rings columns. '-' means no outliers of that kind were identified.

Mol	Type	Chain	Res	Link	Chirals	Torsions	Rings
4	OGA	A	502	3	-	0/3/9/9	-
5	GOL	A	505	-	-	0/4/4/4	-
5	GOL	A	503	-	-	0/4/4/4	-
5	GOL	A	504	-	-	0/4/4/4	-
6	TRS	A	506	-	-	6/9/9/9	-

All (2) bond length outliers are listed below:

Mol	Chain	Res	Type	Atoms	Z	Observed(Å)	Ideal(Å)
4	A	502	OGA	O2'-C2	2.87	1.29	1.23
6	A	506	TRS	O3-C3	-2.80	1.32	1.42

All (2) bond angle outliers are listed below:

Mol	Chain	Res	Type	Atoms	Z	Observed(°)	Ideal(°)
4	A	502	OGA	C1-C2-N1	2.62	118.21	115.60
5	A	503	GOL	C3-C2-C1	-2.34	102.61	111.70

There are no chirality outliers.

All (6) torsion outliers are listed below:

Mol	Chain	Res	Type	Atoms
6	A	506	TRS	N-C-C1-O1
6	A	506	TRS	N-C-C2-O2
6	A	506	TRS	C1-C-C3-O3
6	A	506	TRS	N-C-C3-O3
6	A	506	TRS	C1-C-C2-O2
6	A	506	TRS	C2-C-C3-O3

There are no ring outliers.

1 monomer is involved in 4 short contacts:

Mol	Chain	Res	Type	Clashes	Symm-Clashes
6	A	506	TRS	3	1

5.7 Other polymers [i](#)

There are no such residues in this entry.

5.8 Polymer linkage issues [i](#)

There are no chain breaks in this entry.

6 Fit of model and data [i](#)

6.1 Protein, DNA and RNA chains [i](#)

In the following table, the column labelled ‘#RSRZ> 2’ contains the number (and percentage) of RSRZ outliers, followed by percent RSRZ outliers for the chain as percentile scores relative to all X-ray entries and entries of similar resolution. The OWAB column contains the minimum, median, 95th percentile and maximum values of the occupancy-weighted average B-factor per residue. The column labelled ‘Q< 0.9’ lists the number of (and percentage) of residues with an average occupancy less than 0.9.

Mol	Chain	Analysed	<RSRZ>	#RSRZ>2	OWAB(Å ²)	Q<0.9
1	A	234/255 (91%)	-0.43	1 (0%) 92 90	12, 19, 38, 62	15 (6%)
2	B	3/5 (60%)	1.58	1 (33%) 0 0	27, 27, 30, 36	3 (100%)
All	All	237/260 (91%)	-0.40	2 (0%) 86 85	12, 19, 38, 62	18 (7%)

All (2) RSRZ outliers are listed below:

Mol	Chain	Res	Type	RSRZ
1	A	246[A]	GLU	3.0
2	B	140[A]	ALA	2.3

6.2 Non-standard residues in protein, DNA, RNA chains [i](#)

In the following table, the Atoms column lists the number of modelled atoms in the group and the number defined in the chemical component dictionary. The B-factors column lists the minimum, median, 95th percentile and maximum values of B factors of atoms in the group. The column labelled ‘Q< 0.9’ lists the number of atoms with occupancy less than 0.9.

Mol	Type	Chain	Res	Atoms	RSCC	RSR	B-factors(Å ²)	Q<0.9
1	CSO	A	414[B]	7/8	0.98	0.05	14,16,20,20	10
1	CSO	A	414[A]	6/8	0.98	0.05	14,15,18,19	9

6.3 Carbohydrates [i](#)

There are no carbohydrates in this entry.

6.4 Ligands [i](#)

In the following table, the Atoms column lists the number of modelled atoms in the group and the number defined in the chemical component dictionary. The B-factors column lists the minimum,

median, 95th percentile and maximum values of B factors of atoms in the group. The column labelled 'Q< 0.9' lists the number of atoms with occupancy less than 0.9.

Mol	Type	Chain	Res	Atoms	RSCC	RSR	B-factors(Å ²)	Q<0.9
5	GOL	A	505	6/6	0.78	0.34	45,61,82,91	0
5	GOL	A	503	6/6	0.78	0.17	41,50,59,70	0
6	TRS	A	506	8/8	0.80	0.21	23,44,54,54	0
5	GOL	A	504	6/6	0.81	0.26	42,58,75,79	0
4	OGA	A	502	10/10	0.98	0.05	12,13,16,16	0
3	MN	A	501	1/1	1.00	0.08	13,13,13,13	0

6.5 Other polymers ⓘ

There are no such residues in this entry.