



Full wwPDB X-ray Structure Validation Report ⓘ

Oct 20, 2022 – 02:14 AM JST

PDB ID : 7F61
Title : Crystal structure of human histamine receptor H3R in complex with antagonist PF03654746
Authors : Peng, X.; Zhang, H.
Deposited on : 2021-06-23
Resolution : 2.60 Å(reported)

This is a Full wwPDB X-ray Structure Validation Report for a publicly released PDB entry.

We welcome your comments at validation@mail.wwpdb.org

A user guide is available at

<https://www.wwpdb.org/validation/2017/XrayValidationReportHelp>

with specific help available everywhere you see the ⓘ symbol.

The types of validation reports are described at

<http://www.wwpdb.org/validation/2017/FAQs#types>.

The following versions of software and data (see [references ⓘ](#)) were used in the production of this report:

MolProbity : 4.02b-467
Mogul : 1.8.5 (274361), CSD as541be (2020)
Xtriage (Phenix) : 1.13
EDS : 2.31.2
buster-report : 1.1.7 (2018)
Percentile statistics : 20191225.v01 (using entries in the PDB archive December 25th 2019)
Refmac : 5.8.0158
CCP4 : 7.0.044 (Gargrove)
Ideal geometry (proteins) : Engh & Huber (2001)
Ideal geometry (DNA, RNA) : Parkinson et al. (1996)
Validation Pipeline (wwPDB-VP) : 2.31.2

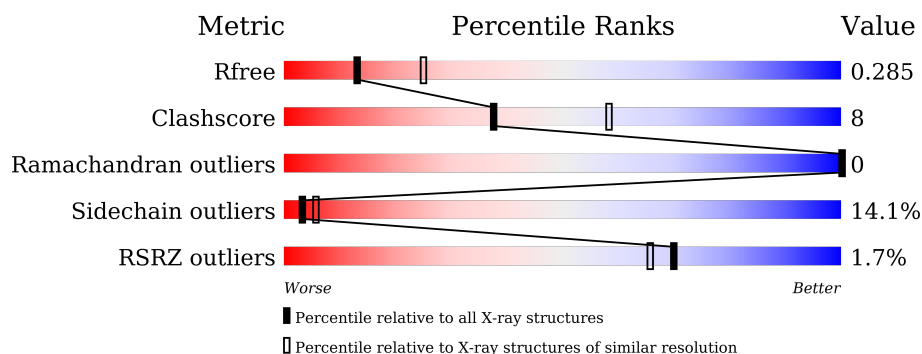
1 Overall quality at a glance

The following experimental techniques were used to determine the structure:

X-RAY DIFFRACTION

The reported resolution of this entry is 2.60 Å.

Percentile scores (ranging between 0-100) for global validation metrics of the entry are shown in the following graphic. The table shows the number of entries on which the scores are based.



Metric	Whole archive (#Entries)	Similar resolution (#Entries, resolution range(Å))
R_{free}	130704	3163 (2.60-2.60)
Clashscore	141614	3518 (2.60-2.60)
Ramachandran outliers	138981	3455 (2.60-2.60)
Sidechain outliers	138945	3455 (2.60-2.60)
RSRZ outliers	127900	3104 (2.60-2.60)

The table below summarises the geometric issues observed across the polymeric chains and their fit to the electron density. The red, orange, yellow and green segments of the lower bar indicate the fraction of residues that contain outliers for ≥ 3 , 2, 1 and 0 types of geometric quality criteria respectively. A grey segment represents the fraction of residues that are not modelled. The numeric value for each fraction is indicated below the corresponding segment, with a dot representing fractions $\leq 5\%$. The upper red bar (where present) indicates the fraction of residues that have poor fit to the electron density. The numeric value is given above the bar.

Mol	Chain	Length	Quality of chain
1	A	407	<div> <div>2%</div> <div> <div></div> <div>55%</div> <div>15%</div> <div>•</div> <div>26%</div> </div> </div>
2	B	147	<div> <div>2%</div> <div> <div></div> <div>52%</div> <div>19%</div> <div>•</div> <div>28%</div> </div> </div>

2 Entry composition

There are 5 unique types of molecules in this entry. The entry contains 3314 atoms, of which 0 are hydrogens and 0 are deuteriums.

In the tables below, the ZeroOcc column contains the number of atoms modelled with zero occupancy, the AltConf column contains the number of residues with at least one atom in alternate conformation and the Trace column contains the number of residues modelled with at most 2 atoms.

- Molecule 1 is a protein called Histamine H3 receptor.

Mol	Chain	Residues	Atoms					ZeroOcc	AltConf	Trace
1	A	301	Total	C	N	O	S	0	0	0
			2429	1611	409	396	13			

There is a discrepancy between the modelled and reference sequences:

Chain	Residue	Modelled	Actual	Comment	Reference
A	121	LYS	SER	engineered mutation	UNP Q9Y5N1

- Molecule 2 is a protein called Soluble cytochrome b562.

Mol	Chain	Residues	Atoms					ZeroOcc	AltConf	Trace
2	B	106	Total	C	N	O	S	0	0	0
			826	514	143	167	2			

There are 44 discrepancies between the modelled and reference sequences:

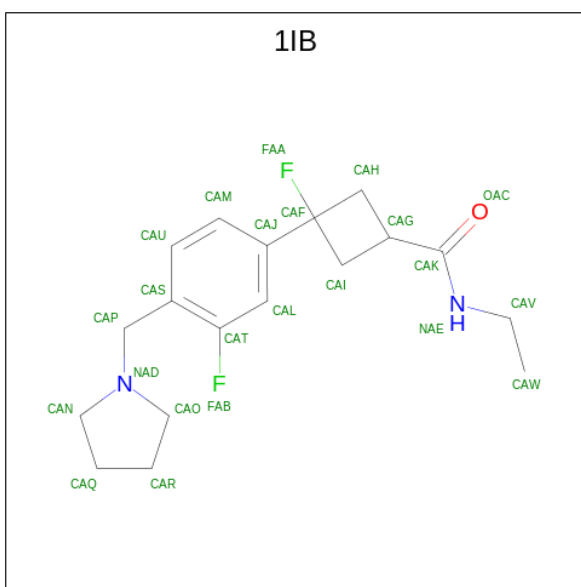
Chain	Residue	Modelled	Actual	Comment	Reference
B	-40	MET	-	initiating methionine	UNP P0ABE7
B	-39	LYS	-	expression tag	UNP P0ABE7
B	-38	THR	-	expression tag	UNP P0ABE7
B	-37	ILE	-	expression tag	UNP P0ABE7
B	-36	ILE	-	expression tag	UNP P0ABE7
B	-35	ALA	-	expression tag	UNP P0ABE7
B	-34	LEU	-	expression tag	UNP P0ABE7
B	-33	SER	-	expression tag	UNP P0ABE7
B	-32	TYR	-	expression tag	UNP P0ABE7
B	-31	ILE	-	expression tag	UNP P0ABE7
B	-30	PHE	-	expression tag	UNP P0ABE7
B	-29	CYS	-	expression tag	UNP P0ABE7
B	-28	LEU	-	expression tag	UNP P0ABE7
B	-27	VAL	-	expression tag	UNP P0ABE7
B	-26	PHE	-	expression tag	UNP P0ABE7

Continued on next page...

Continued from previous page...

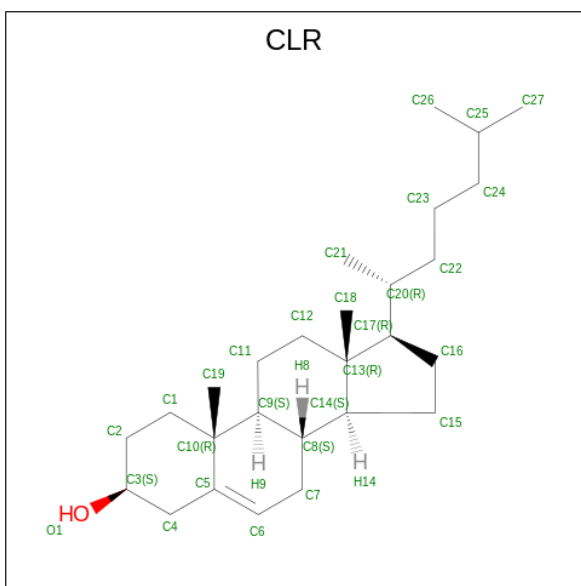
Chain	Residue	Modelled	Actual	Comment	Reference
B	-25	ALA	-	expression tag	UNP P0ABE7
B	-24	ASP	-	expression tag	UNP P0ABE7
B	-23	TYR	-	expression tag	UNP P0ABE7
B	-22	LYS	-	expression tag	UNP P0ABE7
B	-21	ASP	-	expression tag	UNP P0ABE7
B	-20	ASP	-	expression tag	UNP P0ABE7
B	-19	ASP	-	expression tag	UNP P0ABE7
B	-18	ASP	-	expression tag	UNP P0ABE7
B	-17	LYS	-	expression tag	UNP P0ABE7
B	-16	HIS	-	expression tag	UNP P0ABE7
B	-15	HIS	-	expression tag	UNP P0ABE7
B	-14	HIS	-	expression tag	UNP P0ABE7
B	-13	HIS	-	expression tag	UNP P0ABE7
B	-12	HIS	-	expression tag	UNP P0ABE7
B	-11	HIS	-	expression tag	UNP P0ABE7
B	-10	HIS	-	expression tag	UNP P0ABE7
B	-9	HIS	-	expression tag	UNP P0ABE7
B	-8	HIS	-	expression tag	UNP P0ABE7
B	-7	HIS	-	expression tag	UNP P0ABE7
B	-6	GLU	-	expression tag	UNP P0ABE7
B	-5	ASN	-	expression tag	UNP P0ABE7
B	-4	LEU	-	expression tag	UNP P0ABE7
B	-3	TYR	-	expression tag	UNP P0ABE7
B	-2	PHE	-	expression tag	UNP P0ABE7
B	-1	GLN	-	expression tag	UNP P0ABE7
B	0	GLY	-	expression tag	UNP P0ABE7
B	7	TRP	MET	engineered mutation	UNP P0ABE7
B	102	ILE	HIS	engineered mutation	UNP P0ABE7
B	106	LEU	ARG	engineered mutation	UNP P0ABE7

- Molecule 3 is N-ethyl-3-fluoranyl-3-[3-fluoranyl-4-(pyrrolidin-1-ylmethyl)phenyl]cyclobutane-1-carboxamide (three-letter code: 1IB) (formula: C₁₈H₂₄F₂N₂O) (labeled as "Ligand of Interest" by depositor).



Mol	Chain	Residues	Atoms					ZeroOcc	AltConf
3	A	1	Total	C	F	N	O	0	0
			23	18	2	2	1		

- Molecule 4 is CHOLESTEROL (three-letter code: CLR) (formula: C₂₇H₄₆O).



Mol	Chain	Residues	Atoms			ZeroOcc	AltConf
4	A	1	Total	C	O	0	0
			28	27	1		

- Molecule 5 is water.

Mol	Chain	Residues	Atoms		ZeroOcc	AltConf
5	A	8	Total	O	0	0
			8	8		

4 Data and refinement statistics

Property	Value	Source
Space group	P 21 21 2	Depositor
Cell constants a, b, c, α , β , γ	71.12Å 165.62Å 42.65Å 90.00° 90.00° 90.00°	Depositor
Resolution (Å)	29.90 – 2.60 29.90 – 2.60	Depositor EDS
% Data completeness (in resolution range)	98.4 (29.90-2.60) 98.5 (29.90-2.60)	Depositor EDS
R_{merge}	0.15	Depositor
R_{sym}	(Not available)	Depositor
$\langle I/\sigma(I) \rangle$ ¹	1.40 (at 2.61Å)	Xtriage
Refinement program	REFMAC 5.8.0267	Depositor
R, R_{free}	0.229 , 0.285 0.229 , 0.285	Depositor DCC
R_{free} test set	789 reflections (4.94%)	wwPDB-VP
Wilson B-factor (Å ²)	39.4	Xtriage
Anisotropy	0.240	Xtriage
Bulk solvent k_{sol} (e/Å ³), B_{sol} (Å ²)	0.33 , 39.6	EDS
L-test for twinning ²	$\langle L \rangle = 0.46$, $\langle L^2 \rangle = 0.29$	Xtriage
Estimated twinning fraction	No twinning to report.	Xtriage
F_o, F_c correlation	0.92	EDS
Total number of atoms	3314	wwPDB-VP
Average B, all atoms (Å ²)	44.0	wwPDB-VP

Xtriage's analysis on translational NCS is as follows: *The largest off-origin peak in the Patterson function is 6.15% of the height of the origin peak. No significant pseudotranslation is detected.*

¹Intensities estimated from amplitudes.

²Theoretical values of $\langle |L| \rangle$, $\langle L^2 \rangle$ for acentric reflections are 0.5, 0.333 respectively for untwinned datasets, and 0.375, 0.2 for perfectly twinned datasets.

5 Model quality

5.1 Standard geometry

Bond lengths and bond angles in the following residue types are not validated in this section: 1IB, CLR

The Z score for a bond length (or angle) is the number of standard deviations the observed value is removed from the expected value. A bond length (or angle) with $|Z| > 5$ is considered an outlier worth inspection. RMSZ is the root-mean-square of all Z scores of the bond lengths (or angles).

Mol	Chain	Bond lengths		Bond angles	
		RMSZ	$\# Z > 5$	RMSZ	$\# Z > 5$
1	A	0.67	0/2500	0.87	0/3405
2	B	0.66	0/836	0.81	0/1127
All	All	0.67	0/3336	0.85	0/4532

There are no bond length outliers.

There are no bond angle outliers.

There are no chirality outliers.

There are no planarity outliers.

5.2 Too-close contacts

In the following table, the Non-H and H(model) columns list the number of non-hydrogen atoms and hydrogen atoms in the chain respectively. The H(added) column lists the number of hydrogen atoms added and optimized by MolProbity. The Clashes column lists the number of clashes within the asymmetric unit, whereas Symm-Clashes lists symmetry-related clashes.

Mol	Chain	Non-H	H(model)	H(added)	Clashes	Symm-Clashes
1	A	2429	0	2462	37	0
2	B	826	0	829	15	0
3	A	23	0	0	0	0
4	A	28	0	46	2	0
5	A	8	0	0	1	0
All	All	3314	0	3337	51	0

The all-atom clashscore is defined as the number of clashes found per 1000 atoms (including hydrogen atoms). The all-atom clashscore for this structure is 8.

All (51) close contacts within the same asymmetric unit are listed below, sorted by their clash magnitude.

Atom-1	Atom-2	Interatomic distance (Å)	Clash overlap (Å)
1:A:199:LEU:O	1:A:203:SER:OG	1.89	0.91
1:A:181:SER:HB3	1:A:191:GLU:OE1	1.81	0.80
1:A:75:ASN:HD21	1:A:160:TRP:HE1	1.34	0.76
1:A:209:THR:HB	1:A:210:PRO:HD3	1.69	0.74
1:A:241:GLY:C	1:A:347:ARG:N	2.52	0.63
2:B:74:ASP:O	2:B:77:LYS:HB2	1.99	0.62
2:B:91:ALA:HA	2:B:94:LEU:HD23	1.81	0.62
2:B:65:PHE:O	2:B:69:VAL:HG23	1.99	0.61
1:A:27:ARG:N	2:B:106:LEU:C	2.56	0.59
2:B:78:LEU:HD13	2:B:86:GLU:HB3	1.85	0.58
1:A:186:GLY:HA3	2:B:103:GLN:OE1	2.04	0.57
1:A:391:ASP:HA	1:A:394:TYR:CE2	2.39	0.57
2:B:72:ILE:HG13	2:B:94:LEU:HD11	1.87	0.56
1:A:121:LYS:NZ	1:A:405:SER:OG	2.37	0.56
1:A:115:TYR:O	1:A:119:THR:HG23	2.07	0.54
1:A:203:SER:HB2	1:A:379:ILE:HG12	1.89	0.54
1:A:68:GLN:HG2	1:A:152:ALA:HB2	1.88	0.54
2:B:85:LYS:HE2	2:B:88:GLN:NE2	2.23	0.53
1:A:371:TRP:CE2	1:A:375:THR:HG21	2.44	0.53
2:B:14:LEU:HD21	2:B:95:LYS:HG2	1.91	0.53
1:A:234:ASP:O	1:A:238:GLU:HB3	2.09	0.52
1:A:218:ASN:HD21	1:A:360:LEU:HD13	1.75	0.51
1:A:238:GLU:O	1:A:347:ARG:N	2.45	0.50
2:B:91:ALA:O	2:B:94:LEU:HB2	2.11	0.50
1:A:233:LEU:HD22	1:A:237:ARG:HD2	1.94	0.50
1:A:94:TYR:OH	1:A:187:HIS:CB	2.60	0.49
1:A:381:ARG:HG2	1:A:389:VAL:HB	1.95	0.48
1:A:83:VAL:HG21	1:A:121:LYS:HZ2	1.78	0.47
1:A:83:VAL:HG21	1:A:121:LYS:NZ	2.30	0.47
1:A:94:TYR:OH	1:A:187:HIS:HB2	2.14	0.47
2:B:71:GLN:NE2	2:B:97:THR:OG1	2.48	0.46
2:B:63:HIS:O	2:B:67:ILE:HG13	2.16	0.46
1:A:113:VAL:O	1:A:117:LEU:HG	2.17	0.45
1:A:30:SER:O	1:A:34:THR:HG23	2.17	0.45
1:A:181:SER:CB	1:A:191:GLU:OE1	2.60	0.45
2:B:100:ALA:HB3	2:B:101:TYR:CD2	2.52	0.44
1:A:27:ARG:HA	2:B:106:LEU:O	2.18	0.44
1:A:80:ASP:OD1	1:A:121:LYS:HE2	2.18	0.43
4:A:502:CLR:H183	4:A:502:CLR:H20	1.91	0.43
1:A:231:LEU:HD12	1:A:232:ARG:NH1	2.34	0.43
1:A:104:ARG:O	1:A:107:CYS:HB3	2.18	0.43
1:A:88:ILE:HB	1:A:89:PRO:HD3	2.00	0.42

Continued on next page...

Continued from previous page...

Atom-1	Atom-2	Interatomic distance (Å)	Clash overlap (Å)
1:A:183:ILE:O	1:A:183:ILE:HG22	2.20	0.42
1:A:359:SER:HB3	5:A:608:HOH:O	2.19	0.42
1:A:190:ALA:O	1:A:193:PHE:HB2	2.19	0.42
1:A:75:ASN:HB3	1:A:124:ASN:HD21	1.85	0.42
1:A:412:TYR:HB2	1:A:413:PRO:HD3	2.02	0.42
2:B:12:ASP:O	2:B:15:LYS:HG2	2.20	0.42
1:A:428:CYS:N	1:A:429:PRO:CD	2.83	0.41
1:A:241:GLY:O	1:A:347:ARG:HA	2.20	0.41
4:A:502:CLR:H152	4:A:502:CLR:H181	1.80	0.40

There are no symmetry-related clashes.

5.3 Torsion angles [i](#)

5.3.1 Protein backbone [i](#)

In the following table, the Percentiles column shows the percent Ramachandran outliers of the chain as a percentile score with respect to all X-ray entries followed by that with respect to entries of similar resolution.

The Analysed column shows the number of residues for which the backbone conformation was analysed, and the total number of residues.

Mol	Chain	Analysed	Favoured	Allowed	Outliers	Percentiles	
1	A	297/407 (73%)	290 (98%)	7 (2%)	0	100	100
2	B	104/147 (71%)	101 (97%)	3 (3%)	0	100	100
All	All	401/554 (72%)	391 (98%)	10 (2%)	0	100	100

There are no Ramachandran outliers to report.

5.3.2 Protein sidechains [i](#)

In the following table, the Percentiles column shows the percent sidechain outliers of the chain as a percentile score with respect to all X-ray entries followed by that with respect to entries of similar resolution.

The Analysed column shows the number of residues for which the sidechain conformation was analysed, and the total number of residues.

Mol	Chain	Analysed	Rotameric	Outliers	Percentiles	
1	A	255/333 (77%)	216 (85%)	39 (15%)	2	4
2	B	86/124 (69%)	77 (90%)	9 (10%)	7	13
All	All	341/457 (75%)	293 (86%)	48 (14%)	3	6

All (48) residues with a non-rotameric sidechain are listed below:

Mol	Chain	Res	Type
1	A	33	TRP
1	A	34	THR
1	A	41	MET
1	A	43	LEU
1	A	44	LEU
1	A	66	ARG
1	A	69	ASN
1	A	74	LEU
1	A	95	VAL
1	A	99	ARG
1	A	104	ARG
1	A	106	LEU
1	A	119	THR
1	A	127	LEU
1	A	132	ARG
1	A	136	VAL
1	A	138	ARG
1	A	143	ARG
1	A	156	MET
1	A	178	SER
1	A	181	SER
1	A	183	ILE
1	A	185	GLU
1	A	187	HIS
1	A	191	GLU
1	A	195	ASN
1	A	199	LEU
1	A	200	ILE
1	A	203	SER
1	A	219	LEU
1	A	232	ARG
1	A	238	GLU
1	A	347	ARG
1	A	359	SER
1	A	360	LEU

Continued on next page...

Continued from previous page...

Mol	Chain	Res	Type
1	A	381	ARG
1	A	400	LEU
1	A	414	LEU
1	A	430	GLN
2	B	3	LEU
2	B	7	TRP
2	B	19	LYS
2	B	48	LEU
2	B	54	ASP
2	B	85	LYS
2	B	93	GLN
2	B	103	GLN
2	B	104	LYS

Sometimes sidechains can be flipped to improve hydrogen bonding and reduce clashes. All (12) such sidechains are listed below:

Mol	Chain	Res	Type
1	A	75	ASN
1	A	124	ASN
1	A	145	GLN
1	A	146	GLN
1	A	187	HIS
1	A	195	ASN
1	A	218	ASN
1	A	404	ASN
1	A	430	GLN
2	B	6	ASN
2	B	71	GLN
2	B	88	GLN

5.3.3 RNA ⓘ

There are no RNA molecules in this entry.

5.4 Non-standard residues in protein, DNA, RNA chains ⓘ

There are no non-standard protein/DNA/RNA residues in this entry.

5.5 Carbohydrates [i](#)

There are no monosaccharides in this entry.

5.6 Ligand geometry [i](#)

2 ligands are modelled in this entry.

In the following table, the Counts columns list the number of bonds (or angles) for which Mogul statistics could be retrieved, the number of bonds (or angles) that are observed in the model and the number of bonds (or angles) that are defined in the Chemical Component Dictionary. The Link column lists molecule types, if any, to which the group is linked. The Z score for a bond length (or angle) is the number of standard deviations the observed value is removed from the expected value. A bond length (or angle) with $|Z| > 2$ is considered an outlier worth inspection. RMSZ is the root-mean-square of all Z scores of the bond lengths (or angles).

Mol	Type	Chain	Res	Link	Bond lengths			Bond angles		
					Counts	RMSZ	# $ Z > 2$	Counts	RMSZ	# $ Z > 2$
4	CLR	A	502	-	31,31,31	2.14	6 (19%)	48,48,48	1.79	13 (27%)
3	1IB	A	501	-	23,25,25	2.36	3 (13%)	28,36,36	1.37	4 (14%)

In the following table, the Chirals column lists the number of chiral outliers, the number of chiral centers analysed, the number of these observed in the model and the number defined in the Chemical Component Dictionary. Similar counts are reported in the Torsion and Rings columns. '-' means no outliers of that kind were identified.

Mol	Type	Chain	Res	Link	Chirals	Torsions	Rings
4	CLR	A	502	-	-	8/10/68/68	0/4/4/4
3	1IB	A	501	-	-	2/15/34/34	0/3/3/3

All (9) bond length outliers are listed below:

Mol	Chain	Res	Type	Atoms	Z	Observed(Å)	Ideal(Å)
3	A	501	1IB	CAF-CAJ	-7.25	1.40	1.51
3	A	501	1IB	CAP-CAS	-6.69	1.40	1.51
4	A	502	CLR	C10-C5	-6.21	1.40	1.52
4	A	502	CLR	C4-C5	-5.57	1.39	1.51
4	A	502	CLR	C7-C6	-5.26	1.38	1.50
3	A	501	1IB	FAB-CAT	-4.32	1.24	1.35
4	A	502	CLR	C10-C9	-2.94	1.51	1.56
4	A	502	CLR	C6-C5	2.87	1.39	1.33
4	A	502	CLR	C13-C14	-2.62	1.50	1.55

All (17) bond angle outliers are listed below:

Mol	Chain	Res	Type	Atoms	Z	Observed(°)	Ideal(°)
4	A	502	CLR	C4-C5-C10	3.94	121.65	116.42
4	A	502	CLR	C13-C17-C20	-3.79	113.56	119.49
4	A	502	CLR	C15-C14-C8	-3.76	112.89	119.08
3	A	501	1IB	CAP-NAD-CAN	-3.72	107.77	113.18
4	A	502	CLR	C15-C14-C13	-3.59	99.52	103.84
4	A	502	CLR	C16-C17-C20	-3.17	107.23	112.15
4	A	502	CLR	C11-C9-C10	-3.10	109.00	113.08
4	A	502	CLR	C4-C5-C6	-2.99	116.30	120.61
3	A	501	1IB	CAR-CAO-NAD	-2.79	100.67	103.92
4	A	502	CLR	C13-C14-C8	-2.69	110.40	114.38
3	A	501	1IB	CAL-CAT-CAS	-2.68	120.46	123.98
4	A	502	CLR	C16-C17-C13	-2.48	100.85	103.84
4	A	502	CLR	C14-C8-C9	-2.46	105.79	109.09
4	A	502	CLR	C7-C8-C14	-2.33	107.53	110.91
4	A	502	CLR	C23-C22-C20	-2.06	109.12	115.03
3	A	501	1IB	CAJ-CAL-CAT	2.04	121.35	119.28
4	A	502	CLR	C11-C9-C8	-2.03	108.83	111.75

There are no chirality outliers.

All (10) torsion outliers are listed below:

Mol	Chain	Res	Type	Atoms
4	A	502	CLR	C13-C17-C20-C21
4	A	502	CLR	C21-C20-C22-C23
4	A	502	CLR	C23-C24-C25-C26
4	A	502	CLR	C23-C24-C25-C27
4	A	502	CLR	C22-C23-C24-C25
4	A	502	CLR	C13-C17-C20-C22
3	A	501	1IB	CAW-CAV-NAE-CAK
4	A	502	CLR	C16-C17-C20-C21
4	A	502	CLR	C17-C20-C22-C23
3	A	501	1IB	CAH-CAG-CAK-NAE

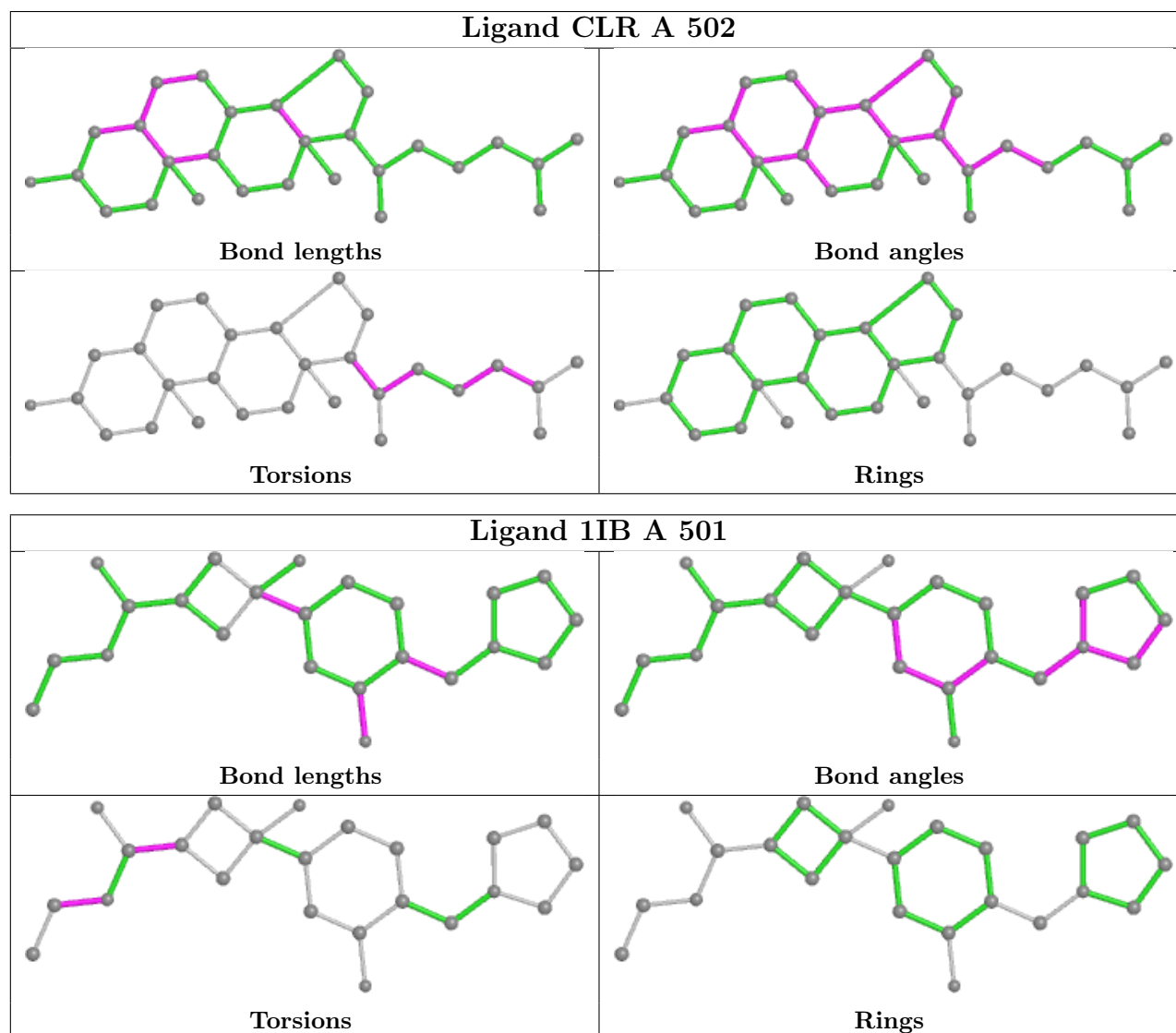
There are no ring outliers.

1 monomer is involved in 2 short contacts:

Mol	Chain	Res	Type	Clashes	Symm-Clashes
4	A	502	CLR	2	0

The following is a two-dimensional graphical depiction of Mogul quality analysis of bond lengths, bond angles, torsion angles, and ring geometry for all instances of the Ligand of Interest. In addition, ligands with molecular weight > 250 and outliers as shown on the validation Tables will

also be included. For torsion angles, if less than 5% of the Mogul distribution of torsion angles is within 10 degrees of the torsion angle in question, then that torsion angle is considered an outlier. Any bond that is central to one or more torsion angles identified as an outlier by Mogul will be highlighted in the graph. For rings, the root-mean-square deviation (RMSD) between the ring in question and similar rings identified by Mogul is calculated over all ring torsion angles. If the average RMSD is greater than 60 degrees and the minimal RMSD between the ring in question and any Mogul-identified rings is also greater than 60 degrees, then that ring is considered an outlier. The outliers are highlighted in purple. The color gray indicates Mogul did not find sufficient equivalents in the CSD to analyse the geometry.



5.7 Other polymers [i](#)

There are no such residues in this entry.

5.8 Polymer linkage issues ⓘ

There are no chain breaks in this entry.

6 Fit of model and data [i](#)

6.1 Protein, DNA and RNA chains [i](#)

In the following table, the column labelled ‘#RSRZ> 2’ contains the number (and percentage) of RSRZ outliers, followed by percent RSRZ outliers for the chain as percentile scores relative to all X-ray entries and entries of similar resolution. The OWAB column contains the minimum, median, 95th percentile and maximum values of the occupancy-weighted average B-factor per residue. The column labelled ‘Q< 0.9’ lists the number of (and percentage) of residues with an average occupancy less than 0.9.

Mol	Chain	Analysed	<RSRZ>	#RSRZ>2	OWAB(Å ²)	Q<0.9
1	A	301/407 (73%)	-0.34	4 (1%) 77 73	24, 37, 62, 87	0
2	B	106/147 (72%)	-0.14	3 (2%) 53 46	39, 56, 79, 89	0
All	All	407/554 (73%)	-0.29	7 (1%) 70 66	24, 40, 73, 89	0

All (7) RSRZ outliers are listed below:

Mol	Chain	Res	Type	RSRZ
1	A	197	TYR	5.4
1	A	234	ASP	3.1
2	B	21	ASP	3.0
1	A	235	GLY	2.7
2	B	54	ASP	2.6
1	A	383	ALA	2.2
2	B	1	ALA	2.1

6.2 Non-standard residues in protein, DNA, RNA chains [i](#)

There are no non-standard protein/DNA/RNA residues in this entry.

6.3 Carbohydrates [i](#)

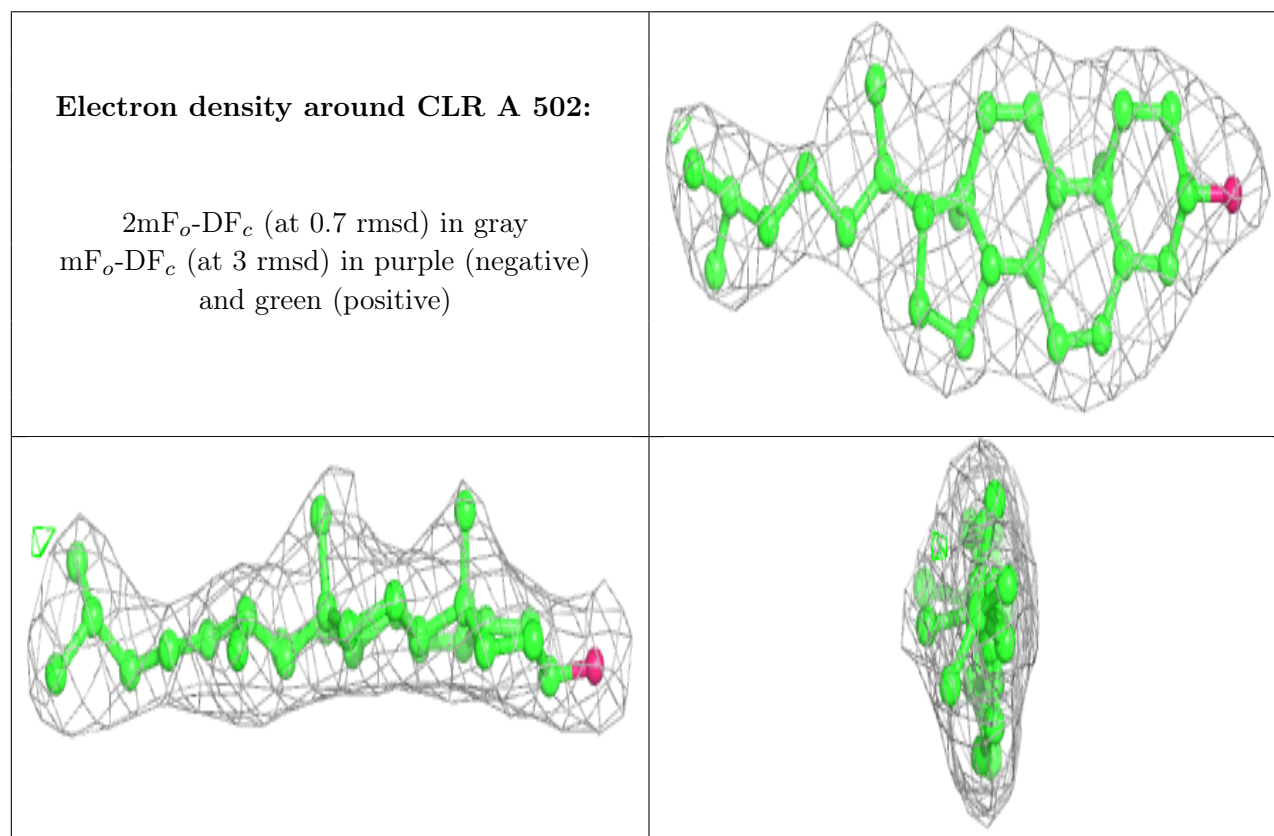
There are no monosaccharides in this entry.

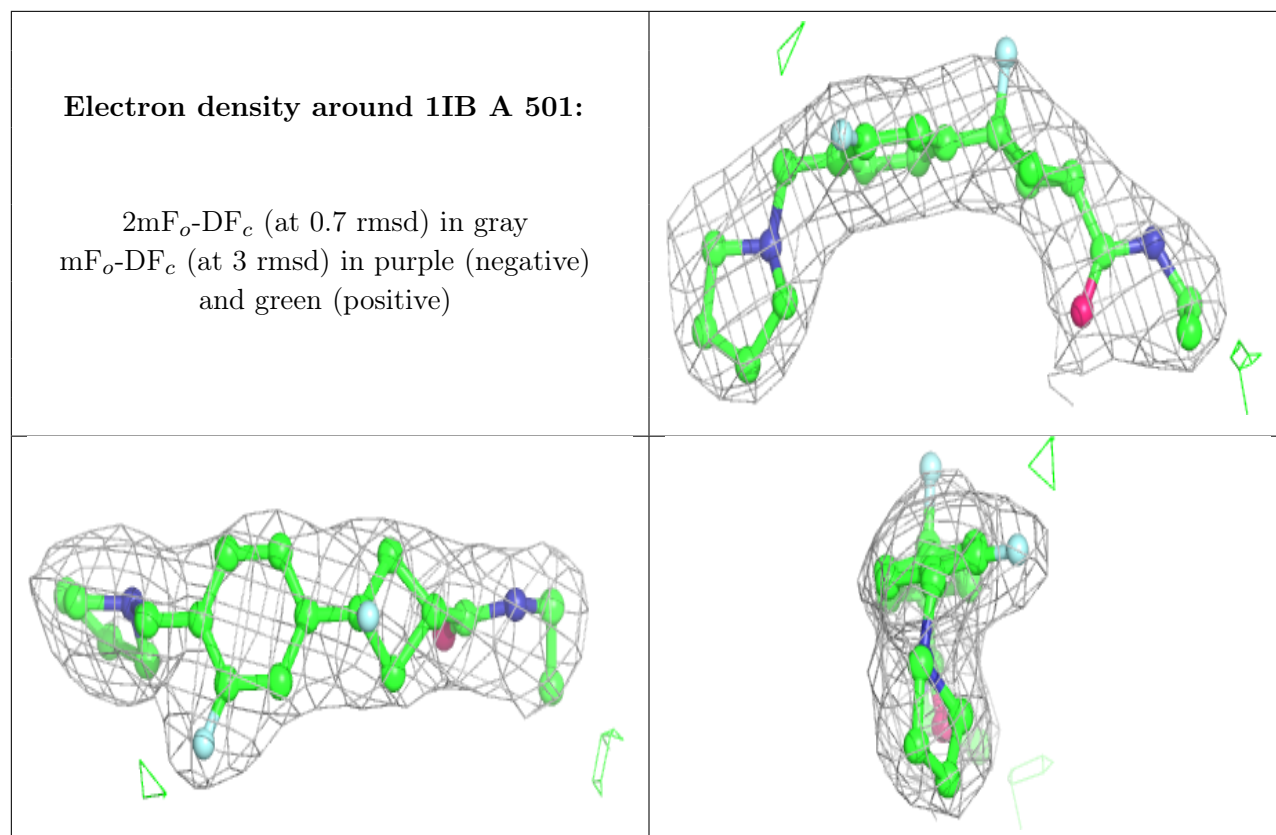
6.4 Ligands [i](#)

In the following table, the Atoms column lists the number of modelled atoms in the group and the number defined in the chemical component dictionary. The B-factors column lists the minimum, median, 95th percentile and maximum values of B factors of atoms in the group. The column labelled ‘Q< 0.9’ lists the number of atoms with occupancy less than 0.9.

Mol	Type	Chain	Res	Atoms	RSCC	RSR	B-factors(\AA^2)	Q<0.9
4	CLR	A	502	28/28	0.93	0.15	31,32,39,42	0
3	1IB	A	501	23/23	0.95	0.27	37,44,51,67	0

The following is a graphical depiction of the model fit to experimental electron density of all instances of the Ligand of Interest. In addition, ligands with molecular weight > 250 and outliers as shown on the geometry validation Tables will also be included. Each fit is shown from different orientation to approximate a three-dimensional view.





6.5 Other polymers [i](#)

There are no such residues in this entry.