



# Full wwPDB X-ray Structure Validation Report ⓘ

May 26, 2020 – 05:13 pm BST

PDB ID : 5F92  
Title : Fumarate hydratase of Mycobacterium tuberculosis in complex with formate  
Authors : Kasbekar, M.; Fischer, G.; Mott, B.T.; Yasgar, A.; Hyvonen, M.; Boshoff, H.I.;  
Abell, C.; Barry, C.E.; Thomas, C.J.  
Deposited on : 2015-12-09  
Resolution : 1.86 Å(reported)

This is a Full wwPDB X-ray Structure Validation Report for a publicly released PDB entry.

We welcome your comments at [validation@mail.wwpdb.org](mailto:validation@mail.wwpdb.org)

A user guide is available at

<https://www.wwpdb.org/validation/2017/XrayValidationReportHelp>

with specific help available everywhere you see the ⓘ symbol.

---

The following versions of software and data (see [references ⓘ](#)) were used in the production of this report:

MolProbity : 4.02b-467  
Mogul : 1.8.5 (274361), CSD as541be (2020)  
Xtriage (Phenix) : 1.13  
EDS : 2.11  
Percentile statistics : 20191225.v01 (using entries in the PDB archive December 25th 2019)  
Refmac : 5.8.0158  
CCP4 : 7.0.044 (Gargrove)  
Ideal geometry (proteins) : Engh & Huber (2001)  
Ideal geometry (DNA, RNA) : Parkinson et al. (1996)  
Validation Pipeline (wwPDB-VP) : 2.11

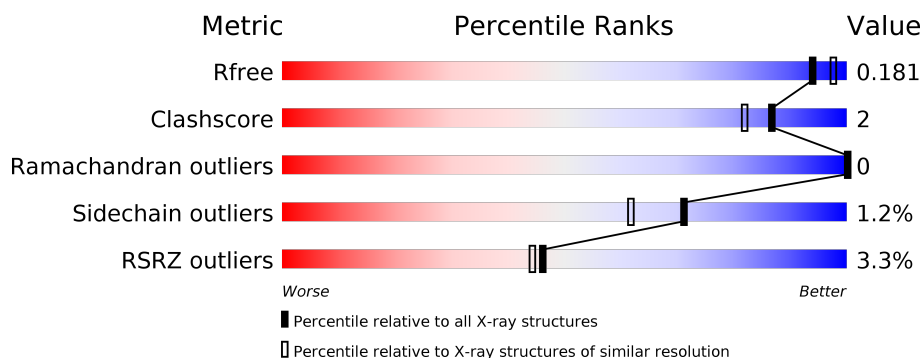
# 1 Overall quality at a glance

The following experimental techniques were used to determine the structure:

## *X-RAY DIFFRACTION*

The reported resolution of this entry is 1.86 Å.

Percentile scores (ranging between 0-100) for global validation metrics of the entry are shown in the following graphic. The table shows the number of entries on which the scores are based.



Metric	Whole archive (#Entries)	Similar resolution (#Entries, resolution range(Å))
$R_{free}$	130704	2469 (1.86-1.86)
Clashscore	141614	2625 (1.86-1.86)
Ramachandran outliers	138981	2592 (1.86-1.86)
Sidechain outliers	138945	2592 (1.86-1.86)
RSRZ outliers	127900	2436 (1.86-1.86)

The table below summarises the geometric issues observed across the polymeric chains and their fit to the electron density. The red, orange, yellow and green segments on the lower bar indicate the fraction of residues that contain outliers for  $\geq 3$ , 2, 1 and 0 types of geometric quality criteria respectively. A grey segment represents the fraction of residues that are not modelled. The numeric value for each fraction is indicated below the corresponding segment, with a dot representing fractions  $\leq 5\%$ . The upper red bar (where present) indicates the fraction of residues that have poor fit to the electron density. The numeric value is given above the bar.

Mol	Chain	Length	Quality of chain
1	A	495	<div> <div>4%</div> <div> <div></div> <div>88%</div> <div>5%</div> <div>7%</div> </div> </div>
1	B	495	<div> <div>5%</div> <div> <div></div> <div>88%</div> <div>•</div> <div>7%</div> </div> </div>
1	C	495	<div> <div>%</div> <div> <div></div> <div>88%</div> <div>•</div> <div>8%</div> </div> </div>
1	D	495	<div> <div>2%</div> <div> <div></div> <div>86%</div> <div>5%</div> <div>8%</div> </div> </div>

## 2 Entry composition

There are 5 unique types of molecules in this entry. The entry contains 15314 atoms, of which 0 are hydrogens and 0 are deuteriums.

In the tables below, the ZeroOcc column contains the number of atoms modelled with zero occupancy, the AltConf column contains the number of residues with at least one atom in alternate conformation and the Trace column contains the number of residues modelled with at most 2 atoms.

- Molecule 1 is a protein called Fumarate hydratase class II.

Mol	Chain	Residues	Atoms					ZeroOcc	AltConf	Trace
1	A	460	Total	C	N	O	S	36	3	0
			3425	2134	624	656	11			
1	B	461	Total	C	N	O	S	58	3	0
			3434	2137	625	660	12			
1	C	454	Total	C	N	O	S	35	4	0
			3409	2121	626	651	11			
1	D	455	Total	C	N	O	S	46	4	0
			3425	2131	627	656	11			

There are 88 discrepancies between the modelled and reference sequences:

Chain	Residue	Modelled	Actual	Comment	Reference
A	-20	MET	-	initiating methionine	UNP P9WN92
A	-19	HIS	-	expression tag	UNP P9WN92
A	-18	HIS	-	expression tag	UNP P9WN92
A	-17	HIS	-	expression tag	UNP P9WN92
A	-16	HIS	-	expression tag	UNP P9WN92
A	-15	HIS	-	expression tag	UNP P9WN92
A	-14	HIS	-	expression tag	UNP P9WN92
A	-13	SER	-	expression tag	UNP P9WN92
A	-12	SER	-	expression tag	UNP P9WN92
A	-11	GLY	-	expression tag	UNP P9WN92
A	-10	VAL	-	expression tag	UNP P9WN92
A	-9	ASP	-	expression tag	UNP P9WN92
A	-8	LEU	-	expression tag	UNP P9WN92
A	-7	GLY	-	expression tag	UNP P9WN92
A	-6	THR	-	expression tag	UNP P9WN92
A	-5	GLU	-	expression tag	UNP P9WN92
A	-4	ASN	-	expression tag	UNP P9WN92
A	-3	LEU	-	expression tag	UNP P9WN92
A	-2	TYR	-	expression tag	UNP P9WN92
A	-1	PHE	-	expression tag	UNP P9WN92
A	0	GLN	-	expression tag	UNP P9WN92

*Continued on next page...*

*Continued from previous page...*

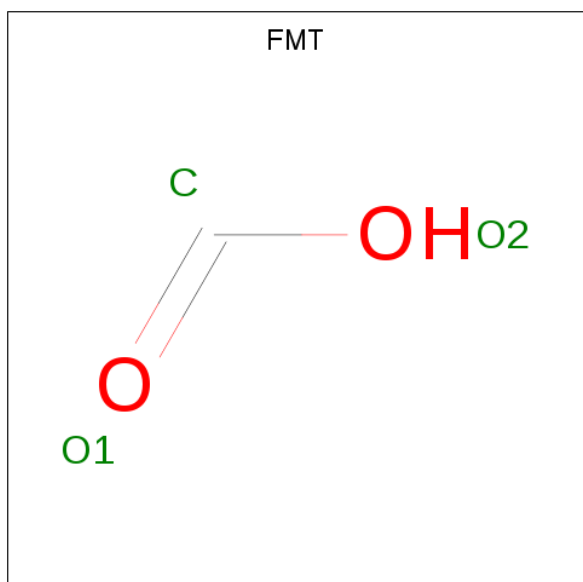
Chain	Residue	Modelled	Actual	Comment	Reference
A	1	SER	-	expression tag	UNP P9WN92
B	-20	MET	-	initiating methionine	UNP P9WN92
B	-19	HIS	-	expression tag	UNP P9WN92
B	-18	HIS	-	expression tag	UNP P9WN92
B	-17	HIS	-	expression tag	UNP P9WN92
B	-16	HIS	-	expression tag	UNP P9WN92
B	-15	HIS	-	expression tag	UNP P9WN92
B	-14	HIS	-	expression tag	UNP P9WN92
B	-13	SER	-	expression tag	UNP P9WN92
B	-12	SER	-	expression tag	UNP P9WN92
B	-11	GLY	-	expression tag	UNP P9WN92
B	-10	VAL	-	expression tag	UNP P9WN92
B	-9	ASP	-	expression tag	UNP P9WN92
B	-8	LEU	-	expression tag	UNP P9WN92
B	-7	GLY	-	expression tag	UNP P9WN92
B	-6	THR	-	expression tag	UNP P9WN92
B	-5	GLU	-	expression tag	UNP P9WN92
B	-4	ASN	-	expression tag	UNP P9WN92
B	-3	LEU	-	expression tag	UNP P9WN92
B	-2	TYR	-	expression tag	UNP P9WN92
B	-1	PHE	-	expression tag	UNP P9WN92
B	0	GLN	-	expression tag	UNP P9WN92
B	1	SER	-	expression tag	UNP P9WN92
C	-20	MET	-	initiating methionine	UNP P9WN92
C	-19	HIS	-	expression tag	UNP P9WN92
C	-18	HIS	-	expression tag	UNP P9WN92
C	-17	HIS	-	expression tag	UNP P9WN92
C	-16	HIS	-	expression tag	UNP P9WN92
C	-15	HIS	-	expression tag	UNP P9WN92
C	-14	HIS	-	expression tag	UNP P9WN92
C	-13	SER	-	expression tag	UNP P9WN92
C	-12	SER	-	expression tag	UNP P9WN92
C	-11	GLY	-	expression tag	UNP P9WN92
C	-10	VAL	-	expression tag	UNP P9WN92
C	-9	ASP	-	expression tag	UNP P9WN92
C	-8	LEU	-	expression tag	UNP P9WN92
C	-7	GLY	-	expression tag	UNP P9WN92
C	-6	THR	-	expression tag	UNP P9WN92
C	-5	GLU	-	expression tag	UNP P9WN92
C	-4	ASN	-	expression tag	UNP P9WN92
C	-3	LEU	-	expression tag	UNP P9WN92
C	-2	TYR	-	expression tag	UNP P9WN92

*Continued on next page...*

Continued from previous page...

Chain	Residue	Modelled	Actual	Comment	Reference
C	-1	PHE	-	expression tag	UNP P9WN92
C	0	GLN	-	expression tag	UNP P9WN92
C	1	SER	-	expression tag	UNP P9WN92
D	-20	MET	-	initiating methionine	UNP P9WN92
D	-19	HIS	-	expression tag	UNP P9WN92
D	-18	HIS	-	expression tag	UNP P9WN92
D	-17	HIS	-	expression tag	UNP P9WN92
D	-16	HIS	-	expression tag	UNP P9WN92
D	-15	HIS	-	expression tag	UNP P9WN92
D	-14	HIS	-	expression tag	UNP P9WN92
D	-13	SER	-	expression tag	UNP P9WN92
D	-12	SER	-	expression tag	UNP P9WN92
D	-11	GLY	-	expression tag	UNP P9WN92
D	-10	VAL	-	expression tag	UNP P9WN92
D	-9	ASP	-	expression tag	UNP P9WN92
D	-8	LEU	-	expression tag	UNP P9WN92
D	-7	GLY	-	expression tag	UNP P9WN92
D	-6	THR	-	expression tag	UNP P9WN92
D	-5	GLU	-	expression tag	UNP P9WN92
D	-4	ASN	-	expression tag	UNP P9WN92
D	-3	LEU	-	expression tag	UNP P9WN92
D	-2	TYR	-	expression tag	UNP P9WN92
D	-1	PHE	-	expression tag	UNP P9WN92
D	0	GLN	-	expression tag	UNP P9WN92
D	1	SER	-	expression tag	UNP P9WN92

- Molecule 2 is FORMIC ACID (three-letter code: FMT) (formula: CH<sub>2</sub>O<sub>2</sub>).

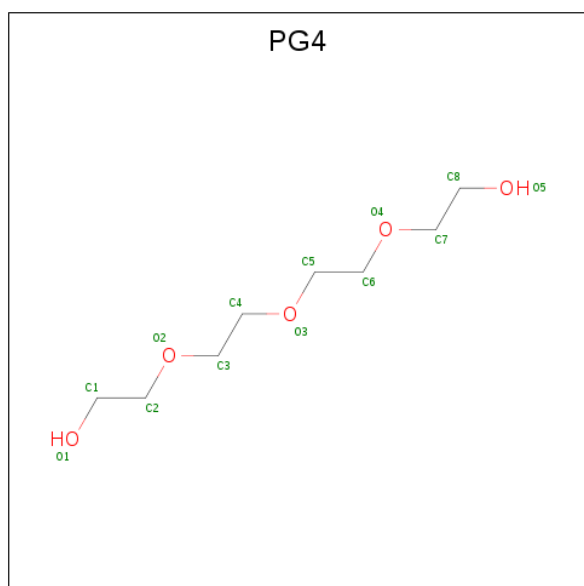


Mol	Chain	Residues	Atoms	ZeroOcc	AltConf
2	A	1	Total C O 3 1 2	0	0
2	A	1	Total C O 3 1 2	0	0
2	B	1	Total C O 3 1 2	0	0
2	B	1	Total C O 3 1 2	0	0

- Molecule 3 is CHLORIDE ION (three-letter code: CL) (formula: Cl).

Mol	Chain	Residues	Atoms	ZeroOcc	AltConf
3	A	1	Total Cl 1 1	0	0
3	D	1	Total Cl 1 1	0	0

- Molecule 4 is TETRAETHYLENE GLYCOL (three-letter code: PG4) (formula: C<sub>8</sub>H<sub>18</sub>O<sub>5</sub>).



Mol	Chain	Residues	Atoms	ZeroOcc	AltConf
4	A	1	Total C O 13 8 5	0	0

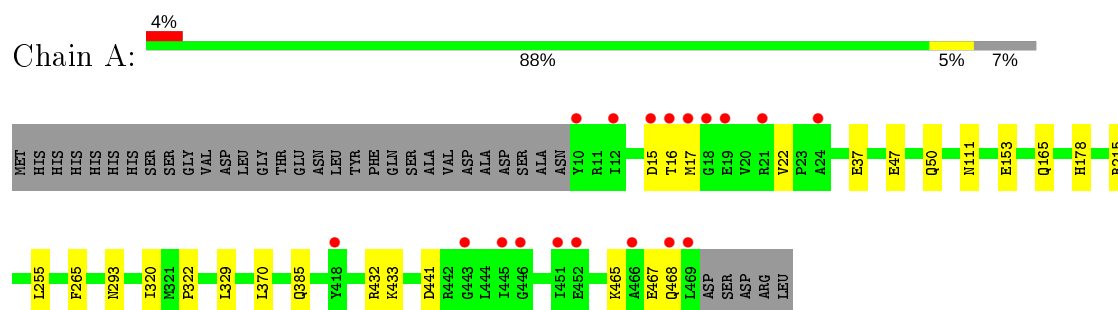
- Molecule 5 is water.

Mol	Chain	Residues	Atoms		ZeroOcc	AltConf
5	A	434	Total 434	O 434	0	0
5	B	404	Total 404	O 404	0	0
5	C	376	Total 376	O 376	0	0
5	D	380	Total 380	O 380	0	0

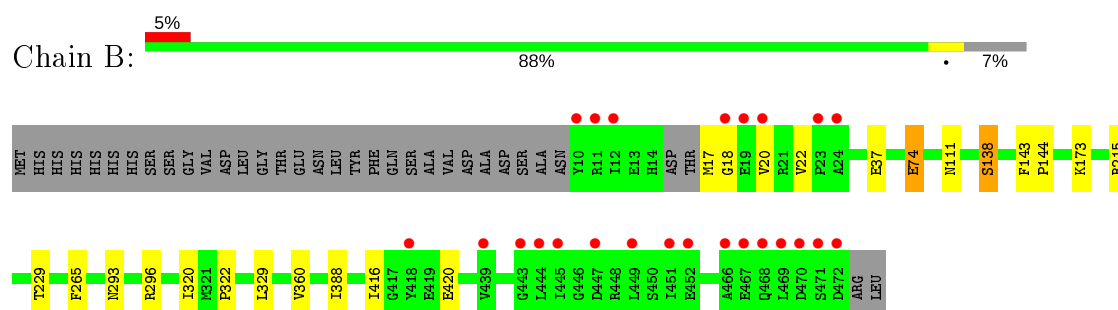
### 3 Residue-property plots [i](#)

These plots are drawn for all protein, RNA and DNA chains in the entry. The first graphic for a chain summarises the proportions of the various outlier classes displayed in the second graphic. The second graphic shows the sequence view annotated by issues in geometry and electron density. Residues are color-coded according to the number of geometric quality criteria for which they contain at least one outlier: green = 0, yellow = 1, orange = 2 and red = 3 or more. A red dot above a residue indicates a poor fit to the electron density ( $RSRZ > 2$ ). Stretches of 2 or more consecutive residues without any outlier are shown as a green connector. Residues present in the sample, but not in the model, are shown in grey.

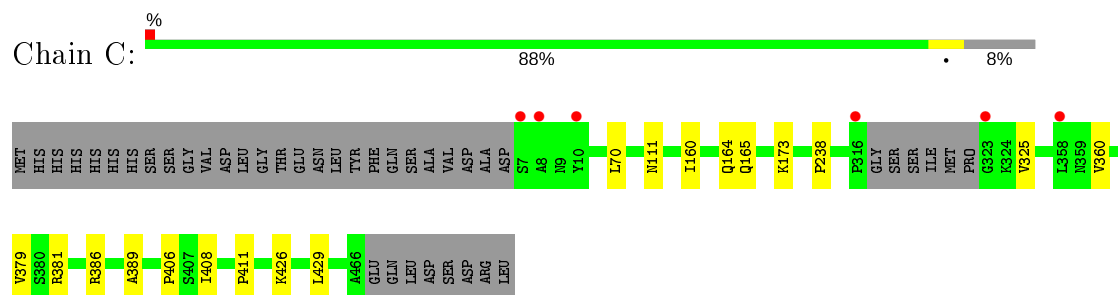
#### • Molecule 1: Fumarate hydratase class II



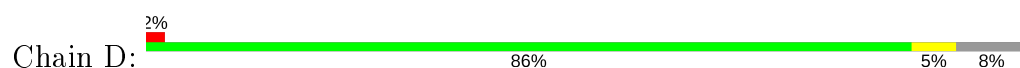
#### • Molecule 1: Fumarate hydratase class II



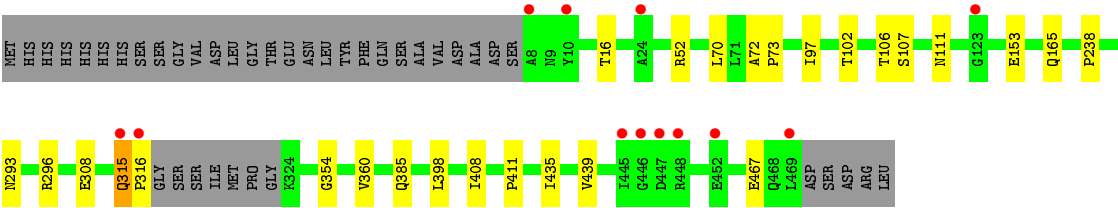
#### • Molecule 1: Fumarate hydratase class II



#### • Molecule 1: Fumarate hydratase class II







## 4 Data and refinement statistics

Property	Value	Source
Space group	C 1 2 1	Depositor
Cell constants a, b, c, $\alpha$ , $\beta$ , $\gamma$	180.14Å 96.99Å 124.13Å 90.00° 103.38° 90.00°	Depositor
Resolution (Å)	40.28 – 1.86 42.43 – 1.86	Depositor EDS
% Data completeness (in resolution range)	99.4 (40.28-1.86) 99.4 (42.43-1.86)	Depositor EDS
$R_{merge}$	0.06	Depositor
$R_{sym}$	0.05	Depositor
$\langle I/\sigma(I) \rangle$ <sup>1</sup>	2.25 (at 1.86Å)	Xtriage
Refinement program	PHENIX 1.9_1692	Depositor
R, $R_{free}$	0.143 , 0.181 0.145 , 0.181	Depositor DCC
$R_{free}$ test set	8681 reflections (5.01%)	wwPDB-VP
Wilson B-factor (Å <sup>2</sup> )	23.2	Xtriage
Anisotropy	0.195	Xtriage
Bulk solvent $k_{sol}$ (e/Å <sup>3</sup> ), $B_{sol}$ (Å <sup>2</sup> )	0.34 , 50.8	EDS
L-test for twinning <sup>2</sup>	$\langle  L  \rangle = 0.48$ , $\langle L^2 \rangle = 0.31$	Xtriage
Estimated twinning fraction	No twinning to report.	Xtriage
$F_o, F_c$ correlation	0.97	EDS
Total number of atoms	15314	wwPDB-VP
Average B, all atoms (Å <sup>2</sup> )	27.0	wwPDB-VP

Xtriage's analysis on translational NCS is as follows: *The largest off-origin peak in the Patterson function is 5.32% of the height of the origin peak. No significant pseudotranslation is detected.*

<sup>1</sup>Intensities estimated from amplitudes.

<sup>2</sup>Theoretical values of  $\langle |L| \rangle$ ,  $\langle L^2 \rangle$  for acentric reflections are 0.5, 0.333 respectively for untwinned datasets, and 0.375, 0.2 for perfectly twinned datasets.

## 5 Model quality [i](#)

### 5.1 Standard geometry [i](#)

Bond lengths and bond angles in the following residue types are not validated in this section: FMT, PG4, CL

The Z score for a bond length (or angle) is the number of standard deviations the observed value is removed from the expected value. A bond length (or angle) with  $|Z| > 5$  is considered an outlier worth inspection. RMSZ is the root-mean-square of all Z scores of the bond lengths (or angles).

Mol	Chain	Bond lengths		Bond angles	
		RMSZ	$\# Z  > 5$	RMSZ	$\# Z  > 5$
1	A	0.51	0/3476	0.58	0/4725
1	B	0.50	0/3484	0.57	0/4733
1	C	0.48	0/3462	0.58	0/4702
1	D	0.51	0/3475	0.60	0/4721
All	All	0.50	0/13897	0.58	0/18881

There are no bond length outliers.

There are no bond angle outliers.

There are no chirality outliers.

There are no planarity outliers.

### 5.2 Too-close contacts [i](#)

In the following table, the Non-H and H(model) columns list the number of non-hydrogen atoms and hydrogen atoms in the chain respectively. The H(added) column lists the number of hydrogen atoms added and optimized by MolProbity. The Clashes column lists the number of clashes within the asymmetric unit, whereas Symm-Clashes lists symmetry related clashes.

Mol	Chain	Non-H	H(model)	H(added)	Clashes	Symm-Clashes
1	A	3425	0	3458	17	0
1	B	3434	0	3462	15	0
1	C	3409	0	3455	10	0
1	D	3425	0	3464	16	0
2	A	6	0	2	1	0
2	B	6	0	2	0	0
3	A	1	0	0	0	0
3	D	1	0	0	0	0
4	A	13	0	18	0	0

*Continued on next page...*

*Continued from previous page...*

Mol	Chain	Non-H	H(model)	H(added)	Clashes	Symm-Clashes
5	A	434	0	0	6	0
5	B	404	0	0	7	0
5	C	376	0	0	2	0
5	D	380	0	0	2	0
All	All	15314	0	13861	57	0

The all-atom clashscore is defined as the number of clashes found per 1000 atoms (including hydrogen atoms). The all-atom clashscore for this structure is 2.

All (57) close contacts within the same asymmetric unit are listed below, sorted by their clash magnitude.

Atom-1	Atom-2	Interatomic distance (Å)	Clash overlap (Å)
1:C:165:GLN:OE1	1:C:381[A]:ARG:NH1	2.01	0.93
1:A:385:GLN:OE1	5:A:601:HOH:O	2.08	0.70
1:C:406:PRO:HG3	1:C:429:LEU:HD21	1.75	0.69
1:C:381[B]:ARG:NH1	5:C:502:HOH:O	2.25	0.68
1:A:37:GLU:OE2	5:A:602:HOH:O	2.14	0.66
2:A:501:FMT:H	2:A:502:FMT:H	1.79	0.62
1:A:50:GLN:HG2	1:A:370:LEU:CD1	2.31	0.61
1:A:178:HIS:NE2	1:A:467:GLU:O	2.32	0.57
1:A:47:GLU:HG3	5:A:930:HOH:O	2.07	0.55
1:C:160:ILE:O	1:C:164[B]:GLN:HG3	2.07	0.55
1:D:165:GLN:HE22	1:D:385:GLN:NE2	2.06	0.54
1:A:215[A]:ARG:NH2	5:A:603:HOH:O	2.17	0.53
1:C:360:VAL:HG22	5:C:631:HOH:O	2.08	0.53
1:B:37:GLU:O	1:C:386:ARG:NH2	2.42	0.53
1:B:293[B]:ASN:ND2	1:B:296:ARG:HE	2.06	0.53
1:D:360:VAL:HG22	5:D:728:HOH:O	2.08	0.53
1:D:293[B]:ASN:ND2	1:D:296:ARG:HE	2.08	0.52
1:B:360:VAL:HG22	5:B:828:HOH:O	2.10	0.51
1:A:50:GLN:HG2	1:A:370:LEU:HD13	1.91	0.50
1:B:215[B]:ARG:NH2	5:B:602:HOH:O	2.27	0.49
1:A:153:GLU:HB2	1:A:255:LEU:HD11	1.94	0.49
1:D:354:GLY:HA2	5:D:728:HOH:O	2.13	0.49
1:C:173:LYS:NZ	1:C:389:ALA:O	2.45	0.48
1:D:165:GLN:HE22	1:D:385:GLN:HE21	1.63	0.47
1:D:435:ILE:O	1:D:439:VAL:HG23	2.15	0.47
1:C:408:ILE:O	1:C:411:PRO:HD2	2.16	0.46
1:D:52[A]:ARG:NH1	1:D:153:GLU:OE1	2.49	0.46
1:A:215[A]:ARG:HD2	5:A:603:HOH:O	2.15	0.45
1:D:97:ILE:HD13	1:D:107:SER:HB3	1.97	0.45

*Continued on next page...*

*Continued from previous page...*

Atom-1	Atom-2	Interatomic distance (Å)	Clash overlap (Å)
1:B:74:GLU:H	1:B:74:GLU:CD	2.20	0.45
1:B:215[A]:ARG:HD2	5:B:601:HOH:O	2.16	0.45
1:C:426:LYS:NZ	1:D:16:THR:O	2.50	0.45
1:B:265[A]:PHE:HD2	5:B:845:HOH:O	2.00	0.44
1:D:408:ILE:O	1:D:411:PRO:HD2	2.18	0.44
1:B:74:GLU:HG3	5:B:991:HOH:O	2.16	0.44
1:D:102:THR:HG21	1:D:106:THR:HB	1.99	0.44
1:A:465:LYS:HE2	5:B:609:HOH:O	2.18	0.43
1:D:308:GLU:HB3	1:D:398:LEU:HD21	2.00	0.43
1:A:320:ILE:O	1:A:322:PRO:HD3	2.18	0.43
1:B:173:LYS:HE3	1:B:388:ILE:O	2.18	0.43
1:C:70:LEU:HD11	1:C:238:PRO:HG3	2.00	0.43
1:A:165:GLN:HE22	1:A:385:GLN:NE2	2.16	0.43
1:B:215[A]:ARG:NH1	5:B:601:HOH:O	2.20	0.43
1:A:15:ASP:O	1:A:17:MET:HA	2.18	0.43
1:A:16:THR:HA	1:A:17:MET:HA	1.64	0.43
1:A:433:LYS:NZ	1:A:441:ASP:OD2	2.39	0.42
1:B:138:SER:HB3	1:B:229:THR:HA	2.01	0.42
1:D:70:LEU:HD11	1:D:238:PRO:HG3	2.02	0.42
1:D:72:ALA:HA	1:D:73:PRO:HD3	1.91	0.41
1:A:432:ARG:HB2	1:A:432:ARG:HE	1.67	0.41
1:A:265[B]:PHE:HD2	5:A:860:HOH:O	2.02	0.41
1:B:143:PHE:N	1:B:144:PRO:HD2	2.36	0.41
1:B:416:ILE:HD12	1:B:420:GLU:HG3	2.03	0.41
1:B:17:MET:HG2	1:B:18:GLY:H	1.86	0.40
1:D:315:GLN:HA	1:D:316:PRO:HA	1.78	0.40
1:D:165:GLN:NE2	1:D:385:GLN:HE21	2.20	0.40
1:B:320:ILE:O	1:B:322:PRO:HD3	2.22	0.40

There are no symmetry-related clashes.

## 5.3 Torsion angles [i](#)

### 5.3.1 Protein backbone [i](#)

In the following table, the Percentiles column shows the percent Ramachandran outliers of the chain as a percentile score with respect to all X-ray entries followed by that with respect to entries of similar resolution.

The Analysed column shows the number of residues for which the backbone conformation was analysed, and the total number of residues.

Mol	Chain	Analysed	Favoured	Allowed	Outliers	Percentiles	
1	A	461/495 (93%)	452 (98%)	9 (2%)	0	100	100
1	B	460/495 (93%)	451 (98%)	9 (2%)	0	100	100
1	C	454/495 (92%)	437 (96%)	17 (4%)	0	100	100
1	D	455/495 (92%)	442 (97%)	13 (3%)	0	100	100
All	All	1830/1980 (92%)	1782 (97%)	48 (3%)	0	100	100

There are no Ramachandran outliers to report.

### 5.3.2 Protein sidechains ⓘ

In the following table, the Percentiles column shows the percent sidechain outliers of the chain as a percentile score with respect to all X-ray entries followed by that with respect to entries of similar resolution.

The Analysed column shows the number of residues for which the sidechain conformation was analysed, and the total number of residues.

Mol	Chain	Analysed	Rotameric	Outliers	Percentiles	
1	A	351/383 (92%)	345 (98%)	6 (2%)	60	47
1	B	353/383 (92%)	347 (98%)	6 (2%)	60	47
1	C	351/383 (92%)	348 (99%)	3 (1%)	78	72
1	D	353/383 (92%)	350 (99%)	3 (1%)	81	76
All	All	1408/1532 (92%)	1390 (99%)	18 (1%)	71	58

All (18) residues with a non-rotameric sidechain are listed below:

Mol	Chain	Res	Type
1	A	22	VAL
1	A	111	ASN
1	A	293[A]	ASN
1	A	293[B]	ASN
1	A	329	LEU
1	A	468	GLN
1	B	20	VAL
1	B	22	VAL
1	B	74	GLU
1	B	111	ASN
1	B	138	SER
1	B	329	LEU
1	C	111	ASN

*Continued on next page...*

*Continued from previous page...*

Mol	Chain	Res	Type
1	C	325	VAL
1	C	379	VAL
1	D	111	ASN
1	D	315	GLN
1	D	467	GLU

Some sidechains can be flipped to improve hydrogen bonding and reduce clashes. All (5) such sidechains are listed below:

Mol	Chain	Res	Type
1	A	385	GLN
1	C	178	HIS
1	C	252	GLN
1	D	130	ASN
1	D	165	GLN

### 5.3.3 RNA [i](#)

There are no RNA molecules in this entry.

## 5.4 Non-standard residues in protein, DNA, RNA chains [i](#)

There are no non-standard protein/DNA/RNA residues in this entry.

## 5.5 Carbohydrates [i](#)

There are no carbohydrates in this entry.

## 5.6 Ligand geometry [i](#)

Of 7 ligands modelled in this entry, 2 are monoatomic - leaving 5 for Mogul analysis.

In the following table, the Counts columns list the number of bonds (or angles) for which Mogul statistics could be retrieved, the number of bonds (or angles) that are observed in the model and the number of bonds (or angles) that are defined in the Chemical Component Dictionary. The Link column lists molecule types, if any, to which the group is linked. The Z score for a bond length (or angle) is the number of standard deviations the observed value is removed from the expected value. A bond length (or angle) with  $|Z| > 2$  is considered an outlier worth inspection. RMSZ is the root-mean-square of all Z scores of the bond lengths (or angles).

Mol	Type	Chain	Res	Link	Bond lengths			Bond angles		
					Counts	RMSZ	# Z  > 2	Counts	RMSZ	# Z  > 2
2	FMT	A	502	-	0,2,2	0.00	-	0,1,1	0.00	-
2	FMT	B	502	-	0,2,2	0.00	-	0,1,1	0.00	-
4	PG4	A	504	-	12,12,12	0.48	0	11,11,11	0.31	0
2	FMT	B	501	-	0,2,2	0.00	-	0,1,1	0.00	-
2	FMT	A	501	-	0,2,2	0.00	-	0,1,1	0.00	-

In the following table, the Chirals column lists the number of chiral outliers, the number of chiral centers analysed, the number of these observed in the model and the number defined in the Chemical Component Dictionary. Similar counts are reported in the Torsion and Rings columns. '-' means no outliers of that kind were identified.

Mol	Type	Chain	Res	Link	Chirals	Torsions	Rings
4	PG4	A	504	-	-	1/10/10/10	-

There are no bond length outliers.

There are no bond angle outliers.

There are no chirality outliers.

All (1) torsion outliers are listed below:

Mol	Chain	Res	Type	Atoms
4	A	504	PG4	C1-C2-O2-C3

There are no ring outliers.

2 monomers are involved in 1 short contact:

Mol	Chain	Res	Type	Clashes	Symm-Clashes
2	A	502	FMT	1	0
2	A	501	FMT	1	0

## 5.7 Other polymers [i](#)

There are no such residues in this entry.

## 5.8 Polymer linkage issues [i](#)

There are no chain breaks in this entry.



## 6 Fit of model and data ⓘ

### 6.1 Protein, DNA and RNA chains ⓘ

In the following table, the column labelled ‘#RSRZ> 2’ contains the number (and percentage) of RSRZ outliers, followed by percent RSRZ outliers for the chain as percentile scores relative to all X-ray entries and entries of similar resolution. The OWAB column contains the minimum, median, 95<sup>th</sup> percentile and maximum values of the occupancy-weighted average B-factor per residue. The column labelled ‘Q< 0.9’ lists the number of (and percentage) of residues with an average occupancy less than 0.9.

Mol	Chain	Analysed	<RSRZ>	#RSRZ>2		OWAB(Å <sup>2</sup> )	Q<0.9
1	A	460/495 (92%)	-0.38	18 (3%)	39 38	13, 22, 50, 98	8 (1%)
1	B	461/495 (93%)	-0.20	24 (5%)	27 26	13, 23, 55, 82	13 (2%)
1	C	454/495 (91%)	-0.38	6 (1%)	77 78	13, 24, 44, 74	9 (1%)
1	D	455/495 (91%)	-0.34	12 (2%)	56 54	13, 23, 44, 78	10 (2%)
All	All	1830/1980 (92%)	-0.32	60 (3%)	46 44	13, 23, 50, 98	40 (2%)

All (60) RSRZ outliers are listed below:

Mol	Chain	Res	Type	RSRZ
1	B	469	LEU	7.3
1	D	8	ALA	6.7
1	B	471	SER	6.5
1	C	7	SER	6.4
1	A	469	LEU	6.4
1	A	12	ILE	5.7
1	C	8	ALA	5.4
1	D	316	PRO	5.0
1	A	16	THR	4.8
1	C	10	TYR	4.7
1	B	12	ILE	4.4
1	D	469	LEU	4.2
1	B	418	TYR	4.2
1	A	24	ALA	4.1
1	A	17	MET	4.0
1	A	15	ASP	3.9
1	D	10	TYR	3.9
1	B	444	LEU	3.8
1	B	19	GLU	3.8
1	B	24	ALA	3.7
1	B	470	ASP	3.6

*Continued on next page...*

*Continued from previous page...*

Mol	Chain	Res	Type	RSRZ
1	A	18	GLY	3.4
1	B	472	ASP	3.4
1	C	316	PRO	3.3
1	B	18	GLY	3.2
1	A	10	TYR	3.1
1	A	19	GLU	3.0
1	B	468	GLN	3.0
1	B	11	ARG	3.0
1	B	443	GLY	3.0
1	A	446	GLY	2.9
1	C	323	GLY	2.9
1	B	447	ASP	2.9
1	B	20	VAL	2.9
1	B	466	ALA	2.6
1	A	451	ILE	2.6
1	B	451	ILE	2.6
1	B	23	PRO	2.5
1	D	448	ARG	2.4
1	B	10	TYR	2.4
1	A	468	GLN	2.4
1	B	445	ILE	2.3
1	B	467	GLU	2.3
1	A	418	TYR	2.3
1	A	445	ILE	2.3
1	A	466	ALA	2.3
1	D	123	GLY	2.2
1	A	443	GLY	2.2
1	D	445	ILE	2.2
1	D	315	GLN	2.2
1	D	447	ASP	2.2
1	C	358	LEU	2.2
1	D	446	GLY	2.1
1	D	24	ALA	2.1
1	B	439	VAL	2.1
1	A	21	ARG	2.1
1	D	452	GLU	2.1
1	B	452	GLU	2.1
1	B	449	LEU	2.0
1	A	452	GLU	2.0

## 6.2 Non-standard residues in protein, DNA, RNA chains [i](#)

There are no non-standard protein/DNA/RNA residues in this entry.

## 6.3 Carbohydrates [i](#)

There are no carbohydrates in this entry.

## 6.4 Ligands [i](#)

In the following table, the Atoms column lists the number of modelled atoms in the group and the number defined in the chemical component dictionary. The B-factors column lists the minimum, median, 95<sup>th</sup> percentile and maximum values of B factors of atoms in the group. The column labelled 'Q< 0.9' lists the number of atoms with occupancy less than 0.9.

Mol	Type	Chain	Res	Atoms	RSCC	RSR	B-factors( $\text{\AA}^2$ )	Q<0.9
3	CL	D	501	1/1	0.86	0.15	70,70,70,70	0
2	FMT	B	502	3/3	0.91	0.23	24,24,27,34	0
3	CL	A	503	1/1	0.91	0.13	61,61,61,61	0
4	PG4	A	504	13/13	0.93	0.15	46,52,58,58	0
2	FMT	A	502	3/3	0.94	0.14	21,21,29,41	0
2	FMT	A	501	3/3	0.98	0.08	18,18,22,22	0
2	FMT	B	501	3/3	0.99	0.13	19,19,21,23	0

## 6.5 Other polymers [i](#)

There are no such residues in this entry.