



Full wwPDB X-ray Structure Validation Report ⓘ

May 21, 2020 – 07:58 am BST

PDB ID : 5FBU
Title : Crystal structure of rifampin phosphotransferase RPH-Lm from *Listeria monocytogenes* in complex with rifampin-phosphate
Authors : Stogios, P.J.; Wawrzak, Z.; Skarina, T.; Yim, V.; Savchenko, A.; Anderson, W.F.; Center for Structural Genomics of Infectious Diseases (CSGID)
Deposited on : 2015-12-14
Resolution : 2.85 Å(reported)

This is a Full wwPDB X-ray Structure Validation Report for a publicly released PDB entry.

We welcome your comments at validation@mail.wwpdb.org

A user guide is available at

<https://www.wwpdb.org/validation/2017/XrayValidationReportHelp>

with specific help available everywhere you see the ⓘ symbol.

The following versions of software and data (see [references ⓘ](#)) were used in the production of this report:

MolProbity	:	4.02b-467
Mogul	:	1.8.5 (274361), CSD as541be (2020)
Xtriage (Phenix)	:	1.13
EDS	:	2.11
buster-report	:	1.1.7 (2018)
Percentile statistics	:	20191225.v01 (using entries in the PDB archive December 25th 2019)
Refmac	:	5.8.0158
CCP4	:	7.0.044 (Gargrove)
Ideal geometry (proteins)	:	Engh & Huber (2001)
Ideal geometry (DNA, RNA)	:	Parkinson et al. (1996)
Validation Pipeline (wwPDB-VP)	:	2.11

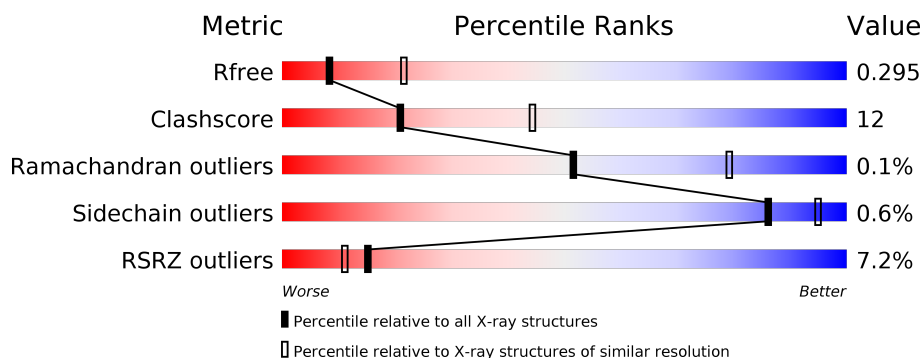
1 Overall quality at a glance

The following experimental techniques were used to determine the structure:

X-RAY DIFFRACTION

The reported resolution of this entry is 2.85 Å.

Percentile scores (ranging between 0-100) for global validation metrics of the entry are shown in the following graphic. The table shows the number of entries on which the scores are based.



Metric	Whole archive (#Entries)	Similar resolution (#Entries, resolution range(Å))
R_{free}	130704	3168 (2.90-2.82)
Clashscore	141614	3438 (2.90-2.82)
Ramachandran outliers	138981	3348 (2.90-2.82)
Sidechain outliers	138945	3351 (2.90-2.82)
RSRZ outliers	127900	3103 (2.90-2.82)

The table below summarises the geometric issues observed across the polymeric chains and their fit to the electron density. The red, orange, yellow and green segments on the lower bar indicate the fraction of residues that contain outliers for ≥ 3 , 2, 1 and 0 types of geometric quality criteria respectively. A grey segment represents the fraction of residues that are not modelled. The numeric value for each fraction is indicated below the corresponding segment, with a dot representing fractions $\leq 5\%$. The upper red bar (where present) indicates the fraction of residues that have poor fit to the electron density. The numeric value is given above the bar.

Mol	Chain	Length	Quality of chain
1	A	867	<div> <div>6%</div> <div> <div></div> <div>70%</div> <div>14%</div> <div>15%</div> </div> </div>

2 Entry composition [i](#)

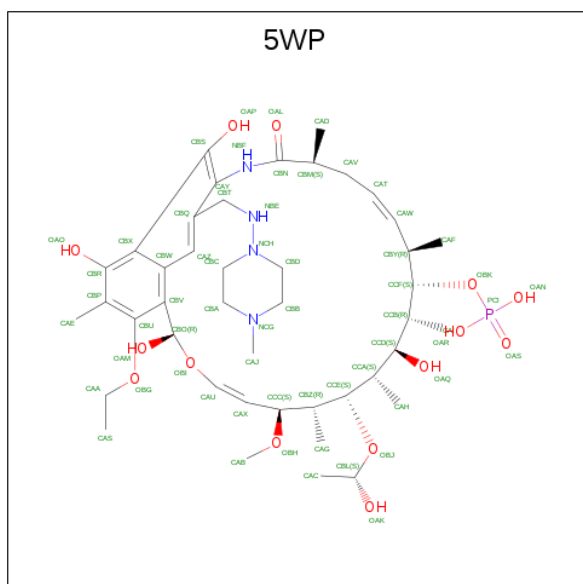
There are 5 unique types of molecules in this entry. The entry contains 5680 atoms, of which 0 are hydrogens and 0 are deuteriums.

In the tables below, the ZeroOcc column contains the number of atoms modelled with zero occupancy, the AltConf column contains the number of residues with at least one atom in alternate conformation and the Trace column contains the number of residues modelled with at most 2 atoms.

- Molecule 1 is a protein called Phosphoenolpyruvate synthase.

Mol	Chain	Residues	Atoms					ZeroOcc	AltConf	Trace
1	A	733	Total	C	N	O	S	0	0	0
			5442	3438	924	1058	22			

- Molecule 2 is Rifampin-phosphate (three-letter code: 5WP) (formula: C₄₃H₆₉N₄O₁₄P).



Mol	Chain	Residues	Atoms					ZeroOcc	AltConf
2	A	1	Total	C	N	O	P	0	0
			62	43	4	14	1		

- Molecule 3 is CHLORIDE ION (three-letter code: CL) (formula: Cl).

Mol	Chain	Residues	Atoms		ZeroOcc	AltConf
3	A	1	Total	Cl	0	0
			1	1		

- Molecule 4 is (4S)-2-METHYL-2,4-PENTANEDIOL (three-letter code: MPD) (formula:

C₆H₁₄O₂).



Mol	Chain	Residues	Atoms			ZeroOcc	AltConf
4	A	1	Total	C	O	0	0
			8	6	2		

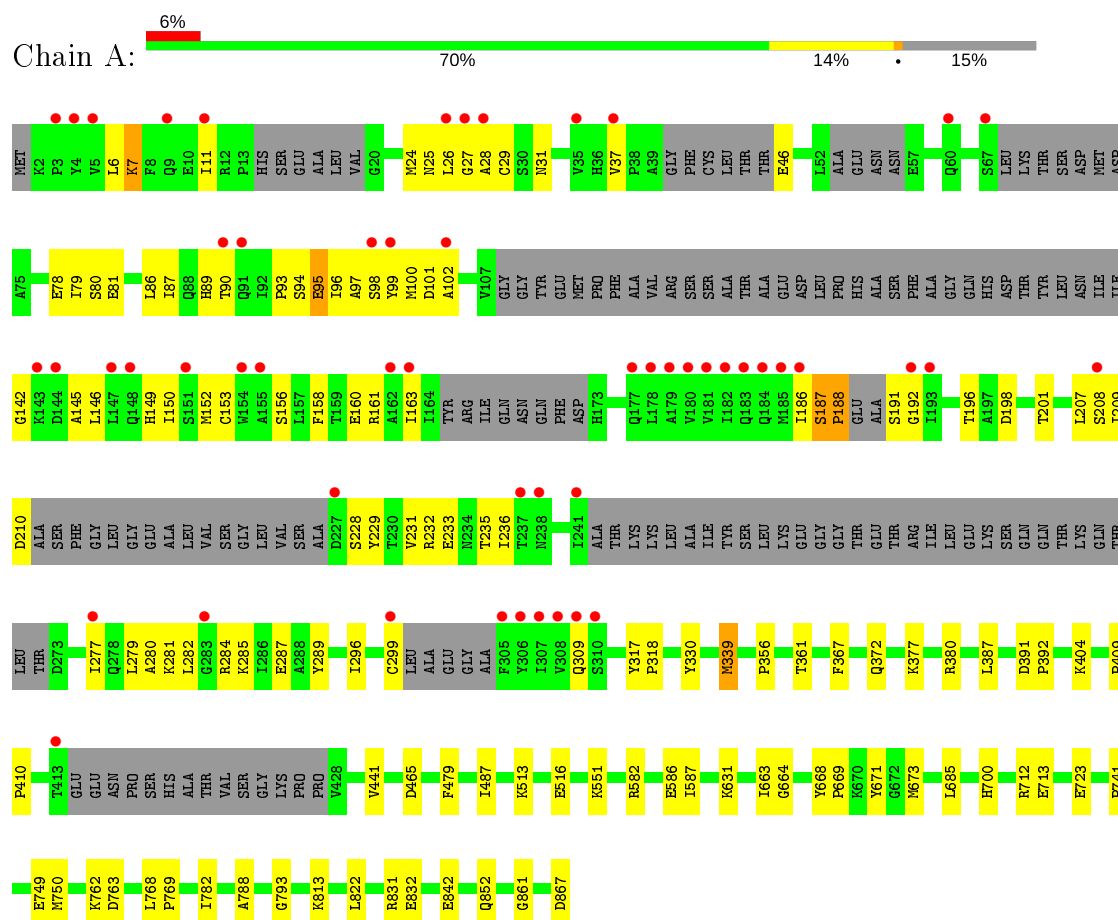
- Molecule 5 is water.

Mol	Chain	Residues	Atoms		ZeroOcc	AltConf
5	A	167	Total	O	0	0
			167	167		

3 Residue-property plots [i](#)

These plots are drawn for all protein, RNA and DNA chains in the entry. The first graphic for a chain summarises the proportions of the various outlier classes displayed in the second graphic. The second graphic shows the sequence view annotated by issues in geometry and electron density. Residues are color-coded according to the number of geometric quality criteria for which they contain at least one outlier: green = 0, yellow = 1, orange = 2 and red = 3 or more. A red dot above a residue indicates a poor fit to the electron density ($\text{RSRZ} > 2$). Stretches of 2 or more consecutive residues without any outlier are shown as a green connector. Residues present in the sample, but not in the model, are shown in grey.

• Molecule 1: Phosphoenolpyruvate synthase



4 Data and refinement statistics

Property	Value	Source
Space group	P 65 2 2	Depositor
Cell constants a, b, c, α , β , γ	151.63Å 151.63Å 191.51Å 90.00° 90.00° 120.00°	Depositor
Resolution (Å)	49.63 – 2.85 49.63 – 2.85	Depositor EDS
% Data completeness (in resolution range)	99.9 (49.63-2.85) 94.8 (49.63-2.85)	Depositor EDS
R_{merge}	0.08	Depositor
R_{sym}	(Not available)	Depositor
$\langle I/\sigma(I) \rangle$ ¹	2.24 (at 2.86Å)	Xtriage
Refinement program	PHENIX 1.9_1692	Depositor
R, R_{free}	0.238 , 0.294 0.244 , 0.295	Depositor DCC
R_{free} test set	1463 reflections (4.73%)	wwPDB-VP
Wilson B-factor (Å ²)	58.3	Xtriage
Anisotropy	0.290	Xtriage
Bulk solvent k_{sol} (e/Å ³), B_{sol} (Å ²)	0.27 , 52.9	EDS
L-test for twinning ²	$\langle L \rangle = 0.48$, $\langle L^2 \rangle = 0.31$	Xtriage
Estimated twinning fraction	No twinning to report.	Xtriage
F_o, F_c correlation	0.90	EDS
Total number of atoms	5680	wwPDB-VP
Average B, all atoms (Å ²)	76.0	wwPDB-VP

Xtriage's analysis on translational NCS is as follows: *The largest off-origin peak in the Patterson function is 2.77% of the height of the origin peak. No significant pseudotranslation is detected.*

¹Intensities estimated from amplitudes.

²Theoretical values of $\langle |L| \rangle$, $\langle L^2 \rangle$ for acentric reflections are 0.5, 0.333 respectively for untwinned datasets, and 0.375, 0.2 for perfectly twinned datasets.

5 Model quality [i](#)

5.1 Standard geometry [i](#)

Bond lengths and bond angles in the following residue types are not validated in this section: MPD, 5WP, CL

The Z score for a bond length (or angle) is the number of standard deviations the observed value is removed from the expected value. A bond length (or angle) with $|Z| > 5$ is considered an outlier worth inspection. RMSZ is the root-mean-square of all Z scores of the bond lengths (or angles).

Mol	Chain	Bond lengths		Bond angles	
		RMSZ	$\# Z > 5$	RMSZ	$\# Z > 5$
1	A	0.33	0/5525	0.61	5/7486 (0.1%)

There are no bond length outliers.

All (5) bond angle outliers are listed below:

Mol	Chain	Res	Type	Atoms	Z	Observed($^{\circ}$)	Ideal($^{\circ}$)
1	A	37	VAL	C-N-CD	-14.86	87.91	120.60
1	A	158	PHE	N-CA-C	8.98	135.24	111.00
1	A	158	PHE	CB-CA-C	-7.87	94.66	110.40
1	A	187	SER	C-N-CD	5.41	139.75	128.40
1	A	188	PRO	CA-N-CD	-5.04	104.44	111.50

There are no chirality outliers.

There are no planarity outliers.

5.2 Too-close contacts [i](#)

In the following table, the Non-H and H(model) columns list the number of non-hydrogen atoms and hydrogen atoms in the chain respectively. The H(added) column lists the number of hydrogen atoms added and optimized by MolProbity. The Clashes column lists the number of clashes within the asymmetric unit, whereas Symm-Clashes lists symmetry related clashes.

Mol	Chain	Non-H	H(model)	H(added)	Clashes	Symm-Clashes
1	A	5442	0	5149	123	0
2	A	62	0	67	12	0
3	A	1	0	0	0	0
4	A	8	0	14	2	0
5	A	167	0	0	6	0
All	All	5680	0	5230	131	0

The all-atom clashscore is defined as the number of clashes found per 1000 atoms (including hydrogen atoms). The all-atom clashscore for this structure is 12.

All (131) close contacts within the same asymmetric unit are listed below, sorted by their clash magnitude.

Atom-1	Atom-2	Interatomic distance (Å)	Clash overlap (Å)
1:A:192:GLY:HA3	1:A:210:ASP:O	1.36	1.25
1:A:94:SER:O	1:A:96:ILE:N	1.71	1.20
1:A:149:HIS:HA	1:A:152:MET:CB	1.78	1.13
1:A:24:MET:O	1:A:27:GLY:N	1.93	1.01
1:A:186:ILE:HG22	1:A:187:SER:H	1.24	1.00
1:A:186:ILE:HG22	1:A:187:SER:N	1.79	0.96
1:A:78:GLU:O	1:A:81:GLU:CB	2.16	0.92
1:A:86:LEU:HA	1:A:89:HIS:CB	2.00	0.92
1:A:28:ALA:HB1	1:A:289:TYR:HE2	1.34	0.91
1:A:186:ILE:CG2	1:A:187:SER:H	1.85	0.88
1:A:24:MET:C	1:A:27:GLY:H	1.75	0.88
1:A:86:LEU:O	1:A:90:THR:N	2.08	0.87
1:A:94:SER:C	1:A:96:ILE:N	2.23	0.86
1:A:28:ALA:HB1	1:A:289:TYR:CE2	2.10	0.85
1:A:87:ILE:O	1:A:90:THR:HG22	1.77	0.84
1:A:98:SER:O	1:A:102:ALA:N	2.10	0.83
1:A:94:SER:C	1:A:96:ILE:H	1.86	0.78
1:A:186:ILE:CG2	1:A:187:SER:N	2.45	0.78
1:A:90:THR:O	1:A:90:THR:HG23	1.86	0.75
1:A:231:VAL:HG22	1:A:236:ILE:HG12	1.66	0.75
1:A:94:SER:O	1:A:95:GLU:C	2.24	0.75
1:A:279:LEU:HA	1:A:282:LEU:HD13	1.70	0.73
1:A:149:HIS:O	1:A:153:CYS:N	2.19	0.71
1:A:160:GLU:O	1:A:163:ILE:N	2.24	0.71
1:A:86:LEU:O	1:A:89:HIS:C	2.28	0.71
1:A:149:HIS:O	1:A:152:MET:N	2.24	0.70
1:A:231:VAL:HG13	1:A:235:THR:O	1.92	0.70
1:A:487:ILE:HD11	1:A:669:PRO:HG2	1.75	0.69
1:A:153:CYS:O	1:A:156:SER:HB3	1.92	0.69
1:A:97:ALA:O	1:A:100:MET:N	2.27	0.68
1:A:192:GLY:CA	1:A:210:ASP:O	2.29	0.68
1:A:822:LEU:O	1:A:831:ARG:NH2	2.27	0.67
1:A:282:LEU:HD12	1:A:282:LEU:N	2.09	0.67
1:A:793:GLY:HA2	1:A:813:LYS:HD2	1.77	0.67
1:A:79:ILE:O	1:A:80:SER:C	2.35	0.64
1:A:90:THR:O	1:A:90:THR:CG2	2.45	0.64
1:A:78:GLU:O	1:A:81:GLU:N	2.29	0.63

Continued on next page...

Continued from previous page...

Atom-1	Atom-2	Interatomic distance (Å)	Clash overlap (Å)
1:A:96:ILE:O	1:A:99:TYR:HB2	1.97	0.63
1:A:284:ARG:HD3	1:A:287:GLU:OE1	2.00	0.62
1:A:46:GLU:HG3	1:A:46:GLU:O	1.98	0.62
2:A:901:5WP:H50	2:A:901:5WP:H43	1.82	0.62
1:A:279:LEU:O	1:A:280:ALA:C	2.38	0.61
1:A:231:VAL:CG1	1:A:235:THR:O	2.49	0.61
1:A:79:ILE:C	1:A:81:GLU:N	2.52	0.61
1:A:87:ILE:O	1:A:90:THR:CG2	2.49	0.61
1:A:24:MET:C	1:A:26:LEU:N	2.49	0.61
1:A:99:TYR:HA	1:A:102:ALA:HB3	1.83	0.59
1:A:94:SER:O	1:A:96:ILE:CA	2.50	0.59
1:A:98:SER:O	1:A:102:ALA:HB2	2.02	0.59
1:A:79:ILE:O	1:A:81:GLU:N	2.36	0.59
1:A:387:LEU:HD11	2:A:901:5WP:H66	1.85	0.59
1:A:664:GLY:HA3	5:A:1006:HOH:O	2.02	0.59
1:A:98:SER:O	1:A:102:ALA:CB	2.52	0.58
1:A:339:MET:HE2	1:A:587:ILE:HD11	1.87	0.57
1:A:6:LEU:CB	1:A:11:ILE:HD11	2.34	0.57
1:A:232:ARG:O	1:A:233:GLU:HG2	2.04	0.57
1:A:768:LEU:HD12	1:A:769:PRO:HD2	1.88	0.56
1:A:842:GLU:HG3	5:A:1034:HOH:O	2.06	0.55
1:A:86:LEU:O	1:A:89:HIS:CA	2.55	0.55
1:A:282:LEU:N	1:A:282:LEU:CD1	2.70	0.54
1:A:24:MET:O	1:A:25:ASN:C	2.45	0.53
1:A:782:ILE:HD13	1:A:788:ALA:HA	1.91	0.53
1:A:513:LYS:HD2	1:A:631:LYS:HD3	1.90	0.53
1:A:96:ILE:O	1:A:99:TYR:N	2.40	0.53
1:A:852:GLN:HG2	1:A:867:ASP:OXT	2.10	0.52
1:A:149:HIS:C	1:A:152:MET:H	2.14	0.51
1:A:296:ILE:HG23	1:A:309:GLN:O	2.10	0.51
1:A:208:SER:HA	1:A:229:TYR:O	2.09	0.51
1:A:465:ASP:OD1	1:A:712:ARG:NH2	2.32	0.51
1:A:404:LYS:NZ	1:A:749:GLU:OE1	2.32	0.50
1:A:279:LEU:O	1:A:281:LYS:N	2.45	0.50
1:A:377:LYS:HA	1:A:380:ARG:HB3	1.94	0.50
1:A:97:ALA:O	1:A:98:SER:C	2.50	0.49
1:A:209:ILE:O	1:A:228:SER:HA	2.12	0.49
1:A:713:GLU:OE2	5:A:1001:HOH:O	2.20	0.49
1:A:582:ARG:NH1	1:A:586:GLU:OE2	2.46	0.49
1:A:281:LYS:O	1:A:285:LYS:HG3	2.13	0.49
1:A:723:GLU:N	1:A:723:GLU:OE1	2.31	0.49

Continued on next page...

Continued from previous page...

Atom-1	Atom-2	Interatomic distance (Å)	Clash overlap (Å)
1:A:160:GLU:O	1:A:161:ARG:C	2.51	0.49
1:A:551:LYS:HD3	5:A:1134:HOH:O	2.12	0.48
1:A:153:CYS:O	1:A:156:SER:CB	2.61	0.48
1:A:372:GLN:HB3	5:A:1051:HOH:O	2.12	0.48
1:A:86:LEU:O	1:A:89:HIS:N	2.46	0.48
4:A:903:MPD:O2	4:A:903:MPD:O4	2.13	0.48
1:A:7:LYS:HA	1:A:7:LYS:HD3	1.76	0.48
1:A:196:THR:HG21	1:A:287:GLU:CD	2.34	0.47
1:A:769:PRO:HD3	1:A:861:GLY:HA3	1.95	0.47
1:A:149:HIS:O	1:A:150:ILE:C	2.51	0.47
1:A:831:ARG:NH1	5:A:1008:HOH:O	2.47	0.47
2:A:901:5WP:H48	2:A:901:5WP:H39	1.41	0.47
1:A:330:TYR:HB3	1:A:367:PHE:HB3	1.97	0.46
1:A:79:ILE:C	1:A:81:GLU:H	2.17	0.46
1:A:516:GLU:HA	1:A:832:GLU:HA	1.98	0.46
1:A:441:VAL:HG13	1:A:668:TYR:CZ	2.51	0.46
1:A:279:LEU:CA	1:A:282:LEU:HD13	2.44	0.46
1:A:86:LEU:CA	1:A:89:HIS:CB	2.82	0.46
2:A:901:5WP:OAN	2:A:901:5WP:H52	2.16	0.46
1:A:361:THR:CG2	4:A:903:MPD:HM2	2.47	0.45
1:A:191:SER:HB2	1:A:299:CYS:HA	1.99	0.45
1:A:741:PRO:HG3	1:A:750:MET:HG2	1.98	0.45
1:A:97:ALA:O	1:A:100:MET:CB	2.65	0.45
1:A:146:LEU:O	1:A:150:ILE:CB	2.65	0.45
1:A:762:LYS:HD2	1:A:763:ASP:N	2.32	0.44
2:A:901:5WP:H20	2:A:901:5WP:H38	1.99	0.44
1:A:207:LEU:HD23	1:A:284:ARG:CZ	2.48	0.44
1:A:236:ILE:HG13	1:A:277:ILE:HD11	2.00	0.43
1:A:142:GLY:O	1:A:145:ALA:HB3	2.18	0.43
1:A:582:ARG:HH21	1:A:671:TYR:HB2	1.84	0.43
1:A:631:LYS:HD2	1:A:631:LYS:HA	1.83	0.43
1:A:356:PRO:HD2	2:A:901:5WP:H14	2.01	0.43
1:A:101:ASP:OD1	1:A:101:ASP:N	2.52	0.42
1:A:93:PRO:C	1:A:95:GLU:N	2.73	0.42
1:A:279:LEU:C	1:A:281:LYS:N	2.69	0.42
1:A:198:ASP:OD2	1:A:201:THR:HG22	2.19	0.42
1:A:86:LEU:C	1:A:89:HIS:H	2.23	0.42
1:A:95:GLU:C	1:A:96:ILE:HG23	2.40	0.42
1:A:29:CYS:C	1:A:31:ASN:H	2.22	0.42
2:A:901:5WP:H26	2:A:901:5WP:H35	1.83	0.42
1:A:95:GLU:O	1:A:96:ILE:CG2	2.68	0.42

Continued on next page...

Continued from previous page...

Atom-1	Atom-2	Interatomic distance (Å)	Clash overlap (Å)
1:A:409:PRO:HA	1:A:410:PRO:HD3	1.70	0.41
1:A:317:TYR:HA	1:A:318:PRO:HD3	1.91	0.41
1:A:391:ASP:HA	1:A:392:PRO:HD3	1.86	0.41
1:A:96:ILE:O	1:A:97:ALA:C	2.59	0.41
1:A:387:LEU:HD21	2:A:901:5WP:H66	2.02	0.41
2:A:901:5WP:H30	2:A:901:5WP:H25	1.55	0.41
1:A:479:PHE:CZ	2:A:901:5WP:H56	2.56	0.41
1:A:685:LEU:HD22	1:A:700:HIS:CE1	2.56	0.41
1:A:279:LEU:O	1:A:282:LEU:HD13	2.20	0.40
1:A:663:ILE:HA	1:A:663:ILE:HD12	1.95	0.40
1:A:673:MET:SD	2:A:901:5WP:H58	2.61	0.40
2:A:901:5WP:H63	2:A:901:5WP:H69	2.02	0.40

There are no symmetry-related clashes.

5.3 Torsion angles [i](#)

5.3.1 Protein backbone [i](#)

In the following table, the Percentiles column shows the percent Ramachandran outliers of the chain as a percentile score with respect to all X-ray entries followed by that with respect to entries of similar resolution.

The Analysed column shows the number of residues for which the backbone conformation was analysed, and the total number of residues.

Mol	Chain	Analysed	Favoured	Allowed	Outliers	Percentiles
1	A	709/867 (82%)	672 (95%)	36 (5%)	1 (0%)	51 79

All (1) Ramachandran outliers are listed below:

Mol	Chain	Res	Type
1	A	95	GLU

5.3.2 Protein sidechains [i](#)

In the following table, the Percentiles column shows the percent sidechain outliers of the chain as a percentile score with respect to all X-ray entries followed by that with respect to entries of similar resolution.

The Analysed column shows the number of residues for which the sidechain conformation was

analysed, and the total number of residues.

Mol	Chain	Analysed	Rotameric	Outliers	Percentiles	
1	A	538/746 (72%)	535 (99%)	3 (1%)	86	95

All (3) residues with a non-rotameric sidechain are listed below:

Mol	Chain	Res	Type
1	A	7	LYS
1	A	188	PRO
1	A	339	MET

Some sidechains can be flipped to improve hydrogen bonding and reduce clashes. There are no such sidechains identified.

5.3.3 RNA [i](#)

There are no RNA molecules in this entry.

5.4 Non-standard residues in protein, DNA, RNA chains [i](#)

There are no non-standard protein/DNA/RNA residues in this entry.

5.5 Carbohydrates [i](#)

There are no carbohydrates in this entry.

5.6 Ligand geometry [i](#)

Of 3 ligands modelled in this entry, 1 is monoatomic - leaving 2 for Mogul analysis.

In the following table, the Counts columns list the number of bonds (or angles) for which Mogul statistics could be retrieved, the number of bonds (or angles) that are observed in the model and the number of bonds (or angles) that are defined in the Chemical Component Dictionary. The Link column lists molecule types, if any, to which the group is linked. The Z score for a bond length (or angle) is the number of standard deviations the observed value is removed from the expected value. A bond length (or angle) with $|Z| > 2$ is considered an outlier worth inspection. RMSZ is the root-mean-square of all Z scores of the bond lengths (or angles).

Mol	Type	Chain	Res	Link	Bond lengths			Bond angles		
					Counts	RMSZ	$\# Z > 2$	Counts	RMSZ	$\# Z > 2$
2	5WP	A	901	-	62,65,65	2.35	18 (29%)	80,94,94	2.32	15 (18%)

Mol	Type	Chain	Res	Link	Bond lengths			Bond angles		
					Counts	RMSZ	# Z > 2	Counts	RMSZ	# Z > 2
4	MPD	A	903	-	7,7,7	0.51	0	9,10,10	0.53	0

In the following table, the Chirals column lists the number of chiral outliers, the number of chiral centers analysed, the number of these observed in the model and the number defined in the Chemical Component Dictionary. Similar counts are reported in the Torsion and Rings columns. '-' means no outliers of that kind were identified.

Mol	Type	Chain	Res	Link	Chirals	Torsions	Rings
2	5WP	A	901	-	-	38/68/81/81	0/3/4/4
4	MPD	A	903	-	-	0/5/5/5	-

All (18) bond length outliers are listed below:

Mol	Chain	Res	Type	Atoms	Z	Observed(Å)	Ideal(Å)
2	A	901	5WP	CBU-CBV	11.12	1.48	1.37
2	A	901	5WP	CBV-CBW	5.52	1.53	1.43
2	A	901	5WP	OAQ-CBR	4.58	1.50	1.35
2	A	901	5WP	CBU-CBP	4.04	1.46	1.39
2	A	901	5WP	OAP-CBS	3.64	1.47	1.35
2	A	901	5WP	CBW-CBX	3.15	1.49	1.42
2	A	901	5WP	CAZ-CBW	3.13	1.48	1.42
2	A	901	5WP	OAL-CBN	-3.09	1.17	1.23
2	A	901	5WP	CBS-CBX	3.05	1.52	1.43
2	A	901	5WP	OBI-CBO	2.96	1.44	1.41
2	A	901	5WP	CAZ-CBQ	2.87	1.42	1.37
2	A	901	5WP	OBG-CBU	2.58	1.44	1.39
2	A	901	5WP	CBC-NCH	-2.56	1.43	1.46
2	A	901	5WP	CAH-CCA	-2.51	1.48	1.53
2	A	901	5WP	CAW-CAT	2.34	1.41	1.31
2	A	901	5WP	OBG-CAA	-2.13	1.35	1.43
2	A	901	5WP	OBI-CAU	2.11	1.42	1.37
2	A	901	5WP	CBD-NCH	-2.04	1.44	1.46

All (15) bond angle outliers are listed below:

Mol	Chain	Res	Type	Atoms	Z	Observed(°)	Ideal(°)
2	A	901	5WP	CBM-CBN-NBF	12.33	127.22	114.45
2	A	901	5WP	CBT-NBF-CBN	8.93	139.34	123.11
2	A	901	5WP	OAL-CBN-NBF	-5.92	111.20	123.93
2	A	901	5WP	CBB-NCG-CBA	4.69	116.09	109.52
2	A	901	5WP	CAV-CBM-CBN	4.28	115.28	109.99
2	A	901	5WP	OBJ-CCE-CCA	3.50	112.44	108.22

Continued on next page...

Continued from previous page...

Mol	Chain	Res	Type	Atoms	Z	Observed(°)	Ideal(°)
2	A	901	5WP	CBU-CBV-CBO	3.26	122.99	118.90
2	A	901	5WP	CAA-OBG-CBU	3.12	128.23	115.76
2	A	901	5WP	CBD-CBB-NCG	2.88	114.06	110.80
2	A	901	5WP	CBC-CBA-NCG	2.88	114.06	110.80
2	A	901	5WP	CAY-CBQ-CAZ	-2.61	119.55	121.92
2	A	901	5WP	CBV-CBU-CBP	-2.52	120.60	123.81
2	A	901	5WP	CCA-CCE-CBZ	-2.28	110.03	114.68
2	A	901	5WP	CAZ-CBQ-CBT	2.18	122.25	119.27
2	A	901	5WP	CBR-CBX-CBW	2.18	120.09	117.30

There are no chirality outliers.

All (38) torsion outliers are listed below:

Mol	Chain	Res	Type	Atoms
2	A	901	5WP	OAM-CBO-CBV-CBW
2	A	901	5WP	OBI-CBO-CBV-CBU
2	A	901	5WP	OAM-CBO-OBI-CAU
2	A	901	5WP	CAX-CAU-OBI-CBO
2	A	901	5WP	CAX-CCC-OBH-CAB
2	A	901	5WP	CBZ-CCC-OBH-CAB
2	A	901	5WP	CCE-CBZ-CCC-CAX
2	A	901	5WP	CAG-CBZ-CCC-OBH
2	A	901	5WP	CCE-CBZ-CCC-OBH
2	A	901	5WP	CCC-CBZ-CCE-OBJ
2	A	901	5WP	CCC-CBZ-CCE-CCA
2	A	901	5WP	CAG-CBZ-CCE-OBJ
2	A	901	5WP	CAG-CBZ-CCE-CCA
2	A	901	5WP	CBZ-CCE-OBJ-CBL
2	A	901	5WP	OAK-CBL-OBJ-CCE
2	A	901	5WP	CAI-CCB-CCD-OAQ
2	A	901	5WP	CCF-CCB-CCD-OAQ
2	A	901	5WP	CAF-CBY-CCF-CCB
2	A	901	5WP	CAV-CBM-CBN-OAL
2	A	901	5WP	CAV-CBM-CBN-NBF
2	A	901	5WP	CCF-CCB-CCD-CCA
2	A	901	5WP	CCD-CCB-CCF-CBY
2	A	901	5WP	CAI-CCB-CCD-CCA
2	A	901	5WP	CAH-CCA-CCE-OBJ
2	A	901	5WP	CAT-CAW-CBY-CAF
2	A	901	5WP	CAG-CBZ-CCC-CAX
2	A	901	5WP	CAT-CAW-CBY-CCF
2	A	901	5WP	CCD-CCA-CCE-OBJ

Continued on next page...

Continued from previous page...

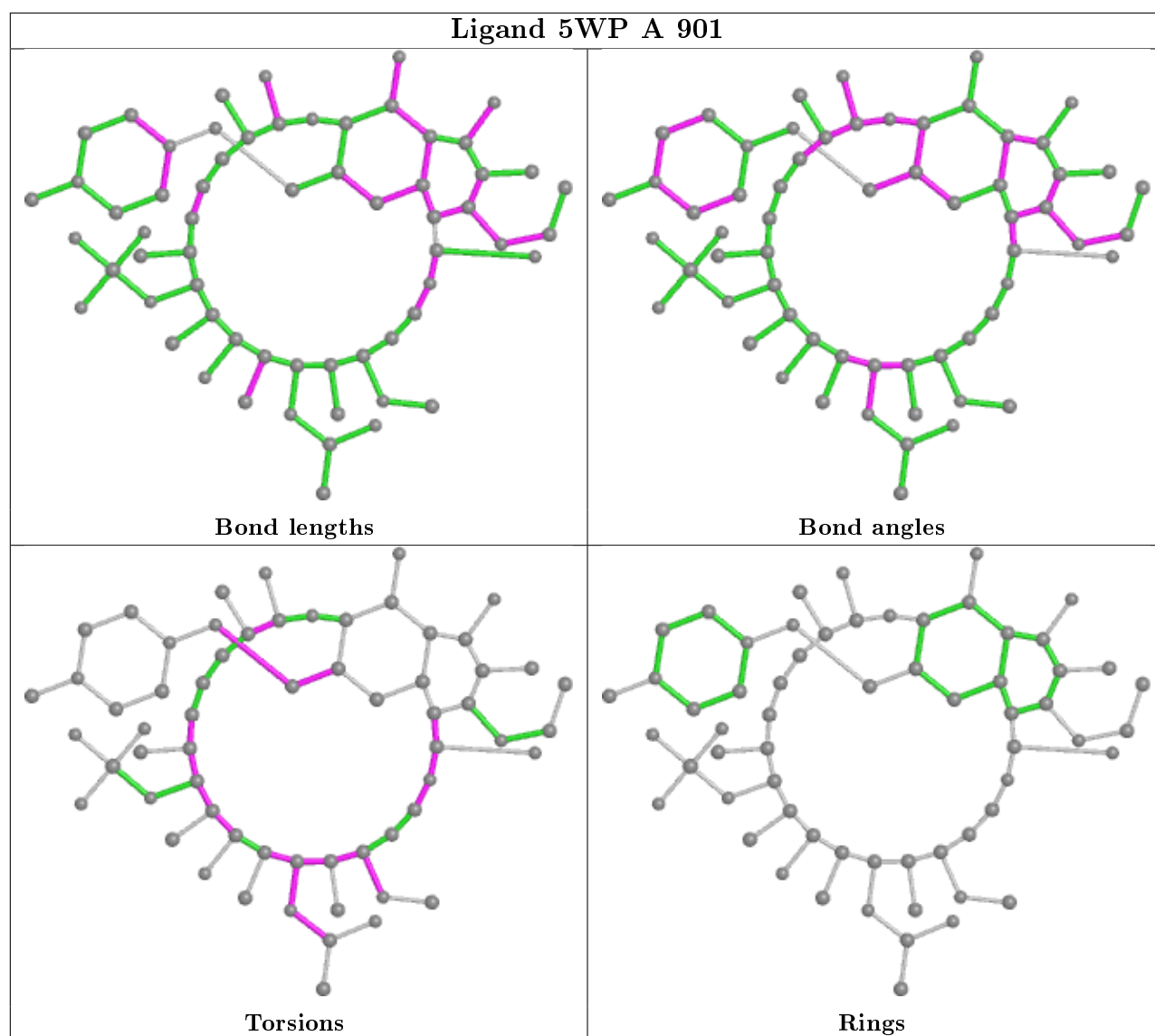
Mol	Chain	Res	Type	Atoms
2	A	901	5WP	CAF-CBY-CCF-OBK
2	A	901	5WP	OBI-CBO-CBV-CBW
2	A	901	5WP	CAW-CBY-CCF-CCB
2	A	901	5WP	CAH-CCA-CCE-CBZ
2	A	901	5WP	NBE-CAY-CBQ-CAZ
2	A	901	5WP	CAI-CCB-CCF-CBY
2	A	901	5WP	CBQ-CAY-NBE-NCH
2	A	901	5WP	CAW-CBY-CCF-OBK
2	A	901	5WP	CCD-CCA-CCE-CBZ
2	A	901	5WP	CAI-CCB-CCF-OBK

There are no ring outliers.

2 monomers are involved in 14 short contacts:

Mol	Chain	Res	Type	Clashes	Symm-Clashes
2	A	901	5WP	12	0
4	A	903	MPD	2	0

The following is a two-dimensional graphical depiction of Mogul quality analysis of bond lengths, bond angles, torsion angles, and ring geometry for all instances of the Ligand of Interest. In addition, ligands with molecular weight > 250 and outliers as shown on the validation Tables will also be included. For torsion angles, if less than 5% of the Mogul distribution of torsion angles is within 10 degrees of the torsion angle in question, then that torsion angle is considered an outlier. Any bond that is central to one or more torsion angles identified as an outlier by Mogul will be highlighted in the graph. For rings, the root-mean-square deviation (RMSD) between the ring in question and similar rings identified by Mogul is calculated over all ring torsion angles. If the average RMSD is greater than 60 degrees and the minimal RMSD between the ring in question and any Mogul-identified rings is also greater than 60 degrees, then that ring is considered an outlier. The outliers are highlighted in purple. The color gray indicates Mogul did not find sufficient equivalents in the CSD to analyse the geometry.



5.7 Other polymers [i](#)

There are no such residues in this entry.

5.8 Polymer linkage issues [i](#)

There are no chain breaks in this entry.

6 Fit of model and data ⓘ

6.1 Protein, DNA and RNA chains ⓘ

In the following table, the column labelled ‘#RSRZ> 2’ contains the number (and percentage) of RSRZ outliers, followed by percent RSRZ outliers for the chain as percentile scores relative to all X-ray entries and entries of similar resolution. The OWAB column contains the minimum, median, 95th percentile and maximum values of the occupancy-weighted average B-factor per residue. The column labelled ‘Q< 0.9’ lists the number of (and percentage) of residues with an average occupancy less than 0.9.

Mol	Chain	Analysed	<RSRZ>	#RSRZ>2	OWAB(Å ²)	Q<0.9
1	A	733/867 (84%)	0.03	53 (7%) 15 11	32, 60, 186, 259	0

All (53) RSRZ outliers are listed below:

Mol	Chain	Res	Type	RSRZ
1	A	192	GLY	9.3
1	A	163	ILE	6.3
1	A	179	ALA	6.0
1	A	308	VAL	5.7
1	A	147	LEU	5.0
1	A	180	VAL	4.9
1	A	67	SER	4.9
1	A	37	VAL	4.8
1	A	148	GLN	4.8
1	A	151	SER	4.7
1	A	299	CYS	4.6
1	A	305	PHE	4.5
1	A	155	ALA	4.5
1	A	27	GLY	4.4
1	A	306	TYR	4.4
1	A	185	MET	4.2
1	A	277	ILE	3.9
1	A	241	ILE	3.8
1	A	98	SER	3.7
1	A	177	GLN	3.7
1	A	99	TYR	3.6
1	A	307	ILE	3.6
1	A	154	TRP	3.5
1	A	91	GLN	3.5
1	A	310	SER	3.4
1	A	208	SER	3.4
1	A	193	ILE	3.4

Continued on next page...

Continued from previous page...

Mol	Chain	Res	Type	RSRZ
1	A	413	THR	3.2
1	A	90	THR	3.2
1	A	5	VAL	3.2
1	A	181	VAL	2.9
1	A	4	TYR	2.8
1	A	184	GLN	2.6
1	A	178	LEU	2.6
1	A	144	ASP	2.6
1	A	3	PRO	2.6
1	A	162	ALA	2.6
1	A	11	ILE	2.5
1	A	26	LEU	2.5
1	A	227	ASP	2.5
1	A	283	GLY	2.5
1	A	237	THR	2.4
1	A	9	GLN	2.4
1	A	309	GLN	2.4
1	A	238	ASN	2.4
1	A	143	LYS	2.3
1	A	182	ILE	2.3
1	A	28	ALA	2.3
1	A	60	GLN	2.3
1	A	183	GLN	2.2
1	A	102	ALA	2.2
1	A	186	ILE	2.1
1	A	35	VAL	2.1

6.2 Non-standard residues in protein, DNA, RNA chains [\(i\)](#)

There are no non-standard protein/DNA/RNA residues in this entry.

6.3 Carbohydrates [\(i\)](#)

There are no carbohydrates in this entry.

6.4 Ligands [\(i\)](#)

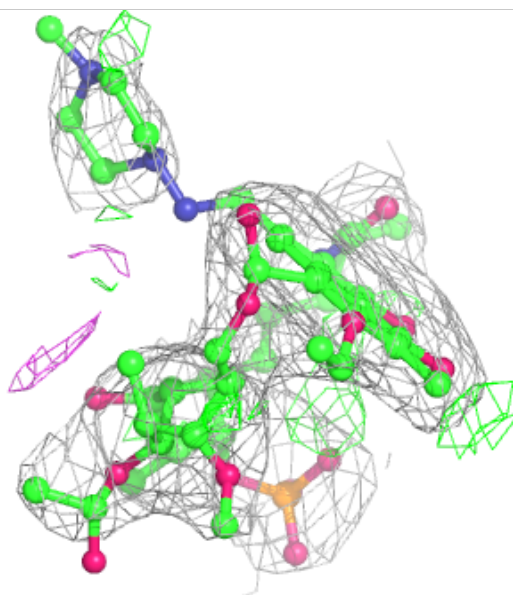
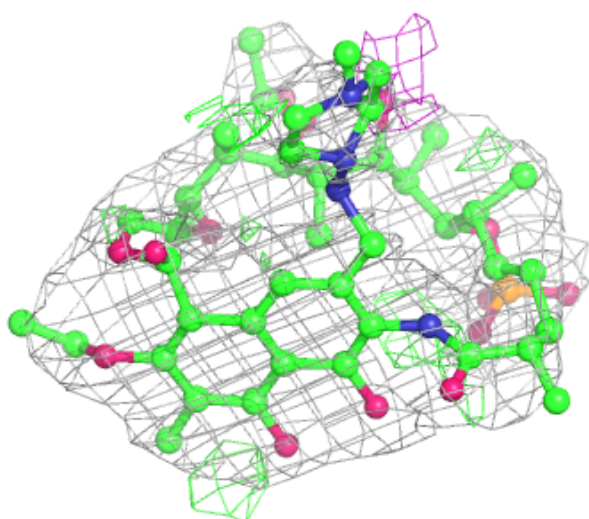
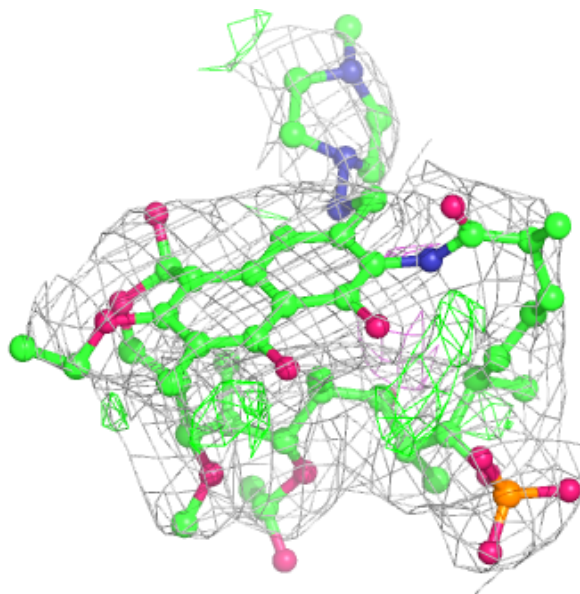
In the following table, the Atoms column lists the number of modelled atoms in the group and the number defined in the chemical component dictionary. The B-factors column lists the minimum, median, 95th percentile and maximum values of B factors of atoms in the group. The column labelled 'Q< 0.9' lists the number of atoms with occupancy less than 0.9.

Mol	Type	Chain	Res	Atoms	RSCC	RSR	B-factors(\AA^2)	Q<0.9
4	MPD	A	903	8/8	0.91	0.20	62,72,76,86	0
2	5WP	A	901	62/62	0.93	0.24	23,69,104,113	0
3	CL	A	902	1/1	0.95	0.11	84,84,84,84	1

The following is a graphical depiction of the model fit to experimental electron density of all instances of the Ligand of Interest. In addition, ligands with molecular weight > 250 and outliers as shown on the geometry validation Tables will also be included. Each fit is shown from different orientation to approximate a three-dimensional view.

Electron density around 5WP A 901:

2mF_o-DF_c (at 0.7 rmsd) in gray
mF_o-DF_c (at 3 rmsd) in purple (negative)
and green (positive)



6.5 Other polymers [i](#)

There are no such residues in this entry.