



Full wwPDB X-ray Structure Validation Report ⓘ

May 24, 2020 – 11:02 pm BST

PDB ID : 6FBP
Title : Human Methionine Adenosyltransferase II mutant (S114A) in P22121 crystal form
Authors : Panmanee, J.; Antonyuk, S.V.; Hasnain, S.S.
Deposited on : 2017-12-19
Resolution : 1.65 Å(reported)

This is a Full wwPDB X-ray Structure Validation Report for a publicly released PDB entry.

We welcome your comments at validation@mail.wwpdb.org

A user guide is available at

<https://www.wwpdb.org/validation/2017/XrayValidationReportHelp>

with specific help available everywhere you see the ⓘ symbol.

The following versions of software and data (see [references ⓘ](#)) were used in the production of this report:

MolProbity : 4.02b-467
Mogul : 1.8.5 (274361), CSD as541be (2020)
Xtriage (Phenix) : 1.13
EDS : 2.11
buster-report : 1.1.7 (2018)
Percentile statistics : 20191225.v01 (using entries in the PDB archive December 25th 2019)
Refmac : 5.8.0158
CCP4 : 7.0.044 (Gargrove)
Ideal geometry (proteins) : Engh & Huber (2001)
Ideal geometry (DNA, RNA) : Parkinson et al. (1996)
Validation Pipeline (wwPDB-VP) : 2.11

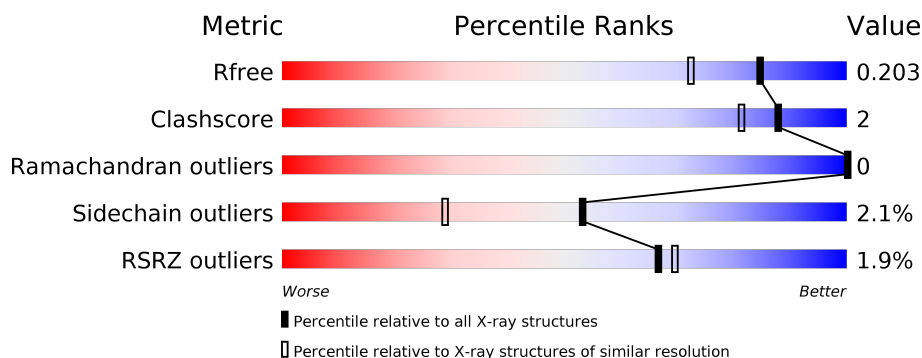
1 Overall quality at a glance

The following experimental techniques were used to determine the structure:

X-RAY DIFFRACTION

The reported resolution of this entry is 1.65 Å.

Percentile scores (ranging between 0-100) for global validation metrics of the entry are shown in the following graphic. The table shows the number of entries on which the scores are based.



Metric	Whole archive (#Entries)	Similar resolution (#Entries, resolution range(Å))
R_{free}	130704	1827 (1.66-1.66)
Clashscore	141614	1931 (1.66-1.66)
Ramachandran outliers	138981	1891 (1.66-1.66)
Sidechain outliers	138945	1891 (1.66-1.66)
RSRZ outliers	127900	1791 (1.66-1.66)

The table below summarises the geometric issues observed across the polymeric chains and their fit to the electron density. The red, orange, yellow and green segments on the lower bar indicate the fraction of residues that contain outliers for ≥ 3 , 2, 1 and 0 types of geometric quality criteria respectively. A grey segment represents the fraction of residues that are not modelled. The numeric value for each fraction is indicated below the corresponding segment, with a dot representing fractions $\leq 5\%$. The upper red bar (where present) indicates the fraction of residues that have poor fit to the electron density. The numeric value is given above the bar.

Mol	Chain	Length	Quality of chain
1	A	395	 % 91% 5% • •
1	B	395	 3% 89% 5% • 5%

2 Entry composition [i](#)

There are 9 unique types of molecules in this entry. The entry contains 6479 atoms, of which 0 are hydrogens and 0 are deuteriums.

In the tables below, the ZeroOcc column contains the number of atoms modelled with zero occupancy, the AltConf column contains the number of residues with at least one atom in alternate conformation and the Trace column contains the number of residues modelled with at most 2 atoms.

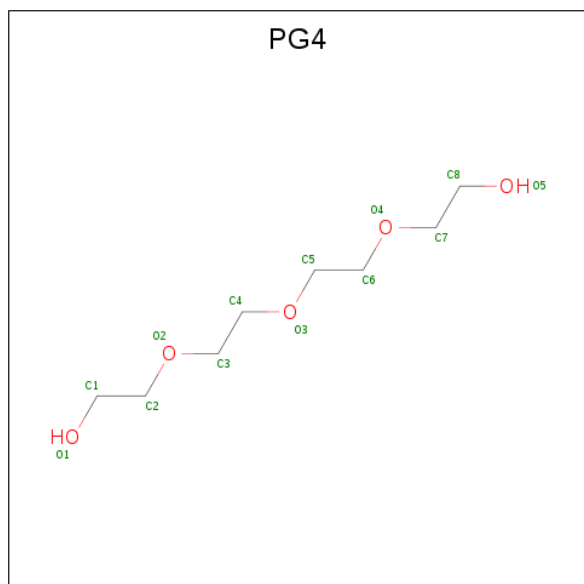
- Molecule 1 is a protein called S-adenosylmethionine synthase isoform type-2.

Mol	Chain	Residues	Atoms					ZeroOcc	AltConf	Trace
1	A	380	Total	C	N	O	S	0	3	0
			2965	1874	518	561	12			
1	B	374	Total	C	N	O	S	0	4	0
			2937	1860	517	549	11			

There are 2 discrepancies between the modelled and reference sequences:

Chain	Residue	Modelled	Actual	Comment	Reference
A	114	ALA	SER	conflict	UNP P31153
B	114	ALA	SER	conflict	UNP P31153

- Molecule 2 is TETRAETHYLENE GLYCOL (three-letter code: PG4) (formula: C₈H₁₈O₅).



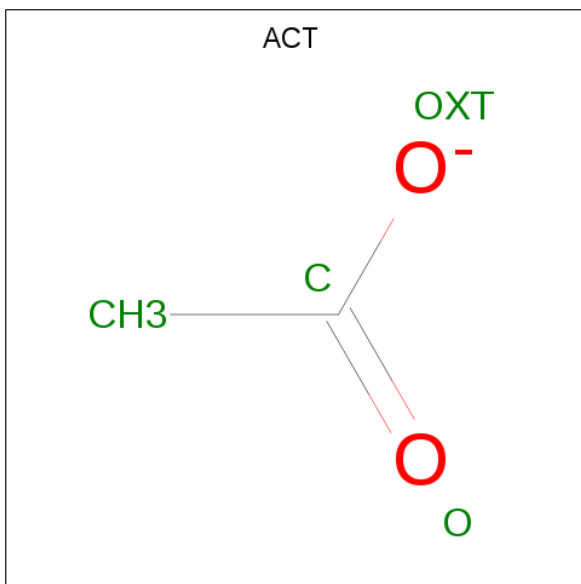
Mol	Chain	Residues	Atoms			ZeroOcc	AltConf
2	A	1	Total	C	O	0	0
			13	8	5		

Continued on next page...

Continued from previous page...

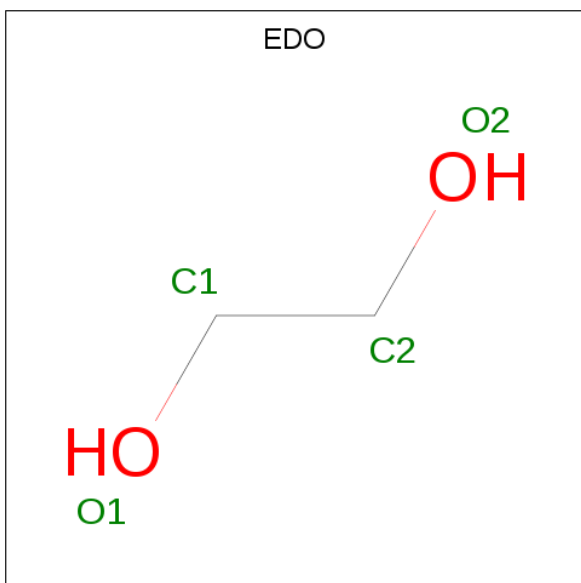
Mol	Chain	Residues	Atoms			ZeroOcc	AltConf
2	B	1	Total	C	O	0	0
			13	8	5		

- Molecule 3 is ACETATE ION (three-letter code: ACT) (formula: $C_2H_3O_2$).



Mol	Chain	Residues	Atoms			ZeroOcc	AltConf
3	A	1	Total	C	O	0	0
			4	2	2		

- Molecule 4 is 1,2-ETHANEDIOL (three-letter code: EDO) (formula: $C_2H_6O_2$).



Mol	Chain	Residues	Atoms	ZeroOcc	AltConf
4	A	1	Total C O 4 2 2	0	0
4	A	1	Total C O 4 2 2	0	0
4	A	1	Total C O 4 2 2	0	0

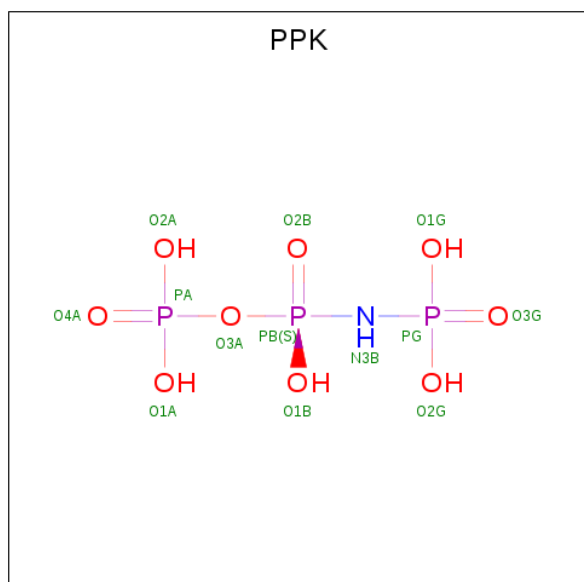
- Molecule 5 is POTASSIUM ION (three-letter code: K) (formula: K) (labeled as "Ligand of Interest" by author).

Mol	Chain	Residues	Atoms	ZeroOcc	AltConf
5	B	1	Total K 1 1	0	0
5	A	1	Total K 1 1	0	0

- Molecule 6 is MAGNESIUM ION (three-letter code: MG) (formula: Mg) (labeled as "Ligand of Interest" by author).

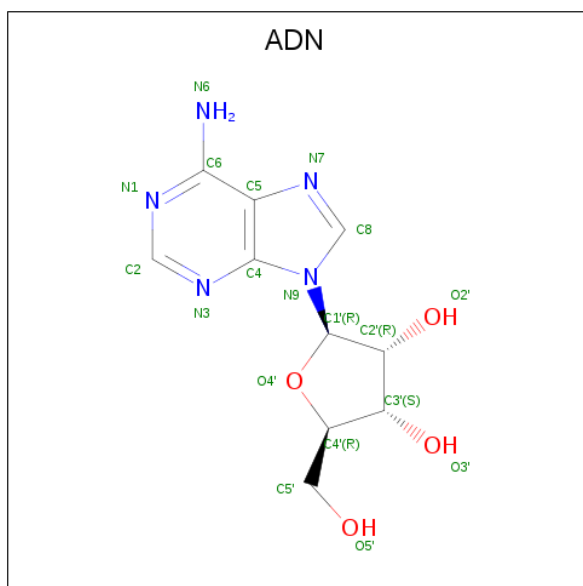
Mol	Chain	Residues	Atoms	ZeroOcc	AltConf
6	B	1	Total Mg 1 1	0	0
6	A	1	Total Mg 1 1	0	0

- Molecule 7 is (DIPHOSPHONO)AMINOPHOSPHONIC ACID (three-letter code: PPK) (formula: $\text{H}_6\text{NO}_9\text{P}_3$) (labeled as "Ligand of Interest" by author).



Mol	Chain	Residues	Atoms				ZeroOcc	AltConf
7	B	1	Total	N	O	P	0	0
			13	1	9	3		

- Molecule 8 is ADENOSINE (three-letter code: ADN) (formula: $C_{10}H_{13}N_5O_4$) (labeled as "Ligand of Interest" by author).



Mol	Chain	Residues	Atoms				ZeroOcc	AltConf
8	B	1	Total	C	N	O	0	0
			19	10	5	4		

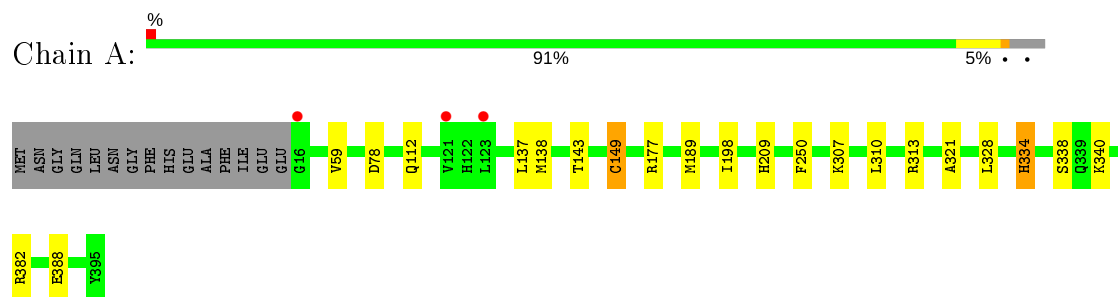
- Molecule 9 is water.

Mol	Chain	Residues	Atoms	ZeroOcc	AltConf
9	A	246	Total O 251 251	0	5
9	B	242	Total O 248 248	0	5

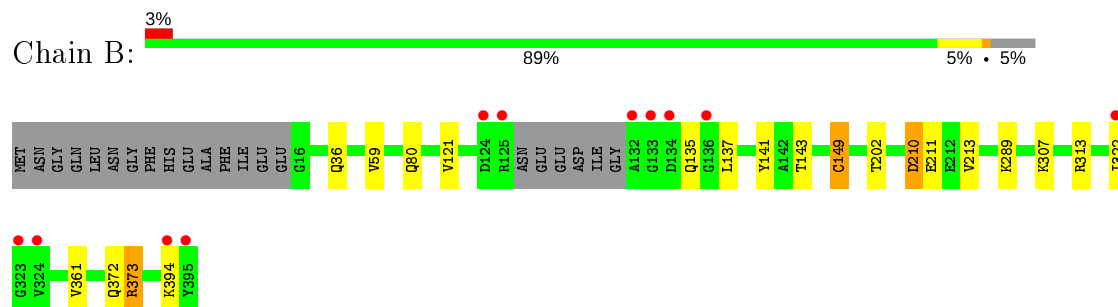
3 Residue-property plots [i](#)

These plots are drawn for all protein, RNA and DNA chains in the entry. The first graphic for a chain summarises the proportions of the various outlier classes displayed in the second graphic. The second graphic shows the sequence view annotated by issues in geometry and electron density. Residues are color-coded according to the number of geometric quality criteria for which they contain at least one outlier: green = 0, yellow = 1, orange = 2 and red = 3 or more. A red dot above a residue indicates a poor fit to the electron density ($RSRZ > 2$). Stretches of 2 or more consecutive residues without any outlier are shown as a green connector. Residues present in the sample, but not in the model, are shown in grey.

- Molecule 1: S-adenosylmethionine synthase isoform type-2



- Molecule 1: S-adenosylmethionine synthase isoform type-2



4 Data and refinement statistics

Property	Value	Source
Space group	P 2 21 21	Depositor
Cell constants a, b, c, α , β , γ	62.09Å 102.87Å 108.17Å 90.00° 90.00° 90.00°	Depositor
Resolution (Å)	54.08 – 1.65 54.08 – 1.65	Depositor EDS
% Data completeness (in resolution range)	97.2 (54.08-1.65) 97.2 (54.08-1.65)	Depositor EDS
R_{merge}	0.11	Depositor
R_{sym}	(Not available)	Depositor
$\langle I/\sigma(I) \rangle$ ¹	1.89 (at 1.65Å)	Xtriage
Refinement program	REFMAC 5.8.0189	Depositor
R, R_{free}	0.163 , 0.195 0.173 , 0.203	Depositor DCC
R_{free} test set	4092 reflections (5.01%)	wwPDB-VP
Wilson B-factor (Å ²)	14.9	Xtriage
Anisotropy	0.815	Xtriage
Bulk solvent k_{sol} (e/Å ³), B_{sol} (Å ²)	0.37 , 48.1	EDS
L-test for twinning ²	$\langle L \rangle = 0.48$, $\langle L^2 \rangle = 0.31$	Xtriage
Estimated twinning fraction	0.018 for -h,l,k	Xtriage
F_o, F_c correlation	0.96	EDS
Total number of atoms	6479	wwPDB-VP
Average B, all atoms (Å ²)	20.0	wwPDB-VP

Xtriage's analysis on translational NCS is as follows: *The largest off-origin peak in the Patterson function is 4.24% of the height of the origin peak. No significant pseudotranslation is detected.*

¹Intensities estimated from amplitudes.

²Theoretical values of $\langle |L| \rangle$, $\langle L^2 \rangle$ for acentric reflections are 0.5, 0.333 respectively for untwinned datasets, and 0.375, 0.2 for perfectly twinned datasets.

5 Model quality [i](#)

5.1 Standard geometry [i](#)

Bond lengths and bond angles in the following residue types are not validated in this section: MG, PPK, K, EDO, PG4, ACT, ADN

The Z score for a bond length (or angle) is the number of standard deviations the observed value is removed from the expected value. A bond length (or angle) with $|Z| > 5$ is considered an outlier worth inspection. RMSZ is the root-mean-square of all Z scores of the bond lengths (or angles).

Mol	Chain	Bond lengths		Bond angles	
		RMSZ	$\# Z > 5$	RMSZ	$\# Z > 5$
1	A	0.78	0/3030	0.88	1/4100 (0.0%)
1	B	0.75	0/3001	0.88	1/4058 (0.0%)
All	All	0.77	0/6031	0.88	2/8158 (0.0%)

There are no bond length outliers.

All (2) bond angle outliers are listed below:

Mol	Chain	Res	Type	Atoms	Z	Observed(°)	Ideal(°)
1	B	210	ASP	CB-CG-OD2	-9.21	110.02	118.30
1	A	78	ASP	CB-CG-OD2	-5.05	113.75	118.30

There are no chirality outliers.

There are no planarity outliers.

5.2 Too-close contacts [i](#)

In the following table, the Non-H and H(model) columns list the number of non-hydrogen atoms and hydrogen atoms in the chain respectively. The H(added) column lists the number of hydrogen atoms added and optimized by MolProbity. The Clashes column lists the number of clashes within the asymmetric unit, whereas Symm-Clashes lists symmetry related clashes.

Mol	Chain	Non-H	H(model)	H(added)	Clashes	Symm-Clashes
1	A	2965	0	2958	12	0
1	B	2937	0	2950	12	0
2	A	13	0	18	2	0
2	B	13	0	18	0	0
3	A	4	0	3	0	0
4	A	12	0	18	0	0
5	A	1	0	0	0	0

Continued on next page...

Continued from previous page...

Mol	Chain	Non-H	H(model)	H(added)	Clashes	Symm-Clashes
5	B	1	0	0	0	0
6	A	1	0	0	0	0
6	B	1	0	0	0	0
7	B	13	0	1	1	0
8	B	19	0	13	0	0
9	A	251	0	0	2	0
9	B	248	0	0	2	0
All	All	6479	0	5979	24	0

The all-atom clashscore is defined as the number of clashes found per 1000 atoms (including hydrogen atoms). The all-atom clashscore for this structure is 2.

All (24) close contacts within the same asymmetric unit are listed below, sorted by their clash magnitude.

Atom-1	Atom-2	Interatomic distance (Å)	Clash overlap (Å)
1:A:149:CYS:SG	1:A:307:LYS:NZ	2.50	0.84
1:B:373:ARG:HB3	1:B:373:ARG:HH11	1.47	0.78
1:B:36[B]:GLN:HE21	1:B:372:GLN:HE21	1.40	0.69
7:B:401:PPK:PG	9:B:508:HOH:O	2.52	0.66
1:A:189:MET:HG3	1:A:198:ILE:HD11	1.78	0.64
1:A:382:ARG:O	1:A:388:GLU:HG3	1.98	0.63
1:B:141:TYR:OH	1:B:313:ARG:HD2	2.01	0.61
1:B:373:ARG:HB3	1:B:373:ARG:NH1	2.16	0.60
2:A:401:PG4:H81	9:A:574:HOH:O	2.02	0.59
1:B:149:CYS:SG	1:B:307:LYS:NZ	2.68	0.59
1:A:189:MET:CG	1:A:198:ILE:HD11	2.32	0.58
1:A:112:GLN:HG2	9:A:675:HOH:O	2.09	0.53
1:B:80:GLN:NE2	9:B:502:HOH:O	2.34	0.52
1:A:321:ALA:HB2	1:A:328:LEU:HD11	1.95	0.48
1:A:334:HIS:CD2	1:A:338:SER:HB3	2.50	0.46
1:B:210:ASP:OD1	1:B:213:VAL:HG12	2.17	0.45
1:B:135:GLN:HB2	1:B:322:ILE:HD12	1.99	0.45
1:A:313:ARG:HH22	2:A:401:PG4:H61	1.81	0.44
1:A:310:LEU:HD22	1:A:340:LYS:HD2	2.00	0.44
1:B:143:THR:O	1:B:149:CYS:HA	2.19	0.43
1:A:177:ARG:HD2	1:A:209:HIS:C	2.39	0.43
1:A:328:LEU:HD13	1:B:202:THR:HG21	2.02	0.42
1:A:59:VAL:HG21	1:B:59:VAL:HG21	2.02	0.40

There are no symmetry-related clashes.

5.3 Torsion angles

5.3.1 Protein backbone

In the following table, the Percentiles column shows the percent Ramachandran outliers of the chain as a percentile score with respect to all X-ray entries followed by that with respect to entries of similar resolution.

The Analysed column shows the number of residues for which the backbone conformation was analysed, and the total number of residues.

Mol	Chain	Analysed	Favoured	Allowed	Outliers	Percentiles	
1	A	381/395 (96%)	372 (98%)	9 (2%)	0	100	100
1	B	374/395 (95%)	358 (96%)	16 (4%)	0	100	100
All	All	755/790 (96%)	730 (97%)	25 (3%)	0	100	100

There are no Ramachandran outliers to report.

5.3.2 Protein sidechains

In the following table, the Percentiles column shows the percent sidechain outliers of the chain as a percentile score with respect to all X-ray entries followed by that with respect to entries of similar resolution.

The Analysed column shows the number of residues for which the sidechain conformation was analysed, and the total number of residues.

Mol	Chain	Analysed	Rotameric	Outliers	Percentiles	
1	A	316/326 (97%)	310 (98%)	6 (2%)	57	34
1	B	313/326 (96%)	306 (98%)	7 (2%)	52	27
All	All	629/652 (96%)	616 (98%)	13 (2%)	53	29

All (13) residues with a non-rotameric sidechain are listed below:

Mol	Chain	Res	Type
1	A	137	LEU
1	A	138	MET
1	A	143	THR
1	A	149	CYS
1	A	250	PHE
1	A	334	HIS
1	B	121	VAL
1	B	137	LEU

Continued on next page...

Continued from previous page...

Mol	Chain	Res	Type
1	B	149	CYS
1	B	211	GLU
1	B	361	VAL
1	B	373	ARG
1	B	394	LYS

Some sidechains can be flipped to improve hydrogen bonding and reduce clashes. There are no such sidechains identified.

5.3.3 RNA ⓘ

There are no RNA molecules in this entry.

5.4 Non-standard residues in protein, DNA, RNA chains ⓘ

There are no non-standard protein/DNA/RNA residues in this entry.

5.5 Carbohydrates ⓘ

There are no carbohydrates in this entry.

5.6 Ligand geometry ⓘ

Of 12 ligands modelled in this entry, 4 are monoatomic - leaving 8 for Mogul analysis.

In the following table, the Counts columns list the number of bonds (or angles) for which Mogul statistics could be retrieved, the number of bonds (or angles) that are observed in the model and the number of bonds (or angles) that are defined in the Chemical Component Dictionary. The Link column lists molecule types, if any, to which the group is linked. The Z score for a bond length (or angle) is the number of standard deviations the observed value is removed from the expected value. A bond length (or angle) with $|Z| > 2$ is considered an outlier worth inspection. RMSZ is the root-mean-square of all Z scores of the bond lengths (or angles).

Mol	Type	Chain	Res	Link	Bond lengths			Bond angles		
					Counts	RMSZ	$\# Z > 2$	Counts	RMSZ	$\# Z > 2$
4	EDO	A	406	-	3,3,3	0.61	0	2,2,2	0.22	0
4	EDO	A	407	-	3,3,3	0.59	0	2,2,2	0.20	0
4	EDO	A	403	-	3,3,3	0.49	0	2,2,2	0.04	0
3	ACT	A	402	-	1,3,3	1.22	0	0,3,3	0.00	-
8	ADN	B	404	-	18,21,21	0.96	1 (5%)	18,31,31	1.98	5 (27%)

Mol	Type	Chain	Res	Link	Bond lengths			Bond angles		
					Counts	RMSZ	# Z > 2	Counts	RMSZ	# Z > 2
7	PPK	B	401	5,6	11,12,12	3.75	7 (63%)	15,20,20	2.21	7 (46%)
2	PG4	A	401	-	12,12,12	0.74	0	11,11,11	1.09	1 (9%)
2	PG4	B	403	-	12,12,12	0.48	0	11,11,11	0.89	0

In the following table, the Chirals column lists the number of chiral outliers, the number of chiral centers analysed, the number of these observed in the model and the number defined in the Chemical Component Dictionary. Similar counts are reported in the Torsion and Rings columns. '-' means no outliers of that kind were identified.

Mol	Type	Chain	Res	Link	Chirals	Torsions	Rings
4	EDO	A	406	-	-	0/1/1/1	-
4	EDO	A	407	-	-	1/1/1/1	-
4	EDO	A	403	-	-	1/1/1/1	-
8	ADN	B	404	-	-	0/2/22/22	0/3/3/3
7	PPK	B	401	5,6	-	3/8/12/12	-
2	PG4	A	401	-	-	2/10/10/10	-
2	PG4	B	403	-	-	6/10/10/10	-

All (8) bond length outliers are listed below:

Mol	Chain	Res	Type	Atoms	Z	Observed(Å)	Ideal(Å)
7	B	401	PPK	PG-O3G	7.40	1.57	1.46
7	B	401	PPK	PG-N3B	6.77	1.81	1.63
7	B	401	PPK	PB-N3B	3.70	1.73	1.63
7	B	401	PPK	PG-O1G	-3.36	1.47	1.56
7	B	401	PPK	PB-O3A	2.92	1.62	1.59
7	B	401	PPK	PG-O2G	2.73	1.64	1.56
7	B	401	PPK	PA-O4A	-2.71	1.41	1.50
8	B	404	ADN	C5-C4	2.11	1.46	1.40

All (13) bond angle outliers are listed below:

Mol	Chain	Res	Type	Atoms	Z	Observed(°)	Ideal(°)
7	B	401	PPK	O3G-PG-N3B	-4.75	104.77	111.77
8	B	404	ADN	N3-C2-N1	-4.75	121.26	128.68
2	A	401	PG4	C5-O3-C4	3.45	128.25	113.29
7	B	401	PPK	O2A-PA-O1A	3.28	120.18	107.64
8	B	404	ADN	C2-N1-C6	3.17	124.18	118.75
7	B	401	PPK	O2B-PB-N3B	3.09	116.32	111.77
8	B	404	ADN	C1'-N9-C4	-2.79	121.73	126.64
7	B	401	PPK	O2G-PG-O1G	2.75	114.97	107.64

Continued on next page...

Continued from previous page...

Mol	Chain	Res	Type	Atoms	Z	Observed(°)	Ideal(°)
7	B	401	PPK	PA-O3A-PB	-2.55	123.62	132.62
8	B	404	ADN	C4-C5-N7	-2.42	106.88	109.40
7	B	401	PPK	O1B-PB-O2B	-2.18	105.34	109.92
8	B	404	ADN	C3'-C2'-C1'	2.15	104.22	100.98
7	B	401	PPK	O1G-PG-O3G	2.15	118.84	113.45

There are no chirality outliers.

All (13) torsion outliers are listed below:

Mol	Chain	Res	Type	Atoms
7	B	401	PPK	PB-N3B-PG-O3G
2	B	403	PG4	O2-C3-C4-O3
2	B	403	PG4	O3-C5-C6-O4
2	A	401	PG4	O2-C3-C4-O3
2	B	403	PG4	O4-C7-C8-O5
4	A	407	EDO	O1-C1-C2-O2
4	A	403	EDO	O1-C1-C2-O2
2	B	403	PG4	C3-C4-O3-C5
2	B	403	PG4	C1-C2-O2-C3
2	B	403	PG4	C8-C7-O4-C6
7	B	401	PPK	PG-N3B-PB-O2B
2	A	401	PG4	C4-C3-O2-C2
7	B	401	PPK	PG-N3B-PB-O3A

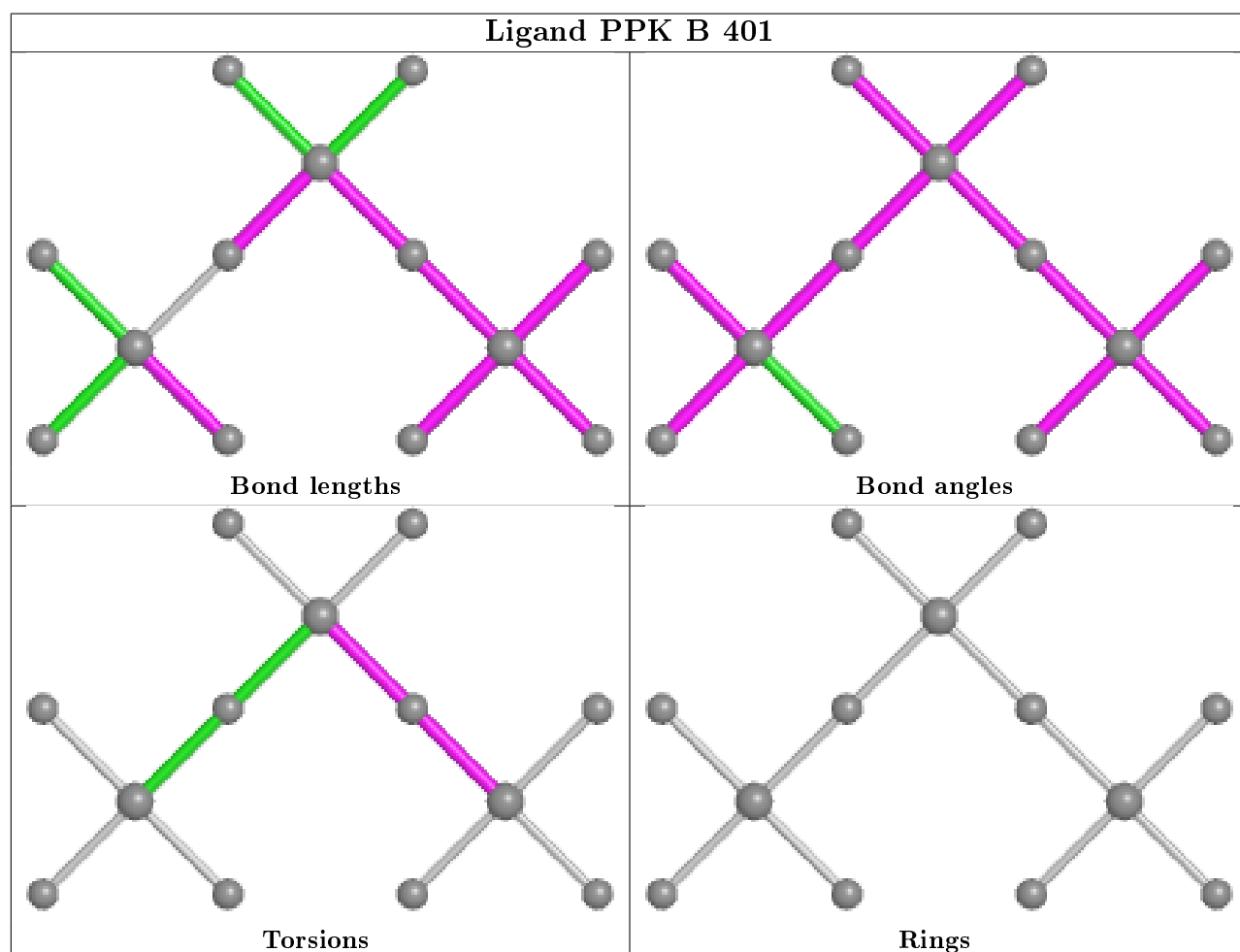
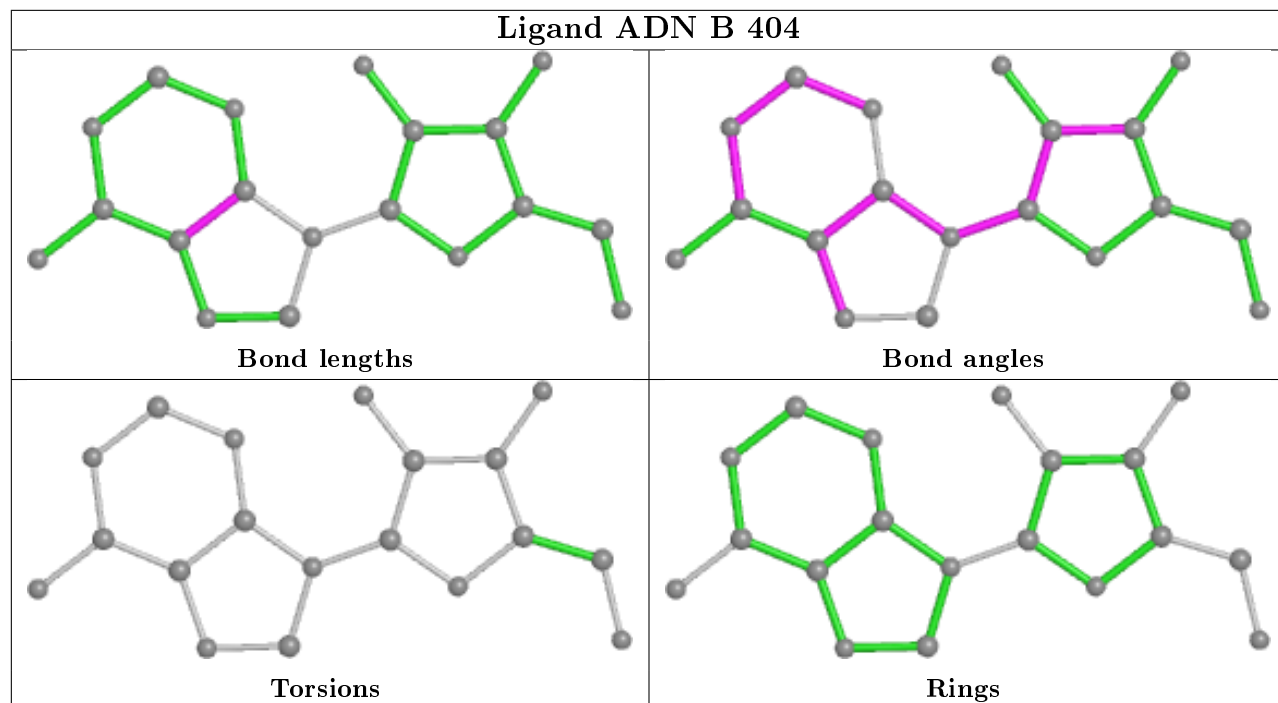
There are no ring outliers.

2 monomers are involved in 3 short contacts:

Mol	Chain	Res	Type	Clashes	Symm-Clashes
7	B	401	PPK	1	0
2	A	401	PG4	2	0

The following is a two-dimensional graphical depiction of Mogul quality analysis of bond lengths, bond angles, torsion angles, and ring geometry for all instances of the Ligand of Interest. In addition, ligands with molecular weight > 250 and outliers as shown on the validation Tables will also be included. For torsion angles, if less than 5% of the Mogul distribution of torsion angles is within 10 degrees of the torsion angle in question, then that torsion angle is considered an outlier. Any bond that is central to one or more torsion angles identified as an outlier by Mogul will be highlighted in the graph. For rings, the root-mean-square deviation (RMSD) between the ring in question and similar rings identified by Mogul is calculated over all ring torsion angles. If the average RMSD is greater than 60 degrees and the minimal RMSD between the ring in question and any Mogul-identified rings is also greater than 60 degrees, then that ring is considered an outlier. The outliers are highlighted in purple. The color gray indicates Mogul did not find sufficient

equivalents in the CSD to analyse the geometry.



5.7 Other polymers [i](#)

There are no such residues in this entry.

5.8 Polymer linkage issues [i](#)

There are no chain breaks in this entry.

6 Fit of model and data [i](#)

6.1 Protein, DNA and RNA chains [i](#)

In the following table, the column labelled ‘#RSRZ> 2’ contains the number (and percentage) of RSRZ outliers, followed by percent RSRZ outliers for the chain as percentile scores relative to all X-ray entries and entries of similar resolution. The OWAB column contains the minimum, median, 95th percentile and maximum values of the occupancy-weighted average B-factor per residue. The column labelled ‘Q< 0.9’ lists the number of (and percentage) of residues with an average occupancy less than 0.9.

Mol	Chain	Analysed	<RSRZ>	#RSRZ>2	OWAB(Å ²)	Q<0.9
1	A	380/395 (96%)	-0.45	3 (0%) 86 88	10, 16, 32, 51	3 (0%)
1	B	374/395 (94%)	-0.37	11 (2%) 51 52	10, 18, 37, 68	6 (1%)
All	All	754/790 (95%)	-0.41	14 (1%) 66 69	10, 17, 35, 68	9 (1%)

All (14) RSRZ outliers are listed below:

Mol	Chain	Res	Type	RSRZ
1	B	132	ALA	3.8
1	B	124	ASP	3.7
1	B	395	TYR	3.4
1	B	324	VAL	3.4
1	A	16	GLY	2.8
1	B	133	GLY	2.7
1	B	322	ILE	2.6
1	B	323	GLY	2.6
1	B	394	LYS	2.5
1	A	121	VAL	2.5
1	B	125	ARG	2.5
1	A	123	LEU	2.3
1	B	136	GLY	2.2
1	B	134	ASP	2.0

6.2 Non-standard residues in protein, DNA, RNA chains [i](#)

There are no non-standard protein/DNA/RNA residues in this entry.

6.3 Carbohydrates [i](#)

There are no carbohydrates in this entry.

6.4 Ligands

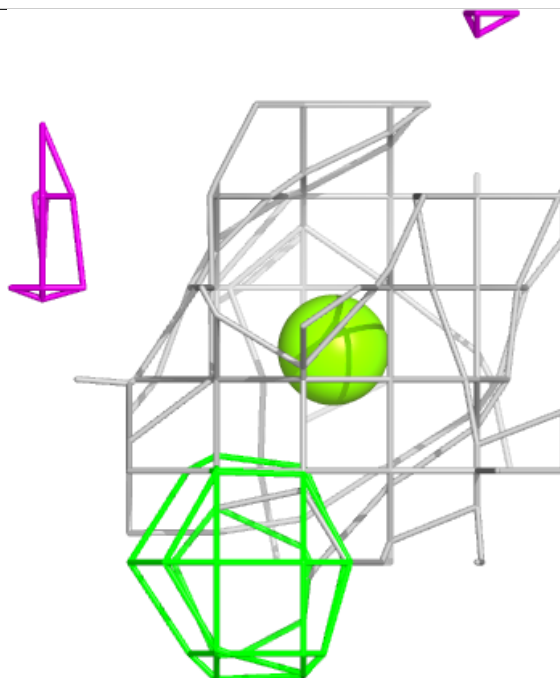
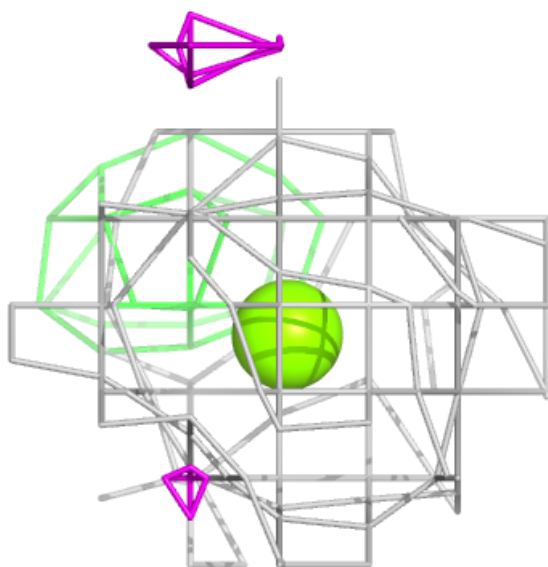
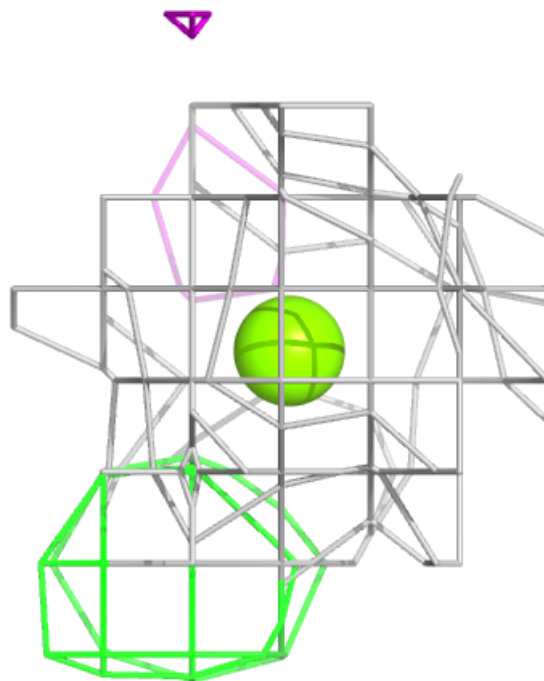
In the following table, the Atoms column lists the number of modelled atoms in the group and the number defined in the chemical component dictionary. The B-factors column lists the minimum, median, 95th percentile and maximum values of B factors of atoms in the group. The column labelled 'Q< 0.9' lists the number of atoms with occupancy less than 0.9.

Mol	Type	Chain	Res	Atoms	RSCC	RSR	B-factors(Å ²)	Q<0.9
6	MG	A	405	1/1	0.71	0.10	40,40,40,40	0
4	EDO	A	403	4/4	0.79	0.14	50,50,50,52	0
4	EDO	A	407	4/4	0.81	0.11	52,55,55,56	0
4	EDO	A	406	4/4	0.82	0.16	46,47,47,49	0
3	ACT	A	402	4/4	0.85	0.11	30,32,34,37	0
8	ADN	B	404	19/19	0.89	0.12	12,16,18,19	19
2	PG4	B	403	13/13	0.90	0.12	30,34,41,45	0
2	PG4	A	401	13/13	0.92	0.09	19,22,38,44	0
5	K	A	404	1/1	0.93	0.16	49,49,49,49	0
7	PPK	B	401	13/13	0.96	0.12	9,10,12,14	13
5	K	B	405	1/1	0.99	0.03	22,22,22,22	0
6	MG	B	402	1/1	0.99	0.06	12,12,12,12	1

The following is a graphical depiction of the model fit to experimental electron density of all instances of the Ligand of Interest. In addition, ligands with molecular weight > 250 and outliers as shown on the geometry validation Tables will also be included. Each fit is shown from different orientation to approximate a three-dimensional view.

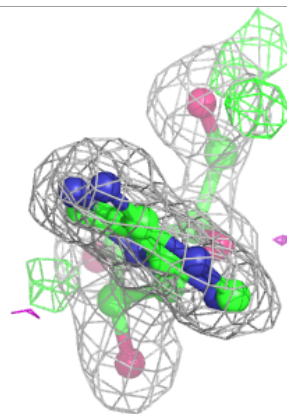
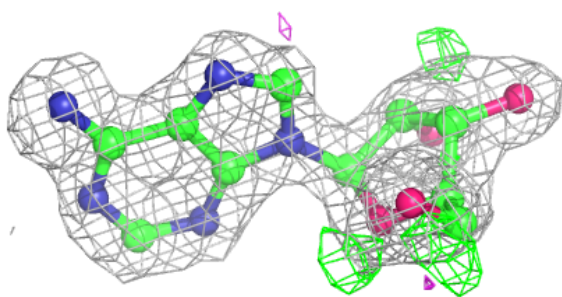
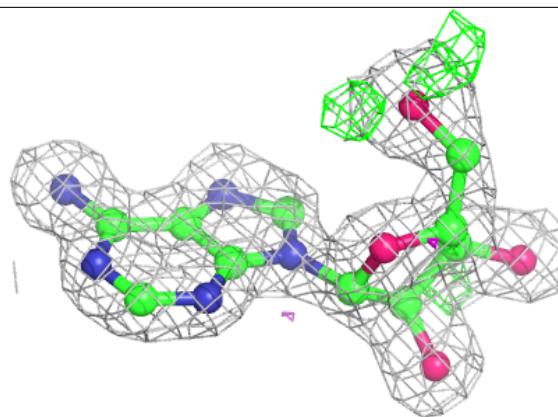
Electron density around MG A 405:

$2mF_o-DF_c$ (at 0.7 rmsd) in gray
 mF_o-DF_c (at 3 rmsd) in purple (negative)
and green (positive)



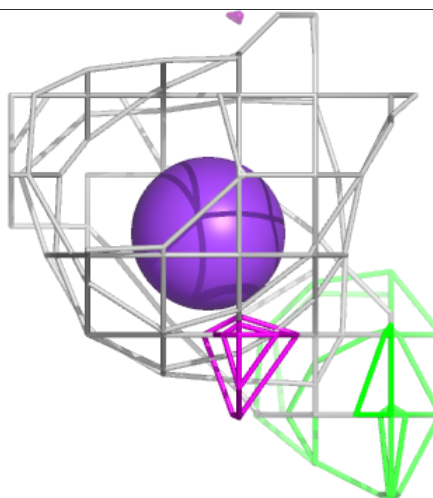
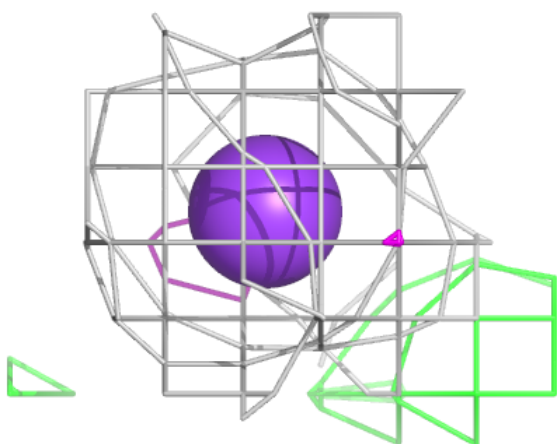
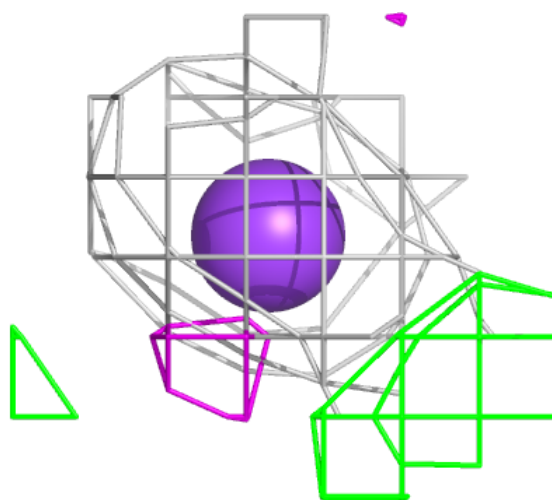
Electron density around ADN B 404:

$2mF_o-DF_c$ (at 0.7 rmsd) in gray
 mF_o-DF_c (at 3 rmsd) in purple (negative)
and green (positive)



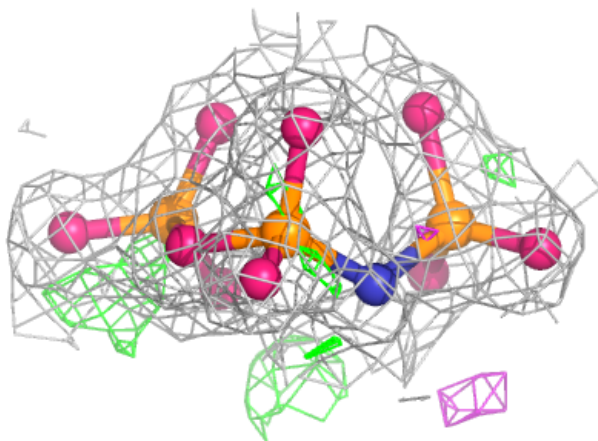
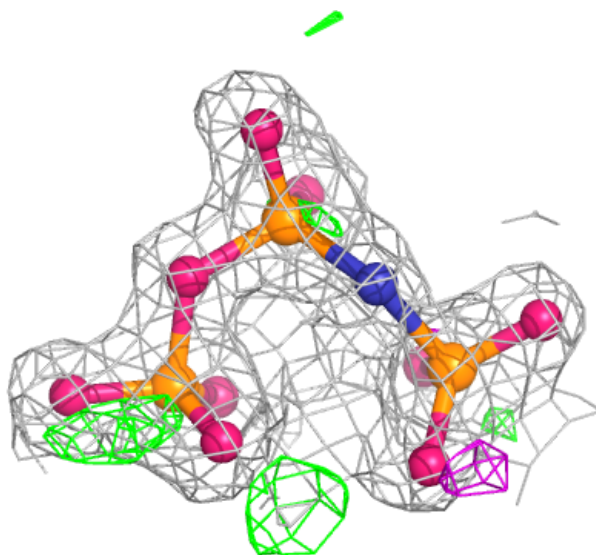
Electron density around K A 404:

$2mF_o-DF_c$ (at 0.7 rmsd) in gray
 mF_o-DF_c (at 3 rmsd) in purple (negative)
and green (positive)



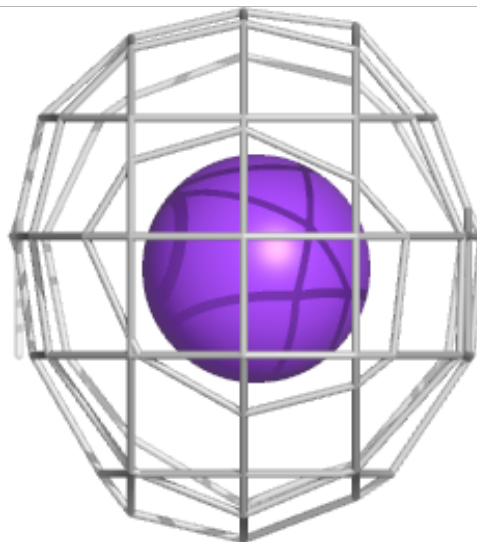
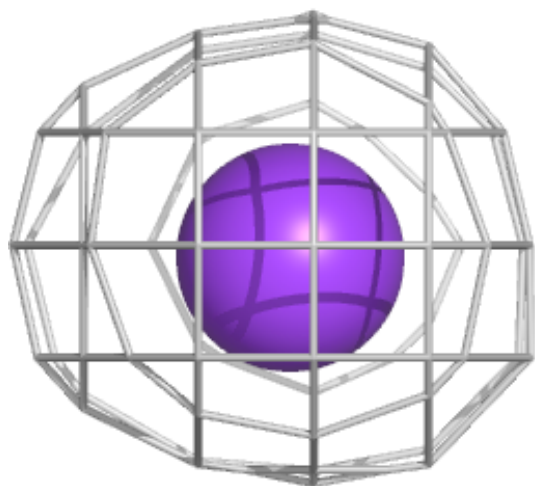
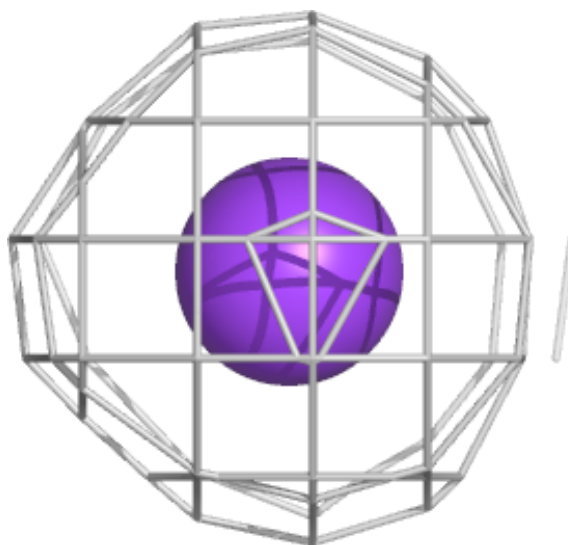
Electron density around PPK B 401:

$2mF_o-DF_c$ (at 0.7 rmsd) in gray
 mF_o-DF_c (at 3 rmsd) in purple (negative)
and green (positive)



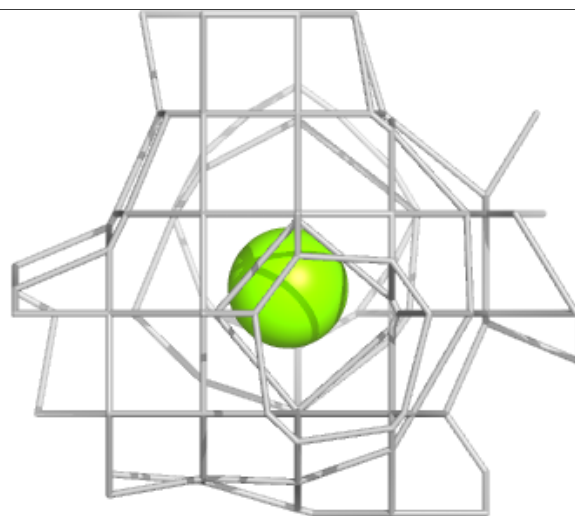
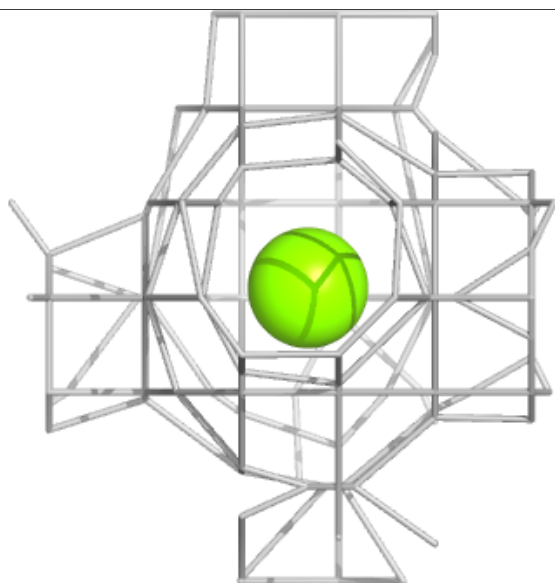
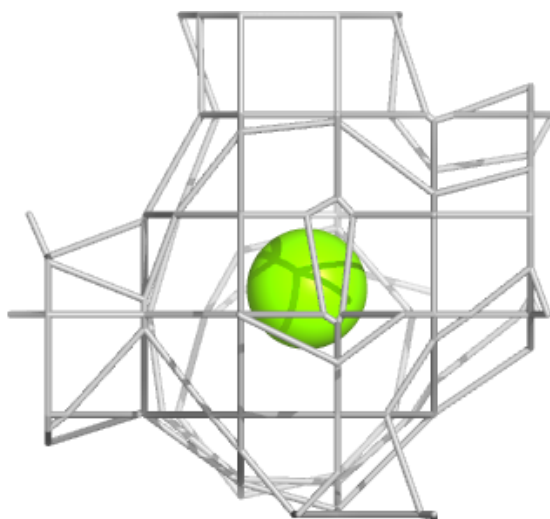
Electron density around K B 405:

$2mF_o-DF_c$ (at 0.7 rmsd) in gray
 mF_o-DF_c (at 3 rmsd) in purple (negative)
and green (positive)



Electron density around MG B 402:

$2mF_o-DF_c$ (at 0.7 rmsd) in gray
 mF_o-DF_c (at 3 rmsd) in purple (negative)
and green (positive)



6.5 Other polymers [i](#)

There are no such residues in this entry.