



Full wwPDB X-ray Structure Validation Report ⓘ

May 22, 2020 – 10:58 pm BST

PDB ID : 1FD0
Title : ISOTYPE SELECTIVITY OF THE HUMAN RETINOIC ACID NUCLEAR RECEPTOR HRAR: THE COMPLEX WITH THE RARGAMMA-SELECTIVE RETINOID SR11254
Authors : Klaholz, B.P.; Moras, D.; Structural Proteomics in Europe (SPINE)
Deposited on : 2000-07-19
Resolution : 1.38 Å(reported)

This is a Full wwPDB X-ray Structure Validation Report for a publicly released PDB entry.

We welcome your comments at validation@mail.wwpdb.org

A user guide is available at

<https://www.wwpdb.org/validation/2017/XrayValidationReportHelp>

with specific help available everywhere you see the ⓘ symbol.

The following versions of software and data (see [references ⓘ](#)) were used in the production of this report:

MolProbity : 4.02b-467
Mogul : 1.8.5 (274361), CSD as541be (2020)
Xtriage (Phenix) : 1.13
EDS : 2.11
buster-report : 1.1.7 (2018)
Percentile statistics : 20191225.v01 (using entries in the PDB archive December 25th 2019)
Refmac : 5.8.0158
CCP4 : 7.0.044 (Gargrove)
Ideal geometry (proteins) : Engh & Huber (2001)
Ideal geometry (DNA, RNA) : Parkinson et al. (1996)
Validation Pipeline (wwPDB-VP) : 2.11

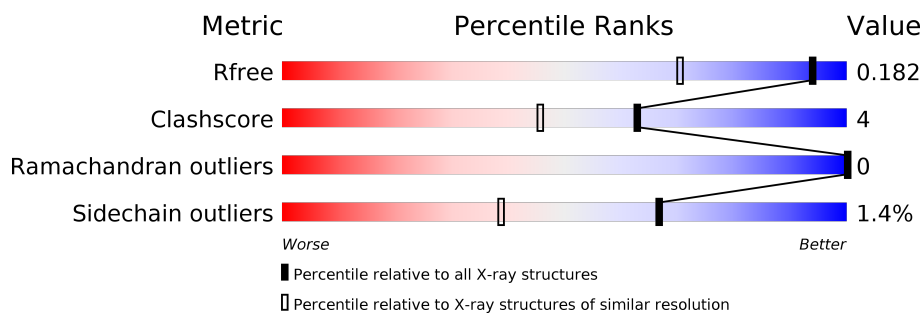
1 Overall quality at a glance

The following experimental techniques were used to determine the structure:

X-RAY DIFFRACTION


The reported resolution of this entry is 1.38 Å.

Percentile scores (ranging between 0-100) for global validation metrics of the entry are shown in the following graphic. The table shows the number of entries on which the scores are based.



Metric	Whole archive (#Entries)	Similar resolution (#Entries, resolution range(Å))
R_{free}	130704	2907 (1.40-1.36)
Clashscore	141614	3037 (1.40-1.36)
Ramachandran outliers	138981	2970 (1.40-1.36)
Sidechain outliers	138945	2969 (1.40-1.36)

The table below summarises the geometric issues observed across the polymeric chains and their fit to the electron density. The red, orange, yellow and green segments on the lower bar indicate the fraction of residues that contain outliers for ≥ 3 , 2, 1 and 0 types of geometric quality criteria respectively. A grey segment represents the fraction of residues that are not modelled. The numeric value for each fraction is indicated below the corresponding segment, with a dot representing fractions $\leq 5\%$.

Mol	Chain	Length	Quality of chain
1	A	235	

2 Entry composition [i](#)

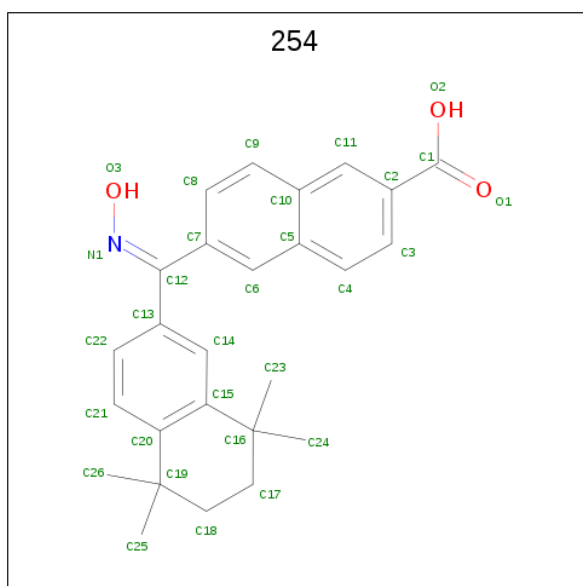
There are 4 unique types of molecules in this entry. The entry contains 2351 atoms, of which 0 are hydrogens and 0 are deuteriums.

In the tables below, the ZeroOcc column contains the number of atoms modelled with zero occupancy, the AltConf column contains the number of residues with at least one atom in alternate conformation and the Trace column contains the number of residues modelled with at most 2 atoms.

- Molecule 1 is a protein called RETINOIC ACID RECEPTOR GAMMA-1.

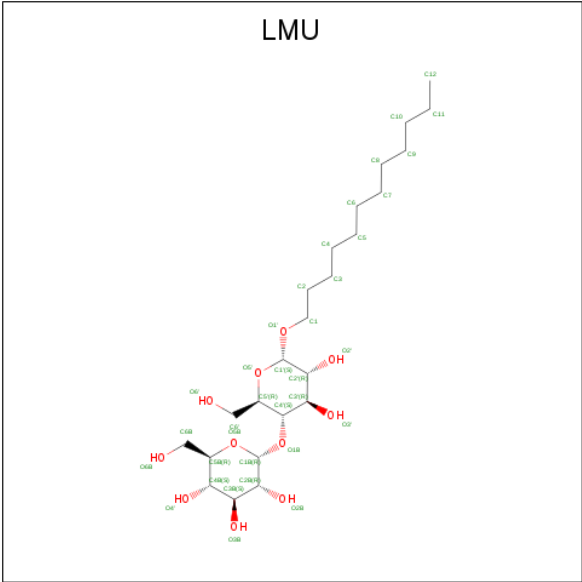
Mol	Chain	Residues	Atoms					ZeroOcc	AltConf	Trace
			Total	C	N	O	S			
1	A	235	1944	1238	319	364	23	0	23	0

- Molecule 2 is 6-[HYDROXYIMINO-(5,5,8,8-TETRAMETHYL-5,6,7,8-TETRAHYDRO-NAPHTALEN-2-YL)-METHYL]-NAPHTALENE-2-CARBOXYLIC ACID (three-letter code: 254) (formula: $C_{26}H_{27}NO_3$).



Mol	Chain	Residues	Atoms				ZeroOcc	AltConf
			Total	C	N	O		
2	A	1	41	35	2	4	0	1

- Molecule 3 is DODECYL-ALPHA-D-MALTOSIDE (three-letter code: LMU) (formula: $C_{24}H_{46}O_{11}$).



Mol	Chain	Residues	Atoms			ZeroOcc	AltConf
3	A	1	Total	C	O	0	0
			35	24	11		

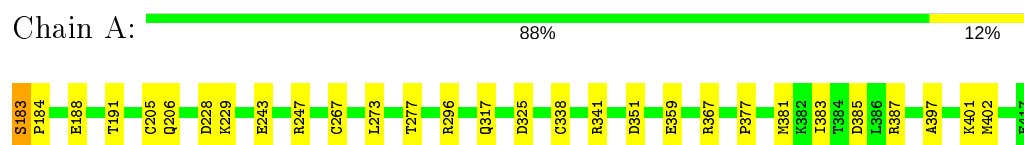
- Molecule 4 is water.

Mol	Chain	Residues	Atoms		ZeroOcc	AltConf
4	A	331	Total	O	0	0
			331	331		

3 Residue-property plots [i](#)

These plots are drawn for all protein, RNA and DNA chains in the entry. The first graphic for a chain summarises the proportions of the various outlier classes displayed in the second graphic. The second graphic shows the sequence view annotated by issues in geometry. Residues are color-coded according to the number of geometric quality criteria for which they contain at least one outlier: green = 0, yellow = 1, orange = 2 and red = 3 or more. Stretches of 2 or more consecutive residues without any outlier are shown as a green connector. Residues present in the sample, but not in the model, are shown in grey.

- Molecule 1: RETINOIC ACID RECEPTOR GAMMA-1



4 Data and refinement statistics

Property	Value	Source
Space group	P 41 21 2	Depositor
Cell constants a, b, c, α , β , γ	59.79 Å 59.79 Å 155.69 Å 90.00° 90.00° 90.00°	Depositor
Resolution (Å)	6.00 – 1.38 19.77 – 1.38	Depositor EDS
% Data completeness (in resolution range)	99.9 (6.00-1.38) 96.0 (19.77-1.38)	Depositor EDS
R_{merge}	0.04	Depositor
R_{sym}	(Not available)	Depositor
$\langle I/\sigma(I) \rangle$ ¹	3.51 (at 1.38 Å)	Xtriage
Refinement program	SHELXL-97, CNS	Depositor
R, R_{free}	0.130 , 0.158 0.184 , 0.182	Depositor DCC
R_{free} test set	2947 reflections (5.00%)	wwPDB-VP
Wilson B-factor (Å ²)	18.3	Xtriage
Anisotropy	0.075	Xtriage
Bulk solvent k_{sol} (e/Å ³), B_{sol} (Å ²)	0.36 , 58.9	EDS
L-test for twinning ²	$\langle L \rangle = 0.50$, $\langle L^2 \rangle = 0.33$	Xtriage
Estimated twinning fraction	No twinning to report.	Xtriage
F_o, F_c correlation	0.97	EDS
Total number of atoms	2351	wwPDB-VP
Average B, all atoms (Å ²)	25.0	wwPDB-VP

Xtriage's analysis on translational NCS is as follows: *The largest off-origin peak in the Patterson function is 6.42% of the height of the origin peak. No significant pseudotranslation is detected.*

¹Intensities estimated from amplitudes.

²Theoretical values of $\langle |L| \rangle$, $\langle L^2 \rangle$ for acentric reflections are 0.5, 0.333 respectively for untwinned datasets, and 0.375, 0.2 for perfectly twinned datasets.

5 Model quality ⓘ

5.1 Standard geometry ⓘ

Bond lengths and bond angles in the following residue types are not validated in this section: LMU, 254

The Z score for a bond length (or angle) is the number of standard deviations the observed value is removed from the expected value. A bond length (or angle) with $|Z| > 5$ is considered an outlier worth inspection. RMSZ is the root-mean-square of all Z scores of the bond lengths (or angles).

Mol	Chain	Bond lengths		Bond angles	
		RMSZ	# Z >5	RMSZ	# Z >5
1	A	0.64	0/2072	1.22	17/2789 (0.6%)

There are no bond length outliers.

All (17) bond angle outliers are listed below:

Mol	Chain	Res	Type	Atoms	Z	Observed(°)	Ideal(°)
1	A	247	ARG	NE-CZ-NH2	-14.05	113.27	120.30
1	A	183	SER	N-CA-CB	8.66	123.49	110.50
1	A	296	ARG	NE-CZ-NH1	8.15	124.38	120.30
1	A	341	ARG	NE-CZ-NH1	6.99	123.80	120.30
1	A	228	ASP	CB-CG-OD1	6.89	124.50	118.30
1	A	351	ASP	CB-CG-OD2	-6.81	112.17	118.30
1	A	325	ASP	CB-CG-OD2	-6.32	112.61	118.30
1	A	387	ARG	NE-CZ-NH2	-5.86	117.37	120.30
1	A	247	ARG	CD-NE-CZ	-5.85	115.42	123.60
1	A	385	ASP	CB-CG-OD1	-5.67	113.19	118.30
1	A	402	MET	CA-CB-CG	5.56	122.76	113.30
1	A	325	ASP	CB-CG-OD1	5.56	123.30	118.30
1	A	188	GLU	OE1-CD-OE2	-5.46	116.75	123.30
1	A	228	ASP	CB-CG-OD2	-5.37	113.47	118.30
1	A	341	ARG	NE-CZ-NH2	-5.27	117.67	120.30
1	A	385	ASP	CB-CG-OD2	5.09	122.88	118.30
1	A	247	ARG	NH1-CZ-NH2	5.01	124.91	119.40

There are no chirality outliers.

There are no planarity outliers.

5.2 Too-close contacts ⓘ

In the following table, the Non-H and H(model) columns list the number of non-hydrogen atoms and hydrogen atoms in the chain respectively. The H(added) column lists the number of hydrogen atoms added and optimized by MolProbity. The Clashes column lists the number of clashes within the asymmetric unit, whereas Symm-Clashes lists symmetry related clashes.

Mol	Chain	Non-H	H(model)	H(added)	Clashes	Symm-Clashes
1	A	1944	0	1997	18	0
2	A	41	0	14	0	0
3	A	35	0	46	1	0
4	A	331	0	0	12	0
All	All	2351	0	2057	18	0

The all-atom clashscore is defined as the number of clashes found per 1000 atoms (including hydrogen atoms). The all-atom clashscore for this structure is 4.

All (18) close contacts within the same asymmetric unit are listed below, sorted by their clash magnitude.

Atom-1	Atom-2	Interatomic distance (Å)	Clash overlap (Å)
1:A:359[A]:GLU:OE1	4:A:706:HOH:O	1.70	1.08
1:A:191[B]:THR:HG22	4:A:552:HOH:O	1.55	1.05
1:A:273:LEU:O	1:A:277[A]:THR:HG23	1.92	0.69
1:A:243[B]:GLU:HG3	4:A:515:HOH:O	1.93	0.67
1:A:401:LYS:HE3	4:A:675:HOH:O	1.94	0.66
1:A:397:ALA:O	1:A:401:LYS:HG3	2.03	0.59
1:A:184:PRO:HD2	4:A:726:HOH:O	2.04	0.58
1:A:359[A]:GLU:CD	4:A:706:HOH:O	2.29	0.56
1:A:367:ARG:HD3	4:A:674:HOH:O	2.08	0.54
1:A:267[B]:CYS:SG	3:A:451:LMU:H122	2.54	0.48
1:A:229[A]:LYS:HE2	4:A:758:HOH:O	2.13	0.47
1:A:317:GLN:NE2	1:A:317:GLN:HA	2.25	0.47
1:A:383:ILE:HG23	4:A:663:HOH:O	2.15	0.46
1:A:183:SER:N	4:A:799:HOH:O	2.49	0.46
1:A:191[A]:THR:HG21	4:A:501:HOH:O	2.15	0.45
1:A:401:LYS:NZ	4:A:657:HOH:O	2.50	0.42
1:A:377:PRO:O	1:A:381[A]:MET:HG3	2.20	0.41

There are no symmetry-related clashes.

5.3 Torsion angles

5.3.1 Protein backbone

In the following table, the Percentiles column shows the percent Ramachandran outliers of the chain as a percentile score with respect to all X-ray entries followed by that with respect to entries of similar resolution.

The Analysed column shows the number of residues for which the backbone conformation was analysed, and the total number of residues.

Mol	Chain	Analysed	Favoured	Allowed	Outliers	Percentiles	
1	A	256/235 (109%)	252 (98%)	4 (2%)	0	100	100

There are no Ramachandran outliers to report.

5.3.2 Protein sidechains

In the following table, the Percentiles column shows the percent sidechain outliers of the chain as a percentile score with respect to all X-ray entries followed by that with respect to entries of similar resolution.

The Analysed column shows the number of residues for which the sidechain conformation was analysed, and the total number of residues.

Mol	Chain	Analysed	Rotameric	Outliers	Percentiles	
1	A	231/207 (112%)	227 (98%)	4 (2%)	60	30

All (4) residues with a non-rotameric sidechain are listed below:

Mol	Chain	Res	Type
1	A	205	CYS
1	A	206	GLN
1	A	338[A]	CYS
1	A	338[B]	CYS

Some sidechains can be flipped to improve hydrogen bonding and reduce clashes. All (1) such sidechains are listed below:

Mol	Chain	Res	Type
1	A	198	GLN

5.3.3 RNA ⓘ

There are no RNA molecules in this entry.

5.4 Non-standard residues in protein, DNA, RNA chains ⓘ

There are no non-standard protein/DNA/RNA residues in this entry.

5.5 Carbohydrates ⓘ

There are no carbohydrates in this entry.

5.6 Ligand geometry ⓘ

3 ligands are modelled in this entry.

In the following table, the Counts columns list the number of bonds (or angles) for which Mogul statistics could be retrieved, the number of bonds (or angles) that are observed in the model and the number of bonds (or angles) that are defined in the Chemical Component Dictionary. The Link column lists molecule types, if any, to which the group is linked. The Z score for a bond length (or angle) is the number of standard deviations the observed value is removed from the expected value. A bond length (or angle) with $|Z| > 2$ is considered an outlier worth inspection. RMSZ is the root-mean-square of all Z scores of the bond lengths (or angles).

Mol	Type	Chain	Res	Link	Bond lengths			Bond angles		
					Counts	RMSZ	$\# Z > 2$	Counts	RMSZ	$\# Z > 2$
2	254	A	450[B]	-	31,33,33	1.10	3 (9%)	48,51,51	1.48	8 (16%)
2	254	A	450[A]	-	31,33,33	1.16	4 (12%)	48,51,51	1.71	8 (16%)
3	LMU	A	451	-	36,36,36	0.65	0	47,47,47	1.57	6 (12%)

In the following table, the Chirals column lists the number of chiral outliers, the number of chiral centers analysed, the number of these observed in the model and the number defined in the Chemical Component Dictionary. Similar counts are reported in the Torsion and Rings columns. '-' means no outliers of that kind were identified.

Mol	Type	Chain	Res	Link	Chirals	Torsions	Rings
2	254	A	450[B]	-	-	0/10/33/33	0/4/4/4
2	254	A	450[A]	-	-	0/10/33/33	0/4/4/4
3	LMU	A	451	-	-	5/21/61/61	0/2/2/2

All (7) bond length outliers are listed below:

Mol	Chain	Res	Type	Atoms	Z	Observed(Å)	Ideal(Å)
2	A	450[A]	254	C13-C12	-3.62	1.44	1.49
2	A	450[B]	254	C13-C12	-3.22	1.44	1.49
2	A	450[B]	254	O3-N1	-2.60	1.32	1.40
2	A	450[A]	254	C22-C21	-2.25	1.34	1.38
2	A	450[B]	254	C3-C2	2.15	1.43	1.39
2	A	450[A]	254	C3-C2	2.15	1.43	1.39
2	A	450[A]	254	C14-C13	2.02	1.42	1.39

All (22) bond angle outliers are listed below:

Mol	Chain	Res	Type	Atoms	Z	Observed(°)	Ideal(°)
3	A	451	LMU	C1-O1'-C1'	-5.10	105.38	113.84
2	A	450[A]	254	C9-C8-C7	4.90	126.32	120.79
2	A	450[A]	254	C22-C13-C12	4.75	126.60	120.64
2	A	450[A]	254	C6-C7-C12	4.15	127.27	120.37
2	A	450[A]	254	C8-C7-C6	-4.08	114.37	119.23
3	A	451	LMU	C4B-C3B-C2B	-3.79	104.22	110.82
2	A	450[B]	254	C22-C13-C14	-3.76	114.79	119.24
3	A	451	LMU	C2'-C3'-C4'	3.54	117.75	109.68
2	A	450[B]	254	C13-C12-C7	3.37	123.77	118.46
2	A	450[A]	254	C14-C13-C12	-3.28	114.90	120.38
3	A	451	LMU	C1'-O5'-C5'	3.16	119.90	113.69
2	A	450[B]	254	C21-C22-C13	3.14	124.43	120.78
2	A	450[B]	254	C14-C13-C12	3.07	125.51	120.38
2	A	450[B]	254	C9-C8-C7	3.04	124.22	120.79
3	A	451	LMU	O4'-C4B-C3B	-2.95	103.53	110.35
3	A	451	LMU	O6B-C6B-C5B	-2.60	102.37	111.29
2	A	450[A]	254	C13-C12-C7	2.51	122.41	118.46
2	A	450[B]	254	C8-C9-C10	-2.50	116.95	120.82
2	A	450[B]	254	C3-C2-C1	-2.38	117.17	120.37
2	A	450[A]	254	C3-C2-C1	-2.38	117.17	120.37
2	A	450[B]	254	C21-C20-C15	-2.33	117.16	119.61
2	A	450[A]	254	C14-C15-C20	-2.02	117.41	119.76

There are no chirality outliers.

All (5) torsion outliers are listed below:

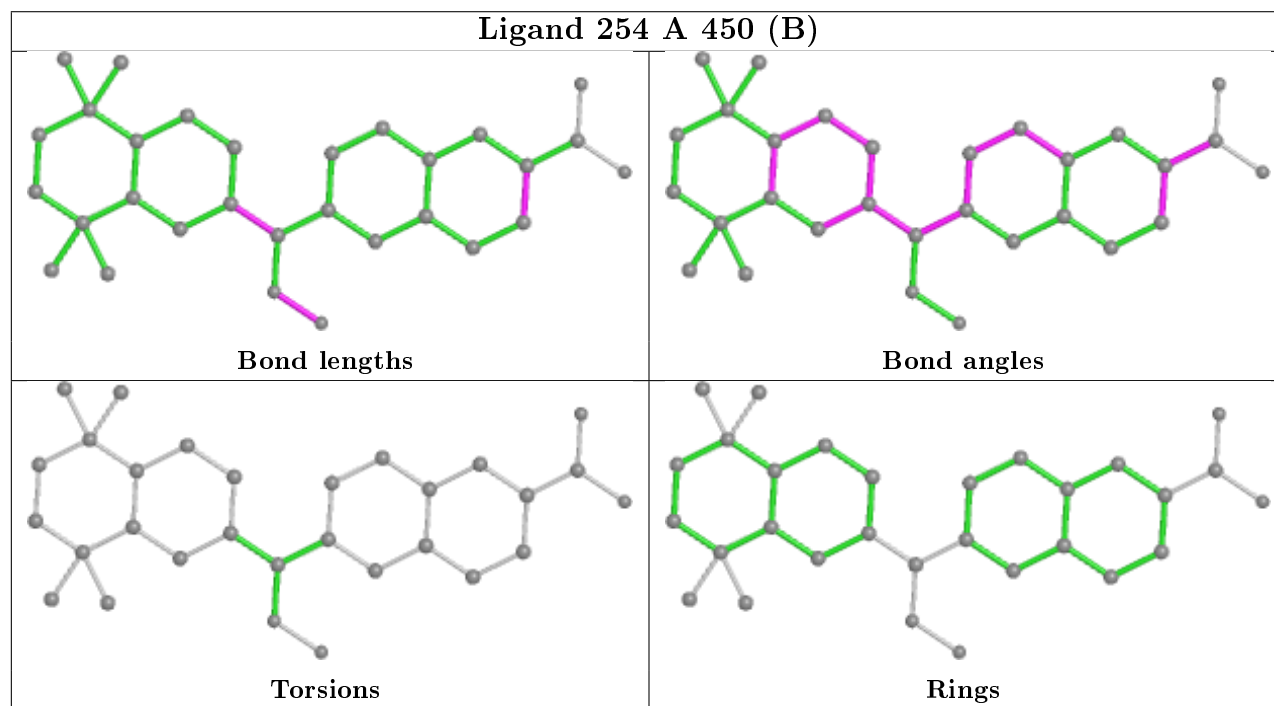
Mol	Chain	Res	Type	Atoms
3	A	451	LMU	O1'-C1-C2-C3
3	A	451	LMU	C5-C6-C7-C8
3	A	451	LMU	C6-C7-C8-C9
3	A	451	LMU	C9-C10-C11-C12
3	A	451	LMU	C1-C2-C3-C4

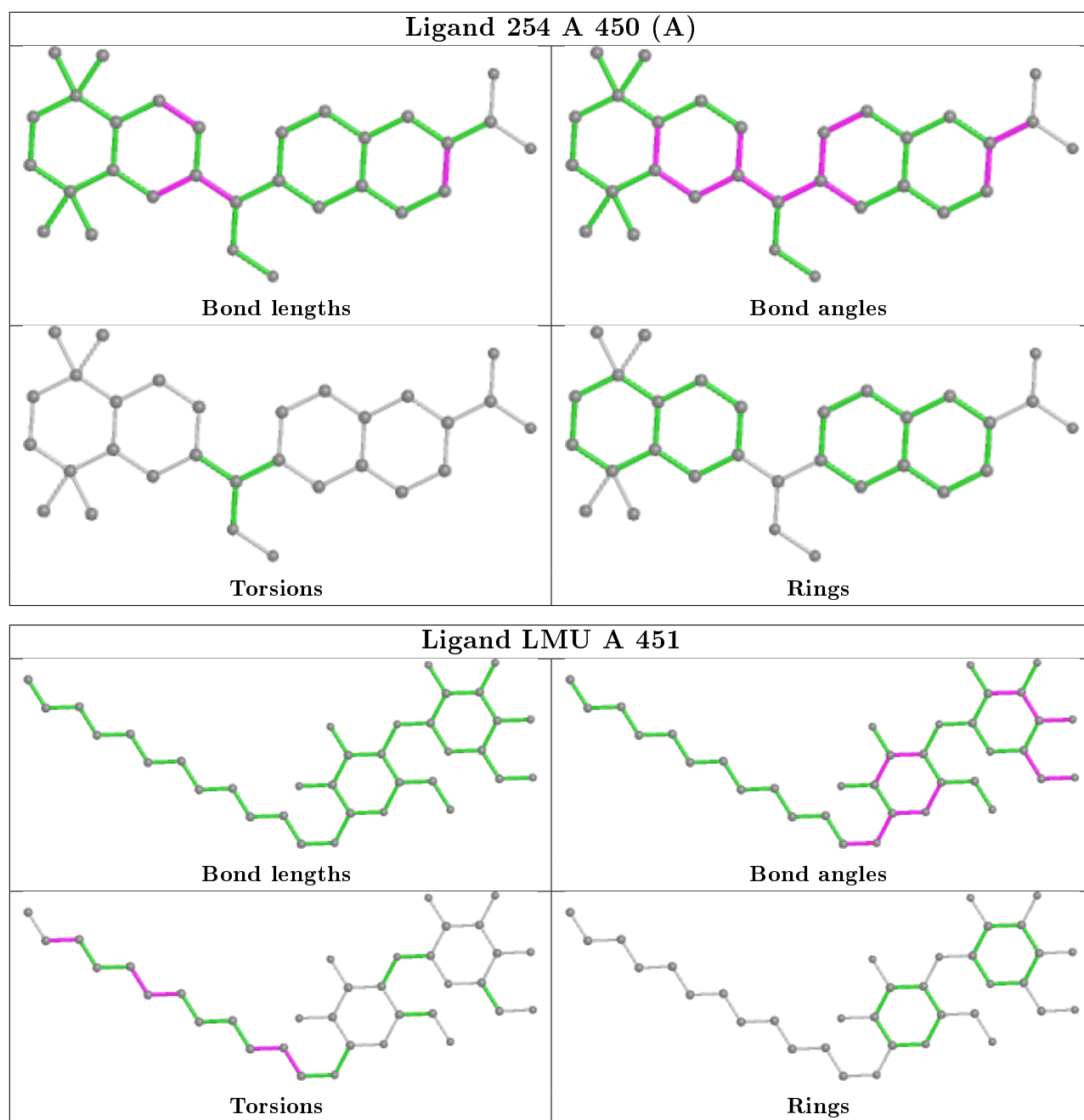
There are no ring outliers.

1 monomer is involved in 1 short contact:

Mol	Chain	Res	Type	Clashes	Symm-Clashes
3	A	451	LMU	1	0

The following is a two-dimensional graphical depiction of Mogul quality analysis of bond lengths, bond angles, torsion angles, and ring geometry for all instances of the Ligand of Interest. In addition, ligands with molecular weight > 250 and outliers as shown on the validation Tables will also be included. For torsion angles, if less than 5% of the Mogul distribution of torsion angles is within 10 degrees of the torsion angle in question, then that torsion angle is considered an outlier. Any bond that is central to one or more torsion angles identified as an outlier by Mogul will be highlighted in the graph. For rings, the root-mean-square deviation (RMSD) between the ring in question and similar rings identified by Mogul is calculated over all ring torsion angles. If the average RMSD is greater than 60 degrees and the minimal RMSD between the ring in question and any Mogul-identified rings is also greater than 60 degrees, then that ring is considered an outlier. The outliers are highlighted in purple. The color gray indicates Mogul did not find sufficient equivalents in the CSD to analyse the geometry.





5.7 Other polymers [i](#)

There are no such residues in this entry.

5.8 Polymer linkage issues [i](#)

There are no chain breaks in this entry.

6 Fit of model and data ⓘ

6.1 Protein, DNA and RNA chains ⓘ

Unable to reproduce the depositors R factor - this section is therefore empty.

6.2 Non-standard residues in protein, DNA, RNA chains ⓘ

Unable to reproduce the depositors R factor - this section is therefore empty.

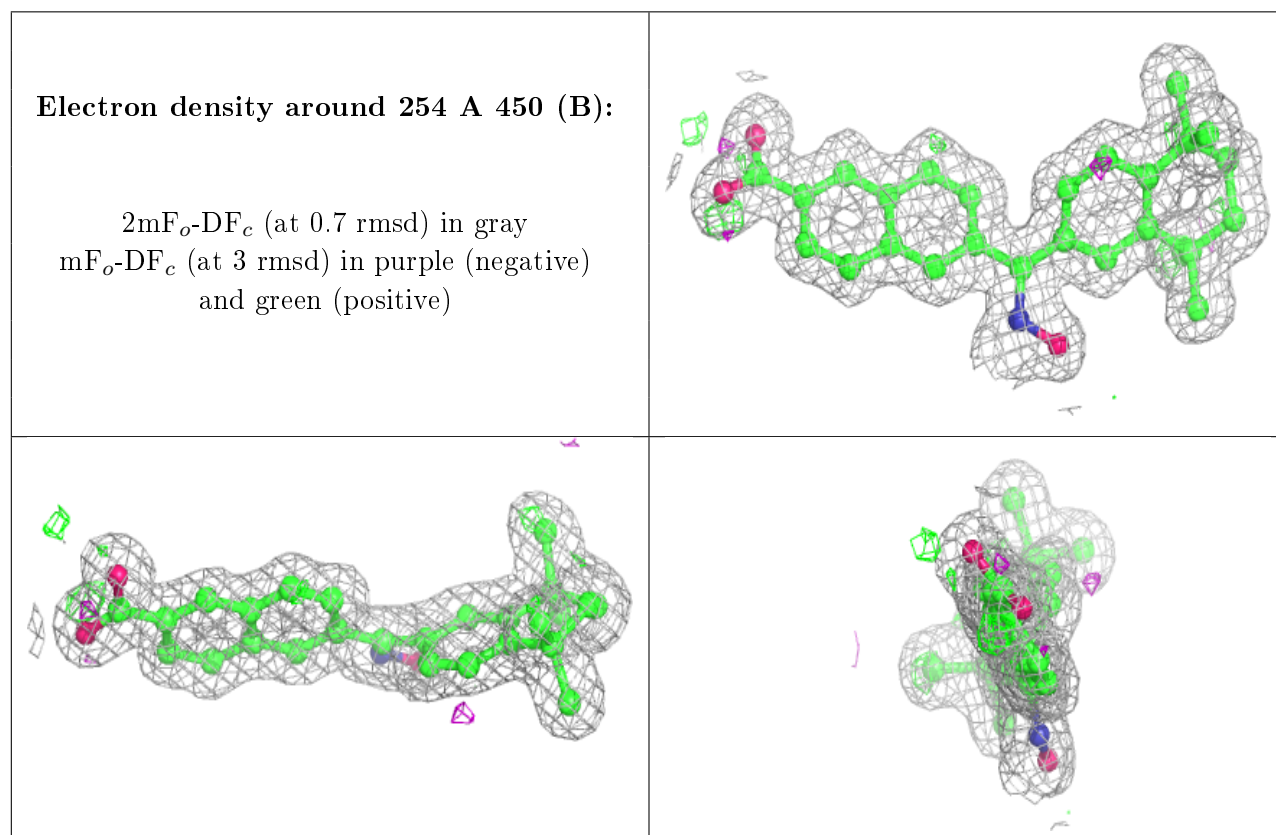
6.3 Carbohydrates ⓘ

Unable to reproduce the depositors R factor - this section is therefore empty.

6.4 Ligands ⓘ

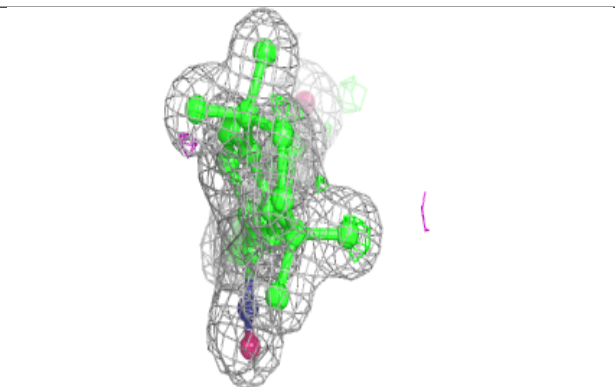
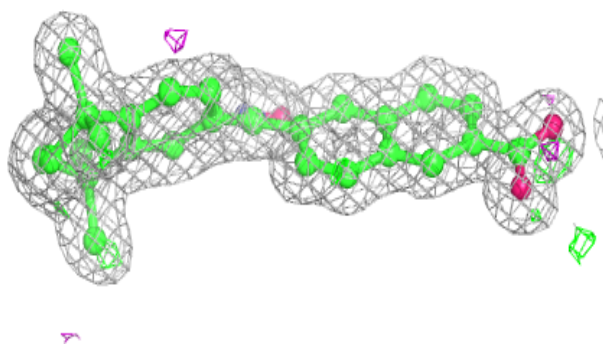
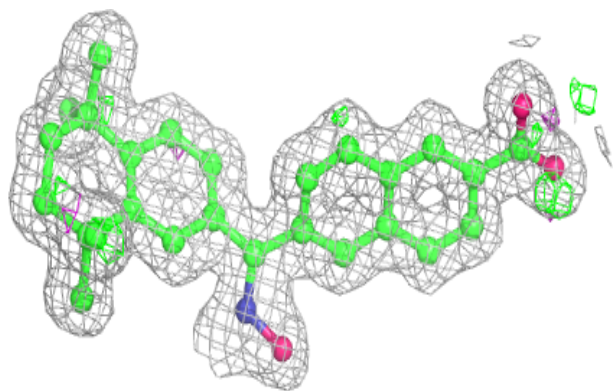
Unable to reproduce the depositors R factor - this section is therefore empty.

The following is a graphical depiction of the model fit to experimental electron density of all instances of the Ligand of Interest. In addition, ligands with molecular weight > 250 and outliers as shown on the geometry validation Tables will also be included. Each fit is shown from different orientation to approximate a three-dimensional view.

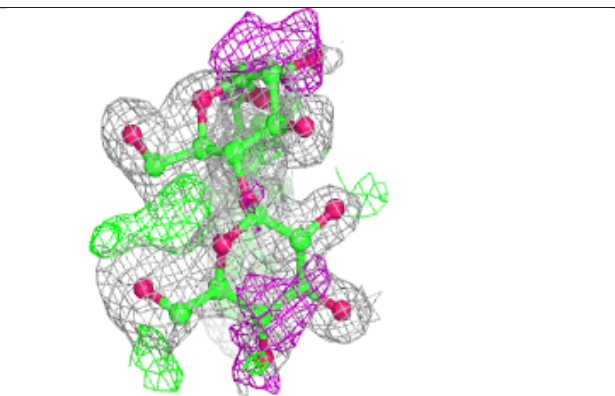
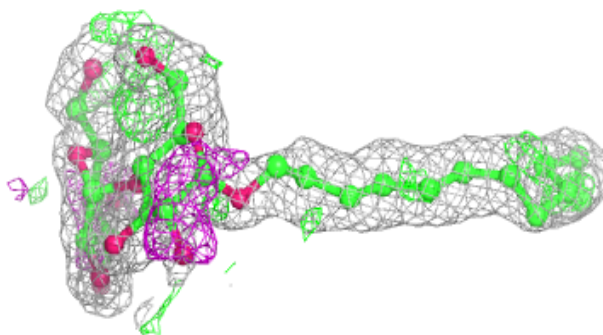
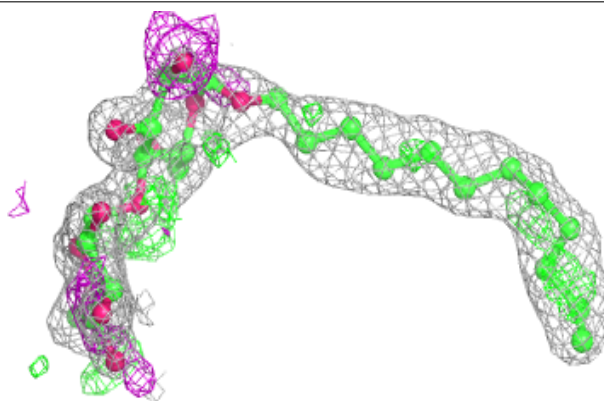


Electron density around 254 A 450 (A):

$2mF_o-DF_c$ (at 0.7 rmsd) in gray
 mF_o-DF_c (at 3 rmsd) in purple (negative)
and green (positive)

**Electron density around LMU A 451:**

$2mF_o-DF_c$ (at 0.7 rmsd) in gray
 mF_o-DF_c (at 3 rmsd) in purple (negative)
and green (positive)



6.5 Other polymers

Unable to reproduce the depositors R factor - this section is therefore empty.