



Full wwPDB X-ray Structure Validation Report ⓘ

Mar 10, 2022 – 12:30 PM JST

PDB ID : 7FDW
Title : Crystal structure of pepsin cleaved lactoferrin C-lobe at 2.28 Å resolution
Authors : Singh, P.K.; Singh, J.; Maurya, A.; Sharma, P.; Sharma, S.; Singh, T.P.
Deposited on : 2021-07-18
Resolution : 2.28 Å(reported)

This is a Full wwPDB X-ray Structure Validation Report for a publicly released PDB entry.

We welcome your comments at validation@mail.wwpdb.org

A user guide is available at

<https://www.wwpdb.org/validation/2017/XrayValidationReportHelp>

with specific help available everywhere you see the ⓘ symbol.

The following versions of software and data (see [references ⓘ](#)) were used in the production of this report:

MolProbity : 4.02b-467
Mogul : 1.8.5 (274361), CSD as541be (2020)
Xtriage (Phenix) : 1.13
EDS : 2.27
buster-report : 1.1.7 (2018)
Percentile statistics : 20191225.v01 (using entries in the PDB archive December 25th 2019)
Refmac : 5.8.0158
CCP4 : 7.0.044 (Gargrove)
Ideal geometry (proteins) : Engh & Huber (2001)
Ideal geometry (DNA, RNA) : Parkinson et al. (1996)
Validation Pipeline (wwPDB-VP) : 2.27

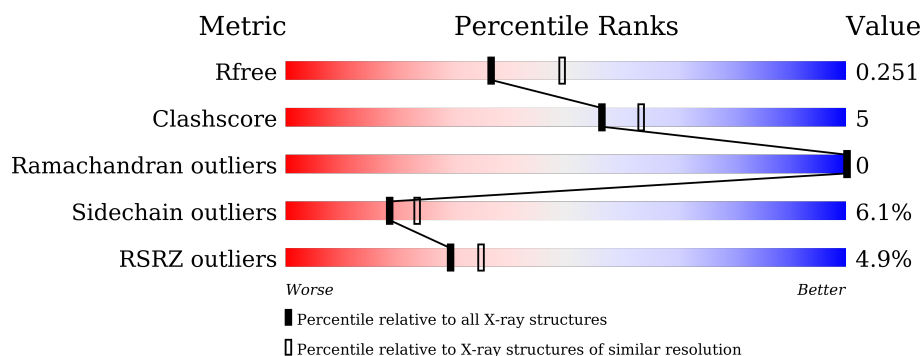
1 Overall quality at a glance

The following experimental techniques were used to determine the structure:

X-RAY DIFFRACTION

The reported resolution of this entry is 2.28 Å.

Percentile scores (ranging between 0-100) for global validation metrics of the entry are shown in the following graphic. The table shows the number of entries on which the scores are based.



Metric	Whole archive (#Entries)	Similar resolution (#Entries, resolution range(Å))
R_{free}	130704	6980 (2.30-2.26)
Clashscore	141614	7711 (2.30-2.26)
Ramachandran outliers	138981	7597 (2.30-2.26)
Sidechain outliers	138945	7598 (2.30-2.26)
RSRZ outliers	127900	6849 (2.30-2.26)

The table below summarises the geometric issues observed across the polymeric chains and their fit to the electron density. The red, orange, yellow and green segments of the lower bar indicate the fraction of residues that contain outliers for ≥ 3 , 2, 1 and 0 types of geometric quality criteria respectively. A grey segment represents the fraction of residues that are not modelled. The numeric value for each fraction is indicated below the corresponding segment, with a dot representing fractions $\leq 5\%$. The upper red bar (where present) indicates the fraction of residues that have poor fit to the electron density. The numeric value is given above the bar.

Mol	Chain	Length	Quality of chain
1	A	348	<div> <div></div> <div>84%</div> <div>16%</div> </div>
1	B	348	<div> <div>8%</div> <div>81%</div> <div>18%</div> <div>.</div> </div>
2	C	3	<div> <div>33%</div> <div>67%</div> </div>
2	D	3	<div> <div>67%</div> <div>33%</div> </div>
2	E	3	<div> <div>100%</div> </div>

2 Entry composition [i](#)

There are 6 unique types of molecules in this entry. The entry contains 5725 atoms, of which 0 are hydrogens and 0 are deuteriums.

In the tables below, the ZeroOcc column contains the number of atoms modelled with zero occupancy, the AltConf column contains the number of residues with at least one atom in alternate conformation and the Trace column contains the number of residues modelled with at most 2 atoms.

- Molecule 1 is a protein called Lactotransferrin.

Mol	Chain	Residues	Atoms					ZeroOcc	AltConf	Trace
1	A	348	Total	C	N	O	S	0	0	0
			2657	1655	465	516	21			
1	B	348	Total	C	N	O	S	0	0	0
			2657	1655	465	516	21			

- Molecule 2 is an oligosaccharide called beta-D-mannopyranose-(1-4)-2-acetamido-2-deoxy-beta-D-glucopyranose-(1-4)-2-acetamido-2-deoxy-beta-D-glucopyranose.

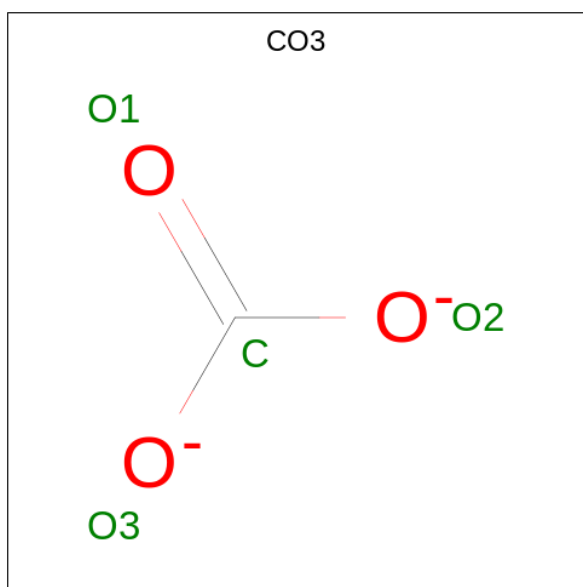


Mol	Chain	Residues	Atoms				ZeroOcc	AltConf	Trace
2	C	3	Total	C	N	O	0	0	0
			39	22	2	15			
2	D	3	Total	C	N	O	0	0	0
			39	22	2	15			
2	E	3	Total	C	N	O	0	0	0
			39	22	2	15			

- Molecule 3 is FE (III) ION (three-letter code: FE) (formula: Fe).

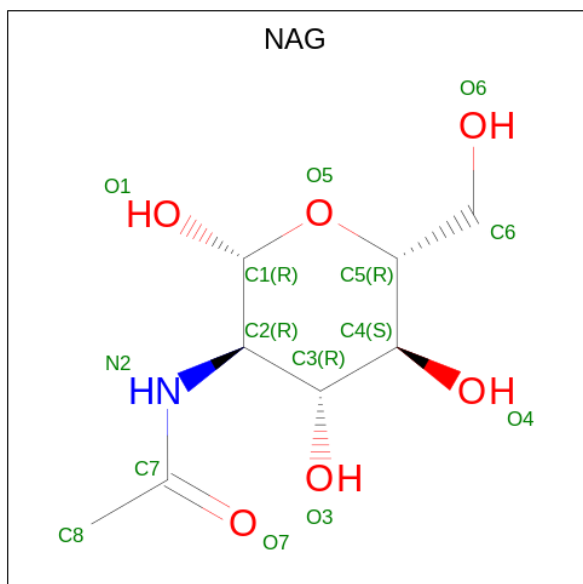
Mol	Chain	Residues	Atoms		ZeroOcc	AltConf
3	A	1	Total	Fe	0	0
			1	1		
3	B	1	Total	Fe	0	0
			1	1		

- Molecule 4 is CARBONATE ION (three-letter code: CO3) (formula: CO₃).



Mol	Chain	Residues	Atoms			ZeroOcc	AltConf
4	A	1	Total	C	O	0	0
			4	1	3		
4	B	1	Total	C	O	0	0
			4	1	3		

- Molecule 5 is 2-acetamido-2-deoxy-beta-D-glucopyranose (three-letter code: NAG) (formula: $C_8H_{15}NO_6$) (labeled as "Ligand of Interest" by depositor).



Mol	Chain	Residues	Atoms				ZeroOcc	AltConf
5	B	1	Total	C	N	O	0	0
			14	8	1	5		

Continued on next page...

Continued from previous page...

Mol	Chain	Residues	Atoms				ZeroOcc	AltConf
5	B	1	Total	C	N	O	0	0
			14	8	1	5		

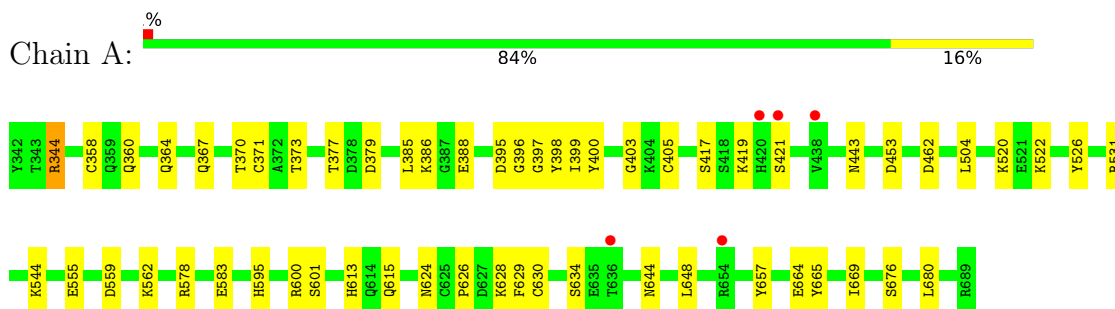
- Molecule 6 is water.

Mol	Chain	Residues	Atoms		ZeroOcc	AltConf
6	A	156	Total	O	0	0
			156	156		
6	B	100	Total	O	0	0
			100	100		

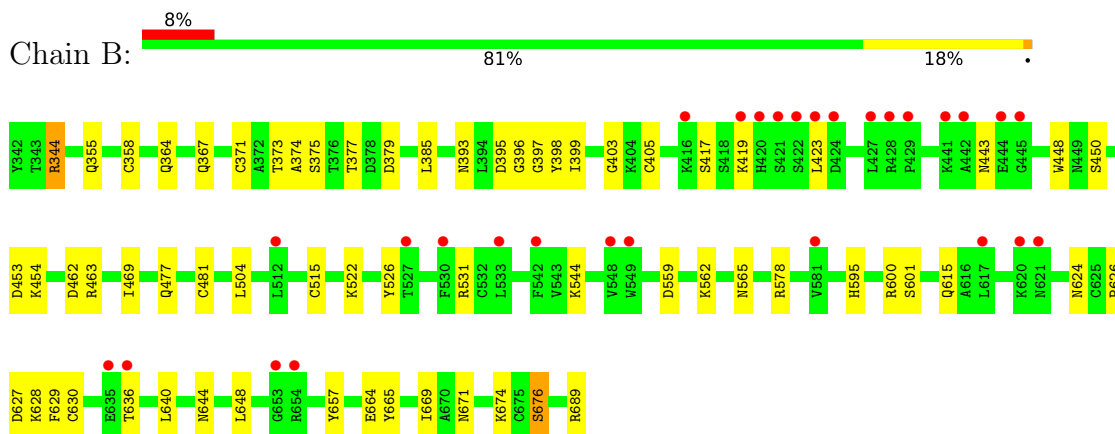
3 Residue-property plots

These plots are drawn for all protein, RNA, DNA and oligosaccharide chains in the entry. The first graphic for a chain summarises the proportions of the various outlier classes displayed in the second graphic. The second graphic shows the sequence view annotated by issues in geometry and electron density. Residues are color-coded according to the number of geometric quality criteria for which they contain at least one outlier: green = 0, yellow = 1, orange = 2 and red = 3 or more. A red dot above a residue indicates a poor fit to the electron density ($RSRZ > 2$). Stretches of 2 or more consecutive residues without any outlier are shown as a green connector. Residues present in the sample, but not in the model, are shown in grey.

- Molecule 1: Lactotransferrin



- Molecule 1: Lactotransferrin



- Molecule 2: beta-D-mannopyranose-(1-4)-2-acetamido-2-deoxy-beta-D-glucopyranose-(1-4)-2-acetamido-2-deoxy-beta-D-glucopyranose



- Molecule 2: beta-D-mannopyranose-(1-4)-2-acetamido-2-deoxy-beta-D-glucopyranose-(1-4)-2-acetamido-2-deoxy-beta-D-glucopyranose





- Molecule 2: beta-D-mannopyranose-(1-4)-2-acetamido-2-deoxy-beta-D-glucopyranose-(1-4)-2-acetamido-2-deoxy-beta-D-glucopyranose

Chain E:  100%



4 Data and refinement statistics

Property	Value	Source
Space group	C 1 2 1	Depositor
Cell constants a, b, c, α , β , γ	153.78Å 81.70Å 111.69Å 90.00° 129.86° 90.00°	Depositor
Resolution (Å)	76.70 – 2.28 76.74 – 2.28	Depositor EDS
% Data completeness (in resolution range)	98.8 (76.70-2.28) 98.8 (76.74-2.28)	Depositor EDS
R_{merge}	0.03	Depositor
R_{sym}	(Not available)	Depositor
$\langle I/\sigma(I) \rangle$ ¹	2.80 (at 2.27Å)	Xtriage
Refinement program	REFMAC 5.8.0267	Depositor
R, R_{free}	0.213 , 0.247 0.217 , 0.251	Depositor DCC
R_{free} test set	2465 reflections (5.11%)	wwPDB-VP
Wilson B-factor (Å ²)	52.1	Xtriage
Anisotropy	0.601	Xtriage
Bulk solvent k_{sol} (e/Å ³), B_{sol} (Å ²)	0.30 , 60.0	EDS
L-test for twinning ²	$\langle L \rangle = 0.48$, $\langle L^2 \rangle = 0.31$	Xtriage
Estimated twinning fraction	No twinning to report.	Xtriage
F_o, F_c correlation	0.95	EDS
Total number of atoms	5725	wwPDB-VP
Average B, all atoms (Å ²)	81.0	wwPDB-VP

Xtriage's analysis on translational NCS is as follows: *The largest off-origin peak in the Patterson function is 4.40% of the height of the origin peak. No significant pseudotranslation is detected.*

¹Intensities estimated from amplitudes.

²Theoretical values of $\langle |L| \rangle$, $\langle L^2 \rangle$ for acentric reflections are 0.5, 0.333 respectively for untwinned datasets, and 0.375, 0.2 for perfectly twinned datasets.

5 Model quality [i](#)

5.1 Standard geometry [i](#)

Bond lengths and bond angles in the following residue types are not validated in this section: BMA, NAG, FE, CO3

The Z score for a bond length (or angle) is the number of standard deviations the observed value is removed from the expected value. A bond length (or angle) with $|Z| > 5$ is considered an outlier worth inspection. RMSZ is the root-mean-square of all Z scores of the bond lengths (or angles).

Mol	Chain	Bond lengths		Bond angles	
		RMSZ	# Z >5	RMSZ	# Z >5
1	A	0.72	0/2707	0.85	0/3669
1	B	0.70	0/2707	0.84	0/3669
All	All	0.71	0/5414	0.84	0/7338

There are no bond length outliers.

There are no bond angle outliers.

There are no chirality outliers.

There are no planarity outliers.

5.2 Too-close contacts [i](#)

In the following table, the Non-H and H(model) columns list the number of non-hydrogen atoms and hydrogen atoms in the chain respectively. The H(added) column lists the number of hydrogen atoms added and optimized by MolProbity. The Clashes column lists the number of clashes within the asymmetric unit, whereas Symm-Clashes lists symmetry-related clashes.

Mol	Chain	Non-H	H(model)	H(added)	Clashes	Symm-Clashes
1	A	2657	0	2582	27	0
1	B	2657	0	2581	28	0
2	C	39	0	34	0	0
2	D	39	0	34	1	0
2	E	39	0	34	0	0
3	A	1	0	0	0	0
3	B	1	0	0	0	0
4	A	4	0	0	0	0
4	B	4	0	0	0	0
5	B	28	0	26	0	0
6	A	156	0	0	4	0

Continued on next page...

Continued from previous page...

Mol	Chain	Non-H	H(model)	H(added)	Clashes	Symm-Clashes
6	B	100	0	0	4	0
All	All	5725	0	5291	54	0

The all-atom clashscore is defined as the number of clashes found per 1000 atoms (including hydrogen atoms). The all-atom clashscore for this structure is 5.

All (54) close contacts within the same asymmetric unit are listed below, sorted by their clash magnitude.

Atom-1	Atom-2	Interatomic distance (Å)	Clash overlap (Å)
1:B:469:ILE:HD13	6:B:872:HOH:O	1.88	0.73
1:A:395:ASP:HA	1:A:595:HIS:CD2	2.39	0.58
1:A:615:GLN:OE1	1:A:648:LEU:N	2.27	0.57
1:B:395:ASP:HA	1:B:595:HIS:CD2	2.41	0.56
1:B:615:GLN:OE1	1:B:648:LEU:N	2.27	0.56
1:A:626:PRO:HA	1:A:630:CYS:SG	2.47	0.55
1:B:676:SER:HB2	6:B:809:HOH:O	2.06	0.54
1:B:559:ASP:HA	1:B:562:LYS:HE3	1.89	0.54
1:B:664:GLU:CD	1:B:664:GLU:H	2.11	0.53
1:B:385:LEU:HD21	1:B:405:CYS:HB3	1.90	0.53
1:A:559:ASP:HA	1:A:562:LYS:HE3	1.89	0.53
1:B:626:PRO:HA	1:B:630:CYS:SG	2.49	0.53
1:A:344:ARG:O	1:A:344:ARG:HG2	2.09	0.52
1:B:469:ILE:HA	6:B:872:HOH:O	2.10	0.52
1:B:364:GLN:HG3	1:B:629:PHE:HB2	1.91	0.52
1:A:364:GLN:HG3	1:A:629:PHE:HB2	1.92	0.51
1:B:377:THR:HG21	1:B:398:TYR:CD2	2.46	0.51
1:A:377:THR:HG21	1:A:398:TYR:CD2	2.47	0.50
1:B:624:ASN:HB3	1:B:628:LYS:HB2	1.94	0.50
1:A:624:ASN:HB3	1:A:628:LYS:HB2	1.94	0.49
1:B:600:ARG:NE	6:B:808:HOH:O	2.45	0.49
1:A:386:LYS:HG3	1:A:388:GLU:HG3	1.96	0.48
1:B:397:GLY:HA3	1:B:462:ASP:O	2.14	0.47
1:A:358:CYS:C	1:A:371:CYS:SG	2.94	0.46
1:B:448:TRP:HE1	1:B:477:GLN:HE22	1.62	0.46
1:B:522:LYS:HE3	1:B:531:ARG:NH2	2.31	0.46
1:A:397:GLY:HA3	1:A:462:ASP:O	2.16	0.46
1:B:450:SER:O	1:B:454:LYS:HE2	2.16	0.46
1:B:403:GLY:HA3	1:B:657:TYR:CG	2.50	0.46
1:B:671:ASN:HD22	1:B:674:LYS:NZ	2.14	0.46
1:B:344:ARG:HG3	1:B:367:GLN:O	2.16	0.45
1:A:522:LYS:HE3	1:A:531:ARG:NH2	2.31	0.45

Continued on next page...

Continued from previous page...

Atom-1	Atom-2	Interatomic distance (Å)	Clash overlap (Å)
1:A:396:GLY:HA2	1:A:399:ILE:HD12	1.99	0.45
1:A:385:LEU:HD21	1:A:405:CYS:O	2.17	0.45
1:A:583:GLU:HA	6:A:834:HOH:O	2.16	0.44
1:A:613:HIS:HE1	2:D:1:NAG:O3	2.01	0.44
1:B:374:ALA:HB1	1:B:379:ASP:HB3	1.99	0.44
1:B:396:GLY:HA2	1:B:399:ILE:HD12	1.99	0.43
1:B:665:TYR:CZ	1:B:669:ILE:HD11	2.53	0.43
1:A:600:ARG:HD2	6:A:925:HOH:O	2.18	0.43
1:A:520:LYS:HD2	1:A:520:LYS:HA	1.89	0.43
1:A:367:GLN:NE2	6:A:821:HOH:O	2.51	0.42
1:A:397:GLY:O	1:A:400:TYR:HB3	2.20	0.42
1:A:370:THR:HG21	1:B:481:CYS:SG	2.59	0.42
1:B:395:ASP:OD2	1:B:463:ARG:HA	2.20	0.41
1:A:385:LEU:HD23	1:A:385:LEU:HA	1.86	0.41
1:A:680:LEU:HD12	1:A:680:LEU:HA	1.93	0.41
1:A:379:ASP:OD2	6:A:801:HOH:O	2.21	0.41
1:A:403:GLY:HA3	1:A:657:TYR:CG	2.55	0.41
1:A:526:TYR:CD2	1:A:544:LYS:HE2	2.56	0.41
1:B:358:CYS:C	1:B:371:CYS:SG	2.99	0.41
1:A:665:TYR:CZ	1:A:669:ILE:HD11	2.56	0.40
1:B:393:ASN:HB3	1:B:640:LEU:O	2.21	0.40
1:B:526:TYR:CD2	1:B:544:LYS:HE2	2.56	0.40

There are no symmetry-related clashes.

5.3 Torsion angles [i](#)

5.3.1 Protein backbone [i](#)

In the following table, the Percentiles column shows the percent Ramachandran outliers of the chain as a percentile score with respect to all X-ray entries followed by that with respect to entries of similar resolution.

The Analysed column shows the number of residues for which the backbone conformation was analysed, and the total number of residues.

Mol	Chain	Analysed	Favoured	Allowed	Outliers	Percentiles	
1	A	346/348 (99%)	328 (95%)	18 (5%)	0	100	100
1	B	346/348 (99%)	328 (95%)	18 (5%)	0	100	100
All	All	692/696 (99%)	656 (95%)	36 (5%)	0	100	100

There are no Ramachandran outliers to report.

5.3.2 Protein sidechains ⓘ

In the following table, the Percentiles column shows the percent sidechain outliers of the chain as a percentile score with respect to all X-ray entries followed by that with respect to entries of similar resolution.

The Analysed column shows the number of residues for which the sidechain conformation was analysed, and the total number of residues.

Mol	Chain	Analysed	Rotameric	Outliers	Percentiles	
1	A	289/289 (100%)	273 (94%)	16 (6%)	21	27
1	B	289/289 (100%)	270 (93%)	19 (7%)	16	20
All	All	578/578 (100%)	543 (94%)	35 (6%)	18	23

All (35) residues with a non-rotameric sidechain are listed below:

Mol	Chain	Res	Type
1	A	344	ARG
1	A	360	GLN
1	A	373	THR
1	A	417	SER
1	A	419	LYS
1	A	421	SER
1	A	443	ASN
1	A	453	ASP
1	A	504	LEU
1	A	555	GLU
1	A	578	ARG
1	A	601	SER
1	A	634	SER
1	A	644	ASN
1	A	664	GLU
1	A	676	SER
1	B	344	ARG
1	B	355	GLN
1	B	373	THR
1	B	375	SER
1	B	417	SER
1	B	419	LYS
1	B	423	LEU
1	B	443	ASN
1	B	453	ASP

Continued on next page...

Continued from previous page...

Mol	Chain	Res	Type
1	B	504	LEU
1	B	515	CYS
1	B	565	ASN
1	B	578	ARG
1	B	601	SER
1	B	627	ASP
1	B	636	THR
1	B	644	ASN
1	B	676	SER
1	B	689	ARG

Sometimes sidechains can be flipped to improve hydrogen bonding and reduce clashes. All (10) such sidechains are listed below:

Mol	Chain	Res	Type
1	A	443	ASN
1	A	468	ASN
1	A	594	ASN
1	A	613	HIS
1	A	644	ASN
1	B	355	GLN
1	B	468	ASN
1	B	477	GLN
1	B	644	ASN
1	B	671	ASN

5.3.3 RNA [i](#)

There are no RNA molecules in this entry.

5.4 Non-standard residues in protein, DNA, RNA chains [i](#)

There are no non-standard protein/DNA/RNA residues in this entry.

5.5 Carbohydrates [i](#)

9 monosaccharides are modelled in this entry.

In the following table, the Counts columns list the number of bonds (or angles) for which Mogul statistics could be retrieved, the number of bonds (or angles) that are observed in the model and the number of bonds (or angles) that are defined in the Chemical Component Dictionary. The

Link column lists molecule types, if any, to which the group is linked. The Z score for a bond length (or angle) is the number of standard deviations the observed value is removed from the expected value. A bond length (or angle) with $|Z| > 2$ is considered an outlier worth inspection. RMSZ is the root-mean-square of all Z scores of the bond lengths (or angles).

Mol	Type	Chain	Res	Link	Bond lengths			Bond angles		
					Counts	RMSZ	# Z > 2	Counts	RMSZ	# Z > 2
2	NAG	C	1	2,1	14,14,15	0.57	0	17,19,21	1.47	5 (29%)
2	NAG	C	2	2	14,14,15	0.48	0	17,19,21	1.01	0
2	BMA	C	3	2	11,11,12	0.70	0	15,15,17	1.38	3 (20%)
2	NAG	D	1	2,1	14,14,15	0.96	0	17,19,21	1.86	7 (41%)
2	NAG	D	2	2	14,14,15	0.72	0	17,19,21	1.26	2 (11%)
2	BMA	D	3	2	11,11,12	0.27	0	15,15,17	1.05	1 (6%)
2	NAG	E	1	2,1	14,14,15	0.65	0	17,19,21	1.40	3 (17%)
2	NAG	E	2	2	14,14,15	0.57	0	17,19,21	1.39	2 (11%)
2	BMA	E	3	2	11,11,12	0.59	0	15,15,17	1.35	2 (13%)

In the following table, the Chirals column lists the number of chiral outliers, the number of chiral centers analysed, the number of these observed in the model and the number defined in the Chemical Component Dictionary. Similar counts are reported in the Torsion and Rings columns. '-' means no outliers of that kind were identified.

Mol	Type	Chain	Res	Link	Chirals	Torsions	Rings
2	NAG	C	1	2,1	-	0/6/23/26	0/1/1/1
2	NAG	C	2	2	-	0/6/23/26	0/1/1/1
2	BMA	C	3	2	-	1/2/19/22	0/1/1/1
2	NAG	D	1	2,1	-	0/6/23/26	0/1/1/1
2	NAG	D	2	2	-	0/6/23/26	0/1/1/1
2	BMA	D	3	2	-	1/2/19/22	0/1/1/1
2	NAG	E	1	2,1	-	0/6/23/26	0/1/1/1
2	NAG	E	2	2	-	2/6/23/26	0/1/1/1
2	BMA	E	3	2	-	2/2/19/22	0/1/1/1

There are no bond length outliers.

All (25) bond angle outliers are listed below:

Mol	Chain	Res	Type	Atoms	Z	Observed(°)	Ideal(°)
2	C	3	BMA	C3-C4-C5	3.76	116.95	110.24
2	D	1	NAG	O5-C5-C6	-3.67	101.44	107.20
2	D	2	NAG	C4-C3-C2	3.44	116.06	111.02
2	E	1	NAG	C1-O5-C5	3.37	116.75	112.19
2	E	2	NAG	O5-C5-C6	3.03	111.95	107.20

Continued on next page...

Continued from previous page...

Mol	Chain	Res	Type	Atoms	Z	Observed(°)	Ideal(°)
2	E	3	BMA	C1-O5-C5	3.02	116.28	112.19
2	E	1	NAG	C1-C2-N2	-2.90	105.53	110.49
2	E	2	NAG	C3-C4-C5	-2.86	105.14	110.24
2	E	3	BMA	C1-C2-C3	2.76	113.06	109.67
2	C	1	NAG	O5-C5-C6	-2.56	103.20	107.20
2	D	1	NAG	O5-C1-C2	-2.55	107.26	111.29
2	D	1	NAG	O7-C7-N2	-2.50	117.36	121.95
2	D	1	NAG	O4-C4-C5	2.48	115.45	109.30
2	E	1	NAG	C4-C3-C2	2.46	114.63	111.02
2	D	3	BMA	O5-C1-C2	-2.42	107.04	110.77
2	D	2	NAG	O5-C5-C6	2.32	110.84	107.20
2	C	1	NAG	C1-C2-N2	-2.30	106.56	110.49
2	C	1	NAG	C3-C4-C5	2.26	114.27	110.24
2	D	1	NAG	O4-C4-C3	-2.15	105.37	110.35
2	C	3	BMA	C2-C3-C4	2.13	114.59	110.89
2	D	1	NAG	C6-C5-C4	2.13	117.99	113.00
2	C	1	NAG	C8-C7-N2	-2.12	112.51	116.10
2	D	1	NAG	O7-C7-C8	2.08	125.92	122.06
2	C	1	NAG	O6-C6-C5	-2.06	104.22	111.29
2	C	3	BMA	C1-C2-C3	2.02	112.14	109.67

There are no chirality outliers.

All (6) torsion outliers are listed below:

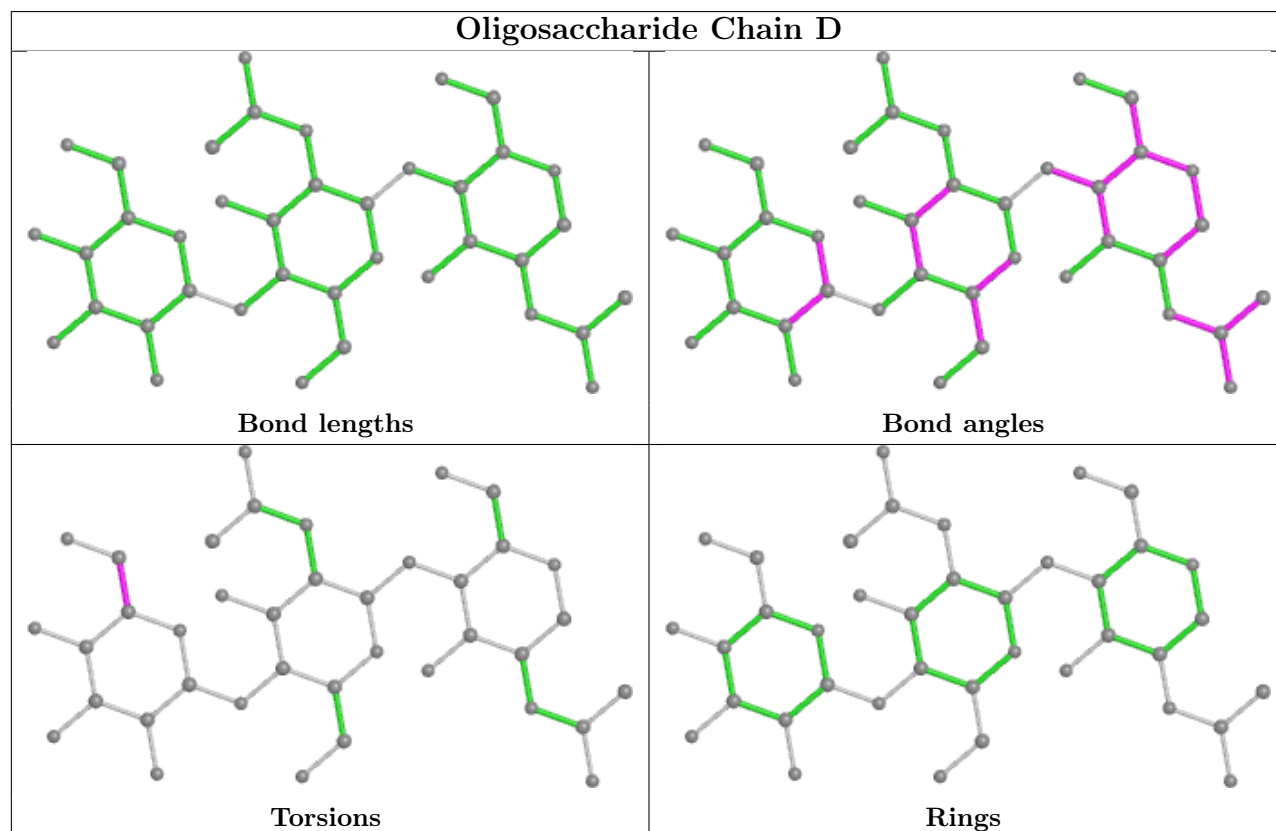
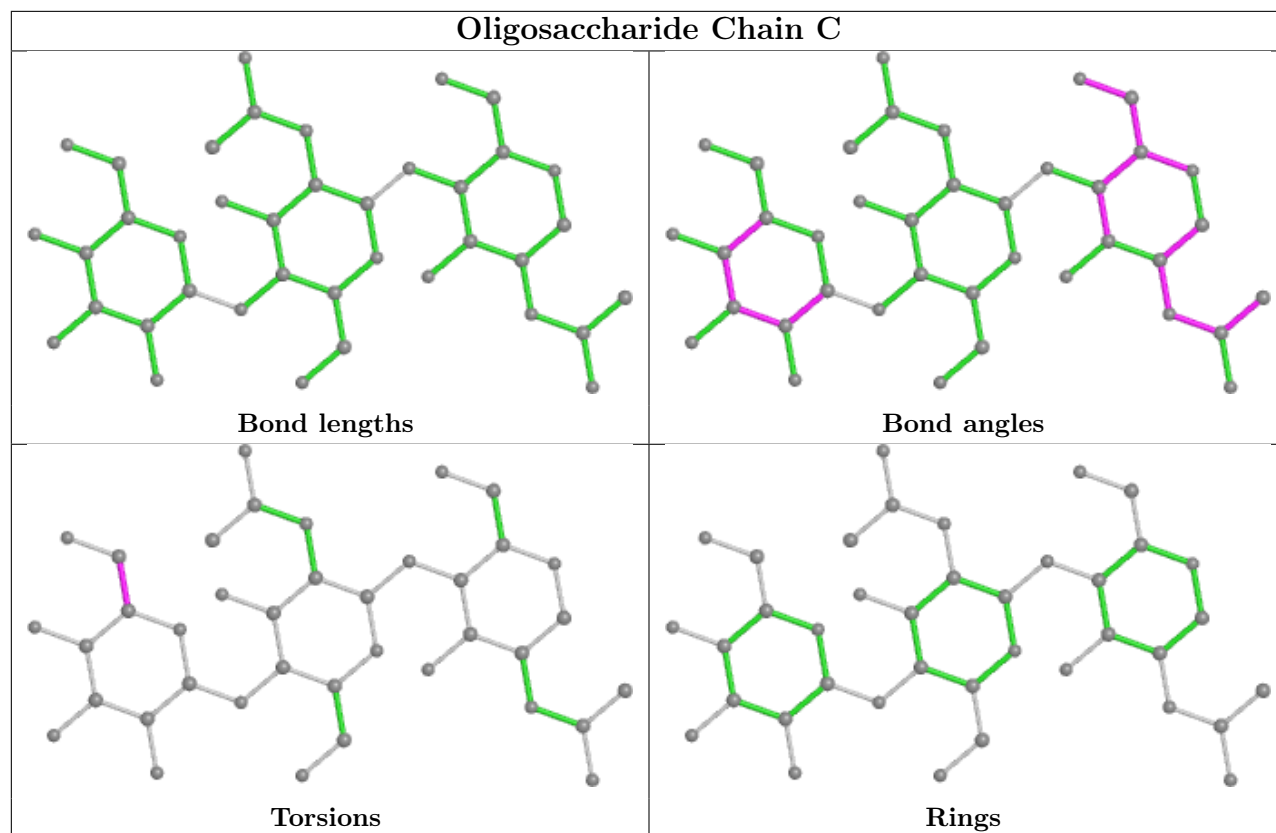
Mol	Chain	Res	Type	Atoms
2	E	3	BMA	O5-C5-C6-O6
2	E	2	NAG	C4-C5-C6-O6
2	E	2	NAG	O5-C5-C6-O6
2	E	3	BMA	C4-C5-C6-O6
2	C	3	BMA	O5-C5-C6-O6
2	D	3	BMA	C4-C5-C6-O6

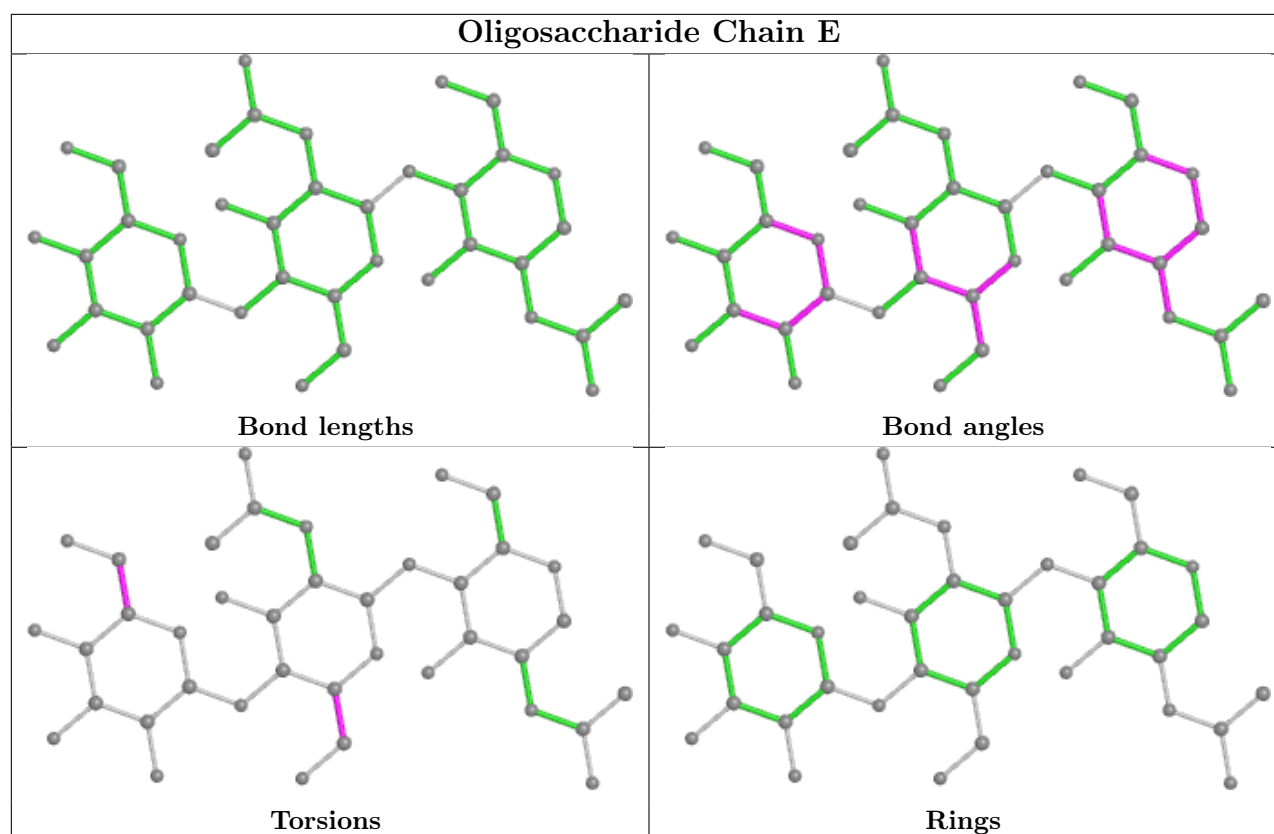
There are no ring outliers.

1 monomer is involved in 1 short contact:

Mol	Chain	Res	Type	Clashes	Symm-Clashes
2	D	1	NAG	1	0

The following is a two-dimensional graphical depiction of Mogul quality analysis of bond lengths, bond angles, torsion angles, and ring geometry for oligosaccharide.





5.6 Ligand geometry [i](#)

Of 6 ligands modelled in this entry, 2 are monoatomic - leaving 4 for Mogul analysis.

In the following table, the Counts columns list the number of bonds (or angles) for which Mogul statistics could be retrieved, the number of bonds (or angles) that are observed in the model and the number of bonds (or angles) that are defined in the Chemical Component Dictionary. The Link column lists molecule types, if any, to which the group is linked. The Z score for a bond length (or angle) is the number of standard deviations the observed value is removed from the expected value. A bond length (or angle) with $|Z| > 2$ is considered an outlier worth inspection. RMSZ is the root-mean-square of all Z scores of the bond lengths (or angles).

Mol	Type	Chain	Res	Link	Bond lengths			Bond angles		
					Counts	RMSZ	$\# Z > 2$	Counts	RMSZ	$\# Z > 2$
4	CO3	A	702	3	0,3,3	-	-	0,3,3	-	-
4	CO3	B	704	3	0,3,3	-	-	0,3,3	-	-
5	NAG	B	702	1	14,14,15	0.83	0	17,19,21	1.48	5 (29%)
5	NAG	B	701	1	14,14,15	0.83	0	17,19,21	1.35	2 (11%)

In the following table, the Chirals column lists the number of chiral outliers, the number of chiral centers analysed, the number of these observed in the model and the number defined in the Chemical Component Dictionary. Similar counts are reported in the Torsion and Rings columns. '-' means no outliers of that kind were identified.

Mol	Type	Chain	Res	Link	Chirals	Torsions	Rings
5	NAG	B	702	1	-	0/6/23/26	0/1/1/1
5	NAG	B	701	1	-	2/6/23/26	0/1/1/1

There are no bond length outliers.

All (7) bond angle outliers are listed below:

Mol	Chain	Res	Type	Atoms	Z	Observed(°)	Ideal(°)
5	B	701	NAG	C1-O5-C5	3.70	117.20	112.19
5	B	702	NAG	C1-C2-N2	-2.71	105.85	110.49
5	B	702	NAG	C1-O5-C5	2.51	115.59	112.19
5	B	701	NAG	O5-C5-C6	2.46	111.06	107.20
5	B	702	NAG	O5-C1-C2	-2.43	107.45	111.29
5	B	702	NAG	O4-C4-C5	2.27	114.93	109.30
5	B	702	NAG	O5-C5-C6	-2.10	103.91	107.20

There are no chirality outliers.

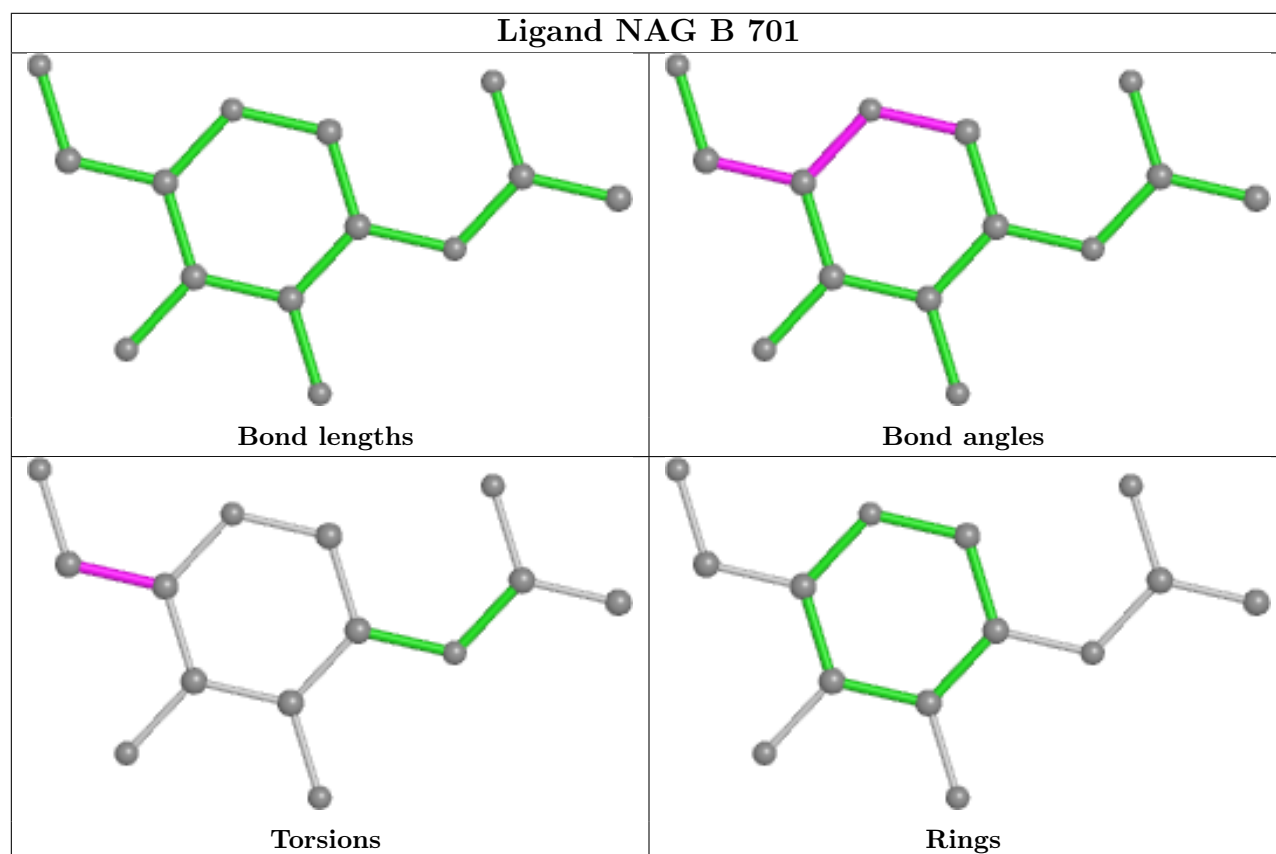
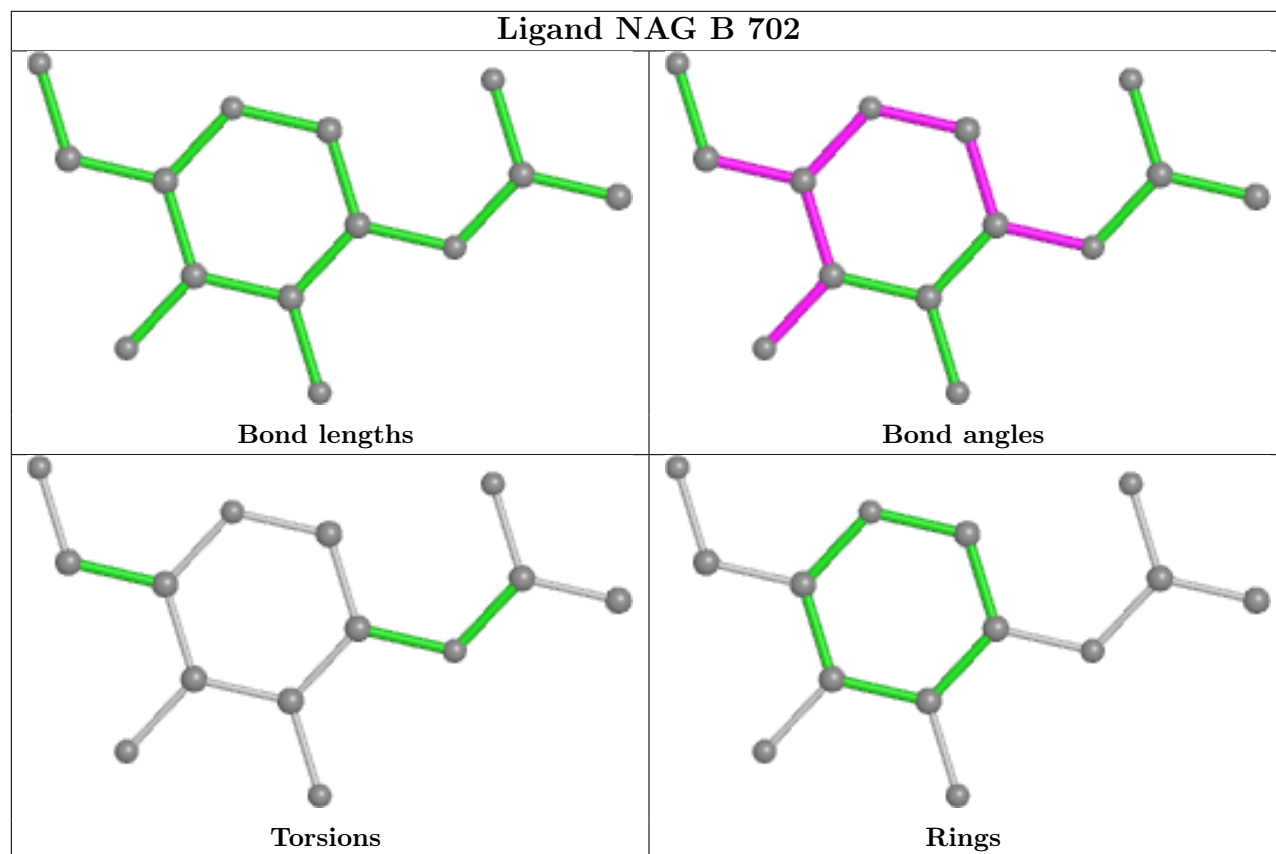
All (2) torsion outliers are listed below:

Mol	Chain	Res	Type	Atoms
5	B	701	NAG	O5-C5-C6-O6
5	B	701	NAG	C4-C5-C6-O6

There are no ring outliers.

No monomer is involved in short contacts.

The following is a two-dimensional graphical depiction of Mogul quality analysis of bond lengths, bond angles, torsion angles, and ring geometry for all instances of the Ligand of Interest. In addition, ligands with molecular weight > 250 and outliers as shown on the validation Tables will also be included. For torsion angles, if less than 5% of the Mogul distribution of torsion angles is within 10 degrees of the torsion angle in question, then that torsion angle is considered an outlier. Any bond that is central to one or more torsion angles identified as an outlier by Mogul will be highlighted in the graph. For rings, the root-mean-square deviation (RMSD) between the ring in question and similar rings identified by Mogul is calculated over all ring torsion angles. If the average RMSD is greater than 60 degrees and the minimal RMSD between the ring in question and any Mogul-identified rings is also greater than 60 degrees, then that ring is considered an outlier. The outliers are highlighted in purple. The color gray indicates Mogul did not find sufficient equivalents in the CSD to analyse the geometry.



5.7 Other polymers [i](#)

There are no such residues in this entry.

5.8 Polymer linkage issues [i](#)

There are no chain breaks in this entry.

6 Fit of model and data

6.1 Protein, DNA and RNA chains

In the following table, the column labelled ‘#RSRZ> 2’ contains the number (and percentage) of RSRZ outliers, followed by percent RSRZ outliers for the chain as percentile scores relative to all X-ray entries and entries of similar resolution. The OWAB column contains the minimum, median, 95th percentile and maximum values of the occupancy-weighted average B-factor per residue. The column labelled ‘Q< 0.9’ lists the number of (and percentage) of residues with an average occupancy less than 0.9.

Mol	Chain	Analysed	<RSRZ>	#RSRZ>2	OWAB(Å ²)	Q<0.9
1	A	348/348 (100%)	0.43	5 (1%) 75 79	43, 72, 116, 183	0
1	B	348/348 (100%)	0.60	29 (8%) 11 14	50, 79, 126, 180	0
All	All	696/696 (100%)	0.52	34 (4%) 29 35	43, 75, 124, 183	0

All (34) RSRZ outliers are listed below:

Mol	Chain	Res	Type	RSRZ
1	B	421	SER	11.7
1	A	654	ARG	6.2
1	A	421	SER	6.1
1	B	636	THR	5.7
1	B	420	HIS	5.6
1	B	654	ARG	5.3
1	B	419	LYS	5.0
1	B	424	ASP	4.7
1	B	445	GLY	4.4
1	A	420	HIS	4.2
1	A	636	THR	4.1
1	B	530	PHE	4.1
1	B	444	GLU	3.6
1	B	429	PRO	3.6
1	B	423	LEU	3.5
1	B	548	VAL	3.2
1	B	441	LYS	3.1
1	B	442	ALA	2.9
1	B	621	ASN	2.8
1	B	527	THR	2.8
1	B	549	TRP	2.7
1	B	427	LEU	2.6
1	A	438	VAL	2.4
1	B	512	LEU	2.4

Continued on next page...

Continued from previous page...

Mol	Chain	Res	Type	RSRZ
1	B	617	LEU	2.3
1	B	416	LYS	2.3
1	B	635	GLU	2.3
1	B	581	VAL	2.3
1	B	422	SER	2.3
1	B	533	LEU	2.2
1	B	620	LYS	2.2
1	B	542	PHE	2.1
1	B	653	GLY	2.1
1	B	428	ARG	2.0

6.2 Non-standard residues in protein, DNA, RNA chains [i](#)

There are no non-standard protein/DNA/RNA residues in this entry.

6.3 Carbohydrates [i](#)

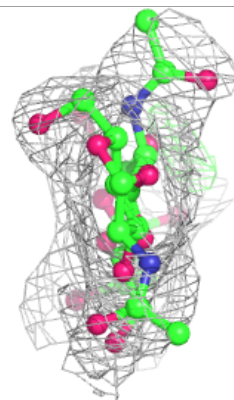
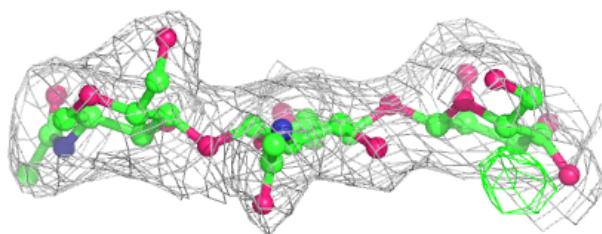
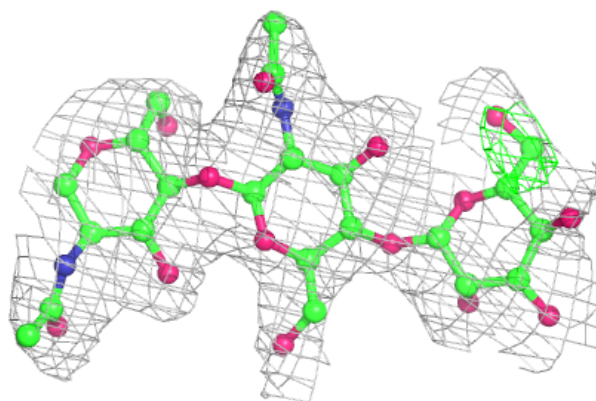
In the following table, the Atoms column lists the number of modelled atoms in the group and the number defined in the chemical component dictionary. The B-factors column lists the minimum, median, 95th percentile and maximum values of B factors of atoms in the group. The column labelled 'Q< 0.9' lists the number of atoms with occupancy less than 0.9.

Mol	Type	Chain	Res	Atoms	RSCC	RSR	B-factors(\AA^2)	Q<0.9
2	BMA	D	3	11/12	0.76	0.21	127,154,161,163	0
2	BMA	C	3	11/12	0.78	0.18	109,123,133,135	0
2	BMA	E	3	11/12	0.78	0.13	108,136,143,157	0
2	NAG	D	2	14/15	0.87	0.13	89,113,139,152	0
2	NAG	E	2	14/15	0.90	0.16	94,102,113,134	0
2	NAG	C	2	14/15	0.93	0.12	93,106,119,131	0
2	NAG	E	1	14/15	0.93	0.13	73,87,94,103	0
2	NAG	D	1	14/15	0.96	0.12	65,70,80,90	0
2	NAG	C	1	14/15	0.96	0.13	72,81,87,96	0

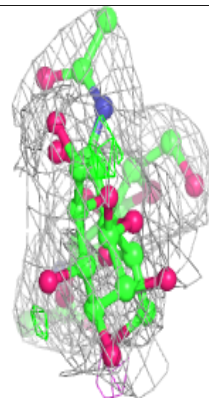
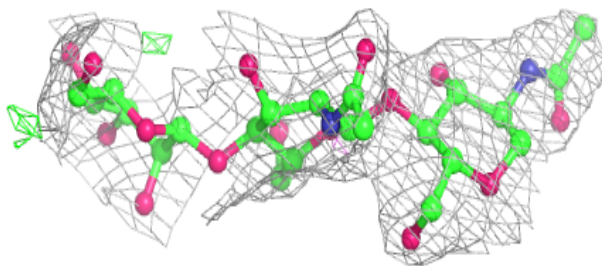
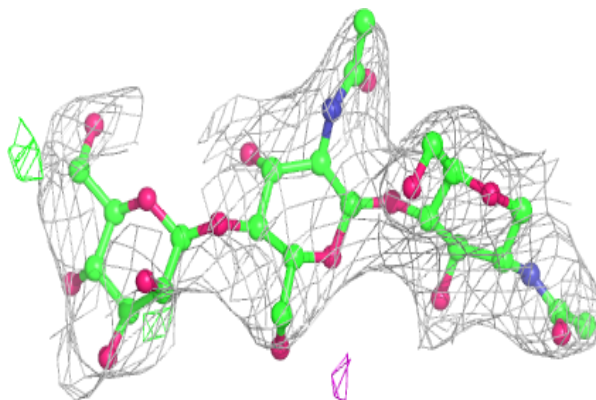
The following is a graphical depiction of the model fit to experimental electron density for oligosaccharide. Each fit is shown from different orientation to approximate a three-dimensional view.

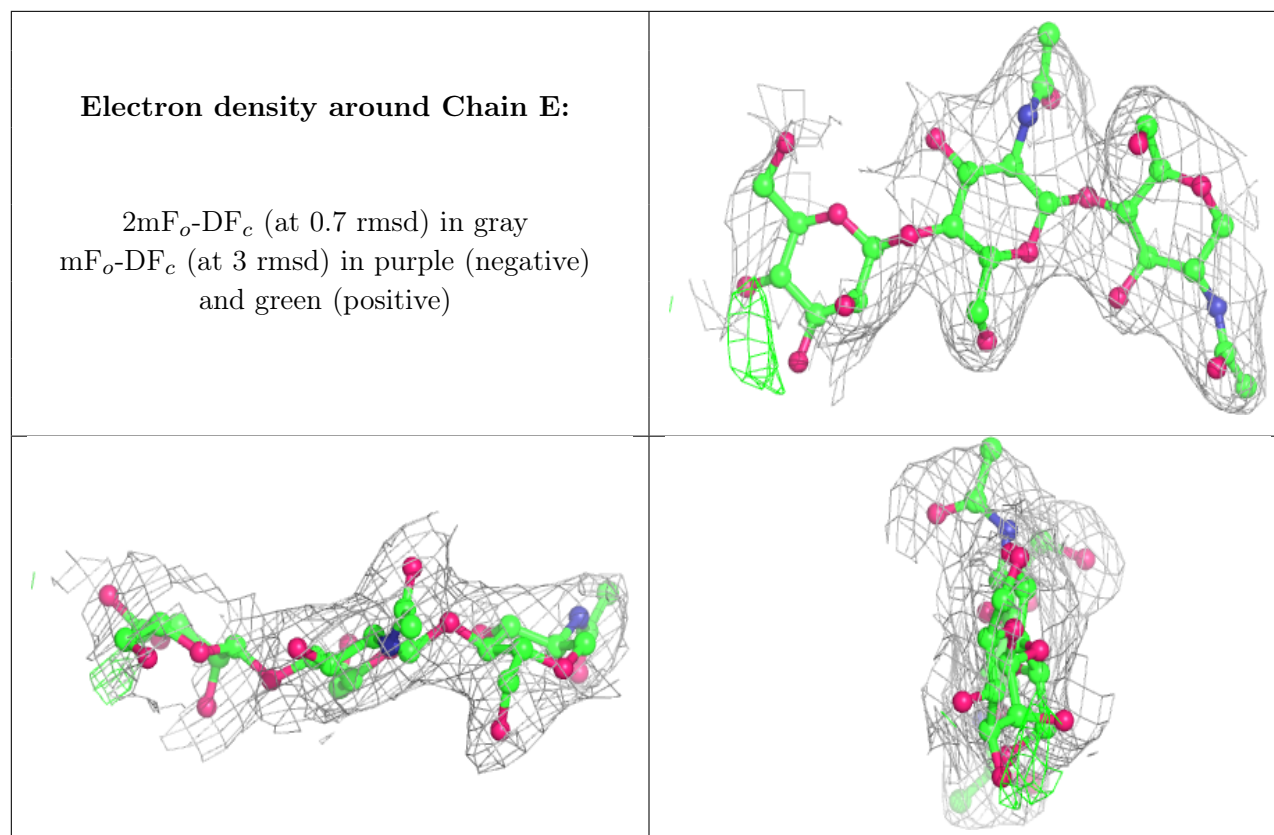
Electron density around Chain C:

$2mF_o-DF_c$ (at 0.7 rmsd) in gray
 mF_o-DF_c (at 3 rmsd) in purple (negative)
and green (positive)

**Electron density around Chain D:**

$2mF_o-DF_c$ (at 0.7 rmsd) in gray
 mF_o-DF_c (at 3 rmsd) in purple (negative)
and green (positive)





6.4 Ligands [i](#)

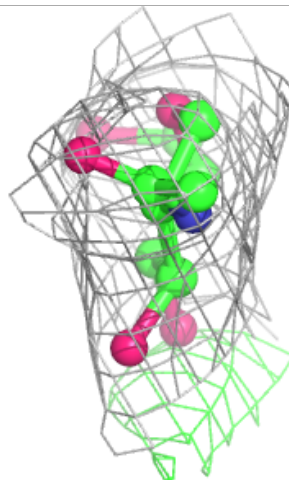
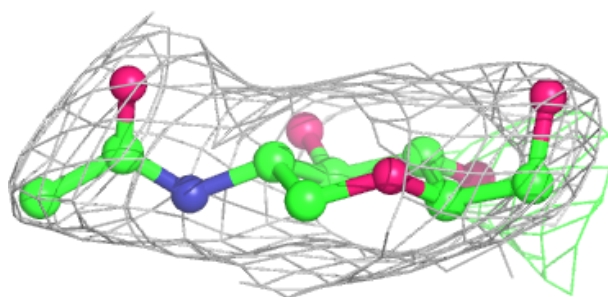
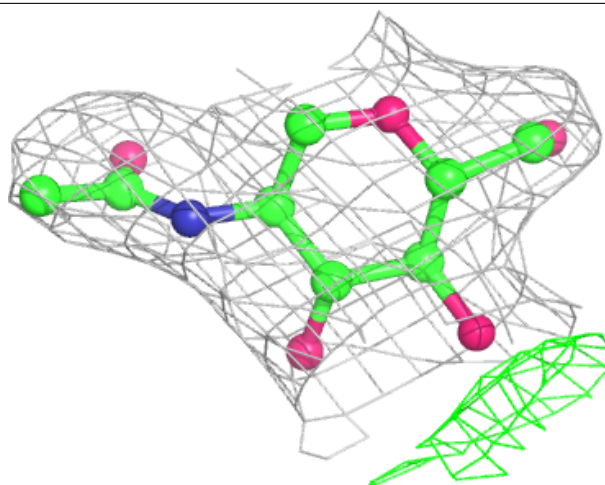
In the following table, the Atoms column lists the number of modelled atoms in the group and the number defined in the chemical component dictionary. The B-factors column lists the minimum, median, 95th percentile and maximum values of B factors of atoms in the group. The column labelled 'Q< 0.9' lists the number of atoms with occupancy less than 0.9.

Mol	Type	Chain	Res	Atoms	RSCC	RSR	B-factors(\AA^2)	Q<0.9
5	NAG	B	702	14/15	0.74	0.14	88,99,111,111	0
5	NAG	B	701	14/15	0.89	0.12	86,98,110,113	0
4	CO3	B	704	4/4	0.96	0.13	45,45,49,52	0
4	CO3	A	702	4/4	0.97	0.12	49,49,54,58	0
3	FE	A	701	1/1	0.99	0.15	70,70,70,70	0
3	FE	B	703	1/1	0.99	0.11	66,66,66,66	0

The following is a graphical depiction of the model fit to experimental electron density of all instances of the Ligand of Interest. In addition, ligands with molecular weight > 250 and outliers as shown on the geometry validation Tables will also be included. Each fit is shown from different orientation to approximate a three-dimensional view.

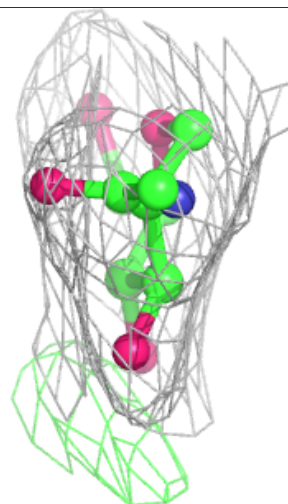
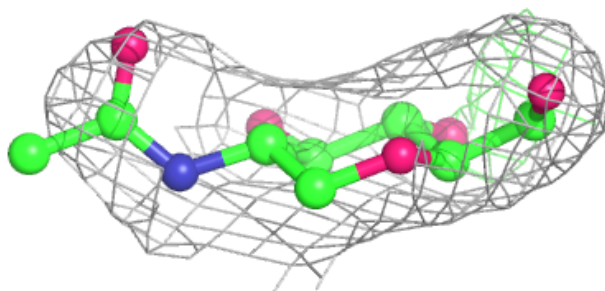
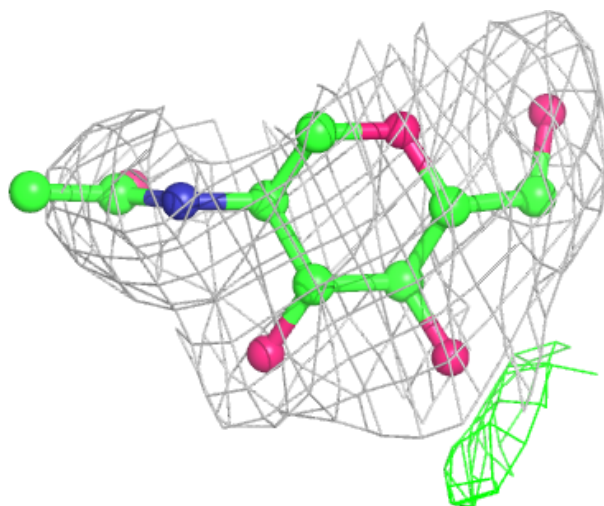
Electron density around NAG B 702:

$2mF_o-DF_c$ (at 0.7 rmsd) in gray
 mF_o-DF_c (at 3 rmsd) in purple (negative)
and green (positive)



Electron density around NAG B 701:

$2mF_o-DF_c$ (at 0.7 rmsd) in gray
 mF_o-DF_c (at 3 rmsd) in purple (negative)
and green (positive)



6.5 Other polymers [i](#)

There are no such residues in this entry.