



Full wwPDB X-ray Structure Validation Report ⓘ

May 16, 2020 – 11:09 am BST

PDB ID : 6FE0
Title : Three dimensional structure of human carbonic anhydrase IX in complex with benzenesulfonamide.
Authors : Leitans, J.; Tars, K.
Deposited on : 2017-12-28
Resolution : 1.91 Å(reported)

This is a Full wwPDB X-ray Structure Validation Report for a publicly released PDB entry.

We welcome your comments at validation@mail.wwpdb.org

A user guide is available at

<https://www.wwpdb.org/validation/2017/XrayValidationReportHelp>

with specific help available everywhere you see the ⓘ symbol.

The following versions of software and data (see [references ⓘ](#)) were used in the production of this report:

MolProbity : 4.02b-467
Mogul : 1.8.5 (274361), CSD as541be (2020)
Xtriage (Phenix) : 1.13
EDS : 2.11
buster-report : 1.1.7 (2018)
Percentile statistics : 20191225.v01 (using entries in the PDB archive December 25th 2019)
Refmac : 5.8.0158
CCP4 : 7.0.044 (Gargrove)
Ideal geometry (proteins) : Engh & Huber (2001)
Ideal geometry (DNA, RNA) : Parkinson et al. (1996)
Validation Pipeline (wwPDB-VP) : 2.11

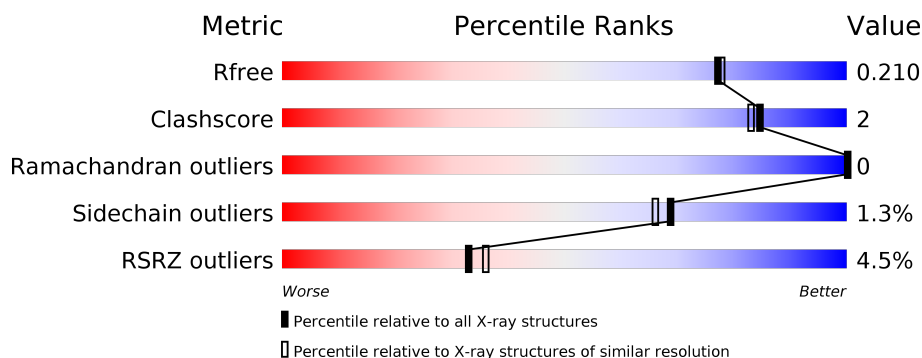
1 Overall quality at a glance

The following experimental techniques were used to determine the structure:

X-RAY DIFFRACTION

The reported resolution of this entry is 1.91 Å.

Percentile scores (ranging between 0-100) for global validation metrics of the entry are shown in the following graphic. The table shows the number of entries on which the scores are based.



Metric	Whole archive (#Entries)	Similar resolution (#Entries, resolution range(Å))
R_{free}	130704	7937 (1.94-1.90)
Clashscore	141614	8644 (1.94-1.90)
Ramachandran outliers	138981	8530 (1.94-1.90)
Sidechain outliers	138945	8530 (1.94-1.90)
RSRZ outliers	127900	7793 (1.94-1.90)

The table below summarises the geometric issues observed across the polymeric chains and their fit to the electron density. The red, orange, yellow and green segments on the lower bar indicate the fraction of residues that contain outliers for ≥ 3 , 2, 1 and 0 types of geometric quality criteria respectively. A grey segment represents the fraction of residues that are not modelled. The numeric value for each fraction is indicated below the corresponding segment, with a dot representing fractions $\leq 5\%$. The upper red bar (where present) indicates the fraction of residues that have poor fit to the electron density. The numeric value is given above the bar.

Mol	Chain	Length	Quality of chain
1	A	257	<div> <div>4%</div> <div> <div></div> <div>87%</div> <div>5% • 7%</div> </div> </div>
1	B	257	<div> <div>2%</div> <div> <div></div> <div>87%</div> <div>6% 7%</div> </div> </div>
1	C	257	<div> <div>5%</div> <div> <div></div> <div>87%</div> <div>6% 7%</div> </div> </div>
1	D	257	<div> <div>5%</div> <div> <div></div> <div>88%</div> <div>• • 7%</div> </div> </div>

2 Entry composition

There are 4 unique types of molecules in this entry. The entry contains 8351 atoms, of which 0 are hydrogens and 0 are deuteriums.

In the tables below, the ZeroOcc column contains the number of atoms modelled with zero occupancy, the AltConf column contains the number of residues with at least one atom in alternate conformation and the Trace column contains the number of residues modelled with at most 2 atoms.

- Molecule 1 is a protein called Carbonic anhydrase 9.

Mol	Chain	Residues	Atoms					ZeroOcc	AltConf	Trace
1	A	239	Total	C	N	O	S	0	2	0
			1854	1178	331	341	4			
1	B	239	Total	C	N	O	S	0	9	0
			1883	1202	331	346	4			
1	C	239	Total	C	N	O	S	0	1	0
			1845	1172	326	343	4			
1	D	239	Total	C	N	O	S	0	6	0
			1869	1190	331	344	4			

There are 12 discrepancies between the modelled and reference sequences:

Chain	Residue	Modelled	Actual	Comment	Reference
A	2	GLY	-	expression tag	UNP Q16790
A	3	PRO	-	expression tag	UNP Q16790
A	41	SER	CYS	engineered mutation	UNP Q16790
B	2	GLY	-	expression tag	UNP Q16790
B	3	PRO	-	expression tag	UNP Q16790
B	41	SER	CYS	engineered mutation	UNP Q16790
C	2	GLY	-	expression tag	UNP Q16790
C	3	PRO	-	expression tag	UNP Q16790
C	41	SER	CYS	engineered mutation	UNP Q16790
D	2	GLY	-	expression tag	UNP Q16790
D	3	PRO	-	expression tag	UNP Q16790
D	41	SER	CYS	engineered mutation	UNP Q16790

- Molecule 2 is ZINC ION (three-letter code: ZN) (formula: Zn).

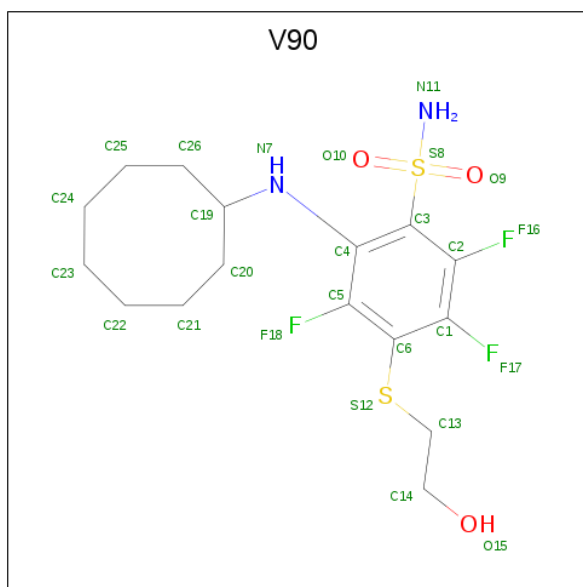
Mol	Chain	Residues	Atoms		ZeroOcc	AltConf
2	B	1	Total	Zn	0	0
			1	1		
2	A	1	Total	Zn	0	0
			1	1		

Continued on next page...

Continued from previous page...

Mol	Chain	Residues	Atoms		ZeroOcc	AltConf
2	D	1	Total	Zn	0	0
			1	1		
2	C	1	Total	Zn	0	0
			1	1		

- Molecule 3 is 2-(cyclooctylamino)-3,5,6-trifluoro-4-[(2-hydroxyethyl)sulfanyl]benzenesulfonamide (three-letter code: V90) (formula: $C_{16}H_{23}F_3N_2O_3S_2$) (labeled as "Ligand of Interest" by author).



Mol	Chain	Residues	Atoms						ZeroOcc	AltConf
3	A	1	Total 26	C 16	F 3	N 2	O 3	S 2	0	0
3	B	1	Total 26	C 16	F 3	N 2	O 3	S 2	0	0
3	C	1	Total 26	C 16	F 3	N 2	O 3	S 2	0	0
3	D	1	Total 26	C 16	F 3	N 2	O 3	S 2	0	0

- Molecule 4 is water.

Mol	Chain	Residues	Atoms		ZeroOcc	AltConf
4	A	199	Total	O	0	0
			199	199		
4	B	239	Total	O	0	0
			239	239		

Continued on next page...

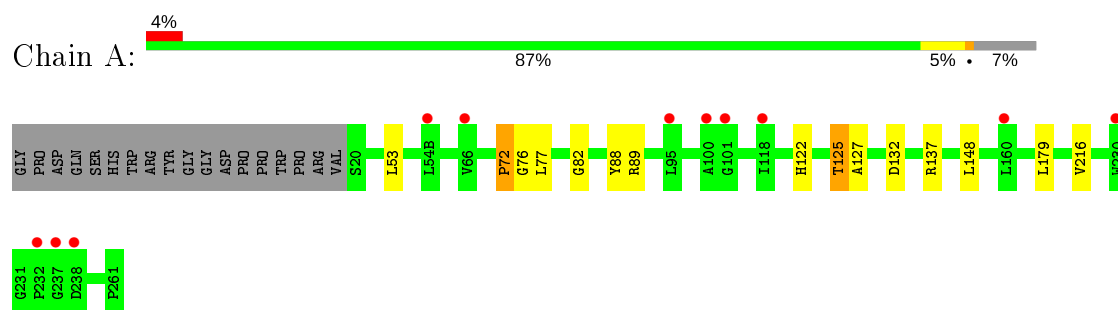
Continued from previous page...

Mol	Chain	Residues	Atoms		ZeroOcc	AltConf
4	C	179	Total	O	0	0
			179	179		
4	D	175	Total	O	0	0
			175	175		

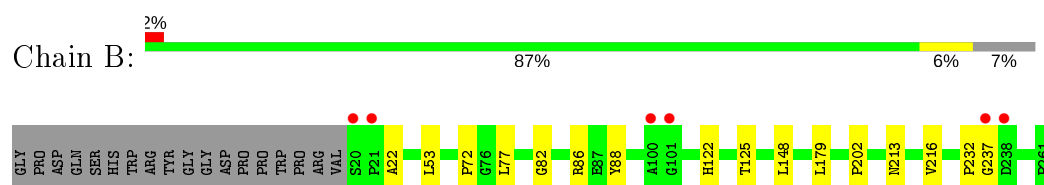
3 Residue-property plots [i](#)

These plots are drawn for all protein, RNA and DNA chains in the entry. The first graphic for a chain summarises the proportions of the various outlier classes displayed in the second graphic. The second graphic shows the sequence view annotated by issues in geometry and electron density. Residues are color-coded according to the number of geometric quality criteria for which they contain at least one outlier: green = 0, yellow = 1, orange = 2 and red = 3 or more. A red dot above a residue indicates a poor fit to the electron density ($RSRZ > 2$). Stretches of 2 or more consecutive residues without any outlier are shown as a green connector. Residues present in the sample, but not in the model, are shown in grey.

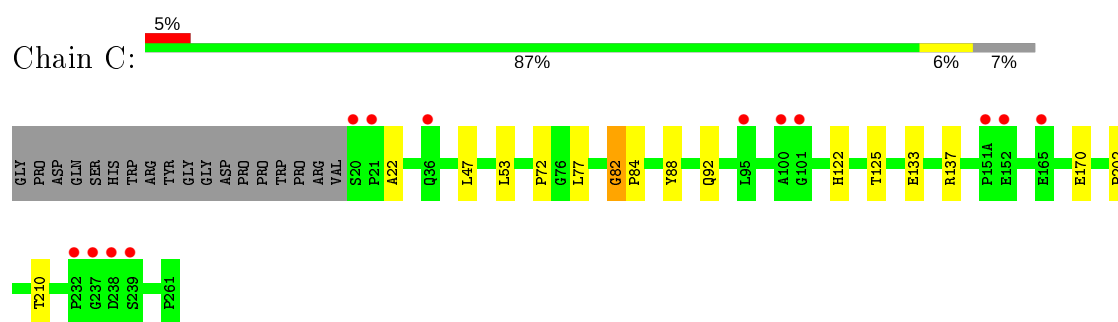
- Molecule 1: Carbonic anhydrase 9



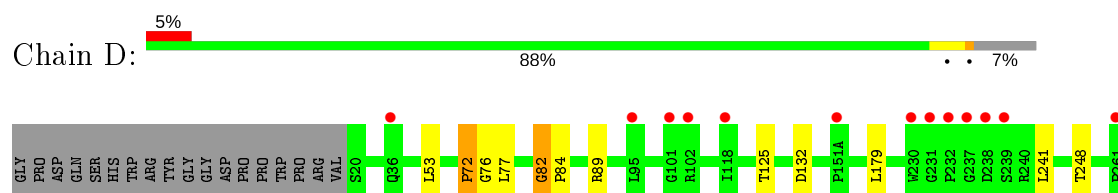
- Molecule 1: Carbonic anhydrase 9



- Molecule 1: Carbonic anhydrase 9



- Molecule 1: Carbonic anhydrase 9



4 Data and refinement statistics

Property	Value	Source
Space group	H 3	Depositor
Cell constants a, b, c, α , β , γ	152.86Å 152.86Å 171.47Å 90.00° 90.00° 120.00°	Depositor
Resolution (Å)	26.00 – 1.91 25.78 – 1.91	Depositor EDS
% Data completeness (in resolution range)	97.1 (26.00-1.91) 97.1 (25.78-1.91)	Depositor EDS
R_{merge}	0.08	Depositor
R_{sym}	(Not available)	Depositor
$\langle I/\sigma(I) \rangle$ ¹	1.79 (at 1.91Å)	Xtriage
Refinement program	REFMAC 5.8.0158	Depositor
R, R_{free}	0.168 , 0.204 0.177 , 0.210	Depositor DCC
R_{free} test set	5544 reflections (4.93%)	wwPDB-VP
Wilson B-factor (Å ²)	24.4	Xtriage
Anisotropy	0.013	Xtriage
Bulk solvent k_{sol} (e/Å ³), B_{sol} (Å ²)	0.38 , 52.3	EDS
L-test for twinning ²	$\langle L \rangle = 0.49$, $\langle L^2 \rangle = 0.32$	Xtriage
Estimated twinning fraction	0.022 for h,-h-k,-l	Xtriage
F_o, F_c correlation	0.96	EDS
Total number of atoms	8351	wwPDB-VP
Average B, all atoms (Å ²)	30.0	wwPDB-VP

Xtriage's analysis on translational NCS is as follows: *The largest off-origin peak in the Patterson function is 5.06% of the height of the origin peak. No significant pseudotranslation is detected.*

¹Intensities estimated from amplitudes.

²Theoretical values of $\langle |L| \rangle$, $\langle L^2 \rangle$ for acentric reflections are 0.5, 0.333 respectively for untwinned datasets, and 0.375, 0.2 for perfectly twinned datasets.

5 Model quality

5.1 Standard geometry

Bond lengths and bond angles in the following residue types are not validated in this section: V90, ZN

The Z score for a bond length (or angle) is the number of standard deviations the observed value is removed from the expected value. A bond length (or angle) with $|Z| > 5$ is considered an outlier worth inspection. RMSZ is the root-mean-square of all Z scores of the bond lengths (or angles).

Mol	Chain	Bond lengths		Bond angles	
		RMSZ	# Z >5	RMSZ	# Z >5
1	A	0.85	3/1910 (0.2%)	0.72	1/2603 (0.0%)
1	B	0.74	3/1960 (0.2%)	0.75	1/2673 (0.0%)
1	C	0.94	3/1897 (0.2%)	0.70	0/2585
1	D	0.88	3/1937 (0.2%)	0.69	1/2640 (0.0%)
All	All	0.85	12/7704 (0.2%)	0.72	3/10501 (0.0%)

All (12) bond length outliers are listed below:

Mol	Chain	Res	Type	Atoms	Z	Observed(Å)	Ideal(Å)
1	C	82	GLY	C-N	27.82	1.87	1.34
1	D	72	PRO	C-N	21.73	1.72	1.33
1	D	82	GLY	C-N	20.17	1.72	1.34
1	A	72	PRO	C-N	19.60	1.68	1.33
1	C	72	PRO	C-N	17.09	1.63	1.33
1	A	82	GLY	C-N	16.17	1.65	1.34
1	A	125	THR	C-N	14.73	1.68	1.34
1	B	82	GLY	C-N	13.44	1.59	1.34
1	B	125	THR	C-N	12.48	1.62	1.34
1	D	125	THR	C-N	12.43	1.62	1.34
1	C	125	THR	C-N	11.08	1.59	1.34
1	B	72	PRO	C-N	9.22	1.49	1.33

All (3) bond angle outliers are listed below:

Mol	Chain	Res	Type	Atoms	Z	Observed(°)	Ideal(°)
1	D	132	ASP	CB-CG-OD1	5.33	123.10	118.30
1	B	86	ARG	NE-CZ-NH1	5.32	122.96	120.30
1	A	132	ASP	CB-CG-OD1	5.22	123.00	118.30

There are no chirality outliers.

There are no planarity outliers.

5.2 Too-close contacts

In the following table, the Non-H and H(model) columns list the number of non-hydrogen atoms and hydrogen atoms in the chain respectively. The H(added) column lists the number of hydrogen atoms added and optimized by MolProbity. The Clashes column lists the number of clashes within the asymmetric unit, whereas Symm-Clashes lists symmetry related clashes.

Mol	Chain	Non-H	H(model)	H(added)	Clashes	Symm-Clashes
1	A	1854	0	1821	10	0
1	B	1883	0	1873	6	0
1	C	1845	0	1807	8	0
1	D	1869	0	1848	11	0
2	A	1	0	0	0	0
2	B	1	0	0	0	0
2	C	1	0	0	0	0
2	D	1	0	0	0	0
3	A	26	0	22	0	0
3	B	26	0	22	0	0
3	C	26	0	22	0	0
3	D	26	0	23	0	0
4	A	199	0	0	0	0
4	B	239	0	0	0	0
4	C	179	0	0	0	0
4	D	175	0	0	0	0
All	All	8351	0	7438	35	0

The all-atom clashscore is defined as the number of clashes found per 1000 atoms (including hydrogen atoms). The all-atom clashscore for this structure is 2.

All (35) close contacts within the same asymmetric unit are listed below, sorted by their clash magnitude.

Atom-1	Atom-2	Interatomic distance (Å)	Clash overlap (Å)
1:A:125:THR:C	1:A:127:ALA:N	1.67	1.43
1:A:72:PRO:C	1:A:76:GLY:N	1.68	1.43
1:D:72:PRO:C	1:D:76:GLY:N	1.72	1.42
1:D:82:GLY:C	1:D:84:PRO:N	1.72	1.40
1:C:82:GLY:C	1:C:84:PRO:N	1.87	1.27
1:D:89[B]:ARG:CG	1:D:89[B]:ARG:HH21	1.68	1.06
1:D:89[B]:ARG:HG2	1:D:89[B]:ARG:HH21	1.26	0.99
1:D:89[B]:ARG:NH2	1:D:89[B]:ARG:HG2	1.92	0.81

Continued on next page...

Continued from previous page...

Atom-1	Atom-2	Interatomic distance (Å)	Clash overlap (Å)
1:D:89[B]:ARG:HG3	1:D:89[B]:ARG:HH21	1.57	0.69
1:A:72:PRO:C	1:A:76:GLY:CA	2.63	0.66
1:C:133[A]:GLU:HA	1:C:133[A]:GLU:OE1	2.01	0.61
1:D:82:GLY:C	1:D:84:PRO:CA	2.68	0.60
1:A:72:PRO:CA	1:A:76:GLY:N	2.64	0.58
1:D:72:PRO:C	1:D:76:GLY:CA	2.70	0.57
1:C:82:GLY:CA	1:C:84:PRO:N	2.65	0.57
1:A:88:TYR:O	1:A:89:ARG:NH2	2.36	0.57
1:A:53:LEU:HD21	1:A:77:LEU:HD11	1.88	0.56
1:C:82:GLY:C	1:C:84:PRO:CA	2.72	0.56
1:A:125:THR:C	1:A:127:ALA:CA	2.69	0.56
1:B:232:PRO:C	1:B:237:GLY:N	2.62	0.53
1:B:148:LEU:HD22	1:B:216[B]:VAL:CG2	2.40	0.51
1:A:148:LEU:HD22	1:A:216:VAL:CG2	2.40	0.51
1:D:82:GLY:CA	1:D:84:PRO:N	2.68	0.50
1:D:89[B]:ARG:NH2	1:D:89[B]:ARG:CG	2.41	0.50
1:D:53:LEU:HD21	1:D:77:LEU:HD11	1.93	0.50
1:B:53:LEU:HD21	1:B:77:LEU:HD11	1.94	0.49
1:C:88:TYR:HB3	1:C:122:HIS:HB3	1.96	0.47
1:C:53:LEU:HD21	1:C:77:LEU:HD11	1.96	0.47
1:B:148:LEU:HD22	1:B:216[B]:VAL:HG23	2.00	0.44
1:C:22:ALA:HB3	1:C:202:PRO:O	2.16	0.44
1:A:88:TYR:HB3	1:A:122:HIS:HB3	2.00	0.43
1:C:47:LEU:HD11	1:C:210:THR:HG21	2.01	0.43
1:B:88:TYR:HB3	1:B:122:HIS:HB3	1.99	0.42
1:B:22:ALA:HB3	1:B:202:PRO:O	2.21	0.40
1:A:125:THR:CA	1:A:127:ALA:N	2.73	0.40

There are no symmetry-related clashes.

5.3 Torsion angles ⓘ

5.3.1 Protein backbone ⓘ

In the following table, the Percentiles column shows the percent Ramachandran outliers of the chain as a percentile score with respect to all X-ray entries followed by that with respect to entries of similar resolution.

The Analysed column shows the number of residues for which the backbone conformation was analysed, and the total number of residues.

Mol	Chain	Analysed	Favoured	Allowed	Outliers	Percentiles	
1	A	237/257 (92%)	232 (98%)	5 (2%)	0	100	100
1	B	244/257 (95%)	240 (98%)	4 (2%)	0	100	100
1	C	236/257 (92%)	233 (99%)	3 (1%)	0	100	100
1	D	241/257 (94%)	237 (98%)	4 (2%)	0	100	100
All	All	958/1028 (93%)	942 (98%)	16 (2%)	0	100	100

There are no Ramachandran outliers to report.

5.3.2 Protein sidechains ⓘ

In the following table, the Percentiles column shows the percent sidechain outliers of the chain as a percentile score with respect to all X-ray entries followed by that with respect to entries of similar resolution.

The Analysed column shows the number of residues for which the sidechain conformation was analysed, and the total number of residues.

Mol	Chain	Analysed	Rotameric	Outliers	Percentiles	
1	A	196/210 (93%)	194 (99%)	2 (1%)	76	75
1	B	203/210 (97%)	201 (99%)	2 (1%)	76	75
1	C	195/210 (93%)	192 (98%)	3 (2%)	65	61
1	D	200/210 (95%)	196 (98%)	4 (2%)	55	49
All	All	794/840 (94%)	783 (99%)	11 (1%)	69	63

All (11) residues with a non-rotameric sidechain are listed below:

Mol	Chain	Res	Type
1	A	137	ARG
1	A	179	LEU
1	B	179	LEU
1	B	213	ASN
1	C	92	GLN
1	C	137	ARG
1	C	170	GLU
1	D	179	LEU
1	D	241	LEU
1	D	248[A]	THR
1	D	248[B]	THR

Some sidechains can be flipped to improve hydrogen bonding and reduce clashes. All (8) such

sidechains are listed below:

Mol	Chain	Res	Type
1	A	36	GLN
1	A	159	GLN
1	B	36	GLN
1	B	52	GLN
1	B	213	ASN
1	C	159	GLN
1	C	213	ASN
1	D	214	GLN

5.3.3 RNA [i](#)

There are no RNA molecules in this entry.

5.4 Non-standard residues in protein, DNA, RNA chains [i](#)

There are no non-standard protein/DNA/RNA residues in this entry.

5.5 Carbohydrates [i](#)

There are no carbohydrates in this entry.

5.6 Ligand geometry [i](#)

Of 8 ligands modelled in this entry, 4 are monoatomic - leaving 4 for Mogul analysis.

In the following table, the Counts columns list the number of bonds (or angles) for which Mogul statistics could be retrieved, the number of bonds (or angles) that are observed in the model and the number of bonds (or angles) that are defined in the Chemical Component Dictionary. The Link column lists molecule types, if any, to which the group is linked. The Z score for a bond length (or angle) is the number of standard deviations the observed value is removed from the expected value. A bond length (or angle) with $|Z| > 2$ is considered an outlier worth inspection. RMSZ is the root-mean-square of all Z scores of the bond lengths (or angles).

Mol	Type	Chain	Res	Link	Bond lengths			Bond angles		
					Counts	RMSZ	# Z > 2	Counts	RMSZ	# Z > 2
3	V90	A	302	2	26,27,27	3.43	8 (30%)	32,38,38	1.23	3 (9%)
3	V90	D	302	2	26,27,27	3.58	7 (26%)	32,38,38	1.45	6 (18%)
3	V90	B	302	2	26,27,27	3.50	7 (26%)	32,38,38	1.65	6 (18%)
3	V90	C	302	2	26,27,27	3.59	7 (26%)	32,38,38	1.56	6 (18%)

In the following table, the Chirals column lists the number of chiral outliers, the number of chiral centers analysed, the number of these observed in the model and the number defined in the Chemical Component Dictionary. Similar counts are reported in the Torsion and Rings columns. '-' means no outliers of that kind were identified.

Mol	Type	Chain	Res	Link	Chirals	Torsions	Rings
3	V90	A	302	2	-	6/14/24/24	0/2/2/2
3	V90	D	302	2	-	7/14/24/24	0/2/2/2
3	V90	B	302	2	-	7/14/24/24	0/2/2/2
3	V90	C	302	2	-	5/14/24/24	0/2/2/2

All (29) bond length outliers are listed below:

Mol	Chain	Res	Type	Atoms	Z	Observed(Å)	Ideal(Å)
3	D	302	V90	C3-S8	-10.78	1.61	1.79
3	C	302	V90	C3-S8	-9.89	1.63	1.79
3	B	302	V90	C3-S8	-9.66	1.63	1.79
3	A	302	V90	C3-S8	-9.54	1.63	1.79
3	B	302	V90	C6-S12	-7.06	1.69	1.77
3	A	302	V90	C4-C5	6.69	1.50	1.39
3	C	302	V90	C6-C5	6.56	1.48	1.39
3	C	302	V90	C4-C5	6.52	1.50	1.39
3	B	302	V90	C6-C5	6.50	1.48	1.39
3	D	302	V90	C2-C1	6.47	1.49	1.37
3	B	302	V90	C4-C5	6.46	1.49	1.39
3	C	302	V90	C6-S12	-6.20	1.70	1.77
3	D	302	V90	C6-S12	-6.06	1.70	1.77
3	C	302	V90	C6-C1	6.03	1.48	1.39
3	A	302	V90	C2-C1	6.01	1.48	1.37
3	D	302	V90	C6-C5	5.94	1.48	1.39
3	C	302	V90	C2-C1	5.83	1.48	1.37
3	A	302	V90	C6-C1	5.74	1.47	1.39
3	D	302	V90	C2-C3	5.73	1.49	1.39
3	A	302	V90	C6-C5	5.60	1.47	1.39
3	B	302	V90	C6-C1	5.54	1.47	1.39
3	A	302	V90	C2-C3	5.50	1.48	1.39
3	D	302	V90	C6-C1	5.43	1.47	1.39
3	C	302	V90	C2-C3	5.38	1.48	1.39
3	D	302	V90	C4-C5	5.36	1.48	1.39
3	A	302	V90	C6-S12	-5.32	1.71	1.77
3	B	302	V90	C2-C1	5.11	1.46	1.37
3	B	302	V90	C2-C3	4.89	1.47	1.39
3	A	302	V90	C26-C19	2.05	1.55	1.52

All (21) bond angle outliers are listed below:

Mol	Chain	Res	Type	Atoms	Z	Observed(°)	Ideal(°)
3	B	302	V90	O9-S8-O10	-4.84	110.81	118.76
3	D	302	V90	O9-S8-O10	-4.51	111.34	118.76
3	C	302	V90	O9-S8-C3	4.05	113.32	107.30
3	C	302	V90	O9-S8-O10	-3.91	112.33	118.76
3	B	302	V90	O10-S8-C3	3.51	112.51	107.30
3	B	302	V90	C13-S12-C6	3.35	112.43	101.90
3	D	302	V90	C3-S8-N11	3.14	114.05	108.26
3	C	302	V90	O10-S8-N11	2.96	111.75	107.36
3	C	302	V90	C13-S12-C6	2.96	111.20	101.90
3	B	302	V90	C1-C6-S12	-2.76	115.72	121.80
3	C	302	V90	O9-S8-N11	-2.76	103.28	107.36
3	A	302	V90	F18-C5-C6	-2.70	116.26	119.86
3	B	302	V90	C5-C4-C3	2.59	120.66	116.14
3	A	302	V90	C13-S12-C6	2.45	109.61	101.90
3	B	302	V90	C1-C6-C5	2.36	120.23	116.18
3	A	302	V90	O9-S8-O10	-2.26	115.04	118.76
3	C	302	V90	C1-C6-C5	2.17	119.90	116.18
3	D	302	V90	C13-S12-C6	2.16	108.69	101.90
3	D	302	V90	F18-C5-C6	-2.10	117.06	119.86
3	D	302	V90	C5-C4-C3	2.08	119.77	116.14
3	D	302	V90	F17-C1-C6	-2.02	117.16	119.86

There are no chirality outliers.

All (25) torsion outliers are listed below:

Mol	Chain	Res	Type	Atoms
3	A	302	V90	S12-C13-C14-O15
3	D	302	V90	S12-C13-C14-O15
3	D	302	V90	C4-C3-S8-N11
3	D	302	V90	C2-C3-S8-N11
3	B	302	V90	C14-C13-S12-C6
3	C	302	V90	C4-C3-S8-O10
3	D	302	V90	C4-C3-S8-O10
3	B	302	V90	C4-C3-S8-O9
3	C	302	V90	C4-C3-S8-N11
3	C	302	V90	C2-C3-S8-N11
3	A	302	V90	C2-C3-S8-N11
3	B	302	V90	C4-C3-S8-N11
3	B	302	V90	C2-C3-S8-N11
3	A	302	V90	C4-C3-S8-O10
3	A	302	V90	C3-C4-N7-C19

Continued on next page...

Continued from previous page...

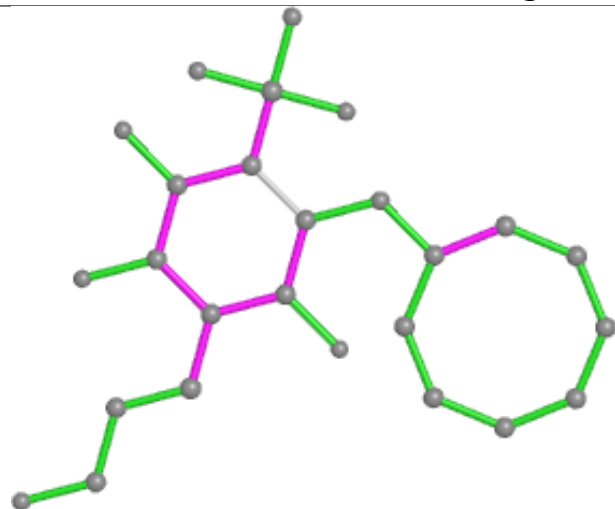
Mol	Chain	Res	Type	Atoms
3	A	302	V90	C4-C3-S8-N11
3	B	302	V90	C2-C3-S8-O10
3	C	302	V90	C14-C13-S12-C6
3	C	302	V90	C3-C4-N7-C19
3	D	302	V90	C3-C4-N7-C19
3	B	302	V90	C5-C6-S12-C13
3	A	302	V90	C26-C19-N7-C4
3	D	302	V90	C26-C19-N7-C4
3	D	302	V90	C20-C19-N7-C4
3	B	302	V90	C3-C4-N7-C19

There are no ring outliers.

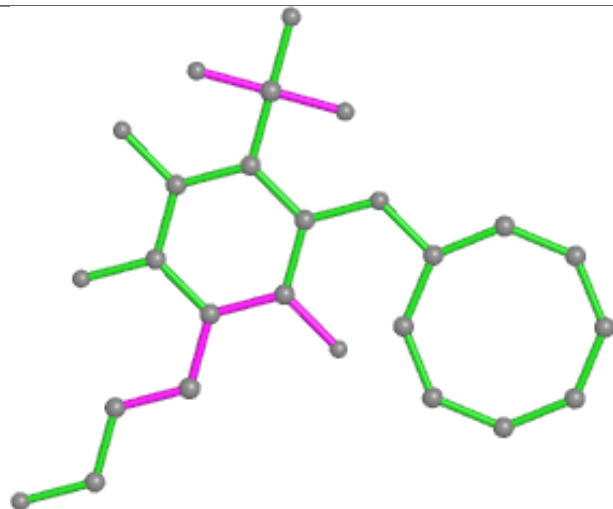
No monomer is involved in short contacts.

The following is a two-dimensional graphical depiction of Mogul quality analysis of bond lengths, bond angles, torsion angles, and ring geometry for all instances of the Ligand of Interest. In addition, ligands with molecular weight > 250 and outliers as shown on the validation Tables will also be included. For torsion angles, if less than 5% of the Mogul distribution of torsion angles is within 10 degrees of the torsion angle in question, then that torsion angle is considered an outlier. Any bond that is central to one or more torsion angles identified as an outlier by Mogul will be highlighted in the graph. For rings, the root-mean-square deviation (RMSD) between the ring in question and similar rings identified by Mogul is calculated over all ring torsion angles. If the average RMSD is greater than 60 degrees and the minimal RMSD between the ring in question and any Mogul-identified rings is also greater than 60 degrees, then that ring is considered an outlier. The outliers are highlighted in purple. The color gray indicates Mogul did not find sufficient equivalents in the CSD to analyse the geometry.

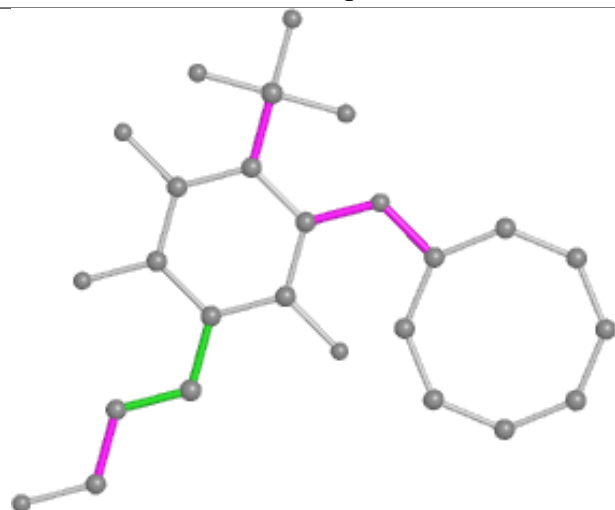
Ligand V90 A 302



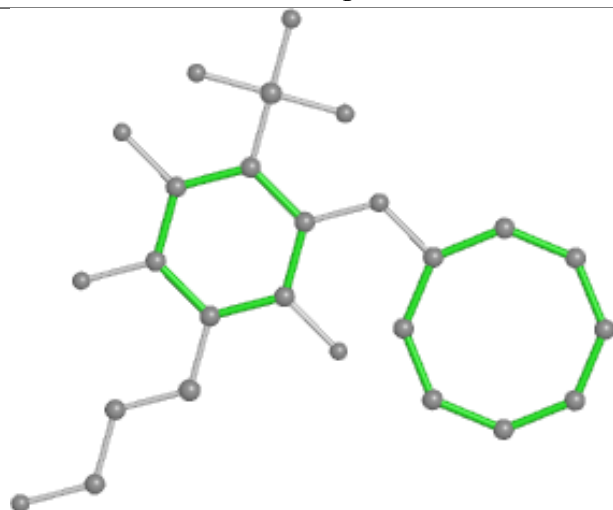
Bond lengths



Bond angles

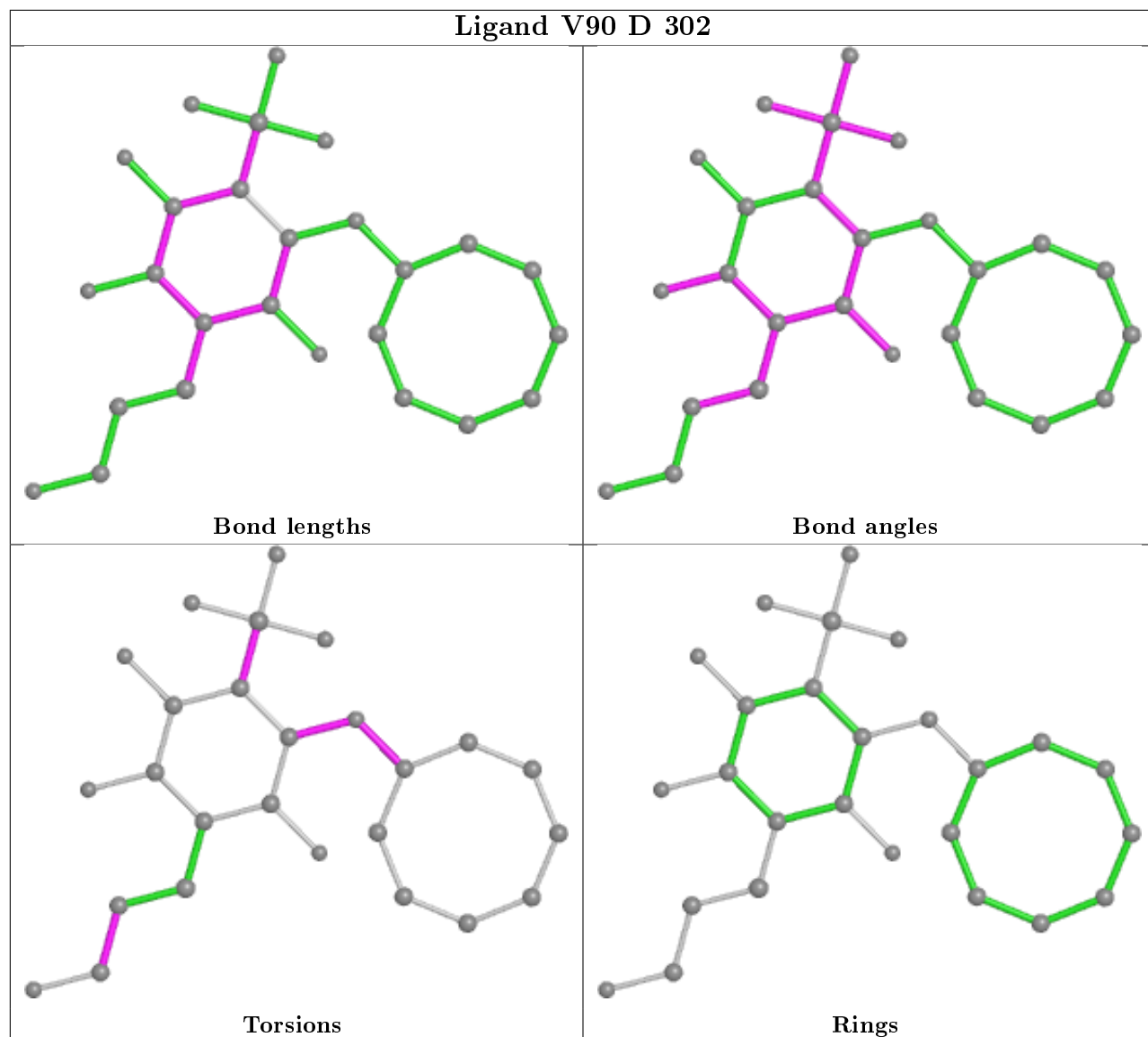


Torsions

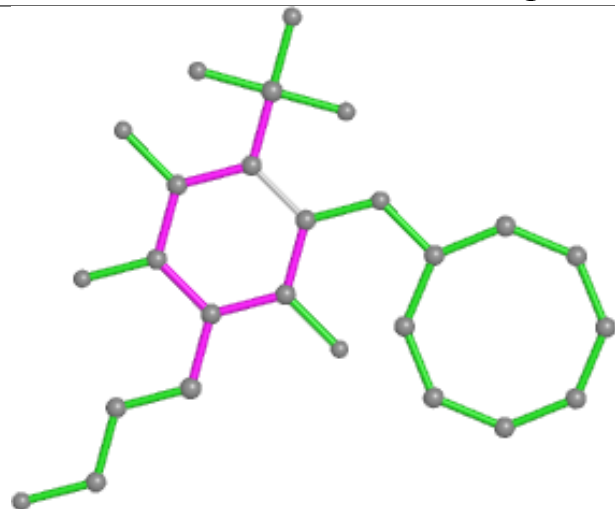


Rings

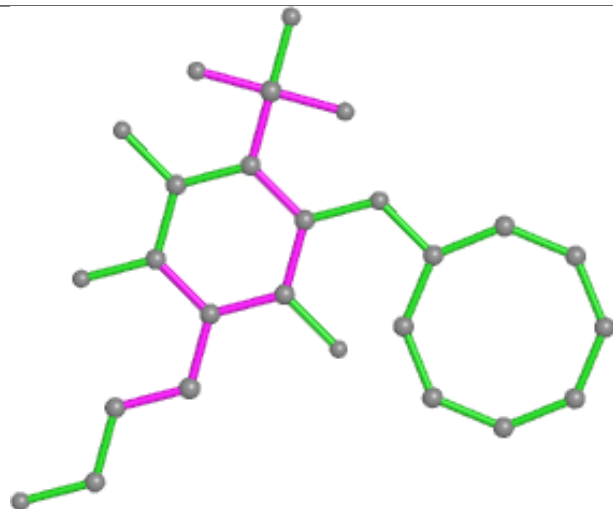
Ligand V90 D 302



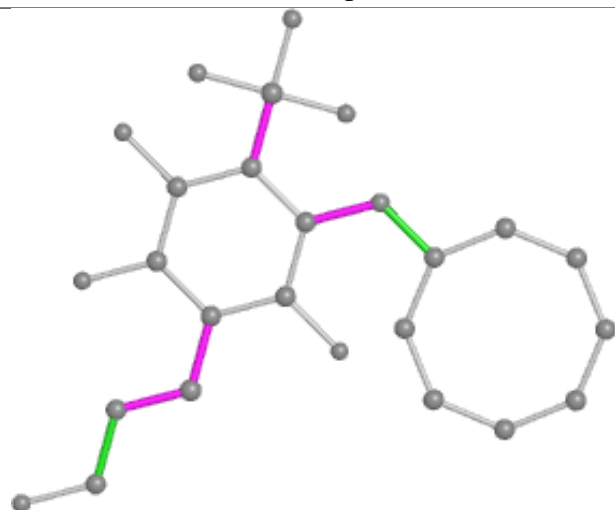
Ligand V90 B 302



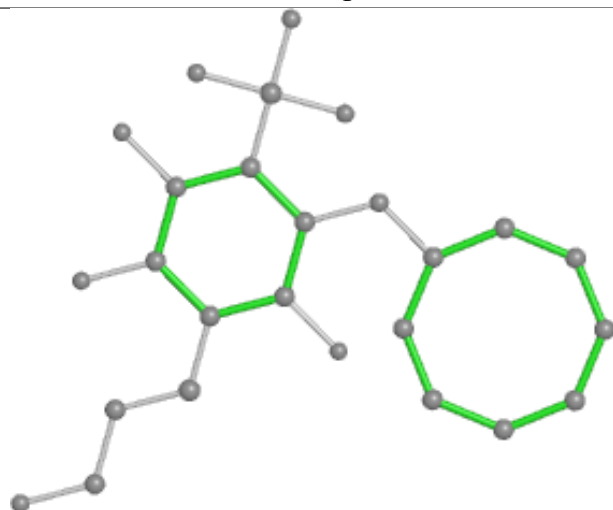
Bond lengths



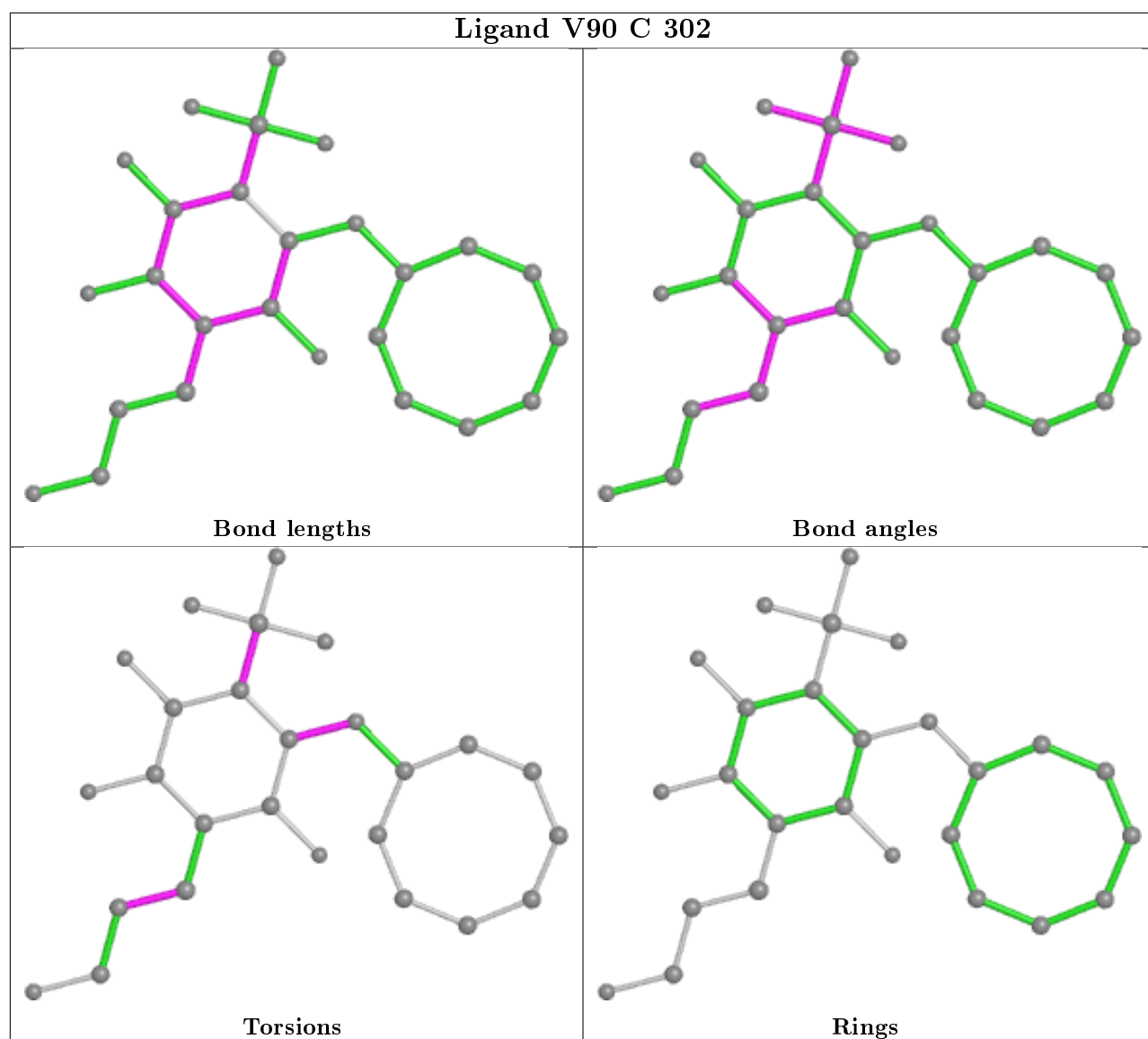
Bond angles



Torsions



Rings



5.7 Other polymers [i](#)

There are no such residues in this entry.

5.8 Polymer linkage issues [i](#)

The following chains have linkage breaks:

Mol	Chain	Number of breaks
1	A	4
1	D	4
1	C	3
1	B	2

All chain breaks are listed below:

Model	Chain	Residue-1	Atom-1	Residue-2	Atom-2	Distance (Å)
1	D	232:PRO	C	237:GLY	N	2.96
1	C	232:PRO	C	237:GLY	N	2.83
1	A	232:PRO	C	237:GLY	N	2.77
1	B	232:PRO	C	237:GLY	N	2.62
1	C	82:GLY	C	84:PRO	N	1.87
1	D	72:PRO	C	76:GLY	N	1.72
1	D	82:GLY	C	84:PRO	N	1.72
1	A	72:PRO	C	76:GLY	N	1.68
1	A	125:THR	C	127:ALA	N	1.67
1	A	82:GLY	C	84:PRO	N	1.65
1	C	72:PRO	C	76:GLY	N	1.63
1	B	125:THR	C	127:ALA	N	1.62
1	D	125:THR	C	127:ALA	N	1.62

6 Fit of model and data ⓘ

6.1 Protein, DNA and RNA chains ⓘ

In the following table, the column labelled ‘#RSRZ> 2’ contains the number (and percentage) of RSRZ outliers, followed by percent RSRZ outliers for the chain as percentile scores relative to all X-ray entries and entries of similar resolution. The OWAB column contains the minimum, median, 95th percentile and maximum values of the occupancy-weighted average B-factor per residue. The column labelled ‘Q< 0.9’ lists the number of (and percentage) of residues with an average occupancy less than 0.9.

Mol	Chain	Analysed	<RSRZ>	#RSRZ>2	OWAB(Å ²)	Q<0.9
1	A	239/257 (92%)	-0.13	11 (4%) 32 35	16, 25, 51, 76	0
1	B	239/257 (92%)	-0.36	6 (2%) 57 60	14, 21, 40, 74	0
1	C	239/257 (92%)	0.03	13 (5%) 25 29	20, 31, 52, 80	0
1	D	239/257 (92%)	0.09	13 (5%) 25 29	19, 31, 55, 82	0
All	All	956/1028 (92%)	-0.10	43 (4%) 33 36	14, 27, 51, 82	0

All (43) RSRZ outliers are listed below:

Mol	Chain	Res	Type	RSRZ
1	D	237	GLY	7.6
1	C	237	GLY	7.2
1	B	237	GLY	4.9
1	A	237	GLY	4.9
1	A	101	GLY	4.5
1	D	238	ASP	4.2
1	C	238	ASP	4.2
1	A	238	ASP	4.1
1	A	100	ALA	4.1
1	B	100	ALA	3.7
1	B	238	ASP	3.7
1	A	232	PRO	3.7
1	D	101	GLY	3.7
1	C	101	GLY	3.6
1	D	230	TRP	3.3
1	C	151(A)	PRO	3.2
1	C	100	ALA	3.0
1	D	36	GLN	2.8
1	D	232	PRO	2.8
1	D	261	PRO	2.7
1	D	151(A)	PRO	2.6

Continued on next page...

Continued from previous page...

Mol	Chain	Res	Type	RSRZ
1	C	21	PRO	2.5
1	A	118	ILE	2.5
1	C	20	SER	2.5
1	C	232	PRO	2.4
1	C	95	LEU	2.4
1	D	95[A]	LEU	2.4
1	B	21	PRO	2.4
1	A	230	TRP	2.4
1	D	102	ARG	2.4
1	D	239	SER	2.3
1	D	118	ILE	2.3
1	A	54(B)	LEU	2.3
1	C	152	GLU	2.3
1	C	239	SER	2.3
1	B	20	SER	2.2
1	A	95	LEU	2.2
1	B	101	GLY	2.2
1	A	66	VAL	2.2
1	A	160	LEU	2.1
1	C	165	GLU	2.0
1	C	36	GLN	2.0
1	D	231	GLY	2.0

6.2 Non-standard residues in protein, DNA, RNA chains [i](#)

There are no non-standard protein/DNA/RNA residues in this entry.

6.3 Carbohydrates [i](#)

There are no carbohydrates in this entry.

6.4 Ligands [i](#)

In the following table, the Atoms column lists the number of modelled atoms in the group and the number defined in the chemical component dictionary. The B-factors column lists the minimum, median, 95th percentile and maximum values of B factors of atoms in the group. The column labelled 'Q< 0.9' lists the number of atoms with occupancy less than 0.9.

Mol	Type	Chain	Res	Atoms	RSCC	RSR	B-factors(Å ²)	Q<0.9
3	V90	C	302	26/26	0.97	0.10	28,37,48,56	0

Continued on next page...

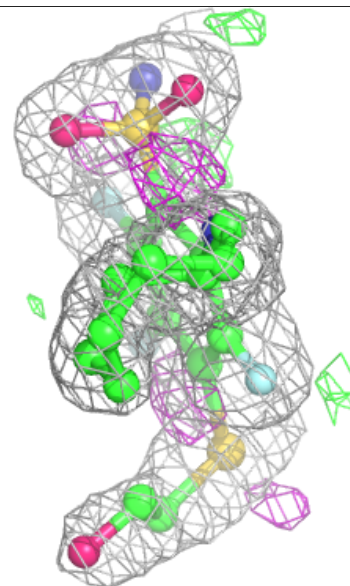
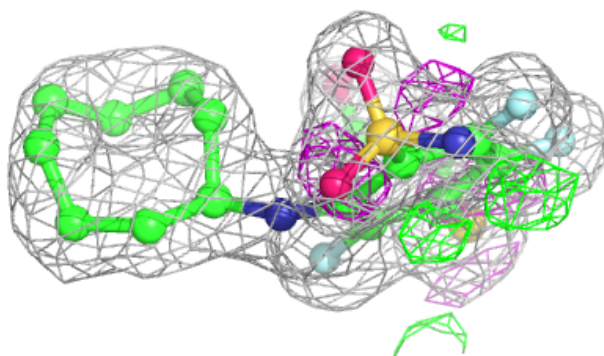
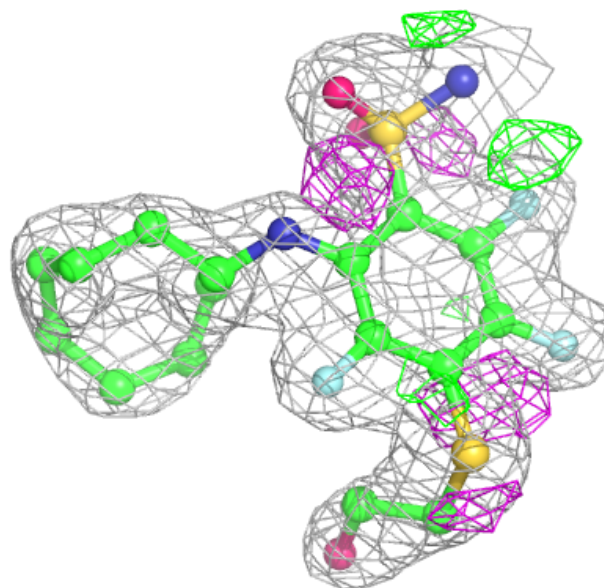
Continued from previous page...

Mol	Type	Chain	Res	Atoms	RSCC	RSR	B-factors(\AA^2)	Q<0.9
3	V90	A	302	26/26	0.97	0.08	23,29,42,48	0
3	V90	D	302	26/26	0.97	0.09	30,35,48,51	0
3	V90	B	302	26/26	0.97	0.11	24,36,49,54	0
2	ZN	D	301	1/1	0.99	0.06	26,26,26,26	0
2	ZN	B	301	1/1	1.00	0.06	18,18,18,18	0
2	ZN	C	301	1/1	1.00	0.07	23,23,23,23	0
2	ZN	A	301	1/1	1.00	0.07	21,21,21,21	0

The following is a graphical depiction of the model fit to experimental electron density of all instances of the Ligand of Interest. In addition, ligands with molecular weight > 250 and outliers as shown on the geometry validation Tables will also be included. Each fit is shown from different orientation to approximate a three-dimensional view.

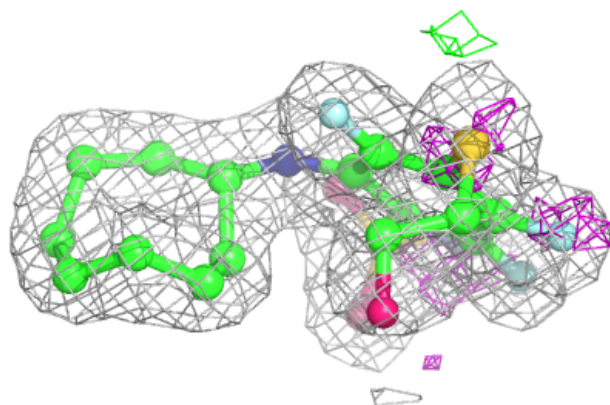
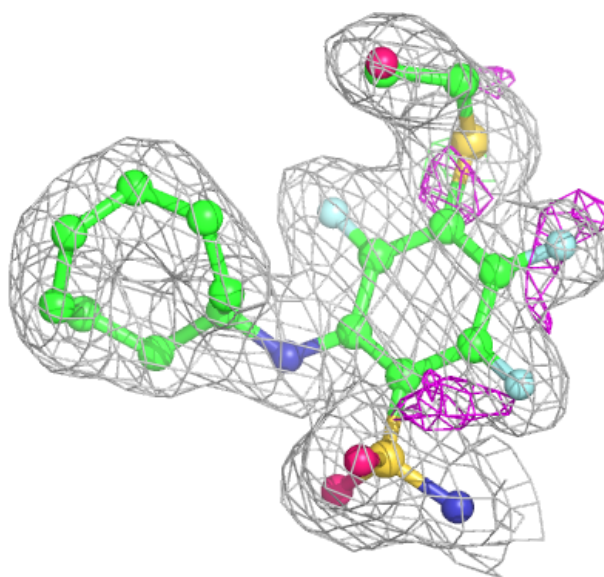
Electron density around V90 C 302:

2mF_o-DF_c (at 0.7 rmsd) in gray
mF_o-DF_c (at 3 rmsd) in purple (negative)
and green (positive)



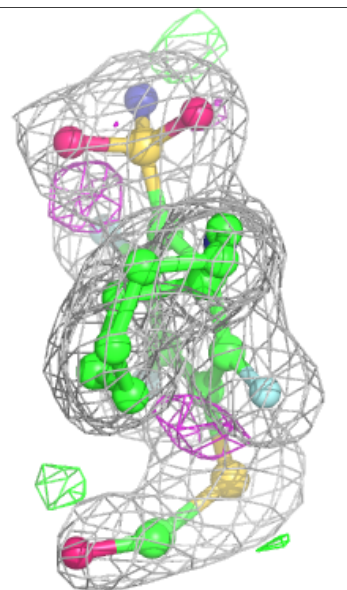
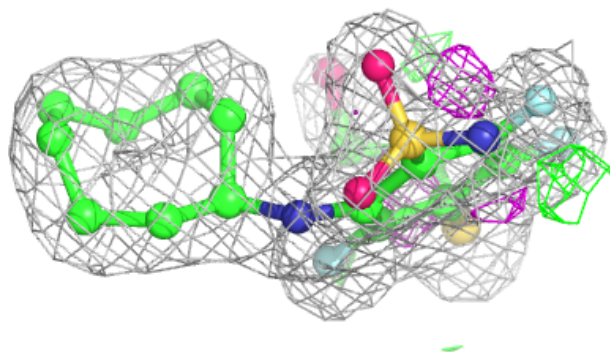
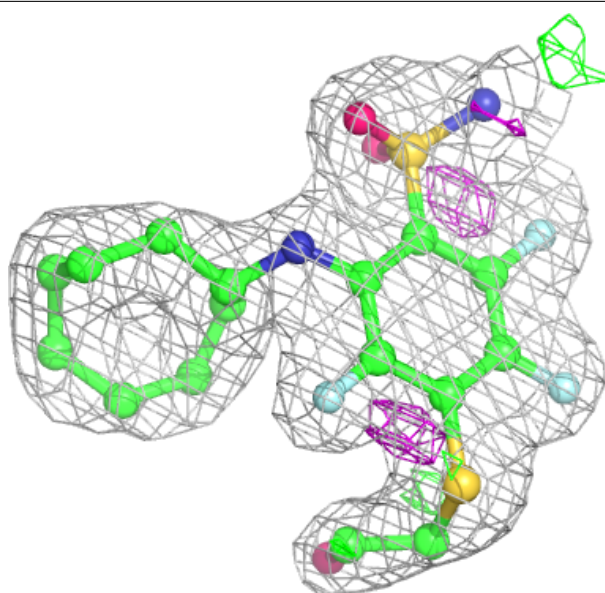
Electron density around V90 A 302:

$2mF_o-DF_c$ (at 0.7 rmsd) in gray
 mF_o-DF_c (at 3 rmsd) in purple (negative)
and green (positive)



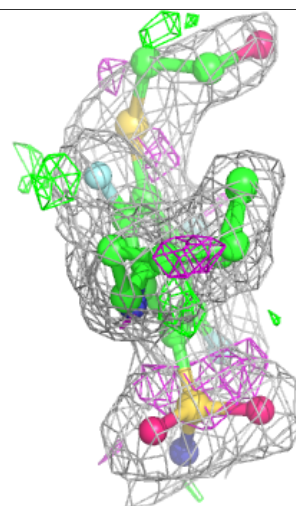
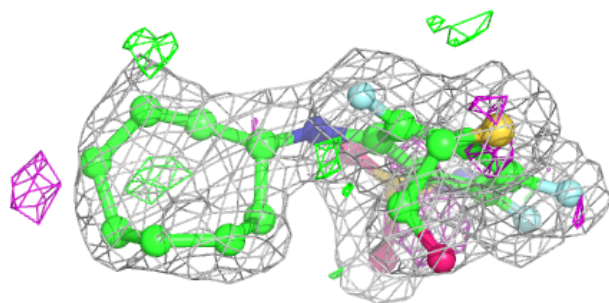
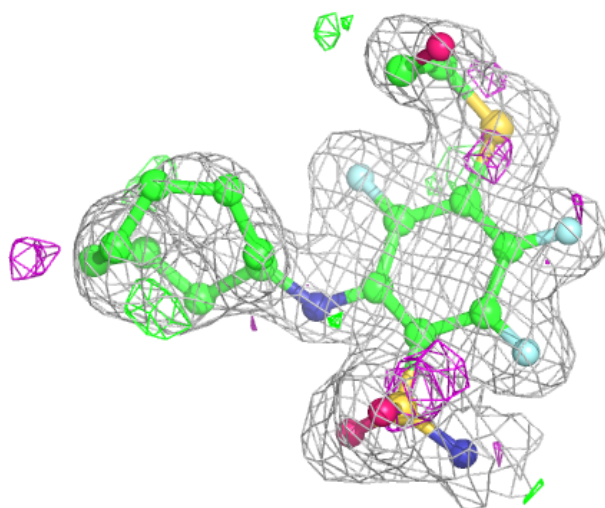
Electron density around V90 D 302:

$2mF_o-DF_c$ (at 0.7 rmsd) in gray
 mF_o-DF_c (at 3 rmsd) in purple (negative)
and green (positive)



Electron density around V90 B 302:

$2mF_o-DF_c$ (at 0.7 rmsd) in gray
 mF_o-DF_c (at 3 rmsd) in purple (negative)
and green (positive)



6.5 Other polymers ⓘ

There are no such residues in this entry.