



Full wwPDB X-ray Structure Validation Report ⓘ

May 14, 2020 – 08:29 am BST

PDB ID : 4FGG
Title : S. aureus dihydrofolate reductase co-crystallized with propyl-DAP isobutenyl
-dihydrophthalazine inhibitor
Authors : Bourne, C.R.; Barrow, W.W.
Deposited on : 2012-06-04
Resolution : 2.30 Å(reported)

This is a Full wwPDB X-ray Structure Validation Report for a publicly released PDB entry.

We welcome your comments at validation@mail.wwpdb.org

A user guide is available at

<https://www.wwpdb.org/validation/2017/XrayValidationReportHelp>

with specific help available everywhere you see the ⓘ symbol.

The following versions of software and data (see [references ⓘ](#)) were used in the production of this report:

MolProbity : 4.02b-467
Mogul : 1.8.5 (274361), CSD as541be (2020)
Xtriage (Phenix) : 1.13
EDS : 2.11
buster-report : 1.1.7 (2018)
Percentile statistics : 20191225.v01 (using entries in the PDB archive December 25th 2019)
Refmac : 5.8.0158
CCP4 : 7.0.044 (Gargrove)
Ideal geometry (proteins) : Engh & Huber (2001)
Ideal geometry (DNA, RNA) : Parkinson et al. (1996)
Validation Pipeline (wwPDB-VP) : 2.11

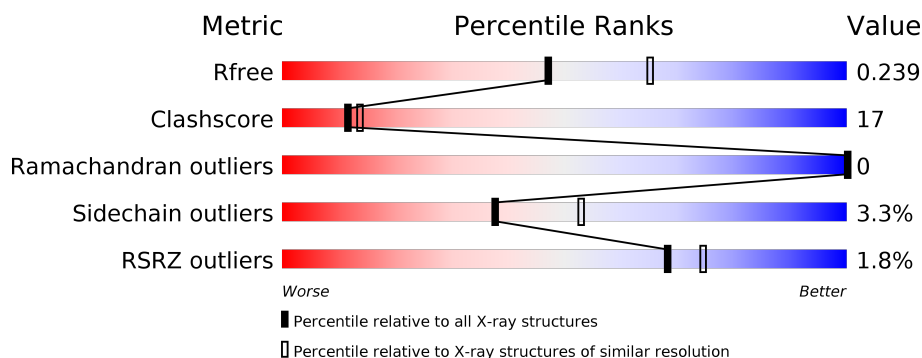
1 Overall quality at a glance

The following experimental techniques were used to determine the structure:

X-RAY DIFFRACTION

The reported resolution of this entry is 2.30 Å.

Percentile scores (ranging between 0-100) for global validation metrics of the entry are shown in the following graphic. The table shows the number of entries on which the scores are based.



Metric	Whole archive (#Entries)	Similar resolution (#Entries, resolution range(Å))
R_{free}	130704	5042 (2.30-2.30)
Clashscore	141614	5643 (2.30-2.30)
Ramachandran outliers	138981	5575 (2.30-2.30)
Sidechain outliers	138945	5575 (2.30-2.30)
RSRZ outliers	127900	4938 (2.30-2.30)

The table below summarises the geometric issues observed across the polymeric chains and their fit to the electron density. The red, orange, yellow and green segments on the lower bar indicate the fraction of residues that contain outliers for ≥ 3 , 2, 1 and 0 types of geometric quality criteria respectively. A grey segment represents the fraction of residues that are not modelled. The numeric value for each fraction is indicated below the corresponding segment, with a dot representing fractions $\leq 5\%$. The upper red bar (where present) indicates the fraction of residues that have poor fit to the electron density. The numeric value is given above the bar.

Mol	Chain	Length	Quality of chain
1	A	163	<div> <div>2%</div> <div>80%</div> <div>18%</div> <div>.</div> </div>

The following table lists non-polymeric compounds, carbohydrate monomers and non-standard residues in protein, DNA, RNA chains that are outliers for geometric or electron-density-fit criteria:

Mol	Type	Chain	Res	Chirality	Geometry	Clashes	Electron density
4	GOL	A	202	-	-	X	-

2 Entry composition [i](#)

There are 5 unique types of molecules in this entry. The entry contains 1559 atoms, of which 0 are hydrogens and 0 are deuteriums.

In the tables below, the ZeroOcc column contains the number of atoms modelled with zero occupancy, the AltConf column contains the number of residues with at least one atom in alternate conformation and the Trace column contains the number of residues modelled with at most 2 atoms.

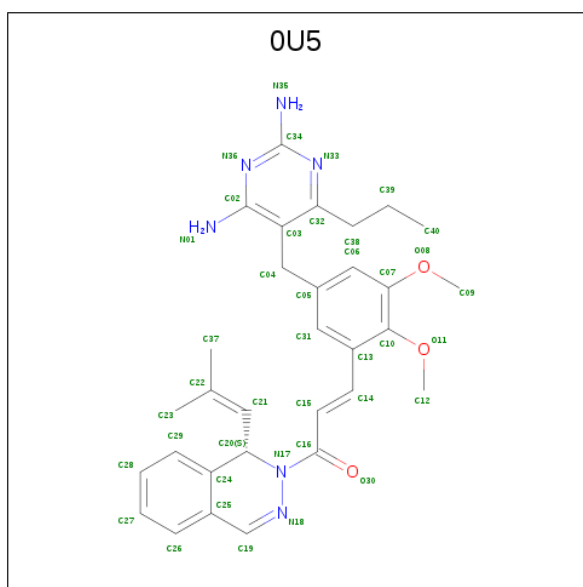
- Molecule 1 is a protein called Dihydrofolate reductase.

Mol	Chain	Residues	Atoms					ZeroOcc	AltConf	Trace
1	A	163	Total	C	N	O	S	0	0	0
			1322	855	223	240	4			

There are 4 discrepancies between the modelled and reference sequences:

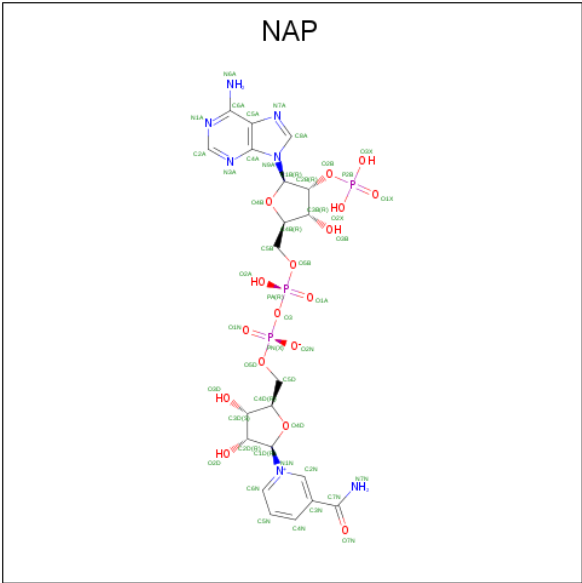
Chain	Residue	Modelled	Actual	Comment	Reference
A	159	LEU	-	EXPRESSION TAG	UNP P0A017
A	160	VAL	-	EXPRESSION TAG	UNP P0A017
A	161	PRO	-	EXPRESSION TAG	UNP P0A017
A	162	ARG	-	EXPRESSION TAG	UNP P0A017

- Molecule 2 is (2E)-3-{5-[(2,4-diamino-6-propylpyrimidin-5-yl)methyl]-2,3-dimethoxyphenyl}-1-[(1S)-1-(2-methylprop-1-en-1-yl)phthalazin-2(1H)-yl]prop-2-en-1-one (three-letter code: 0U5) (formula: C₃₁H₃₆N₆O₃).



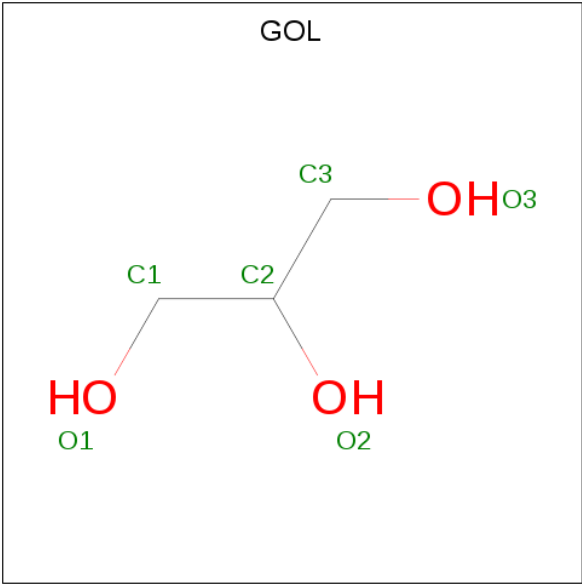
Mol	Chain	Residues	Atoms				ZeroOcc	AltConf
2	A	1	Total	C	N	O	0	0
			40	31	6	3		

- Molecule 3 is NADP NICOTINAMIDE-ADENINE-DINUCLEOTIDE PHOSPHATE (three-letter code: NAP) (formula: C₂₁H₂₈N₇O₁₇P₃).



Mol	Chain	Residues	Atoms					ZeroOcc	AltConf
3	A	1	Total	C	N	O	P	0	0
			48	21	7	17	3		

- Molecule 4 is GLYCEROL (three-letter code: GOL) (formula: C₃H₈O₃).



Mol	Chain	Residues	Atoms			ZeroOcc	AltConf
4	A	1	Total	C	O	0	0
			6	3	3		

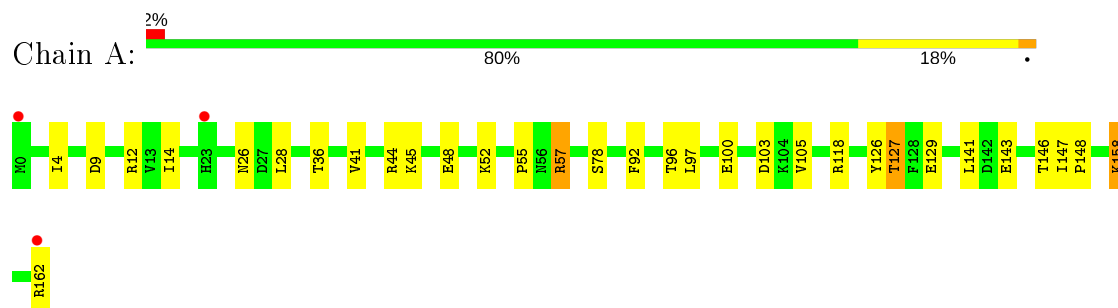
- Molecule 5 is water.

Mol	Chain	Residues	Atoms		ZeroOcc	AltConf
5	A	143	Total	O	0	0
			143	143		

3 Residue-property plots

These plots are drawn for all protein, RNA and DNA chains in the entry. The first graphic for a chain summarises the proportions of the various outlier classes displayed in the second graphic. The second graphic shows the sequence view annotated by issues in geometry and electron density. Residues are color-coded according to the number of geometric quality criteria for which they contain at least one outlier: green = 0, yellow = 1, orange = 2 and red = 3 or more. A red dot above a residue indicates a poor fit to the electron density ($RSRZ > 2$). Stretches of 2 or more consecutive residues without any outlier are shown as a green connector. Residues present in the sample, but not in the model, are shown in grey.

- Molecule 1: Dihydrofolate reductase



4 Data and refinement statistics

Property	Value	Source
Space group	P 61 2 2	Depositor
Cell constants a, b, c, α , β , γ	79.01 Å 79.01 Å 107.53 Å 90.00° 90.00° 120.00°	Depositor
Resolution (Å)	68.43 – 2.30 68.43 – 2.30	Depositor EDS
% Data completeness (in resolution range)	99.8 (68.43-2.30) 100.0 (68.43-2.30)	Depositor EDS
R_{merge}	(Not available)	Depositor
R_{sym}	0.14	Depositor
$\langle I/\sigma(I) \rangle$ ¹	4.36 (at 2.29 Å)	Xtriage
Refinement program	PHENIX (phenix.refine: 1.7.2_869)	Depositor
R, R_{free}	0.197 , 0.245 0.193 , 0.239	Depositor DCC
R_{free} test set	928 reflections (9.95%)	wwPDB-VP
Wilson B-factor (Å ²)	18.9	Xtriage
Anisotropy	0.141	Xtriage
Bulk solvent k_{sol} (e/Å ³), B_{sol} (Å ²)	0.35 , 47.9	EDS
L-test for twinning ²	$\langle L \rangle = 0.50$, $\langle L^2 \rangle = 0.34$	Xtriage
Estimated twinning fraction	No twinning to report.	Xtriage
F_o, F_c correlation	0.93	EDS
Total number of atoms	1559	wwPDB-VP
Average B, all atoms (Å ²)	17.0	wwPDB-VP

Xtriage's analysis on translational NCS is as follows: *The largest off-origin peak in the Patterson function is 5.48% of the height of the origin peak. No significant pseudotranslation is detected.*

¹Intensities estimated from amplitudes.

²Theoretical values of $\langle |L| \rangle$, $\langle L^2 \rangle$ for acentric reflections are 0.5, 0.333 respectively for untwinned datasets, and 0.375, 0.2 for perfectly twinned datasets.

5 Model quality

5.1 Standard geometry

Bond lengths and bond angles in the following residue types are not validated in this section: GOL, NAP, 0U5

The Z score for a bond length (or angle) is the number of standard deviations the observed value is removed from the expected value. A bond length (or angle) with $|Z| > 5$ is considered an outlier worth inspection. RMSZ is the root-mean-square of all Z scores of the bond lengths (or angles).

Mol	Chain	Bond lengths		Bond angles	
		RMSZ	$\# Z > 5$	RMSZ	$\# Z > 5$
1	A	0.39	0/1356	0.55	0/1838

There are no bond length outliers.

There are no bond angle outliers.

There are no chirality outliers.

There are no planarity outliers.

5.2 Too-close contacts

In the following table, the Non-H and H(model) columns list the number of non-hydrogen atoms and hydrogen atoms in the chain respectively. The H(added) column lists the number of hydrogen atoms added and optimized by MolProbity. The Clashes column lists the number of clashes within the asymmetric unit, whereas Symm-Clashes lists symmetry related clashes.

Mol	Chain	Non-H	H(model)	H(added)	Clashes	Symm-Clashes
1	A	1322	0	1325	46	1
2	A	40	0	36	16	0
3	A	48	0	21	2	0
4	A	6	0	8	6	0
5	A	143	0	0	6	0
All	All	1559	0	1390	49	1

The all-atom clashscore is defined as the number of clashes found per 1000 atoms (including hydrogen atoms). The all-atom clashscore for this structure is 17.

All (49) close contacts within the same asymmetric unit are listed below, sorted by their clash magnitude.

Atom-1	Atom-2	Interatomic distance (Å)	Clash overlap (Å)
1:A:28:LEU:HD21	2:A:200:0U5:H23A	1.07	1.04
1:A:28:LEU:CD2	2:A:200:0U5:H23A	1.86	1.04
1:A:28:LEU:HD21	2:A:200:0U5:C23	1.89	1.00
1:A:57:ARG:HE	2:A:200:0U5:H26	1.26	1.00
1:A:57:ARG:NE	2:A:200:0U5:H26	1.81	0.94
1:A:36:THR:HA	1:A:57:ARG:NH1	1.92	0.84
1:A:12:ARG:NE	4:A:202:GOL:H11	2.01	0.76
2:A:200:0U5:C31	2:A:200:0U5:H38A	2.16	0.75
1:A:12:ARG:HD3	4:A:202:GOL:H11	1.69	0.75
1:A:57:ARG:HG3	1:A:57:ARG:HH11	1.54	0.73
1:A:55:PRO:HG2	2:A:200:0U5:C28	2.18	0.73
1:A:12:ARG:CD	4:A:202:GOL:H11	2.19	0.72
1:A:146:THR:HB	5:A:407:HOH:O	1.88	0.72
1:A:28:LEU:HD11	2:A:200:0U5:C16	2.20	0.72
1:A:126:TYR:H	4:A:202:GOL:H12	1.55	0.72
2:A:200:0U5:C05	2:A:200:0U5:H38A	2.20	0.71
1:A:96:THR:O	1:A:100:GLU:HG3	1.92	0.70
1:A:55:PRO:HG2	2:A:200:0U5:H28	1.72	0.70
1:A:92:PHE:CZ	2:A:200:0U5:H04A	2.28	0.68
1:A:36:THR:HA	1:A:57:ARG:CZ	2.27	0.64
1:A:129:GLU:OE1	5:A:374:HOH:O	2.15	0.64
1:A:57:ARG:HG3	1:A:57:ARG:NH1	2.11	0.64
1:A:36:THR:CB	1:A:57:ARG:HH22	2.13	0.61
1:A:143:GLU:OE1	1:A:143:GLU:HA	2.02	0.58
1:A:12:ARG:HE	4:A:202:GOL:H11	1.69	0.57
1:A:14:ILE:O	3:A:201:NAP:H2N	2.06	0.56
1:A:28:LEU:HD21	2:A:200:0U5:C22	2.35	0.55
1:A:26:ASN:HB3	5:A:425:HOH:O	2.07	0.54
1:A:55:PRO:O	1:A:57:ARG:HD2	2.07	0.53
1:A:127:THR:HG22	1:A:129:GLU:H	1.74	0.52
1:A:36:THR:HB	1:A:57:ARG:HH22	1.73	0.52
1:A:12:ARG:HD3	4:A:202:GOL:C1	2.37	0.52
1:A:4:ILE:HG13	1:A:105:VAL:HG11	1.93	0.51
1:A:28:LEU:HG	2:A:200:0U5:H21	1.92	0.50
1:A:45:LYS:HG3	3:A:201:NAP:H51A	1.94	0.48
1:A:41:VAL:HG12	1:A:97:LEU:HD21	1.95	0.47
1:A:141:LEU:HD21	1:A:148:PRO:HA	1.97	0.47
1:A:52:LYS:NZ	5:A:441:HOH:O	2.36	0.46
1:A:36:THR:CB	1:A:57:ARG:NH2	2.77	0.46
1:A:36:THR:HB	1:A:57:ARG:NH2	2.30	0.46
2:A:200:0U5:H12A	2:A:200:0U5:H14	1.98	0.45
1:A:92:PHE:CE2	2:A:200:0U5:H04A	2.51	0.44

Continued on next page...

Continued from previous page...

Atom-1	Atom-2	Interatomic distance (Å)	Clash overlap (Å)
1:A:158:LYS:HD2	1:A:158:LYS:N	2.32	0.44
1:A:36:THR:HA	1:A:57:ARG:HH12	1.78	0.43
1:A:9:ASP:OD1	1:A:9:ASP:C	2.57	0.42
1:A:103:ASP:OD2	5:A:331:HOH:O	2.22	0.41
1:A:147:ILE:HG13	5:A:414:HOH:O	2.20	0.41
1:A:28:LEU:HG	2:A:200:OU5:C21	2.51	0.41
1:A:44:ARG:O	1:A:48:GLU:HG2	2.20	0.40

All (1) symmetry-related close contacts are listed below. The label for Atom-2 includes the symmetry operator and encoded unit-cell translations to be applied.

Atom-1	Atom-2	Interatomic distance (Å)	Clash overlap (Å)
1:A:118:ARG:NH2	1:A:118:ARG:NH2[11_554]	2.15	0.05

5.3 Torsion angles [i](#)

5.3.1 Protein backbone [i](#)

In the following table, the Percentiles column shows the percent Ramachandran outliers of the chain as a percentile score with respect to all X-ray entries followed by that with respect to entries of similar resolution.

The Analysed column shows the number of residues for which the backbone conformation was analysed, and the total number of residues.

Mol	Chain	Analysed	Favoured	Allowed	Outliers	Percentiles	
1	A	161/163 (99%)	157 (98%)	4 (2%)	0	100	100

There are no Ramachandran outliers to report.

5.3.2 Protein sidechains [i](#)

In the following table, the Percentiles column shows the percent sidechain outliers of the chain as a percentile score with respect to all X-ray entries followed by that with respect to entries of similar resolution.

The Analysed column shows the number of residues for which the sidechain conformation was analysed, and the total number of residues.

Mol	Chain	Analysed	Rotameric	Outliers	Percentiles
1	A	150/150 (100%)	145 (97%)	5 (3%)	38 53

All (5) residues with a non-rotameric sidechain are listed below:

Mol	Chain	Res	Type
1	A	57	ARG
1	A	78	SER
1	A	127	THR
1	A	158	LYS
1	A	162	ARG

Some sidechains can be flipped to improve hydrogen bonding and reduce clashes. There are no such sidechains identified.

5.3.3 RNA [i](#)

There are no RNA molecules in this entry.

5.4 Non-standard residues in protein, DNA, RNA chains [i](#)

There are no non-standard protein/DNA/RNA residues in this entry.

5.5 Carbohydrates [i](#)

There are no carbohydrates in this entry.

5.6 Ligand geometry [i](#)

3 ligands are modelled in this entry.

In the following table, the Counts columns list the number of bonds (or angles) for which Mogul statistics could be retrieved, the number of bonds (or angles) that are observed in the model and the number of bonds (or angles) that are defined in the Chemical Component Dictionary. The Link column lists molecule types, if any, to which the group is linked. The Z score for a bond length (or angle) is the number of standard deviations the observed value is removed from the expected value. A bond length (or angle) with $|Z| > 2$ is considered an outlier worth inspection. RMSZ is the root-mean-square of all Z scores of the bond lengths (or angles).

Mol	Type	Chain	Res	Link	Bond lengths			Bond angles		
					Counts	RMSZ	$\# Z > 2$	Counts	RMSZ	$\# Z > 2$
4	GOL	A	202	-	5,5,5	0.71	0	5,5,5	0.57	0

Mol	Type	Chain	Res	Link	Bond lengths			Bond angles		
					Counts	RMSZ	# Z > 2	Counts	RMSZ	# Z > 2
3	NAP	A	201	-	45,52,52	3.46	17 (37%)	56,80,80	1.98	15 (26%)
2	0U5	A	200	-	41,43,43	3.57	12 (29%)	48,60,60	2.57	12 (25%)

In the following table, the Chirals column lists the number of chiral outliers, the number of chiral centers analysed, the number of these observed in the model and the number defined in the Chemical Component Dictionary. Similar counts are reported in the Torsion and Rings columns. '-' means no outliers of that kind were identified.

Mol	Type	Chain	Res	Link	Chirals	Torsions	Rings
4	GOL	A	202	-	-	0/4/4/4	-
3	NAP	A	201	-	-	6/31/67/67	0/5/5/5
2	0U5	A	200	-	-	8/22/37/37	0/3/4/4

All (29) bond length outliers are listed below:

Mol	Chain	Res	Type	Atoms	Z	Observed(Å)	Ideal(Å)
2	A	200	0U5	C21-C22	14.09	1.54	1.33
2	A	200	0U5	C19-N18	12.13	1.43	1.29
3	A	201	NAP	C2N-C3N	9.14	1.53	1.39
3	A	201	NAP	C4N-C3N	9.13	1.54	1.39
3	A	201	NAP	C2N-N1N	8.40	1.45	1.35
3	A	201	NAP	C5N-C4N	7.69	1.55	1.38
3	A	201	NAP	C6N-C5N	6.63	1.53	1.38
2	A	200	0U5	C34-N35	5.58	1.45	1.33
3	A	201	NAP	O4B-C1B	5.50	1.48	1.41
3	A	201	NAP	C7N-N7N	5.29	1.43	1.33
2	A	200	0U5	C02-N01	4.66	1.45	1.34
3	A	201	NAP	C2A-N3A	4.58	1.39	1.32
3	A	201	NAP	C8A-N7A	4.55	1.42	1.34
2	A	200	0U5	C13-C14	4.51	1.54	1.47
2	A	200	0U5	C16-N17	4.35	1.44	1.36
2	A	200	0U5	C15-C16	4.09	1.54	1.48
3	A	201	NAP	C6N-N1N	3.62	1.44	1.35
3	A	201	NAP	O4D-C1D	3.60	1.46	1.41
2	A	200	0U5	C29-C24	2.96	1.43	1.39
2	A	200	0U5	C15-C14	2.78	1.40	1.33
3	A	201	NAP	C6A-N6A	2.72	1.44	1.34
3	A	201	NAP	C3B-C2B	-2.67	1.47	1.52
2	A	200	0U5	C03-C32	2.67	1.44	1.40
2	A	200	0U5	C24-C20	-2.34	1.50	1.52
3	A	201	NAP	O2D-C2D	-2.30	1.37	1.43

Continued on next page...

Continued from previous page...

Mol	Chain	Res	Type	Atoms	Z	Observed(Å)	Ideal(Å)
3	A	201	NAP	O3B-C3B	-2.29	1.37	1.43
3	A	201	NAP	C2A-N1A	2.25	1.38	1.33
2	A	200	0U5	C25-C19	2.15	1.50	1.44
3	A	201	NAP	O4B-C4B	2.13	1.49	1.45

All (27) bond angle outliers are listed below:

Mol	Chain	Res	Type	Atoms	Z	Observed(°)	Ideal(°)
2	A	200	0U5	C25-C19-N18	-9.39	113.41	125.88
2	A	200	0U5	C34-N33-C32	7.67	122.64	116.24
3	A	201	NAP	C5N-C4N-C3N	-6.28	112.91	120.34
3	A	201	NAP	N3A-C2A-N1A	-5.70	119.78	128.68
2	A	200	0U5	C03-C32-N33	-5.59	118.77	123.49
3	A	201	NAP	C2N-N1N-C1D	4.36	128.84	119.14
2	A	200	0U5	C04-C03-C02	-4.09	116.37	122.14
2	A	200	0U5	C34-N36-C02	3.91	121.30	116.99
2	A	200	0U5	O08-C07-C10	3.67	121.61	115.16
3	A	201	NAP	O3B-C3B-C4B	3.65	121.61	111.05
2	A	200	0U5	N36-C34-N33	-3.25	120.32	125.42
3	A	201	NAP	O3B-C3B-C2B	3.24	120.36	111.17
3	A	201	NAP	C3B-C2B-C1B	-3.20	96.87	102.89
2	A	200	0U5	O08-C07-C06	-2.98	118.99	124.12
2	A	200	0U5	C37-C22-C21	-2.93	114.21	122.67
3	A	201	NAP	C2N-C3N-C4N	2.90	121.55	118.26
3	A	201	NAP	O2B-C2B-C1B	2.79	120.14	110.10
3	A	201	NAP	O2D-C2D-C3D	2.67	120.45	111.82
3	A	201	NAP	O3D-C3D-C4D	2.59	118.55	111.05
3	A	201	NAP	O4B-C4B-C5B	2.54	117.72	109.37
2	A	200	0U5	C15-C16-N17	2.48	120.20	115.91
2	A	200	0U5	C24-C20-C21	-2.44	107.36	112.48
3	A	201	NAP	O4B-C1B-C2B	-2.39	102.44	106.59
3	A	201	NAP	C5D-C4D-C3D	2.28	123.74	115.18
3	A	201	NAP	O4D-C4D-C5D	2.20	116.60	109.37
2	A	200	0U5	C13-C31-C05	-2.20	119.64	122.22
3	A	201	NAP	C5B-C4B-C3B	2.08	122.97	115.18

There are no chirality outliers.

All (14) torsion outliers are listed below:

Mol	Chain	Res	Type	Atoms
3	A	201	NAP	C5B-O5B-PA-O3
3	A	201	NAP	O4D-C1D-N1N-C2N

Continued on next page...

Continued from previous page...

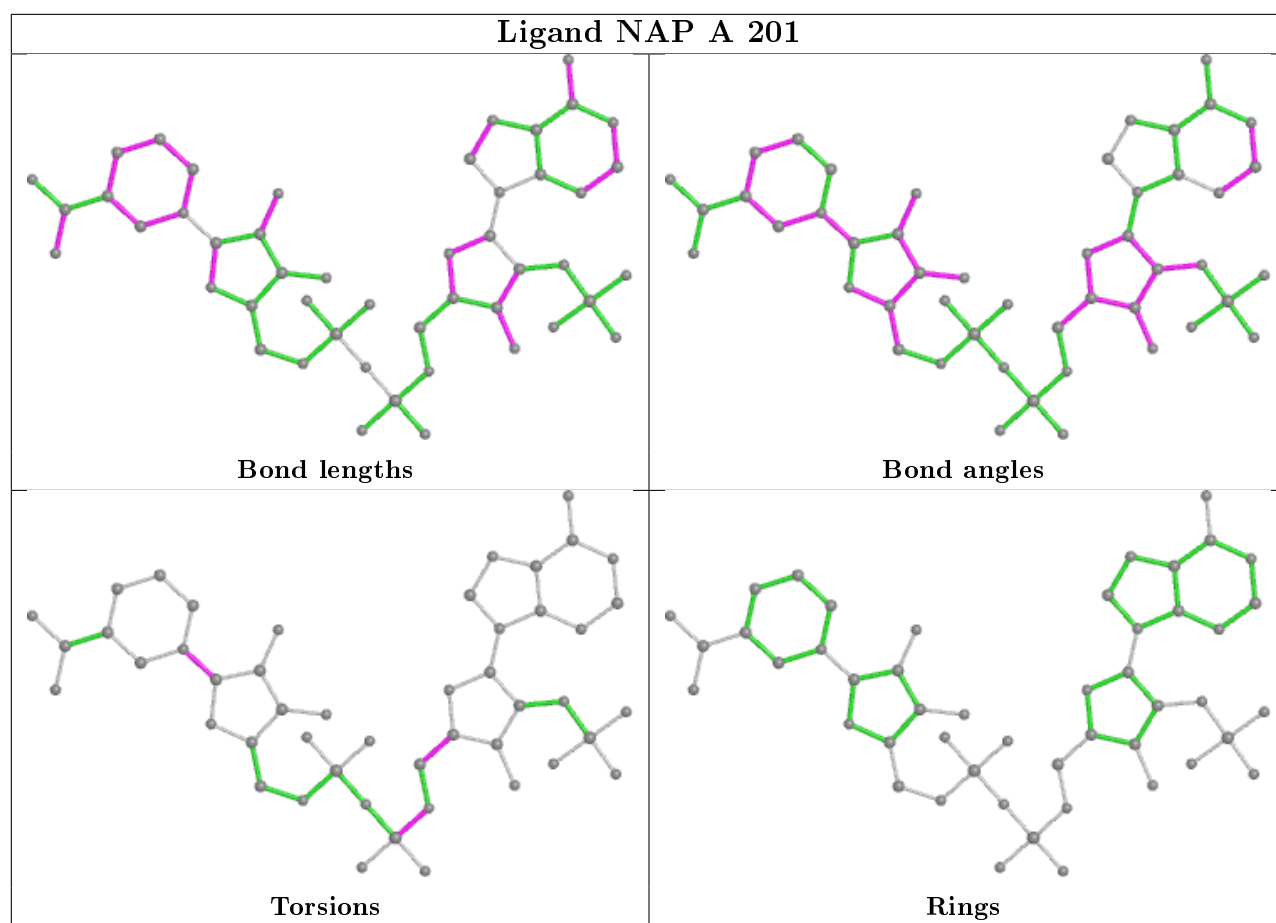
Mol	Chain	Res	Type	Atoms
3	A	201	NAP	O4D-C1D-N1N-C6N
2	A	200	0U5	C02-C03-C04-C05
2	A	200	0U5	C32-C03-C04-C05
2	A	200	0U5	C20-C21-C22-C23
2	A	200	0U5	C20-C21-C22-C37
3	A	201	NAP	O4B-C4B-C5B-O5B
3	A	201	NAP	C5B-O5B-PA-O1A
3	A	201	NAP	C5B-O5B-PA-O2A
2	A	200	0U5	C14-C15-C16-N17
2	A	200	0U5	C10-C13-C14-C15
2	A	200	0U5	C14-C15-C16-O30
2	A	200	0U5	C24-C20-C21-C22

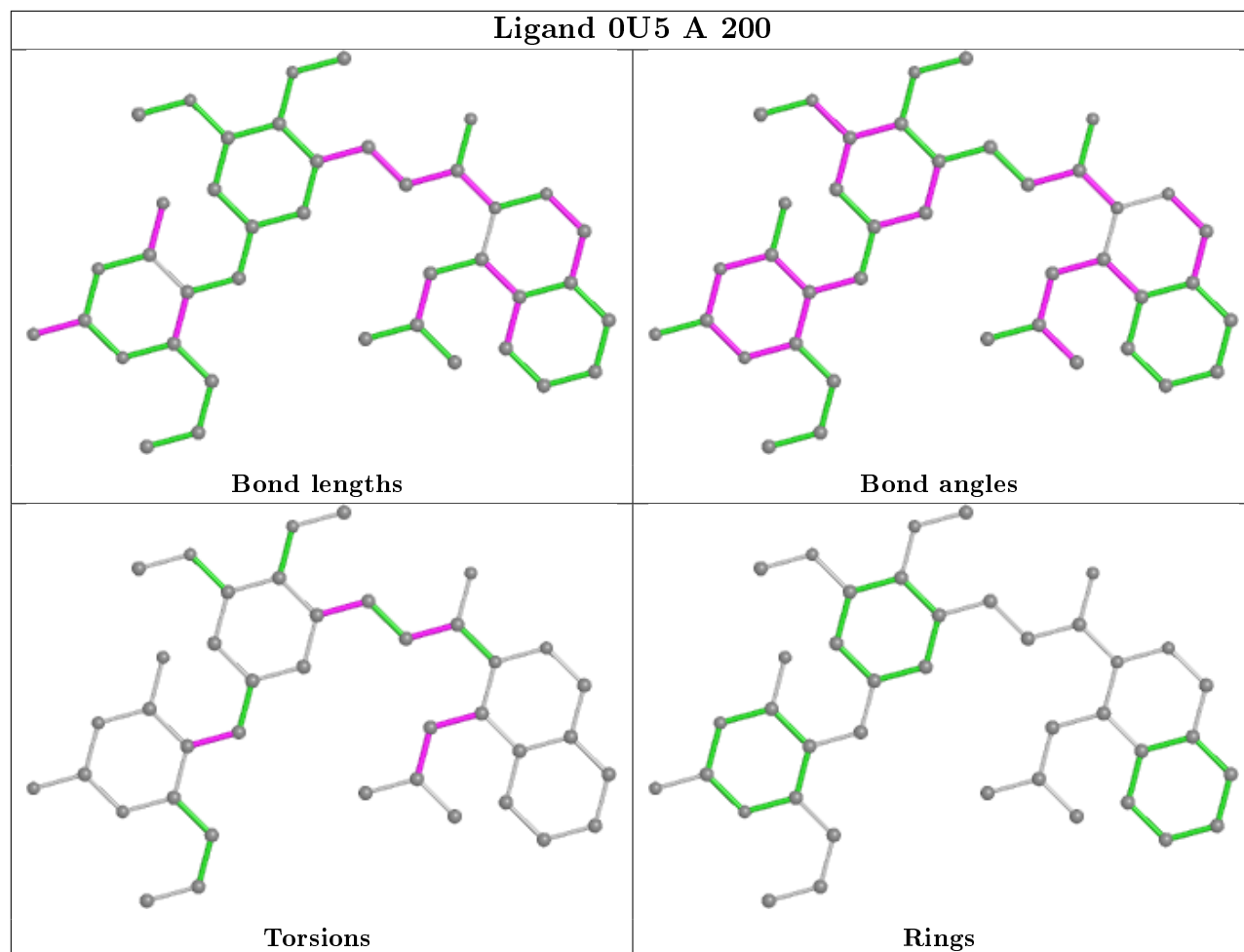
There are no ring outliers.

3 monomers are involved in 24 short contacts:

Mol	Chain	Res	Type	Clashes	Symm-Clashes
4	A	202	GOL	6	0
3	A	201	NAP	2	0
2	A	200	0U5	16	0

The following is a two-dimensional graphical depiction of Mogul quality analysis of bond lengths, bond angles, torsion angles, and ring geometry for all instances of the Ligand of Interest. In addition, ligands with molecular weight > 250 and outliers as shown on the validation Tables will also be included. For torsion angles, if less than 5% of the Mogul distribution of torsion angles is within 10 degrees of the torsion angle in question, then that torsion angle is considered an outlier. Any bond that is central to one or more torsion angles identified as an outlier by Mogul will be highlighted in the graph. For rings, the root-mean-square deviation (RMSD) between the ring in question and similar rings identified by Mogul is calculated over all ring torsion angles. If the average RMSD is greater than 60 degrees and the minimal RMSD between the ring in question and any Mogul-identified rings is also greater than 60 degrees, then that ring is considered an outlier. The outliers are highlighted in purple. The color gray indicates Mogul did not find sufficient equivalents in the CSD to analyse the geometry.





5.7 Other polymers [i](#)

There are no such residues in this entry.

5.8 Polymer linkage issues [i](#)

There are no chain breaks in this entry.

6 Fit of model and data [i](#)

6.1 Protein, DNA and RNA chains [i](#)

In the following table, the column labelled ‘#RSRZ> 2’ contains the number (and percentage) of RSRZ outliers, followed by percent RSRZ outliers for the chain as percentile scores relative to all X-ray entries and entries of similar resolution. The OWAB column contains the minimum, median, 95th percentile and maximum values of the occupancy-weighted average B-factor per residue. The column labelled ‘Q< 0.9’ lists the number of (and percentage) of residues with an average occupancy less than 0.9.

Mol	Chain	Analysed	<RSRZ>	#RSRZ>2	OWAB(Å ²)	Q<0.9
1	A	163/163 (100%)	-0.23	3 (1%) 68 74	5, 15, 33, 47	0

All (3) RSRZ outliers are listed below:

Mol	Chain	Res	Type	RSRZ
1	A	0	MET	4.3
1	A	162	ARG	2.9
1	A	23	HIS	2.0

6.2 Non-standard residues in protein, DNA, RNA chains [i](#)

There are no non-standard protein/DNA/RNA residues in this entry.

6.3 Carbohydrates [i](#)

There are no carbohydrates in this entry.

6.4 Ligands [i](#)

In the following table, the Atoms column lists the number of modelled atoms in the group and the number defined in the chemical component dictionary. The B-factors column lists the minimum, median, 95th percentile and maximum values of B factors of atoms in the group. The column labelled ‘Q< 0.9’ lists the number of atoms with occupancy less than 0.9.

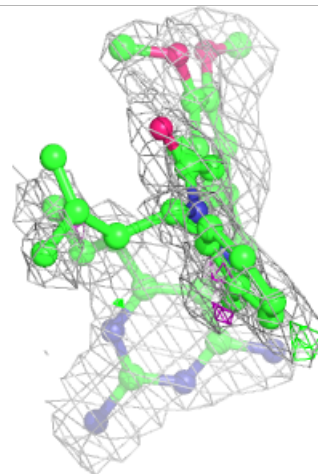
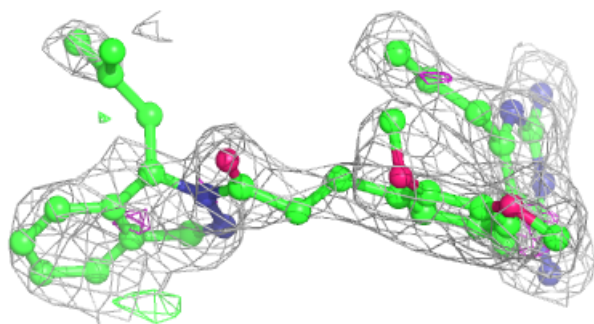
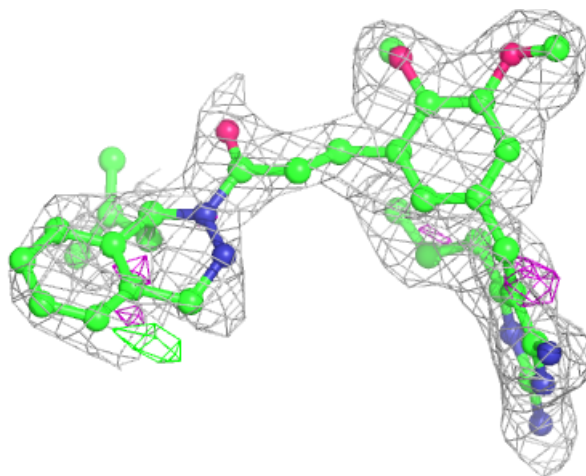
Mol	Type	Chain	Res	Atoms	RSCC	RSR	B-factors(Å ²)	Q<0.9
4	GOL	A	202	6/6	0.83	0.23	14,27,28,29	0
2	OU5	A	200	40/40	0.86	0.24	10,23,45,47	0
3	NAP	A	201	48/48	0.96	0.12	7,14,20,21	0

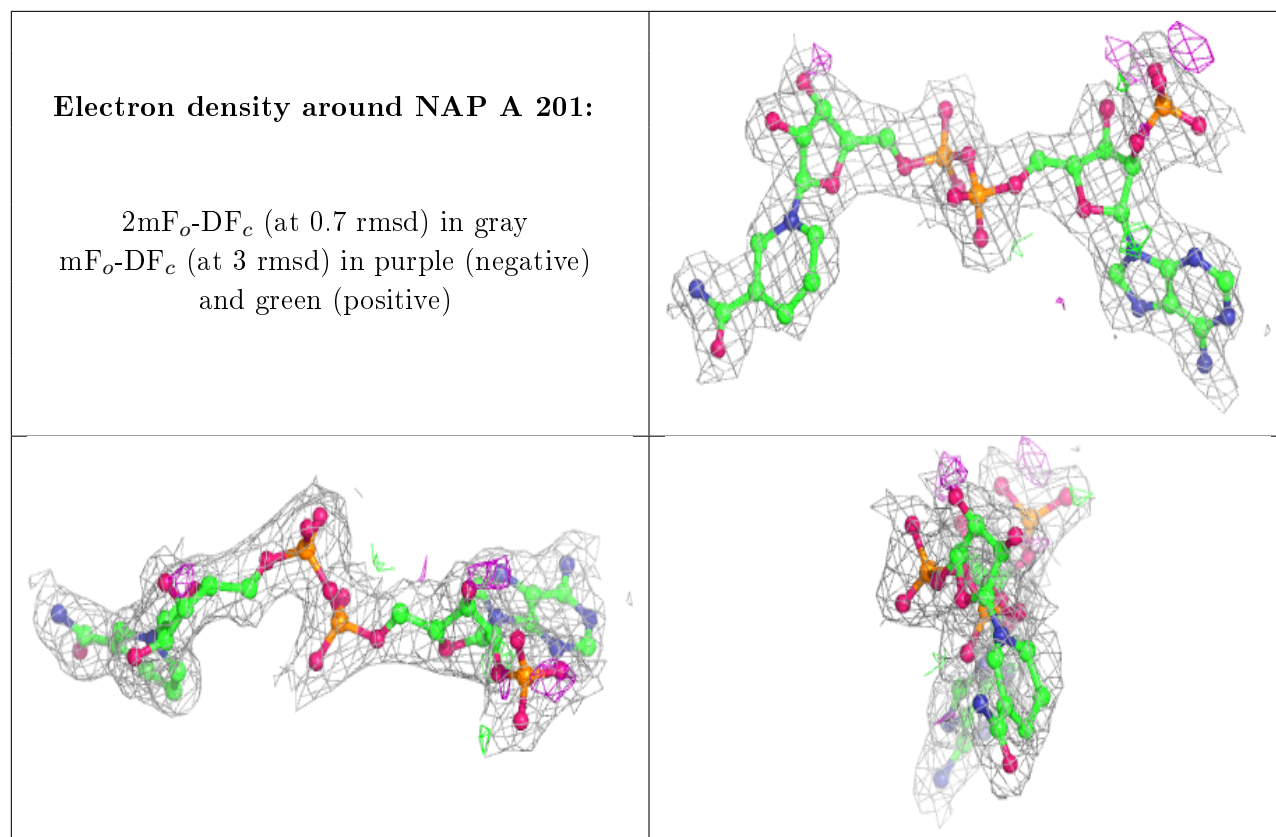
The following is a graphical depiction of the model fit to experimental electron density of all

instances of the Ligand of Interest. In addition, ligands with molecular weight > 250 and outliers as shown on the geometry validation Tables will also be included. Each fit is shown from different orientation to approximate a three-dimensional view.

Electron density around 0U5 A 200:

$2mF_o-DF_c$ (at 0.7 rmsd) in gray
 mF_o-DF_c (at 3 rmsd) in purple (negative)
and green (positive)





6.5 Other polymers [i](#)

There are no such residues in this entry.