



Full wwPDB X-ray Structure Validation Report ⓘ

Aug 21, 2020 – 02:46 AM BST

PDB ID : 4FIA
Title : Crystal Structure of Human CYP46A1 P450 with bicalutamide Bound
Authors : Stout, C.D.; Pikuleva, I.A.; Mast, N.
Deposited on : 2012-06-08
Resolution : 2.10 Å(reported)

This is a Full wwPDB X-ray Structure Validation Report for a publicly released PDB entry.

We welcome your comments at validation@mail.wwpdb.org

A user guide is available at

<https://www.wwpdb.org/validation/2017/XrayValidationReportHelp>

with specific help available everywhere you see the ⓘ symbol.

The following versions of software and data (see [references ⓘ](#)) were used in the production of this report:

MolProbity : 4.02b-467
Mogul : 1.8.5 (274361), CSD as541be (2020)
Xtriage (Phenix) : 1.13
EDS : 2.13.1
buster-report : 1.1.7 (2018)
Percentile statistics : 20191225.v01 (using entries in the PDB archive December 25th 2019)
Refmac : 5.8.0158
CCP4 : 7.0.044 (Gargrove)
Ideal geometry (proteins) : Engh & Huber (2001)
Ideal geometry (DNA, RNA) : Parkinson et al. (1996)
Validation Pipeline (wwPDB-VP) : 2.13.1

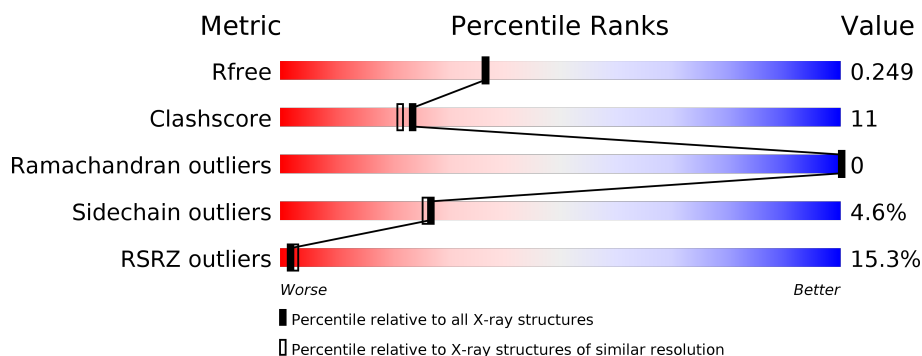
1 Overall quality at a glance

The following experimental techniques were used to determine the structure:

X-RAY DIFFRACTION

The reported resolution of this entry is 2.10 Å.

Percentile scores (ranging between 0-100) for global validation metrics of the entry are shown in the following graphic. The table shows the number of entries on which the scores are based.



Metric	Whole archive (#Entries)	Similar resolution (#Entries, resolution range(Å))
R_{free}	130704	5197 (2.10-2.10)
Clashscore	141614	5710 (2.10-2.10)
Ramachandran outliers	138981	5647 (2.10-2.10)
Sidechain outliers	138945	5648 (2.10-2.10)
RSRZ outliers	127900	5083 (2.10-2.10)

The table below summarises the geometric issues observed across the polymeric chains and their fit to the electron density. The red, orange, yellow and green segments on the lower bar indicate the fraction of residues that contain outliers for ≥ 3 , 2, 1 and 0 types of geometric quality criteria respectively. A grey segment represents the fraction of residues that are not modelled. The numeric value for each fraction is indicated below the corresponding segment, with a dot representing fractions $\leq 5\%$. The upper red bar (where present) indicates the fraction of residues that have poor fit to the electron density. The numeric value is given above the bar.

Mol	Chain	Length	Quality of chain
1	A	456	<div> <div>14%</div> <div>72%</div> <div>20%</div> <div>7%</div> </div>

2 Entry composition [i](#)

There are 6 unique types of molecules in this entry. The entry contains 3675 atoms, of which 0 are hydrogens and 0 are deuteriums.

In the tables below, the ZeroOcc column contains the number of atoms modelled with zero occupancy, the AltConf column contains the number of residues with at least one atom in alternate conformation and the Trace column contains the number of residues modelled with at most 2 atoms.

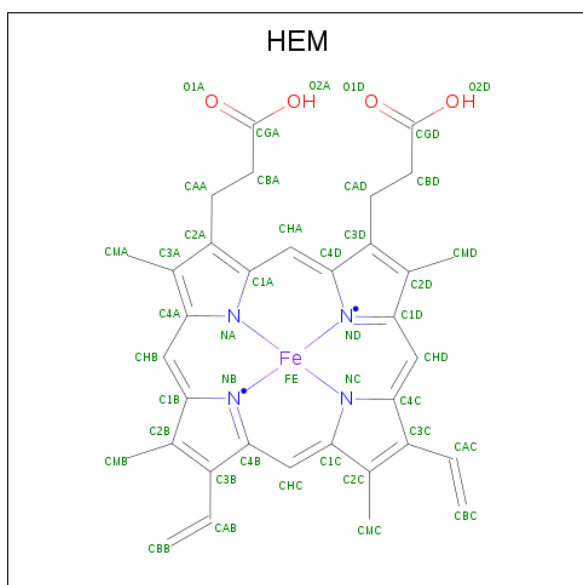
- Molecule 1 is a protein called Cholesterol 24-hydroxylase.

Mol	Chain	Residues	Atoms					ZeroOcc	AltConf	Trace
			Total	C	N	O	S			
1	A	426	3433	2189	603	624	17	0	0	0

There are 6 discrepancies between the modelled and reference sequences:

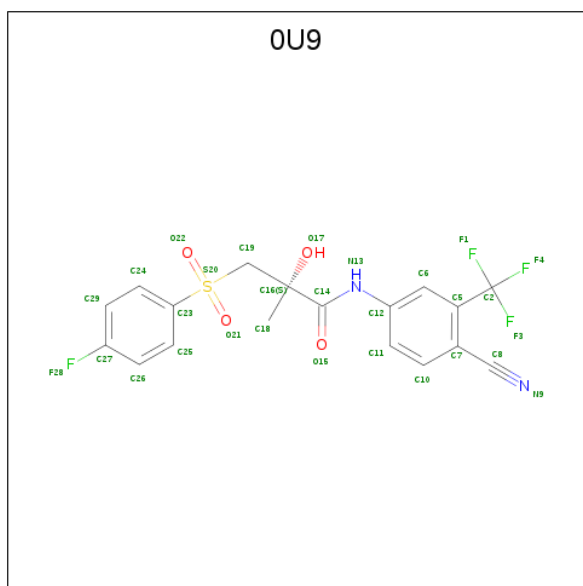
Chain	Residue	Modelled	Actual	Comment	Reference
A	49	MET	-	EXPRESSION TAG	UNP Q9Y6A2
A	50	ALA	-	EXPRESSION TAG	UNP Q9Y6A2
A	501	HIS	-	EXPRESSION TAG	UNP Q9Y6A2
A	502	HIS	-	EXPRESSION TAG	UNP Q9Y6A2
A	503	HIS	-	EXPRESSION TAG	UNP Q9Y6A2
A	504	HIS	-	EXPRESSION TAG	UNP Q9Y6A2

- Molecule 2 is PROTOPORPHYRIN IX CONTAINING FE (three-letter code: HEM) (formula: $C_{34}H_{32}FeN_4O_4$).



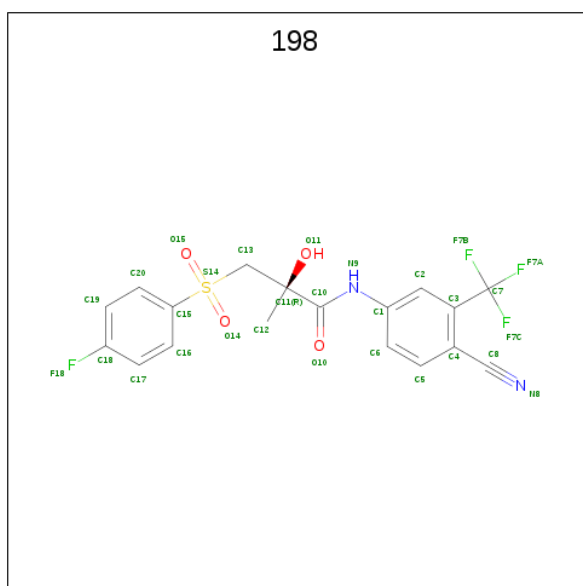
Mol	Chain	Residues	Atoms					ZeroOcc	AltConf
2	A	1	Total	C	Fe	N	O	0	0
			43	34	1	4	4		

- Molecule 3 is S-bicalutamide (three-letter code: 0U9) (formula: $C_{18}H_{14}F_4N_2O_4S$).



Mol	Chain	Residues	Atoms					ZeroOcc	AltConf
3	A	1	Total	C	F	N	O	S	
			29	18	4	2	4	1	1

- Molecule 4 is R-BICALUTAMIDE (three-letter code: 198) (formula: $C_{18}H_{14}F_4N_2O_4S$).



Mol	Chain	Residues	Atoms					ZeroOcc	AltConf
4	A	1	Total	C	F	N	O	S	
			29	18	4	2	4	1	
								0	1

- Molecule 5 is GLYCEROL (three-letter code: GOL) (formula: $C_3H_8O_3$).



Mol	Chain	Residues	Atoms			ZeroOcc	AltConf
5	A	1	Total	C	O		
			6	3	3	0	0

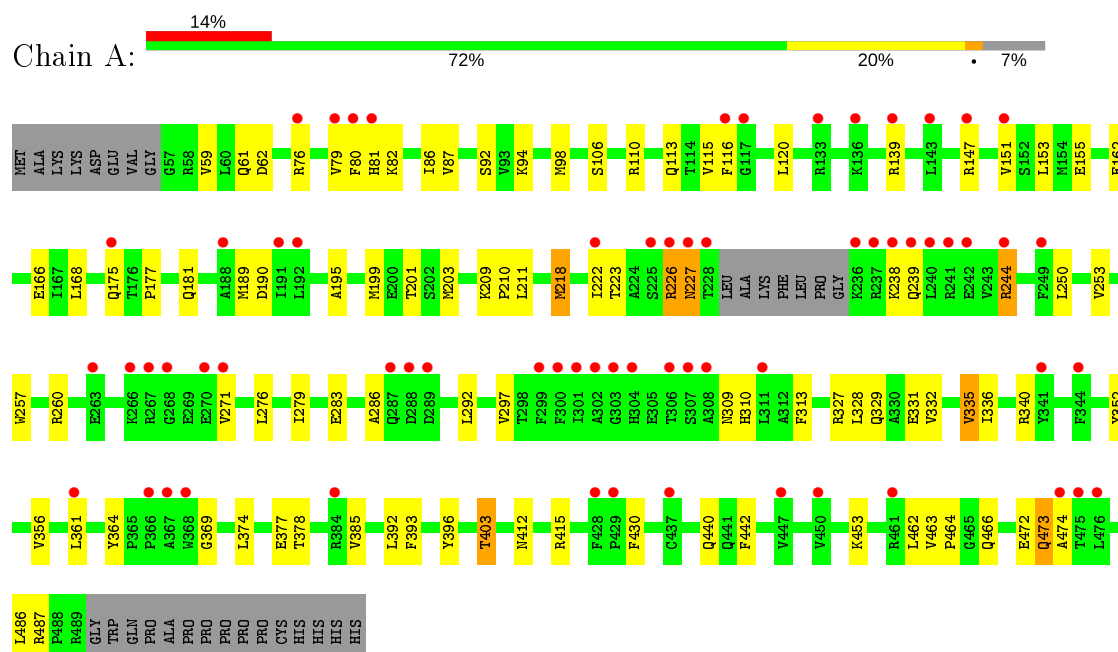
- Molecule 6 is water.

Mol	Chain	Residues	Atoms		ZeroOcc	AltConf
6	A	135	Total	O		
			135	135	0	0

3 Residue-property plots [i](#)

These plots are drawn for all protein, RNA, DNA and oligosaccharide chains in the entry. The first graphic for a chain summarises the proportions of the various outlier classes displayed in the second graphic. The second graphic shows the sequence view annotated by issues in geometry and electron density. Residues are color-coded according to the number of geometric quality criteria for which they contain at least one outlier: green = 0, yellow = 1, orange = 2 and red = 3 or more. A red dot above a residue indicates a poor fit to the electron density ($RSRZ > 2$). Stretches of 2 or more consecutive residues without any outlier are shown as a green connector. Residues present in the sample, but not in the model, are shown in grey.

- Molecule 1: Cholesterol 24-hydroxylase



4 Data and refinement statistics

Property	Value	Source
Space group	I 41 2 2	Depositor
Cell constants a, b, c, α , β , γ	121.05Å 121.05Å 142.34Å 90.00° 90.00° 90.00°	Depositor
Resolution (Å)	38.82 – 2.10 38.82 – 2.10	Depositor EDS
% Data completeness (in resolution range)	99.0 (38.82-2.10) 98.8 (38.82-2.10)	Depositor EDS
R_{merge}	(Not available)	Depositor
R_{sym}	0.05	Depositor
$\langle I/\sigma(I) \rangle$ ¹	8.06 (at 2.10Å)	Xtriage
Refinement program	REFMAC	Depositor
R, R_{free}	0.208 , 0.253 0.206 , 0.249	Depositor DCC
R_{free} test set	1557 reflections (5.05%)	wwPDB-VP
Wilson B-factor (Å ²)	44.2	Xtriage
Anisotropy	0.077	Xtriage
Bulk solvent k_{sol} (e/Å ³), B_{sol} (Å ²)	0.36 , 44.7	EDS
L-test for twinning ²	$\langle L \rangle = 0.46$, $\langle L^2 \rangle = 0.28$	Xtriage
Estimated twinning fraction	No twinning to report.	Xtriage
F_o, F_c correlation	0.95	EDS
Total number of atoms	3675	wwPDB-VP
Average B, all atoms (Å ²)	48.0	wwPDB-VP

Xtriage's analysis on translational NCS is as follows: *The largest off-origin peak in the Patterson function is 3.15% of the height of the origin peak. No significant pseudotranslation is detected.*

¹Intensities estimated from amplitudes.

²Theoretical values of $\langle |L| \rangle$, $\langle L^2 \rangle$ for acentric reflections are 0.5, 0.333 respectively for untwinned datasets, and 0.375, 0.2 for perfectly twinned datasets.

5 Model quality [i](#)

5.1 Standard geometry [i](#)

Bond lengths and bond angles in the following residue types are not validated in this section: GOL, 0U9, HEM, 198

The Z score for a bond length (or angle) is the number of standard deviations the observed value is removed from the expected value. A bond length (or angle) with $|Z| > 5$ is considered an outlier worth inspection. RMSZ is the root-mean-square of all Z scores of the bond lengths (or angles).

Mol	Chain	Bond lengths		Bond angles	
		RMSZ	$\# Z > 5$	RMSZ	$\# Z > 5$
1	A	0.62	0/3500	0.66	1/4719 (0.0%)

There are no bond length outliers.

All (1) bond angle outliers are listed below:

Mol	Chain	Res	Type	Atoms	Z	Observed($^{\circ}$)	Ideal($^{\circ}$)
1	A	250	LEU	CA-CB-CG	5.07	126.95	115.30

There are no chirality outliers.

There are no planarity outliers.

5.2 Too-close contacts [i](#)

In the following table, the Non-H and H(model) columns list the number of non-hydrogen atoms and hydrogen atoms in the chain respectively. The H(added) column lists the number of hydrogen atoms added and optimized by MolProbity. The Clashes column lists the number of clashes within the asymmetric unit, whereas Symm-Clashes lists symmetry related clashes.

Mol	Chain	Non-H	H(model)	H(added)	Clashes	Symm-Clashes
1	A	3433	0	3482	77	0
2	A	43	0	30	0	0
3	A	29	0	13	4	0
4	A	29	0	13	7	0
5	A	6	0	8	0	0
6	A	135	0	0	15	0
All	All	3675	0	3546	79	0

The all-atom clashscore is defined as the number of clashes found per 1000 atoms (including hydrogen atoms). The all-atom clashscore for this structure is 11.

All (79) close contacts within the same asymmetric unit are listed below, sorted by their clash magnitude.

Atom-1	Atom-2	Interatomic distance (Å)	Clash overlap (Å)
1:A:332:VAL:HB	6:A:755:HOH:O	1.44	1.15
1:A:244:ARG:HG3	1:A:244:ARG:HH11	1.33	0.93
1:A:327:ARG:HD3	6:A:722:HOH:O	1.80	0.81
1:A:80:PHE:CZ	3:A:601[A]:0U9:H9	2.16	0.81
1:A:210:PRO:HG2	6:A:701:HOH:O	1.83	0.79
1:A:80:PHE:CZ	4:A:602[B]:198:H132	2.19	0.77
1:A:120:LEU:HD21	1:A:218:MET:HE2	1.64	0.77
1:A:177:PRO:HG2	6:A:812:HOH:O	1.86	0.75
1:A:453:LYS:HD2	6:A:823:HOH:O	1.87	0.75
1:A:80:PHE:HZ	3:A:601[A]:0U9:H9	1.48	0.74
1:A:226:ARG:HE	1:A:227:ASN:HB2	1.53	0.74
1:A:80:PHE:CE1	1:A:226:ARG:HG3	2.26	0.71
1:A:244:ARG:HG3	1:A:244:ARG:NH1	2.05	0.70
1:A:80:PHE:HZ	4:A:602[B]:198:H132	1.53	0.69
1:A:403:THR:HG22	6:A:715:HOH:O	1.93	0.69
1:A:80:PHE:HB3	1:A:82:LYS:HE2	1.76	0.68
1:A:329:GLN:HA	6:A:755:HOH:O	1.92	0.67
1:A:80:PHE:CZ	1:A:226:ARG:HG3	2.31	0.65
1:A:209:LYS:N	1:A:210:PRO:HD2	2.11	0.65
1:A:175:GLN:HG3	6:A:814:HOH:O	1.98	0.64
1:A:189:MET:HG2	1:A:203:MET:SD	2.39	0.63
1:A:59:VAL:HG12	1:A:61:GLN:H	1.64	0.61
1:A:87:VAL:HG13	6:A:770:HOH:O	2.02	0.59
1:A:223:THR:OG1	1:A:473:GLN:HG3	2.04	0.57
1:A:147:ARG:HD3	6:A:757:HOH:O	2.07	0.54
1:A:94:LYS:O	1:A:98:MET:HB2	2.07	0.54
1:A:331:GLU:O	1:A:335:VAL:HG13	2.08	0.54
1:A:462:LEU:HG	1:A:466:GLN:HB2	1.90	0.53
1:A:147:ARG:O	1:A:151:VAL:HG23	2.08	0.53
1:A:226:ARG:HH22	1:A:472:GLU:HG2	1.74	0.52
1:A:116:PHE:O	1:A:244:ARG:NE	2.42	0.52
1:A:115:VAL:HG21	1:A:222:ILE:HG12	1.92	0.52
1:A:283:GLU:HG3	1:A:292:LEU:HB2	1.91	0.52
1:A:110:ARG:HG2	1:A:113:GLN:OE1	2.11	0.51
1:A:369:GLY:HA3	1:A:393:PHE:O	2.11	0.51
1:A:286:ALA:HB2	6:A:771:HOH:O	2.11	0.50
1:A:199:MET:HE3	6:A:775:HOH:O	2.12	0.49
1:A:474:ALA:HA	4:A:602[B]:198:H122	1.94	0.49
1:A:412:ASN:O	1:A:415:ARG:HG3	2.12	0.49
1:A:87:VAL:HG11	1:A:92:SER:HB3	1.94	0.49

Continued on next page...

Continued from previous page...

Atom-1	Atom-2	Interatomic distance (Å)	Clash overlap (Å)
1:A:474:ALA:HA	4:A:602[B]:198:C12	2.43	0.49
1:A:211:LEU:HD13	1:A:253:VAL:HG21	1.95	0.48
1:A:276:LEU:HA	1:A:279:ILE:HG12	1.94	0.48
1:A:327:ARG:CD	6:A:722:HOH:O	2.52	0.48
1:A:175:GLN:O	1:A:177:PRO:HD3	2.13	0.48
1:A:76:ARG:CZ	1:A:76:ARG:HB2	2.44	0.47
1:A:340:ARG:O	1:A:453:LYS:NZ	2.48	0.47
1:A:153:LEU:HD22	1:A:195:ALA:HB1	1.97	0.47
1:A:327:ARG:HB2	6:A:776:HOH:O	2.13	0.47
1:A:374:LEU:HD11	1:A:378:THR:OG1	2.16	0.46
1:A:168:LEU:HB3	1:A:486:LEU:CD2	2.46	0.46
1:A:120:LEU:HD12	1:A:297:VAL:HG11	1.97	0.45
1:A:199:MET:HG3	1:A:257:TRP:CD2	2.51	0.45
1:A:190:ASP:OD1	1:A:201:THR:OG1	2.30	0.45
1:A:332:VAL:HG13	1:A:336:ILE:HD11	1.99	0.45
1:A:79:VAL:O	1:A:80:PHE:HB2	2.17	0.45
1:A:271:VAL:O	1:A:271:VAL:HG23	2.17	0.45
1:A:80:PHE:CE1	3:A:601[A]:0U9:H9	2.51	0.44
1:A:244:ARG:CG	1:A:244:ARG:NH1	2.75	0.44
1:A:80:PHE:CE1	4:A:602[B]:198:H132	2.51	0.44
1:A:313:PHE:CD2	1:A:364:TYR:HB3	2.53	0.43
4:A:602[B]:198:C18	4:A:602[B]:198:H6	2.48	0.43
1:A:110:ARG:HA	1:A:113:GLN:OE1	2.19	0.43
1:A:430:PHE:CG	1:A:440:GLN:HG3	2.54	0.43
1:A:162:GLU:OE2	1:A:166:GLU:OE2	2.37	0.43
1:A:328:LEU:HD21	1:A:356:VAL:HG21	2.01	0.43
1:A:162:GLU:OE1	1:A:453:LYS:NZ	2.45	0.42
1:A:80:PHE:HZ	3:A:601[A]:0U9:C18	2.32	0.42
1:A:463:VAL:HA	1:A:464:PRO:HD2	1.88	0.42
1:A:377:GLU:HA	1:A:385:VAL:O	2.20	0.41
1:A:86:ILE:HD12	1:A:392:LEU:HD22	2.02	0.41
1:A:309:ASN:ND2	6:A:704:HOH:O	2.18	0.41
4:A:602[B]:198:C19	4:A:602[B]:198:H6	2.51	0.41
1:A:310:HIS:CE1	1:A:361:LEU:HG	2.56	0.41
1:A:430:PHE:CD2	1:A:440:GLN:HG3	2.56	0.41
1:A:209:LYS:N	1:A:210:PRO:CD	2.82	0.41
1:A:62:ASP:OD1	1:A:396:TYR:OH	2.32	0.41
1:A:473:GLN:HB3	1:A:474:ALA:H	1.43	0.40
1:A:352:TYR:O	1:A:356:VAL:HG23	2.21	0.40

There are no symmetry-related clashes.

5.3 Torsion angles

5.3.1 Protein backbone

In the following table, the Percentiles column shows the percent Ramachandran outliers of the chain as a percentile score with respect to all X-ray entries followed by that with respect to entries of similar resolution.

The Analysed column shows the number of residues for which the backbone conformation was analysed, and the total number of residues.

Mol	Chain	Analysed	Favoured	Allowed	Outliers	Percentiles	
1	A	422/456 (92%)	409 (97%)	13 (3%)	0	100	100

There are no Ramachandran outliers to report.

5.3.2 Protein sidechains

In the following table, the Percentiles column shows the percent sidechain outliers of the chain as a percentile score with respect to all X-ray entries followed by that with respect to entries of similar resolution.

The Analysed column shows the number of residues for which the sidechain conformation was analysed, and the total number of residues.

Mol	Chain	Analysed	Rotameric	Outliers	Percentiles	
1	A	373/397 (94%)	356 (95%)	17 (5%)	27	26

All (17) residues with a non-rotameric sidechain are listed below:

Mol	Chain	Res	Type
1	A	81	HIS
1	A	106	SER
1	A	139	ARG
1	A	155	GLU
1	A	181	GLN
1	A	218	MET
1	A	226	ARG
1	A	227	ASN
1	A	238	LYS
1	A	239	GLN
1	A	244	ARG
1	A	260	ARG
1	A	335	VAL

Continued on next page...

Continued from previous page...

Mol	Chain	Res	Type
1	A	403	THR
1	A	442	PHE
1	A	473	GLN
1	A	487	ARG

Some sidechains can be flipped to improve hydrogen bonding and reduce clashes. All (1) such sidechains are listed below:

Mol	Chain	Res	Type
1	A	175	GLN

5.3.3 RNA ⓘ

There are no RNA molecules in this entry.

5.4 Non-standard residues in protein, DNA, RNA chains ⓘ

There are no non-standard protein/DNA/RNA residues in this entry.

5.5 Carbohydrates ⓘ

There are no monosaccharides in this entry.

5.6 Ligand geometry ⓘ

4 ligands are modelled in this entry.

In the following table, the Counts columns list the number of bonds (or angles) for which Mogul statistics could be retrieved, the number of bonds (or angles) that are observed in the model and the number of bonds (or angles) that are defined in the Chemical Component Dictionary. The Link column lists molecule types, if any, to which the group is linked. The Z score for a bond length (or angle) is the number of standard deviations the observed value is removed from the expected value. A bond length (or angle) with $|Z| > 2$ is considered an outlier worth inspection. RMSZ is the root-mean-square of all Z scores of the bond lengths (or angles).

Mol	Type	Chain	Res	Link	Bond lengths			Bond angles		
					Counts	RMSZ	# Z > 2	Counts	RMSZ	# Z > 2
3	0U9	A	601[A]	-	29,30,30	5.12	7 (24%)	41,46,46	2.45	14 (34%)
2	HEM	A	600	1,6	27,50,50	2.66	13 (48%)	17,82,82	1.49	4 (23%)
4	198	A	602[B]	-	29,30,30	5.18	8 (27%)	41,46,46	2.46	11 (26%)

Mol	Type	Chain	Res	Link	Bond lengths			Bond angles		
					Counts	RMSZ	# Z > 2	Counts	RMSZ	# Z > 2
5	GOL	A	603	-	5,5,5	0.34	0	5,5,5	0.42	0

In the following table, the Chirals column lists the number of chiral outliers, the number of chiral centers analysed, the number of these observed in the model and the number defined in the Chemical Component Dictionary. Similar counts are reported in the Torsion and Rings columns. '-' means no outliers of that kind were identified.

Mol	Type	Chain	Res	Link	Chirals	Torsions	Rings
3	0U9	A	601[A]	-	-	7/30/30/30	0/2/2/2
2	HEM	A	600	1,6	-	0/6/54/54	-
4	198	A	602[B]	-	-	10/30/30/30	0/2/2/2
5	GOL	A	603	-	-	2/4/4/4	-

All (28) bond length outliers are listed below:

Mol	Chain	Res	Type	Atoms	Z	Observed(Å)	Ideal(Å)
4	A	602[B]	198	O14-S14	17.80	1.70	1.44
3	A	601[A]	0U9	O21-S20	17.76	1.70	1.44
4	A	602[B]	198	O15-S14	17.68	1.70	1.44
3	A	601[A]	0U9	O22-S20	17.59	1.70	1.44
4	A	602[B]	198	C13-S14	-7.94	1.69	1.78
3	A	601[A]	0U9	C19-S20	-7.42	1.70	1.78
2	A	600	HEM	C3B-CAB	-6.38	1.34	1.47
3	A	601[A]	0U9	O15-C14	6.26	1.33	1.22
4	A	602[B]	198	O10-C10	6.09	1.33	1.22
2	A	600	HEM	C3B-C2B	5.01	1.47	1.40
2	A	600	HEM	C3C-C2C	4.65	1.46	1.40
2	A	600	HEM	C1A-CHA	4.02	1.52	1.41
2	A	600	HEM	C1C-C2C	-3.89	1.33	1.42
4	A	602[B]	198	C1-N9	-3.65	1.34	1.41
4	A	602[B]	198	C15-S14	-3.51	1.70	1.76
2	A	600	HEM	C1A-NA	3.24	1.42	1.36
3	A	601[A]	0U9	C23-S20	-3.23	1.71	1.76
3	A	601[A]	0U9	C12-N13	-3.14	1.35	1.41
2	A	600	HEM	CBB-CAB	3.02	1.49	1.29
2	A	600	HEM	C1B-C2B	-2.98	1.35	1.42
4	A	602[B]	198	C10-N9	-2.97	1.28	1.35
2	A	600	HEM	C4B-CHC	-2.93	1.32	1.41
2	A	600	HEM	C4A-CHB	-2.92	1.32	1.41
2	A	600	HEM	C4D-C3D	2.92	1.49	1.42
3	A	601[A]	0U9	C14-N13	-2.44	1.29	1.35
2	A	600	HEM	C1D-CHD	-2.43	1.34	1.41

Continued on next page...

Continued from previous page...

Mol	Chain	Res	Type	Atoms	Z	Observed(Å)	Ideal(Å)
4	A	602[B]	198	C11-C10	-2.31	1.51	1.54
2	A	600	HEM	C3C-CAC	2.11	1.52	1.47

All (29) bond angle outliers are listed below:

Mol	Chain	Res	Type	Atoms	Z	Observed(°)	Ideal(°)
4	A	602[B]	198	O15-S14-O14	-10.48	106.19	118.44
3	A	601[A]	0U9	O22-S20-O21	-10.28	106.42	118.44
4	A	602[B]	198	O10-C10-C11	-4.86	116.84	120.16
3	A	601[A]	0U9	F1-C2-C5	-4.00	105.74	112.70
4	A	602[B]	198	C13-S14-C15	3.95	115.05	105.45
3	A	601[A]	0U9	C19-S20-C23	3.94	115.03	105.45
3	A	601[A]	0U9	O15-C14-C16	3.75	122.72	120.16
2	A	600	HEM	C4C-C3C-C2C	-3.71	104.31	106.90
4	A	602[B]	198	O10-C10-N9	-3.24	115.35	123.23
4	A	602[B]	198	C12-C11-C10	3.19	113.20	108.05
3	A	601[A]	0U9	C12-N13-C14	3.06	132.34	126.78
3	A	601[A]	0U9	C10-C11-C12	3.01	123.77	120.30
3	A	601[A]	0U9	C11-C12-C6	-2.97	116.13	119.65
4	A	602[B]	198	F7A-C7-C3	-2.96	107.55	112.70
4	A	602[B]	198	C16-C15-S14	2.90	122.66	119.49
3	A	601[A]	0U9	C24-C23-S20	2.88	122.64	119.49
4	A	602[B]	198	C1-N9-C10	2.85	131.97	126.78
2	A	600	HEM	CMA-C3A-C4A	-2.80	124.17	128.46
3	A	601[A]	0U9	O15-C14-N13	-2.65	116.80	123.23
3	A	601[A]	0U9	C5-C7-C8	2.59	125.10	122.26
4	A	602[B]	198	C19-C18-C17	-2.44	119.59	122.83
3	A	601[A]	0U9	O21-S20-C19	2.34	113.43	108.12
2	A	600	HEM	CBD-CAD-C3D	-2.27	108.29	112.48
3	A	601[A]	0U9	O22-S20-C19	-2.13	103.29	108.12
4	A	602[B]	198	C6-C1-C2	-2.12	117.14	119.65
4	A	602[B]	198	O14-S14-C13	2.04	112.76	108.12
3	A	601[A]	0U9	C29-C27-C26	-2.01	120.16	122.83
3	A	601[A]	0U9	C10-C7-C8	-2.00	115.90	119.40
2	A	600	HEM	C4A-C3A-C2A	2.00	108.39	107.00

There are no chirality outliers.

All (19) torsion outliers are listed below:

Mol	Chain	Res	Type	Atoms
3	A	601[A]	0U9	C14-C16-C19-S20
3	A	601[A]	0U9	O17-C16-C19-S20

Continued on next page...

Continued from previous page...

Mol	Chain	Res	Type	Atoms
3	A	601[A]	0U9	C18-C16-C19-S20
3	A	601[A]	0U9	C16-C19-S20-C23
4	A	602[B]	198	O11-C11-C13-S14
4	A	602[B]	198	C12-C11-C13-S14
4	A	602[B]	198	C10-C11-C13-S14
4	A	602[B]	198	O10-C10-C11-O11
4	A	602[B]	198	N9-C10-C11-O11
4	A	602[B]	198	O10-C10-C11-C12
4	A	602[B]	198	N9-C10-C11-C12
5	A	603	GOL	C1-C2-C3-O3
5	A	603	GOL	O2-C2-C3-O3
4	A	602[B]	198	C11-C13-S14-C15
3	A	601[A]	0U9	C16-C19-S20-O21
4	A	602[B]	198	C11-C13-S14-O14
3	A	601[A]	0U9	C24-C23-S20-O22
3	A	601[A]	0U9	C25-C23-S20-O22
4	A	602[B]	198	C16-C15-S14-O15

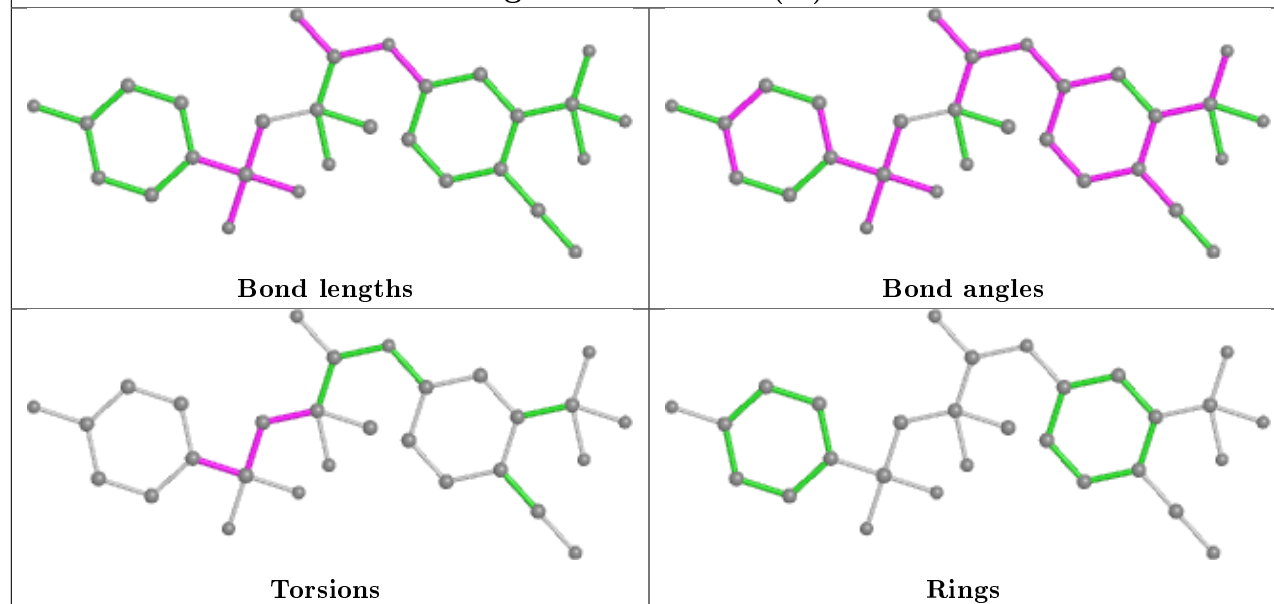
There are no ring outliers.

2 monomers are involved in 11 short contacts:

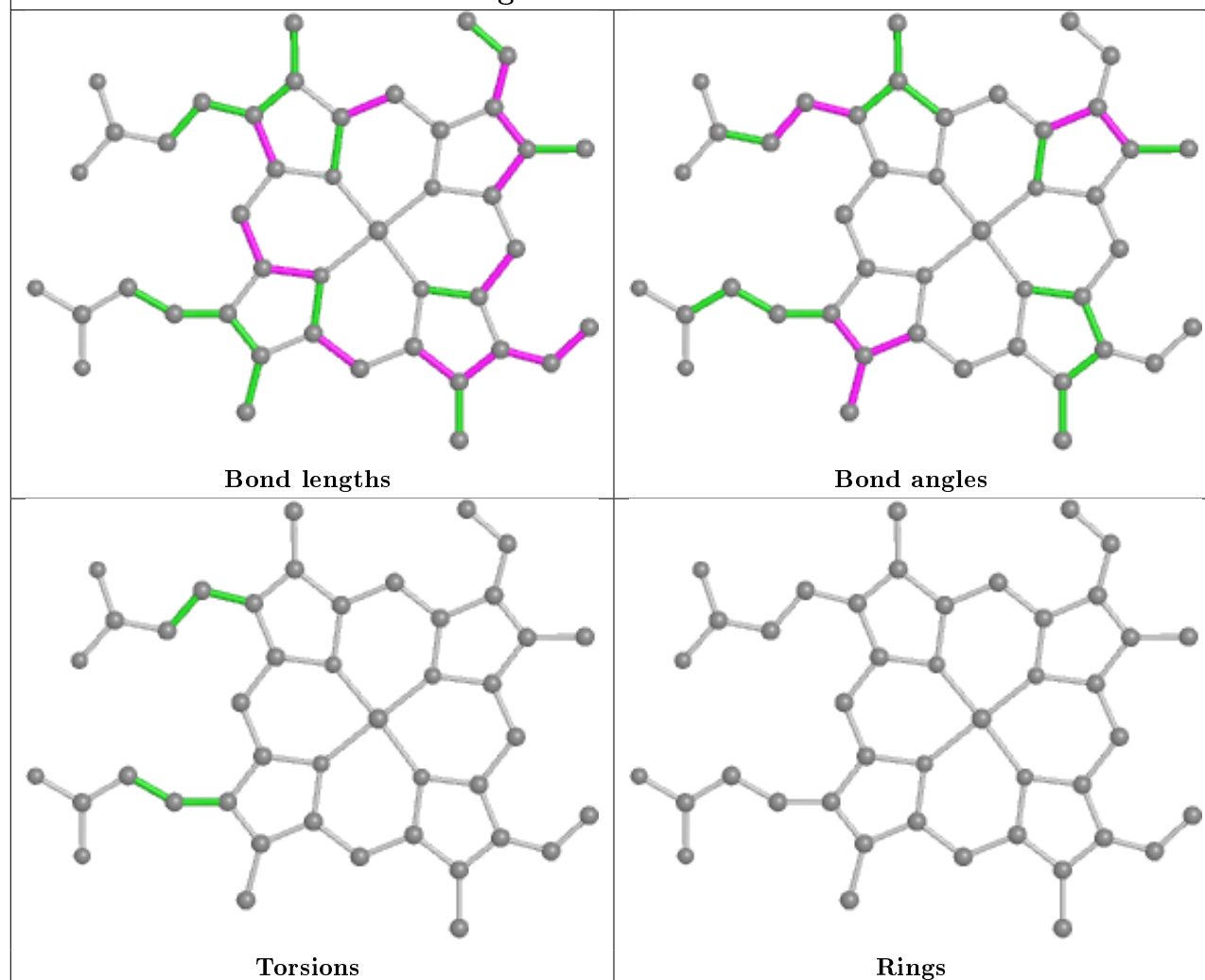
Mol	Chain	Res	Type	Clashes	Symm-Clashes
3	A	601[A]	0U9	4	0
4	A	602[B]	198	7	0

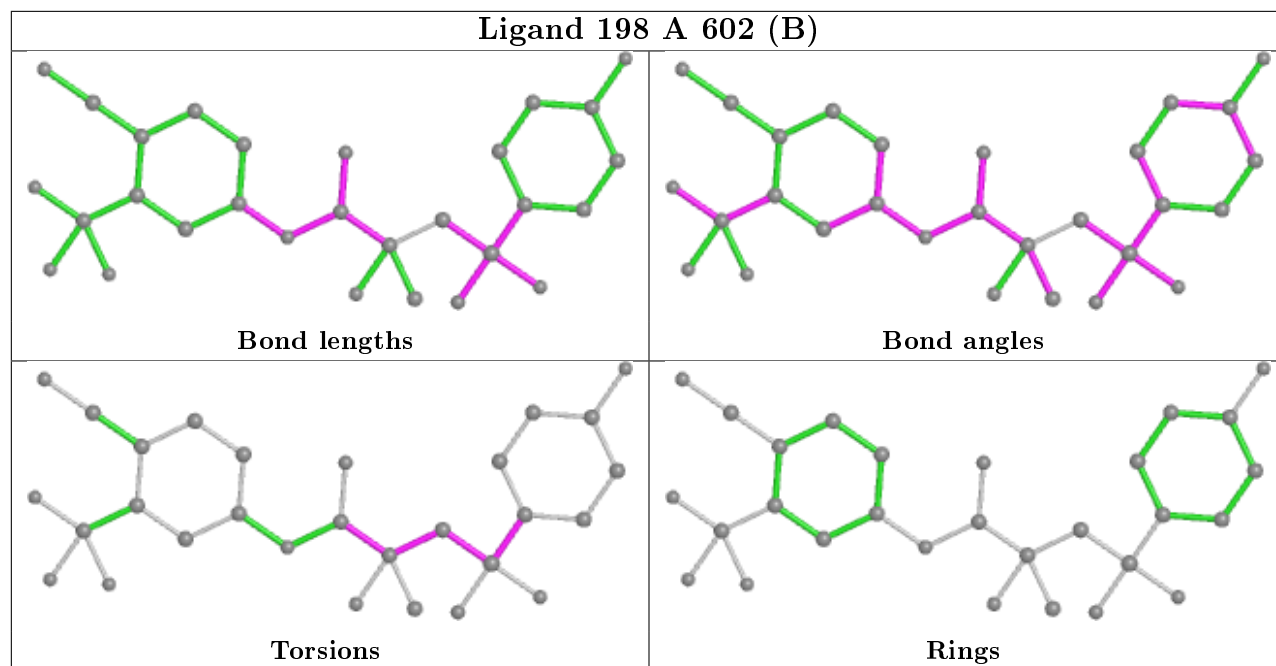
The following is a two-dimensional graphical depiction of Mogul quality analysis of bond lengths, bond angles, torsion angles, and ring geometry for all instances of the Ligand of Interest. In addition, ligands with molecular weight > 250 and outliers as shown on the validation Tables will also be included. For torsion angles, if less than 5% of the Mogul distribution of torsion angles is within 10 degrees of the torsion angle in question, then that torsion angle is considered an outlier. Any bond that is central to one or more torsion angles identified as an outlier by Mogul will be highlighted in the graph. For rings, the root-mean-square deviation (RMSD) between the ring in question and similar rings identified by Mogul is calculated over all ring torsion angles. If the average RMSD is greater than 60 degrees and the minimal RMSD between the ring in question and any Mogul-identified rings is also greater than 60 degrees, then that ring is considered an outlier. The outliers are highlighted in purple. The color gray indicates Mogul did not find sufficient equivalents in the CSD to analyse the geometry.

Ligand 0U9 A 601 (A)



Ligand HEM A 600





5.7 Other polymers [i](#)

There are no such residues in this entry.

5.8 Polymer linkage issues [i](#)

There are no chain breaks in this entry.

6 Fit of model and data ⓘ

6.1 Protein, DNA and RNA chains ⓘ

In the following table, the column labelled ‘#RSRZ> 2’ contains the number (and percentage) of RSRZ outliers, followed by percent RSRZ outliers for the chain as percentile scores relative to all X-ray entries and entries of similar resolution. The OWAB column contains the minimum, median, 95th percentile and maximum values of the occupancy-weighted average B-factor per residue. The column labelled ‘Q< 0.9’ lists the number of (and percentage) of residues with an average occupancy less than 0.9.

Mol	Chain	Analysed	<RSRZ>	#RSRZ>2	OWAB(Å ²)	Q<0.9
1	A	426/456 (93%)	0.92	65 (15%) 2 3	24, 46, 75, 93	0

All (65) RSRZ outliers are listed below:

Mol	Chain	Res	Type	RSRZ
1	A	237	ARG	5.0
1	A	80	PHE	4.9
1	A	287	GLN	4.6
1	A	306	THR	4.3
1	A	239	GLN	4.1
1	A	238	LYS	4.1
1	A	143	LEU	4.0
1	A	136	LYS	3.8
1	A	240	LEU	3.8
1	A	302	ALA	3.7
1	A	241	ARG	3.7
1	A	81	HIS	3.7
1	A	271	VAL	3.6
1	A	147	ARG	3.5
1	A	227	ASN	3.5
1	A	266	LYS	3.5
1	A	301	ILE	3.5
1	A	270	GLU	3.4
1	A	117	GLY	3.4
1	A	384	ARG	3.3
1	A	267	ARG	3.2
1	A	307	SER	3.2
1	A	308	ALA	3.2
1	A	226	ARG	3.2
1	A	139	ARG	3.1
1	A	79	VAL	3.1
1	A	191	ILE	3.1

Continued on next page...

Continued from previous page...

Mol	Chain	Res	Type	RSRZ
1	A	303	GLY	3.0
1	A	304	HIS	3.0
1	A	188	ALA	3.0
1	A	366	PRO	2.9
1	A	367	ALA	2.8
1	A	263	GLU	2.8
1	A	476	LEU	2.8
1	A	447	VAL	2.8
1	A	289	ASP	2.7
1	A	236	LYS	2.7
1	A	288	ASP	2.7
1	A	341	TYR	2.7
1	A	192	LEU	2.6
1	A	311	LEU	2.6
1	A	228	THR	2.6
1	A	175	GLN	2.6
1	A	361	LEU	2.6
1	A	368	TRP	2.5
1	A	244	ARG	2.5
1	A	116	PHE	2.5
1	A	76	ARG	2.4
1	A	222	ILE	2.4
1	A	299	PHE	2.4
1	A	475	THR	2.3
1	A	344	PHE	2.2
1	A	474	ALA	2.2
1	A	450	VAL	2.1
1	A	249	PHE	2.1
1	A	428	PHE	2.1
1	A	461	ARG	2.1
1	A	437	CYS	2.1
1	A	242	GLU	2.0
1	A	429	PRO	2.0
1	A	151	VAL	2.0
1	A	133	ARG	2.0
1	A	268	GLY	2.0
1	A	300	PHE	2.0
1	A	225	SER	2.0

6.2 Non-standard residues in protein, DNA, RNA chains ⓘ

There are no non-standard protein/DNA/RNA residues in this entry.

6.3 Carbohydrates [i](#)

There are no monosaccharides in this entry.

6.4 Ligands [i](#)

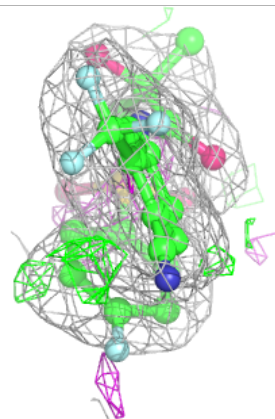
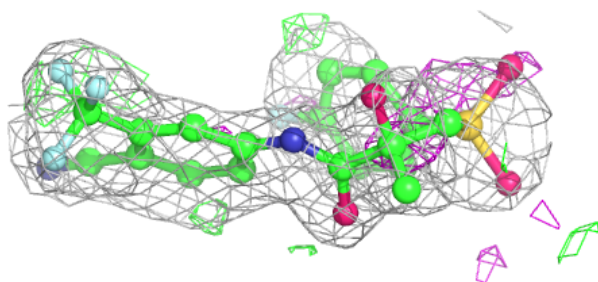
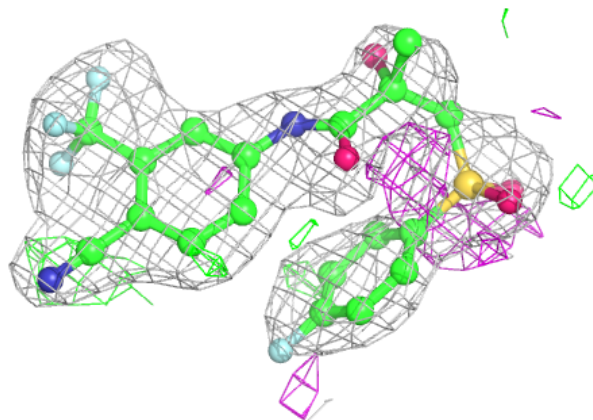
In the following table, the Atoms column lists the number of modelled atoms in the group and the number defined in the chemical component dictionary. The B-factors column lists the minimum, median, 95th percentile and maximum values of B factors of atoms in the group. The column labelled 'Q< 0.9' lists the number of atoms with occupancy less than 0.9.

Mol	Type	Chain	Res	Atoms	RSCC	RSR	B-factors(Å ²)	Q<0.9
3	0U9	A	601[A]	29/29	0.83	0.25	52,62,69,70	29
4	198	A	602[B]	29/29	0.83	0.25	57,64,69,70	29
5	GOL	A	603	6/6	0.88	0.14	71,71,71,72	0
2	HEM	A	600	43/43	0.98	0.22	22,28,36,42	0

The following is a graphical depiction of the model fit to experimental electron density of all instances of the Ligand of Interest. In addition, ligands with molecular weight > 250 and outliers as shown on the geometry validation Tables will also be included. Each fit is shown from different orientation to approximate a three-dimensional view.

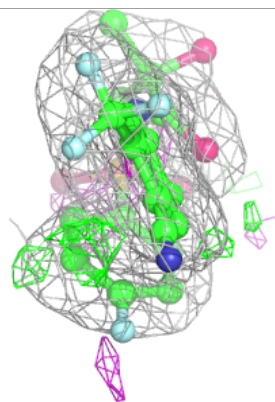
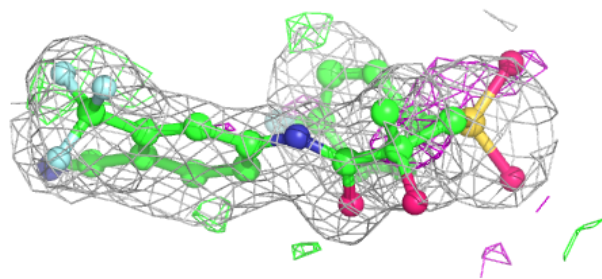
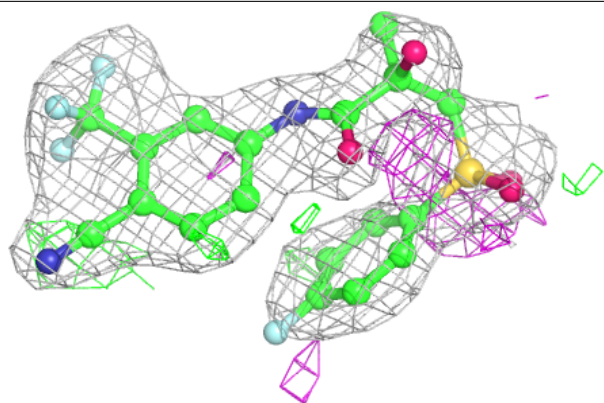
Electron density around 0U9 A 601 (A):

2mF_o-DF_c (at 0.7 rmsd) in gray
mF_o-DF_c (at 3 rmsd) in purple (negative)
and green (positive)



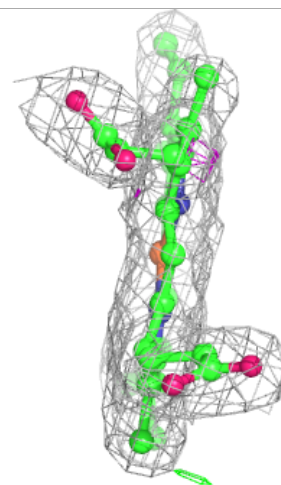
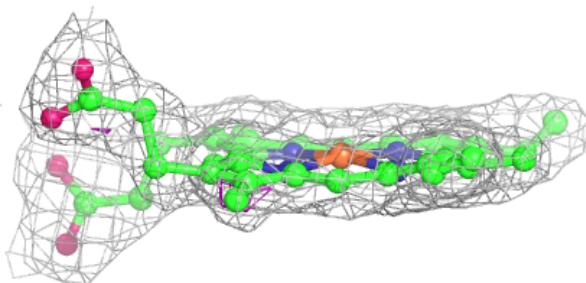
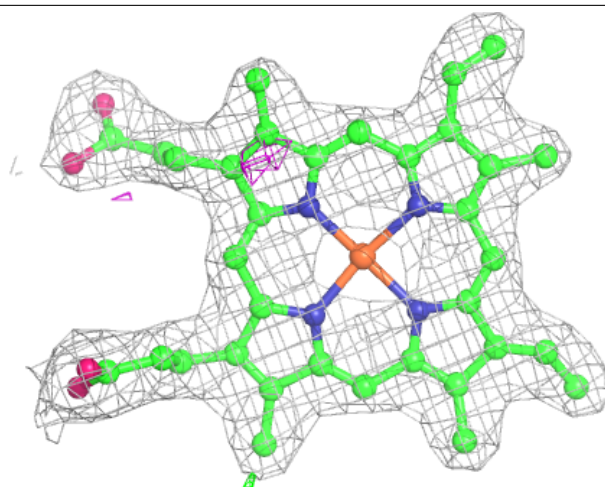
Electron density around 198 A 602 (B):

$2mF_o-DF_c$ (at 0.7 rmsd) in gray
 mF_o-DF_c (at 3 rmsd) in purple (negative)
and green (positive)



Electron density around HEM A 600:

$2mF_o-DF_c$ (at 0.7 rmsd) in gray
 mF_o-DF_c (at 3 rmsd) in purple (negative)
and green (positive)



6.5 Other polymers [i](#)

There are no such residues in this entry.