



wwPDB X-ray Structure Validation Summary Report ⓘ

May 22, 2020 – 04:16 am BST

PDB ID : 2FKY
Title : crystal structure of KSP in complex with inhibitor 13
Authors : Yan, Y.
Deposited on : 2006-01-05
Resolution : 2.30 Å(reported)

This is a wwPDB X-ray Structure Validation Summary Report for a publicly released PDB entry.

We welcome your comments at validation@mail.wwpdb.org

A user guide is available at

<https://www.wwpdb.org/validation/2017/XrayValidationReportHelp>

with specific help available everywhere you see the ⓘ symbol.

The following versions of software and data (see [references ⓘ](#)) were used in the production of this report:

MolProbity : 4.02b-467
Mogul : 1.8.5 (274361), CSD as541be (2020)
Xtriage (Phenix) : **NOT EXECUTED**
EDS : **NOT EXECUTED**
buster-report : 1.1.7 (2018)
Percentile statistics : 20191225.v01 (using entries in the PDB archive December 25th 2019)
Ideal geometry (proteins) : Engh & Huber (2001)
Ideal geometry (DNA, RNA) : Parkinson et al. (1996)
Validation Pipeline (wwPDB-VP) : 2.11

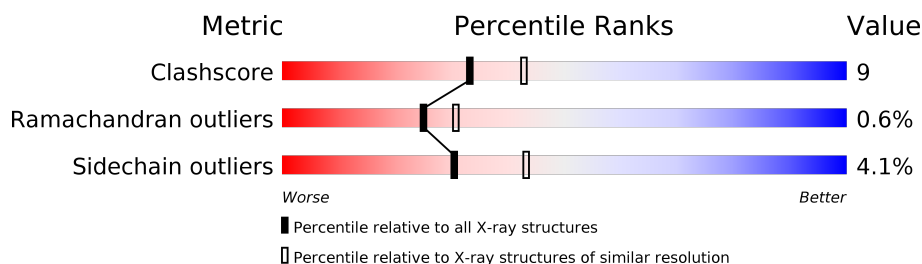
1 Overall quality at a glance

The following experimental techniques were used to determine the structure:

X-RAY DIFFRACTION

The reported resolution of this entry is 2.30 Å.

Percentile scores (ranging between 0-100) for global validation metrics of the entry are shown in the following graphic. The table shows the number of entries on which the scores are based.



Metric	Whole archive (#Entries)	Similar resolution (#Entries, resolution range(Å))
Clashscore	141614	5643 (2.30-2.30)
Ramachandran outliers	138981	5575 (2.30-2.30)
Sidechain outliers	138945	5575 (2.30-2.30)

The table below summarises the geometric issues observed across the polymeric chains and their fit to the electron density. The red, orange, yellow and green segments on the lower bar indicate the fraction of residues that contain outliers for ≥ 3 , 2, 1 and 0 types of geometric quality criteria respectively. A grey segment represents the fraction of residues that are not modelled. The numeric value for each fraction is indicated below the corresponding segment, with a dot representing fractions $\leq 5\%$.

Note EDS was not executed.

Mol	Chain	Length	Quality of chain
1	A	367	
1	B	367	

The following table lists non-polymeric compounds, carbohydrate monomers and non-standard residues in protein, DNA, RNA chains that are outliers for geometric or electron-density-fit criteria:

Mol	Type	Chain	Res	Chirality	Geometry	Clashes	Electron density
4	N2T	A	604	X	-	-	-

2 Entry composition [i](#)

There are 5 unique types of molecules in this entry. The entry contains 5523 atoms, of which 0 are hydrogens and 0 are deuteriums.

In the tables below, the ZeroOcc column contains the number of atoms modelled with zero occupancy, the AltConf column contains the number of residues with at least one atom in alternate conformation and the Trace column contains the number of residues modelled with at most 2 atoms.

- Molecule 1 is a protein called Kinesin-like protein KIF11.

Mol	Chain	Residues	Atoms					ZeroOcc	AltConf	Trace
1	A	330	Total	C	N	O	S	0	0	0
			2594	1624	452	508	10			
1	B	330	Total	C	N	O	S	0	0	0
			2594	1624	452	508	10			

- Molecule 2 is MAGNESIUM ION (three-letter code: MG) (formula: Mg).

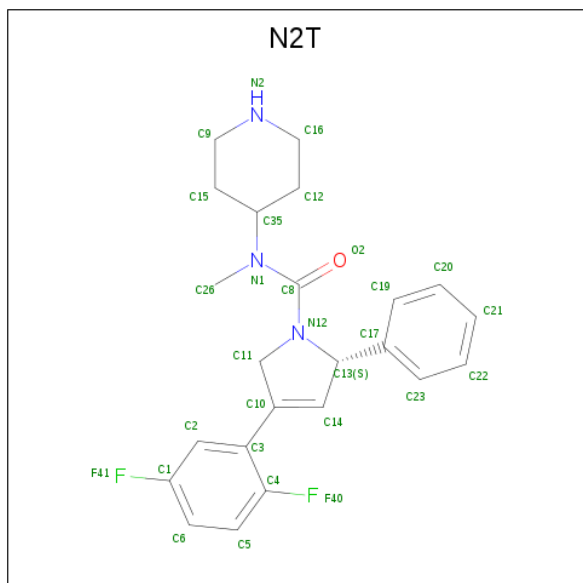
Mol	Chain	Residues	Atoms		ZeroOcc	AltConf
2	B	1	Total	Mg	0	0
			1	1		
2	A	1	Total	Mg	0	0
			1	1		

- Molecule 3 is ADENOSINE-5'-DIPHOSPHATE (three-letter code: ADP) (formula: $C_{10}H_{15}N_5O_{10}P_2$).



Mol	Chain	Residues	Atoms					ZeroOcc	AltConf
3	A	1	Total	C	N	O	P	0	0
			27	10	5	10	2		
3	B	1	Total	C	N	O	P	0	0
			27	10	5	10	2		

- Molecule 4 is (2S)-4-(2,5-DIFLUOROPHENYL)-N-METHYL-2-PHENYL-N-PIPERIDIN-4-YL-2,5-DIHYDRO-1H-PYRROLE-1-CARBOXAMIDE (three-letter code: N2T) (formula: C₂₃H₂₅F₂N₃O).



Mol	Chain	Residues	Atoms					ZeroOcc	AltConf
4	A	1	Total	C	F	N	O	0	0
			29	23	2	3	1		
4	B	1	Total	C	F	N	O	0	0
			29	23	2	3	1		

- Molecule 5 is water.

Mol	Chain	Residues	Atoms		ZeroOcc	AltConf
5	A	108	Total	O	0	0
			108	108		
5	B	113	Total	O	0	0
			113	113		

4 Data and refinement statistics

Xtriage (Phenix) and EDS were not executed - this section is therefore incomplete.

Property	Value	Source
Space group	P 21 21 21	Depositor
Cell constants a, b, c, α , β , γ	69.20 Å 79.60 Å 159.00 Å 90.00° 90.00° 90.00°	Depositor
Resolution (Å)	50.00 – 2.30	Depositor
% Data completeness (in resolution range)	96.0 (50.00-2.30)	Depositor
R_{merge}	(Not available)	Depositor
R_{sym}	0.06	Depositor
Refinement program	CNS	Depositor
R, R_{free}	0.235 , 0.273	Depositor
Estimated twinning fraction	No twinning to report.	Xtriage
Total number of atoms	5523	wwPDB-VP
Average B, all atoms (Å ²)	30.0	wwPDB-VP

5 Model quality [i](#)

5.1 Standard geometry [i](#)

Bond lengths and bond angles in the following residue types are not validated in this section: MG, ADP, N2T

The Z score for a bond length (or angle) is the number of standard deviations the observed value is removed from the expected value. A bond length (or angle) with $|Z| > 5$ is considered an outlier worth inspection. RMSZ is the root-mean-square of all Z scores of the bond lengths (or angles).

Mol	Chain	Bond lengths		Bond angles	
		RMSZ	# Z >5	RMSZ	# Z >5
1	A	0.45	0/2632	0.64	0/3559
1	B	0.45	0/2632	0.65	0/3559
All	All	0.45	0/5264	0.65	0/7118

There are no bond length outliers.

There are no bond angle outliers.

There are no chirality outliers.

There are no planarity outliers.

5.2 Too-close contacts [i](#)

In the following table, the Non-H and H(model) columns list the number of non-hydrogen atoms and hydrogen atoms in the chain respectively. The H(added) column lists the number of hydrogen atoms added and optimized by MolProbity. The Clashes column lists the number of clashes within the asymmetric unit, whereas Symm-Clashes lists symmetry related clashes.

Mol	Chain	Non-H	H(model)	H(added)	Clashes	Symm-Clashes
1	A	2594	0	2618	43	0
1	B	2594	0	2618	45	0
2	A	1	0	0	0	0
2	B	1	0	0	0	0
3	A	27	0	12	0	0
3	B	27	0	12	0	0
4	A	29	0	24	2	0
4	B	29	0	24	1	0
5	A	108	0	0	2	0
5	B	113	0	0	3	0
All	All	5523	0	5308	91	0

The all-atom clashscore is defined as the number of clashes found per 1000 atoms (including hydrogen atoms). The all-atom clashscore for this structure is 9.

The worst 5 of 91 close contacts within the same asymmetric unit are listed below, sorted by their clash magnitude.

Atom-1	Atom-2	Interatomic distance (Å)	Clash overlap (Å)
1:A:250:ILE:H	1:A:250:ILE:HD13	1.52	0.74
4:A:604:N2T:H262	4:A:604:N2T:H112	1.70	0.72
1:A:361:ASN:O	1:A:362:LYS:HB2	1.91	0.70
1:B:40:ILE:HD13	1:B:340:SER:HA	1.74	0.68
1:A:167:GLU:HG2	1:A:181:ARG:HE	1.59	0.68

There are no symmetry-related clashes.

5.3 Torsion angles [i](#)

5.3.1 Protein backbone [i](#)

In the following table, the Percentiles column shows the percent Ramachandran outliers of the chain as a percentile score with respect to all X-ray entries followed by that with respect to entries of similar resolution.

The Analysed column shows the number of residues for which the backbone conformation was analysed, and the total number of residues.

Mol	Chain	Analysed	Favoured	Allowed	Outliers	Percentiles	
1	A	326/367 (89%)	312 (96%)	11 (3%)	3 (1%)	17	20
1	B	326/367 (89%)	320 (98%)	5 (2%)	1 (0%)	41	50
All	All	652/734 (89%)	632 (97%)	16 (2%)	4 (1%)	25	31

All (4) Ramachandran outliers are listed below:

Mol	Chain	Res	Type
1	A	252	GLY
1	B	190	ASN
1	A	57	LEU
1	A	151	GLY

5.3.2 Protein sidechains ⓘ

In the following table, the Percentiles column shows the percent sidechain outliers of the chain as a percentile score with respect to all X-ray entries followed by that with respect to entries of similar resolution.

The Analysed column shows the number of residues for which the sidechain conformation was analysed, and the total number of residues.

Mol	Chain	Analysed	Rotameric	Outliers	Percentiles	
1	A	293 / 321 (91%)	281 (96%)	12 (4%)	30	43
1	B	293 / 321 (91%)	281 (96%)	12 (4%)	30	43
All	All	586 / 642 (91%)	562 (96%)	24 (4%)	30	43

5 of 24 residues with a non-rotameric sidechain are listed below:

Mol	Chain	Res	Type
1	A	330	THR
1	B	57	LEU
1	B	327	ARG
1	A	361	ASN
1	B	26	ARG

Some sidechains can be flipped to improve hydrogen bonding and reduce clashes. 5 of 14 such sidechains are listed below:

Mol	Chain	Res	Type
1	A	361	ASN
1	B	173	ASN
1	B	271	ASN
1	A	342	ASN
1	B	262	ASN

5.3.3 RNA ⓘ

There are no RNA molecules in this entry.

5.4 Non-standard residues in protein, DNA, RNA chains ⓘ

There are no non-standard protein/DNA/RNA residues in this entry.

5.5 Carbohydrates [i](#)

There are no carbohydrates in this entry.

5.6 Ligand geometry [i](#)

Of 6 ligands modelled in this entry, 2 are monoatomic - leaving 4 for Mogul analysis.

In the following table, the Counts columns list the number of bonds (or angles) for which Mogul statistics could be retrieved, the number of bonds (or angles) that are observed in the model and the number of bonds (or angles) that are defined in the Chemical Component Dictionary. The Link column lists molecule types, if any, to which the group is linked. The Z score for a bond length (or angle) is the number of standard deviations the observed value is removed from the expected value. A bond length (or angle) with $|Z| > 2$ is considered an outlier worth inspection. RMSZ is the root-mean-square of all Z scores of the bond lengths (or angles).

Mol	Type	Chain	Res	Link	Bond lengths			Bond angles		
					Counts	RMSZ	# Z > 2	Counts	RMSZ	# Z > 2
4	N2T	A	604	-	31,32,32	2.70	16 (51%)	35,45,45	1.77	7 (20%)
3	ADP	B	600	2	24,29,29	1.55	5 (20%)	29,45,45	1.57	2 (6%)
3	ADP	A	601	2	24,29,29	1.46	4 (16%)	29,45,45	1.49	1 (3%)
4	N2T	B	605	-	31,32,32	2.78	17 (54%)	35,45,45	2.36	9 (25%)

In the following table, the Chirals column lists the number of chiral outliers, the number of chiral centers analysed, the number of these observed in the model and the number defined in the Chemical Component Dictionary. Similar counts are reported in the Torsion and Rings columns. '-' means no outliers of that kind were identified.

Mol	Type	Chain	Res	Link	Chirals	Torsions	Rings
4	N2T	A	604	-	1/1/6/8	7/20/40/40	0/4/4/4
3	ADP	B	600	2	-	7/12/32/32	0/3/3/3
3	ADP	A	601	2	-	7/12/32/32	0/3/3/3
4	N2T	B	605	-	-	5/20/40/40	0/4/4/4

The worst 5 of 42 bond length outliers are listed below:

Mol	Chain	Res	Type	Atoms	Z	Observed(Å)	Ideal(Å)
4	A	604	N2T	C14-C10	7.30	1.47	1.34
4	B	605	N2T	C14-C10	7.14	1.47	1.34
4	B	605	N2T	C17-C13	-5.39	1.46	1.52
4	B	605	N2T	C23-C17	4.86	1.46	1.39
4	A	604	N2T	C19-C17	4.56	1.46	1.39

The worst 5 of 19 bond angle outliers are listed below:

Mol	Chain	Res	Type	Atoms	Z	Observed(°)	Ideal(°)
4	B	605	N2T	C26-N1-C35	-9.27	107.25	117.89
3	B	600	ADP	N3-C2-N1	-6.86	117.96	128.68
3	A	601	ADP	N3-C2-N1	-6.56	118.42	128.68
4	A	604	N2T	C26-N1-C35	-5.26	111.85	117.89
4	B	605	N2T	C17-C13-C14	4.75	125.50	112.88

All (1) chirality outliers are listed below:

Mol	Chain	Res	Type	Atom
4	A	604	N2T	C13

5 of 26 torsion outliers are listed below:

Mol	Chain	Res	Type	Atoms
4	A	604	N2T	C15-C35-N1-C8
4	A	604	N2T	C12-C35-N1-C8
4	A	604	N2T	C15-C35-N1-C26
4	A	604	N2T	C12-C35-N1-C26
3	A	601	ADP	PA-O3A-PB-O2B

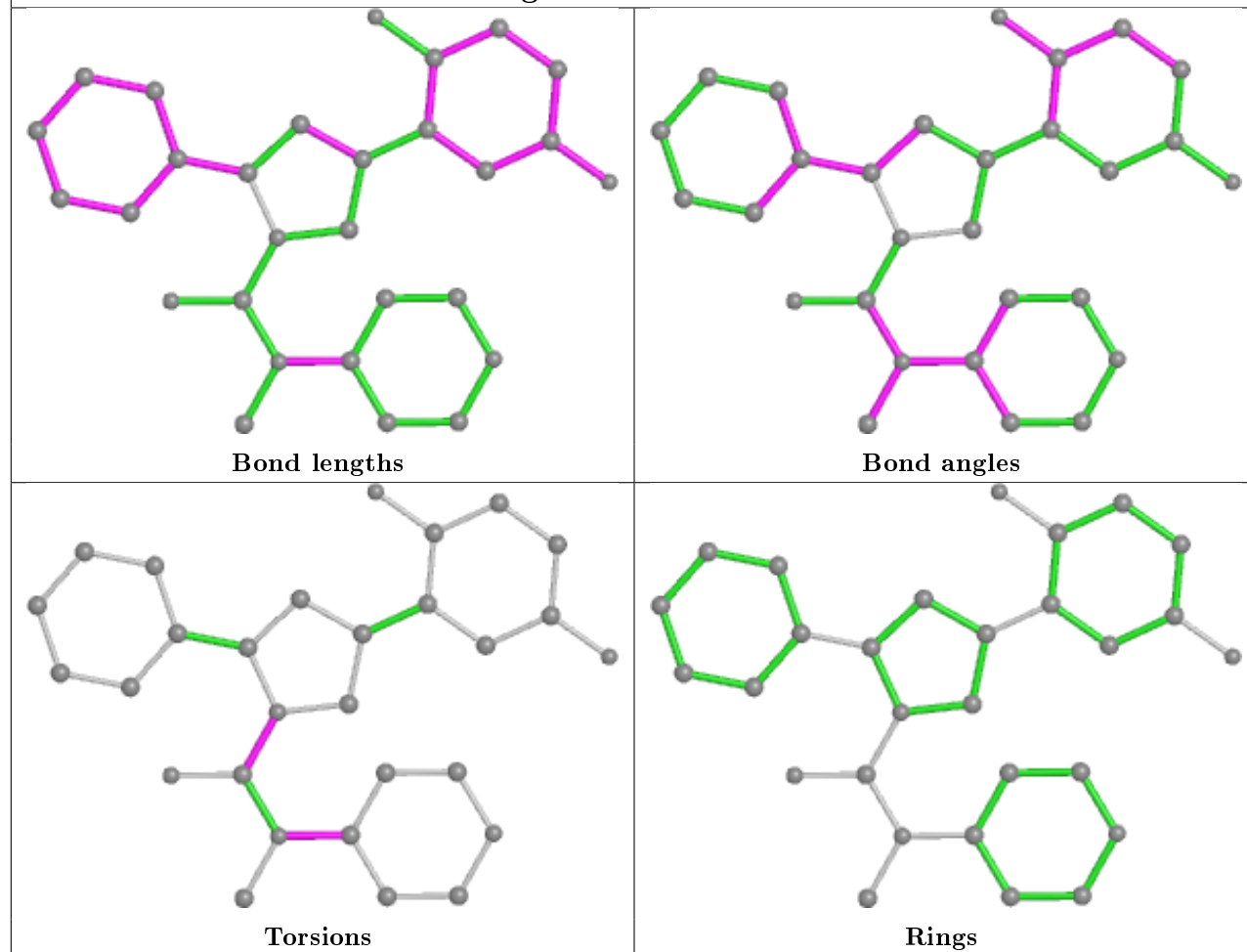
There are no ring outliers.

2 monomers are involved in 3 short contacts:

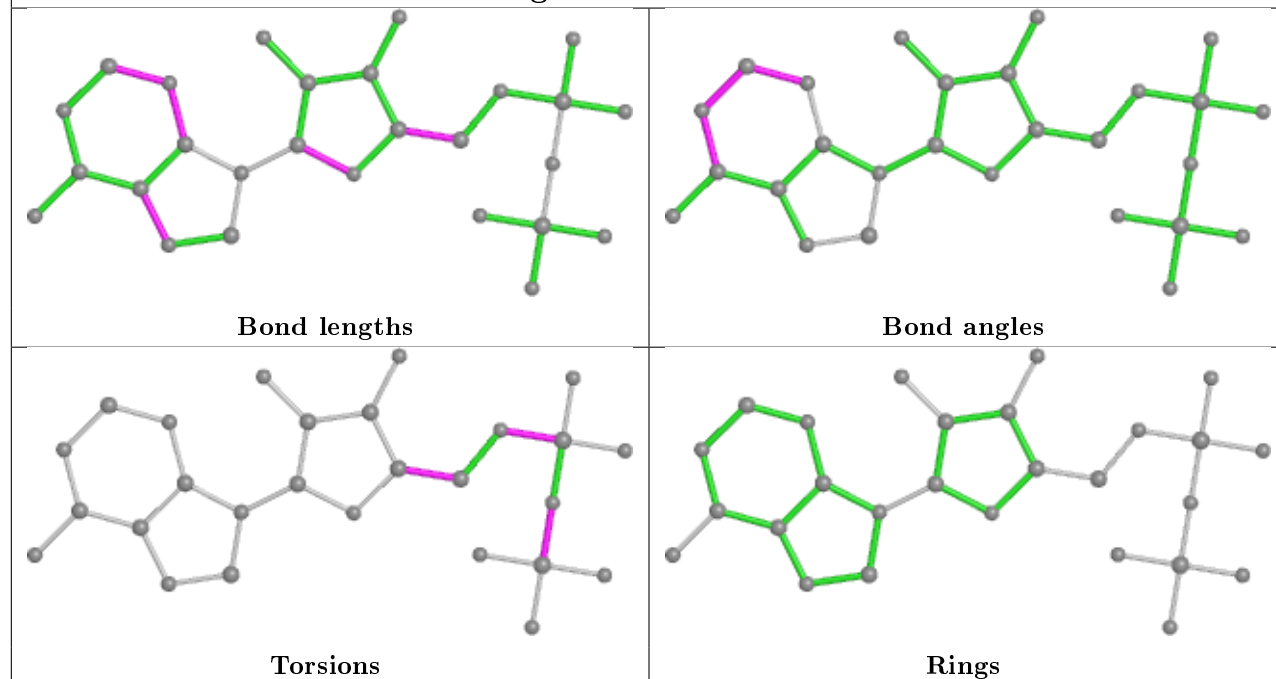
Mol	Chain	Res	Type	Clashes	Symm-Clashes
4	A	604	N2T	2	0
4	B	605	N2T	1	0

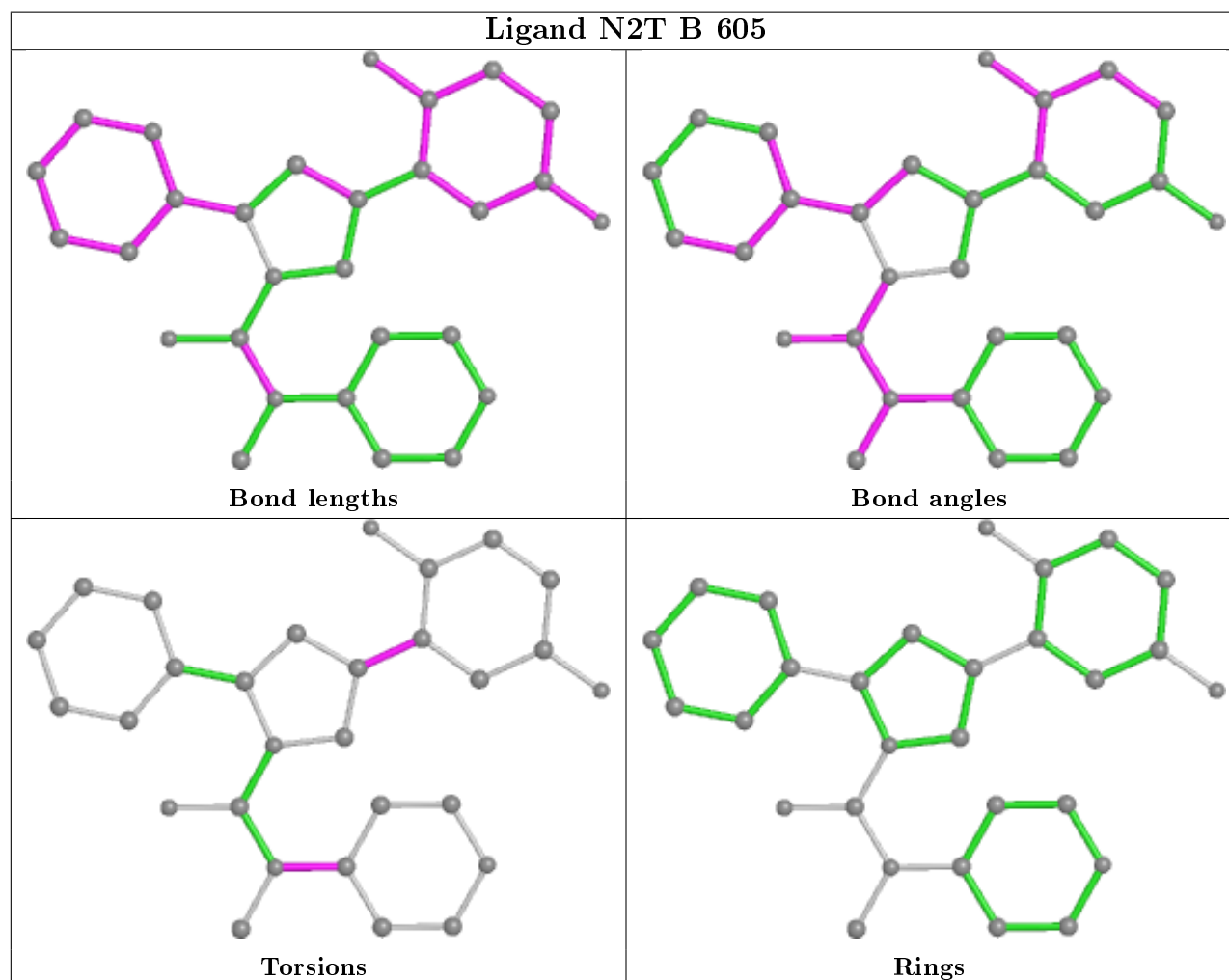
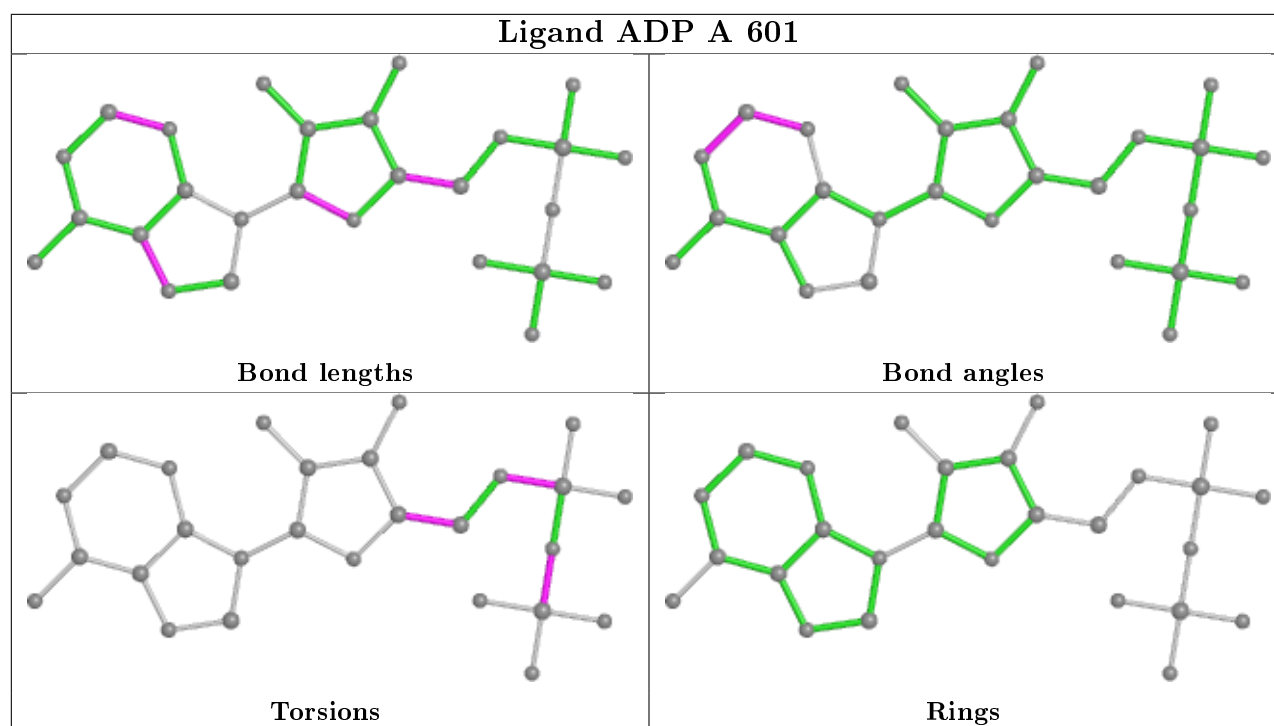
The following is a two-dimensional graphical depiction of Mogul quality analysis of bond lengths, bond angles, torsion angles, and ring geometry for all instances of the Ligand of Interest. In addition, ligands with molecular weight > 250 and outliers as shown on the validation Tables will also be included. For torsion angles, if less than 5% of the Mogul distribution of torsion angles is within 10 degrees of the torsion angle in question, then that torsion angle is considered an outlier. Any bond that is central to one or more torsion angles identified as an outlier by Mogul will be highlighted in the graph. For rings, the root-mean-square deviation (RMSD) between the ring in question and similar rings identified by Mogul is calculated over all ring torsion angles. If the average RMSD is greater than 60 degrees and the minimal RMSD between the ring in question and any Mogul-identified rings is also greater than 60 degrees, then that ring is considered an outlier. The outliers are highlighted in purple. The color gray indicates Mogul did not find sufficient equivalents in the CSD to analyse the geometry.

Ligand N2T A 604



Ligand ADP B 600





5.7 Other polymers [i](#)

There are no such residues in this entry.

5.8 Polymer linkage issues [i](#)

There are no chain breaks in this entry.

6 Fit of model and data ⓘ

6.1 Protein, DNA and RNA chains ⓘ

EDS was not executed - this section is therefore empty.

6.2 Non-standard residues in protein, DNA, RNA chains ⓘ

EDS was not executed - this section is therefore empty.

6.3 Carbohydrates ⓘ

EDS was not executed - this section is therefore empty.

6.4 Ligands ⓘ

EDS was not executed - this section is therefore empty.

6.5 Other polymers ⓘ

EDS was not executed - this section is therefore empty.