



Full wwPDB X-ray Structure Validation Report ⓘ

May 12, 2020 – 11:13 pm BST

PDB ID : 2FQI
Title : dual binding modes of a novel series of DHODH inhibitors
Authors : Baumgartner, R.; Leban, J.
Deposited on : 2006-01-18
Resolution : 1.95 Å(reported)

This is a Full wwPDB X-ray Structure Validation Report for a publicly released PDB entry.

We welcome your comments at validation@mail.wwpdb.org

A user guide is available at

<https://www.wwpdb.org/validation/2017/XrayValidationReportHelp>

with specific help available everywhere you see the ⓘ symbol.

The following versions of software and data (see [references ⓘ](#)) were used in the production of this report:

MolProbity : 4.02b-467
Mogul : 1.8.5 (274361), CSD as541be (2020)
Xtriage (Phenix) : **NOT EXECUTED**
EDS : **NOT EXECUTED**
buster-report : 1.1.7 (2018)
Percentile statistics : 20191225.v01 (using entries in the PDB archive December 25th 2019)
Ideal geometry (proteins) : Engh & Huber (2001)
Ideal geometry (DNA, RNA) : Parkinson et al. (1996)
Validation Pipeline (wwPDB-VP) : 2.11

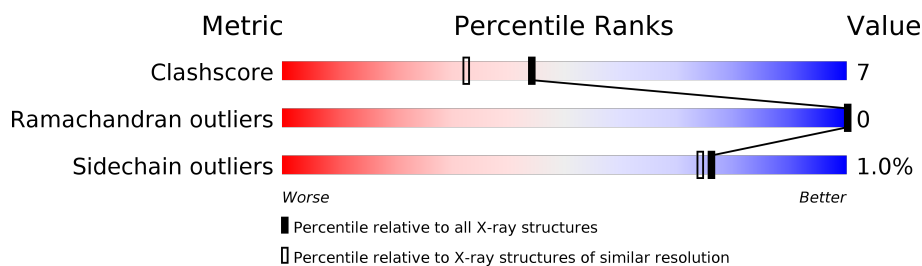
1 Overall quality at a glance

The following experimental techniques were used to determine the structure:

X-RAY DIFFRACTION

The reported resolution of this entry is 1.95 Å.


Percentile scores (ranging between 0-100) for global validation metrics of the entry are shown in the following graphic. The table shows the number of entries on which the scores are based.



Metric	Whole archive (#Entries)	Similar resolution (#Entries, resolution range(Å))
Clashscore	141614	2705 (1.96-1.96)
Ramachandran outliers	138981	2678 (1.96-1.96)
Sidechain outliers	138945	2678 (1.96-1.96)

The table below summarises the geometric issues observed across the polymeric chains and their fit to the electron density. The red, orange, yellow and green segments on the lower bar indicate the fraction of residues that contain outliers for ≥ 3 , 2, 1 and 0 types of geometric quality criteria respectively. A grey segment represents the fraction of residues that are not modelled. The numeric value for each fraction is indicated below the corresponding segment, with a dot representing fractions $\leq 5\%$.

Note EDS was not executed.

Mol	Chain	Length	Quality of chain
1	A	395	

The following table lists non-polymeric compounds, carbohydrate monomers and non-standard residues in protein, DNA, RNA chains that are outliers for geometric or electron-density-fit criteria:

Mol	Type	Chain	Res	Chirality	Geometry	Clashes	Electron density
3	ACT	A	602	-	-	X	-

2 Entry composition

There are 7 unique types of molecules in this entry. The entry contains 3162 atoms, of which 0 are hydrogens and 0 are deuteriums.

In the tables below, the ZeroOcc column contains the number of atoms modelled with zero occupancy, the AltConf column contains the number of residues with at least one atom in alternate conformation and the Trace column contains the number of residues modelled with at most 2 atoms.

- Molecule 1 is a protein called Dihydroorotate dehydrogenase, mitochondrial.

Mol	Chain	Residues	Atoms					ZeroOcc	AltConf	Trace
1	A	362	Total	C	N	O	S	7	0	0
			2770	1738	512	516	4			

There are 28 discrepancies between the modelled and reference sequences:

Chain	Residue	Modelled	Actual	Comment	Reference
A	2	MET	-	CLONING ARTIFACT	UNP Q02127
A	3	GLY	-	CLONING ARTIFACT	UNP Q02127
A	4	HIS	-	EXPRESSION TAG	UNP Q02127
A	5	HIS	-	EXPRESSION TAG	UNP Q02127
A	6	HIS	-	EXPRESSION TAG	UNP Q02127
A	7	HIS	-	EXPRESSION TAG	UNP Q02127
A	8	HIS	-	EXPRESSION TAG	UNP Q02127
A	9	HIS	-	EXPRESSION TAG	UNP Q02127
A	10	HIS	-	EXPRESSION TAG	UNP Q02127
A	11	HIS	-	EXPRESSION TAG	UNP Q02127
A	12	HIS	-	EXPRESSION TAG	UNP Q02127
A	13	HIS	-	EXPRESSION TAG	UNP Q02127
A	14	SER	-	CLONING ARTIFACT	UNP Q02127
A	15	SER	-	CLONING ARTIFACT	UNP Q02127
A	16	GLY	-	CLONING ARTIFACT	UNP Q02127
A	17	HIS	-	CLONING ARTIFACT	UNP Q02127
A	18	ILE	-	CLONING ARTIFACT	UNP Q02127
A	19	ASP	-	CLONING ARTIFACT	UNP Q02127
A	20	ASP	-	CLONING ARTIFACT	UNP Q02127
A	21	ASP	-	CLONING ARTIFACT	UNP Q02127
A	22	ASP	-	CLONING ARTIFACT	UNP Q02127
A	23	LYS	-	CLONING ARTIFACT	UNP Q02127
A	24	HIS	-	CLONING ARTIFACT	UNP Q02127
A	25	MET	-	CLONING ARTIFACT	UNP Q02127
A	26	LEU	-	CLONING ARTIFACT	UNP Q02127
A	27	GLU	-	CLONING ARTIFACT	UNP Q02127
A	28	ASP	-	CLONING ARTIFACT	UNP Q02127

Continued on next page...

Continued from previous page...

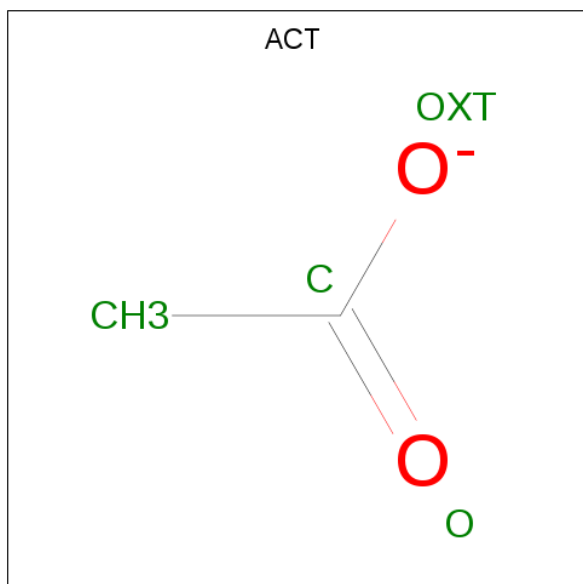
Chain	Residue	Modelled	Actual	Comment	Reference
A	29	PRO	-	CLONING ARTIFACT	UNP Q02127

- Molecule 2 is SULFATE ION (three-letter code: SO4) (formula: O₄S).



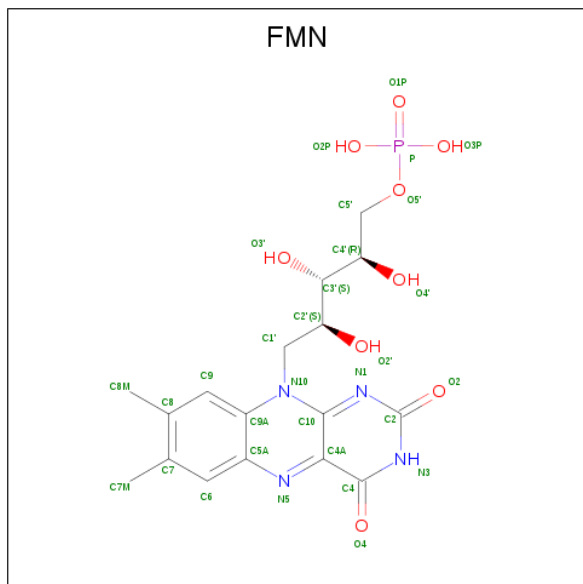
Mol	Chain	Residues	Atoms			ZeroOcc	AltConf
2	A	1	Total	O	S	0	0
			5	4	1		
2	A	1	Total	O	S	0	0
			5	4	1		

- Molecule 3 is ACETATE ION (three-letter code: ACT) (formula: C₂H₃O₂).



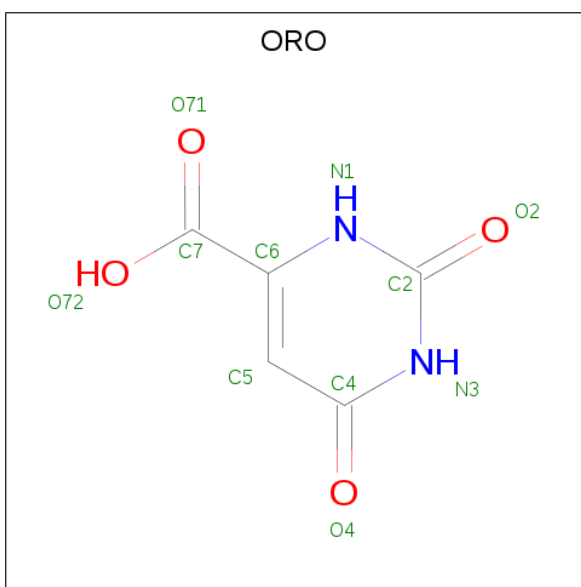
Mol	Chain	Residues	Atoms			ZeroOcc	AltConf
3	A	1	Total	C	O	0	0
			4	2	2		
3	A	1	Total	C	O	0	0
			4	2	2		
3	A	1	Total	C	O	0	0
			4	2	2		

- Molecule 4 is FLAVIN MONONUCLEOTIDE (three-letter code: FMN) (formula: $C_{17}H_{21}N_4O_9P$).



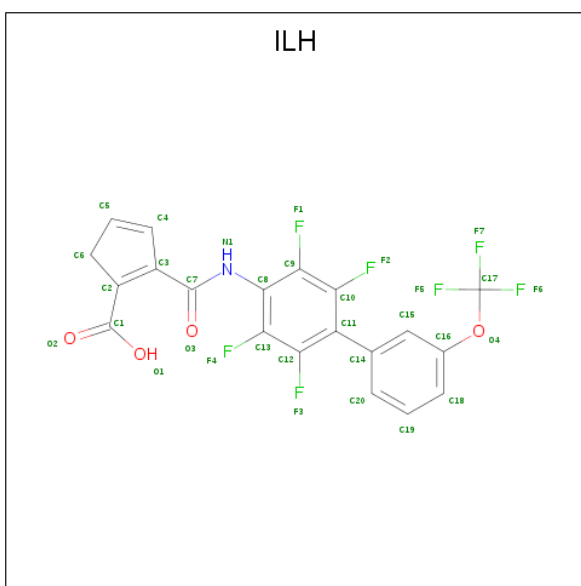
Mol	Chain	Residues	Atoms					ZeroOcc	AltConf
4	A	1	Total	C	N	O	P	0	0
			31	17	4	9	1		

- Molecule 5 is OROTIC ACID (three-letter code: ORO) (formula: $C_5H_4N_2O_4$).



Mol	Chain	Residues	Atoms				ZeroOcc	AltConf
5	A	1	Total	C	N	O	0	0
			11	5	2	4		

- Molecule 6 is 2-([2,3,5,6-TETRAFLUORO-3'-(TRIFLUOROMETHOXY)BIPHENYL-4-YL]AMINO)CARBONYL)CYCLOPENTA-1,3-DIENE-1-CARBOXYLIC ACID (three-letter code: ILH) (formula: $C_{20}H_{10}F_7NO_4$).



Mol	Chain	Residues	Atoms					ZeroOcc	AltConf
6	A	1	Total	C	F	N	O	0	1
			64	40	14	2	8		

- Molecule 7 is water.

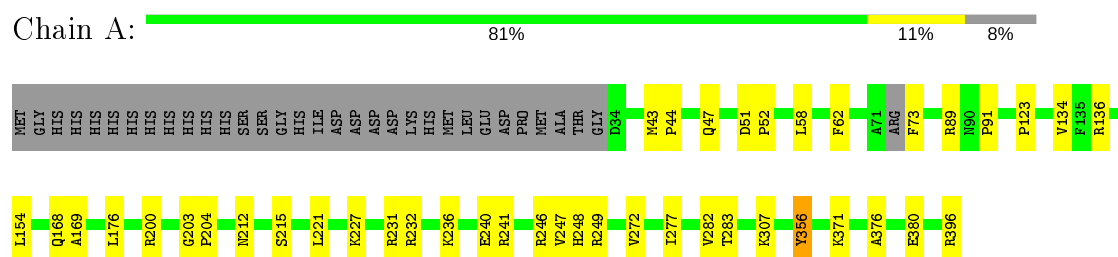
Mol	Chain	Residues	Atoms		ZeroOcc	AltConf
7	A	264	Total 264	O 264	0	0

3 Residue-property plots

These plots are drawn for all protein, RNA and DNA chains in the entry. The first graphic for a chain summarises the proportions of the various outlier classes displayed in the second graphic. The second graphic shows the sequence view annotated by issues in geometry. Residues are color-coded according to the number of geometric quality criteria for which they contain at least one outlier: green = 0, yellow = 1, orange = 2 and red = 3 or more. Stretches of 2 or more consecutive residues without any outlier are shown as a green connector. Residues present in the sample, but not in the model, are shown in grey.

Note EDS was not executed.

- Molecule 1: Dihydroorotate dehydrogenase, mitochondrial



4 Data and refinement statistics

Xtriage (Phenix) and EDS were not executed - this section is therefore incomplete.

Property	Value	Source
Space group	P 3 2 2 1	Depositor
Cell constants a, b, c, α , β , γ	90.43 Å 90.43 Å 123.00 Å 90.00° 90.00° 120.00°	Depositor
Resolution (Å)	19.90 – 1.95	Depositor
% Data completeness (in resolution range)	99.7 (19.90-1.95)	Depositor
R_{merge}	0.08	Depositor
R_{sym}	(Not available)	Depositor
Refinement program	CNS, CNX 2002	Depositor
R, R_{free}	0.185 , 0.202	Depositor
Estimated twinning fraction	No twinning to report.	Xtriage
Total number of atoms	3162	wwPDB-VP
Average B, all atoms (Å ²)	22.0	wwPDB-VP

5 Model quality [i](#)

5.1 Standard geometry [i](#)

Bond lengths and bond angles in the following residue types are not validated in this section: FMN, ORO, SO4, ILH, ACT

The Z score for a bond length (or angle) is the number of standard deviations the observed value is removed from the expected value. A bond length (or angle) with $|Z| > 5$ is considered an outlier worth inspection. RMSZ is the root-mean-square of all Z scores of the bond lengths (or angles).

Mol	Chain	Bond lengths		Bond angles	
		RMSZ	$\# Z > 5$	RMSZ	$\# Z > 5$
1	A	0.26	0/2815	0.58	0/3802

There are no bond length outliers.

There are no bond angle outliers.

There are no chirality outliers.

There are no planarity outliers.

5.2 Too-close contacts [i](#)

In the following table, the Non-H and H(model) columns list the number of non-hydrogen atoms and hydrogen atoms in the chain respectively. The H(added) column lists the number of hydrogen atoms added and optimized by MolProbity. The Clashes column lists the number of clashes within the asymmetric unit, whereas Symm-Clashes lists symmetry related clashes.

Mol	Chain	Non-H	H(model)	H(added)	Clashes	Symm-Clashes
1	A	2770	0	2832	36	0
2	A	10	0	0	0	0
3	A	12	0	9	3	0
4	A	31	0	19	0	0
5	A	11	0	3	0	0
6	A	64	0	18	4	0
7	A	264	0	0	3	0
All	All	3162	0	2881	38	0

The all-atom clashscore is defined as the number of clashes found per 1000 atoms (including hydrogen atoms). The all-atom clashscore for this structure is 7.

All (38) close contacts within the same asymmetric unit are listed below, sorted by their clash magnitude.

Atom-1	Atom-2	Interatomic distance (Å)	Clash overlap (Å)
1:A:89:ARG:HD2	1:A:176:LEU:HD21	1.75	0.69
1:A:232:ARG:NH1	1:A:232:ARG:HB2	2.08	0.68
1:A:169:ALA:HA	3:A:602:ACT:H1	1.81	0.63
3:A:602:ACT:H3	7:A:710:HOH:O	2.01	0.61
1:A:136:ARG:HE	6:A:600[B]:ILH:H4	1.65	0.59
1:A:246:ARG:HG3	1:A:246:ARG:HH11	1.66	0.59
1:A:272:VAL:HG13	1:A:277:ILE:HB	1.86	0.57
1:A:215:SER:HB3	1:A:221:LEU:HD23	1.89	0.54
1:A:307:LYS:HD3	7:A:910:HOH:O	2.06	0.54
1:A:236:LYS:HE3	7:A:887:HOH:O	2.07	0.54
1:A:168:GLN:HG3	3:A:602:ACT:H2	1.89	0.54
1:A:227:LYS:HE2	1:A:231:ARG:NH2	2.25	0.52
1:A:43:MET:HB2	1:A:44:PRO:HD3	1.91	0.51
1:A:241:ARG:HD2	1:A:241:ARG:C	2.31	0.51
1:A:356:TYR:HH	6:A:600[A]:ILH:H4	1.77	0.49
1:A:89:ARG:CD	1:A:176:LEU:HD21	2.43	0.49
1:A:376:ALA:O	1:A:380:GLU:HG3	2.14	0.48
1:A:52:PRO:HB2	1:A:134:VAL:HG13	1.97	0.47
1:A:396:ARG:HG3	1:A:396:ARG:HH21	1.81	0.46
1:A:227:LYS:HE2	1:A:231:ARG:HH22	1.80	0.46
1:A:58:LEU:HD11	1:A:62:PHE:CE1	2.51	0.46
1:A:203:GLY:N	1:A:204:PRO:CD	2.79	0.45
1:A:282:VAL:HA	1:A:283:THR:HA	1.76	0.45
1:A:47:GLN:HE21	6:A:600[B]:ILH:H4	1.82	0.45
1:A:73:PHE:CD2	1:A:371:LYS:HE3	2.53	0.44
1:A:123:PRO:HA	1:A:154:LEU:CD1	2.48	0.44
1:A:246:ARG:NH1	1:A:246:ARG:HG3	2.31	0.43
1:A:123:PRO:HA	1:A:154:LEU:HD12	2.01	0.43
1:A:356:TYR:C	1:A:356:TYR:CD2	2.92	0.42
1:A:200:ARG:NH1	1:A:240:GLU:OE2	2.45	0.42
6:A:600[A]:ILH:N1	6:A:600[A]:ILH:O2	2.46	0.42
1:A:51:ASP:HB2	1:A:52:PRO:HD2	2.02	0.41
1:A:282:VAL:CG1	1:A:283:THR:HG22	2.50	0.41
1:A:232:ARG:CZ	1:A:232:ARG:HB2	2.51	0.41
1:A:246:ARG:NH1	1:A:249:ARG:HH22	2.19	0.41
1:A:282:VAL:HG13	1:A:283:THR:HG22	2.03	0.41
1:A:247:VAL:HG23	1:A:248:HIS:CD2	2.56	0.40
1:A:232:ARG:HH11	1:A:232:ARG:CB	2.34	0.40

There are no symmetry-related clashes.

5.3 Torsion angles [i](#)

5.3.1 Protein backbone [i](#)

In the following table, the Percentiles column shows the percent Ramachandran outliers of the chain as a percentile score with respect to all X-ray entries followed by that with respect to entries of similar resolution.

The Analysed column shows the number of residues for which the backbone conformation was analysed, and the total number of residues.

Mol	Chain	Analysed	Favoured	Allowed	Outliers	Percentiles	
1	A	358/395 (91%)	348 (97%)	10 (3%)	0	100	100

There are no Ramachandran outliers to report.

5.3.2 Protein sidechains [i](#)

In the following table, the Percentiles column shows the percent sidechain outliers of the chain as a percentile score with respect to all X-ray entries followed by that with respect to entries of similar resolution.

The Analysed column shows the number of residues for which the sidechain conformation was analysed, and the total number of residues.

Mol	Chain	Analysed	Rotameric	Outliers	Percentiles	
1	A	293/322 (91%)	290 (99%)	3 (1%)	76	74

All (3) residues with a non-rotameric sidechain are listed below:

Mol	Chain	Res	Type
1	A	91	PRO
1	A	212	ASN
1	A	356	TYR

Some sidechains can be flipped to improve hydrogen bonding and reduce clashes. All (3) such sidechains are listed below:

Mol	Chain	Res	Type
1	A	47	GLN
1	A	74	GLN
1	A	212	ASN

5.3.3 RNA ⓘ

There are no RNA molecules in this entry.

5.4 Non-standard residues in protein, DNA, RNA chains ⓘ

There are no non-standard protein/DNA/RNA residues in this entry.

5.5 Carbohydrates ⓘ

There are no carbohydrates in this entry.

5.6 Ligand geometry ⓘ

9 ligands are modelled in this entry.

In the following table, the Counts columns list the number of bonds (or angles) for which Mogul statistics could be retrieved, the number of bonds (or angles) that are observed in the model and the number of bonds (or angles) that are defined in the Chemical Component Dictionary. The Link column lists molecule types, if any, to which the group is linked. The Z score for a bond length (or angle) is the number of standard deviations the observed value is removed from the expected value. A bond length (or angle) with $|Z| > 2$ is considered an outlier worth inspection. RMSZ is the root-mean-square of all Z scores of the bond lengths (or angles).

Mol	Type	Chain	Res	Link	Bond lengths			Bond angles		
					Counts	RMSZ	$\# Z > 2$	Counts	RMSZ	$\# Z > 2$
5	ORO	A	699	-	6,11,11	2.51	2 (33%)	3,15,15	4.70	2 (66%)
3	ACT	A	603	-	1,3,3	3.86	1 (100%)	0,3,3	0.00	-
4	FMN	A	698	-	31,33,33	2.51	7 (22%)	40,50,50	2.61	10 (25%)
2	SO4	A	605	-	4,4,4	0.24	0	6,6,6	0.06	0
6	ILH	A	600[A]	-	30,34,34	2.32	14 (46%)	43,51,51	1.51	6 (13%)
3	ACT	A	601	-	1,3,3	3.24	1 (100%)	0,3,3	0.00	-
6	ILH	A	600[B]	-	30,34,34	2.29	14 (46%)	43,51,51	1.40	6 (13%)
2	SO4	A	604	-	4,4,4	0.26	0	6,6,6	0.06	0
3	ACT	A	602	-	1,3,3	2.82	1 (100%)	0,3,3	0.00	-

In the following table, the Chirals column lists the number of chiral outliers, the number of chiral centers analysed, the number of these observed in the model and the number defined in the Chemical Component Dictionary. Similar counts are reported in the Torsion and Rings columns. '-' means no outliers of that kind were identified.

Mol	Type	Chain	Res	Link	Chirals	Torsions	Rings
5	ORO	A	699	-	-	0/0/4/4	0/1/1/1
4	FMN	A	698	-	-	5/18/18/18	0/3/3/3
6	ILH	A	600[A]	-	-	4/17/31/31	0/3/3/3
6	ILH	A	600[B]	-	-	2/17/31/31	0/3/3/3

All (40) bond length outliers are listed below:

Mol	Chain	Res	Type	Atoms	Z	Observed(Å)	Ideal(Å)
4	A	698	FMN	C4A-C10	11.17	1.50	1.38
6	A	600[A]	ILH	C11-C12	4.13	1.46	1.39
6	A	600[B]	ILH	C11-C12	4.12	1.46	1.39
5	A	699	ORO	C4-N3	3.96	1.39	1.33
6	A	600[A]	ILH	C11-C10	3.92	1.45	1.39
6	A	600[B]	ILH	C11-C10	3.90	1.45	1.39
3	A	603	ACT	CH3-C	3.86	1.53	1.48
5	A	699	ORO	C6-N1	3.86	1.40	1.34
6	A	600[B]	ILH	C13-C12	3.48	1.43	1.37
6	A	600[B]	ILH	C8-C9	3.38	1.44	1.39
6	A	600[A]	ILH	C10-C9	3.31	1.43	1.37
6	A	600[A]	ILH	C15-C16	3.28	1.44	1.38
6	A	600[A]	ILH	C7-N1	3.25	1.42	1.35
6	A	600[B]	ILH	C15-C16	3.25	1.44	1.38
3	A	601	ACT	CH3-C	3.24	1.52	1.48
4	A	698	FMN	C9A-N10	3.23	1.42	1.38
6	A	600[B]	ILH	C8-C13	3.20	1.44	1.39
6	A	600[B]	ILH	C10-C9	3.17	1.43	1.37
6	A	600[A]	ILH	C8-C13	3.15	1.44	1.39
4	A	698	FMN	C2-N3	3.06	1.44	1.38
6	A	600[A]	ILH	C13-C12	3.06	1.43	1.37
6	A	600[A]	ILH	C8-C9	3.01	1.44	1.39
4	A	698	FMN	C4-C4A	2.96	1.46	1.41
4	A	698	FMN	C6-C5A	2.90	1.46	1.41
6	A	600[A]	ILH	C20-C14	2.89	1.45	1.39
6	A	600[A]	ILH	C18-C16	2.84	1.44	1.38
6	A	600[B]	ILH	C11-C14	-2.83	1.44	1.50
6	A	600[B]	ILH	C20-C14	2.83	1.45	1.39
6	A	600[B]	ILH	C18-C16	2.83	1.44	1.38
3	A	602	ACT	CH3-C	2.82	1.52	1.48
6	A	600[A]	ILH	C4-C5	2.80	1.51	1.36
6	A	600[B]	ILH	C4-C5	2.79	1.51	1.36
6	A	600[B]	ILH	O4-C17	2.73	1.47	1.31
6	A	600[A]	ILH	C11-C14	-2.70	1.45	1.50
6	A	600[A]	ILH	O4-C17	2.66	1.46	1.31

Continued on next page...

Continued from previous page...

Mol	Chain	Res	Type	Atoms	Z	Observed(Å)	Ideal(Å)
6	A	600[B]	ILH	C15-C14	2.60	1.44	1.39
6	A	600[A]	ILH	C15-C14	2.56	1.44	1.39
4	A	698	FMN	C4-N3	2.50	1.37	1.33
4	A	698	FMN	C8-C7	2.45	1.47	1.40
6	A	600[B]	ILH	C7-N1	2.40	1.40	1.35

All (24) bond angle outliers are listed below:

Mol	Chain	Res	Type	Atoms	Z	Observed(°)	Ideal(°)
4	A	698	FMN	C4-N3-C2	11.16	124.57	115.14
5	A	699	ORO	C5-C4-N3	-7.55	115.27	124.08
4	A	698	FMN	C4-C4A-C10	-7.05	115.29	119.95
6	A	600[A]	ILH	C3-C7-N1	4.48	122.11	115.48
4	A	698	FMN	C4A-C4-N3	-4.10	117.83	123.43
6	A	600[A]	ILH	C4-C3-C2	4.08	111.22	108.41
4	A	698	FMN	C4A-C10-N10	-4.04	116.15	120.30
6	A	600[A]	ILH	C6-C2-C3	3.58	111.00	108.49
6	A	600[B]	ILH	C4-C3-C2	3.49	110.81	108.41
6	A	600[B]	ILH	C6-C2-C3	3.41	110.88	108.49
6	A	600[B]	ILH	C8-N1-C7	3.15	134.41	124.11
4	A	698	FMN	C4-C4A-N5	3.03	122.06	118.60
6	A	600[A]	ILH	C6-C5-C4	-3.02	105.43	110.50
6	A	600[B]	ILH	C7-C3-C2	2.95	130.43	125.57
4	A	698	FMN	C4A-N5-C5A	2.82	119.59	116.77
6	A	600[B]	ILH	C6-C5-C4	-2.81	105.78	110.50
6	A	600[B]	ILH	C3-C7-N1	2.80	119.62	115.48
6	A	600[A]	ILH	C7-C3-C2	2.78	130.13	125.57
5	A	699	ORO	C4-C5-C6	2.72	118.49	116.73
4	A	698	FMN	C6-C5A-N5	2.58	121.89	119.05
4	A	698	FMN	P-O5'-C5'	2.51	125.20	118.30
4	A	698	FMN	C6-C5A-C9A	-2.12	116.27	119.05
6	A	600[A]	ILH	O3-C7-N1	-2.10	119.45	123.92
4	A	698	FMN	C10-C4A-N5	2.01	122.65	121.26

There are no chirality outliers.

All (11) torsion outliers are listed below:

Mol	Chain	Res	Type	Atoms
4	A	698	FMN	O3'-C3'-C4'-C5'
4	A	698	FMN	C2'-C3'-C4'-O4'
4	A	698	FMN	C2'-C3'-C4'-C5'
4	A	698	FMN	O3'-C3'-C4'-O4'

Continued on next page...

Continued from previous page...

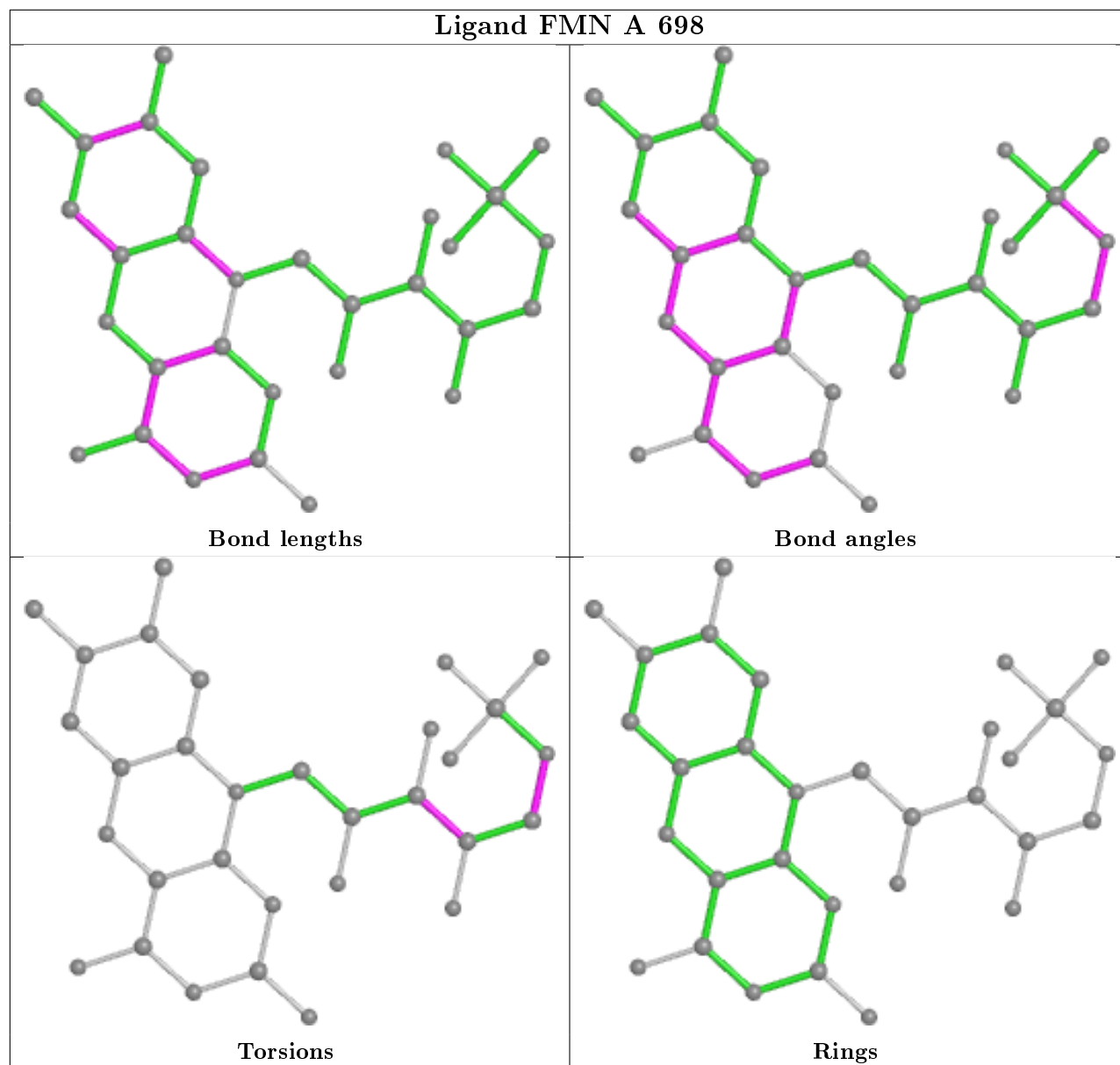
Mol	Chain	Res	Type	Atoms
6	A	600[A]	ILH	C4-C3-C7-O3
6	A	600[A]	ILH	C4-C3-C7-N1
6	A	600[A]	ILH	C2-C3-C7-O3
6	A	600[B]	ILH	C2-C3-C7-N1
4	A	698	FMN	C4'-C5'-O5'-P
6	A	600[B]	ILH	C2-C3-C7-O3
6	A	600[A]	ILH	C2-C3-C7-N1

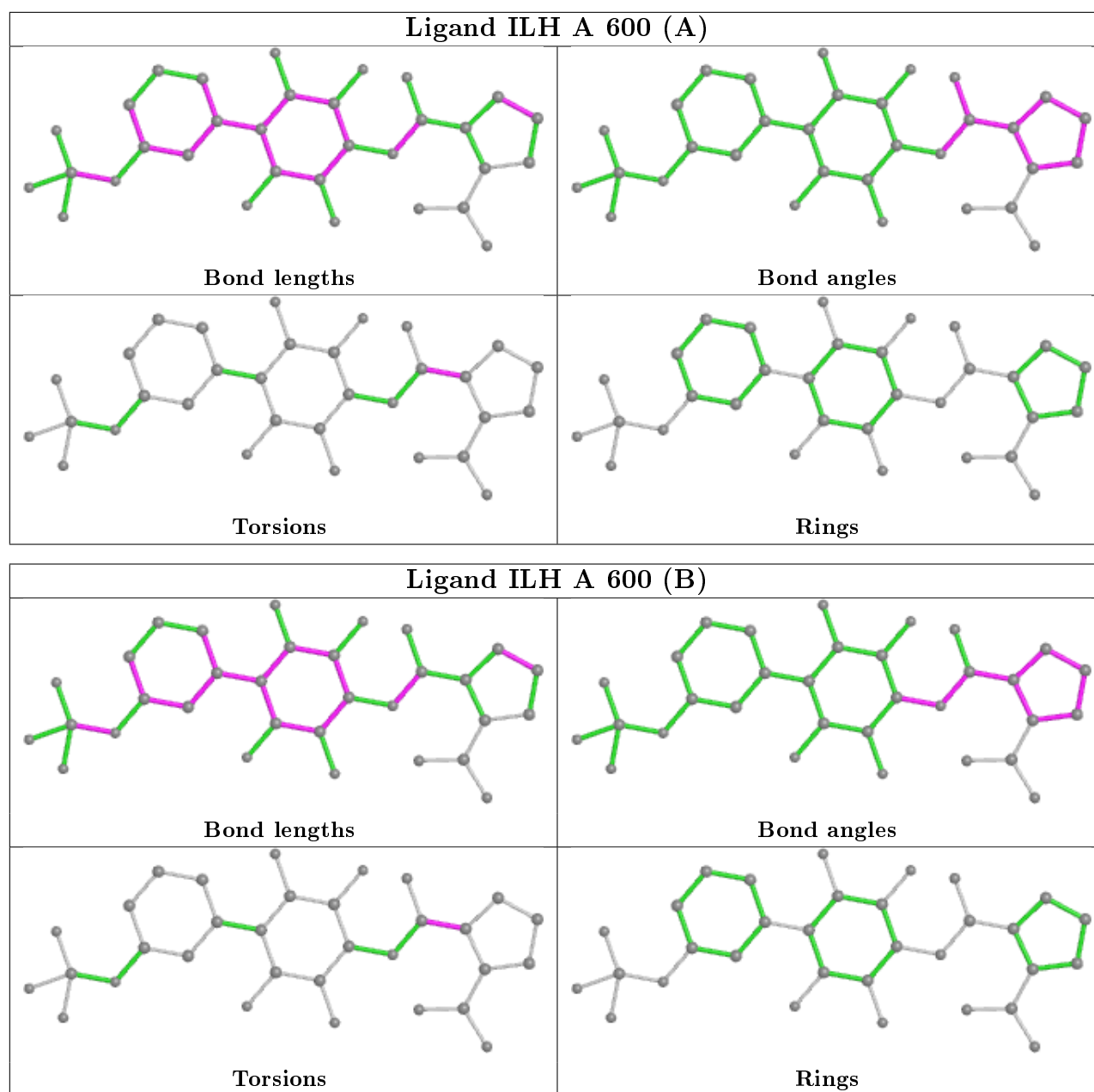
There are no ring outliers.

3 monomers are involved in 7 short contacts:

Mol	Chain	Res	Type	Clashes	Symm-Clashes
6	A	600[A]	ILH	2	0
6	A	600[B]	ILH	2	0
3	A	602	ACT	3	0

The following is a two-dimensional graphical depiction of Mogul quality analysis of bond lengths, bond angles, torsion angles, and ring geometry for all instances of the Ligand of Interest. In addition, ligands with molecular weight > 250 and outliers as shown on the validation Tables will also be included. For torsion angles, if less than 5% of the Mogul distribution of torsion angles is within 10 degrees of the torsion angle in question, then that torsion angle is considered an outlier. Any bond that is central to one or more torsion angles identified as an outlier by Mogul will be highlighted in the graph. For rings, the root-mean-square deviation (RMSD) between the ring in question and similar rings identified by Mogul is calculated over all ring torsion angles. If the average RMSD is greater than 60 degrees and the minimal RMSD between the ring in question and any Mogul-identified rings is also greater than 60 degrees, then that ring is considered an outlier. The outliers are highlighted in purple. The color gray indicates Mogul did not find sufficient equivalents in the CSD to analyse the geometry.





5.7 Other polymers [i](#)

There are no such residues in this entry.

5.8 Polymer linkage issues [i](#)

There are no chain breaks in this entry.

6 Fit of model and data ⓘ

6.1 Protein, DNA and RNA chains ⓘ

EDS was not executed - this section is therefore empty.

6.2 Non-standard residues in protein, DNA, RNA chains ⓘ

EDS was not executed - this section is therefore empty.

6.3 Carbohydrates ⓘ

EDS was not executed - this section is therefore empty.

6.4 Ligands ⓘ

EDS was not executed - this section is therefore empty.

6.5 Other polymers ⓘ

EDS was not executed - this section is therefore empty.