



Full wwPDB X-ray Structure Validation Report ⓘ

Aug 9, 2020 – 10:25 AM BST

PDB ID : 4FQP
Title : Crystal structure of human Nectin-like 5 full ectodomain (D1-D3)
Authors : Harrison, O.J.; Jin, X.; Brasch, J.; Shapiro, L.
Deposited on : 2012-06-25
Resolution : 3.60 Å(reported)

This is a Full wwPDB X-ray Structure Validation Report for a publicly released PDB entry.

We welcome your comments at validation@mail.wwpdb.org

A user guide is available at

<https://www.wwpdb.org/validation/2017/XrayValidationReportHelp>

with specific help available everywhere you see the ⓘ symbol.

The following versions of software and data (see [references ⓘ](#)) were used in the production of this report:

MolProbity : 4.02b-467
Mogul : 1.8.5 (274361), CSD as541be (2020)
Xtriage (Phenix) : 1.13
EDS : 2.13.1
Percentile statistics : 20191225.v01 (using entries in the PDB archive December 25th 2019)
Refmac : 5.8.0158
CCP4 : 7.0.044 (Gargrove)
Ideal geometry (proteins) : Engh & Huber (2001)
Ideal geometry (DNA, RNA) : Parkinson et al. (1996)
Validation Pipeline (wwPDB-VP) : 2.13.1

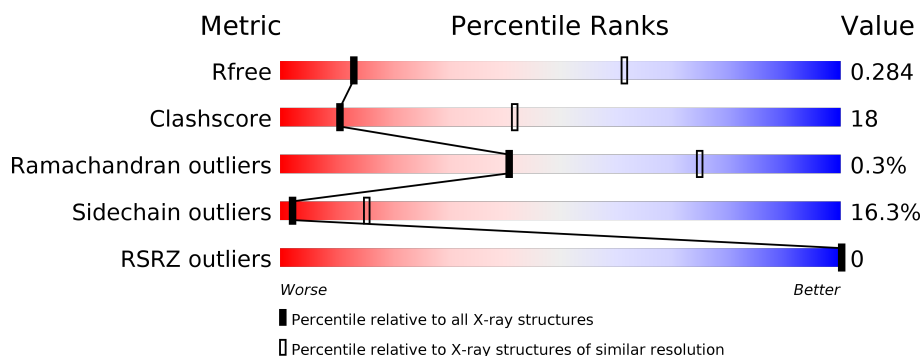
1 Overall quality at a glance

The following experimental techniques were used to determine the structure:

X-RAY DIFFRACTION

The reported resolution of this entry is 3.60 Å.

Percentile scores (ranging between 0-100) for global validation metrics of the entry are shown in the following graphic. The table shows the number of entries on which the scores are based.



Metric	Whole archive (#Entries)	Similar resolution (#Entries, resolution range(Å))
R_{free}	130704	1257 (3.70-3.50)
Clashscore	141614	1353 (3.70-3.50)
Ramachandran outliers	138981	1307 (3.70-3.50)
Sidechain outliers	138945	1307 (3.70-3.50)
RSRZ outliers	127900	1161 (3.70-3.50)

The table below summarises the geometric issues observed across the polymeric chains and their fit to the electron density. The red, orange, yellow and green segments on the lower bar indicate the fraction of residues that contain outliers for ≥ 3 , 2, 1 and 0 types of geometric quality criteria respectively. A grey segment represents the fraction of residues that are not modelled. The numeric value for each fraction is indicated below the corresponding segment, with a dot representing fractions $\leq 5\%$. The upper red bar (where present) indicates the fraction of residues that have poor fit to the electron density. The numeric value is given above the bar.

Mol	Chain	Length	Quality of chain
1	A	313	
2	B	3	
2	F	3	
3	C	5	
4	D	2	
4	E	2	

Continued on next page...

Continued from previous page...

Mol	Chain	Length	Quality of chain
5	G	4	

The following table lists non-polymeric compounds, carbohydrate monomers and non-standard residues in protein, DNA, RNA chains that are outliers for geometric or electron-density-fit criteria:

Mol	Type	Chain	Res	Chirality	Geometry	Clashes	Electron density
2	BMA	B	3	-	-	-	X
2	BMA	F	3	-	-	-	X
4	NAG	D	2	-	-	-	X
5	NAG	G	1	-	-	X	-
5	BMA	G	3	-	-	-	X
5	FUC	G	4	-	-	-	X

2 Entry composition [i](#)

There are 6 unique types of molecules in this entry. The entry contains 2599 atoms, of which 0 are hydrogens and 0 are deuteriums.

In the tables below, the ZeroOcc column contains the number of atoms modelled with zero occupancy, the AltConf column contains the number of residues with at least one atom in alternate conformation and the Trace column contains the number of residues modelled with at most 2 atoms.

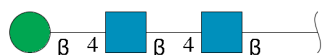
- Molecule 1 is a protein called Poliovirus receptor.

Mol	Chain	Residues	Atoms					ZeroOcc	AltConf	Trace
1	A	306	Total	C	N	O	S	0	0	0
			2342	1478	403	449	12			

There are 6 discrepancies between the modelled and reference sequences:

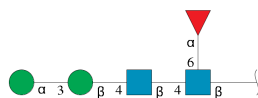
Chain	Residue	Modelled	Actual	Comment	Reference
A	335	HIS	-	expression tag	UNP P15151
A	336	HIS	-	expression tag	UNP P15151
A	337	HIS	-	expression tag	UNP P15151
A	338	HIS	-	expression tag	UNP P15151
A	339	HIS	-	expression tag	UNP P15151
A	340	HIS	-	expression tag	UNP P15151

- Molecule 2 is an oligosaccharide called beta-D-mannopyranose-(1-4)-2-acetamido-2-deoxy-beta-D-glucopyranose-(1-4)-2-acetamido-2-deoxy-beta-D-glucopyranose.



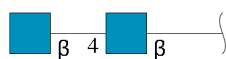
Mol	Chain	Residues	Atoms				ZeroOcc	AltConf	Trace
2	B	3	Total	C	N	O	0	0	0
			39	22	2	15			
2	F	3	Total	C	N	O	0	0	0
			39	22	2	15			

- Molecule 3 is an oligosaccharide called alpha-D-mannopyranose-(1-3)-beta-D-mannopyranose-(1-4)-2-acetamido-2-deoxy-beta-D-glucopyranose-(1-4)-[alpha-L-fucopyranose-(1-6)]2-acetamido-2-deoxy-beta-D-glucopyranose.



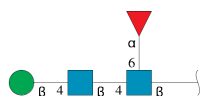
Mol	Chain	Residues	Atoms				ZeroOcc	AltConf	Trace
3	C	5	Total	C	N	O	0	0	0
			60	34	2	24			

- Molecule 4 is an oligosaccharide called 2-acetamido-2-deoxy-beta-D-glucopyranose-(1-4)-2-acetamido-2-deoxy-beta-D-glucopyranose.



Mol	Chain	Residues	Atoms				ZeroOcc	AltConf	Trace
4	D	2	Total	C	N	O	0	0	0
			28	16	2	10			
4	E	2	Total	C	N	O	0	0	0
			28	16	2	10			

- Molecule 5 is an oligosaccharide called beta-D-mannopyranose-(1-4)-2-acetamido-2-deoxy-beta-D-glucopyranose-(1-4)-[alpha-L-fucopyranose-(1-6)]2-acetamido-2-deoxy-beta-D-glucopyranose.



Mol	Chain	Residues	Atoms				ZeroOcc	AltConf	Trace
5	G	4	Total	C	N	O	0	0	0
			49	28	2	19			

- Molecule 6 is 2-acetamido-2-deoxy-beta-D-glucopyranose (three-letter code: NAG) (formula: C₈H₁₅NO₆).

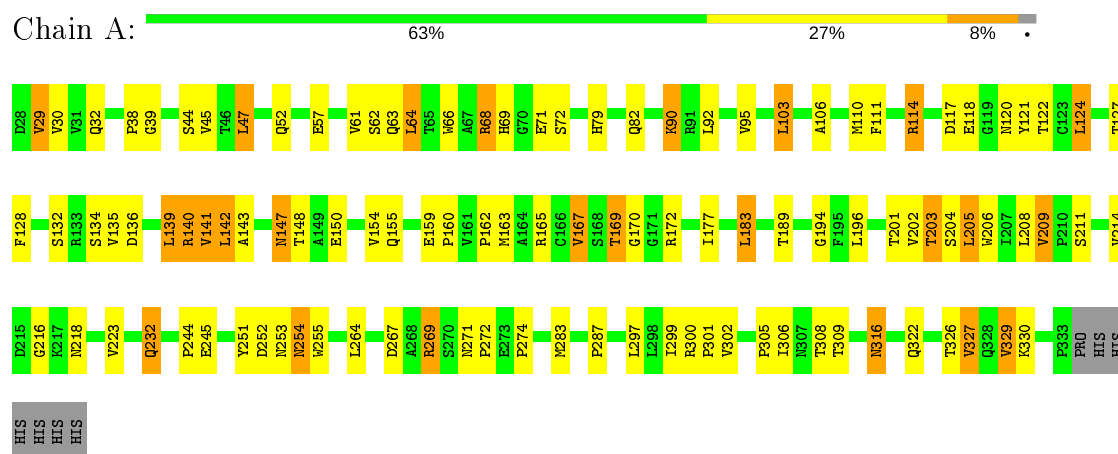


Mol	Chain	Residues	Atoms				ZeroOcc	AltConf
			Total	C	N	O		
6	A	1	14	8	1	5	0	0

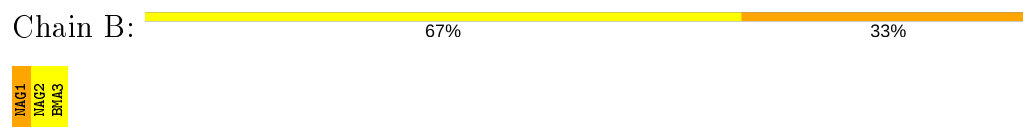
3 Residue-property plots

These plots are drawn for all protein, RNA, DNA and oligosaccharide chains in the entry. The first graphic for a chain summarises the proportions of the various outlier classes displayed in the second graphic. The second graphic shows the sequence view annotated by issues in geometry and electron density. Residues are color-coded according to the number of geometric quality criteria for which they contain at least one outlier: green = 0, yellow = 1, orange = 2 and red = 3 or more. A red dot above a residue indicates a poor fit to the electron density ($RSRZ > 2$). Stretches of 2 or more consecutive residues without any outlier are shown as a green connector. Residues present in the sample, but not in the model, are shown in grey.

• Molecule 1: Poliovirus receptor



• Molecule 2: beta-D-mannopyranose-(1-4)-2-acetamido-2-deoxy-beta-D-glucopyranose-(1-4)-2-acetamido-2-deoxy-beta-D-glucopyranose



• Molecule 2: beta-D-mannopyranose-(1-4)-2-acetamido-2-deoxy-beta-D-glucopyranose-(1-4)-2-acetamido-2-deoxy-beta-D-glucopyranose



• Molecule 3: alpha-D-mannopyranose-(1-3)-beta-D-mannopyranose-(1-4)-2-acetamido-2-deoxy-beta-D-glucopyranose-(1-4)-[alpha-L-fucopyranose-(1-6)]2-acetamido-2-deoxy-beta-D-glucopyranose





- Molecule 4: 2-acetamido-2-deoxy-beta-D-glucopyranose-(1-4)-2-acetamido-2-deoxy-beta-D-glucopyranose

Chain D:  100%




- Molecule 4: 2-acetamido-2-deoxy-beta-D-glucopyranose-(1-4)-2-acetamido-2-deoxy-beta-D-glucopyranose

Chain E:  50% 50%



- Molecule 5: beta-D-mannopyranose-(1-4)-2-acetamido-2-deoxy-beta-D-glucopyranose-(1-4)-[alpha-L-fucopyranose-(1-6)]2-acetamido-2-deoxy-beta-D-glucopyranose

Chain G:  25% 25% 50%



4 Data and refinement statistics

Property	Value	Source
Space group	P 65 2 2	Depositor
Cell constants a, b, c, α , β , γ	138.92Å 138.92Å 273.64Å 90.00° 90.00° 120.00°	Depositor
Resolution (Å)	20.00 – 3.60 29.99 – 3.56	Depositor EDS
% Data completeness (in resolution range)	98.8 (20.00-3.60) 99.1 (29.99-3.56)	Depositor EDS
R_{merge}	(Not available)	Depositor
R_{sym}	0.11	Depositor
$\langle I/\sigma(I) \rangle$ ¹	1.88 (at 3.56Å)	Xtriage
Refinement program	REFMAC 5.6.0117	Depositor
R, R_{free}	0.248 , 0.272 0.251 , 0.284	Depositor DCC
R_{free} test set	984 reflections (5.14%)	wwPDB-VP
Wilson B-factor (Å ²)	102.3	Xtriage
Anisotropy	0.558	Xtriage
Bulk solvent k_{sol} (e/Å ³), B_{sol} (Å ²)	0.28 , 53.1	EDS
L-test for twinning ²	$\langle L \rangle = 0.54$, $\langle L^2 \rangle = 0.38$	Xtriage
Estimated twinning fraction	No twinning to report.	Xtriage
F_o, F_c correlation	0.91	EDS
Total number of atoms	2599	wwPDB-VP
Average B, all atoms (Å ²)	116.0	wwPDB-VP

Xtriage's analysis on translational NCS is as follows: *The largest off-origin peak in the Patterson function is 3.32% of the height of the origin peak. No significant pseudotranslation is detected.*

¹Intensities estimated from amplitudes.

²Theoretical values of $\langle |L| \rangle$, $\langle L^2 \rangle$ for acentric reflections are 0.5, 0.333 respectively for untwinned datasets, and 0.375, 0.2 for perfectly twinned datasets.

5 Model quality

5.1 Standard geometry

Bond lengths and bond angles in the following residue types are not validated in this section: FUC, BMA, NAG, MAN

The Z score for a bond length (or angle) is the number of standard deviations the observed value is removed from the expected value. A bond length (or angle) with $|Z| > 5$ is considered an outlier worth inspection. RMSZ is the root-mean-square of all Z scores of the bond lengths (or angles).

Mol	Chain	Bond lengths		Bond angles	
		RMSZ	$\# Z > 5$	RMSZ	$\# Z > 5$
1	A	0.65	0/2400	0.57	0/3286

There are no bond length outliers.

There are no bond angle outliers.

There are no chirality outliers.

There are no planarity outliers.

5.2 Too-close contacts

In the following table, the Non-H and H(model) columns list the number of non-hydrogen atoms and hydrogen atoms in the chain respectively. The H(added) column lists the number of hydrogen atoms added and optimized by MolProbity. The Clashes column lists the number of clashes within the asymmetric unit, whereas Symm-Clashes lists symmetry related clashes.

Mol	Chain	Non-H	H(model)	H(added)	Clashes	Symm-Clashes
1	A	2342	0	2294	86	0
2	B	39	0	34	1	0
2	F	39	0	34	2	0
3	C	60	0	52	2	0
4	D	28	0	25	0	0
4	E	28	0	25	3	0
5	G	49	0	43	8	0
6	A	14	0	13	1	0
All	All	2599	0	2520	94	0

The all-atom clashscore is defined as the number of clashes found per 1000 atoms (including hydrogen atoms). The all-atom clashscore for this structure is 18.

All (94) close contacts within the same asymmetric unit are listed below, sorted by their clash

magnitude.

Atom-1	Atom-2	Interatomic distance (Å)	Clash overlap (Å)
1:A:283:MET:CE	1:A:308:THR:HG22	1.82	1.09
1:A:140:ARG:HH11	1:A:140:ARG:HG3	1.21	1.04
3:C:1:NAG:H4	3:C:5:FUC:H5	1.39	1.00
1:A:283:MET:HE2	1:A:308:THR:HG22	1.48	0.94
1:A:183:LEU:HD12	1:A:183:LEU:H	1.33	0.92
1:A:68:ARG:HB3	1:A:71:GLU:HG3	1.52	0.91
1:A:147:ASN:ND2	1:A:223:VAL:HG11	1.88	0.86
1:A:162:PRO:HB3	1:A:205:LEU:HD12	1.60	0.81
1:A:305:PRO:HB2	5:G:1:NAG:H82	1.63	0.80
1:A:216:GLY:O	2:F:1:NAG:H82	1.81	0.79
1:A:170:GLY:H	1:A:201:THR:HG22	1.49	0.78
1:A:140:ARG:HG3	1:A:140:ARG:NH1	1.95	0.77
1:A:68:ARG:CB	1:A:71:GLU:HG3	2.18	0.74
1:A:90:LYS:H	1:A:90:LYS:HD2	1.55	0.72
1:A:183:LEU:HD12	1:A:183:LEU:N	2.06	0.71
1:A:68:ARG:HB3	1:A:71:GLU:CG	2.21	0.70
5:G:1:NAG:H62	5:G:2:NAG:C1	2.22	0.69
1:A:61:VAL:HG11	1:A:103:LEU:O	1.94	0.68
1:A:124:LEU:CB	1:A:134:SER:HB3	2.25	0.67
1:A:167:VAL:HB	1:A:203:THR:HG23	1.79	0.65
5:G:1:NAG:H61	5:G:4:FUC:O2	1.97	0.65
1:A:44:SER:HB3	1:A:111:PHE:HA	1.78	0.65
1:A:169:THR:HA	1:A:201:THR:HB	1.79	0.65
1:A:218:ASN:ND2	4:E:1:NAG:O7	2.29	0.65
5:G:1:NAG:C6	5:G:2:NAG:C1	2.75	0.64
1:A:124:LEU:HB3	1:A:134:SER:HB3	1.78	0.64
5:G:1:NAG:C6	5:G:4:FUC:O2	2.46	0.63
1:A:189:THR:HG23	1:A:204:SER:HB2	1.80	0.62
1:A:92:LEU:HD23	1:A:110:MET:HB3	1.81	0.62
1:A:39:GLY:H	1:A:45:VAL:HG11	1.65	0.62
1:A:251:TYR:CE1	1:A:327:VAL:HG23	2.35	0.61
1:A:322:GLN:HE22	6:A:420:NAG:H82	1.66	0.61
1:A:142:LEU:HA	1:A:172:ARG:HG3	1.82	0.60
1:A:283:MET:CE	1:A:308:THR:CG2	2.71	0.60
1:A:154:VAL:HG21	1:A:163:MET:HG2	1.85	0.59
1:A:147:ASN:OD1	1:A:232:GLN:NE2	2.30	0.59
1:A:118:GLU:HB2	1:A:141:VAL:CG1	2.32	0.59
1:A:306:ILE:H	1:A:329:VAL:HG23	1.69	0.57
1:A:274:PRO:HA	1:A:316:ASN:HB2	1.87	0.57
1:A:120:ASN:ND2	3:C:5:FUC:H61	2.19	0.57
1:A:170:GLY:N	1:A:201:THR:HG22	2.20	0.56

Continued on next page...

Continued from previous page...

Atom-1	Atom-2	Interatomic distance (Å)	Clash overlap (Å)
1:A:114:ARG:NH1	1:A:117:ASP:OD1	2.39	0.56
1:A:283:MET:HE1	1:A:308:THR:HG22	1.84	0.56
1:A:216:GLY:O	2:F:1:NAG:C8	2.54	0.56
1:A:309:THR:OG1	1:A:326:THR:HG22	2.07	0.55
1:A:140:ARG:CG	1:A:140:ARG:NH1	2.69	0.54
1:A:63:GLN:HB3	1:A:79:HIS:HD2	1.72	0.54
5:G:1:NAG:H62	5:G:2:NAG:HN2	1.72	0.53
1:A:142:LEU:HA	1:A:172:ARG:CG	2.38	0.53
1:A:90:LYS:CD	1:A:90:LYS:H	2.22	0.53
1:A:218:ASN:ND2	4:E:1:NAG:C7	2.72	0.53
1:A:39:GLY:N	1:A:45:VAL:HG11	2.24	0.52
1:A:64:LEU:CD1	1:A:106:ALA:HA	2.39	0.52
1:A:154:VAL:HG12	1:A:155:GLN:O	2.09	0.52
1:A:32:GLN:HG2	1:A:52:GLN:HE21	1.75	0.52
1:A:124:LEU:HB3	1:A:134:SER:CB	2.40	0.51
1:A:211:SER:O	1:A:214:VAL:HG22	2.11	0.50
1:A:64:LEU:HD12	1:A:106:ALA:CB	2.42	0.50
1:A:287:PRO:HG2	1:A:308:THR:HG21	1.94	0.50
1:A:135:VAL:HG22	1:A:136:ASP:N	2.27	0.50
1:A:143:ALA:HB3	1:A:172:ARG:HB3	1.95	0.49
1:A:252:ASP:O	1:A:254:ASN:N	2.46	0.48
1:A:287:PRO:CG	1:A:308:THR:HG21	2.42	0.48
1:A:124:LEU:HB2	1:A:134:SER:HB3	1.92	0.48
1:A:95:VAL:CG1	2:B:1:NAG:H62	2.43	0.48
1:A:244:PRO:HG3	1:A:316:ASN:HB3	1.95	0.48
1:A:39:GLY:HA3	1:A:140:ARG:O	2.13	0.48
1:A:30:VAL:HG13	1:A:52:GLN:HB2	1.95	0.48
1:A:218:ASN:HD22	4:E:1:NAG:C7	2.24	0.47
1:A:114:ARG:O	1:A:117:ASP:HB2	2.15	0.47
1:A:300:ARG:HB3	1:A:301:PRO:HD2	1.97	0.46
1:A:29:VAL:CG1	1:A:29:VAL:O	2.64	0.46
5:G:1:NAG:H62	5:G:2:NAG:N2	2.31	0.46
1:A:254:ASN:OD1	1:A:254:ASN:N	2.48	0.46
1:A:245:GLU:OE1	1:A:269:ARG:NH1	2.48	0.45
1:A:255:TRP:CZ3	1:A:299:ILE:HG21	2.51	0.45
1:A:63:GLN:HB3	1:A:79:HIS:CD2	2.50	0.45
1:A:205:LEU:N	1:A:205:LEU:HD23	2.32	0.45
1:A:64:LEU:N	1:A:64:LEU:HD23	2.32	0.45
1:A:163:MET:HB3	1:A:163:MET:HE2	1.77	0.45
5:G:1:NAG:H61	5:G:4:FUC:H3	1.98	0.45
1:A:38:PRO:HA	1:A:140:ARG:O	2.18	0.43

Continued on next page...

Continued from previous page...

Atom-1	Atom-2	Interatomic distance (Å)	Clash overlap (Å)
1:A:47:LEU:HB3	1:A:66:TRP:CH2	2.54	0.43
1:A:194:GLY:HA2	1:A:201:THR:HG23	2.00	0.43
1:A:206:TRP:CH2	1:A:208:LEU:HD22	2.55	0.42
1:A:271:ASN:HA	1:A:272:PRO:HA	1.86	0.42
1:A:61:VAL:HA	1:A:127:THR:HA	2.00	0.42
1:A:128:PHE:C	1:A:128:PHE:CD1	2.93	0.41
1:A:160:PRO:HG3	1:A:209:VAL:HG22	2.01	0.41
1:A:68:ARG:HG2	1:A:121:TYR:CE2	2.55	0.41
1:A:118:GLU:HG3	1:A:139:LEU:O	2.20	0.41
1:A:177:ILE:HG21	1:A:204:SER:HB3	2.02	0.41
1:A:142:LEU:HB2	1:A:172:ARG:O	2.21	0.40
1:A:283:MET:HE1	1:A:308:THR:CG2	2.48	0.40

There are no symmetry-related clashes.

5.3 Torsion angles [i](#)

5.3.1 Protein backbone [i](#)

In the following table, the Percentiles column shows the percent Ramachandran outliers of the chain as a percentile score with respect to all X-ray entries followed by that with respect to entries of similar resolution.

The Analysed column shows the number of residues for which the backbone conformation was analysed, and the total number of residues.

Mol	Chain	Analysed	Favoured	Allowed	Outliers	Percentiles
1	A	304/313 (97%)	284 (93%)	19 (6%)	1 (0%)	41 75

All (1) Ramachandran outliers are listed below:

Mol	Chain	Res	Type
1	A	253	ASN

5.3.2 Protein sidechains [i](#)

In the following table, the Percentiles column shows the percent sidechain outliers of the chain as a percentile score with respect to all X-ray entries followed by that with respect to entries of similar resolution.

The Analysed column shows the number of residues for which the sidechain conformation was

analysed, and the total number of residues.

Mol	Chain	Analysed	Rotameric	Outliers	Percentiles
1	A	263/270 (97%)	220 (84%)	43 (16%)	2 15

All (43) residues with a non-rotameric sidechain are listed below:

Mol	Chain	Res	Type
1	A	29	VAL
1	A	47	LEU
1	A	57	GLU
1	A	62	SER
1	A	64	LEU
1	A	68	ARG
1	A	69	HIS
1	A	72	SER
1	A	82	GLN
1	A	90	LYS
1	A	103	LEU
1	A	114	ARG
1	A	122	THR
1	A	124	LEU
1	A	132	SER
1	A	139	LEU
1	A	140	ARG
1	A	141	VAL
1	A	142	LEU
1	A	147	ASN
1	A	148	THR
1	A	150	GLU
1	A	159	GLU
1	A	165	ARG
1	A	167	VAL
1	A	169	THR
1	A	183	LEU
1	A	196	LEU
1	A	202	VAL
1	A	203	THR
1	A	205	LEU
1	A	209	VAL
1	A	232	GLN
1	A	254	ASN
1	A	264	LEU
1	A	267	ASP

Continued on next page...

Continued from previous page...

Mol	Chain	Res	Type
1	A	269	ARG
1	A	297	LEU
1	A	302	VAL
1	A	316	ASN
1	A	327	VAL
1	A	329	VAL
1	A	330	LYS

Some sidechains can be flipped to improve hydrogen bonding and reduce clashes. All (3) such sidechains are listed below:

Mol	Chain	Res	Type
1	A	52	GLN
1	A	180	HIS
1	A	322	GLN

5.3.3 RNA ⓘ

There are no RNA molecules in this entry.

5.4 Non-standard residues in protein, DNA, RNA chains ⓘ

There are no non-standard protein/DNA/RNA residues in this entry.

5.5 Carbohydrates ⓘ

19 monosaccharides are modelled in this entry.

In the following table, the Counts columns list the number of bonds (or angles) for which Mogul statistics could be retrieved, the number of bonds (or angles) that are observed in the model and the number of bonds (or angles) that are defined in the Chemical Component Dictionary. The Link column lists molecule types, if any, to which the group is linked. The Z score for a bond length (or angle) is the number of standard deviations the observed value is removed from the expected value. A bond length (or angle) with $|Z| > 2$ is considered an outlier worth inspection. RMSZ is the root-mean-square of all Z scores of the bond lengths (or angles).

Mol	Type	Chain	Res	Link	Bond lengths			Bond angles		
					Counts	RMSZ	# Z > 2	Counts	RMSZ	# Z > 2
2	NAG	B	1	1,2	14,14,15	0.98	1 (7%)	17,19,21	0.98	1 (5%)
2	NAG	B	2	2	14,14,15	0.55	0	17,19,21	0.97	1 (5%)
2	BMA	B	3	2	11,11,12	0.65	0	15,15,17	1.15	1 (6%)

Mol	Type	Chain	Res	Link	Bond lengths			Bond angles		
					Counts	RMSZ	# Z > 2	Counts	RMSZ	# Z > 2
3	NAG	C	1	1,3	14,14,15	1.04	0	17,19,21	2.14	5 (29%)
3	NAG	C	2	3	14,14,15	0.76	0	17,19,21	1.42	3 (17%)
3	BMA	C	3	3	11,11,12	0.26	0	15,15,17	0.64	0
3	MAN	C	4	3	11,11,12	0.67	0	15,15,17	0.63	0
3	FUC	C	5	3	10,10,11	1.00	0	14,14,16	1.56	2 (14%)
4	NAG	D	1	1,4	14,14,15	0.82	0	17,19,21	1.53	4 (23%)
4	NAG	D	2	4	14,14,15	0.72	0	17,19,21	1.01	1 (5%)
4	NAG	E	1	1,4	14,14,15	0.76	0	17,19,21	0.88	0
4	NAG	E	2	4	14,14,15	0.69	0	17,19,21	0.97	0
2	NAG	F	1	1,2	14,14,15	0.74	0	17,19,21	1.23	3 (17%)
2	NAG	F	2	2	14,14,15	0.48	0	17,19,21	1.33	1 (5%)
2	BMA	F	3	2	11,11,12	0.26	0	15,15,17	0.64	0
5	NAG	G	1	1,5	14,14,15	0.57	0	17,19,21	0.66	0
5	NAG	G	2	5	14,14,15	0.56	0	17,19,21	1.11	2 (11%)
5	BMA	G	3	5	11,11,12	0.26	0	15,15,17	0.64	0
5	FUC	G	4	5	10,10,11	0.77	0	14,14,16	1.10	2 (14%)

In the following table, the Chirals column lists the number of chiral outliers, the number of chiral centers analysed, the number of these observed in the model and the number defined in the Chemical Component Dictionary. Similar counts are reported in the Torsion and Rings columns. '-' means no outliers of that kind were identified.

Mol	Type	Chain	Res	Link	Chirals	Torsions	Rings
2	NAG	B	1	1,2	-	0/6/23/26	0/1/1/1
2	NAG	B	2	2	-	0/6/23/26	0/1/1/1
2	BMA	B	3	2	-	2/2/19/22	1/1/1/1
3	NAG	C	1	1,3	-	3/6/23/26	0/1/1/1
3	NAG	C	2	3	-	2/6/23/26	0/1/1/1
3	BMA	C	3	3	-	1/2/19/22	0/1/1/1
3	MAN	C	4	3	-	0/2/19/22	0/1/1/1
3	FUC	C	5	3	-	-	0/1/1/1
4	NAG	D	1	1,4	-	0/6/23/26	0/1/1/1
4	NAG	D	2	4	-	1/6/23/26	0/1/1/1
4	NAG	E	1	1,4	-	0/6/23/26	0/1/1/1
4	NAG	E	2	4	-	0/6/23/26	0/1/1/1
2	NAG	F	1	1,2	-	0/6/23/26	0/1/1/1
2	NAG	F	2	2	-	1/6/23/26	0/1/1/1
2	BMA	F	3	2	-	0/2/19/22	0/1/1/1
5	NAG	G	1	1,5	-	4/6/23/26	0/1/1/1
5	NAG	G	2	5	-	0/6/23/26	0/1/1/1

Continued on next page...

Continued from previous page...

Mol	Type	Chain	Res	Link	Chirals	Torsions	Rings
5	BMA	G	3	5	-	0/2/19/22	0/1/1/1
5	FUC	G	4	5	-	-	0/1/1/1

All (1) bond length outliers are listed below:

Mol	Chain	Res	Type	Atoms	Z	Observed(Å)	Ideal(Å)
2	B	1	NAG	O5-C1	-2.03	1.40	1.43

All (26) bond angle outliers are listed below:

Mol	Chain	Res	Type	Atoms	Z	Observed(°)	Ideal(°)
3	C	1	NAG	O5-C1-C2	4.98	119.15	111.29
4	D	1	NAG	C4-C3-C2	4.00	116.87	111.02
3	C	5	FUC	O5-C1-C2	-3.72	105.03	110.77
2	F	2	NAG	O5-C5-C6	3.65	112.92	107.20
3	C	1	NAG	C6-C5-C4	3.63	121.50	113.00
3	C	1	NAG	O4-C4-C3	-3.48	102.30	110.35
3	C	1	NAG	O6-C6-C5	3.47	123.19	111.29
2	F	1	NAG	O5-C5-C6	3.26	112.32	107.20
3	C	2	NAG	C4-C3-C2	3.26	115.80	111.02
4	D	1	NAG	C1-O5-C5	2.76	115.93	112.19
2	B	3	BMA	O5-C5-C6	2.65	111.36	107.20
4	D	2	NAG	O5-C5-C6	2.58	111.25	107.20
3	C	2	NAG	O5-C5-C6	2.52	111.16	107.20
2	B	1	NAG	C1-O5-C5	2.43	115.48	112.19
2	F	1	NAG	C1-O5-C5	2.41	115.46	112.19
3	C	5	FUC	O3-C3-C2	2.37	114.54	109.99
5	G	2	NAG	C4-C3-C2	-2.35	107.57	111.02
4	D	1	NAG	O5-C5-C6	2.28	110.79	107.20
3	C	2	NAG	O5-C5-C4	-2.25	105.35	110.83
2	F	1	NAG	C6-C5-C4	-2.19	107.87	113.00
2	B	2	NAG	O5-C5-C6	2.10	110.50	107.20
4	D	1	NAG	O5-C5-C4	-2.06	105.83	110.83
5	G	2	NAG	C1-O5-C5	2.05	114.97	112.19
5	G	4	FUC	O5-C1-C2	-2.04	107.62	110.77
3	C	1	NAG	C3-C4-C5	2.04	113.88	110.24
5	G	4	FUC	C1-C2-C3	-2.02	107.19	109.67

There are no chirality outliers.

All (14) torsion outliers are listed below:

Mol	Chain	Res	Type	Atoms
5	G	1	NAG	C8-C7-N2-C2
5	G	1	NAG	O7-C7-N2-C2
3	C	1	NAG	C4-C5-C6-O6
3	C	1	NAG	O5-C5-C6-O6
5	G	1	NAG	C1-C2-N2-C7
2	B	3	BMA	O5-C5-C6-O6
3	C	2	NAG	O5-C5-C6-O6
2	B	3	BMA	C4-C5-C6-O6
3	C	1	NAG	C1-C2-N2-C7
3	C	2	NAG	C4-C5-C6-O6
2	F	2	NAG	O5-C5-C6-O6
3	C	3	BMA	O5-C5-C6-O6
5	G	1	NAG	C3-C2-N2-C7
4	D	2	NAG	O5-C5-C6-O6

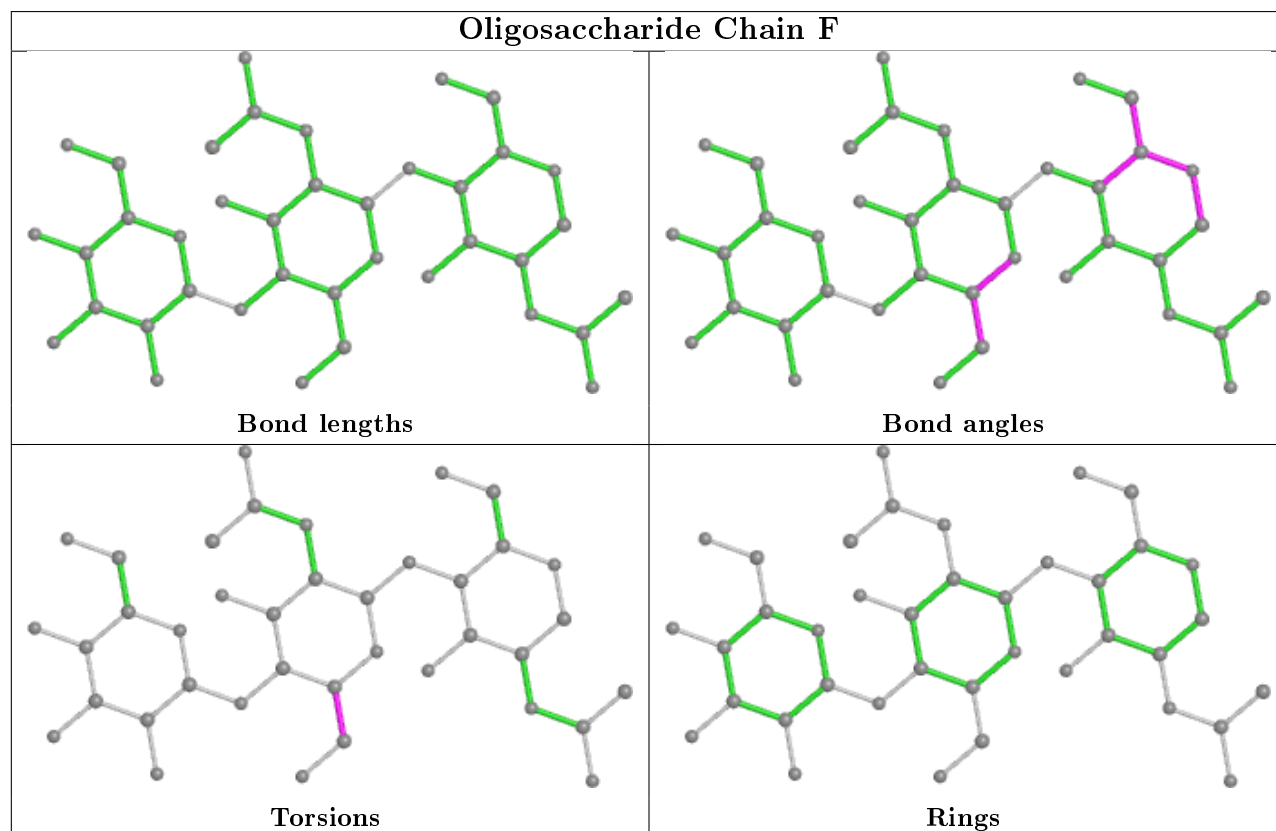
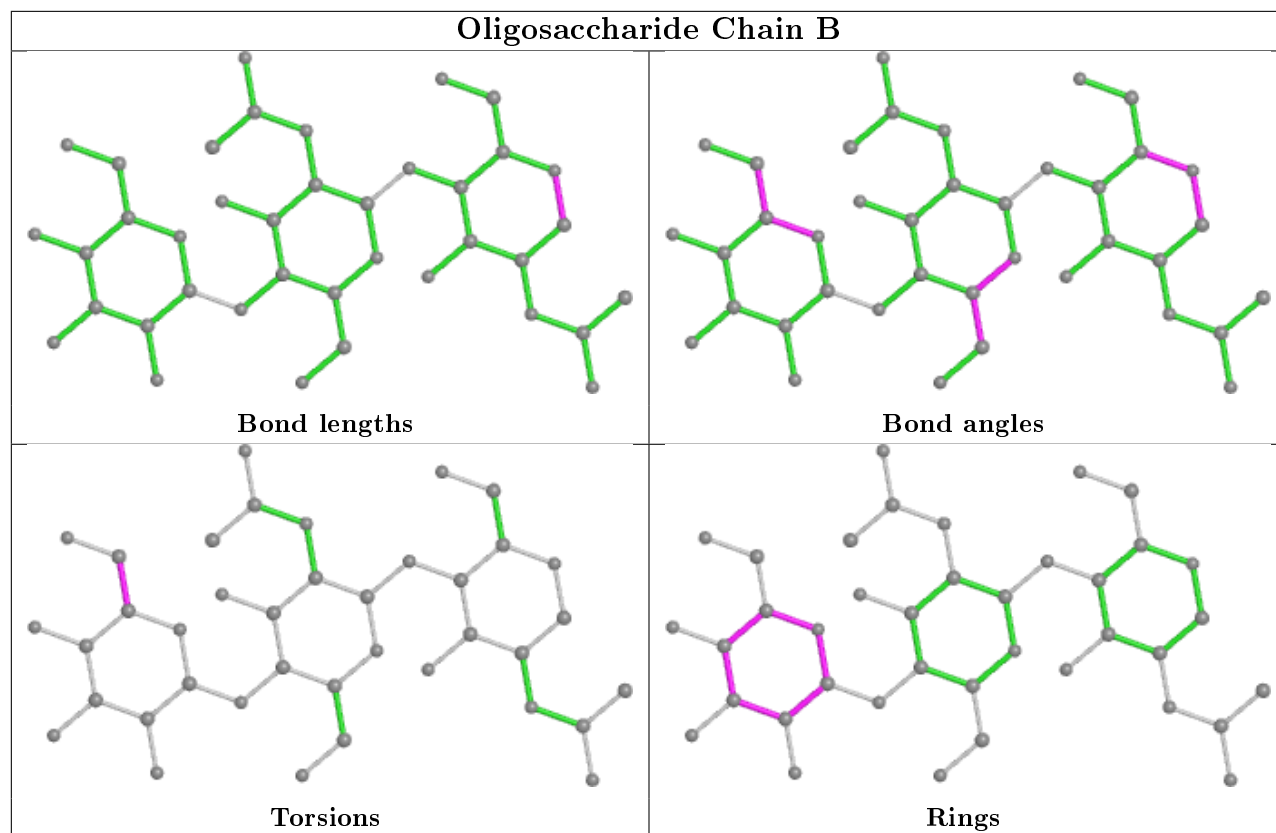
All (1) ring outliers are listed below:

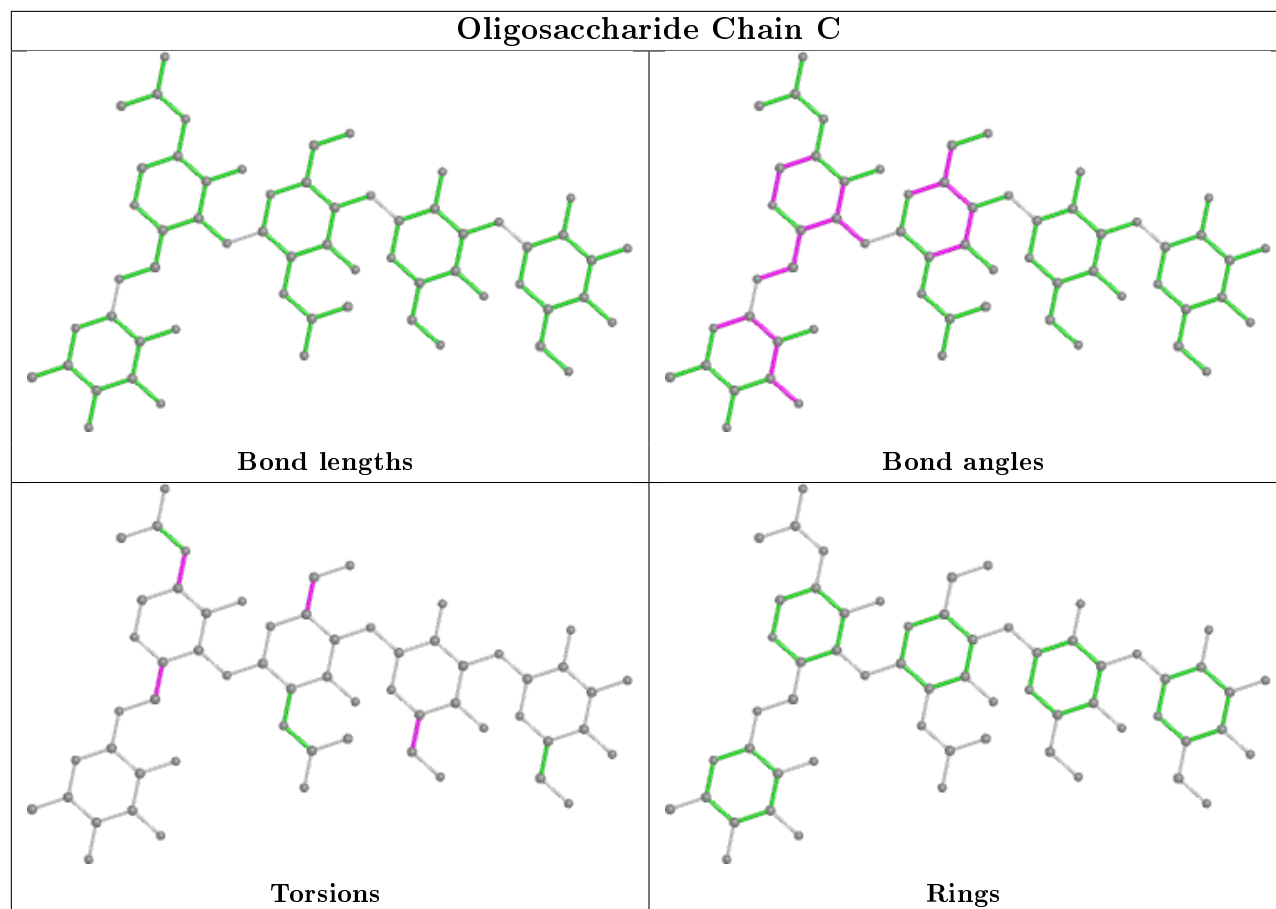
Mol	Chain	Res	Type	Atoms
2	B	3	BMA	C1-C2-C3-C4-C5-O5

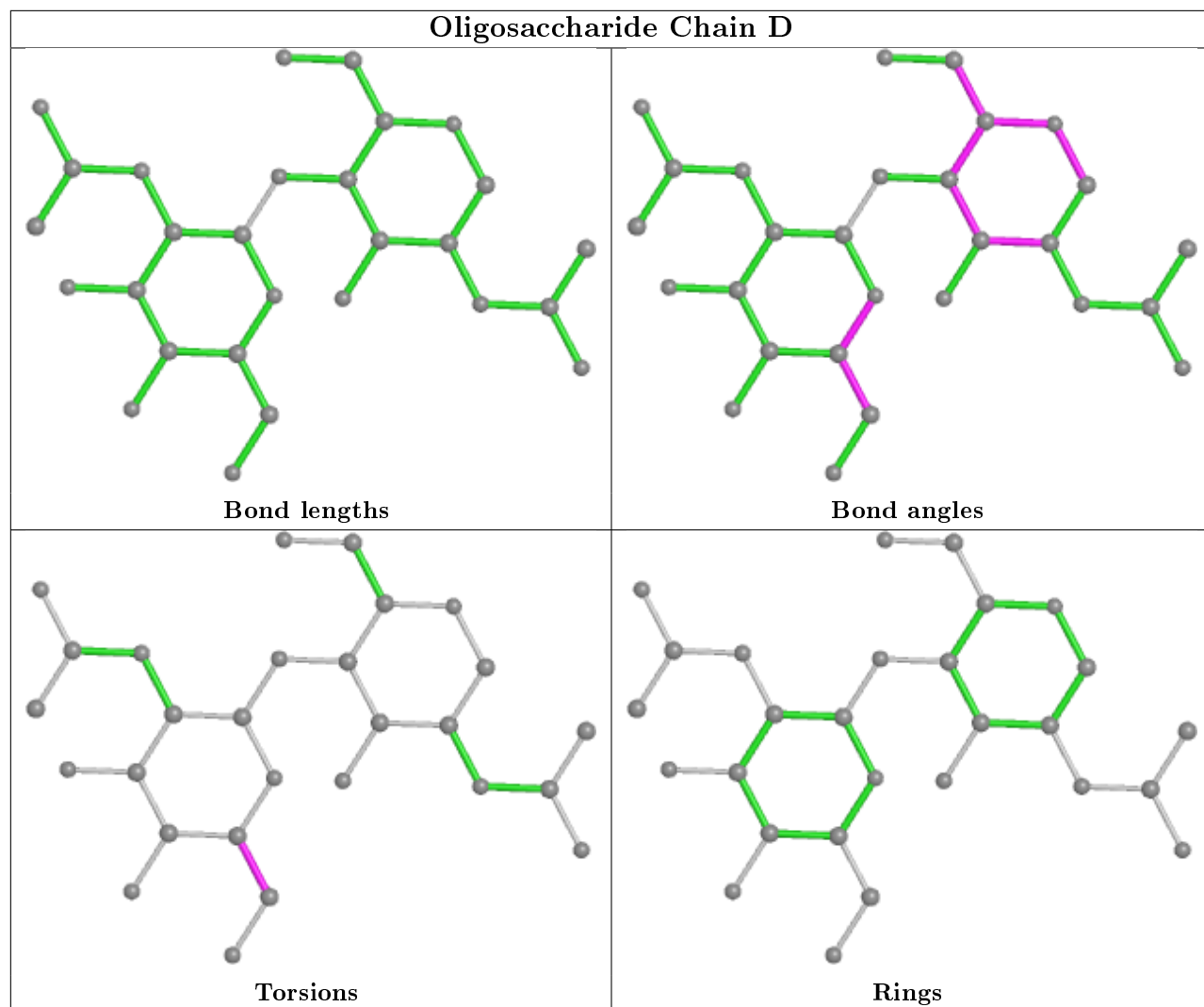
8 monomers are involved in 16 short contacts:

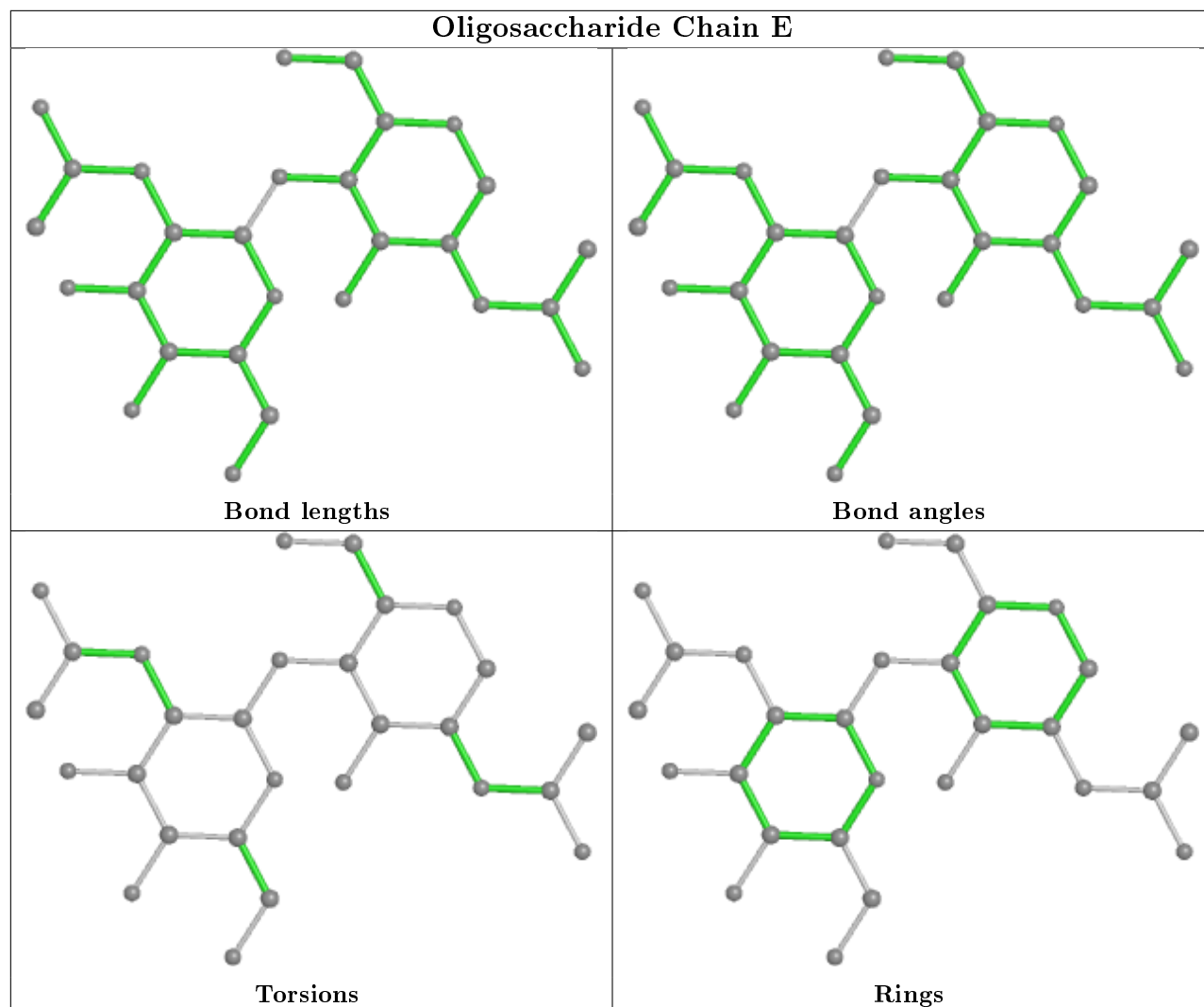
Mol	Chain	Res	Type	Clashes	Symm-Clashes
2	B	1	NAG	1	0
5	G	1	NAG	8	0
2	F	1	NAG	2	0
3	C	5	FUC	2	0
5	G	4	FUC	3	0
5	G	2	NAG	4	0
3	C	1	NAG	1	0
4	E	1	NAG	3	0

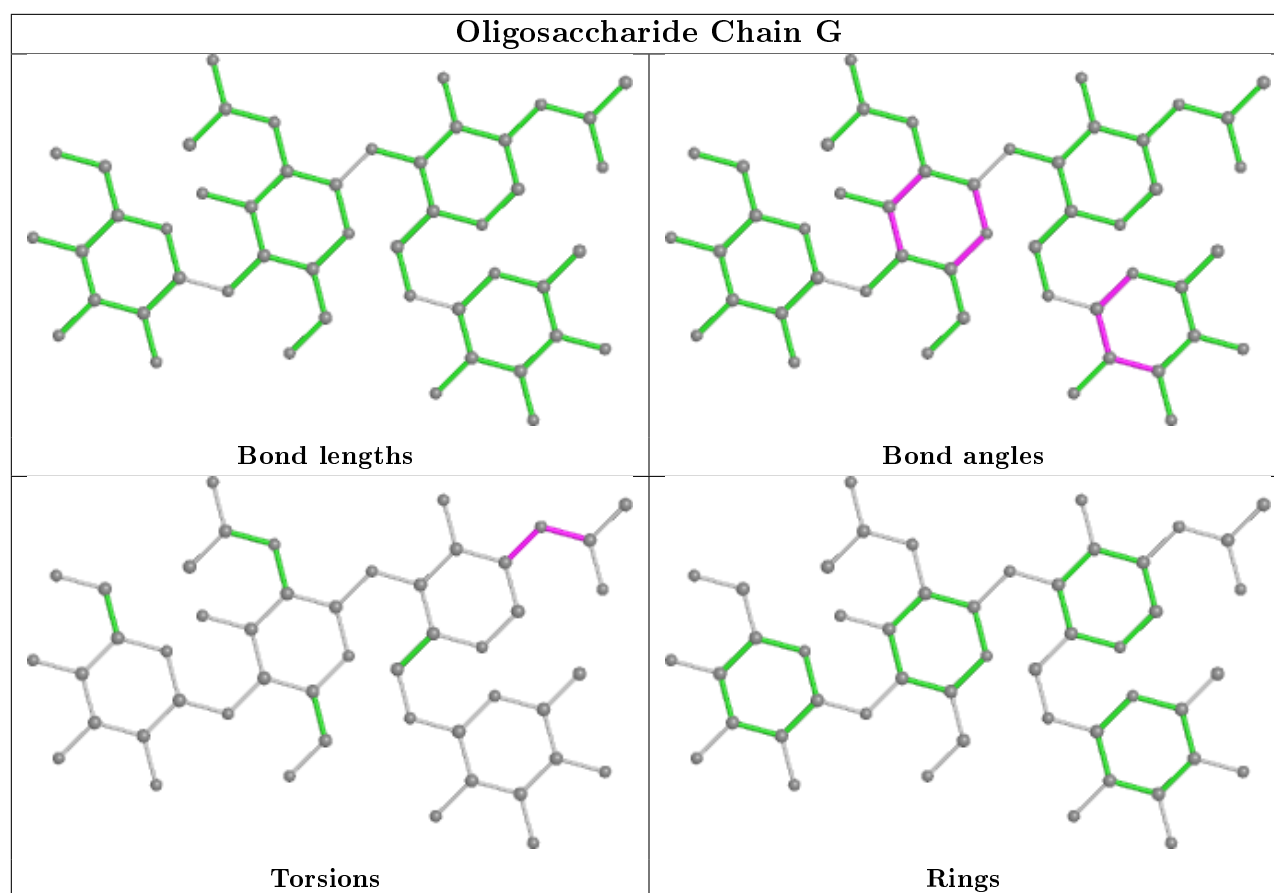
The following is a two-dimensional graphical depiction of Mogul quality analysis of bond lengths, bond angles, torsion angles, and ring geometry for oligosaccharide.











5.6 Ligand geometry [i](#)

1 ligand is modelled in this entry.

In the following table, the Counts columns list the number of bonds (or angles) for which Mogul statistics could be retrieved, the number of bonds (or angles) that are observed in the model and the number of bonds (or angles) that are defined in the Chemical Component Dictionary. The Link column lists molecule types, if any, to which the group is linked. The Z score for a bond length (or angle) is the number of standard deviations the observed value is removed from the expected value. A bond length (or angle) with $|Z| > 2$ is considered an outlier worth inspection. RMSZ is the root-mean-square of all Z scores of the bond lengths (or angles).

Mol	Type	Chain	Res	Link	Bond lengths			Bond angles		
					Counts	RMSZ	$\# Z > 2$	Counts	RMSZ	$\# Z > 2$
6	NAG	A	420	1	14,14,15	1.33	1 (7%)	17,19,21	1.58	3 (17%)

In the following table, the Chirals column lists the number of chiral outliers, the number of chiral centers analysed, the number of these observed in the model and the number defined in the Chemical Component Dictionary. Similar counts are reported in the Torsion and Rings columns. '-' means no outliers of that kind were identified.

Mol	Type	Chain	Res	Link	Chirals	Torsions	Rings
6	NAG	A	420	1	-	2/6/23/26	0/1/1/1

All (1) bond length outliers are listed below:

Mol	Chain	Res	Type	Atoms	Z	Observed(Å)	Ideal(Å)
6	A	420	NAG	C1-C2	3.53	1.57	1.52

All (3) bond angle outliers are listed below:

Mol	Chain	Res	Type	Atoms	Z	Observed(°)	Ideal(°)
6	A	420	NAG	C1-O5-C5	4.39	118.14	112.19
6	A	420	NAG	O5-C5-C6	2.25	110.73	107.20
6	A	420	NAG	C1-C2-N2	2.01	113.92	110.49

There are no chirality outliers.

All (2) torsion outliers are listed below:

Mol	Chain	Res	Type	Atoms
6	A	420	NAG	C4-C5-C6-O6
6	A	420	NAG	O5-C5-C6-O6

There are no ring outliers.

1 monomer is involved in 1 short contact:

Mol	Chain	Res	Type	Clashes	Symm-Clashes
6	A	420	NAG	1	0

5.7 Other polymers [i](#)

There are no such residues in this entry.

5.8 Polymer linkage issues [i](#)

There are no chain breaks in this entry.

6 Fit of model and data [i](#)

6.1 Protein, DNA and RNA chains [i](#)

In the following table, the column labelled ‘#RSRZ> 2’ contains the number (and percentage) of RSRZ outliers, followed by percent RSRZ outliers for the chain as percentile scores relative to all X-ray entries and entries of similar resolution. The OWAB column contains the minimum, median, 95th percentile and maximum values of the occupancy-weighted average B-factor per residue. The column labelled ‘Q< 0.9’ lists the number of (and percentage) of residues with an average occupancy less than 0.9.

Mol	Chain	Analysed	<RSRZ>	#RSRZ>2	OWAB(Å ²)	Q<0.9
1	A	306/313 (97%)	-0.34	0 100 100	88, 109, 148, 180	0

There are no RSRZ outliers to report.

6.2 Non-standard residues in protein, DNA, RNA chains [i](#)

There are no non-standard protein/DNA/RNA residues in this entry.

6.3 Carbohydrates [i](#)

In the following table, the Atoms column lists the number of modelled atoms in the group and the number defined in the chemical component dictionary. The B-factors column lists the minimum, median, 95th percentile and maximum values of B factors of atoms in the group. The column labelled ‘Q< 0.9’ lists the number of atoms with occupancy less than 0.9.

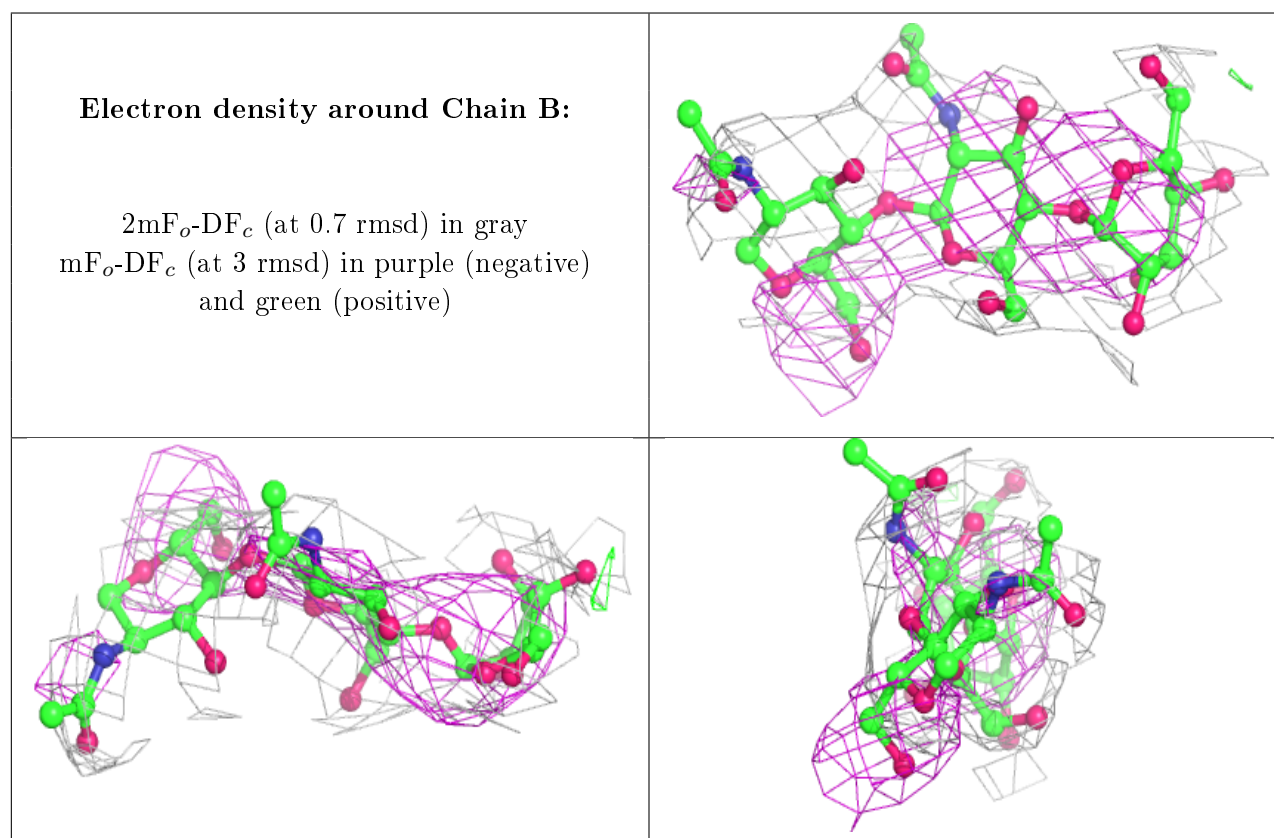
Mol	Type	Chain	Res	Atoms	RSCC	RSR	B-factors(Å ²)	Q<0.9
5	BMA	G	3	11/12	0.51	0.42	181,183,184,184	0
2	BMA	F	3	11/12	0.71	0.46	177,180,181,184	0
3	BMA	C	3	11/12	0.71	0.34	158,161,165,170	0
2	BMA	B	3	11/12	0.76	0.47	164,167,169,170	0
5	FUC	G	4	10/11	0.76	0.51	163,164,167,168	0
4	NAG	D	2	14/15	0.77	0.50	159,165,167,168	0
3	MAN	C	4	11/12	0.81	0.36	171,175,176,176	0
5	NAG	G	1	14/15	0.84	0.49	131,142,151,160	0
4	NAG	D	1	14/15	0.84	0.24	132,143,147,149	0
3	FUC	C	5	10/11	0.85	0.37	122,126,127,129	0
2	NAG	F	2	14/15	0.85	0.64	163,168,172,176	0
2	NAG	B	2	14/15	0.85	0.39	139,145,153,160	0
4	NAG	E	2	14/15	0.86	0.37	155,164,169,176	0
5	NAG	G	2	14/15	0.87	0.49	162,170,175,180	0

Continued on next page...

Continued from previous page...

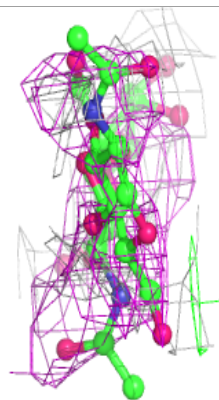
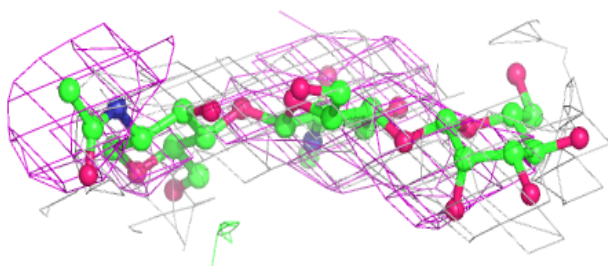
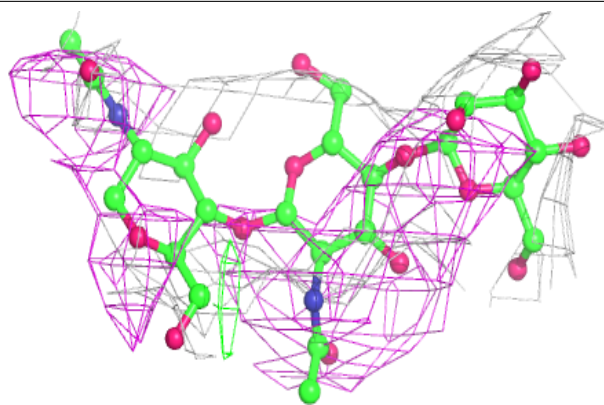
Mol	Type	Chain	Res	Atoms	RSCC	RSR	B-factors(\AA^2)	Q<0.9
2	NAG	B	1	14/15	0.87	0.28	103,108,113,118	0
2	NAG	F	1	14/15	0.88	0.39	117,127,138,141	0
4	NAG	E	1	14/15	0.88	0.26	125,130,138,143	0
3	NAG	C	2	14/15	0.89	0.41	127,136,142,150	0
3	NAG	C	1	14/15	0.94	0.26	98,106,116,121	0

The following is a graphical depiction of the model fit to experimental electron density for oligosaccharide. Each fit is shown from different orientation to approximate a three-dimensional view.

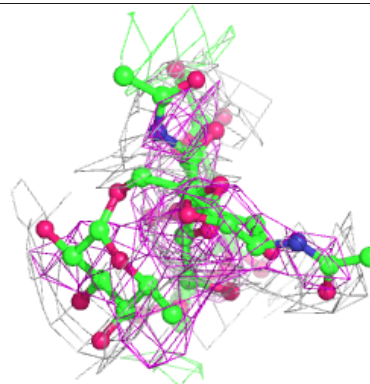
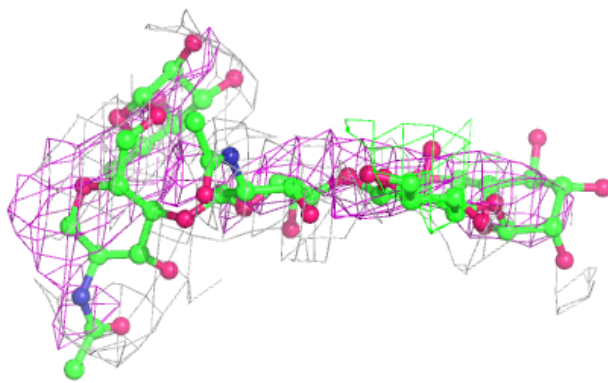
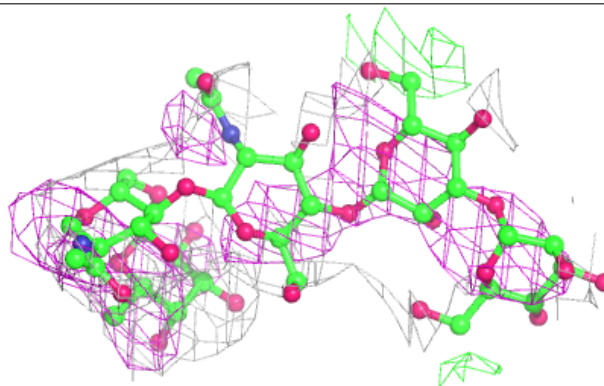


Electron density around Chain F:

$2mF_o-DF_c$ (at 0.7 rmsd) in gray
 mF_o-DF_c (at 3 rmsd) in purple (negative)
and green (positive)

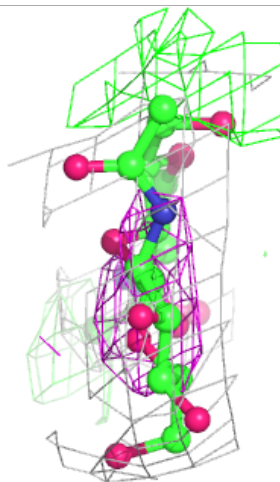
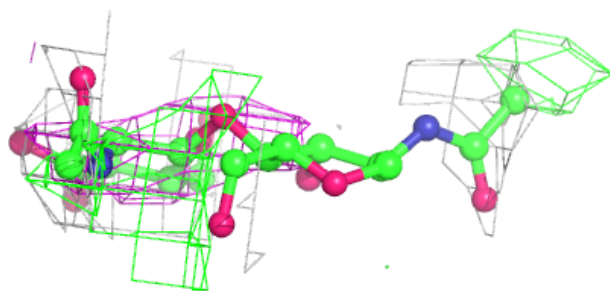
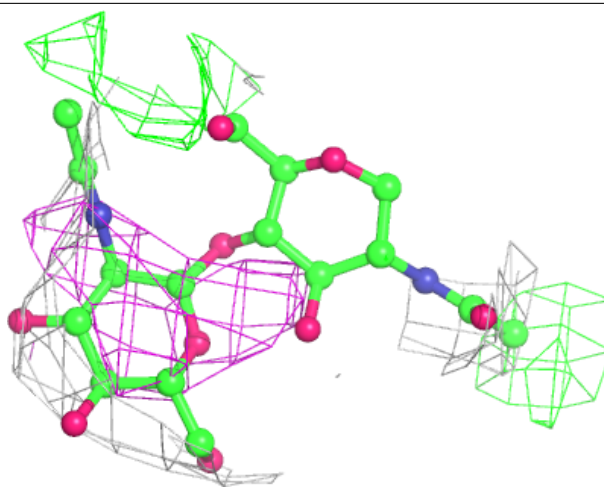
**Electron density around Chain C:**

$2mF_o-DF_c$ (at 0.7 rmsd) in gray
 mF_o-DF_c (at 3 rmsd) in purple (negative)
and green (positive)



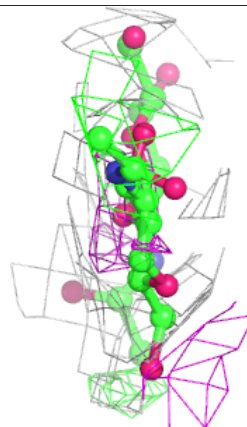
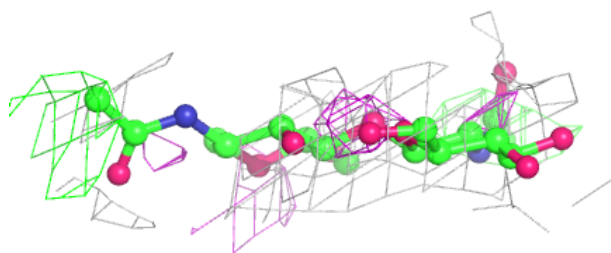
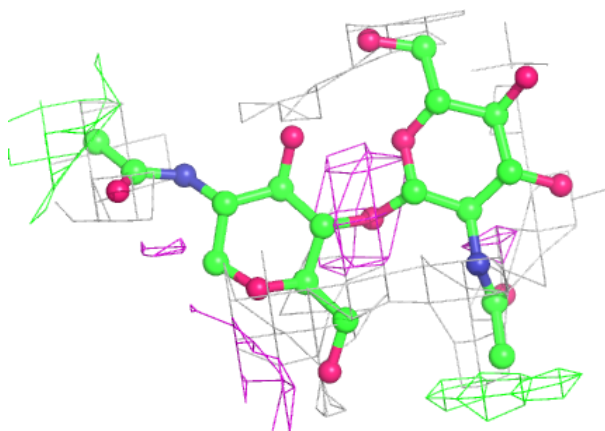
Electron density around Chain D:

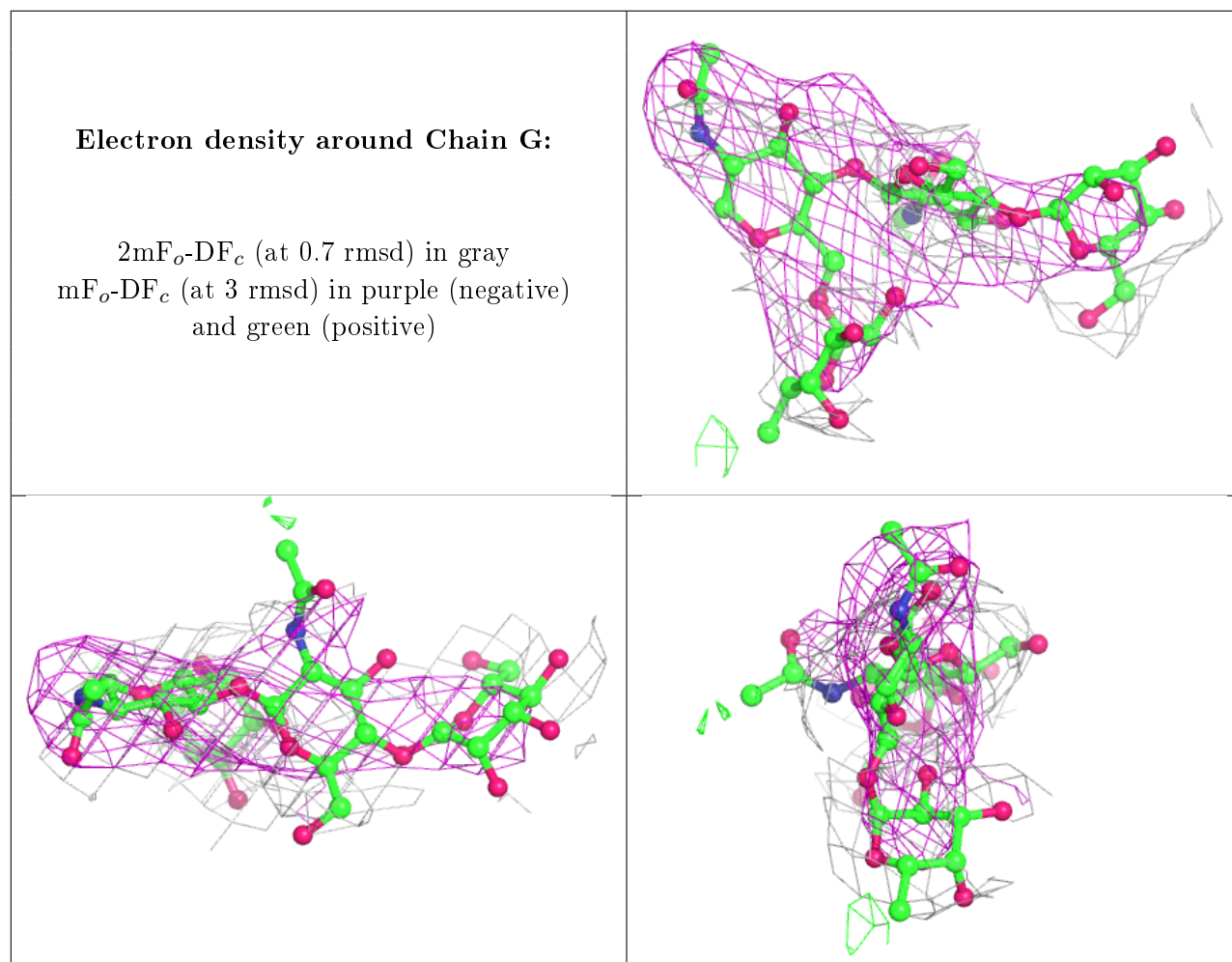
$2mF_o-DF_c$ (at 0.7 rmsd) in gray
 mF_o-DF_c (at 3 rmsd) in purple (negative)
and green (positive)



Electron density around Chain E:

$2mF_o - DF_c$ (at 0.7 rmsd) in gray
 $mF_o - DF_c$ (at 3 rmsd) in purple (negative)
and green (positive)





6.4 Ligands [i](#)

In the following table, the Atoms column lists the number of modelled atoms in the group and the number defined in the chemical component dictionary. The B-factors column lists the minimum, median, 95th percentile and maximum values of B factors of atoms in the group. The column labelled 'Q<0.9' lists the number of atoms with occupancy less than 0.9.

Mol	Type	Chain	Res	Atoms	RSCC	RSR	B-factors(Å ²)	Q<0.9
6	NAG	A	420	14/15	0.81	0.28	108,111,113,114	0

6.5 Other polymers [i](#)

There are no such residues in this entry.