



Full wwPDB X-ray Structure Validation Report ⓘ

May 15, 2020 – 06:45 pm BST

PDB ID : 5FQC
Title : Crystal structure of the metallo-beta-lactamase VIM-2 with 2C
Authors : Brem, J.; Cain, R.; McDonough, M.A.; Clifton, I.J.; Fishwick, C.W.G.; Schofield, C.J.
Deposited on : 2015-12-08
Resolution : 1.45 Å(reported)

This is a Full wwPDB X-ray Structure Validation Report for a publicly released PDB entry.

We welcome your comments at validation@mail.wwpdb.org

A user guide is available at

<https://www.wwpdb.org/validation/2017/XrayValidationReportHelp>

with specific help available everywhere you see the ⓘ symbol.

The following versions of software and data (see [references ⓘ](#)) were used in the production of this report:

MolProbity : 4.02b-467
Mogul : 1.8.5 (274361), CSD as541be (2020)
Xtriage (Phenix) : 1.13
EDS : 2.11
buster-report : 1.1.7 (2018)
Percentile statistics : 20191225.v01 (using entries in the PDB archive December 25th 2019)
Refmac : 5.8.0158
CCP4 : 7.0.044 (Gargrove)
Ideal geometry (proteins) : Engh & Huber (2001)
Ideal geometry (DNA, RNA) : Parkinson et al. (1996)
Validation Pipeline (wwPDB-VP) : 2.11

Mol	Type	Chain	Res	Chirality	Geometry	Clashes	Electron density
5	DMS	A	700	-	-	X	-

2 Entry composition [i](#)

There are 6 unique types of molecules in this entry. The entry contains 4090 atoms, of which 0 are hydrogens and 0 are deuteriums.

In the tables below, the ZeroOcc column contains the number of atoms modelled with zero occupancy, the AltConf column contains the number of residues with at least one atom in alternate conformation and the Trace column contains the number of residues modelled with at most 2 atoms.

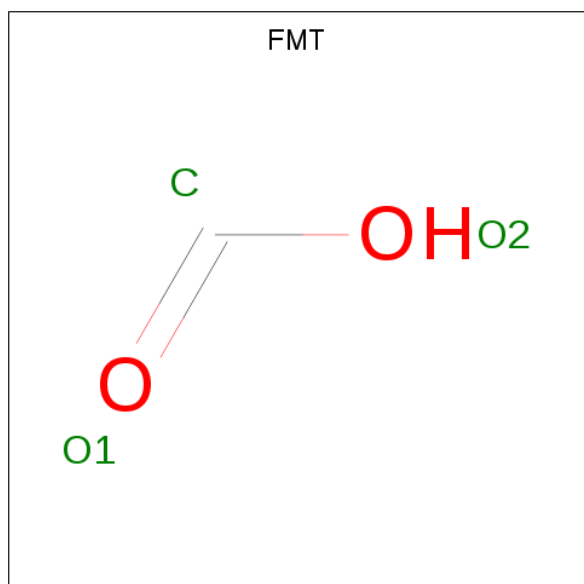
- Molecule 1 is a protein called BETA-LACTAMASE.

Mol	Chain	Residues	Atoms					ZeroOcc	AltConf	Trace
1	A	232	Total	C	N	O	S	0	6	1
			1772	1119	309	343	1			
1	B	232	Total	C	N	O	S	0	8	1
			1797	1131	311	354	1			

There are 4 discrepancies between the modelled and reference sequences:

Chain	Residue	Modelled	Actual	Comment	Reference
A	25	GLY	-	expression tag	UNP Q9K2N0
A	26	PRO	-	expression tag	UNP Q9K2N0
B	25	GLY	-	expression tag	UNP Q9K2N0
B	26	PRO	-	expression tag	UNP Q9K2N0

- Molecule 2 is FORMIC ACID (three-letter code: FMT) (formula: CH₂O₂).

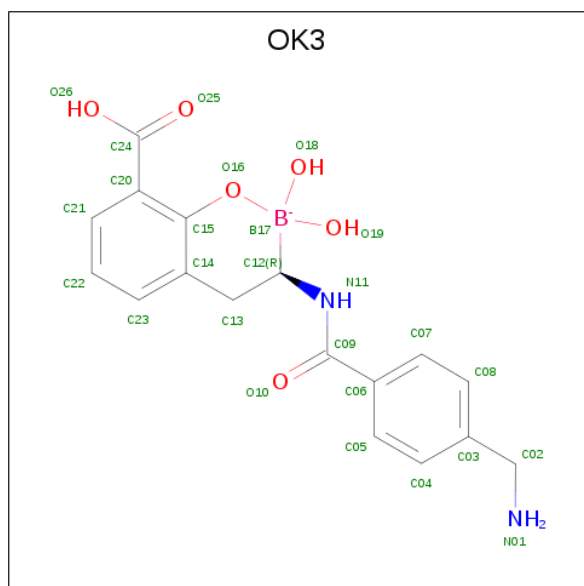


Mol	Chain	Residues	Atoms	ZeroOcc	AltConf
2	A	1	Total C O 3 1 2	0	0
2	A	1	Total C O 3 1 2	0	0
2	B	1	Total C O 3 1 2	0	0
2	B	1	Total C O 3 1 2	0	0

- Molecule 3 is ZINC ION (three-letter code: ZN) (formula: Zn).

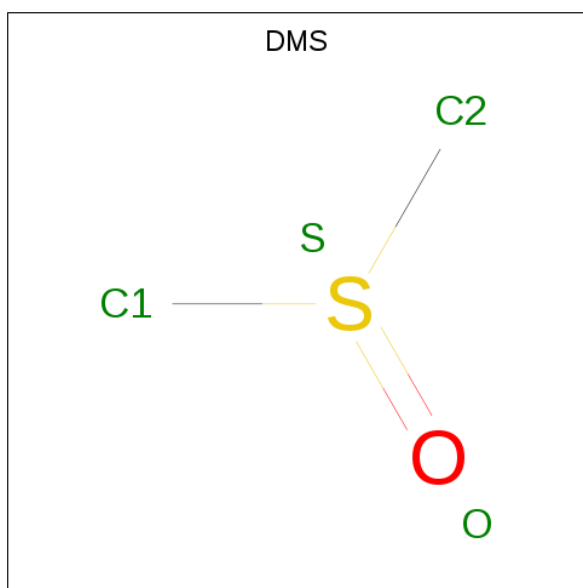
Mol	Chain	Residues	Atoms	ZeroOcc	AltConf
3	B	3	Total Zn 3 3	0	0
3	A	3	Total Zn 3 3	0	0

- Molecule 4 is (4 {R})-4-[[4-(aminomethyl)phenyl]carbonylamino]-3,3-bis(oxidanyl)-2-oxa-3-boranuidabicyclo[4.4.0]deca-1(10),6,8-triene-10-carboxylic acid (three-letter code: OK3) (formula: C₁₇H₁₈BN₂O₆).



Mol	Chain	Residues	Atoms	ZeroOcc	AltConf
4	A	1	Total B C N O 26 1 17 2 6	0	0
4	B	1	Total B C N O 26 1 17 2 6	0	0

- Molecule 5 is DIMETHYL SULFOXIDE (three-letter code: DMS) (formula: C_2H_6OS).



Mol	Chain	Residues	Atoms				ZeroOcc	AltConf
5	A	1	Total	C	O	S	0	0
			4	2	1	1		

- Molecule 6 is water.

Mol	Chain	Residues	Atoms		ZeroOcc	AltConf
6	A	214	Total	O	0	0
			214	214		
6	B	233	Total	O	0	0
			233	233		

3 Residue-property plots [i](#)

These plots are drawn for all protein, RNA and DNA chains in the entry. The first graphic for a chain summarises the proportions of the various outlier classes displayed in the second graphic. The second graphic shows the sequence view annotated by issues in geometry and electron density. Residues are color-coded according to the number of geometric quality criteria for which they contain at least one outlier: green = 0, yellow = 1, orange = 2 and red = 3 or more. A red dot above a residue indicates a poor fit to the electron density ($RSRZ > 2$). Stretches of 2 or more consecutive residues without any outlier are shown as a green connector. Residues present in the sample, but not in the model, are shown in grey.

• Molecule 1: BETA-LACTAMASE

Chain A: 



• Molecule 1: BETA-LACTAMASE

Chain B: 



4 Data and refinement statistics

Property	Value	Source
Space group	C 1 2 1	Depositor
Cell constants a, b, c, α , β , γ	101.93Å 79.15Å 67.14Å 90.00° 130.16° 90.00°	Depositor
Resolution (Å)	28.89 – 1.45 28.89 – 1.45	Depositor EDS
% Data completeness (in resolution range)	99.3 (28.89-1.45) 93.1 (28.89-1.45)	Depositor EDS
R_{merge}	0.06	Depositor
R_{sym}	(Not available)	Depositor
$\langle I/\sigma(I) \rangle$ ¹	1.34 (at 1.45Å)	Xtriage
Refinement program	PHENIX (PHENIX.REFINE)	Depositor
R, R_{free}	0.155 , 0.184 0.165 , 0.192	Depositor DCC
R_{free} test set	1975 reflections (2.75%)	wwPDB-VP
Wilson B-factor (Å ²)	13.2	Xtriage
Anisotropy	0.442	Xtriage
Bulk solvent k_{sol} (e/Å ³), B_{sol} (Å ²)	0.37 , 43.1	EDS
L-test for twinning ²	$\langle L \rangle = 0.47$, $\langle L^2 \rangle = 0.30$	Xtriage
Estimated twinning fraction	0.018 for k+l,h+l,-l 0.017 for -k+l,-h-l,-l 0.088 for -h-2*l,-k,l	Xtriage
F_o, F_c correlation	0.97	EDS
Total number of atoms	4090	wwPDB-VP
Average B, all atoms (Å ²)	19.0	wwPDB-VP

Xtriage's analysis on translational NCS is as follows: *The largest off-origin peak in the Patterson function is 7.07% of the height of the origin peak. No significant pseudotranslation is detected.*

¹Intensities estimated from amplitudes.

²Theoretical values of $\langle |L| \rangle$, $\langle L^2 \rangle$ for acentric reflections are 0.5, 0.333 respectively for untwinned datasets, and 0.375, 0.2 for perfectly twinned datasets.

5 Model quality [i](#)

5.1 Standard geometry [i](#)

Bond lengths and bond angles in the following residue types are not validated in this section: ZN, DMS, FMT, OK3

The Z score for a bond length (or angle) is the number of standard deviations the observed value is removed from the expected value. A bond length (or angle) with $|Z| > 5$ is considered an outlier worth inspection. RMSZ is the root-mean-square of all Z scores of the bond lengths (or angles).

Mol	Chain	Bond lengths		Bond angles	
		RMSZ	# $ Z > 5$	RMSZ	# $ Z > 5$
1	A	0.69	0/1817	0.91	4/2486 (0.2%)
1	B	0.70	2/1839 (0.1%)	0.84	5/2518 (0.2%)
All	All	0.69	2/3656 (0.1%)	0.87	9/5004 (0.2%)

All (2) bond length outliers are listed below:

Mol	Chain	Res	Type	Atoms	Z	Observed(Å)	Ideal(Å)
1	B	166	ARG	CG-CD	-7.05	1.34	1.51
1	B	141	ARG	CG-CD	5.09	1.64	1.51

All (9) bond angle outliers are listed below:

Mol	Chain	Res	Type	Atoms	Z	Observed(°)	Ideal(°)
1	A	127	ARG	NE-CZ-NH1	12.29	126.45	120.30
1	A	127	ARG	NE-CZ-NH2	-11.37	114.61	120.30
1	B	127	ARG	NE-CZ-NH1	6.23	123.42	120.30
1	A	118	ASP	CB-CG-OD1	5.92	123.63	118.30
1	B	140	ARG	NE-CZ-NH1	5.88	123.24	120.30
1	B	205	ARG	NE-CZ-NH1	5.71	123.15	120.30
1	B	163	ASP	CB-CG-OD1	5.38	123.14	118.30
1	B	45	ARG	NE-CZ-NH1	5.32	122.96	120.30
1	A	247	ASP	CB-CG-OD1	5.12	122.91	118.30

There are no chirality outliers.

There are no planarity outliers.

5.2 Too-close contacts ⓘ

In the following table, the Non-H and H(model) columns list the number of non-hydrogen atoms and hydrogen atoms in the chain respectively. The H(added) column lists the number of hydrogen atoms added and optimized by MolProbity. The Clashes column lists the number of clashes within the asymmetric unit, whereas Symm-Clashes lists symmetry related clashes.

Mol	Chain	Non-H	H(model)	H(added)	Clashes	Symm-Clashes
1	A	1772	0	1707	11	0
1	B	1797	0	1727	9	0
2	A	6	0	2	0	0
2	B	6	0	2	0	0
3	A	3	0	0	0	0
3	B	3	0	0	0	0
4	A	26	0	0	0	0
4	B	26	0	0	0	0
5	A	4	0	6	4	0
6	A	214	0	0	3	4
6	B	233	0	0	4	4
All	All	4090	0	3444	20	4

The all-atom clashscore is defined as the number of clashes found per 1000 atoms (including hydrogen atoms). The all-atom clashscore for this structure is 3.

All (20) close contacts within the same asymmetric unit are listed below, sorted by their clash magnitude.

Atom-1	Atom-2	Interatomic distance (Å)	Clash overlap (Å)
1:A:107:VAL:H	5:A:700:DMS:H11	1.36	0.88
1:A:32:GLU:N	6:A:2001:HOH:O	2.09	0.84
1:B:235:PHE:CE2	1:B:237[B]:ILE:HD11	2.24	0.71
1:A:171:GLU:OE1	6:A:2146:HOH:O	2.11	0.69
1:B:171:GLU:OE1	6:B:2155:HOH:O	2.12	0.67
1:A:98:GLU:OE2	1:A:102:GLN:NE2	2.28	0.61
1:B:235:PHE:HE2	1:B:237[B]:ILE:HD11	1.66	0.60
1:B:146:GLU:OE2	6:B:2118:HOH:O	2.17	0.60
1:A:107:VAL:H	5:A:700:DMS:C1	2.13	0.56
1:A:107:VAL:N	5:A:700:DMS:H11	2.16	0.56
1:B:247:ASP:HB3	6:B:2218:HOH:O	2.07	0.54
1:B:235:PHE:CD2	1:B:237[B]:ILE:HD11	2.45	0.51
1:A:146:GLU:HG2	6:A:2111:HOH:O	2.11	0.50
1:A:106:PRO:HA	5:A:700:DMS:H11	2.00	0.44
1:B:178:ALA:HB1	1:B:219:TRP:CD1	2.52	0.44
1:A:178:ALA:HB1	1:A:219:TRP:CD1	2.52	0.44

Continued on next page...

Continued from previous page...

Atom-1	Atom-2	Interatomic distance (Å)	Clash overlap (Å)
1:B:117:ASP:OD2	6:B:2092:HOH:O	2.20	0.43
1:B:82:LEU:O	1:B:110:ALA:HA	2.19	0.42
1:A:82:LEU:O	1:A:110:ALA:HA	2.20	0.41
1:A:195[A]:TYR:CZ	1:A:197:GLY:HA2	2.56	0.41

All (4) symmetry-related close contacts are listed below. The label for Atom-2 includes the symmetry operator and encoded unit-cell translations to be applied.

Atom-1	Atom-2	Interatomic distance (Å)	Clash overlap (Å)
6:A:2112:HOH:O	6:B:2151:HOH:O[4_558]	2.01	0.19
6:A:2054:HOH:O	6:B:2091:HOH:O[4_557]	2.02	0.18
6:A:2054:HOH:O	6:B:2120:HOH:O[4_557]	2.06	0.14
6:A:2054:HOH:O	6:B:2092:HOH:O[4_557]	2.15	0.05

5.3 Torsion angles ⓘ

5.3.1 Protein backbone ⓘ

In the following table, the Percentiles column shows the percent Ramachandran outliers of the chain as a percentile score with respect to all X-ray entries followed by that with respect to entries of similar resolution.

The Analysed column shows the number of residues for which the backbone conformation was analysed, and the total number of residues.

Mol	Chain	Analysed	Favoured	Allowed	Outliers	Percentiles	
1	A	236/242 (98%)	232 (98%)	4 (2%)	0	100	100
1	B	238/242 (98%)	233 (98%)	4 (2%)	1 (0%)	34	13
All	All	474/484 (98%)	465 (98%)	8 (2%)	1 (0%)	47	23

All (1) Ramachandran outliers are listed below:

Mol	Chain	Res	Type
1	B	178	ALA

5.3.2 Protein sidechains ⓘ

In the following table, the Percentiles column shows the percent sidechain outliers of the chain as a percentile score with respect to all X-ray entries followed by that with respect to entries of similar

resolution.

The Analysed column shows the number of residues for which the sidechain conformation was analysed, and the total number of residues.

Mol	Chain	Analysed	Rotameric	Outliers	Percentiles	
1	A	184/193 (95%)	183 (100%)	1 (0%)	88	74
1	B	190/193 (98%)	189 (100%)	1 (0%)	88	74
All	All	374/386 (97%)	372 (100%)	2 (0%)	86	74

All (2) residues with a non-rotameric sidechain are listed below:

Mol	Chain	Res	Type
1	A	183	ASN
1	B	183	ASN

Some sidechains can be flipped to improve hydrogen bonding and reduce clashes. There are no such sidechains identified.

5.3.3 RNA [i](#)

There are no RNA molecules in this entry.

5.4 Non-standard residues in protein, DNA, RNA chains [i](#)

There are no non-standard protein/DNA/RNA residues in this entry.

5.5 Carbohydrates [i](#)

There are no carbohydrates in this entry.

5.6 Ligand geometry [i](#)

Of 13 ligands modelled in this entry, 6 are monoatomic - leaving 7 for Mogul analysis.

In the following table, the Counts columns list the number of bonds (or angles) for which Mogul statistics could be retrieved, the number of bonds (or angles) that are observed in the model and the number of bonds (or angles) that are defined in the Chemical Component Dictionary. The Link column lists molecule types, if any, to which the group is linked. The Z score for a bond length (or angle) is the number of standard deviations the observed value is removed from the expected value. A bond length (or angle) with $|Z| > 2$ is considered an outlier worth inspection. RMSZ is the root-mean-square of all Z scores of the bond lengths (or angles).

Mol	Type	Chain	Res	Link	Bond lengths			Bond angles		
					Counts	RMSZ	# Z > 2	Counts	RMSZ	# Z > 2
5	DMS	A	700	-	3,3,3	0.60	0	3,3,3	2.24	1 (33%)
2	FMT	B	400	3	0,2,2	0.00	-	0,1,1	0.00	-
4	OK3	A	600	3	23,28,28	1.78	5 (21%)	25,41,41	1.44	3 (12%)
2	FMT	A	401	3	0,2,2	0.00	-	0,1,1	0.00	-
2	FMT	A	400	3	0,2,2	0.00	-	0,1,1	0.00	-
2	FMT	B	401	3	0,2,2	0.00	-	0,1,1	0.00	-
4	OK3	B	600	3	23,28,28	1.87	6 (26%)	25,41,41	1.83	8 (32%)

In the following table, the Chirals column lists the number of chiral outliers, the number of chiral centers analysed, the number of these observed in the model and the number defined in the Chemical Component Dictionary. Similar counts are reported in the Torsion and Rings columns. '-' means no outliers of that kind were identified.

Mol	Type	Chain	Res	Link	Chirals	Torsions	Rings
4	OK3	A	600	3	-	0/9/29/29	0/2/3/3
4	OK3	B	600	3	-	0/9/29/29	0/2/3/3

All (11) bond length outliers are listed below:

Mol	Chain	Res	Type	Atoms	Z	Observed(Å)	Ideal(Å)
4	A	600	OK3	O16-C15	5.01	1.44	1.35
4	B	600	OK3	C09-N11	4.36	1.43	1.34
4	B	600	OK3	O16-C15	4.21	1.42	1.35
4	A	600	OK3	C09-N11	3.63	1.42	1.34
4	B	600	OK3	B17-C12	3.51	1.66	1.60
4	B	600	OK3	C20-C24	3.17	1.50	1.47
4	B	600	OK3	C15-C14	-2.93	1.34	1.40
4	A	600	OK3	C20-C24	2.92	1.50	1.47
4	A	600	OK3	B17-C12	2.66	1.65	1.60
4	A	600	OK3	C15-C14	-2.53	1.35	1.40
4	B	600	OK3	C13-C12	-2.13	1.50	1.54

All (12) bond angle outliers are listed below:

Mol	Chain	Res	Type	Atoms	Z	Observed(°)	Ideal(°)
4	B	600	OK3	C20-C15-C14	3.89	125.47	120.64
4	B	600	OK3	C22-C23-C14	-3.80	115.23	120.89
5	A	700	DMS	O-S-C2	3.55	124.63	106.54
4	A	600	OK3	C07-C06-C05	3.17	123.10	118.59
4	A	600	OK3	C14-C13-C12	-2.88	110.55	114.34
4	B	600	OK3	O10-C09-N11	-2.85	117.20	122.45

Continued on next page...

Continued from previous page...

Mol	Chain	Res	Type	Atoms	Z	Observed(°)	Ideal(°)
4	B	600	OK3	C04-C05-C06	-2.70	117.64	120.78
4	B	600	OK3	C07-C08-C03	-2.55	117.52	121.03
4	B	600	OK3	C08-C03-C04	2.53	122.14	118.17
4	B	600	OK3	O10-C09-C06	2.50	125.39	120.94
4	A	600	OK3	C08-C07-C06	-2.27	118.13	120.78
4	B	600	OK3	C23-C22-C21	2.11	123.25	120.25

There are no chirality outliers.

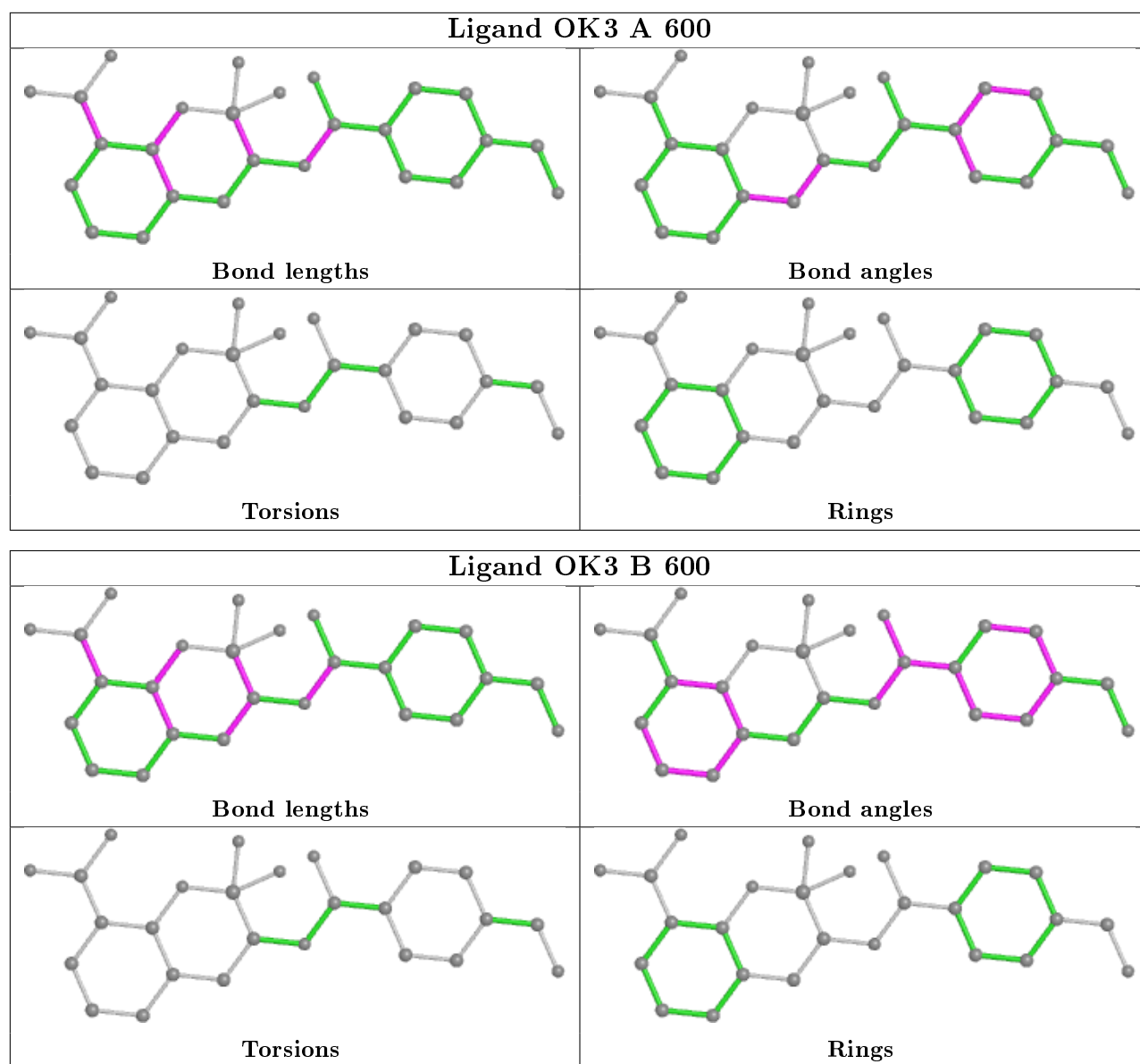
There are no torsion outliers.

There are no ring outliers.

1 monomer is involved in 4 short contacts:

Mol	Chain	Res	Type	Clashes	Symm-Clashes
5	A	700	DMS	4	0

The following is a two-dimensional graphical depiction of Mogul quality analysis of bond lengths, bond angles, torsion angles, and ring geometry for all instances of the Ligand of Interest. In addition, ligands with molecular weight > 250 and outliers as shown on the validation Tables will also be included. For torsion angles, if less than 5% of the Mogul distribution of torsion angles is within 10 degrees of the torsion angle in question, then that torsion angle is considered an outlier. Any bond that is central to one or more torsion angles identified as an outlier by Mogul will be highlighted in the graph. For rings, the root-mean-square deviation (RMSD) between the ring in question and similar rings identified by Mogul is calculated over all ring torsion angles. If the average RMSD is greater than 60 degrees and the minimal RMSD between the ring in question and any Mogul-identified rings is also greater than 60 degrees, then that ring is considered an outlier. The outliers are highlighted in purple. The color gray indicates Mogul did not find sufficient equivalents in the CSD to analyse the geometry.



5.7 Other polymers [i](#)

There are no such residues in this entry.

5.8 Polymer linkage issues [i](#)

There are no chain breaks in this entry.

6 Fit of model and data [i](#)

6.1 Protein, DNA and RNA chains [i](#)

In the following table, the column labelled ‘#RSRZ> 2’ contains the number (and percentage) of RSRZ outliers, followed by percent RSRZ outliers for the chain as percentile scores relative to all X-ray entries and entries of similar resolution. The OWAB column contains the minimum, median, 95th percentile and maximum values of the occupancy-weighted average B-factor per residue. The column labelled ‘Q< 0.9’ lists the number of (and percentage) of residues with an average occupancy less than 0.9.

Mol	Chain	Analysed	<RSRZ>	#RSRZ>2	OWAB(Å ²)	Q<0.9
1	A	232/242 (95%)	0.10	3 (1%) 77 77	10, 17, 32, 47	0
1	B	232/242 (95%)	0.09	5 (2%) 62 63	10, 16, 30, 43	0
All	All	464/484 (95%)	0.09	8 (1%) 70 70	10, 17, 31, 47	0

All (8) RSRZ outliers are listed below:

Mol	Chain	Res	Type	RSRZ
1	B	263	SER	6.4
1	B	195[A]	TYR	3.1
1	B	237[A]	ILE	2.6
1	A	263	SER	2.6
1	B	51[A]	ASP	2.6
1	A	83	ILE	2.5
1	A	41	VAL	2.4
1	B	37	SER	2.0

6.2 Non-standard residues in protein, DNA, RNA chains [i](#)

There are no non-standard protein/DNA/RNA residues in this entry.

6.3 Carbohydrates [i](#)

There are no carbohydrates in this entry.

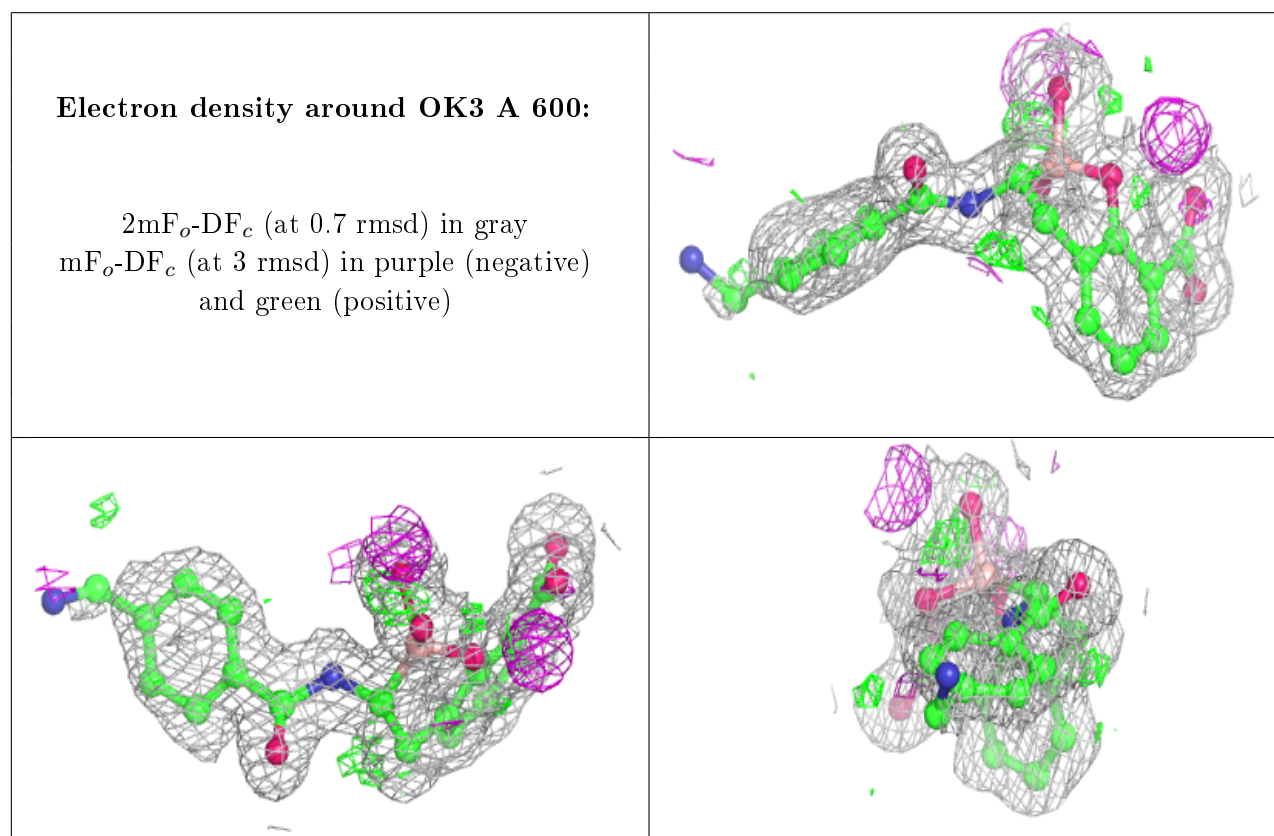
6.4 Ligands [i](#)

In the following table, the Atoms column lists the number of modelled atoms in the group and the number defined in the chemical component dictionary. The B-factors column lists the minimum,

median, 95th percentile and maximum values of B factors of atoms in the group. The column labelled 'Q< 0.9' lists the number of atoms with occupancy less than 0.9.

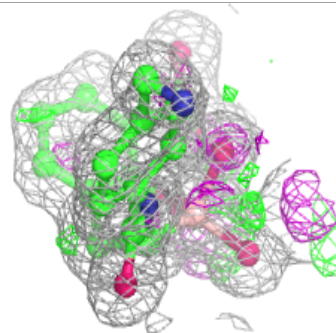
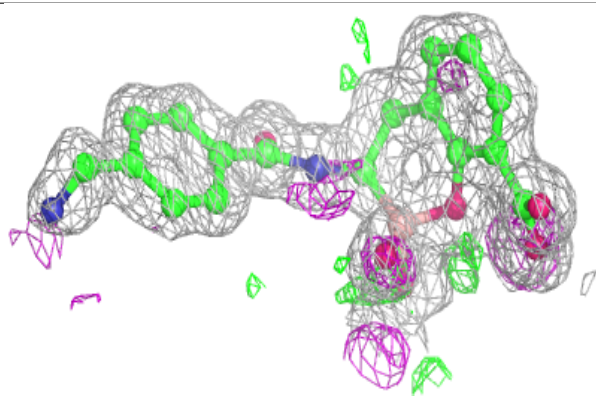
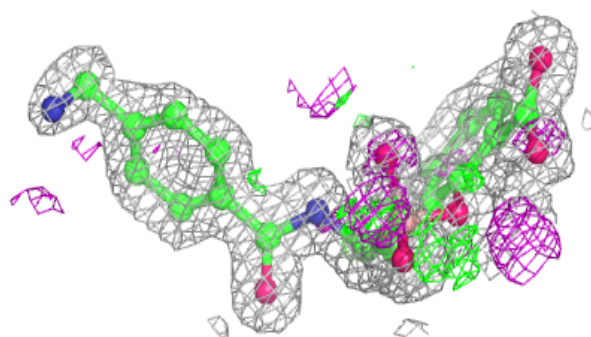
Mol	Type	Chain	Res	Atoms	RSCC	RSR	B-factors(\AA^2)	Q<0.9
5	DMS	A	700	4/4	0.84	0.29	16,17,21,31	0
2	FMT	A	400	3/3	0.91	0.13	20,20,22,23	0
2	FMT	A	401	3/3	0.93	0.09	22,22,22,23	0
4	OK3	A	600	26/26	0.94	0.10	11,16,36,51	0
2	FMT	B	401	3/3	0.95	0.11	17,17,17,18	0
4	OK3	B	600	26/26	0.95	0.08	9,14,28,35	0
2	FMT	B	400	3/3	0.97	0.05	16,16,17,18	0
3	ZN	B	501	1/1	1.00	0.02	12,12,12,12	0
3	ZN	A	502	1/1	1.00	0.03	17,17,17,17	0
3	ZN	B	500	1/1	1.00	0.04	12,12,12,12	0
3	ZN	A	500	1/1	1.00	0.02	11,11,11,11	0
3	ZN	A	501	1/1	1.00	0.03	13,13,13,13	0
3	ZN	B	502	1/1	1.00	0.01	14,14,14,14	0

The following is a graphical depiction of the model fit to experimental electron density of all instances of the Ligand of Interest. In addition, ligands with molecular weight > 250 and outliers as shown on the geometry validation Tables will also be included. Each fit is shown from different orientation to approximate a three-dimensional view.



Electron density around OK3 B 600:

$2mF_o-DF_c$ (at 0.7 rmsd) in gray
 mF_o-DF_c (at 3 rmsd) in purple (negative)
and green (positive)



6.5 Other polymers [i](#)

There are no such residues in this entry.