



# wwPDB X-ray Structure Validation Summary Report ⓘ

May 21, 2020 – 02:09 am BST

PDB ID : 3FRK  
Title : X-ray structure of QdtB from *T. thermosaccharolyticum* in complex with a P  
LP:TDP-3-aminoquinovose aldimine  
Authors : Thoden, J.B.; Holden, H.M.  
Deposited on : 2009-01-08  
Resolution : 2.15 Å(reported)

This is a wwPDB X-ray Structure Validation Summary Report for a publicly released PDB entry.

We welcome your comments at [validation@mail.wwpdb.org](mailto:validation@mail.wwpdb.org)

A user guide is available at

<https://www.wwpdb.org/validation/2017/XrayValidationReportHelp>

with specific help available everywhere you see the ⓘ symbol.

---

The following versions of software and data (see [references ⓘ](#)) were used in the production of this report:

MolProbity : 4.02b-467  
Mogul : 1.8.5 (274361), CSD as541be (2020)  
Xtriage (Phenix) : 1.13  
EDS : 2.11  
buster-report : 1.1.7 (2018)  
Percentile statistics : 20191225.v01 (using entries in the PDB archive December 25th 2019)  
Refmac : 5.8.0158  
CCP4 : 7.0.044 (Gargrove)  
Ideal geometry (proteins) : Engh & Huber (2001)  
Ideal geometry (DNA, RNA) : Parkinson et al. (1996)  
Validation Pipeline (wwPDB-VP) : 2.11

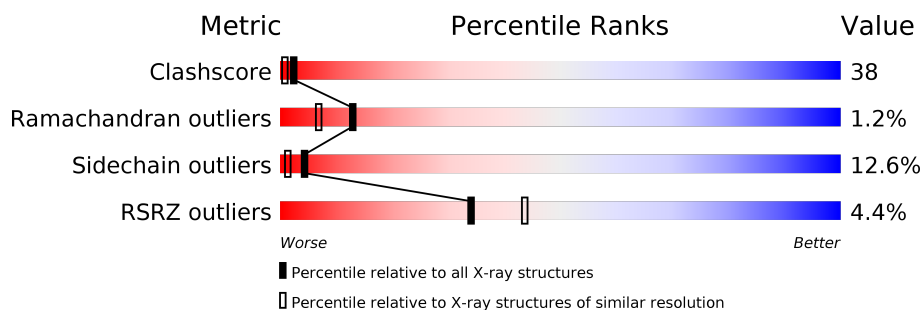
# 1 Overall quality at a glance

The following experimental techniques were used to determine the structure:

*X-RAY DIFFRACTION*

The reported resolution of this entry is 2.15 Å.

Percentile scores (ranging between 0-100) for global validation metrics of the entry are shown in the following graphic. The table shows the number of entries on which the scores are based.



Metric	Whole archive (#Entries)	Similar resolution (#Entries, resolution range(Å))
Clashscore	141614	1585 (2.16-2.16)
Ramachandran outliers	138981	1560 (2.16-2.16)
Sidechain outliers	138945	1559 (2.16-2.16)
RSRZ outliers	127900	1456 (2.16-2.16)

The table below summarises the geometric issues observed across the polymeric chains and their fit to the electron density. The red, orange, yellow and green segments on the lower bar indicate the fraction of residues that contain outliers for  $\geq 3$ , 2, 1 and 0 types of geometric quality criteria respectively. A grey segment represents the fraction of residues that are not modelled. The numeric value for each fraction is indicated below the corresponding segment, with a dot representing fractions  $\leq 5\%$ . The upper red bar (where present) indicates the fraction of residues that have poor fit to the electron density. The numeric value is given above the bar.

Mol	Chain	Length	Quality of chain
1	A	373	
1	B	373	

## 2 Entry composition

There are 3 unique types of molecules in this entry. The entry contains 6157 atoms, of which 0 are hydrogens and 0 are deuteriums.

In the tables below, the ZeroOcc column contains the number of atoms modelled with zero occupancy, the AltConf column contains the number of residues with at least one atom in alternate conformation and the Trace column contains the number of residues modelled with at most 2 atoms.

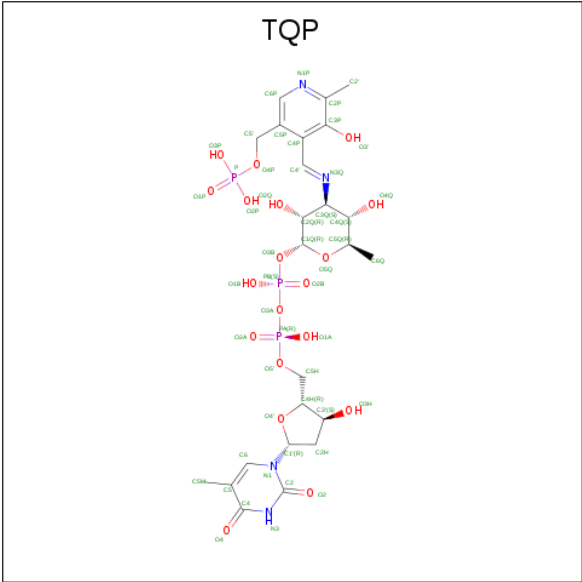
- Molecule 1 is a protein called QdtB.

Mol	Chain	Residues	Atoms					ZeroOcc	AltConf	Trace
1	A	365	Total	C	N	O	S	0	3	0
			2953	1917	483	545	8			
1	B	364	Total	C	N	O	S	0	1	0
			2924	1895	480	541	8			

There are 16 discrepancies between the modelled and reference sequences:

Chain	Residue	Modelled	Actual	Comment	Reference
A	366	LEU	-	EXPRESSION TAG	UNP Q6TFC4
A	367	GLU	-	EXPRESSION TAG	UNP Q6TFC4
A	368	HIS	-	EXPRESSION TAG	UNP Q6TFC4
A	369	HIS	-	EXPRESSION TAG	UNP Q6TFC4
A	370	HIS	-	EXPRESSION TAG	UNP Q6TFC4
A	371	HIS	-	EXPRESSION TAG	UNP Q6TFC4
A	372	HIS	-	EXPRESSION TAG	UNP Q6TFC4
A	373	HIS	-	EXPRESSION TAG	UNP Q6TFC4
B	366	LEU	-	EXPRESSION TAG	UNP Q6TFC4
B	367	GLU	-	EXPRESSION TAG	UNP Q6TFC4
B	368	HIS	-	EXPRESSION TAG	UNP Q6TFC4
B	369	HIS	-	EXPRESSION TAG	UNP Q6TFC4
B	370	HIS	-	EXPRESSION TAG	UNP Q6TFC4
B	371	HIS	-	EXPRESSION TAG	UNP Q6TFC4
B	372	HIS	-	EXPRESSION TAG	UNP Q6TFC4
B	373	HIS	-	EXPRESSION TAG	UNP Q6TFC4

- Molecule 2 is (2R,3R,4S,5S,6R)-3,5-dihydroxy-4-[(1E)-{3-hydroxy-2-methyl-5-[(phosphonoxy)methyl]pyridin-4-yl}methylidene]amino}-6-methyltetrahydro-2H-pyran-2-yl [(2R,3S,5R)-3-hydroxy-5-(5-methyl-2,4-dioxo-3,4-dihydropyrimidin-1(2H)-yl)tetrahydrofuran-2-yl]methyl dihydrogen diphosphate (three-letter code: TQP) (formula: C<sub>24</sub>H<sub>35</sub>N<sub>4</sub>O<sub>19</sub>P<sub>3</sub>).

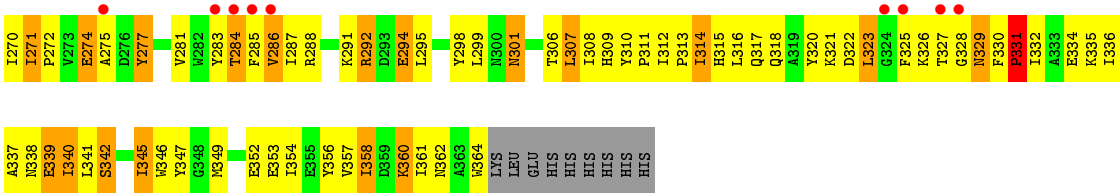


Mol	Chain	Residues	Atoms					ZeroOcc	AltConf
2	A	1	Total	C	N	O	P	0	0
			50	24	4	19	3		
2	B	1	Total	C	N	O	P	0	0
			50	24	4	19	3		

- Molecule 3 is water.

Mol	Chain	Residues	Atoms		ZeroOcc	AltConf
3	A	110	Total	O	0	0
			110	110		
3	B	70	Total	O	0	0
			70	70		





## 4 Data and refinement statistics

Property	Value	Source
Space group	P 61	Depositor
Cell constants a, b, c, $\alpha$ , $\beta$ , $\gamma$	109.10 Å   109.10 Å   177.90 Å 90.00°   90.00°   120.00°	Depositor
Resolution (Å)	30.00 – 2.15 27.85 – 2.00	Depositor EDS
% Data completeness (in resolution range)	93.7 (30.00-2.15) 9.1 (27.85-2.00)	Depositor EDS
$R_{merge}$	(Not available)	Depositor
$R_{sym}$	0.05	Depositor
$\langle I/\sigma(I) \rangle$	-	Xtrriage
Refinement program	TNT	Depositor
R, $R_{free}$	0.213   ,   0.269 0.217   ,   (Not available)	Depositor DCC
$R_{free}$ test set	No test flags present.	wwPDB-VP
Wilson B-factor (Å <sup>2</sup> )	(Not available)	Xtrriage
Anisotropy	(Not available)	Xtrriage
Bulk solvent $k_{sol}$ (e/Å <sup>3</sup> ), $B_{sol}$ (Å <sup>2</sup> )	0.28   ,   103.6	EDS
L-test for twinning <sup>1</sup>	$\langle  L  \rangle =$ (Not available), $\langle L^2 \rangle =$ (Not available)	Xtrriage
Estimated twinning fraction	No twinning to report.	Xtrriage
$F_o, F_c$ correlation	0.94	EDS
Total number of atoms	6157	wwPDB-VP
Average B, all atoms (Å <sup>2</sup> )	50.0	wwPDB-VP

Xtrriage's analysis on translational NCS is as follows: *(Not available)*

<sup>1</sup>Theoretical values of  $\langle |L| \rangle$ ,  $\langle L^2 \rangle$  for acentric reflections are 0.5, 0.333 respectively for untwinned datasets, and 0.375, 0.2 for perfectly twinned datasets.

## 5 Model quality ⓘ

### 5.1 Standard geometry ⓘ

Bond lengths and bond angles in the following residue types are not validated in this section: TQP

The Z score for a bond length (or angle) is the number of standard deviations the observed value is removed from the expected value. A bond length (or angle) with  $|Z| > 5$  is considered an outlier worth inspection. RMSZ is the root-mean-square of all Z scores of the bond lengths (or angles).

Mol	Chain	Bond lengths		Bond angles	
		RMSZ	$\# Z  > 5$	RMSZ	$\# Z  > 5$
1	A	0.69	0/3037	1.37	20/4101 (0.5%)
1	B	0.67	0/2997	1.34	20/4048 (0.5%)
All	All	0.68	0/6034	1.35	40/8149 (0.5%)

There are no bond length outliers.

The worst 5 of 40 bond angle outliers are listed below:

Mol	Chain	Res	Type	Atoms	Z	Observed(°)	Ideal(°)
1	B	330	PHE	C-N-CD	-11.13	96.11	120.60
1	A	13	ASP	CB-CG-OD2	9.63	126.96	118.30
1	B	239	LEU	CA-CB-CG	-9.07	94.44	115.30
1	A	165	LEU	CB-CG-CD2	-8.92	95.84	111.00
1	A	116	LEU	CB-CG-CD2	-7.83	97.69	111.00

There are no chirality outliers.

There are no planarity outliers.

### 5.2 Too-close contacts ⓘ

In the following table, the Non-H and H(model) columns list the number of non-hydrogen atoms and hydrogen atoms in the chain respectively. The H(added) column lists the number of hydrogen atoms added and optimized by MolProbity. The Clashes column lists the number of clashes within the asymmetric unit, whereas Symm-Clashes lists symmetry related clashes.

Mol	Chain	Non-H	H(model)	H(added)	Clashes	Symm-Clashes
1	A	2953	0	2931	174	0
1	B	2924	0	2904	277	0
2	A	50	0	30	4	0
2	B	50	0	30	4	0

*Continued on next page...*



*Continued from previous page...*

Mol	Chain	Non-H	H(model)	H(added)	Clashes	Symm-Clashes
3	A	110	0	0	6	0
3	B	70	0	0	3	0
All	All	6157	0	5895	449	0

The all-atom clashscore is defined as the number of clashes found per 1000 atoms (including hydrogen atoms). The all-atom clashscore for this structure is 38.

The worst 5 of 449 close contacts within the same asymmetric unit are listed below, sorted by their clash magnitude.

Atom-1	Atom-2	Interatomic distance (Å)	Clash overlap (Å)
1:B:113:ASP:HB3	1:B:116:LEU:HG	1.16	1.14
1:B:122:THR:HG22	1:B:124:LYS:H	1.08	1.11
1:A:114:PRO:HA	1:A:117:ILE:HD12	1.32	1.10
1:A:292:ARG:NH2	1:A:337:ALA:O	1.88	1.06
1:B:114:PRO:HA	1:B:117:ILE:HD12	1.31	1.06

There are no symmetry-related clashes.

## 5.3 Torsion angles [i](#)

### 5.3.1 Protein backbone [i](#)

In the following table, the Percentiles column shows the percent Ramachandran outliers of the chain as a percentile score with respect to all X-ray entries followed by that with respect to entries of similar resolution.

The Analysed column shows the number of residues for which the backbone conformation was analysed, and the total number of residues.

Mol	Chain	Analysed	Favoured	Allowed	Outliers	Percentiles	
1	A	366/373 (98%)	326 (89%)	36 (10%)	4 (1%)	14	8
1	B	363/373 (97%)	320 (88%)	38 (10%)	5 (1%)	11	5
All	All	729/746 (98%)	646 (89%)	74 (10%)	9 (1%)	13	7

5 of 9 Ramachandran outliers are listed below:

Mol	Chain	Res	Type
1	A	345	ILE
1	B	345	ILE

*Continued on next page...*

*Continued from previous page...*

Mol	Chain	Res	Type
1	A	149	LYS
1	B	7	SER
1	B	275	ALA

### 5.3.2 Protein sidechains ⓘ

In the following table, the Percentiles column shows the percent sidechain outliers of the chain as a percentile score with respect to all X-ray entries followed by that with respect to entries of similar resolution.

The Analysed column shows the number of residues for which the sidechain conformation was analysed, and the total number of residues.

Mol	Chain	Analysed	Rotameric	Outliers	Percentiles	
1	A	310/316 (98%)	279 (90%)	31 (10%)	7	4
1	B	306/316 (97%)	259 (85%)	47 (15%)	2	1
All	All	616/632 (98%)	538 (87%)	78 (13%)	4	1

5 of 78 residues with a non-rotameric sidechain are listed below:

Mol	Chain	Res	Type
1	B	59	ASN
1	B	123	GLU
1	B	339	GLU
1	B	69	LYS
1	B	115	SER

Some sidechains can be flipped to improve hydrogen bonding and reduce clashes. 5 of 9 such sidechains are listed below:

Mol	Chain	Res	Type
1	B	222	HIS
1	B	338	ASN
1	B	268	ASN
1	B	136	GLN
1	B	265	ASN

### 5.3.3 RNA ⓘ

There are no RNA molecules in this entry.

## 5.4 Non-standard residues in protein, DNA, RNA chains ⓘ

There are no non-standard protein/DNA/RNA residues in this entry.

## 5.5 Carbohydrates ⓘ

There are no carbohydrates in this entry.

## 5.6 Ligand geometry ⓘ

2 ligands are modelled in this entry.

In the following table, the Counts columns list the number of bonds (or angles) for which Mogul statistics could be retrieved, the number of bonds (or angles) that are observed in the model and the number of bonds (or angles) that are defined in the Chemical Component Dictionary. The Link column lists molecule types, if any, to which the group is linked. The Z score for a bond length (or angle) is the number of standard deviations the observed value is removed from the expected value. A bond length (or angle) with  $|Z| > 2$  is considered an outlier worth inspection. RMSZ is the root-mean-square of all Z scores of the bond lengths (or angles).

Mol	Type	Chain	Res	Link	Bond lengths			Bond angles		
					Counts	RMSZ	# $ Z  > 2$	Counts	RMSZ	# $ Z  > 2$
2	TQP	B	374	-	47,53,53	1.06	2 (4%)	61,81,81	1.99	14 (22%)
2	TQP	A	374	-	47,53,53	1.12	2 (4%)	61,81,81	2.18	12 (19%)

In the following table, the Chirals column lists the number of chiral outliers, the number of chiral centers analysed, the number of these observed in the model and the number defined in the Chemical Component Dictionary. Similar counts are reported in the Torsion and Rings columns. '-' means no outliers of that kind were identified.

Mol	Type	Chain	Res	Link	Chirals	Torsions	Rings
2	TQP	B	374	-	-	6/29/64/64	0/4/4/4
2	TQP	A	374	-	-	9/29/64/64	0/4/4/4

All (4) bond length outliers are listed below:

Mol	Chain	Res	Type	Atoms	Z	Observed(Å)	Ideal(Å)
2	B	374	TQP	PA-O2A	3.45	1.63	1.50
2	A	374	TQP	PA-O2A	3.36	1.62	1.50
2	B	374	TQP	PB-O2B	2.76	1.60	1.50
2	A	374	TQP	PB-O2B	2.16	1.58	1.50

The worst 5 of 26 bond angle outliers are listed below:

Mol	Chain	Res	Type	Atoms	Z	Observed(°)	Ideal(°)
2	A	374	TQP	C3Q-N3Q-C4'	7.40	131.12	117.99
2	A	374	TQP	O5'-C5H-C4H	6.80	132.39	108.99
2	B	374	TQP	C4-N3-C2	6.01	120.22	115.14
2	B	374	TQP	C4P-C4'-N3Q	-5.97	109.75	123.01
2	A	374	TQP	C4-N3-C2	5.34	119.65	115.14

There are no chirality outliers.

5 of 15 torsion outliers are listed below:

Mol	Chain	Res	Type	Atoms
2	B	374	TQP	C5H-O5'-PA-O2A
2	B	374	TQP	C4Q-C3Q-N3Q-C4'
2	A	374	TQP	C4H-C5H-O5'-PA
2	A	374	TQP	C5H-O5'-PA-O2A
2	A	374	TQP	C4Q-C3Q-N3Q-C4'

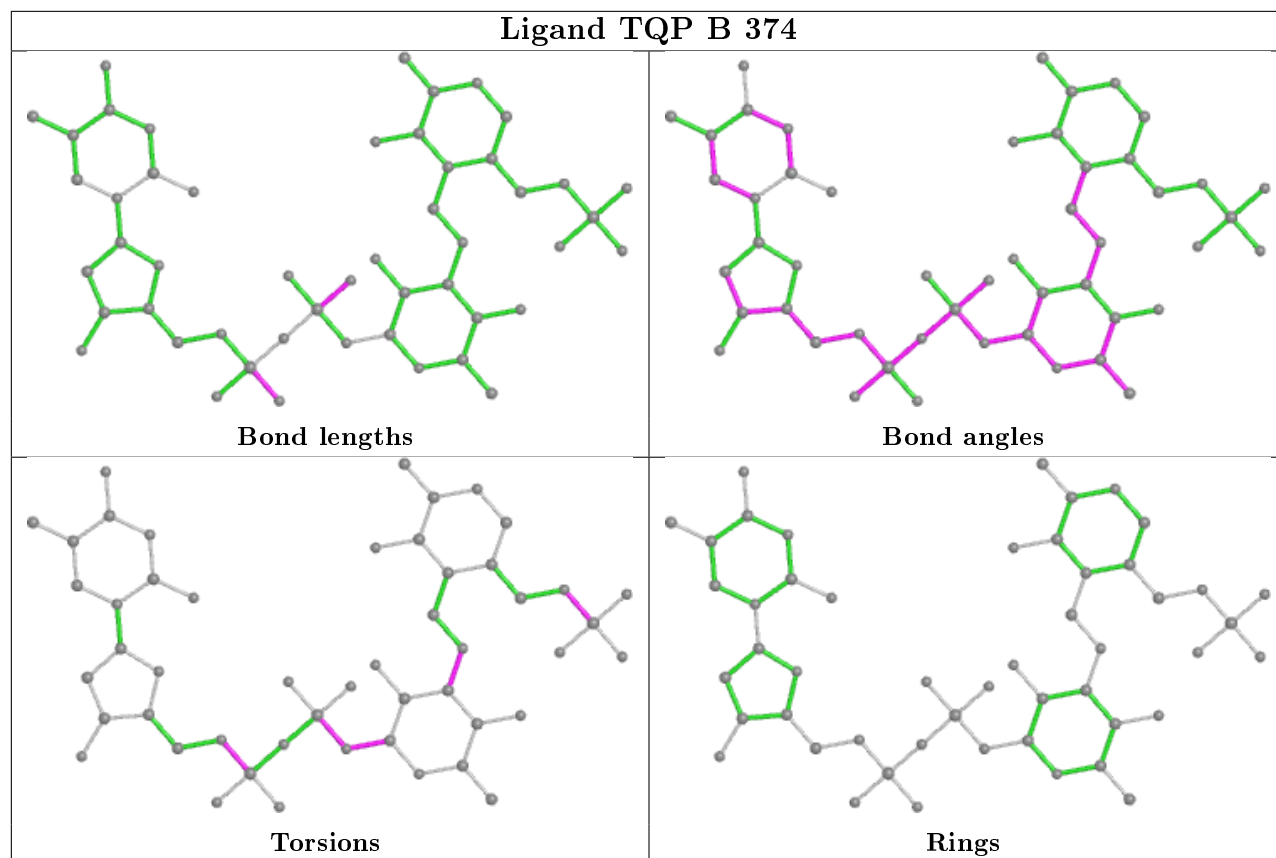
There are no ring outliers.

2 monomers are involved in 8 short contacts:

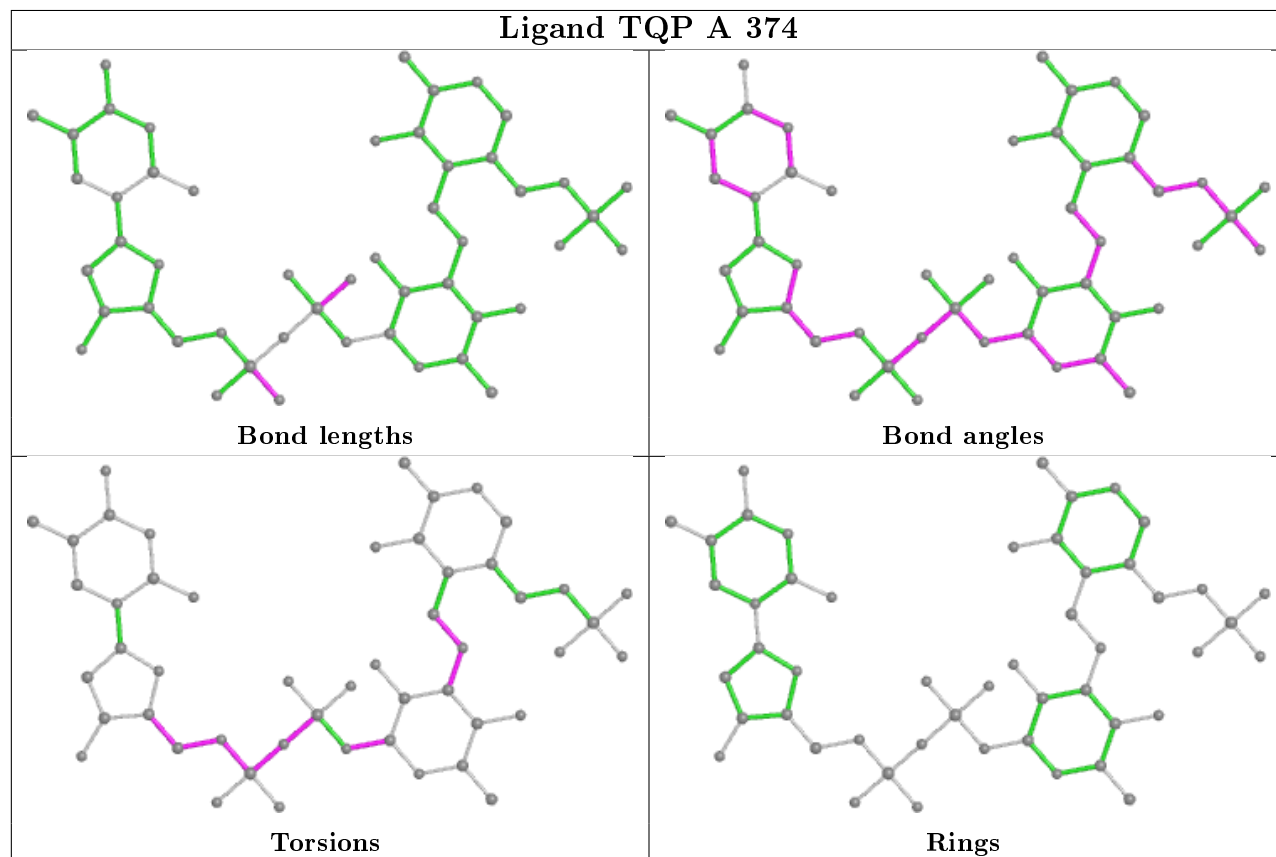
Mol	Chain	Res	Type	Clashes	Symm-Clashes
2	B	374	TQP	4	0
2	A	374	TQP	4	0

The following is a two-dimensional graphical depiction of Mogul quality analysis of bond lengths, bond angles, torsion angles, and ring geometry for all instances of the Ligand of Interest. In addition, ligands with molecular weight > 250 and outliers as shown on the validation Tables will also be included. For torsion angles, if less than 5% of the Mogul distribution of torsion angles is within 10 degrees of the torsion angle in question, then that torsion angle is considered an outlier. Any bond that is central to one or more torsion angles identified as an outlier by Mogul will be highlighted in the graph. For rings, the root-mean-square deviation (RMSD) between the ring in question and similar rings identified by Mogul is calculated over all ring torsion angles. If the average RMSD is greater than 60 degrees and the minimal RMSD between the ring in question and any Mogul-identified rings is also greater than 60 degrees, then that ring is considered an outlier. The outliers are highlighted in purple. The color gray indicates Mogul did not find sufficient equivalents in the CSD to analyse the geometry.

## Ligand TQP B 374



## Ligand TQP A 374



## 5.7 Other polymers [i](#)

There are no such residues in this entry.

## 5.8 Polymer linkage issues [i](#)

There are no chain breaks in this entry.

## 6 Fit of model and data [i](#)

### 6.1 Protein, DNA and RNA chains [i](#)

In the following table, the column labelled ‘#RSRZ> 2’ contains the number (and percentage) of RSRZ outliers, followed by percent RSRZ outliers for the chain as percentile scores relative to all X-ray entries and entries of similar resolution. The OWAB column contains the minimum, median, 95<sup>th</sup> percentile and maximum values of the occupancy-weighted average B-factor per residue. The column labelled ‘Q< 0.9’ lists the number of (and percentage) of residues with an average occupancy less than 0.9.

Mol	Chain	Analysed	<RSRZ>	#RSRZ>2	OWAB(Å <sup>2</sup> )	Q<0.9
1	A	365/373 (97%)	-0.18	16 (4%) 34 43	24, 44, 72, 88	0
1	B	364/373 (97%)	-0.05	16 (4%) 34 43	25, 52, 77, 97	0
All	All	729/746 (97%)	-0.12	32 (4%) 34 43	24, 48, 75, 97	0

The worst 5 of 32 RSRZ outliers are listed below:

Mol	Chain	Res	Type	RSRZ
1	A	17[A]	TYR	4.8
1	A	133	LEU	4.4
1	A	283	TYR	3.3
1	B	283	TYR	3.2
1	A	131	VAL	3.0

### 6.2 Non-standard residues in protein, DNA, RNA chains [i](#)

There are no non-standard protein/DNA/RNA residues in this entry.

### 6.3 Carbohydrates [i](#)

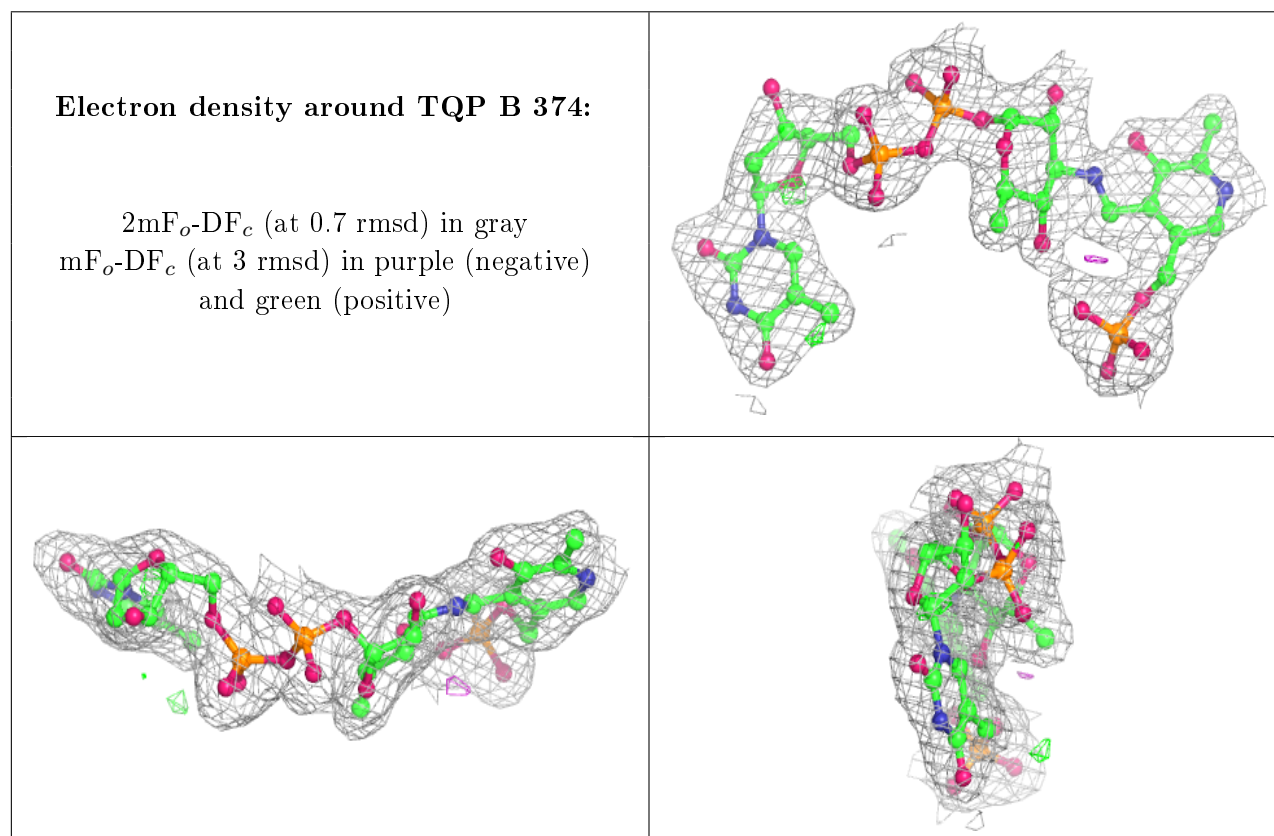
There are no carbohydrates in this entry.

### 6.4 Ligands [i](#)

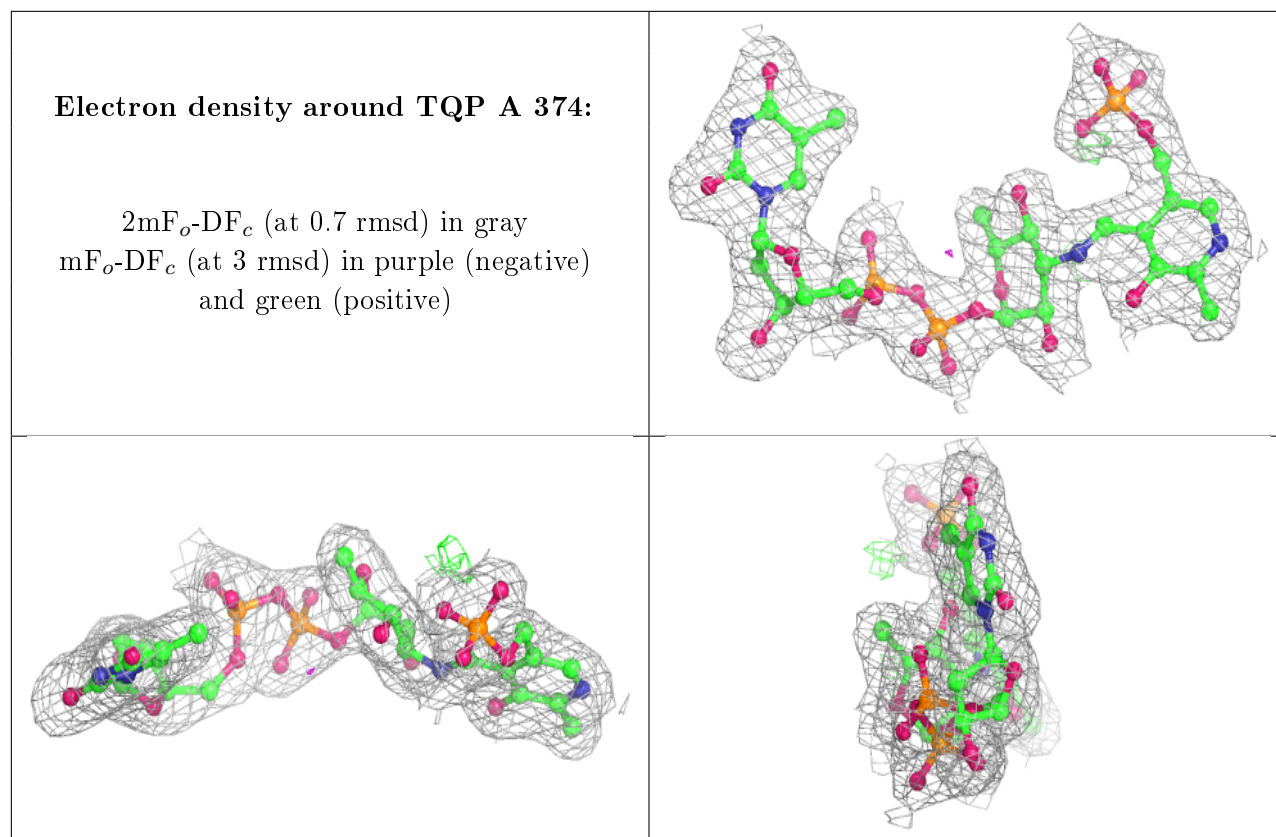
In the following table, the Atoms column lists the number of modelled atoms in the group and the number defined in the chemical component dictionary. The B-factors column lists the minimum, median, 95<sup>th</sup> percentile and maximum values of B factors of atoms in the group. The column labelled ‘Q< 0.9’ lists the number of atoms with occupancy less than 0.9.

Mol	Type	Chain	Res	Atoms	RSCC	RSR	B-factors( $\text{\AA}^2$ )	Q<0.9
2	TQP	B	374	50/50	0.97	0.12	21,48,100,100	0
2	TQP	A	374	50/50	0.98	0.11	18,36,72,86	0

The following is a graphical depiction of the model fit to experimental electron density of all instances of the Ligand of Interest. In addition, ligands with molecular weight > 250 and outliers as shown on the geometry validation Tables will also be included. Each fit is shown from different orientation to approximate a three-dimensional view.







## 6.5 Other polymers [i](#)

There are no such residues in this entry.