



Full wwPDB X-ray Structure Validation Report ⓘ

Jun 13, 2020 – 11:04 pm BST

PDB ID : 6FRM
Title : Crystal Structure of coenzyme F420H2 oxidase (FprA) co-crystallized with 10 mM Tb-Xo4
Authors : Engilberge, S.; Riobe, F.; Wagner, T.; Di Pietro, S.; Shima, S.; Girard, E.; Dumont, E.; Maury, O.
Deposited on : 2018-02-16
Resolution : 2.20 Å(reported)

This is a Full wwPDB X-ray Structure Validation Report for a publicly released PDB entry.

We welcome your comments at validation@mail.wwpdb.org

A user guide is available at

<https://www.wwpdb.org/validation/2017/XrayValidationReportHelp>

with specific help available everywhere you see the ⓘ symbol.

The following versions of software and data (see [references ⓘ](#)) were used in the production of this report:

MolProbity : 4.02b-467
Mogul : 1.8.5 (274361), CSD as541be (2020)
Xtriage (Phenix) : 1.13
EDS : 2.11
buster-report : 1.1.7 (2018)
Percentile statistics : 20191225.v01 (using entries in the PDB archive December 25th 2019)
Refmac : 5.8.0158
CCP4 : 7.0.044 (Gargrove)
Ideal geometry (proteins) : Engh & Huber (2001)
Ideal geometry (DNA, RNA) : Parkinson et al. (1996)
Validation Pipeline (wwPDB-VP) : 2.11

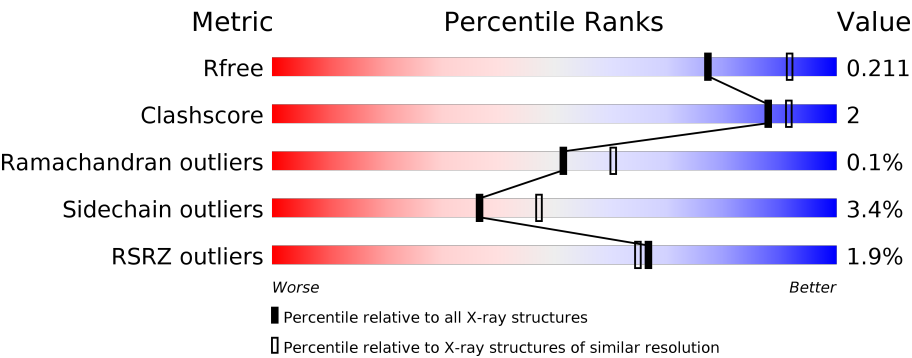
1 Overall quality at a glance i

The following experimental techniques were used to determine the structure:

X-RAY DIFFRACTION

The reported resolution of this entry is 2.20 Å.

Percentile scores (ranging between 0-100) for global validation metrics of the entry are shown in the following graphic. The table shows the number of entries on which the scores are based.



Metric	Whole archive (#Entries)	Similar resolution (#Entries, resolution range(Å))
R_{free}	130704	4898 (2.20-2.20)
Clashscore	141614	5594 (2.20-2.20)
Ramachandran outliers	138981	5503 (2.20-2.20)
Sidechain outliers	138945	5504 (2.20-2.20)
RSRZ outliers	127900	4800 (2.20-2.20)

The table below summarises the geometric issues observed across the polymeric chains and their fit to the electron density. The red, orange, yellow and green segments on the lower bar indicate the fraction of residues that contain outliers for ≥ 3 , 2, 1 and 0 types of geometric quality criteria respectively. A grey segment represents the fraction of residues that are not modelled. The numeric value for each fraction is indicated below the corresponding segment, with a dot representing fractions $\leq 5\%$. The upper red bar (where present) indicates the fraction of residues that have poor fit to the electron density. The numeric value is given above the bar.

Mol	Chain	Length	Quality of chain
1	A	410	<div><div>%</div><div><div></div><div>91%</div><div>6%</div><div>.</div></div></div>
1	B	410	<div><div>2%</div><div><div></div><div>89%</div><div>8%</div><div>.</div></div></div>
1	C	410	<div><div>%</div><div><div></div><div>93%</div><div>6%</div><div>.</div></div></div>
1	D	410	<div><div>3%</div><div><div></div><div>90%</div><div>8%</div><div>.</div></div></div>
1	E	410	<div><div>%</div><div><div></div><div>91%</div><div>6%</div><div>.</div></div></div>
1	F	410	<div><div>2%</div><div><div></div><div>89%</div><div>8%</div><div>.</div></div></div>

Continued on next page...

Continued from previous page...

Mol	Chain	Length	Quality of chain
1	G	410	<div><div></div><div>3%</div><div>92%</div><div>8%</div></div>
1	H	410	<div><div></div><div>2%</div><div>94%</div><div>6%</div></div>

2 Entry composition

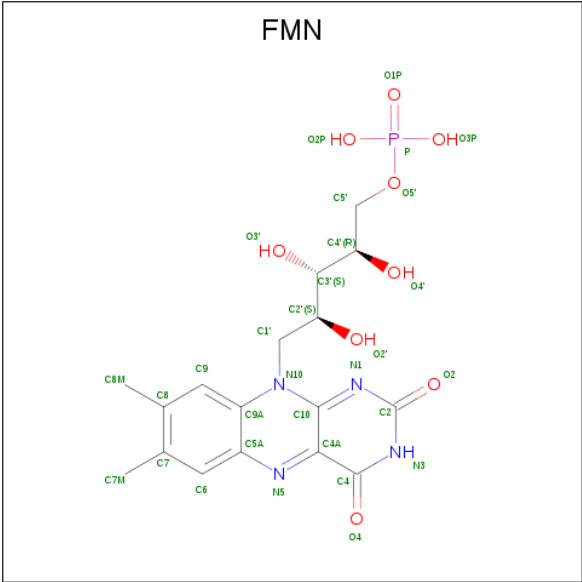
There are 7 unique types of molecules in this entry. The entry contains 27500 atoms, of which 0 are hydrogens and 0 are deuteriums.

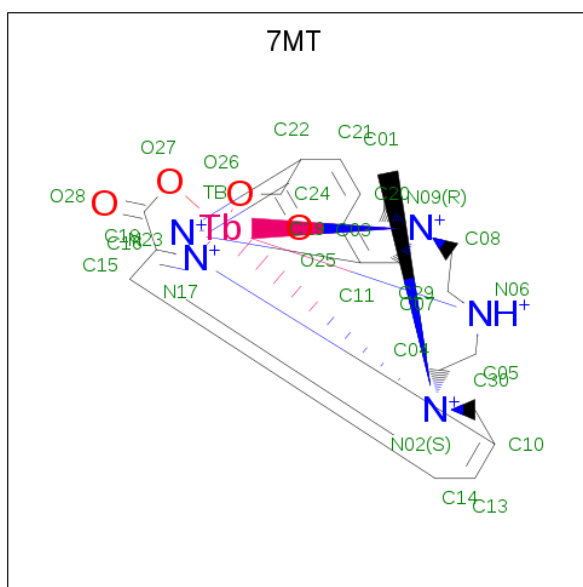
In the tables below, the ZeroOcc column contains the number of atoms modelled with zero occupancy, the AltConf column contains the number of residues with at least one atom in alternate conformation and the Trace column contains the number of residues modelled with at most 2 atoms.

- Molecule 1 is a protein called Coenzyme F420H2 oxidase (FprA).

Mol	Chain	Residues	Atoms					ZeroOcc	AltConf	Trace
1	A	402	Total	C	N	O	S	0	1	0
			3185	2060	513	592	20			
1	B	400	Total	C	N	O	S	0	1	0
			3177	2056	512	589	20			
1	C	408	Total	C	N	O	S	0	2	0
			3244	2101	523	600	20			
1	D	403	Total	C	N	O	S	0	1	0
			3192	2063	514	595	20			
1	E	397	Total	C	N	O	S	0	2	0
			3154	2039	509	586	20			
1	F	395	Total	C	N	O	S	0	2	0
			3139	2029	508	582	20			
1	G	408	Total	C	N	O	S	0	1	0
			3239	2098	522	599	20			
1	H	409	Total	C	N	O	S	0	1	0
			3246	2102	523	601	20			

- Molecule 2 is FLAVIN MONONUCLEOTIDE (three-letter code: FMN) (formula: C₁₇H₂₁N₄O₉P).





Mol	Chain	Residues	Atoms					ZeroOcc	AltConf
3	A	1	Total 30	C 20	N 5	O 4	Tb 1	0	0
3	F	1	Total 30	C 20	N 5	O 4	Tb 1	0	0

- Molecule 4 is TERBIUM(III) ION (three-letter code: TB) (formula: Tb).

Mol	Chain	Residues	Atoms	ZeroOcc	AltConf
4	G	3	Total 3 Tb 3	0	0
4	D	3	Total 3 Tb 3	0	0
4	E	1	Total 1 Tb 1	0	0
4	H	2	Total 2 Tb 2	0	0
4	B	1	Total 1 Tb 1	0	0
4	C	2	Total 2 Tb 2	0	0
4	A	1	Total 1 Tb 1	0	0
4	F	1	Total 1 Tb 1	0	0

- Molecule 5 is CHLORIDE ION (three-letter code: CL) (formula: Cl).

Mol	Chain	Residues	Atoms	ZeroOcc	AltConf
5	G	1	Total Cl 1 1	0	0
5	D	2	Total Cl 2 2	0	0
5	E	3	Total Cl 3 3	0	0
5	H	2	Total Cl 2 2	0	0
5	B	2	Total Cl 2 2	0	0
5	C	2	Total Cl 2 2	0	0
5	A	2	Total Cl 2 2	0	0
5	F	3	Total Cl 3 3	0	0

- Molecule 6 is FE (III) ION (three-letter code: FE) (formula: Fe).

Mol	Chain	Residues	Atoms	ZeroOcc	AltConf
6	H	1	Total Fe 1 1	0	0
6	G	1	Total Fe 1 1	0	0
6	D	1	Total Fe 1 1	0	0
6	C	1	Total Fe 1 1	0	0

- Molecule 7 is water.

Mol	Chain	Residues	Atoms	ZeroOcc	AltConf
7	A	175	Total O 175 175	0	0
7	B	206	Total O 206 206	0	0
7	C	190	Total O 190 190	0	0
7	D	157	Total O 157 157	0	0
7	E	192	Total O 192 192	0	0
7	F	232	Total O 232 232	0	0

Continued on next page...

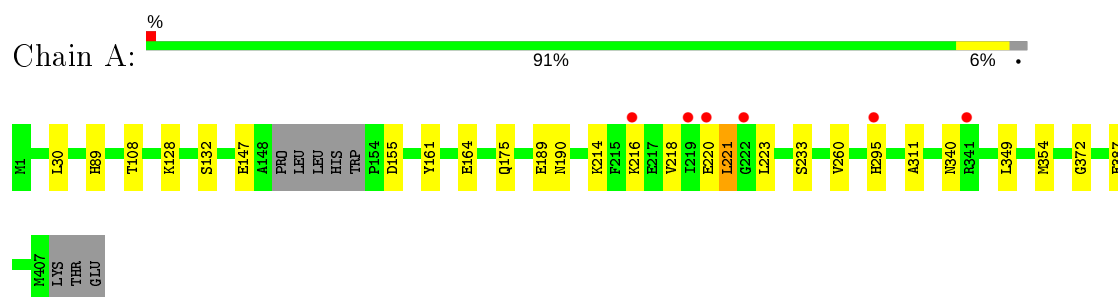
Continued from previous page...

Mol	Chain	Residues	Atoms		ZeroOcc	AltConf
7	G	208	Total 208	O 208	0	0
7	H	221	Total 221	O 221	0	0

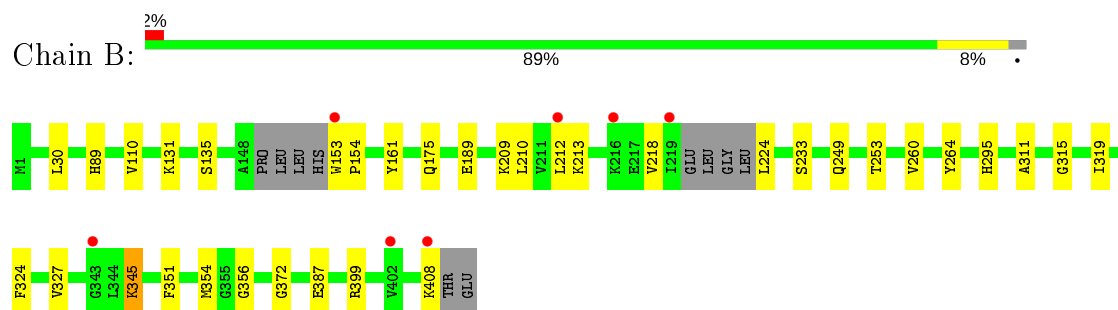
3 Residue-property plots [i](#)

These plots are drawn for all protein, RNA and DNA chains in the entry. The first graphic for a chain summarises the proportions of the various outlier classes displayed in the second graphic. The second graphic shows the sequence view annotated by issues in geometry and electron density. Residues are color-coded according to the number of geometric quality criteria for which they contain at least one outlier: green = 0, yellow = 1, orange = 2 and red = 3 or more. A red dot above a residue indicates a poor fit to the electron density ($RSRZ > 2$). Stretches of 2 or more consecutive residues without any outlier are shown as a green connector. Residues present in the sample, but not in the model, are shown in grey.

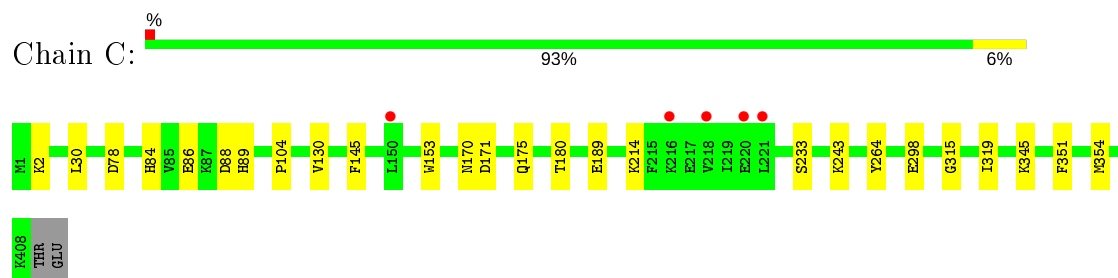
- Molecule 1: Coenzyme F420H2 oxidase (FprA)

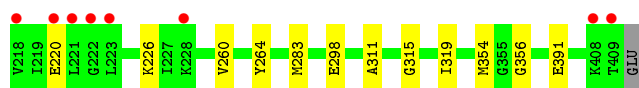


- Molecule 1: Coenzyme F420H2 oxidase (FprA)

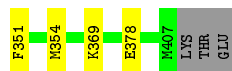
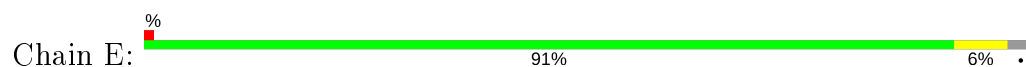


- Molecule 1: Coenzyme F420H2 oxidase (FprA)

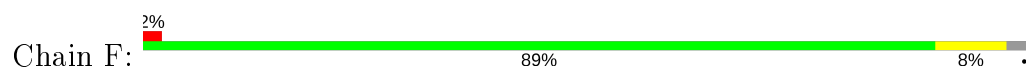




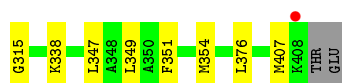
- Molecule 1: Coenzyme F420H2 oxidase (FprA)



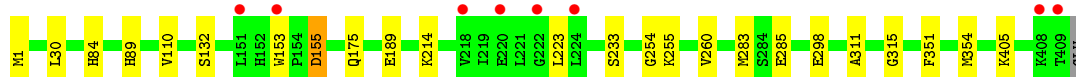
- Molecule 1: Coenzyme F420H2 oxidase (FprA)



- Molecule 1: Coenzyme F420H2 oxidase (FprA)



- Molecule 1: Coenzyme F420H2 oxidase (FprA)



4 Data and refinement statistics

Property	Value	Source
Space group	P 1 21 1	Depositor
Cell constants a, b, c, α , β , γ	84.17Å 147.88Å 146.06Å 90.00° 90.40° 90.00°	Depositor
Resolution (Å)	48.69 – 2.20 48.69 – 2.20	Depositor EDS
% Data completeness (in resolution range)	98.8 (48.69-2.20) 98.7 (48.69-2.20)	Depositor EDS
R_{merge}	(Not available)	Depositor
R_{sym}	(Not available)	Depositor
$\langle I/\sigma(I) \rangle$ ¹	1.65 (at 2.20Å)	Xtriage
Refinement program	BUSTER 2.10.3	Depositor
R, R_{free}	0.177 , 0.209 0.179 , 0.211	Depositor DCC
R_{free} test set	8913 reflections (4.99%)	wwPDB-VP
Wilson B-factor (Å ²)	38.7	Xtriage
Anisotropy	0.504	Xtriage
Bulk solvent k_{sol} (e/Å ³), B_{sol} (Å ²)	0.33 , 47.6	EDS
L-test for twinning ²	$\langle L \rangle = 0.48$, $\langle L^2 \rangle = 0.31$	Xtriage
Estimated twinning fraction	0.016 for -h,-l,-k 0.004 for -h,l,k 0.067 for h,-k,-l	Xtriage
F_o, F_c correlation	0.96	EDS
Total number of atoms	27500	wwPDB-VP
Average B, all atoms (Å ²)	52.0	wwPDB-VP

Xtriage's analysis on translational NCS is as follows: *The largest off-origin peak in the Patterson function is 2.91% of the height of the origin peak. No significant pseudotranslation is detected.*

¹Intensities estimated from amplitudes.

²Theoretical values of $\langle |L| \rangle$, $\langle L^2 \rangle$ for acentric reflections are 0.5, 0.333 respectively for untwinned datasets, and 0.375, 0.2 for perfectly twinned datasets.

5 Model quality [i](#)

5.1 Standard geometry [i](#)

Bond lengths and bond angles in the following residue types are not validated in this section: FMN, 7MT, TB, FE, CL

The Z score for a bond length (or angle) is the number of standard deviations the observed value is removed from the expected value. A bond length (or angle) with $|Z| > 5$ is considered an outlier worth inspection. RMSZ is the root-mean-square of all Z scores of the bond lengths (or angles).

Mol	Chain	Bond lengths		Bond angles	
		RMSZ	# Z >5	RMSZ	# Z >5
1	A	0.48	0/3261	0.70	0/4397
1	B	0.49	0/3253	0.70	0/4386
1	C	0.48	0/3327	0.70	0/4491
1	D	0.47	0/3266	0.70	0/4403
1	E	0.50	0/3231	0.70	0/4355
1	F	0.50	0/3216	0.72	0/4333
1	G	0.49	0/3319	0.71	0/4480
1	H	0.50	0/3326	0.70	0/4490
All	All	0.49	0/26199	0.70	0/35335

There are no bond length outliers.

There are no bond angle outliers.

There are no chirality outliers.

There are no planarity outliers.

5.2 Too-close contacts [i](#)

In the following table, the Non-H and H(model) columns list the number of non-hydrogen atoms and hydrogen atoms in the chain respectively. The H(added) column lists the number of hydrogen atoms added and optimized by MolProbity. The Clashes column lists the number of clashes within the asymmetric unit, whereas Symm-Clashes lists symmetry related clashes.

Mol	Chain	Non-H	H(model)	H(added)	Clashes	Symm-Clashes
1	A	3185	0	3179	6	0
1	B	3177	0	3168	13	0
1	C	3244	0	3243	19	0
1	D	3192	0	3190	16	0
1	E	3154	0	3145	11	0

Continued on next page...

Continued from previous page...

Mol	Chain	Non-H	H(model)	H(added)	Clashes	Symm-Clashes
1	F	3139	0	3132	11	0
1	G	3239	0	3237	15	0
1	H	3246	0	3244	15	0
2	A	31	0	19	0	0
2	B	31	0	19	4	0
2	C	31	0	19	1	0
2	D	31	0	19	2	0
2	E	31	0	19	1	0
2	F	31	0	19	2	0
2	G	31	0	19	0	0
2	H	31	0	19	0	0
3	A	30	0	0	0	0
3	F	30	0	0	0	0
4	A	1	0	0	0	0
4	B	1	0	0	0	0
4	C	2	0	0	0	0
4	D	3	0	0	0	0
4	E	1	0	0	0	0
4	F	1	0	0	0	0
4	G	3	0	0	0	0
4	H	2	0	0	0	0
5	A	2	0	0	0	0
5	B	2	0	0	1	0
5	C	2	0	0	0	0
5	D	2	0	0	0	0
5	E	3	0	0	0	0
5	F	3	0	0	1	0
5	G	1	0	0	0	0
5	H	2	0	0	0	0
6	C	1	0	0	0	0
6	D	1	0	0	0	0
6	G	1	0	0	0	0
6	H	1	0	0	0	0
7	A	175	0	0	0	0
7	B	206	0	0	1	0
7	C	190	0	0	0	0
7	D	157	0	0	1	0
7	E	192	0	0	3	0
7	F	232	0	0	3	0
7	G	208	0	0	1	0
7	H	221	0	0	2	0
All	All	27500	0	25690	102	0

The all-atom clashscore is defined as the number of clashes found per 1000 atoms (including hydrogen atoms). The all-atom clashscore for this structure is 2.

All (102) close contacts within the same asymmetric unit are listed below, sorted by their clash magnitude.

Atom-1	Atom-2	Interatomic distance (Å)	Clash overlap (Å)
1:A:340:ASN:HB3	1:A:372:GLY:HA3	1.53	0.88
1:C:86:GLU:HG2	1:C:88:ASP:OD1	1.82	0.80
1:B:212:LEU:HD21	1:B:253:THR:HG23	1.69	0.73
1:C:130:VAL:HG21	1:C:145:PHE:CD2	2.25	0.71
1:D:142:THR:HG22	1:D:162:ALA:HB3	1.72	0.71
1:B:110:VAL:HG11	1:B:154:PRO:HB2	1.78	0.66
1:H:285:GLU:HB3	1:H:405:LYS:NZ	2.11	0.66
1:C:89:HIS:CE1	1:C:233:SER:HB2	2.32	0.65
1:B:399:ARG:NH1	5:B:503:CL:CL	2.69	0.63
1:H:84:HIS:HE1	1:H:153:TRP:HB2	1.64	0.62
1:D:130:VAL:HG21	1:D:145:PHE:CD2	2.37	0.60
1:A:218:VAL:HA	1:A:221:LEU:HD23	1.84	0.60
1:G:89:HIS:CE1	1:G:233:SER:HB2	2.36	0.59
1:C:84:HIS:HE1	1:C:153:TRP:HB2	1.68	0.59
1:H:84:HIS:CE1	1:H:153:TRP:HB2	2.36	0.59
1:G:86:GLU:HG2	1:G:88:ASP:OD1	2.03	0.58
1:C:84:HIS:CE1	1:C:153:TRP:HB2	2.38	0.58
1:A:218:VAL:HG13	1:A:223:LEU:HB3	1.86	0.58
1:E:30:LEU:HD12	1:E:176:HIS:HB3	1.86	0.57
1:D:97:HIS:HD2	7:D:1503:HOH:O	1.86	0.57
1:G:310:LYS:HD3	1:G:407:MET:HG3	1.85	0.57
1:C:189:GLU:HG3	1:C:243:LYS:NZ	2.20	0.56
1:E:170:ASN:HB3	7:E:648:HOH:O	2.04	0.56
1:H:110:VAL:HG12	7:H:748:HOH:O	2.05	0.55
1:B:212:LEU:HD21	1:B:253:THR:CG2	2.36	0.55
1:G:97:HIS:HD2	7:G:614:HOH:O	1.89	0.54
2:B:501:FMN:H9	1:C:153:TRP:CZ2	2.43	0.54
1:H:285:GLU:HB3	1:H:405:LYS:HZ2	1.71	0.54
1:C:189:GLU:HG3	1:C:243:LYS:HZ3	1.73	0.53
1:F:345:LYS:HG3	1:F:372:GLY:O	2.10	0.52
1:D:110:VAL:HG13	1:D:155:ASP:HA	1.91	0.52
1:A:89:HIS:CE1	1:A:233:SER:HB2	2.45	0.52
1:C:170:ASN:ND2	1:C:171:ASP:H	2.07	0.51
1:H:254:GLY:HA2	7:H:613:HOH:O	2.11	0.49
2:B:501:FMN:H9	1:C:153:TRP:HZ2	1.77	0.49
1:D:8:ILE:HD12	1:D:183:PHE:CZ	2.48	0.48
1:A:260:VAL:HG22	1:A:311:ALA:HB3	1.95	0.48

Continued on next page...

Continued from previous page...

Atom-1	Atom-2	Interatomic distance (Å)	Clash overlap (Å)
1:F:268:HIS:HE1	1:G:86:GLU:OE2	1.96	0.48
1:D:216:LYS:O	1:D:220:GLU:HG2	2.13	0.48
1:F:399:ARG:NH1	5:F:504:CL:CL	2.84	0.48
1:F:260:VAL:HG22	1:F:311:ALA:HB3	1.95	0.48
7:F:611:HOH:O	1:G:338:LYS:HE3	2.14	0.47
1:E:260:VAL:HG22	1:E:311:ALA:HB3	1.95	0.47
1:H:260:VAL:HG22	1:H:311:ALA:HB3	1.96	0.46
1:G:260:VAL:HG22	1:G:311:ALA:HB3	1.97	0.46
1:B:260:VAL:HG22	1:B:311:ALA:HB3	1.97	0.45
1:D:260:VAL:HG22	1:D:311:ALA:HB3	1.97	0.45
2:F:502:FMN:H9	1:G:153:TRP:CZ2	2.52	0.45
1:B:345:LYS:HD2	1:B:372:GLY:O	2.17	0.45
1:E:8:ILE:HD12	1:E:229:MET:HE3	1.99	0.45
1:C:84:HIS:HE1	1:C:153:TRP:CG	2.35	0.45
1:D:42:GLY:HA3	1:D:138:LEU:HB3	1.98	0.44
1:H:84:HIS:HE1	1:H:153:TRP:CG	2.36	0.44
1:C:170:ASN:HD22	1:C:171:ASP:H	1.66	0.43
1:H:285:GLU:HB3	1:H:405:LYS:HZ1	1.79	0.43
1:C:180:THR:HG22	1:D:283:MET:SD	2.59	0.43
1:H:110:VAL:HG13	1:H:155:ASP:HA	1.99	0.43
1:A:108:THR:HG22	1:A:147:GLU:HG2	2.00	0.43
1:H:84:HIS:HE1	1:H:153:TRP:CB	2.31	0.43
1:G:315:GLY:HA2	1:G:351:PHE:O	2.19	0.43
1:C:315:GLY:HA2	1:C:351:PHE:O	2.17	0.43
1:B:315:GLY:HA2	1:B:351:PHE:O	2.19	0.43
1:C:2:LYS:HD2	1:D:391:GLU:HG3	2.01	0.43
1:B:356:GLY:N	2:B:501:FMN:O2	2.50	0.43
1:E:97:HIS:HD2	7:E:602:HOH:O	2.02	0.43
1:F:8:ILE:HD12	1:F:229:MET:HE3	2.01	0.43
1:H:315:GLY:HA2	1:H:351:PHE:O	2.19	0.42
1:E:89:HIS:CE1	1:E:233:SER:HB2	2.54	0.42
2:F:502:FMN:H9	1:G:153:TRP:HZ2	1.84	0.42
1:C:78:ASP:O	1:C:104:PRO:HD2	2.18	0.42
1:H:89:HIS:CE1	1:H:233:SER:HB2	2.54	0.42
1:B:324:PHE:O	1:B:327:VAL:HG22	2.19	0.42
1:E:8:ILE:HD12	1:E:229:MET:CE	2.50	0.42
1:F:315:GLY:HA2	1:F:351:PHE:O	2.19	0.42
1:E:369:LYS:HG2	7:E:722:HOH:O	2.17	0.42
1:B:110:VAL:HG12	7:B:654:HOH:O	2.18	0.42
1:B:89:HIS:CE1	1:B:233:SER:HB2	2.55	0.41
1:C:319:ILE:HG13	2:C:501:FMN:C6	2.50	0.41

Continued on next page...

Continued from previous page...

Atom-1	Atom-2	Interatomic distance (Å)	Clash overlap (Å)
1:D:319:ILE:HG13	2:D:501:FMN:C6	2.50	0.41
1:E:116:VAL:HG13	1:E:123:LYS:HG3	2.01	0.41
1:E:108:THR:HG22	1:E:147:GLU:HG3	2.01	0.41
1:B:319:ILE:HG13	2:B:501:FMN:C6	2.50	0.41
1:D:142:THR:CG2	1:D:162:ALA:HB3	2.43	0.41
1:D:59:GLN:O	1:D:63:ARG:HG3	2.19	0.41
1:G:110:VAL:HG13	1:G:155:ASP:HA	2.03	0.41
1:G:166:ILE:HG23	1:G:229:MET:HE2	2.03	0.41
1:C:84:HIS:HE1	1:C:153:TRP:CB	2.33	0.41
1:D:356:GLY:N	2:D:501:FMN:O2	2.51	0.41
2:E:501:FMN:H9	1:H:153:TRP:CZ2	2.56	0.41
1:C:264:TYR:HA	1:C:315:GLY:O	2.19	0.41
1:F:38:TYR:CZ	1:F:231:ALA:HB1	2.56	0.41
1:F:335:LYS:HD2	7:F:806:HOH:O	2.20	0.41
1:B:264:TYR:HA	1:B:315:GLY:O	2.21	0.40
1:F:264:TYR:HA	1:F:315:GLY:O	2.21	0.40
1:G:313:LEU:HG	1:G:349:LEU:HB2	2.03	0.40
1:D:25:TYR:O	1:D:28:TYR:HB3	2.21	0.40
1:D:264:TYR:HA	1:D:315:GLY:O	2.21	0.40
1:E:315:GLY:HA2	1:E:351:PHE:O	2.20	0.40
1:F:347:LEU:HD13	1:F:376:LEU:HD11	2.04	0.40
1:G:347:LEU:HD13	1:G:376:LEU:HD11	2.02	0.40
1:G:180:THR:HG22	1:H:283:MET:SD	2.62	0.40
1:F:369:LYS:HG2	7:F:732:HOH:O	2.20	0.40

There are no symmetry-related clashes.

5.3 Torsion angles [i](#)

5.3.1 Protein backbone [i](#)

In the following table, the Percentiles column shows the percent Ramachandran outliers of the chain as a percentile score with respect to all X-ray entries followed by that with respect to entries of similar resolution.

The Analysed column shows the number of residues for which the backbone conformation was analysed, and the total number of residues.

Mol	Chain	Analysed	Favoured	Allowed	Outliers	Percentiles	
1	A	399/410 (97%)	390 (98%)	9 (2%)	0	100	100

Continued on next page...

Continued from previous page...

Mol	Chain	Analysed	Favoured	Allowed	Outliers	Percentiles	
1	B	395/410 (96%)	385 (98%)	10 (2%)	0	100	100
1	C	408/410 (100%)	398 (98%)	10 (2%)	0	100	100
1	D	400/410 (98%)	391 (98%)	9 (2%)	0	100	100
1	E	393/410 (96%)	384 (98%)	9 (2%)	0	100	100
1	F	391/410 (95%)	381 (97%)	8 (2%)	2 (0%)	29	31
1	G	407/410 (99%)	396 (97%)	11 (3%)	0	100	100
1	H	408/410 (100%)	399 (98%)	9 (2%)	0	100	100
All	All	3201/3280 (98%)	3124 (98%)	75 (2%)	2 (0%)	51	60

All (2) Ramachandran outliers are listed below:

Mol	Chain	Res	Type
1	F	132	SER
1	F	51	ASN

5.3.2 Protein sidechains ⓘ

In the following table, the Percentiles column shows the percent sidechain outliers of the chain as a percentile score with respect to all X-ray entries followed by that with respect to entries of similar resolution.

The Analysed column shows the number of residues for which the sidechain conformation was analysed, and the total number of residues.

Mol	Chain	Analysed	Rotameric	Outliers	Percentiles	
1	A	341/348 (98%)	323 (95%)	18 (5%)	22	27
1	B	340/348 (98%)	322 (95%)	18 (5%)	22	27
1	C	348/348 (100%)	342 (98%)	6 (2%)	60	74
1	D	342/348 (98%)	331 (97%)	11 (3%)	39	50
1	E	338/348 (97%)	330 (98%)	8 (2%)	49	62
1	F	336/348 (97%)	321 (96%)	15 (4%)	27	34
1	G	347/348 (100%)	338 (97%)	9 (3%)	46	58
1	H	348/348 (100%)	337 (97%)	11 (3%)	39	50
All	All	2740/2784 (98%)	2644 (96%)	96 (4%)	37	46

All (96) residues with a non-rotameric sidechain are listed below:

Mol	Chain	Res	Type
1	A	30	LEU
1	A	128	LYS
1	A	132	SER
1	A	155	ASP
1	A	161	TYR
1	A	164	GLU
1	A	175	GLN
1	A	189	GLU
1	A	190	ASN
1	A	214	LYS
1	A	216	LYS
1	A	220	GLU
1	A	221	LEU
1	A	295[A]	HIS
1	A	295[B]	HIS
1	A	349	LEU
1	A	354	MET
1	A	387	GLU
1	B	30	LEU
1	B	131	LYS
1	B	135	SER
1	B	153	TRP
1	B	161	TYR
1	B	175	GLN
1	B	189	GLU
1	B	209	LYS
1	B	210	LEU
1	B	213	LYS
1	B	218	VAL
1	B	224	LEU
1	B	249	GLN
1	B	295	HIS
1	B	345	LYS
1	B	354	MET
1	B	387	GLU
1	B	408	LYS
1	C	30	LEU
1	C	175	GLN
1	C	214	LYS
1	C	298	GLU
1	C	345	LYS
1	C	354	MET
1	D	30	LEU

Continued on next page...

Continued from previous page...

Mol	Chain	Res	Type
1	D	74	GLU
1	D	132	SER
1	D	142	THR
1	D	146	LEU
1	D	175	GLN
1	D	189	GLU
1	D	213	LYS
1	D	226	LYS
1	D	298	GLU
1	D	354	MET
1	E	30	LEU
1	E	133	LEU
1	E	135	SER
1	E	155	ASP
1	E	161	TYR
1	E	189	GLU
1	E	354	MET
1	E	378	GLU
1	F	30	LEU
1	F	86	GLU
1	F	128	LYS
1	F	131	LYS
1	F	161	TYR
1	F	175	GLN
1	F	189	GLU
1	F	216	LYS
1	F	225	GLU
1	F	295[A]	HIS
1	F	295[B]	HIS
1	F	341	ARG
1	F	344	LEU
1	F	345	LYS
1	F	354	MET
1	G	10	ASP
1	G	30	LEU
1	G	132	SER
1	G	161	TYR
1	G	175	GLN
1	G	189	GLU
1	G	214	LYS
1	G	298	GLU
1	G	354	MET

Continued on next page...

Continued from previous page...

Mol	Chain	Res	Type
1	H	1	MET
1	H	30	LEU
1	H	132	SER
1	H	155	ASP
1	H	175	GLN
1	H	189	GLU
1	H	214	LYS
1	H	223	LEU
1	H	255	LYS
1	H	298	GLU
1	H	354	MET

Some sidechains can be flipped to improve hydrogen bonding and reduce clashes. All (8) such sidechains are listed below:

Mol	Chain	Res	Type
1	B	84	HIS
1	B	249	GLN
1	C	84	HIS
1	C	170	ASN
1	F	268	HIS
1	G	84	HIS
1	H	84	HIS
1	H	89	HIS

5.3.3 RNA [i](#)

There are no RNA molecules in this entry.

5.4 Non-standard residues in protein, DNA, RNA chains [i](#)

There are no non-standard protein/DNA/RNA residues in this entry.

5.5 Carbohydrates [i](#)

There are no carbohydrates in this entry.

5.6 Ligand geometry [i](#)

Of 45 ligands modelled in this entry, 35 are monoatomic - leaving 10 for Mogul analysis.

In the following table, the Counts columns list the number of bonds (or angles) for which Mogul statistics could be retrieved, the number of bonds (or angles) that are observed in the model and the number of bonds (or angles) that are defined in the Chemical Component Dictionary. The Link column lists molecule types, if any, to which the group is linked. The Z score for a bond length (or angle) is the number of standard deviations the observed value is removed from the expected value. A bond length (or angle) with $|Z| > 2$ is considered an outlier worth inspection. RMSZ is the root-mean-square of all Z scores of the bond lengths (or angles).

Mol	Type	Chain	Res	Link	Bond lengths			Bond angles		
					Counts	RMSZ	# Z > 2	Counts	RMSZ	# Z > 2
2	FMN	B	501	-	31,33,33	2.25	5 (16%)	40,50,50	2.13	9 (22%)
2	FMN	D	501	-	31,33,33	2.26	5 (16%)	40,50,50	2.12	9 (22%)
3	7MT	A	502	1	21,38,38	1.43	2 (9%)	20,76,76	1.64	4 (20%)
2	FMN	F	502	-	31,33,33	2.25	5 (16%)	40,50,50	2.12	9 (22%)
3	7MT	F	501	1	21,38,38	1.42	2 (9%)	20,76,76	1.64	4 (20%)
2	FMN	A	501	-	31,33,33	2.26	5 (16%)	40,50,50	2.12	9 (22%)
2	FMN	C	501	-	31,33,33	2.25	5 (16%)	40,50,50	2.12	9 (22%)
2	FMN	E	501	-	31,33,33	2.25	5 (16%)	40,50,50	2.13	9 (22%)
2	FMN	G	501	-	31,33,33	2.24	5 (16%)	40,50,50	2.12	9 (22%)
2	FMN	H	501	-	31,33,33	2.24	5 (16%)	40,50,50	2.12	9 (22%)

In the following table, the Chirals column lists the number of chiral outliers, the number of chiral centers analysed, the number of these observed in the model and the number defined in the Chemical Component Dictionary. Similar counts are reported in the Torsion and Rings columns. '-' means no outliers of that kind were identified.

Mol	Type	Chain	Res	Link	Chirals	Torsions	Rings
2	FMN	B	501	-	-	6/18/18/18	0/3/3/3
2	FMN	D	501	-	-	4/18/18/18	0/3/3/3
2	FMN	F	502	-	-	6/18/18/18	0/3/3/3
2	FMN	A	501	-	-	3/18/18/18	0/3/3/3
2	FMN	C	501	-	-	4/18/18/18	0/3/3/3
2	FMN	E	501	-	-	5/18/18/18	0/3/3/3
2	FMN	G	501	-	-	2/18/18/18	0/3/3/3
2	FMN	H	501	-	-	5/18/18/18	0/3/3/3

All (44) bond length outliers are listed below:

Mol	Chain	Res	Type	Atoms	Z	Observed(Å)	Ideal(Å)
2	D	501	FMN	C4A-C10	9.73	1.48	1.38

Continued on next page...

Continued from previous page...

Mol	Chain	Res	Type	Atoms	Z	Observed(Å)	Ideal(Å)
2	A	501	FMN	C4A-C10	9.69	1.48	1.38
2	C	501	FMN	C4A-C10	9.68	1.48	1.38
2	E	501	FMN	C4A-C10	9.67	1.48	1.38
2	F	502	FMN	C4A-C10	9.65	1.48	1.38
2	B	501	FMN	C4A-C10	9.62	1.48	1.38
2	H	501	FMN	C4A-C10	9.58	1.48	1.38
2	G	501	FMN	C4A-C10	9.57	1.48	1.38
2	B	501	FMN	C4-C4A	4.31	1.48	1.41
2	G	501	FMN	C4-C4A	4.30	1.48	1.41
2	A	501	FMN	C4-C4A	4.30	1.48	1.41
2	D	501	FMN	C4-C4A	4.30	1.48	1.41
2	C	501	FMN	C4-C4A	4.29	1.48	1.41
2	F	502	FMN	C4-C4A	4.29	1.48	1.41
2	H	501	FMN	C4-C4A	4.28	1.48	1.41
2	E	501	FMN	C4-C4A	4.27	1.48	1.41
3	A	502	7MT	C30-C10	3.89	1.55	1.51
3	F	501	7MT	C30-C10	3.86	1.55	1.51
3	A	502	7MT	C29-C11	3.60	1.55	1.51
2	E	501	FMN	C9A-C5A	3.55	1.49	1.42
2	D	501	FMN	C9A-C5A	3.54	1.49	1.42
2	B	501	FMN	C9A-C5A	3.54	1.49	1.42
2	A	501	FMN	C9A-C5A	3.53	1.49	1.42
2	F	502	FMN	C9A-C5A	3.53	1.49	1.42
3	F	501	7MT	C29-C11	3.53	1.55	1.51
2	G	501	FMN	C9A-C5A	3.52	1.49	1.42
2	C	501	FMN	C9A-C5A	3.52	1.49	1.42
2	H	501	FMN	C9A-C5A	3.49	1.49	1.42
2	G	501	FMN	C8-C7	3.33	1.49	1.40
2	H	501	FMN	C8-C7	3.33	1.49	1.40
2	D	501	FMN	C8-C7	3.32	1.49	1.40
2	C	501	FMN	C8-C7	3.31	1.49	1.40
2	B	501	FMN	C8-C7	3.31	1.49	1.40
2	A	501	FMN	C8-C7	3.31	1.49	1.40
2	F	502	FMN	C8-C7	3.29	1.49	1.40
2	E	501	FMN	C8-C7	3.29	1.49	1.40
2	A	501	FMN	C9A-N10	2.08	1.41	1.38
2	G	501	FMN	C9A-N10	2.08	1.41	1.38
2	B	501	FMN	C9A-N10	2.08	1.41	1.38
2	C	501	FMN	C9A-N10	2.06	1.41	1.38
2	D	501	FMN	C9A-N10	2.05	1.41	1.38
2	H	501	FMN	C9A-N10	2.04	1.41	1.38
2	F	502	FMN	C9A-N10	2.03	1.41	1.38

Continued on next page...

Continued from previous page...

Mol	Chain	Res	Type	Atoms	Z	Observed(Å)	Ideal(Å)
2	E	501	FMN	C9A-N10	2.02	1.41	1.38

All (80) bond angle outliers are listed below:

Mol	Chain	Res	Type	Atoms	Z	Observed(°)	Ideal(°)
2	C	501	FMN	C4-N3-C2	8.50	122.32	115.14
2	E	501	FMN	C4-N3-C2	8.47	122.29	115.14
2	B	501	FMN	C4-N3-C2	8.47	122.29	115.14
2	A	501	FMN	C4-N3-C2	8.47	122.29	115.14
2	F	502	FMN	C4-N3-C2	8.46	122.29	115.14
2	G	501	FMN	C4-N3-C2	8.46	122.29	115.14
2	D	501	FMN	C4-N3-C2	8.44	122.26	115.14
2	H	501	FMN	C4-N3-C2	8.40	122.23	115.14
2	D	501	FMN	C4-C4A-C10	-5.12	116.56	119.95
2	B	501	FMN	C4-C4A-C10	-5.09	116.58	119.95
2	H	501	FMN	C4-C4A-C10	-5.07	116.59	119.95
2	C	501	FMN	C4-C4A-C10	-5.06	116.60	119.95
2	E	501	FMN	C4-C4A-C10	-5.05	116.61	119.95
2	G	501	FMN	C4-C4A-C10	-5.03	116.62	119.95
2	F	502	FMN	C4-C4A-C10	-5.02	116.63	119.95
2	A	501	FMN	C4-C4A-C10	-5.00	116.64	119.95
2	H	501	FMN	C4A-N5-C5A	3.98	120.75	116.77
2	B	501	FMN	C4A-N5-C5A	3.97	120.74	116.77
2	G	501	FMN	C4A-N5-C5A	3.96	120.73	116.77
2	E	501	FMN	C4A-N5-C5A	3.96	120.73	116.77
2	D	501	FMN	C4A-N5-C5A	3.95	120.72	116.77
2	A	501	FMN	C4A-N5-C5A	3.95	120.72	116.77
2	C	501	FMN	C4A-N5-C5A	3.92	120.69	116.77
2	F	502	FMN	C4A-N5-C5A	3.90	120.67	116.77
2	C	501	FMN	C4A-C4-N3	-3.68	118.40	123.43
2	A	501	FMN	C4A-C4-N3	-3.67	118.41	123.43
2	G	501	FMN	C4A-C4-N3	-3.66	118.42	123.43
2	F	502	FMN	C4A-C4-N3	-3.66	118.43	123.43
2	E	501	FMN	C4A-C4-N3	-3.66	118.43	123.43
2	B	501	FMN	C4A-C4-N3	-3.65	118.44	123.43
2	H	501	FMN	C4A-C4-N3	-3.63	118.47	123.43
2	D	501	FMN	C4A-C4-N3	-3.63	118.47	123.43
2	E	501	FMN	C1'-N10-C9A	3.26	120.86	118.29
2	F	502	FMN	C1'-N10-C9A	3.24	120.84	118.29
2	H	501	FMN	C1'-N10-C9A	3.19	120.80	118.29
2	B	501	FMN	C1'-N10-C9A	3.18	120.80	118.29
2	G	501	FMN	C1'-N10-C9A	3.16	120.78	118.29

Continued on next page...

Continued from previous page...

Mol	Chain	Res	Type	Atoms	Z	Observed(°)	Ideal(°)
2	D	501	FMN	C1'-N10-C9A	3.14	120.76	118.29
2	A	501	FMN	C1'-N10-C9A	3.13	120.76	118.29
2	C	501	FMN	C1'-N10-C9A	3.13	120.76	118.29
2	B	501	FMN	C4-C4A-N5	3.10	122.14	118.60
2	H	501	FMN	C4-C4A-N5	3.08	122.12	118.60
2	D	501	FMN	C4-C4A-N5	3.08	122.12	118.60
2	E	501	FMN	C4-C4A-N5	3.07	122.11	118.60
2	C	501	FMN	C4-C4A-N5	3.06	122.10	118.60
2	G	501	FMN	C4-C4A-N5	3.05	122.08	118.60
2	F	502	FMN	C4-C4A-N5	3.04	122.07	118.60
2	A	501	FMN	C4-C4A-N5	3.03	122.06	118.60
3	F	501	7MT	O27-C18-O28	-2.95	119.97	125.24
3	A	502	7MT	O27-C18-O28	-2.94	120.00	125.24
3	A	502	7MT	O26-C24-O25	-2.94	120.00	125.24
3	F	501	7MT	O27-C18-C16	2.92	120.05	115.78
3	F	501	7MT	O26-C24-O25	-2.91	120.06	125.24
3	A	502	7MT	O27-C18-C16	2.89	120.00	115.78
3	A	502	7MT	O26-C24-C22	2.89	120.00	115.78
3	F	501	7MT	O26-C24-C22	2.88	119.98	115.78
2	H	501	FMN	C9A-N10-C10	-2.70	118.37	121.91
2	H	501	FMN	C1'-N10-C10	2.70	120.83	118.41
2	B	501	FMN	C1'-N10-C10	2.69	120.82	118.41
2	B	501	FMN	C9A-N10-C10	-2.69	118.39	121.91
2	G	501	FMN	C1'-N10-C10	2.69	120.82	118.41
2	C	501	FMN	C1'-N10-C10	2.69	120.81	118.41
2	A	501	FMN	C1'-N10-C10	2.67	120.80	118.41
2	G	501	FMN	C9A-N10-C10	-2.67	118.41	121.91
2	E	501	FMN	C9A-N10-C10	-2.67	118.41	121.91
2	F	502	FMN	C9A-N10-C10	-2.67	118.41	121.91
2	C	501	FMN	C9A-N10-C10	-2.66	118.43	121.91
2	A	501	FMN	C9A-N10-C10	-2.65	118.44	121.91
2	D	501	FMN	C1'-N10-C10	2.63	120.77	118.41
2	D	501	FMN	C9A-N10-C10	-2.63	118.47	121.91
2	F	502	FMN	C1'-N10-C10	2.61	120.74	118.41
2	E	501	FMN	C1'-N10-C10	2.59	120.73	118.41
2	H	501	FMN	C5A-C9A-N10	2.59	119.59	117.72
2	E	501	FMN	C5A-C9A-N10	2.54	119.56	117.72
2	G	501	FMN	C5A-C9A-N10	2.52	119.54	117.72
2	D	501	FMN	C5A-C9A-N10	2.49	119.52	117.72
2	C	501	FMN	C5A-C9A-N10	2.49	119.52	117.72
2	F	502	FMN	C5A-C9A-N10	2.48	119.52	117.72
2	A	501	FMN	C5A-C9A-N10	2.48	119.51	117.72

Continued on next page...

Continued from previous page...

Mol	Chain	Res	Type	Atoms	Z	Observed(°)	Ideal(°)
2	B	501	FMN	C5A-C9A-N10	2.48	119.51	117.72

There are no chirality outliers.

All (35) torsion outliers are listed below:

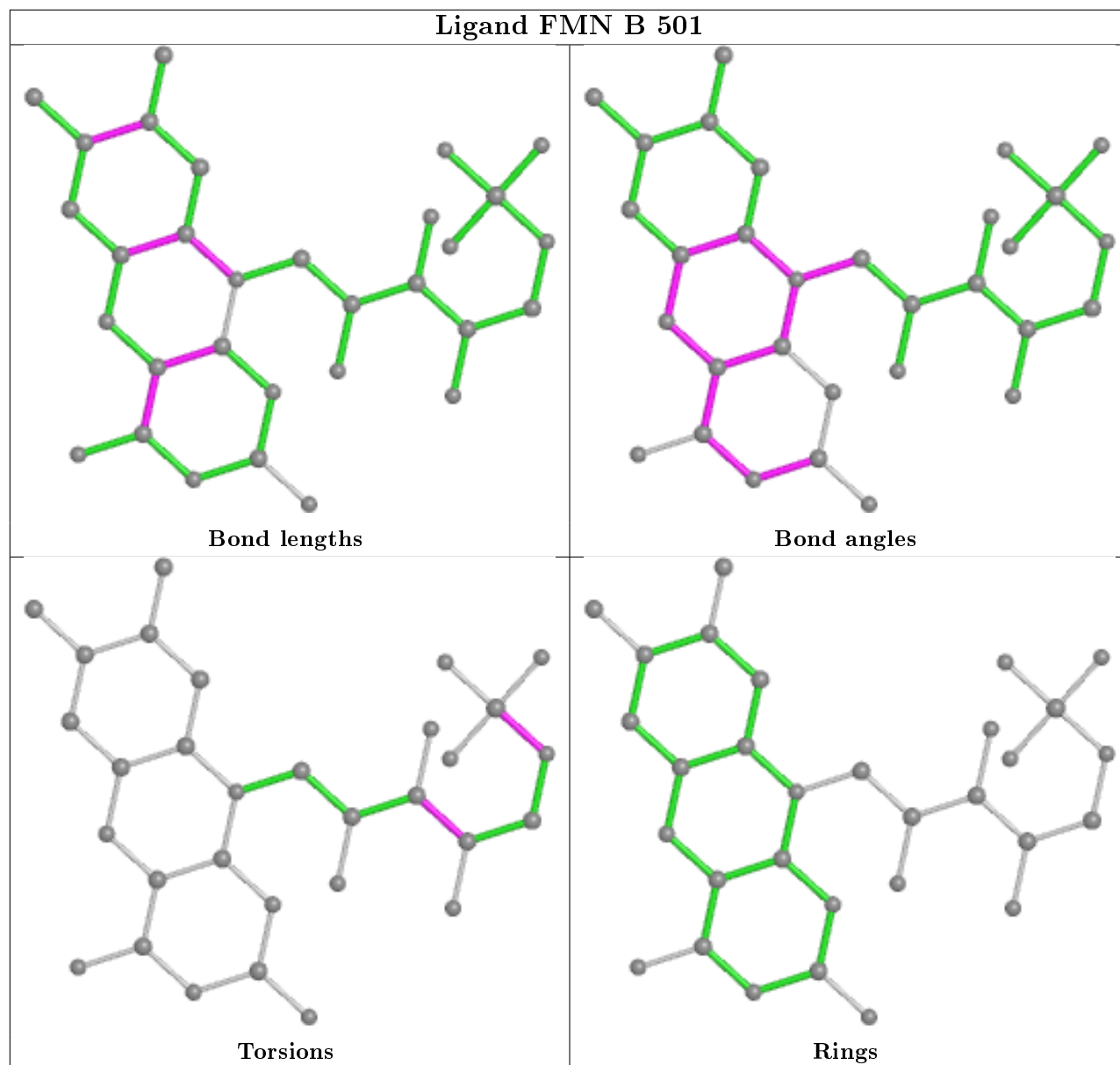
Mol	Chain	Res	Type	Atoms
2	B	501	FMN	C5'-O5'-P-O1P
2	F	502	FMN	C5'-O5'-P-O1P
2	H	501	FMN	C5'-O5'-P-O1P
2	E	501	FMN	C5'-O5'-P-O1P
2	C	501	FMN	C5'-O5'-P-O1P
2	B	501	FMN	C2'-C3'-C4'-O4'
2	F	502	FMN	C2'-C3'-C4'-O4'
2	B	501	FMN	O3'-C3'-C4'-O4'
2	D	501	FMN	C2'-C3'-C4'-O4'
2	E	501	FMN	C2'-C3'-C4'-O4'
2	A	501	FMN	C2'-C3'-C4'-O4'
2	H	501	FMN	C2'-C3'-C4'-O4'
2	B	501	FMN	C2'-C3'-C4'-C5'
2	F	502	FMN	C2'-C3'-C4'-C5'
2	E	501	FMN	C2'-C3'-C4'-C5'
2	D	501	FMN	C2'-C3'-C4'-C5'
2	F	502	FMN	O3'-C3'-C4'-O4'
2	A	501	FMN	C2'-C3'-C4'-C5'
2	H	501	FMN	C2'-C3'-C4'-C5'
2	B	501	FMN	C5'-O5'-P-O2P
2	D	501	FMN	O3'-C3'-C4'-O4'
2	C	501	FMN	C2'-C3'-C4'-O4'
2	A	501	FMN	O3'-C3'-C4'-O4'
2	H	501	FMN	O3'-C3'-C4'-O4'
2	E	501	FMN	O3'-C3'-C4'-O4'
2	G	501	FMN	C2'-C3'-C4'-O4'
2	B	501	FMN	O3'-C3'-C4'-C5'
2	C	501	FMN	O3'-C3'-C4'-O4'
2	F	502	FMN	C5'-O5'-P-O2P
2	H	501	FMN	C5'-O5'-P-O2P
2	E	501	FMN	C5'-O5'-P-O2P
2	C	501	FMN	C5'-O5'-P-O2P
2	F	502	FMN	O3'-C3'-C4'-C5'
2	G	501	FMN	O3'-C3'-C4'-O4'
2	D	501	FMN	O3'-C3'-C4'-C5'

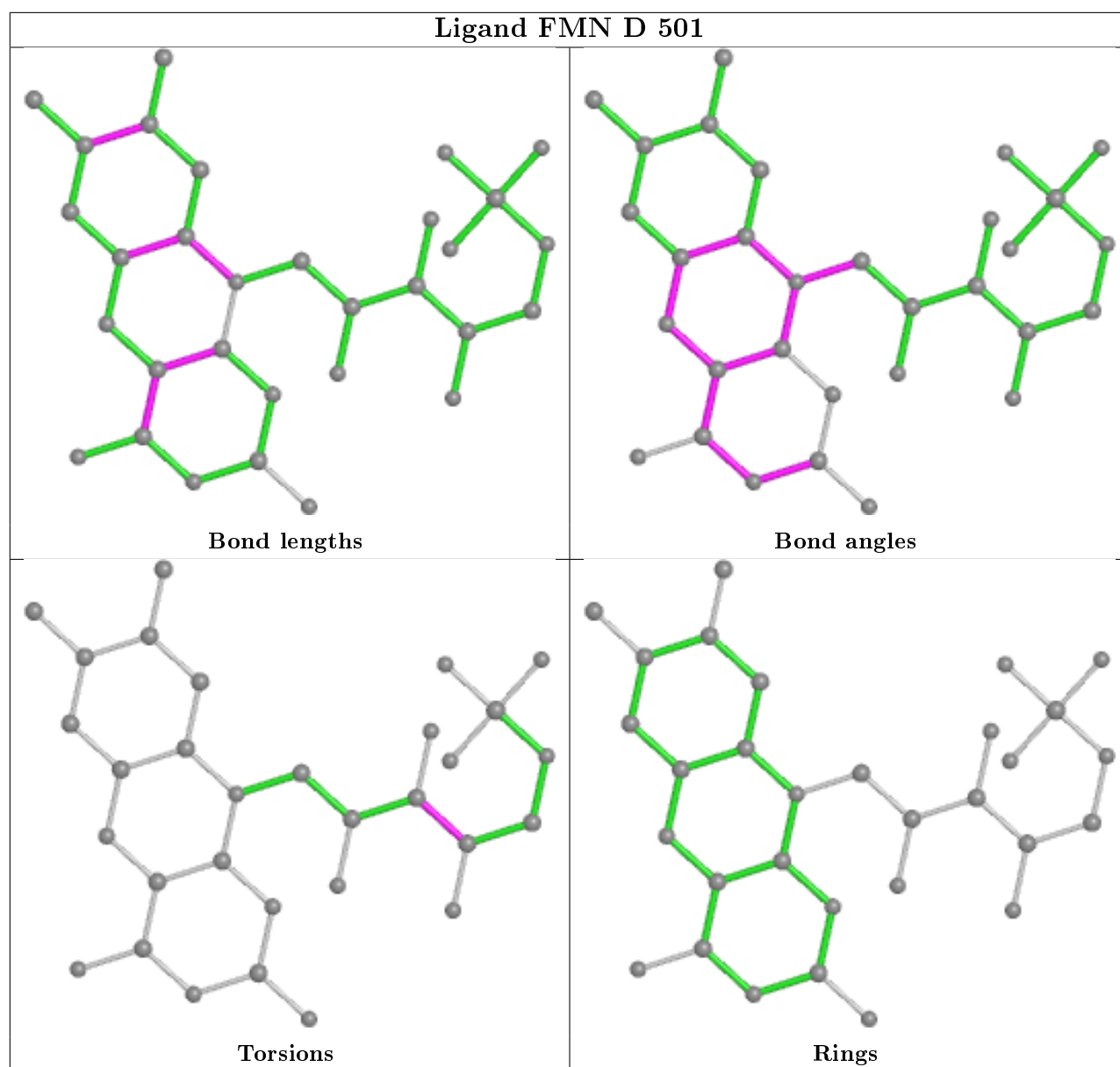
There are no ring outliers.

5 monomers are involved in 10 short contacts:

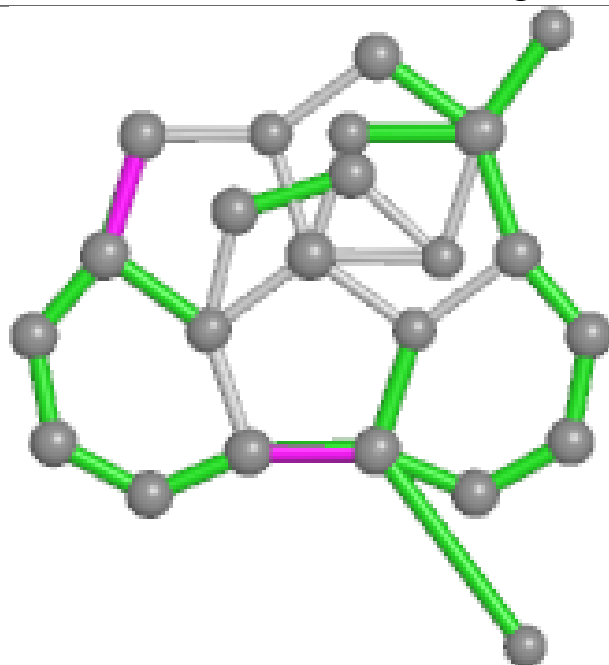
Mol	Chain	Res	Type	Clashes	Symm-Clashes
2	B	501	FMN	4	0
2	D	501	FMN	2	0
2	F	502	FMN	2	0
2	C	501	FMN	1	0
2	E	501	FMN	1	0

The following is a two-dimensional graphical depiction of Mogul quality analysis of bond lengths, bond angles, torsion angles, and ring geometry for all instances of the Ligand of Interest. In addition, ligands with molecular weight > 250 and outliers as shown on the validation Tables will also be included. For torsion angles, if less than 5% of the Mogul distribution of torsion angles is within 10 degrees of the torsion angle in question, then that torsion angle is considered an outlier. Any bond that is central to one or more torsion angles identified as an outlier by Mogul will be highlighted in the graph. For rings, the root-mean-square deviation (RMSD) between the ring in question and similar rings identified by Mogul is calculated over all ring torsion angles. If the average RMSD is greater than 60 degrees and the minimal RMSD between the ring in question and any Mogul-identified rings is also greater than 60 degrees, then that ring is considered an outlier. The outliers are highlighted in purple. The color gray indicates Mogul did not find sufficient equivalents in the CSD to analyse the geometry.

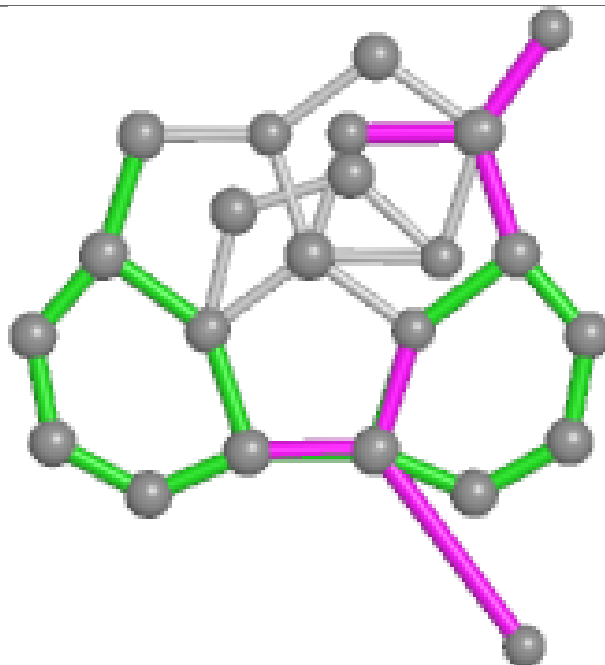




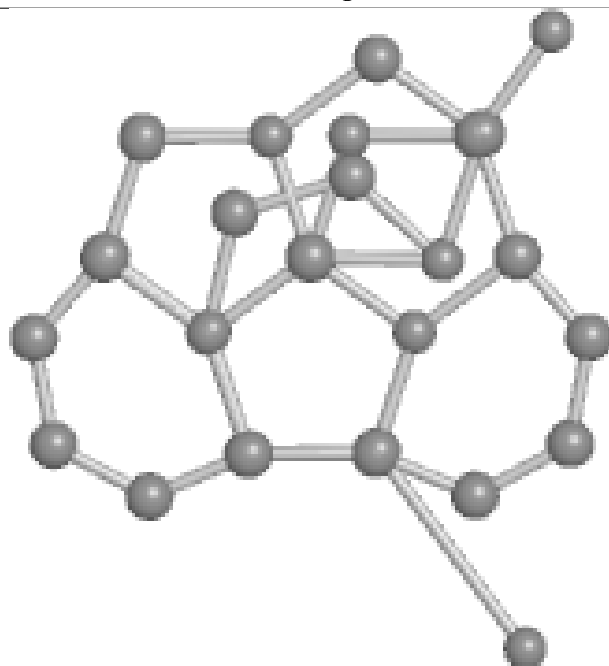
Ligand 7MT A 502



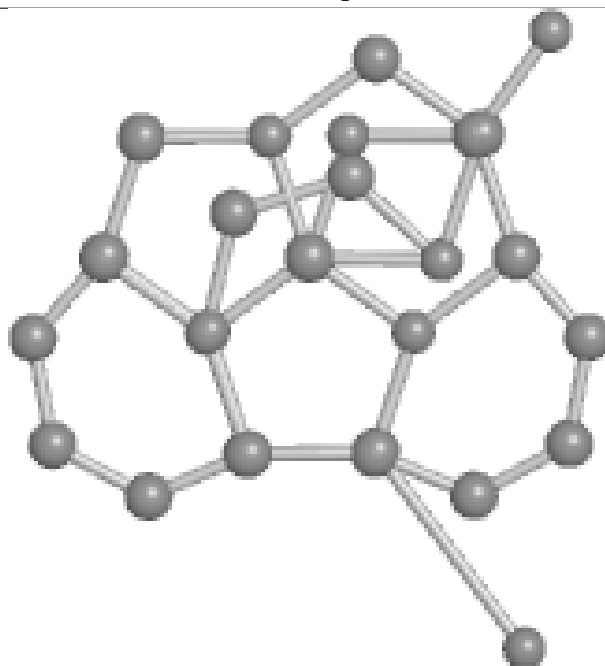
Bond lengths



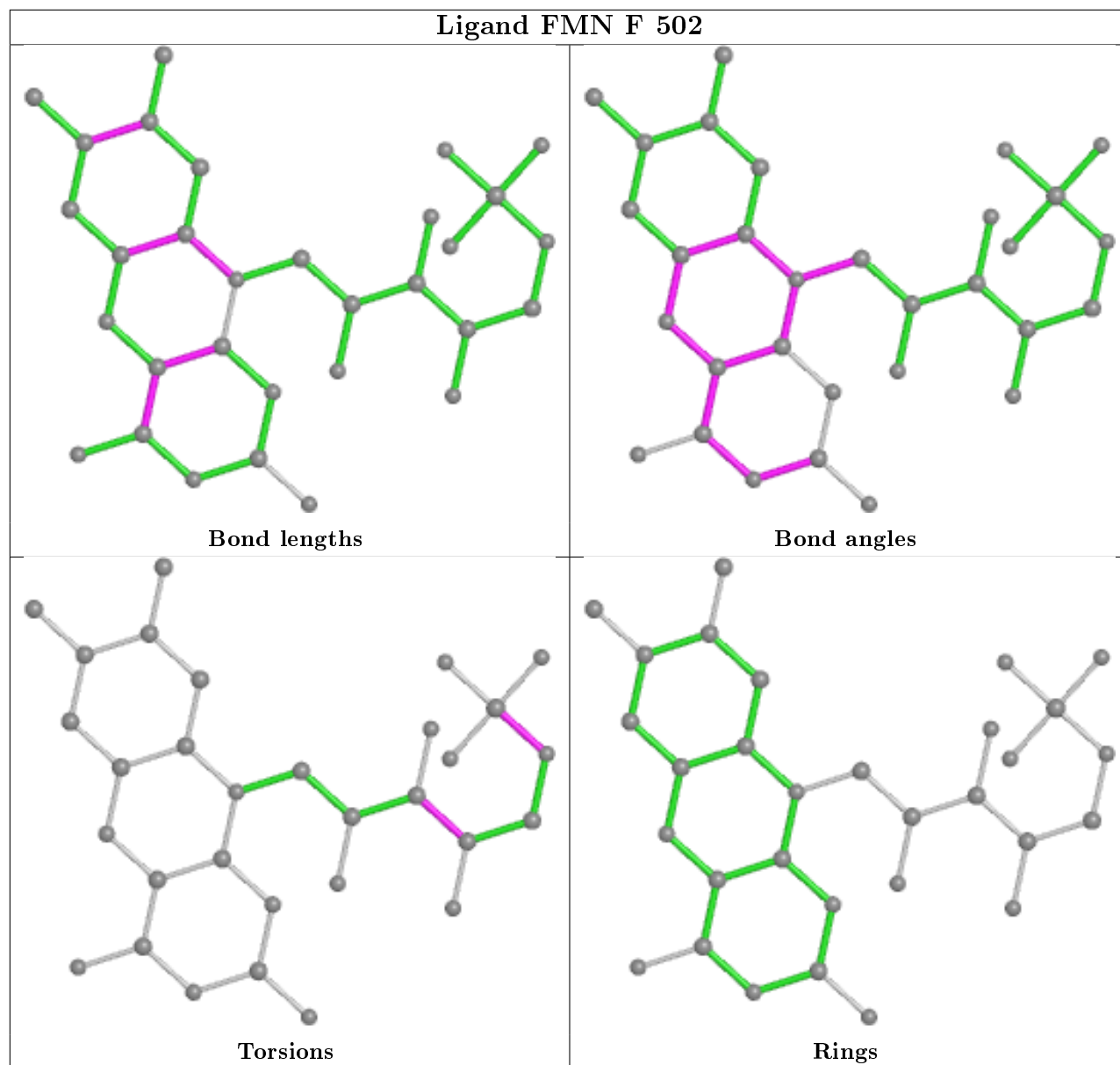
Bond angles



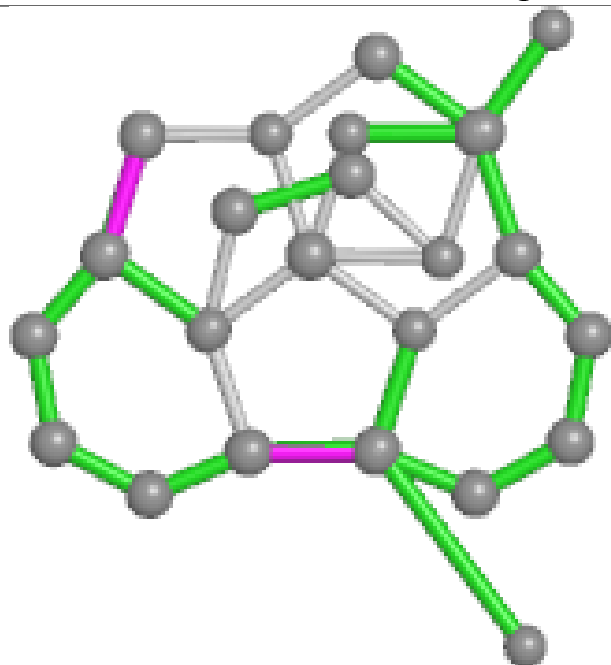
Torsions



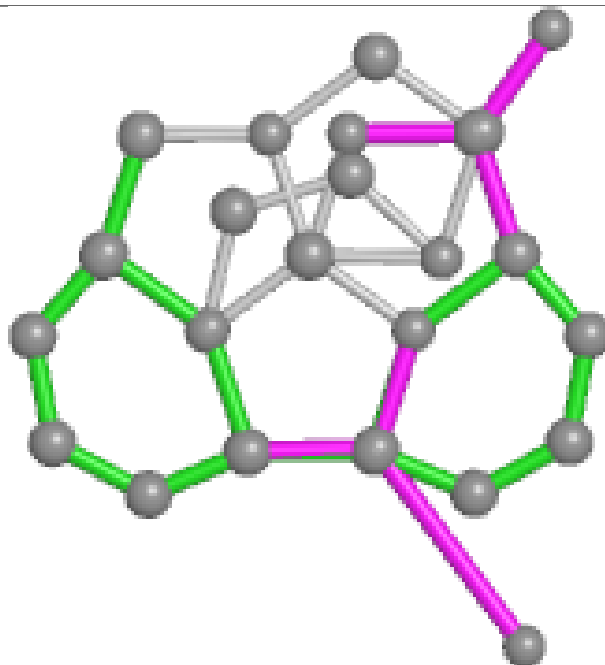
Rings



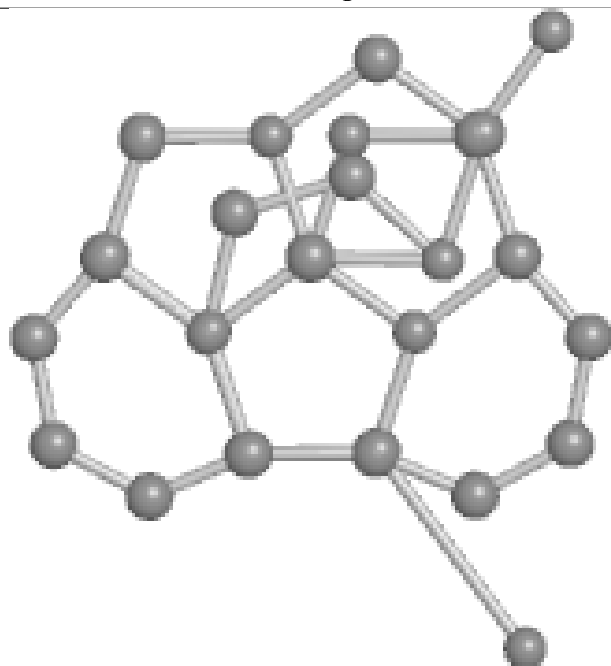
Ligand 7MT F 501



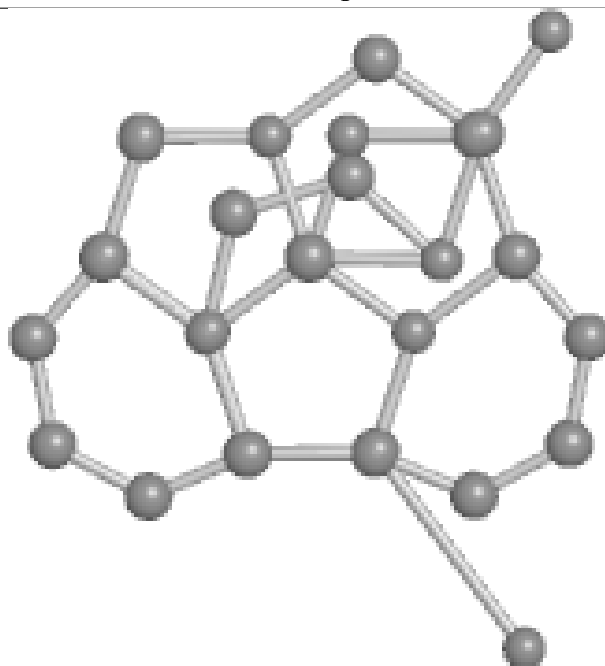
Bond lengths



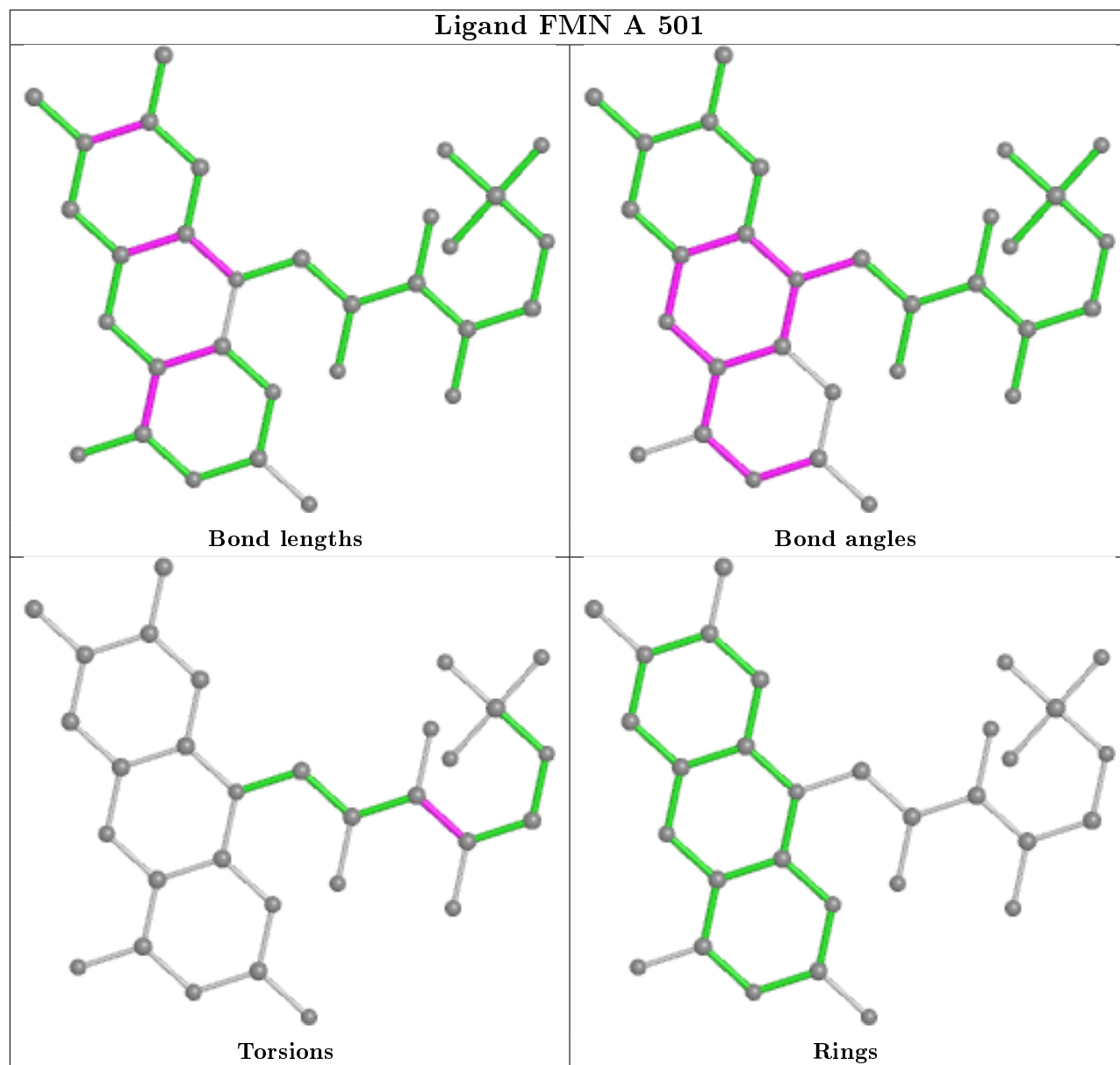
Bond angles

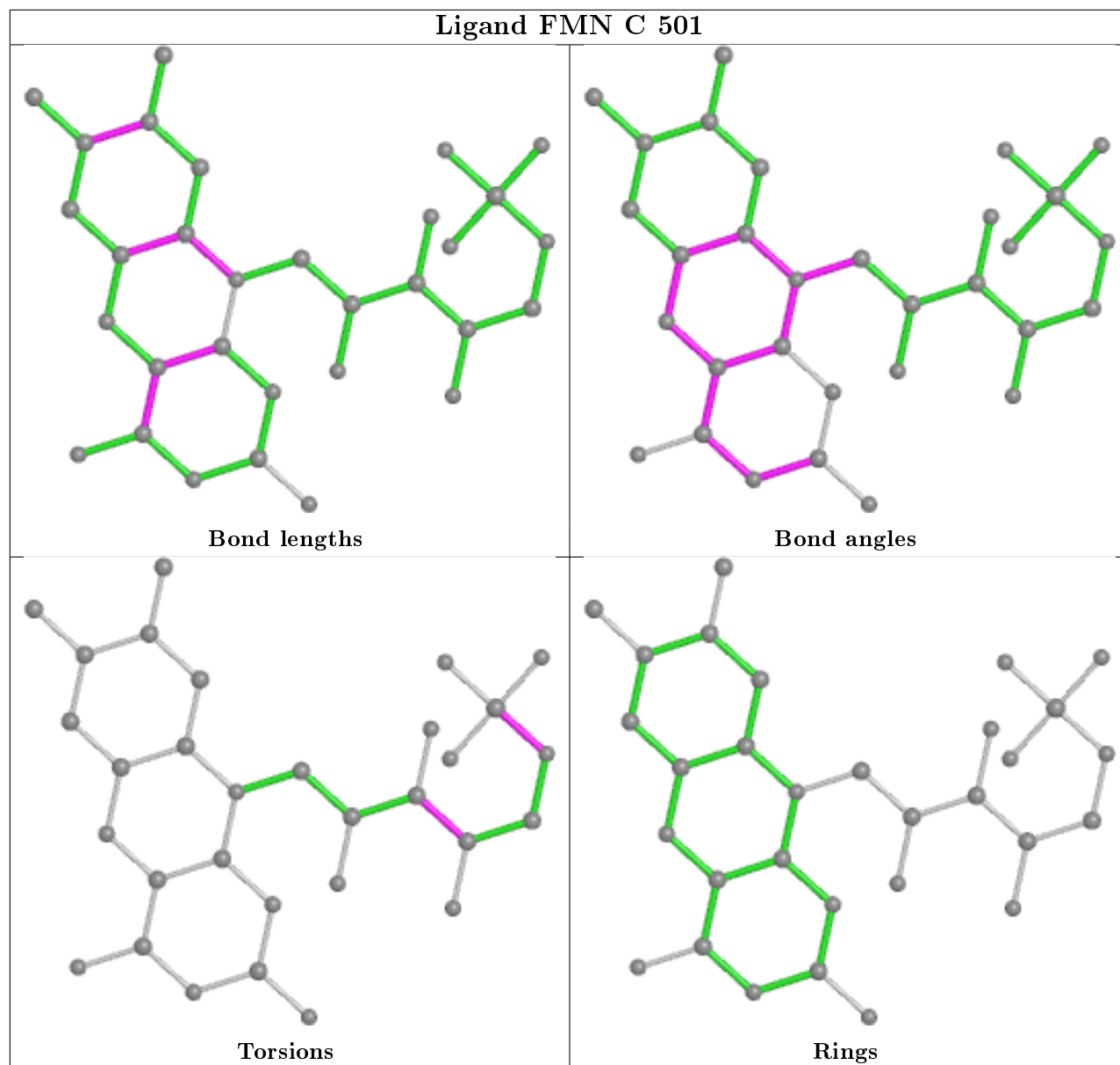


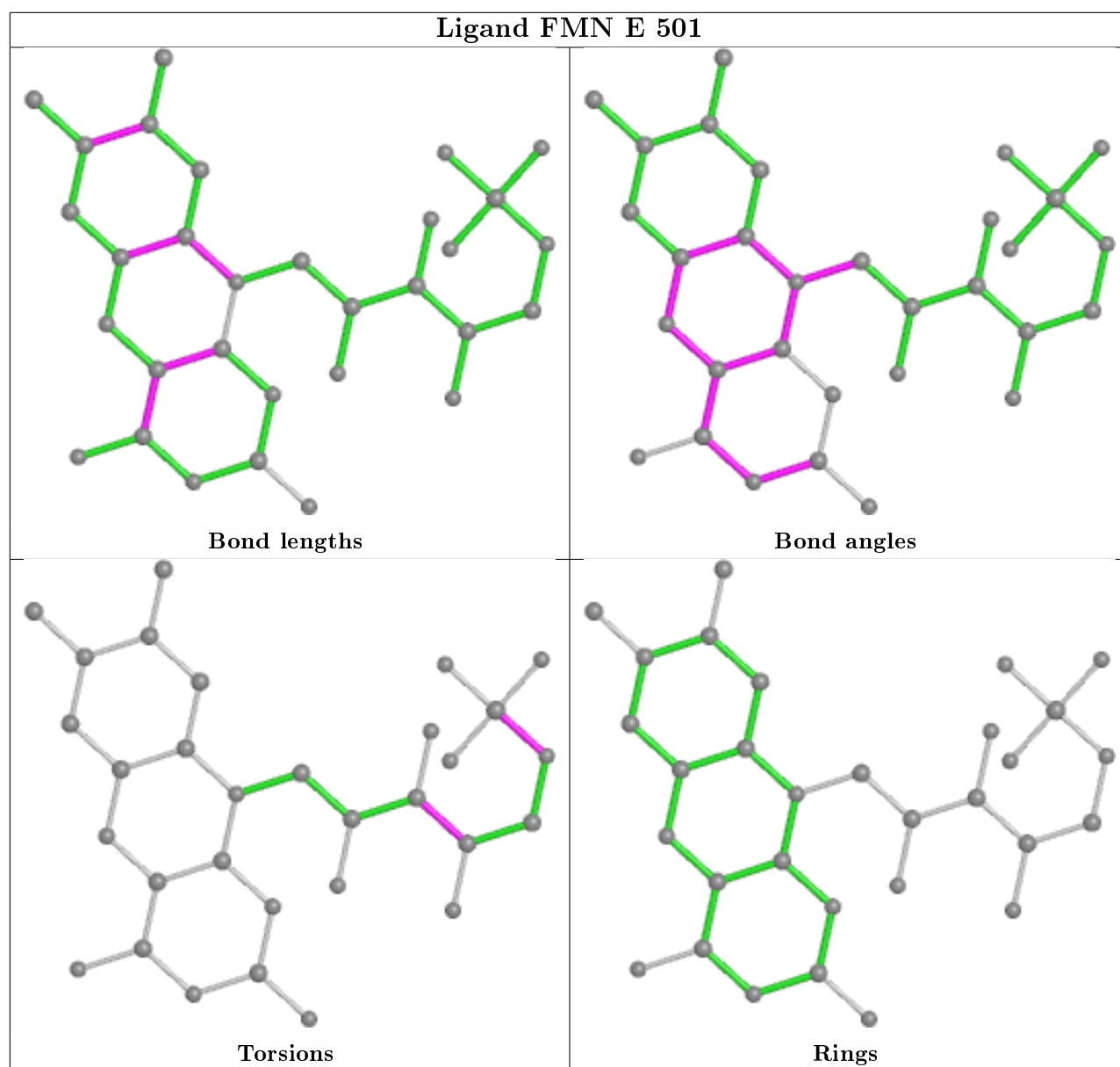
Torsions

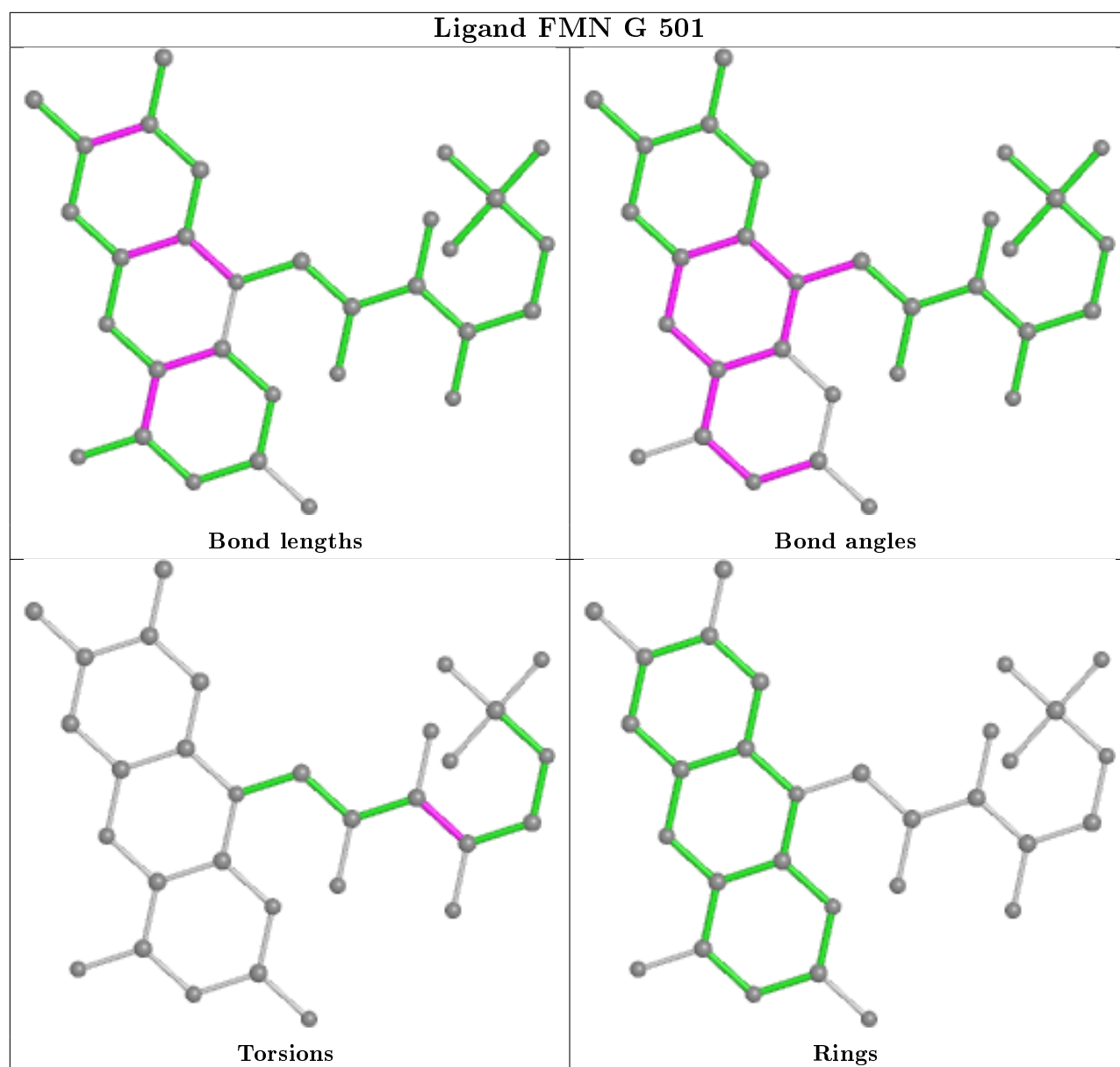


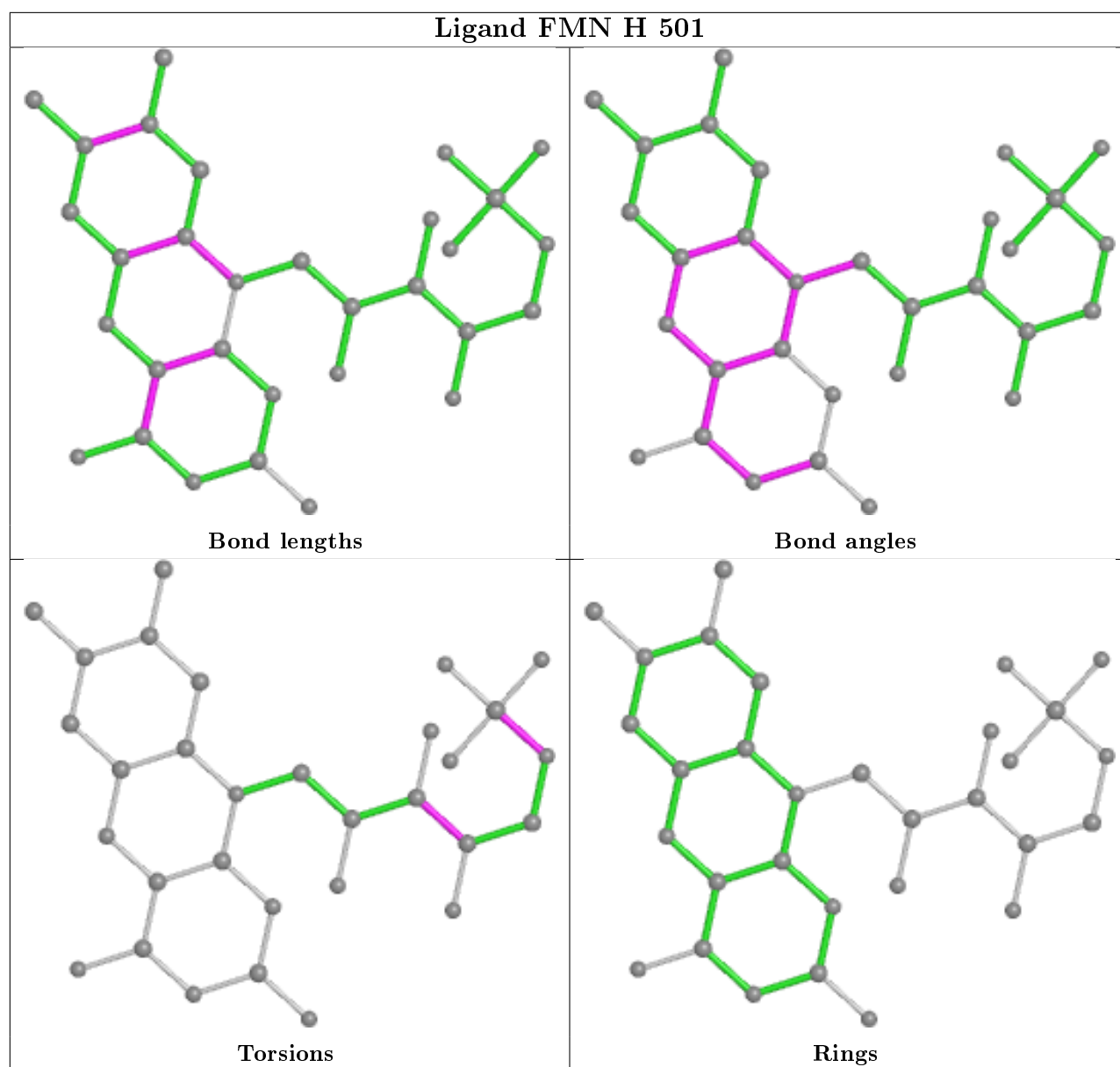
Rings











5.7 Other polymers [i](#)

There are no such residues in this entry.

5.8 Polymer linkage issues [i](#)

There are no chain breaks in this entry.

6 Fit of model and data ⓘ

6.1 Protein, DNA and RNA chains ⓘ

In the following table, the column labelled ‘#RSRZ> 2’ contains the number (and percentage) of RSRZ outliers, followed by percent RSRZ outliers for the chain as percentile scores relative to all X-ray entries and entries of similar resolution. The OWAB column contains the minimum, median, 95th percentile and maximum values of the occupancy-weighted average B-factor per residue. The column labelled ‘Q< 0.9’ lists the number of (and percentage) of residues with an average occupancy less than 0.9.

Mol	Chain	Analysed	<RSRZ>	#RSRZ>2	OWAB(Å ²)	Q<0.9
1	A	402/410 (98%)	-0.27	6 (1%) 73 72	37, 51, 78, 119	0
1	B	400/410 (97%)	-0.26	7 (1%) 68 66	37, 49, 76, 124	0
1	C	408/410 (99%)	-0.25	5 (1%) 79 77	34, 49, 78, 114	0
1	D	403/410 (98%)	-0.09	13 (3%) 47 45	37, 53, 88, 126	0
1	E	397/410 (96%)	-0.39	5 (1%) 77 75	32, 46, 72, 100	0
1	F	395/410 (96%)	-0.36	7 (1%) 68 66	32, 45, 73, 111	0
1	G	408/410 (99%)	-0.22	11 (2%) 54 52	34, 48, 83, 131	0
1	H	409/410 (99%)	-0.33	8 (1%) 65 63	32, 44, 73, 121	0
All	All	3222/3280 (98%)	-0.27	62 (1%) 66 65	32, 48, 79, 131	0

All (62) RSRZ outliers are listed below:

Mol	Chain	Res	Type	RSRZ
1	D	223	LEU	6.4
1	G	221	LEU	6.0
1	D	409	THR	4.5
1	D	221	LEU	4.3
1	A	295[A]	HIS	4.3
1	G	220	GLU	4.1
1	B	219	ILE	4.1
1	H	218	VAL	4.0
1	E	295[A]	HIS	4.0
1	H	409	THR	3.8
1	A	219	ILE	3.7
1	D	222	GLY	3.7
1	F	295[A]	HIS	3.7
1	H	408	LYS	3.4
1	F	341	ARG	3.3
1	D	123	LYS	3.2

Continued on next page...

Continued from previous page...

Mol	Chain	Res	Type	RSRZ
1	C	220	GLU	3.1
1	G	222	GLY	3.1
1	B	216	LYS	3.0
1	G	223	LEU	3.0
1	A	220	GLU	3.0
1	E	224	LEU	2.9
1	D	8	ILE	2.9
1	A	222	GLY	2.8
1	H	222	GLY	2.8
1	G	408	LYS	2.8
1	D	133	LEU	2.8
1	C	218	VAL	2.8
1	B	153	TRP	2.8
1	H	151	LEU	2.7
1	B	402	VAL	2.7
1	H	153	TRP	2.7
1	G	151	LEU	2.6
1	H	224	LEU	2.6
1	E	133	LEU	2.5
1	G	218	VAL	2.5
1	E	148	ALA	2.5
1	F	213	LYS	2.5
1	A	341	ARG	2.5
1	D	228	LYS	2.4
1	G	149	PRO	2.4
1	D	220	GLU	2.3
1	B	408	LYS	2.3
1	C	150	LEU	2.3
1	E	216	LYS	2.3
1	F	408	LYS	2.3
1	G	29	THR	2.2
1	D	166	ILE	2.2
1	G	133	LEU	2.2
1	F	344	LEU	2.1
1	D	408	LYS	2.1
1	A	216	LYS	2.1
1	B	343	GLY	2.1
1	B	212	LEU	2.1
1	G	217	GLU	2.1
1	C	221	LEU	2.1
1	H	220	GLU	2.1
1	F	342	THR	2.0

Continued on next page...

Continued from previous page...

Mol	Chain	Res	Type	RSRZ
1	D	218	VAL	2.0
1	C	216	LYS	2.0
1	F	340	ASN	2.0
1	D	122	LEU	2.0

6.2 Non-standard residues in protein, DNA, RNA chains [i](#)

There are no non-standard protein/DNA/RNA residues in this entry.

6.3 Carbohydrates [i](#)

There are no carbohydrates in this entry.

6.4 Ligands [i](#)

In the following table, the Atoms column lists the number of modelled atoms in the group and the number defined in the chemical component dictionary. The B-factors column lists the minimum, median, 95th percentile and maximum values of B factors of atoms in the group. The column labelled 'Q< 0.9' lists the number of atoms with occupancy less than 0.9.

Mol	Type	Chain	Res	Atoms	RSCC	RSR	B-factors(Å ²)	Q<0.9
5	CL	D	507	1/1	0.80	0.25	74,74,74,74	0
5	CL	H	505	1/1	0.85	0.07	85,85,85,85	0
4	TB	C	502	1/1	0.89	0.18	62,62,62,62	1
4	TB	G	504	1/1	0.90	0.39	35,35,35,35	1
5	CL	F	504	1/1	0.90	0.13	71,71,71,71	0
5	CL	E	503	1/1	0.92	0.13	94,94,94,94	0
5	CL	B	503	1/1	0.93	0.13	64,64,64,64	0
6	FE	H	504	1/1	0.94	0.06	46,46,46,46	1
5	CL	D	506	1/1	0.94	0.11	89,89,89,89	0
5	CL	E	504	1/1	0.94	0.20	65,65,65,65	0
4	TB	H	502	1/1	0.95	0.20	52,52,52,52	1
5	CL	F	505	1/1	0.95	0.19	58,58,58,58	0
6	FE	D	505	1/1	0.95	0.12	54,54,54,54	1
2	FMN	B	501	31/31	0.95	0.12	36,44,49,51	0
5	CL	A	504	1/1	0.95	0.12	68,68,68,68	0
2	FMN	H	501	31/31	0.95	0.13	32,38,42,43	0
5	CL	F	506	1/1	0.95	0.08	63,63,63,63	0
4	TB	D	502	1/1	0.96	0.11	71,71,71,71	1
5	CL	C	505	1/1	0.96	0.22	59,59,59,59	0

Continued on next page...

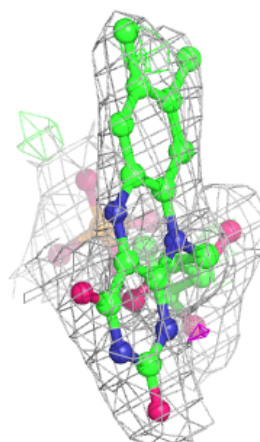
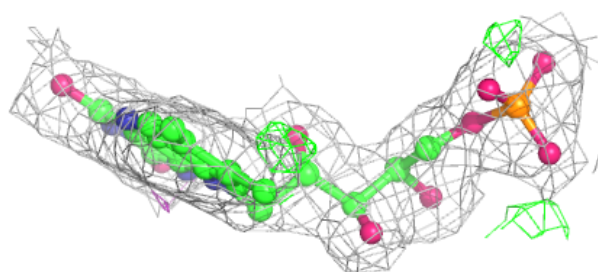
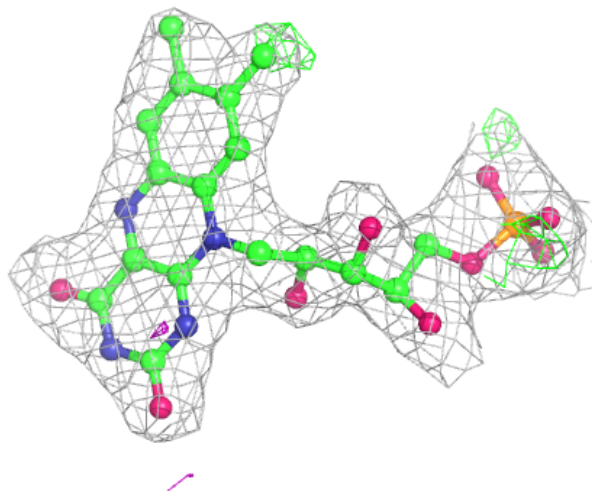
Continued from previous page...

Mol	Type	Chain	Res	Atoms	RSCC	RSR	B-factors(\AA^2)	Q<0.9
6	FE	C	504	1/1	0.96	0.05	53,53,53,53	1
2	FMN	D	501	31/31	0.96	0.11	34,41,49,53	0
2	FMN	F	502	31/31	0.96	0.13	37,40,44,46	0
2	FMN	G	501	31/31	0.96	0.11	34,41,45,47	0
4	TB	D	503	1/1	0.96	0.05	63,63,63,63	1
2	FMN	E	501	31/31	0.96	0.12	29,34,41,41	0
5	CL	E	505	1/1	0.97	0.21	61,61,61,61	0
5	CL	B	504	1/1	0.97	0.25	59,59,59,59	0
5	CL	C	506	1/1	0.97	0.20	80,80,80,80	0
2	FMN	C	501	31/31	0.97	0.11	35,39,45,48	0
5	CL	H	506	1/1	0.97	0.22	63,63,63,63	0
2	FMN	A	501	31/31	0.97	0.11	36,47,53,55	0
3	7MT	F	501	30/30	0.98	0.18	43,49,53,56	0
4	TB	G	502	1/1	0.98	0.17	74,74,74,74	1
3	7MT	A	502	30/30	0.98	0.14	37,47,53,57	0
4	TB	C	503	1/1	0.98	0.09	61,61,61,61	0
6	FE	G	505	1/1	0.98	0.04	52,52,52,52	1
4	TB	F	503	1/1	0.98	0.12	48,48,48,48	0
4	TB	B	502	1/1	0.98	0.13	50,50,50,50	0
5	CL	A	505	1/1	0.98	0.28	67,67,67,67	0
4	TB	A	503	1/1	0.98	0.09	52,52,52,52	0
5	CL	G	506	1/1	0.98	0.19	62,62,62,62	0
4	TB	H	503	1/1	0.99	0.09	57,57,57,57	0
4	TB	D	504	1/1	0.99	0.09	63,63,63,63	0
4	TB	E	502	1/1	0.99	0.12	51,51,51,51	0
4	TB	G	503	1/1	0.99	0.10	60,60,60,60	0

The following is a graphical depiction of the model fit to experimental electron density of all instances of the Ligand of Interest. In addition, ligands with molecular weight > 250 and outliers as shown on the geometry validation Tables will also be included. Each fit is shown from different orientation to approximate a three-dimensional view.

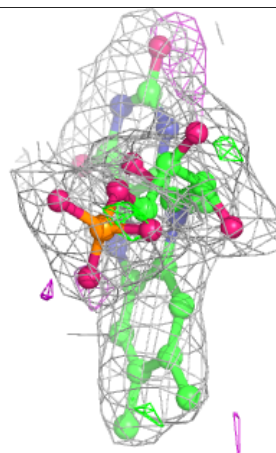
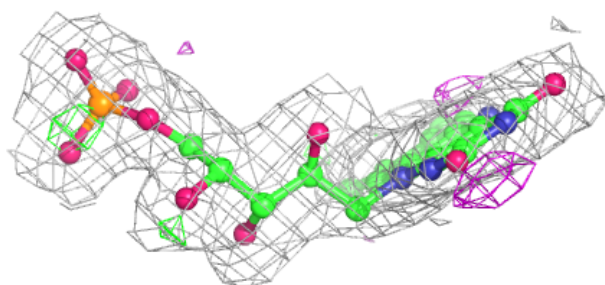
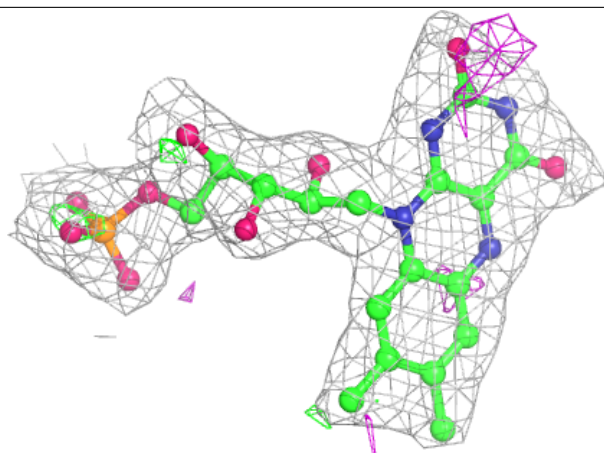
Electron density around FMN B 501:

$2mF_o-DF_c$ (at 0.7 rmsd) in gray
 mF_o-DF_c (at 3 rmsd) in purple (negative)
and green (positive)



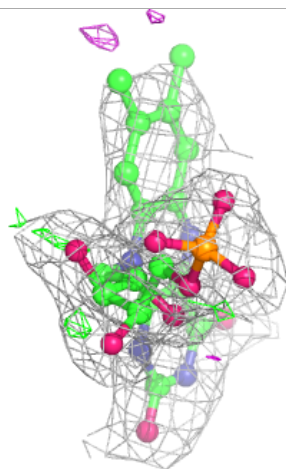
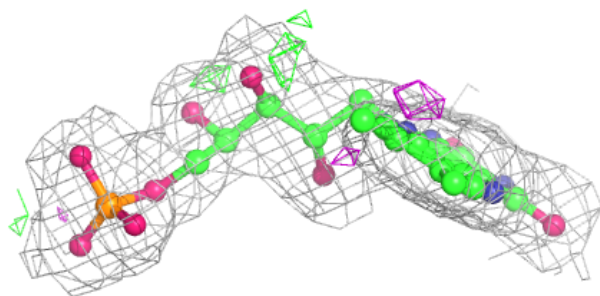
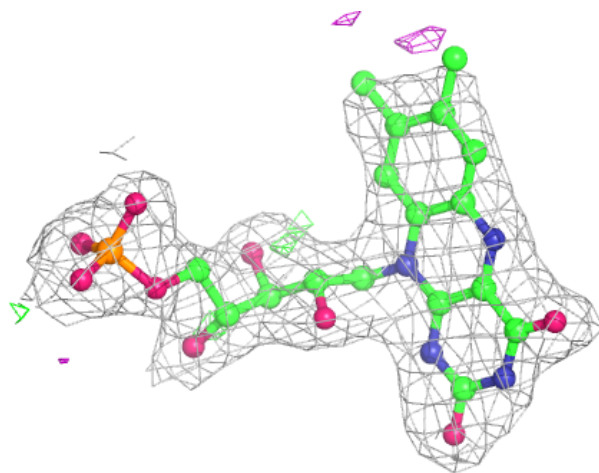
Electron density around FMN H 501:

$2mF_o - DF_c$ (at 0.7 rmsd) in gray
 $mF_o - DF_c$ (at 3 rmsd) in purple (negative)
and green (positive)



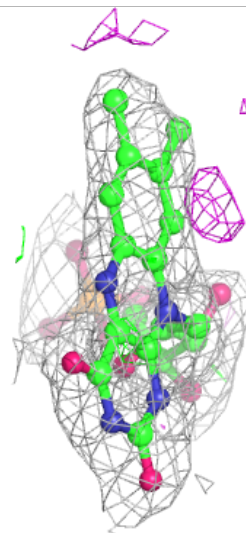
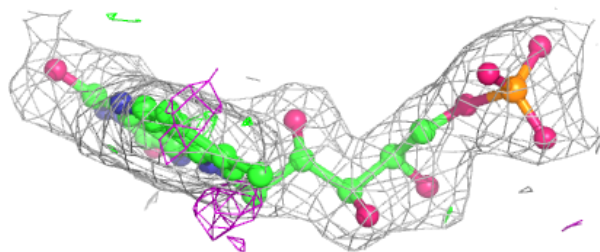
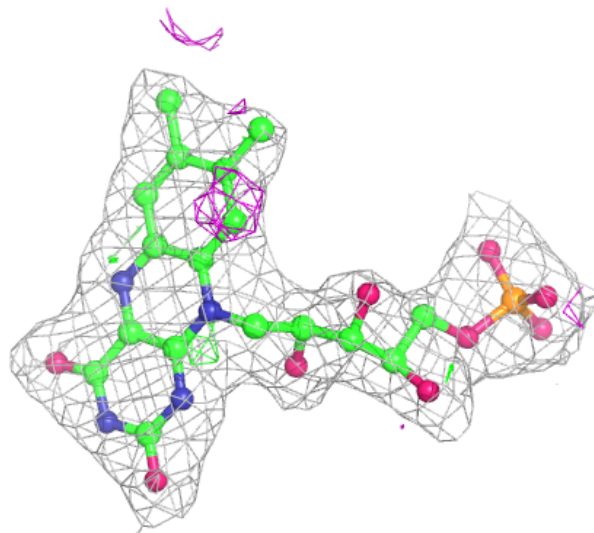
Electron density around FMN D 501:

$2mF_o-DF_c$ (at 0.7 rmsd) in gray
 mF_o-DF_c (at 3 rmsd) in purple (negative)
and green (positive)



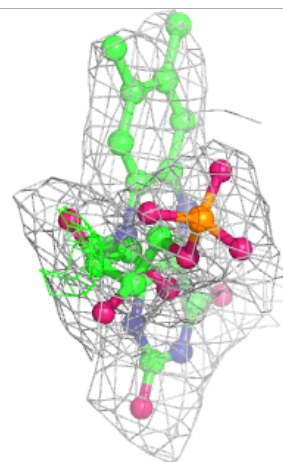
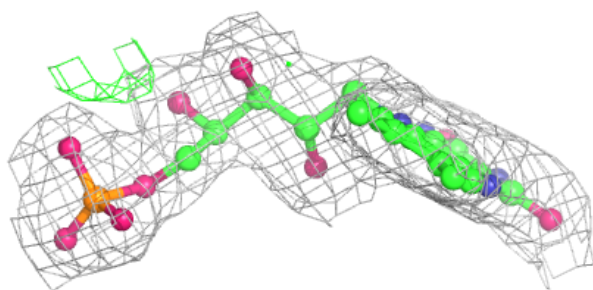
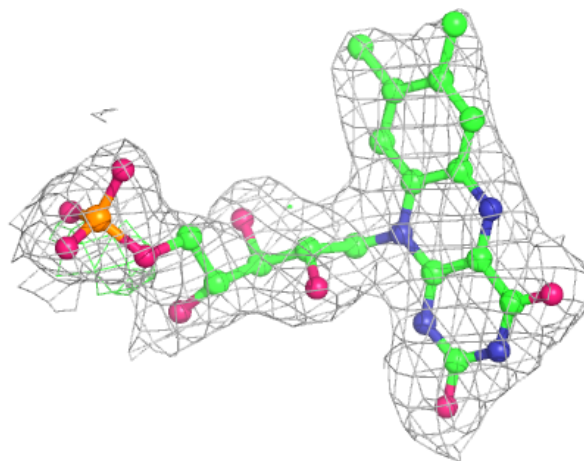
Electron density around FMN F 502:

$2mF_o-DF_c$ (at 0.7 rmsd) in gray
 mF_o-DF_c (at 3 rmsd) in purple (negative)
and green (positive)



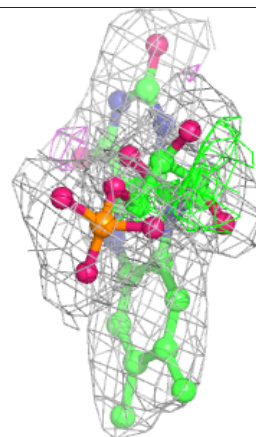
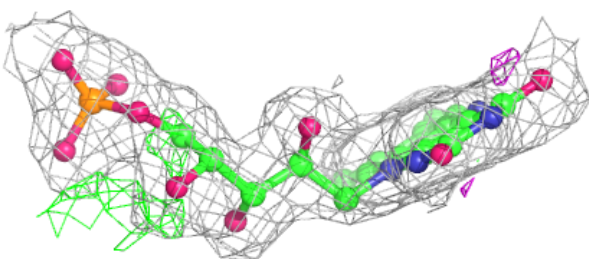
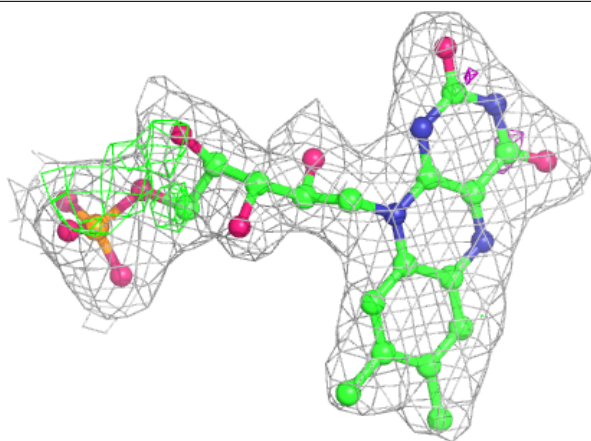
Electron density around FMN G 501:

$2mF_o-DF_c$ (at 0.7 rmsd) in gray
 mF_o-DF_c (at 3 rmsd) in purple (negative)
and green (positive)



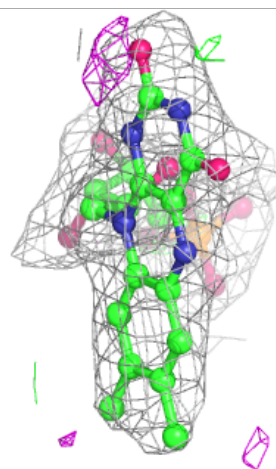
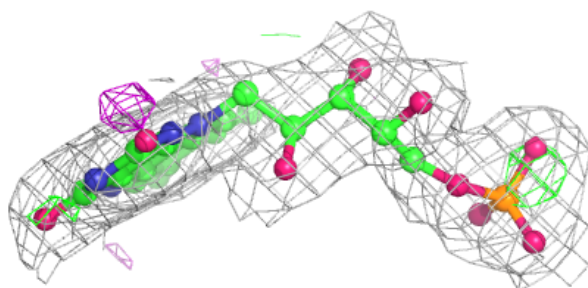
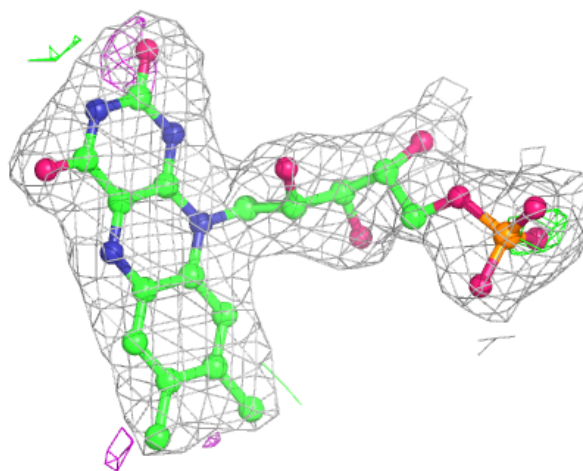
Electron density around FMN E 501:

$2mF_o-DF_c$ (at 0.7 rmsd) in gray
 mF_o-DF_c (at 3 rmsd) in purple (negative)
and green (positive)



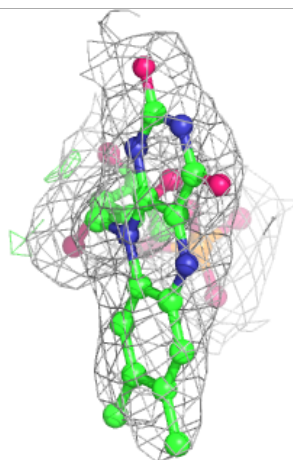
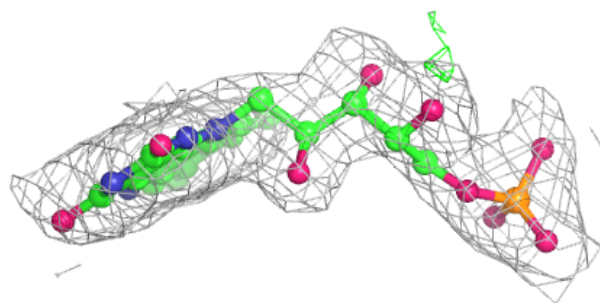
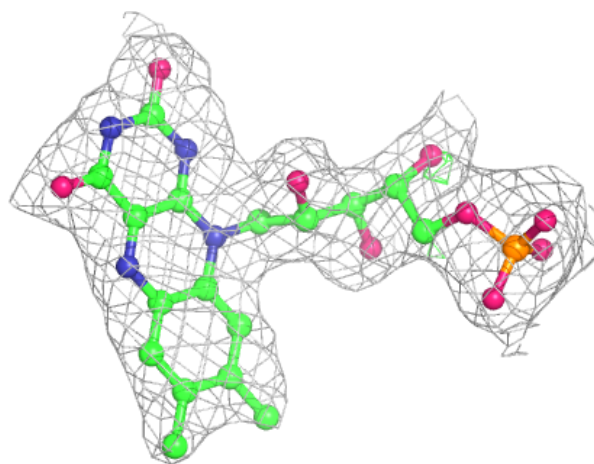
Electron density around FMN C 501:

$2mF_o-DF_c$ (at 0.7 rmsd) in gray
 mF_o-DF_c (at 3 rmsd) in purple (negative)
and green (positive)



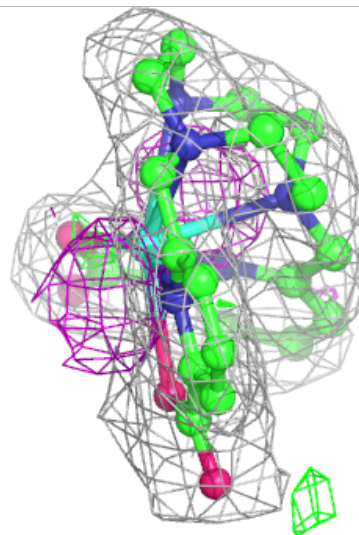
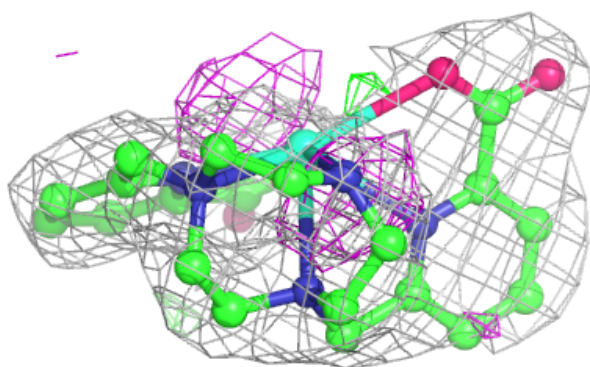
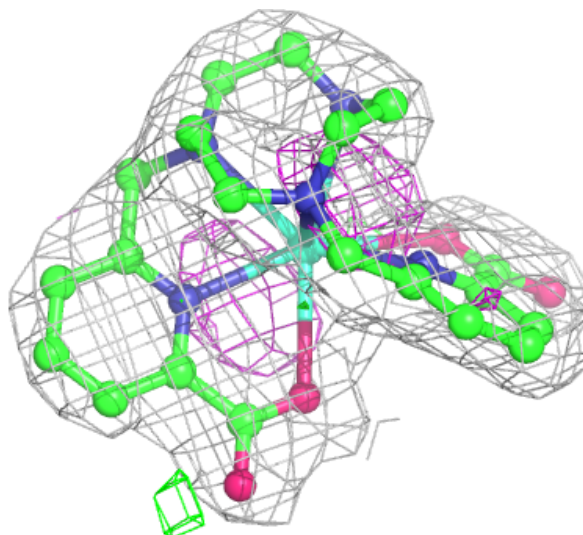
Electron density around FMN A 501:

$2mF_o-DF_c$ (at 0.7 rmsd) in gray
 mF_o-DF_c (at 3 rmsd) in purple (negative)
and green (positive)



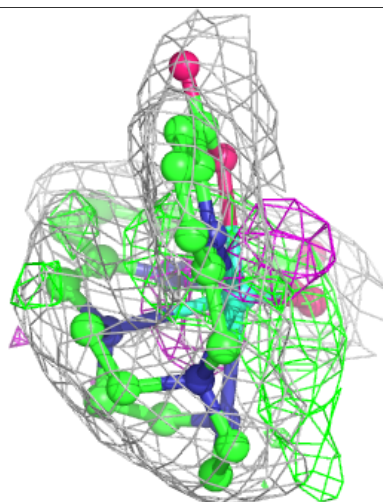
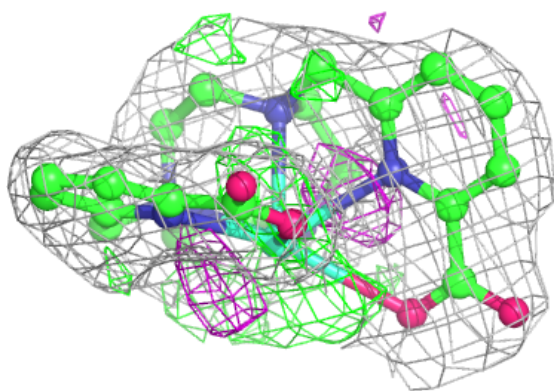
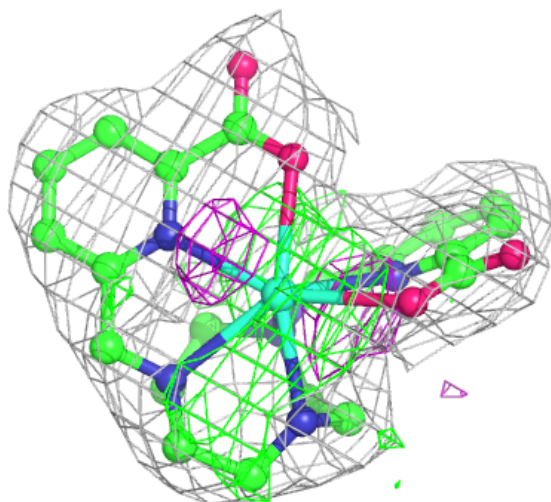
Electron density around 7MT F 501:

$2mF_o-DF_c$ (at 0.7 rmsd) in gray
 mF_o-DF_c (at 3 rmsd) in purple (negative)
and green (positive)



Electron density around 7MT A 502:

$2mF_o-DF_c$ (at 0.7 rmsd) in gray
 mF_o-DF_c (at 3 rmsd) in purple (negative)
and green (positive)



6.5 Other polymers [i](#)

There are no such residues in this entry.