



wwPDB X-ray Structure Validation Summary Report ⓘ

May 14, 2020 – 06:06 am BST

PDB ID : 3FSY
Title : Structure of tetrahydrodipicolinate N-succinyltransferase (Rv1201c;DapD) in complex with succinyl-CoA from Mycobacterium tuberculosis
Authors : Schuldt, L.; Weyand, S.; Kefala, G.; Weiss, M.S.
Deposited on : 2009-01-12
Resolution : 1.97 Å(reported)

This is a wwPDB X-ray Structure Validation Summary Report for a publicly released PDB entry.

We welcome your comments at validation@mail.wwpdb.org

A user guide is available at

<https://www.wwpdb.org/validation/2017/XrayValidationReportHelp>

with specific help available everywhere you see the ⓘ symbol.

The following versions of software and data (see [references ⓘ](#)) were used in the production of this report:

MolProbity : 4.02b-467
Mogul : 1.8.5 (274361), CSD as541be (2020)
Xtriage (Phenix) : 1.13
EDS : 2.11
buster-report : 1.1.7 (2018)
Percentile statistics : 20191225.v01 (using entries in the PDB archive December 25th 2019)
Refmac : 5.8.0158
CCP4 : 7.0.044 (Gargrove)
Ideal geometry (proteins) : Engh & Huber (2001)
Ideal geometry (DNA, RNA) : Parkinson et al. (1996)
Validation Pipeline (wwPDB-VP) : 2.11

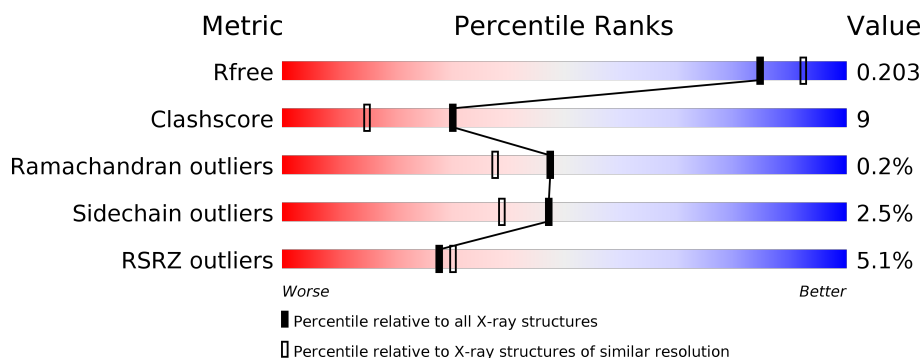
1 Overall quality at a glance

The following experimental techniques were used to determine the structure:

X-RAY DIFFRACTION

The reported resolution of this entry is 1.97 Å.

Percentile scores (ranging between 0-100) for global validation metrics of the entry are shown in the following graphic. The table shows the number of entries on which the scores are based.



Metric	Whole archive (#Entries)	Similar resolution (#Entries, resolution range(Å))
R_{free}	130704	11647 (2.00-1.96)
Clashscore	141614	1014 (1.98-1.98)
Ramachandran outliers	138981	1006 (1.98-1.98)
Sidechain outliers	138945	1006 (1.98-1.98)
RSRZ outliers	127900	11410 (2.00-1.96)

The table below summarises the geometric issues observed across the polymeric chains and their fit to the electron density. The red, orange, yellow and green segments on the lower bar indicate the fraction of residues that contain outliers for ≥ 3 , 2, 1 and 0 types of geometric quality criteria respectively. A grey segment represents the fraction of residues that are not modelled. The numeric value for each fraction is indicated below the corresponding segment, with a dot representing fractions $\leq 5\%$. The upper red bar (where present) indicates the fraction of residues that have poor fit to the electron density. The numeric value is given above the bar.

Mol	Chain	Length	Quality of chain
1	A	332	<div> <div>3%</div> <div> <div></div> <div>82%</div> <div>9%</div> <div>8%</div> </div> </div>
1	B	332	<div> <div>3%</div> <div> <div></div> <div>81%</div> <div>10%</div> <div>8%</div> </div> </div>
1	C	332	<div> <div>2%</div> <div> <div></div> <div>80%</div> <div>9%</div> <div>11%</div> </div> </div>
1	D	332	<div> <div>4%</div> <div> <div></div> <div>80%</div> <div>11%</div> <div>7%</div> </div> </div>
1	E	332	<div> <div>12%</div> <div> <div></div> <div>71%</div> <div>17%</div> <div>9%</div> </div> </div>

The following table lists non-polymeric compounds, carbohydrate monomers and non-standard residues in protein, DNA, RNA chains that are outliers for geometric or electron-density-fit criteria:

Mol	Type	Chain	Res	Chirality	Geometry	Clashes	Electron density
6	ACY	B	332	-	-	X	-
6	ACY	C	331	-	-	X	-

2 Entry composition

There are 7 unique types of molecules in this entry. The entry contains 11992 atoms, of which 0 are hydrogens and 0 are deuteriums.

In the tables below, the ZeroOcc column contains the number of atoms modelled with zero occupancy, the AltConf column contains the number of residues with at least one atom in alternate conformation and the Trace column contains the number of residues modelled with at most 2 atoms.

- Molecule 1 is a protein called Tetrahydronicotinate N-succinyltransferase.

Mol	Chain	Residues	Atoms					ZeroOcc	AltConf	Trace
1	A	304	Total	C	N	O	S	0	1	0
			2206	1370	402	426	8			
1	B	307	Total	C	N	O	S	0	3	0
			2229	1383	408	430	8			
1	C	297	Total	C	N	O	S	0	4	0
			2172	1351	397	416	8			
1	D	308	Total	C	N	O	S	0	6	0
			2247	1401	406	432	8			
1	E	301	Total	C	N	O	S	0	0	0
			2182	1355	399	420	8			

There are 80 discrepancies between the modelled and reference sequences:

Chain	Residue	Modelled	Actual	Comment	Reference
A	-1	MET	-	EXPRESSION TAG	UNP O05302
A	0	ALA	-	EXPRESSION TAG	UNP O05302
A	1	VAL	-	EXPRESSION TAG	UNP O05302
A	318	GLY	-	EXPRESSION TAG	UNP O05302
A	319	VAL	-	EXPRESSION TAG	UNP O05302
A	320	PRO	-	EXPRESSION TAG	UNP O05302
A	321	ARG	-	EXPRESSION TAG	UNP O05302
A	322	GLY	-	EXPRESSION TAG	UNP O05302
A	323	LEU	-	EXPRESSION TAG	UNP O05302
A	324	GLU	-	EXPRESSION TAG	UNP O05302
A	325	HIS	-	EXPRESSION TAG	UNP O05302
A	326	HIS	-	EXPRESSION TAG	UNP O05302
A	327	HIS	-	EXPRESSION TAG	UNP O05302
A	328	HIS	-	EXPRESSION TAG	UNP O05302
A	329	HIS	-	EXPRESSION TAG	UNP O05302
A	330	HIS	-	EXPRESSION TAG	UNP O05302
B	-1	MET	-	EXPRESSION TAG	UNP O05302
B	0	ALA	-	EXPRESSION TAG	UNP O05302
B	1	VAL	-	EXPRESSION TAG	UNP O05302

Continued on next page...

Continued from previous page...

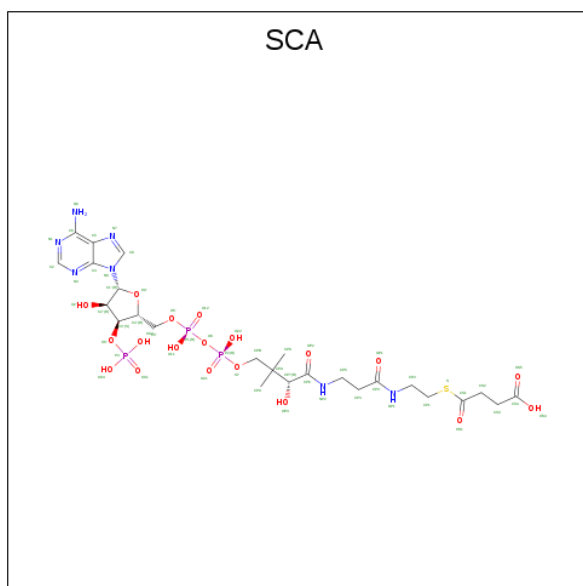
Chain	Residue	Modelled	Actual	Comment	Reference
B	318	GLY	-	EXPRESSION TAG	UNP O05302
B	319	VAL	-	EXPRESSION TAG	UNP O05302
B	320	PRO	-	EXPRESSION TAG	UNP O05302
B	321	ARG	-	EXPRESSION TAG	UNP O05302
B	322	GLY	-	EXPRESSION TAG	UNP O05302
B	323	LEU	-	EXPRESSION TAG	UNP O05302
B	324	GLU	-	EXPRESSION TAG	UNP O05302
B	325	HIS	-	EXPRESSION TAG	UNP O05302
B	326	HIS	-	EXPRESSION TAG	UNP O05302
B	327	HIS	-	EXPRESSION TAG	UNP O05302
B	328	HIS	-	EXPRESSION TAG	UNP O05302
B	329	HIS	-	EXPRESSION TAG	UNP O05302
B	330	HIS	-	EXPRESSION TAG	UNP O05302
C	-1	MET	-	EXPRESSION TAG	UNP O05302
C	0	ALA	-	EXPRESSION TAG	UNP O05302
C	1	VAL	-	EXPRESSION TAG	UNP O05302
C	318	GLY	-	EXPRESSION TAG	UNP O05302
C	319	VAL	-	EXPRESSION TAG	UNP O05302
C	320	PRO	-	EXPRESSION TAG	UNP O05302
C	321	ARG	-	EXPRESSION TAG	UNP O05302
C	322	GLY	-	EXPRESSION TAG	UNP O05302
C	323	LEU	-	EXPRESSION TAG	UNP O05302
C	324	GLU	-	EXPRESSION TAG	UNP O05302
C	325	HIS	-	EXPRESSION TAG	UNP O05302
C	326	HIS	-	EXPRESSION TAG	UNP O05302
C	327	HIS	-	EXPRESSION TAG	UNP O05302
C	328	HIS	-	EXPRESSION TAG	UNP O05302
C	329	HIS	-	EXPRESSION TAG	UNP O05302
C	330	HIS	-	EXPRESSION TAG	UNP O05302
D	-1	MET	-	EXPRESSION TAG	UNP O05302
D	0	ALA	-	EXPRESSION TAG	UNP O05302
D	1	VAL	-	EXPRESSION TAG	UNP O05302
D	318	GLY	-	EXPRESSION TAG	UNP O05302
D	319	VAL	-	EXPRESSION TAG	UNP O05302
D	320	PRO	-	EXPRESSION TAG	UNP O05302
D	321	ARG	-	EXPRESSION TAG	UNP O05302
D	322	GLY	-	EXPRESSION TAG	UNP O05302
D	323	LEU	-	EXPRESSION TAG	UNP O05302
D	324	GLU	-	EXPRESSION TAG	UNP O05302
D	325	HIS	-	EXPRESSION TAG	UNP O05302
D	326	HIS	-	EXPRESSION TAG	UNP O05302
D	327	HIS	-	EXPRESSION TAG	UNP O05302

Continued on next page...

Continued from previous page...

Chain	Residue	Modelled	Actual	Comment	Reference
D	328	HIS	-	EXPRESSION TAG	UNP O05302
D	329	HIS	-	EXPRESSION TAG	UNP O05302
D	330	HIS	-	EXPRESSION TAG	UNP O05302
E	-1	MET	-	EXPRESSION TAG	UNP O05302
E	0	ALA	-	EXPRESSION TAG	UNP O05302
E	1	VAL	-	EXPRESSION TAG	UNP O05302
E	318	GLY	-	EXPRESSION TAG	UNP O05302
E	319	VAL	-	EXPRESSION TAG	UNP O05302
E	320	PRO	-	EXPRESSION TAG	UNP O05302
E	321	ARG	-	EXPRESSION TAG	UNP O05302
E	322	GLY	-	EXPRESSION TAG	UNP O05302
E	323	LEU	-	EXPRESSION TAG	UNP O05302
E	324	GLU	-	EXPRESSION TAG	UNP O05302
E	325	HIS	-	EXPRESSION TAG	UNP O05302
E	326	HIS	-	EXPRESSION TAG	UNP O05302
E	327	HIS	-	EXPRESSION TAG	UNP O05302
E	328	HIS	-	EXPRESSION TAG	UNP O05302
E	329	HIS	-	EXPRESSION TAG	UNP O05302
E	330	HIS	-	EXPRESSION TAG	UNP O05302

- Molecule 2 is SUCCINYL-COENZYME A (three-letter code: SCA) (formula: $C_{25}H_{40}N_7O_{19}P_3S$).



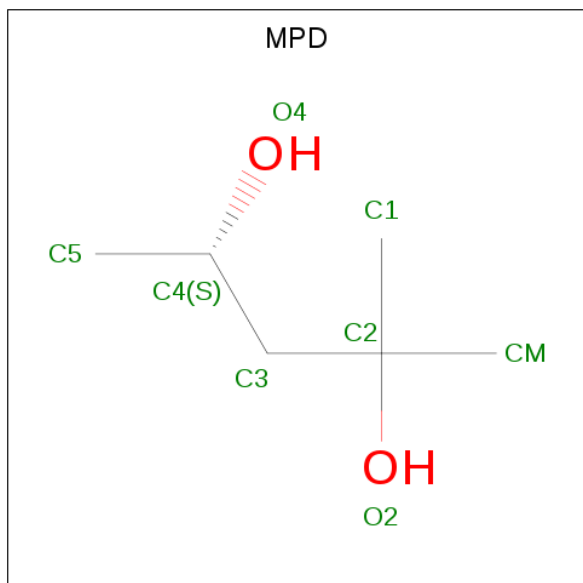
Mol	Chain	Residues	Atoms						ZeroOcc	AltConf
2	A	1	Total	C	N	O	P		0	0
			31	10	5	13	3			
2	A	1	Total	C	N	O	P	S	0	0
			55	25	7	19	3	1		

Continued on next page...

Continued from previous page...

Mol	Chain	Residues	Atoms					ZeroOcc	AltConf	
2	B	1	Total	C	N	O	P	0	0	
			31	10	5	13	3			
2	E	1	Total	C	N	O	P	S	0	0
			52	23	7	18	3	1		

- Molecule 3 is (4S)-2-METHYL-2,4-PENTANEDIOL (three-letter code: MPD) (formula: $C_6H_{14}O_2$).



Mol	Chain	Residues	Atoms			ZeroOcc	AltConf
3	A	1	Total	C	O	0	0
			8	6	2		
3	B	1	Total	C	O	0	0
			8	6	2		
3	D	1	Total	C	O	0	0
			8	6	2		

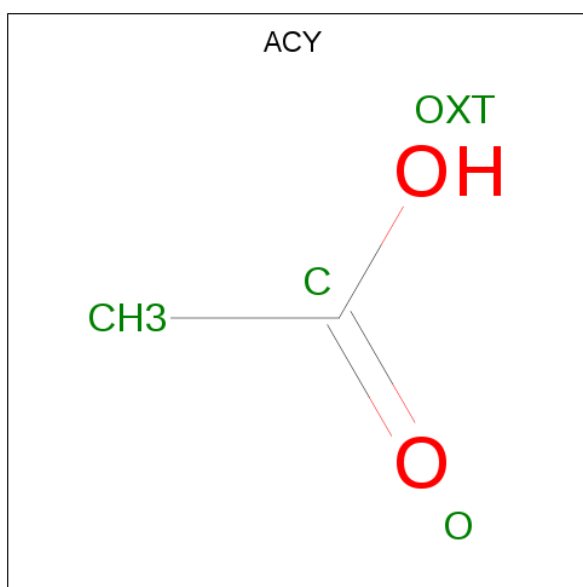
- Molecule 4 is MAGNESIUM ION (three-letter code: MG) (formula: Mg).

Mol	Chain	Residues	Atoms		ZeroOcc	AltConf
4	B	1	Total	Mg	0	0
			1	1		
4	A	4	Total	Mg	0	0
			4	4		
4	D	2	Total	Mg	0	0
			2	2		
4	E	3	Total	Mg	0	0
			3	3		

- Molecule 5 is SODIUM ION (three-letter code: NA) (formula: Na).

Mol	Chain	Residues	Atoms	ZeroOcc	AltConf
5	B	1	Total Na 1 1	0	0
5	A	1	Total Na 1 1	0	0
5	D	1	Total Na 1 1	0	0
5	E	1	Total Na 1 1	0	0

- Molecule 6 is ACETIC ACID (three-letter code: ACY) (formula: C₂H₄O₂).



Mol	Chain	Residues	Atoms	ZeroOcc	AltConf
6	B	1	Total C O 4 2 2	0	0
6	C	1	Total C O 4 2 2	0	0
6	D	1	Total C O 4 2 2	0	0

- Molecule 7 is water.

Mol	Chain	Residues	Atoms	ZeroOcc	AltConf
7	A	176	Total O 176 176	0	0
7	B	174	Total O 174 174	0	0

Continued on next page...

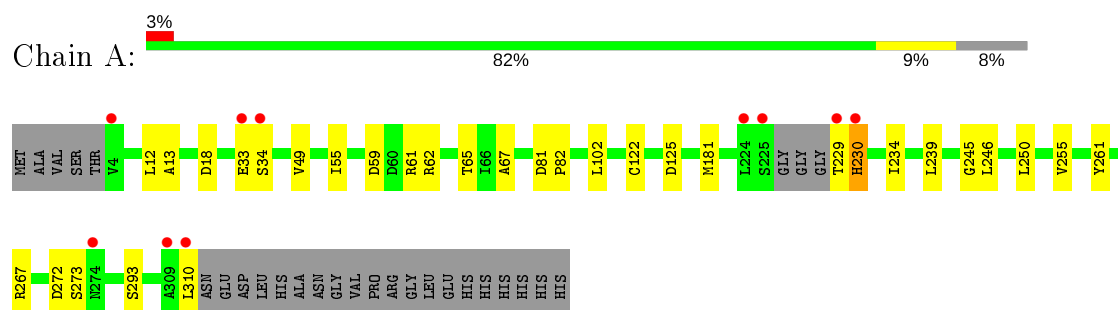
Continued from previous page...

Mol	Chain	Residues	Atoms		ZeroOcc	AltConf
7	C	161	Total 161	O 161	0	0
7	D	203	Total 203	O 203	0	0
7	E	23	Total 23	O 23	0	0

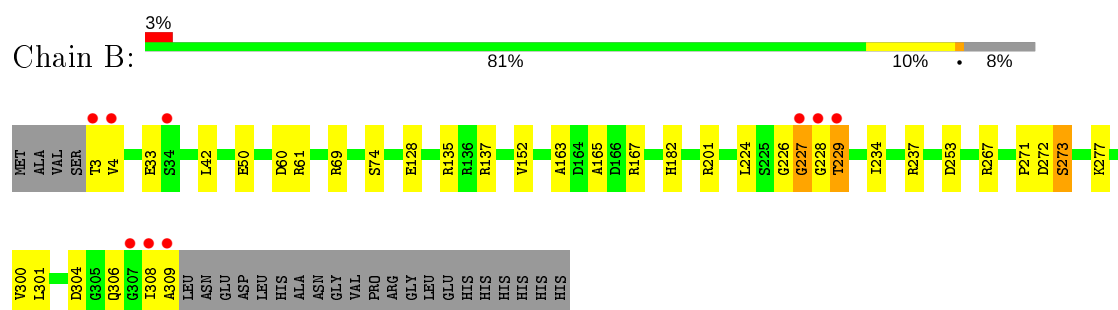
3 Residue-property plots [i](#)

These plots are drawn for all protein, RNA and DNA chains in the entry. The first graphic for a chain summarises the proportions of the various outlier classes displayed in the second graphic. The second graphic shows the sequence view annotated by issues in geometry and electron density. Residues are color-coded according to the number of geometric quality criteria for which they contain at least one outlier: green = 0, yellow = 1, orange = 2 and red = 3 or more. A red dot above a residue indicates a poor fit to the electron density ($RSRZ > 2$). Stretches of 2 or more consecutive residues without any outlier are shown as a green connector. Residues present in the sample, but not in the model, are shown in grey.

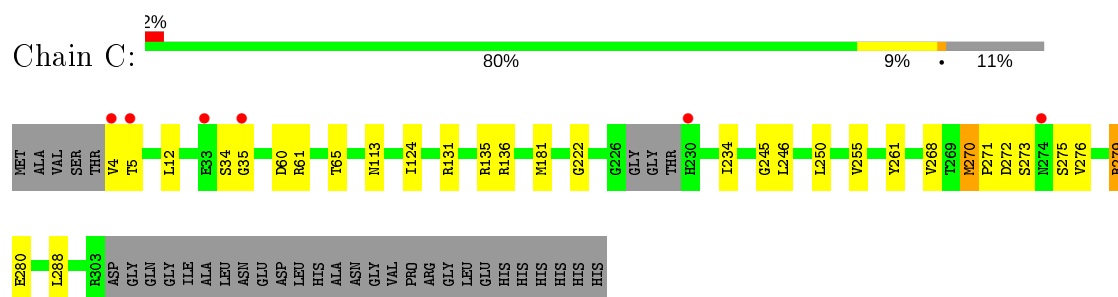
• Molecule 1: Tetrahydrodipicolinate N-succinyltransferase



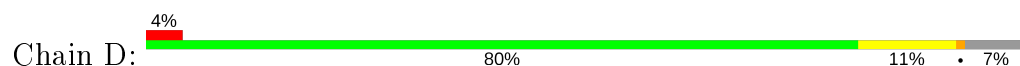
• Molecule 1: Tetrahydrodipicolinate N-succinyltransferase

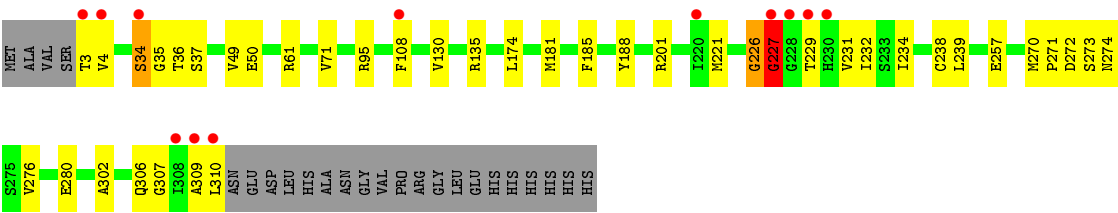


• Molecule 1: Tetrahydrodipicolinate N-succinyltransferase

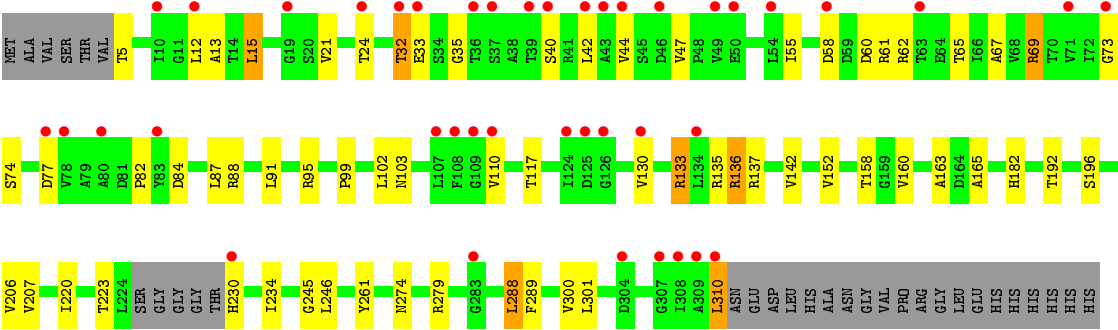


• Molecule 1: Tetrahydrodipicolinate N-succinyltransferase





● Molecule 1: Tetrahydronicotinate N-succinyltransferase



4 Data and refinement statistics

Property	Value	Source
Space group	I 21 3	Depositor
Cell constants a, b, c, α , β , γ	216.96Å 216.96Å 216.96Å 90.00° 90.00° 90.00°	Depositor
Resolution (Å)	30.00 – 1.97 57.98 – 1.97	Depositor EDS
% Data completeness (in resolution range)	99.9 (30.00-1.97) 99.9 (57.98-1.97)	Depositor EDS
R_{merge}	(Not available)	Depositor
R_{sym}	(Not available)	Depositor
$\langle I/\sigma(I) \rangle$ ¹	2.28 (at 1.97Å)	Xtriage
Refinement program	REFMAC 5.4.0069	Depositor
R, R_{free}	0.161 , 0.200 0.163 , 0.203	Depositor DCC
R_{free} test set	1488 reflections (1.25%)	wwPDB-VP
Wilson B-factor (Å ²)	26.2	Xtriage
Anisotropy	0.000	Xtriage
Bulk solvent k_{sol} (e/Å ³), B_{sol} (Å ²)	0.32 , 45.2	EDS
L-test for twinning ²	$\langle L \rangle = 0.50$, $\langle L^2 \rangle = 0.33$	Xtriage
Estimated twinning fraction	0.017 for -l,-k,-h	Xtriage
F_o, F_c correlation	0.96	EDS
Total number of atoms	11992	wwPDB-VP
Average B, all atoms (Å ²)	34.0	wwPDB-VP

Xtriage's analysis on translational NCS is as follows: *The largest off-origin peak in the Patterson function is 2.87% of the height of the origin peak. No significant pseudotranslation is detected.*

¹Intensities estimated from amplitudes.

²Theoretical values of $\langle |L| \rangle$, $\langle L^2 \rangle$ for acentric reflections are 0.5, 0.333 respectively for untwinned datasets, and 0.375, 0.2 for perfectly twinned datasets.

5 Model quality ⓘ

5.1 Standard geometry ⓘ

Bond lengths and bond angles in the following residue types are not validated in this section: ACY, NA, MG, SCA, MPD

The Z score for a bond length (or angle) is the number of standard deviations the observed value is removed from the expected value. A bond length (or angle) with $|Z| > 5$ is considered an outlier worth inspection. RMSZ is the root-mean-square of all Z scores of the bond lengths (or angles).

Mol	Chain	Bond lengths		Bond angles	
		RMSZ	# $ Z > 5$	RMSZ	# $ Z > 5$
1	A	0.87	0/2241	0.85	1/3049 (0.0%)
1	B	0.93	1/2271 (0.0%)	0.91	2/3090 (0.1%)
1	C	0.83	0/2216	0.86	4/3014 (0.1%)
1	D	0.94	1/2301 (0.0%)	0.93	3/3131 (0.1%)
1	E	0.55	0/2214	0.74	4/3011 (0.1%)
All	All	0.84	2/11243 (0.0%)	0.86	14/15295 (0.1%)

All (2) bond length outliers are listed below:

Mol	Chain	Res	Type	Atoms	Z	Observed(Å)	Ideal(Å)
1	D	130	VAL	CB-CG1	5.65	1.64	1.52
1	B	167	ARG	CG-CD	-5.18	1.39	1.51

The worst 5 of 14 bond angle outliers are listed below:

Mol	Chain	Res	Type	Atoms	Z	Observed(°)	Ideal(°)
1	E	135	ARG	NE-CZ-NH1	10.96	125.78	120.30
1	B	61	ARG	NE-CZ-NH1	-8.65	115.97	120.30
1	B	61	ARG	NE-CZ-NH2	7.90	124.25	120.30
1	E	135	ARG	NE-CZ-NH2	-7.88	116.36	120.30
1	E	133	ARG	NE-CZ-NH1	7.15	123.87	120.30

There are no chirality outliers.

There are no planarity outliers.

5.2 Too-close contacts ⓘ

In the following table, the Non-H and H(model) columns list the number of non-hydrogen atoms and hydrogen atoms in the chain respectively. The H(added) column lists the number of hydrogen

atoms added and optimized by MolProbity. The Clashes column lists the number of clashes within the asymmetric unit, whereas Symm-Clashes lists symmetry related clashes.

Mol	Chain	Non-H	H(model)	H(added)	Clashes	Symm-Clashes
1	A	2206	0	2216	36	0
1	B	2229	0	2244	39	0
1	C	2172	0	2194	40	0
1	D	2247	0	2268	37	0
1	E	2182	0	2188	62	0
2	A	86	0	46	2	0
2	B	31	0	11	1	0
2	E	52	0	31	2	0
3	A	8	0	14	1	0
3	B	8	0	14	1	0
3	D	8	0	14	0	0
4	A	4	0	0	0	0
4	B	1	0	0	0	0
4	D	2	0	0	0	0
4	E	3	0	0	0	0
5	A	1	0	0	0	0
5	B	1	0	0	0	0
5	D	1	0	0	0	0
5	E	1	0	0	0	0
6	B	4	0	3	2	0
6	C	4	0	3	2	0
6	D	4	0	3	0	0
7	A	176	0	0	4	0
7	B	174	0	0	2	0
7	C	161	0	0	6	0
7	D	203	0	0	8	0
7	E	23	0	0	1	0
All	All	11992	0	11249	210	0

The all-atom clashscore is defined as the number of clashes found per 1000 atoms (including hydrogen atoms). The all-atom clashscore for this structure is 9.

The worst 5 of 210 close contacts within the same asymmetric unit are listed below, sorted by their clash magnitude.

Atom-1	Atom-2	Interatomic distance (Å)	Clash overlap (Å)
1:C:12:LEU:HD11	1:C:65[B]:THR:CG2	1.60	1.30
1:D:4:VAL:HG13	1:D:34:SER:CB	1.74	1.18
1:E:32:THR:HG22	1:E:33:GLU:O	1.42	1.16
1:C:12:LEU:CD1	1:C:65[B]:THR:CG2	2.25	1.14

Continued on next page...

Continued from previous page...

Atom-1	Atom-2	Interatomic distance (Å)	Clash overlap (Å)
1:D:4:VAL:CG1	1:D:34:SER:HB3	1.76	1.14

There are no symmetry-related clashes.

5.3 Torsion angles [i](#)

5.3.1 Protein backbone [i](#)

In the following table, the Percentiles column shows the percent Ramachandran outliers of the chain as a percentile score with respect to all X-ray entries followed by that with respect to entries of similar resolution.

The Analysed column shows the number of residues for which the backbone conformation was analysed, and the total number of residues.

Mol	Chain	Analysed	Favoured	Allowed	Outliers	Percentiles	
1	A	301/332 (91%)	295 (98%)	6 (2%)	0	100	100
1	B	308/332 (93%)	298 (97%)	8 (3%)	2 (1%)	25	14
1	C	297/332 (90%)	293 (99%)	4 (1%)	0	100	100
1	D	312/332 (94%)	303 (97%)	8 (3%)	1 (0%)	41	29
1	E	297/332 (90%)	292 (98%)	5 (2%)	0	100	100
All	All	1515/1660 (91%)	1481 (98%)	31 (2%)	3 (0%)	47	38

All (3) Ramachandran outliers are listed below:

Mol	Chain	Res	Type
1	B	227	GLY
1	B	228	GLY
1	D	227	GLY

5.3.2 Protein sidechains [i](#)

In the following table, the Percentiles column shows the percent sidechain outliers of the chain as a percentile score with respect to all X-ray entries followed by that with respect to entries of similar resolution.

The Analysed column shows the number of residues for which the sidechain conformation was analysed, and the total number of residues.

Mol	Chain	Analysed	Rotameric	Outliers	Percentiles	
1	A	231/251 (92%)	229 (99%)	2 (1%)	78	77
1	B	233/251 (93%)	228 (98%)	5 (2%)	53	47
1	C	229/251 (91%)	227 (99%)	2 (1%)	78	77
1	D	237/251 (94%)	228 (96%)	9 (4%)	33	21
1	E	227/251 (90%)	215 (95%)	12 (5%)	22	10
All	All	1157/1255 (92%)	1127 (97%)	30 (3%)	47	37

5 of 30 residues with a non-rotameric sidechain are listed below:

Mol	Chain	Res	Type
1	D	234[A]	ILE
1	D	274	ASN
1	E	279	ARG
1	D	257	GLU
1	D	310	LEU

Some sidechains can be flipped to improve hydrogen bonding and reduce clashes. All (3) such sidechains are listed below:

Mol	Chain	Res	Type
1	A	274	ASN
1	B	230	HIS
1	D	230	HIS

5.3.3 RNA ⓘ

There are no RNA molecules in this entry.

5.4 Non-standard residues in protein, DNA, RNA chains ⓘ

There are no non-standard protein/DNA/RNA residues in this entry.

5.5 Carbohydrates ⓘ

There are no carbohydrates in this entry.

5.6 Ligand geometry ⓘ

Of 24 ligands modelled in this entry, 14 are monoatomic - leaving 10 for Mogul analysis.

In the following table, the Counts columns list the number of bonds (or angles) for which Mogul statistics could be retrieved, the number of bonds (or angles) that are observed in the model and the number of bonds (or angles) that are defined in the Chemical Component Dictionary. The Link column lists molecule types, if any, to which the group is linked. The Z score for a bond length (or angle) is the number of standard deviations the observed value is removed from the expected value. A bond length (or angle) with $|Z| > 2$ is considered an outlier worth inspection. RMSZ is the root-mean-square of all Z scores of the bond lengths (or angles).

Mol	Type	Chain	Res	Link	Bond lengths			Bond angles		
					Counts	RMSZ	$\# Z > 2$	Counts	RMSZ	$\# Z > 2$
6	ACY	D	331	-	1,3,3	1.96	0	0,3,3	0.00	-
2	SCA	A	331	-	28,33,57	1.05	3 (10%)	35,52,84	1.45	6 (17%)
3	MPD	A	340	-	7,7,7	0.28	0	9,10,10	0.54	0
2	SCA	E	331	-	42,53,57	1.09	5 (11%)	52,78,84	1.27	4 (7%)
6	ACY	C	331	-	1,3,3	2.39	1 (100%)	0,3,3	0.00	-
2	SCA	A	332	-	46,57,57	1.38	5 (10%)	58,84,84	1.83	13 (22%)
6	ACY	B	332	-	1,3,3	3.23	1 (100%)	0,3,3	0.00	-
2	SCA	B	331	-	28,33,57	1.12	3 (10%)	35,52,84	1.46	6 (17%)
3	MPD	B	340	-	7,7,7	0.38	0	9,10,10	0.80	0
3	MPD	D	340	-	7,7,7	0.43	0	9,10,10	0.77	0

In the following table, the Chirals column lists the number of chiral outliers, the number of chiral centers analysed, the number of these observed in the model and the number defined in the Chemical Component Dictionary. Similar counts are reported in the Torsion and Rings columns. '-' means no outliers of that kind were identified.

Mol	Type	Chain	Res	Link	Chirals	Torsions	Rings
2	SCA	A	331	-	-	11/17/37/72	0/3/3/3
3	MPD	A	340	-	-	2/5/5/5	-
2	SCA	E	331	-	-	13/44/64/72	0/3/3/3
2	SCA	A	332	-	-	7/50/72/72	0/3/3/3
2	SCA	B	331	-	-	5/17/37/72	0/3/3/3
3	MPD	B	340	-	-	1/5/5/5	-
3	MPD	D	340	-	-	2/5/5/5	-

The worst 5 of 18 bond length outliers are listed below:

Mol	Chain	Res	Type	Atoms	Z	Observed(Å)	Ideal(Å)
2	A	332	SCA	CS2-CS1	4.17	1.55	1.50
2	A	332	SCA	P3-O3'	4.03	1.66	1.59
2	A	332	SCA	CS1-S	-3.44	1.67	1.76
6	B	332	ACY	CH3-C	3.23	1.52	1.48

Continued on next page...

Continued from previous page...

Mol	Chain	Res	Type	Atoms	Z	Observed(Å)	Ideal(Å)
2	A	332	SCA	O4'-C1'	3.18	1.45	1.41

The worst 5 of 29 bond angle outliers are listed below:

Mol	Chain	Res	Type	Atoms	Z	Observed(°)	Ideal(°)
2	A	332	SCA	OS1-CS1-S	-5.77	115.12	122.61
2	A	332	SCA	CS3-CS2-CS1	5.32	120.41	112.41
2	A	332	SCA	CS2-CS1-S	4.41	118.60	113.46
2	A	332	SCA	CP9-CPA-CP7	4.17	116.05	108.82
2	B	331	SCA	P1-O6-P2	-3.94	119.31	132.83

There are no chirality outliers.

5 of 41 torsion outliers are listed below:

Mol	Chain	Res	Type	Atoms
2	E	331	SCA	C5'-O5'-P1-O11
2	E	331	SCA	CPB-O7-P2-O6
2	E	331	SCA	CP7-CPA-CPB-O7
2	E	331	SCA	CP9-CPA-CPB-O7
2	E	331	SCA	CP7-CP6-NP2-CP5

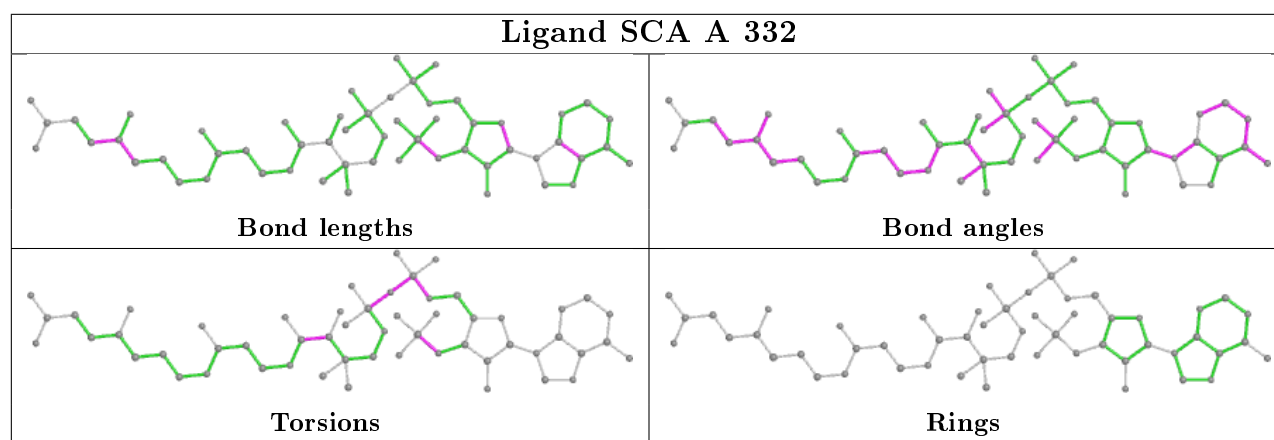
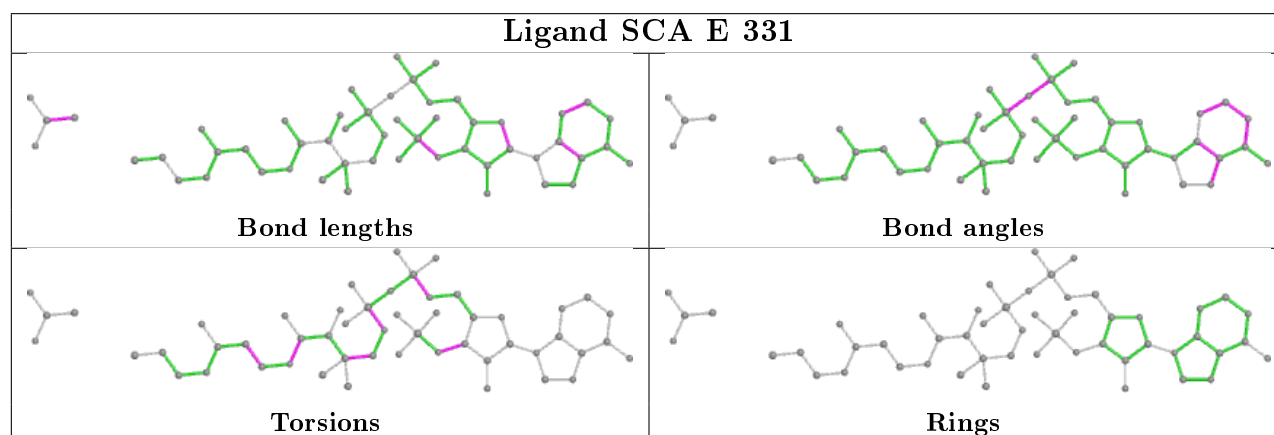
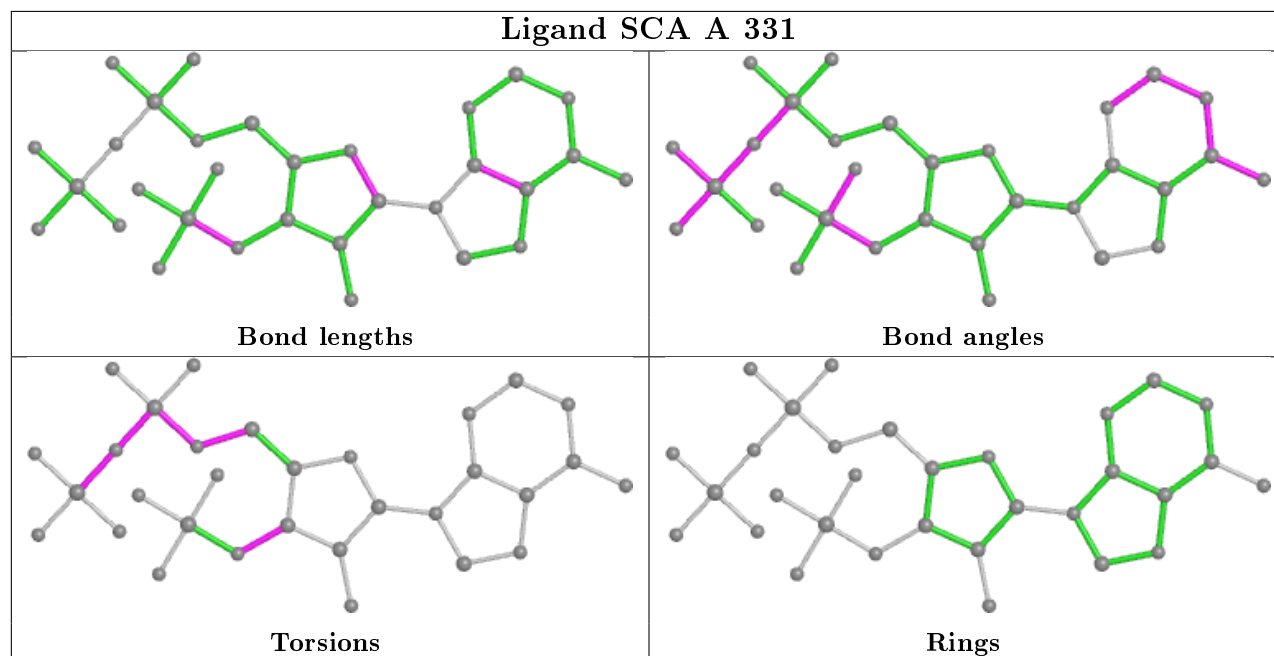
There are no ring outliers.

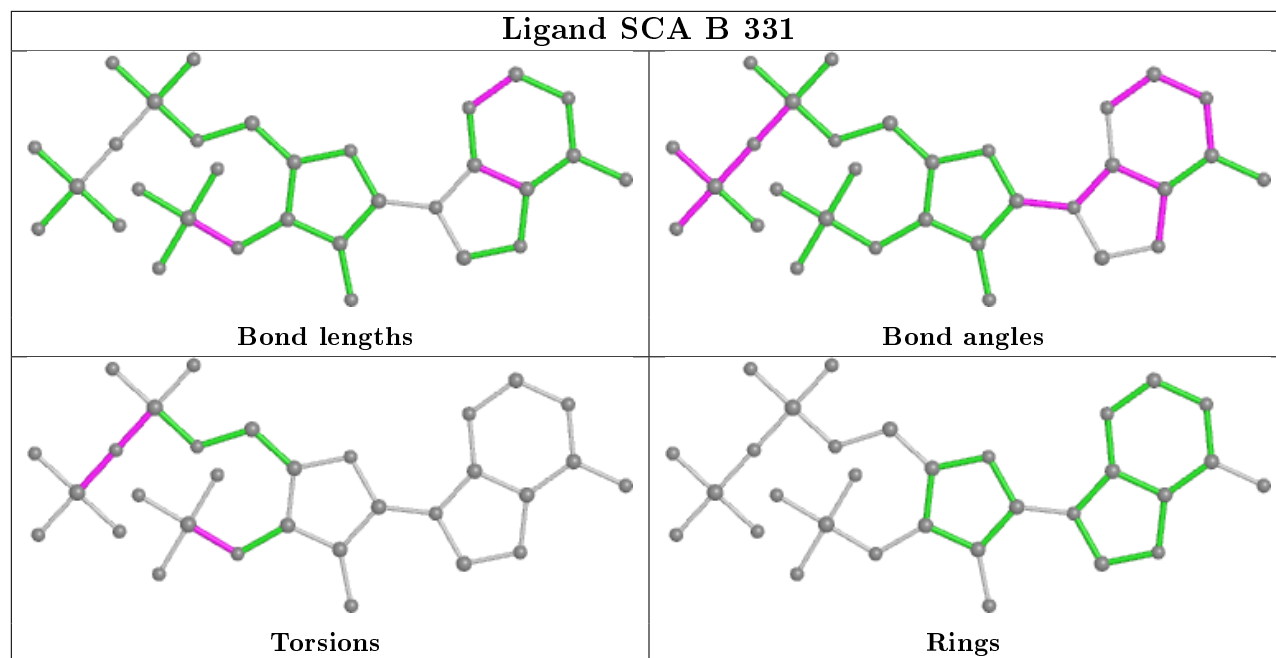
7 monomers are involved in 11 short contacts:

Mol	Chain	Res	Type	Clashes	Symm-Clashes
2	A	331	SCA	2	0
3	A	340	MPD	1	0
2	E	331	SCA	2	0
6	C	331	ACY	2	0
6	B	332	ACY	2	0
2	B	331	SCA	1	0
3	B	340	MPD	1	0

The following is a two-dimensional graphical depiction of Mogul quality analysis of bond lengths, bond angles, torsion angles, and ring geometry for all instances of the Ligand of Interest. In addition, ligands with molecular weight > 250 and outliers as shown on the validation Tables will also be included. For torsion angles, if less than 5% of the Mogul distribution of torsion angles is within 10 degrees of the torsion angle in question, then that torsion angle is considered an outlier. Any bond that is central to one or more torsion angles identified as an outlier by Mogul will be highlighted in the graph. For rings, the root-mean-square deviation (RMSD) between the ring in question and similar rings identified by Mogul is calculated over all ring torsion angles. If the average RMSD is greater than 60 degrees and the minimal RMSD between the ring in question and

any Mogul-identified rings is also greater than 60 degrees, then that ring is considered an outlier. The outliers are highlighted in purple. The color gray indicates Mogul did not find sufficient equivalents in the CSD to analyse the geometry.





5.7 Other polymers [i](#)

There are no such residues in this entry.

5.8 Polymer linkage issues [i](#)

There are no chain breaks in this entry.

6 Fit of model and data [i](#)

6.1 Protein, DNA and RNA chains [i](#)

In the following table, the column labelled ‘#RSRZ> 2’ contains the number (and percentage) of RSRZ outliers, followed by percent RSRZ outliers for the chain as percentile scores relative to all X-ray entries and entries of similar resolution. The OWAB column contains the minimum, median, 95th percentile and maximum values of the occupancy-weighted average B-factor per residue. The column labelled ‘Q< 0.9’ lists the number of (and percentage) of residues with an average occupancy less than 0.9.

Mol	Chain	Analysed	<RSRZ>	#RSRZ>2	OWAB(Å ²)	Q<0.9
1	A	304/332 (91%)	0.13	10 (3%) 46 49	26, 32, 43, 59	0
1	B	307/332 (92%)	0.10	9 (2%) 51 54	26, 32, 46, 69	0
1	C	297/332 (89%)	-0.18	6 (2%) 65 66	27, 32, 43, 60	0
1	D	308/332 (92%)	0.16	12 (3%) 39 42	26, 32, 46, 75	0
1	E	301/332 (90%)	0.74	41 (13%) 3 3	27, 33, 45, 69	0
All	All	1517/1660 (91%)	0.19	78 (5%) 28 30	26, 32, 45, 75	0

The worst 5 of 78 RSRZ outliers are listed below:

Mol	Chain	Res	Type	RSRZ
1	B	3	THR	8.2
1	C	4	VAL	7.0
1	D	228	GLY	6.1
1	D	3	THR	5.4
1	D	310	LEU	5.4

6.2 Non-standard residues in protein, DNA, RNA chains [i](#)

There are no non-standard protein/DNA/RNA residues in this entry.

6.3 Carbohydrates [i](#)

There are no carbohydrates in this entry.

6.4 Ligands [i](#)

In the following table, the Atoms column lists the number of modelled atoms in the group and the number defined in the chemical component dictionary. The B-factors column lists the minimum,

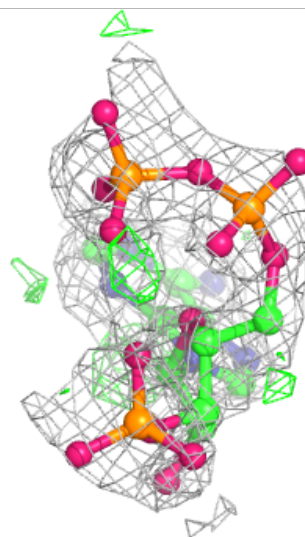
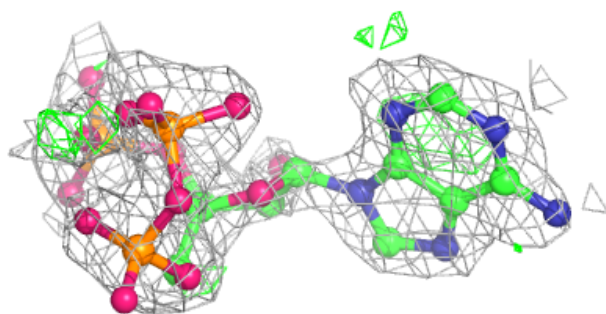
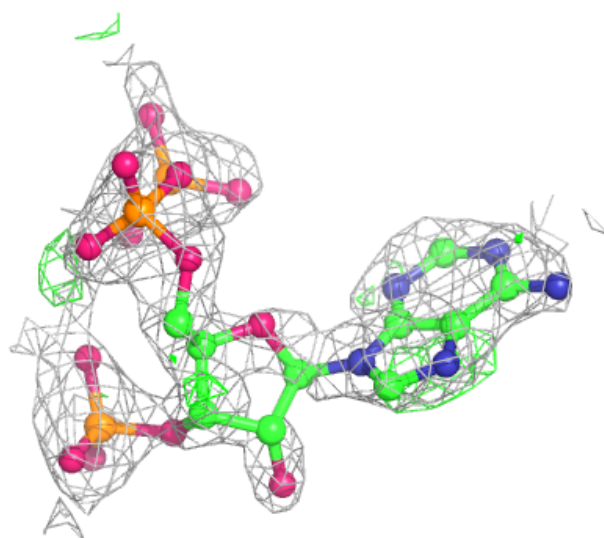
median, 95th percentile and maximum values of B factors of atoms in the group. The column labelled 'Q< 0.9' lists the number of atoms with occupancy less than 0.9.

Mol	Type	Chain	Res	Atoms	RSCC	RSR	B-factors(Å ²)	Q<0.9
2	SCA	A	331	31/55	0.84	0.16	26,41,53,55	31
2	SCA	B	331	31/55	0.86	0.14	23,38,50,55	31
4	MG	A	335	1/1	0.89	0.11	50,50,50,50	0
3	MPD	A	340	8/8	0.91	0.14	33,40,49,51	0
3	MPD	D	340	8/8	0.93	0.15	30,46,52,54	0
4	MG	A	336	1/1	0.93	0.06	45,45,45,45	0
2	SCA	E	331	52/55	0.93	0.25	38,57,68,73	0
4	MG	E	332	1/1	0.93	0.03	52,52,52,52	1
3	MPD	B	340	8/8	0.93	0.18	28,43,51,52	0
5	NA	A	337	1/1	0.93	0.17	36,36,36,36	0
6	ACY	D	331	4/4	0.95	0.10	31,34,36,36	0
6	ACY	B	332	4/4	0.95	0.15	28,32,34,34	0
5	NA	E	335	1/1	0.95	0.24	29,29,29,29	1
5	NA	B	334	1/1	0.95	0.11	39,39,39,39	1
2	SCA	A	332	55/55	0.96	0.18	28,39,46,54	0
4	MG	B	333	1/1	0.96	0.08	48,48,48,48	0
6	ACY	C	331	4/4	0.97	0.12	33,35,37,37	0
4	MG	A	334	1/1	0.97	0.10	29,29,29,29	0
4	MG	A	333	1/1	0.98	0.04	23,23,23,23	0
4	MG	E	334	1/1	0.99	0.06	38,38,38,38	1
4	MG	D	333	1/1	0.99	0.14	51,51,51,51	1
4	MG	D	332	1/1	0.99	0.06	21,21,21,21	1
5	NA	D	334	1/1	0.99	0.06	39,39,39,39	1
4	MG	E	333	1/1	1.00	0.02	45,45,45,45	1

The following is a graphical depiction of the model fit to experimental electron density of all instances of the Ligand of Interest. In addition, ligands with molecular weight > 250 and outliers as shown on the geometry validation Tables will also be included. Each fit is shown from different orientation to approximate a three-dimensional view.

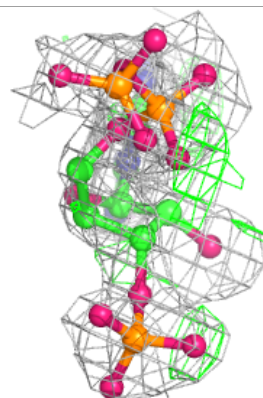
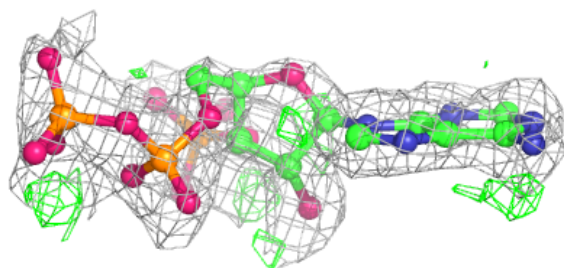
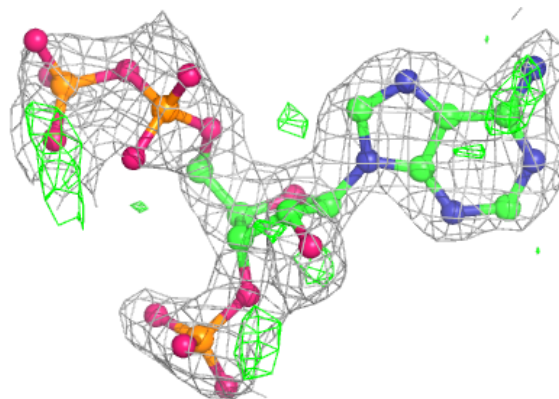
Electron density around SCA A 331:

2mF_o-DF_c (at 0.7 rmsd) in gray
mF_o-DF_c (at 3 rmsd) in purple (negative)
and green (positive)

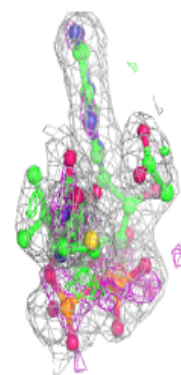
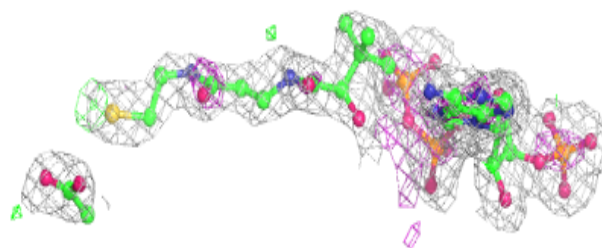
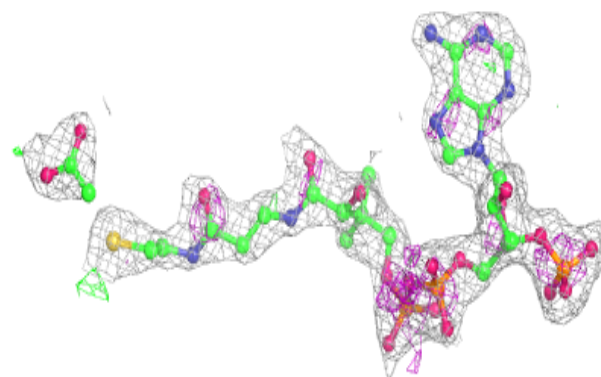


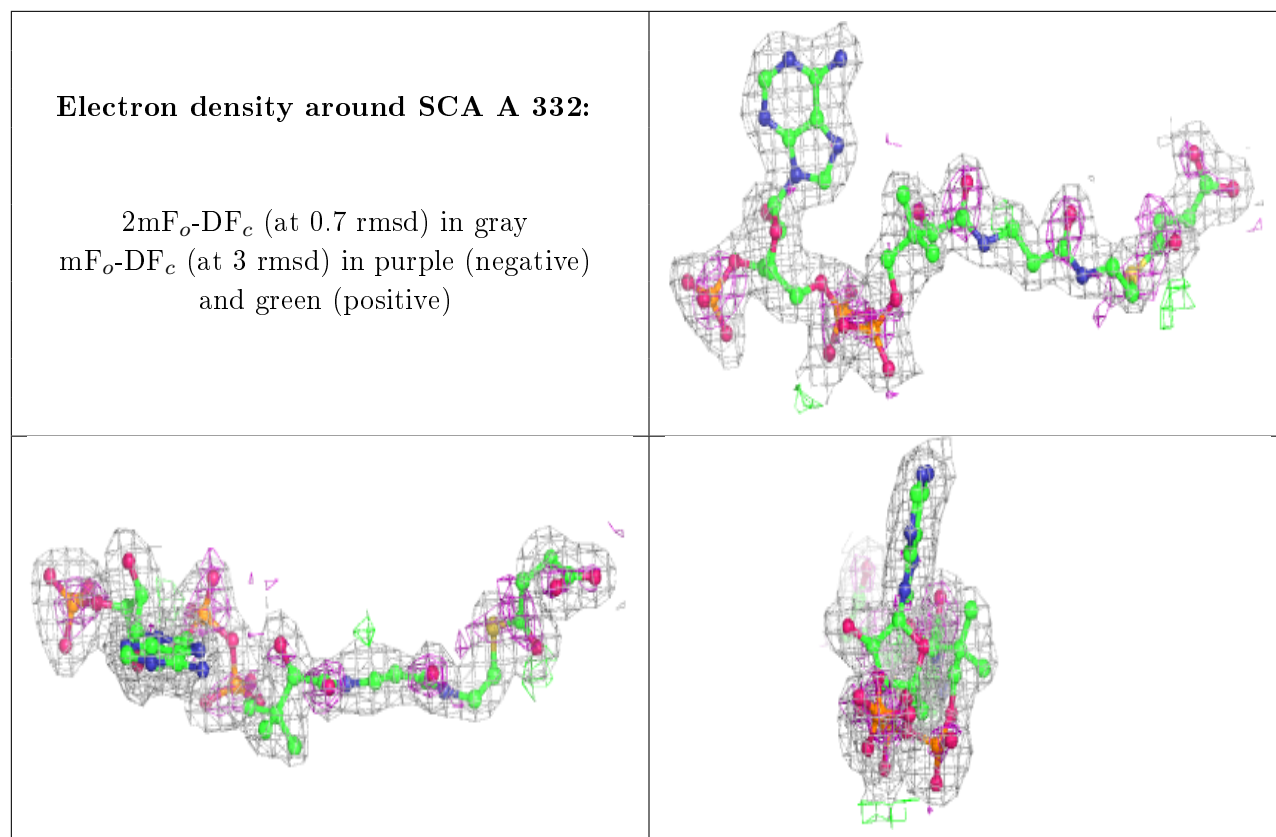
Electron density around SCA B 331:

$2mF_o-DF_c$ (at 0.7 rmsd) in gray
 mF_o-DF_c (at 3 rmsd) in purple (negative)
and green (positive)

**Electron density around SCA E 331:**

$2mF_o-DF_c$ (at 0.7 rmsd) in gray
 mF_o-DF_c (at 3 rmsd) in purple (negative)
and green (positive)





6.5 Other polymers [i](#)

There are no such residues in this entry.