



# Full wwPDB X-ray Structure Validation Report ⓘ

May 22, 2020 – 10:55 pm BST

PDB ID : 4FSJ  
Title : Crystal structure of the virus like particle of Flock House virus  
Authors : Speir, J.A.; Chen, Z.; Reddy, V.S.; Johnson, J.E.  
Deposited on : 2012-06-27  
Resolution : 3.50 Å(reported)

This is a Full wwPDB X-ray Structure Validation Report for a publicly released PDB entry.

We welcome your comments at [validation@mail.wwpdb.org](mailto:validation@mail.wwpdb.org)

A user guide is available at

<https://www.wwpdb.org/validation/2017/XrayValidationReportHelp>

with specific help available everywhere you see the ⓘ symbol.

---

The following versions of software and data (see [references ⓘ](#)) were used in the production of this report:

MolProbity : 4.02b-467  
Mogul : 1.8.5 (274361), CSD as541be (2020)  
Xtriage (Phenix) : 1.13  
EDS : 2.11  
Percentile statistics : 20191225.v01 (using entries in the PDB archive December 25th 2019)  
Refmac : 5.8.0158  
CCP4 : 7.0.044 (Gargrove)  
Ideal geometry (proteins) : Engh & Huber (2001)  
Ideal geometry (DNA, RNA) : Parkinson et al. (1996)  
Validation Pipeline (wwPDB-VP) : 2.11



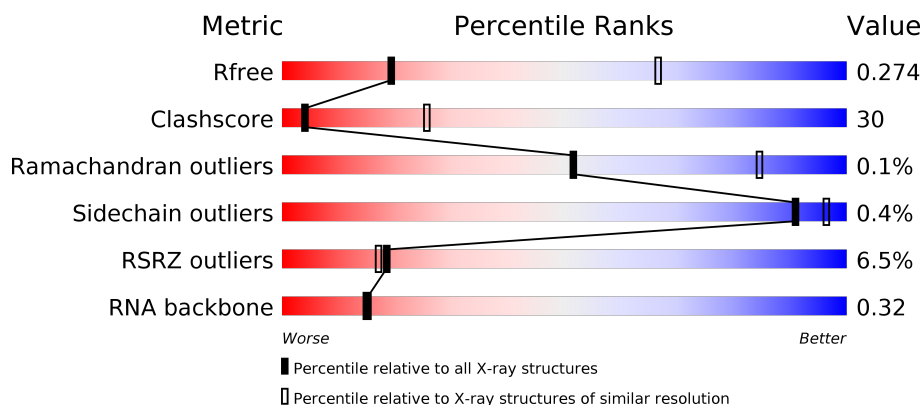
# 1 Overall quality at a glance

The following experimental techniques were used to determine the structure:

## *X-RAY DIFFRACTION*

The reported resolution of this entry is 3.50 Å.

Percentile scores (ranging between 0-100) for global validation metrics of the entry are shown in the following graphic. The table shows the number of entries on which the scores are based.



Metric	Whole archive (#Entries)	Similar resolution (#Entries, resolution range(Å))
$R_{free}$	130704	1659 (3.60-3.40)
Clashscore	141614	1036 (3.58-3.42)
Ramachandran outliers	138981	1005 (3.58-3.42)
Sidechain outliers	138945	1006 (3.58-3.42)
RSRZ outliers	127900	1559 (3.60-3.40)
RNA backbone	3102	1002 (4.00-3.00)

The table below summarises the geometric issues observed across the polymeric chains and their fit to the electron density. The red, orange, yellow and green segments on the lower bar indicate the fraction of residues that contain outliers for  $\geq 3$ , 2, 1 and 0 types of geometric quality criteria respectively. A grey segment represents the fraction of residues that are not modelled. The numeric value for each fraction is indicated below the corresponding segment, with a dot representing fractions  $\leq 5\%$ . The upper red bar (where present) indicates the fraction of residues that have poor fit to the electron density. The numeric value is given above the bar.

Mol	Chain	Length	Quality of chain
1	A	363	<div> <div>2%</div> <div> <div></div> <div>47%</div> <div>39%</div> <div>13%</div> </div> </div>
1	B	363	<div> <div>%</div> <div> <div></div> <div>50%</div> <div>34%</div> <div>15%</div> </div> </div>
1	C	363	<div> <div>2%</div> <div> <div></div> <div>50%</div> <div>34%</div> <div>15%</div> </div> </div>
2	D	44	<div> <div>20%</div> <div> <div></div> <div>20%</div> <div>20%</div> <div>59%</div> </div> </div>

*Continued on next page...*



Continued from previous page...

Mol	Chain	Length	Quality of chain
2	E	44	<div><div><div></div><div></div><div></div></div><div>32%27%11%61%</div></div>
2	F	44	<div><div><div></div><div></div><div></div></div><div>18%30%14%57%</div></div>
3	R	14	<div><div><div></div><div></div><div></div></div><div>100%50%43%7%</div></div>



## 2 Entry composition [i](#)

There are 7 unique types of molecules in this entry. The entry contains 7859 atoms, of which 0 are hydrogens and 0 are deuteriums.

In the tables below, the ZeroOcc column contains the number of atoms modelled with zero occupancy, the AltConf column contains the number of residues with at least one atom in alternate conformation and the Trace column contains the number of residues modelled with at most 2 atoms.

- Molecule 1 is a protein called Capsid protein beta.

Mol	Chain	Residues	Atoms					ZeroOcc	AltConf	Trace
1	A	315	Total	C	N	O	S	0	0	0
			2359	1501	388	460	10			
1	B	309	Total	C	N	O	S	0	0	0
			2312	1473	379	450	10			
1	C	309	Total	C	N	O	S	0	0	0
			2312	1473	379	450	10			

- Molecule 2 is a protein called Capsid protein Gamma.

Mol	Chain	Residues	Atoms					ZeroOcc	AltConf	Trace
2	D	18	Total	C	N	O	S	0	0	0
			135	86	24	24	1			
2	E	17	Total	C	N	O	S	0	0	0
			130	83	23	23	1			
2	F	19	Total	C	N	O	S	0	0	0
			141	89	25	26	1			

- Molecule 3 is a RNA chain called Random cellular RNA fragments.

Mol	Chain	Residues	Atoms					ZeroOcc	AltConf	Trace
3	R	14	Total	C	N	O	P	0	0	0
			282	127	34	107	14			

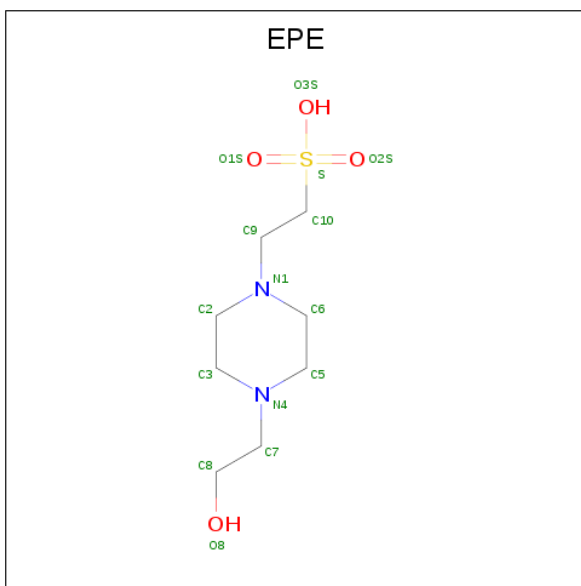
- Molecule 4 is CALCIUM ION (three-letter code: CA) (formula: Ca).

Mol	Chain	Residues	Atoms		ZeroOcc	AltConf
4	B	1	Total	Ca	0	0
			1	1		
4	A	3	Total	Ca	0	0
			3	3		

- Molecule 5 is 4-(2-HYDROXYETHYL)-1-PIPERAZINE ETHANESULFONIC ACID



(three-letter code: EPE) (formula: C<sub>8</sub>H<sub>18</sub>N<sub>2</sub>O<sub>4</sub>S).



Mol	Chain	Residues	Atoms					ZeroOcc	AltConf
5	A	1	Total	C	N	O	S	0	0
			15	8	2	4	1		
5	B	1	Total	C	N	O	S	0	0
			15	8	2	4	1		
5	C	1	Total	C	N	O	S	0	0
			15	8	2	4	1		

- Molecule 6 is CHLORIDE ION (three-letter code: CL) (formula: Cl).

Mol	Chain	Residues	Atoms		ZeroOcc	AltConf
6	B	1	Total	Cl	0	0
			1	1		

- Molecule 7 is water.

Mol	Chain	Residues	Atoms		ZeroOcc	AltConf
7	A	43	Total	O	0	0
			43	43		
7	D	6	Total	O	0	0
			6	6		
7	B	50	Total	O	0	0
			50	50		
7	E	3	Total	O	0	0
			3	3		
7	C	35	Total	O	0	0
			35	35		

*Continued on next page...*



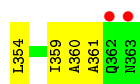
*Continued from previous page...*

Mol	Chain	Residues	Atoms		ZeroOcc	AltConf
7	F	1	Total	O	0	0
			1	1		

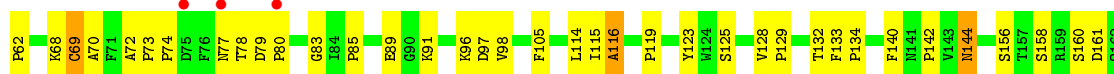
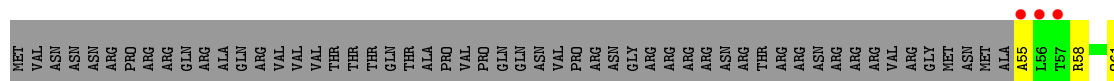




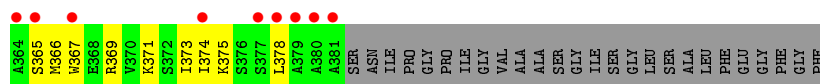




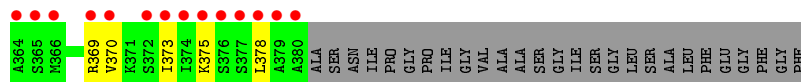
- Molecule 1: Capsid protein beta



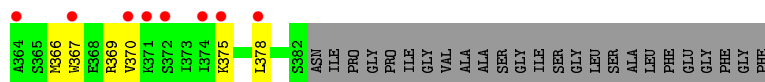
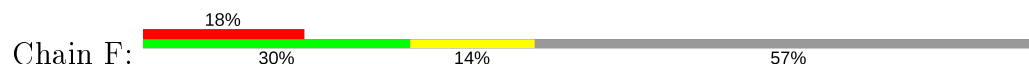
- Molecule 2: Capsid protein Gamma



- Molecule 2: Capsid protein Gamma



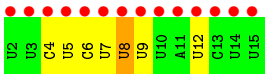
- Molecule 2: Capsid protein Gamma



- Molecule 3: Random cellular RNA fragments









## 4 Data and refinement statistics

Property	Value	Source
Space group	H 3	Depositor
Cell constants a, b, c, $\alpha$ , $\beta$ , $\gamma$	326.48Å 326.48Å 772.40Å 90.00° 90.00° 120.00°	Depositor
Resolution (Å)	40.00 – 3.50 49.82 – 3.50	Depositor EDS
% Data completeness (in resolution range)	79.9 (40.00-3.50) 80.0 (49.82-3.50)	Depositor EDS
$R_{merge}$	0.12	Depositor
$R_{sym}$	(Not available)	Depositor
$\langle I/\sigma(I) \rangle$ <sup>1</sup>	1.62 (at 3.48Å)	Xtriage
Refinement program	CNS	Depositor
R, $R_{free}$	0.262 , (Not available) 0.270 , 0.274	Depositor DCC
$R_{free}$ test set	15376 reflections (4.97%)	wwPDB-VP
Wilson B-factor (Å <sup>2</sup> )	87.1	Xtriage
Anisotropy	0.017	Xtriage
Bulk solvent $k_{sol}$ (e/Å <sup>3</sup> ), $B_{sol}$ (Å <sup>2</sup> )	0.29 , 110.5	EDS
L-test for twinning <sup>2</sup>	$\langle  L  \rangle = 0.53$ , $\langle L^2 \rangle = 0.37$	Xtriage
Estimated twinning fraction	0.000 for -h,1/3*h-1/3*k-1/3*l,-4/3*h-8/3*k +1/3*l 0.000 for -1/3*h+1/3*k+1/3*l,-k,8/3*h+4/ 3*k+1/3*l 0.000 for -2/3*h-1/3*k-1/3*l,-1/3*h-2/3*k+ 1/3*l,-4/3*h+4/3*k+1/3*l 0.000 for 1/3*h+2/3*k-1/3*l,-k,-8/3*h-4/3* k-1/3*l 0.000 for -1/3*h-2/3*k+1/3*l,-2/3*h-1/3*k- 1/3*l,4/3*h-4/3*k-1/3*l 0.000 for -h,2/3*h+1/3*k+1/3*l,4/3*h+8/3 *k-1/3*l 0.000 for h,-h-k,-l	Xtriage
$F_o, F_c$ correlation	0.89	EDS
Total number of atoms	7859	wwPDB-VP
Average B, all atoms (Å <sup>2</sup> )	118.0	wwPDB-VP

Xtriage's analysis on translational NCS is as follows: *The largest off-origin peak in the Patterson function is 1.64% of the height of the origin peak. No significant pseudotranslation is detected.*

<sup>1</sup>Intensities estimated from amplitudes.

<sup>2</sup>Theoretical values of  $\langle |L| \rangle$ ,  $\langle L^2 \rangle$  for acentric reflections are 0.5, 0.333 respectively for untwinned datasets, and 0.375, 0.2 for perfectly twinned datasets.



## 5 Model quality

### 5.1 Standard geometry

Bond lengths and bond angles in the following residue types are not validated in this section: CA, EPE, CL

The Z score for a bond length (or angle) is the number of standard deviations the observed value is removed from the expected value. A bond length (or angle) with  $|Z| > 5$  is considered an outlier worth inspection. RMSZ is the root-mean-square of all Z scores of the bond lengths (or angles).

Mol	Chain	Bond lengths		Bond angles	
		RMSZ	# Z  >5	RMSZ	# Z  >5
1	A	0.59	0/2422	0.77	0/3316
1	B	0.57	0/2374	0.77	0/3250
1	C	0.59	0/2374	0.75	0/3250
2	D	0.59	0/136	0.60	0/181
2	E	0.52	0/131	0.56	0/174
2	F	0.49	0/142	0.48	0/189
3	R	0.30	0/310	0.68	0/477
All	All	0.57	0/7889	0.75	0/10837

Chiral center outliers are detected by calculating the chiral volume of a chiral center and verifying if the center is modelled as a planar moiety or with the opposite hand. A planarity outlier is detected by checking planarity of atoms in a peptide group, atoms in a mainchain group or atoms of a sidechain that are expected to be planar.

Mol	Chain	#Chirality outliers	#Planarity outliers
1	C	0	3

There are no bond length outliers.

There are no bond angle outliers.

There are no chirality outliers.

All (3) planarity outliers are listed below:

Mol	Chain	Res	Type	Group
1	C	116	ALA	Peptide
1	C	270	GLY	Peptide
1	C	321	TYR	Sidechain



## 5.2 Too-close contacts ⓘ

In the following table, the Non-H and H(model) columns list the number of non-hydrogen atoms and hydrogen atoms in the chain respectively. The H(added) column lists the number of hydrogen atoms added and optimized by MolProbity. The Clashes column lists the number of clashes within the asymmetric unit, whereas Symm-Clashes lists symmetry related clashes.

Mol	Chain	Non-H	H(model)	H(added)	Clashes	Symm-Clashes
1	A	2359	0	2288	171	0
1	B	2312	0	2246	149	0
1	C	2312	0	2246	154	0
2	D	135	0	145	7	0
2	E	130	0	140	5	0
2	F	141	0	150	10	0
3	R	282	0	145	8	0
4	A	3	0	0	0	0
4	B	1	0	0	0	0
5	A	15	0	18	1	0
5	B	15	0	18	4	0
5	C	15	0	18	0	0
6	B	1	0	0	0	0
7	A	43	0	0	1	0
7	B	50	0	0	2	0
7	C	35	0	0	0	0
7	D	6	0	0	0	0
7	E	3	0	0	0	0
7	F	1	0	0	0	0
All	All	7859	0	7414	456	0

The all-atom clashscore is defined as the number of clashes found per 1000 atoms (including hydrogen atoms). The all-atom clashscore for this structure is 30.

All (456) close contacts within the same asymmetric unit are listed below, sorted by their clash magnitude.

Atom-1	Atom-2	Interatomic distance (Å)	Clash overlap (Å)
1:C:116:ALA:HB2	1:C:296:THR:CG2	1.42	1.49
3:R:7:U:H2'	3:R:8:U:H4'	1.29	1.11
1:C:116:ALA:CB	1:C:296:THR:HG23	1.83	1.09
1:B:218:VAL:HG13	1:C:160:SER:HB2	1.37	1.06
1:A:214:VAL:HG11	1:A:264:PRO:HG3	1.33	1.04
1:B:336:SER:OG	1:B:337:PRO:HD2	1.55	1.04
1:A:103:ILE:HD11	1:A:105:PHE:CZ	1.94	1.02
1:C:116:ALA:HB2	1:C:296:THR:HG21	1.43	1.01

*Continued on next page...*



*Continued from previous page...*

Atom-1	Atom-2	Interatomic distance (Å)	Clash overlap (Å)
1:B:359:ILE:HG22	1:B:361:ALA:H	1.22	1.01
1:C:116:ALA:CB	1:C:296:THR:CG2	2.39	1.01
1:C:362:GLN:NE2	2:F:369:ARG:HH22	1.56	1.01
1:A:168:TYR:CE1	1:A:319:ILE:HD11	1.97	0.99
1:B:239:VAL:N	1:B:360:ALA:HB2	1.78	0.97
1:C:116:ALA:HB2	1:C:296:THR:HG23	1.02	0.97
1:C:362:GLN:NE2	2:F:369:ARG:NH2	2.13	0.96
1:A:326:ASN:HD22	1:C:222:GLY:HA2	1.31	0.96
1:B:115:ILE:HD11	1:B:173:VAL:HG21	1.50	0.94
1:A:103:ILE:CD1	1:A:105:PHE:CZ	2.51	0.94
1:B:84:ILE:C	1:B:337:PRO:HG2	1.87	0.94
1:B:336:SER:OG	1:B:337:PRO:CD	2.16	0.93
1:A:74:PRO:HG3	1:A:316:TRP:CZ2	2.03	0.93
1:A:181:LEU:O	1:A:184:PHE:CD2	2.21	0.92
1:A:96:LYS:HD3	1:A:318:CYS:SG	2.09	0.92
1:C:144:ASN:H	1:C:144:ASN:HD22	1.10	0.92
1:A:176:TYR:O	1:A:311:ALA:HB1	1.69	0.91
1:A:74:PRO:HG3	1:A:316:TRP:CH2	2.06	0.90
3:R:7:U:C2'	3:R:8:U:H4'	2.02	0.90
1:C:217:LEU:H	1:C:274:GLN:HE21	1.15	0.89
1:C:144:ASN:H	1:C:144:ASN:ND2	1.72	0.87
1:B:115:ILE:HD13	1:B:173:VAL:HB	1.56	0.87
1:C:115:ILE:CD1	1:C:173:VAL:HB	2.05	0.86
1:A:103:ILE:HD11	1:A:105:PHE:HZ	1.40	0.86
1:A:240:PHE:HE1	1:A:316:TRP:CZ3	1.94	0.85
1:B:87:ARG:HG3	1:B:87:ARG:HH11	1.38	0.85
1:A:300:ARG:HG2	1:A:300:ARG:HH11	1.42	0.84
1:A:326:ASN:HD22	1:C:222:GLY:CA	1.90	0.83
3:R:7:U:H2'	3:R:8:U:C4'	2.07	0.83
1:C:362:GLN:HE22	2:F:369:ARG:NH2	1.77	0.83
1:C:156:SER:HB2	1:C:258:GLY:HA2	1.58	0.82
1:A:96:LYS:CD	1:A:318:CYS:SG	2.67	0.82
1:A:228:PRO:HG2	1:B:331:GLN:HE21	1.44	0.82
1:B:218:VAL:HG13	1:C:160:SER:CB	2.10	0.81
1:B:172:ASN:HB2	1:B:316:TRP:HE3	1.46	0.80
1:A:214:VAL:HG12	1:A:215:HIS:N	1.96	0.80
1:B:263:PRO:HD2	1:B:277:THR:HG23	1.62	0.80
1:C:346:GLU:O	1:C:350:VAL:HG23	1.80	0.80
1:B:115:ILE:CD1	1:B:173:VAL:HB	2.11	0.79
1:A:181:LEU:O	1:A:184:PHE:CE2	2.36	0.79
1:A:123:TYR:CZ	1:A:143:VAL:HG21	2.17	0.79

*Continued on next page...*



*Continued from previous page...*

Atom-1	Atom-2	Interatomic distance (Å)	Clash overlap (Å)
1:B:196:LYS:HE3	1:C:165:SER:OG	1.83	0.79
1:B:115:ILE:HD12	1:B:173:VAL:HG11	1.64	0.78
1:B:72:ALA:HB1	1:B:75:ASP:OD2	1.84	0.78
1:C:73:PRO:HG3	1:C:172:ASN:ND2	2.00	0.77
1:C:144:ASN:ND2	1:C:144:ASN:N	2.30	0.77
1:B:115:ILE:HD11	1:B:173:VAL:CG2	2.13	0.77
1:A:86:ASP:HB2	7:A:526:HOH:O	1.85	0.76
1:B:239:VAL:H	1:B:360:ALA:HB2	1.49	0.75
1:C:115:ILE:HD13	1:C:173:VAL:HB	1.69	0.75
1:B:115:ILE:CD1	1:B:173:VAL:CB	2.64	0.75
1:A:217:LEU:HB2	1:A:220:LEU:HD11	1.69	0.74
1:B:147:GLY:HA2	7:B:511:HOH:O	1.88	0.74
1:C:176:TYR:O	1:C:311:ALA:HB1	1.88	0.73
1:C:345:GLN:NE2	1:C:345:GLN:HA	2.02	0.73
1:A:168:TYR:CZ	1:A:319:ILE:HD11	2.23	0.72
1:C:180:ASN:HD21	1:C:183:GLN:HG3	1.55	0.72
1:B:84:ILE:O	1:B:337:PRO:HG2	1.87	0.72
1:C:128:VAL:HG12	1:C:132:THR:OG1	1.90	0.72
1:B:172:ASN:HB2	1:B:316:TRP:CE3	2.24	0.71
1:C:362:GLN:HE21	2:F:369:ARG:HH22	1.34	0.71
1:A:59:LEU:HD23	1:A:342:VAL:HB	1.72	0.71
1:A:263:PRO:HD2	1:A:277:THR:HG23	1.73	0.70
1:C:263:PRO:HB3	1:C:272:THR:HG21	1.73	0.70
1:B:83:GLY:C	1:B:337:PRO:HG3	2.12	0.70
1:C:61:GLN:HB3	1:C:62:PRO:HD3	1.72	0.70
1:B:70:ALA:HA	1:B:170:SER:HB3	1.72	0.70
1:C:115:ILE:HD11	1:C:173:VAL:HG21	1.74	0.70
1:A:214:VAL:CG1	1:A:215:HIS:N	2.54	0.70
1:A:183:GLN:HG3	1:A:308:VAL:HB	1.74	0.69
1:B:87:ARG:NH1	1:B:87:ARG:HG3	2.07	0.69
1:C:270:GLY:HA2	1:C:273:GLY:H	1.57	0.69
1:B:238:GLY:HA3	1:B:360:ALA:CB	2.23	0.69
1:A:79:ASP:OD2	1:A:96:LYS:HB2	1.92	0.69
1:B:238:GLY:HA3	1:B:360:ALA:HB2	1.74	0.69
1:C:115:ILE:CD1	1:C:173:VAL:CB	2.70	0.69
1:A:103:ILE:HD12	1:A:105:PHE:CZ	2.27	0.68
1:A:180:ASN:ND2	1:A:183:GLN:NE2	2.42	0.68
1:C:217:LEU:N	1:C:274:GLN:HE21	1.91	0.68
1:A:128:VAL:HB	1:A:129:PRO:HD2	1.76	0.68
1:A:176:TYR:O	1:A:311:ALA:CB	2.41	0.68
1:C:217:LEU:H	1:C:274:GLN:NE2	1.90	0.68

*Continued on next page...*



*Continued from previous page...*

Atom-1	Atom-2	Interatomic distance (Å)	Clash overlap (Å)
2:D:365:SER:O	2:D:369:ARG:HG3	1.94	0.67
1:B:183:GLN:HB2	1:B:308:VAL:HB	1.76	0.67
1:A:240:PHE:CE1	1:A:316:TRP:CZ3	2.80	0.67
1:B:251:GLU:HB3	7:B:504:HOH:O	1.93	0.67
1:B:346:GLU:O	1:B:350:VAL:HG23	1.94	0.67
1:C:172:ASN:HB2	1:C:316:TRP:HE3	1.60	0.67
1:A:188:ILE:HG13	1:A:235:PHE:HA	1.77	0.67
1:A:155:THR:HG22	1:A:157:THR:H	1.60	0.67
1:A:220:LEU:O	1:A:223:VAL:HG23	1.96	0.66
1:B:359:ILE:HG22	1:B:361:ALA:N	2.03	0.66
1:A:180:ASN:HD21	1:A:183:GLN:HB3	1.61	0.66
1:A:172:ASN:HB2	1:A:316:TRP:HE3	1.61	0.65
1:B:220:LEU:O	1:B:223:VAL:HG23	1.96	0.65
1:B:229:ASP:OD1	1:C:91:LYS:HE3	1.96	0.65
1:B:227:GLY:HA3	1:C:325:PRO:HB3	1.78	0.65
1:A:155:THR:HB	1:A:158:SER:OG	1.96	0.65
1:B:264:PRO:HG2	1:B:267:VAL:HG21	1.78	0.65
1:A:89:GLU:HA	1:A:336:SER:HB3	1.79	0.65
1:C:115:ILE:HD11	1:C:173:VAL:CG2	2.26	0.65
1:C:79:ASP:OD1	1:C:96:LYS:NZ	2.30	0.65
1:C:363:ASN:O	1:C:363:ASN:ND2	2.30	0.65
1:A:203:PRO:HB3	1:B:265:ALA:HB3	1.79	0.64
1:A:228:PRO:HD2	1:B:330:TYR:CD2	2.32	0.64
1:B:56:LEU:HG	2:E:375:LYS:HE2	1.79	0.64
1:C:77:ASN:O	1:C:78:THR:HG23	1.96	0.64
1:A:57:THR:HG22	1:A:58:ARG:H	1.63	0.64
1:A:78:THR:HG22	1:A:79:ASP:N	2.11	0.64
1:A:300:ARG:HG2	1:A:300:ARG:NH1	2.13	0.63
1:B:204:VAL:HG12	1:B:206:THR:HG23	1.80	0.63
1:C:263:PRO:HD2	1:C:277:THR:HG23	1.79	0.63
1:A:172:ASN:HB2	1:A:316:TRP:CE3	2.33	0.63
1:B:61:GLN:HB3	1:B:62:PRO:HD3	1.80	0.63
1:A:106:THR:CG2	1:A:109:GLN:HG3	2.28	0.63
1:B:70:ALA:HA	1:B:170:SER:CB	2.27	0.63
1:A:73:PRO:HG2	1:A:172:ASN:ND2	2.14	0.63
1:A:86:ASP:OD2	1:C:248:PRO:HB3	1.99	0.63
1:C:142:PRO:HG3	1:C:280:SER:HA	1.80	0.63
1:A:263:PRO:HG2	1:A:269:LEU:HA	1.81	0.63
1:B:238:GLY:C	1:B:360:ALA:HB2	2.19	0.63
1:A:57:THR:HG22	1:A:58:ARG:N	2.14	0.62
1:C:322:ARG:HB3	1:C:322:ARG:NH1	2.14	0.62

*Continued on next page...*



*Continued from previous page...*

Atom-1	Atom-2	Interatomic distance (Å)	Clash overlap (Å)
1:C:73:PRO:HG3	1:C:172:ASN:HD22	1.62	0.62
1:A:144:ASN:ND2	1:A:285:THR:O	2.33	0.62
1:B:263:PRO:HB3	1:B:272:THR:HG21	1.82	0.62
1:C:116:ALA:CA	1:C:296:THR:HG23	2.29	0.62
1:C:158:SER:HB2	1:C:161:ASP:OD2	2.00	0.62
1:C:70:ALA:HA	1:C:170:SER:HB3	1.79	0.62
1:A:204:VAL:HG12	1:A:206:THR:HG23	1.81	0.61
1:A:116:ALA:HA	1:A:296:THR:HG23	1.81	0.61
2:F:366:MET:O	2:F:370:VAL:HG23	2.00	0.61
1:A:214:VAL:CG1	1:A:215:HIS:H	2.14	0.61
1:A:122:ALA:HA	1:A:145:TYR:CE2	2.37	0.60
1:A:180:ASN:OD1	1:A:183:GLN:HG2	2.00	0.60
1:A:85:PRO:HB2	1:A:340:ASP:HB3	1.82	0.60
1:A:330:TYR:CD2	1:C:228:PRO:HD2	2.36	0.60
1:C:72:ALA:C	1:C:74:PRO:HD2	2.22	0.60
1:C:79:ASP:HA	1:C:96:LYS:HZ3	1.66	0.60
1:A:181:LEU:O	1:A:184:PHE:HD2	1.78	0.60
2:D:371:LYS:O	2:D:375:LYS:HG2	2.02	0.60
1:A:242:GLN:NE2	1:A:354:LEU:HD13	2.16	0.60
1:B:208:PRO:HD2	1:C:206:THR:HG22	1.84	0.60
1:B:238:GLY:CA	1:B:360:ALA:HB2	2.31	0.60
1:B:248:PRO:HG3	1:C:250:PHE:O	2.02	0.60
1:B:260:GLN:HG3	5:B:403:EPE:H61	1.82	0.60
1:C:252:PHE:CZ	1:C:322:ARG:HD3	2.37	0.60
1:A:241:SER:HB2	1:A:357:ALA:HB2	1.82	0.59
1:C:98:VAL:HG23	1:C:98:VAL:O	2.02	0.59
1:B:115:ILE:CD1	1:B:173:VAL:HG11	2.31	0.59
1:C:172:ASN:HB2	1:C:316:TRP:CE3	2.38	0.59
1:B:324:ASN:HB3	1:B:326:ASN:OD1	2.02	0.59
1:B:84:ILE:N	1:B:337:PRO:HG3	2.18	0.59
1:A:78:THR:O	1:A:80:PRO:HD3	2.02	0.58
1:C:115:ILE:HD12	1:C:173:VAL:HG11	1.85	0.58
1:C:73:PRO:N	1:C:74:PRO:HD2	2.18	0.58
1:A:86:ASP:HA	1:A:344:LEU:HD11	1.85	0.58
1:A:233:GLU:CG	1:A:237:LYS:HD2	2.33	0.58
1:C:172:ASN:HD22	1:C:316:TRP:HB2	1.67	0.58
1:A:247:GLU:HG3	1:A:248:PRO:HD2	1.85	0.58
1:B:116:ALA:HB2	1:B:296:THR:HG23	1.85	0.58
1:B:336:SER:HG	1:B:337:PRO:HD2	1.67	0.58
1:A:326:ASN:HD22	1:C:222:GLY:N	2.00	0.58
1:C:73:PRO:N	1:C:74:PRO:CD	2.67	0.57

*Continued on next page...*



*Continued from previous page...*

Atom-1	Atom-2	Interatomic distance (Å)	Clash overlap (Å)
1:C:98:VAL:HA	1:C:315:ALA:O	2.03	0.57
1:A:264:PRO:HG2	1:A:267:VAL:HG21	1.86	0.57
1:B:84:ILE:C	1:B:337:PRO:CG	2.70	0.57
1:C:346:GLU:HA	1:C:346:GLU:OE2	2.04	0.57
1:A:256:LEU:HD12	1:A:290:GLY:HA2	1.87	0.57
1:A:172:ASN:HB2	1:A:316:TRP:HB2	1.86	0.57
1:A:82:LYS:HG2	1:A:82:LYS:O	2.04	0.57
1:C:85:PRO:HB2	1:C:340:ASP:HB3	1.86	0.56
1:B:352:ARG:HD3	1:C:89:GLU:HB3	1.86	0.56
1:C:362:GLN:O	1:C:363:ASN:C	2.42	0.56
1:C:97:ASP:HB2	1:C:317:SER:HB2	1.87	0.56
1:A:196:LYS:HE2	1:A:246:ASN:OD1	2.06	0.56
1:A:228:PRO:HG2	1:B:331:GLN:NE2	2.17	0.56
1:A:324:ASN:HB3	1:A:326:ASN:ND2	2.21	0.56
1:B:346:GLU:OE2	1:B:346:GLU:HA	2.06	0.56
1:C:180:ASN:HD21	1:C:183:GLN:CG	2.18	0.55
1:C:263:PRO:HB3	1:C:272:THR:CG2	2.36	0.55
1:A:78:THR:CG2	1:A:79:ASP:N	2.70	0.55
1:B:68:LYS:HD3	1:B:76:PHE:CZ	2.41	0.55
1:B:84:ILE:HD13	1:B:250:PHE:CD2	2.42	0.54
1:C:77:ASN:N	1:C:77:ASN:HD22	2.05	0.54
1:B:170:SER:OG	1:B:318:CYS:SG	2.58	0.54
1:B:336:SER:OG	1:B:337:PRO:HD3	2.07	0.54
1:A:73:PRO:N	1:A:74:PRO:HD3	2.22	0.54
1:C:265:ALA:O	1:C:266:ASN:HB2	2.07	0.54
1:C:58:ARG:HH11	2:F:378:LEU:HD22	1.72	0.54
1:C:199:THR:CA	1:C:216:THR:HG22	2.38	0.54
1:A:242:GLN:HE22	1:A:354:LEU:HD13	1.73	0.53
1:C:183:GLN:HB3	1:C:308:VAL:HB	1.89	0.53
1:B:61:GLN:HA	1:B:61:GLN:NE2	2.23	0.53
1:C:188:ILE:HG13	1:C:235:PHE:HA	1.91	0.53
1:A:106:THR:HG21	1:A:109:GLN:HG3	1.90	0.53
1:C:178:THR:HG23	1:C:311:ALA:HA	1.90	0.53
1:A:313:LEU:C	1:A:313:LEU:HD23	2.29	0.53
1:B:115:ILE:CD1	1:B:173:VAL:CG1	2.85	0.53
1:C:199:THR:HA	1:C:216:THR:HG22	1.90	0.53
1:C:363:ASN:O	1:C:363:ASN:CG	2.47	0.53
1:A:177:PRO:HG2	1:A:236:ILE:O	2.08	0.53
1:A:263:PRO:CD	1:A:277:THR:HG23	2.38	0.53
1:B:115:ILE:CD1	1:B:173:VAL:HG21	2.31	0.53
1:C:352:ARG:HB3	1:C:352:ARG:NH1	2.24	0.53

*Continued on next page...*



*Continued from previous page...*

Atom-1	Atom-2	Interatomic distance (Å)	Clash overlap (Å)
1:A:326:ASN:ND2	1:C:222:GLY:HA2	2.14	0.53
1:C:183:GLN:CB	1:C:308:VAL:HB	2.38	0.53
1:C:115:ILE:CD1	1:C:173:VAL:HG21	2.39	0.52
3:R:8:U:H5'	3:R:9:U:H5	1.73	0.52
1:A:61:GLN:HA	1:A:61:GLN:NE2	2.24	0.52
1:C:55:ALA:HB3	2:F:375:LYS:HG2	1.91	0.52
1:C:180:ASN:OD1	1:C:183:GLN:HG2	2.10	0.52
1:A:264:PRO:HG2	1:A:267:VAL:CG2	2.39	0.52
1:A:228:PRO:CG	1:B:331:GLN:HE21	2.17	0.52
1:B:352:ARG:HH11	1:B:352:ARG:HG2	1.74	0.52
1:C:116:ALA:HB2	1:C:296:THR:CB	2.31	0.52
1:A:265:ALA:HB3	1:C:203:PRO:HB3	1.92	0.52
1:A:208:PRO:HD2	1:B:206:THR:HG22	1.90	0.52
1:B:247:GLU:HG3	1:B:248:PRO:HD2	1.91	0.52
1:B:116:ALA:HB2	1:B:296:THR:CG2	2.38	0.52
1:A:180:ASN:OD1	1:A:180:ASN:C	2.49	0.52
1:B:67:LEU:O	1:B:71:PHE:HD1	1.92	0.52
1:B:63:GLY:HA2	1:B:85:PRO:HG2	1.91	0.52
1:A:183:GLN:CG	1:A:308:VAL:HB	2.39	0.51
1:B:99:LEU:HD12	1:B:100:ASN:H	1.73	0.51
1:B:89:GLU:HA	1:B:336:SER:HB3	1.91	0.51
1:A:203:PRO:HD3	5:B:403:EPE:O1S	2.10	0.51
1:C:115:ILE:CD1	1:C:173:VAL:CG2	2.88	0.51
1:A:180:ASN:ND2	1:A:183:GLN:HE21	2.07	0.51
1:C:119:PRO:HB2	1:C:289:VAL:CG2	2.40	0.51
2:D:369:ARG:O	2:D:373:ILE:HG13	2.10	0.51
1:A:346:GLU:O	1:A:350:VAL:HG23	2.11	0.51
1:B:174:GLY:O	1:B:313:LEU:HD12	2.10	0.51
3:R:6:C:H2'	3:R:7:U:C6	2.46	0.51
1:A:163:VAL:HG23	1:A:255:ILE:HG13	1.92	0.51
1:B:78:THR:HG22	1:B:79:ASP:N	2.26	0.51
1:B:55:ALA:HA	2:E:378:LEU:HD13	1.92	0.51
1:A:106:THR:O	1:A:109:GLN:HB2	2.11	0.51
1:C:313:LEU:HD23	1:C:313:LEU:C	2.31	0.50
1:A:252:PHE:CZ	1:A:322:ARG:HD3	2.46	0.50
1:C:196:LYS:HE2	1:C:246:ASN:OD1	2.11	0.50
1:A:201:GLN:CD	1:B:264:PRO:HB3	2.32	0.50
1:B:55:ALA:N	1:B:58:ARG:HG3	2.25	0.50
1:B:87:ARG:CG	1:B:87:ARG:NH1	2.74	0.50
1:B:95:ARG:NH1	1:B:97:ASP:OD1	2.44	0.50
1:B:225:ALA:HB3	1:C:326:ASN:HA	1.92	0.50

*Continued on next page...*



*Continued from previous page...*

Atom-1	Atom-2	Interatomic distance (Å)	Clash overlap (Å)
1:C:79:ASP:HA	1:C:96:LYS:NZ	2.26	0.50
2:E:369:ARG:O	2:E:373:ILE:HG13	2.12	0.50
1:A:252:PHE:HB2	1:C:247:GLU:OE1	2.11	0.50
1:A:70:ALA:HA	1:A:170:SER:HB3	1.92	0.50
1:C:233:GLU:HG3	1:C:234:SER:N	2.27	0.50
1:A:103:ILE:CD1	1:A:105:PHE:CE1	2.94	0.50
1:B:61:GLN:HA	1:B:61:GLN:HE21	1.76	0.50
1:B:239:VAL:HG22	1:B:240:PHE:N	2.26	0.50
1:B:169:ALA:HB3	1:B:318:CYS:HB2	1.93	0.50
1:C:128:VAL:CG1	1:C:129:PRO:HD2	2.42	0.50
1:A:172:ASN:CB	1:A:316:TRP:HE3	2.25	0.49
1:A:160:SER:HB2	1:C:218:VAL:HB	1.94	0.49
1:C:68:LYS:HE2	2:F:367:TRP:CZ2	2.47	0.49
1:B:184:PHE:CD2	1:B:184:PHE:C	2.79	0.49
1:C:269:LEU:HD12	1:C:272:THR:HG1	1.77	0.49
1:C:360:ALA:O	1:C:363:ASN:OD1	2.30	0.49
3:R:7:U:C3'	3:R:8:U:H4'	2.43	0.49
1:A:123:TYR:CE1	1:A:143:VAL:HG21	2.47	0.49
1:A:180:ASN:HD21	1:A:183:GLN:HE21	1.59	0.49
1:A:70:ALA:HA	1:A:170:SER:CB	2.43	0.49
1:A:201:GLN:NE2	1:B:264:PRO:HB3	2.27	0.49
1:C:77:ASN:ND2	1:C:77:ASN:N	2.61	0.49
1:A:158:SER:HA	1:A:161:ASP:OD2	2.12	0.49
1:A:99:LEU:O	1:A:314:LYS:HA	2.13	0.49
1:C:176:TYR:O	1:C:311:ALA:CB	2.59	0.49
1:C:239:VAL:HG22	1:C:240:PHE:N	2.28	0.49
1:A:339:LEU:HD11	1:A:344:LEU:HD12	1.94	0.49
1:A:200:VAL:HA	1:B:257:GLU:O	2.13	0.48
1:C:349:THR:HA	1:C:352:ARG:HH12	1.78	0.48
1:A:352:ARG:HB3	1:A:352:ARG:NH1	2.27	0.48
1:A:176:TYR:HE1	1:A:363:ASN:HD22	1.62	0.48
1:A:94:SER:OG	1:A:334:HIS:HE1	1.95	0.48
1:B:115:ILE:O	1:B:296:THR:HG23	2.13	0.48
1:C:114:LEU:O	1:C:123:TYR:HB2	2.12	0.48
1:A:240:PHE:CE1	1:A:316:TRP:HZ3	2.29	0.48
1:A:242:GLN:NE2	1:A:354:LEU:CD1	2.76	0.48
1:C:140:PHE:HB2	1:C:278:MET:SD	2.53	0.48
1:C:241:SER:HB2	1:C:357:ALA:HB2	1.94	0.48
1:A:241:SER:HB2	1:A:357:ALA:CB	2.44	0.48
1:B:200:VAL:HG13	1:B:200:VAL:O	2.14	0.48
1:C:133:PHE:HB3	1:C:134:PRO:CD	2.43	0.48

*Continued on next page...*



*Continued from previous page...*

Atom-1	Atom-2	Interatomic distance (Å)	Clash overlap (Å)
1:A:248:PRO:HB3	1:B:86:ASP:OD2	2.14	0.48
1:A:115:ILE:O	1:A:296:THR:HG23	2.13	0.48
1:A:73:PRO:N	1:A:74:PRO:CD	2.76	0.48
1:C:128:VAL:HG12	1:C:129:PRO:HD2	1.95	0.47
1:C:85:PRO:HB2	1:C:340:ASP:CB	2.43	0.47
2:E:378:LEU:HD23	2:E:378:LEU:O	2.14	0.47
5:A:404:EPE:O1S	1:C:203:PRO:HD3	2.14	0.47
1:C:83:GLY:HA3	1:C:337:PRO:CD	2.44	0.47
1:A:61:GLN:N	1:A:62:PRO:HD2	2.28	0.47
1:B:339:LEU:CD1	1:B:344:LEU:HD11	2.44	0.47
1:A:138:THR:HG22	1:A:139:THR:N	2.30	0.47
1:A:201:GLN:NE2	1:B:259:ILE:HG23	2.30	0.47
1:B:115:ILE:CD1	1:B:173:VAL:CG2	2.86	0.47
1:A:180:ASN:OD1	1:A:183:GLN:N	2.35	0.47
1:B:172:ASN:ND2	1:B:242:GLN:HB2	2.30	0.47
1:C:261:THR:O	1:C:262:LEU:HD23	2.14	0.47
1:B:85:PRO:N	1:B:337:PRO:HG2	2.27	0.47
2:D:367:TRP:NE1	2:D:371:LYS:HD2	2.29	0.47
1:A:326:ASN:ND2	1:C:221:ASP:C	2.68	0.47
1:A:74:PRO:CG	1:A:316:TRP:CZ2	2.89	0.46
1:B:152:PHE:CG	1:B:289:VAL:HG11	2.50	0.46
1:B:262:LEU:HD23	1:B:264:PRO:HD3	1.97	0.46
1:A:326:ASN:ND2	1:C:222:GLY:N	2.64	0.46
1:B:188:ILE:HG13	1:B:235:PHE:HA	1.96	0.46
1:B:74:PRO:HG3	1:B:316:TRP:CZ2	2.50	0.46
1:A:99:LEU:HD22	1:A:122:ALA:CB	2.45	0.46
1:C:156:SER:O	1:C:258:GLY:N	2.39	0.46
1:A:239:VAL:HG22	1:A:240:PHE:N	2.30	0.46
1:C:119:PRO:HB2	1:C:289:VAL:HG23	1.97	0.46
3:R:7:U:N3	3:R:8:U:O2	2.49	0.46
1:A:134:PRO:O	1:A:224:LEU:HD22	2.16	0.46
1:B:123:TYR:CZ	1:B:143:VAL:HG21	2.50	0.46
1:C:55:ALA:HB1	2:F:378:LEU:HD12	1.97	0.46
1:A:102:SER:C	1:A:103:ILE:HG23	2.35	0.46
1:A:119:PRO:HB2	1:A:289:VAL:CG2	2.46	0.46
1:B:220:LEU:HD12	1:B:220:LEU:HA	1.75	0.46
1:B:262:LEU:HA	1:B:263:PRO:C	2.35	0.46
1:C:220:LEU:HB2	1:C:275:PRO:HD2	1.98	0.46
1:B:220:LEU:HB3	1:B:275:PRO:HD2	1.97	0.46
1:B:185:ALA:HB3	1:B:307:ALA:CB	2.45	0.46
1:A:126:ALA:HB3	1:A:140:PHE:CE2	2.51	0.46

*Continued on next page...*



*Continued from previous page...*

Atom-1	Atom-2	Interatomic distance (Å)	Clash overlap (Å)
1:B:172:ASN:ND2	1:B:172:ASN:N	2.63	0.46
1:B:158:SER:HA	1:B:161:ASP:OD1	2.16	0.45
1:B:99:LEU:HD12	1:B:100:ASN:N	2.31	0.45
1:A:72:ALA:HB2	2:D:366:MET:HG3	1.97	0.45
1:A:262:LEU:HA	1:A:263:PRO:C	2.36	0.45
1:A:337:PRO:HA	1:A:338:PRO:HD3	1.83	0.45
1:C:324:ASN:HB3	1:C:326:ASN:OD1	2.16	0.45
1:C:55:ALA:O	1:C:58:ARG:HG3	2.17	0.45
1:C:125:SER:C	1:C:140:PHE:HD2	2.20	0.45
1:C:177:PRO:HG2	1:C:236:ILE:O	2.16	0.45
1:C:115:ILE:O	1:C:296:THR:HG23	2.16	0.45
1:A:246:ASN:HB3	1:A:295:ASP:OD1	2.16	0.45
1:B:264:PRO:HG2	1:B:267:VAL:CG2	2.46	0.45
1:A:233:GLU:HG3	1:A:234:SER:N	2.31	0.45
1:B:124:TRP:CZ3	1:B:142:PRO:HD3	2.52	0.45
1:C:69:CYS:SG	1:C:80:PRO:HB2	2.57	0.45
1:B:154:THR:O	1:B:284:ALA:HA	2.16	0.45
1:C:70:ALA:HA	1:C:170:SER:CB	2.43	0.45
1:B:84:ILE:O	1:B:337:PRO:CG	2.63	0.45
1:C:242:GLN:OE1	1:C:242:GLN:N	2.49	0.45
1:C:328:MET:C	1:C:328:MET:SD	2.95	0.45
1:A:180:ASN:OD1	1:A:180:ASN:O	2.35	0.44
1:B:184:PHE:CG	1:B:184:PHE:O	2.68	0.44
1:C:268:SER:O	1:C:271:SER:HB3	2.17	0.44
1:A:304:PRO:HG2	1:A:307:ALA:HB2	1.99	0.44
1:B:55:ALA:N	1:B:58:ARG:CD	2.81	0.44
1:A:94:SER:OG	1:A:334:HIS:CE1	2.70	0.44
1:C:89:GLU:CD	1:C:338:PRO:HB3	2.37	0.44
1:A:23:ALA:HA	1:A:24:PRO:HD3	1.89	0.44
1:B:122:ALA:HA	1:B:145:TYR:CE1	2.52	0.44
1:C:79:ASP:N	1:C:80:PRO:HD3	2.32	0.44
1:A:200:VAL:O	1:A:213:LEU:HD12	2.16	0.44
1:A:96:LYS:HD2	1:A:318:CYS:SG	2.56	0.44
1:A:57:THR:CG2	1:A:58:ARG:H	2.30	0.44
1:B:182:MET:HG2	1:B:182:MET:O	2.18	0.44
1:C:55:ALA:HB1	2:F:378:LEU:CD1	2.48	0.44
1:B:116:ALA:HB1	1:B:117:PRO:HD2	2.00	0.44
1:B:204:VAL:CG1	1:B:206:THR:HG23	2.48	0.44
1:C:203:PRO:HA	1:C:211:SER:HA	2.00	0.43
1:A:168:TYR:CZ	1:A:319:ILE:CD1	3.00	0.43
1:A:250:PHE:CD1	1:A:250:PHE:N	2.86	0.43

*Continued on next page...*



*Continued from previous page...*

Atom-1	Atom-2	Interatomic distance (Å)	Clash overlap (Å)
1:A:264:PRO:HB3	1:C:201:GLN:CD	2.39	0.43
1:B:223:VAL:HG12	1:B:223:VAL:O	2.18	0.43
1:C:115:ILE:HD12	1:C:173:VAL:CG1	2.47	0.43
1:C:302:SER:O	1:C:304:PRO:HD3	2.17	0.43
1:C:116:ALA:CB	1:C:296:THR:HG21	2.30	0.43
1:C:74:PRO:HB3	1:C:316:TRP:CZ2	2.54	0.43
1:B:144:ASN:HD22	1:B:144:ASN:N	2.17	0.43
1:B:55:ALA:N	1:B:58:ARG:HD3	2.34	0.43
1:B:61:GLN:CA	1:B:61:GLN:NE2	2.82	0.43
1:B:84:ILE:N	1:B:337:PRO:CG	2.81	0.43
1:C:319:ILE:HB	1:C:321:TYR:CE1	2.53	0.43
1:A:102:SER:C	1:A:103:ILE:CG2	2.88	0.43
1:A:124:TRP:CD1	1:A:124:TRP:N	2.86	0.43
1:A:180:ASN:ND2	1:A:183:GLN:HB3	2.31	0.43
1:A:57:THR:CG2	1:A:58:ARG:N	2.81	0.43
1:B:162:GLN:O	1:B:324:ASN:HB2	2.19	0.43
1:B:242:GLN:NE2	1:B:354:LEU:HD13	2.33	0.43
1:C:89:GLU:OE1	1:C:338:PRO:HB3	2.18	0.43
1:C:176:TYR:HA	1:C:177:PRO:HD2	1.81	0.42
1:B:156:SER:O	1:B:258:GLY:N	2.48	0.42
1:A:142:PRO:HD3	1:A:279:ASP:O	2.19	0.42
1:B:124:TRP:N	1:B:124:TRP:CD1	2.87	0.42
1:A:257:GLU:O	1:C:200:VAL:HA	2.20	0.42
1:B:185:ALA:HB3	1:B:307:ALA:HB1	2.00	0.42
1:C:133:PHE:HB3	1:C:134:PRO:HD2	2.02	0.42
1:A:176:TYR:O	1:A:311:ALA:CA	2.67	0.42
1:A:199:THR:CA	1:A:216:THR:HG22	2.50	0.42
2:D:367:TRP:CD1	2:D:371:LYS:HD2	2.54	0.42
3:R:8:U:H5'	3:R:9:U:C5	2.53	0.42
1:A:233:GLU:HG2	1:A:237:LYS:HD2	2.02	0.42
1:B:73:PRO:N	1:B:74:PRO:HD3	2.34	0.42
1:B:350:VAL:HG11	2:E:370:VAL:HG13	2.02	0.42
1:B:59:LEU:HD23	1:B:342:VAL:HB	2.02	0.42
1:B:88:PHE:CZ	1:B:90:GLY:HA3	2.54	0.42
1:C:240:PHE:HE1	1:C:316:TRP:CZ3	2.37	0.42
1:C:78:THR:C	1:C:80:PRO:HD3	2.40	0.42
1:A:113:ILE:O	1:A:114:LEU:HD23	2.20	0.42
1:A:172:ASN:OD1	1:A:242:GLN:HB2	2.20	0.42
1:A:213:LEU:CD2	1:B:214:VAL:HA	2.50	0.42
1:B:238:GLY:O	1:B:239:VAL:HB	2.20	0.42
1:C:105:PHE:N	1:C:105:PHE:CD1	2.88	0.42

*Continued on next page...*



*Continued from previous page...*

Atom-1	Atom-2	Interatomic distance (Å)	Clash overlap (Å)
1:A:193:CYS:SG	1:B:325:PRO:HG2	2.60	0.41
1:B:337:PRO:HA	1:B:338:PRO:HD2	1.83	0.41
1:B:72:ALA:N	1:B:73:PRO:HD3	2.34	0.41
1:B:222:GLY:HA2	1:C:326:ASN:OD1	2.21	0.41
1:A:21:GLN:O	1:A:21:GLN:HG2	2.20	0.41
1:C:250:PHE:CD1	1:C:250:PHE:N	2.87	0.41
1:B:113:ILE:HG23	1:B:123:TYR:CD1	2.55	0.41
1:B:339:LEU:HD11	1:B:344:LEU:HD12	2.03	0.41
1:B:262:LEU:HD23	1:B:262:LEU:HA	1.81	0.41
1:B:283:GLU:HG2	5:B:403:EPE:C8	2.50	0.41
1:C:277:THR:HG22	1:C:278:MET:N	2.35	0.41
1:A:103:ILE:HD11	1:A:105:PHE:CE1	2.52	0.41
1:A:172:ASN:CB	1:A:316:TRP:CE3	3.00	0.41
2:D:374:ILE:O	2:D:378:LEU:HB2	2.20	0.41
1:A:103:ILE:HG13	1:A:103:ILE:O	2.21	0.41
5:B:403:EPE:H102	5:B:403:EPE:H62	1.87	0.41
1:B:139:THR:HA	1:B:277:THR:O	2.20	0.41
1:B:202:PHE:CD1	1:B:202:PHE:C	2.94	0.41
1:B:156:SER:HB2	1:B:258:GLY:HA2	2.02	0.41
1:B:140:PHE:HB2	1:B:278:MET:SD	2.61	0.41
1:C:263:PRO:HA	1:C:264:PRO:HD3	1.85	0.41
1:A:102:SER:O	1:A:103:ILE:CG2	2.68	0.41
1:A:266:ASN:HD22	1:A:266:ASN:N	2.18	0.41
1:A:97:ASP:N	1:A:317:SER:O	2.46	0.41
1:A:319:ILE:HG22	1:A:320:GLU:N	2.36	0.41
1:B:298:VAL:C	1:B:299:ILE:HG13	2.40	0.41
1:C:190:VAL:O	1:C:230:ASN:HB2	2.21	0.41
1:A:349:THR:HA	1:A:352:ARG:HH12	1.86	0.40
1:B:73:PRO:N	1:B:74:PRO:CD	2.84	0.40
1:A:334:HIS:CD2	1:A:334:HIS:C	2.92	0.40
1:A:172:ASN:OD1	1:A:242:GLN:CB	2.69	0.40
1:C:241:SER:HB2	1:C:357:ALA:CB	2.51	0.40
1:A:78:THR:CG2	1:A:79:ASP:H	2.35	0.40
1:A:116:ALA:CA	1:A:296:THR:HG23	2.47	0.40
1:B:207:ASP:HA	1:B:208:PRO:HA	1.94	0.40
1:B:239:VAL:CG2	1:B:240:PHE:N	2.85	0.40
1:C:163:VAL:HG23	1:C:255:ILE:HG13	2.03	0.40
1:C:233:GLU:CG	1:C:234:SER:N	2.84	0.40

There are no symmetry-related clashes.



## 5.3 Torsion angles

### 5.3.1 Protein backbone

In the following table, the Percentiles column shows the percent Ramachandran outliers of the chain as a percentile score with respect to all X-ray entries followed by that with respect to entries of similar resolution.

The Analysed column shows the number of residues for which the backbone conformation was analysed, and the total number of residues.

Mol	Chain	Analysed	Favoured	Allowed	Outliers	Percentiles	
1	A	311/363 (86%)	287 (92%)	24 (8%)	0	100	100
1	B	307/363 (85%)	283 (92%)	23 (8%)	1 (0%)	41	75
1	C	307/363 (85%)	283 (92%)	24 (8%)	0	100	100
2	D	16/44 (36%)	15 (94%)	1 (6%)	0	100	100
2	E	15/44 (34%)	15 (100%)	0	0	100	100
2	F	17/44 (39%)	16 (94%)	1 (6%)	0	100	100
All	All	973/1221 (80%)	899 (92%)	73 (8%)	1 (0%)	51	84

All (1) Ramachandran outliers are listed below:

Mol	Chain	Res	Type
1	B	239	VAL

### 5.3.2 Protein sidechains

In the following table, the Percentiles column shows the percent sidechain outliers of the chain as a percentile score with respect to all X-ray entries followed by that with respect to entries of similar resolution.

The Analysed column shows the number of residues for which the sidechain conformation was analysed, and the total number of residues.

Mol	Chain	Analysed	Rotameric	Outliers	Percentiles	
1	A	262/305 (86%)	262 (100%)	0	100	100
1	B	256/305 (84%)	256 (100%)	0	100	100
1	C	256/305 (84%)	253 (99%)	3 (1%)	71	87
2	D	14/31 (45%)	14 (100%)	0	100	100
2	E	14/31 (45%)	14 (100%)	0	100	100
2	F	15/31 (48%)	15 (100%)	0	100	100

*Continued on next page...*



*Continued from previous page...*

Mol	Chain	Analysed	Rotameric	Outliers	Percentiles	
All	All	817/1008 (81%)	814 (100%)	3 (0%)	91	96

All (3) residues with a non-rotameric sidechain are listed below:

Mol	Chain	Res	Type
1	C	69	CYS
1	C	144	ASN
1	C	184	PHE

Some sidechains can be flipped to improve hydrogen bonding and reduce clashes. All (24) such sidechains are listed below:

Mol	Chain	Res	Type
1	A	21	GLN
1	A	61	GLN
1	A	183	GLN
1	A	201	GLN
1	A	266	ASN
1	A	324	ASN
1	A	326	ASN
1	A	334	HIS
1	A	363	ASN
1	B	61	GLN
1	B	100	ASN
1	B	144	ASN
1	B	215	HIS
1	B	253	ASN
1	B	331	GLN
1	B	362	GLN
1	C	77	ASN
1	C	144	ASN
1	C	246	ASN
1	C	266	ASN
1	C	274	GLN
1	C	345	GLN
1	C	362	GLN
1	C	363	ASN

### 5.3.3 RNA



Mol	Chain	Analysed	Backbone Outliers	Pucker Outliers
3	R	13/14 (92%)	4 (30%)	0

All (4) RNA backbone outliers are listed below:

Mol	Chain	Res	Type
3	R	4	C
3	R	5	U
3	R	8	U
3	R	12	U

There are no RNA pucker outliers to report.

## 5.4 Non-standard residues in protein, DNA, RNA chains ⓘ

There are no non-standard protein/DNA/RNA residues in this entry.

## 5.5 Carbohydrates ⓘ

There are no carbohydrates in this entry.

## 5.6 Ligand geometry ⓘ

Of 8 ligands modelled in this entry, 5 are monoatomic - leaving 3 for Mogul analysis.

In the following table, the Counts columns list the number of bonds (or angles) for which Mogul statistics could be retrieved, the number of bonds (or angles) that are observed in the model and the number of bonds (or angles) that are defined in the Chemical Component Dictionary. The Link column lists molecule types, if any, to which the group is linked. The Z score for a bond length (or angle) is the number of standard deviations the observed value is removed from the expected value. A bond length (or angle) with  $|Z| > 2$  is considered an outlier worth inspection. RMSZ is the root-mean-square of all Z scores of the bond lengths (or angles).

Mol	Type	Chain	Res	Link	Bond lengths			Bond angles		
					Counts	RMSZ	# $ Z  > 2$	Counts	RMSZ	# $ Z  > 2$
5	EPE	C	401	-	15,15,15	1.74	1 (6%)	18,20,20	1.70	3 (16%)
5	EPE	A	404	-	15,15,15	1.49	1 (6%)	18,20,20	1.51	3 (16%)
5	EPE	B	403	-	15,15,15	1.31	1 (6%)	18,20,20	1.73	3 (16%)

In the following table, the Chirals column lists the number of chiral outliers, the number of chiral centers analysed, the number of these observed in the model and the number defined in the Chemical Component Dictionary. Similar counts are reported in the Torsion and Rings columns.



'-' means no outliers of that kind were identified.

Mol	Type	Chain	Res	Link	Chirals	Torsions	Rings
5	EPE	C	401	-	-	1/9/19/19	0/1/1/1
5	EPE	A	404	-	-	0/9/19/19	0/1/1/1
5	EPE	B	403	-	-	1/9/19/19	0/1/1/1

All (3) bond length outliers are listed below:

Mol	Chain	Res	Type	Atoms	Z	Observed(Å)	Ideal(Å)
5	C	401	EPE	C10-S	4.53	1.84	1.77
5	A	404	EPE	C10-S	3.24	1.82	1.77
5	B	403	EPE	C10-S	2.69	1.81	1.77

All (9) bond angle outliers are listed below:

Mol	Chain	Res	Type	Atoms	Z	Observed(°)	Ideal(°)
5	B	403	EPE	O1S-S-C10	5.81	113.91	106.92
5	C	401	EPE	O1S-S-C10	5.69	113.76	106.92
5	A	404	EPE	O1S-S-C10	4.78	112.67	106.92
5	A	404	EPE	O3S-S-O2S	-2.63	104.85	111.27
5	C	401	EPE	O3S-S-O2S	-2.63	104.85	111.27
5	C	401	EPE	O3S-S-O1S	-2.59	104.96	111.27
5	B	403	EPE	O3S-S-O1S	-2.57	105.00	111.27
5	A	404	EPE	O3S-S-O1S	-2.29	105.68	111.27
5	B	403	EPE	O3S-S-O2S	-2.20	105.90	111.27

There are no chirality outliers.

All (2) torsion outliers are listed below:

Mol	Chain	Res	Type	Atoms
5	B	403	EPE	N4-C7-C8-O8
5	C	401	EPE	N4-C7-C8-O8

There are no ring outliers.

2 monomers are involved in 5 short contacts:

Mol	Chain	Res	Type	Clashes	Symm-Clashes
5	A	404	EPE	1	0
5	B	403	EPE	4	0



## 5.7 Other polymers

There are no such residues in this entry.

## 5.8 Polymer linkage issues

There are no chain breaks in this entry.



## 6 Fit of model and data

### 6.1 Protein, DNA and RNA chains

In the following table, the column labelled ‘#RSRZ> 2’ contains the number (and percentage) of RSRZ outliers, followed by percent RSRZ outliers for the chain as percentile scores relative to all X-ray entries and entries of similar resolution. The OWAB column contains the minimum, median, 95<sup>th</sup> percentile and maximum values of the occupancy-weighted average B-factor per residue. The column labelled ‘Q< 0.9’ lists the number of (and percentage) of residues with an average occupancy less than 0.9.

Mol	Chain	Analysed	<RSRZ>	#RSRZ>2	OWAB(Å <sup>2</sup> )	Q<0.9
1	A	315/363 (86%)	-0.11	8 (2%) 57 51	69, 95, 182, 266	0
1	B	309/363 (85%)	-0.27	4 (1%) 77 71	67, 97, 147, 221	0
1	C	309/363 (85%)	-0.13	8 (2%) 56 49	63, 94, 163, 246	0
2	D	18/44 (40%)	1.82	9 (50%) 0 0	187, 224, 249, 252	0
2	E	17/44 (38%)	3.29	14 (82%) 0 0	189, 233, 262, 271	0
2	F	19/44 (43%)	2.02	8 (42%) 0 0	187, 216, 246, 251	0
3	R	14/14 (100%)	4.76	14 (100%) 0 0	302, 397, 437, 459	0
All	All	1001/1235 (81%)	0.03	65 (6%) 18 17	63, 97, 223, 459	0

All (65) RSRZ outliers are listed below:

Mol	Chain	Res	Type	RSRZ
1	A	22	THR	7.5
3	R	3	U	6.9
3	R	4	C	6.9
3	R	5	U	6.4
3	R	6	C	5.8
3	R	7	U	5.5
2	E	364	ALA	5.4
2	F	364	ALA	5.4
1	B	363	ASN	4.9
3	R	2	U	4.8
1	A	23	ALA	4.7
1	A	21	GLN	4.7
2	E	380	ALA	4.7
1	A	26	PRO	4.6
2	E	377	SER	4.6
3	R	14	U	4.5
3	R	8	U	4.4

*Continued on next page...*



*Continued from previous page...*

Mol	Chain	Res	Type	RSRZ
1	A	24	PRO	4.4
3	R	15	U	4.3
2	E	379	ALA	4.3
2	D	364	ALA	4.1
1	C	362	GLN	4.1
3	R	9	U	4.0
2	E	373	ILE	4.0
2	E	378	LEU	3.9
3	R	13	C	3.8
1	C	363	ASN	3.8
2	E	374	ILE	3.7
3	R	11	A	3.7
1	C	55	ALA	3.7
1	A	27	GLN	3.7
2	E	375	LYS	3.6
2	D	381	ALA	3.6
1	C	56	LEU	3.5
2	E	376	SER	3.5
2	D	377	SER	3.4
2	F	374	ILE	3.3
2	F	367	TRP	3.2
3	R	12	U	3.0
1	B	362	GLN	2.9
1	A	25	VAL	2.9
2	E	372	SER	2.9
1	C	80	PRO	2.8
2	E	369	ARG	2.8
2	F	371	LYS	2.7
2	F	372	SER	2.7
2	D	367	TRP	2.6
3	R	10	U	2.6
1	B	55	ALA	2.6
1	C	77	ASN	2.6
2	D	365	SER	2.5
2	E	366	MET	2.5
1	C	75	ASP	2.5
2	F	375	LYS	2.4
2	E	370	VAL	2.3
2	D	380	ALA	2.3
1	B	77	ASN	2.3
1	C	57	THR	2.3
2	E	365	SER	2.3

*Continued on next page...*



*Continued from previous page...*

Mol	Chain	Res	Type	RSRZ
1	A	363	ASN	2.2
2	D	379	ALA	2.2
2	D	378	LEU	2.2
2	F	378	LEU	2.1
2	F	370	VAL	2.1
2	D	374	ILE	2.0

## 6.2 Non-standard residues in protein, DNA, RNA chains [i](#)

There are no non-standard protein/DNA/RNA residues in this entry.

## 6.3 Carbohydrates [i](#)

There are no carbohydrates in this entry.

## 6.4 Ligands [i](#)

In the following table, the Atoms column lists the number of modelled atoms in the group and the number defined in the chemical component dictionary. The B-factors column lists the minimum, median, 95<sup>th</sup> percentile and maximum values of B factors of atoms in the group. The column labelled 'Q< 0.9' lists the number of atoms with occupancy less than 0.9.

Mol	Type	Chain	Res	Atoms	RSCC	RSR	B-factors( $\text{\AA}^2$ )	Q<0.9
5	EPE	C	401	15/15	0.83	0.29	60,111,175,177	0
6	CL	B	402	1/1	0.86	0.16	106,106,106,106	0
5	EPE	B	403	15/15	0.87	0.35	64,102,158,178	0
4	CA	A	403	1/1	0.89	0.27	105,105,105,105	0
4	CA	A	402	1/1	0.90	0.12	72,72,72,72	0
4	CA	B	401	1/1	0.92	0.16	71,71,71,71	0
5	EPE	A	404	15/15	0.94	0.21	60,107,179,182	0
4	CA	A	401	1/1	0.94	0.09	69,69,69,69	0

## 6.5 Other polymers [i](#)

There are no such residues in this entry.