



Full wwPDB X-ray Structure Validation Report ⓘ

Nov 2, 2021 – 02:58 PM EDT

PDB ID : 3FWN
Title : Dimeric 6-phosphogluconate dehydrogenase complexed with 6-phosphogluconate and 2'-monophosphoadenosine-5'-diphosphate
Authors : Chen, Y.-Y.; Ko, T.-P.; Lo, L.-P.; Lin, C.-H.; Wang, A.H.-J.
Deposited on : 2009-01-19
Resolution : 1.50 Å(reported)

This is a Full wwPDB X-ray Structure Validation Report for a publicly released PDB entry.

We welcome your comments at validation@mail.wwpdb.org

A user guide is available at

<https://www.wwpdb.org/validation/2017/XrayValidationReportHelp>

with specific help available everywhere you see the ⓘ symbol.

The following versions of software and data (see [references ⓘ](#)) were used in the production of this report:

MolProbity : 4.02b-467
Mogul : 1.8.5 (274361), CSD as541be (2020)
Xtriage (Phenix) : 1.13
EDS : 2.23.2
buster-report : 1.1.7 (2018)
Percentile statistics : 20191225.v01 (using entries in the PDB archive December 25th 2019)
Refmac : 5.8.0158
CCP4 : 7.0.044 (Gargrove)
Ideal geometry (proteins) : Engh & Huber (2001)
Ideal geometry (DNA, RNA) : Parkinson et al. (1996)
Validation Pipeline (wwPDB-VP) : 2.23.2

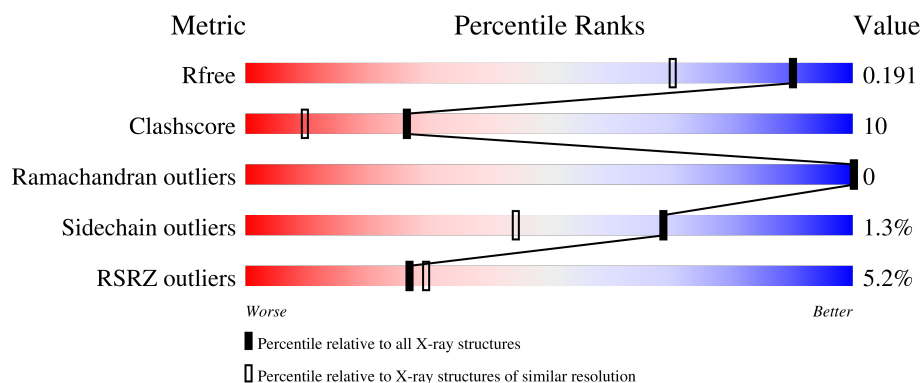
1 Overall quality at a glance

The following experimental techniques were used to determine the structure:

X-RAY DIFFRACTION

The reported resolution of this entry is 1.50 Å.

Percentile scores (ranging between 0-100) for global validation metrics of the entry are shown in the following graphic. The table shows the number of entries on which the scores are based.



Metric	Whole archive (#Entries)	Similar resolution (#Entries, resolution range(Å))
R_{free}	130704	2936 (1.50-1.50)
Clashscore	141614	3144 (1.50-1.50)
Ramachandran outliers	138981	3066 (1.50-1.50)
Sidechain outliers	138945	3064 (1.50-1.50)
RSRZ outliers	127900	2884 (1.50-1.50)

The table below summarises the geometric issues observed across the polymeric chains and their fit to the electron density. The red, orange, yellow and green segments of the lower bar indicate the fraction of residues that contain outliers for ≥ 3 , 2, 1 and 0 types of geometric quality criteria respectively. A grey segment represents the fraction of residues that are not modelled. The numeric value for each fraction is indicated below the corresponding segment, with a dot representing fractions $\leq 5\%$. The upper red bar (where present) indicates the fraction of residues that have poor fit to the electron density. The numeric value is given above the bar.

Mol	Chain	Length	Quality of chain
1	A	480	<div> <div>8%</div> <div> <div></div> <div>80%</div> <div>17%</div> <div>.</div> </div> </div>
1	B	480	<div> <div>2%</div> <div> <div></div> <div>84%</div> <div>12%</div> <div>..</div> </div> </div>

2 Entry composition

There are 4 unique types of molecules in this entry. The entry contains 8994 atoms, of which 0 are hydrogens and 0 are deuteriums.

In the tables below, the ZeroOcc column contains the number of atoms modelled with zero occupancy, the AltConf column contains the number of residues with at least one atom in alternate conformation and the Trace column contains the number of residues modelled with at most 2 atoms.

- Molecule 1 is a protein called 6-phosphogluconate dehydrogenase, decarboxylating.

Mol	Chain	Residues	Atoms					ZeroOcc	AltConf	Trace
1	A	467	Total	C	N	O	S	0	0	0
			3624	2308	607	701	8			
1	B	467	Total	C	N	O	S	0	0	0
			3624	2308	607	701	8			

There are 26 discrepancies between the modelled and reference sequences:

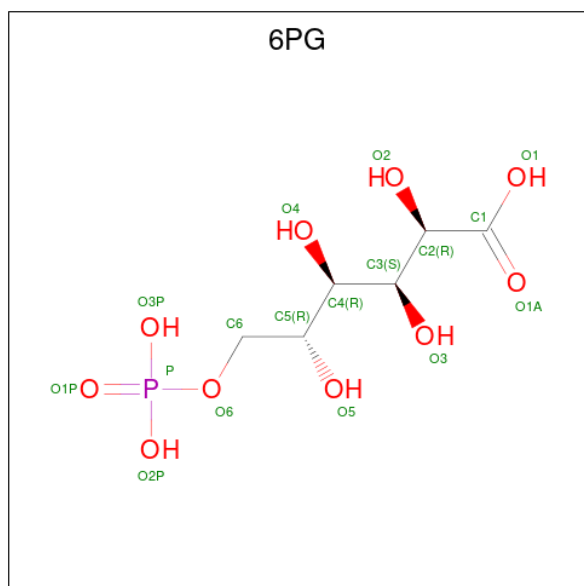
Chain	Residue	Modelled	Actual	Comment	Reference
A	-11	MET	-	expression tag	UNP P00350
A	-10	GLY	-	expression tag	UNP P00350
A	-9	HIS	-	expression tag	UNP P00350
A	-8	HIS	-	expression tag	UNP P00350
A	-7	HIS	-	expression tag	UNP P00350
A	-6	HIS	-	expression tag	UNP P00350
A	-5	HIS	-	expression tag	UNP P00350
A	-4	HIS	-	expression tag	UNP P00350
A	-3	HIS	-	expression tag	UNP P00350
A	-2	HIS	-	expression tag	UNP P00350
A	-1	HIS	-	expression tag	UNP P00350
A	0	HIS	-	expression tag	UNP P00350
A	414	ILE	ASN	engineered mutation	UNP P00350
B	-11	MET	-	expression tag	UNP P00350
B	-10	GLY	-	expression tag	UNP P00350
B	-9	HIS	-	expression tag	UNP P00350
B	-8	HIS	-	expression tag	UNP P00350
B	-7	HIS	-	expression tag	UNP P00350
B	-6	HIS	-	expression tag	UNP P00350
B	-5	HIS	-	expression tag	UNP P00350
B	-4	HIS	-	expression tag	UNP P00350
B	-3	HIS	-	expression tag	UNP P00350
B	-2	HIS	-	expression tag	UNP P00350
B	-1	HIS	-	expression tag	UNP P00350
B	0	HIS	-	expression tag	UNP P00350

Continued on next page...

Continued from previous page...

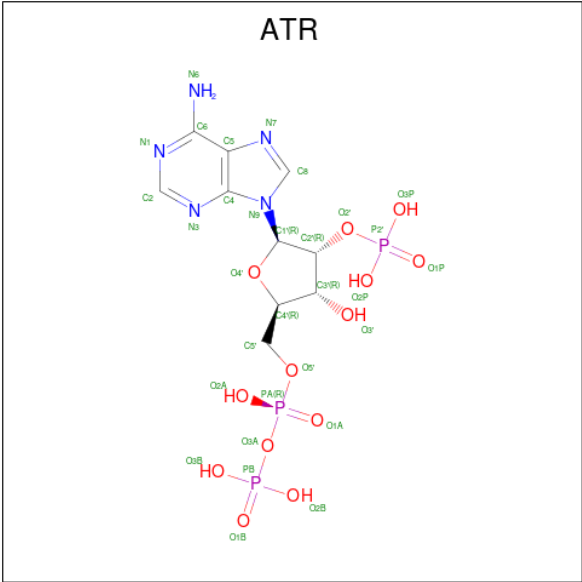
Chain	Residue	Modelled	Actual	Comment	Reference
B	414	ILE	ASN	engineered mutation	UNP P00350

- Molecule 2 is 6-PHOSPHOGLUCONIC ACID (three-letter code: 6PG) (formula: $C_6H_{13}O_{10}P$).



Mol	Chain	Residues	Atoms				ZeroOcc	AltConf
2	A	1	Total	C	O	P	0	0
			17	6	10	1		
2	B	1	Total	C	O	P	0	0
			17	6	10	1		

- Molecule 3 is 2'-MONOPHOSPHOADENOSINE-5'-DIPHOSPHATE (three-letter code: ATR) (formula: $C_{10}H_{16}N_5O_{13}P_3$).



Mol	Chain	Residues	Atoms					ZeroOcc	AltConf
3	B	1	Total	C	N	O	P	0	0
			31	10	5	13	3		

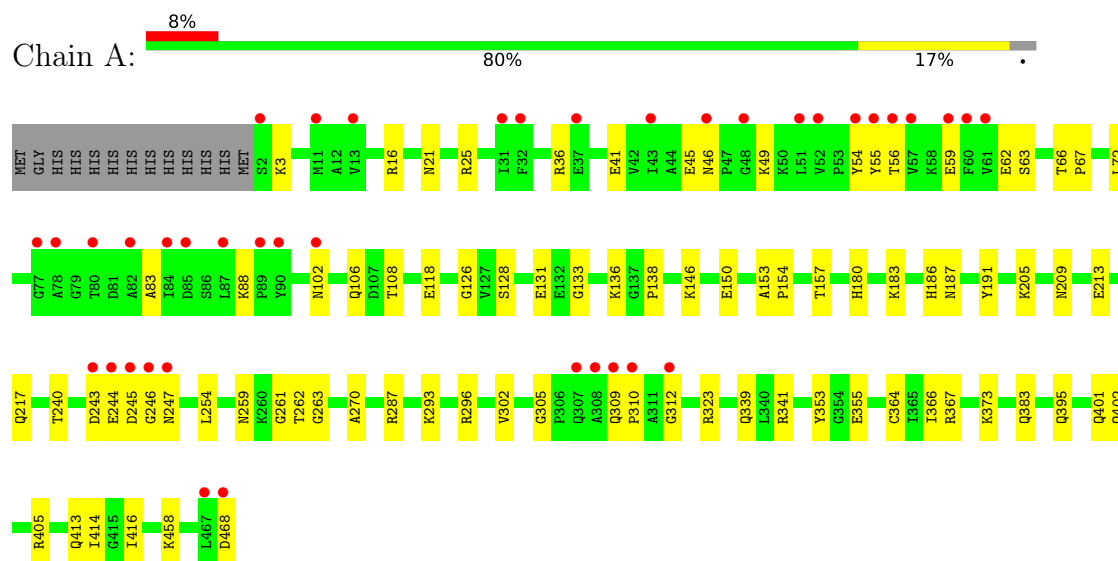
- Molecule 4 is water.

Mol	Chain	Residues	Atoms		ZeroOcc	AltConf
4	A	759	Total	O	0	0
			759	759		
4	B	922	Total	O	0	0
			922	922		

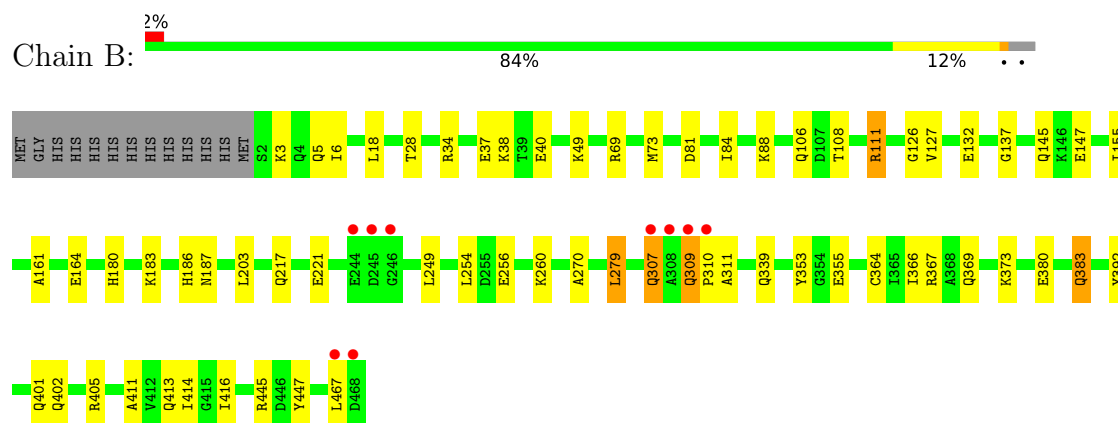
3 Residue-property plots [i](#)

These plots are drawn for all protein, RNA, DNA and oligosaccharide chains in the entry. The first graphic for a chain summarises the proportions of the various outlier classes displayed in the second graphic. The second graphic shows the sequence view annotated by issues in geometry and electron density. Residues are color-coded according to the number of geometric quality criteria for which they contain at least one outlier: green = 0, yellow = 1, orange = 2 and red = 3 or more. A red dot above a residue indicates a poor fit to the electron density ($RSRZ > 2$). Stretches of 2 or more consecutive residues without any outlier are shown as a green connector. Residues present in the sample, but not in the model, are shown in grey.

- Molecule 1: 6-phosphogluconate dehydrogenase, decarboxylating



- Molecule 1: 6-phosphogluconate dehydrogenase, decarboxylating



4 Data and refinement statistics

Property	Value	Source
Space group	P 21 21 21	Depositor
Cell constants a, b, c, α , β , γ	68.33Å 117.95Å 119.62Å 90.00° 90.00° 90.00°	Depositor
Resolution (Å)	50.00 – 1.50 45.00 – 1.50	Depositor EDS
% Data completeness (in resolution range)	92.8 (50.00-1.50) 92.8 (45.00-1.50)	Depositor EDS
R_{merge}	0.07	Depositor
R_{sym}	(Not available)	Depositor
$\langle I/\sigma(I) \rangle$ ¹	2.66 (at 1.50Å)	Xtriage
Refinement program	CNS	Depositor
R, R_{free}	0.161 , 0.193 0.160 , 0.191	Depositor DCC
R_{free} test set	7260 reflections (5.05%)	wwPDB-VP
Wilson B-factor (Å ²)	11.9	Xtriage
Anisotropy	0.117	Xtriage
Bulk solvent k_{sol} (e/Å ³), B_{sol} (Å ²)	0.32 , 44.1	EDS
L-test for twinning ²	$\langle L \rangle = 0.49$, $\langle L^2 \rangle = 0.32$	Xtriage
Estimated twinning fraction	0.013 for -h,l,k	Xtriage
F_o, F_c correlation	0.97	EDS
Total number of atoms	8994	wwPDB-VP
Average B, all atoms (Å ²)	21.0	wwPDB-VP

Xtriage's analysis on translational NCS is as follows: *The largest off-origin peak in the Patterson function is 4.50% of the height of the origin peak. No significant pseudotranslation is detected.*

¹Intensities estimated from amplitudes.

²Theoretical values of $\langle |L| \rangle$, $\langle L^2 \rangle$ for acentric reflections are 0.5, 0.333 respectively for untwinned datasets, and 0.375, 0.2 for perfectly twinned datasets.

5 Model quality

5.1 Standard geometry

Bond lengths and bond angles in the following residue types are not validated in this section: ATR, 6PG

The Z score for a bond length (or angle) is the number of standard deviations the observed value is removed from the expected value. A bond length (or angle) with $|Z| > 5$ is considered an outlier worth inspection. RMSZ is the root-mean-square of all Z scores of the bond lengths (or angles).

Mol	Chain	Bond lengths		Bond angles	
		RMSZ	$\# Z > 5$	RMSZ	$\# Z > 5$
1	A	0.92	1/3693 (0.0%)	0.93	4/5001 (0.1%)
1	B	0.99	0/3693	1.01	7/5001 (0.1%)
All	All	0.95	1/7386 (0.0%)	0.97	11/10002 (0.1%)

Chiral center outliers are detected by calculating the chiral volume of a chiral center and verifying if the center is modelled as a planar moiety or with the opposite hand. A planarity outlier is detected by checking planarity of atoms in a peptide group, atoms in a mainchain group or atoms of a sidechain that are expected to be planar.

Mol	Chain	#Chirality outliers	#Planarity outliers
1	A	0	2
1	B	0	1
All	All	0	3

All (1) bond length outliers are listed below:

Mol	Chain	Res	Type	Atoms	Z	Observed(Å)	Ideal(Å)
1	A	263	GLY	C-O	6.64	1.34	1.23

All (11) bond angle outliers are listed below:

Mol	Chain	Res	Type	Atoms	Z	Observed(°)	Ideal(°)
1	B	111	ARG	NE-CZ-NH1	13.14	126.87	120.30
1	B	111	ARG	NE-CZ-NH2	-11.27	114.66	120.30
1	B	279	LEU	CB-CG-CD1	-8.71	96.20	111.00
1	B	445	ARG	NE-CZ-NH1	7.87	124.23	120.30
1	B	367	ARG	NE-CZ-NH2	-7.46	116.57	120.30
1	A	323	ARG	NE-CZ-NH2	-6.38	117.11	120.30
1	A	296	ARG	NE-CZ-NH2	-6.07	117.26	120.30
1	A	287	ARG	NE-CZ-NH2	-5.71	117.44	120.30

Continued on next page...

Continued from previous page...

Mol	Chain	Res	Type	Atoms	Z	Observed(°)	Ideal(°)
1	A	367	ARG	NE-CZ-NH1	5.67	123.14	120.30
1	B	445	ARG	NE-CZ-NH2	-5.18	117.71	120.30
1	B	279	LEU	CB-CG-CD2	5.01	119.51	111.00

There are no chirality outliers.

All (3) planarity outliers are listed below:

Mol	Chain	Res	Type	Group
1	A	191	TYR	Sidechain
1	A	353	TYR	Sidechain
1	B	353	TYR	Sidechain

5.2 Too-close contacts

In the following table, the Non-H and H(model) columns list the number of non-hydrogen atoms and hydrogen atoms in the chain respectively. The H(added) column lists the number of hydrogen atoms added and optimized by MolProbity. The Clashes column lists the number of clashes within the asymmetric unit, whereas Symm-Clashes lists symmetry-related clashes.

Mol	Chain	Non-H	H(model)	H(added)	Clashes	Symm-Clashes
1	A	3624	0	3593	81	0
1	B	3624	0	3593	74	0
2	A	17	0	10	0	0
2	B	17	0	9	0	0
3	B	31	0	11	0	0
4	A	759	0	0	31	0
4	B	922	0	0	33	2
All	All	8994	0	7216	149	2

The all-atom clashscore is defined as the number of clashes found per 1000 atoms (including hydrogen atoms). The all-atom clashscore for this structure is 10.

All (149) close contacts within the same asymmetric unit are listed below, sorted by their clash magnitude.

Atom-1	Atom-2	Interatomic distance (Å)	Clash overlap (Å)
1:A:102:ASN:HB3	4:A:1173:HOH:O	1.26	1.36
1:A:217:GLN:HB3	4:A:1646:HOH:O	1.23	1.25
1:B:132:GLU:HG3	4:B:1015:HOH:O	1.49	1.09
1:B:369:GLN:HG2	4:B:1491:HOH:O	1.54	1.06

Continued on next page...

Continued from previous page...

Atom-1	Atom-2	Interatomic distance (Å)	Clash overlap (Å)
1:A:254:LEU:HD12	4:A:1278:HOH:O	1.59	1.00
1:B:383:GLN:HG2	4:B:1543:HOH:O	1.61	0.98
1:A:56:THR:HG23	1:A:59:GLU:H	1.30	0.95
1:A:395:GLN:HG3	4:A:1237:HOH:O	1.66	0.94
1:B:307:GLN:H	1:B:307:GLN:CD	1.70	0.93
1:B:6:ILE:HD13	1:B:155:ILE:CD1	1.98	0.93
1:A:341:ARG:HH12	1:A:383:GLN:NE2	1.67	0.91
1:A:246:GLY:HA3	4:A:1094:HOH:O	1.71	0.90
1:B:147:GLU:HG2	4:B:1455:HOH:O	1.69	0.90
1:B:88:LYS:NZ	4:B:1589:HOH:O	2.08	0.86
1:B:369:GLN:CG	4:B:1491:HOH:O	2.16	0.84
1:B:6:ILE:CD1	1:B:155:ILE:CD1	2.55	0.84
1:B:111:ARG:NH2	4:B:1433:HOH:O	2.11	0.83
1:B:6:ILE:HD11	1:B:155:ILE:HD12	1.61	0.83
1:A:213:GLU:OE1	1:A:240:THR:HG22	1.80	0.81
1:A:46:ASN:HB3	1:A:49:LYS:CG	2.10	0.81
1:A:262:THR:HG22	4:A:1174:HOH:O	1.79	0.81
1:A:402:GLN:HE22	1:B:413:GLN:HE22	1.30	0.80
1:A:341:ARG:HH12	1:A:383:GLN:HE21	1.29	0.80
1:A:46:ASN:HB3	1:A:49:LYS:HG3	1.63	0.79
1:A:246:GLY:CA	4:A:1094:HOH:O	2.27	0.79
1:A:254:LEU:CD1	4:A:1278:HOH:O	2.24	0.78
1:B:414:ILE:HD11	1:B:416:ILE:HD12	1.67	0.77
1:A:293:LYS:HE2	4:A:1278:HOH:O	1.85	0.76
1:B:6:ILE:CD1	1:B:155:ILE:HD12	2.15	0.76
1:B:221:GLU:OE1	4:B:1481:HOH:O	2.04	0.75
1:A:41:GLU:O	1:A:45:GLU:HG3	1.85	0.75
1:B:6:ILE:HD13	1:B:155:ILE:HD11	1.70	0.74
1:A:246:GLY:HA3	4:A:1093:HOH:O	1.87	0.73
1:A:108:THR:OG1	1:A:180:HIS:HD2	1.69	0.73
1:A:56:THR:CG2	1:A:59:GLU:HB2	2.19	0.73
1:A:56:THR:HG22	1:A:59:GLU:HB2	1.70	0.72
1:A:413:GLN:HE22	1:B:402:GLN:HE22	1.34	0.72
1:B:309:GLN:HB2	1:B:414:ILE:HG22	1.72	0.71
1:B:307:GLN:CD	1:B:307:GLN:N	2.45	0.68
1:A:245:ASP:HB2	1:A:247:ASN:ND2	2.08	0.68
1:A:259:ASN:HD22	1:A:261:GLY:H	1.41	0.67
1:B:256:GLU:CD	4:B:553:HOH:O	2.34	0.66
1:A:355:GLU:HG2	4:A:1204:HOH:O	1.96	0.65
1:B:40:GLU:OE2	4:B:1117:HOH:O	2.15	0.65
1:B:355:GLU:HG2	4:B:808:HOH:O	1.98	0.64

Continued on next page...

Continued from previous page...

Atom-1	Atom-2	Interatomic distance (Å)	Clash overlap (Å)
1:A:150:GLU:CG	4:A:956:HOH:O	2.45	0.63
1:A:468:ASP:HB2	4:A:1671:HOH:O	1.98	0.63
4:A:1354:HOH:O	1:B:260:LYS:HE3	1.99	0.63
1:B:164:GLU:HG2	4:B:762:HOH:O	1.99	0.62
1:A:458:LYS:NZ	4:A:1364:HOH:O	2.21	0.62
1:A:153:ALA:O	1:A:157:THR:HG23	1.99	0.61
1:A:262:THR:CG2	4:A:1174:HOH:O	2.41	0.61
1:B:18:LEU:HD12	1:B:73:MET:CE	2.31	0.61
1:B:217:GLN:NE2	1:B:221:GLU:OE2	2.34	0.60
1:A:21:ASN:O	1:A:25:ARG:HG2	2.01	0.60
1:B:69:ARG:NH1	4:B:855:HOH:O	2.34	0.60
1:B:380:GLU:HG2	4:B:1535:HOH:O	2.00	0.59
1:B:307:GLN:H	1:B:307:GLN:NE2	2.00	0.59
1:B:467:LEU:HD23	4:B:1037:HOH:O	2.03	0.58
1:A:146:LYS:NZ	4:A:927:HOH:O	2.34	0.58
1:A:146:LYS:O	1:A:150:GLU:HG3	2.03	0.58
1:B:414:ILE:HD11	1:B:416:ILE:CD1	2.33	0.58
1:B:309:GLN:CB	1:B:414:ILE:HG22	2.33	0.57
1:A:56:THR:CG2	1:A:59:GLU:H	2.11	0.57
1:A:102:ASN:OD1	4:A:967:HOH:O	2.18	0.57
4:A:1354:HOH:O	1:B:260:LYS:CE	2.51	0.57
1:B:38:LYS:HE2	4:B:1023:HOH:O	2.04	0.57
1:A:72:LEU:HD11	1:A:83:ALA:HB1	1.87	0.56
1:B:401:GLN:NE2	1:B:405:ARG:HH21	2.03	0.56
1:B:108:THR:OG1	1:B:180:HIS:HD2	1.89	0.55
1:A:46:ASN:HB3	1:A:49:LYS:HG2	1.87	0.55
1:A:108:THR:OG1	1:A:180:HIS:CD2	2.57	0.55
1:B:18:LEU:HD11	1:B:127:VAL:HG11	1.89	0.55
1:A:36:ARG:HD2	4:A:1630:HOH:O	2.06	0.55
1:A:186:HIS:CE1	1:A:364:CYS:HB2	2.43	0.54
1:A:402:GLN:NE2	1:B:413:GLN:HE22	2.02	0.54
1:A:401:GLN:NE2	1:A:405:ARG:HH21	2.06	0.54
1:A:131:GLU:HG3	4:A:969:HOH:O	2.08	0.53
1:A:150:GLU:HG2	4:A:956:HOH:O	2.08	0.53
1:A:56:THR:HG23	1:A:59:GLU:N	2.11	0.52
1:B:18:LEU:HD12	1:B:73:MET:HE2	1.91	0.52
1:A:245:ASP:HB2	1:A:247:ASN:HD22	1.75	0.51
1:A:136:LYS:HE2	4:A:971:HOH:O	2.10	0.51
1:B:254:LEU:HD21	1:B:256:GLU:OE1	2.11	0.51
1:A:3:LYS:HE2	1:A:62:GLU:O	2.10	0.51
1:A:355:GLU:CG	4:A:1204:HOH:O	2.55	0.51

Continued on next page...

Continued from previous page...

Atom-1	Atom-2	Interatomic distance (Å)	Clash overlap (Å)
1:B:126:GLY:HA3	1:B:183:LYS:HB2	1.93	0.51
1:B:186:HIS:CE1	1:B:364:CYS:HB2	2.45	0.51
1:A:128:SER:HB2	1:A:183:LYS:HE3	1.94	0.50
1:A:259:ASN:ND2	4:A:670:HOH:O	2.45	0.50
1:B:3:LYS:NZ	4:B:1052:HOH:O	2.44	0.50
1:B:5:GLN:HE21	1:B:28:THR:H	1.58	0.50
1:B:309:GLN:HB3	1:B:414:ILE:CG2	2.42	0.49
1:A:270:ALA:HB2	1:A:339:GLN:NE2	2.28	0.49
1:A:414:ILE:HD11	1:A:416:ILE:HD12	1.95	0.49
1:B:270:ALA:HB2	1:B:339:GLN:HE22	1.78	0.48
1:A:312:GLY:O	4:A:1214:HOH:O	2.20	0.48
1:B:81:ASP:CB	4:B:1433:HOH:O	2.61	0.48
1:A:270:ALA:HB2	1:A:339:GLN:HE22	1.79	0.48
1:A:36:ARG:HB2	1:A:55:TYR:CD2	2.48	0.48
1:A:309:GLN:HG3	4:A:790:HOH:O	2.13	0.48
1:B:310:PRO:HA	4:B:910:HOH:O	2.14	0.47
1:B:37:GLU:HB3	4:B:1645:HOH:O	2.14	0.47
1:A:243:ASP:OD2	1:A:244:GLU:N	2.40	0.47
1:A:373:LYS:HE2	4:A:590:HOH:O	2.14	0.46
1:B:309:GLN:CB	1:B:414:ILE:CG2	2.94	0.46
1:A:133:GLY:O	1:A:138:PRO:HD3	2.15	0.46
1:A:341:ARG:NH1	1:A:383:GLN:NE2	2.51	0.46
1:A:246:GLY:HA2	4:A:1094:HOH:O	2.04	0.46
1:B:108:THR:OG1	1:B:180:HIS:CD2	2.68	0.46
1:B:311:ALA:N	4:B:910:HOH:O	2.22	0.46
1:B:383:GLN:NE2	4:B:1543:HOH:O	2.33	0.46
1:B:373:LYS:HE3	1:B:392:TYR:CE1	2.51	0.45
1:A:56:THR:CG2	1:A:59:GLU:CB	2.92	0.45
1:A:402:GLN:HE22	1:B:413:GLN:NE2	2.07	0.45
1:B:203:LEU:HD21	1:B:411:ALA:HB2	1.99	0.45
1:A:54:TYR:HD1	1:A:59:GLU:HB3	1.80	0.45
1:B:34:ARG:HD2	4:B:1426:HOH:O	2.15	0.45
1:A:54:TYR:CZ	1:A:63:SER:HB3	2.52	0.45
1:A:305:GLY:HA2	1:B:401:GLN:HE22	1.82	0.45
1:A:205:LYS:O	1:A:209:ASN:HA	2.17	0.44
1:A:186:HIS:HD2	1:A:187:ASN:OD1	2.01	0.44
1:A:126:GLY:HA3	1:A:183:LYS:HB2	2.00	0.44
1:A:66:THR:HA	1:A:67:PRO:C	2.37	0.44
1:A:72:LEU:HD11	1:A:83:ALA:CB	2.48	0.44
1:A:88:LYS:HE3	1:A:118:GLU:OE1	2.19	0.43
1:B:217:GLN:OE1	4:B:1076:HOH:O	2.21	0.43

Continued on next page...

Continued from previous page...

Atom-1	Atom-2	Interatomic distance (Å)	Clash overlap (Å)
1:A:309:GLN:H	1:A:414:ILE:HG22	1.83	0.43
1:B:249:LEU:HD23	1:B:249:LEU:HA	1.86	0.43
1:A:302:VAL:HG11	4:B:1656:HOH:O	2.18	0.43
1:A:310:PRO:HA	4:A:1030:HOH:O	2.18	0.43
1:B:307:GLN:HB3	4:B:519:HOH:O	2.17	0.43
1:A:243:ASP:N	1:A:247:ASN:O	2.43	0.43
1:A:413:GLN:HE22	1:B:402:GLN:NE2	2.08	0.43
1:B:186:HIS:HD2	1:B:187:ASN:OD1	2.02	0.43
1:B:186:HIS:CE1	1:B:366:ILE:HG12	2.54	0.42
1:B:217:GLN:HG3	4:B:1079:HOH:O	2.18	0.42
1:B:369:GLN:HG3	4:B:1491:HOH:O	2.01	0.42
1:A:153:ALA:N	1:A:154:PRO:CD	2.83	0.42
1:B:137:GLY:O	1:B:161:ALA:HB2	2.20	0.41
1:B:467:LEU:HA	4:B:1037:HOH:O	2.19	0.41
1:B:49:LYS:CE	4:B:1070:HOH:O	2.68	0.41
1:B:49:LYS:HE2	4:B:1070:HOH:O	2.20	0.41
1:A:102:ASN:ND2	4:A:682:HOH:O	2.54	0.41
1:B:3:LYS:HE2	4:B:1392:HOH:O	2.20	0.40
1:B:38:LYS:CE	4:B:1023:HOH:O	2.67	0.40
1:B:5:GLN:C	1:B:6:ILE:HG13	2.41	0.40
1:B:309:GLN:HA	1:B:310:PRO:HD3	1.94	0.40
1:A:186:HIS:CE1	1:A:366:ILE:HG12	2.56	0.40

All (2) symmetry-related close contacts are listed below. The label for Atom-2 includes the symmetry operator and encoded unit-cell translations to be applied.

Atom-1	Atom-2	Interatomic distance (Å)	Clash overlap (Å)
4:B:1084:HOH:O	4:B:1395:HOH:O[4_556]	1.81	0.39
4:B:1209:HOH:O	4:B:1645:HOH:O[1_655]	2.09	0.11

5.3 Torsion angles ⓘ

5.3.1 Protein backbone ⓘ

In the following table, the Percentiles column shows the percent Ramachandran outliers of the chain as a percentile score with respect to all X-ray entries followed by that with respect to entries of similar resolution.

The Analysed column shows the number of residues for which the backbone conformation was analysed, and the total number of residues.

Mol	Chain	Analysed	Favoured	Allowed	Outliers	Percentiles	
1	A	465/480 (97%)	450 (97%)	15 (3%)	0	100	100
1	B	465/480 (97%)	451 (97%)	14 (3%)	0	100	100
All	All	930/960 (97%)	901 (97%)	29 (3%)	0	100	100

There are no Ramachandran outliers to report.

5.3.2 Protein sidechains ⓘ

In the following table, the Percentiles column shows the percent sidechain outliers of the chain as a percentile score with respect to all X-ray entries followed by that with respect to entries of similar resolution.

The Analysed column shows the number of residues for which the sidechain conformation was analysed, and the total number of residues.

Mol	Chain	Analysed	Rotameric	Outliers	Percentiles	
1	A	375/387 (97%)	373 (100%)	2 (0%)	88	78
1	B	375/387 (97%)	367 (98%)	8 (2%)	53	23
All	All	750/774 (97%)	740 (99%)	10 (1%)	69	44

All (10) residues with a non-rotameric sidechain are listed below:

Mol	Chain	Res	Type
1	A	16	ARG
1	A	106	GLN
1	B	84	ILE
1	B	106	GLN
1	B	145	GLN
1	B	279	LEU
1	B	307	GLN
1	B	309	GLN
1	B	383	GLN
1	B	447	TYR

Sometimes sidechains can be flipped to improve hydrogen bonding and reduce clashes. All (26) such sidechains are listed below:

Mol	Chain	Res	Type
1	A	5	GLN
1	A	17	ASN
1	A	102	ASN

Continued on next page...

Continued from previous page...

Mol	Chain	Res	Type
1	A	106	GLN
1	A	180	HIS
1	A	186	HIS
1	A	247	ASN
1	A	259	ASN
1	A	268	GLN
1	A	339	GLN
1	A	383	GLN
1	A	401	GLN
1	A	413	GLN
1	B	5	GLN
1	B	46	ASN
1	B	106	GLN
1	B	112	ASN
1	B	180	HIS
1	B	186	HIS
1	B	217	GLN
1	B	224	ASN
1	B	259	ASN
1	B	268	GLN
1	B	339	GLN
1	B	401	GLN
1	B	413	GLN

5.3.3 RNA ⓘ

There are no RNA molecules in this entry.

5.4 Non-standard residues in protein, DNA, RNA chains ⓘ

There are no non-standard protein/DNA/RNA residues in this entry.

5.5 Carbohydrates ⓘ

There are no monosaccharides in this entry.

5.6 Ligand geometry ⓘ

3 ligands are modelled in this entry.

In the following table, the Counts columns list the number of bonds (or angles) for which Mogul statistics could be retrieved, the number of bonds (or angles) that are observed in the model and the number of bonds (or angles) that are defined in the Chemical Component Dictionary. The Link column lists molecule types, if any, to which the group is linked. The Z score for a bond length (or angle) is the number of standard deviations the observed value is removed from the expected value. A bond length (or angle) with $|Z| > 2$ is considered an outlier worth inspection. RMSZ is the root-mean-square of all Z scores of the bond lengths (or angles).

Mol	Type	Chain	Res	Link	Bond lengths			Bond angles		
					Counts	RMSZ	# $ Z > 2$	Counts	RMSZ	# $ Z > 2$
3	ATR	B	2000	-	27,33,33	1.46	4 (14%)	35,52,52	1.34	5 (14%)
2	6PG	A	2002	-	13,16,16	1.66	3 (23%)	19,23,23	1.47	3 (15%)
2	6PG	B	2001	-	13,16,16	2.49	7 (53%)	19,23,23	2.34	5 (26%)

In the following table, the Chirals column lists the number of chiral outliers, the number of chiral centers analysed, the number of these observed in the model and the number defined in the Chemical Component Dictionary. Similar counts are reported in the Torsion and Rings columns. '-' means no outliers of that kind were identified.

Mol	Type	Chain	Res	Link	Chirals	Torsions	Rings
3	ATR	B	2000	-	-	2/17/37/37	0/3/3/3
2	6PG	A	2002	-	-	6/18/22/22	-
2	6PG	B	2001	-	-	7/18/22/22	-

All (14) bond length outliers are listed below:

Mol	Chain	Res	Type	Atoms	Z	Observed(Å)	Ideal(Å)
2	B	2001	6PG	O2-C2	-5.35	1.32	1.42
3	B	2000	ATR	C4-N3	4.15	1.41	1.35
2	B	2001	6PG	P-O1P	-3.92	1.37	1.50
3	B	2000	ATR	PB-O1B	3.36	1.61	1.50
2	A	2002	6PG	C6-C5	3.26	1.56	1.51
2	B	2001	6PG	C6-C5	3.19	1.56	1.51
2	B	2001	6PG	P-O2P	-3.13	1.42	1.54
2	A	2002	6PG	P-O3P	2.68	1.65	1.54
2	A	2002	6PG	O4-C4	2.67	1.49	1.43
3	B	2000	ATR	P2'-O2'	2.59	1.64	1.59
2	B	2001	6PG	O3-C3	2.38	1.48	1.43
3	B	2000	ATR	C2-N3	2.36	1.35	1.32
2	B	2001	6PG	O5-C5	2.23	1.48	1.43
2	B	2001	6PG	C4-C3	2.05	1.57	1.53

All (13) bond angle outliers are listed below:

Mol	Chain	Res	Type	Atoms	Z	Observed(°)	Ideal(°)
2	B	2001	6PG	O2P-P-O1P	5.81	133.44	110.68
2	B	2001	6PG	O3P-P-O1P	-4.48	93.14	110.68
2	B	2001	6PG	C5-C4-C3	4.24	119.09	112.47
2	B	2001	6PG	O3P-P-O2P	-3.85	92.92	107.64
2	A	2002	6PG	O2-C2-C3	3.09	114.39	107.39
3	B	2000	ATR	O3B-PB-O2B	2.85	118.52	107.64
3	B	2000	ATR	C2-N1-C6	2.68	123.34	118.75
2	B	2001	6PG	O2P-P-O6	2.59	113.62	106.73
3	B	2000	ATR	O4'-C1'-C2'	-2.54	102.18	106.59
2	A	2002	6PG	O2-C2-C1	-2.41	105.30	111.10
3	B	2000	ATR	C5-C6-N1	-2.27	115.20	120.35
3	B	2000	ATR	C5-C6-N6	2.27	123.80	120.35
2	A	2002	6PG	P-O6-C6	-2.19	112.27	118.30

There are no chirality outliers.

All (15) torsion outliers are listed below:

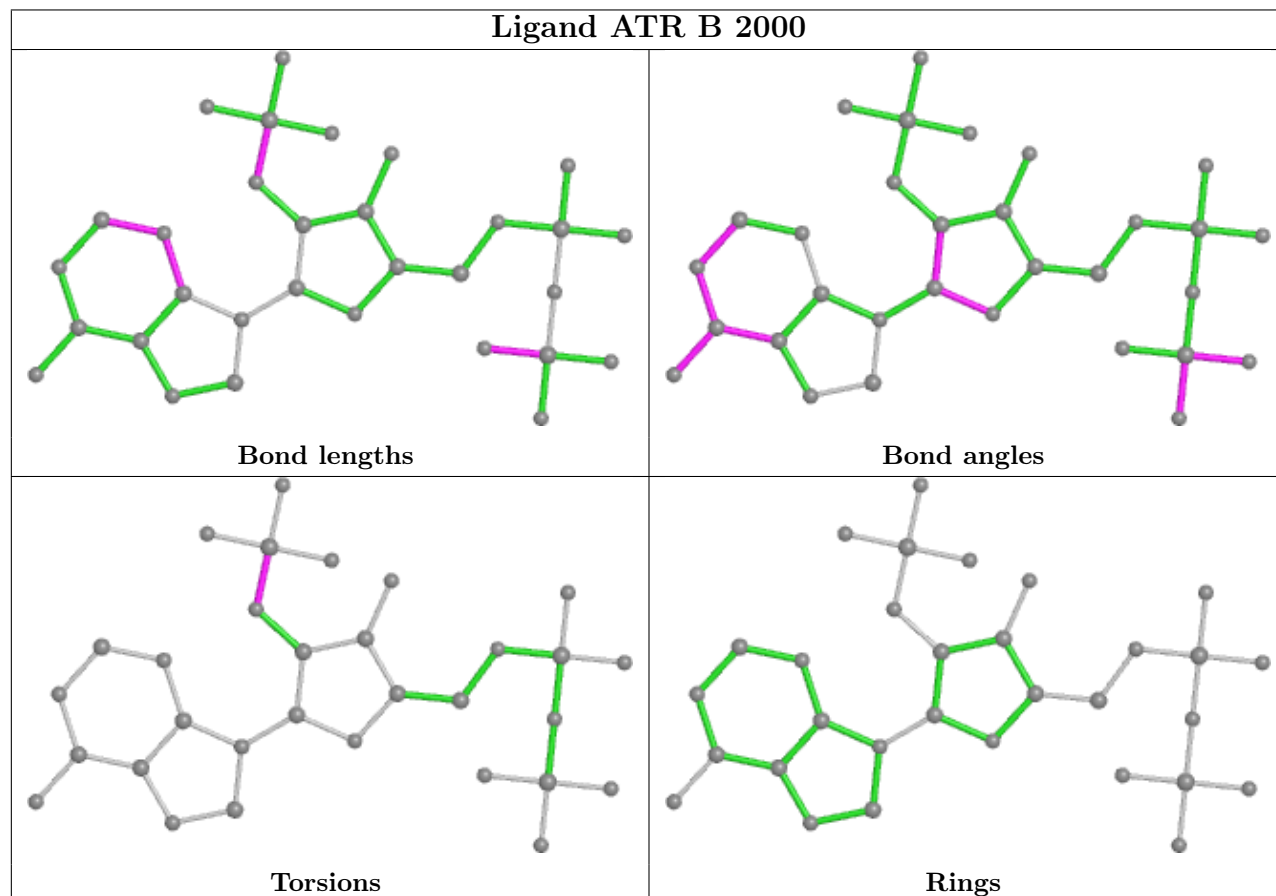
Mol	Chain	Res	Type	Atoms
3	B	2000	ATR	C2'-O2'-P2'-O1P
3	B	2000	ATR	C2'-O2'-P2'-O3P
2	A	2002	6PG	C3-C4-C5-C6
2	A	2002	6PG	C3-C4-C5-O5
2	B	2001	6PG	C3-C4-C5-C6
2	B	2001	6PG	C3-C4-C5-O5
2	A	2002	6PG	C2-C3-C4-C5
2	B	2001	6PG	C6-O6-P-O1P
2	A	2002	6PG	O4-C4-C5-O5
2	A	2002	6PG	C5-C6-O6-P
2	B	2001	6PG	C5-C6-O6-P
2	B	2001	6PG	O4-C4-C5-O5
2	B	2001	6PG	C2-C3-C4-C5
2	A	2002	6PG	O4-C4-C5-C6
2	B	2001	6PG	O4-C4-C5-C6

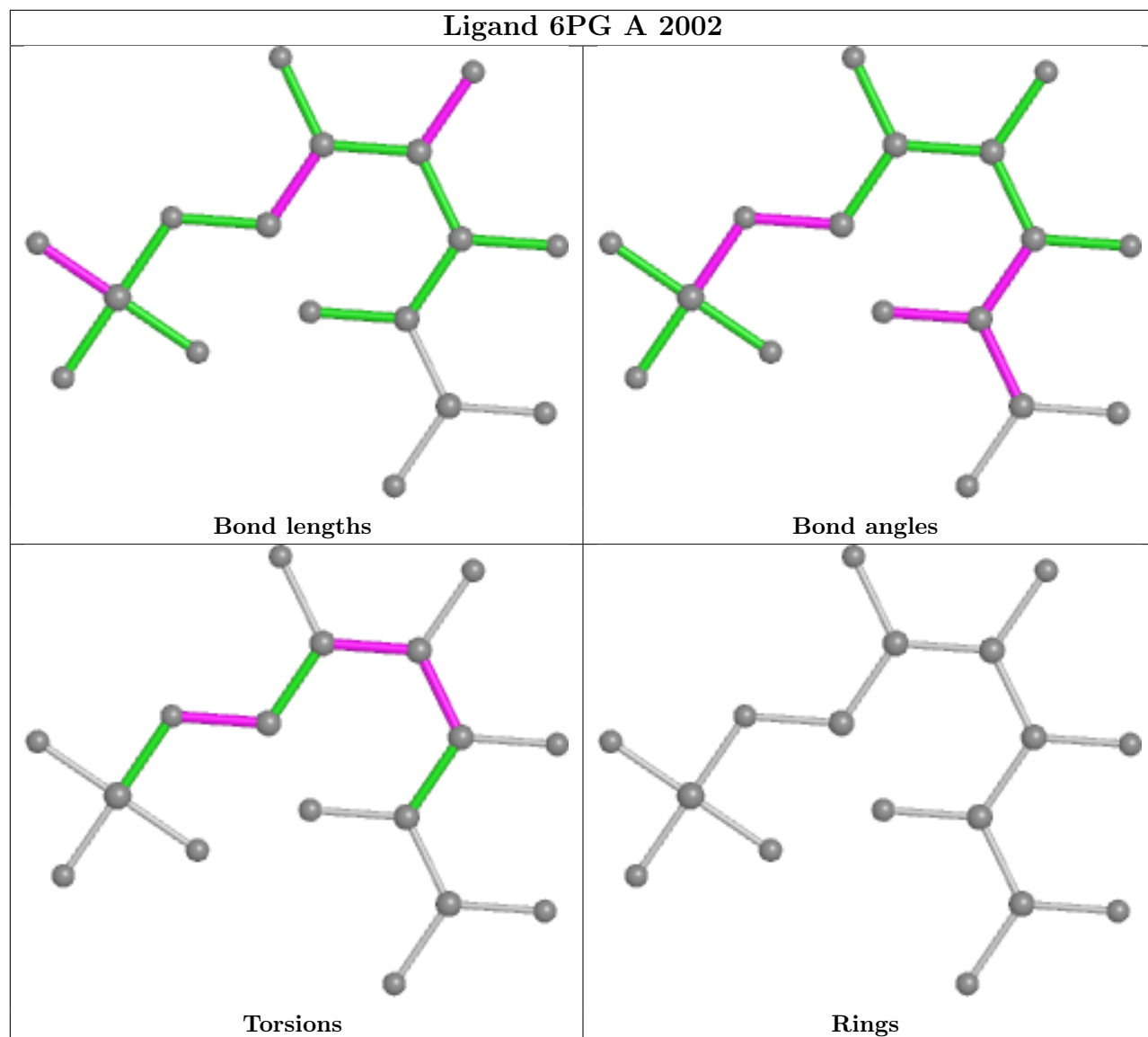
There are no ring outliers.

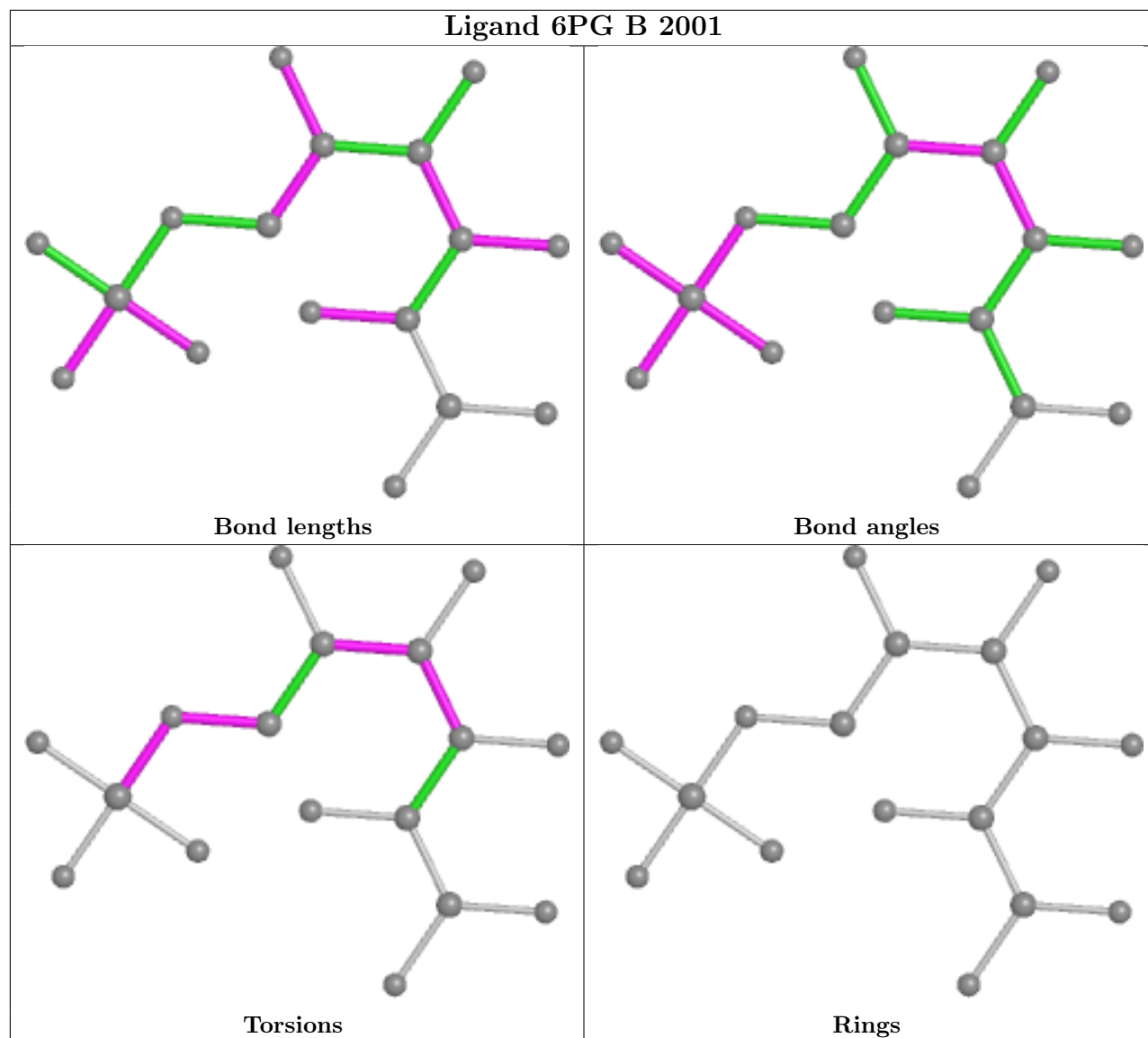
No monomer is involved in short contacts.

The following is a two-dimensional graphical depiction of Mogul quality analysis of bond lengths, bond angles, torsion angles, and ring geometry for all instances of the Ligand of Interest. In addition, ligands with molecular weight > 250 and outliers as shown on the validation Tables will also be included. For torsion angles, if less than 5% of the Mogul distribution of torsion angles is within 10 degrees of the torsion angle in question, then that torsion angle is considered an outlier. Any bond that is central to one or more torsion angles identified as an outlier by Mogul will be

highlighted in the graph. For rings, the root-mean-square deviation (RMSD) between the ring in question and similar rings identified by Mogul is calculated over all ring torsion angles. If the average RMSD is greater than 60 degrees and the minimal RMSD between the ring in question and any Mogul-identified rings is also greater than 60 degrees, then that ring is considered an outlier. The outliers are highlighted in purple. The color gray indicates Mogul did not find sufficient equivalents in the CSD to analyse the geometry.







5.7 Other polymers [i](#)

There are no such residues in this entry.

5.8 Polymer linkage issues [i](#)

There are no chain breaks in this entry.

6 Fit of model and data

6.1 Protein, DNA and RNA chains

In the following table, the column labelled ‘#RSRZ > 2’ contains the number (and percentage) of RSRZ outliers, followed by percent RSRZ outliers for the chain as percentile scores relative to all X-ray entries and entries of similar resolution. The OWAB column contains the minimum, median, 95th percentile and maximum values of the occupancy-weighted average B-factor per residue. The column labelled ‘Q < 0.9’ lists the number of (and percentage) of residues with an average occupancy less than 0.9.

Mol	Chain	Analysed	<RSRZ>	#RSRZ>2	OWAB(Å ²)	Q<0.9
1	A	467/480 (97%)	0.12	40 (8%) 10 11	7, 16, 49, 67	0
1	B	467/480 (97%)	-0.38	9 (1%) 66 71	6, 12, 27, 52	0
All	All	934/960 (97%)	-0.13	49 (5%) 27 30	6, 14, 42, 67	0

All (49) RSRZ outliers are listed below:

Mol	Chain	Res	Type	RSRZ
1	B	467	LEU	8.3
1	A	244	GLU	7.4
1	A	245	ASP	6.2
1	B	310	PRO	5.8
1	A	2	SER	5.3
1	A	309	GLN	4.4
1	A	90	TYR	4.3
1	A	468	ASP	4.1
1	A	13	VAL	4.0
1	A	310	PRO	4.0
1	B	244	GLU	3.9
1	A	43	ILE	3.8
1	B	308	ALA	3.8
1	A	307	GLN	3.6
1	A	57	VAL	3.5
1	A	82	ALA	3.4
1	A	89	PRO	3.4
1	B	246	GLY	3.4
1	A	308	ALA	3.4
1	A	56	THR	3.3
1	A	87	LEU	3.2
1	A	55	TYR	3.0
1	A	243	ASP	3.0
1	A	246	GLY	2.9

Continued on next page...

Continued from previous page...

Mol	Chain	Res	Type	RSRZ
1	B	307	GLN	2.8
1	A	31	ILE	2.7
1	A	247	ASN	2.7
1	B	245	ASP	2.7
1	B	468	ASP	2.7
1	A	60	PHE	2.7
1	A	32	PHE	2.6
1	A	102	ASN	2.6
1	A	46	ASN	2.5
1	A	80	THR	2.4
1	A	467	LEU	2.4
1	A	52	VAL	2.3
1	A	59	GLU	2.3
1	A	37	GLU	2.3
1	A	84	ILE	2.2
1	A	77	GLY	2.2
1	A	61	VAL	2.2
1	B	309	GLN	2.2
1	A	54	TYR	2.2
1	A	85	ASP	2.2
1	A	51	LEU	2.1
1	A	48	GLY	2.1
1	A	312	GLY	2.1
1	A	78	ALA	2.0
1	A	11	MET	2.0

6.2 Non-standard residues in protein, DNA, RNA chains ⓘ

There are no non-standard protein/DNA/RNA residues in this entry.

6.3 Carbohydrates ⓘ

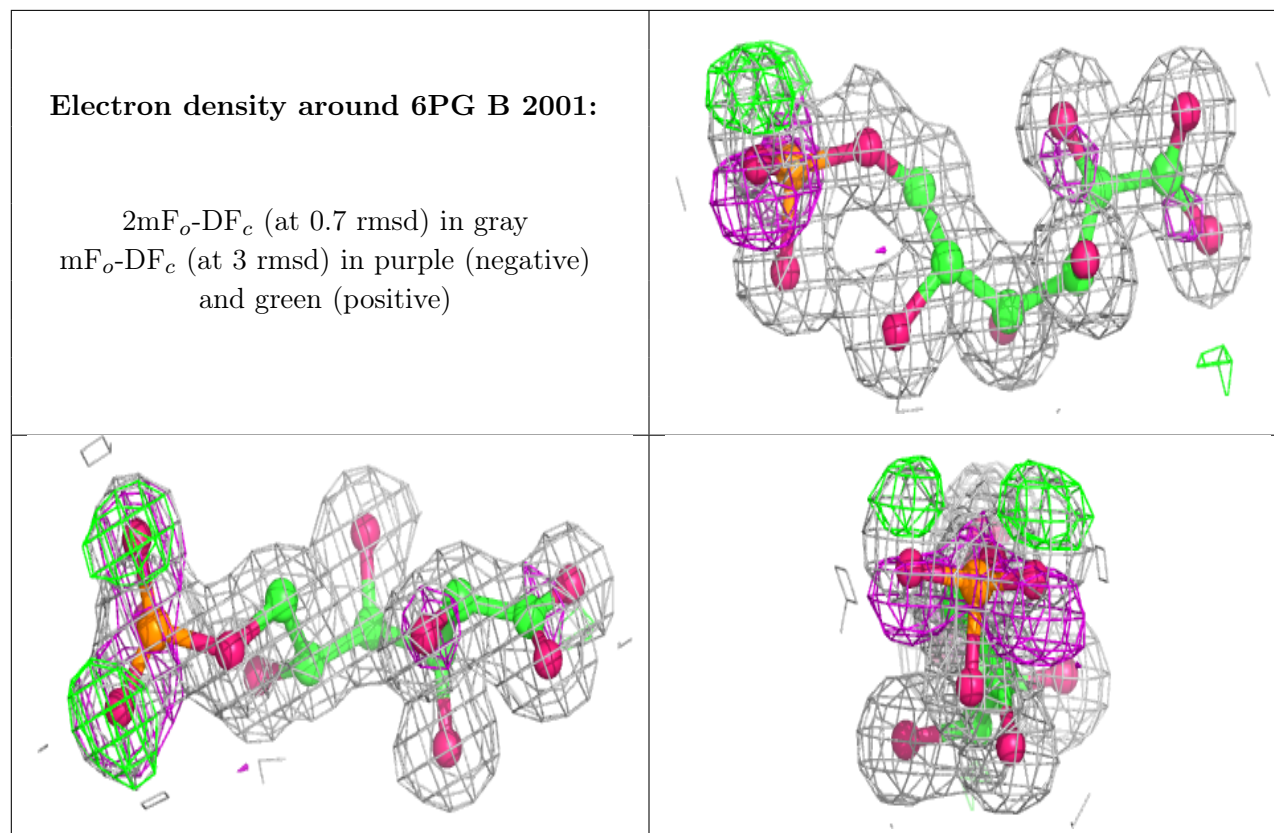
There are no monosaccharides in this entry.

6.4 Ligands ⓘ

In the following table, the Atoms column lists the number of modelled atoms in the group and the number defined in the chemical component dictionary. The B-factors column lists the minimum, median, 95th percentile and maximum values of B factors of atoms in the group. The column labelled 'Q< 0.9' lists the number of atoms with occupancy less than 0.9.

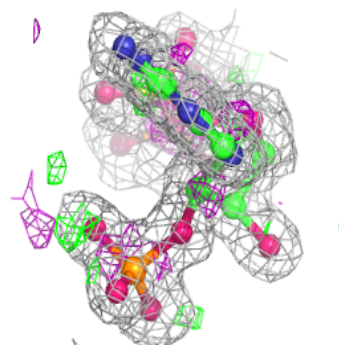
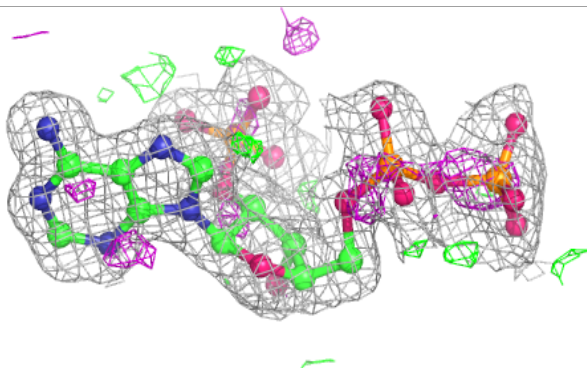
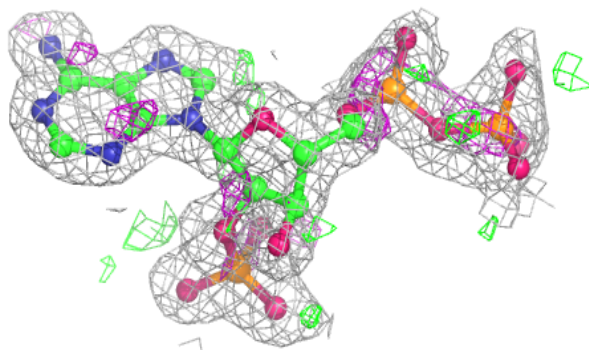
Mol	Type	Chain	Res	Atoms	RSCC	RSR	B-factors(\AA^2)	Q<0.9
2	6PG	B	2001	17/17	0.92	0.09	11,13,15,16	0
3	ATR	B	2000	31/31	0.93	0.13	18,21,51,53	0
2	6PG	A	2002	17/17	0.97	0.08	16,19,21,22	0

The following is a graphical depiction of the model fit to experimental electron density of all instances of the Ligand of Interest. In addition, ligands with molecular weight > 250 and outliers as shown on the geometry validation Tables will also be included. Each fit is shown from different orientation to approximate a three-dimensional view.

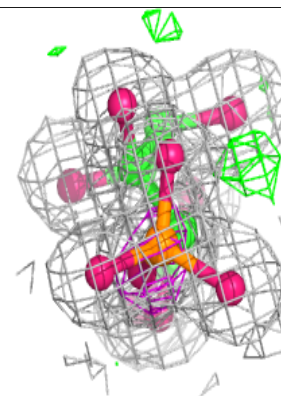
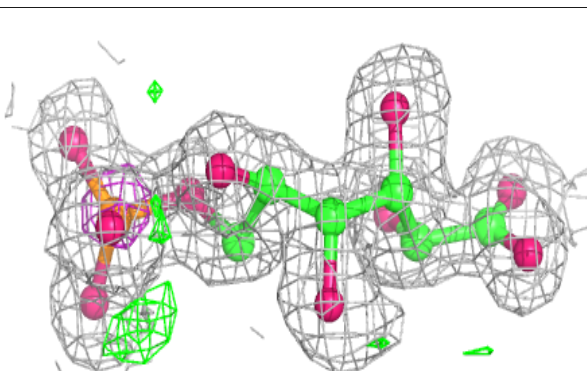
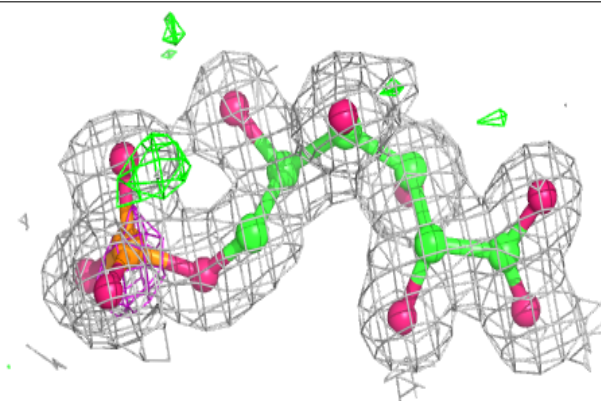


Electron density around ATR B 2000:

$2mF_o-DF_c$ (at 0.7 rmsd) in gray
 mF_o-DF_c (at 3 rmsd) in purple (negative)
and green (positive)

**Electron density around 6PG A 2002:**

$2mF_o-DF_c$ (at 0.7 rmsd) in gray
 mF_o-DF_c (at 3 rmsd) in purple (negative)
and green (positive)



6.5 Other polymers [i](#)

There are no such residues in this entry.