



Full wwPDB X-ray Structure Validation Report ⓘ

Aug 20, 2020 – 08:43 PM BST

PDB ID : 5FWN
Title : Imine Reductase from *Amycolatopsis orientalis*. Closed form in complex with (R)- Methyltetrahydroisoquinoline
Authors : Man, H.; Aleku, G.; Turner, N.J.; Grogan, G.
Deposited on : 2016-02-18
Resolution : 2.14 Å(reported)

This is a Full wwPDB X-ray Structure Validation Report for a publicly released PDB entry.

We welcome your comments at validation@mail.wwpdb.org

A user guide is available at

<https://www.wwpdb.org/validation/2017/XrayValidationReportHelp>

with specific help available everywhere you see the ⓘ symbol.

The following versions of software and data (see [references ⓘ](#)) were used in the production of this report:

MolProbity : 4.02b-467
Mogul : 1.8.5 (274361), CSD as541be (2020)
Xtriage (Phenix) : 1.13
EDS : 2.13.1
buster-report : 1.1.7 (2018)
Percentile statistics : 20191225.v01 (using entries in the PDB archive December 25th 2019)
Refmac : 5.8.0158
CCP4 : 7.0.044 (Gargrove)
Ideal geometry (proteins) : Engh & Huber (2001)
Ideal geometry (DNA, RNA) : Parkinson et al. (1996)
Validation Pipeline (wwPDB-VP) : 2.13.1

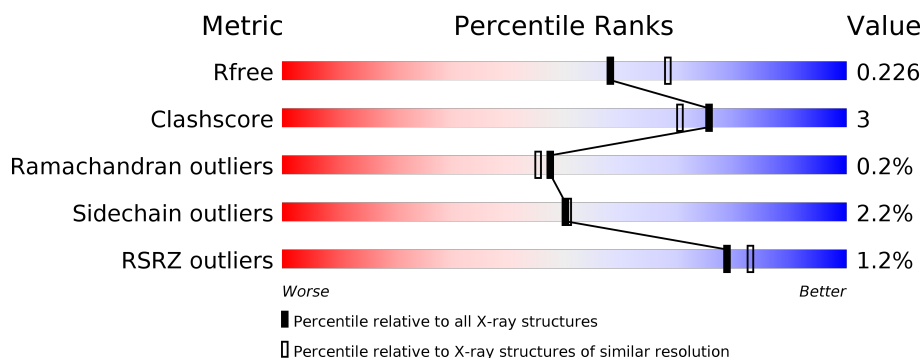
1 Overall quality at a glance

The following experimental techniques were used to determine the structure:

X-RAY DIFFRACTION



The reported resolution of this entry is 2.14 Å.

Percentile scores (ranging between 0-100) for global validation metrics of the entry are shown in the following graphic. The table shows the number of entries on which the scores are based.



Metric	Whole archive (#Entries)	Similar resolution (#Entries, resolution range(Å))
R_{free}	130704	2523 (2.16-2.12)
Clashscore	141614	2653 (2.16-2.12)
Ramachandran outliers	138981	2618 (2.16-2.12)
Sidechain outliers	138945	2617 (2.16-2.12)
RSRZ outliers	127900	2485 (2.16-2.12)

The table below summarises the geometric issues observed across the polymeric chains and their fit to the electron density. The red, orange, yellow and green segments on the lower bar indicate the fraction of residues that contain outliers for ≥ 3 , 2, 1 and 0 types of geometric quality criteria respectively. A grey segment represents the fraction of residues that are not modelled. The numeric value for each fraction is indicated below the corresponding segment, with a dot representing fractions $\leq 5\%$. The upper red bar (where present) indicates the fraction of residues that have poor fit to the electron density. The numeric value is given above the bar.

Mol	Chain	Length	Quality of chain
1	A	290	 86% 10% • •
1	B	290	 2% 91% 6% • •

2 Entry composition [i](#)

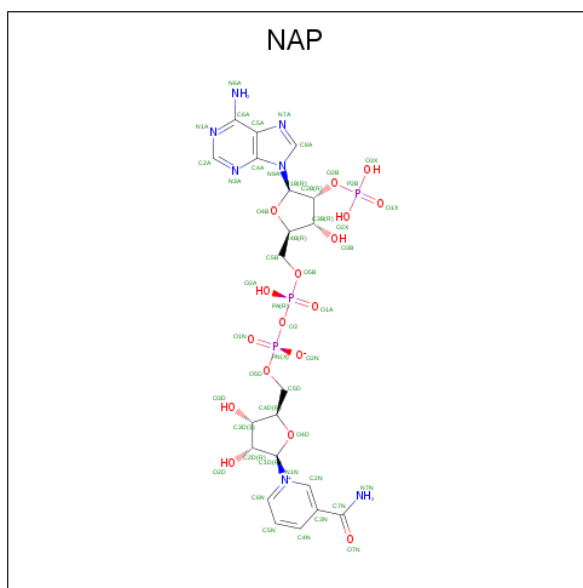
There are 5 unique types of molecules in this entry. The entry contains 4359 atoms, of which 0 are hydrogens and 0 are deuteriums.

In the tables below, the ZeroOcc column contains the number of atoms modelled with zero occupancy, the AltConf column contains the number of residues with at least one atom in alternate conformation and the Trace column contains the number of residues modelled with at most 2 atoms.

- Molecule 1 is a protein called IMINE REDUCTASE.

Mol	Chain	Residues	Atoms					ZeroOcc	AltConf	Trace
1	A	282	Total	C	N	O	S	0	1	0
			2053	1305	348	392	8			
1	B	282	Total	C	N	O	S	0	2	0
			2031	1300	338	385	8			

- Molecule 2 is NADP NICOTINAMIDE-ADENINE-DINUCLEOTIDE PHOSPHATE (three-letter code: NAP) (formula: $C_{21}H_{28}N_7O_{17}P_3$).



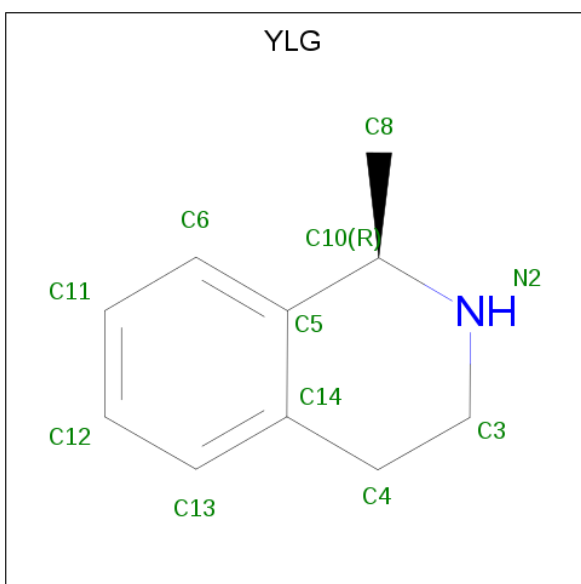
Mol	Chain	Residues	Atoms					ZeroOcc	AltConf
2	A	1	Total	C	N	O	P	0	0
			31	10	5	13	3		

- Molecule 3 is SULFATE ION (three-letter code: SO4) (formula: O_4S).



Mol	Chain	Residues	Atoms			ZeroOcc	AltConf
3	A	1	Total	O	S	0	0
			5	4	1		
3	A	1	Total	O	S	0	0
			5	4	1		
3	B	1	Total	O	S	0	0
			5	4	1		
3	B	1	Total	O	S	0	0
			5	4	1		

- Molecule 4 is (1R)-1-methyl-1,2,3,4-tetrahydroisoquinoline (three-letter code: YLG) (formula: C₁₀H₁₃N).



Mol	Chain	Residues	Atoms			ZeroOcc	AltConf
4	B	1	Total	C	N	0	0
			11	10	1		

- Molecule 5 is water.

Mol	Chain	Residues	Atoms		ZeroOcc	AltConf
5	A	123	Total	O	0	0
			123	123		
5	B	90	Total	O	0	0
			90	90		

- Molecule 1: IMINE REDUCTASE

- Molecule 1: IMINE REDUCTASE

MTT	THR	ASP	GLN	N5	R27	G39	D53	D54	Y72	D73	Y76	S96	I121	F135	M182	L191	L211	A221	L226	ASP	GLU	GLY	VAL	P231	P232	G233	S252	Q253	D258	R271	F277	L288	T289	T290
-----	-----	-----	-----	----	-----	-----	-----	-----	-----	-----	-----	-----	------	------	------	------	------	------	------	-----	-----	-----	-----	------	------	------	------	------	------	------	------	------	------	------

4 Data and refinement statistics

Property	Value	Source
Space group	P 21 21 21	Depositor
Cell constants a, b, c, α , β , γ	52.85Å 65.67Å 147.56Å 90.00° 90.00° 90.00°	Depositor
Resolution (Å)	73.78 – 2.14 60.00 – 2.14	Depositor EDS
% Data completeness (in resolution range)	100.0 (73.78-2.14) 100.0 (60.00-2.14)	Depositor EDS
R_{merge}	0.05	Depositor
R_{sym}	(Not available)	Depositor
$\langle I/\sigma(I) \rangle$ ¹	3.51 (at 2.14Å)	Xtriage
Refinement program	REFMAC 5.8.0135	Depositor
R, R_{free}	0.171 , 0.224 0.182 , 0.226	Depositor DCC
R_{free} test set	1426 reflections (4.90%)	wwPDB-VP
Wilson B-factor (Å ²)	25.4	Xtriage
Anisotropy	0.526	Xtriage
Bulk solvent k_{sol} (e/Å ³), B_{sol} (Å ²)	0.35 , 44.4	EDS
L-test for twinning ²	$\langle L \rangle = 0.47$, $\langle L^2 \rangle = 0.30$	Xtriage
Estimated twinning fraction	No twinning to report.	Xtriage
F_o, F_c correlation	0.95	EDS
Total number of atoms	4359	wwPDB-VP
Average B, all atoms (Å ²)	29.0	wwPDB-VP

Xtriage's analysis on translational NCS is as follows: *The largest off-origin peak in the Patterson function is 4.85% of the height of the origin peak. No significant pseudotranslation is detected.*

¹Intensities estimated from amplitudes.

²Theoretical values of $\langle |L| \rangle$, $\langle L^2 \rangle$ for acentric reflections are 0.5, 0.333 respectively for untwinned datasets, and 0.375, 0.2 for perfectly twinned datasets.

5 Model quality

5.1 Standard geometry

Bond lengths and bond angles in the following residue types are not validated in this section: YLG, NAP, SO4

The Z score for a bond length (or angle) is the number of standard deviations the observed value is removed from the expected value. A bond length (or angle) with $|Z| > 5$ is considered an outlier worth inspection. RMSZ is the root-mean-square of all Z scores of the bond lengths (or angles).

Mol	Chain	Bond lengths		Bond angles	
		RMSZ	$\# Z > 5$	RMSZ	$\# Z > 5$
1	A	0.80	1/2096 (0.0%)	0.90	7/2861 (0.2%)
1	B	0.80	1/2079 (0.0%)	0.94	8/2842 (0.3%)
All	All	0.80	2/4175 (0.0%)	0.92	15/5703 (0.3%)

Chiral center outliers are detected by calculating the chiral volume of a chiral center and verifying if the center is modelled as a planar moiety or with the opposite hand. A planarity outlier is detected by checking planarity of atoms in a peptide group, atoms in a mainchain group or atoms of a sidechain that are expected to be planar.

Mol	Chain	#Chirality outliers	#Planarity outliers
1	A	0	1
1	B	0	3
All	All	0	4

All (2) bond length outliers are listed below:

Mol	Chain	Res	Type	Atoms	Z	Observed(Å)	Ideal(Å)
1	B	221	ALA	C-N	-5.63	1.21	1.34
1	A	72	TYR	CB-CG	-5.22	1.43	1.51

All (15) bond angle outliers are listed below:

Mol	Chain	Res	Type	Atoms	Z	Observed(°)	Ideal(°)
1	B	221	ALA	O-C-N	-10.48	105.93	122.70
1	A	240	MET	CG-SD-CE	8.16	113.25	100.20
1	B	221	ALA	C-N-CA	7.43	140.27	121.70
1	B	221	ALA	CA-C-N	7.21	133.06	117.20
1	B	271	ARG	NE-CZ-NH2	-6.70	116.95	120.30
1	A	111	ARG	NE-CZ-NH1	6.34	123.47	120.30
1	B	258	ASP	CB-CG-OD1	6.15	123.84	118.30

Continued on next page...

Continued from previous page...

Mol	Chain	Res	Type	Atoms	Z	Observed(°)	Ideal(°)
1	A	258	ASP	CB-CG-OD1	5.85	123.56	118.30
1	A	54	ASP	CB-CG-OD1	5.81	123.53	118.30
1	B	96	SER	CA-C-N	5.65	127.50	116.20
1	A	271	ARG	NE-CZ-NH1	5.53	123.06	120.30
1	A	72	TYR	CA-CB-CG	-5.48	103.00	113.40
1	B	182	MET	CG-SD-CE	-5.19	91.89	100.20
1	B	27	ARG	NE-CZ-NH2	-5.06	117.77	120.30
1	A	94	LEU	CB-CG-CD1	5.00	119.51	111.00

There are no chirality outliers.

All (4) planarity outliers are listed below:

Mol	Chain	Res	Type	Group
1	A	275	ALA	Peptide
1	B	232	PRO	Peptide
1	B	233	GLY	Peptide
1	B	96	SER	Peptide

5.2 Too-close contacts ⓘ

In the following table, the Non-H and H(model) columns list the number of non-hydrogen atoms and hydrogen atoms in the chain respectively. The H(added) column lists the number of hydrogen atoms added and optimized by MolProbity. The Clashes column lists the number of clashes within the asymmetric unit, whereas Symm-Clashes lists symmetry related clashes.

Mol	Chain	Non-H	H(model)	H(added)	Clashes	Symm-Clashes
1	A	2053	0	2023	20	2
1	B	2031	0	1985	8	1
2	A	31	0	11	1	0
3	A	10	0	0	0	0
3	B	10	0	0	1	0
4	B	11	0	0	0	0
5	A	123	0	0	4	1
5	B	90	0	0	0	0
All	All	4359	0	4019	25	2

The all-atom clashscore is defined as the number of clashes found per 1000 atoms (including hydrogen atoms). The all-atom clashscore for this structure is 3.

All (25) close contacts within the same asymmetric unit are listed below, sorted by their clash magnitude.

Atom-1	Atom-2	Interatomic distance (Å)	Clash overlap (Å)
1:A:126:ALA:HB3	1:B:232:PRO:O	1.77	0.85
1:A:72:TYR:CE2	1:A:105:ALA:HB2	2.18	0.79
1:A:72:TYR:CE2	1:A:101:GLU:O	2.45	0.68
1:A:86:LEU:HB3	1:A:114:THR:HG21	1.75	0.68
1:A:72:TYR:HE2	1:A:105:ALA:HB2	1.61	0.65
1:A:72:TYR:HE1	1:A:96:SER:HA	1.64	0.63
1:A:126:ALA:CB	1:B:232:PRO:O	2.46	0.62
1:A:211:LEU:HG	1:B:211:LEU:HD21	1.84	0.60
1:A:270:ASP:O	1:A:273:VAL:HG22	2.05	0.57
1:A:127:MET:HG2	1:B:232:PRO:HD2	1.87	0.56
1:A:29:HIS:HE1	5:A:2012:HOH:O	1.88	0.56
1:A:72:TYR:CE1	1:A:96:SER:HA	2.42	0.54
1:B:191:LEU:HD21	1:B:252:SER:HA	1.92	0.51
1:A:87:ARG:NH1	5:A:2039:HOH:O	2.27	0.49
1:A:13:LEU:H	1:A:35:ASN:ND2	2.12	0.48
1:A:264:ARG:NH1	5:A:2107:HOH:O	2.44	0.46
1:A:269:LEU:O	1:A:273:VAL:HG13	2.17	0.45
1:B:121:ILE:HG12	1:B:135:PHE:CE2	2.53	0.44
2:A:1291:NAP:C8A	5:A:2018:HOH:O	2.66	0.43
1:A:139:GLY:O	1:A:159:HIS:HE1	2.01	0.43
1:B:277:PHE:CD1	1:B:277:PHE:N	2.85	0.43
1:A:6:LEU:O	1:A:29:HIS:HD2	2.01	0.43
1:B:76:TYR:HE2	3:B:1293:SO4:O1	2.03	0.41
1:A:96:SER:HB2	1:A:168:VAL:HG21	2.02	0.41
1:A:9:THR:HA	1:A:32:THR:O	2.21	0.41

All (2) symmetry-related close contacts are listed below. The label for Atom-2 includes the symmetry operator and encoded unit-cell translations to be applied.

Atom-1	Atom-2	Interatomic distance (Å)	Clash overlap (Å)
1:A:36:ARG:NH1	1:B:253:GLN:O[3_455]	2.13	0.07
1:A:84:GLU:CG	5:A:2112:HOH:O[3_455]	2.16	0.04

5.3 Torsion angles ⓘ

5.3.1 Protein backbone ⓘ

In the following table, the Percentiles column shows the percent Ramachandran outliers of the chain as a percentile score with respect to all X-ray entries followed by that with respect to entries of similar resolution.

The Analysed column shows the number of residues for which the backbone conformation was analysed, and the total number of residues.

Mol	Chain	Analysed	Favoured	Allowed	Outliers	Percentiles	
1	A	277/290 (96%)	268 (97%)	9 (3%)	0	100	100
1	B	280/290 (97%)	266 (95%)	13 (5%)	1 (0%)	34	29
All	All	557/580 (96%)	534 (96%)	22 (4%)	1 (0%)	47	45

All (1) Ramachandran outliers are listed below:

Mol	Chain	Res	Type
1	B	232	PRO

5.3.2 Protein sidechains ⓘ

In the following table, the Percentiles column shows the percent sidechain outliers of the chain as a percentile score with respect to all X-ray entries followed by that with respect to entries of similar resolution.

The Analysed column shows the number of residues for which the sidechain conformation was analysed, and the total number of residues.

Mol	Chain	Analysed	Rotameric	Outliers	Percentiles	
1	A	205/219 (94%)	200 (98%)	5 (2%)	49	49
1	B	197/219 (90%)	193 (98%)	4 (2%)	55	57
All	All	402/438 (92%)	393 (98%)	9 (2%)	50	53

All (9) residues with a non-rotameric sidechain are listed below:

Mol	Chain	Res	Type
1	A	94	LEU
1	A	114	THR
1	A	148	LYS
1	A	154	LEU
1	A	240	MET
1	B	53	ASP
1	B	54	ASP
1	B	277	PHE
1	B	288	LEU

Some sidechains can be flipped to improve hydrogen bonding and reduce clashes. All (10) such sidechains are listed below:

Mol	Chain	Res	Type
1	A	29	HIS
1	A	35	ASN
1	A	159	HIS
1	A	183	ASN
1	A	241	ASN
1	B	51	GLN
1	B	103	ASN
1	B	183	ASN
1	B	241	ASN
1	B	265	ASN

5.3.3 RNA [i](#)

There are no RNA molecules in this entry.

5.4 Non-standard residues in protein, DNA, RNA chains [i](#)

There are no non-standard protein/DNA/RNA residues in this entry.

5.5 Carbohydrates [i](#)

There are no monosaccharides in this entry.

5.6 Ligand geometry [i](#)

6 ligands are modelled in this entry.

In the following table, the Counts columns list the number of bonds (or angles) for which Mogul statistics could be retrieved, the number of bonds (or angles) that are observed in the model and the number of bonds (or angles) that are defined in the Chemical Component Dictionary. The Link column lists molecule types, if any, to which the group is linked. The Z score for a bond length (or angle) is the number of standard deviations the observed value is removed from the expected value. A bond length (or angle) with $|Z| > 2$ is considered an outlier worth inspection. RMSZ is the root-mean-square of all Z scores of the bond lengths (or angles).

Mol	Type	Chain	Res	Link	Bond lengths			Bond angles		
					Counts	RMSZ	$\# Z > 2$	Counts	RMSZ	$\# Z > 2$
3	SO4	A	1292	-	4,4,4	0.55	0	6,6,6	0.89	0
3	SO4	B	1292	-	4,4,4	0.73	0	6,6,6	0.57	0
4	YLG	B	1291	-	12,12,12	3.03	2 (16%)	14,16,16	1.01	1 (7%)
3	SO4	A	1293	-	4,4,4	0.40	0	6,6,6	0.28	0
3	SO4	B	1293	-	4,4,4	0.49	0	6,6,6	0.30	0

Mol	Type	Chain	Res	Link	Bond lengths			Bond angles		
					Counts	RMSZ	# Z > 2	Counts	RMSZ	# Z > 2
2	NAP	A	1291	-	27,33,52	1.18	3 (11%)	35,52,80	1.44	6 (17%)

In the following table, the Chirals column lists the number of chiral outliers, the number of chiral centers analysed, the number of these observed in the model and the number defined in the Chemical Component Dictionary. Similar counts are reported in the Torsion and Rings columns. '-' means no outliers of that kind were identified.

Mol	Type	Chain	Res	Link	Chirals	Torsions	Rings
2	NAP	A	1291	-	-	9/17/37/67	0/3/3/5
4	YLG	B	1291	-	-	-	0/2/2/2

All (5) bond length outliers are listed below:

Mol	Chain	Res	Type	Atoms	Z	Observed(Å)	Ideal(Å)
4	B	1291	YLG	C4-C14	-8.64	1.36	1.51
4	B	1291	YLG	C5-C10	-5.47	1.42	1.51
2	A	1291	NAP	C5A-C4A	2.88	1.48	1.40
2	A	1291	NAP	C2A-N3A	2.49	1.36	1.32
2	A	1291	NAP	PN-O5D	2.46	1.64	1.54

All (7) bond angle outliers are listed below:

Mol	Chain	Res	Type	Atoms	Z	Observed(°)	Ideal(°)
2	A	1291	NAP	N3A-C2A-N1A	-3.51	123.19	128.68
2	A	1291	NAP	N6A-C6A-N1A	2.86	124.50	118.57
2	A	1291	NAP	C1B-N9A-C4A	-2.38	122.47	126.64
2	A	1291	NAP	O2B-P2B-O1X	-2.25	100.69	109.39
4	B	1291	YLG	C4-C14-C13	-2.11	116.55	120.98
2	A	1291	NAP	C5A-C6A-N6A	-2.09	117.17	120.35
2	A	1291	NAP	O3X-P2B-O2X	2.06	115.51	107.64

There are no chirality outliers.

All (9) torsion outliers are listed below:

Mol	Chain	Res	Type	Atoms
2	A	1291	NAP	C5B-O5B-PA-O1A
2	A	1291	NAP	C5B-O5B-PA-O2A
2	A	1291	NAP	C5B-O5B-PA-O3
2	A	1291	NAP	O4B-C4B-C5B-O5B
2	A	1291	NAP	C3B-C4B-C5B-O5B
2	A	1291	NAP	PA-O3-PN-O5D

Continued on next page...

Continued from previous page...

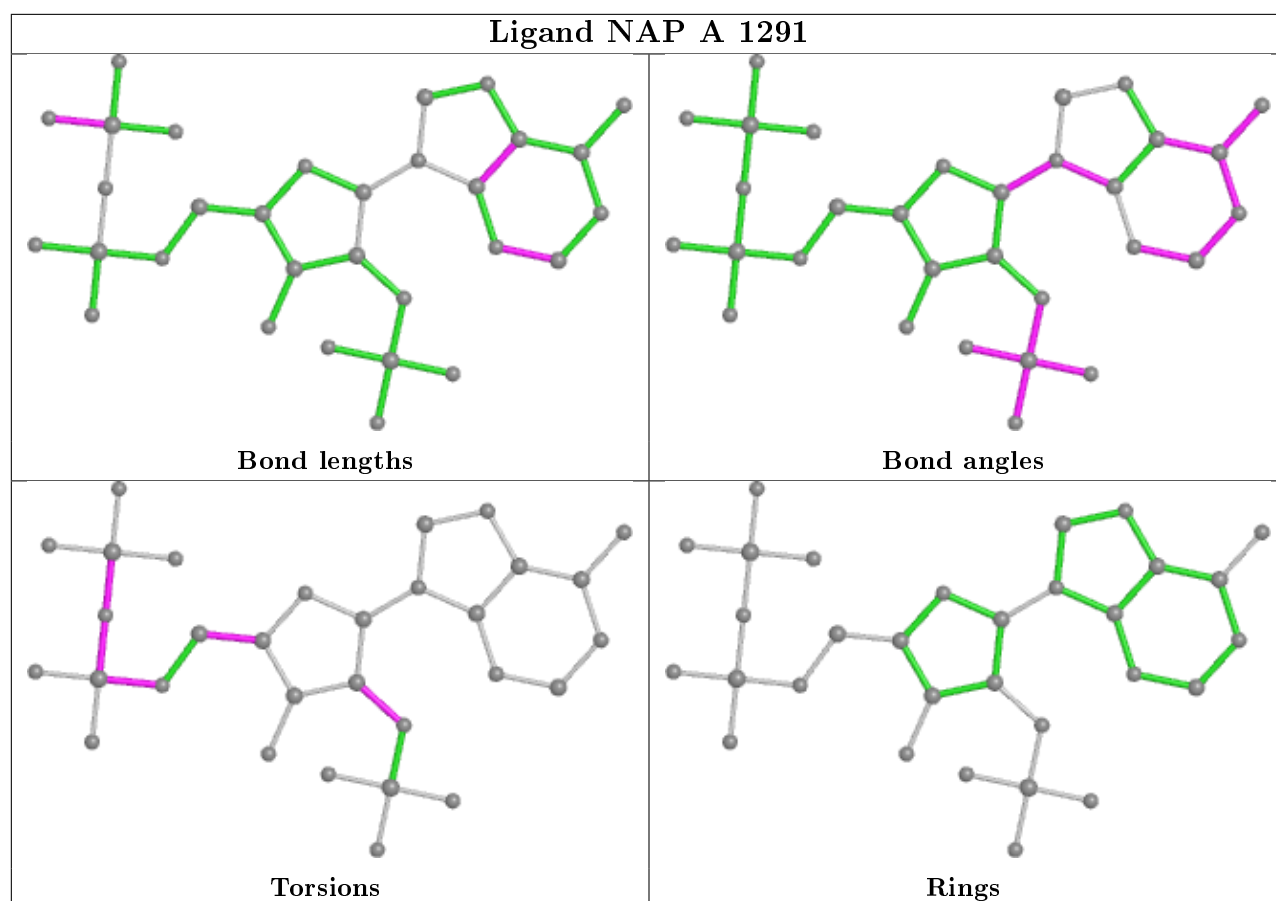
Mol	Chain	Res	Type	Atoms
2	A	1291	NAP	C3B-C2B-O2B-P2B
2	A	1291	NAP	C1B-C2B-O2B-P2B
2	A	1291	NAP	PN-O3-PA-O1A

There are no ring outliers.

2 monomers are involved in 2 short contacts:

Mol	Chain	Res	Type	Clashes	Symm-Clashes
3	B	1293	SO4	1	0
2	A	1291	NAP	1	0

The following is a two-dimensional graphical depiction of Mogul quality analysis of bond lengths, bond angles, torsion angles, and ring geometry for all instances of the Ligand of Interest. In addition, ligands with molecular weight > 250 and outliers as shown on the validation Tables will also be included. For torsion angles, if less than 5% of the Mogul distribution of torsion angles is within 10 degrees of the torsion angle in question, then that torsion angle is considered an outlier. Any bond that is central to one or more torsion angles identified as an outlier by Mogul will be highlighted in the graph. For rings, the root-mean-square deviation (RMSD) between the ring in question and similar rings identified by Mogul is calculated over all ring torsion angles. If the average RMSD is greater than 60 degrees and the minimal RMSD between the ring in question and any Mogul-identified rings is also greater than 60 degrees, then that ring is considered an outlier. The outliers are highlighted in purple. The color gray indicates Mogul did not find sufficient equivalents in the CSD to analyse the geometry.



5.7 Other polymers [i](#)

There are no such residues in this entry.

5.8 Polymer linkage issues [i](#)

There are no chain breaks in this entry.

6 Fit of model and data [i](#)

6.1 Protein, DNA and RNA chains [i](#)

In the following table, the column labelled ‘#RSRZ> 2’ contains the number (and percentage) of RSRZ outliers, followed by percent RSRZ outliers for the chain as percentile scores relative to all X-ray entries and entries of similar resolution. The OWAB column contains the minimum, median, 95th percentile and maximum values of the occupancy-weighted average B-factor per residue. The column labelled ‘Q< 0.9’ lists the number of (and percentage) of residues with an average occupancy less than 0.9.

Mol	Chain	Analysed	<RSRZ>	#RSRZ>2	OWAB(Å ²)	Q<0.9
1	A	282/290 (97%)	-0.22	1 (0%) 92 94	16, 26, 44, 63	0
1	B	282/290 (97%)	-0.10	6 (2%) 63 69	16, 26, 48, 71	0
All	All	564/580 (97%)	-0.16	7 (1%) 79 83	16, 26, 47, 71	0

All (7) RSRZ outliers are listed below:

Mol	Chain	Res	Type	RSRZ
1	A	72	TYR	4.6
1	B	53	ASP	3.7
1	B	76	TYR	2.8
1	B	231	TYR	2.7
1	B	73	ASP	2.3
1	B	72	TYR	2.1
1	B	39	GLY	2.1

6.2 Non-standard residues in protein, DNA, RNA chains [i](#)

There are no non-standard protein/DNA/RNA residues in this entry.

6.3 Carbohydrates [i](#)

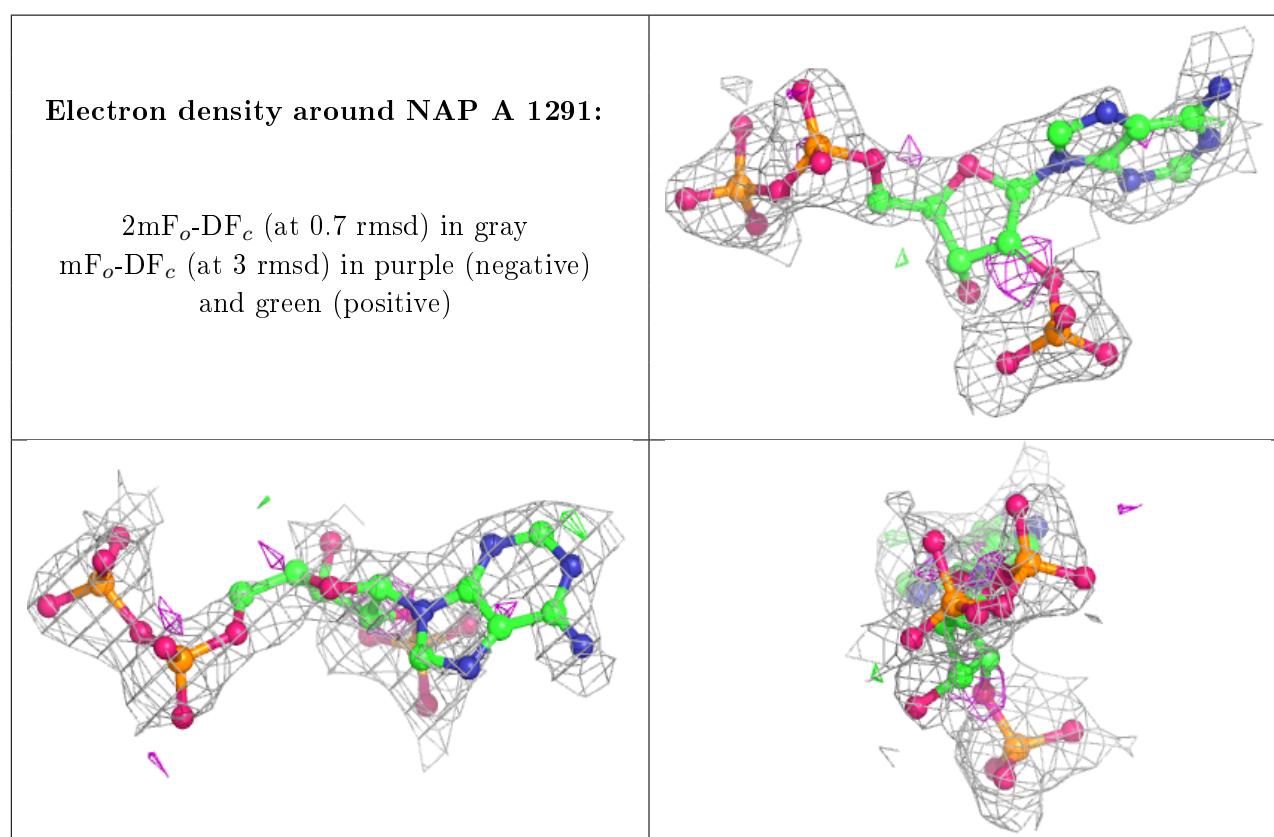
There are no monosaccharides in this entry.

6.4 Ligands [i](#)

In the following table, the Atoms column lists the number of modelled atoms in the group and the number defined in the chemical component dictionary. The B-factors column lists the minimum, median, 95th percentile and maximum values of B factors of atoms in the group. The column labelled ‘Q< 0.9’ lists the number of atoms with occupancy less than 0.9.

Mol	Type	Chain	Res	Atoms	RSCC	RSR	B-factors(\AA^2)	Q<0.9
2	NAP	A	1291	31/48	0.77	0.25	54,74,86,88	0
4	YLG	B	1291	11/11	0.84	0.20	50,54,57,58	0
3	SO4	B	1292	5/5	0.90	0.34	53,57,64,65	0
3	SO4	A	1292	5/5	0.93	0.14	42,43,46,56	0
3	SO4	B	1293	5/5	0.94	0.25	58,61,64,70	0
3	SO4	A	1293	5/5	0.96	0.13	53,54,57,60	0

The following is a graphical depiction of the model fit to experimental electron density of all instances of the Ligand of Interest. In addition, ligands with molecular weight > 250 and outliers as shown on the geometry validation Tables will also be included. Each fit is shown from different orientation to approximate a three-dimensional view.



6.5 Other polymers [i](#)

There are no such residues in this entry.