



Full wwPDB X-ray Structure Validation Report ⓘ

Aug 7, 2020 – 06:09 AM BST

PDB ID : 4FYT
Title : Human aminopeptidase N (CD13) in complex with amastatin
Authors : Wong, A.H.; Rini, J.M.
Deposited on : 2012-07-05
Resolution : 1.85 Å(reported)

This is a Full wwPDB X-ray Structure Validation Report for a publicly released PDB entry.

We welcome your comments at validation@mail.wwpdb.org

A user guide is available at

<https://www.wwpdb.org/validation/2017/XrayValidationReportHelp>

with specific help available everywhere you see the ⓘ symbol.

The following versions of software and data (see [references ⓘ](#)) were used in the production of this report:

MolProbity : 4.02b-467
Mogul : 1.8.5 (274361), CSD as541be (2020)
Xtriage (Phenix) : 1.13
EDS : 2.13.1
Percentile statistics : 20191225.v01 (using entries in the PDB archive December 25th 2019)
Refmac : 5.8.0158
CCP4 : 7.0.044 (Gargrove)
Ideal geometry (proteins) : Engh & Huber (2001)
Ideal geometry (DNA, RNA) : Parkinson et al. (1996)
Validation Pipeline (wwPDB-VP) : 2.13.1

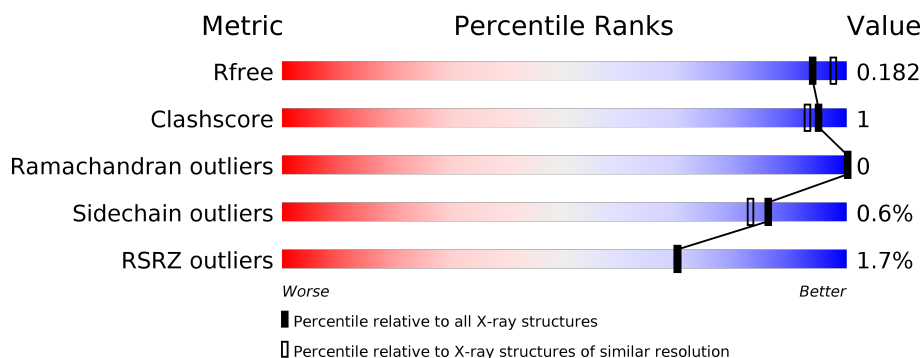
1 Overall quality at a glance

The following experimental techniques were used to determine the structure:

X-RAY DIFFRACTION

The reported resolution of this entry is 1.85 Å.

Percentile scores (ranging between 0-100) for global validation metrics of the entry are shown in the following graphic. The table shows the number of entries on which the scores are based.



Metric	Whole archive (#Entries)	Similar resolution (#Entries, resolution range(Å))
R_{free}	130704	2469 (1.86-1.86)
Clashscore	141614	2625 (1.86-1.86)
Ramachandran outliers	138981	2592 (1.86-1.86)
Sidechain outliers	138945	2592 (1.86-1.86)
RSRZ outliers	127900	2436 (1.86-1.86)

The table below summarises the geometric issues observed across the polymeric chains and their fit to the electron density. The red, orange, yellow and green segments on the lower bar indicate the fraction of residues that contain outliers for ≥ 3 , 2, 1 and 0 types of geometric quality criteria respectively. A grey segment represents the fraction of residues that are not modelled. The numeric value for each fraction is indicated below the corresponding segment, with a dot representing fractions $\leq 5\%$. The upper red bar (where present) indicates the fraction of residues that have poor fit to the electron density. The numeric value is given above the bar.

Mol	Chain	Length	Quality of chain
1	A	903	<div> <div>2%</div> <div>97%</div> <div>.</div> </div>
2	B	4	<div> <div>25%</div> <div>50%</div> <div>25%</div> <div>25%</div> </div>
3	C	2	<div> <div>100%</div> </div>
3	D	2	<div> <div>50%</div> <div>50%</div> </div>
3	E	2	<div> <div>100%</div> </div>

2 Entry composition

There are 7 unique types of molecules in this entry. The entry contains 8238 atoms, of which 0 are hydrogens and 0 are deuteriums.

In the tables below, the ZeroOcc column contains the number of atoms modelled with zero occupancy, the AltConf column contains the number of residues with at least one atom in alternate conformation and the Trace column contains the number of residues modelled with at most 2 atoms.

- Molecule 1 is a protein called Aminopeptidase N.

Mol	Chain	Residues	Atoms					ZeroOcc	AltConf	Trace
1	A	903	Total	C	N	O	S	0	5	0
			7323	4670	1237	1392	24			

There is a discrepancy between the modelled and reference sequences:

Chain	Residue	Modelled	Actual	Comment	Reference
A	65	PRO	-	expression tag	UNP P15144

- Molecule 2 is a protein called AMASTATIN.

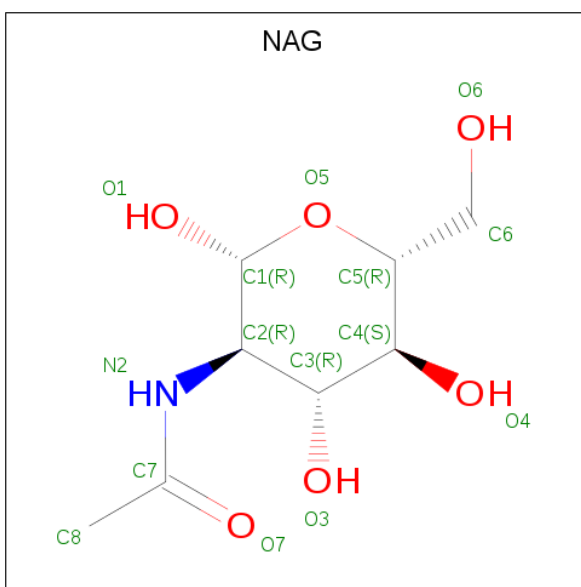
Mol	Chain	Residues	Atoms				ZeroOcc	AltConf	Trace
2	B	4	Total	C	N	O	0	0	0
			33	21	4	8			

- Molecule 3 is an oligosaccharide called 2-acetamido-2-deoxy-beta-D-glucopyranose-(1-4)-2-acetamido-2-deoxy-beta-D-glucopyranose.



Mol	Chain	Residues	Atoms				ZeroOcc	AltConf	Trace
3	C	2	Total	C	N	O	0	0	0
			28	16	2	10			
3	D	2	Total	C	N	O	0	0	0
			28	16	2	10			
3	E	2	Total	C	N	O	0	0	0
			28	16	2	10			

- Molecule 4 is 2-acetamido-2-deoxy-beta-D-glucopyranose (three-letter code: NAG) (formula: C₈H₁₅NO₆).

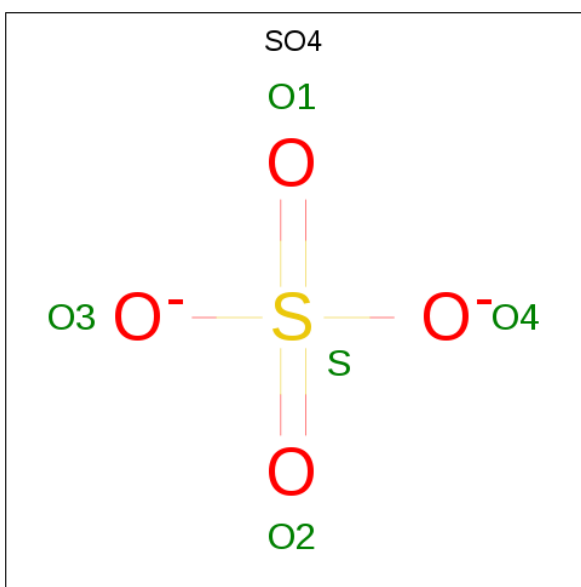


Mol	Chain	Residues	Atoms				ZeroOcc	AltConf
4	A	1	Total	C	N	O	0	0
			14	8	1	5		
4	A	1	Total	C	N	O	0	0
			14	8	1	5		
4	A	1	Total	C	N	O	0	0
			14	8	1	5		
4	A	1	Total	C	N	O	0	0
			14	8	1	5		
4	A	1	Total	C	N	O	0	0
			14	8	1	5		

- Molecule 5 is ZINC ION (three-letter code: ZN) (formula: Zn).

Mol	Chain	Residues	Atoms		ZeroOcc	AltConf
5	A	1	Total	Zn	0	0
			1	1		

- Molecule 6 is SULFATE ION (three-letter code: SO4) (formula: O₄S).



Mol	Chain	Residues	Atoms			ZeroOcc	AltConf
6	A	1	Total	O	S	0	0
			5	4	1		
6	A	1	Total	O	S	0	0
			5	4	1		
6	A	1	Total	O	S	0	0
			5	4	1		
6	A	1	Total	O	S	0	0
			5	4	1		
6	A	1	Total	O	S	0	0
			5	4	1		
6	A	1	Total	O	S	0	0
			5	4	1		
6	A	1	Total	O	S	0	0
			5	4	1		
6	A	1	Total	O	S	0	0
			5	4	1		

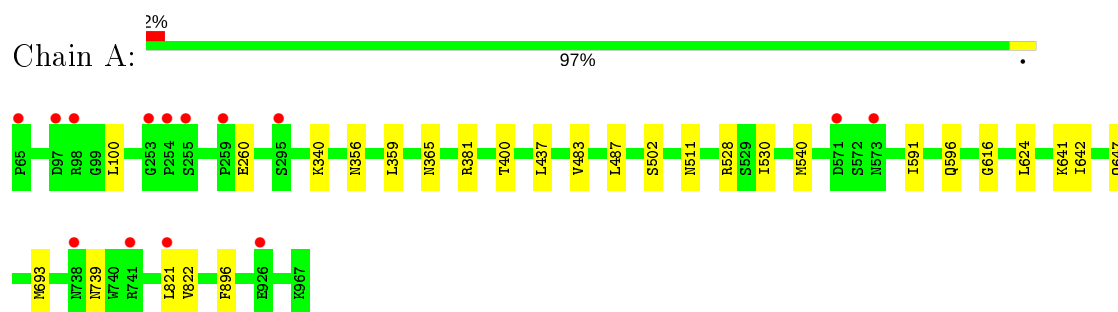
- Molecule 7 is water.

Mol	Chain	Residues	Atoms		ZeroOcc	AltConf
7	A	665	Total 665	O 665	0	0
7	B	2	Total 2	O 2	0	0

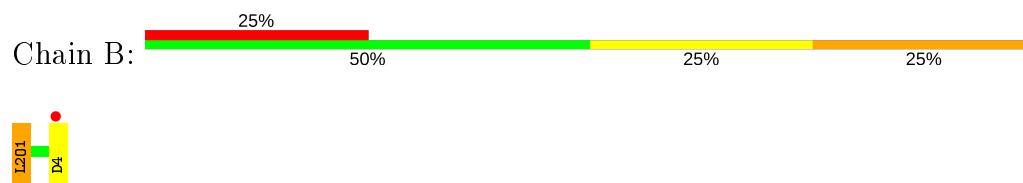
3 Residue-property plots [i](#)

These plots are drawn for all protein, RNA, DNA and oligosaccharide chains in the entry. The first graphic for a chain summarises the proportions of the various outlier classes displayed in the second graphic. The second graphic shows the sequence view annotated by issues in geometry and electron density. Residues are color-coded according to the number of geometric quality criteria for which they contain at least one outlier: green = 0, yellow = 1, orange = 2 and red = 3 or more. A red dot above a residue indicates a poor fit to the electron density ($RSRZ > 2$). Stretches of 2 or more consecutive residues without any outlier are shown as a green connector. Residues present in the sample, but not in the model, are shown in grey.

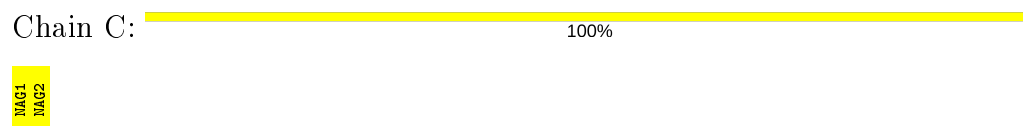
- Molecule 1: Aminopeptidase N



- Molecule 2: AMASTATIN



- Molecule 3: 2-acetamido-2-deoxy-beta-D-glucopyranose-(1-4)-2-acetamido-2-deoxy-beta-D-glucopyranose



- Molecule 3: 2-acetamido-2-deoxy-beta-D-glucopyranose-(1-4)-2-acetamido-2-deoxy-beta-D-glucopyranose



- Molecule 3: 2-acetamido-2-deoxy-beta-D-glucopyranose-(1-4)-2-acetamido-2-deoxy-beta-D-glucopyranose



MAG1
MAG2

4 Data and refinement statistics

Property	Value	Source
Space group	P 64	Depositor
Cell constants a, b, c, α , β , γ	157.47Å 157.47Å 115.13Å 90.00° 90.00° 120.00°	Depositor
Resolution (Å)	47.04 – 1.85 47.04 – 1.85	Depositor EDS
% Data completeness (in resolution range)	99.9 (47.04-1.85) 99.9 (47.04-1.85)	Depositor EDS
R_{merge}	0.10	Depositor
R_{sym}	(Not available)	Depositor
$\langle I/\sigma(I) \rangle$ ¹	6.48 (at 1.86Å)	Xtriage
Refinement program	REFMAC 5.6.0117	Depositor
R, R_{free}	0.169 , 0.183 0.169 , 0.182	Depositor DCC
R_{free} test set	6915 reflections (5.03%)	wwPDB-VP
Wilson B-factor (Å ²)	19.3	Xtriage
Anisotropy	0.004	Xtriage
Bulk solvent k_{sol} (e/Å ³), B_{sol} (Å ²)	0.39 , 41.5	EDS
L-test for twinning ²	$\langle L \rangle = 0.50$, $\langle L^2 \rangle = 0.33$	Xtriage
Estimated twinning fraction	0.022 for h,-h-k,-l	Xtriage
F_o, F_c correlation	0.96	EDS
Total number of atoms	8238	wwPDB-VP
Average B, all atoms (Å ²)	20.0	wwPDB-VP

Xtriage's analysis on translational NCS is as follows: *The largest off-origin peak in the Patterson function is 2.24% of the height of the origin peak. No significant pseudotranslation is detected.*

¹Intensities estimated from amplitudes.

²Theoretical values of $\langle |L| \rangle$, $\langle L^2 \rangle$ for acentric reflections are 0.5, 0.333 respectively for untwinned datasets, and 0.375, 0.2 for perfectly twinned datasets.

5 Model quality [i](#)

5.1 Standard geometry [i](#)

Bond lengths and bond angles in the following residue types are not validated in this section: ZN, NAG, L2O, SO4

The Z score for a bond length (or angle) is the number of standard deviations the observed value is removed from the expected value. A bond length (or angle) with $|Z| > 5$ is considered an outlier worth inspection. RMSZ is the root-mean-square of all Z scores of the bond lengths (or angles).

Mol	Chain	Bond lengths		Bond angles	
		RMSZ	# Z >5	RMSZ	# Z >5
1	A	0.53	0/7522	0.63	1/10242 (0.0%)
2	B	0.56	0/22	0.94	0/28
All	All	0.53	0/7544	0.63	1/10270 (0.0%)

There are no bond length outliers.

All (1) bond angle outliers are listed below:

Mol	Chain	Res	Type	Atoms	Z	Observed(°)	Ideal(°)
1	A	487	LEU	CA-CB-CG	5.30	127.48	115.30

There are no chirality outliers.

There are no planarity outliers.

5.2 Too-close contacts [i](#)

In the following table, the Non-H and H(model) columns list the number of non-hydrogen atoms and hydrogen atoms in the chain respectively. The H(added) column lists the number of hydrogen atoms added and optimized by MolProbity. The Clashes column lists the number of clashes within the asymmetric unit, whereas Symm-Clashes lists symmetry related clashes.

Mol	Chain	Non-H	H(model)	H(added)	Clashes	Symm-Clashes
1	A	7323	0	7093	17	0
2	B	33	0	35	2	0
3	C	28	0	25	0	0
3	D	28	0	25	1	0
3	E	28	0	25	0	0
4	A	70	0	65	1	0
5	A	1	0	0	0	0
6	A	60	0	0	0	0

Continued on next page...

Continued from previous page...

Mol	Chain	Non-H	H(model)	H(added)	Clashes	Symm-Clashes
7	A	665	0	0	2	0
7	B	2	0	0	0	0
All	All	8238	0	7268	17	0

The all-atom clashscore is defined as the number of clashes found per 1000 atoms (including hydrogen atoms). The all-atom clashscore for this structure is 1.

All (17) close contacts within the same asymmetric unit are listed below, sorted by their clash magnitude.

Atom-1	Atom-2	Interatomic distance (Å)	Clash overlap (Å)
1:A:624:LEU:HD21	3:D:1:NAG:H82	1.74	0.69
1:A:616:GLY:O	1:A:641[B]:LYS:HE3	2.10	0.51
1:A:437:LEU:HD11	1:A:693:MET:HG3	1.92	0.51
1:A:400:THR:O	1:A:511:ASN:HA	2.11	0.50
1:A:381:ARG:NH2	2:B:4:ASP:OD1	2.47	0.47
1:A:483:VAL:HG13	1:A:540:MET:CE	2.46	0.45
1:A:356:ASN:HB2	1:A:359:LEU:O	2.17	0.44
1:A:642[B]:ILE:HA	1:A:642[B]:ILE:HD13	1.82	0.44
1:A:647:GLN:HG2	7:A:1227:HOH:O	2.18	0.43
1:A:365:ASN:HB3	1:A:822:VAL:CG1	2.48	0.43
1:A:502:SER:HB2	4:A:1010:NAG:H83	2.00	0.42
1:A:365:ASN:HB3	1:A:822:VAL:HG12	2.02	0.42
1:A:483:VAL:HG13	1:A:540:MET:HE1	2.01	0.41
1:A:896:PHE:CZ	2:B:1:L2O:H10	2.56	0.41
1:A:591:ILE:HG22	1:A:596:GLN:HA	2.02	0.40
1:A:822:VAL:HG11	7:A:1755:HOH:O	2.22	0.40
1:A:528:ARG:HB2	1:A:530:ILE:HG12	2.03	0.40

There are no symmetry-related clashes.

5.3 Torsion angles [i](#)

5.3.1 Protein backbone [i](#)

In the following table, the Percentiles column shows the percent Ramachandran outliers of the chain as a percentile score with respect to all X-ray entries followed by that with respect to entries of similar resolution.

The Analysed column shows the number of residues for which the backbone conformation was analysed, and the total number of residues.

Mol	Chain	Analysed	Favoured	Allowed	Outliers	Percentiles	
1	A	906/903 (100%)	882 (97%)	24 (3%)	0	100	100
2	B	2/4 (50%)	2 (100%)	0	0	100	100
All	All	908/907 (100%)	884 (97%)	24 (3%)	0	100	100

There are no Ramachandran outliers to report.

5.3.2 Protein sidechains ⓘ

In the following table, the Percentiles column shows the percent sidechain outliers of the chain as a percentile score with respect to all X-ray entries followed by that with respect to entries of similar resolution.

The Analysed column shows the number of residues for which the sidechain conformation was analysed, and the total number of residues.

Mol	Chain	Analysed	Rotameric	Outliers	Percentiles	
1	A	806/801 (101%)	801 (99%)	5 (1%)	86	83
2	B	3/3 (100%)	3 (100%)	0	100	100
All	All	809/804 (101%)	804 (99%)	5 (1%)	86	83

All (5) residues with a non-rotameric sidechain are listed below:

Mol	Chain	Res	Type
1	A	100	LEU
1	A	260	GLU
1	A	340	LYS
1	A	739	ASN
1	A	821	LEU

Some sidechains can be flipped to improve hydrogen bonding and reduce clashes. There are no such sidechains identified.

5.3.3 RNA ⓘ

There are no RNA molecules in this entry.

5.4 Non-standard residues in protein, DNA, RNA chains ⓘ

1 non-standard protein/DNA/RNA residue is modelled in this entry.

In the following table, the Counts columns list the number of bonds (or angles) for which Mogul statistics could be retrieved, the number of bonds (or angles) that are observed in the model and the number of bonds (or angles) that are defined in the Chemical Component Dictionary. The Link column lists molecule types, if any, to which the group is linked. The Z score for a bond length (or angle) is the number of standard deviations the observed value is removed from the expected value. A bond length (or angle) with $|Z| > 2$ is considered an outlier worth inspection. RMSZ is the root-mean-square of all Z scores of the bond lengths (or angles).

Mol	Type	Chain	Res	Link	Bond lengths			Bond angles		
					Counts	RMSZ	$\# Z > 2$	Counts	RMSZ	$\# Z > 2$
2	L2O	B	1	2,5	7,9,10	0.99	1 (14%)	6,11,13	2.27	3 (50%)

In the following table, the Chirals column lists the number of chiral outliers, the number of chiral centers analysed, the number of these observed in the model and the number defined in the Chemical Component Dictionary. Similar counts are reported in the Torsion and Rings columns. '-' means no outliers of that kind were identified.

Mol	Type	Chain	Res	Link	Chirals	Torsions	Rings
2	L2O	B	1	2,5	-	5/9/10/12	-

All (1) bond length outliers are listed below:

Mol	Chain	Res	Type	Atoms	Z	Observed(Å)	Ideal(Å)
2	B	1	L2O	C2-C1	2.03	1.56	1.53

All (3) bond angle outliers are listed below:

Mol	Chain	Res	Type	Atoms	Z	Observed(°)	Ideal(°)
2	B	1	L2O	O1-C6-C1	4.06	113.75	107.31
2	B	1	L2O	O1-C6-C	-3.08	102.80	110.08
2	B	1	L2O	C3-C2-C1	-2.13	111.24	115.82

There are no chirality outliers.

All (5) torsion outliers are listed below:

Mol	Chain	Res	Type	Atoms
2	B	1	L2O	N-C1-C6-C
2	B	1	L2O	C2-C1-C6-C
2	B	1	L2O	C1-C2-C3-C4
2	B	1	L2O	C1-C2-C3-C5
2	B	1	L2O	C2-C1-C6-O1

There are no ring outliers.

1 monomer is involved in 1 short contact:

Mol	Chain	Res	Type	Clashes	Symm-Clashes
2	B	1	L2O	1	0

5.5 Carbohydrates

6 monosaccharides are modelled in this entry.

In the following table, the Counts columns list the number of bonds (or angles) for which Mogul statistics could be retrieved, the number of bonds (or angles) that are observed in the model and the number of bonds (or angles) that are defined in the Chemical Component Dictionary. The Link column lists molecule types, if any, to which the group is linked. The Z score for a bond length (or angle) is the number of standard deviations the observed value is removed from the expected value. A bond length (or angle) with $|Z| > 2$ is considered an outlier worth inspection. RMSZ is the root-mean-square of all Z scores of the bond lengths (or angles).

Mol	Type	Chain	Res	Link	Bond lengths			Bond angles		
					Counts	RMSZ	# $ Z > 2$	Counts	RMSZ	# $ Z > 2$
3	NAG	C	1	1,3	14,14,15	0.61	0	17,19,21	1.20	3 (17%)
3	NAG	C	2	3	14,14,15	0.62	0	17,19,21	1.03	1 (5%)
3	NAG	D	1	1,3	14,14,15	0.61	0	17,19,21	1.27	1 (5%)
3	NAG	D	2	3	14,14,15	0.55	0	17,19,21	0.90	0
3	NAG	E	1	1,3	14,14,15	0.44	0	17,19,21	1.24	1 (5%)
3	NAG	E	2	3	14,14,15	0.65	0	17,19,21	1.12	2 (11%)

In the following table, the Chirals column lists the number of chiral outliers, the number of chiral centers analysed, the number of these observed in the model and the number defined in the Chemical Component Dictionary. Similar counts are reported in the Torsion and Rings columns. '-' means no outliers of that kind were identified.

Mol	Type	Chain	Res	Link	Chirals	Torsions	Rings
3	NAG	C	1	1,3	-	0/6/23/26	0/1/1/1
3	NAG	C	2	3	-	0/6/23/26	0/1/1/1
3	NAG	D	1	1,3	-	0/6/23/26	0/1/1/1
3	NAG	D	2	3	-	2/6/23/26	0/1/1/1
3	NAG	E	1	1,3	-	0/6/23/26	0/1/1/1
3	NAG	E	2	3	-	0/6/23/26	0/1/1/1

There are no bond length outliers.

All (8) bond angle outliers are listed below:

Mol	Chain	Res	Type	Atoms	Z	Observed(°)	Ideal(°)
3	E	1	NAG	O5-C1-C2	-3.15	106.32	111.29
3	C	1	NAG	C1-C2-N2	2.51	114.78	110.49
3	D	1	NAG	C2-N2-C7	-2.40	119.49	122.90
3	C	1	NAG	O5-C5-C6	2.39	110.95	107.20
3	C	2	NAG	O5-C5-C6	2.12	110.53	107.20
3	C	1	NAG	O5-C1-C2	-2.11	107.95	111.29
3	E	2	NAG	O5-C5-C6	2.06	110.43	107.20
3	E	2	NAG	C1-O5-C5	2.06	114.98	112.19

There are no chirality outliers.

All (2) torsion outliers are listed below:

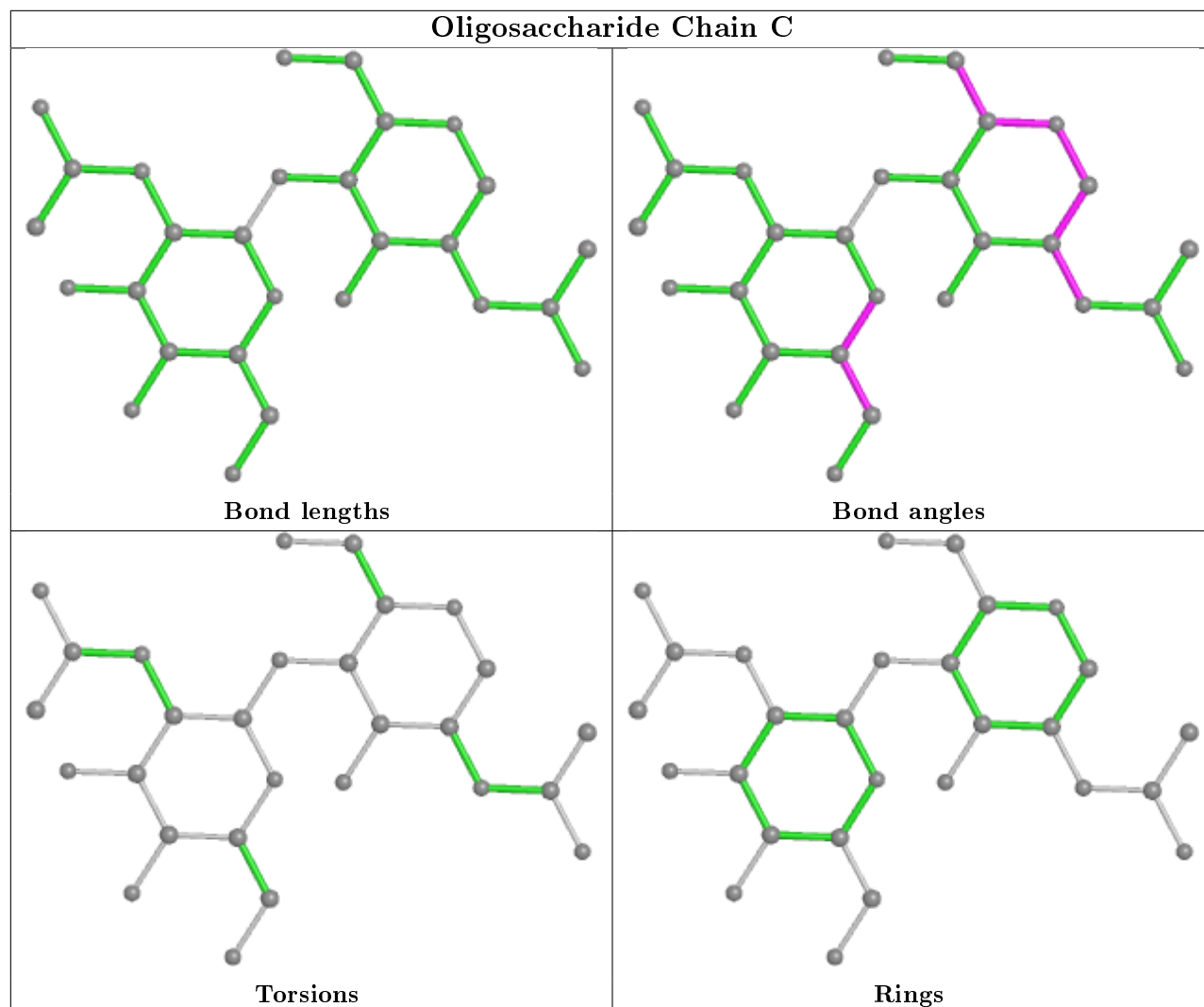
Mol	Chain	Res	Type	Atoms
3	D	2	NAG	C4-C5-C6-O6
3	D	2	NAG	O5-C5-C6-O6

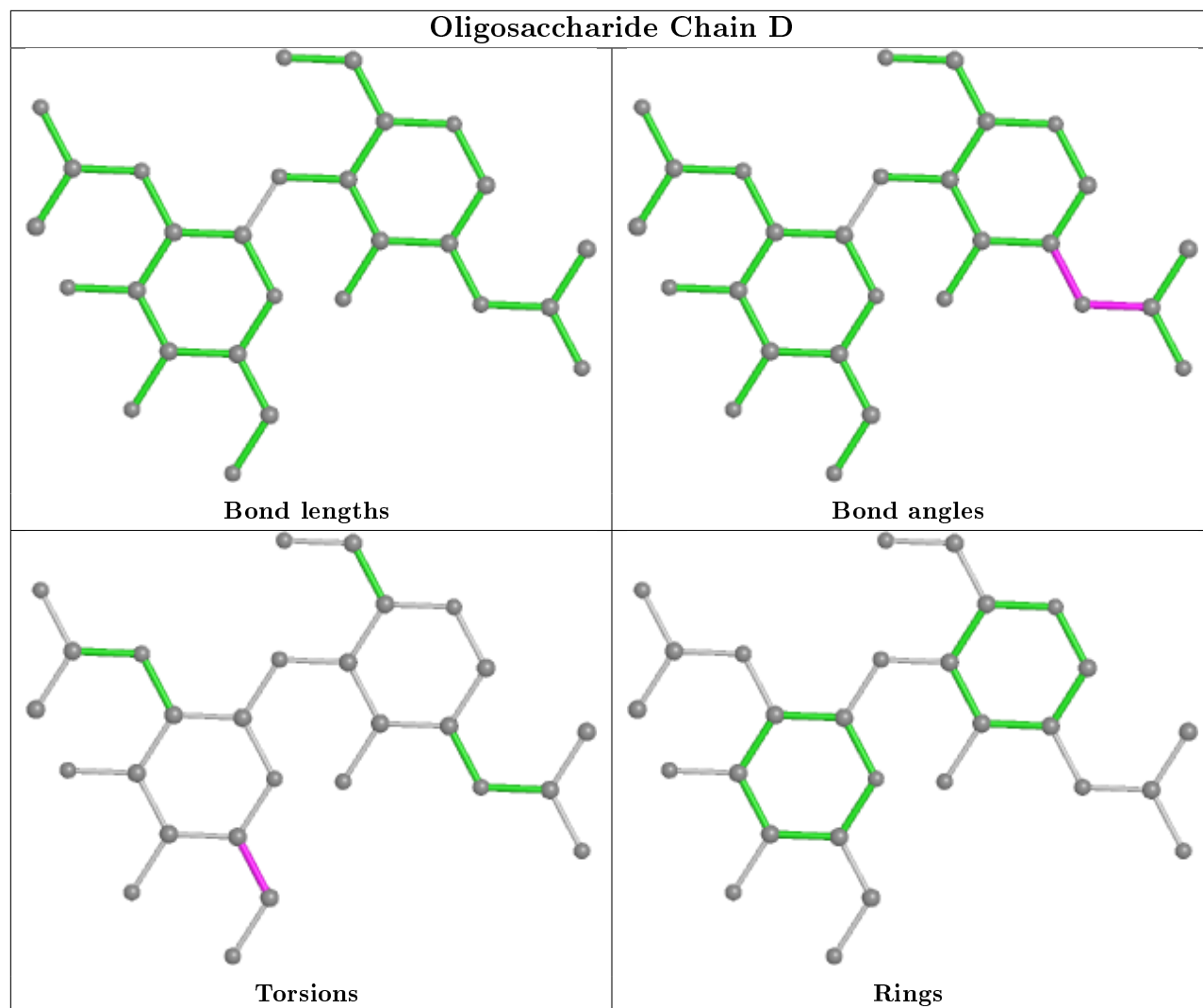
There are no ring outliers.

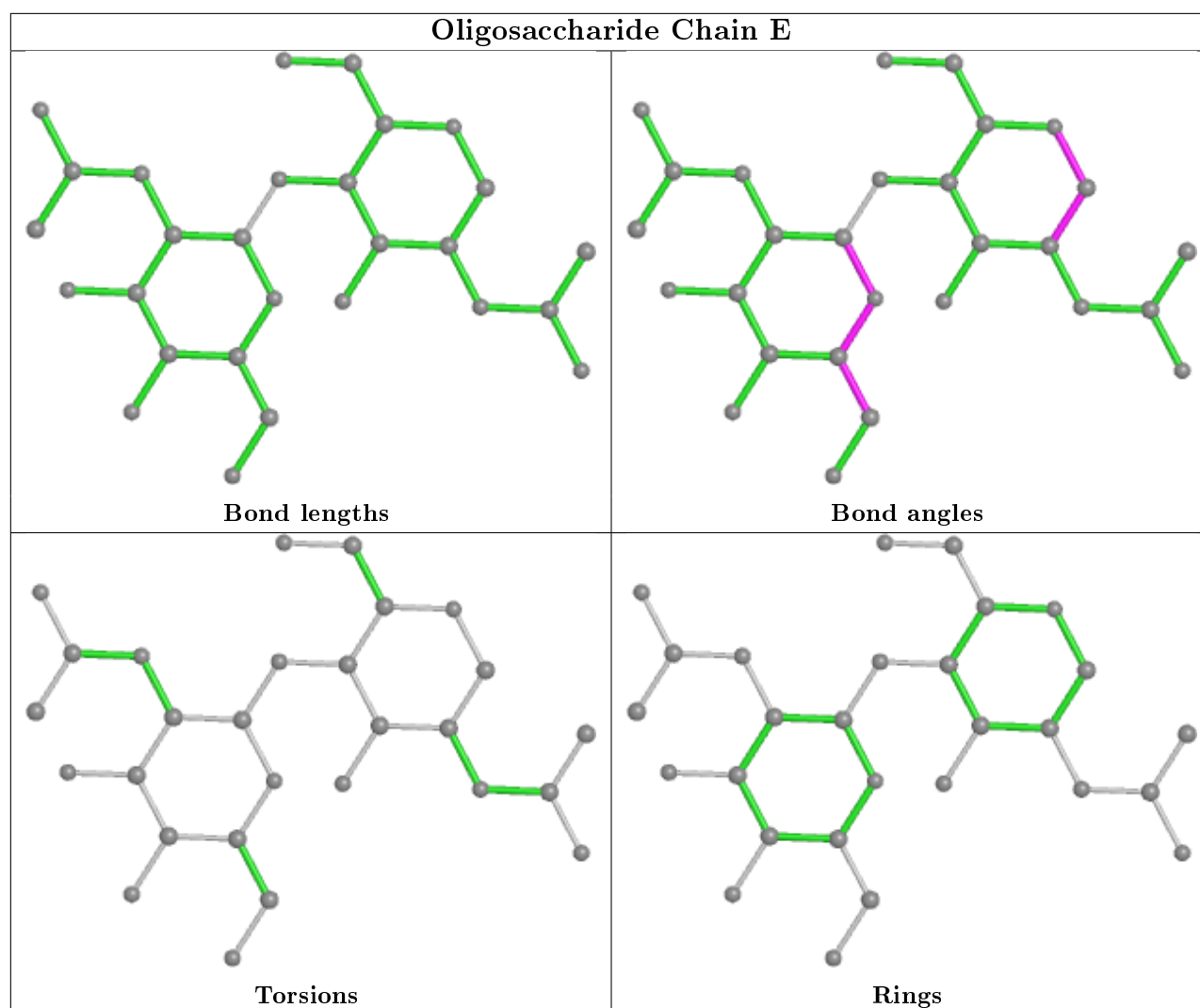
1 monomer is involved in 1 short contact:

Mol	Chain	Res	Type	Clashes	Symm-Clashes
3	D	1	NAG	1	0

The following is a two-dimensional graphical depiction of Mogul quality analysis of bond lengths, bond angles, torsion angles, and ring geometry for oligosaccharide.







5.6 Ligand geometry [i](#)

Of 18 ligands modelled in this entry, 1 is monoatomic - leaving 17 for Mogul analysis.

In the following table, the Counts columns list the number of bonds (or angles) for which Mogul statistics could be retrieved, the number of bonds (or angles) that are observed in the model and the number of bonds (or angles) that are defined in the Chemical Component Dictionary. The Link column lists molecule types, if any, to which the group is linked. The Z score for a bond length (or angle) is the number of standard deviations the observed value is removed from the expected value. A bond length (or angle) with $|Z| > 2$ is considered an outlier worth inspection. RMSZ is the root-mean-square of all Z scores of the bond lengths (or angles).

Mol	Type	Chain	Res	Link	Bond lengths			Bond angles		
					Counts	RMSZ	$\# Z > 2$	Counts	RMSZ	$\# Z > 2$
6	SO4	A	1019	-	4,4,4	0.27	0	6,6,6	0.24	0
6	SO4	A	1016	-	4,4,4	0.35	0	6,6,6	0.20	0
6	SO4	A	1021	-	4,4,4	0.34	0	6,6,6	0.11	0
6	SO4	A	1017	-	4,4,4	0.37	0	6,6,6	0.33	0

Mol	Type	Chain	Res	Link	Bond lengths			Bond angles		
					Counts	RMSZ	# Z > 2	Counts	RMSZ	# Z > 2
4	NAG	A	1011	1	14,14,15	0.64	0	17,19,21	1.37	2 (11%)
6	SO4	A	1022	-	4,4,4	0.41	0	6,6,6	0.09	0
4	NAG	A	1001	1	14,14,15	0.52	0	17,19,21	0.90	1 (5%)
6	SO4	A	1020	-	4,4,4	0.45	0	6,6,6	0.21	0
6	SO4	A	1014	-	4,4,4	0.30	0	6,6,6	0.29	0
6	SO4	A	1013	-	4,4,4	0.26	0	6,6,6	0.28	0
4	NAG	A	1005	1	14,14,15	0.55	0	17,19,21	0.86	1 (5%)
6	SO4	A	1024	-	4,4,4	0.35	0	6,6,6	0.33	0
6	SO4	A	1018	-	4,4,4	0.43	0	6,6,6	0.31	0
4	NAG	A	1004	1	14,14,15	0.55	0	17,19,21	1.63	3 (17%)
6	SO4	A	1023	-	4,4,4	0.35	0	6,6,6	0.26	0
6	SO4	A	1015	-	4,4,4	0.35	0	6,6,6	0.17	0
4	NAG	A	1010	1	14,14,15	0.46	0	17,19,21	0.94	1 (5%)

In the following table, the Chirals column lists the number of chiral outliers, the number of chiral centers analysed, the number of these observed in the model and the number defined in the Chemical Component Dictionary. Similar counts are reported in the Torsion and Rings columns. '-' means no outliers of that kind were identified.

Mol	Type	Chain	Res	Link	Chirals	Torsions	Rings
4	NAG	A	1001	1	-	0/6/23/26	0/1/1/1
4	NAG	A	1011	1	-	2/6/23/26	0/1/1/1
4	NAG	A	1005	1	-	0/6/23/26	0/1/1/1
4	NAG	A	1010	1	-	0/6/23/26	0/1/1/1
4	NAG	A	1004	1	-	0/6/23/26	0/1/1/1

There are no bond length outliers.

All (8) bond angle outliers are listed below:

Mol	Chain	Res	Type	Atoms	Z	Observed(°)	Ideal(°)
4	A	1004	NAG	C1-O5-C5	4.17	117.85	112.19
4	A	1011	NAG	O5-C5-C6	3.85	113.24	107.20
4	A	1004	NAG	C1-C2-N2	3.20	115.95	110.49
4	A	1004	NAG	C2-N2-C7	2.83	126.93	122.90
4	A	1010	NAG	C1-O5-C5	2.55	115.65	112.19
4	A	1011	NAG	C4-C3-C2	2.50	114.68	111.02
4	A	1001	NAG	C1-O5-C5	2.23	115.21	112.19
4	A	1005	NAG	C2-N2-C7	-2.05	119.99	122.90

There are no chirality outliers.

All (2) torsion outliers are listed below:

Mol	Chain	Res	Type	Atoms
4	A	1011	NAG	C4-C5-C6-O6
4	A	1011	NAG	O5-C5-C6-O6

There are no ring outliers.

1 monomer is involved in 1 short contact:

Mol	Chain	Res	Type	Clashes	Symm-Clashes
4	A	1010	NAG	1	0

5.7 Other polymers [i](#)

There are no such residues in this entry.

5.8 Polymer linkage issues [i](#)

There are no chain breaks in this entry.

6 Fit of model and data [i](#)

6.1 Protein, DNA and RNA chains [i](#)

In the following table, the column labelled ‘#RSRZ> 2’ contains the number (and percentage) of RSRZ outliers, followed by percent RSRZ outliers for the chain as percentile scores relative to all X-ray entries and entries of similar resolution. The OWAB column contains the minimum, median, 95th percentile and maximum values of the occupancy-weighted average B-factor per residue. The column labelled ‘Q< 0.9’ lists the number of (and percentage) of residues with an average occupancy less than 0.9.

Mol	Chain	Analysed	<RSRZ>	#RSRZ>2	OWAB(Å ²)	Q<0.9
1	A	903/903 (100%)	-0.43	14 (1%) 72 72	12, 18, 32, 61	0
2	B	3/4 (75%)	2.02	1 (33%) 0 0	22, 22, 31, 57	0
All	All	906/907 (99%)	-0.42	15 (1%) 70 70	12, 18, 32, 61	0

All (15) RSRZ outliers are listed below:

Mol	Chain	Res	Type	RSRZ
1	A	254	PRO	4.3
1	A	97	ASP	4.2
2	B	4	ASP	3.9
1	A	98	ARG	3.6
1	A	741	ARG	3.3
1	A	821	LEU	3.3
1	A	573	ASN	3.2
1	A	571	ASP	3.0
1	A	255	SER	2.8
1	A	259	PRO	2.6
1	A	295	SER	2.5
1	A	926	GLU	2.4
1	A	65	PRO	2.2
1	A	253	GLY	2.2
1	A	738	ASN	2.2

6.2 Non-standard residues in protein, DNA, RNA chains [i](#)

In the following table, the Atoms column lists the number of modelled atoms in the group and the number defined in the chemical component dictionary. The B-factors column lists the minimum, median, 95th percentile and maximum values of B factors of atoms in the group. The column labelled ‘Q< 0.9’ lists the number of atoms with occupancy less than 0.9.

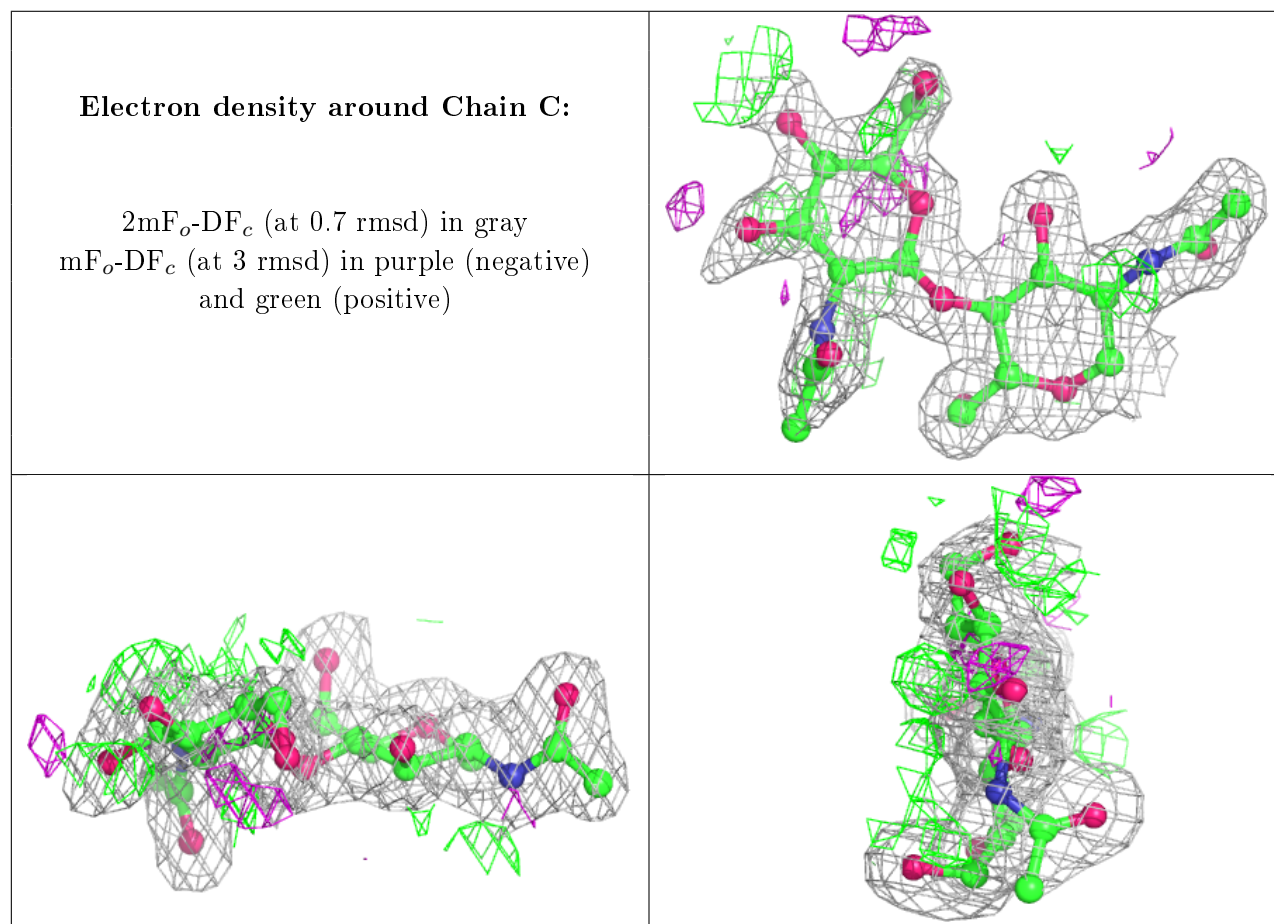
Mol	Type	Chain	Res	Atoms	RSCC	RSR	B-factors(\AA^2)	Q<0.9
2	L2O	B	1	10/11	0.97	0.13	13,16,17,18	0

6.3 Carbohydrates [i](#)

In the following table, the Atoms column lists the number of modelled atoms in the group and the number defined in the chemical component dictionary. The B-factors column lists the minimum, median, 95th percentile and maximum values of B factors of atoms in the group. The column labelled 'Q< 0.9' lists the number of atoms with occupancy less than 0.9.

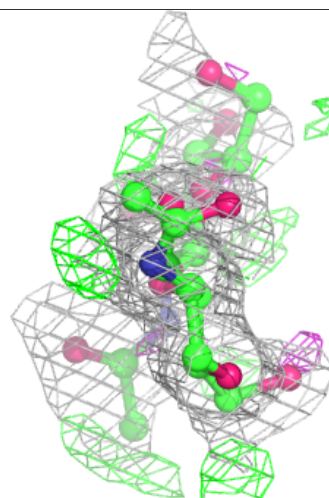
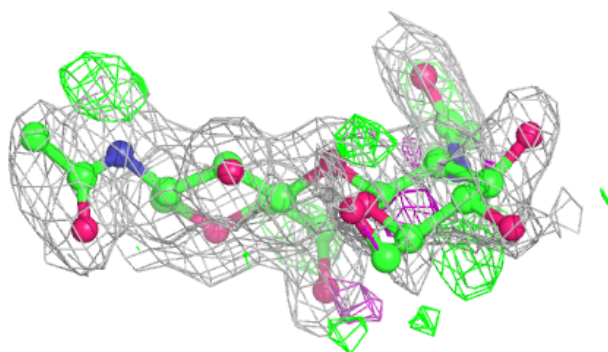
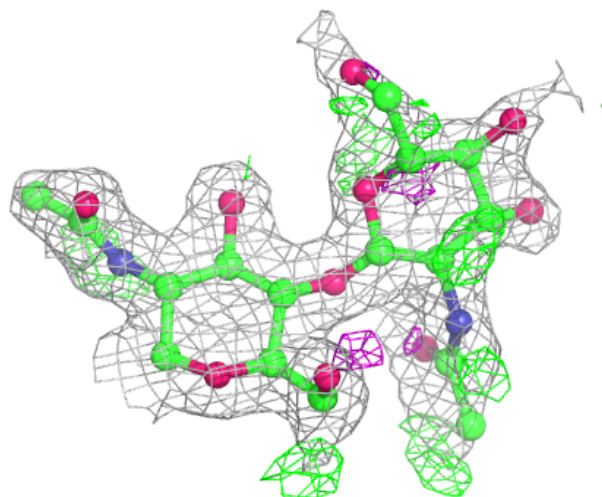
Mol	Type	Chain	Res	Atoms	RSCC	RSR	B-factors(\AA^2)	Q<0.9
3	NAG	D	2	14/15	0.75	0.24	38,44,49,50	0
3	NAG	E	2	14/15	0.81	0.28	40,44,48,50	0
3	NAG	C	2	14/15	0.81	0.25	36,42,45,46	0
3	NAG	E	1	14/15	0.93	0.11	22,28,32,37	0
3	NAG	C	1	14/15	0.94	0.09	20,22,25,31	0
3	NAG	D	1	14/15	0.94	0.09	21,25,30,33	0

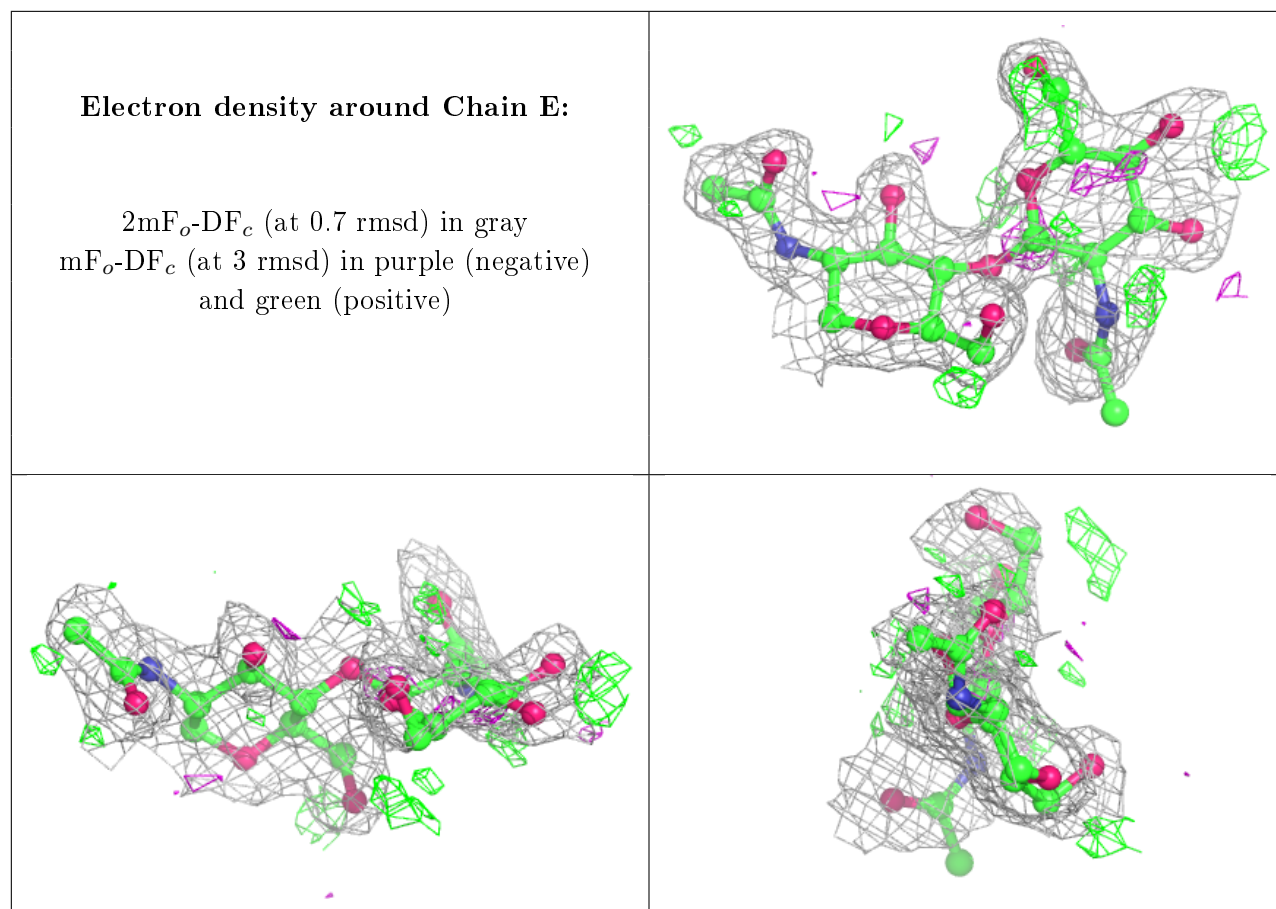
The following is a graphical depiction of the model fit to experimental electron density for oligosaccharide. Each fit is shown from different orientation to approximate a three-dimensional view.



Electron density around Chain D:

$2mF_o-DF_c$ (at 0.7 rmsd) in gray
 mF_o-DF_c (at 3 rmsd) in purple (negative)
and green (positive)





6.4 Ligands ⓘ

In the following table, the Atoms column lists the number of modelled atoms in the group and the number defined in the chemical component dictionary. The B-factors column lists the minimum, median, 95th percentile and maximum values of B factors of atoms in the group. The column labelled 'Q< 0.9' lists the number of atoms with occupancy less than 0.9.

Mol	Type	Chain	Res	Atoms	RSCC	RSR	B-factors(Å ²)	Q<0.9
4	NAG	A	1011	14/15	0.67	0.33	49,58,61,61	0
4	NAG	A	1004	14/15	0.74	0.30	45,51,53,58	0
4	NAG	A	1005	14/15	0.82	0.21	34,40,43,45	0
6	SO4	A	1020	5/5	0.87	0.20	44,45,46,48	0
4	NAG	A	1010	14/15	0.87	0.22	28,34,40,42	0
6	SO4	A	1021	5/5	0.91	0.25	54,60,61,64	0
6	SO4	A	1016	5/5	0.91	0.21	48,49,54,55	0
6	SO4	A	1022	5/5	0.92	0.21	42,42,47,48	0
4	NAG	A	1001	14/15	0.92	0.15	30,34,37,39	0
6	SO4	A	1023	5/5	0.95	0.12	40,43,45,45	0
6	SO4	A	1015	5/5	0.95	0.14	49,52,53,54	0
6	SO4	A	1024	5/5	0.95	0.10	38,38,40,41	0
6	SO4	A	1017	5/5	0.97	0.08	34,37,40,43	0

Continued on next page...

Continued from previous page...

Mol	Type	Chain	Res	Atoms	RSCC	RSR	B-factors(\AA^2)	Q<0.9
6	SO4	A	1013	5/5	0.99	0.08	27,27,30,31	0
6	SO4	A	1019	5/5	0.99	0.07	27,28,29,31	0
6	SO4	A	1014	5/5	0.99	0.15	37,38,41,41	0
6	SO4	A	1018	5/5	0.99	0.06	21,22,25,25	0
5	ZN	A	1012	1/1	1.00	0.07	13,13,13,13	0

6.5 Other polymers [i](#)

There are no such residues in this entry.