



# Full wwPDB X-ray Structure Validation Report ⓘ

May 15, 2020 – 01:11 am BST

PDB ID : 5G17  
Title : Bordetella Alcaligenes HDAH (T101A) bound to 9,9,9-trifluoro-8,8- dihydrox  
y-N-phenylnonanamide.  
Authors : Kraemer, A.; Meyer-Almes, F.J.; Yildiz, O.  
Deposited on : 2016-03-23  
Resolution : 1.51 Å(reported)

This is a Full wwPDB X-ray Structure Validation Report for a publicly released PDB entry.

We welcome your comments at [validation@mail.wwpdb.org](mailto:validation@mail.wwpdb.org)

A user guide is available at

<https://www.wwpdb.org/validation/2017/XrayValidationReportHelp>

with specific help available everywhere you see the ⓘ symbol.

---

The following versions of software and data (see [references ⓘ](#)) were used in the production of this report:

MolProbity : 4.02b-467  
Mogul : 1.8.5 (274361), CSD as541be (2020)  
Xtriage (Phenix) : 1.13  
EDS : 2.11  
buster-report : 1.1.7 (2018)  
Percentile statistics : 20191225.v01 (using entries in the PDB archive December 25th 2019)  
Refmac : 5.8.0158  
CCP4 : 7.0.044 (Gargrove)  
Ideal geometry (proteins) : Engh & Huber (2001)  
Ideal geometry (DNA, RNA) : Parkinson et al. (1996)  
Validation Pipeline (wwPDB-VP) : 2.11

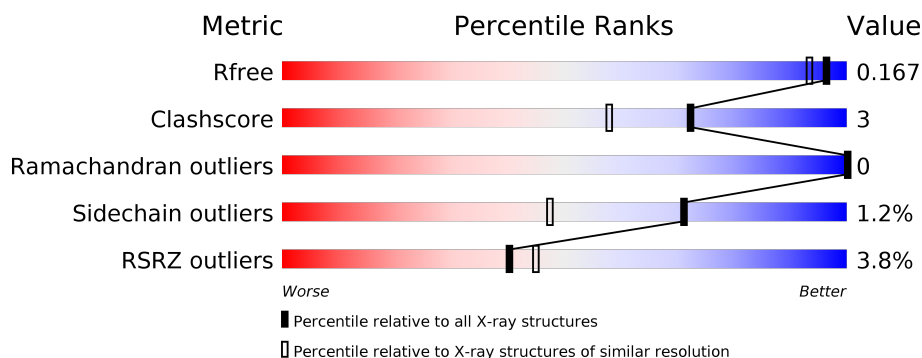
# 1 Overall quality at a glance

The following experimental techniques were used to determine the structure:

## *X-RAY DIFFRACTION*

The reported resolution of this entry is 1.51 Å.

Percentile scores (ranging between 0-100) for global validation metrics of the entry are shown in the following graphic. The table shows the number of entries on which the scores are based.



Metric	Whole archive (#Entries)	Similar resolution (#Entries, resolution range(Å))
$R_{free}$	130704	4009 (1.54-1.50)
Clashscore	141614	4249 (1.54-1.50)
Ramachandran outliers	138981	4148 (1.54-1.50)
Sidechain outliers	138945	4146 (1.54-1.50)
RSRZ outliers	127900	3943 (1.54-1.50)

The table below summarises the geometric issues observed across the polymeric chains and their fit to the electron density. The red, orange, yellow and green segments on the lower bar indicate the fraction of residues that contain outliers for  $\geq 3$ , 2, 1 and 0 types of geometric quality criteria respectively. A grey segment represents the fraction of residues that are not modelled. The numeric value for each fraction is indicated below the corresponding segment, with a dot representing fractions  $\leq 5\%$ . The upper red bar (where present) indicates the fraction of residues that have poor fit to the electron density. The numeric value is given above the bar.

Mol	Chain	Length	Quality of chain
1	A	369	<div> <div>4%</div> <div> <div></div> <div>91%</div> <div>8%</div> </div> </div>
1	B	369	<div> <div>4%</div> <div> <div></div> <div>92%</div> <div>8%</div> </div> </div>

## 2 Entry composition

There are 5 unique types of molecules in this entry. The entry contains 6505 atoms, of which 0 are hydrogens and 0 are deuteriums.

In the tables below, the ZeroOcc column contains the number of atoms modelled with zero occupancy, the AltConf column contains the number of residues with at least one atom in alternate conformation and the Trace column contains the number of residues modelled with at most 2 atoms.

- Molecule 1 is a protein called HISTONE DEACETYLASE-LIKE AMIDOHYDROLASE.

Mol	Chain	Residues	Atoms					ZeroOcc	AltConf	Trace
1	A	368	Total	C	N	O	S	0	0	0
			2757	1729	498	512	18			
1	B	369	Total	C	N	O	S	0	2	0
			2783	1744	503	517	19			

There are 6 discrepancies between the modelled and reference sequences:

Chain	Residue	Modelled	Actual	Comment	Reference
A	1	HIS	-	expression tag	UNP Q70I53
A	101	ALA	THR	conflict	UNP Q70I53
A	251	PRO	HIS	conflict	UNP Q70I53
B	1	HIS	-	expression tag	UNP Q70I53
B	101	ALA	THR	conflict	UNP Q70I53
B	251	PRO	HIS	conflict	UNP Q70I53

- Molecule 2 is ZINC ION (three-letter code: ZN) (formula: Zn).

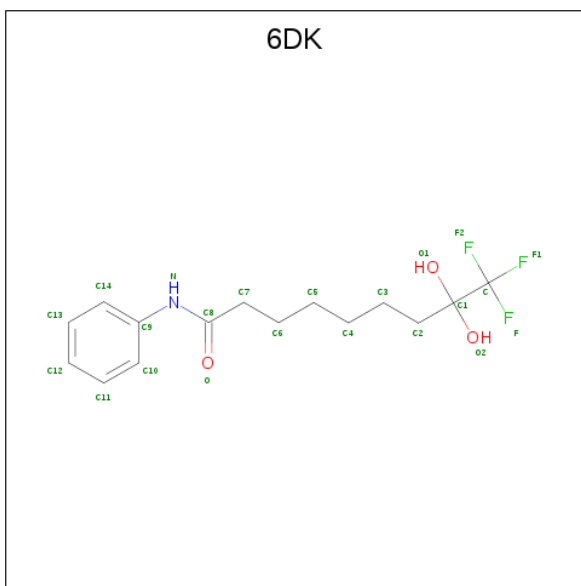
Mol	Chain	Residues	Atoms		ZeroOcc	AltConf
2	B	1	Total	Zn	0	0
			1	1		
2	A	1	Total	Zn	0	0
			1	1		

- Molecule 3 is POTASSIUM ION (three-letter code: K) (formula: K).

Mol	Chain	Residues	Atoms		ZeroOcc	AltConf
3	B	2	Total	K	0	0
			2	2		
3	A	2	Total	K	0	0
			2	2		

- Molecule 4 is 9,9,9-tris(fluoranyl)-8,8-bis(oxidanyl)- {N}-phenyl-nonanamide (three-letter

code: 6DK) (formula: C<sub>15</sub>H<sub>20</sub>F<sub>3</sub>NO<sub>3</sub>).



Mol	Chain	Residues	Atoms					ZeroOcc	AltConf
4	A	1	Total	C	F	N	O	0	0
			22	15	3	1	3		
4	B	1	Total	C	F	N	O	0	0
			22	15	3	1	3		

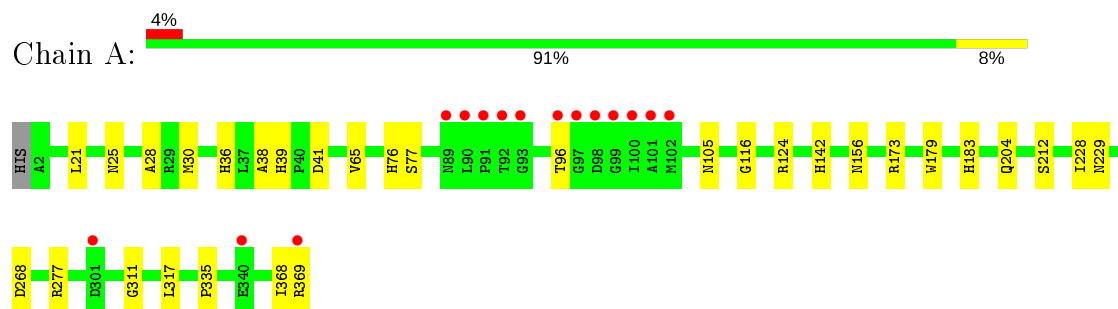
- Molecule 5 is water.

Mol	Chain	Residues	Atoms		ZeroOcc	AltConf
5	A	456	Total	O	0	0
			456	456		
5	B	459	Total	O	0	0
			459	459		

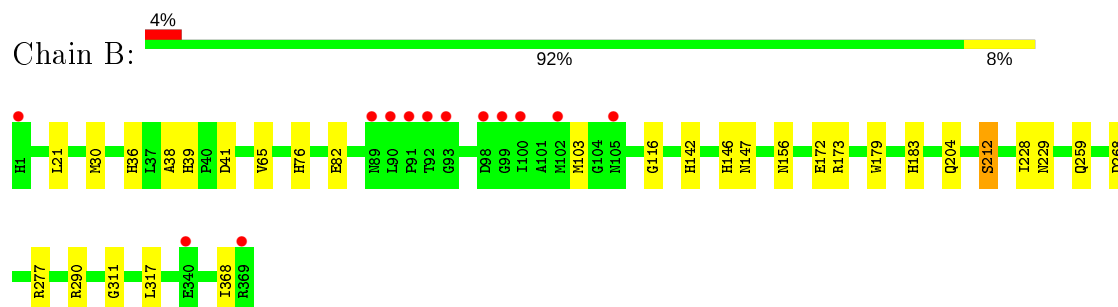
### 3 Residue-property plots [i](#)

These plots are drawn for all protein, RNA and DNA chains in the entry. The first graphic for a chain summarises the proportions of the various outlier classes displayed in the second graphic. The second graphic shows the sequence view annotated by issues in geometry and electron density. Residues are color-coded according to the number of geometric quality criteria for which they contain at least one outlier: green = 0, yellow = 1, orange = 2 and red = 3 or more. A red dot above a residue indicates a poor fit to the electron density ( $RSRZ > 2$ ). Stretches of 2 or more consecutive residues without any outlier are shown as a green connector. Residues present in the sample, but not in the model, are shown in grey.

#### • Molecule 1: HISTONE DEACETYLASE-LIKE AMIDOHYDROLASE



#### • Molecule 1: HISTONE DEACETYLASE-LIKE AMIDOHYDROLASE



## 4 Data and refinement statistics

Property	Value	Source
Space group	P 4 <sub>2</sub> 2 <sub>1</sub> 2	Depositor
Cell constants a, b, c, $\alpha$ , $\beta$ , $\gamma$	101.27Å 101.27Å 175.22Å 90.00° 90.00° 90.00°	Depositor
Resolution (Å)	87.68 – 1.51 24.54 – 1.51	Depositor EDS
% Data completeness (in resolution range)	100.0 (87.68-1.51) 100.0 (24.54-1.51)	Depositor EDS
$R_{merge}$	0.12	Depositor
$R_{sym}$	(Not available)	Depositor
$\langle I/\sigma(I) \rangle$ <sup>1</sup>	2.84 (at 1.51Å)	Xtriage
Refinement program	REFMAC 5.8.0103	Depositor
R, $R_{free}$	0.130 , 0.158 0.144 , 0.167	Depositor DCC
$R_{free}$ test set	7093 reflections (4.98%)	wwPDB-VP
Wilson B-factor (Å <sup>2</sup> )	12.5	Xtriage
Anisotropy	0.236	Xtriage
Bulk solvent $k_{sol}$ (e/Å <sup>3</sup> ), $B_{sol}$ (Å <sup>2</sup> )	0.36 , 43.2	EDS
L-test for twinning <sup>2</sup>	$\langle  L  \rangle = 0.49$ , $\langle L^2 \rangle = 0.32$	Xtriage
Estimated twinning fraction	No twinning to report.	Xtriage
$F_o, F_c$ correlation	0.97	EDS
Total number of atoms	6505	wwPDB-VP
Average B, all atoms (Å <sup>2</sup> )	17.0	wwPDB-VP

Xtriage's analysis on translational NCS is as follows: *The analyses of the Patterson function reveals a significant off-origin peak that is 49.39 % of the origin peak, indicating pseudo-translational symmetry. The chance of finding a peak of this or larger height randomly in a structure without pseudo-translational symmetry is equal to 7.5078e-05. The detected translational NCS is most likely also responsible for the elevated intensity ratio.*

<sup>1</sup> Intensities estimated from amplitudes.

<sup>2</sup> Theoretical values of  $\langle |L| \rangle$ ,  $\langle L^2 \rangle$  for acentric reflections are 0.5, 0.333 respectively for untwinned datasets, and 0.375, 0.2 for perfectly twinned datasets.

## 5 Model quality [i](#)

### 5.1 Standard geometry [i](#)

Bond lengths and bond angles in the following residue types are not validated in this section: K, 6DK, ZN

The Z score for a bond length (or angle) is the number of standard deviations the observed value is removed from the expected value. A bond length (or angle) with  $|Z| > 5$  is considered an outlier worth inspection. RMSZ is the root-mean-square of all Z scores of the bond lengths (or angles).

Mol	Chain	Bond lengths		Bond angles	
		RMSZ	$\# Z  > 5$	RMSZ	$\# Z  > 5$
1	A	0.53	0/2825	0.76	4/3851 (0.1%)
1	B	0.55	1/2852 (0.0%)	0.78	6/3887 (0.2%)
All	All	0.54	1/5677 (0.0%)	0.77	10/7738 (0.1%)

All (1) bond length outliers are listed below:

Mol	Chain	Res	Type	Atoms	Z	Observed(Å)	Ideal(Å)
1	B	212	SER	CB-OG	-7.70	1.32	1.42

All (10) bond angle outliers are listed below:

Mol	Chain	Res	Type	Atoms	Z	Observed(°)	Ideal(°)
1	B	212	SER	N-CA-CB	-7.81	98.78	110.50
1	B	103	MET	CG-SD-CE	6.01	109.82	100.20
1	A	268	ASP	CB-CG-OD2	-5.92	112.97	118.30
1	B	268	ASP	CB-CG-OD2	-5.84	113.05	118.30
1	A	124	ARG	NE-CZ-NH1	5.59	123.09	120.30
1	B	173	ARG	NE-CZ-NH1	5.56	123.08	120.30
1	A	173	ARG	NE-CZ-NH1	5.46	123.03	120.30
1	A	30	MET	CG-SD-CE	-5.38	91.59	100.20
1	B	30	MET	CG-SD-CE	-5.26	91.79	100.20
1	B	290	ARG	NE-CZ-NH1	5.09	122.85	120.30

There are no chirality outliers.

There are no planarity outliers.

## 5.2 Too-close contacts ⓘ

In the following table, the Non-H and H(model) columns list the number of non-hydrogen atoms and hydrogen atoms in the chain respectively. The H(added) column lists the number of hydrogen atoms added and optimized by MolProbity. The Clashes column lists the number of clashes within the asymmetric unit, whereas Symm-Clashes lists symmetry related clashes.

Mol	Chain	Non-H	H(model)	H(added)	Clashes	Symm-Clashes
1	A	2757	0	2673	18	0
1	B	2783	0	2694	19	0
2	A	1	0	0	0	0
2	B	1	0	0	0	0
3	A	2	0	0	0	0
3	B	2	0	0	0	0
4	A	22	0	0	0	0
4	B	22	0	0	0	0
5	A	456	0	0	2	6
5	B	459	0	0	3	5
All	All	6505	0	5367	37	7

The all-atom clashscore is defined as the number of clashes found per 1000 atoms (including hydrogen atoms). The all-atom clashscore for this structure is 3.

All (37) close contacts within the same asymmetric unit are listed below, sorted by their clash magnitude.

Atom-1	Atom-2	Interatomic distance (Å)	Clash overlap (Å)
1:A:76:HIS:HE1	1:A:156:ASN:H	1.22	0.85
1:A:36:HIS:HD2	1:A:38:ALA:H	1.26	0.83
1:A:204:GLN:HE22	1:A:277:ARG:H	1.24	0.82
1:B:76:HIS:HE1	1:B:156:ASN:H	1.24	0.82
1:B:204:GLN:HE22	1:B:277:ARG:H	1.25	0.82
1:B:36:HIS:HD2	1:B:38:ALA:H	1.28	0.81
1:A:228:ILE:HD11	1:A:368:ILE:HD11	1.63	0.80
1:B:228:ILE:HD11	1:B:368:ILE:HD11	1.64	0.77
1:A:39:HIS:HD2	1:A:41:ASP:H	1.32	0.75
1:B:39:HIS:HD2	1:B:41:ASP:H	1.33	0.73
1:B:76:HIS:CE1	1:B:156:ASN:H	2.06	0.73
1:A:76:HIS:CE1	1:A:156:ASN:H	2.05	0.73
1:A:36:HIS:CD2	1:A:38:ALA:H	2.09	0.71
1:B:36:HIS:CD2	1:B:38:ALA:H	2.09	0.70
1:B:172:GLU:H	1:B:259:GLN:HE22	1.43	0.67
1:A:25:ASN:HD22	1:A:28:ALA:H	1.46	0.61
1:A:39:HIS:CD2	1:A:41:ASP:H	2.17	0.60

*Continued on next page...*



Continued from previous page...

Atom-1	Atom-2	Interatomic distance (Å)	Clash overlap (Å)
1:B:183:HIS:HD2	1:B:212:SER:OG	1.88	0.57
1:B:39:HIS:CD2	1:B:41:ASP:H	2.18	0.56
1:A:183:HIS:HD2	1:A:212:SER:OG	1.91	0.53
1:A:204:GLN:NE2	1:A:277:ARG:H	2.01	0.52
1:B:204:GLN:NE2	1:B:277:ARG:H	2.01	0.51
1:A:77:SER:HA	5:A:2170:HOH:O	2.12	0.50
1:B:82:GLU:HG2	5:B:2174:HOH:O	2.12	0.49
1:A:21:LEU:O	1:A:36:HIS:HE1	1.96	0.48
1:B:21:LEU:O	1:B:36:HIS:HE1	1.97	0.48
1:B:146:HIS:HD2	5:B:2272:HOH:O	1.97	0.47
1:B:183:HIS:HE1	1:B:229:ASN:HD21	1.65	0.45
1:B:65:VAL:O	1:B:116:GLY:HA3	2.16	0.45
1:A:65:VAL:O	1:A:116:GLY:HA3	2.16	0.45
1:A:311:GLY:HA3	1:A:317:LEU:HD12	1.99	0.45
1:B:311:GLY:HA3	1:B:317:LEU:HD12	1.99	0.45
1:A:96:THR:HG23	5:A:2203:HOH:O	2.18	0.42
1:B:147:ASN:HB2	5:B:2272:HOH:O	2.20	0.41
1:A:36:HIS:HD2	1:A:38:ALA:N	2.07	0.41
1:A:183:HIS:HE1	1:A:229:ASN:HD21	1.69	0.40
1:B:36:HIS:HD2	1:B:38:ALA:N	2.07	0.40

All (7) symmetry-related close contacts are listed below. The label for Atom-2 includes the symmetry operator and encoded unit-cell translations to be applied.

Atom-1	Atom-2	Interatomic distance (Å)	Clash overlap (Å)
5:A:2170:HOH:O	5:B:2283:HOH:O[5_555]	1.04	1.16
5:A:2084:HOH:O	5:B:2103:HOH:O[2_565]	1.53	0.67
5:B:2252:HOH:O	5:B:2252:HOH:O[2_565]	1.66	0.54
5:A:2256:HOH:O	5:A:2256:HOH:O[2_565]	1.73	0.47
5:A:2071:HOH:O	5:B:2285:HOH:O[5_555]	1.82	0.38
5:A:2281:HOH:O	5:B:2269:HOH:O[6_555]	2.15	0.05
5:A:2083:HOH:O	5:A:2098:HOH:O[2_565]	2.19	0.01

## 5.3 Torsion angles [i](#)

### 5.3.1 Protein backbone [i](#)

In the following table, the Percentiles column shows the percent Ramachandran outliers of the chain as a percentile score with respect to all X-ray entries followed by that with respect to entries of similar resolution.

The Analysed column shows the number of residues for which the backbone conformation was analysed, and the total number of residues.

Mol	Chain	Analysed	Favoured	Allowed	Outliers	Percentiles	
1	A	366/369 (99%)	357 (98%)	9 (2%)	0	100	100
1	B	369/369 (100%)	359 (97%)	10 (3%)	0	100	100
All	All	735/738 (100%)	716 (97%)	19 (3%)	0	100	100

There are no Ramachandran outliers to report.

### 5.3.2 Protein sidechains ⓘ

In the following table, the Percentiles column shows the percent sidechain outliers of the chain as a percentile score with respect to all X-ray entries followed by that with respect to entries of similar resolution.

The Analysed column shows the number of residues for which the sidechain conformation was analysed, and the total number of residues.

Mol	Chain	Analysed	Rotameric	Outliers	Percentiles	
1	A	280/281 (100%)	275 (98%)	5 (2%)	59	29
1	B	283/281 (101%)	281 (99%)	2 (1%)	84	69
All	All	563/562 (100%)	556 (99%)	7 (1%)	71	47

All (7) residues with a non-rotameric sidechain are listed below:

Mol	Chain	Res	Type
1	A	105	ASN
1	A	142	HIS
1	A	179	TRP
1	A	335	PRO
1	A	369	ARG
1	B	142	HIS
1	B	179	TRP

Some sidechains can be flipped to improve hydrogen bonding and reduce clashes. All (21) such sidechains are listed below:

Mol	Chain	Res	Type
1	A	25	ASN
1	A	31	GLN
1	A	36	HIS

*Continued on next page...*

*Continued from previous page...*

Mol	Chain	Res	Type
1	A	39	HIS
1	A	76	HIS
1	A	89	ASN
1	A	183	HIS
1	A	204	GLN
1	A	222	ASN
1	A	229	ASN
1	A	308	GLN
1	B	31	GLN
1	B	36	HIS
1	B	39	HIS
1	B	76	HIS
1	B	183	HIS
1	B	204	GLN
1	B	222	ASN
1	B	229	ASN
1	B	259	GLN
1	B	308	GLN

### 5.3.3 RNA [i](#)

There are no RNA molecules in this entry.

## 5.4 Non-standard residues in protein, DNA, RNA chains [i](#)

There are no non-standard protein/DNA/RNA residues in this entry.

## 5.5 Carbohydrates [i](#)

There are no carbohydrates in this entry.

## 5.6 Ligand geometry [i](#)

Of 8 ligands modelled in this entry, 6 are monoatomic - leaving 2 for Mogul analysis.

In the following table, the Counts columns list the number of bonds (or angles) for which Mogul statistics could be retrieved, the number of bonds (or angles) that are observed in the model and the number of bonds (or angles) that are defined in the Chemical Component Dictionary. The Link column lists molecule types, if any, to which the group is linked. The Z score for a bond length (or angle) is the number of standard deviations the observed value is removed from the

expected value. A bond length (or angle) with  $|Z| > 2$  is considered an outlier worth inspection. RMSZ is the root-mean-square of all Z scores of the bond lengths (or angles).

Mol	Type	Chain	Res	Link	Bond lengths			Bond angles		
					Counts	RMSZ	$\# Z  > 2$	Counts	RMSZ	$\# Z  > 2$
4	6DK	B	373	2	22,22,22	0.88	1 (4%)	26,30,30	1.53	5 (19%)
4	6DK	A	373	2	22,22,22	1.03	1 (4%)	26,30,30	1.45	4 (15%)

In the following table, the Chirals column lists the number of chiral outliers, the number of chiral centers analysed, the number of these observed in the model and the number defined in the Chemical Component Dictionary. Similar counts are reported in the Torsion and Rings columns. '-' means no outliers of that kind were identified.

Mol	Type	Chain	Res	Link	Chirals	Torsions	Rings
4	6DK	B	373	2	-	0/23/23/23	0/1/1/1
4	6DK	A	373	2	-	0/23/23/23	0/1/1/1

All (2) bond length outliers are listed below:

Mol	Chain	Res	Type	Atoms	Z	Observed(Å)	Ideal(Å)
4	A	373	6DK	O2-C1	3.34	1.44	1.40
4	B	373	6DK	C2-C1	2.08	1.55	1.52

All (9) bond angle outliers are listed below:

Mol	Chain	Res	Type	Atoms	Z	Observed(°)	Ideal(°)
4	B	373	6DK	O2-C1-O1	-3.68	98.50	110.51
4	A	373	6DK	F-C-C1	-3.36	109.38	111.80
4	A	373	6DK	O2-C1-O1	-3.20	100.05	110.51
4	B	373	6DK	F1-C-C1	-2.90	109.71	111.80
4	B	373	6DK	F2-C-C1	-2.53	109.98	111.80
4	B	373	6DK	C2-C3-C4	-2.51	105.71	113.19
4	A	373	6DK	C2-C3-C4	-2.50	105.73	113.19
4	A	373	6DK	O2-C1-C	2.34	111.57	107.14
4	B	373	6DK	O1-C1-C	2.03	110.98	107.14

There are no chirality outliers.

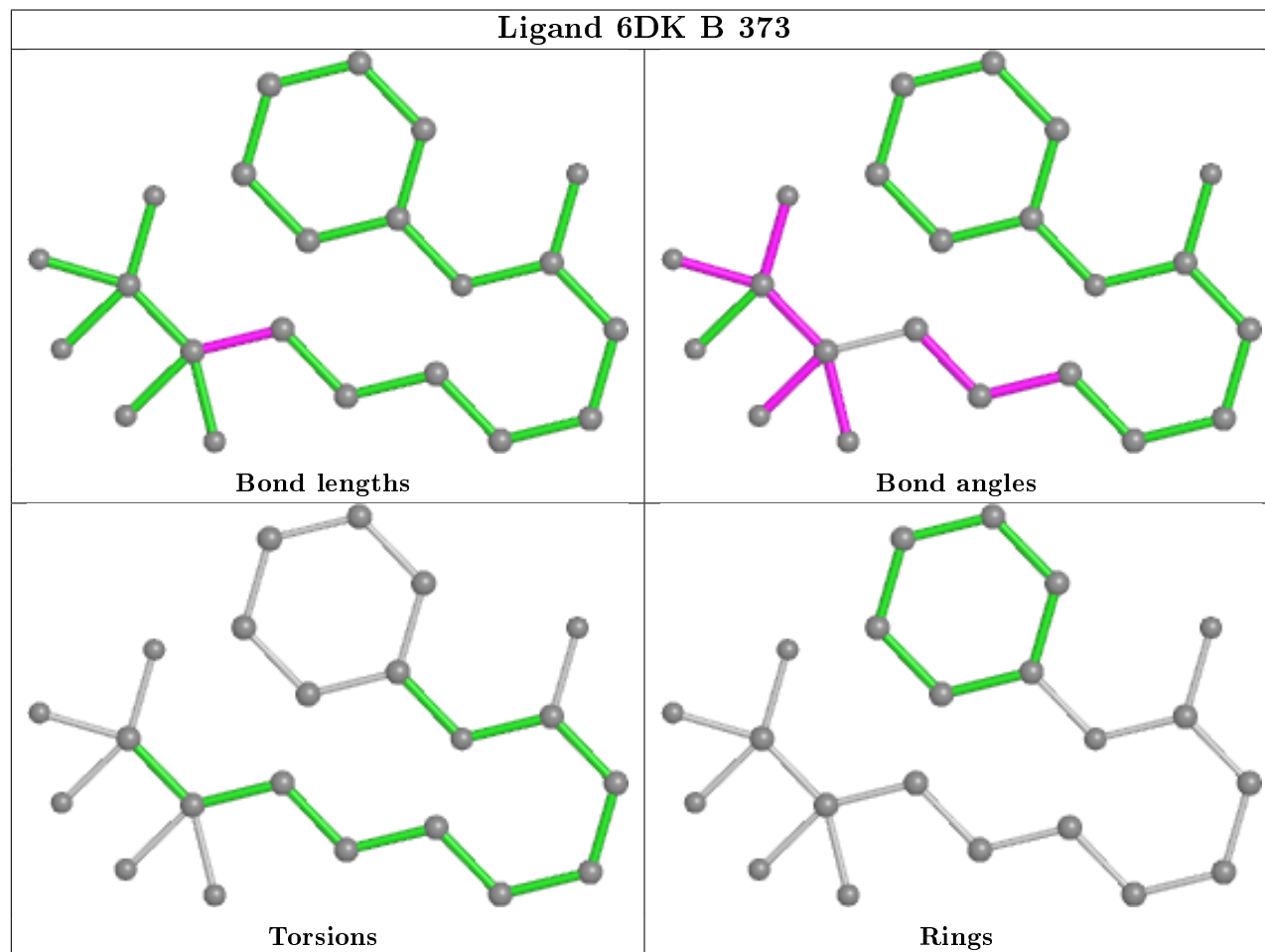
There are no torsion outliers.

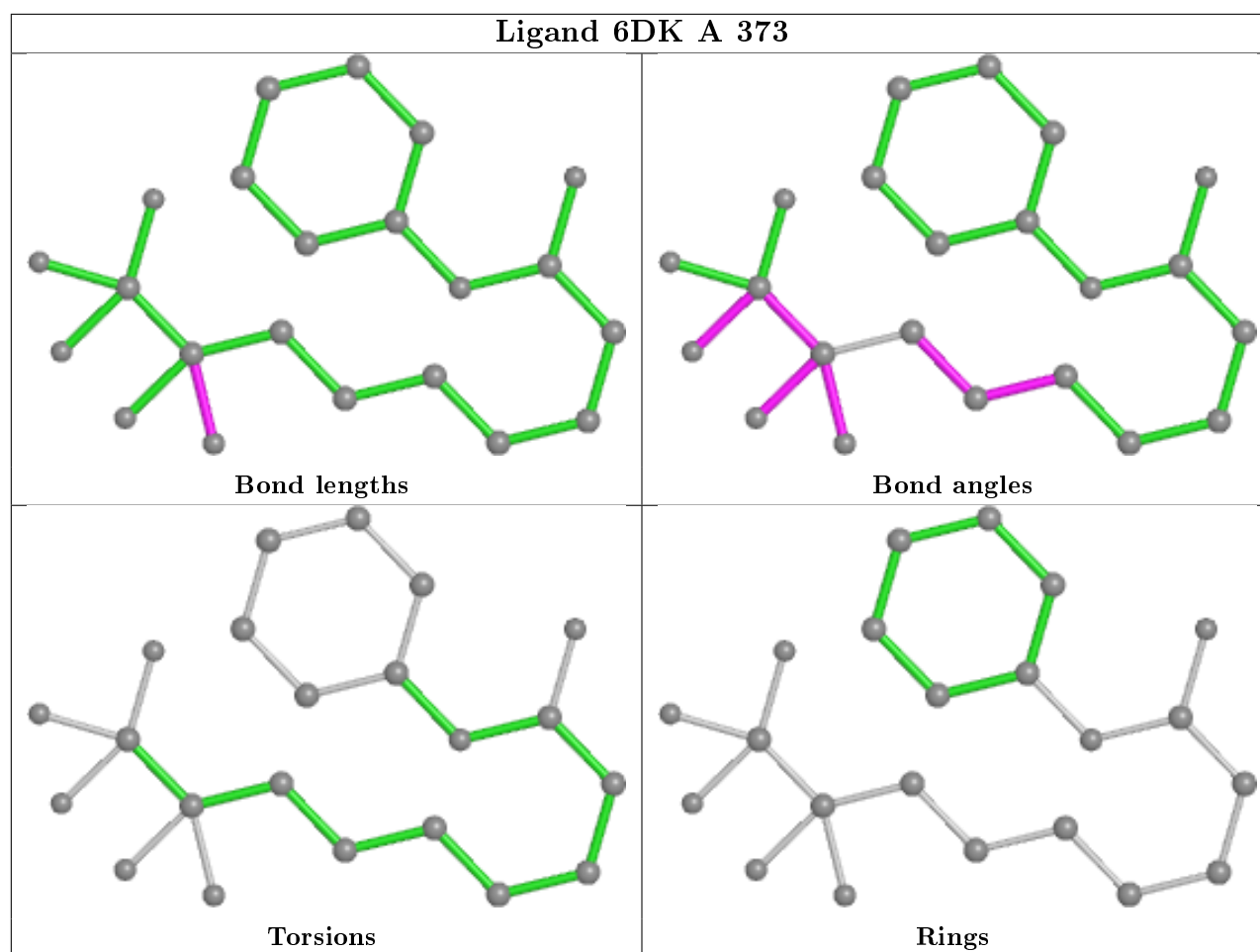
There are no ring outliers.

No monomer is involved in short contacts.

The following is a two-dimensional graphical depiction of Mogul quality analysis of bond lengths, bond angles, torsion angles, and ring geometry for all instances of the Ligand of Interest. In

addition, ligands with molecular weight > 250 and outliers as shown on the validation Tables will also be included. For torsion angles, if less than 5% of the Mogul distribution of torsion angles is within 10 degrees of the torsion angle in question, then that torsion angle is considered an outlier. Any bond that is central to one or more torsion angles identified as an outlier by Mogul will be highlighted in the graph. For rings, the root-mean-square deviation (RMSD) between the ring in question and similar rings identified by Mogul is calculated over all ring torsion angles. If the average RMSD is greater than 60 degrees and the minimal RMSD between the ring in question and any Mogul-identified rings is also greater than 60 degrees, then that ring is considered an outlier. The outliers are highlighted in purple. The color gray indicates Mogul did not find sufficient equivalents in the CSD to analyse the geometry.





## 5.7 Other polymers [i](#)

There are no such residues in this entry.

## 5.8 Polymer linkage issues [i](#)

There are no chain breaks in this entry.

## 6 Fit of model and data ⓘ

### 6.1 Protein, DNA and RNA chains ⓘ

In the following table, the column labelled ‘#RSRZ> 2’ contains the number (and percentage) of RSRZ outliers, followed by percent RSRZ outliers for the chain as percentile scores relative to all X-ray entries and entries of similar resolution. The OWAB column contains the minimum, median, 95<sup>th</sup> percentile and maximum values of the occupancy-weighted average B-factor per residue. The column labelled ‘Q< 0.9’ lists the number of (and percentage) of residues with an average occupancy less than 0.9.

Mol	Chain	Analysed	<RSRZ>	#RSRZ>2			OWAB(Å <sup>2</sup> )	Q<0.9
1	A	368/369 (99%)	-0.08	15 (4%)	37	41	7, 13, 28, 66	0
1	B	369/369 (100%)	-0.11	13 (3%)	44	48	7, 13, 28, 58	0
All	All	737/738 (99%)	-0.10	28 (3%)	40	45	7, 13, 29, 66	0

All (28) RSRZ outliers are listed below:

Mol	Chain	Res	Type	RSRZ
1	A	91	PRO	5.4
1	B	92	THR	5.2
1	A	92	THR	4.9
1	B	100	ILE	3.9
1	A	369	ARG	3.6
1	A	101	ALA	3.4
1	B	90	LEU	3.4
1	B	1	HIS	3.3
1	B	91	PRO	3.3
1	B	99	GLY	3.2
1	A	102	MET	3.1
1	B	89	ASN	3.1
1	A	96	THR	3.1
1	B	369	ARG	3.0
1	A	98	ASP	3.0
1	B	105	ASN	2.8
1	B	93	GLY	2.8
1	B	102[A]	MET	2.7
1	A	340	GLU	2.7
1	A	93	GLY	2.6
1	A	99	GLY	2.6
1	A	89	ASN	2.4
1	B	340	GLU	2.4
1	B	98	ASP	2.4

*Continued on next page...*

*Continued from previous page...*

Mol	Chain	Res	Type	RSRZ
1	A	301	ASP	2.3
1	A	100	ILE	2.3
1	A	90	LEU	2.1
1	A	97	GLY	2.0

## 6.2 Non-standard residues in protein, DNA, RNA chains [i](#)

There are no non-standard protein/DNA/RNA residues in this entry.

## 6.3 Carbohydrates [i](#)

There are no carbohydrates in this entry.

## 6.4 Ligands [i](#)

In the following table, the Atoms column lists the number of modelled atoms in the group and the number defined in the chemical component dictionary. The B-factors column lists the minimum, median, 95<sup>th</sup> percentile and maximum values of B factors of atoms in the group. The column labelled 'Q< 0.9' lists the number of atoms with occupancy less than 0.9.

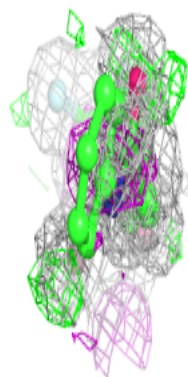
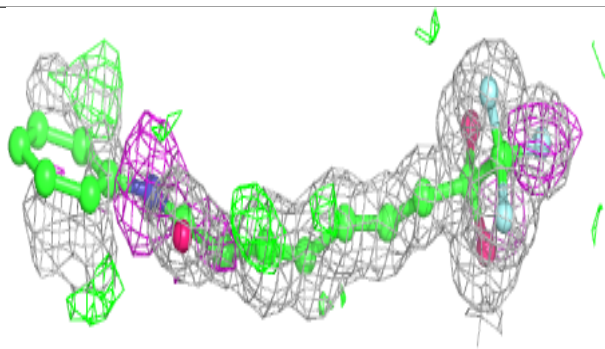
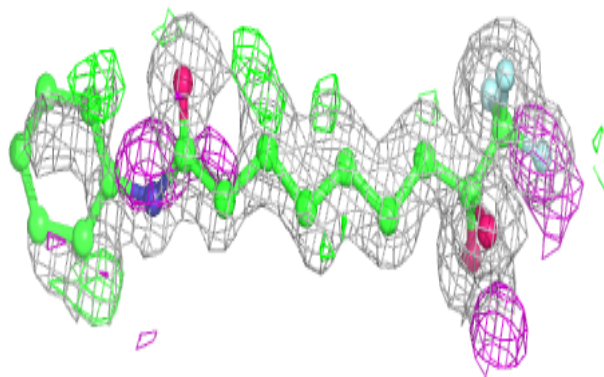
Mol	Type	Chain	Res	Atoms	RSCC	RSR	B-factors( $\text{\AA}^2$ )	Q<0.9
4	6DK	A	373	22/22	0.94	0.15	9,23,61,67	0
4	6DK	B	373	22/22	0.95	0.15	9,21,47,52	0
3	K	B	371	1/1	1.00	0.04	10,10,10,10	0
2	ZN	A	370	1/1	1.00	0.05	8,8,8,8	1
3	K	B	372	1/1	1.00	0.10	10,10,10,10	1
3	K	A	372	1/1	1.00	0.03	16,16,16,16	0
2	ZN	B	370	1/1	1.00	0.03	8,8,8,8	1
3	K	A	371	1/1	1.00	0.04	10,10,10,10	0

The following is a graphical depiction of the model fit to experimental electron density of all instances of the Ligand of Interest. In addition, ligands with molecular weight > 250 and outliers as shown on the geometry validation Tables will also be included. Each fit is shown from different orientation to approximate a three-dimensional view.

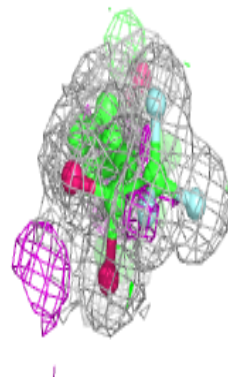
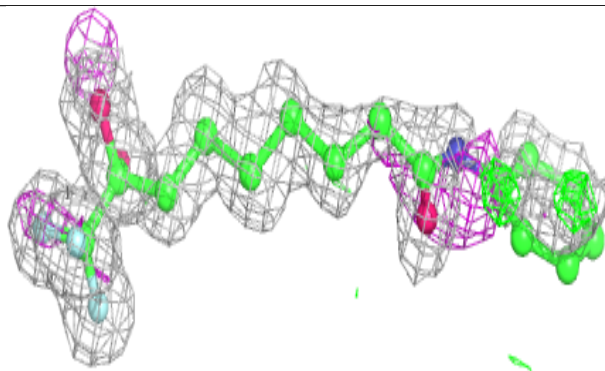
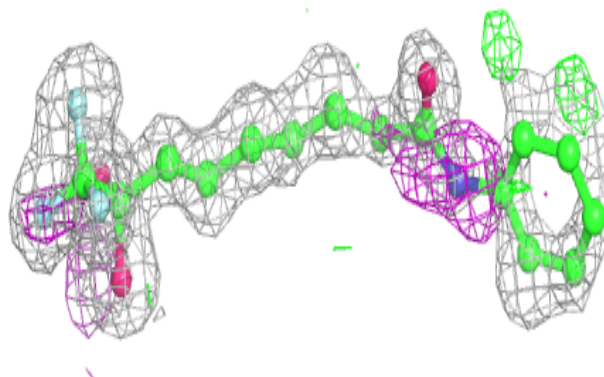


**Electron density around 6DK A 373:**

$2mF_o-DF_c$  (at 0.7 rmsd) in gray  
 $mF_o-DF_c$  (at 3 rmsd) in purple (negative)  
and green (positive)

**Electron density around 6DK B 373:**

$2mF_o-DF_c$  (at 0.7 rmsd) in gray  
 $mF_o-DF_c$  (at 3 rmsd) in purple (negative)  
and green (positive)



## 6.5 Other polymers

There are no such residues in this entry.