



# wwPDB X-ray Structure Validation Summary Report ⓘ

Aug 9, 2020 – 02:56 AM BST

PDB ID : 6G1V  
Title : Crystal structure of Torpedo Californica acetylcholinesterase in complex with 12-Amino-3-chloro-6,7,10,11-tetrahydro-5,9-dimethyl-7,11-methanocycloocta[b]quinolin-5-ium  
Authors : Coquelle, N.; Colletier, J.P.  
Deposited on : 2018-03-22  
Resolution : 1.82 Å(reported)

This is a wwPDB X-ray Structure Validation Summary Report for a publicly released PDB entry.

We welcome your comments at [validation@mail.wwpdb.org](mailto:validation@mail.wwpdb.org)

A user guide is available at

<https://www.wwpdb.org/validation/2017/XrayValidationReportHelp>

with specific help available everywhere you see the ⓘ symbol.

---

The following versions of software and data (see [references ⓘ](#)) were used in the production of this report:

MolProbity : 4.02b-467  
Mogul : 1.8.5 (274361), CSD as541be (2020)  
Xtriage (Phenix) : 1.13  
EDS : 2.13.1  
buster-report : 1.1.7 (2018)  
Percentile statistics : 20191225.v01 (using entries in the PDB archive December 25th 2019)  
Refmac : 5.8.0158  
CCP4 : 7.0.044 (Gargrove)  
Ideal geometry (proteins) : Engh & Huber (2001)  
Ideal geometry (DNA, RNA) : Parkinson et al. (1996)  
Validation Pipeline (wwPDB-VP) : 2.13.1

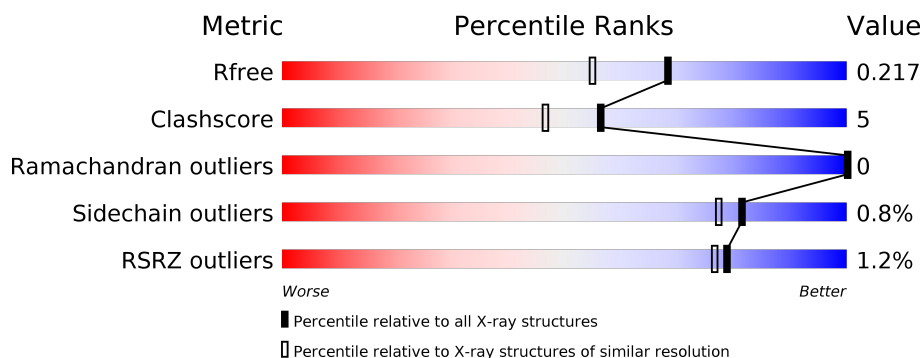
# 1 Overall quality at a glance

The following experimental techniques were used to determine the structure:

## *X-RAY DIFFRACTION*

The reported resolution of this entry is 1.82 Å.

Percentile scores (ranging between 0-100) for global validation metrics of the entry are shown in the following graphic. The table shows the number of entries on which the scores are based.



Metric	Whole archive (#Entries)	Similar resolution (#Entries, resolution range(Å))
$R_{free}$	130704	7484 (1.84-1.80)
Clashscore	141614	8401 (1.84-1.80)
Ramachandran outliers	138981	8290 (1.84-1.80)
Sidechain outliers	138945	8290 (1.84-1.80)
RSRZ outliers	127900	7371 (1.84-1.80)

The table below summarises the geometric issues observed across the polymeric chains and their fit to the electron density. The red, orange, yellow and green segments on the lower bar indicate the fraction of residues that contain outliers for  $\geq 3$ , 2, 1 and 0 types of geometric quality criteria respectively. A grey segment represents the fraction of residues that are not modelled. The numeric value for each fraction is indicated below the corresponding segment, with a dot representing fractions  $\leq 5\%$ . The upper red bar (where present) indicates the fraction of residues that have poor fit to the electron density. The numeric value is given above the bar.

Mol	Chain	Length	Quality of chain
1	A	565	<div> <div></div> <div> <div></div> <div>85%</div> <div>9%</div> <div>6%</div> </div> </div>
1	B	565	<div> <div></div> <div> <div></div> <div>86%</div> <div>8%</div> <div>6%</div> </div> </div>

The following table lists non-polymeric compounds, carbohydrate monomers and non-standard residues in protein, DNA, RNA chains that are outliers for geometric or electron-density-fit criteria:

Mol	Type	Chain	Res	Chirality	Geometry	Clashes	Electron density
5	PEG	A	609	-	-	X	-

## 2 Entry composition [i](#)

There are 6 unique types of molecules in this entry. The entry contains 9847 atoms, of which 0 are hydrogens and 0 are deuteriums.

In the tables below, the ZeroOcc column contains the number of atoms modelled with zero occupancy, the AltConf column contains the number of residues with at least one atom in alternate conformation and the Trace column contains the number of residues modelled with at most 2 atoms.

- Molecule 1 is a protein called Acetylcholinesterase.

Mol	Chain	Residues	Atoms					ZeroOcc	AltConf	Trace
1	A	532	Total	C	N	O	S	0	8	0
			4291	2754	731	784	22			
1	B	532	Total	C	N	O	S	0	8	0
			4292	2753	732	785	22			

- Molecule 2 is 2-acetamido-2-deoxy-beta-D-glucopyranose (three-letter code: NAG) (formula:  $C_8H_{15}NO_6$ ).



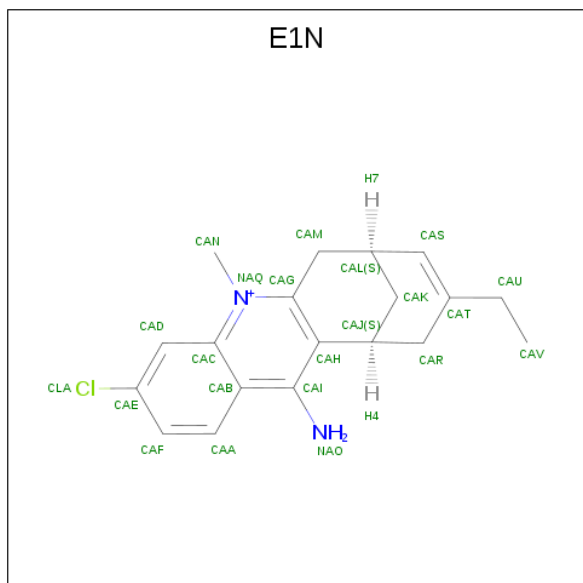
Mol	Chain	Residues	Atoms				ZeroOcc	AltConf
2	A	1	Total	C	N	O	0	0
			14	8	1	5		
2	A	1	Total	C	N	O	0	0
			14	8	1	5		
2	A	1	Total	C	N	O	0	0
			14	8	1	5		
2	B	1	Total	C	N	O	0	0
			14	8	1	5		

*Continued on next page...*

Continued from previous page...

Mol	Chain	Residues	Atoms				ZeroOcc	AltConf
2	B	1	Total	C	N	O	0	0
			14	8	1	5		
2	B	1	Total	C	N	O	0	0
			14	8	1	5		

- Molecule 3 is 12-Amino-3-chloro-6,7,10,11-tetrahydro-5,9-dimethyl-7,11-methanocycloocta[b]quinolin-5-ium (three-letter code: E1N) (formula: C<sub>19</sub>H<sub>22</sub>ClN<sub>2</sub>).

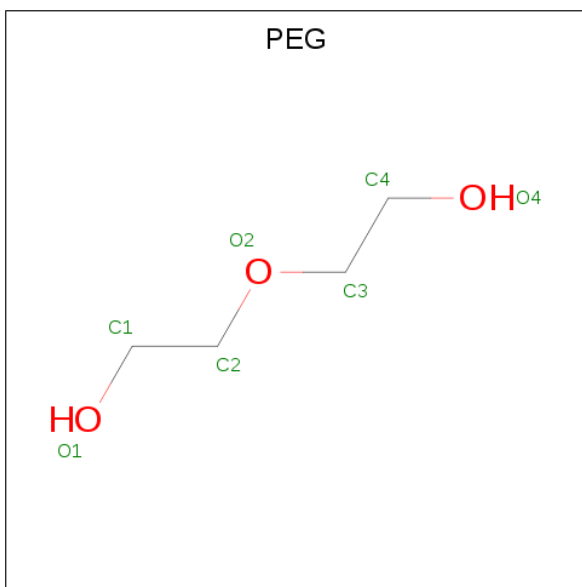


Mol	Chain	Residues	Atoms				ZeroOcc	AltConf
3	A	1	Total	C	Cl	N	0	0
			22	19	1	2		
3	B	1	Total	C	Cl	N	0	0
			22	19	1	2		

- Molecule 4 is CHLORIDE ION (three-letter code: CL) (formula: Cl).

Mol	Chain	Residues	Atoms	ZeroOcc	AltConf
4	B	1	Total Cl	0	0
			1 1		
4	A	3	Total Cl	0	0
			3 3		

- Molecule 5 is DI(HYDROXYETHYL)ETHER (three-letter code: PEG) (formula: C<sub>4</sub>H<sub>10</sub>O<sub>3</sub>).



Mol	Chain	Residues	Atoms			ZeroOcc	AltConf
5	A	1	Total	C	O	0	0
			7	4	3		
5	A	1	Total	C	O	0	0
			7	4	3		
5	B	1	Total	C	O	0	0
			7	4	3		

- Molecule 6 is water.

Mol	Chain	Residues	Atoms		ZeroOcc	AltConf
6	A	556	Total	O	0	0
			556	556		
6	B	555	Total	O	0	0
			555	555		



## 4 Data and refinement statistics

Property	Value	Source
Space group	P 21 21 21	Depositor
Cell constants a, b, c, $\alpha$ , $\beta$ , $\gamma$	91.74Å 106.44Å 150.68Å 90.00° 90.00° 90.00°	Depositor
Resolution (Å)	46.03 – 1.82 46.03 – 1.82	Depositor EDS
% Data completeness (in resolution range)	99.3 (46.03-1.82) 88.7 (46.03-1.82)	Depositor EDS
$R_{merge}$	0.07	Depositor
$R_{sym}$	(Not available)	Depositor
$\langle I/\sigma(I) \rangle$ <sup>1</sup>	1.46 (at 1.82Å)	Xtriage
Refinement program	PHENIX (1.11.1 _2575: ???)	Depositor
R, $R_{free}$	0.188 , 0.217 0.188 , 0.217	Depositor DCC
$R_{free}$ test set	6565 reflections (4.99%)	wwPDB-VP
Wilson B-factor (Å <sup>2</sup> )	22.2	Xtriage
Anisotropy	0.775	Xtriage
Bulk solvent $k_{sol}$ (e/Å <sup>3</sup> ), $B_{sol}$ (Å <sup>2</sup> )	0.33 , 40.2	EDS
L-test for twinning <sup>2</sup>	$\langle  L  \rangle = 0.47$ , $\langle L^2 \rangle = 0.30$	Xtriage
Estimated twinning fraction	No twinning to report.	Xtriage
$F_o, F_c$ correlation	0.96	EDS
Total number of atoms	9847	wwPDB-VP
Average B, all atoms (Å <sup>2</sup> )	32.0	wwPDB-VP

Xtriage's analysis on translational NCS is as follows: *The analyses of the Patterson function reveals a significant off-origin peak that is 41.17 % of the origin peak, indicating pseudo-translational symmetry. The chance of finding a peak of this or larger height randomly in a structure without pseudo-translational symmetry is equal to 2.4552e-04. The detected translational NCS is most likely also responsible for the elevated intensity ratio.*

<sup>1</sup>Intensities estimated from amplitudes.

<sup>2</sup>Theoretical values of  $\langle |L| \rangle$ ,  $\langle L^2 \rangle$  for acentric reflections are 0.5, 0.333 respectively for untwinned datasets, and 0.375, 0.2 for perfectly twinned datasets.



## 5 Model quality [i](#)

### 5.1 Standard geometry [i](#)

Bond lengths and bond angles in the following residue types are not validated in this section: CL, PEG, NAG, E1N

The Z score for a bond length (or angle) is the number of standard deviations the observed value is removed from the expected value. A bond length (or angle) with  $|Z| > 5$  is considered an outlier worth inspection. RMSZ is the root-mean-square of all Z scores of the bond lengths (or angles).

Mol	Chain	Bond lengths		Bond angles	
		RMSZ	# Z  >5	RMSZ	# Z  >5
1	A	0.37	0/4438	0.54	1/6024 (0.0%)
1	B	0.36	0/4439	0.53	0/6025
All	All	0.37	0/8877	0.53	1/12049 (0.0%)

There are no bond length outliers.

All (1) bond angle outliers are listed below:

Mol	Chain	Res	Type	Atoms	Z	Observed(°)	Ideal(°)
1	A	175	MET	CG-SD-CE	-5.29	91.74	100.20

There are no chirality outliers.

There are no planarity outliers.

### 5.2 Too-close contacts [i](#)

In the following table, the Non-H and H(model) columns list the number of non-hydrogen atoms and hydrogen atoms in the chain respectively. The H(added) column lists the number of hydrogen atoms added and optimized by MolProbity. The Clashes column lists the number of clashes within the asymmetric unit, whereas Symm-Clashes lists symmetry related clashes.

Mol	Chain	Non-H	H(model)	H(added)	Clashes	Symm-Clashes
1	A	4291	0	4163	41	0
1	B	4292	0	4160	38	0
2	A	42	0	39	1	0
2	B	42	0	39	1	0
3	A	22	0	0	1	0
3	B	22	0	0	1	0
4	A	3	0	0	2	0
4	B	1	0	0	0	0

*Continued on next page...*

*Continued from previous page...*

Mol	Chain	Non-H	H(model)	H(added)	Clashes	Symm-Clashes
5	A	14	0	20	5	0
5	B	7	0	10	1	0
6	A	556	0	0	20	1
6	B	555	0	0	11	1
All	All	9847	0	8431	85	1

The all-atom clashscore is defined as the number of clashes found per 1000 atoms (including hydrogen atoms). The all-atom clashscore for this structure is 5.

The worst 5 of 85 close contacts within the same asymmetric unit are listed below, sorted by their clash magnitude.

Atom-1	Atom-2	Interatomic distance (Å)	Clash overlap (Å)
4:A:607:CL:CL	6:A:1137:HOH:O	2.30	0.87
1:A:409:ASN:HB3	6:A:1127:HOH:O	1.75	0.86
1:A:107:LYS:O	6:A:703:HOH:O	1.98	0.81
1:A:341:LYS:NZ	6:A:706:HOH:O	2.09	0.81
1:A:526:GLN:NE2	6:A:701:HOH:O	1.92	0.80

All (1) symmetry-related close contacts are listed below. The label for Atom-2 includes the symmetry operator and encoded unit-cell translations to be applied.

Atom-1	Atom-2	Interatomic distance (Å)	Clash overlap (Å)
6:A:903:HOH:O	6:B:890:HOH:O[4_445]	2.03	0.17

## 5.3 Torsion angles ⓘ

### 5.3.1 Protein backbone ⓘ

In the following table, the Percentiles column shows the percent Ramachandran outliers of the chain as a percentile score with respect to all X-ray entries followed by that with respect to entries of similar resolution.

The Analysed column shows the number of residues for which the backbone conformation was analysed, and the total number of residues.

Mol	Chain	Analysed	Favoured	Allowed	Outliers	Percentiles	
1	A	538/565 (95%)	517 (96%)	21 (4%)	0	100	100
1	B	538/565 (95%)	517 (96%)	21 (4%)	0	100	100

*Continued on next page...*

*Continued from previous page...*

Mol	Chain	Analysed	Favoured	Allowed	Outliers	Percentiles	
All	All	1076/1130 (95%)	1034 (96%)	42 (4%)	0	100	100

There are no Ramachandran outliers to report.

### 5.3.2 Protein sidechains ⓘ

In the following table, the Percentiles column shows the percent sidechain outliers of the chain as a percentile score with respect to all X-ray entries followed by that with respect to entries of similar resolution.

The Analysed column shows the number of residues for which the sidechain conformation was analysed, and the total number of residues.

Mol	Chain	Analysed	Rotameric	Outliers	Percentiles	
1	A	471/494 (95%)	468 (99%)	3 (1%)	86	83
1	B	471/494 (95%)	467 (99%)	4 (1%)	81	77
All	All	942/988 (95%)	935 (99%)	7 (1%)	81	80

5 of 7 residues with a non-rotameric sidechain are listed below:

Mol	Chain	Res	Type
1	B	197	PHE
1	B	473	TRP
1	B	288	PHE
1	A	288	PHE
1	B	330	PHE

Some sidechains can be flipped to improve hydrogen bonding and reduce clashes. All (3) such sidechains are listed below:

Mol	Chain	Res	Type
1	A	159	HIS
1	A	374	GLN
1	B	526	GLN

### 5.3.3 RNA ⓘ

There are no RNA molecules in this entry.

## 5.4 Non-standard residues in protein, DNA, RNA chains [i](#)

There are no non-standard protein/DNA/RNA residues in this entry.

## 5.5 Carbohydrates [i](#)

There are no monosaccharides in this entry.

## 5.6 Ligand geometry [i](#)

Of 15 ligands modelled in this entry, 4 are monoatomic - leaving 11 for Mogul analysis.

In the following table, the Counts columns list the number of bonds (or angles) for which Mogul statistics could be retrieved, the number of bonds (or angles) that are observed in the model and the number of bonds (or angles) that are defined in the Chemical Component Dictionary. The Link column lists molecule types, if any, to which the group is linked. The Z score for a bond length (or angle) is the number of standard deviations the observed value is removed from the expected value. A bond length (or angle) with  $|Z| > 2$  is considered an outlier worth inspection. RMSZ is the root-mean-square of all Z scores of the bond lengths (or angles).

Mol	Type	Chain	Res	Link	Bond lengths			Bond angles		
					Counts	RMSZ	# $ Z  > 2$	Counts	RMSZ	# $ Z  > 2$
2	NAG	A	602	1	14,14,15	0.33	0	17,19,21	0.46	0
3	E1N	B	604	-	24,25,25	2.54	8 (33%)	25,38,38	1.56	3 (12%)
2	NAG	B	603	1	14,14,15	0.23	0	17,19,21	0.43	0
5	PEG	B	606	-	6,6,6	0.49	0	5,5,5	0.35	0
2	NAG	B	602	1	14,14,15	0.32	0	17,19,21	0.44	0
2	NAG	A	603	1	14,14,15	0.52	0	17,19,21	0.53	0
5	PEG	A	608	-	6,6,6	0.48	0	5,5,5	0.30	0
2	NAG	B	601	1	14,14,15	0.33	0	17,19,21	0.38	0
2	NAG	A	601	1	14,14,15	0.23	0	17,19,21	0.70	1 (5%)
3	E1N	A	604	-	24,25,25	2.59	8 (33%)	25,38,38	1.57	3 (12%)
5	PEG	A	609	-	6,6,6	0.49	0	5,5,5	0.39	0

In the following table, the Chirals column lists the number of chiral outliers, the number of chiral centers analysed, the number of these observed in the model and the number defined in the Chemical Component Dictionary. Similar counts are reported in the Torsion and Rings columns. '-' means no outliers of that kind were identified.

Mol	Type	Chain	Res	Link	Chirals	Torsions	Rings
2	NAG	A	602	1	-	0/6/23/26	0/1/1/1
3	E1N	B	604	-	-	1/2/22/22	0/5/4/4
2	NAG	B	603	1	-	2/6/23/26	0/1/1/1

*Continued on next page...*

*Continued from previous page...*

Mol	Type	Chain	Res	Link	Chirals	Torsions	Rings
5	PEG	B	606	-	-	3/4/4/4	-
2	NAG	B	602	1	-	0/6/23/26	0/1/1/1
2	NAG	A	603	1	-	0/6/23/26	0/1/1/1
5	PEG	A	608	-	-	1/4/4/4	-
2	NAG	B	601	1	-	0/6/23/26	0/1/1/1
2	NAG	A	601	1	-	4/6/23/26	0/1/1/1
3	E1N	A	604	-	-	2/2/22/22	0/5/4/4
5	PEG	A	609	-	-	4/4/4/4	-

The worst 5 of 16 bond length outliers are listed below:

Mol	Chain	Res	Type	Atoms	Z	Observed(Å)	Ideal(Å)
3	A	604	E1N	CAH-CAJ	-7.16	1.40	1.51
3	B	604	E1N	CAH-CAJ	-7.05	1.40	1.51
3	A	604	E1N	CAC-NAQ	-5.47	1.34	1.40
3	B	604	E1N	CAC-NAQ	-4.68	1.35	1.40
3	A	604	E1N	CAL-CAS	-4.37	1.39	1.51

The worst 5 of 7 bond angle outliers are listed below:

Mol	Chain	Res	Type	Atoms	Z	Observed(°)	Ideal(°)
3	A	604	E1N	CAR-CAJ-CAH	-4.49	106.63	111.33
3	B	604	E1N	CAR-CAJ-CAH	-4.36	106.77	111.33
3	A	604	E1N	CAM-CAG-CAH	3.50	124.43	117.96
3	B	604	E1N	CAM-CAG-CAH	3.04	123.58	117.96
3	A	604	E1N	CAN-NAQ-CAG	-2.21	117.36	119.19

There are no chirality outliers.

5 of 17 torsion outliers are listed below:

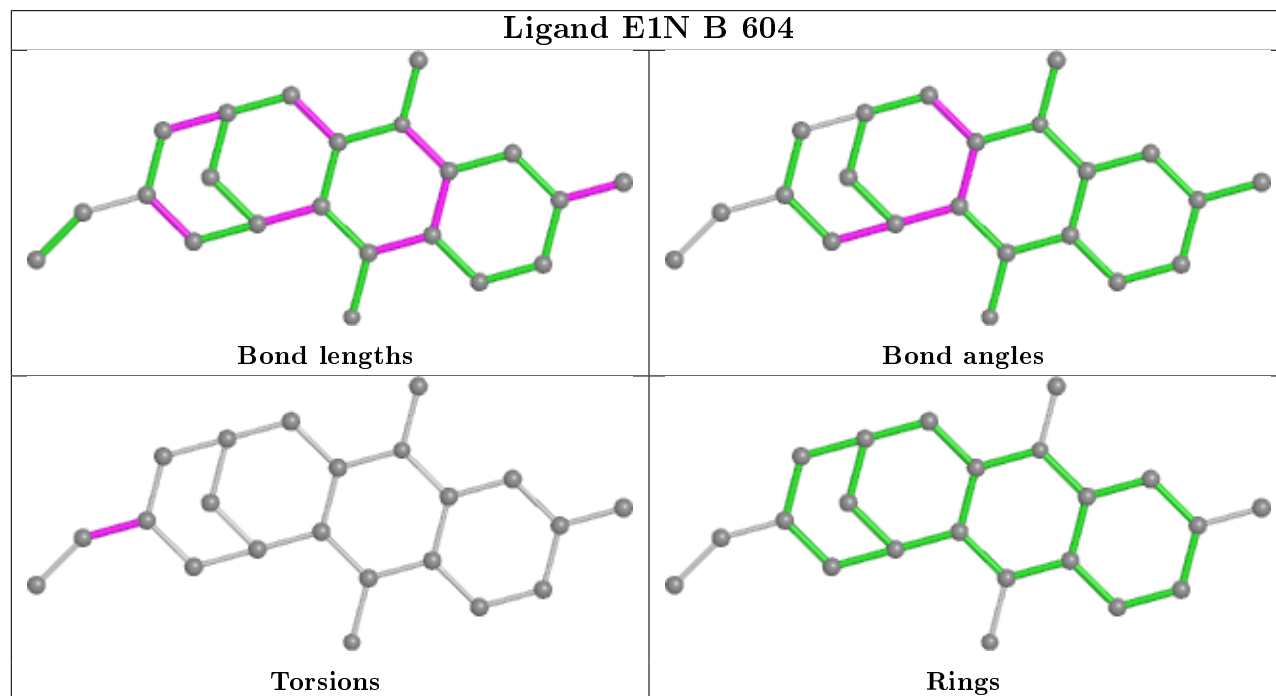
Mol	Chain	Res	Type	Atoms
3	B	604	E1N	CAS-CAT-CAU-CAV
3	A	604	E1N	CAS-CAT-CAU-CAV
2	A	601	NAG	O5-C5-C6-O6
2	A	601	NAG	C4-C5-C6-O6
2	A	601	NAG	C8-C7-N2-C2

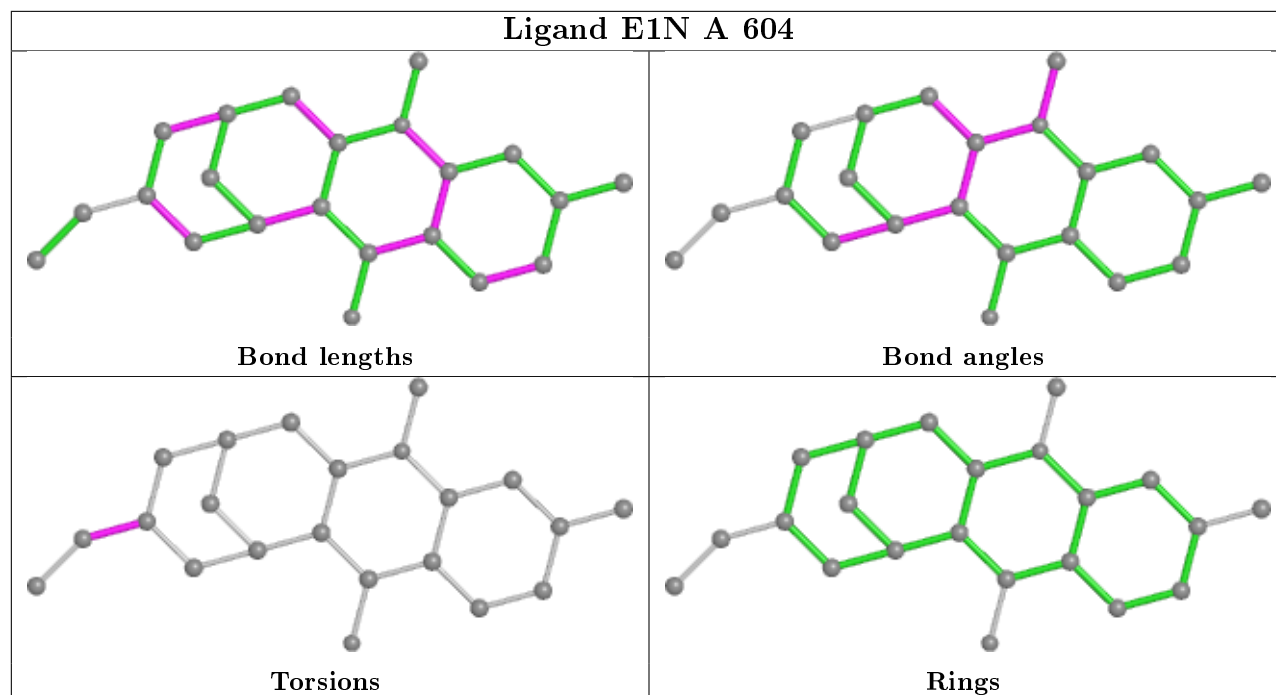
There are no ring outliers.

7 monomers are involved in 10 short contacts:

Mol	Chain	Res	Type	Clashes	Symm-Clashes
2	A	602	NAG	1	0
3	B	604	E1N	1	0
5	B	606	PEG	1	0
5	A	608	PEG	1	0
2	B	601	NAG	1	0
3	A	604	E1N	1	0
5	A	609	PEG	4	0

The following is a two-dimensional graphical depiction of Mogul quality analysis of bond lengths, bond angles, torsion angles, and ring geometry for all instances of the Ligand of Interest. In addition, ligands with molecular weight > 250 and outliers as shown on the validation Tables will also be included. For torsion angles, if less than 5% of the Mogul distribution of torsion angles is within 10 degrees of the torsion angle in question, then that torsion angle is considered an outlier. Any bond that is central to one or more torsion angles identified as an outlier by Mogul will be highlighted in the graph. For rings, the root-mean-square deviation (RMSD) between the ring in question and similar rings identified by Mogul is calculated over all ring torsion angles. If the average RMSD is greater than 60 degrees and the minimal RMSD between the ring in question and any Mogul-identified rings is also greater than 60 degrees, then that ring is considered an outlier. The outliers are highlighted in purple. The color gray indicates Mogul did not find sufficient equivalents in the CSD to analyse the geometry.





## 5.7 Other polymers [i](#)

There are no such residues in this entry.

## 5.8 Polymer linkage issues [i](#)

There are no chain breaks in this entry.

## 6 Fit of model and data [i](#)

### 6.1 Protein, DNA and RNA chains [i](#)

In the following table, the column labelled ‘#RSRZ> 2’ contains the number (and percentage) of RSRZ outliers, followed by percent RSRZ outliers for the chain as percentile scores relative to all X-ray entries and entries of similar resolution. The OWAB column contains the minimum, median, 95<sup>th</sup> percentile and maximum values of the occupancy-weighted average B-factor per residue. The column labelled ‘Q< 0.9’ lists the number of (and percentage) of residues with an average occupancy less than 0.9.

Mol	Chain	Analysed	<RSRZ>	#RSRZ>2	OWAB(Å <sup>2</sup> )	Q<0.9
1	A	532/565 (94%)	-0.21	7 (1%) 77 74	20, 29, 45, 92	3 (0%)
1	B	532/565 (94%)	-0.15	6 (1%) 80 78	19, 29, 46, 84	2 (0%)
All	All	1064/1130 (94%)	-0.18	13 (1%) 79 76	19, 29, 46, 92	5 (0%)

The worst 5 of 13 RSRZ outliers are listed below:

Mol	Chain	Res	Type	RSRZ
1	B	535	THR	7.6
1	A	486	HIS	5.5
1	B	486	HIS	3.8
1	B	257	ASN	3.5
1	A	488	GLN	2.6

### 6.2 Non-standard residues in protein, DNA, RNA chains [i](#)

There are no non-standard protein/DNA/RNA residues in this entry.

### 6.3 Carbohydrates [i](#)

There are no monosaccharides in this entry.

### 6.4 Ligands [i](#)

In the following table, the Atoms column lists the number of modelled atoms in the group and the number defined in the chemical component dictionary. The B-factors column lists the minimum, median, 95<sup>th</sup> percentile and maximum values of B factors of atoms in the group. The column labelled ‘Q< 0.9’ lists the number of atoms with occupancy less than 0.9.

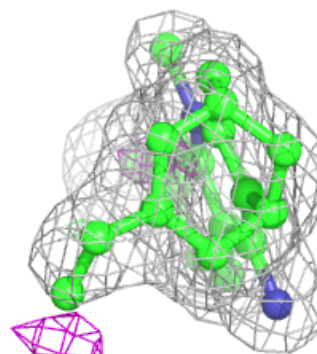
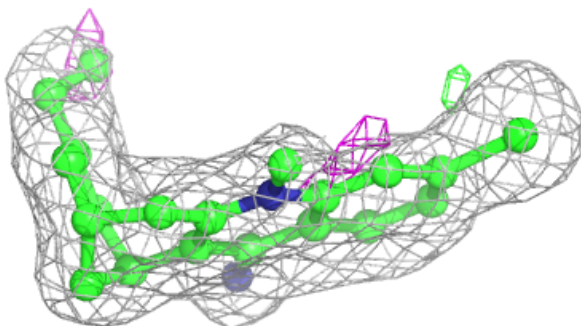
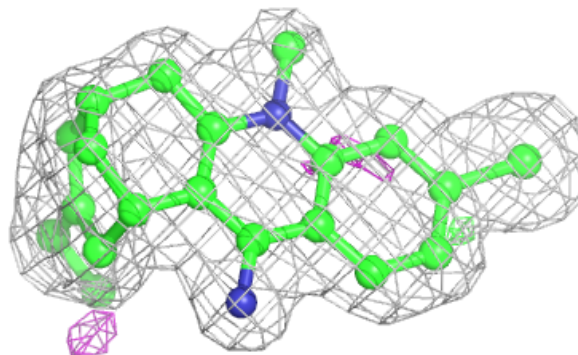


Mol	Type	Chain	Res	Atoms	RSCC	RSR	B-factors( $\text{\AA}^2$ )	Q<0.9
5	PEG	B	606	7/7	0.52	0.23	39,46,55,55	0
2	NAG	B	603	14/15	0.77	0.29	65,68,72,72	0
2	NAG	A	603	14/15	0.79	0.28	62,68,70,71	0
2	NAG	A	601	14/15	0.79	0.24	48,60,66,68	0
5	PEG	A	608	7/7	0.81	0.21	44,49,51,53	0
4	CL	A	605	1/1	0.84	0.09	59,59,59,59	0
2	NAG	A	602	14/15	0.86	0.11	38,45,53,60	0
2	NAG	B	601	14/15	0.89	0.17	42,50,56,58	0
5	PEG	A	609	7/7	0.90	0.25	29,37,46,55	0
2	NAG	B	602	14/15	0.91	0.09	34,40,47,51	0
4	CL	B	605	1/1	0.92	0.12	57,57,57,57	0
4	CL	A	606	1/1	0.95	0.04	54,54,54,54	0
3	E1N	B	604	22/22	0.95	0.13	22,26,28,36	0
3	E1N	A	604	22/22	0.95	0.12	24,26,29,35	0
4	CL	A	607	1/1	0.96	0.06	57,57,57,57	0

The following is a graphical depiction of the model fit to experimental electron density of all instances of the Ligand of Interest. In addition, ligands with molecular weight > 250 and outliers as shown on the geometry validation Tables will also be included. Each fit is shown from different orientation to approximate a three-dimensional view.

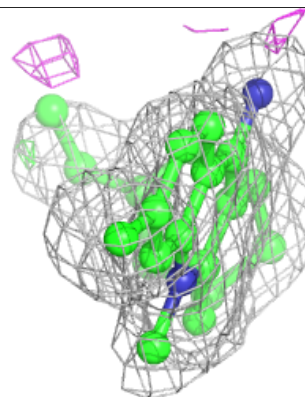
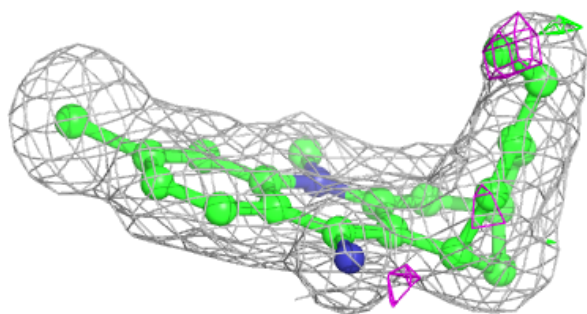
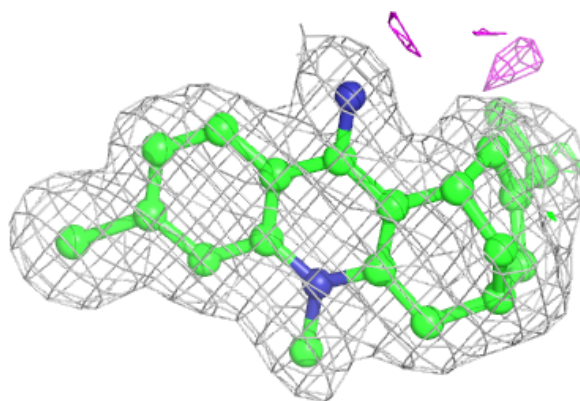
**Electron density around E1N B 604:**

2mF<sub>o</sub>-DF<sub>c</sub> (at 0.7 rmsd) in gray  
mF<sub>o</sub>-DF<sub>c</sub> (at 3 rmsd) in purple (negative)  
and green (positive)



**Electron density around E1N A 604:**

$2mF_o-DF_c$  (at 0.7 rmsd) in gray  
 $mF_o-DF_c$  (at 3 rmsd) in purple (negative)  
and green (positive)



## 6.5 Other polymers ⓘ

There are no such residues in this entry.