



Full wwPDB X-ray Structure Validation Report ⓘ

May 24, 2020 – 01:31 am BST

PDB ID : 4G24
Title : Crystal Structure of proteinaceous RNase P 1 (PRORP1) from *A. thaliana* with Mn
Authors : Koutmos, M.; Howard, M.J.; Fierke, C.A.
Deposited on : 2012-07-11
Resolution : 1.95 Å(reported)

This is a Full wwPDB X-ray Structure Validation Report for a publicly released PDB entry.

We welcome your comments at validation@mail.wwpdb.org

A user guide is available at

<https://www.wwpdb.org/validation/2017/XrayValidationReportHelp>

with specific help available everywhere you see the ⓘ symbol.

The following versions of software and data (see [references ⓘ](#)) were used in the production of this report:

MolProbity : 4.02b-467
Mogul : 1.8.5 (274361), CSD as541be (2020)
Xtriage (Phenix) : 1.13
EDS : 2.11
Percentile statistics : 20191225.v01 (using entries in the PDB archive December 25th 2019)
Refmac : 5.8.0158
CCP4 : 7.0.044 (Gargrove)
Ideal geometry (proteins) : Engh & Huber (2001)
Ideal geometry (DNA, RNA) : Parkinson et al. (1996)
Validation Pipeline (wwPDB-VP) : 2.11

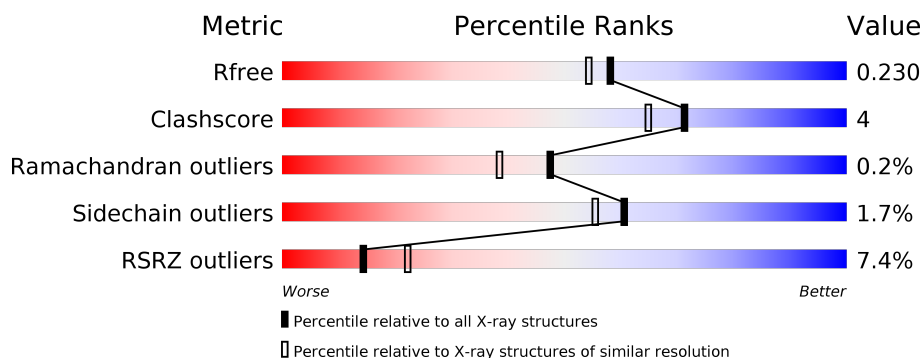
1 Overall quality at a glance

The following experimental techniques were used to determine the structure:

X-RAY DIFFRACTION


The reported resolution of this entry is 1.95 Å.

Percentile scores (ranging between 0-100) for global validation metrics of the entry are shown in the following graphic. The table shows the number of entries on which the scores are based.



Metric	Whole archive (#Entries)	Similar resolution (#Entries, resolution range(Å))
R_{free}	130704	2580 (1.96-1.96)
Clashscore	141614	2705 (1.96-1.96)
Ramachandran outliers	138981	2678 (1.96-1.96)
Sidechain outliers	138945	2678 (1.96-1.96)
RSRZ outliers	127900	2539 (1.96-1.96)

The table below summarises the geometric issues observed across the polymeric chains and their fit to the electron density. The red, orange, yellow and green segments on the lower bar indicate the fraction of residues that contain outliers for ≥ 3 , 2, 1 and 0 types of geometric quality criteria respectively. A grey segment represents the fraction of residues that are not modelled. The numeric value for each fraction is indicated below the corresponding segment, with a dot representing fractions $\leq 5\%$. The upper red bar (where present) indicates the fraction of residues that have poor fit to the electron density. The numeric value is given above the bar.

Mol	Chain	Length	Quality of chain
1	A	501	

2 Entry composition

There are 5 unique types of molecules in this entry. The entry contains 4182 atoms, of which 0 are hydrogens and 0 are deuteriums.

In the tables below, the ZeroOcc column contains the number of atoms modelled with zero occupancy, the AltConf column contains the number of residues with at least one atom in alternate conformation and the Trace column contains the number of residues modelled with at most 2 atoms.

- Molecule 1 is a protein called Pentatricopeptide repeat-containing protein At2g32230, mitochondrial.

Mol	Chain	Residues	Atoms					ZeroOcc	AltConf	Trace
1	A	476	Total	C	N	O	S	0	7	0
			3831	2422	676	708	25			

There are 5 discrepancies between the modelled and reference sequences:

Chain	Residue	Modelled	Actual	Comment	Reference
A	72	GLY	-	EXPRESSION TAG	UNP Q66GI4
A	73	ALA	-	EXPRESSION TAG	UNP Q66GI4
A	74	GLY	-	EXPRESSION TAG	UNP Q66GI4
A	75	HIS	-	EXPRESSION TAG	UNP Q66GI4
A	76	MET	-	EXPRESSION TAG	UNP Q66GI4

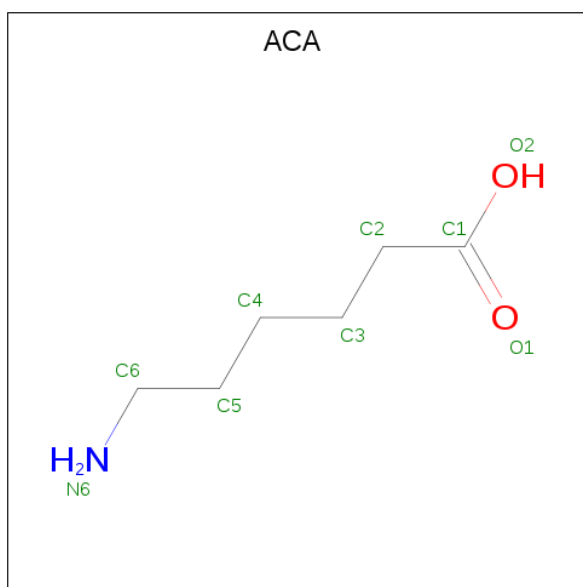
- Molecule 2 is ZINC ION (three-letter code: ZN) (formula: Zn).

Mol	Chain	Residues	Atoms		ZeroOcc	AltConf
2	A	1	Total	Zn	0	0
			1	1		

- Molecule 3 is MANGANESE (II) ION (three-letter code: MN) (formula: Mn).

Mol	Chain	Residues	Atoms		ZeroOcc	AltConf
3	A	2	Total	Mn	0	0
			2	2		

- Molecule 4 is 6-AMINOHEXANOIC ACID (three-letter code: ACA) (formula: C₆H₁₃NO₂).



Mol	Chain	Residues	Atoms				ZeroOcc	AltConf
4	A	1	Total	C	N	O	0	1
			18	12	2	4		

- Molecule 5 is water.

Mol	Chain	Residues	Atoms		ZeroOcc	AltConf
5	A	330	Total	O	0	0
			330	330		

- Molecule 1: Pentatricopeptide repeat-containing protein At2g32230, mitochondrial



4 Data and refinement statistics

Property	Value	Source
Space group	P 21 21 21	Depositor
Cell constants a, b, c, α , β , γ	41.75Å 112.47Å 138.76Å 90.00° 90.00° 90.00°	Depositor
Resolution (Å)	36.19 – 1.95 36.19 – 1.95	Depositor EDS
% Data completeness (in resolution range)	99.5 (36.19-1.95) 99.5 (36.19-1.95)	Depositor EDS
R_{merge}	(Not available)	Depositor
R_{sym}	0.06	Depositor
$\langle I/\sigma(I) \rangle$ ¹	3.29 (at 1.95Å)	Xtriage
Refinement program	REFMAC 5.6.0117	Depositor
R, R_{free}	0.194 , 0.227 0.196 , 0.230	Depositor DCC
R_{free} test set	2451 reflections (5.06%)	wwPDB-VP
Wilson B-factor (Å ²)	34.1	Xtriage
Anisotropy	0.151	Xtriage
Bulk solvent k_{sol} (e/Å ³), B_{sol} (Å ²)	0.35 , 52.5	EDS
L-test for twinning ²	$\langle L \rangle = 0.49$, $\langle L^2 \rangle = 0.32$	Xtriage
Estimated twinning fraction	No twinning to report.	Xtriage
F_o, F_c correlation	0.96	EDS
Total number of atoms	4182	wwPDB-VP
Average B, all atoms (Å ²)	47.0	wwPDB-VP

Xtriage's analysis on translational NCS is as follows: *The largest off-origin peak in the Patterson function is 4.19% of the height of the origin peak. No significant pseudotranslation is detected.*

¹Intensities estimated from amplitudes.

²Theoretical values of $\langle |L| \rangle$, $\langle L^2 \rangle$ for acentric reflections are 0.5, 0.333 respectively for untwinned datasets, and 0.375, 0.2 for perfectly twinned datasets.

5 Model quality

5.1 Standard geometry

Bond lengths and bond angles in the following residue types are not validated in this section: ACA, MN, ZN

The Z score for a bond length (or angle) is the number of standard deviations the observed value is removed from the expected value. A bond length (or angle) with $|Z| > 5$ is considered an outlier worth inspection. RMSZ is the root-mean-square of all Z scores of the bond lengths (or angles).

Mol	Chain	Bond lengths		Bond angles	
		RMSZ	$\# Z > 5$	RMSZ	$\# Z > 5$
1	A	0.65	7/3936 (0.2%)	0.69	0/5317

Chiral center outliers are detected by calculating the chiral volume of a chiral center and verifying if the center is modelled as a planar moiety or with the opposite hand. A planarity outlier is detected by checking planarity of atoms in a peptide group, atoms in a mainchain group or atoms of a sidechain that are expected to be planar.

Mol	Chain	#Chirality outliers	#Planarity outliers
1	A	0	1

All (7) bond length outliers are listed below:

Mol	Chain	Res	Type	Atoms	Z	Observed(Å)	Ideal(Å)
1	A	563	TRP	CD2-CE2	6.11	1.48	1.41
1	A	547	TRP	CD2-CE2	5.67	1.48	1.41
1	A	331	TRP	CD2-CE2	5.19	1.47	1.41
1	A	290	TRP	CD2-CE2	5.14	1.47	1.41
1	A	325	TRP	CD2-CE2	5.11	1.47	1.41
1	A	459	TRP	CD2-CE2	5.09	1.47	1.41
1	A	476	TRP	CD2-CE2	5.05	1.47	1.41

There are no bond angle outliers.

There are no chirality outliers.

All (1) planarity outliers are listed below:

Mol	Chain	Res	Type	Group
1	A	108	SER	Peptide

5.2 Too-close contacts ⓘ

In the following table, the Non-H and H(model) columns list the number of non-hydrogen atoms and hydrogen atoms in the chain respectively. The H(added) column lists the number of hydrogen atoms added and optimized by MolProbity. The Clashes column lists the number of clashes within the asymmetric unit, whereas Symm-Clashes lists symmetry related clashes.

Mol	Chain	Non-H	H(model)	H(added)	Clashes	Symm-Clashes
1	A	3831	0	3810	26	0
2	A	1	0	0	0	0
3	A	2	0	0	0	0
4	A	18	0	24	1	0
5	A	330	0	0	2	0
All	All	4182	0	3834	27	0

The all-atom clashscore is defined as the number of clashes found per 1000 atoms (including hydrogen atoms). The all-atom clashscore for this structure is 4.

All (27) close contacts within the same asymmetric unit are listed below, sorted by their clash magnitude.

Atom-1	Atom-2	Interatomic distance (Å)	Clash overlap (Å)
1:A:422:ARG:HH11	1:A:422:ARG:HG3	1.54	0.72
1:A:499:LEU:HD13	5:A:1429:HOH:O	1.90	0.72
1:A:422:ARG:NH1	1:A:422:ARG:HG3	2.13	0.63
1:A:107:CYS:O	1:A:107:CYS:SG	2.57	0.61
1:A:199:VAL:HG11	1:A:214:TYR:CE1	2.40	0.57
1:A:447:ALA:HB1	1:A:453[A]:ARG:HG3	1.87	0.55
1:A:107:CYS:HB2	1:A:112:ASP:HB3	1.89	0.53
1:A:437:LEU:O	1:A:467:ALA:HA	2.10	0.52
1:A:133:TYR:O	1:A:137:VAL:HG23	2.10	0.51
1:A:497:ASP:OD1	1:A:497:ASP:C	2.49	0.50
1:A:137:VAL:O	1:A:141:VAL:HG23	2.11	0.50
1:A:180:THR:O	1:A:184:ARG:HG2	2.11	0.49
1:A:418:ASN:O	1:A:422:ARG:HG2	2.11	0.49
1:A:390:ARG:HD2	5:A:1147:HOH:O	2.12	0.49
1:A:358:PRO:O	1:A:362[B]:GLU:HG3	2.14	0.48
1:A:107:CYS:HA	1:A:108:SER:HA	1.55	0.46
1:A:404:GLY:HA3	1:A:411:PHE:CE2	2.51	0.45
1:A:476:TRP:CZ2	1:A:499:LEU:HG	2.52	0.45
1:A:313:VAL:HG21	1:A:543:GLU:HG2	2.00	0.43
1:A:446:PRO:C	1:A:448:THR:H	2.22	0.43
1:A:168:ILE:HD12	1:A:207:ILE:CD1	2.49	0.42
1:A:221:PHE:CG	1:A:229:LYS:HB3	2.55	0.42

Continued on next page...

Continued from previous page...

Atom-1	Atom-2	Interatomic distance (Å)	Clash overlap (Å)
1:A:141:VAL:O	1:A:144:LEU:HB2	2.20	0.41
1:A:265:VAL:HG11	1:A:290:TRP:CD2	2.55	0.41
4:A:1004[A]:ACA:H61	4:A:1004[A]:ACA:H31	1.52	0.41
1:A:422:ARG:HH11	1:A:422:ARG:CG	2.24	0.40

There are no symmetry-related clashes.

5.3 Torsion angles [i](#)

5.3.1 Protein backbone [i](#)

In the following table, the Percentiles column shows the percent Ramachandran outliers of the chain as a percentile score with respect to all X-ray entries followed by that with respect to entries of similar resolution.

The Analysed column shows the number of residues for which the backbone conformation was analysed, and the total number of residues.

Mol	Chain	Analysed	Favoured	Allowed	Outliers	Percentiles
1	A	481/501 (96%)	465 (97%)	15 (3%)	1 (0%)	47 38

All (1) Ramachandran outliers are listed below:

Mol	Chain	Res	Type
1	A	447	ALA

5.3.2 Protein sidechains [i](#)

In the following table, the Percentiles column shows the percent sidechain outliers of the chain as a percentile score with respect to all X-ray entries followed by that with respect to entries of similar resolution.

The Analysed column shows the number of residues for which the sidechain conformation was analysed, and the total number of residues.

Mol	Chain	Analysed	Rotameric	Outliers	Percentiles
1	A	417/431 (97%)	410 (98%)	7 (2%)	60 55

All (7) residues with a non-rotameric sidechain are listed below:

Mol	Chain	Res	Type
1	A	97	GLU
1	A	185	LEU
1	A	196	PHE
1	A	255	VAL
1	A	299	THR
1	A	409	ARG
1	A	497	ASP

Some sidechains can be flipped to improve hydrogen bonding and reduce clashes. There are no such sidechains identified.

5.3.3 RNA [i](#)

There are no RNA molecules in this entry.

5.4 Non-standard residues in protein, DNA, RNA chains [i](#)

There are no non-standard protein/DNA/RNA residues in this entry.

5.5 Carbohydrates [i](#)

There are no carbohydrates in this entry.

5.6 Ligand geometry [i](#)

Of 5 ligands modelled in this entry, 3 are monoatomic - leaving 2 for Mogul analysis.

In the following table, the Counts columns list the number of bonds (or angles) for which Mogul statistics could be retrieved, the number of bonds (or angles) that are observed in the model and the number of bonds (or angles) that are defined in the Chemical Component Dictionary. The Link column lists molecule types, if any, to which the group is linked. The Z score for a bond length (or angle) is the number of standard deviations the observed value is removed from the expected value. A bond length (or angle) with $|Z| > 2$ is considered an outlier worth inspection. RMSZ is the root-mean-square of all Z scores of the bond lengths (or angles).

Mol	Type	Chain	Res	Link	Bond lengths			Bond angles		
					Counts	RMSZ	$\# Z > 2$	Counts	RMSZ	$\# Z > 2$
4	ACA	A	1004[A]	3	5,8,8	0.19	0	4,8,8	0.94	0
4	ACA	A	1004[B]	3	5,8,8	0.33	0	4,8,8	0.37	0

In the following table, the Chirals column lists the number of chiral outliers, the number of chiral

centers analysed, the number of these observed in the model and the number defined in the Chemical Component Dictionary. Similar counts are reported in the Torsion and Rings columns. '-' means no outliers of that kind were identified.

Mol	Type	Chain	Res	Link	Chirals	Torsions	Rings
4	ACA	A	1004[A]	3	-	1/4/6/6	-
4	ACA	A	1004[B]	3	-	1/4/6/6	-

There are no bond length outliers.

There are no bond angle outliers.

There are no chirality outliers.

All (2) torsion outliers are listed below:

Mol	Chain	Res	Type	Atoms
4	A	1004[A]	ACA	C3-C4-C5-C6
4	A	1004[B]	ACA	C2-C3-C4-C5

There are no ring outliers.

1 monomer is involved in 1 short contact:

Mol	Chain	Res	Type	Clashes	Symm-Clashes
4	A	1004[A]	ACA	1	0

5.7 Other polymers [i](#)

There are no such residues in this entry.

5.8 Polymer linkage issues [i](#)

There are no chain breaks in this entry.

6 Fit of model and data ⓘ

6.1 Protein, DNA and RNA chains ⓘ

In the following table, the column labelled ‘#RSRZ> 2’ contains the number (and percentage) of RSRZ outliers, followed by percent RSRZ outliers for the chain as percentile scores relative to all X-ray entries and entries of similar resolution. The OWAB column contains the minimum, median, 95th percentile and maximum values of the occupancy-weighted average B-factor per residue. The column labelled ‘Q< 0.9’ lists the number of (and percentage) of residues with an average occupancy less than 0.9.

Mol	Chain	Analysed	<RSRZ>	#RSRZ>2	OWAB(Å ²)	Q<0.9
1	A	476/501 (95%)	0.47	35 (7%) 14 22	21, 44, 84, 122	0

All (35) RSRZ outliers are listed below:

Mol	Chain	Res	Type	RSRZ
1	A	445	GLY	10.2
1	A	444	GLY	7.3
1	A	446	PRO	5.0
1	A	148	ALA	4.3
1	A	497	ASP	4.2
1	A	569	SER	4.2
1	A	448	THR	3.9
1	A	558	GLN	3.7
1	A	443	ASN	3.5
1	A	554	GLU	3.4
1	A	150	GLU	3.2
1	A	149	THR	3.1
1	A	570	LYS	2.8
1	A	206	GLY	2.8
1	A	310	ARG	2.7
1	A	441	ARG	2.7
1	A	205	PHE	2.7
1	A	442	VAL	2.7
1	A	125	ARG	2.7
1	A	276	VAL	2.6
1	A	272	LEU	2.5
1	A	249	LEU	2.5
1	A	102	GLN	2.4
1	A	204	ALA	2.4
1	A	308	LYS	2.4
1	A	332	ASN	2.4
1	A	106	MET	2.3

Continued on next page...

Continued from previous page...

Mol	Chain	Res	Type	RSRZ
1	A	434	LEU	2.3
1	A	108	SER	2.2
1	A	559	THR	2.2
1	A	498	HIS	2.2
1	A	110	LYS	2.2
1	A	307	LYS	2.2
1	A	128	VAL	2.1
1	A	269	LEU	2.1

6.2 Non-standard residues in protein, DNA, RNA chains [i](#)

There are no non-standard protein/DNA/RNA residues in this entry.

6.3 Carbohydrates [i](#)

There are no carbohydrates in this entry.

6.4 Ligands [i](#)

In the following table, the Atoms column lists the number of modelled atoms in the group and the number defined in the chemical component dictionary. The B-factors column lists the minimum, median, 95th percentile and maximum values of B factors of atoms in the group. The column labelled 'Q< 0.9' lists the number of atoms with occupancy less than 0.9.

Mol	Type	Chain	Res	Atoms	RSCC	RSR	B-factors(Å ²)	Q<0.9
4	ACA	A	1004[A]	9/9	0.86	0.22	34,38,39,39	9
4	ACA	A	1004[B]	9/9	0.86	0.22	42,45,50,50	9
3	MN	A	1003	1/1	0.97	0.06	53,53,53,53	1
3	MN	A	1002	1/1	0.99	0.11	38,38,38,38	0
2	ZN	A	1001	1/1	0.99	0.08	41,41,41,41	0

6.5 Other polymers [i](#)

There are no such residues in this entry.