



# Full wwPDB X-ray Structure Validation Report ⓘ

May 14, 2020 – 01:38 am BST

PDB ID : 6G7A  
Title : Crystal structure of human carbonic anhydrase isozyme XII 2-(benzylamino)-4-chloro-N-(2-hydroxyethyl)-5-sulfamoyl-benzamide  
Authors : Smirnov, A.; Manakova, E.; Grazulis, S.  
Deposited on : 2018-04-05  
Resolution : 1.42 Å(reported)

This is a Full wwPDB X-ray Structure Validation Report for a publicly released PDB entry.

We welcome your comments at [validation@mail.wwpdb.org](mailto:validation@mail.wwpdb.org)

A user guide is available at

<https://www.wwpdb.org/validation/2017/XrayValidationReportHelp>

with specific help available everywhere you see the ⓘ symbol.

---

The following versions of software and data (see [references ⓘ](#)) were used in the production of this report:

MolProbity : 4.02b-467  
Mogul : 1.8.5 (274361), CSD as541be (2020)  
Xtriage (Phenix) : 1.13  
EDS : 2.11  
buster-report : 1.1.7 (2018)  
Percentile statistics : 20191225.v01 (using entries in the PDB archive December 25th 2019)  
Refmac : 5.8.0158  
CCP4 : 7.0.044 (Gargrove)  
Ideal geometry (proteins) : Engh & Huber (2001)  
Ideal geometry (DNA, RNA) : Parkinson et al. (1996)  
Validation Pipeline (wwPDB-VP) : 2.11

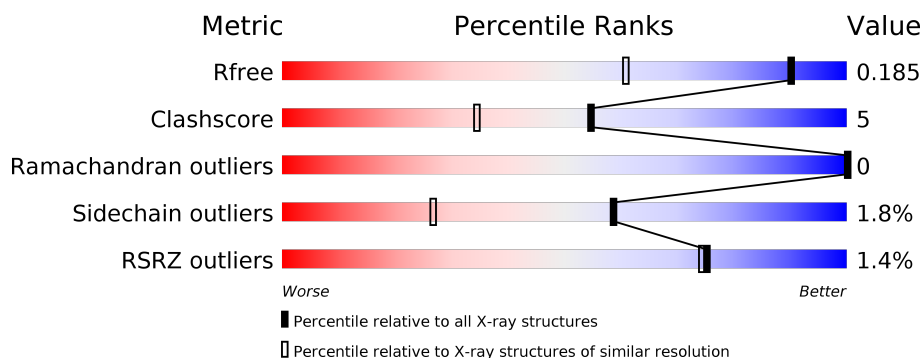
# 1 Overall quality at a glance

The following experimental techniques were used to determine the structure:

*X-RAY DIFFRACTION*

The reported resolution of this entry is 1.42 Å.

Percentile scores (ranging between 0-100) for global validation metrics of the entry are shown in the following graphic. The table shows the number of entries on which the scores are based.



Metric	Whole archive (#Entries)	Similar resolution (#Entries, resolution range(Å))
$R_{free}$	130704	2579 (1.44-1.40)
Clashscore	141614	2696 (1.44-1.40)
Ramachandran outliers	138981	2632 (1.44-1.40)
Sidechain outliers	138945	2631 (1.44-1.40)
RSRZ outliers	127900	2528 (1.44-1.40)

The table below summarises the geometric issues observed across the polymeric chains and their fit to the electron density. The red, orange, yellow and green segments on the lower bar indicate the fraction of residues that contain outliers for  $\geq 3$ , 2, 1 and 0 types of geometric quality criteria respectively. A grey segment represents the fraction of residues that are not modelled. The numeric value for each fraction is indicated below the corresponding segment, with a dot representing fractions  $\leq 5\%$ . The upper red bar (where present) indicates the fraction of residues that have poor fit to the electron density. The numeric value is given above the bar.

Mol	Chain	Length	Quality of chain
1	A	263	<div> <div style="width: 100%; height: 10px; background-color: red;"></div> <div style="width: 89%; height: 10px; background-color: green;"></div> <div style="width: 10%; height: 10px; background-color: yellow;"></div> <div style="width: 1%; height: 10px; background-color: red;"></div> <div style="width: 1%; height: 10px; background-color: grey;"></div> </div>
1	B	263	<div> <div style="width: 100%; height: 10px; background-color: red;"></div> <div style="width: 92%; height: 10px; background-color: green;"></div> <div style="width: 7%; height: 10px; background-color: yellow;"></div> <div style="width: 1%; height: 10px; background-color: red;"></div> <div style="width: 1%; height: 10px; background-color: grey;"></div> </div>
1	C	263	<div> <div style="width: 100%; height: 10px; background-color: red;"></div> <div style="width: 91%; height: 10px; background-color: green;"></div> <div style="width: 8%; height: 10px; background-color: yellow;"></div> <div style="width: 3%; height: 10px; background-color: red;"></div> <div style="width: 1%; height: 10px; background-color: grey;"></div> </div>
1	D	263	<div> <div style="width: 100%; height: 10px; background-color: red;"></div> <div style="width: 93%; height: 10px; background-color: green;"></div> <div style="width: 6%; height: 10px; background-color: yellow;"></div> <div style="width: 1%; height: 10px; background-color: red;"></div> <div style="width: 1%; height: 10px; background-color: grey;"></div> </div>

## 2 Entry composition

There are 5 unique types of molecules in this entry. The entry contains 10213 atoms, of which 0 are hydrogens and 0 are deuteriums.

In the tables below, the ZeroOcc column contains the number of atoms modelled with zero occupancy, the AltConf column contains the number of residues with at least one atom in alternate conformation and the Trace column contains the number of residues modelled with at most 2 atoms.

- Molecule 1 is a protein called Carbonic anhydrase 12.

Mol	Chain	Residues	Atoms					ZeroOcc	AltConf	Trace
1	A	262	Total	C	N	O	S	0	8	0
			2169	1375	372	414	8			
1	B	262	Total	C	N	O	S	0	9	0
			2179	1381	372	419	7			
1	C	262	Total	C	N	O	S	0	10	0
			2181	1380	376	417	8			
1	D	261	Total	C	N	O	S	0	6	0
			2151	1362	368	414	7			

There are 4 discrepancies between the modelled and reference sequences:

Chain	Residue	Modelled	Actual	Comment	Reference
A	1	MET	-	initiating methionine	UNP O43570
B	1	MET	-	initiating methionine	UNP O43570
C	1	MET	-	initiating methionine	UNP O43570
D	1	MET	-	initiating methionine	UNP O43570

- Molecule 2 is ZINC ION (three-letter code: ZN) (formula: Zn).

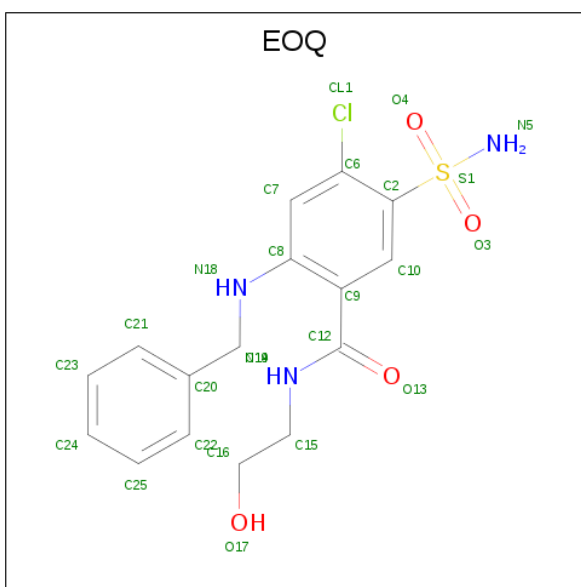
Mol	Chain	Residues	Atoms		ZeroOcc	AltConf
2	B	1	Total	Zn	0	0
			1	1		
2	A	1	Total	Zn	0	0
			1	1		
2	D	1	Total	Zn	0	0
			1	1		
2	C	1	Total	Zn	0	0
			1	1		

- Molecule 3 is 1,2-ETHANEDIOL (three-letter code: EDO) (formula: C<sub>2</sub>H<sub>6</sub>O<sub>2</sub>).



Mol	Chain	Residues	Atoms			ZeroOcc	AltConf
3	A	1	Total	C	O	0	0
			4	2	2		
3	B	1	Total	C	O	0	0
			4	2	2		
3	B	1	Total	C	O	0	0
			4	2	2		
3	B	1	Total	C	O	0	0
			4	2	2		
3	C	1	Total	C	O	0	0
			4	2	2		
3	C	1	Total	C	O	0	0
			4	2	2		
3	C	1	Total	C	O	0	0
			4	2	2		
3	D	1	Total	C	O	0	0
			4	2	2		
3	D	1	Total	C	O	0	0
			4	2	2		
3	D	1	Total	C	O	0	0
			4	2	2		
3	D	1	Total	C	O	0	0
			4	2	2		

- Molecule 4 is 4-chloranyl- {N}-(2-hydroxyethyl)-2-[(phenylmethyl)amino]-5-sulfamoyl-benzamide (three-letter code: EOQ) (formula: C<sub>16</sub>H<sub>18</sub>ClN<sub>3</sub>O<sub>4</sub>S).



Mol	Chain	Residues	Atoms						ZeroOcc	AltConf
4	A	1	Total 50	C 32	Cl 2	N 6	O 8	S 2	0	1
4	B	1	Total 25	C 16	Cl 1	N 3	O 4	S 1	0	0
4	C	1	Total 25	C 16	Cl 1	N 3	O 4	S 1	0	0
4	D	1	Total 25	C 16	Cl 1	N 3	O 4	S 1	0	0

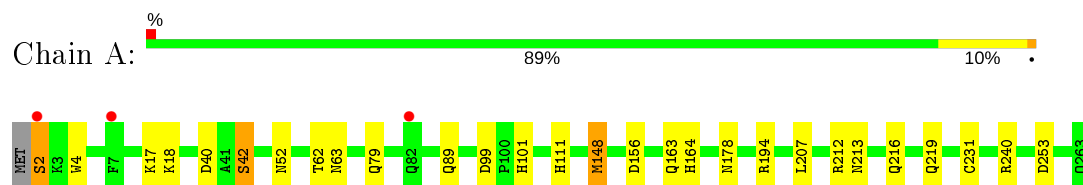
- Molecule 5 is water.

Mol	Chain	Residues	Atoms		ZeroOcc	AltConf
5	A	342	Total	O	0	0
			342	342		
5	B	351	Total	O	0	0
			351	351		
5	C	319	Total	O	0	0
			319	319		
5	D	344	Total	O	0	0
			344	344		

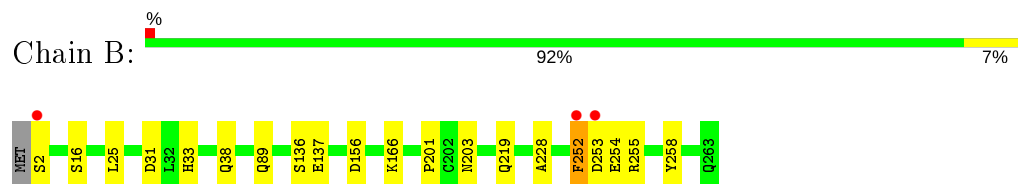
### 3 Residue-property plots [i](#)

These plots are drawn for all protein, RNA and DNA chains in the entry. The first graphic for a chain summarises the proportions of the various outlier classes displayed in the second graphic. The second graphic shows the sequence view annotated by issues in geometry and electron density. Residues are color-coded according to the number of geometric quality criteria for which they contain at least one outlier: green = 0, yellow = 1, orange = 2 and red = 3 or more. A red dot above a residue indicates a poor fit to the electron density ( $RSRZ > 2$ ). Stretches of 2 or more consecutive residues without any outlier are shown as a green connector. Residues present in the sample, but not in the model, are shown in grey.

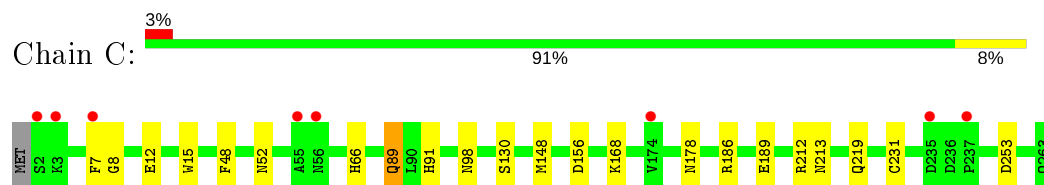
- Molecule 1: Carbonic anhydrase 12



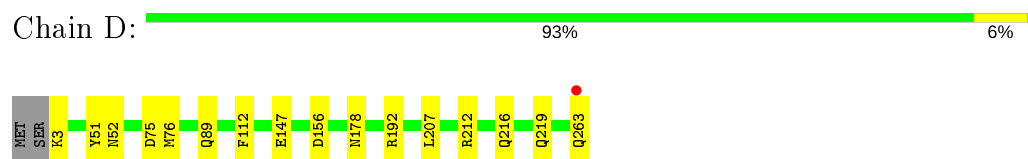
- Molecule 1: Carbonic anhydrase 12



- Molecule 1: Carbonic anhydrase 12



- Molecule 1: Carbonic anhydrase 12



## 4 Data and refinement statistics

Property	Value	Source
Space group	P 1 21 1	Depositor
Cell constants a, b, c, $\alpha$ , $\beta$ , $\gamma$	77.30Å 73.92Å 91.22Å 90.00° 108.92° 90.00°	Depositor
Resolution (Å)	73.12 – 1.42 56.14 – 1.42	Depositor EDS
% Data completeness (in resolution range)	94.7 (73.12-1.42) 94.7 (56.14-1.42)	Depositor EDS
$R_{merge}$	(Not available)	Depositor
$R_{sym}$	0.04	Depositor
$\langle I/\sigma(I) \rangle$ <sup>1</sup>	2.59 (at 1.42Å)	Xtriage
Refinement program	REFMAC	Depositor
R, $R_{free}$	0.152 , 0.186 0.152 , 0.185	Depositor DCC
$R_{free}$ test set	17232 reflections (9.95%)	wwPDB-VP
Wilson B-factor (Å <sup>2</sup> )	11.8	Xtriage
Anisotropy	0.135	Xtriage
Bulk solvent $k_{sol}$ (e/Å <sup>3</sup> ), $B_{sol}$ (Å <sup>2</sup> )	0.34 , 39.9	EDS
L-test for twinning <sup>2</sup>	$\langle  L  \rangle = 0.49$ , $\langle L^2 \rangle = 0.32$	Xtriage
Estimated twinning fraction	No twinning to report.	Xtriage
$F_o, F_c$ correlation	0.97	EDS
Total number of atoms	10213	wwPDB-VP
Average B, all atoms (Å <sup>2</sup> )	16.0	wwPDB-VP

Xtriage's analysis on translational NCS is as follows: *The analyses of the Patterson function reveals a significant off-origin peak that is 41.85 % of the origin peak, indicating pseudo-translational symmetry. The chance of finding a peak of this or larger height randomly in a structure without pseudo-translational symmetry is equal to 2.2232e-04. The detected translational NCS is most likely also responsible for the elevated intensity ratio.*

<sup>1</sup>Intensities estimated from amplitudes.

<sup>2</sup>Theoretical values of  $\langle |L| \rangle$ ,  $\langle L^2 \rangle$  for acentric reflections are 0.5, 0.333 respectively for untwinned datasets, and 0.375, 0.2 for perfectly twinned datasets.

## 5 Model quality [i](#)

### 5.1 Standard geometry [i](#)

Bond lengths and bond angles in the following residue types are not validated in this section: ZN, EOQ, EDO

The Z score for a bond length (or angle) is the number of standard deviations the observed value is removed from the expected value. A bond length (or angle) with  $|Z| > 5$  is considered an outlier worth inspection. RMSZ is the root-mean-square of all Z scores of the bond lengths (or angles).

Mol	Chain	Bond lengths		Bond angles	
		RMSZ	$\# Z  > 5$	RMSZ	$\# Z  > 5$
1	A	1.20	0/2232	1.15	0/3035
1	B	1.24	0/2244	1.22	0/3054
1	C	1.15	0/2244	1.16	1/3051 (0.0%)
1	D	1.23	0/2214	1.22	0/3013
All	All	1.21	0/8934	1.19	1/12153 (0.0%)

There are no bond length outliers.

All (1) bond angle outliers are listed below:

Mol	Chain	Res	Type	Atoms	Z	Observed(°)	Ideal(°)
1	C	253	ASP	CB-CG-OD2	-5.11	113.70	118.30

There are no chirality outliers.

There are no planarity outliers.

### 5.2 Too-close contacts [i](#)

In the following table, the Non-H and H(model) columns list the number of non-hydrogen atoms and hydrogen atoms in the chain respectively. The H(added) column lists the number of hydrogen atoms added and optimized by MolProbity. The Clashes column lists the number of clashes within the asymmetric unit, whereas Symm-Clashes lists symmetry related clashes.

Mol	Chain	Non-H	H(model)	H(added)	Clashes	Symm-Clashes
1	A	2169	0	2060	37	0
1	B	2179	0	2054	26	0
1	C	2181	0	2062	18	0
1	D	2151	0	2028	8	0
2	A	1	0	0	0	0
2	B	1	0	0	0	0

*Continued on next page...*

*Continued from previous page...*

Mol	Chain	Non-H	H(model)	H(added)	Clashes	Symm-Clashes
2	C	1	0	0	0	0
2	D	1	0	0	0	0
3	A	4	0	6	0	0
3	B	12	0	18	0	0
3	C	12	0	18	1	0
3	D	20	0	30	2	0
4	A	50	0	0	1	0
4	B	25	0	0	0	0
4	C	25	0	0	1	0
4	D	25	0	0	0	0
5	A	342	0	0	7	0
5	B	351	0	0	3	0
5	C	319	0	0	2	0
5	D	344	0	0	2	0
All	All	10213	0	8276	89	0

The all-atom clashscore is defined as the number of clashes found per 1000 atoms (including hydrogen atoms). The all-atom clashscore for this structure is 5.

All (89) close contacts within the same asymmetric unit are listed below, sorted by their clash magnitude.

Atom-1	Atom-2	Interatomic distance (Å)	Clash overlap (Å)
1:A:2[B]:SER:HA	1:A:18[B]:LYS:CE	1.83	1.08
1:C:89:GLN:HE22	1:C:91:HIS:HD1	1.01	0.95
1:A:2[B]:SER:HA	1:A:18[B]:LYS:HE2	1.53	0.87
1:B:201[A]:PRO:HG2	1:B:203[A]:ASN:OD1	1.76	0.84
1:B:252[A]:PHE:CE1	1:B:255:ARG:HB2	2.17	0.80
1:A:2[B]:SER:HA	1:A:18[B]:LYS:NZ	1.98	0.79
1:A:2[B]:SER:CB	1:A:18[B]:LYS:HE2	2.12	0.79
1:C:212[A]:ARG:HH11	1:C:213:ASN:HD21	1.30	0.78
1:A:2[B]:SER:CA	1:A:18[B]:LYS:HE2	2.14	0.78
1:C:148:MET:SD	1:C:219:GLN:HG2	2.25	0.77
1:C:7:PHE:CD1	1:C:8:GLY:N	2.52	0.77
1:A:2[B]:SER:HA	1:A:18[B]:LYS:CD	2.16	0.74
1:D:147[A]:GLU:HG2	1:D:216:GLN:HG2	1.67	0.74
1:A:216:GLN:HG3	5:A:663:HOH:O	1.88	0.73
1:B:252[A]:PHE:CZ	1:B:255:ARG:CB	2.71	0.73
1:C:89:GLN:NE2	1:C:91:HIS:HD1	1.84	0.73
1:A:2[B]:SER:CA	1:A:18[B]:LYS:CE	2.67	0.72
1:B:252[A]:PHE:CZ	1:B:255:ARG:HB2	2.25	0.72
1:A:17[B]:LYS:NZ	1:B:16:SER:OG	2.23	0.71

*Continued on next page...*

*Continued from previous page...*

Atom-1	Atom-2	Interatomic distance (Å)	Clash overlap (Å)
1:A:212[A]:ARG:HH11	1:A:213:ASN:HD21	1.40	0.70
1:A:40:ASP:OD1	1:A:42:SER:HB3	1.90	0.70
1:A:148:MET:SD	1:A:219:GLN:CA	2.81	0.69
1:A:148:MET:SD	1:A:219:GLN:N	2.66	0.68
1:B:252[A]:PHE:CZ	1:B:255:ARG:HB3	2.29	0.68
1:D:3:LYS:N	5:D:401:HOH:O	2.27	0.68
1:C:148:MET:HB3	5:C:654:HOH:O	1.94	0.67
1:A:2[B]:SER:HA	1:A:18[B]:LYS:HZ3	1.60	0.67
1:C:168:LYS:HB2	1:C:231[A]:CYS:O	1.95	0.66
1:A:253:ASP:OD2	5:A:401:HOH:O	2.14	0.66
1:B:255:ARG:CD	5:B:460:HOH:O	2.44	0.64
1:B:25:LEU:CD2	1:B:253[B]:ASP:OD2	2.46	0.64
1:A:148:MET:SD	1:A:219:GLN:HA	2.37	0.64
1:B:25:LEU:HD22	1:B:253[B]:ASP:OD2	1.98	0.62
1:D:212:ARG:HH12	1:D:263:GLN:CB	2.12	0.62
1:B:31:ASP:O	1:B:252[B]:PHE:HZ	1.83	0.62
1:D:212:ARG:HH12	1:D:263:GLN:HB3	1.65	0.61
1:B:25:LEU:HB3	5:B:455:HOH:O	2.01	0.60
1:B:252[A]:PHE:CE1	1:B:255:ARG:CB	2.85	0.59
1:B:252[A]:PHE:CD1	1:B:255:ARG:HB2	2.37	0.59
1:A:164:HIS:HD2	5:A:513:HOH:O	1.85	0.58
1:A:62[A]:THR:HG21	5:A:673:HOH:O	2.03	0.57
1:C:7:PHE:HD1	1:C:8:GLY:N	2.01	0.57
1:A:2[B]:SER:CA	1:A:18[B]:LYS:NZ	2.67	0.57
1:B:33:HIS:HE1	1:B:252[B]:PHE:CE1	2.23	0.56
1:A:4:TRP:HZ2	4:A:303[B]:EOQ:C16	2.20	0.55
1:B:252[A]:PHE:CE1	1:B:255:ARG:NE	2.76	0.54
1:A:111:HIS:HE1	5:A:679:HOH:O	1.91	0.53
1:A:2[B]:SER:CA	1:A:18[B]:LYS:HZ3	2.20	0.53
1:A:2[B]:SER:HB2	1:A:18[B]:LYS:HE2	1.89	0.53
1:C:186[A]:ARG:HD2	1:C:189:GLU:OE2	2.09	0.52
1:A:79:GLN:OE1	5:A:402:HOH:O	2.19	0.52
3:D:303:EDO:O2	3:D:304:EDO:H12	2.10	0.52
1:B:252[A]:PHE:CD2	1:B:255:ARG:O	2.64	0.51
1:A:194:ARG:NE	1:A:207:LEU:HD13	2.26	0.51
1:C:212[A]:ARG:NH1	1:C:213:ASN:HD21	2.02	0.50
1:A:231[B]:CYS:SG	1:A:240:ARG:NH1	2.84	0.50
1:C:48:PHE:CD2	3:C:303:EDO:H22	2.47	0.49
1:A:62[A]:THR:HG22	1:A:63:ASN:N	2.28	0.48
1:A:216:GLN:HG3	5:A:652:HOH:O	2.13	0.48
1:B:136:SER:O	1:B:137:GLU:HG2	2.13	0.48

*Continued on next page...*

*Continued from previous page...*

Atom-1	Atom-2	Interatomic distance (Å)	Clash overlap (Å)
1:B:252[A]:PHE:CE2	1:B:255:ARG:C	2.87	0.48
1:B:253[B]:ASP:O	1:B:254:GLU:HB2	2.14	0.47
1:C:168:LYS:HD2	1:C:231[A]:CYS:O	2.15	0.47
1:B:25:LEU:HD23	1:B:253[B]:ASP:OD2	2.13	0.47
1:B:255:ARG:HD2	5:B:460:HOH:O	2.09	0.47
1:A:212[A]:ARG:NH1	1:A:213:ASN:HD21	2.11	0.46
1:D:192:ARG:HD2	1:D:207:LEU:HD11	1.99	0.45
1:A:148:MET:HB3	1:A:148:MET:HE2	1.65	0.45
1:B:252[A]:PHE:CE1	1:B:255:ARG:CD	3.00	0.45
1:B:166[B]:LYS:HG3	1:B:228:ALA:O	2.17	0.44
1:D:52:ASN:HA	1:D:178:ASN:HA	1.97	0.44
1:B:252[A]:PHE:CE2	1:B:255:ARG:HB2	2.52	0.44
1:A:99:ASP:OD1	1:A:101:HIS:HD2	2.00	0.44
1:C:98:ASN:HB3	5:D:599:HOH:O	2.17	0.43
1:C:52:ASN:HA	1:C:178:ASN:HA	2.01	0.43
1:A:52:ASN:HA	1:A:178:ASN:HA	2.01	0.42
1:D:51:TYR:CD1	1:D:76:MET:HG3	2.54	0.42
1:C:89:GLN:C	1:C:89:GLN:HE21	2.23	0.42
1:A:148:MET:HE3	1:A:148:MET:C	2.40	0.42
1:A:17[B]:LYS:HG3	1:A:17[B]:LYS:HZ2	1.81	0.41
1:C:12:GLU:HA	1:C:15:TRP:CE2	2.55	0.41
1:D:112:PHE:HA	3:D:304:EDO:H21	2.00	0.41
1:C:130[B]:SER:HB3	4:C:305:EOQ:C24	2.51	0.41
1:A:2[B]:SER:N	1:A:18[B]:LYS:HZ3	2.18	0.41
1:B:252[A]:PHE:CD1	1:B:255:ARG:NE	2.88	0.41
1:A:148:MET:SD	1:A:219:GLN:HB3	2.61	0.41
1:A:231[B]:CYS:SG	1:A:240:ARG:HB2	2.61	0.41
1:B:38:GLN:O	1:B:258:TYR:HA	2.21	0.41
1:C:66:HIS:HA	5:C:581:HOH:O	2.21	0.40

There are no symmetry-related clashes.

## 5.3 Torsion angles ⓘ

### 5.3.1 Protein backbone ⓘ

In the following table, the Percentiles column shows the percent Ramachandran outliers of the chain as a percentile score with respect to all X-ray entries followed by that with respect to entries of similar resolution.

The Analysed column shows the number of residues for which the backbone conformation was analysed, and the total number of residues.

Mol	Chain	Analysed	Favoured	Allowed	Outliers	Percentiles	
1	A	267/263 (102%)	262 (98%)	5 (2%)	0	100	100
1	B	269/263 (102%)	260 (97%)	9 (3%)	0	100	100
1	C	269/263 (102%)	262 (97%)	7 (3%)	0	100	100
1	D	265/263 (101%)	258 (97%)	7 (3%)	0	100	100
All	All	1070/1052 (102%)	1042 (97%)	28 (3%)	0	100	100

There are no Ramachandran outliers to report.

### 5.3.2 Protein sidechains ⓘ

In the following table, the Percentiles column shows the percent sidechain outliers of the chain as a percentile score with respect to all X-ray entries followed by that with respect to entries of similar resolution.

The Analysed column shows the number of residues for which the sidechain conformation was analysed, and the total number of residues.

Mol	Chain	Analysed	Rotameric	Outliers	Percentiles	
1	A	242/235 (103%)	235 (97%)	7 (3%)	42	10
1	B	243/235 (103%)	237 (98%)	6 (2%)	47	14
1	C	243/235 (103%)	241 (99%)	2 (1%)	81	61
1	D	239/235 (102%)	234 (98%)	5 (2%)	53	20
All	All	967/940 (103%)	947 (98%)	20 (2%)	59	20

All (20) residues with a non-rotameric sidechain are listed below:

Mol	Chain	Res	Type
1	A	2[A]	SER
1	A	2[B]	SER
1	A	42	SER
1	A	89	GLN
1	A	148	MET
1	A	156	ASP
1	A	163	GLN
1	B	2	SER
1	B	89	GLN
1	B	156	ASP
1	B	219	GLN
1	B	252[A]	PHE
1	B	252[B]	PHE

*Continued on next page...*

*Continued from previous page...*

Mol	Chain	Res	Type
1	C	89	GLN
1	C	156	ASP
1	D	75	ASP
1	D	89	GLN
1	D	156	ASP
1	D	219[A]	GLN
1	D	219[B]	GLN

Some sidechains can be flipped to improve hydrogen bonding and reduce clashes. All (14) such sidechains are listed below:

Mol	Chain	Res	Type
1	A	33	HIS
1	A	58	GLN
1	A	110	GLN
1	A	111	HIS
1	A	164	HIS
1	A	213	ASN
1	B	101	HIS
1	B	110	GLN
1	B	219	GLN
1	C	66	HIS
1	C	89	GLN
1	C	213	ASN
1	D	101	HIS
1	D	164	HIS

### 5.3.3 RNA ⓘ

There are no RNA molecules in this entry.

## 5.4 Non-standard residues in protein, DNA, RNA chains ⓘ

There are no non-standard protein/DNA/RNA residues in this entry.

## 5.5 Carbohydrates ⓘ

There are no carbohydrates in this entry.

## 5.6 Ligand geometry

Of 21 ligands modelled in this entry, 4 are monoatomic - leaving 17 for Mogul analysis.

In the following table, the Counts columns list the number of bonds (or angles) for which Mogul statistics could be retrieved, the number of bonds (or angles) that are observed in the model and the number of bonds (or angles) that are defined in the Chemical Component Dictionary. The Link column lists molecule types, if any, to which the group is linked. The Z score for a bond length (or angle) is the number of standard deviations the observed value is removed from the expected value. A bond length (or angle) with  $|Z| > 2$  is considered an outlier worth inspection. RMSZ is the root-mean-square of all Z scores of the bond lengths (or angles).

Mol	Type	Chain	Res	Link	Bond lengths			Bond angles		
					Counts	RMSZ	# Z  > 2	Counts	RMSZ	# Z  > 2
3	EDO	C	304	-	3,3,3	1.25	0	2,2,2	1.06	0
4	EOQ	C	305	2	26,26,26	1.36	5 (19%)	36,36,36	1.85	12 (33%)
4	EOQ	B	305	2	26,26,26	1.66	7 (26%)	36,36,36	2.19	17 (47%)
3	EDO	D	304	-	3,3,3	0.91	0	2,2,2	0.19	0
4	EOQ	D	307	2	26,26,26	1.55	6 (23%)	36,36,36	2.38	15 (41%)
3	EDO	D	303	-	3,3,3	0.46	0	2,2,2	0.46	0
3	EDO	B	303	-	3,3,3	0.76	0	2,2,2	0.42	0
3	EDO	D	302	-	3,3,3	1.07	0	2,2,2	0.11	0
4	EOQ	A	303[A]	2	26,26,26	1.43	4 (15%)	36,36,36	1.80	6 (16%)
3	EDO	D	306	-	3,3,3	1.23	0	2,2,2	0.68	0
4	EOQ	A	303[B]	2	26,26,26	1.33	3 (11%)	36,36,36	1.98	10 (27%)
3	EDO	C	302	-	3,3,3	0.87	0	2,2,2	0.39	0
3	EDO	A	302	-	3,3,3	0.88	0	2,2,2	0.21	0
3	EDO	B	302	-	3,3,3	1.10	0	2,2,2	0.53	0
3	EDO	D	305	-	3,3,3	0.64	0	2,2,2	0.51	0
3	EDO	B	304	-	3,3,3	1.29	0	2,2,2	0.80	0
3	EDO	C	303	-	3,3,3	0.83	0	2,2,2	0.43	0

In the following table, the Chirals column lists the number of chiral outliers, the number of chiral centers analysed, the number of these observed in the model and the number defined in the Chemical Component Dictionary. Similar counts are reported in the Torsion and Rings columns. '-' means no outliers of that kind were identified.

Mol	Type	Chain	Res	Link	Chirals	Torsions	Rings
3	EDO	C	304	-	-	0/1/1/1	-
4	EOQ	C	305	2	-	0/19/19/19	0/2/2/2
4	EOQ	B	305	2	-	1/19/19/19	0/2/2/2
3	EDO	D	304	-	-	1/1/1/1	-
4	EOQ	D	307	2	-	1/19/19/19	0/2/2/2
3	EDO	D	303	-	-	1/1/1/1	-

*Continued on next page...*

*Continued from previous page...*

Mol	Type	Chain	Res	Link	Chirals	Torsions	Rings
3	EDO	B	303	-	-	0/1/1/1	-
3	EDO	D	302	-	-	0/1/1/1	-
4	EOQ	A	303[A]	2	-	1/19/19/19	0/2/2/2
3	EDO	D	306	-	-	1/1/1/1	-
4	EOQ	A	303[B]	2	-	2/19/19/19	0/2/2/2
3	EDO	C	302	-	-	1/1/1/1	-
3	EDO	A	302	-	-	0/1/1/1	-
3	EDO	B	302	-	-	1/1/1/1	-
3	EDO	D	305	-	-	1/1/1/1	-
3	EDO	B	304	-	-	1/1/1/1	-
3	EDO	C	303	-	-	0/1/1/1	-

All (25) bond length outliers are listed below:

Mol	Chain	Res	Type	Atoms	Z	Observed(Å)	Ideal(Å)
4	B	305	EOQ	C9-C12	-3.69	1.42	1.50
4	B	305	EOQ	C7-C8	-3.43	1.34	1.39
4	D	307	EOQ	C25-C22	3.08	1.45	1.38
4	A	303[B]	EOQ	O3-S1	3.01	1.49	1.43
4	B	305	EOQ	C15-C16	-2.96	1.40	1.50
4	A	303[A]	EOQ	O3-S1	2.85	1.49	1.43
4	B	305	EOQ	C19-C20	-2.76	1.45	1.51
4	C	305	EOQ	C22-C20	2.75	1.44	1.38
4	C	305	EOQ	C10-C9	2.73	1.44	1.39
4	A	303[A]	EOQ	C7-C8	-2.72	1.35	1.39
4	C	305	EOQ	C7-C8	-2.61	1.35	1.39
4	D	307	EOQ	C2-S1	2.60	1.80	1.77
4	D	307	EOQ	C23-C21	2.51	1.44	1.38
4	A	303[A]	EOQ	C9-C12	-2.38	1.45	1.50
4	A	303[A]	EOQ	C8-N18	2.30	1.43	1.37
4	B	305	EOQ	C23-C21	2.27	1.43	1.38
4	A	303[B]	EOQ	C8-N18	2.24	1.43	1.37
4	C	305	EOQ	C10-C2	2.23	1.42	1.39
4	B	305	EOQ	C2-S1	2.21	1.80	1.77
4	C	305	EOQ	C7-C6	2.13	1.42	1.38
4	B	305	EOQ	C23-C24	2.12	1.43	1.38
4	D	307	EOQ	C15-C16	-2.07	1.43	1.50
4	D	307	EOQ	C9-C12	-2.07	1.46	1.50
4	A	303[B]	EOQ	O4-S1	2.06	1.47	1.43
4	D	307	EOQ	C22-C20	2.02	1.43	1.38

All (60) bond angle outliers are listed below:

Mol	Chain	Res	Type	Atoms	Z	Observed(°)	Ideal(°)
4	D	307	EOQ	C21-C20-C22	5.40	126.65	118.17
4	B	305	EOQ	C20-C19-N18	-4.95	100.89	113.77
4	B	305	EOQ	C15-N14-C12	-4.68	111.41	122.08
4	D	307	EOQ	C19-C20-C21	-4.60	111.38	120.91
4	A	303[A]	EOQ	C2-C6-CL1	4.50	124.79	121.49
4	A	303[B]	EOQ	C7-C8-N18	-4.46	114.54	121.58
4	D	307	EOQ	C23-C24-C25	4.44	128.19	119.93
4	D	307	EOQ	C24-C23-C21	-4.40	113.49	120.19
4	A	303[B]	EOQ	C16-C15-N14	-4.06	102.50	111.64
4	A	303[B]	EOQ	C8-C9-C12	4.06	126.55	120.99
4	A	303[B]	EOQ	C2-C6-CL1	4.01	124.43	121.49
4	A	303[A]	EOQ	C7-C8-N18	-3.85	115.50	121.58
4	C	305	EOQ	C20-C19-N18	-3.65	104.28	113.77
4	A	303[A]	EOQ	C9-C10-C2	-3.64	117.06	122.02
4	C	305	EOQ	C7-C6-C2	3.58	124.99	121.38
4	B	305	EOQ	C7-C8-C9	3.58	124.01	118.89
4	D	307	EOQ	C25-C22-C20	-3.51	115.25	120.63
4	B	305	EOQ	O4-S1-N5	3.51	112.56	107.36
4	C	305	EOQ	C23-C24-C25	3.43	126.31	119.93
4	C	305	EOQ	C24-C25-C22	-3.42	114.98	120.19
4	D	307	EOQ	C8-C9-C12	3.39	125.64	120.99
4	D	307	EOQ	C10-C2-S1	3.29	122.28	118.34
4	B	305	EOQ	C21-C20-C22	3.27	123.30	118.17
4	B	305	EOQ	C6-C2-S1	-3.24	119.38	123.49
4	D	307	EOQ	C6-C2-S1	-3.18	119.46	123.49
4	A	303[A]	EOQ	C6-C2-S1	-3.11	119.54	123.49
4	A	303[B]	EOQ	C6-C2-S1	-3.06	119.61	123.49
4	B	305	EOQ	C9-C8-N18	-3.05	117.69	121.25
4	D	307	EOQ	C9-C8-N18	-3.01	117.74	121.25
4	B	305	EOQ	C8-C9-C12	2.87	124.93	120.99
4	C	305	EOQ	C7-C8-N18	-2.84	117.09	121.58
4	A	303[A]	EOQ	C7-C6-CL1	-2.84	113.91	118.49
4	D	307	EOQ	C2-C6-CL1	2.83	123.57	121.49
4	B	305	EOQ	C2-C6-CL1	2.82	123.56	121.49
4	B	305	EOQ	C10-C2-S1	2.76	121.64	118.34
4	D	307	EOQ	C24-C25-C22	-2.70	116.08	120.19
4	D	307	EOQ	C20-C19-N18	-2.68	106.79	113.77
4	D	307	EOQ	O4-S1-N5	2.66	111.31	107.36
4	B	305	EOQ	C19-C20-C21	-2.61	115.50	120.91
4	C	305	EOQ	C2-C6-CL1	-2.55	119.62	121.49
4	A	303[B]	EOQ	C9-C12-N14	2.51	122.29	117.36
4	C	305	EOQ	C21-C20-C22	2.50	122.09	118.17
4	C	305	EOQ	C9-C10-C2	-2.45	118.68	122.02

Continued on next page...

*Continued from previous page...*

Mol	Chain	Res	Type	Atoms	Z	Observed(°)	Ideal(°)
4	D	307	EOQ	O3-S1-C2	-2.41	103.75	107.29
4	A	303[A]	EOQ	C7-C8-C9	2.29	122.17	118.89
4	A	303[B]	EOQ	O13-C12-N14	-2.27	118.09	122.61
4	C	305	EOQ	O3-S1-N5	2.24	110.68	107.36
4	B	305	EOQ	C23-C21-C20	-2.21	117.25	120.63
4	B	305	EOQ	C7-C6-CL1	-2.20	114.93	118.49
4	B	305	EOQ	C10-C9-C8	-2.18	117.06	119.00
4	D	307	EOQ	O3-S1-N5	2.16	110.57	107.36
4	A	303[B]	EOQ	C7-C6-CL1	-2.09	115.11	118.49
4	C	305	EOQ	C10-C9-C8	2.08	120.86	119.00
4	B	305	EOQ	C7-C8-N18	-2.08	118.29	121.58
4	B	305	EOQ	C16-C15-N14	-2.07	106.99	111.64
4	C	305	EOQ	C23-C21-C20	-2.07	117.46	120.63
4	B	305	EOQ	O3-S1-C2	-2.07	104.26	107.29
4	A	303[B]	EOQ	C7-C8-C9	2.06	121.84	118.89
4	C	305	EOQ	C19-N18-C8	-2.02	116.79	121.97
4	A	303[B]	EOQ	C9-C8-N18	2.02	123.61	121.25

There are no chirality outliers.

All (12) torsion outliers are listed below:

Mol	Chain	Res	Type	Atoms
4	B	305	EOQ	C20-C19-N18-C8
3	D	304	EDO	O1-C1-C2-O2
3	D	305	EDO	O1-C1-C2-O2
4	A	303[B]	EOQ	N14-C15-C16-O17
3	D	306	EDO	O1-C1-C2-O2
3	B	304	EDO	O1-C1-C2-O2
3	B	302	EDO	O1-C1-C2-O2
3	C	302	EDO	O1-C1-C2-O2
4	A	303[A]	EOQ	C6-C2-S1-N5
4	A	303[B]	EOQ	C6-C2-S1-N5
4	D	307	EOQ	C6-C2-S1-N5
3	D	303	EDO	O1-C1-C2-O2

There are no ring outliers.

5 monomers are involved in 5 short contacts:

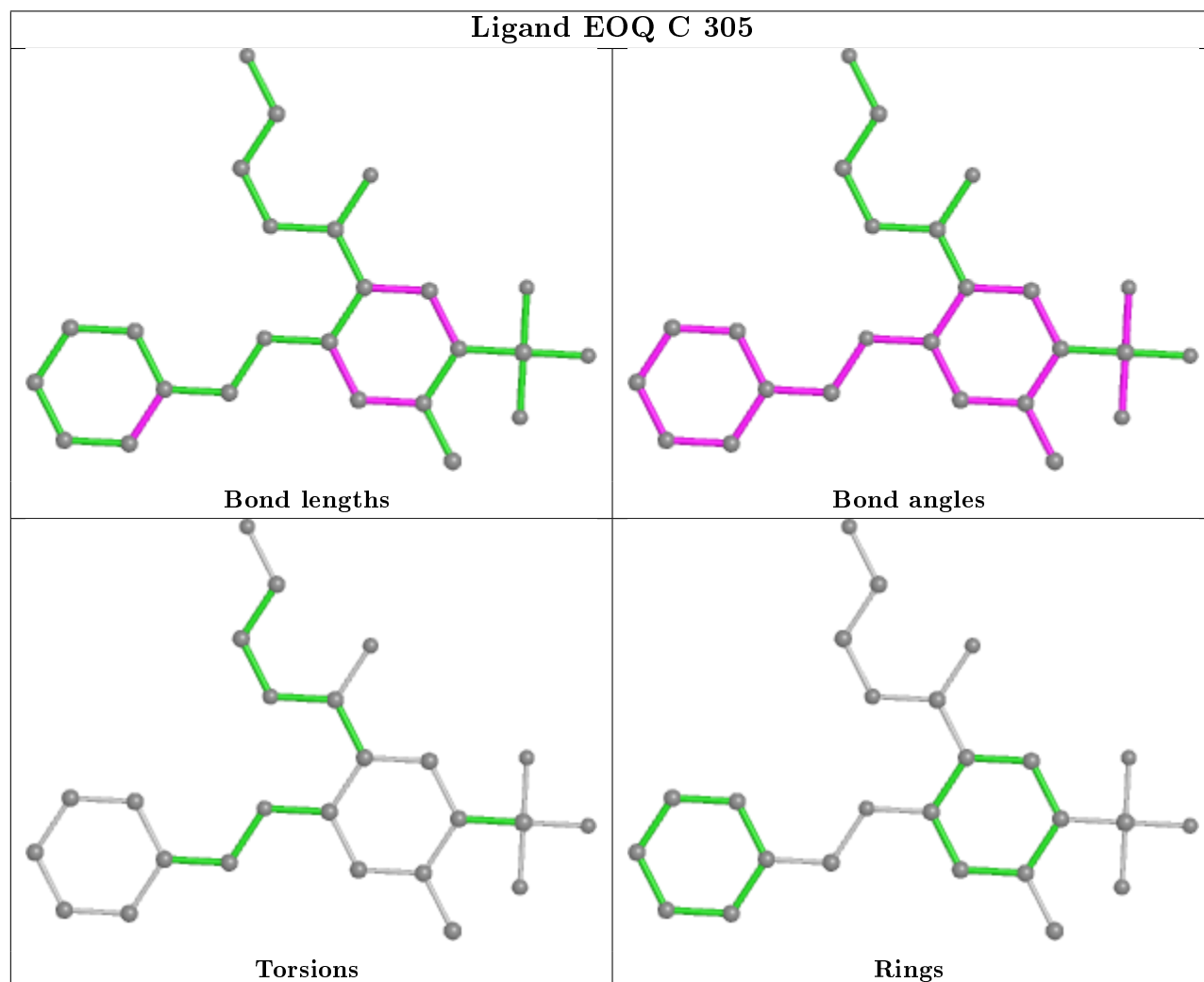
Mol	Chain	Res	Type	Clashes	Symm-Clashes
4	C	305	EOQ	1	0
3	D	304	EDO	2	0

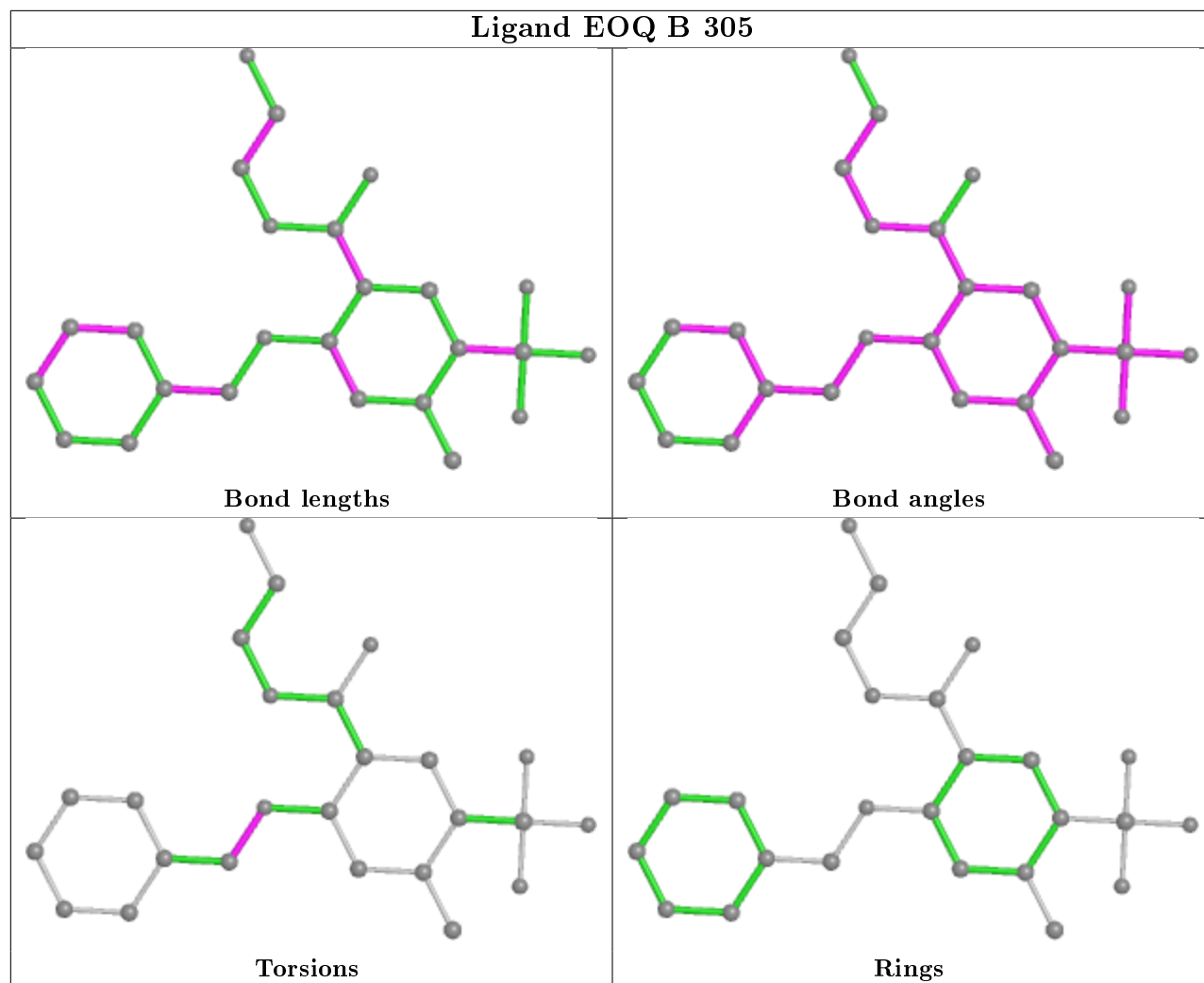
*Continued on next page...*

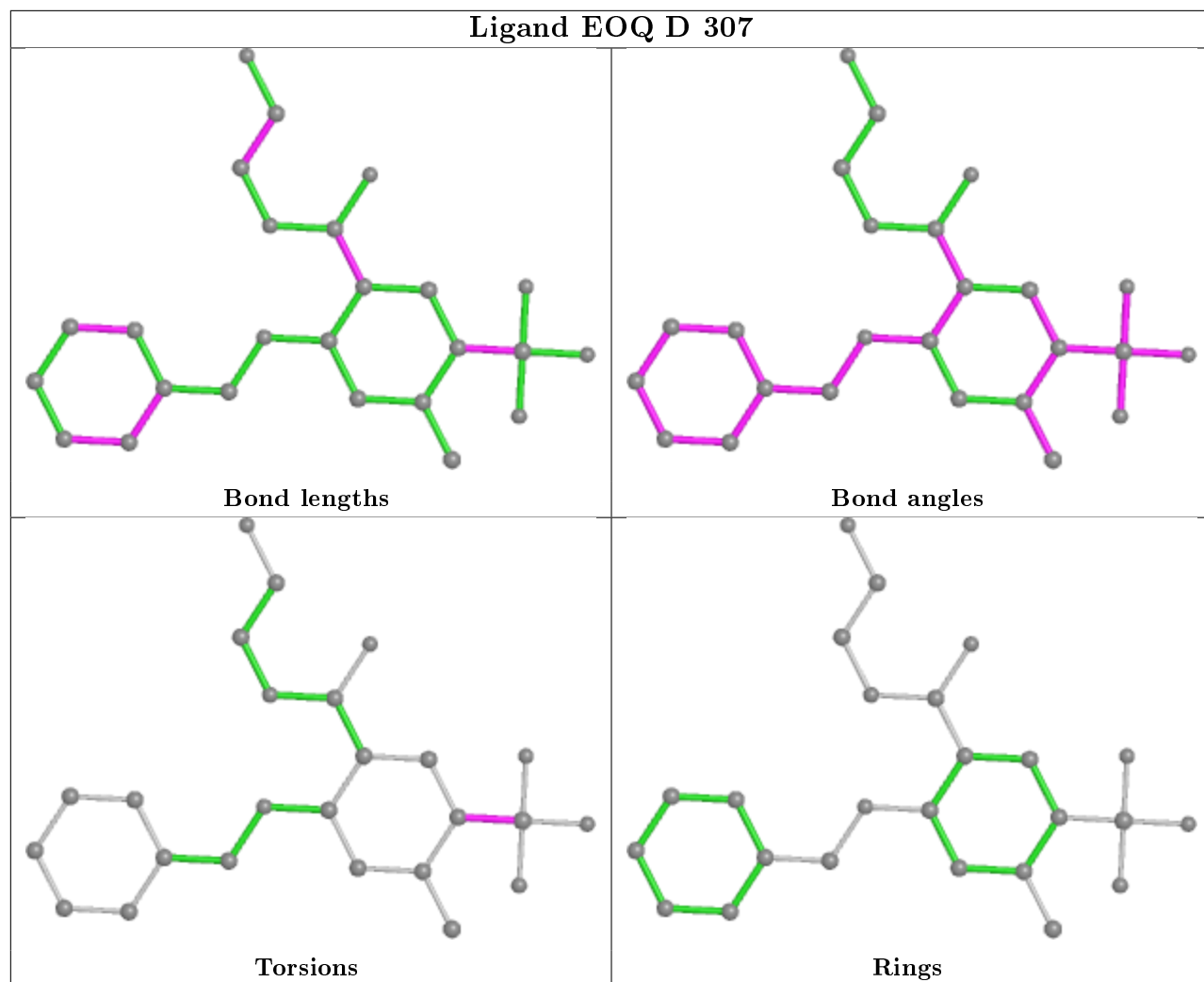
*Continued from previous page...*

Mol	Chain	Res	Type	Clashes	Symm-Clashes
3	D	303	EDO	1	0
4	A	303[B]	EOQ	1	0
3	C	303	EDO	1	0

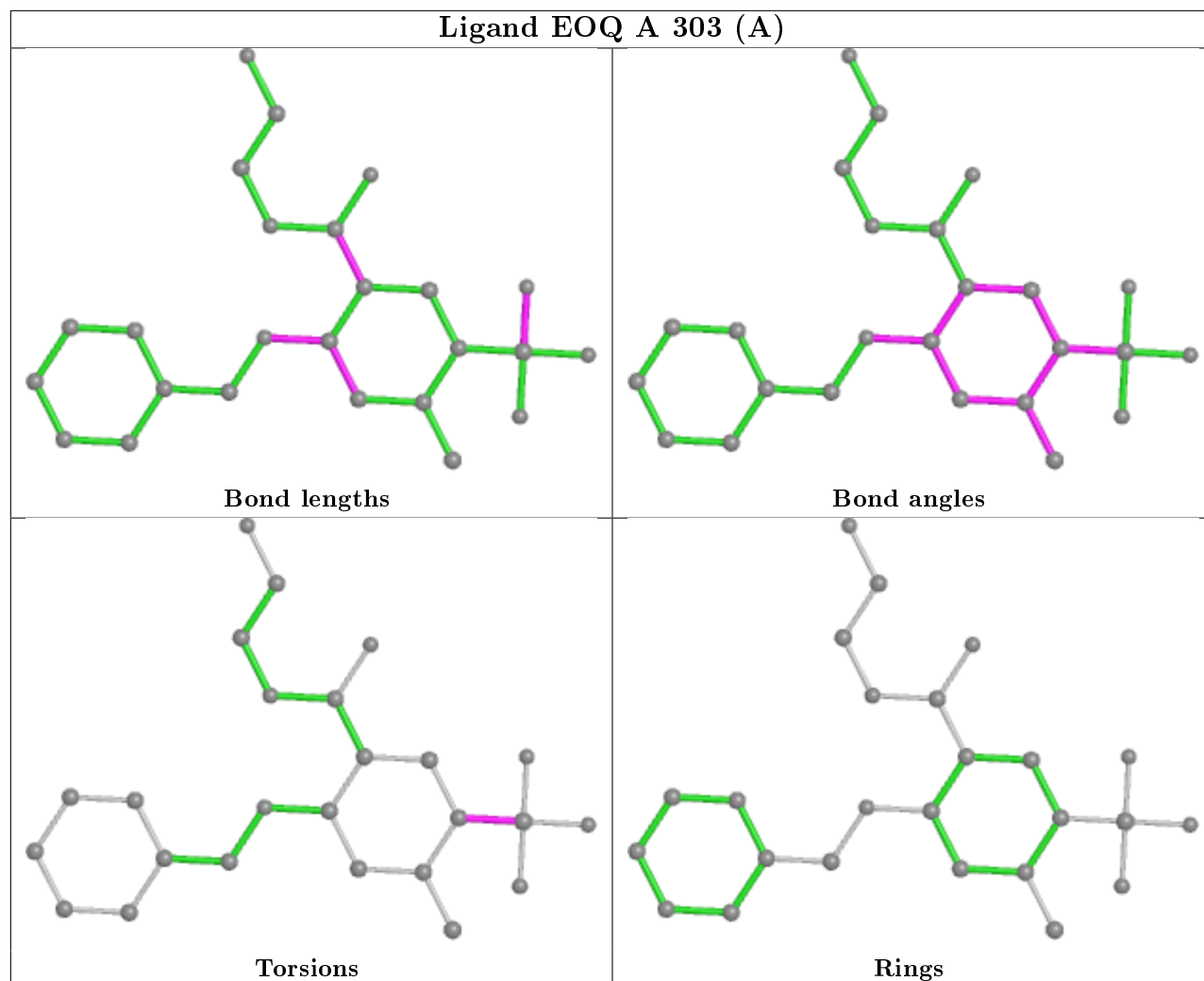
The following is a two-dimensional graphical depiction of Mogul quality analysis of bond lengths, bond angles, torsion angles, and ring geometry for all instances of the Ligand of Interest. In addition, ligands with molecular weight > 250 and outliers as shown on the validation Tables will also be included. For torsion angles, if less than 5% of the Mogul distribution of torsion angles is within 10 degrees of the torsion angle in question, then that torsion angle is considered an outlier. Any bond that is central to one or more torsion angles identified as an outlier by Mogul will be highlighted in the graph. For rings, the root-mean-square deviation (RMSD) between the ring in question and similar rings identified by Mogul is calculated over all ring torsion angles. If the average RMSD is greater than 60 degrees and the minimal RMSD between the ring in question and any Mogul-identified rings is also greater than 60 degrees, then that ring is considered an outlier. The outliers are highlighted in purple. The color gray indicates Mogul did not find sufficient equivalents in the CSD to analyse the geometry.

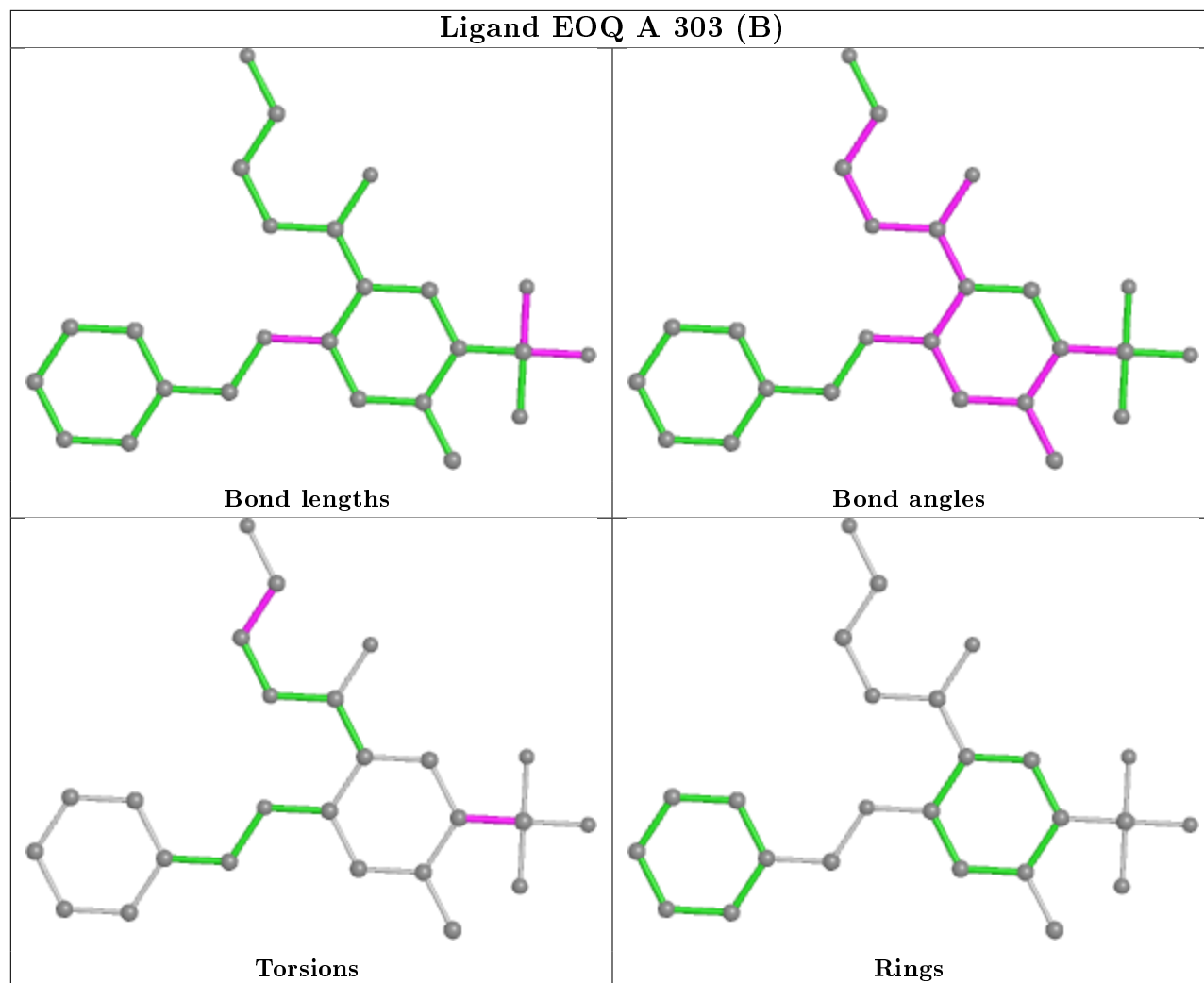






## Ligand EOQ A 303 (A)





## 5.7 Other polymers [i](#)

There are no such residues in this entry.

## 5.8 Polymer linkage issues [i](#)

There are no chain breaks in this entry.

## 6 Fit of model and data [i](#)

### 6.1 Protein, DNA and RNA chains [i](#)

In the following table, the column labelled ‘#RSRZ> 2’ contains the number (and percentage) of RSRZ outliers, followed by percent RSRZ outliers for the chain as percentile scores relative to all X-ray entries and entries of similar resolution. The OWAB column contains the minimum, median, 95<sup>th</sup> percentile and maximum values of the occupancy-weighted average B-factor per residue. The column labelled ‘Q< 0.9’ lists the number of (and percentage) of residues with an average occupancy less than 0.9.

Mol	Chain	Analysed	<RSRZ>	#RSRZ>2	OWAB(Å <sup>2</sup> )	Q<0.9
1	A	262/263 (99%)	-0.26	3 (1%) 80 79	7, 14, 29, 49	0
1	B	262/263 (99%)	-0.32	3 (1%) 80 79	6, 12, 25, 50	0
1	C	262/263 (99%)	-0.10	8 (3%) 49 48	8, 16, 34, 55	0
1	D	261/263 (99%)	-0.41	1 (0%) 92 91	7, 12, 23, 58	0
All	All	1047/1052 (99%)	-0.27	15 (1%) 75 74	6, 13, 29, 58	0

All (15) RSRZ outliers are listed below:

Mol	Chain	Res	Type	RSRZ
1	C	55	ALA	6.9
1	B	252[A]	PHE	5.3
1	C	2[A]	SER	4.5
1	D	263	GLN	4.1
1	C	56	ASN	3.2
1	A	7	PHE	3.2
1	A	2[A]	SER	3.2
1	C	7	PHE	3.1
1	C	235	ASP	3.0
1	B	2	SER	2.9
1	C	237	PRO	2.7
1	C	174	VAL	2.7
1	B	253[A]	ASP	2.5
1	C	3[A]	LYS	2.3
1	A	82	GLN	2.1

### 6.2 Non-standard residues in protein, DNA, RNA chains [i](#)

There are no non-standard protein/DNA/RNA residues in this entry.

## 6.3 Carbohydrates ⓘ

There are no carbohydrates in this entry.

## 6.4 Ligands ⓘ

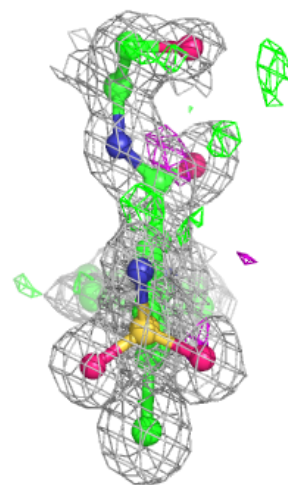
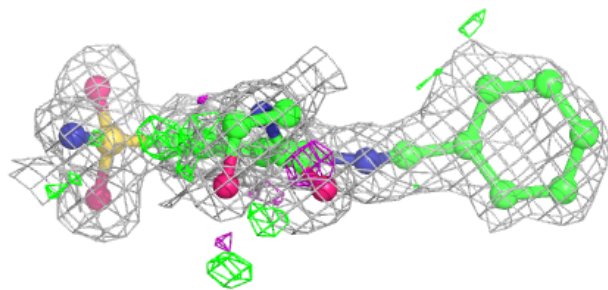
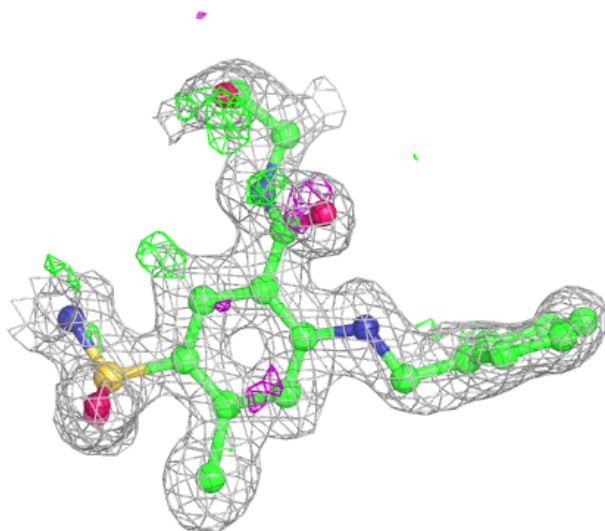
In the following table, the Atoms column lists the number of modelled atoms in the group and the number defined in the chemical component dictionary. The B-factors column lists the minimum, median, 95<sup>th</sup> percentile and maximum values of B factors of atoms in the group. The column labelled 'Q< 0.9' lists the number of atoms with occupancy less than 0.9.

Mol	Type	Chain	Res	Atoms	RSCC	RSR	B-factors(Å <sup>2</sup> )	Q<0.9
3	EDO	D	303	4/4	0.79	0.29	37,44,49,54	0
3	EDO	B	304	4/4	0.84	0.20	24,37,40,40	0
3	EDO	C	303	4/4	0.87	0.19	24,33,34,38	0
3	EDO	D	306	4/4	0.89	0.11	22,27,30,38	0
3	EDO	D	302	4/4	0.90	0.16	22,24,25,34	0
3	EDO	D	305	4/4	0.90	0.12	29,38,48,50	0
3	EDO	C	304	4/4	0.92	0.11	17,17,18,18	0
3	EDO	C	302	4/4	0.93	0.12	16,24,26,30	0
3	EDO	D	304	4/4	0.94	0.14	17,28,34,45	0
3	EDO	B	303	4/4	0.95	0.13	18,24,24,26	0
3	EDO	B	302	4/4	0.96	0.07	17,20,25,26	0
3	EDO	A	302	4/4	0.96	0.07	22,24,25,26	0
4	EOQ	A	303[A]	25/25	0.98	0.10	8,13,31,35	25
4	EOQ	A	303[B]	25/25	0.98	0.10	8,17,29,34	25
4	EOQ	C	305	25/25	0.98	0.08	9,14,25,32	0
4	EOQ	B	305	25/25	0.98	0.09	7,14,33,36	0
4	EOQ	D	307	25/25	0.99	0.07	7,11,20,22	0
2	ZN	B	301	1/1	1.00	0.05	6,6,6,6	0
2	ZN	A	301	1/1	1.00	0.04	7,7,7,7	0
2	ZN	C	301	1/1	1.00	0.04	9,9,9,9	0
2	ZN	D	301	1/1	1.00	0.04	7,7,7,7	0

The following is a graphical depiction of the model fit to experimental electron density of all instances of the Ligand of Interest. In addition, ligands with molecular weight > 250 and outliers as shown on the geometry validation Tables will also be included. Each fit is shown from different orientation to approximate a three-dimensional view.

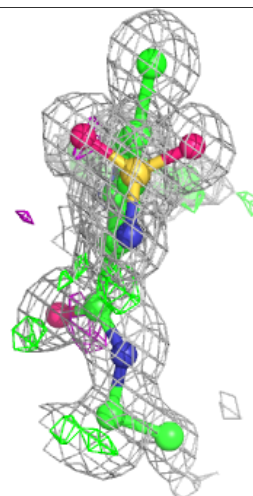
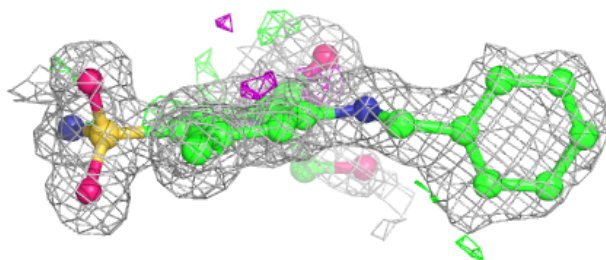
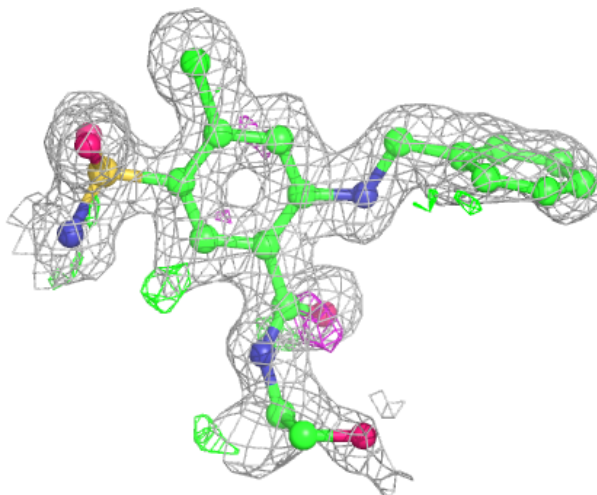
**Electron density around EOQ A 303 (A):**

$2mF_o-DF_c$  (at 0.7 rmsd) in gray  
 $mF_o-DF_c$  (at 3 rmsd) in purple (negative)  
and green (positive)



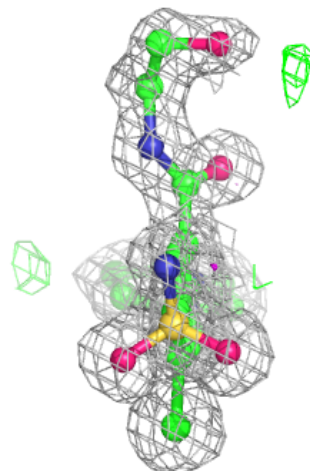
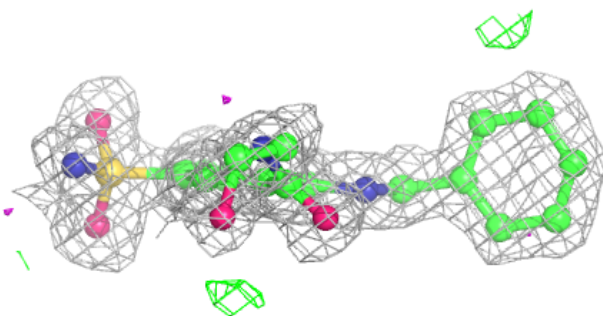
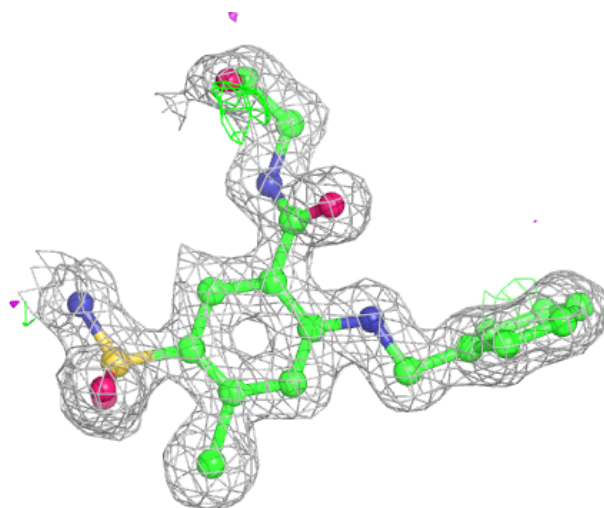
**Electron density around EOQ A 303 (B):**

$2mF_o-DF_c$  (at 0.7 rmsd) in gray  
 $mF_o-DF_c$  (at 3 rmsd) in purple (negative)  
and green (positive)



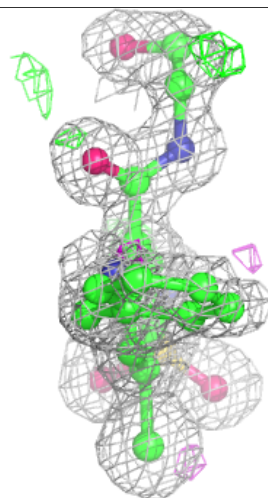
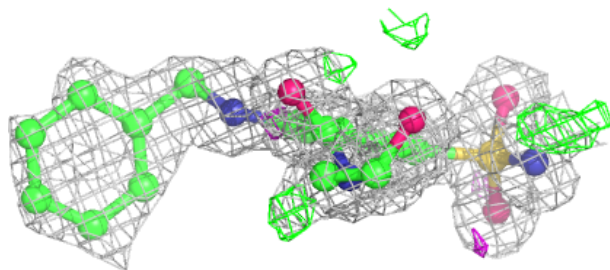
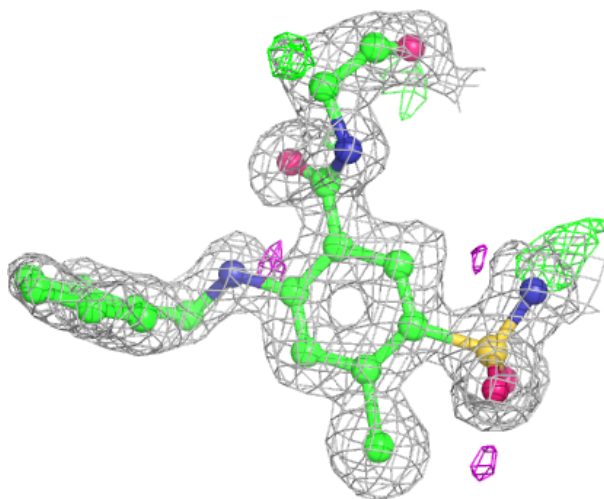
**Electron density around EOQ C 305:**

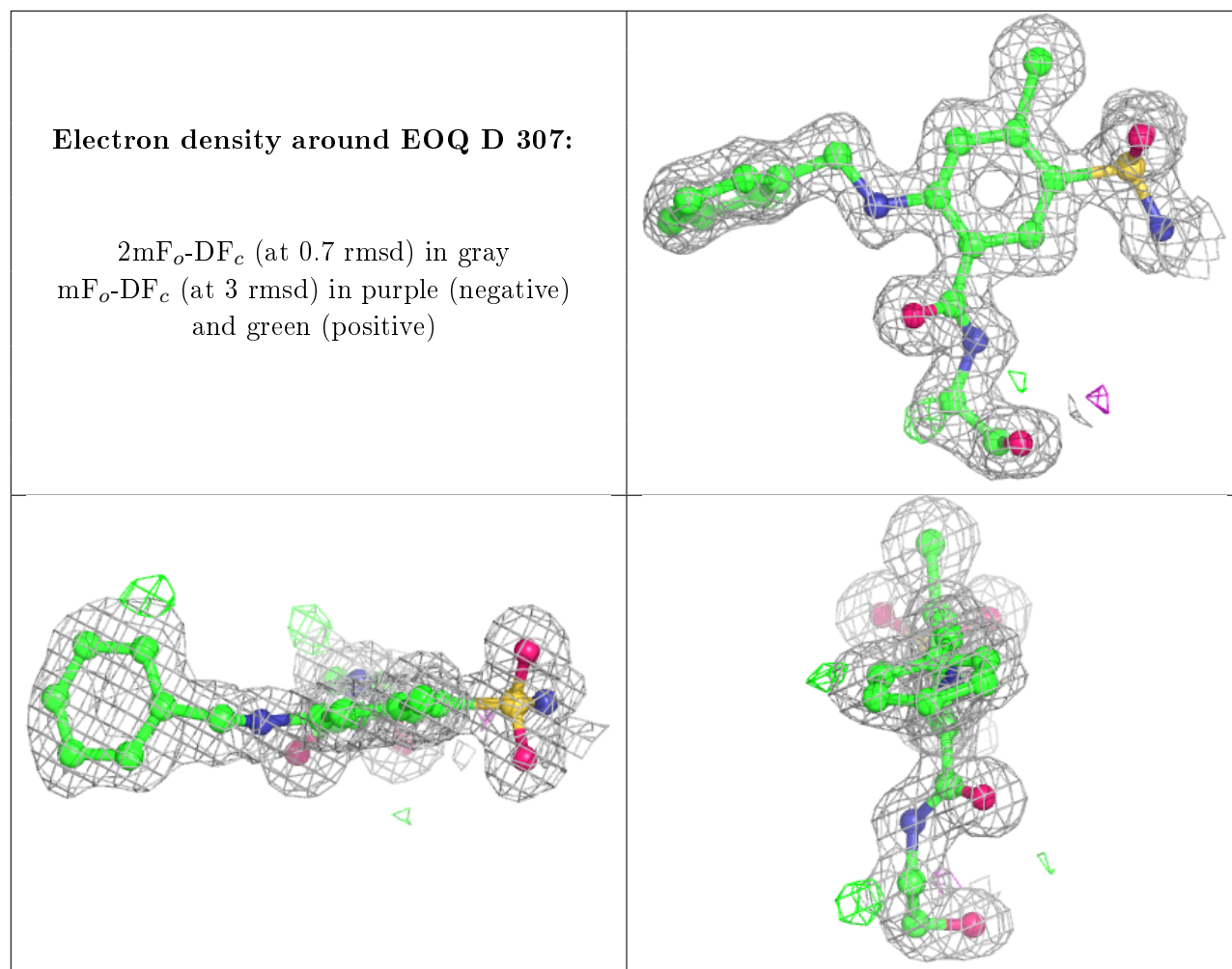
$2mF_o-DF_c$  (at 0.7 rmsd) in gray  
 $mF_o-DF_c$  (at 3 rmsd) in purple (negative)  
and green (positive)



**Electron density around EOQ B 305:**

$2mF_o-DF_c$  (at 0.7 rmsd) in gray  
 $mF_o-DF_c$  (at 3 rmsd) in purple (negative)  
and green (positive)





## 6.5 Other polymers ⓘ

There are no such residues in this entry.