



# wwPDB X-ray Structure Validation Summary Report ⓘ

May 15, 2020 – 07:21 am BST

PDB ID : 4GDP  
Title : Yeast polyamine oxidase FMS1, N195A mutant  
Authors : Taylor, A.B.; Adachi, M.S.; Hart, P.J.; Fitzpatrick, P.F.  
Deposited on : 2012-08-01  
Resolution : 2.00 Å(reported)

This is a wwPDB X-ray Structure Validation Summary Report for a publicly released PDB entry.

We welcome your comments at [validation@mail.wwpdb.org](mailto:validation@mail.wwpdb.org)

A user guide is available at

<https://www.wwpdb.org/validation/2017/XrayValidationReportHelp>

with specific help available everywhere you see the ⓘ symbol.

---

The following versions of software and data (see [references ⓘ](#)) were used in the production of this report:

MolProbity : 4.02b-467  
Mogul : 1.8.5 (274361), CSD as541be (2020)  
Xtriage (Phenix) : 1.13  
EDS : 2.11  
buster-report : 1.1.7 (2018)  
Percentile statistics : 20191225.v01 (using entries in the PDB archive December 25th 2019)  
Refmac : 5.8.0158  
CCP4 : 7.0.044 (Gargrove)  
Ideal geometry (proteins) : Engh & Huber (2001)  
Ideal geometry (DNA, RNA) : Parkinson et al. (1996)  
Validation Pipeline (wwPDB-VP) : 2.11

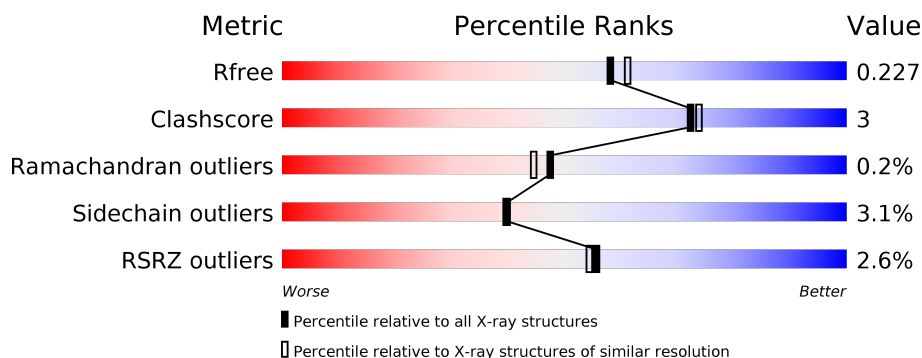
# 1 Overall quality at a glance

The following experimental techniques were used to determine the structure:

## *X-RAY DIFFRACTION*

The reported resolution of this entry is 2.00 Å.

Percentile scores (ranging between 0-100) for global validation metrics of the entry are shown in the following graphic. The table shows the number of entries on which the scores are based.



Metric	Whole archive (#Entries)	Similar resolution (#Entries, resolution range(Å))
$R_{free}$	130704	8085 (2.00-2.00)
Clashscore	141614	9178 (2.00-2.00)
Ramachandran outliers	138981	9054 (2.00-2.00)
Sidechain outliers	138945	9053 (2.00-2.00)
RSRZ outliers	127900	7900 (2.00-2.00)

The table below summarises the geometric issues observed across the polymeric chains and their fit to the electron density. The red, orange, yellow and green segments on the lower bar indicate the fraction of residues that contain outliers for  $\geq 3$ , 2, 1 and 0 types of geometric quality criteria respectively. A grey segment represents the fraction of residues that are not modelled. The numeric value for each fraction is indicated below the corresponding segment, with a dot representing fractions  $\leq 5\%$ . The upper red bar (where present) indicates the fraction of residues that have poor fit to the electron density. The numeric value is given above the bar.

Mol	Chain	Length	Quality of chain
1	A	516	<div> <div>3%</div> <div> <div></div> <div>87%</div> <div>9%</div> <div>•</div> </div> </div>
1	B	516	<div> <div>3%</div> <div> <div></div> <div>88%</div> <div>9%</div> <div>• •</div> </div> </div>
1	C	516	<div> <div>2%</div> <div> <div></div> <div>86%</div> <div>7%</div> <div>• 5%</div> </div> </div>
1	D	516	<div> <div>2%</div> <div> <div></div> <div>84%</div> <div>12%</div> <div>• •</div> </div> </div>

## 2 Entry composition

There are 4 unique types of molecules in this entry. The entry contains 16892 atoms, of which 0 are hydrogens and 0 are deuteriums.

In the tables below, the ZeroOcc column contains the number of atoms modelled with zero occupancy, the AltConf column contains the number of residues with at least one atom in alternate conformation and the Trace column contains the number of residues modelled with at most 2 atoms.

- Molecule 1 is a protein called Polyamine oxidase FMS1.

Mol	Chain	Residues	Atoms					ZeroOcc	AltConf	Trace
1	A	494	Total	C	N	O	S	0	2	0
			3967	2505	689	751	22			
1	B	502	Total	C	N	O	S	0	3	0
			4029	2544	698	763	24			
1	C	488	Total	C	N	O	S	0	1	0
			3916	2474	679	740	23			
1	D	498	Total	C	N	O	S	0	2	0
			3997	2525	693	757	22			

There are 36 discrepancies between the modelled and reference sequences:

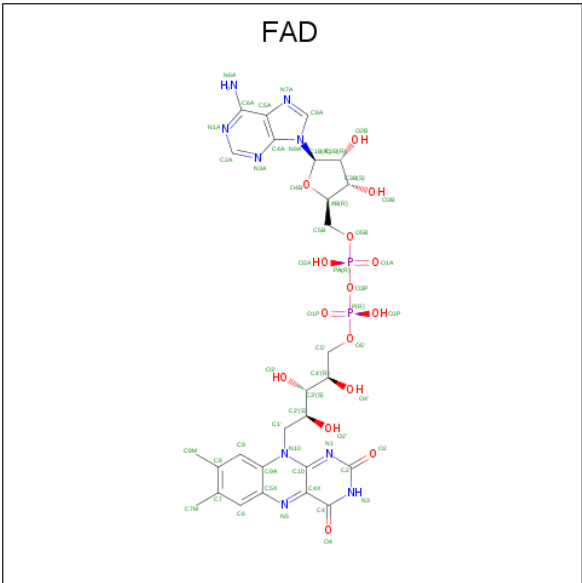
Chain	Residue	Modelled	Actual	Comment	Reference
A	195	ALA	ASN	ENGINEERED MUTATION	UNP P50264
A	509	LEU	-	EXPRESSION TAG	UNP P50264
A	510	GLU	-	EXPRESSION TAG	UNP P50264
A	511	HIS	-	EXPRESSION TAG	UNP P50264
A	512	HIS	-	EXPRESSION TAG	UNP P50264
A	513	HIS	-	EXPRESSION TAG	UNP P50264
A	514	HIS	-	EXPRESSION TAG	UNP P50264
A	515	HIS	-	EXPRESSION TAG	UNP P50264
A	516	HIS	-	EXPRESSION TAG	UNP P50264
B	195	ALA	ASN	ENGINEERED MUTATION	UNP P50264
B	509	LEU	-	EXPRESSION TAG	UNP P50264
B	510	GLU	-	EXPRESSION TAG	UNP P50264
B	511	HIS	-	EXPRESSION TAG	UNP P50264
B	512	HIS	-	EXPRESSION TAG	UNP P50264
B	513	HIS	-	EXPRESSION TAG	UNP P50264
B	514	HIS	-	EXPRESSION TAG	UNP P50264
B	515	HIS	-	EXPRESSION TAG	UNP P50264
B	516	HIS	-	EXPRESSION TAG	UNP P50264
C	195	ALA	ASN	ENGINEERED MUTATION	UNP P50264
C	509	LEU	-	EXPRESSION TAG	UNP P50264
C	510	GLU	-	EXPRESSION TAG	UNP P50264

*Continued on next page...*

Continued from previous page...

Chain	Residue	Modelled	Actual	Comment	Reference
C	511	HIS	-	EXPRESSION TAG	UNP P50264
C	512	HIS	-	EXPRESSION TAG	UNP P50264
C	513	HIS	-	EXPRESSION TAG	UNP P50264
C	514	HIS	-	EXPRESSION TAG	UNP P50264
C	515	HIS	-	EXPRESSION TAG	UNP P50264
C	516	HIS	-	EXPRESSION TAG	UNP P50264
D	195	ALA	ASN	ENGINEERED MUTATION	UNP P50264
D	509	LEU	-	EXPRESSION TAG	UNP P50264
D	510	GLU	-	EXPRESSION TAG	UNP P50264
D	511	HIS	-	EXPRESSION TAG	UNP P50264
D	512	HIS	-	EXPRESSION TAG	UNP P50264
D	513	HIS	-	EXPRESSION TAG	UNP P50264
D	514	HIS	-	EXPRESSION TAG	UNP P50264
D	515	HIS	-	EXPRESSION TAG	UNP P50264
D	516	HIS	-	EXPRESSION TAG	UNP P50264

- Molecule 2 is FLAVIN-ADENINE DINUCLEOTIDE (three-letter code: FAD) (formula: C<sub>27</sub>H<sub>33</sub>N<sub>9</sub>O<sub>15</sub>P<sub>2</sub>).



Mol	Chain	Residues	Atoms					ZeroOcc	AltConf
2	A	1	Total	C	N	O	P	0	0
			53	27	9	15	2		
2	B	1	Total	C	N	O	P	0	0
			53	27	9	15	2		
2	C	1	Total	C	N	O	P	0	0
			53	27	9	15	2		

Continued on next page...

Continued from previous page...

Mol	Chain	Residues	Atoms					ZeroOcc	AltConf
2	D	1	Total	C	N	O	P	0	0
			53	27	9	15	2		

- Molecule 3 is TETRAETHYLENE GLYCOL (three-letter code: PG4) (formula:  $C_8H_{18}O_5$ ).



Mol	Chain	Residues	Atoms			ZeroOcc	AltConf
3	A	1	Total	C	O	0	0
			13	8	5		
3	B	1	Total	C	O	0	0
			11	7	4		
3	C	1	Total	C	O	0	0
			13	8	5		
3	D	1	Total	C	O	0	0
			11	8	3		

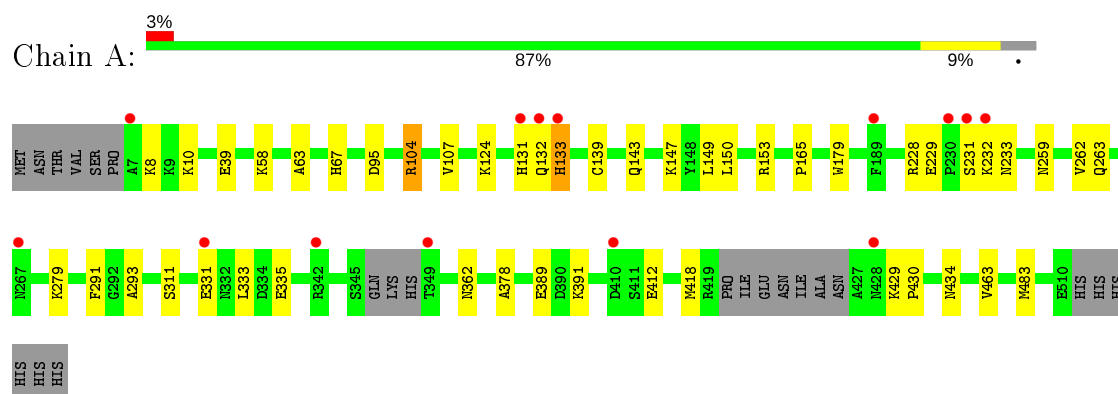
- Molecule 4 is water.

Mol	Chain	Residues	Atoms		ZeroOcc	AltConf
4	A	163	Total	O	0	0
			163	163		
4	B	199	Total	O	0	0
			199	199		
4	C	161	Total	O	0	0
			161	161		
4	D	200	Total	O	0	0
			200	200		

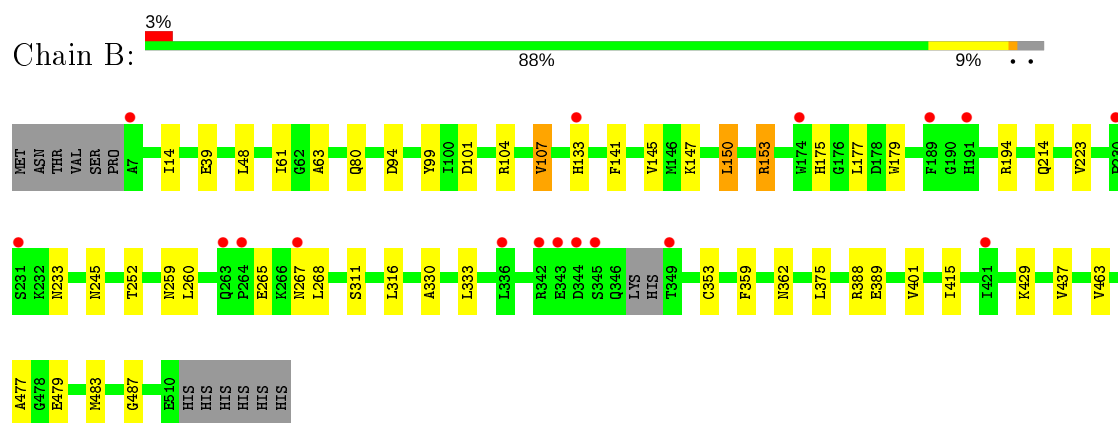
### 3 Residue-property plots [i](#)

These plots are drawn for all protein, RNA and DNA chains in the entry. The first graphic for a chain summarises the proportions of the various outlier classes displayed in the second graphic. The second graphic shows the sequence view annotated by issues in geometry and electron density. Residues are color-coded according to the number of geometric quality criteria for which they contain at least one outlier: green = 0, yellow = 1, orange = 2 and red = 3 or more. A red dot above a residue indicates a poor fit to the electron density ( $RSRZ > 2$ ). Stretches of 2 or more consecutive residues without any outlier are shown as a green connector. Residues present in the sample, but not in the model, are shown in grey.

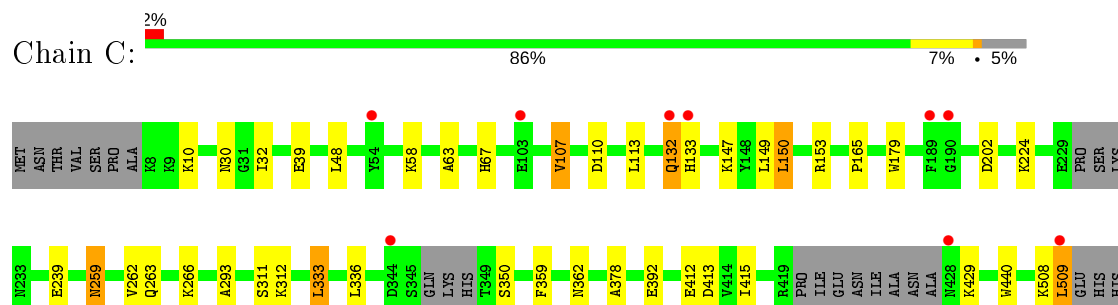
#### • Molecule 1: Polyamine oxidase FMS1



#### • Molecule 1: Polyamine oxidase FMS1



#### • Molecule 1: Polyamine oxidase FMS1



[illegible]

## 4 Data and refinement statistics

Property	Value	Source
Space group	P 1	Depositor
Cell constants a, b, c, $\alpha$ , $\beta$ , $\gamma$	78.85Å 81.89Å 104.79Å 78.07° 79.51° 78.92°	Depositor
Resolution (Å)	79.07 – 2.00 79.08 – 2.00	Depositor EDS
% Data completeness (in resolution range)	88.9 (79.07-2.00) 88.9 (79.08-2.00)	Depositor EDS
$R_{merge}$	(Not available)	Depositor
$R_{sym}$	0.11	Depositor
$\langle I/\sigma(I) \rangle$ <sup>1</sup>	3.06 (at 2.00Å)	Xtriage
Refinement program	PHENIX (phenix.refine: 1.7.3_928)	Depositor
R, $R_{free}$	0.203 , 0.234 0.196 , 0.227	Depositor DCC
$R_{free}$ test set	1999 reflections (1.34%)	wwPDB-VP
Wilson B-factor (Å <sup>2</sup> )	24.5	Xtriage
Anisotropy	0.437	Xtriage
Bulk solvent $k_{sol}$ (e/Å <sup>3</sup> ), $B_{sol}$ (Å <sup>2</sup> )	0.31 , 35.8	EDS
L-test for twinning <sup>2</sup>	$\langle  L  \rangle = 0.49$ , $\langle L^2 \rangle = 0.33$	Xtriage
Estimated twinning fraction	0.138 for -k,-h,-l	Xtriage
$F_o, F_c$ correlation	0.95	EDS
Total number of atoms	16892	wwPDB-VP
Average B, all atoms (Å <sup>2</sup> )	33.0	wwPDB-VP

Xtriage's analysis on translational NCS is as follows: *The largest off-origin peak in the Patterson function is 4.60% of the height of the origin peak. No significant pseudotranslation is detected.*

<sup>1</sup>Intensities estimated from amplitudes.

<sup>2</sup>Theoretical values of  $\langle |L| \rangle$ ,  $\langle L^2 \rangle$  for acentric reflections are 0.5, 0.333 respectively for untwinned datasets, and 0.375, 0.2 for perfectly twinned datasets.



## 5 Model quality [i](#)

### 5.1 Standard geometry [i](#)

Bond lengths and bond angles in the following residue types are not validated in this section: PG4, FAD

The Z score for a bond length (or angle) is the number of standard deviations the observed value is removed from the expected value. A bond length (or angle) with  $|Z| > 5$  is considered an outlier worth inspection. RMSZ is the root-mean-square of all Z scores of the bond lengths (or angles).

Mol	Chain	Bond lengths		Bond angles	
		RMSZ	$\# Z  > 5$	RMSZ	$\# Z  > 5$
1	A	0.28	0/4050	0.44	0/5474
1	B	0.28	0/4119	0.44	0/5570
1	C	0.28	0/3996	0.43	0/5399
1	D	0.28	0/4084	0.44	0/5523
All	All	0.28	0/16249	0.44	0/21966

There are no bond length outliers.

There are no bond angle outliers.

There are no chirality outliers.

There are no planarity outliers.

### 5.2 Too-close contacts [i](#)

In the following table, the Non-H and H(model) columns list the number of non-hydrogen atoms and hydrogen atoms in the chain respectively. The H(added) column lists the number of hydrogen atoms added and optimized by MolProbity. The Clashes column lists the number of clashes within the asymmetric unit, whereas Symm-Clashes lists symmetry related clashes.

Mol	Chain	Non-H	H(model)	H(added)	Clashes	Symm-Clashes
1	A	3967	0	3885	23	0
1	B	4029	0	3955	26	0
1	C	3916	0	3837	24	0
1	D	3997	0	3921	38	0
2	A	53	0	31	4	0
2	B	53	0	31	2	0
2	C	53	0	31	2	0
2	D	53	0	31	1	0
3	A	13	0	18	2	0

*Continued on next page...*

*Continued from previous page...*

Mol	Chain	Non-H	H(model)	H(added)	Clashes	Symm-Clashes
3	B	11	0	13	0	0
3	C	13	0	18	2	0
3	D	11	0	12	0	0
4	A	163	0	0	2	0
4	B	199	0	0	3	0
4	C	161	0	0	1	0
4	D	200	0	0	4	0
All	All	16892	0	15783	110	0

The all-atom clashscore is defined as the number of clashes found per 1000 atoms (including hydrogen atoms). The all-atom clashscore for this structure is 3.

The worst 5 of 110 close contacts within the same asymmetric unit are listed below, sorted by their clash magnitude.

Atom-1	Atom-2	Interatomic distance (Å)	Clash overlap (Å)
1:B:14:ILE:HD12	1:B:223:VAL:HG21	1.65	0.78
1:C:412:GLU:HG3	1:C:429:LYS:HE3	1.73	0.70
1:D:229:GLU:O	1:D:231:SER:N	2.22	0.70
1:D:9:LYS:N	1:D:34:ASP:O	2.26	0.68
1:A:133:HIS:O	1:D:393:ARG:NH2	2.29	0.65

There are no symmetry-related clashes.

## 5.3 Torsion angles [i](#)

### 5.3.1 Protein backbone [i](#)

In the following table, the Percentiles column shows the percent Ramachandran outliers of the chain as a percentile score with respect to all X-ray entries followed by that with respect to entries of similar resolution.

The Analysed column shows the number of residues for which the backbone conformation was analysed, and the total number of residues.

Mol	Chain	Analysed	Favoured	Allowed	Outliers	Percentiles	
1	A	490/516 (95%)	473 (96%)	17 (4%)	0	100	100
1	B	501/516 (97%)	488 (97%)	13 (3%)	0	100	100
1	C	481/516 (93%)	464 (96%)	16 (3%)	1 (0%)	47	44
1	D	496/516 (96%)	480 (97%)	14 (3%)	2 (0%)	34	30

*Continued on next page...*

*Continued from previous page...*

Mol	Chain	Analysed	Favoured	Allowed	Outliers	Percentiles
All	All	1968/2064 (95%)	1905 (97%)	60 (3%)	3 (0%)	47 44

All (3) Ramachandran outliers are listed below:

Mol	Chain	Res	Type
1	C	132	GLN
1	D	231	SER
1	D	230	PRO

### 5.3.2 Protein sidechains ⓘ

In the following table, the Percentiles column shows the percent sidechain outliers of the chain as a percentile score with respect to all X-ray entries followed by that with respect to entries of similar resolution.

The Analysed column shows the number of residues for which the sidechain conformation was analysed, and the total number of residues.

Mol	Chain	Analysed	Rotameric	Outliers	Percentiles
1	A	437/456 (96%)	419 (96%)	18 (4%)	30 28
1	B	445/456 (98%)	433 (97%)	12 (3%)	44 46
1	C	432/456 (95%)	421 (98%)	11 (2%)	47 49
1	D	441/456 (97%)	428 (97%)	13 (3%)	42 43
All	All	1755/1824 (96%)	1701 (97%)	54 (3%)	40 40

5 of 54 residues with a non-rotameric sidechain are listed below:

Mol	Chain	Res	Type
1	B	233	ASN
1	C	107	VAL
1	D	259	ASN
1	B	245	ASN
1	B	265	GLU

Some sidechains can be flipped to improve hydrogen bonding and reduce clashes. All (5) such sidechains are listed below:

Mol	Chain	Res	Type
1	A	28	HIS
1	A	233	ASN

*Continued on next page...*

*Continued from previous page...*

Mol	Chain	Res	Type
1	A	245	ASN
1	B	191	HIS
1	C	67	HIS

### 5.3.3 RNA [i](#)

There are no RNA molecules in this entry.

## 5.4 Non-standard residues in protein, DNA, RNA chains [i](#)

There are no non-standard protein/DNA/RNA residues in this entry.

## 5.5 Carbohydrates [i](#)

There are no carbohydrates in this entry.

## 5.6 Ligand geometry [i](#)

8 ligands are modelled in this entry.

In the following table, the Counts columns list the number of bonds (or angles) for which Mogul statistics could be retrieved, the number of bonds (or angles) that are observed in the model and the number of bonds (or angles) that are defined in the Chemical Component Dictionary. The Link column lists molecule types, if any, to which the group is linked. The Z score for a bond length (or angle) is the number of standard deviations the observed value is removed from the expected value. A bond length (or angle) with  $|Z| > 2$  is considered an outlier worth inspection. RMSZ is the root-mean-square of all Z scores of the bond lengths (or angles).

Mol	Type	Chain	Res	Link	Bond lengths			Bond angles		
					Counts	RMSZ	# Z  > 2	Counts	RMSZ	# Z  > 2
2	FAD	B	801	-	51,58,58	1.96	9 (17%)	60,89,89	1.74	10 (16%)
2	FAD	D	801	-	51,58,58	1.97	9 (17%)	60,89,89	1.74	10 (16%)
2	FAD	C	801	-	51,58,58	1.96	9 (17%)	60,89,89	1.98	13 (21%)
3	PG4	A	802	-	12,12,12	0.69	0	11,11,11	1.48	0
3	PG4	C	802	-	12,12,12	0.66	0	11,11,11	1.48	0
3	PG4	D	802	-	10,10,12	0.60	0	9,9,11	1.46	0
2	FAD	A	801	-	51,58,58	1.97	9 (17%)	60,89,89	1.74	10 (16%)
3	PG4	B	802	-	10,10,12	0.68	0	9,9,11	1.37	0

In the following table, the Chirals column lists the number of chiral outliers, the number of chiral

centers analysed, the number of these observed in the model and the number defined in the Chemical Component Dictionary. Similar counts are reported in the Torsion and Rings columns. '-' means no outliers of that kind were identified.

Mol	Type	Chain	Res	Link	Chirals	Torsions	Rings
2	FAD	B	801	-	-	1/30/50/50	0/6/6/6
2	FAD	D	801	-	-	1/30/50/50	0/6/6/6
2	FAD	C	801	-	-	2/30/50/50	0/6/6/6
3	PG4	A	802	-	-	8/10/10/10	-
3	PG4	C	802	-	-	3/10/10/10	-
3	PG4	D	802	-	-	6/8/8/10	-
2	FAD	A	801	-	-	1/30/50/50	0/6/6/6
3	PG4	B	802	-	-	3/8/8/10	-

The worst 5 of 36 bond length outliers are listed below:

Mol	Chain	Res	Type	Atoms	Z	Observed(Å)	Ideal(Å)
2	D	801	FAD	C10-N1	5.59	1.40	1.33
2	A	801	FAD	C10-N1	5.57	1.40	1.33
2	B	801	FAD	C8M-C8	-5.57	1.39	1.51
2	A	801	FAD	C7M-C7	-5.56	1.39	1.51
2	D	801	FAD	C7M-C7	-5.56	1.39	1.51

The worst 5 of 43 bond angle outliers are listed below:

Mol	Chain	Res	Type	Atoms	Z	Observed(°)	Ideal(°)
2	B	801	FAD	N3A-C2A-N1A	-6.77	118.10	128.68
2	D	801	FAD	N3A-C2A-N1A	-6.75	118.12	128.68
2	C	801	FAD	N3A-C2A-N1A	-6.74	118.14	128.68
2	A	801	FAD	N3A-C2A-N1A	-6.72	118.18	128.68
2	A	801	FAD	C4-N3-C2	5.83	120.06	115.14

There are no chirality outliers.

5 of 25 torsion outliers are listed below:

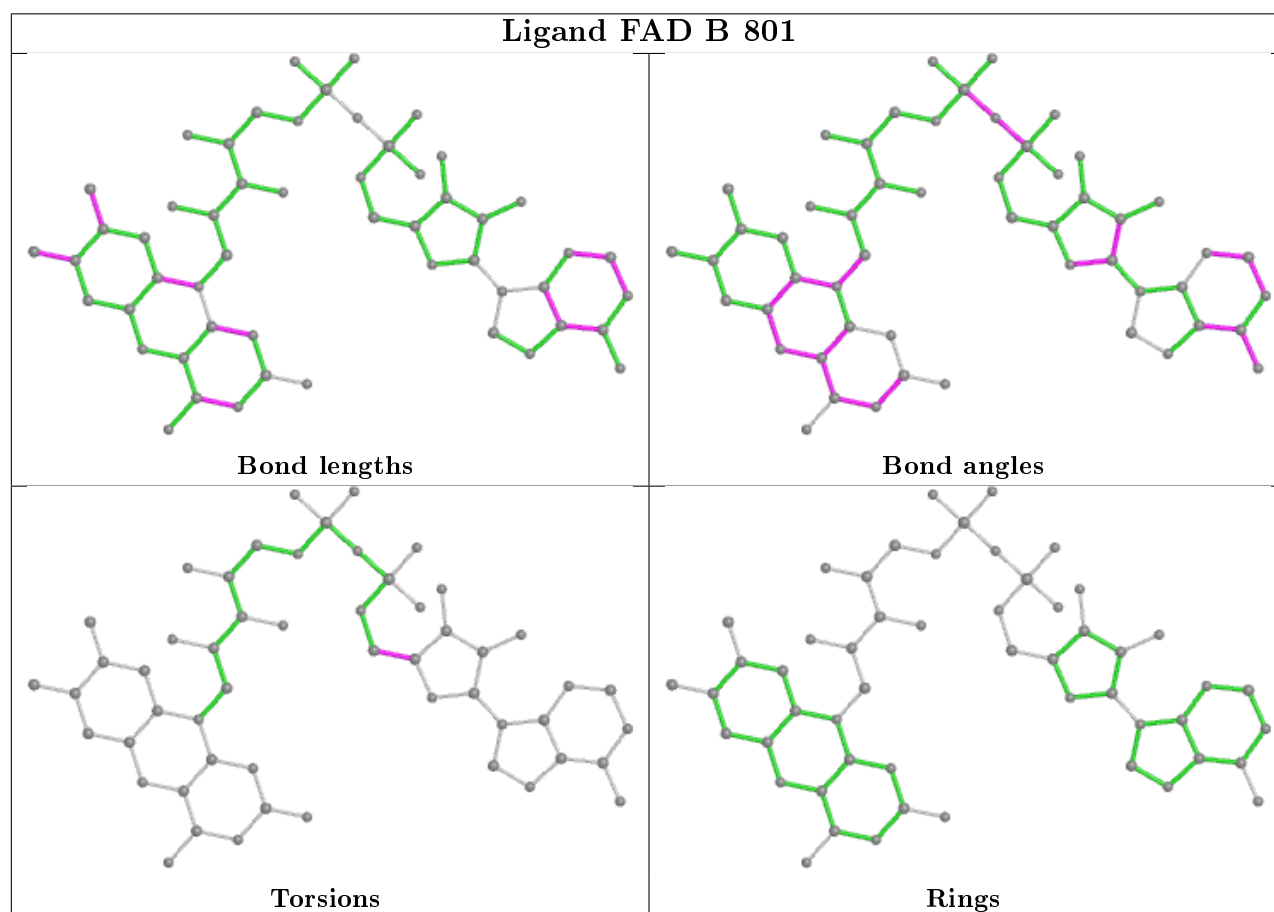
Mol	Chain	Res	Type	Atoms
3	A	802	PG4	C8-C7-O4-C6
3	D	802	PG4	O3-C5-C6-O4
3	A	802	PG4	O4-C7-C8-O5
3	C	802	PG4	O4-C7-C8-O5
3	A	802	PG4	C6-C5-O3-C4

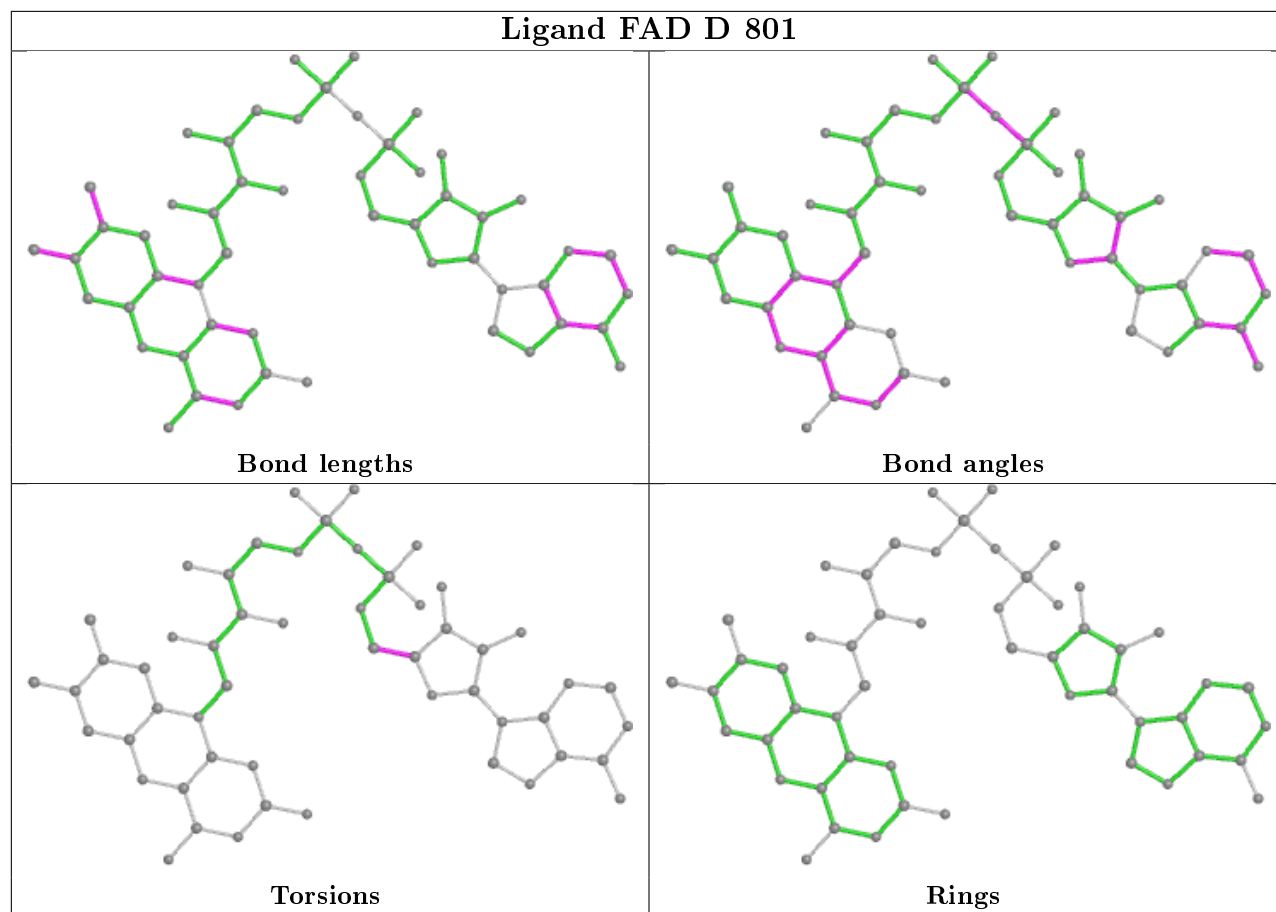
There are no ring outliers.

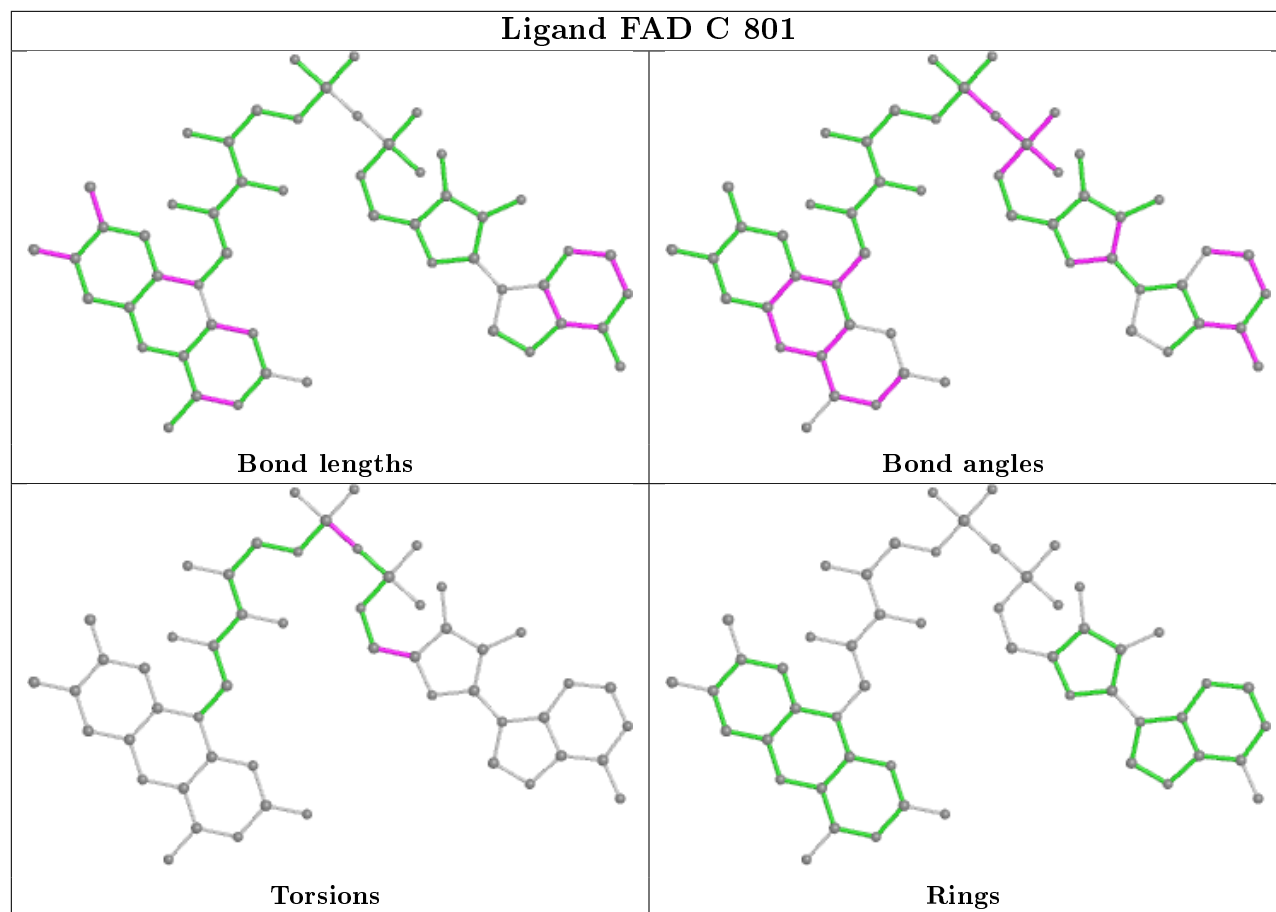
6 monomers are involved in 12 short contacts:

Mol	Chain	Res	Type	Clashes	Symm-Clashes
2	B	801	FAD	2	0
2	D	801	FAD	1	0
2	C	801	FAD	2	0
3	A	802	PG4	2	0
3	C	802	PG4	2	0
2	A	801	FAD	4	0

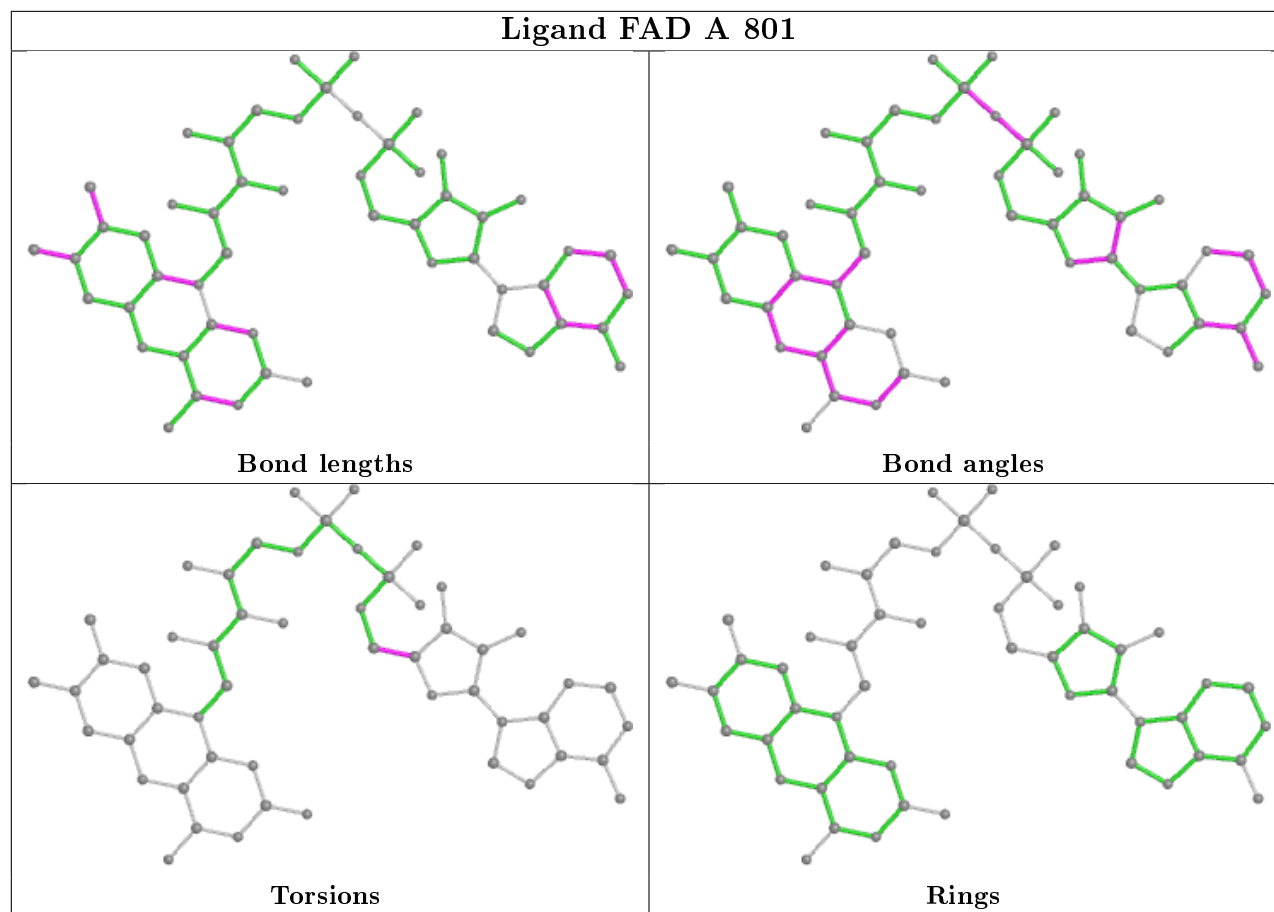
The following is a two-dimensional graphical depiction of Mogul quality analysis of bond lengths, bond angles, torsion angles, and ring geometry for all instances of the Ligand of Interest. In addition, ligands with molecular weight > 250 and outliers as shown on the validation Tables will also be included. For torsion angles, if less than 5% of the Mogul distribution of torsion angles is within 10 degrees of the torsion angle in question, then that torsion angle is considered an outlier. Any bond that is central to one or more torsion angles identified as an outlier by Mogul will be highlighted in the graph. For rings, the root-mean-square deviation (RMSD) between the ring in question and similar rings identified by Mogul is calculated over all ring torsion angles. If the average RMSD is greater than 60 degrees and the minimal RMSD between the ring in question and any Mogul-identified rings is also greater than 60 degrees, then that ring is considered an outlier. The outliers are highlighted in purple. The color gray indicates Mogul did not find sufficient equivalents in the CSD to analyse the geometry.











## 5.7 Other polymers [i](#)

There are no such residues in this entry.

## 5.8 Polymer linkage issues [i](#)

There are no chain breaks in this entry.

## 6 Fit of model and data [i](#)

### 6.1 Protein, DNA and RNA chains [i](#)

In the following table, the column labelled ‘#RSRZ> 2’ contains the number (and percentage) of RSRZ outliers, followed by percent RSRZ outliers for the chain as percentile scores relative to all X-ray entries and entries of similar resolution. The OWAB column contains the minimum, median, 95<sup>th</sup> percentile and maximum values of the occupancy-weighted average B-factor per residue. The column labelled ‘Q< 0.9’ lists the number of (and percentage) of residues with an average occupancy less than 0.9.

Mol	Chain	Analysed	<RSRZ>	#RSRZ>2	OWAB(Å <sup>2</sup> )	Q<0.9
1	A	494/516 (95%)	0.18	14 (2%) 53 51	18, 31, 53, 77	0
1	B	502/516 (97%)	0.23	17 (3%) 45 44	19, 31, 57, 80	0
1	C	488/516 (94%)	0.14	9 (1%) 68 66	18, 31, 51, 73	0
1	D	498/516 (96%)	0.22	11 (2%) 62 60	17, 30, 55, 82	0
All	All	1982/2064 (96%)	0.19	51 (2%) 56 54	17, 30, 54, 82	0

The worst 5 of 51 RSRZ outliers are listed below:

Mol	Chain	Res	Type	RSRZ
1	A	230	PRO	4.7
1	D	421	ILE	4.2
1	D	230	PRO	4.2
1	A	189	PHE	4.2
1	B	231	SER	4.2

### 6.2 Non-standard residues in protein, DNA, RNA chains [i](#)

There are no non-standard protein/DNA/RNA residues in this entry.

### 6.3 Carbohydrates [i](#)

There are no carbohydrates in this entry.

### 6.4 Ligands [i](#)

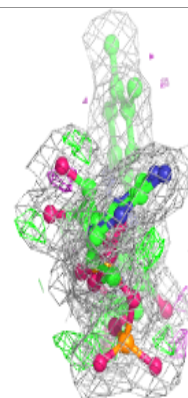
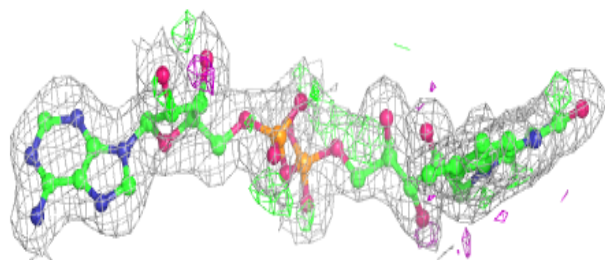
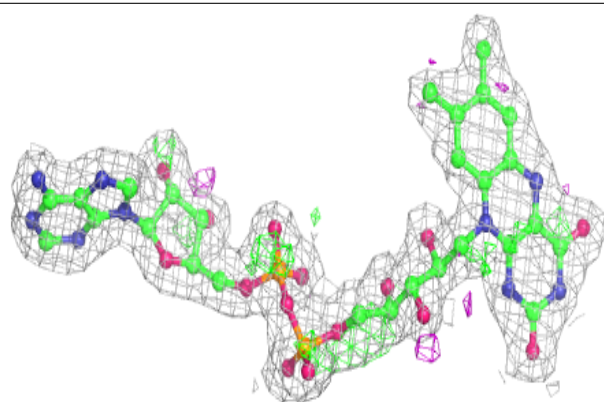
In the following table, the Atoms column lists the number of modelled atoms in the group and the number defined in the chemical component dictionary. The B-factors column lists the minimum, median, 95<sup>th</sup> percentile and maximum values of B factors of atoms in the group. The column labelled ‘Q< 0.9’ lists the number of atoms with occupancy less than 0.9.

Mol	Type	Chain	Res	Atoms	RSCC	RSR	B-factors( $\text{\AA}^2$ )	Q<0.9
3	PG4	B	802	11/13	0.86	0.14	31,38,45,47	0
3	PG4	A	802	13/13	0.88	0.18	31,37,46,47	0
3	PG4	D	802	11/13	0.88	0.18	30,37,43,47	0
3	PG4	C	802	13/13	0.88	0.16	29,37,46,64	0
2	FAD	B	801	53/53	0.96	0.13	18,21,25,26	0
2	FAD	D	801	53/53	0.96	0.13	15,20,25,25	0
2	FAD	A	801	53/53	0.97	0.11	15,20,23,26	0
2	FAD	C	801	53/53	0.97	0.11	14,21,25,26	0

The following is a graphical depiction of the model fit to experimental electron density of all instances of the Ligand of Interest. In addition, ligands with molecular weight > 250 and outliers as shown on the geometry validation Tables will also be included. Each fit is shown from different orientation to approximate a three-dimensional view.

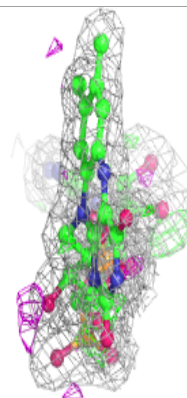
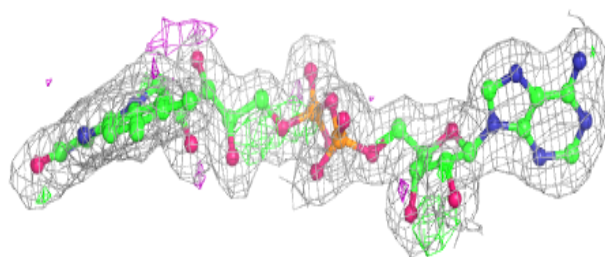
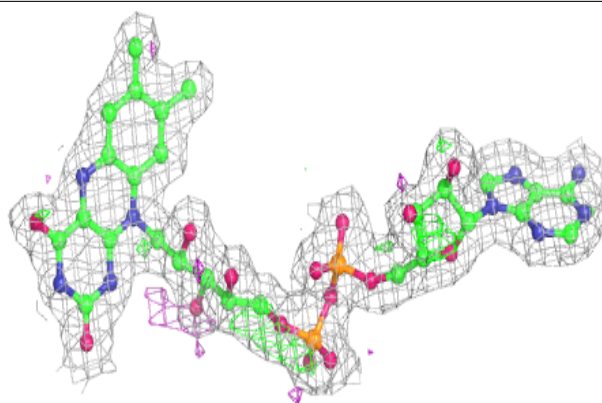
**Electron density around FAD B 801:**

2mF<sub>o</sub>-DF<sub>c</sub> (at 0.7 rmsd) in gray  
mF<sub>o</sub>-DF<sub>c</sub> (at 3 rmsd) in purple (negative)  
and green (positive)

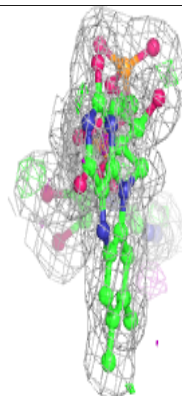
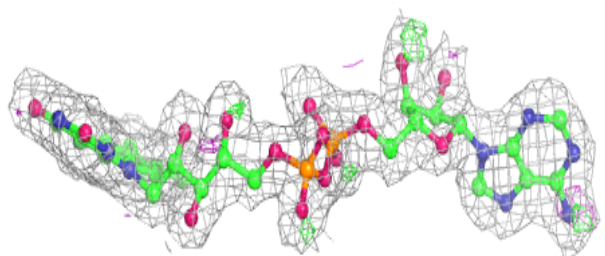
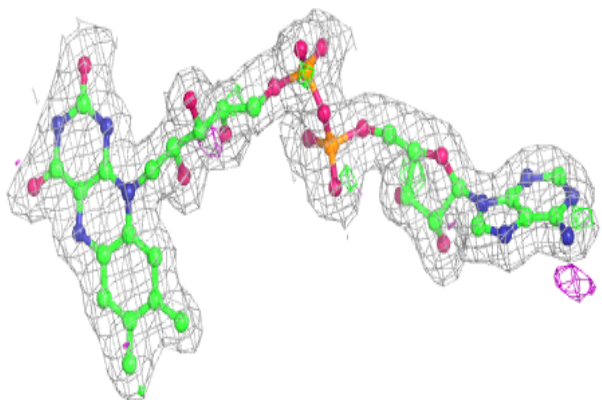


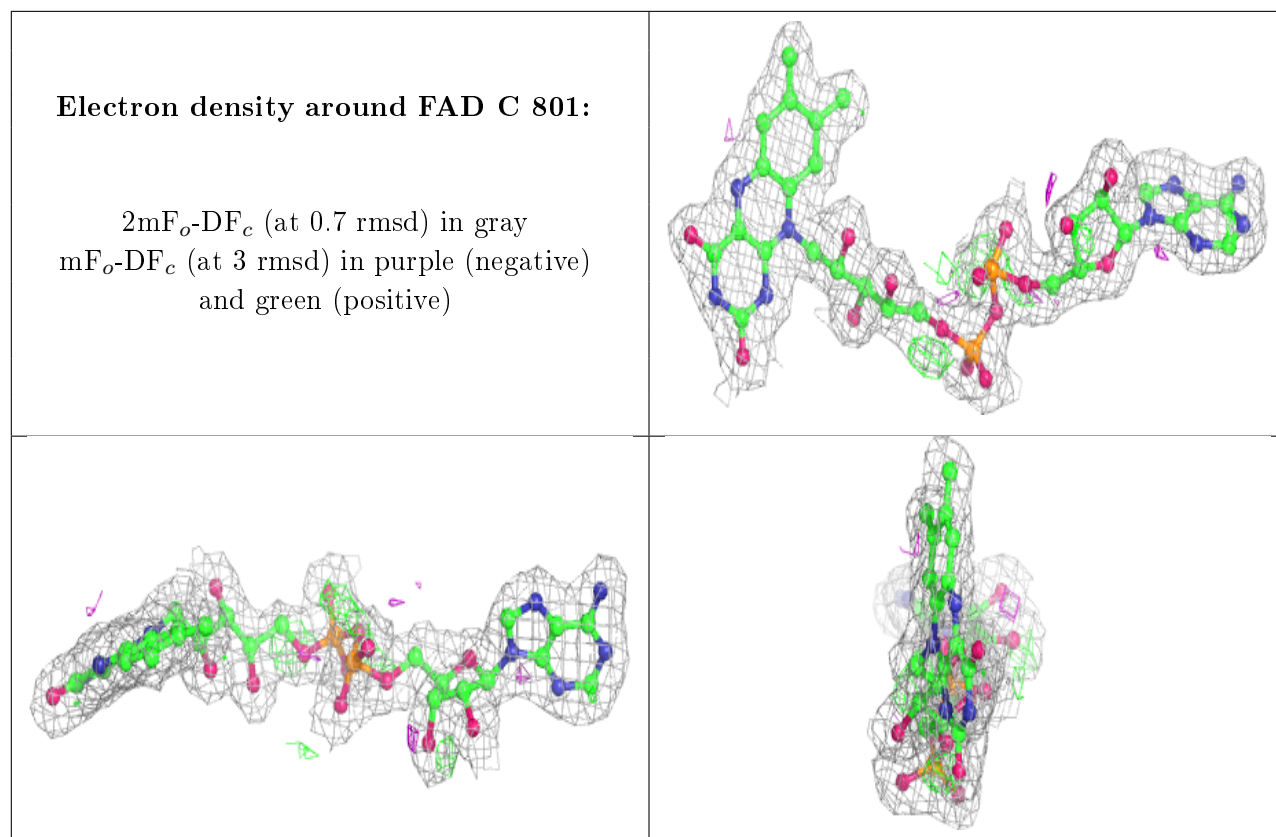
**Electron density around FAD D 801:**

$2mF_o-DF_c$  (at 0.7 rmsd) in gray  
 $mF_o-DF_c$  (at 3 rmsd) in purple (negative)  
and green (positive)

**Electron density around FAD A 801:**

$2mF_o-DF_c$  (at 0.7 rmsd) in gray  
 $mF_o-DF_c$  (at 3 rmsd) in purple (negative)  
and green (positive)





## 6.5 Other polymers [i](#)

There are no such residues in this entry.