



Full wwPDB X-ray Structure Validation Report ⓘ

May 16, 2020 – 08:58 am BST

PDB ID : 1GET
Title : ANATOMY OF AN ENGINEERED NAD-BINDING SITE
Authors : Mittl, P.R.E.; Schulz, G.E.
Deposited on : 1994-01-18
Resolution : 2.00 Å(reported)

This is a Full wwPDB X-ray Structure Validation Report for a publicly released PDB entry.

We welcome your comments at validation@mail.wwpdb.org

A user guide is available at

<https://www.wwpdb.org/validation/2017/XrayValidationReportHelp>

with specific help available everywhere you see the ⓘ symbol.

The following versions of software and data (see [references ⓘ](#)) were used in the production of this report:

MolProbity : 4.02b-467
Mogul : 1.8.5 (274361), CSD as541be (2020)
Xtriage (Phenix) : 1.13
EDS : 2.11
buster-report : 1.1.7 (2018)
Percentile statistics : 20191225.v01 (using entries in the PDB archive December 25th 2019)
Refmac : 5.8.0158
CCP4 : 7.0.044 (Gargrove)
Ideal geometry (proteins) : Engh & Huber (2001)
Ideal geometry (DNA, RNA) : Parkinson et al. (1996)
Validation Pipeline (wwPDB-VP) : 2.11

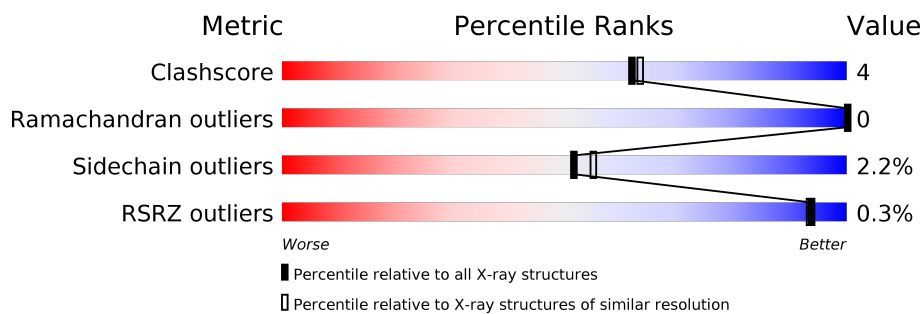
1 Overall quality at a glance

The following experimental techniques were used to determine the structure:

X-RAY DIFFRACTION



The reported resolution of this entry is 2.00 Å.

Percentile scores (ranging between 0-100) for global validation metrics of the entry are shown in the following graphic. The table shows the number of entries on which the scores are based.



Metric	Whole archive (#Entries)	Similar resolution (#Entries, resolution range(Å))
Clashscore	141614	9178 (2.00-2.00)
Ramachandran outliers	138981	9054 (2.00-2.00)
Sidechain outliers	138945	9053 (2.00-2.00)
RSRZ outliers	127900	7900 (2.00-2.00)

The table below summarises the geometric issues observed across the polymeric chains and their fit to the electron density. The red, orange, yellow and green segments on the lower bar indicate the fraction of residues that contain outliers for ≥ 3 , 2, 1 and 0 types of geometric quality criteria respectively. A grey segment represents the fraction of residues that are not modelled. The numeric value for each fraction is indicated below the corresponding segment, with a dot representing fractions $\leq 5\%$. The upper red bar (where present) indicates the fraction of residues that have poor fit to the electron density. The numeric value is given above the bar.

Mol	Chain	Length	Quality of chain
1	A	450	 81% 17% •
1	B	450	 87% 12% •

2 Entry composition i

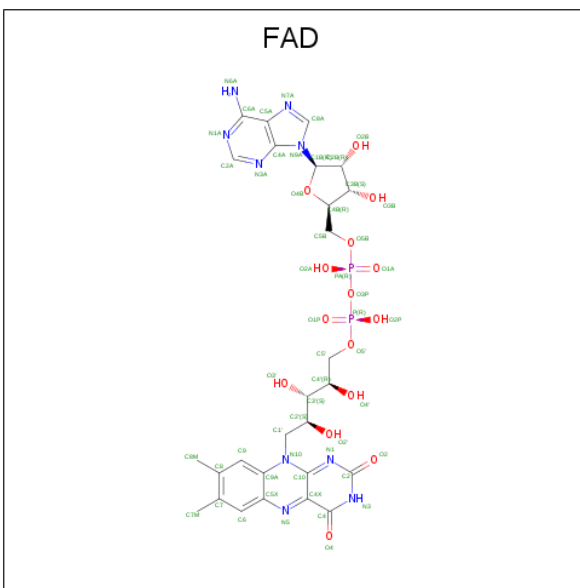
There are 4 unique types of molecules in this entry. The entry contains 7489 atoms, of which 0 are hydrogens and 0 are deuteriums.

In the tables below, the ZeroOcc column contains the number of atoms modelled with zero occupancy, the AltConf column contains the number of residues with at least one atom in alternate conformation and the Trace column contains the number of residues modelled with at most 2 atoms.

- Molecule 1 is a protein called GLUTATHIONE REDUCTASE.

Mol	Chain	Residues	Atoms					ZeroOcc	AltConf	Trace
1	A	448	Total 3415	C 2156	N 589	O 652	S 18	0	1	0
1	B	449	Total 3422	C 2160	N 590	O 654	S 18	0	1	0

- Molecule 2 is FLAVIN-ADENINE DINUCLEOTIDE (three-letter code: FAD) (formula: $\text{C}_{27}\text{H}_{33}\text{N}_9\text{O}_{15}\text{P}_2$).



Mol	Chain	Residues	Atoms					ZeroOcc	AltConf
2	A	1	Total 53	C 27	N 9	O 15	P 2	0	0
2	B	1	Total 53	C 27	N 9	O 15	P 2	0	0

- Molecule 3 is NADP NICOTINAMIDE-ADENINE-DINUCLEOTIDE PHOSPHATE (three-letter code: NAP) (formula: $\text{C}_{21}\text{H}_{28}\text{N}_7\text{O}_{17}\text{P}_3$).



Mol	Chain	Residues	Atoms					ZeroOcc	AltConf
3	A	1	Total 48	C 21	N 7	O 17	P 3	0	0
3	B	1	Total 48	C 21	N 7	O 17	P 3	0	0

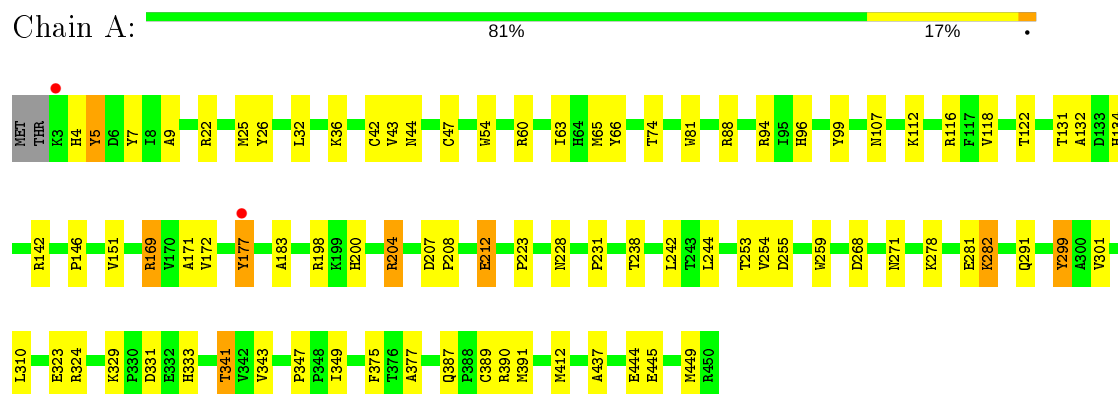
- Molecule 4 is water.

Mol	Chain	Residues	Atoms		ZeroOcc	AltConf
4	A	214	Total	O	0	0
			214	214		
4	B	236	Total	O	0	0
			236	236		

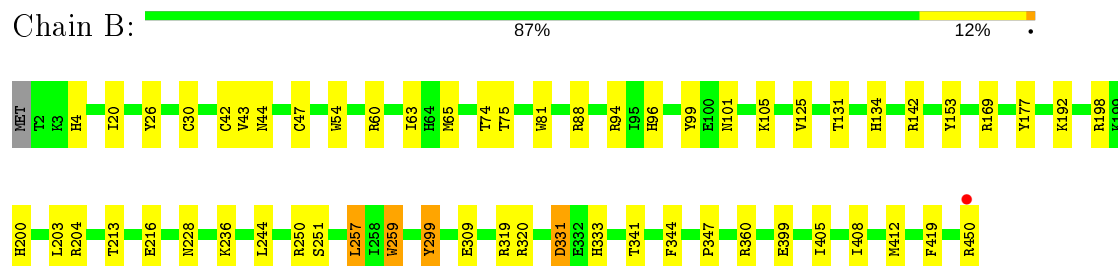
3 Residue-property plots

These plots are drawn for all protein, RNA and DNA chains in the entry. The first graphic for a chain summarises the proportions of the various outlier classes displayed in the second graphic. The second graphic shows the sequence view annotated by issues in geometry and electron density. Residues are color-coded according to the number of geometric quality criteria for which they contain at least one outlier: green = 0, yellow = 1, orange = 2 and red = 3 or more. A red dot above a residue indicates a poor fit to the electron density ($RSRZ > 2$). Stretches of 2 or more consecutive residues without any outlier are shown as a green connector. Residues present in the sample, but not in the model, are shown in grey.

• Molecule 1: GLUTATHIONE REDUCTASE



• Molecule 1: GLUTATHIONE REDUCTASE



4 Data and refinement statistics

Property	Value	Source
Space group	P 1 1 21	Depositor
Cell constants a, b, c, α , β , γ	120.50 Å 74.00 Å 60.80 Å 90.00° 90.00° 82.50°	Depositor
Resolution (Å)	7.00 – 2.00 20.13 – 2.00	Depositor EDS
% Data completeness (in resolution range)	(Not available) (7.00-2.00) 81.3 (20.13-2.00)	Depositor EDS
R_{merge}	(Not available)	Depositor
R_{sym}	(Not available)	Depositor
$\langle I/\sigma(I) \rangle$	-	Xtriage
Refinement program	X-PLOR	Depositor
R, R_{free}	0.208 , (Not available) 0.178 , (Not available)	Depositor DCC
R_{free} test set	No test flags present.	wwPDB-VP
Wilson B-factor (Å ²)	15.3	Xtriage
Anisotropy	0.334	Xtriage
Bulk solvent k_{sol} (e/Å ³), B_{sol} (Å ²)	0.32 , 71.8	EDS
L-test for twinning ¹	$\langle L \rangle = 0.38$, $\langle L^2 \rangle = 0.21$	Xtriage
Estimated twinning fraction	No twinning to report.	Xtriage
F_o, F_c correlation	0.95	EDS
Total number of atoms	7489	wwPDB-VP
Average B, all atoms (Å ²)	20.0	wwPDB-VP

Xtriage's analysis on translational NCS is as follows: *The analyses of the Patterson function reveals a significant off-origin peak that is 27.13 % of the origin peak, indicating pseudo-translational symmetry. The chance of finding a peak of this or larger height randomly in a structure without pseudo-translational symmetry is equal to 2.3236e-03.*

¹Theoretical values of $\langle |L| \rangle$, $\langle L^2 \rangle$ for acentric reflections are 0.5, 0.333 respectively for untwinned datasets, and 0.375, 0.2 for perfectly twinned datasets.

5 Model quality

5.1 Standard geometry

Bond lengths and bond angles in the following residue types are not validated in this section: NAP, FAD

The Z score for a bond length (or angle) is the number of standard deviations the observed value is removed from the expected value. A bond length (or angle) with $|Z| > 5$ is considered an outlier worth inspection. RMSZ is the root-mean-square of all Z scores of the bond lengths (or angles).

Mol	Chain	Bond lengths		Bond angles	
		RMSZ	$\# Z > 5$	RMSZ	$\# Z > 5$
1	A	0.81	0/3490	1.44	31/4737 (0.7%)
1	B	0.86	1/3497 (0.0%)	1.44	29/4747 (0.6%)
All	All	0.84	1/6987 (0.0%)	1.44	60/9484 (0.6%)

All (1) bond length outliers are listed below:

Mol	Chain	Res	Type	Atoms	Z	Observed(Å)	Ideal(Å)
1	B	412	MET	CA-CB	-5.34	1.42	1.53

All (60) bond angle outliers are listed below:

Mol	Chain	Res	Type	Atoms	Z	Observed(°)	Ideal(°)
1	A	94	ARG	NE-CZ-NH2	-18.39	111.11	120.30
1	B	94	ARG	NE-CZ-NH2	-13.76	113.42	120.30
1	A	94	ARG	NE-CZ-NH1	12.30	126.45	120.30
1	A	259	TRP	CD1-CG-CD2	8.98	113.49	106.30
1	A	169	ARG	NE-CZ-NH2	-8.72	115.94	120.30
1	B	142	ARG	NE-CZ-NH2	-8.08	116.26	120.30
1	B	250	ARG	NE-CZ-NH2	-7.98	116.31	120.30
1	A	54	TRP	CD1-CG-CD2	7.92	112.63	106.30
1	B	81	TRP	CD1-CG-CD2	7.84	112.57	106.30
1	B	60	ARG	NE-CZ-NH1	7.81	124.20	120.30
1	A	204	ARG	NE-CZ-NH1	7.79	124.20	120.30
1	B	259	TRP	CD1-CG-CD2	7.75	112.50	106.30
1	B	259	TRP	CE2-CD2-CG	-7.58	101.24	107.30
1	A	412	MET	CG-SD-CE	7.46	112.14	100.20
1	B	94	ARG	NE-CZ-NH1	7.25	123.93	120.30
1	A	259	TRP	CE2-CD2-CG	-7.23	101.52	107.30
1	A	81	TRP	CD1-CG-CD2	7.21	112.06	106.30
1	A	169	ARG	NE-CZ-NH1	7.17	123.89	120.30

Continued on next page...

Continued from previous page...

Mol	Chain	Res	Type	Atoms	Z	Observed(°)	Ideal(°)
1	B	54	TRP	CD1-CG-CD2	7.09	111.97	106.30
1	B	320	ARG	NE-CZ-NH1	6.98	123.79	120.30
1	B	81	TRP	CE2-CD2-CG	-6.94	101.75	107.30
1	A	324	ARG	NE-CZ-NH1	6.93	123.76	120.30
1	B	88	ARG	NE-CZ-NH2	-6.92	116.84	120.30
1	A	390	ARG	NE-CZ-NH1	6.79	123.70	120.30
1	A	212	GLU	CA-CB-CG	6.75	128.25	113.40
1	B	299	TYR	CB-CG-CD2	-6.61	117.03	121.00
1	B	169	ARG	NE-CZ-NH2	-6.61	117.00	120.30
1	A	81	TRP	CE2-CD2-CG	-6.60	102.02	107.30
1	A	5	TYR	CB-CG-CD1	-6.58	117.06	121.00
1	A	54	TRP	CE2-CD2-CG	-6.51	102.09	107.30
1	B	54	TRP	CE2-CD2-CG	-6.51	102.09	107.30
1	B	204	ARG	NE-CZ-NH1	6.26	123.43	120.30
1	A	66	TYR	CB-CG-CD2	-6.23	117.26	121.00
1	B	169	ARG	NE-CZ-NH1	6.19	123.40	120.30
1	A	172	VAL	CG1-CB-CG2	-6.15	101.06	110.90
1	A	94	ARG	CG-CD-NE	-6.14	98.90	111.80
1	B	360	ARG	NE-CZ-NH1	5.95	123.27	120.30
1	B	319	ARG	NE-CZ-NH2	-5.88	117.36	120.30
1	A	60	ARG	NE-CZ-NH1	5.86	123.23	120.30
1	B	450	ARG	NE-CZ-NH1	5.80	123.20	120.30
1	A	142	ARG	NE-CZ-NH2	-5.78	117.41	120.30
1	B	250	ARG	NE-CZ-NH1	5.67	123.14	120.30
1	A	259	TRP	CG-CD1-NE1	-5.60	104.50	110.10
1	B	412	MET	CG-SD-CE	5.60	109.16	100.20
1	B	125	VAL	CB-CA-C	-5.54	100.88	111.40
1	A	391	MET	CG-SD-CE	5.52	109.03	100.20
1	A	299	TYR	CG-CD1-CE1	-5.52	116.89	121.30
1	A	116	ARG	NE-CZ-NH1	5.43	123.02	120.30
1	B	259	TRP	CG-CD2-CE3	5.42	138.78	133.90
1	A	116	ARG	NE-CZ-NH2	-5.41	117.59	120.30
1	A	60	ARG	NE-CZ-NH2	-5.35	117.63	120.30
1	B	81	TRP	CG-CD2-CE3	5.33	138.69	133.90
1	A	268	ASP	CA-C-N	5.31	128.88	117.20
1	A	26	TYR	CB-CG-CD1	-5.26	117.84	121.00
1	B	177	TYR	CB-CG-CD2	-5.25	117.85	121.00
1	A	177	TYR	CB-CG-CD2	-5.14	117.91	121.00
1	B	26	TYR	CB-CG-CD1	-5.12	117.92	121.00
1	B	94	ARG	CG-CD-NE	-5.09	101.12	111.80
1	A	88	ARG	NE-CZ-NH1	5.07	122.83	120.30
1	B	450	ARG	NE-CZ-NH2	-5.06	117.77	120.30

There are no chirality outliers.

There are no planarity outliers.

5.2 Too-close contacts

In the following table, the Non-H and H(model) columns list the number of non-hydrogen atoms and hydrogen atoms in the chain respectively. The H(added) column lists the number of hydrogen atoms added and optimized by MolProbity. The Clashes column lists the number of clashes within the asymmetric unit, whereas Symm-Clashes lists symmetry related clashes.

Mol	Chain	Non-H	H(model)	H(added)	Clashes	Symm-Clashes
1	A	3415	0	3377	39	0
1	B	3422	0	3384	24	0
2	A	53	0	31	0	0
2	B	53	0	31	1	0
3	A	48	0	25	2	0
3	B	48	0	25	1	0
4	A	214	0	0	3	0
4	B	236	0	0	2	0
All	All	7489	0	6873	61	0

The all-atom clashscore is defined as the number of clashes found per 1000 atoms (including hydrogen atoms). The all-atom clashscore for this structure is 4.

All (61) close contacts within the same asymmetric unit are listed below, sorted by their clash magnitude.

Atom-1	Atom-2	Interatomic distance (Å)	Clash overlap (Å)
1:A:74:THR:HB	4:A:612:HOH:O	1.83	0.79
1:A:74:THR:HG21	1:B:63:ILE:HD13	1.67	0.76
1:A:63:ILE:HG12	1:B:63:ILE:HG12	1.67	0.75
1:A:4:HIS:HD2	1:A:131:THR:HG23	1.52	0.73
1:B:4:HIS:HD2	1:B:131:THR:HG23	1.54	0.71
4:A:612:HOH:O	1:B:74:THR:HB	1.95	0.65
1:A:377:ALA:HB2	1:A:389[A]:CYS:SG	2.37	0.64
1:A:177:TYR:OH	1:A:341:THR:HG21	2.01	0.61
1:A:63:ILE:HD13	1:B:74:THR:HG21	1.82	0.60
1:A:281:GLU:HB2	1:A:282:LYS:HE2	1.84	0.59
1:A:42:CYS:HG	1:A:47:CYS:HG	1.48	0.59
1:B:4:HIS:CD2	1:B:131:THR:HG23	2.36	0.58
1:A:437:ALA:HB1	1:A:444:GLU:HB2	1.87	0.56
1:B:101:ASN:OD1	1:B:105:LYS:HE2	2.07	0.55
1:A:343:VAL:HB	1:A:349:ILE:HB	1.89	0.55

Continued on next page...

Continued from previous page...

Atom-1	Atom-2	Interatomic distance (Å)	Clash overlap (Å)
1:A:4:HIS:CD2	1:A:131:THR:HG23	2.39	0.53
1:A:231:PRO:HB3	1:A:244:LEU:HD11	1.91	0.52
1:A:134:HIS:HB3	1:A:299:TYR:HE2	1.75	0.52
1:A:43:VAL:HG21	1:A:99:TYR:HE2	1.75	0.52
1:A:96:HIS:HD2	4:A:628:HOH:O	1.92	0.52
1:B:198:ARG:O	1:B:228:ASN:HA	2.11	0.50
1:A:169:ARG:HD3	1:A:255:ASP:OD2	2.10	0.50
1:A:146:PRO:O	1:A:151:VAL:HG21	2.12	0.49
1:B:44:ASN:OD1	1:B:96:HIS:HE1	1.94	0.49
1:B:153:TYR:CE1	1:B:236:LYS:HD2	2.47	0.49
1:A:9:ALA:HB3	1:A:32:LEU:HD12	1.94	0.49
1:A:291:GLN:HG3	1:A:301:VAL:HG12	1.95	0.48
1:A:198:ARG:O	1:A:228:ASN:HA	2.14	0.47
1:B:344:PHE:HE1	4:B:651:HOH:O	1.97	0.47
1:B:42:CYS:HG	1:B:47:CYS:HG	1.61	0.47
1:A:331:ASP:O	1:A:333:HIS:HD2	1.97	0.46
1:B:331:ASP:O	1:B:333:HIS:HD2	1.98	0.46
1:B:347:PRO:HG2	1:B:408:ILE:HG12	1.98	0.46
1:B:257:LEU:HD21	1:B:259:TRP:CZ2	2.52	0.45
1:A:200:HIS:CE1	1:A:204:ARG:HG2	2.52	0.45
1:A:183:ALA:HB1	1:A:223:PRO:HG3	1.99	0.45
1:A:118:VAL:HB	1:A:122:THR:HB	1.99	0.45
1:B:134:HIS:HB3	1:B:299:TYR:HE2	1.82	0.45
1:A:36:LYS:O	1:A:112:LYS:HE2	2.16	0.45
1:A:171:ALA:HB2	1:A:254:VAL:HG11	1.99	0.45
1:A:323:GLU:HB3	1:A:329:LYS:HD2	1.98	0.45
1:B:44:ASN:OD1	1:B:96:HIS:CE1	2.70	0.44
1:A:375:PHE:CZ	1:A:445:GLU:HG3	2.52	0.44
1:B:20:ILE:HD11	1:B:30:CYS:HB3	2.00	0.43
2:B:451:FAD:H1'1	2:B:451:FAD:H9	1.81	0.43
1:A:310:LEU:HD23	3:A:452:NAP:H2N	2.00	0.43
1:A:44:ASN:OD1	1:A:96:HIS:HE1	2.01	0.43
1:A:347:PRO:HB3	1:A:387:GLN:OE1	2.18	0.43
1:A:22:ARG:O	1:A:25:MET:HB2	2.18	0.42
1:A:7:TYR:HD1	1:A:134:HIS:HB2	1.85	0.42
1:B:244:LEU:O	1:B:251:SER:HA	2.20	0.41
1:B:309:GLU:O	3:B:452:NAP:H1D	2.20	0.41
1:B:43:VAL:HG21	1:B:99:TYR:HE2	1.85	0.41
1:A:208:PRO:O	1:A:212:GLU:HG3	2.21	0.41
1:B:200:HIS:HE1	4:B:584:HOH:O	2.03	0.41
1:A:242:LEU:O	1:A:253:THR:HA	2.19	0.41

Continued on next page...

Continued from previous page...

Atom-1	Atom-2	Interatomic distance (Å)	Clash overlap (Å)
1:A:5:TYR:O	1:A:132:ALA:HA	2.20	0.41
1:A:207:ASP:HA	1:A:208:PRO:HD3	1.86	0.40
1:A:204:ARG:HD3	3:A:452:NAP:O1X	2.21	0.40
1:B:405:ILE:HD13	1:B:419:PHE:HB3	2.03	0.40
1:B:213:THR:O	1:B:216:GLU:HB2	2.21	0.40

There are no symmetry-related clashes.

5.3 Torsion angles [i](#)

5.3.1 Protein backbone [i](#)

In the following table, the Percentiles column shows the percent Ramachandran outliers of the chain as a percentile score with respect to all X-ray entries followed by that with respect to entries of similar resolution.

The Analysed column shows the number of residues for which the backbone conformation was analysed, and the total number of residues.

Mol	Chain	Analysed	Favoured	Allowed	Outliers	Percentiles	
1	A	447/450 (99%)	427 (96%)	20 (4%)	0	100	100
1	B	448/450 (100%)	431 (96%)	17 (4%)	0	100	100
All	All	895/900 (99%)	858 (96%)	37 (4%)	0	100	100

There are no Ramachandran outliers to report.

5.3.2 Protein sidechains [i](#)

In the following table, the Percentiles column shows the percent sidechain outliers of the chain as a percentile score with respect to all X-ray entries followed by that with respect to entries of similar resolution.

The Analysed column shows the number of residues for which the sidechain conformation was analysed, and the total number of residues.

Mol	Chain	Analysed	Rotameric	Outliers	Percentiles	
1	A	361/362 (100%)	353 (98%)	8 (2%)	52	55
1	B	362/362 (100%)	354 (98%)	8 (2%)	52	55
All	All	723/724 (100%)	707 (98%)	16 (2%)	52	55

All (16) residues with a non-rotameric sidechain are listed below:

Mol	Chain	Res	Type
1	A	65	MET
1	A	107	ASN
1	A	238	THR
1	A	271	ASN
1	A	278	LYS
1	A	282	LYS
1	A	341	THR
1	A	449	MET
1	B	65	MET
1	B	75	THR
1	B	192	LYS
1	B	203	LEU
1	B	257	LEU
1	B	331	ASP
1	B	341	THR
1	B	399	GLU

Some sidechains can be flipped to improve hydrogen bonding and reduce clashes. All (11) such sidechains are listed below:

Mol	Chain	Res	Type
1	A	4	HIS
1	A	44	ASN
1	A	96	HIS
1	A	237	ASN
1	A	333	HIS
1	A	362	GLN
1	B	4	HIS
1	B	77	ASN
1	B	96	HIS
1	B	237	ASN
1	B	333	HIS

5.3.3 RNA ⓘ

There are no RNA molecules in this entry.

5.4 Non-standard residues in protein, DNA, RNA chains ⓘ

There are no non-standard protein/DNA/RNA residues in this entry.

5.5 Carbohydrates [i](#)

There are no carbohydrates in this entry.

5.6 Ligand geometry [i](#)

4 ligands are modelled in this entry.

In the following table, the Counts columns list the number of bonds (or angles) for which Mogul statistics could be retrieved, the number of bonds (or angles) that are observed in the model and the number of bonds (or angles) that are defined in the Chemical Component Dictionary. The Link column lists molecule types, if any, to which the group is linked. The Z score for a bond length (or angle) is the number of standard deviations the observed value is removed from the expected value. A bond length (or angle) with $|Z| > 2$ is considered an outlier worth inspection. RMSZ is the root-mean-square of all Z scores of the bond lengths (or angles).

Mol	Type	Chain	Res	Link	Bond lengths			Bond angles		
					Counts	RMSZ	# $ Z > 2$	Counts	RMSZ	# $ Z > 2$
3	NAP	B	452	-	45,52,52	1.11	3 (6%)	56,80,80	1.35	6 (10%)
2	FAD	B	451	-	51,58,58	1.33	5 (9%)	60,89,89	1.57	7 (11%)
2	FAD	A	451	-	51,58,58	1.35	6 (11%)	60,89,89	1.52	7 (11%)
3	NAP	A	452	-	45,52,52	1.27	4 (8%)	56,80,80	1.36	5 (8%)

In the following table, the Chirals column lists the number of chiral outliers, the number of chiral centers analysed, the number of these observed in the model and the number defined in the Chemical Component Dictionary. Similar counts are reported in the Torsion and Rings columns. '-' means no outliers of that kind were identified.

Mol	Type	Chain	Res	Link	Chirals	Torsions	Rings
3	NAP	B	452	-	-	4/31/67/67	0/5/5/5
2	FAD	B	451	-	-	4/30/50/50	0/6/6/6
2	FAD	A	451	-	-	3/30/50/50	0/6/6/6
3	NAP	A	452	-	-	5/31/67/67	0/5/5/5

All (18) bond length outliers are listed below:

Mol	Chain	Res	Type	Atoms	Z	Observed(Å)	Ideal(Å)
3	A	452	NAP	C2N-N1N	4.42	1.40	1.35
3	B	452	NAP	C2N-N1N	3.96	1.39	1.35
3	A	452	NAP	O4D-C1D	3.74	1.46	1.41
2	A	451	FAD	C4-C4X	3.58	1.47	1.41
2	A	451	FAD	C2B-C1B	-3.53	1.48	1.53
2	B	451	FAD	C4-N3	3.51	1.39	1.33

Continued on next page...

Continued from previous page...

Mol	Chain	Res	Type	Atoms	Z	Observed(Å)	Ideal(Å)
2	B	451	FAD	C10-N1	3.09	1.37	1.33
2	B	451	FAD	C4-C4X	3.06	1.46	1.41
2	A	451	FAD	C4-N3	2.83	1.38	1.33
2	B	451	FAD	C4X-N5	2.80	1.37	1.33
3	A	452	NAP	C3N-C7N	2.66	1.54	1.50
3	A	452	NAP	O4B-C1B	2.62	1.44	1.41
3	B	452	NAP	O4D-C1D	2.47	1.44	1.41
2	A	451	FAD	C4X-N5	2.42	1.36	1.33
2	A	451	FAD	C10-N1	2.37	1.36	1.33
2	A	451	FAD	C4'-C3'	-2.22	1.49	1.53
2	B	451	FAD	C2B-C3B	2.04	1.58	1.53
3	B	452	NAP	C3N-C7N	2.03	1.53	1.50

All (25) bond angle outliers are listed below:

Mol	Chain	Res	Type	Atoms	Z	Observed(°)	Ideal(°)
2	B	451	FAD	C4-N3-C2	7.63	121.58	115.14
2	A	451	FAD	C4-N3-C2	6.91	120.97	115.14
2	B	451	FAD	C4X-C4-N3	-4.80	116.87	123.43
2	A	451	FAD	C4X-C4-N3	-4.70	117.00	123.43
3	A	452	NAP	C6N-N1N-C2N	-4.44	117.93	121.97
3	B	452	NAP	C4A-C5A-N7A	3.93	113.50	109.40
3	A	452	NAP	C4A-C5A-N7A	3.89	113.46	109.40
3	B	452	NAP	N3A-C2A-N1A	-3.85	122.66	128.68
3	A	452	NAP	N3A-C2A-N1A	-3.76	122.80	128.68
3	B	452	NAP	C6N-N1N-C2N	-3.46	118.82	121.97
2	A	451	FAD	C6-C5X-N5	-2.78	115.99	119.05
3	A	452	NAP	C1B-N9A-C4A	-2.64	122.00	126.64
2	A	451	FAD	O4B-C1B-C2B	-2.64	103.07	106.93
2	A	451	FAD	C1'-N10-C9A	2.53	120.28	118.29
3	B	452	NAP	O7N-C7N-C3N	2.44	122.55	119.63
2	B	451	FAD	C1'-N10-C10	2.41	120.57	118.41
3	B	452	NAP	C3D-C2D-C1D	2.37	104.55	100.98
2	A	451	FAD	C4X-N5-C5X	2.23	119.00	116.77
2	B	451	FAD	O2P-P-O1P	2.22	123.21	112.24
2	A	451	FAD	C10-C4X-N5	-2.19	119.75	121.26
3	A	452	NAP	O2B-P2B-O1X	-2.17	101.01	109.39
2	B	451	FAD	O4'-C4'-C3'	2.09	114.19	109.10
2	B	451	FAD	C4X-N5-C5X	2.09	118.86	116.77
2	B	451	FAD	C6-C5X-N5	-2.08	116.76	119.05
3	B	452	NAP	O2B-P2B-O1X	-2.04	101.50	109.39

There are no chirality outliers.

All (16) torsion outliers are listed below:

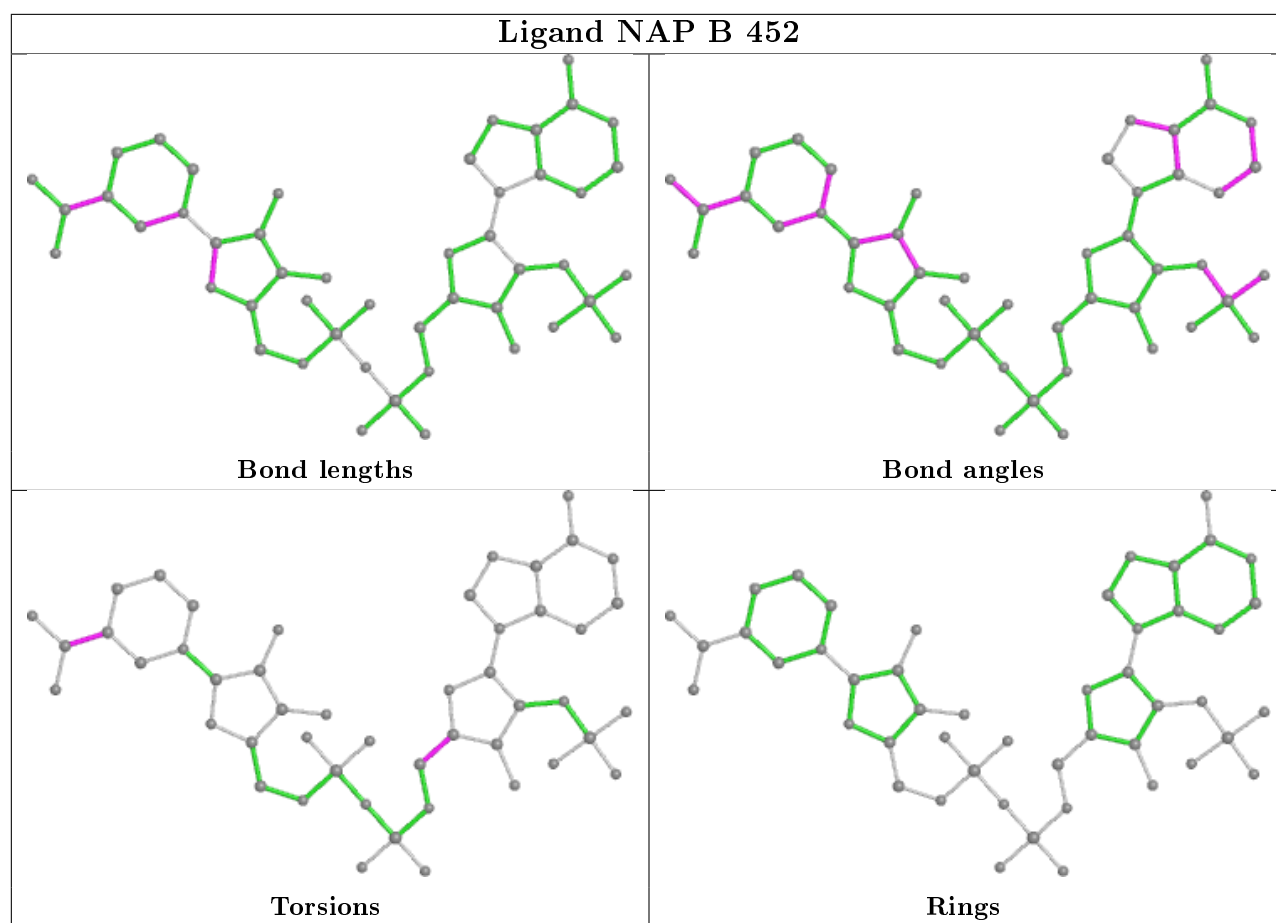
Mol	Chain	Res	Type	Atoms
2	B	451	FAD	PA-O3P-P-O5'
3	A	452	NAP	O4B-C4B-C5B-O5B
3	A	452	NAP	C5D-O5D-PN-O3
3	A	452	NAP	C5D-O5D-PN-O1N
3	A	452	NAP	C5D-O5D-PN-O2N
3	A	452	NAP	C3B-C4B-C5B-O5B
2	A	451	FAD	O4B-C4B-C5B-O5B
2	B	451	FAD	P-O3P-PA-O1A
2	A	451	FAD	PA-O3P-P-O5'
3	B	452	NAP	C2N-C3N-C7N-O7N
3	B	452	NAP	O4B-C4B-C5B-O5B
3	B	452	NAP	C2N-C3N-C7N-N7N
3	B	452	NAP	C3B-C4B-C5B-O5B
2	A	451	FAD	C3B-C4B-C5B-O5B
2	B	451	FAD	O4B-C4B-C5B-O5B
2	B	451	FAD	P-O3P-PA-O2A

There are no ring outliers.

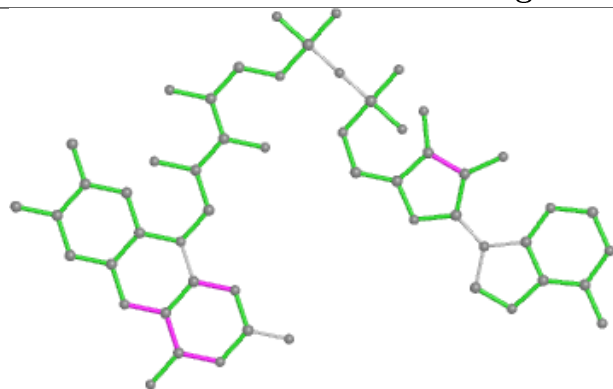
3 monomers are involved in 4 short contacts:

Mol	Chain	Res	Type	Clashes	Symm-Clashes
3	B	452	NAP	1	0
2	B	451	FAD	1	0
3	A	452	NAP	2	0

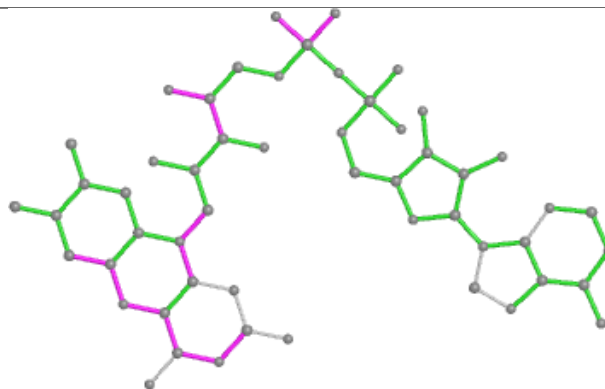
The following is a two-dimensional graphical depiction of Mogul quality analysis of bond lengths, bond angles, torsion angles, and ring geometry for all instances of the Ligand of Interest. In addition, ligands with molecular weight > 250 and outliers as shown on the validation Tables will also be included. For torsion angles, if less than 5% of the Mogul distribution of torsion angles is within 10 degrees of the torsion angle in question, then that torsion angle is considered an outlier. Any bond that is central to one or more torsion angles identified as an outlier by Mogul will be highlighted in the graph. For rings, the root-mean-square deviation (RMSD) between the ring in question and similar rings identified by Mogul is calculated over all ring torsion angles. If the average RMSD is greater than 60 degrees and the minimal RMSD between the ring in question and any Mogul-identified rings is also greater than 60 degrees, then that ring is considered an outlier. The outliers are highlighted in purple. The color gray indicates Mogul did not find sufficient equivalents in the CSD to analyse the geometry.



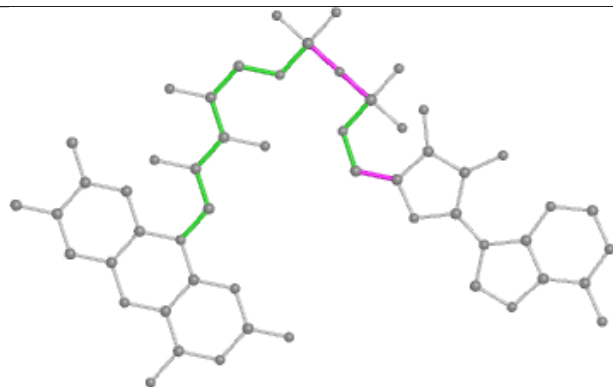
Ligand FAD B 451



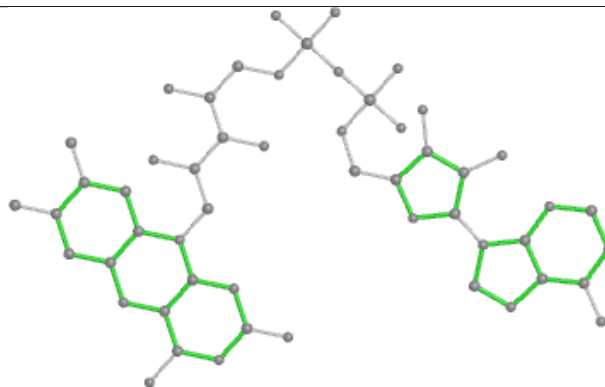
Bond lengths



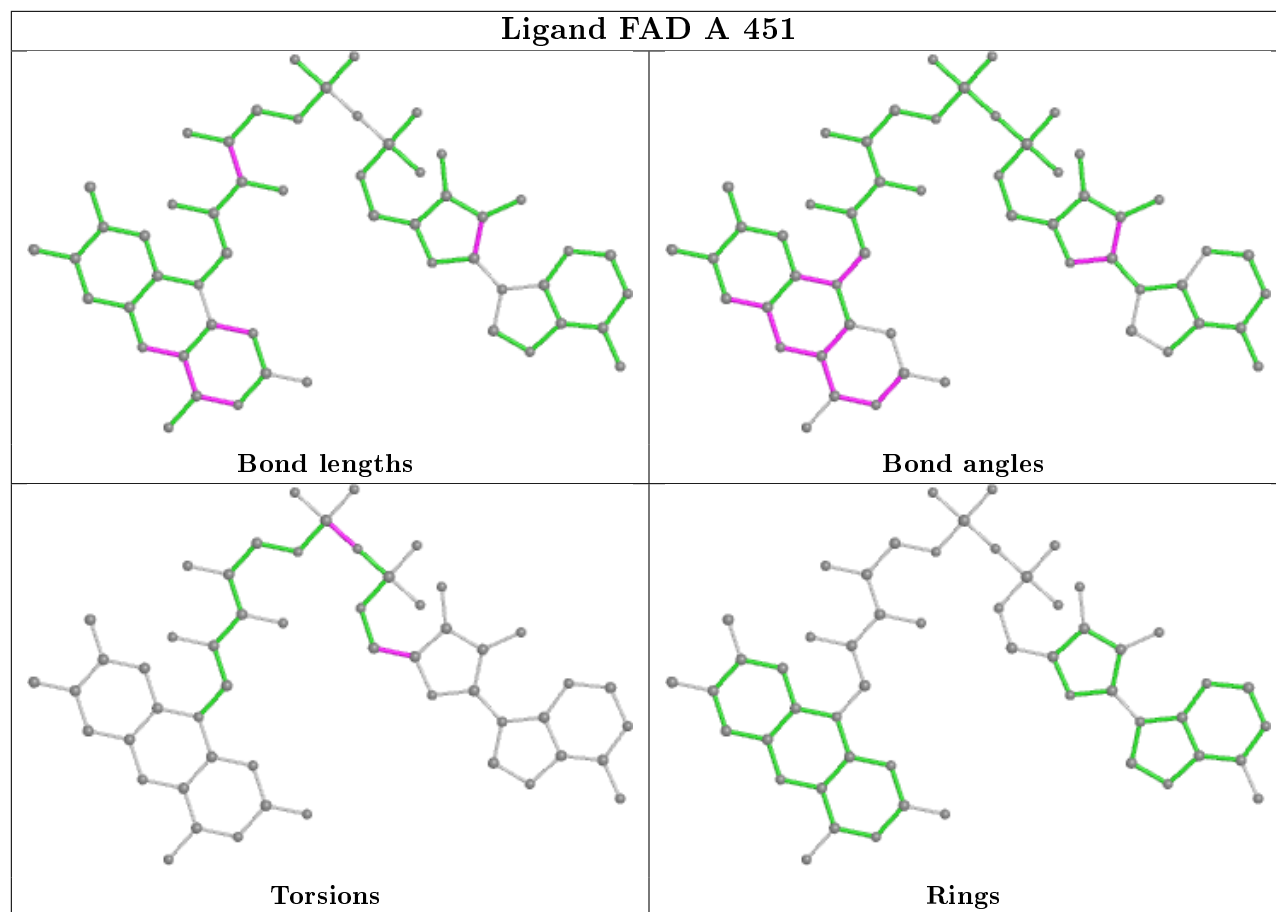
Bond angles

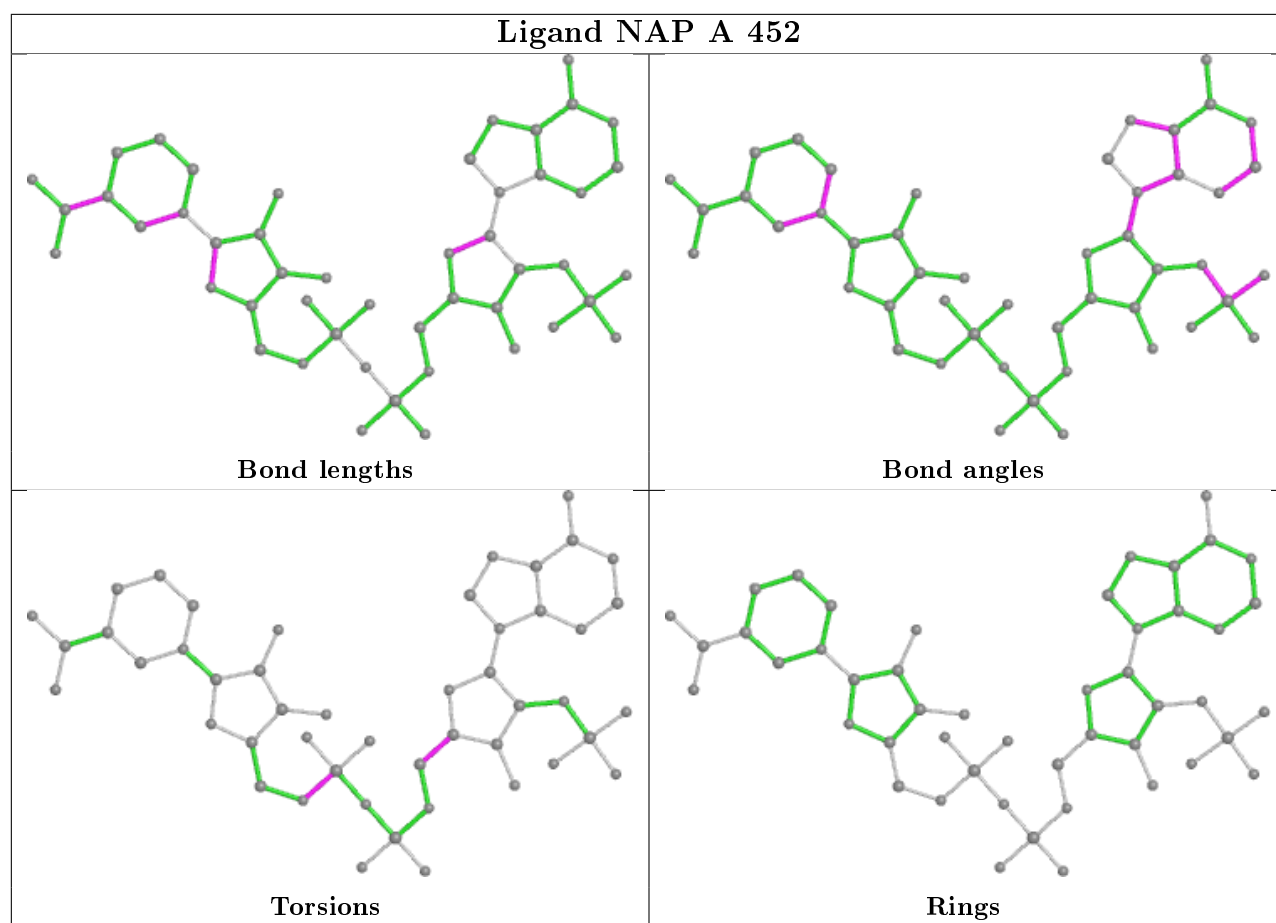


Torsions



Rings





5.7 Other polymers [i](#)

There are no such residues in this entry.

5.8 Polymer linkage issues [i](#)

There are no chain breaks in this entry.

6 Fit of model and data [i](#)

6.1 Protein, DNA and RNA chains [i](#)

In the following table, the column labelled ‘#RSRZ> 2’ contains the number (and percentage) of RSRZ outliers, followed by percent RSRZ outliers for the chain as percentile scores relative to all X-ray entries and entries of similar resolution. The OWAB column contains the minimum, median, 95th percentile and maximum values of the occupancy-weighted average B-factor per residue. The column labelled ‘Q< 0.9’ lists the number of (and percentage) of residues with an average occupancy less than 0.9.

Mol	Chain	Analysed	<RSRZ>	#RSRZ>2	OWAB(Å ²)	Q<0.9
1	A	448/450 (99%)	-0.57	2 (0%) 92 92	4, 18, 44, 63	0
1	B	449/450 (99%)	-0.67	1 (0%) 95 94	4, 16, 37, 67	0
All	All	897/900 (99%)	-0.62	3 (0%) 94 93	4, 17, 41, 67	0

All (3) RSRZ outliers are listed below:

Mol	Chain	Res	Type	RSRZ
1	B	450	ARG	2.7
1	A	3	LYS	2.1
1	A	177	TYR	2.0

6.2 Non-standard residues in protein, DNA, RNA chains [i](#)

There are no non-standard protein/DNA/RNA residues in this entry.

6.3 Carbohydrates [i](#)

There are no carbohydrates in this entry.

6.4 Ligands [i](#)

In the following table, the Atoms column lists the number of modelled atoms in the group and the number defined in the chemical component dictionary. The B-factors column lists the minimum, median, 95th percentile and maximum values of B factors of atoms in the group. The column labelled ‘Q< 0.9’ lists the number of atoms with occupancy less than 0.9.

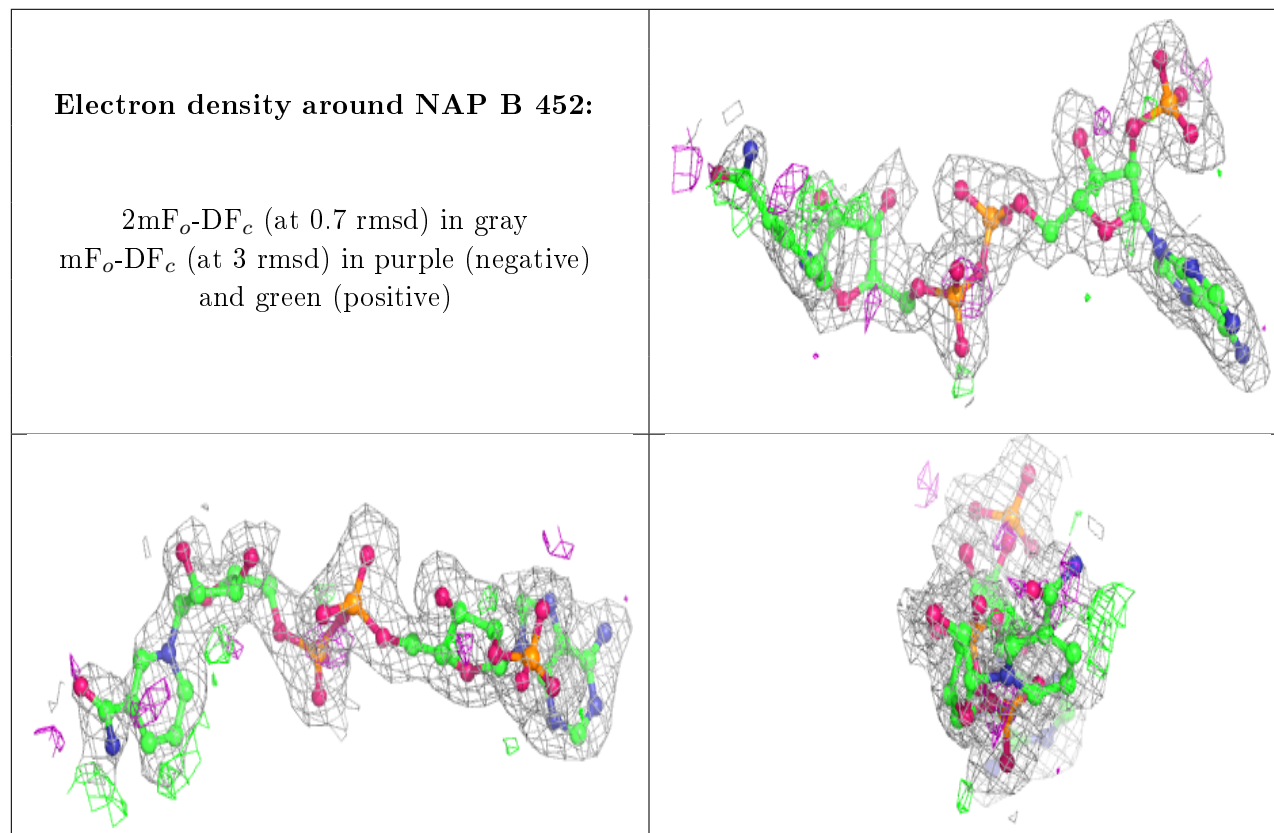
Mol	Type	Chain	Res	Atoms	RSCC	RSR	B-factors(Å ²)	Q<0.9
3	NAP	B	452	48/48	0.96	0.10	11,26,48,50	0
3	NAP	A	452	48/48	0.96	0.10	12,25,42,45	0

Continued on next page...

Continued from previous page...

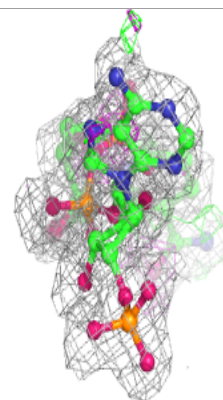
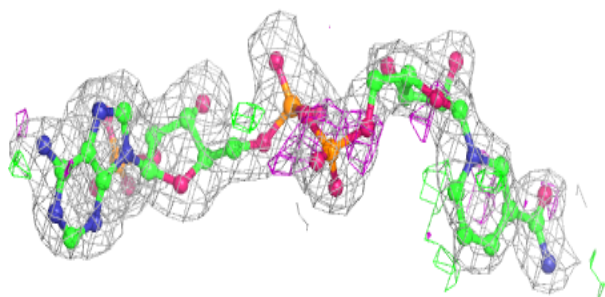
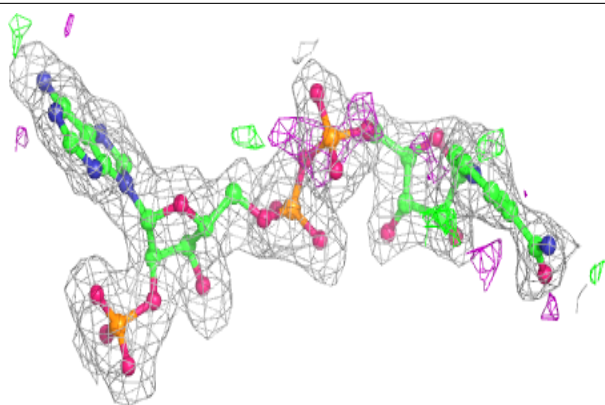
Mol	Type	Chain	Res	Atoms	RSCC	RSR	B-factors(\AA^2)	Q<0.9
2	FAD	A	451	53/53	0.97	0.08	2,14,23,25	0
2	FAD	B	451	53/53	0.98	0.07	2,8,16,23	0

The following is a graphical depiction of the model fit to experimental electron density of all instances of the Ligand of Interest. In addition, ligands with molecular weight > 250 and outliers as shown on the geometry validation Tables will also be included. Each fit is shown from different orientation to approximate a three-dimensional view.

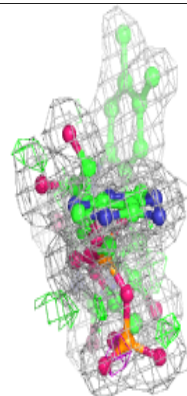
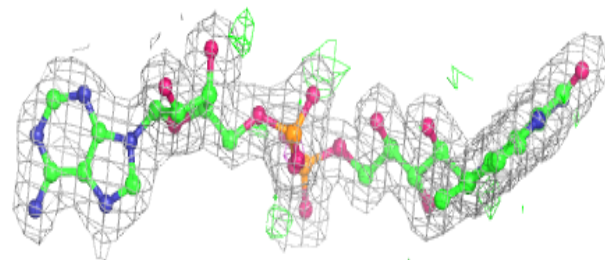
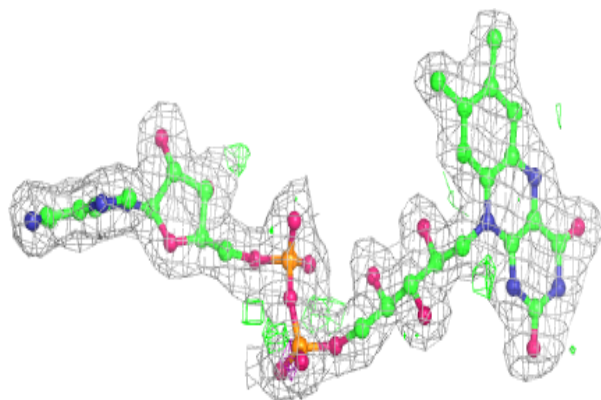


Electron density around NAP A 452:

$2mF_o-DF_c$ (at 0.7 rmsd) in gray
 mF_o-DF_c (at 3 rmsd) in purple (negative)
and green (positive)

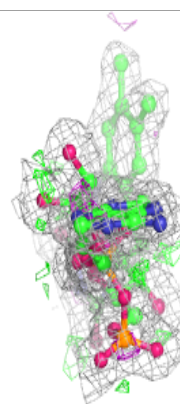
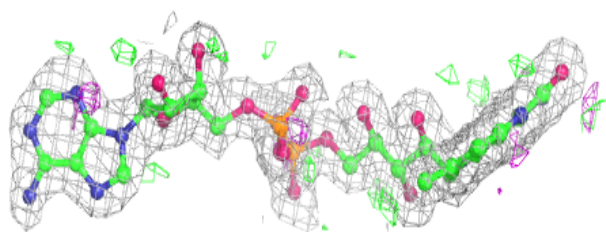
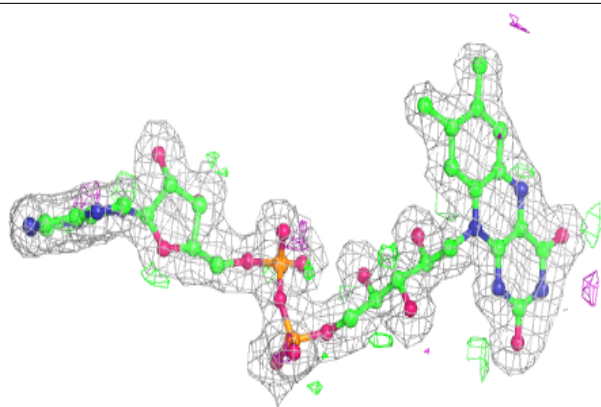
**Electron density around FAD A 451:**

$2mF_o-DF_c$ (at 0.7 rmsd) in gray
 mF_o-DF_c (at 3 rmsd) in purple (negative)
and green (positive)



Electron density around FAD B 451:

$2mF_o-DF_c$ (at 0.7 rmsd) in gray
 mF_o-DF_c (at 3 rmsd) in purple (negative)
and green (positive)



6.5 Other polymers [i](#)

There are no such residues in this entry.