



Full wwPDB X-ray Structure Validation Report ⓘ

May 13, 2020 – 05:03 pm BST

PDB ID : 3GEE
Title : Crystal structure of MnmE from *Chlorobium tepidum* in complex with GDP and FOLINIC ACID
Authors : Meyer, S.; Wittinghofer, A.
Deposited on : 2009-02-25
Resolution : 2.95 Å(reported)

This is a Full wwPDB X-ray Structure Validation Report for a publicly released PDB entry.

We welcome your comments at validation@mail.wwpdb.org

A user guide is available at

<https://www.wwpdb.org/validation/2017/XrayValidationReportHelp>

with specific help available everywhere you see the ⓘ symbol.

The following versions of software and data (see [references ⓘ](#)) were used in the production of this report:

MolProbity : 4.02b-467
Mogul : 1.8.5 (274361), CSD as541be (2020)
Xtriage (Phenix) : 1.13
EDS : 2.11
buster-report : 1.1.7 (2018)
Percentile statistics : 20191225.v01 (using entries in the PDB archive December 25th 2019)
Refmac : 5.8.0158
CCP4 : 7.0.044 (Gargrove)
Ideal geometry (proteins) : Engh & Huber (2001)
Ideal geometry (DNA, RNA) : Parkinson et al. (1996)
Validation Pipeline (wwPDB-VP) : 2.11

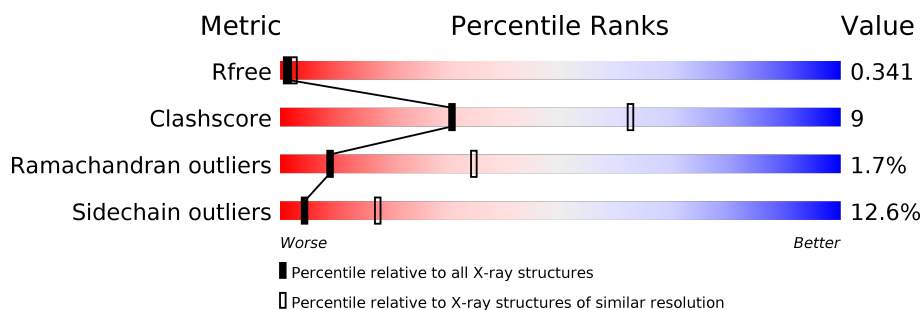
1 Overall quality at a glance

The following experimental techniques were used to determine the structure:

X-RAY DIFFRACTION


The reported resolution of this entry is 2.95 Å.

Percentile scores (ranging between 0-100) for global validation metrics of the entry are shown in the following graphic. The table shows the number of entries on which the scores are based.



Metric	Whole archive (#Entries)	Similar resolution (#Entries, resolution range(Å))
R_{free}	130704	3104 (3.00-2.92)
Clashscore	141614	3462 (3.00-2.92)
Ramachandran outliers	138981	3340 (3.00-2.92)
Sidechain outliers	138945	3343 (3.00-2.92)

The table below summarises the geometric issues observed across the polymeric chains and their fit to the electron density. The red, orange, yellow and green segments on the lower bar indicate the fraction of residues that contain outliers for ≥ 3 , 2, 1 and 0 types of geometric quality criteria respectively. A grey segment represents the fraction of residues that are not modelled. The numeric value for each fraction is indicated below the corresponding segment, with a dot representing fractions $\leq 5\%$

Mol	Chain	Length	Quality of chain
1	A	476	 67% 18% • 10%

2 Entry composition [i](#)

There are 3 unique types of molecules in this entry. The entry contains 3321 atoms, of which 0 are hydrogens and 0 are deuteriums.

In the tables below, the ZeroOcc column contains the number of atoms modelled with zero occupancy, the AltConf column contains the number of residues with at least one atom in alternate conformation and the Trace column contains the number of residues modelled with at most 2 atoms.

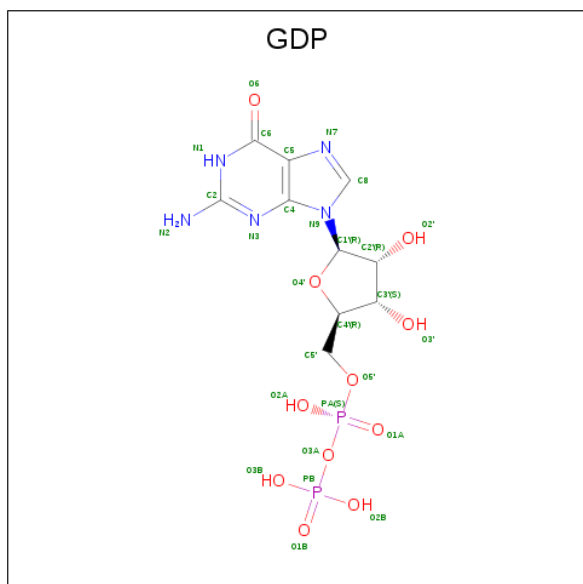
- Molecule 1 is a protein called tRNA modification GTPase mnME.

Mol	Chain	Residues	Atoms					ZeroOcc	AltConf	Trace
			Total	C	N	O	S			
1	A	427	3259	2041	574	629	15	0	0	0

There are 3 discrepancies between the modelled and reference sequences:

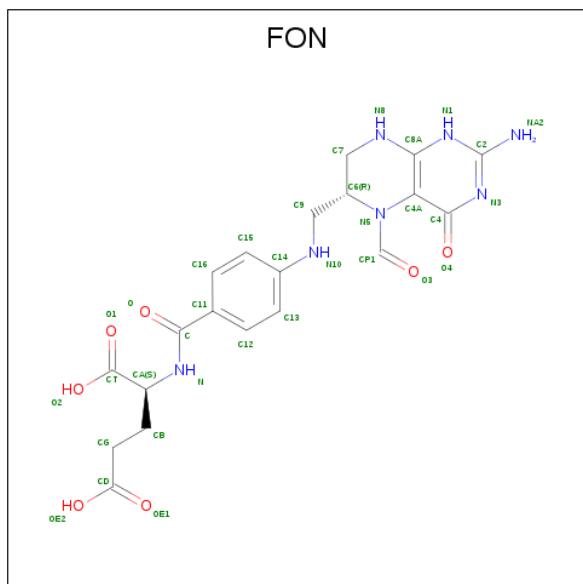
Chain	Residue	Modelled	Actual	Comment	Reference
A	-2	GLY	-	EXPRESSION TAG	UNP Q8KAS1
A	-1	SER	-	EXPRESSION TAG	UNP Q8KAS1
A	0	HIS	-	EXPRESSION TAG	UNP Q8KAS1

- Molecule 2 is GUANOSINE-5'-DIPHOSPHATE (three-letter code: GDP) (formula: $C_{10}H_{15}N_5O_{11}P_2$).



Mol	Chain	Residues	Atoms					ZeroOcc	AltConf
			Total	C	N	O	P		
2	A	1	28	10	5	11	2	0	0

- Molecule 3 is N-{[4-({[(6R)-2-amino-5-formyl-4-oxo-1,4,5,6,7,8-hexahydropteridin-6-yl]methyl}amino)phenyl]carbonyl}-L-glutamic acid (three-letter code: FON) (formula: $C_{20}H_{23}N_7O_7$).

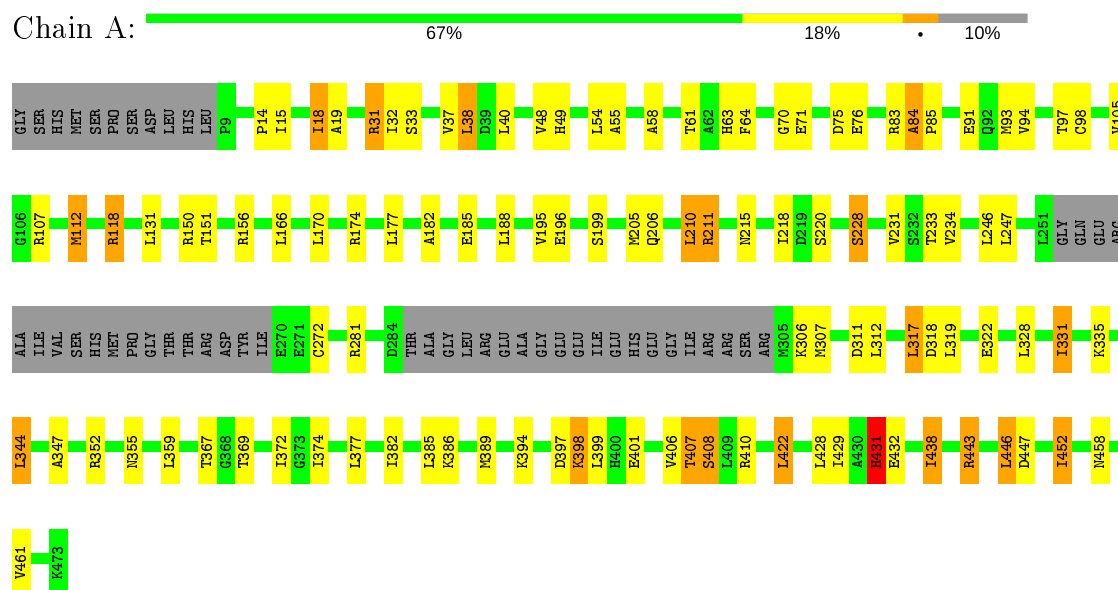


Mol	Chain	Residues	Atoms				ZeroOcc	AltConf
			Total	C	N	O		
3	A	1	34	20	7	7	0	0

3 Residue-property plots [i](#)

These plots are drawn for all protein, RNA and DNA chains in the entry. The first graphic for a chain summarises the proportions of the various outlier classes displayed in the second graphic. The second graphic shows the sequence view annotated by issues in geometry. Residues are color-coded according to the number of geometric quality criteria for which they contain at least one outlier: green = 0, yellow = 1, orange = 2 and red = 3 or more. Stretches of 2 or more consecutive residues without any outlier are shown as a green connector. Residues present in the sample, but not in the model, are shown in grey.

- Molecule 1: tRNA modification GTPase mmE



4 Data and refinement statistics

Property	Value	Source
Space group	I 41 2 2	Depositor
Cell constants a, b, c, α , β , γ	130.80 Å 130.80 Å 200.61 Å 90.00° 90.00° 90.00°	Depositor
Resolution (Å)	19.90 – 2.95 19.90 – 2.95	Depositor EDS
% Data completeness (in resolution range)	99.2 (19.90-2.95) 99.2 (19.90-2.95)	Depositor EDS
R_{merge}	0.08	Depositor
R_{sym}	0.06	Depositor
$\langle I/\sigma(I) \rangle$ ¹	1.75 (at 2.93 Å)	Xtriage
Refinement program	REFMAC 5.2.0019	Depositor
R, R_{free}	0.232 , 0.270 0.304 , 0.341	Depositor DCC
R_{free} test set	941 reflections (5.10%)	wwPDB-VP
Wilson B-factor (Å ²)	98.3	Xtriage
Anisotropy	0.204	Xtriage
Bulk solvent k_{sol} (e/Å ³), B_{sol} (Å ²)	0.32 , 55.5	EDS
L-test for twinning ²	$\langle L \rangle = 0.47$, $\langle L^2 \rangle = 0.30$	Xtriage
Estimated twinning fraction	No twinning to report.	Xtriage
F_o, F_c correlation	0.89	EDS
Total number of atoms	3321	wwPDB-VP
Average B, all atoms (Å ²)	106.0	wwPDB-VP

Xtriage's analysis on translational NCS is as follows: *The largest off-origin peak in the Patterson function is 3.42% of the height of the origin peak. No significant pseudotranslation is detected.*

¹Intensities estimated from amplitudes.

²Theoretical values of $\langle |L| \rangle$, $\langle L^2 \rangle$ for acentric reflections are 0.5, 0.333 respectively for untwinned datasets, and 0.375, 0.2 for perfectly twinned datasets.

5 Model quality

5.1 Standard geometry

Bond lengths and bond angles in the following residue types are not validated in this section: GDP, FON

The Z score for a bond length (or angle) is the number of standard deviations the observed value is removed from the expected value. A bond length (or angle) with $|Z| > 5$ is considered an outlier worth inspection. RMSZ is the root-mean-square of all Z scores of the bond lengths (or angles).

Mol	Chain	Bond lengths		Bond angles	
		RMSZ	$\# Z > 5$	RMSZ	$\# Z > 5$
1	A	0.34	0/3297	0.57	0/4449

There are no bond length outliers.

There are no bond angle outliers.

There are no chirality outliers.

There are no planarity outliers.

5.2 Too-close contacts

In the following table, the Non-H and H(model) columns list the number of non-hydrogen atoms and hydrogen atoms in the chain respectively. The H(added) column lists the number of hydrogen atoms added and optimized by MolProbity. The Clashes column lists the number of clashes within the asymmetric unit, whereas Symm-Clashes lists symmetry related clashes.

Mol	Chain	Non-H	H(model)	H(added)	Clashes	Symm-Clashes
1	A	3259	0	3284	61	0
2	A	28	0	12	1	0
3	A	34	0	21	1	0
All	All	3321	0	3317	61	0

The all-atom clashscore is defined as the number of clashes found per 1000 atoms (including hydrogen atoms). The all-atom clashscore for this structure is 9.

All (61) close contacts within the same asymmetric unit are listed below, sorted by their clash magnitude.

Atom-1	Atom-2	Interatomic distance (Å)	Clash overlap (Å)
1:A:228:SER:CB	1:A:407:THR:HG21	1.91	1.00

Continued on next page...

Continued from previous page...

Atom-1	Atom-2	Interatomic distance (Å)	Clash overlap (Å)
1:A:228:SER:HB2	1:A:407:THR:HG21	1.45	0.95
1:A:84:ALA:HB1	1:A:85:PRO:HD3	1.52	0.92
1:A:84:ALA:HB1	1:A:85:PRO:CD	2.04	0.87
1:A:84:ALA:CB	1:A:85:PRO:CD	2.56	0.82
1:A:174:ARG:HG2	1:A:174:ARG:HH11	1.47	0.80
1:A:61:THR:HG23	1:A:63:HIS:NE2	2.01	0.75
1:A:431:HIS:ND1	1:A:432:GLU:N	2.37	0.72
1:A:328:LEU:HA	1:A:331:ILE:HG23	1.72	0.71
1:A:32:ILE:HG21	1:A:112:MET:HG3	1.73	0.69
1:A:233:THR:HG22	1:A:312:LEU:HB3	1.72	0.69
1:A:58:ALA:O	1:A:61:THR:HG22	1.93	0.69
1:A:344:LEU:HD11	1:A:372:ILE:HD12	1.75	0.67
1:A:228:SER:CB	1:A:407:THR:CG2	2.71	0.67
1:A:215:ASN:HA	1:A:218:ILE:HG12	1.77	0.65
1:A:228:SER:HB3	1:A:407:THR:HG21	1.75	0.65
1:A:228:SER:HB3	1:A:407:THR:CG2	2.27	0.65
1:A:38:LEU:HD13	1:A:55:ALA:HA	1.77	0.65
1:A:319:LEU:HB2	1:A:347:ALA:HB1	1.83	0.61
1:A:182:ALA:HA	1:A:185:GLU:HB2	1.82	0.61
1:A:317:LEU:HB2	1:A:322:GLU:OE2	2.02	0.60
1:A:84:ALA:CB	1:A:85:PRO:HD2	2.34	0.57
1:A:19:ALA:HB2	1:A:31:ARG:HG2	1.85	0.57
1:A:407:THR:HG22	1:A:408:SER:H	1.70	0.56
1:A:48:VAL:HG13	1:A:49:HIS:ND1	2.22	0.54
1:A:196:GLU:HB2	1:A:199:SER:HB2	1.91	0.52
1:A:76:GLU:O	3:A:475:FON:H7	2.09	0.52
1:A:55:ALA:O	1:A:83:ARG:NH2	2.40	0.52
1:A:206:GLN:O	1:A:210:LEU:HB2	2.10	0.51
1:A:84:ALA:HB3	1:A:85:PRO:HD2	1.93	0.51
1:A:58:ALA:O	1:A:61:THR:CG2	2.57	0.51
1:A:48:VAL:HG11	1:A:64:PHE:CD2	2.45	0.50
1:A:234:VAL:HG21	1:A:307:MET:HG2	1.95	0.48
1:A:374:ILE:HD12	1:A:382:ILE:HD13	1.97	0.46
1:A:174:ARG:CG	1:A:174:ARG:HH11	2.23	0.46
1:A:174:ARG:NH1	1:A:174:ARG:HG2	2.24	0.46
1:A:272:CYS:HB3	1:A:281:ARG:HA	1.97	0.46
1:A:429:ILE:HG21	1:A:438:ILE:HB	1.97	0.46
1:A:220:SER:OG	1:A:406:VAL:HG12	2.15	0.45
1:A:335:LYS:HD2	1:A:369:THR:HG22	1.97	0.45
1:A:410:ARG:HH12	1:A:452:ILE:HA	1.81	0.45
1:A:317:LEU:HD12	1:A:322:GLU:OE1	2.17	0.45

Continued on next page...

Continued from previous page...

Atom-1	Atom-2	Interatomic distance (Å)	Clash overlap (Å)
1:A:231:VAL:HG13	1:A:311:ASP:HB2	1.98	0.44
1:A:443:ARG:O	1:A:447:ASP:HB2	2.18	0.44
1:A:377:LEU:HB2	2:A:474:GDP:C6	2.53	0.43
1:A:37:VAL:HG11	1:A:93:MET:HA	2.00	0.43
1:A:177:LEU:HB3	1:A:446:LEU:HB2	2.02	0.42
1:A:14:PRO:HA	1:A:33:SER:O	2.18	0.42
1:A:170:LEU:CD1	1:A:452:ILE:HD11	2.49	0.42
1:A:458:ASN:HB2	1:A:461:VAL:HB	2.01	0.42
1:A:15:ILE:HG22	1:A:118:ARG:HG2	2.01	0.41
1:A:211:ARG:HG3	1:A:422:LEU:HB3	2.02	0.41
1:A:318:ASP:O	1:A:322:GLU:HG3	2.21	0.41
1:A:112:MET:HA	1:A:112:MET:CE	2.49	0.41
1:A:328:LEU:HB2	1:A:367:THR:CG2	2.50	0.41
1:A:75:ASP:OD2	1:A:98:CYS:HB2	2.21	0.41
1:A:18:ILE:HD13	1:A:105:VAL:HG22	2.04	0.40
1:A:385:LEU:O	1:A:389:MET:HG3	2.21	0.40
1:A:374:ILE:HD13	1:A:374:ILE:HA	1.96	0.40
1:A:170:LEU:HD13	1:A:452:ILE:HD11	2.04	0.40
1:A:386:LYS:HA	1:A:389:MET:HE2	2.04	0.40

There are no symmetry-related clashes.

5.3 Torsion angles [i](#)

5.3.1 Protein backbone [i](#)

In the following table, the Percentiles column shows the percent Ramachandran outliers of the chain as a percentile score with respect to all X-ray entries followed by that with respect to entries of similar resolution.

The Analysed column shows the number of residues for which the backbone conformation was analysed, and the total number of residues.

Mol	Chain	Analysed	Favoured	Allowed	Outliers	Percentiles
1	A	421/476 (88%)	389 (92%)	25 (6%)	7 (2%)	9 34

All (7) Ramachandran outliers are listed below:

Mol	Chain	Res	Type
1	A	84	ALA
1	A	70	GLY

Continued on next page...

Continued from previous page...

Mol	Chain	Res	Type
1	A	355	ASN
1	A	397	ASP
1	A	398	LYS
1	A	408	SER
1	A	431	HIS

5.3.2 Protein sidechains ⓘ

In the following table, the Percentiles column shows the percent sidechain outliers of the chain as a percentile score with respect to all X-ray entries followed by that with respect to entries of similar resolution.

The Analysed column shows the number of residues for which the sidechain conformation was analysed, and the total number of residues.

Mol	Chain	Analysed	Rotameric	Outliers	Percentiles
1	A	342/386 (89%)	299 (87%)	43 (13%)	4 17

All (43) residues with a non-rotameric sidechain are listed below:

Mol	Chain	Res	Type
1	A	18	ILE
1	A	31	ARG
1	A	38	LEU
1	A	40	LEU
1	A	54	LEU
1	A	71	GLU
1	A	91	GLU
1	A	94	VAL
1	A	97	THR
1	A	107	ARG
1	A	112	MET
1	A	118	ARG
1	A	131	LEU
1	A	150	ARG
1	A	151	THR
1	A	156	ARG
1	A	166	LEU
1	A	188	LEU
1	A	195	VAL
1	A	205	MET
1	A	210	LEU

Continued on next page...

Continued from previous page...

Mol	Chain	Res	Type
1	A	211	ARG
1	A	228	SER
1	A	246	LEU
1	A	247	LEU
1	A	306	LYS
1	A	317	LEU
1	A	331	ILE
1	A	344	LEU
1	A	352	ARG
1	A	359	LEU
1	A	394	LYS
1	A	398	LYS
1	A	399	LEU
1	A	401	GLU
1	A	407	THR
1	A	422	LEU
1	A	428	LEU
1	A	431	HIS
1	A	438	ILE
1	A	443	ARG
1	A	446	LEU
1	A	452	ILE

Some sidechains can be flipped to improve hydrogen bonding and reduce clashes. There are no such sidechains identified.

5.3.3 RNA ⓘ

There are no RNA molecules in this entry.

5.4 Non-standard residues in protein, DNA, RNA chains ⓘ

There are no non-standard protein/DNA/RNA residues in this entry.

5.5 Carbohydrates ⓘ

There are no carbohydrates in this entry.

5.6 Ligand geometry

2 ligands are modelled in this entry.

In the following table, the Counts columns list the number of bonds (or angles) for which Mogul statistics could be retrieved, the number of bonds (or angles) that are observed in the model and the number of bonds (or angles) that are defined in the Chemical Component Dictionary. The Link column lists molecule types, if any, to which the group is linked. The Z score for a bond length (or angle) is the number of standard deviations the observed value is removed from the expected value. A bond length (or angle) with $|Z| > 2$ is considered an outlier worth inspection. RMSZ is the root-mean-square of all Z scores of the bond lengths (or angles).

Mol	Type	Chain	Res	Link	Bond lengths			Bond angles		
					Counts	RMSZ	# Z > 2	Counts	RMSZ	# Z > 2
2	GDP	A	474	-	24,30,30	1.23	2 (8%)	31,47,47	2.02	8 (25%)
3	FON	A	475	-	28,36,36	1.88	3 (10%)	28,50,50	2.07	9 (32%)

In the following table, the Chirals column lists the number of chiral outliers, the number of chiral centers analysed, the number of these observed in the model and the number defined in the Chemical Component Dictionary. Similar counts are reported in the Torsion and Rings columns. '-' means no outliers of that kind were identified.

Mol	Type	Chain	Res	Link	Chirals	Torsions	Rings
2	GDP	A	474	-	-	0/12/32/32	0/3/3/3
3	FON	A	475	-	-	10/18/37/37	0/2/3/3

All (5) bond length outliers are listed below:

Mol	Chain	Res	Type	Atoms	Z	Observed(Å)	Ideal(Å)
3	A	475	FON	CP1-N5	-6.39	1.26	1.35
3	A	475	FON	C4-C4A	6.06	1.49	1.41
2	A	474	GDP	C6-C5	4.45	1.49	1.41
3	A	475	FON	C4A-C8A	3.55	1.48	1.41
2	A	474	GDP	C5-C4	2.57	1.47	1.40

All (17) bond angle outliers are listed below:

Mol	Chain	Res	Type	Atoms	Z	Observed(°)	Ideal(°)
2	A	474	GDP	C2-N3-C4	5.05	121.12	115.36
3	A	475	FON	C4A-N5-C6	-4.84	110.72	119.31
2	A	474	GDP	C6-N1-C2	4.11	122.46	115.93
3	A	475	FON	C4-N3-C2	4.07	122.40	115.93
2	A	474	GDP	C5-C6-N1	-4.05	117.89	123.43
3	A	475	FON	CA-N-C	4.05	127.56	122.34

Continued on next page...

Continued from previous page...

Mol	Chain	Res	Type	Atoms	Z	Observed(°)	Ideal(°)
2	A	474	GDP	PA-O3A-PB	-3.58	120.55	132.83
2	A	474	GDP	C6-C5-C4	-3.54	117.42	120.80
3	A	475	FON	C2-N1-C8A	3.49	122.35	114.54
2	A	474	GDP	N3-C2-N1	-3.40	122.69	127.22
2	A	474	GDP	C3'-C2'-C1'	3.35	106.03	100.98
3	A	475	FON	O3-CP1-N5	-3.28	120.62	125.36
3	A	475	FON	C4-C4A-C8A	3.24	116.98	114.44
2	A	474	GDP	C4-C5-N7	-2.75	106.54	109.40
3	A	475	FON	C4A-C4-N3	-2.73	117.54	123.14
3	A	475	FON	C9-N10-C14	2.43	128.43	122.14
3	A	475	FON	N3-C2-N1	-2.06	122.19	125.42

There are no chirality outliers.

All (10) torsion outliers are listed below:

Mol	Chain	Res	Type	Atoms
3	A	475	FON	O3-CP1-N5-C4A
3	A	475	FON	O3-CP1-N5-C6
3	A	475	FON	CT-CA-N-C
3	A	475	FON	C15-C14-N10-C9
3	A	475	FON	C13-C14-N10-C9
3	A	475	FON	C11-C-N-CA
3	A	475	FON	O-C-N-CA
3	A	475	FON	CA-CB-CG-CD
3	A	475	FON	CB-CA-N-C
3	A	475	FON	C6-C9-N10-C14

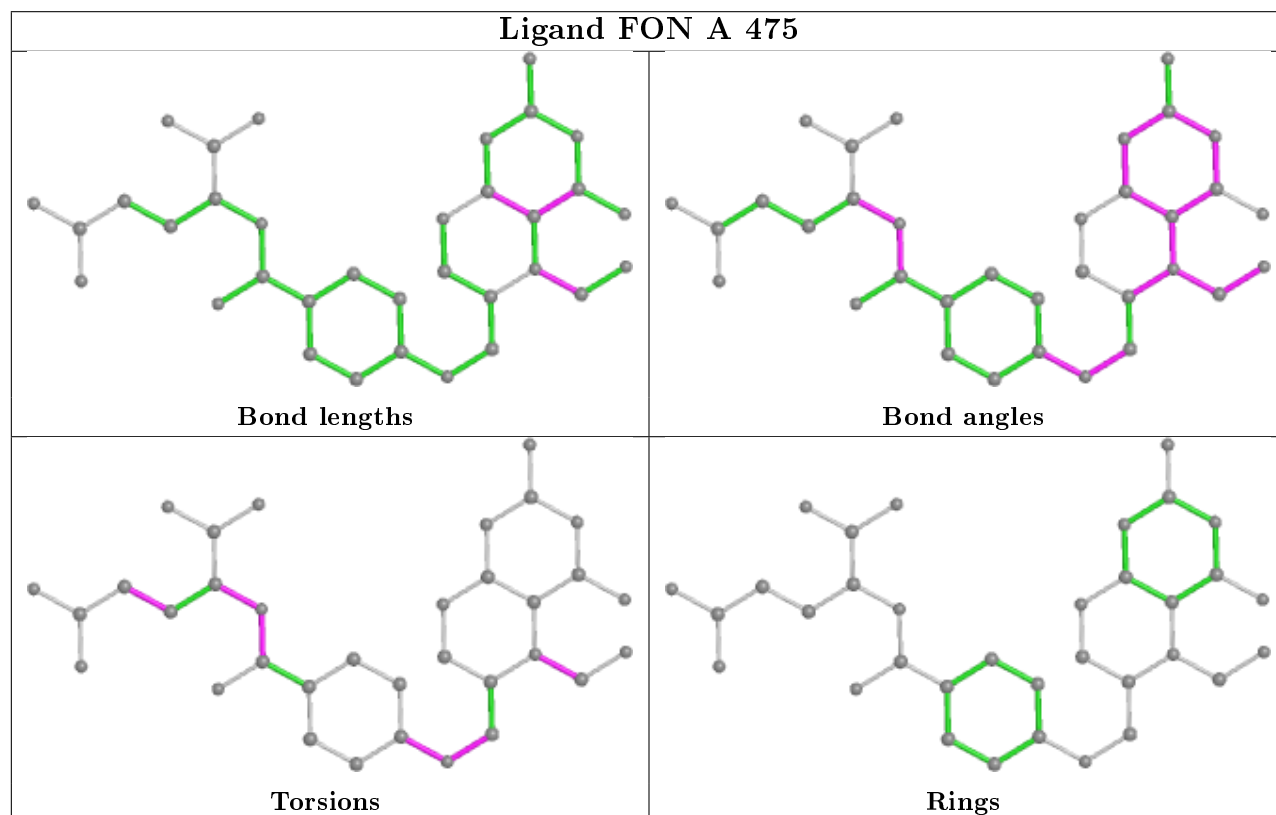
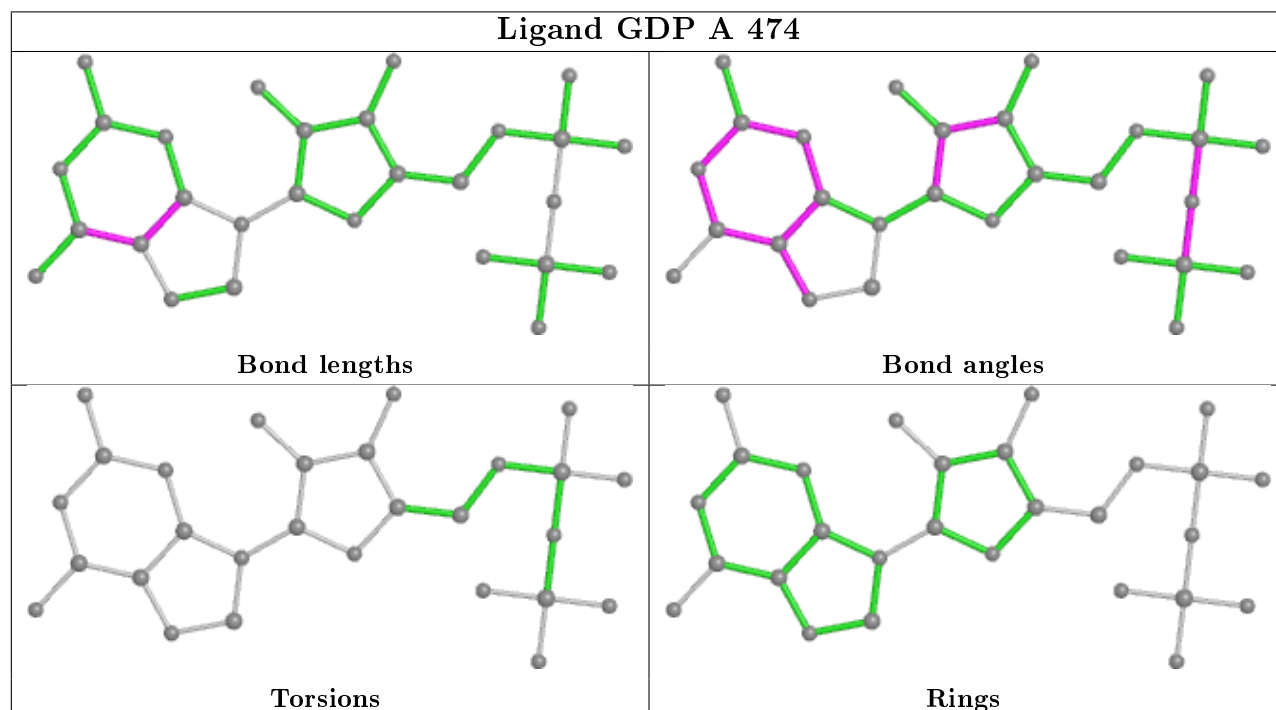
There are no ring outliers.

2 monomers are involved in 2 short contacts:

Mol	Chain	Res	Type	Clashes	Symm-Clashes
2	A	474	GDP	1	0
3	A	475	FON	1	0

The following is a two-dimensional graphical depiction of Mogul quality analysis of bond lengths, bond angles, torsion angles, and ring geometry for all instances of the Ligand of Interest. In addition, ligands with molecular weight > 250 and outliers as shown on the validation Tables will also be included. For torsion angles, if less than 5% of the Mogul distribution of torsion angles is within 10 degrees of the torsion angle in question, then that torsion angle is considered an outlier. Any bond that is central to one or more torsion angles identified as an outlier by Mogul will be highlighted in the graph. For rings, the root-mean-square deviation (RMSD) between the ring in question and similar rings identified by Mogul is calculated over all ring torsion angles. If the

average RMSD is greater than 60 degrees and the minimal RMSD between the ring in question and any Mogul-identified rings is also greater than 60 degrees, then that ring is considered an outlier. The outliers are highlighted in purple. The color gray indicates Mogul did not find sufficient equivalents in the CSD to analyse the geometry.



5.7 Other polymers

There are no such residues in this entry.

5.8 Polymer linkage issues

There are no chain breaks in this entry.

6 Fit of model and data [i](#)

6.1 Protein, DNA and RNA chains [i](#)

Unable to reproduce the depositors R factor - this section is therefore empty.

6.2 Non-standard residues in protein, DNA, RNA chains [i](#)

Unable to reproduce the depositors R factor - this section is therefore empty.

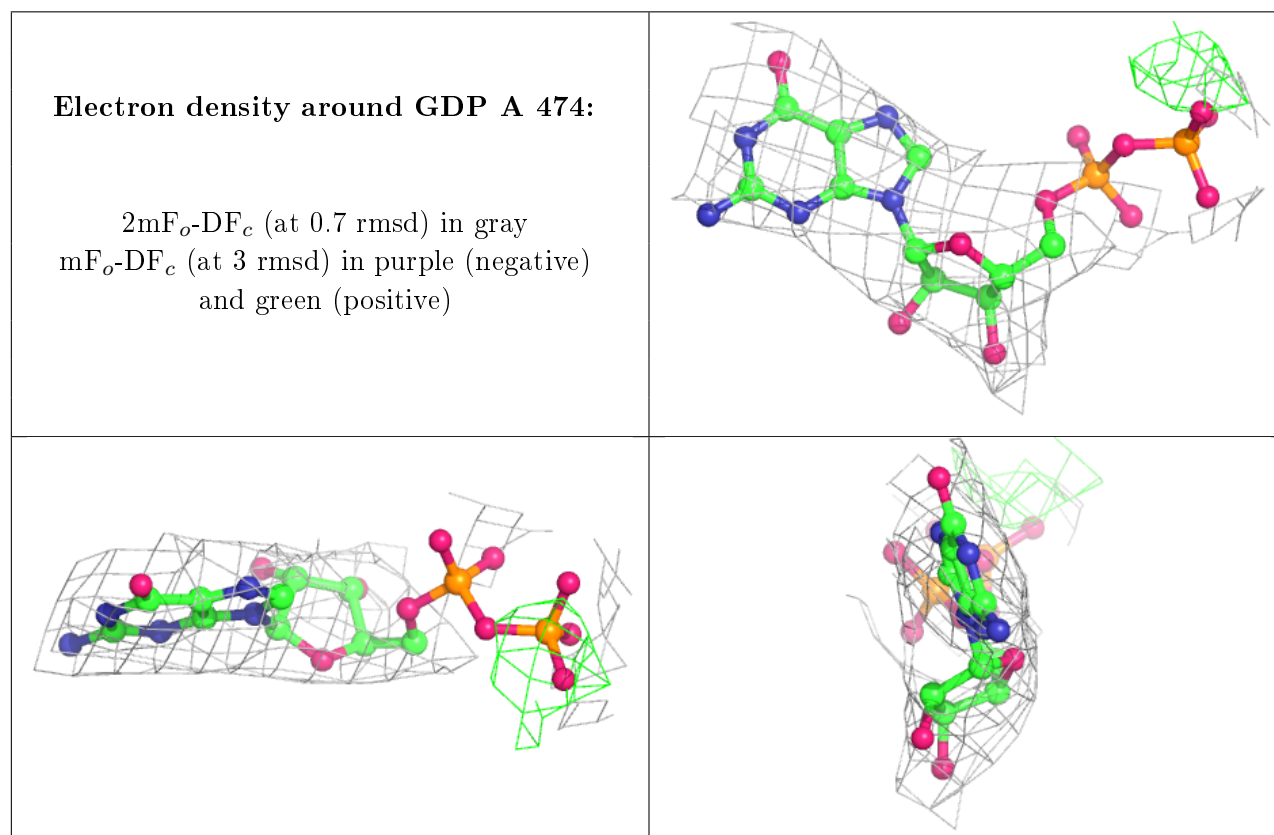
6.3 Carbohydrates [i](#)

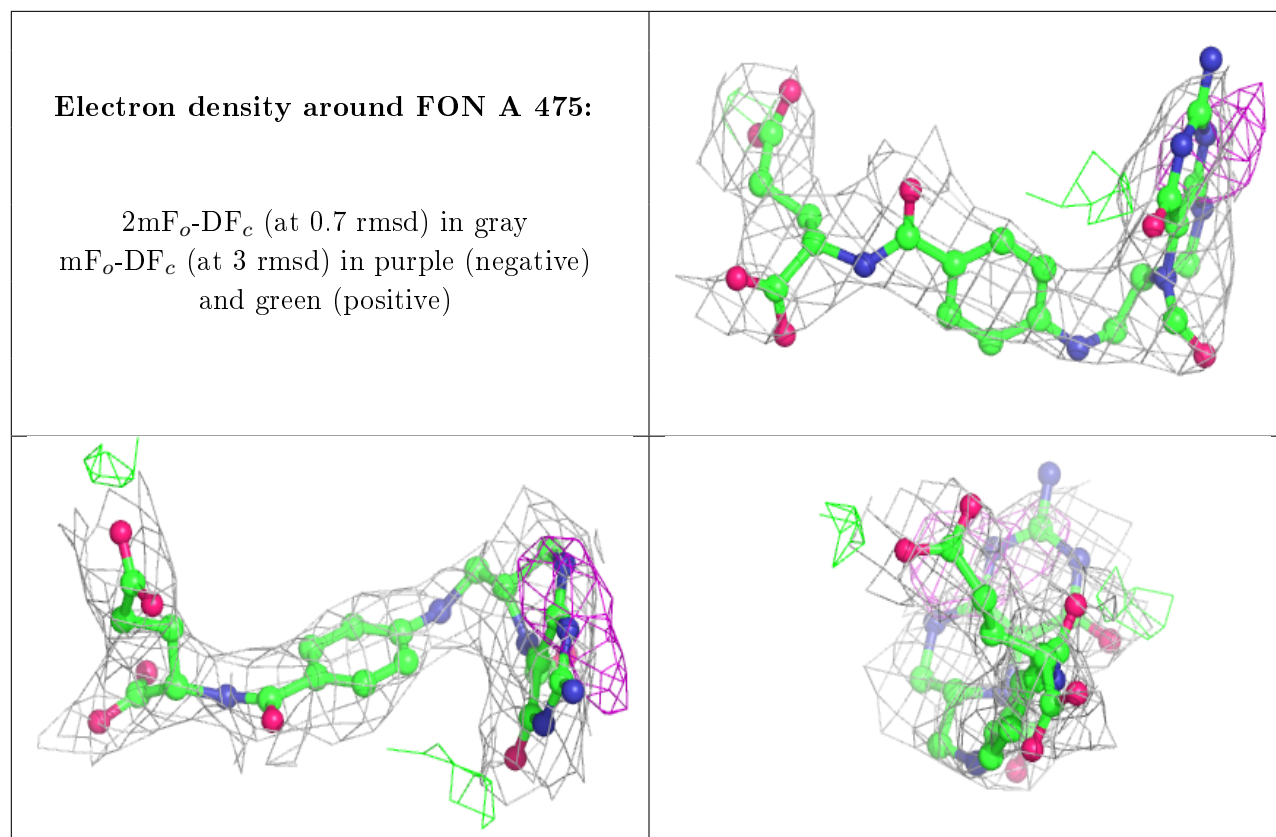
Unable to reproduce the depositors R factor - this section is therefore empty.

6.4 Ligands [i](#)

Unable to reproduce the depositors R factor - this section is therefore empty.

The following is a graphical depiction of the model fit to experimental electron density of all instances of the Ligand of Interest. In addition, ligands with molecular weight > 250 and outliers as shown on the geometry validation Tables will also be included. Each fit is shown from different orientation to approximate a three-dimensional view.





6.5 Other polymers [i](#)

Unable to reproduce the depositors R factor - this section is therefore empty.