



# wwPDB X-ray Structure Validation Summary Report ⓘ

Aug 29, 2020 – 04:08 PM BST

PDB ID : 6GGL  
Title : Crystal structure of CotB2 variant F107A  
Authors : Driller, R.; Janke, S.; Fuchs, M.; Warner, E.; Mhashal, A.R.; Major, D.T.; Christmann, M.; Brueck, T.; Loll, B.  
Deposited on : 2018-05-03  
Resolution : 1.90 Å(reported)

This is a wwPDB X-ray Structure Validation Summary Report for a publicly released PDB entry.

We welcome your comments at [validation@mail.wwpdb.org](mailto:validation@mail.wwpdb.org)

A user guide is available at

<https://www.wwpdb.org/validation/2017/XrayValidationReportHelp>

with specific help available everywhere you see the ⓘ symbol.

---

The following versions of software and data (see [references ⓘ](#)) were used in the production of this report:

MolProbity	:	4.02b-467
Xtriage (Phenix)	:	1.13
EDS	:	2.13
Percentile statistics	:	20191225.v01 (using entries in the PDB archive December 25th 2019)
Refmac	:	5.8.0158
CCP4	:	7.0.044 (Gargrove)
Ideal geometry (proteins)	:	Engh & Huber (2001)
Ideal geometry (DNA, RNA)	:	Parkinson et al. (1996)
Validation Pipeline (wwPDB-VP)	:	2.13

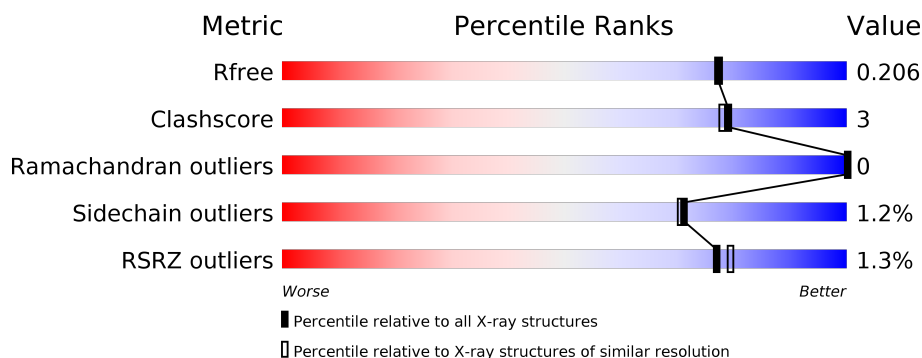
# 1 Overall quality at a glance ⓘ

The following experimental techniques were used to determine the structure:

## *X-RAY DIFFRACTION*

The reported resolution of this entry is 1.90 Å.

Percentile scores (ranging between 0-100) for global validation metrics of the entry are shown in the following graphic. The table shows the number of entries on which the scores are based.



Metric	Whole archive (#Entries)	Similar resolution (#Entries, resolution range(Å))
$R_{free}$	130704	6207 (1.90-1.90)
Clashscore	141614	6847 (1.90-1.90)
Ramachandran outliers	138981	6760 (1.90-1.90)
Sidechain outliers	138945	6760 (1.90-1.90)
RSRZ outliers	127900	6082 (1.90-1.90)

The table below summarises the geometric issues observed across the polymeric chains and their fit to the electron density. The red, orange, yellow and green segments on the lower bar indicate the fraction of residues that contain outliers for  $\geq 3$ , 2, 1 and 0 types of geometric quality criteria respectively. A grey segment represents the fraction of residues that are not modelled. The numeric value for each fraction is indicated below the corresponding segment, with a dot representing fractions  $\leq 5\%$ . The upper red bar (where present) indicates the fraction of residues that have poor fit to the electron density. The numeric value is given above the bar.

Mol	Chain	Length	Quality of chain
1	A	318	
1	B	318	

## 2 Entry composition

There are 4 unique types of molecules in this entry. The entry contains 4855 atoms, of which 0 are hydrogens and 0 are deuteriums.

In the tables below, the ZeroOcc column contains the number of atoms modelled with zero occupancy, the AltConf column contains the number of residues with at least one atom in alternate conformation and the Trace column contains the number of residues modelled with at most 2 atoms.

- Molecule 1 is a protein called Cyclooctat-9-en-7-ol synthase.

Mol	Chain	Residues	Atoms					ZeroOcc	AltConf	Trace
1	A	277	Total	C	N	O	S	0	5	0
			2309	1470	386	436	17			
1	B	280	Total	C	N	O	S	0	2	0
			2297	1462	387	431	17			

There are 24 discrepancies between the modelled and reference sequences:

Chain	Residue	Modelled	Actual	Comment	Reference
A	107	ALA	PHE	variant	UNP C9K1X5
A	308	ALA	-	expression tag	UNP C9K1X5
A	309	ALA	-	expression tag	UNP C9K1X5
A	310	ALA	-	expression tag	UNP C9K1X5
A	311	LEU	-	expression tag	UNP C9K1X5
A	312	GLU	-	expression tag	UNP C9K1X5
A	313	HIS	-	expression tag	UNP C9K1X5
A	314	HIS	-	expression tag	UNP C9K1X5
A	315	HIS	-	expression tag	UNP C9K1X5
A	316	HIS	-	expression tag	UNP C9K1X5
A	317	HIS	-	expression tag	UNP C9K1X5
A	318	HIS	-	expression tag	UNP C9K1X5
B	107	ALA	PHE	variant	UNP C9K1X5
B	308	ALA	-	expression tag	UNP C9K1X5
B	309	ALA	-	expression tag	UNP C9K1X5
B	310	ALA	-	expression tag	UNP C9K1X5
B	311	LEU	-	expression tag	UNP C9K1X5
B	312	GLU	-	expression tag	UNP C9K1X5
B	313	HIS	-	expression tag	UNP C9K1X5
B	314	HIS	-	expression tag	UNP C9K1X5
B	315	HIS	-	expression tag	UNP C9K1X5
B	316	HIS	-	expression tag	UNP C9K1X5
B	317	HIS	-	expression tag	UNP C9K1X5
B	318	HIS	-	expression tag	UNP C9K1X5

- Molecule 2 is MAGNESIUM ION (three-letter code: MG) (formula: Mg).

Mol	Chain	Residues	Atoms		ZeroOcc	AltConf
2	B	1	Total 1	Mg 1	0	0
2	A	1	Total 1	Mg 1	0	0

- Molecule 3 is CHLORIDE ION (three-letter code: CL) (formula: Cl).

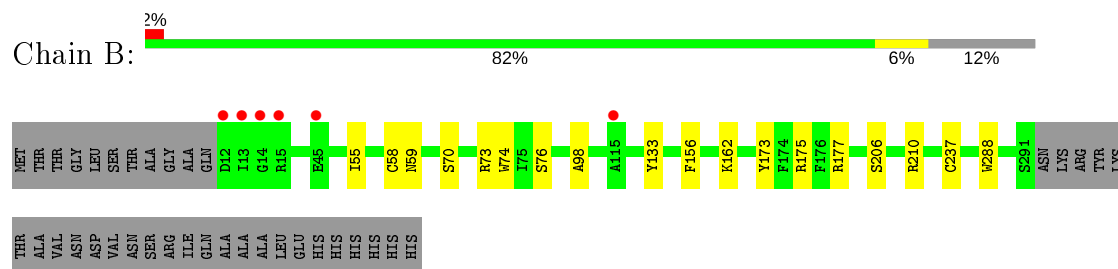
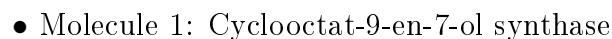
Mol	Chain	Residues	Atoms		ZeroOcc	AltConf
3	A	1	Total 1	Cl 1	0	0

- Molecule 4 is water.

Mol	Chain	Residues	Atoms		ZeroOcc	AltConf
4	A	124	Total 124	O 124	0	0
4	B	122	Total 122	O 122	0	0



- Molecule 1: Cyclooctat-9-en-7-ol synthase



## 4 Data and refinement statistics

Property	Value	Source
Space group	P 21 21 21	Depositor
Cell constants a, b, c, $\alpha$ , $\beta$ , $\gamma$	61.41Å 100.08Å 107.94Å 90.00° 90.00° 90.00°	Depositor
Resolution (Å)	47.50 – 1.90 47.50 – 1.90	Depositor EDS
% Data completeness (in resolution range)	99.9 (47.50-1.90) 99.9 (47.50-1.90)	Depositor EDS
$R_{merge}$	(Not available)	Depositor
$R_{sym}$	(Not available)	Depositor
$\langle I/\sigma(I) \rangle$ <sup>1</sup>	1.45 (at 1.90Å)	Xtriage
Refinement program	PHENIX (1.11.1 _2575: ???)	Depositor
R, $R_{free}$	0.175 , 0.206 0.175 , 0.206	Depositor DCC
$R_{free}$ test set	2005 reflections (3.77%)	wwPDB-VP
Wilson B-factor (Å <sup>2</sup> )	28.4	Xtriage
Anisotropy	0.392	Xtriage
Bulk solvent $k_{sol}$ (e/Å <sup>3</sup> ), $B_{sol}$ (Å <sup>2</sup> )	0.36 , 46.6	EDS
L-test for twinning <sup>2</sup>	$\langle  L  \rangle = 0.48$ , $\langle L^2 \rangle = 0.32$	Xtriage
Estimated twinning fraction	No twinning to report.	Xtriage
$F_o, F_c$ correlation	0.96	EDS
Total number of atoms	4855	wwPDB-VP
Average B, all atoms (Å <sup>2</sup> )	32.0	wwPDB-VP

Xtriage's analysis on translational NCS is as follows: *The analyses of the Patterson function reveals a significant off-origin peak that is 45.76 % of the origin peak, indicating pseudo-translational symmetry. The chance of finding a peak of this or larger height randomly in a structure without pseudo-translational symmetry is equal to 1.2621e-04. The detected translational NCS is most likely also responsible for the elevated intensity ratio.*

<sup>1</sup> Intensities estimated from amplitudes.

<sup>2</sup> Theoretical values of  $\langle |L| \rangle$ ,  $\langle L^2 \rangle$  for acentric reflections are 0.5, 0.333 respectively for untwinned datasets, and 0.375, 0.2 for perfectly twinned datasets.

## 5 Model quality

### 5.1 Standard geometry

Bond lengths and bond angles in the following residue types are not validated in this section: MG, CL

The Z score for a bond length (or angle) is the number of standard deviations the observed value is removed from the expected value. A bond length (or angle) with  $|Z| > 5$  is considered an outlier worth inspection. RMSZ is the root-mean-square of all Z scores of the bond lengths (or angles).

Mol	Chain	Bond lengths		Bond angles	
		RMSZ	# Z  >5	RMSZ	# Z  >5
1	A	0.39	0/2370	0.52	0/3216
1	B	0.39	0/2359	0.53	0/3199
All	All	0.39	0/4729	0.52	0/6415

There are no bond length outliers.

There are no bond angle outliers.

There are no chirality outliers.

There are no planarity outliers.

### 5.2 Too-close contacts

In the following table, the Non-H and H(model) columns list the number of non-hydrogen atoms and hydrogen atoms in the chain respectively. The H(added) column lists the number of hydrogen atoms added and optimized by MolProbity. The Clashes column lists the number of clashes within the asymmetric unit, whereas Symm-Clashes lists symmetry related clashes.

Mol	Chain	Non-H	H(model)	H(added)	Clashes	Symm-Clashes
1	A	2309	0	2209	15	0
1	B	2297	0	2219	12	0
2	A	1	0	0	0	0
2	B	1	0	0	0	0
3	A	1	0	0	0	0
4	A	124	0	0	4	0
4	B	122	0	0	2	0
All	All	4855	0	4428	25	0

The all-atom clashscore is defined as the number of clashes found per 1000 atoms (including hydrogen atoms). The all-atom clashscore for this structure is 3.

The worst 5 of 25 close contacts within the same asymmetric unit are listed below, sorted by their clash magnitude.

Atom-1	Atom-2	Interatomic distance (Å)	Clash overlap (Å)
1:A:52:ARG:NH2	4:A:501:HOH:O	2.06	0.87
1:B:70:SER:H	1:B:73:ARG:HH12	1.27	0.80
1:A:69:VAL:HG11	1:A:74:TRP:CZ2	2.29	0.67
1:B:70:SER:H	1:B:73:ARG:NH1	1.94	0.64
1:A:28[A]:ARG:NH1	4:A:506:HOH:O	2.37	0.57

There are no symmetry-related clashes.

## 5.3 Torsion angles [i](#)

### 5.3.1 Protein backbone [i](#)

In the following table, the Percentiles column shows the percent Ramachandran outliers of the chain as a percentile score with respect to all X-ray entries followed by that with respect to entries of similar resolution.

The Analysed column shows the number of residues for which the backbone conformation was analysed, and the total number of residues.

Mol	Chain	Analysed	Favoured	Allowed	Outliers	Percentiles	
1	A	280/318 (88%)	279 (100%)	1 (0%)	0	100	100
1	B	280/318 (88%)	279 (100%)	1 (0%)	0	100	100
All	All	560/636 (88%)	558 (100%)	2 (0%)	0	100	100

There are no Ramachandran outliers to report.

### 5.3.2 Protein sidechains [i](#)

In the following table, the Percentiles column shows the percent sidechain outliers of the chain as a percentile score with respect to all X-ray entries followed by that with respect to entries of similar resolution.

The Analysed column shows the number of residues for which the sidechain conformation was analysed, and the total number of residues.

Mol	Chain	Analysed	Rotameric	Outliers	Percentiles	
1	A	253/280 (90%)	248 (98%)	5 (2%)	55	51

*Continued on next page...*



*Continued from previous page...*

Mol	Chain	Analysed	Rotameric	Outliers	Percentiles	
1	B	252/280 (90%)	251 (100%)	1 (0%)	91	91
All	All	505/560 (90%)	499 (99%)	6 (1%)	71	70

5 of 6 residues with a non-rotameric sidechain are listed below:

Mol	Chain	Res	Type
1	A	137	GLU
1	B	177	ARG
1	A	227	ARG
1	A	88	ARG
1	A	283	TYR

Some sidechains can be flipped to improve hydrogen bonding and reduce clashes. There are no such sidechains identified.

### 5.3.3 RNA ⓘ

There are no RNA molecules in this entry.

## 5.4 Non-standard residues in protein, DNA, RNA chains ⓘ

There are no non-standard protein/DNA/RNA residues in this entry.

## 5.5 Carbohydrates ⓘ

There are no monosaccharides in this entry.

## 5.6 Ligand geometry ⓘ

Of 3 ligands modelled in this entry, 3 are monoatomic - leaving 0 for Mogul analysis.

There are no bond length outliers.

There are no bond angle outliers.

There are no chirality outliers.

There are no torsion outliers.

There are no ring outliers.

No monomer is involved in short contacts.

## 5.7 Other polymers [i](#)

There are no such residues in this entry.

## 5.8 Polymer linkage issues [i](#)

There are no chain breaks in this entry.

## 6 Fit of model and data [i](#)

### 6.1 Protein, DNA and RNA chains [i](#)

In the following table, the column labelled ‘#RSRZ> 2’ contains the number (and percentage) of RSRZ outliers, followed by percent RSRZ outliers for the chain as percentile scores relative to all X-ray entries and entries of similar resolution. The OWAB column contains the minimum, median, 95<sup>th</sup> percentile and maximum values of the occupancy-weighted average B-factor per residue. The column labelled ‘Q< 0.9’ lists the number of (and percentage) of residues with an average occupancy less than 0.9.

Mol	Chain	Analysed	<RSRZ>	#RSRZ>2	OWAB(Å <sup>2</sup> )	Q<0.9
1	A	277/318 (87%)	-0.06	1 (0%) 92 93	18, 30, 52, 68	0
1	B	280/318 (88%)	-0.03	6 (2%) 63 66	18, 30, 54, 72	0
All	All	557/636 (87%)	-0.04	7 (1%) 77 79	18, 30, 53, 72	0

The worst 5 of 7 RSRZ outliers are listed below:

Mol	Chain	Res	Type	RSRZ
1	B	13	ILE	8.8
1	B	12	ASP	3.7
1	A	15	ARG	3.1
1	B	14	GLY	2.5
1	B	115	ALA	2.4

### 6.2 Non-standard residues in protein, DNA, RNA chains [i](#)

There are no non-standard protein/DNA/RNA residues in this entry.

### 6.3 Carbohydrates [i](#)

There are no monosaccharides in this entry.

### 6.4 Ligands [i](#)

In the following table, the Atoms column lists the number of modelled atoms in the group and the number defined in the chemical component dictionary. The B-factors column lists the minimum, median, 95<sup>th</sup> percentile and maximum values of B factors of atoms in the group. The column labelled ‘Q< 0.9’ lists the number of atoms with occupancy less than 0.9.

Mol	Type	Chain	Res	Atoms	RSCC	RSR	B-factors( $\text{\AA}^2$ )	Q<0.9
3	CL	A	402	1/1	0.90	0.15	73,73,73,73	0
2	MG	B	401	1/1	0.96	0.07	30,30,30,30	0
2	MG	A	401	1/1	0.98	0.05	30,30,30,30	0

## 6.5 Other polymers [i](#)

There are no such residues in this entry.