



Full wwPDB X-ray Structure Validation Report ⓘ

May 26, 2020 – 10:04 pm BST

PDB ID : 1GIN
Title : CRYSTAL STRUCTURE OF ADENYLOSUCCINATE SYNTHETASE FROM ESCHERICHIA COLI COMPLEXED WITH GDP, IMP, HADACIDIN, NO₃⁻, AND MG₂⁺. DATA COLLECTED AT 298K (PH 6.5).
Authors : Poland, B.W.; Fromm, H.J.; Honzatko, R.B.
Deposited on : 1996-06-18
Resolution : 2.80 Å(reported)

This is a Full wwPDB X-ray Structure Validation Report for a publicly released PDB entry.

We welcome your comments at validation@mail.wwpdb.org

A user guide is available at

<https://www.wwpdb.org/validation/2017/XrayValidationReportHelp>

with specific help available everywhere you see the ⓘ symbol.

The following versions of software and data (see [references ⓘ](#)) were used in the production of this report:

MolProbity : 4.02b-467
Mogul : 1.8.5 (274361), CSD as541be (2020)
Xtriage (Phenix) : 1.13
EDS : 2.11
buster-report : 1.1.7 (2018)
Percentile statistics : 20191225.v01 (using entries in the PDB archive December 25th 2019)
Refmac : 5.8.0158
CCP4 : 7.0.044 (Gargrove)
Ideal geometry (proteins) : Engh & Huber (2001)
Ideal geometry (DNA, RNA) : Parkinson et al. (1996)
Validation Pipeline (wwPDB-VP) : 2.11

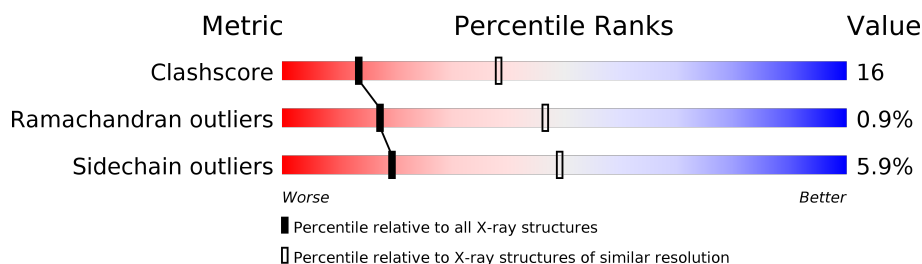
1 Overall quality at a glance

The following experimental techniques were used to determine the structure:

X-RAY DIFFRACTION

The reported resolution of this entry is 2.80 Å.

Percentile scores (ranging between 0-100) for global validation metrics of the entry are shown in the following graphic. The table shows the number of entries on which the scores are based.



Metric	Whole archive (#Entries)	Similar resolution (#Entries, resolution range(Å))
Clashscore	141614	3569 (2.80-2.80)
Ramachandran outliers	138981	3498 (2.80-2.80)
Sidechain outliers	138945	3500 (2.80-2.80)

The table below summarises the geometric issues observed across the polymeric chains and their fit to the electron density. The red, orange, yellow and green segments on the lower bar indicate the fraction of residues that contain outliers for ≥ 3 , 2, 1 and 0 types of geometric quality criteria respectively. A grey segment represents the fraction of residues that are not modelled. The numeric value for each fraction is indicated below the corresponding segment, with a dot representing fractions $\leq 5\%$.

Mol	Chain	Length	Quality of chain
1	A	431	

2 Entry composition [i](#)

There are 7 unique types of molecules in this entry. The entry contains 4640 atoms, of which 1093 are hydrogens and 0 are deuteriums.

In the tables below, the ZeroOcc column contains the number of atoms modelled with zero occupancy, the AltConf column contains the number of residues with at least one atom in alternate conformation and the Trace column contains the number of residues modelled with at most 2 atoms.

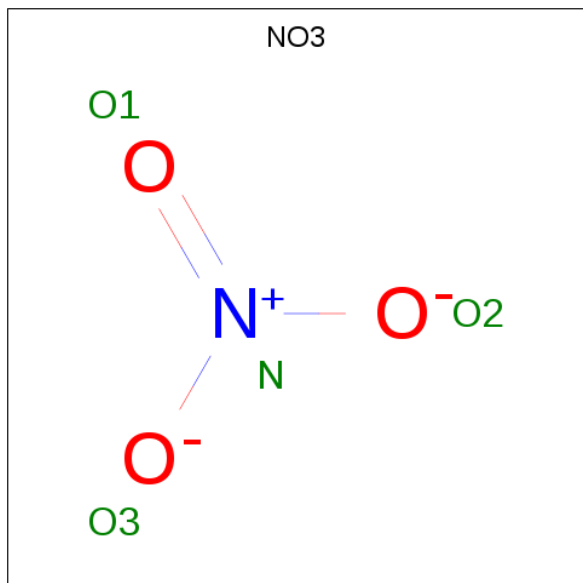
- Molecule 1 is a protein called ADENYLOSUCCINATE SYNTHETASE.

Mol	Chain	Residues	Atoms						ZeroOcc	AltConf	Trace
1	A	431	Total	C	H	N	O	S	0	0	0
			4067	2092	746	576	640	13			

- Molecule 2 is MAGNESIUM ION (three-letter code: MG) (formula: Mg).

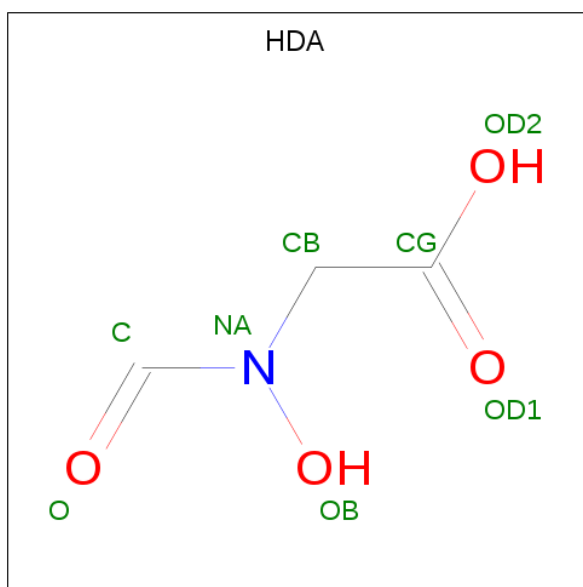
Mol	Chain	Residues	Atoms		ZeroOcc	AltConf
2	A	1	Total	Mg	0	0
			1	1		

- Molecule 3 is NITRATE ION (three-letter code: NO3) (formula: NO₃).



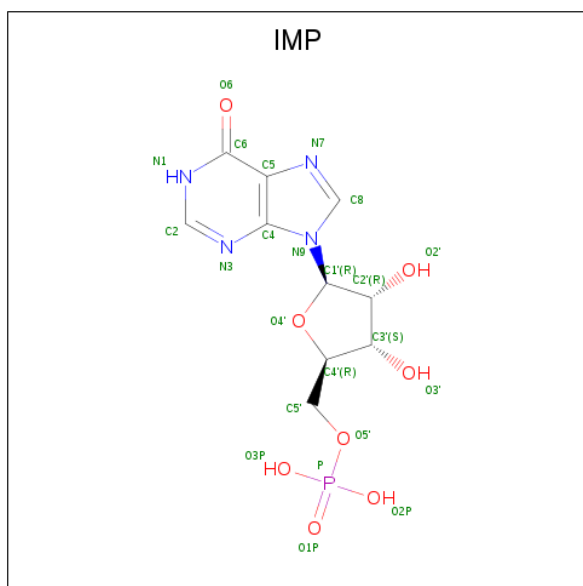
Mol	Chain	Residues	Atoms			ZeroOcc	AltConf
3	A	1	Total	N	O	0	0
			4	1	3		

- Molecule 4 is HADACIDIN (three-letter code: HDA) (formula: C₃H₅NO₄).



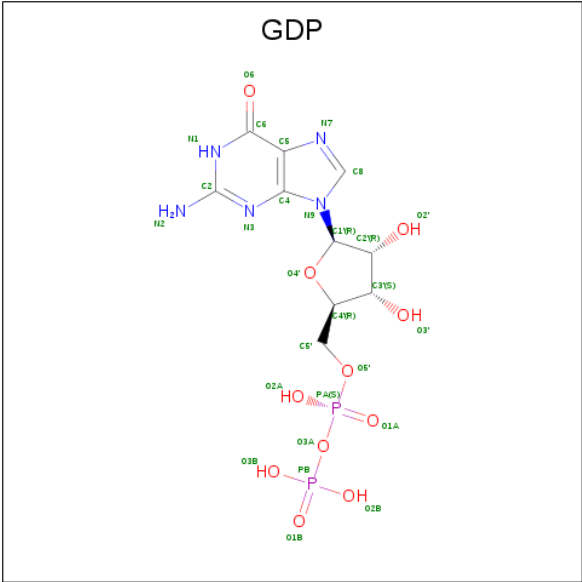
Mol	Chain	Residues	Atoms					ZeroOcc	AltConf
4	A	1	Total	C	H	N	O	0	0
			9	3	1	1	4		

- Molecule 5 is INOSINIC ACID (three-letter code: IMP) (formula: $C_{10}H_{13}N_4O_8P$).



Mol	Chain	Residues	Atoms						ZeroOcc	AltConf
5	A	1	Total	C	H	N	O	P	0	0
			33	10	10	4	8	1		

- Molecule 6 is GUANOSINE-5'-DIPHOSPHATE (three-letter code: GDP) (formula: $C_{10}H_{15}N_5O_{11}P_2$).



Mol	Chain	Residues	Atoms						ZeroOcc	AltConf
6	A	1	Total	C	H	N	O	P	0	0
			40	10	12	5	11	2		

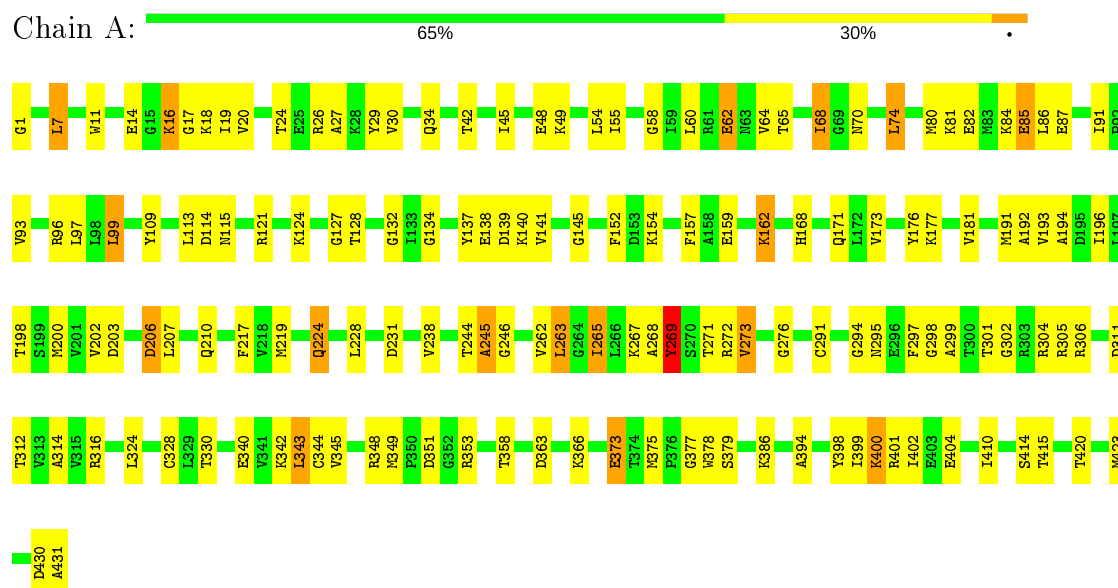
- Molecule 7 is water.

Mol	Chain	Residues	Atoms			ZeroOcc	AltConf
7	A	162	Total	H	O	0	0
			486	324	162		

3 Residue-property plots [i](#)

These plots are drawn for all protein, RNA and DNA chains in the entry. The first graphic for a chain summarises the proportions of the various outlier classes displayed in the second graphic. The second graphic shows the sequence view annotated by issues in geometry. Residues are color-coded according to the number of geometric quality criteria for which they contain at least one outlier: green = 0, yellow = 1, orange = 2 and red = 3 or more. Stretches of 2 or more consecutive residues without any outlier are shown as a green connector. Residues present in the sample, but not in the model, are shown in grey.

- Molecule 1: ADENYLOSUCCINATE SYNTHETASE



4 Data and refinement statistics

Property	Value	Source
Space group	P 32 2 1	Depositor
Cell constants a, b, c, α , β , γ	81.42Å 81.42Å 158.71Å 90.00° 90.00° 120.00°	Depositor
Resolution (Å)	5.00 – 2.80 15.85 – 2.13	Depositor EDS
% Data completeness (in resolution range)	(Not available) (5.00-2.80) 89.8 (15.85-2.13)	Depositor EDS
R_{merge}	0.09	Depositor
R_{sym}	(Not available)	Depositor
$\langle I/\sigma(I) \rangle$ ¹	0.00 (at 2.12Å)	Xtriage
Refinement program	X-PLOR	Depositor
R, R_{free}	0.188 , 0.232 0.199 , (Not available)	Depositor DCC
R_{free} test set	No test flags present.	wwPDB-VP
Wilson B-factor (Å ²)	23.9	Xtriage
Anisotropy	0.147	Xtriage
Bulk solvent k_{sol} (e/Å ³), B_{sol} (Å ²)	0.35 , 78.5	EDS
L-test for twinning ²	$\langle L \rangle = 0.47$, $\langle L^2 \rangle = 0.30$	Xtriage
Estimated twinning fraction	0.041 for -h,-k,l	Xtriage
F_o, F_c correlation	0.88	EDS
Total number of atoms	4640	wwPDB-VP
Average B, all atoms (Å ²)	23.0	wwPDB-VP

Xtriage's analysis on translational NCS is as follows: *The largest off-origin peak in the Patterson function is 5.19% of the height of the origin peak. No significant pseudotranslation is detected.*

¹ Intensities estimated from amplitudes.

² Theoretical values of $\langle |L| \rangle$, $\langle L^2 \rangle$ for acentric reflections are 0.5, 0.333 respectively for untwinned datasets, and 0.375, 0.2 for perfectly twinned datasets.

5 Model quality

5.1 Standard geometry

Bond lengths and bond angles in the following residue types are not validated in this section: GDP, IMP, MG, HDA, NO3

The Z score for a bond length (or angle) is the number of standard deviations the observed value is removed from the expected value. A bond length (or angle) with $|Z| > 5$ is considered an outlier worth inspection. RMSZ is the root-mean-square of all Z scores of the bond lengths (or angles).

Mol	Chain	Bond lengths		Bond angles	
		RMSZ	$\# Z > 5$	RMSZ	$\# Z > 5$
1	A	0.64	0/3379	0.90	6/4577 (0.1%)

Chiral center outliers are detected by calculating the chiral volume of a chiral center and verifying if the center is modelled as a planar moiety or with the opposite hand. A planarity outlier is detected by checking planarity of atoms in a peptide group, atoms in a mainchain group or atoms of a sidechain that are expected to be planar.

Mol	Chain	#Chirality outliers	#Planarity outliers
1	A	0	1

There are no bond length outliers.

All (6) bond angle outliers are listed below:

Mol	Chain	Res	Type	Atoms	Z	Observed($^{\circ}$)	Ideal($^{\circ}$)
1	A	269	TYR	O-C-N	-13.32	101.39	122.70
1	A	265	ILE	C-N-CA	9.62	145.75	121.70
1	A	74	LEU	CA-CB-CG	5.79	128.63	115.30
1	A	265	ILE	O-C-N	-5.39	114.07	122.70
1	A	373	GLU	N-CA-C	-5.37	96.51	111.00
1	A	7	LEU	CA-CB-CG	5.05	126.92	115.30

There are no chirality outliers.

All (1) planarity outliers are listed below:

Mol	Chain	Res	Type	Group
1	A	269	TYR	Mainchain

5.2 Too-close contacts ⓘ

In the following table, the Non-H and H(model) columns list the number of non-hydrogen atoms and hydrogen atoms in the chain respectively. The H(added) column lists the number of hydrogen atoms added and optimized by MolProbity. The Clashes column lists the number of clashes within the asymmetric unit, whereas Symm-Clashes lists symmetry related clashes.

Mol	Chain	Non-H	H(model)	H(added)	Clashes	Symm-Clashes
1	A	3321	746	3326	107	3
2	A	1	0	0	0	0
3	A	4	0	0	0	0
4	A	8	1	4	1	0
5	A	23	10	11	5	0
6	A	28	12	12	1	0
7	A	162	324	0	4	1
All	All	3547	1093	3353	108	4

The all-atom clashscore is defined as the number of clashes found per 1000 atoms (including hydrogen atoms). The all-atom clashscore for this structure is 16.

All (108) close contacts within the same asymmetric unit are listed below, sorted by their clash magnitude.

Atom-1	Atom-2	Interatomic distance (Å)	Clash overlap (Å)
1:A:121:ARG:HH21	1:A:124:LYS:HB3	1.30	0.97
1:A:399:ILE:HG23	1:A:410:ILE:HD12	1.48	0.95
1:A:291:CYS:SG	1:A:304:ARG:CZ	2.59	0.90
1:A:273:VAL:HG13	1:A:305:ARG:HG2	1.54	0.88
1:A:267:LYS:HG2	1:A:267:LYS:O	1.77	0.85
1:A:291:CYS:SG	1:A:304:ARG:NE	2.53	0.81
1:A:27:ALA:O	1:A:64:VAL:HG22	1.87	0.74
1:A:299:ALA:HB3	4:A:438:HDA:O	1.89	0.72
1:A:121:ARG:NH2	1:A:124:LYS:HB3	2.05	0.71
1:A:68:ILE:HD11	1:A:74:LEU:HD22	1.71	0.71
1:A:30:VAL:HG23	1:A:64:VAL:HG11	1.73	0.71
1:A:291:CYS:SG	1:A:304:ARG:NH2	2.64	0.70
1:A:351:ASP:OD1	1:A:353:ARG:HB3	1.92	0.70
1:A:206:ASP:O	1:A:210:GLN:HG2	1.92	0.68
1:A:74:LEU:HD21	1:A:99:LEU:HD22	1.74	0.67
1:A:42:THR:HB	6:A:432:GDP:H3'	1.77	0.67
1:A:24:THR:HG21	1:A:30:VAL:HG22	1.77	0.65
1:A:55:ILE:HD12	1:A:82:GLU:HG2	1.77	0.65
1:A:363:ASP:O	1:A:366:LYS:HE3	1.97	0.64
1:A:127:GLY:O	5:A:440:IMP:H3'	1.99	0.62

Continued on next page...

Continued from previous page...

Atom-1	Atom-2	Interatomic distance (Å)	Clash overlap (Å)
1:A:312:THR:HG22	1:A:316:ARG:HH21	1.65	0.60
1:A:159:GLU:O	1:A:162:LYS:HB3	2.01	0.60
1:A:378:TRP:HB3	1:A:394:ALA:HB3	1.83	0.59
1:A:113:LEU:HD11	1:A:168:HIS:CD2	2.37	0.59
1:A:81:LYS:O	1:A:85:GLU:HG2	2.02	0.58
1:A:68:ILE:CD1	1:A:74:LEU:HD22	2.34	0.58
1:A:97:LEU:HB3	1:A:200:MET:HE2	1.84	0.58
1:A:398:TYR:O	1:A:402:ILE:HG13	2.04	0.57
1:A:173:VAL:O	1:A:177:LYS:HA	2.04	0.57
1:A:349:MET:HG3	1:A:353:ARG:NH1	2.20	0.57
1:A:87:GLU:HA	1:A:91:ILE:O	2.05	0.57
1:A:297:PHE:CZ	1:A:304:ARG:NH2	2.73	0.56
1:A:128:THR:HG22	5:A:440:IMP:H5'2	1.87	0.56
1:A:45:ILE:HG22	7:A:491:HOH:O	2.05	0.56
1:A:109:TYR:HA	1:A:181:VAL:HG21	1.88	0.56
1:A:312:THR:HB	1:A:344:CYS:O	2.06	0.56
1:A:330:THR:HA	1:A:414:SER:HB3	1.88	0.55
1:A:74:LEU:CD2	1:A:99:LEU:HD22	2.37	0.55
1:A:54:LEU:HD21	1:A:74:LEU:CD1	2.38	0.54
5:A:440:IMP:H8	5:A:440:IMP:O3P	2.08	0.54
1:A:171:GLN:NE2	1:A:176:TYR:HE2	2.06	0.53
1:A:224:GLN:HB3	1:A:228:LEU:HD12	1.91	0.53
1:A:267:LYS:C	1:A:269:TYR:H	2.11	0.53
1:A:267:LYS:O	1:A:269:TYR:N	2.41	0.53
1:A:415:THR:HG21	1:A:423:MET:CE	2.39	0.52
1:A:340:GLU:HA	1:A:377:GLY:N	2.25	0.52
1:A:62:GLU:HB2	1:A:96:ARG:NH2	2.24	0.52
1:A:14:GLU:HA	1:A:267:LYS:HE3	1.91	0.52
1:A:267:LYS:HA	1:A:330:THR:OG1	2.10	0.51
1:A:273:VAL:CG1	1:A:305:ARG:HG2	2.32	0.51
1:A:114:ASP:HB2	1:A:132:GLY:HA2	1.92	0.51
1:A:271:THR:HA	1:A:306:ARG:O	2.11	0.51
1:A:312:THR:CG2	1:A:316:ARG:HH21	2.23	0.50
1:A:314:ALA:HA	1:A:358:THR:HG21	1.94	0.49
1:A:312:THR:HG22	1:A:316:ARG:NH2	2.26	0.49
1:A:154:LYS:HA	1:A:157:PHE:HB3	1.93	0.49
1:A:18:LYS:HB2	7:A:571:HOH:O	2.13	0.49
1:A:24:THR:HG21	1:A:30:VAL:CG2	2.43	0.48
1:A:386:LYS:HD3	1:A:420:THR:O	2.14	0.48
1:A:19:ILE:HG12	1:A:328:CYS:SG	2.53	0.48
1:A:244:THR:O	1:A:246:GLY:N	2.47	0.48

Continued on next page...

Continued from previous page...

Atom-1	Atom-2	Interatomic distance (Å)	Clash overlap (Å)
1:A:68:ILE:HG12	1:A:68:ILE:O	2.13	0.48
1:A:152:PHE:CE1	1:A:198:THR:HB	2.49	0.48
1:A:304:ARG:HG3	1:A:305:ARG:N	2.30	0.47
1:A:154:LYS:HG2	1:A:191:MET:SD	2.56	0.46
1:A:343:LEU:HD23	1:A:343:LEU:H	1.81	0.46
1:A:228:LEU:O	1:A:238:VAL:HB	2.16	0.46
1:A:16:LYS:HD3	1:A:16:LYS:H	1.81	0.46
1:A:202:VAL:HG22	1:A:203:ASP:N	2.31	0.45
1:A:11:TRP:CG	1:A:272:ARG:HG3	2.51	0.45
1:A:54:LEU:HD21	1:A:74:LEU:HD13	1.97	0.45
1:A:26:ARG:O	1:A:217:PHE:HD2	2.00	0.45
1:A:349:MET:HG3	1:A:353:ARG:CZ	2.47	0.45
1:A:340:GLU:HB2	1:A:375:MET:O	2.16	0.45
1:A:192:ALA:HB3	7:A:457:HOH:O	2.17	0.45
1:A:298:GLY:O	1:A:302:GLY:N	2.45	0.45
1:A:68:ILE:CG1	1:A:68:ILE:O	2.65	0.45
1:A:224:GLN:HG3	5:A:440:IMP:C5	2.46	0.45
1:A:311:ASP:HA	1:A:344:CYS:HB3	1.98	0.45
1:A:20:VAL:HG13	1:A:219:MET:SD	2.57	0.44
1:A:415:THR:HG21	1:A:423:MET:HE3	2.00	0.44
1:A:54:LEU:HD21	1:A:74:LEU:HD12	2.00	0.44
1:A:16:LYS:HD3	1:A:16:LYS:N	2.32	0.44
1:A:386:LYS:C	1:A:423:MET:HG2	2.37	0.44
1:A:400:LYS:HD2	1:A:404:GLU:HG3	2.00	0.44
1:A:263:LEU:HD13	1:A:265:ILE:HD13	1.98	0.43
1:A:1:GLY:N	1:A:431:ALA:O	2.32	0.43
1:A:193:VAL:O	1:A:196:ILE:N	2.52	0.43
1:A:262:VAL:HG12	1:A:324:LEU:HD23	1.99	0.43
1:A:121:ARG:NE	1:A:124:LYS:O	2.52	0.42
1:A:49:LYS:NZ	7:A:534:HOH:O	2.51	0.42
1:A:373:GLU:OE2	1:A:401:ARG:NE	2.52	0.42
1:A:134:GLY:O	1:A:138:GLU:HG3	2.19	0.42
1:A:80:MET:CE	1:A:196:ILE:HG21	2.49	0.42
1:A:30:VAL:HG21	1:A:58:GLY:HA3	2.02	0.41
1:A:193:VAL:O	1:A:194:ALA:C	2.58	0.41
1:A:86:LEU:HB2	1:A:93:VAL:HG21	2.02	0.41
1:A:128:THR:HA	5:A:440:IMP:H3'	2.01	0.41
1:A:244:THR:O	1:A:245:ALA:C	2.58	0.41
1:A:139:ASP:HB3	1:A:145:GLY:CA	2.51	0.41
1:A:29:TYR:CD1	1:A:65:THR:HB	2.56	0.41
1:A:400:LYS:O	1:A:400:LYS:HD3	2.21	0.41

Continued on next page...

Continued from previous page...

Atom-1	Atom-2	Interatomic distance (Å)	Clash overlap (Å)
1:A:17:GLY:O	1:A:18:LYS:C	2.59	0.40
1:A:272:ARG:CZ	1:A:276:GLY:HA3	2.51	0.40
1:A:137:TYR:O	1:A:140:LYS:HB3	2.20	0.40
1:A:202:VAL:HG21	1:A:207:LEU:HD12	2.04	0.40
1:A:345:VAL:HG11	1:A:373:GLU:OE1	2.22	0.40
1:A:294:GLY:O	1:A:295:ASN:C	2.59	0.40

All (4) symmetry-related close contacts are listed below. The label for Atom-2 includes the symmetry operator and encoded unit-cell translations to be applied.

Atom-1	Atom-2	Interatomic distance (Å)	Clash overlap (Å)
1:A:48:GLU:OE2	1:A:348:ARG:HH22[2_664]	1.45	0.15
7:A:491:HOH:H1	7:A:547:HOH:O[2_664]	1.50	0.10
1:A:140:LYS:HZ2	1:A:231:ASP:OD1[6_555]	1.55	0.05
1:A:48:GLU:OE1	1:A:348:ARG:HH12[2_664]	1.56	0.04

5.3 Torsion angles [i](#)

5.3.1 Protein backbone [i](#)

In the following table, the Percentiles column shows the percent Ramachandran outliers of the chain as a percentile score with respect to all X-ray entries followed by that with respect to entries of similar resolution.

The Analysed column shows the number of residues for which the backbone conformation was analysed, and the total number of residues.

Mol	Chain	Analysed	Favoured	Allowed	Outliers	Percentiles	
1	A	429/431 (100%)	394 (92%)	31 (7%)	4 (1%)	17	46

All (4) Ramachandran outliers are listed below:

Mol	Chain	Res	Type
1	A	245	ALA
1	A	268	ALA
1	A	224	GLN
1	A	70	ASN

5.3.2 Protein sidechains ⓘ

In the following table, the Percentiles column shows the percent sidechain outliers of the chain as a percentile score with respect to all X-ray entries followed by that with respect to entries of similar resolution.

The Analysed column shows the number of residues for which the sidechain conformation was analysed, and the total number of residues.

Mol	Chain	Analysed	Rotameric	Outliers	Percentiles	
1	A	353/353 (100%)	332 (94%)	21 (6%)	19	49

All (21) residues with a non-rotameric sidechain are listed below:

Mol	Chain	Res	Type
1	A	7	LEU
1	A	16	LYS
1	A	34	GLN
1	A	60	LEU
1	A	62	GLU
1	A	68	ILE
1	A	84	LYS
1	A	85	GLU
1	A	99	LEU
1	A	115	ASN
1	A	141	VAL
1	A	162	LYS
1	A	206	ASP
1	A	263	LEU
1	A	273	VAL
1	A	301	THR
1	A	342	LYS
1	A	343	LEU
1	A	379	SER
1	A	400	LYS
1	A	430	ASP

Some sidechains can be flipped to improve hydrogen bonding and reduce clashes. All (9) such sidechains are listed below:

Mol	Chain	Res	Type
1	A	3	ASN
1	A	115	ASN
1	A	168	HIS
1	A	171	GLN

Continued on next page...

Continued from previous page...

Mol	Chain	Res	Type
1	A	174	ASN
1	A	213	GLN
1	A	293	GLN
1	A	393	GLN
1	A	397	ASN

5.3.3 RNA ⓘ

There are no RNA molecules in this entry.

5.4 Non-standard residues in protein, DNA, RNA chains ⓘ

There are no non-standard protein/DNA/RNA residues in this entry.

5.5 Carbohydrates ⓘ

There are no carbohydrates in this entry.

5.6 Ligand geometry ⓘ

Of 5 ligands modelled in this entry, 1 is monoatomic - leaving 4 for Mogul analysis.

In the following table, the Counts columns list the number of bonds (or angles) for which Mogul statistics could be retrieved, the number of bonds (or angles) that are observed in the model and the number of bonds (or angles) that are defined in the Chemical Component Dictionary. The Link column lists molecule types, if any, to which the group is linked. The Z score for a bond length (or angle) is the number of standard deviations the observed value is removed from the expected value. A bond length (or angle) with $|Z| > 2$ is considered an outlier worth inspection. RMSZ is the root-mean-square of all Z scores of the bond lengths (or angles).

Mol	Type	Chain	Res	Link	Bond lengths			Bond angles		
					Counts	RMSZ	$\# Z > 2$	Counts	RMSZ	$\# Z > 2$
6	GDP	A	432	2	24,30,30	1.50	4 (16%)	31,47,47	2.63	11 (35%)
5	IMP	A	440	-	21,25,25	2.28	6 (28%)	23,38,38	2.58	6 (26%)
4	HDA	A	438	2	2,7,7	3.78	1 (50%)	1,8,8	1.81	0
3	NO3	A	433	2	1,3,3	1.18	0	0,3,3	0.00	-

In the following table, the Chirals column lists the number of chiral outliers, the number of chiral centers analysed, the number of these observed in the model and the number defined in the Chemical Component Dictionary. Similar counts are reported in the Torsion and Rings columns.

'-' means no outliers of that kind were identified.

Mol	Type	Chain	Res	Link	Chirals	Torsions	Rings
5	IMP	A	440	-	-	3/6/26/26	0/3/3/3
6	GDP	A	432	2	-	6/12/32/32	0/3/3/3
4	HDA	A	438	2	-	0/1/6/6	-

All (11) bond length outliers are listed below:

Mol	Chain	Res	Type	Atoms	Z	Observed(Å)	Ideal(Å)
5	A	440	IMP	O4'-C1'	6.55	1.50	1.41
4	A	438	HDA	C-NA	5.33	1.42	1.34
5	A	440	IMP	C6-N1	4.29	1.40	1.33
5	A	440	IMP	C4-N3	-3.62	1.30	1.35
6	A	432	GDP	O4'-C1'	3.55	1.46	1.41
6	A	432	GDP	C2'-C1'	2.71	1.57	1.53
5	A	440	IMP	C6-C5	2.61	1.45	1.41
6	A	432	GDP	C6-N1	2.44	1.37	1.33
5	A	440	IMP	C8-N7	-2.36	1.30	1.34
5	A	440	IMP	C5-C4	-2.13	1.35	1.40
6	A	432	GDP	PB-O3B	-2.11	1.46	1.54

All (17) bond angle outliers are listed below:

Mol	Chain	Res	Type	Atoms	Z	Observed(°)	Ideal(°)
5	A	440	IMP	N3-C2-N1	-7.11	117.56	128.68
6	A	432	GDP	O3'-C3'-C4'	-6.51	92.22	111.05
6	A	432	GDP	C5-C6-N1	-6.30	114.81	123.43
5	A	440	IMP	C2-N1-C6	5.48	125.06	115.88
5	A	440	IMP	O4'-C1'-C2'	-5.41	99.02	106.93
6	A	432	GDP	C6-N1-C2	5.08	124.00	115.93
6	A	432	GDP	N2-C2-N3	4.75	125.54	117.79
6	A	432	GDP	O4'-C1'-C2'	-4.08	100.96	106.93
5	A	440	IMP	C6-C5-C4	-3.63	117.33	120.80
6	A	432	GDP	N3-C2-N1	-3.57	122.45	127.22
6	A	432	GDP	N2-C2-N1	-3.39	111.97	117.25
5	A	440	IMP	C3'-C2'-C1'	3.16	105.73	100.98
6	A	432	GDP	O3B-PB-O2B	2.57	117.46	107.64
6	A	432	GDP	PA-O3A-PB	-2.51	124.21	132.83
5	A	440	IMP	O2P-P-O1P	2.39	120.04	110.68
6	A	432	GDP	C2'-C3'-C4'	-2.38	98.02	102.64
6	A	432	GDP	C6-C5-C4	-2.26	118.64	120.80

There are no chirality outliers.

All (9) torsion outliers are listed below:

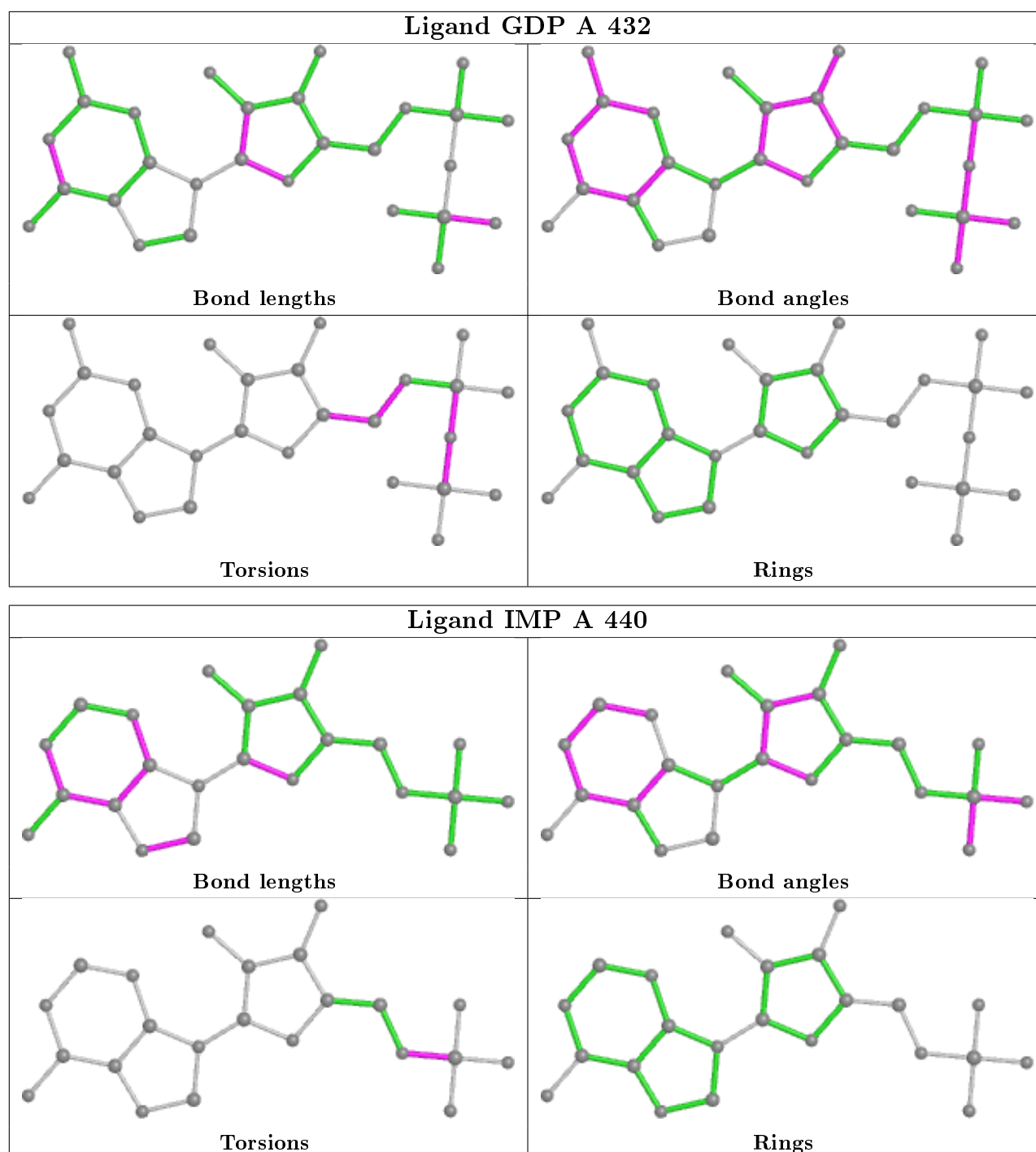
Mol	Chain	Res	Type	Atoms
5	A	440	IMP	C5'-O5'-P-O2P
5	A	440	IMP	C5'-O5'-P-O3P
6	A	432	GDP	PA-O3A-PB-O2B
6	A	432	GDP	O4'-C4'-C5'-O5'
6	A	432	GDP	C3'-C4'-C5'-O5'
5	A	440	IMP	C5'-O5'-P-O1P
6	A	432	GDP	C4'-C5'-O5'-PA
6	A	432	GDP	PB-O3A-PA-O2A
6	A	432	GDP	PA-O3A-PB-O1B

There are no ring outliers.

3 monomers are involved in 7 short contacts:

Mol	Chain	Res	Type	Clashes	Symm-Clashes
6	A	432	GDP	1	0
5	A	440	IMP	5	0
4	A	438	HDA	1	0

The following is a two-dimensional graphical depiction of Mogul quality analysis of bond lengths, bond angles, torsion angles, and ring geometry for all instances of the Ligand of Interest. In addition, ligands with molecular weight > 250 and outliers as shown on the validation Tables will also be included. For torsion angles, if less than 5% of the Mogul distribution of torsion angles is within 10 degrees of the torsion angle in question, then that torsion angle is considered an outlier. Any bond that is central to one or more torsion angles identified as an outlier by Mogul will be highlighted in the graph. For rings, the root-mean-square deviation (RMSD) between the ring in question and similar rings identified by Mogul is calculated over all ring torsion angles. If the average RMSD is greater than 60 degrees and the minimal RMSD between the ring in question and any Mogul-identified rings is also greater than 60 degrees, then that ring is considered an outlier. The outliers are highlighted in purple. The color gray indicates Mogul did not find sufficient equivalents in the CSD to analyse the geometry.



5.7 Other polymers [i](#)

There are no such residues in this entry.

5.8 Polymer linkage issues [i](#)

There are no chain breaks in this entry.

6 Fit of model and data ⓘ

6.1 Protein, DNA and RNA chains ⓘ

Unable to reproduce the depositors R factor - this section is therefore empty.

6.2 Non-standard residues in protein, DNA, RNA chains ⓘ

Unable to reproduce the depositors R factor - this section is therefore empty.

6.3 Carbohydrates ⓘ

Unable to reproduce the depositors R factor - this section is therefore empty.

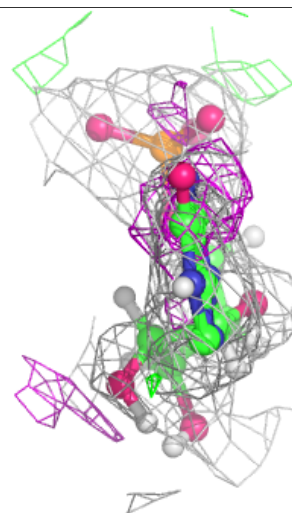
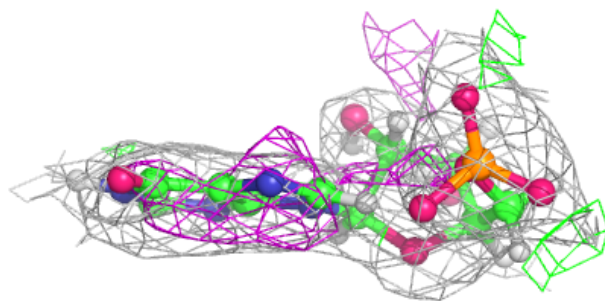
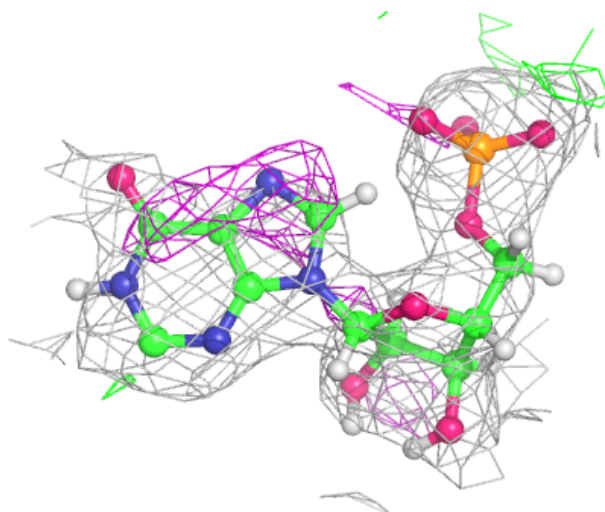
6.4 Ligands ⓘ

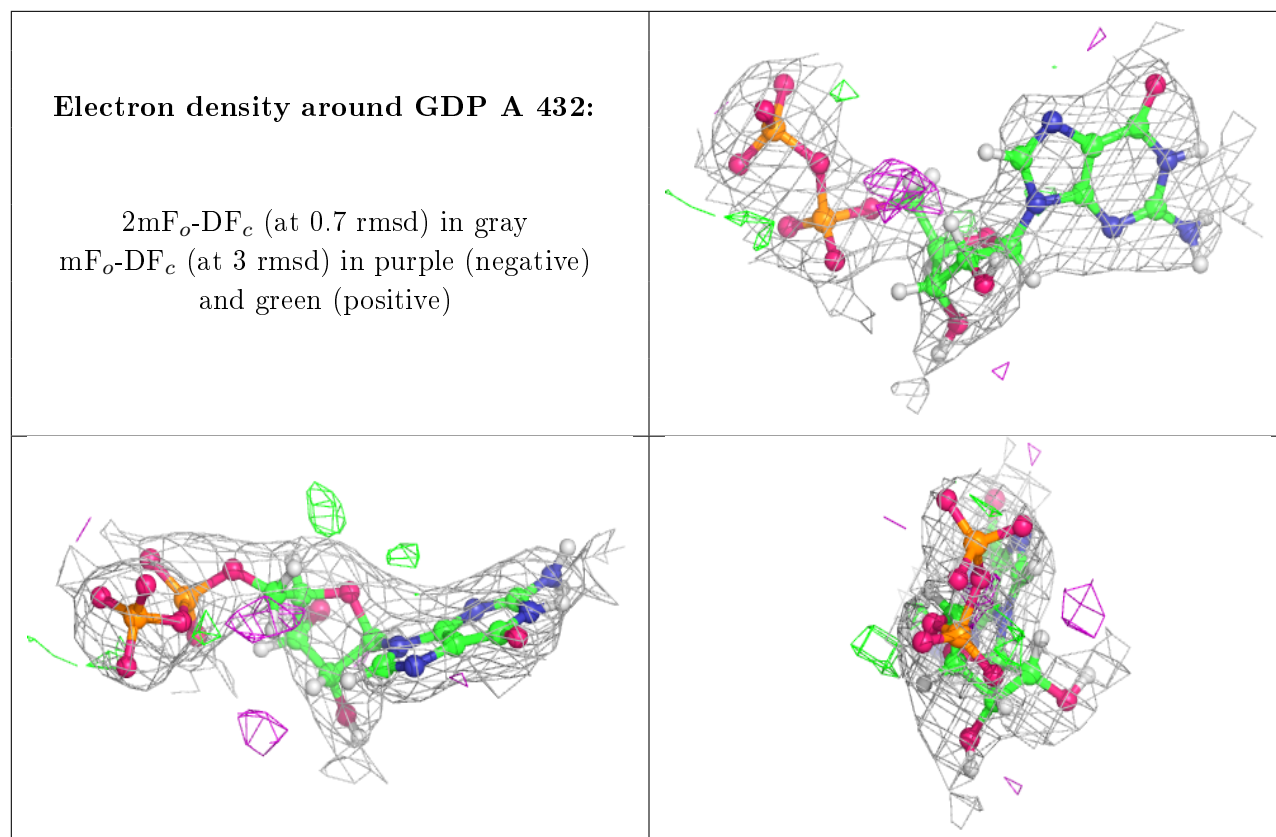
Unable to reproduce the depositors R factor - this section is therefore empty.

The following is a graphical depiction of the model fit to experimental electron density of all instances of the Ligand of Interest. In addition, ligands with molecular weight > 250 and outliers as shown on the geometry validation Tables will also be included. Each fit is shown from different orientation to approximate a three-dimensional view.

Electron density around IMP A 440:

$2mF_o-DF_c$ (at 0.7 rmsd) in gray
 mF_o-DF_c (at 3 rmsd) in purple (negative)
and green (positive)





6.5 Other polymers [i](#)

Unable to reproduce the depositors R factor - this section is therefore empty.