



Full wwPDB X-ray Structure Validation Report ⓘ

May 14, 2020 – 05:48 am BST

PDB ID : 1GP9
Title : A New Crystal Form of the Nk1 Splice Variant of Hgf/Sf Demonstrates Extensive Hinge Movement and Suggests that the Nk1 Dimer Originates by Domain Swapping
Authors : Watanabe, K.; Chirgadze, D.Y.; Lietha, D.; Gherardi, E.; Blundell, T.L.
Deposited on : 2001-10-31
Resolution : 2.50 Å(reported)

This is a Full wwPDB X-ray Structure Validation Report for a publicly released PDB entry.

We welcome your comments at validation@mail.wwpdb.org

A user guide is available at

<https://www.wwpdb.org/validation/2017/XrayValidationReportHelp>

with specific help available everywhere you see the ⓘ symbol.

The following versions of software and data (see [references ⓘ](#)) were used in the production of this report:

MolProbity : 4.02b-467
Mogul : 1.8.5 (274361), CSD as541be (2020)
Xtriage (Phenix) : 1.13
EDS : 2.11
Percentile statistics : 20191225.v01 (using entries in the PDB archive December 25th 2019)
Refmac : 5.8.0158
CCP4 : 7.0.044 (Gargrove)
Ideal geometry (proteins) : Engh & Huber (2001)
Ideal geometry (DNA, RNA) : Parkinson et al. (1996)
Validation Pipeline (wwPDB-VP) : 2.11

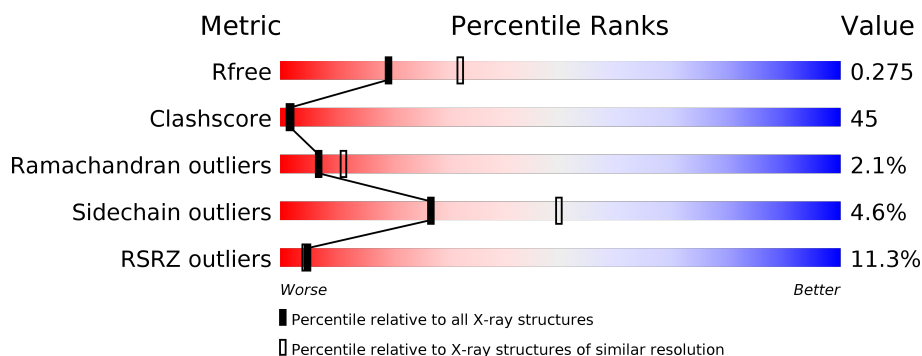
1 Overall quality at a glance

The following experimental techniques were used to determine the structure:

X-RAY DIFFRACTION

The reported resolution of this entry is 2.50 Å.

Percentile scores (ranging between 0-100) for global validation metrics of the entry are shown in the following graphic. The table shows the number of entries on which the scores are based.



Metric	Whole archive (#Entries)	Similar resolution (#Entries, resolution range(Å))
R_{free}	130704	4661 (2.50-2.50)
Clashscore	141614	5346 (2.50-2.50)
Ramachandran outliers	138981	5231 (2.50-2.50)
Sidechain outliers	138945	5233 (2.50-2.50)
RSRZ outliers	127900	4559 (2.50-2.50)

The table below summarises the geometric issues observed across the polymeric chains and their fit to the electron density. The red, orange, yellow and green segments on the lower bar indicate the fraction of residues that contain outliers for ≥ 3 , 2, 1 and 0 types of geometric quality criteria respectively. A grey segment represents the fraction of residues that are not modelled. The numeric value for each fraction is indicated below the corresponding segment, with a dot representing fractions $\leq 5\%$. The upper red bar (where present) indicates the fraction of residues that have poor fit to the electron density. The numeric value is given above the bar.

Mol	Chain	Length	Quality of chain
1	A	177	<div> <div>12%</div> <div>44%</div> <div>48%</div> <div>• • •</div> </div>
1	B	177	<div> <div>8%</div> <div>40%</div> <div>52%</div> <div>• •</div> </div>
1	C	177	<div> <div>13%</div> <div>45%</div> <div>49%</div> <div>• •</div> </div>
1	D	177	<div> <div>11%</div> <div>45%</div> <div>46%</div> <div>5% •</div> </div>

2 Entry composition [i](#)

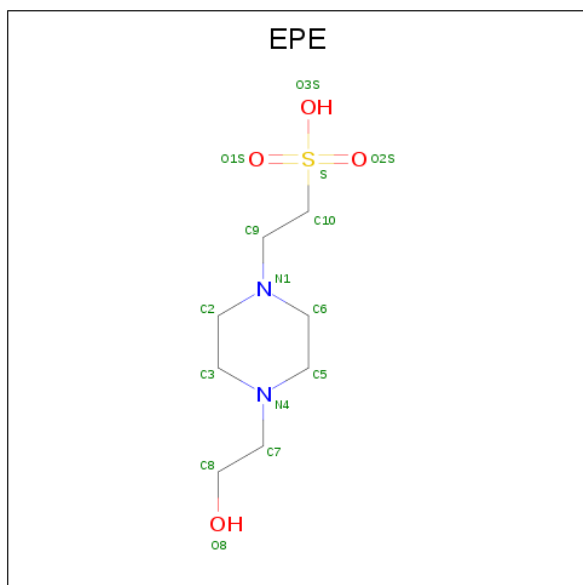
There are 3 unique types of molecules in this entry. The entry contains 5694 atoms, of which 0 are hydrogens and 0 are deuteriums.

In the tables below, the ZeroOcc column contains the number of atoms modelled with zero occupancy, the AltConf column contains the number of residues with at least one atom in alternate conformation and the Trace column contains the number of residues modelled with at most 2 atoms.

- Molecule 1 is a protein called HEPATOCYTE GROWTH FACTOR.

Mol	Chain	Residues	Atoms					ZeroOcc	AltConf	Trace
1	A	170	Total	C	N	O	S	0	0	0
			1367	864	242	249	12			
1	B	170	Total	C	N	O	S	0	0	0
			1367	864	242	249	12			
1	C	171	Total	C	N	O	S	0	0	0
			1379	873	243	251	12			
1	D	170	Total	C	N	O	S	0	0	0
			1350	856	235	247	12			

- Molecule 2 is 4-(2-HYDROXYETHYL)-1-PIPERAZINE ETHANESULFONIC ACID (three-letter code: EPE) (formula: C₈H₁₈N₂O₄S).



Mol	Chain	Residues	Atoms					ZeroOcc	AltConf
2	A	1	Total	C	N	O	S	0	0
			15	8	2	4	1		
2	B	1	Total	C	N	O	S	0	0
			15	8	2	4	1		

Continued on next page...

Continued from previous page...

Mol	Chain	Residues	Atoms					ZeroOcc	AltConf
2	B	1	Total	C	N	O	S	0	0
			15	8	2	4	1		
2	C	1	Total	C	N	O	S	0	0
			15	8	2	4	1		
2	D	1	Total	C	N	O	S	0	0
			15	8	2	4	1		

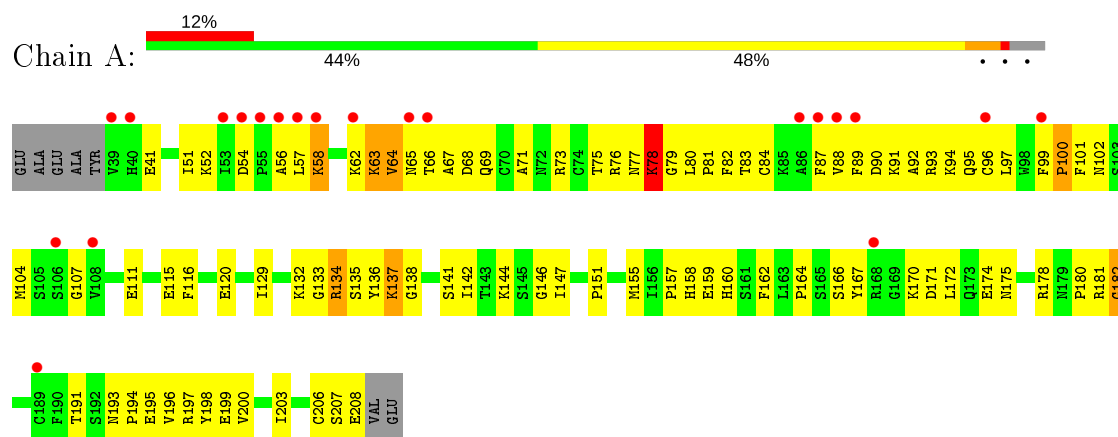
- Molecule 3 is water.

Mol	Chain	Residues	Atoms		ZeroOcc	AltConf
3	A	32	Total	O	0	0
			32	32		
3	B	40	Total	O	0	0
			40	40		
3	C	47	Total	O	0	0
			47	47		
3	D	37	Total	O	0	0
			37	37		

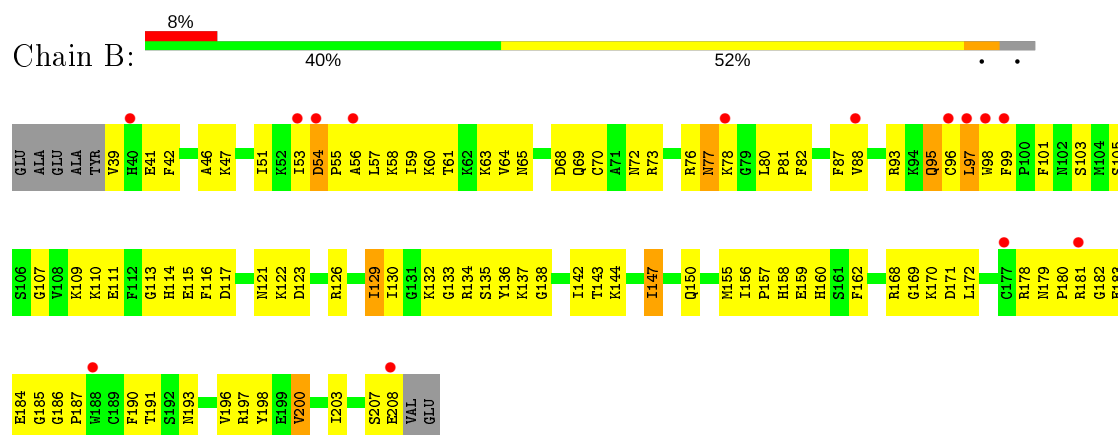
3 Residue-property plots [i](#)

These plots are drawn for all protein, RNA and DNA chains in the entry. The first graphic for a chain summarises the proportions of the various outlier classes displayed in the second graphic. The second graphic shows the sequence view annotated by issues in geometry and electron density. Residues are color-coded according to the number of geometric quality criteria for which they contain at least one outlier: green = 0, yellow = 1, orange = 2 and red = 3 or more. A red dot above a residue indicates a poor fit to the electron density ($RSRZ > 2$). Stretches of 2 or more consecutive residues without any outlier are shown as a green connector. Residues present in the sample, but not in the model, are shown in grey.

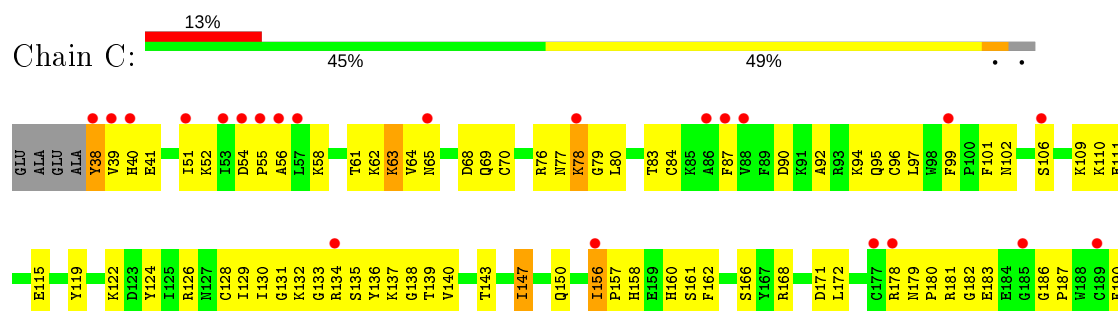
• Molecule 1: HEPATOCYTE GROWTH FACTOR

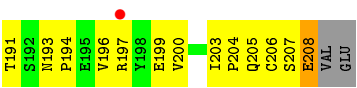


• Molecule 1: HEPATOCYTE GROWTH FACTOR

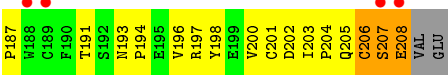
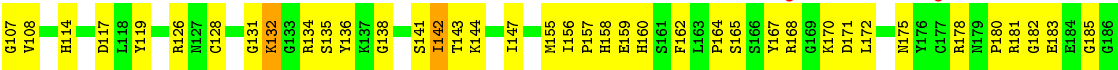
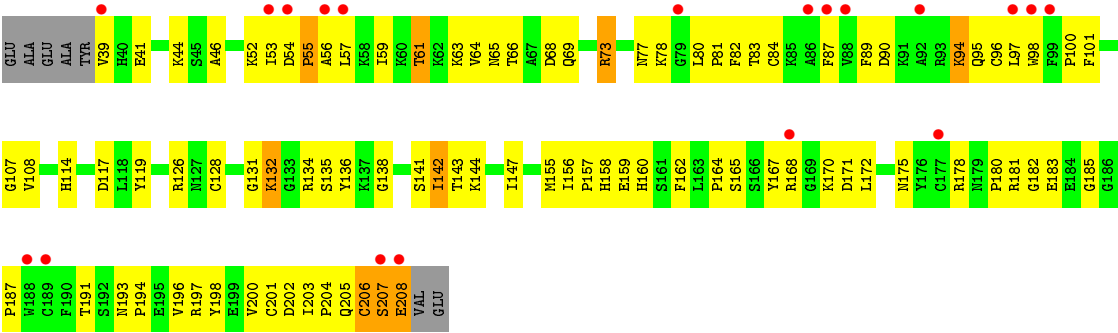


• Molecule 1: HEPATOCYTE GROWTH FACTOR





● Molecule 1: HEPATOCYTE GROWTH FACTOR



4 Data and refinement statistics

Property	Value	Source
Space group	C 2 2 21	Depositor
Cell constants a, b, c, α , β , γ	73.48 Å 78.26 Å 304.46 Å 90.00° 90.00° 90.00°	Depositor
Resolution (Å)	19.92 – 2.50 19.92 – 2.44	Depositor EDS
% Data completeness (in resolution range)	92.1 (19.92-2.50) 92.2 (19.92-2.44)	Depositor EDS
R_{merge}	0.04	Depositor
R_{sym}	(Not available)	Depositor
$\langle I/\sigma(I) \rangle$ ¹	3.58 (at 2.44 Å)	Xtriage
Refinement program	CNS 0.9	Depositor
R, R_{free}	0.237 , 0.288 0.227 , 0.275	Depositor DCC
R_{free} test set	1542 reflections (5.07%)	wwPDB-VP
Wilson B-factor (Å ²)	53.5	Xtriage
Anisotropy	0.239	Xtriage
Bulk solvent k_{sol} (e/Å ³), B_{sol} (Å ²)	0.30 , 47.2	EDS
L-test for twinning ²	$\langle L \rangle = 0.47$, $\langle L^2 \rangle = 0.30$	Xtriage
Estimated twinning fraction	No twinning to report.	Xtriage
F_o, F_c correlation	0.93	EDS
Total number of atoms	5694	wwPDB-VP
Average B, all atoms (Å ²)	55.0	wwPDB-VP

Xtriage's analysis on translational NCS is as follows: *The largest off-origin peak in the Patterson function is 4.23% of the height of the origin peak. No significant pseudotranslation is detected.*

¹Intensities estimated from amplitudes.

²Theoretical values of $\langle |L| \rangle$, $\langle L^2 \rangle$ for acentric reflections are 0.5, 0.333 respectively for untwinned datasets, and 0.375, 0.2 for perfectly twinned datasets.

5 Model quality [i](#)

5.1 Standard geometry [i](#)

Bond lengths and bond angles in the following residue types are not validated in this section: EPE

The Z score for a bond length (or angle) is the number of standard deviations the observed value is removed from the expected value. A bond length (or angle) with $|Z| > 5$ is considered an outlier worth inspection. RMSZ is the root-mean-square of all Z scores of the bond lengths (or angles).

Mol	Chain	Bond lengths		Bond angles	
		RMSZ	$\# Z > 5$	RMSZ	$\# Z > 5$
1	A	0.52	0/1402	0.76	0/1884
1	B	0.52	0/1402	0.75	0/1884
1	C	0.49	0/1415	0.72	0/1902
1	D	0.51	0/1385	0.75	0/1864
All	All	0.51	0/5604	0.75	0/7534

Chiral center outliers are detected by calculating the chiral volume of a chiral center and verifying if the center is modelled as a planar moiety or with the opposite hand. A planarity outlier is detected by checking planarity of atoms in a peptide group, atoms in a mainchain group or atoms of a sidechain that are expected to be planar.

Mol	Chain	#Chirality outliers	#Planarity outliers
1	C	0	1

There are no bond length outliers.

There are no bond angle outliers.

There are no chirality outliers.

All (1) planarity outliers are listed below:

Mol	Chain	Res	Type	Group
1	C	124	TYR	Sidechain

5.2 Too-close contacts [i](#)

In the following table, the Non-H and H(model) columns list the number of non-hydrogen atoms and hydrogen atoms in the chain respectively. The H(added) column lists the number of hydrogen atoms added and optimized by MolProbity. The Clashes column lists the number of clashes within the asymmetric unit, whereas Symm-Clashes lists symmetry related clashes.

Mol	Chain	Non-H	H(model)	H(added)	Clashes	Symm-Clashes
1	A	1367	0	1340	137	0
1	B	1367	0	1340	115	0
1	C	1379	0	1349	107	0
1	D	1350	0	1309	134	0
2	A	15	0	17	0	0
2	B	30	0	34	4	0
2	C	15	0	18	5	0
2	D	15	0	17	2	0
3	A	32	0	0	1	0
3	B	40	0	0	6	0
3	C	47	0	0	8	0
3	D	37	0	0	9	0
All	All	5694	0	5424	489	0

The all-atom clashscore is defined as the number of clashes found per 1000 atoms (including hydrogen atoms). The all-atom clashscore for this structure is 45.

All (489) close contacts within the same asymmetric unit are listed below, sorted by their clash magnitude.

Atom-1	Atom-2	Interatomic distance (Å)	Clash overlap (Å)
1:A:78:LYS:CD	1:A:79:GLY:H	1.57	1.17
1:A:64:VAL:CG1	1:A:65:ASN:H	1.47	1.15
1:D:191:THR:HG22	1:D:193:ASN:H	1.11	1.13
1:B:155:MET:HE3	1:B:160:HIS:H	1.13	1.09
1:A:52:LYS:HE3	1:A:54:ASP:HB3	1.33	1.09
1:C:63:LYS:HD3	1:C:63:LYS:H	1.11	1.09
1:A:73:ARG:HE	1:A:78:LYS:HE3	1.13	1.09
1:C:191:THR:HG22	1:C:193:ASN:H	1.07	1.09
1:D:160:HIS:CE1	3:D:2025:HOH:O	2.04	1.07
1:C:64:VAL:HG12	1:C:65:ASN:H	1.18	1.07
1:B:191:THR:HG22	1:B:193:ASN:H	1.19	1.06
1:A:64:VAL:HG13	1:A:65:ASN:H	1.21	1.05
1:A:73:ARG:HG2	1:A:78:LYS:HZ1	1.21	1.04
1:D:132:LYS:HD3	1:D:132:LYS:H	1.21	1.04
1:A:64:VAL:CG1	1:A:65:ASN:N	2.17	1.02
1:A:191:THR:HG22	1:A:193:ASN:H	1.23	1.01
1:B:76:ARG:HB3	1:B:78:LYS:HE3	1.40	1.00
1:A:58:LYS:H	1:A:58:LYS:HD3	1.26	0.99
1:A:64:VAL:HG12	1:A:65:ASN:N	1.75	0.98
1:D:63:LYS:HG2	1:D:95:GLN:HG2	1.45	0.98
1:A:78:LYS:HD3	1:A:79:GLY:H	1.27	0.98
1:D:52:LYS:HZ2	1:D:59:ILE:HG13	1.29	0.96

Continued on next page...

Continued from previous page...

Atom-1	Atom-2	Interatomic distance (Å)	Clash overlap (Å)
1:D:160:HIS:ND1	3:D:2025:HOH:O	1.92	0.96
1:A:64:VAL:HG13	1:A:69:GLN:OE1	1.66	0.94
1:B:129:ILE:HD11	1:B:136:TYR:HB2	1.51	0.93
2:C:1209:EPE:H72	3:C:2047:HOH:O	1.67	0.93
1:B:155:MET:HE3	1:B:160:HIS:N	1.85	0.91
1:A:78:LYS:HD2	1:A:79:GLY:H	1.36	0.91
1:D:155:MET:HE3	1:D:160:HIS:H	1.34	0.90
1:A:78:LYS:HD2	1:A:79:GLY:N	1.87	0.89
1:D:132:LYS:CD	1:D:132:LYS:H	1.86	0.89
1:D:165:SER:HA	1:D:168:ARG:HH11	1.36	0.88
1:C:191:THR:HG22	1:C:193:ASN:N	1.88	0.88
1:A:78:LYS:CD	1:A:79:GLY:N	2.36	0.88
1:A:66:THR:HG22	1:A:68:ASP:H	1.37	0.88
1:D:52:LYS:NZ	1:D:59:ILE:HG13	1.88	0.87
1:C:38:TYR:HA	3:C:2001:HOH:O	1.74	0.87
1:C:64:VAL:HG12	1:C:65:ASN:N	1.88	0.87
1:D:191:THR:HG22	1:D:193:ASN:N	1.89	0.86
1:A:73:ARG:HG2	1:A:78:LYS:NZ	1.88	0.86
1:C:129:ILE:HD11	1:C:203:ILE:HB	1.58	0.86
1:A:197:ARG:HG2	1:A:198:TYR:HD1	1.38	0.86
1:D:160:HIS:CG	3:D:2025:HOH:O	2.28	0.85
1:A:73:ARG:NE	1:A:78:LYS:HE3	1.92	0.84
1:D:73:ARG:HD2	3:D:2006:HOH:O	1.78	0.84
1:B:172:LEU:HD21	1:B:180:PRO:HG3	1.60	0.83
1:D:52:LYS:HE2	1:D:57:LEU:HB2	1.58	0.83
1:A:172:LEU:HD21	1:A:180:PRO:HG3	1.61	0.83
1:D:73:ARG:HG2	1:D:73:ARG:HH11	1.45	0.82
1:A:78:LYS:HZ3	1:A:80:LEU:HD11	1.43	0.82
1:B:191:THR:HG22	1:B:193:ASN:N	1.93	0.82
1:D:155:MET:HE2	1:D:159:GLU:HG3	1.59	0.82
1:D:158:HIS:NE2	1:D:197:ARG:HA	1.94	0.82
1:D:132:LYS:HD3	1:D:132:LYS:N	1.94	0.82
1:C:65:ASN:HB3	1:C:69:GLN:HE22	1.42	0.82
1:A:67:ALA:HB2	1:A:89:PHE:CD2	2.15	0.81
1:A:191:THR:HB	1:A:196:VAL:O	1.80	0.81
1:D:158:HIS:CD2	1:D:197:ARG:HA	2.15	0.81
1:A:132:LYS:H	1:A:134:ARG:NH1	1.79	0.81
1:D:167:TYR:O	1:D:170:LYS:HD3	1.79	0.80
1:C:156:ILE:HB	1:C:157:PRO:HD3	1.64	0.80
1:A:134:ARG:HG2	3:A:2015:HOH:O	1.81	0.79
1:B:169:GLY:N	2:B:1210:EPE:O2S	2.15	0.79

Continued on next page...

Continued from previous page...

Atom-1	Atom-2	Interatomic distance (Å)	Clash overlap (Å)
1:B:121:ASN:ND2	1:B:123:ASP:HB2	1.97	0.79
1:D:53:ILE:O	1:D:55:PRO:HD3	1.80	0.79
1:B:207:SER:O	1:B:208:GLU:HG3	1.82	0.79
1:C:64:VAL:CG1	1:C:65:ASN:H	1.96	0.79
1:A:164:PRO:O	1:A:167:TYR:O	2.02	0.78
1:C:63:LYS:CD	1:C:63:LYS:H	1.89	0.78
1:B:65:ASN:HB2	1:B:69:GLN:HE22	1.48	0.77
1:A:135:SER:O	1:A:137:LYS:HD3	1.85	0.77
1:B:143:THR:OG1	1:B:147:ILE:HG12	1.84	0.76
1:C:158:HIS:HB3	2:C:1209:EPE:O2S	1.86	0.76
1:D:160:HIS:HD2	1:D:162:PHE:H	1.34	0.75
1:C:61:THR:O	1:C:62:LYS:HG3	1.86	0.75
1:A:52:LYS:HE2	1:A:57:LEU:HD23	1.67	0.75
1:A:155:MET:CE	1:A:160:HIS:H	2.00	0.74
1:A:167:TYR:HB3	1:A:170:LYS:HG3	1.69	0.74
1:A:78:LYS:NZ	1:A:80:LEU:HD11	2.03	0.74
1:D:155:MET:HE3	1:D:160:HIS:N	2.01	0.74
1:A:158:HIS:CD2	1:A:197:ARG:HA	2.22	0.73
1:D:52:LYS:CE	1:D:57:LEU:HB2	2.17	0.73
1:A:147:ILE:HG21	1:A:191:THR:CG2	2.18	0.73
1:A:147:ILE:HG21	1:A:191:THR:HG23	1.70	0.73
1:D:172:LEU:HD21	1:D:180:PRO:HG3	1.71	0.73
1:D:191:THR:HB	1:D:196:VAL:O	1.88	0.73
1:D:65:ASN:HB2	1:D:69:GLN:HE22	1.55	0.72
1:B:190:PHE:HE1	1:B:197:ARG:NH1	1.88	0.71
1:C:190:PHE:HE1	2:C:1209:EPE:H61	1.54	0.71
1:B:160:HIS:HD2	1:B:162:PHE:H	1.38	0.71
1:A:63:LYS:HA	1:A:95:GLN:HA	1.71	0.71
1:C:158:HIS:CD2	1:C:197:ARG:HA	2.26	0.71
1:D:66:THR:H	1:D:69:GLN:HE21	1.38	0.71
1:A:62:LYS:HG2	1:A:63:LYS:N	2.04	0.70
1:A:132:LYS:H	1:A:134:ARG:HH11	1.38	0.70
1:D:73:ARG:HG2	1:D:73:ARG:NH1	2.05	0.69
1:B:54:ASP:HB3	1:B:57:LEU:HG	1.74	0.69
1:C:126:ARG:NH1	1:C:130:ILE:HG13	2.07	0.69
1:A:64:VAL:HG12	1:A:65:ASN:C	2.12	0.69
1:B:53:ILE:HD11	1:B:109:LYS:HG3	1.72	0.69
1:B:191:THR:HB	1:B:196:VAL:O	1.93	0.69
1:D:73:ARG:NH1	1:D:78:LYS:O	2.26	0.69
1:D:155:MET:HE3	1:D:159:GLU:HA	1.72	0.69
1:D:164:PRO:O	1:D:168:ARG:HD2	1.92	0.69

Continued on next page...

Continued from previous page...

Atom-1	Atom-2	Interatomic distance (Å)	Clash overlap (Å)
1:B:59:ILE:HG22	1:B:60:LYS:N	2.08	0.69
1:B:187:PRO:HB2	1:B:203:ILE:HD12	1.75	0.69
1:C:193:ASN:OD1	1:C:196:VAL:HG23	1.93	0.69
1:D:159:GLU:O	1:D:197:ARG:NH2	2.25	0.68
1:A:132:LYS:HG2	1:C:168:ARG:NH1	2.08	0.68
1:A:64:VAL:HG11	1:A:69:GLN:HB2	1.76	0.68
1:D:156:ILE:HG13	1:D:157:PRO:HA	1.74	0.68
1:A:191:THR:HG22	1:A:193:ASN:N	2.04	0.68
1:C:134:ARG:CZ	1:C:135:SER:HB3	2.24	0.68
1:D:160:HIS:CD2	1:D:162:PHE:H	2.12	0.68
1:A:58:LYS:CD	1:A:58:LYS:H	2.05	0.68
1:B:59:ILE:HG22	1:B:60:LYS:H	1.58	0.68
1:D:64:VAL:HG11	1:D:69:GLN:HB2	1.76	0.68
1:D:132:LYS:HG3	1:D:134:ARG:HE	1.58	0.67
1:B:181:ARG:HB2	1:B:183:GLU:HG3	1.77	0.67
1:C:63:LYS:N	1:C:63:LYS:HD3	1.97	0.67
1:A:129:ILE:HD11	1:A:203:ILE:HB	1.76	0.67
1:A:64:VAL:HG11	1:A:66:THR:O	1.94	0.66
1:C:160:HIS:HD2	1:C:162:PHE:H	1.43	0.66
1:A:65:ASN:CB	1:A:69:GLN:HE22	2.09	0.66
1:A:155:MET:HE1	1:A:160:HIS:H	1.60	0.66
1:C:65:ASN:HB3	1:C:69:GLN:NE2	2.10	0.66
1:A:141:SER:HB2	1:A:175:ASN:ND2	2.10	0.66
1:B:172:LEU:HD21	1:B:180:PRO:CG	2.25	0.66
1:C:143:THR:OG1	1:C:147:ILE:HG13	1.95	0.65
1:D:197:ARG:HG2	1:D:198:TYR:HD1	1.62	0.65
1:B:132:LYS:HD3	1:B:182:GLY:O	1.95	0.65
1:A:77:ASN:CB	1:B:142:ILE:HD13	2.26	0.65
1:D:155:MET:CE	1:D:160:HIS:H	2.09	0.65
1:D:65:ASN:HB2	1:D:69:GLN:NE2	2.11	0.65
1:C:54:ASP:OD1	1:C:56:ALA:HB3	1.97	0.64
1:B:155:MET:HE2	1:B:159:GLU:HG3	1.78	0.64
1:B:160:HIS:HD2	1:B:162:PHE:N	1.96	0.64
1:A:73:ARG:HE	1:A:78:LYS:CE	2.01	0.64
1:A:160:HIS:HD2	1:A:162:PHE:HB2	1.63	0.63
1:D:132:LYS:HG2	1:D:134:ARG:HG3	1.79	0.63
1:C:160:HIS:CD2	1:C:162:PHE:HB2	2.33	0.63
1:D:66:THR:H	1:D:69:GLN:NE2	1.95	0.63
1:A:155:MET:HE2	1:A:159:GLU:HA	1.80	0.63
1:C:106:SER:HB3	3:C:2011:HOH:O	1.99	0.63
1:C:172:LEU:HD21	1:C:180:PRO:HG3	1.80	0.63

Continued on next page...

Continued from previous page...

Atom-1	Atom-2	Interatomic distance (Å)	Clash overlap (Å)
1:A:147:ILE:CG2	1:A:191:THR:HG23	2.29	0.63
1:A:52:LYS:HG3	1:A:107:GLY:O	1.98	0.63
1:B:155:MET:CE	1:B:159:GLU:HG3	2.28	0.63
1:C:160:HIS:HD2	1:C:162:PHE:HB2	1.62	0.63
1:C:160:HIS:CD2	1:C:162:PHE:H	2.17	0.63
1:B:197:ARG:NH1	2:B:1209:EPE:O1S	2.32	0.62
1:D:77:ASN:HD21	1:D:84:CYS:H	1.45	0.62
1:A:73:ARG:HG3	1:A:78:LYS:CG	2.29	0.62
1:C:140:VAL:HB	1:C:203:ILE:HD11	1.80	0.62
1:B:129:ILE:HD13	1:B:203:ILE:HG21	1.82	0.62
1:D:52:LYS:HE2	1:D:57:LEU:CB	2.28	0.62
1:D:165:SER:CA	1:D:168:ARG:HH11	2.09	0.62
1:D:66:THR:N	1:D:69:GLN:HE21	1.97	0.62
1:C:157:PRO:HB2	1:C:158:HIS:HD1	1.64	0.61
1:A:141:SER:HB2	1:A:175:ASN:HD21	1.64	0.61
1:B:76:ARG:HB3	1:B:78:LYS:CE	2.24	0.61
1:D:197:ARG:HG2	1:D:198:TYR:CD1	2.36	0.61
1:B:39:VAL:CG2	1:B:68:ASP:HA	2.30	0.61
1:D:53:ILE:C	1:D:55:PRO:HD3	2.21	0.61
1:A:172:LEU:HD21	1:A:180:PRO:CG	2.30	0.61
1:B:54:ASP:OD2	1:B:56:ALA:HB3	2.01	0.61
1:B:76:ARG:CB	1:B:78:LYS:HG3	2.31	0.60
1:A:158:HIS:NE2	1:A:197:ARG:HA	2.15	0.60
1:A:77:ASN:HD21	1:A:83:THR:HA	1.66	0.60
1:A:80:LEU:C	1:A:82:PHE:H	2.05	0.60
1:C:65:ASN:CB	1:C:69:GLN:HE22	2.14	0.60
1:D:52:LYS:HE3	1:D:101:PHE:HE2	1.66	0.60
1:B:190:PHE:CE1	1:B:197:ARG:NH1	2.69	0.59
1:A:197:ARG:HG2	1:A:198:TYR:CD1	2.27	0.59
1:B:61:THR:HB	1:B:95:GLN:OE1	2.02	0.59
1:C:52:LYS:CE	1:C:55:PRO:HA	2.33	0.59
1:D:191:THR:CG2	1:D:193:ASN:HB3	2.31	0.59
1:A:129:ILE:HG23	1:A:133:GLY:HA2	1.83	0.59
1:C:79:GLY:O	1:C:80:LEU:HD23	2.02	0.59
1:D:187:PRO:HB2	1:D:203:ILE:HD12	1.85	0.59
1:A:135:SER:O	1:A:137:LYS:CD	2.50	0.59
1:A:62:LYS:HG2	1:A:63:LYS:H	1.67	0.59
1:D:117:ASP:HB3	1:D:119:TYR:CE1	2.38	0.59
1:A:160:HIS:CD2	1:A:162:PHE:HB2	2.38	0.59
1:C:190:PHE:CE1	2:C:1209:EPE:H61	2.37	0.59
1:A:52:LYS:CD	1:A:57:LEU:HB2	2.32	0.58

Continued on next page...

Continued from previous page...

Atom-1	Atom-2	Interatomic distance (Å)	Clash overlap (Å)
1:A:66:THR:O	1:A:69:GLN:HB2	2.03	0.58
1:C:138:GLY:O	1:C:178:ARG:NH2	2.34	0.58
1:B:134:ARG:HE	1:B:170:LYS:HE3	1.67	0.58
1:D:66:THR:OG1	1:D:69:GLN:HG3	2.04	0.58
1:D:52:LYS:HE3	1:D:59:ILE:HD11	1.86	0.58
1:A:104:MET:SD	1:A:137:LYS:HE2	2.44	0.58
1:D:54:ASP:O	1:D:56:ALA:N	2.31	0.58
1:C:171:ASP:O	1:C:178:ARG:HD2	2.04	0.58
1:D:80:LEU:O	1:D:82:PHE:N	2.36	0.58
1:B:88:VAL:HB	1:B:97:LEU:HD12	1.86	0.58
1:B:42:PHE:CE2	1:B:121:ASN:HB2	2.38	0.58
1:A:51:ILE:HD11	1:A:111:GLU:CD	2.25	0.57
1:B:55:PRO:HA	3:B:2004:HOH:O	2.04	0.57
1:C:157:PRO:HB2	1:C:158:HIS:ND1	2.19	0.57
1:C:76:ARG:HH11	1:C:78:LYS:NZ	2.02	0.57
1:A:57:LEU:HD12	1:A:101:PHE:HD2	1.69	0.57
1:C:77:ASN:HD21	1:C:83:THR:HA	1.68	0.57
1:A:58:LYS:N	1:A:58:LYS:HD3	2.08	0.57
1:B:171:ASP:OD2	1:B:178:ARG:NH1	2.38	0.56
1:A:52:LYS:HG2	1:A:54:ASP:H	1.70	0.56
1:B:132:LYS:HB2	3:B:2020:HOH:O	2.04	0.56
1:D:181:ARG:HB2	1:D:183:GLU:HG3	1.88	0.56
1:A:65:ASN:HB3	1:A:69:GLN:HE22	1.70	0.56
1:B:190:PHE:HE1	1:B:197:ARG:HH12	1.52	0.56
1:C:161:SER:HB3	3:C:2033:HOH:O	2.04	0.56
1:A:73:ARG:HG3	1:A:78:LYS:HG2	1.87	0.56
1:A:96:CYS:O	1:A:97:LEU:HD23	2.05	0.56
1:A:157:PRO:HG2	1:A:158:HIS:CE1	2.41	0.56
1:D:170:LYS:CD	1:D:170:LYS:N	2.70	0.56
1:D:170:LYS:HD2	1:D:170:LYS:N	2.21	0.56
1:A:136:TYR:CE1	1:A:138:GLY:HA3	2.41	0.55
1:B:155:MET:HE3	1:B:159:GLU:HA	1.88	0.55
1:A:64:VAL:HG13	1:A:69:GLN:CD	2.25	0.55
1:B:46:ALA:HA	1:B:117:ASP:OD1	2.05	0.55
1:C:132:LYS:O	1:C:186:GLY:HA2	2.06	0.55
1:D:52:LYS:NZ	1:D:57:LEU:O	2.38	0.55
1:B:95:GLN:NE2	1:B:97:LEU:HD21	2.21	0.55
1:D:131:GLY:N	1:D:205:GLN:OE1	2.39	0.55
1:C:129:ILE:CD1	1:C:203:ILE:HB	2.34	0.55
1:C:134:ARG:HB2	3:C:2042:HOH:O	2.05	0.55
1:D:63:LYS:HE2	1:D:95:GLN:NE2	2.22	0.55

Continued on next page...

Continued from previous page...

Atom-1	Atom-2	Interatomic distance (Å)	Clash overlap (Å)
1:A:181:ARG:O	1:A:182:GLY:C	2.44	0.55
1:B:93:ARG:HH11	1:B:93:ARG:HG3	1.72	0.55
1:D:171:ASP:O	1:D:178:ARG:HD2	2.07	0.55
1:D:155:MET:CE	1:D:159:GLU:HA	2.38	0.54
1:A:96:CYS:C	1:A:97:LEU:HD23	2.27	0.54
1:D:77:ASN:ND2	1:D:84:CYS:H	2.05	0.54
1:B:185:GLY:O	1:B:200:VAL:HG11	2.08	0.54
1:D:41:GLU:HG3	1:D:41:GLU:O	2.07	0.54
1:A:65:ASN:HB3	1:A:69:GLN:NE2	2.23	0.54
1:A:87:PHE:CD1	1:A:87:PHE:C	2.81	0.54
1:A:93:ARG:O	1:A:95:GLN:N	2.41	0.54
1:C:191:THR:HB	1:C:196:VAL:O	2.08	0.54
1:C:131:GLY:H	1:C:205:GLN:NE2	2.05	0.54
1:A:88:VAL:HG23	1:A:99:PHE:HE2	1.73	0.54
1:D:63:LYS:HG2	1:D:95:GLN:CG	2.30	0.54
1:C:76:ARG:NH1	1:C:78:LYS:NZ	2.57	0.53
1:C:79:GLY:C	1:C:80:LEU:HD23	2.29	0.53
1:D:191:THR:HG21	1:D:193:ASN:HB3	1.88	0.53
1:D:61:THR:HG22	1:D:97:LEU:HD23	1.90	0.53
1:D:200:VAL:HG12	1:D:201:CYS:N	2.22	0.53
1:A:52:LYS:HE2	1:A:57:LEU:CD2	2.38	0.53
1:B:51:ILE:HD11	1:B:111:GLU:OE1	2.08	0.53
1:C:95:GLN:HB2	3:C:2010:HOH:O	2.08	0.53
1:B:72:ASN:OD1	1:B:76:ARG:HD2	2.09	0.53
1:A:207:SER:O	1:A:208:GLU:HG2	2.09	0.53
1:B:155:MET:CE	1:B:160:HIS:H	2.04	0.52
1:C:134:ARG:HD2	1:C:135:SER:N	2.25	0.52
1:C:143:THR:HB	1:C:199:GLU:OE1	2.08	0.52
1:C:143:THR:HG1	1:C:147:ILE:HG13	1.75	0.52
1:D:155:MET:CE	1:D:159:GLU:HG3	2.34	0.52
1:C:99:PHE:HB3	1:C:101:PHE:CZ	2.44	0.52
1:A:64:VAL:HG12	1:A:65:ASN:H	1.35	0.52
1:D:160:HIS:CD2	3:D:2025:HOH:O	2.56	0.52
1:A:157:PRO:HG2	1:A:158:HIS:ND1	2.25	0.52
1:A:82:PHE:CD1	1:A:100:PRO:HB3	2.45	0.52
1:C:179:ASN:ND2	1:C:182:GLY:HA2	2.24	0.52
1:B:121:ASN:HD21	1:B:123:ASP:HB2	1.72	0.52
1:B:138:GLY:O	1:B:178:ARG:NH2	2.41	0.52
1:B:198:TYR:CD1	2:B:1209:EPE:H102	2.45	0.52
1:B:47:LYS:HZ3	1:B:114:HIS:CE1	2.27	0.52
1:A:142:ILE:HD12	1:B:77:ASN:CG	2.30	0.51

Continued on next page...

Continued from previous page...

Atom-1	Atom-2	Interatomic distance (Å)	Clash overlap (Å)
1:A:167:TYR:HB3	1:A:170:LYS:CG	2.40	0.51
1:A:73:ARG:HG2	1:A:78:LYS:CE	2.40	0.51
1:B:134:ARG:HD3	3:B:2021:HOH:O	2.08	0.51
1:B:170:LYS:HE2	1:B:180:PRO:O	2.10	0.51
1:C:38:TYR:CD1	1:C:38:TYR:N	2.78	0.51
1:C:39:VAL:HG13	1:C:119:TYR:CE1	2.46	0.51
1:D:198:TYR:CE1	2:D:1209:EPE:H102	2.46	0.51
1:A:101:PHE:CD1	1:A:101:PHE:C	2.84	0.51
1:B:134:ARG:HE	1:B:170:LYS:CE	2.23	0.51
1:A:129:ILE:HD12	1:A:203:ILE:O	2.09	0.51
1:C:96:CYS:O	1:C:97:LEU:HD23	2.11	0.51
1:A:206:CYS:C	1:A:208:GLU:H	2.13	0.51
1:B:76:ARG:HB3	1:B:78:LYS:HG3	1.93	0.51
1:D:39:VAL:HG22	1:D:68:ASP:HA	1.93	0.51
1:D:147:ILE:HG21	1:D:191:THR:HG23	1.93	0.51
1:A:136:TYR:CZ	1:A:138:GLY:HA3	2.46	0.50
1:C:62:LYS:O	1:C:64:VAL:HG23	2.11	0.50
1:D:206:CYS:O	1:D:207:SER:CB	2.59	0.50
1:A:155:MET:HE2	1:A:160:HIS:H	1.75	0.50
1:B:76:ARG:CB	1:B:78:LYS:HE3	2.29	0.50
1:C:56:ALA:O	1:C:58:LYS:HG3	2.12	0.50
1:D:52:LYS:CE	1:D:101:PHE:HE2	2.25	0.50
1:C:150:GLN:CD	1:C:157:PRO:HD2	2.32	0.50
1:D:52:LYS:NZ	1:D:57:LEU:C	2.65	0.50
1:D:94:LYS:HA	1:D:94:LYS:HE3	1.93	0.50
1:A:92:ALA:HB2	1:A:115:GLU:HB2	1.93	0.50
1:A:73:ARG:HG3	1:A:78:LYS:HG3	1.93	0.50
1:B:47:LYS:NZ	1:B:114:HIS:CE1	2.80	0.50
1:C:147:ILE:HB	1:C:191:THR:HG23	1.94	0.50
1:C:129:ILE:HD12	1:C:203:ILE:O	2.12	0.50
1:B:155:MET:CE	1:B:159:GLU:HA	2.42	0.49
1:D:155:MET:HE3	1:D:159:GLU:CA	2.40	0.49
1:B:135:SER:O	1:B:137:LYS:HG2	2.11	0.49
1:C:129:ILE:HG13	1:C:203:ILE:HG22	1.94	0.49
1:B:160:HIS:CD2	1:B:162:PHE:HB2	2.47	0.49
1:A:66:THR:HG22	1:A:67:ALA:N	2.27	0.49
1:D:138:GLY:O	1:D:178:ARG:NH2	2.40	0.49
1:D:61:THR:CG2	1:D:97:LEU:HD23	2.43	0.49
1:A:51:ILE:HD11	1:A:111:GLU:OE1	2.12	0.49
1:B:60:LYS:HD2	1:B:80:LEU:CD2	2.42	0.49
1:B:80:LEU:C	1:B:82:PHE:H	2.16	0.49

Continued on next page...

Continued from previous page...

Atom-1	Atom-2	Interatomic distance (Å)	Clash overlap (Å)
1:B:76:ARG:HB2	1:B:78:LYS:HG3	1.94	0.49
1:A:54:ASP:OD2	1:A:56:ALA:HB3	2.13	0.48
1:D:165:SER:HA	1:D:168:ARG:HD3	1.95	0.48
1:D:187:PRO:CB	1:D:203:ILE:HD12	2.43	0.48
1:D:83:THR:O	1:D:100:PRO:HA	2.14	0.48
1:A:77:ASN:ND2	1:A:84:CYS:H	2.10	0.48
1:C:132:LYS:HD3	1:C:182:GLY:O	2.14	0.48
1:C:129:ILE:HG23	1:C:133:GLY:CA	2.44	0.48
1:B:93:ARG:NH1	1:B:93:ARG:HG3	2.28	0.48
1:C:136:TYR:CZ	1:C:138:GLY:HA3	2.49	0.48
1:C:90:ASP:OD1	1:C:92:ALA:HB3	2.14	0.48
1:D:132:LYS:CG	1:D:134:ARG:HG3	2.43	0.48
1:A:77:ASN:HD21	1:A:84:CYS:H	1.62	0.48
1:D:126:ARG:NH1	1:D:128:CYS:O	2.46	0.48
1:D:82:PHE:CD1	1:D:100:PRO:HB3	2.49	0.48
1:B:160:HIS:CD2	1:B:162:PHE:H	2.24	0.48
1:D:136:TYR:CE1	1:D:138:GLY:HA3	2.49	0.48
1:D:170:LYS:HE2	3:D:2029:HOH:O	2.13	0.48
1:A:159:GLU:O	1:A:197:ARG:NH2	2.26	0.48
1:A:63:LYS:O	1:A:64:VAL:HG23	2.14	0.47
1:D:164:PRO:HD2	3:D:2027:HOH:O	2.13	0.47
1:A:132:LYS:HG3	1:A:134:ARG:NH1	2.29	0.47
1:A:129:ILE:HG23	1:A:133:GLY:CA	2.44	0.47
1:A:52:LYS:HE2	1:A:57:LEU:HB2	1.95	0.47
1:C:156:ILE:CB	1:C:157:PRO:HD3	2.39	0.47
1:A:67:ALA:HB2	1:A:89:PHE:CE2	2.48	0.47
1:A:87:PHE:HA	1:A:97:LEU:O	2.15	0.47
1:C:83:THR:HG23	1:D:142:ILE:HD12	1.97	0.47
1:B:73:ARG:HD3	1:B:98:TRP:CZ2	2.50	0.47
1:C:203:ILE:HA	1:C:204:PRO:HD3	1.79	0.47
1:D:147:ILE:CG2	1:D:191:THR:HG23	2.44	0.47
1:B:158:HIS:NE2	1:B:197:ARG:HA	2.30	0.47
1:C:51:ILE:HD12	1:C:111:GLU:OE2	2.14	0.47
1:C:207:SER:O	1:C:208:GLU:C	2.52	0.47
1:D:90:ASP:O	1:D:94:LYS:N	2.42	0.47
1:A:65:ASN:HB2	1:A:69:GLN:HE22	1.78	0.47
1:B:101:PHE:HB2	1:B:105:SER:HB2	1.97	0.47
1:B:150:GLN:OE1	1:B:157:PRO:HD2	2.14	0.47
1:A:62:LYS:CG	1:A:63:LYS:H	2.26	0.46
1:B:191:THR:HG21	1:B:193:ASN:HB3	1.96	0.46
1:D:147:ILE:HG21	1:D:191:THR:CG2	2.45	0.46

Continued on next page...

Continued from previous page...

Atom-1	Atom-2	Interatomic distance (Å)	Clash overlap (Å)
1:D:167:TYR:O	1:D:168:ARG:C	2.53	0.46
1:A:71:ALA:HA	1:A:87:PHE:CE2	2.50	0.46
1:B:179:ASN:N	1:B:180:PRO:HD3	2.30	0.46
1:B:64:VAL:HG11	1:B:96:CYS:SG	2.55	0.46
1:C:76:ARG:HH11	1:C:78:LYS:CE	2.28	0.46
1:D:46:ALA:HA	1:D:117:ASP:OD1	2.15	0.46
1:D:207:SER:O	1:D:208:GLU:HB3	2.15	0.46
1:B:70:CYS:HB2	1:B:87:PHE:CE1	2.51	0.46
1:D:135:SER:HB2	3:D:2015:HOH:O	2.15	0.46
1:D:87:PHE:HA	1:D:97:LEU:O	2.15	0.46
1:A:83:THR:O	1:A:100:PRO:HA	2.16	0.46
1:A:144:LYS:HE2	1:A:200:VAL:CG1	2.46	0.46
1:B:185:GLY:HA3	2:B:1209:EPE:O8	2.16	0.46
1:D:155:MET:CE	1:D:159:GLU:CG	2.93	0.46
1:A:171:ASP:O	1:A:178:ARG:HD2	2.16	0.46
1:D:165:SER:HA	1:D:168:ARG:CD	2.46	0.46
1:B:156:ILE:HG23	1:B:157:PRO:HA	1.97	0.46
1:B:81:PRO:O	1:B:82:PHE:HB3	2.15	0.46
1:D:197:ARG:NH1	2:D:1209:EPE:O1S	2.49	0.46
1:B:93:ARG:HH12	1:B:115:GLU:HG3	1.81	0.46
1:C:181:ARG:HH11	1:C:181:ARG:HB3	1.81	0.46
1:B:88:VAL:HG23	1:B:99:PHE:HE2	1.80	0.46
1:C:115:GLU:OE1	1:C:115:GLU:N	2.47	0.46
1:C:147:ILE:HD13	1:C:191:THR:HG21	1.98	0.46
1:A:142:ILE:CG2	1:A:146:GLY:HA2	2.46	0.45
1:A:193:ASN:OD1	1:A:195:GLU:HB3	2.15	0.45
1:B:130:ILE:HB	3:B:2022:HOH:O	2.16	0.45
1:A:90:ASP:OD1	1:A:92:ALA:HB3	2.17	0.45
1:D:158:HIS:CE1	1:D:197:ARG:HA	2.49	0.45
1:A:77:ASN:HB3	1:B:142:ILE:HD13	1.97	0.45
1:C:206:CYS:O	1:C:208:GLU:N	2.50	0.45
1:C:138:GLY:N	1:C:178:ARG:NH2	2.64	0.45
1:D:141:SER:HB2	1:D:175:ASN:ND2	2.31	0.45
1:D:164:PRO:O	1:D:168:ARG:N	2.50	0.45
1:D:80:LEU:C	1:D:82:PHE:H	2.20	0.45
1:C:135:SER:O	1:C:137:LYS:HG2	2.17	0.45
1:B:126:ARG:NH1	1:B:130:ILE:CD1	2.80	0.45
1:D:101:PHE:CD1	1:D:108:VAL:HG11	2.52	0.45
1:D:155:MET:CE	1:D:160:HIS:N	2.73	0.44
1:B:181:ARG:NH1	3:B:2036:HOH:O	2.38	0.44
1:C:63:LYS:CD	1:C:63:LYS:N	2.68	0.44

Continued on next page...

Continued from previous page...

Atom-1	Atom-2	Interatomic distance (Å)	Clash overlap (Å)
1:A:41:GLU:HG3	1:A:41:GLU:O	2.17	0.44
1:B:39:VAL:O	1:B:39:VAL:HG12	2.16	0.44
1:D:202:ASP:O	1:D:204:PRO:HD3	2.17	0.44
1:B:80:LEU:HA	1:B:81:PRO:HD3	1.90	0.44
1:C:150:GLN:OE1	1:C:157:PRO:HB2	2.17	0.44
1:C:38:TYR:HB3	1:C:41:GLU:OE2	2.17	0.44
1:B:73:ARG:HG2	1:B:73:ARG:HH11	1.83	0.44
1:A:155:MET:CE	1:A:160:HIS:ND1	2.81	0.44
1:B:136:TYR:CZ	1:B:138:GLY:HA3	2.52	0.44
1:B:171:ASP:O	1:B:178:ARG:HD2	2.17	0.44
1:C:70:CYS:HB2	1:C:87:PHE:CE1	2.52	0.44
1:D:185:GLY:O	1:D:200:VAL:HG11	2.18	0.44
1:B:103:SER:HB2	1:B:110:LYS:CE	2.48	0.43
1:D:206:CYS:O	1:D:207:SER:OG	2.33	0.43
1:C:131:GLY:N	1:C:205:GLN:HE22	2.17	0.43
1:C:77:ASN:ND2	1:C:84:CYS:H	2.16	0.43
1:A:151:PRO:HA	1:A:174:GLU:O	2.19	0.43
1:C:76:ARG:HH11	1:C:78:LYS:HE3	1.82	0.43
1:D:144:LYS:NZ	3:D:2021:HOH:O	2.52	0.43
1:D:52:LYS:HE3	1:D:59:ILE:CD1	2.48	0.43
1:B:181:ARG:HG3	1:B:181:ARG:NH1	2.33	0.43
1:C:129:ILE:HG23	1:C:133:GLY:HA2	2.00	0.43
1:C:136:TYR:CZ	1:C:203:ILE:HD13	2.54	0.43
1:A:65:ASN:HB3	1:A:66:THR:H	1.60	0.43
1:C:52:LYS:HE2	1:C:55:PRO:HA	1.99	0.43
1:A:65:ASN:CB	1:A:69:GLN:NE2	2.77	0.43
1:B:60:LYS:HD2	1:B:80:LEU:HD23	2.00	0.43
1:B:134:ARG:NE	1:B:170:LYS:HE3	2.34	0.43
1:C:126:ARG:HG2	1:C:128:CYS:O	2.18	0.43
1:D:126:ARG:HH11	1:D:126:ARG:HG2	1.84	0.43
1:B:63:LYS:NZ	1:B:93:ARG:O	2.37	0.43
1:C:126:ARG:CZ	1:C:130:ILE:CD1	2.97	0.43
1:C:122:LYS:HD2	1:C:139:THR:OG1	2.19	0.43
1:B:99:PHE:HB3	1:B:101:PHE:CE1	2.54	0.42
1:B:136:TYR:O	1:B:137:LYS:HD3	2.19	0.42
1:D:191:THR:HG22	1:D:193:ASN:HB3	2.01	0.42
1:B:129:ILE:CD1	1:B:136:TYR:HB2	2.37	0.42
3:C:2021:HOH:O	1:D:142:ILE:HD11	2.19	0.42
1:A:52:LYS:HE2	1:A:57:LEU:CG	2.49	0.42
1:B:129:ILE:HA	1:B:129:ILE:HD12	1.86	0.42
1:B:59:ILE:CG2	1:B:60:LYS:N	2.77	0.42

Continued on next page...

Continued from previous page...

Atom-1	Atom-2	Interatomic distance (Å)	Clash overlap (Å)
1:D:73:ARG:HH12	1:D:80:LEU:HG	1.84	0.42
1:D:54:ASP:OD1	1:D:107:GLY:HA3	2.19	0.42
1:A:75:THR:HG22	1:A:76:ARG:N	2.34	0.42
1:B:101:PHE:HB2	1:B:105:SER:CB	2.49	0.42
1:C:102:ASN:OD1	1:C:102:ASN:C	2.58	0.42
1:C:131:GLY:H	1:C:205:GLN:HE22	1.67	0.42
1:C:147:ILE:CD1	1:C:191:THR:HG21	2.50	0.42
1:D:44:LYS:HE3	1:D:117:ASP:CG	2.39	0.42
1:C:126:ARG:CZ	1:C:130:ILE:HD12	2.50	0.42
1:D:89:PHE:HZ	1:D:94:LYS:HE2	1.85	0.42
1:C:207:SER:OG	1:C:207:SER:O	2.36	0.42
1:C:80:LEU:HD12	1:C:84:CYS:HB2	2.02	0.42
1:B:113:GLY:HA3	1:B:116:PHE:HD2	1.84	0.42
1:C:187:PRO:O	1:C:200:VAL:HG13	2.19	0.42
1:A:90:ASP:OD2	1:A:116:PHE:HE1	2.03	0.42
1:B:183:GLU:O	1:B:185:GLY:N	2.53	0.42
1:C:64:VAL:O	1:C:94:LYS:HB3	2.20	0.42
1:D:63:LYS:HE2	1:D:95:GLN:HE21	1.84	0.42
1:A:172:LEU:HD23	1:A:178:ARG:HG3	2.02	0.42
1:A:91:LYS:HG3	1:A:91:LYS:O	2.20	0.41
1:C:95:GLN:NE2	3:C:2010:HOH:O	2.53	0.41
1:B:186:GLY:O	1:B:187:PRO:C	2.59	0.41
1:C:138:GLY:N	1:C:178:ARG:HH22	2.18	0.41
1:D:52:LYS:HZ2	1:D:59:ILE:CG1	2.16	0.41
1:B:58:LYS:C	1:B:59:ILE:HG13	2.40	0.41
1:B:191:THR:CG2	1:B:193:ASN:H	2.10	0.41
1:D:57:LEU:HD13	1:D:101:PHE:CD2	2.55	0.41
1:D:136:TYR:CZ	1:D:138:GLY:HA3	2.54	0.41
1:D:156:ILE:HA	1:D:157:PRO:C	2.41	0.41
1:D:64:VAL:CG1	1:D:69:GLN:HB2	2.48	0.41
1:A:102:ASN:HB2	1:A:120:GLU:OE2	2.19	0.41
1:B:41:GLU:HA	1:B:122:LYS:HE3	2.03	0.41
1:D:193:ASN:HA	1:D:194:PRO:HD3	1.90	0.41
1:D:203:ILE:HA	1:D:204:PRO:HD3	1.90	0.41
1:A:134:ARG:HD3	1:A:134:ARG:H	1.84	0.41
1:A:64:VAL:HG12	1:A:66:THR:N	2.36	0.41
1:B:129:ILE:HG13	1:B:133:GLY:HA2	2.03	0.41
1:C:38:TYR:HD1	1:C:38:TYR:N	2.19	0.41
1:A:52:LYS:CE	1:A:57:LEU:HB2	2.51	0.41
1:B:57:LEU:HD11	1:B:107:GLY:HA3	2.03	0.41
1:C:193:ASN:HA	1:C:194:PRO:HD3	1.93	0.41

Continued on next page...

Continued from previous page...

Atom-1	Atom-2	Interatomic distance (Å)	Clash overlap (Å)
1:D:52:LYS:HE3	1:D:101:PHE:CE2	2.51	0.41
1:B:80:LEU:O	1:B:82:PHE:N	2.53	0.41
1:A:199:GLU:HG2	1:A:200:VAL:O	2.21	0.41
1:D:143:THR:HG23	1:D:147:ILE:O	2.20	0.41
1:D:96:CYS:HB2	1:D:98:TRP:CH2	2.57	0.41
1:A:193:ASN:HA	1:A:194:PRO:HD3	1.94	0.40
1:A:78:LYS:HD3	1:A:79:GLY:N	2.12	0.40
1:B:155:MET:HE3	1:B:159:GLU:CA	2.50	0.40
1:C:160:HIS:HD2	1:C:162:PHE:N	2.16	0.40
1:B:191:THR:CG2	1:B:193:ASN:HB3	2.51	0.40
1:B:168:ARG:HG2	3:B:2028:HOH:O	2.21	0.40
1:C:183:GLU:OE2	2:C:1209:EPE:O8	2.35	0.40
1:B:51:ILE:HD11	1:B:111:GLU:CD	2.41	0.40
1:D:101:PHE:C	1:D:101:PHE:CD1	2.95	0.40
1:C:109:LYS:HD2	1:C:110:LYS:O	2.22	0.40
1:D:87:PHE:C	1:D:87:PHE:CD1	2.95	0.40

There are no symmetry-related clashes.

5.3 Torsion angles [i](#)

5.3.1 Protein backbone [i](#)

In the following table, the Percentiles column shows the percent Ramachandran outliers of the chain as a percentile score with respect to all X-ray entries followed by that with respect to entries of similar resolution.

The Analysed column shows the number of residues for which the backbone conformation was analysed, and the total number of residues.

Mol	Chain	Analysed	Favoured	Allowed	Outliers	Percentiles	
1	A	168/177 (95%)	144 (86%)	18 (11%)	6 (4%)	3	4
1	B	168/177 (95%)	146 (87%)	20 (12%)	2 (1%)	13	24
1	C	169/177 (96%)	154 (91%)	13 (8%)	2 (1%)	13	24
1	D	168/177 (95%)	146 (87%)	18 (11%)	4 (2%)	6	9
All	All	673/708 (95%)	590 (88%)	69 (10%)	14 (2%)	7	11

All (14) Ramachandran outliers are listed below:

Mol	Chain	Res	Type
1	A	78	LYS
1	A	94	LYS
1	B	184	GLU
1	C	78	LYS
1	A	64	VAL
1	D	55	PRO
1	D	207	SER
1	B	144	LYS
1	C	156	ILE
1	D	81	PRO
1	D	182	GLY
1	A	81	PRO
1	A	100	PRO
1	A	182	GLY

5.3.2 Protein sidechains ⓘ

In the following table, the Percentiles column shows the percent sidechain outliers of the chain as a percentile score with respect to all X-ray entries followed by that with respect to entries of similar resolution.

The Analysed column shows the number of residues for which the sidechain conformation was analysed, and the total number of residues.

Mol	Chain	Analysed	Rotameric	Outliers	Percentiles	
1	A	153/158 (97%)	147 (96%)	6 (4%)	32	57
1	B	153/158 (97%)	146 (95%)	7 (5%)	27	50
1	C	154/158 (98%)	147 (96%)	7 (4%)	27	51
1	D	149/158 (94%)	141 (95%)	8 (5%)	22	42
All	All	609/632 (96%)	581 (95%)	28 (5%)	27	50

All (28) residues with a non-rotameric sidechain are listed below:

Mol	Chain	Res	Type
1	A	58	LYS
1	A	63	LYS
1	A	78	LYS
1	A	134	ARG
1	A	137	LYS
1	A	166	SER
1	B	54	ASP
1	B	77	ASN

Continued on next page...

Continued from previous page...

Mol	Chain	Res	Type
1	B	95	GLN
1	B	97	LEU
1	B	129	ILE
1	B	147	ILE
1	B	200	VAL
1	C	38	TYR
1	C	40	HIS
1	C	63	LYS
1	C	68	ASP
1	C	147	ILE
1	C	166	SER
1	C	208	GLU
1	D	61	THR
1	D	73	ARG
1	D	94	LYS
1	D	114	HIS
1	D	132	LYS
1	D	142	ILE
1	D	206	CYS
1	D	208	GLU

Some sidechains can be flipped to improve hydrogen bonding and reduce clashes. All (16) such sidechains are listed below:

Mol	Chain	Res	Type
1	A	77	ASN
1	A	160	HIS
1	B	69	GLN
1	B	121	ASN
1	B	160	HIS
1	B	173	GLN
1	B	205	GLN
1	C	69	GLN
1	C	77	ASN
1	C	160	HIS
1	C	205	GLN
1	D	69	GLN
1	D	77	ASN
1	D	95	GLN
1	D	160	HIS
1	D	179	ASN

5.3.3 RNA ⓘ

There are no RNA molecules in this entry.

5.4 Non-standard residues in protein, DNA, RNA chains ⓘ

There are no non-standard protein/DNA/RNA residues in this entry.

5.5 Carbohydrates ⓘ

There are no carbohydrates in this entry.

5.6 Ligand geometry ⓘ

5 ligands are modelled in this entry.

In the following table, the Counts columns list the number of bonds (or angles) for which Mogul statistics could be retrieved, the number of bonds (or angles) that are observed in the model and the number of bonds (or angles) that are defined in the Chemical Component Dictionary. The Link column lists molecule types, if any, to which the group is linked. The Z score for a bond length (or angle) is the number of standard deviations the observed value is removed from the expected value. A bond length (or angle) with $|Z| > 2$ is considered an outlier worth inspection. RMSZ is the root-mean-square of all Z scores of the bond lengths (or angles).

Mol	Type	Chain	Res	Link	Bond lengths			Bond angles		
					Counts	RMSZ	# $ Z > 2$	Counts	RMSZ	# $ Z > 2$
2	EPE	A	1209	-	15,15,15	1.18	1 (6%)	18,20,20	1.06	2 (11%)
2	EPE	D	1209	-	15,15,15	1.36	3 (20%)	18,20,20	0.95	1 (5%)
2	EPE	B	1210	-	15,15,15	1.02	1 (6%)	18,20,20	1.51	4 (22%)
2	EPE	B	1209	-	15,15,15	1.35	2 (13%)	18,20,20	0.99	1 (5%)
2	EPE	C	1209	-	15,15,15	1.57	3 (20%)	18,20,20	2.86	10 (55%)

In the following table, the Chirals column lists the number of chiral outliers, the number of chiral centers analysed, the number of these observed in the model and the number defined in the Chemical Component Dictionary. Similar counts are reported in the Torsion and Rings columns. '-' means no outliers of that kind were identified.

Mol	Type	Chain	Res	Link	Chirals	Torsions	Rings
2	EPE	A	1209	-	-	2/9/19/19	0/1/1/1
2	EPE	D	1209	-	-	0/9/19/19	0/1/1/1
2	EPE	B	1210	-	-	1/9/19/19	0/1/1/1
2	EPE	B	1209	-	-	3/9/19/19	0/1/1/1

Continued on next page...

Continued from previous page...

Mol	Type	Chain	Res	Link	Chirals	Torsions	Rings
2	EPE	C	1209	-	-	1/9/19/19	0/1/1/1

All (10) bond length outliers are listed below:

Mol	Chain	Res	Type	Atoms	Z	Observed(Å)	Ideal(Å)
2	C	1209	EPE	C10-S	3.32	1.82	1.77
2	B	1209	EPE	C10-S	3.24	1.82	1.77
2	C	1209	EPE	C2-N1	2.69	1.54	1.46
2	B	1210	EPE	C2-N1	2.69	1.54	1.46
2	C	1209	EPE	O1S-S	-2.51	1.37	1.45
2	D	1209	EPE	C6-N1	2.31	1.53	1.46
2	A	1209	EPE	C6-N1	2.27	1.53	1.46
2	D	1209	EPE	C10-S	2.23	1.80	1.77
2	B	1209	EPE	C6-N1	2.20	1.53	1.46
2	D	1209	EPE	C2-N1	2.13	1.52	1.46

All (18) bond angle outliers are listed below:

Mol	Chain	Res	Type	Atoms	Z	Observed(°)	Ideal(°)
2	C	1209	EPE	C3-C2-N1	-6.80	96.69	110.64
2	C	1209	EPE	C7-N4-C5	-4.87	98.79	111.23
2	C	1209	EPE	O1S-S-C10	3.94	111.66	106.92
2	C	1209	EPE	C8-C7-N4	3.19	124.86	113.40
2	C	1209	EPE	C7-N4-C3	3.18	119.36	111.23
2	B	1210	EPE	C7-N4-C5	-3.05	103.45	111.23
2	B	1210	EPE	C9-N1-C6	-3.04	103.47	111.23
2	C	1209	EPE	C5-C6-N1	-2.79	104.92	110.64
2	C	1209	EPE	C6-N1-C2	2.75	115.02	108.83
2	B	1209	EPE	O1S-S-C10	-2.71	103.66	106.92
2	B	1210	EPE	C3-C2-N1	-2.70	105.10	110.64
2	B	1210	EPE	O2S-S-C10	-2.42	104.01	106.92
2	C	1209	EPE	O3S-S-C10	-2.40	101.89	105.77
2	C	1209	EPE	C9-N1-C6	-2.33	105.29	111.23
2	C	1209	EPE	C5-N4-C3	2.06	113.47	108.83
2	A	1209	EPE	C7-N4-C5	-2.06	105.98	111.23
2	A	1209	EPE	O1S-S-C10	-2.05	104.45	106.92
2	D	1209	EPE	C7-N4-C5	-2.00	106.11	111.23

There are no chirality outliers.

All (7) torsion outliers are listed below:

Mol	Chain	Res	Type	Atoms
2	B	1209	EPE	N4-C7-C8-O8
2	C	1209	EPE	C10-C9-N1-C2
2	B	1210	EPE	N4-C7-C8-O8
2	A	1209	EPE	C10-C9-N1-C2
2	A	1209	EPE	C10-C9-N1-C6
2	B	1209	EPE	C10-C9-N1-C2
2	B	1209	EPE	C10-C9-N1-C6

There are no ring outliers.

4 monomers are involved in 11 short contacts:

Mol	Chain	Res	Type	Clashes	Symm-Clashes
2	D	1209	EPE	2	0
2	B	1210	EPE	1	0
2	B	1209	EPE	3	0
2	C	1209	EPE	5	0

5.7 Other polymers [i](#)

There are no such residues in this entry.

5.8 Polymer linkage issues [i](#)

There are no chain breaks in this entry.

6 Fit of model and data

6.1 Protein, DNA and RNA chains

In the following table, the column labelled ‘#RSRZ> 2’ contains the number (and percentage) of RSRZ outliers, followed by percent RSRZ outliers for the chain as percentile scores relative to all X-ray entries and entries of similar resolution. The OWAB column contains the minimum, median, 95th percentile and maximum values of the occupancy-weighted average B-factor per residue. The column labelled ‘Q< 0.9’ lists the number of (and percentage) of residues with an average occupancy less than 0.9.

Mol	Chain	Analysed	<RSRZ>	#RSRZ>2	OWAB(Å ²)	Q<0.9
1	A	170/177 (96%)	0.53	21 (12%) 4 3	29, 52, 93, 120	0
1	B	170/177 (96%)	0.49	14 (8%) 11 11	28, 50, 83, 107	0
1	C	171/177 (96%)	0.59	23 (13%) 3 2	27, 54, 92, 112	0
1	D	170/177 (96%)	0.53	19 (11%) 5 4	29, 52, 84, 109	0
All	All	681/708 (96%)	0.53	77 (11%) 5 4	27, 53, 88, 120	0

All (77) RSRZ outliers are listed below:

Mol	Chain	Res	Type	RSRZ
1	B	53	ILE	6.0
1	A	56	ALA	5.8
1	A	58	LYS	4.9
1	C	56	ALA	4.7
1	B	40	HIS	4.7
1	D	208	GLU	4.5
1	A	53	ILE	4.4
1	D	97	LEU	4.4
1	A	39	VAL	4.2
1	A	168	ARG	4.2
1	C	40	HIS	4.1
1	A	88	VAL	3.9
1	C	99	PHE	3.9
1	C	87	PHE	3.8
1	D	53	ILE	3.8
1	D	54	ASP	3.8
1	D	99	PHE	3.7
1	A	57	LEU	3.6
1	D	189	CYS	3.5
1	D	207	SER	3.5
1	C	177	CYS	3.5

Continued on next page...

Continued from previous page...

Mol	Chain	Res	Type	RSRZ
1	A	55	PRO	3.5
1	C	53	ILE	3.4
1	D	168	ARG	3.4
1	C	55	PRO	3.3
1	C	54	ASP	3.3
1	A	40	HIS	3.2
1	C	38	TYR	3.2
1	B	88	VAL	3.1
1	B	54	ASP	3.1
1	A	108	VAL	3.1
1	C	106	SER	3.0
1	C	88	VAL	3.0
1	D	177	CYS	3.0
1	B	188	TRP	3.0
1	D	39	VAL	3.0
1	D	88	VAL	3.0
1	B	96	CYS	2.9
1	C	51	ILE	2.9
1	A	66	THR	2.9
1	A	86	ALA	2.8
1	B	56	ALA	2.8
1	D	57	LEU	2.8
1	D	98	TRP	2.8
1	C	197	ARG	2.8
1	C	39	VAL	2.8
1	D	79	GLY	2.7
1	B	99	PHE	2.6
1	C	134	ARG	2.6
1	C	86	ALA	2.5
1	C	65	ASN	2.5
1	B	78	LYS	2.4
1	C	78	LYS	2.4
1	D	86	ALA	2.4
1	C	57	LEU	2.4
1	D	87	PHE	2.4
1	B	97	LEU	2.4
1	A	87	PHE	2.3
1	B	98	TRP	2.3
1	D	188	TRP	2.2
1	C	156	ILE	2.2
1	A	62	LYS	2.2
1	A	96	CYS	2.2

Continued on next page...

Continued from previous page...

Mol	Chain	Res	Type	RSRZ
1	B	208	GLU	2.2
1	A	89	PHE	2.2
1	B	177	CYS	2.2
1	D	92	ALA	2.1
1	A	189	CYS	2.1
1	A	65	ASN	2.1
1	B	181	ARG	2.1
1	A	99	PHE	2.1
1	C	189	CYS	2.1
1	C	185	GLY	2.1
1	C	178	ARG	2.1
1	D	56	ALA	2.0
1	A	54	ASP	2.0
1	A	106	SER	2.0

6.2 Non-standard residues in protein, DNA, RNA chains [i](#)

There are no non-standard protein/DNA/RNA residues in this entry.

6.3 Carbohydrates [i](#)

There are no carbohydrates in this entry.

6.4 Ligands [i](#)

In the following table, the Atoms column lists the number of modelled atoms in the group and the number defined in the chemical component dictionary. The B-factors column lists the minimum, median, 95th percentile and maximum values of B factors of atoms in the group. The column labelled 'Q<0.9' lists the number of atoms with occupancy less than 0.9.

Mol	Type	Chain	Res	Atoms	RSCC	RSR	B-factors(\AA^2)	Q<0.9
2	EPE	C	1209	15/15	0.74	0.30	70,81,102,102	0
2	EPE	B	1209	15/15	0.87	0.23	69,76,81,81	0
2	EPE	B	1210	15/15	0.89	0.28	96,98,104,108	0
2	EPE	D	1209	15/15	0.92	0.19	54,78,85,86	0
2	EPE	A	1209	15/15	0.93	0.20	42,57,63,63	0

6.5 Other polymers [i](#)

There are no such residues in this entry.