



Full wwPDB X-ray Structure Validation Report ⓘ

May 26, 2020 – 12:55 am BST

PDB ID : 4GQ4
Title : Human menin with bound inhibitor MI-2-2
Authors : Shi, A.; Murai, M.J.; He, S.; Lund, G.L.; Hartley, T.; Purohit, T.; Reddy, G.;
Chruszcz, M.; Grembecka, J.; Cierpicki, T.
Deposited on : 2012-08-22
Resolution : 1.27 Å(reported)

This is a Full wwPDB X-ray Structure Validation Report for a publicly released PDB entry.

We welcome your comments at validation@mail.wwpdb.org

A user guide is available at

<https://www.wwpdb.org/validation/2017/XrayValidationReportHelp>

with specific help available everywhere you see the ⓘ symbol.

The following versions of software and data (see [references ⓘ](#)) were used in the production of this report:

MolProbity : 4.02b-467
Mogul : 1.8.5 (274361), CSD as541be (2020)
Xtriage (Phenix) : 1.13
EDS : 2.11
buster-report : 1.1.7 (2018)
Percentile statistics : 20191225.v01 (using entries in the PDB archive December 25th 2019)
Refmac : 5.8.0158
CCP4 : 7.0.044 (Gargrove)
Ideal geometry (proteins) : Engh & Huber (2001)
Ideal geometry (DNA, RNA) : Parkinson et al. (1996)
Validation Pipeline (wwPDB-VP) : 2.11

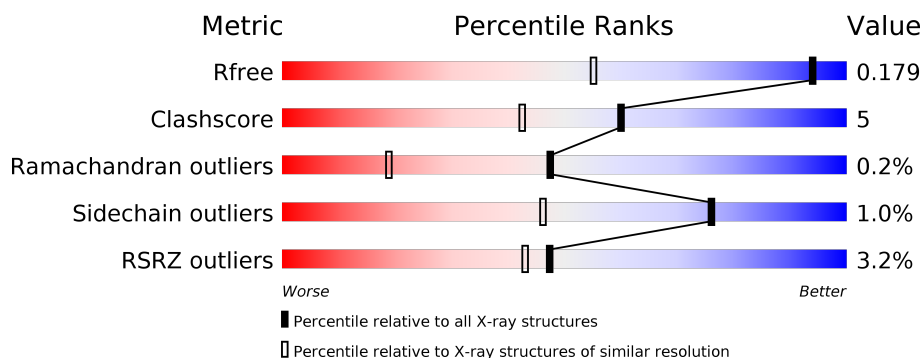
1 Overall quality at a glance

The following experimental techniques were used to determine the structure:

X-RAY DIFFRACTION

The reported resolution of this entry is 1.27 Å.

Percentile scores (ranging between 0-100) for global validation metrics of the entry are shown in the following graphic. The table shows the number of entries on which the scores are based.



Metric	Whole archive (#Entries)	Similar resolution (#Entries, resolution range(Å))
R_{free}	130704	1850 (1.30-1.26)
Clashscore	141614	1926 (1.30-1.26)
Ramachandran outliers	138981	1860 (1.30-1.26)
Sidechain outliers	138945	1859 (1.30-1.26)
RSRZ outliers	127900	1807 (1.30-1.26)

The table below summarises the geometric issues observed across the polymeric chains and their fit to the electron density. The red, orange, yellow and green segments on the lower bar indicate the fraction of residues that contain outliers for ≥ 3 , 2, 1 and 0 types of geometric quality criteria respectively. A grey segment represents the fraction of residues that are not modelled. The numeric value for each fraction is indicated below the corresponding segment, with a dot representing fractions $\leq 5\%$. The upper red bar (where present) indicates the fraction of residues that have poor fit to the electron density. The numeric value is given above the bar.

Mol	Chain	Length	Quality of chain
1	A	489	<div> <div>3%</div> <div>89%</div> <div>6%</div> </div>

The following table lists non-polymeric compounds, carbohydrate monomers and non-standard residues in protein, DNA, RNA chains that are outliers for geometric or electron-density-fit criteria:

Mol	Type	Chain	Res	Chirality	Geometry	Clashes	Electron density
3	UNX	A	602	-	-	X	-
3	UNX	A	603	-	-	X	-

Continued on next page...

Continued from previous page...

Mol	Type	Chain	Res	Chirality	Geometry	Clashes	Electron density
3	UNX	A	605	-	-	X	-

2 Entry composition

There are 8 unique types of molecules in this entry. The entry contains 4517 atoms, of which 0 are hydrogens and 0 are deuteriums.

In the tables below, the ZeroOcc column contains the number of atoms modelled with zero occupancy, the AltConf column contains the number of residues with at least one atom in alternate conformation and the Trace column contains the number of residues modelled with at most 2 atoms.

- Molecule 1 is a protein called Menin.

Mol	Chain	Residues	Atoms					ZeroOcc	AltConf	Trace
			Total	C	N	O	S			
1	A	469	3829	2440	658	714	17	0	17	1

There are 115 discrepancies between the modelled and reference sequences:

Chain	Residue	Modelled	Actual	Comment	Reference
A	-4	GLY	-	EXPRESSION TAG	UNP O00255
A	-3	GLY	-	EXPRESSION TAG	UNP O00255
A	-2	SER	-	EXPRESSION TAG	UNP O00255
A	-1	SER	-	EXPRESSION TAG	UNP O00255
A	0	SER	-	EXPRESSION TAG	UNP O00255
A	?	-	ILE	DELETION	UNP O00255
A	?	-	PRO	DELETION	UNP O00255
A	?	-	THR	DELETION	UNP O00255
A	?	-	ASN	DELETION	UNP O00255
A	?	-	VAL	DELETION	UNP O00255
A	?	-	PRO	DELETION	UNP O00255
A	?	-	GLU	DELETION	UNP O00255
A	?	-	LEU	DELETION	UNP O00255
A	?	-	THR	DELETION	UNP O00255
A	?	-	PHE	DELETION	UNP O00255
A	?	-	GLN	DELETION	UNP O00255
A	?	-	PRO	DELETION	UNP O00255
A	?	-	SER	DELETION	UNP O00255
A	?	-	PRO	DELETION	UNP O00255
A	?	-	ALA	DELETION	UNP O00255
A	?	-	PRO	DELETION	UNP O00255
A	?	-	ASP	DELETION	UNP O00255
A	?	-	PRO	DELETION	UNP O00255
A	?	-	PRO	DELETION	UNP O00255
A	?	-	GLY	DELETION	UNP O00255
A	?	-	GLU	DELETION	UNP O00255
A	?	-	GLU	DELETION	UNP O00255

Continued on next page...

Continued from previous page...

Chain	Residue	Modelled	Actual	Comment	Reference
A	?	-	ARG	DELETION	UNP O00255
A	?	-	PRO	DELETION	UNP O00255
A	?	-	GLY	DELETION	UNP O00255
A	?	-	GLU	DELETION	UNP O00255
A	?	-	GLN	DELETION	UNP O00255
A	?	-	SER	DELETION	UNP O00255
A	?	-	GLN	DELETION	UNP O00255
A	?	-	GLY	DELETION	UNP O00255
A	?	-	THR	DELETION	UNP O00255
A	?	-	GLN	DELETION	UNP O00255
A	?	-	ARG	DELETION	UNP O00255
A	?	-	GLU	DELETION	UNP O00255
A	?	-	ALA	DELETION	UNP O00255
A	?	-	GLU	DELETION	UNP O00255
A	?	-	ALA	DELETION	UNP O00255
A	?	-	ALA	DELETION	UNP O00255
A	?	-	GLU	DELETION	UNP O00255
A	?	-	ALA	DELETION	UNP O00255
A	?	-	GLU	DELETION	UNP O00255
A	?	-	GLU	DELETION	UNP O00255
A	?	-	PRO	DELETION	UNP O00255
A	?	-	TRP	DELETION	UNP O00255
A	?	-	GLY	DELETION	UNP O00255
A	?	-	GLU	DELETION	UNP O00255
A	?	-	GLU	DELETION	UNP O00255
A	?	-	ALA	DELETION	UNP O00255
A	?	-	ARG	DELETION	UNP O00255
A	?	-	GLU	DELETION	UNP O00255
A	?	-	GLY	DELETION	UNP O00255
A	?	-	ARG	DELETION	UNP O00255
A	?	-	ARG	DELETION	UNP O00255
A	?	-	ARG	DELETION	UNP O00255
A	?	-	GLY	DELETION	UNP O00255
A	?	-	PRO	DELETION	UNP O00255
A	?	-	ARG	DELETION	UNP O00255
A	?	-	ARG	DELETION	UNP O00255
A	?	-	GLU	DELETION	UNP O00255
A	?	-	SER	DELETION	UNP O00255
A	?	-	LYS	DELETION	UNP O00255
A	?	-	PRO	DELETION	UNP O00255
A	?	-	GLU	DELETION	UNP O00255
A	?	-	GLU	DELETION	UNP O00255

Continued on next page...

Continued from previous page...

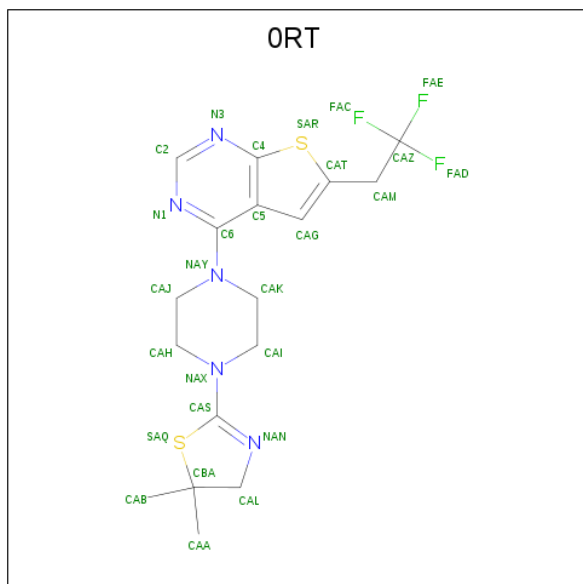
Chain	Residue	Modelled	Actual	Comment	Reference
A	?	-	PRO	DELETION	UNP O00255
A	?	-	PRO	DELETION	UNP O00255
A	?	-	PRO	DELETION	UNP O00255
A	?	-	PRO	DELETION	UNP O00255
A	?	-	LYS	DELETION	UNP O00255
A	?	-	LYS	DELETION	UNP O00255
A	?	-	PRO	DELETION	UNP O00255
A	?	-	ALA	DELETION	UNP O00255
A	?	-	LEU	DELETION	UNP O00255
A	?	-	ASP	DELETION	UNP O00255
A	?	-	LYS	DELETION	UNP O00255
A	?	-	GLY	DELETION	UNP O00255
A	?	-	LEU	DELETION	UNP O00255
A	?	-	GLY	DELETION	UNP O00255
A	?	-	THR	DELETION	UNP O00255
A	?	-	GLY	DELETION	UNP O00255
A	?	-	GLN	DELETION	UNP O00255
A	?	-	GLY	DELETION	UNP O00255
A	?	-	ALA	DELETION	UNP O00255
A	?	-	VAL	DELETION	UNP O00255
A	?	-	SER	DELETION	UNP O00255
A	?	-	GLY	DELETION	UNP O00255
A	?	-	PRO	DELETION	UNP O00255
A	?	-	PRO	DELETION	UNP O00255
A	?	-	ARG	DELETION	UNP O00255
A	?	-	LYS	DELETION	UNP O00255
A	?	-	PRO	DELETION	UNP O00255
A	?	-	PRO	DELETION	UNP O00255
A	?	-	GLY	DELETION	UNP O00255
A	?	-	THR	DELETION	UNP O00255
A	?	-	VAL	DELETION	UNP O00255
A	?	-	ALA	DELETION	UNP O00255
A	?	-	GLY	DELETION	UNP O00255
A	?	-	THR	DELETION	UNP O00255
A	?	-	ALA	DELETION	UNP O00255
A	?	-	ARG	DELETION	UNP O00255
A	?	-	GLY	DELETION	UNP O00255
A	?	-	PRO	DELETION	UNP O00255
A	?	-	GLU	DELETION	UNP O00255
A	?	-	GLY	DELETION	UNP O00255
A	?	-	GLY	DELETION	UNP O00255
A	?	-	SER	DELETION	UNP O00255

Continued on next page...

Continued from previous page...

Chain	Residue	Modelled	Actual	Comment	Reference
A	?	-	THR	DELETION	UNP O00255
A	?	-	ALA	DELETION	UNP O00255
A	?	-	GLN	DELETION	UNP O00255
A	541	ALA	THR	ENGINEERED MUTATION	UNP O00255

- Molecule 2 is 4-[4-(5,5-dimethyl-4,5-dihydro-1,3-thiazol-2-yl)piperazin-1-yl]-6-(2,2,2-trifluoroethyl)thieno[2,3-d]pyrimidine (three-letter code: ORT) (formula: C₁₇H₂₀F₃N₅S₂).

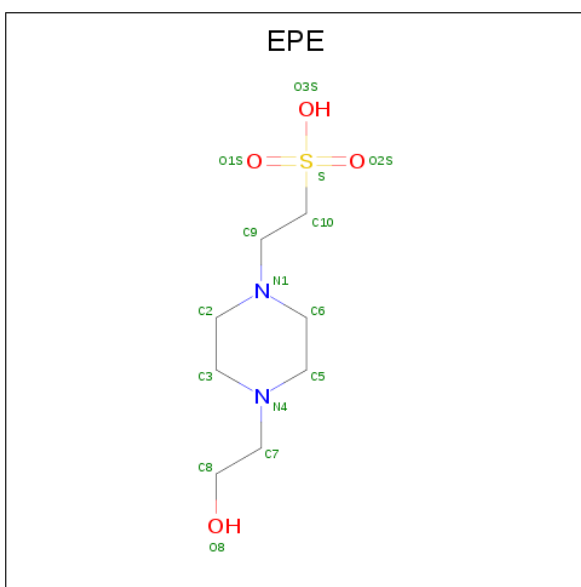


Mol	Chain	Residues	Atoms					ZeroOcc	AltConf
2	A	1	Total	C	F	N	S	0	0
			27	17	3	5	2		

- Molecule 3 is UNKNOWN ATOM OR ION (three-letter code: UNX) (formula: X).

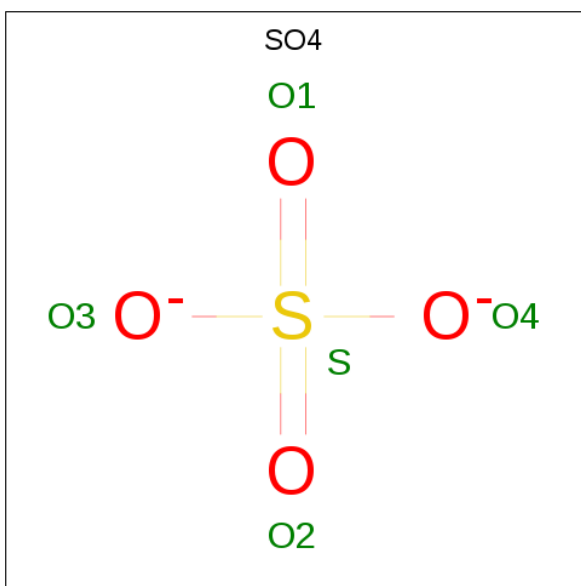
Mol	Chain	Residues	Atoms		ZeroOcc	AltConf
3	A	5	Total	X	0	0
			5	5		

- Molecule 4 is 4-(2-HYDROXYETHYL)-1-PIPERAZINE ETHANESULFONIC ACID (three-letter code: EPE) (formula: C₈H₁₈N₂O₄S).



Mol	Chain	Residues	Atoms					ZeroOcc	AltConf
4	A	1	Total	C	N	O	S	0	0
			15	8	2	4	1		

- Molecule 5 is SULFATE ION (three-letter code: SO4) (formula: O₄S).



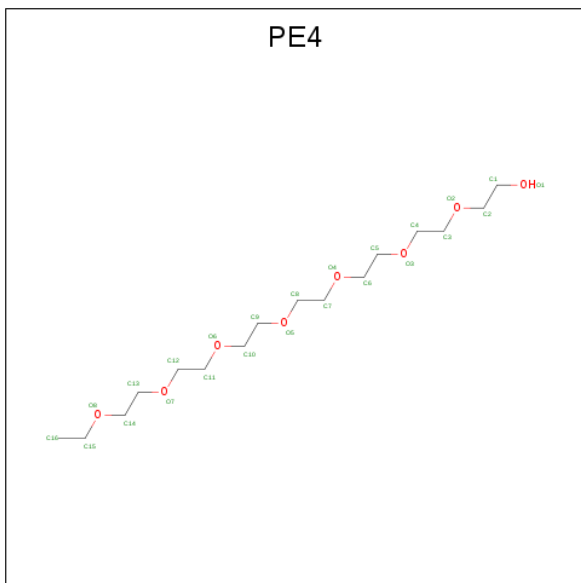
Mol	Chain	Residues	Atoms			ZeroOcc	AltConf
5	A	1	Total	O	S	0	0
			5	4	1		
5	A	1	Total	O	S	0	0
			5	4	1		
5	A	1	Total	O	S	0	0
			5	4	1		

Continued on next page...

Continued from previous page...

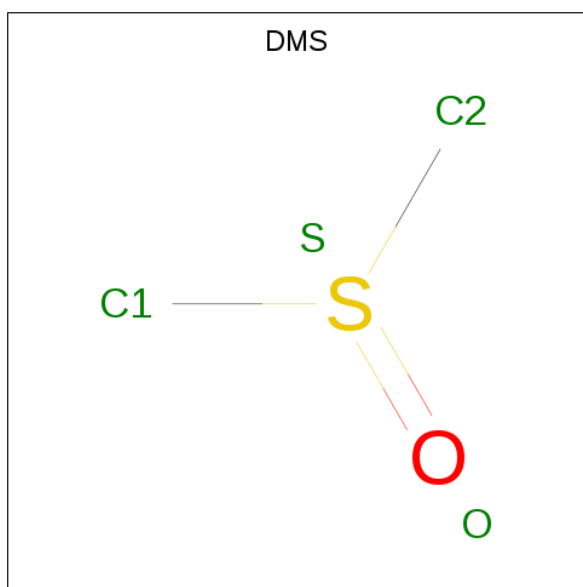
Mol	Chain	Residues	Atoms			ZeroOcc	AltConf
5	A	1	Total	O	S	0	0
			5	4	1		

- Molecule 6 is 2-{2-[2-(2-{2-[2-(2-ETHOXY-ETHOXY)-ETHOXY]-ETHOXY}-ETHOXY)-ETHOXY]-ETHOXY}-ETHANOL (three-letter code: PE4) (formula: C₁₆H₃₄O₈).



Mol	Chain	Residues	Atoms			ZeroOcc	AltConf
6	A	1	Total	C	O	0	0
			13	8	5		
6	A	1	Total	C	O	0	0
			10	6	4		

- Molecule 7 is DIMETHYL SULFOXIDE (three-letter code: DMS) (formula: C₂H₆OS).



Mol	Chain	Residues	Atoms				ZeroOcc	AltConf
7	A	1	Total	C	O	S	0	0
			4	2	1	1		

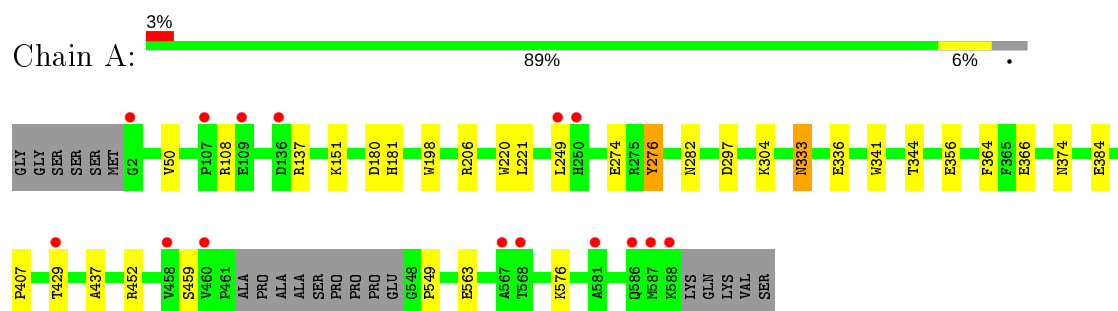
- Molecule 8 is water.

Mol	Chain	Residues	Atoms		ZeroOcc	AltConf
8	A	594	Total	O	0	0
			594	594		

3 Residue-property plots [i](#)

These plots are drawn for all protein, RNA and DNA chains in the entry. The first graphic for a chain summarises the proportions of the various outlier classes displayed in the second graphic. The second graphic shows the sequence view annotated by issues in geometry and electron density. Residues are color-coded according to the number of geometric quality criteria for which they contain at least one outlier: green = 0, yellow = 1, orange = 2 and red = 3 or more. A red dot above a residue indicates a poor fit to the electron density ($RSRZ > 2$). Stretches of 2 or more consecutive residues without any outlier are shown as a green connector. Residues present in the sample, but not in the model, are shown in grey.

• Molecule 1: Menin



4 Data and refinement statistics

Property	Value	Source
Space group	P 21 21 21	Depositor
Cell constants a, b, c, α , β , γ	49.04Å 80.16Å 124.81Å 90.00° 90.00° 90.00°	Depositor
Resolution (Å)	40.08 – 1.27 39.67 – 1.27	Depositor EDS
% Data completeness (in resolution range)	96.4 (40.08-1.27) 96.4 (39.67-1.27)	Depositor EDS
R_{merge}	(Not available)	Depositor
R_{sym}	0.11	Depositor
$\langle I/\sigma(I) \rangle$ ¹	3.25 (at 1.27Å)	Xtriage
Refinement program	REFMAC 5.6.0117	Depositor
R, R_{free}	0.149 , 0.182 0.150 , 0.179	Depositor DCC
R_{free} test set	6276 reflections (5.00%)	wwPDB-VP
Wilson B-factor (Å ²)	16.8	Xtriage
Anisotropy	0.552	Xtriage
Bulk solvent k_{sol} (e/Å ³), B_{sol} (Å ²)	0.34 , 40.8	EDS
L-test for twinning ²	$\langle L \rangle = 0.50$, $\langle L^2 \rangle = 0.34$	Xtriage
Estimated twinning fraction	No twinning to report.	Xtriage
F_o, F_c correlation	0.98	EDS
Total number of atoms	4517	wwPDB-VP
Average B, all atoms (Å ²)	23.0	wwPDB-VP

Xtriage's analysis on translational NCS is as follows: *The largest off-origin peak in the Patterson function is 5.85% of the height of the origin peak. No significant pseudotranslation is detected.*

¹Intensities estimated from amplitudes.

²Theoretical values of $\langle |L| \rangle$, $\langle L^2 \rangle$ for acentric reflections are 0.5, 0.333 respectively for untwinned datasets, and 0.375, 0.2 for perfectly twinned datasets.

5 Model quality [i](#)

5.1 Standard geometry [i](#)

Bond lengths and bond angles in the following residue types are not validated in this section: 0RT, PE4, UNX, DMS, SO4, EPE

The Z score for a bond length (or angle) is the number of standard deviations the observed value is removed from the expected value. A bond length (or angle) with $|Z| > 5$ is considered an outlier worth inspection. RMSZ is the root-mean-square of all Z scores of the bond lengths (or angles).

Mol	Chain	Bond lengths		Bond angles	
		RMSZ	$\# Z > 5$	RMSZ	$\# Z > 5$
1	A	1.04	1/3911 (0.0%)	0.98	3/5302 (0.1%)

All (1) bond length outliers are listed below:

Mol	Chain	Res	Type	Atoms	Z	Observed(Å)	Ideal(Å)
1	A	563	GLU	CD-OE2	-5.42	1.19	1.25

All (3) bond angle outliers are listed below:

Mol	Chain	Res	Type	Atoms	Z	Observed(°)	Ideal(°)
1	A	297	ASP	CB-CG-OD2	-5.89	113.00	118.30
1	A	276	TYR	CB-CG-CD1	5.49	124.29	121.00
1	A	452	ARG	NE-CZ-NH2	-5.43	117.59	120.30

There are no chirality outliers.

There are no planarity outliers.

5.2 Too-close contacts [i](#)

In the following table, the Non-H and H(model) columns list the number of non-hydrogen atoms and hydrogen atoms in the chain respectively. The H(added) column lists the number of hydrogen atoms added and optimized by MolProbity. The Clashes column lists the number of clashes within the asymmetric unit, whereas Symm-Clashes lists symmetry related clashes.

Mol	Chain	Non-H	H(model)	H(added)	Clashes	Symm-Clashes
1	A	3829	0	3770	29	0
2	A	27	0	20	2	0
3	A	5	0	0	4	0
4	A	15	0	18	3	0

Continued on next page...

Continued from previous page...

Mol	Chain	Non-H	H(model)	H(added)	Clashes	Symm-Clashes
5	A	20	0	0	1	0
6	A	23	0	28	1	0
7	A	4	0	6	0	0
8	A	594	0	0	13	0
All	All	4517	0	3842	36	0

The all-atom clashscore is defined as the number of clashes found per 1000 atoms (including hydrogen atoms). The all-atom clashscore for this structure is 5.

All (36) close contacts within the same asymmetric unit are listed below, sorted by their clash magnitude.

Atom-1	Atom-2	Interatomic distance (Å)	Clash overlap (Å)
1:A:50:VAL:O	4:A:607:EPE:H82	1.32	1.23
1:A:333[A]:ASN:ND2	1:A:336[A]:GLU:OE1	1.76	1.18
1:A:137:ARG:HG3	8:A:1291:HOH:O	1.83	0.79
1:A:374:ASN:HB3	8:A:1143:HOH:O	1.85	0.76
1:A:50:VAL:O	4:A:607:EPE:C8	2.25	0.76
1:A:341:TRP:O	1:A:344[B]:THR:HG22	1.88	0.73
1:A:366[A]:GLU:HG2	8:A:977:HOH:O	1.88	0.72
3:A:604:UNX:UNK	3:A:605:UNX:UNK	1.35	0.71
1:A:206:ARG:NH1	8:A:774:HOH:O	2.24	0.70
1:A:429:THR:CG2	8:A:979:HOH:O	2.42	0.68
1:A:151:LYS:NZ	8:A:1034:HOH:O	2.23	0.65
1:A:274[B]:GLU:OE2	1:A:304[B]:LYS:NZ	2.20	0.64
1:A:366[A]:GLU:HG3	8:A:1132:HOH:O	2.00	0.62
1:A:333[A]:ASN:CG	1:A:336[A]:GLU:OE1	2.40	0.60
1:A:407:PRO:HB2	1:A:549:PRO:HG2	1.84	0.59
1:A:384:GLU:HG3	8:A:1271:HOH:O	2.02	0.59
1:A:206:ARG:NH2	8:A:996:HOH:O	2.37	0.58
3:A:602:UNX:UNK	3:A:603:UNX:UNK	1.49	0.56
1:A:304[B]:LYS:NZ	8:A:963:HOH:O	2.38	0.55
1:A:344[B]:THR:HG23	1:A:364:PHE:CE1	2.44	0.52
1:A:344[B]:THR:HG23	1:A:364:PHE:HE1	1.77	0.48
1:A:429:THR:HG22	8:A:979:HOH:O	2.10	0.48
1:A:198:TRP:CD2	6:A:613:PE4:H31	2.49	0.48
2:A:601:0RT:H6	2:A:601:0RT:CAG	2.46	0.46
2:A:601:0RT:H6	2:A:601:0RT:H3	1.97	0.45
1:A:437:ALA:HB1	1:A:576:LYS:HG2	1.98	0.45
1:A:180:ASP:HB2	1:A:220:TRP:CH2	2.53	0.44
1:A:282[B]:ASN:OD1	8:A:1030:HOH:O	2.21	0.43
4:A:607:EPE:H52	4:A:607:EPE:H81	1.86	0.43

Continued on next page...

Continued from previous page...

Atom-1	Atom-2	Interatomic distance (Å)	Clash overlap (Å)
1:A:333[A]:ASN:C	1:A:333[A]:ASN:HD22	2.21	0.42
3:A:602:UNX:UNK	3:A:605:UNX:UNK	1.64	0.41
3:A:603:UNX:UNK	3:A:605:UNX:UNK	1.62	0.41
1:A:151:LYS:HE2	5:A:610:SO4:O1	2.20	0.41
1:A:181:HIS:HB2	1:A:221:LEU:HD11	2.03	0.41
1:A:249:LEU:HD23	1:A:249:LEU:HA	1.95	0.41
1:A:374:ASN:CG	8:A:1284:HOH:O	2.58	0.40

There are no symmetry-related clashes.

5.3 Torsion angles [i](#)

5.3.1 Protein backbone [i](#)

In the following table, the Percentiles column shows the percent Ramachandran outliers of the chain as a percentile score with respect to all X-ray entries followed by that with respect to entries of similar resolution.

The Analysed column shows the number of residues for which the backbone conformation was analysed, and the total number of residues.

Mol	Chain	Analysed	Favoured	Allowed	Outliers	Percentiles
1	A	482/489 (99%)	472 (98%)	9 (2%)	1 (0%)	47 19

All (1) Ramachandran outliers are listed below:

Mol	Chain	Res	Type
1	A	356	GLU

5.3.2 Protein sidechains [i](#)

In the following table, the Percentiles column shows the percent sidechain outliers of the chain as a percentile score with respect to all X-ray entries followed by that with respect to entries of similar resolution.

The Analysed column shows the number of residues for which the sidechain conformation was analysed, and the total number of residues.

Mol	Chain	Analysed	Rotameric	Outliers	Percentiles
1	A	408/410 (100%)	402 (98%)	6 (2%)	65 30

All (6) residues with a non-rotameric sidechain are listed below:

Mol	Chain	Res	Type
1	A	108[A]	ARG
1	A	108[B]	ARG
1	A	276	TYR
1	A	333[A]	ASN
1	A	333[B]	ASN
1	A	459	SER

Some sidechains can be flipped to improve hydrogen bonding and reduce clashes. There are no such sidechains identified.

5.3.3 RNA ⓘ

There are no RNA molecules in this entry.

5.4 Non-standard residues in protein, DNA, RNA chains ⓘ

There are no non-standard protein/DNA/RNA residues in this entry.

5.5 Carbohydrates ⓘ

There are no carbohydrates in this entry.

5.6 Ligand geometry ⓘ

Of 14 ligands modelled in this entry, 5 are unknown - leaving 9 for Mogul analysis.

In the following table, the Counts columns list the number of bonds (or angles) for which Mogul statistics could be retrieved, the number of bonds (or angles) that are observed in the model and the number of bonds (or angles) that are defined in the Chemical Component Dictionary. The Link column lists molecule types, if any, to which the group is linked. The Z score for a bond length (or angle) is the number of standard deviations the observed value is removed from the expected value. A bond length (or angle) with $|Z| > 2$ is considered an outlier worth inspection. RMSZ is the root-mean-square of all Z scores of the bond lengths (or angles).

Mol	Type	Chain	Res	Link	Bond lengths			Bond angles		
					Counts	RMSZ	$\# Z > 2$	Counts	RMSZ	$\# Z > 2$
7	DMS	A	614	-	3,3,3	0.86	0	3,3,3	0.43	0
5	SO4	A	611	-	4,4,4	0.23	0	6,6,6	1.02	0
2	ORT	A	601	-	26,30,30	4.04	10 (38%)	27,46,46	2.06	11 (40%)
5	SO4	A	610	-	4,4,4	0.24	0	6,6,6	0.44	0

Mol	Type	Chain	Res	Link	Bond lengths			Bond angles		
					Counts	RMSZ	# Z > 2	Counts	RMSZ	# Z > 2
6	PE4	A	612	-	12,12,23	0.92	0	11,11,22	0.60	0
5	SO4	A	608	-	4,4,4	0.26	0	6,6,6	0.66	0
6	PE4	A	613	-	9,9,23	0.47	0	8,8,22	0.70	0
5	SO4	A	609	-	4,4,4	0.21	0	6,6,6	0.67	0
4	EPE	A	607	-	15,15,15	2.62	2 (13%)	18,20,20	2.12	5 (27%)

In the following table, the Chirals column lists the number of chiral outliers, the number of chiral centers analysed, the number of these observed in the model and the number defined in the Chemical Component Dictionary. Similar counts are reported in the Torsion and Rings columns. '-' means no outliers of that kind were identified.

Mol	Type	Chain	Res	Link	Chirals	Torsions	Rings
6	PE4	A	612	-	-	4/10/10/21	-
4	EPE	A	607	-	-	6/9/19/19	0/1/1/1
2	ORT	A	601	-	-	2/11/34/34	0/4/4/4
6	PE4	A	613	-	-	6/7/7/21	-

All (12) bond length outliers are listed below:

Mol	Chain	Res	Type	Atoms	Z	Observed(Å)	Ideal(Å)
2	A	601	ORT	CAM-CAT	-17.00	1.43	1.50
4	A	607	EPE	C10-S	-8.90	1.64	1.77
2	A	601	ORT	CAH-NAX	5.58	1.56	1.47
2	A	601	ORT	CAS-SAQ	-4.64	1.68	1.75
2	A	601	ORT	CAS-NAN	4.51	1.32	1.27
4	A	607	EPE	O2S-S	4.50	1.58	1.45
2	A	601	ORT	FAE-CAZ	-4.37	1.16	1.33
2	A	601	ORT	CAB-CBA	-2.61	1.48	1.53
2	A	601	ORT	C2-N1	2.59	1.38	1.33
2	A	601	ORT	FAC-CAZ	2.37	1.42	1.33
2	A	601	ORT	CAM-CAZ	2.34	1.52	1.49
2	A	601	ORT	FAD-CAZ	2.26	1.42	1.33

All (16) bond angle outliers are listed below:

Mol	Chain	Res	Type	Atoms	Z	Observed(°)	Ideal(°)
4	A	607	EPE	O3S-S-C10	5.90	115.31	105.77
2	A	601	ORT	CAB-CBA-CAA	4.47	117.40	109.26
4	A	607	EPE	O2S-S-O1S	-3.38	102.27	113.95
4	A	607	EPE	O3S-S-O2S	-3.36	103.06	111.27
2	A	601	ORT	SAQ-CAS-NAN	-3.34	113.98	118.63

Continued on next page...

Continued from previous page...

Mol	Chain	Res	Type	Atoms	Z	Observed(°)	Ideal(°)
2	A	601	0RT	FAD-CAZ-FAC	-3.34	94.17	106.43
2	A	601	0RT	C5-C4-N3	-3.01	119.94	124.94
2	A	601	0RT	C2-N3-C4	2.91	120.26	113.45
4	A	607	EPE	O3S-S-O1S	2.84	118.21	111.27
2	A	601	0RT	N3-C2-N1	-2.64	124.56	128.68
2	A	601	0RT	CAT-CAG-C5	2.54	119.23	110.03
2	A	601	0RT	CAJ-NAY-CAK	2.49	117.02	111.52
4	A	607	EPE	O1S-S-C10	2.33	109.72	106.92
2	A	601	0RT	C5-C4-SAR	2.17	114.47	112.24
2	A	601	0RT	NAX-CAS-NAN	2.11	126.33	123.34
2	A	601	0RT	CAJ-CAH-NAX	-2.02	106.11	110.44

There are no chirality outliers.

All (18) torsion outliers are listed below:

Mol	Chain	Res	Type	Atoms
4	A	607	EPE	C10-C9-N1-C6
4	A	607	EPE	C8-C7-N4-C5
6	A	613	PE4	O3-C5-C6-O4
6	A	612	PE4	O4-C7-C8-O5
6	A	612	PE4	O6-C10-C9-O5
4	A	607	EPE	C9-C10-S-O3S
4	A	607	EPE	C10-C9-N1-C2
4	A	607	EPE	N4-C7-C8-O8
6	A	613	PE4	O2-C3-C4-O3
6	A	612	PE4	C7-C8-O5-C9
6	A	613	PE4	C3-C4-O3-C5
6	A	613	PE4	C8-C7-O4-C6
6	A	613	PE4	C6-C5-O3-C4
4	A	607	EPE	C8-C7-N4-C3
2	A	601	0RT	N1-C6-NAY-CAK
2	A	601	0RT	C5-C6-NAY-CAK
6	A	613	PE4	O4-C7-C8-O5
6	A	612	PE4	C10-C9-O5-C8

There are no ring outliers.

4 monomers are involved in 7 short contacts:

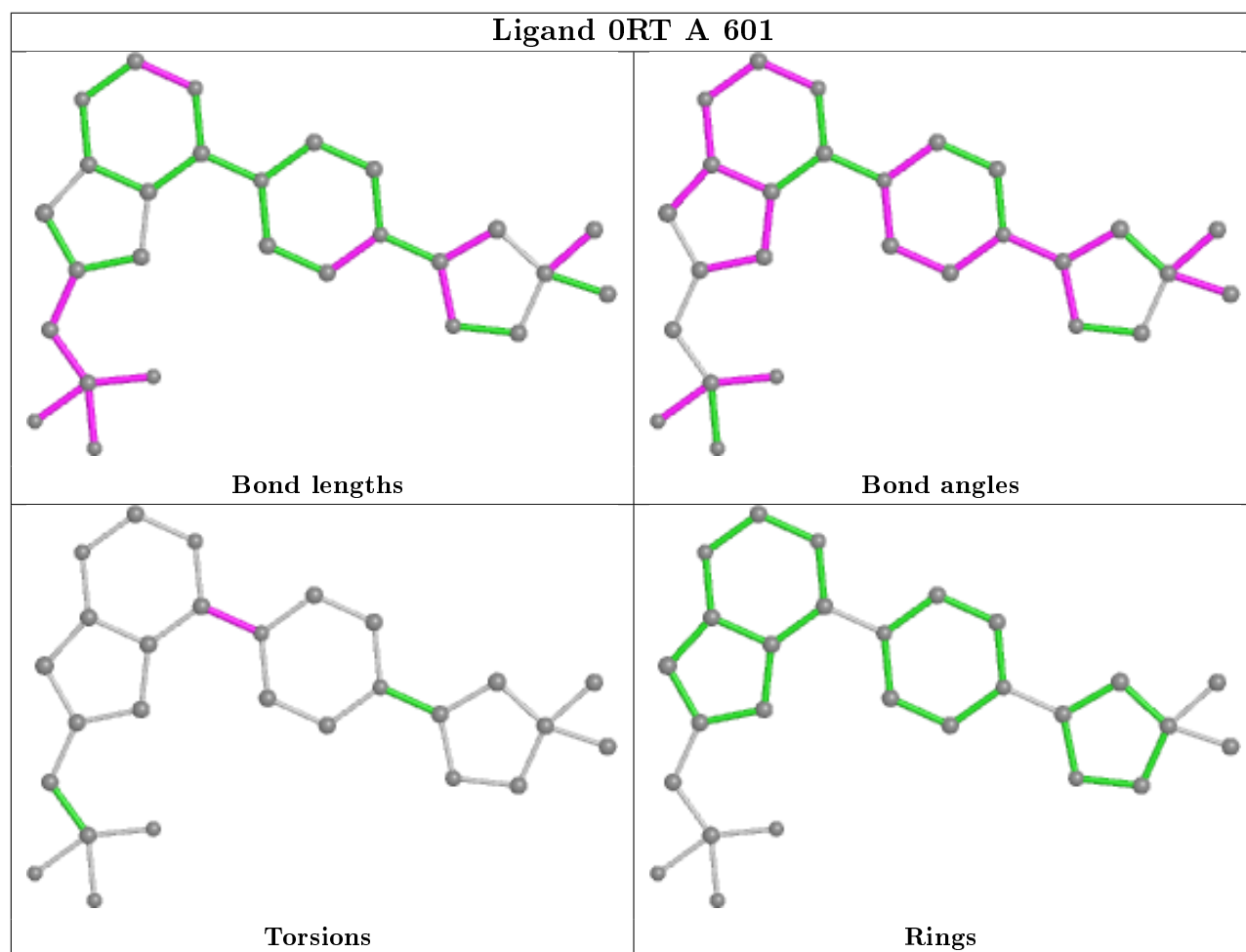
Mol	Chain	Res	Type	Clashes	Symm-Clashes
2	A	601	0RT	2	0
5	A	610	SO4	1	0

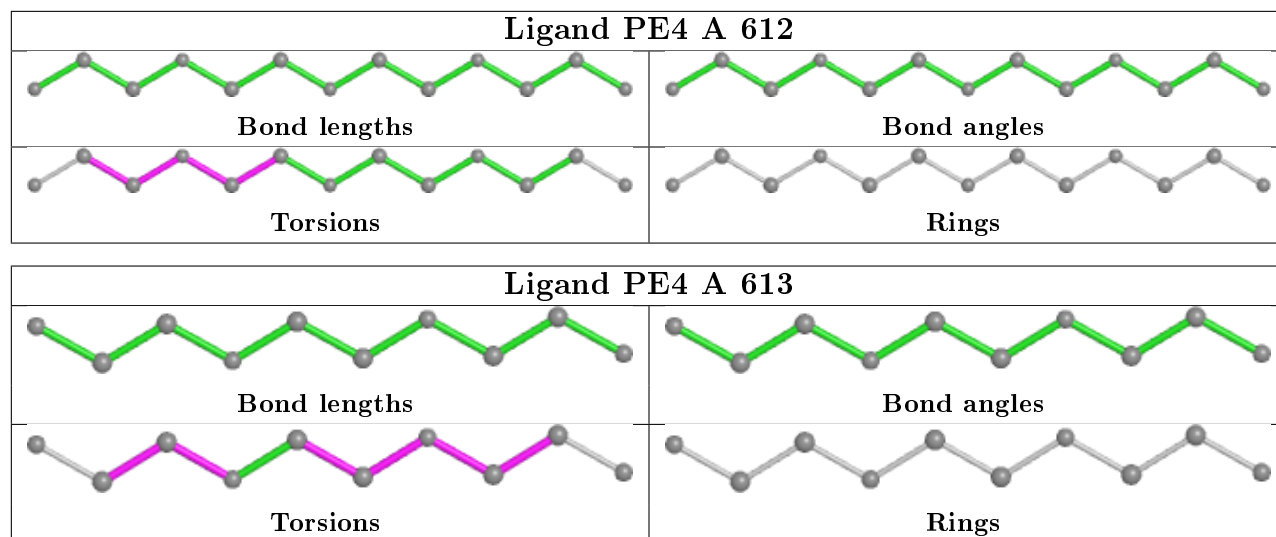
Continued on next page...

Continued from previous page...

Mol	Chain	Res	Type	Clashes	Symm-Clashes
6	A	613	PE4	1	0
4	A	607	EPE	3	0

The following is a two-dimensional graphical depiction of Mogul quality analysis of bond lengths, bond angles, torsion angles, and ring geometry for all instances of the Ligand of Interest. In addition, ligands with molecular weight > 250 and outliers as shown on the validation Tables will also be included. For torsion angles, if less than 5% of the Mogul distribution of torsion angles is within 10 degrees of the torsion angle in question, then that torsion angle is considered an outlier. Any bond that is central to one or more torsion angles identified as an outlier by Mogul will be highlighted in the graph. For rings, the root-mean-square deviation (RMSD) between the ring in question and similar rings identified by Mogul is calculated over all ring torsion angles. If the average RMSD is greater than 60 degrees and the minimal RMSD between the ring in question and any Mogul-identified rings is also greater than 60 degrees, then that ring is considered an outlier. The outliers are highlighted in purple. The color gray indicates Mogul did not find sufficient equivalents in the CSD to analyse the geometry.





5.7 Other polymers [i](#)

There are no such residues in this entry.

5.8 Polymer linkage issues [i](#)

There are no chain breaks in this entry.

6 Fit of model and data [i](#)

6.1 Protein, DNA and RNA chains [i](#)

In the following table, the column labelled ‘#RSRZ> 2’ contains the number (and percentage) of RSRZ outliers, followed by percent RSRZ outliers for the chain as percentile scores relative to all X-ray entries and entries of similar resolution. The OWAB column contains the minimum, median, 95th percentile and maximum values of the occupancy-weighted average B-factor per residue. The column labelled ‘Q< 0.9’ lists the number of (and percentage) of residues with an average occupancy less than 0.9.

Mol	Chain	Analysed	<RSRZ>	#RSRZ>2	OWAB(Å ²)	Q<0.9
1	A	469/489 (95%)	-0.17	15 (3%) 47 43	13, 18, 43, 60	2 (0%)

All (15) RSRZ outliers are listed below:

Mol	Chain	Res	Type	RSRZ
1	A	107	PRO	5.4
1	A	2	GLY	4.7
1	A	587	MET	4.5
1	A	109	GLU	3.3
1	A	586	GLN	3.2
1	A	568	THR	3.0
1	A	460	VAL	2.8
1	A	249	LEU	2.8
1	A	250	HIS	2.6
1	A	588	LYS	2.5
1	A	581	ALA	2.5
1	A	567	ALA	2.3
1	A	429	THR	2.3
1	A	136[A]	ASP	2.2
1	A	458	VAL	2.1

6.2 Non-standard residues in protein, DNA, RNA chains [i](#)

There are no non-standard protein/DNA/RNA residues in this entry.

6.3 Carbohydrates [i](#)

There are no carbohydrates in this entry.

6.4 Ligands ⓘ

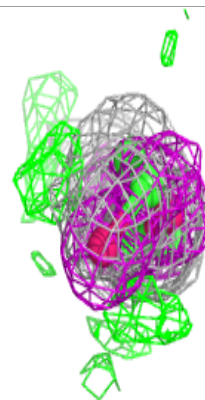
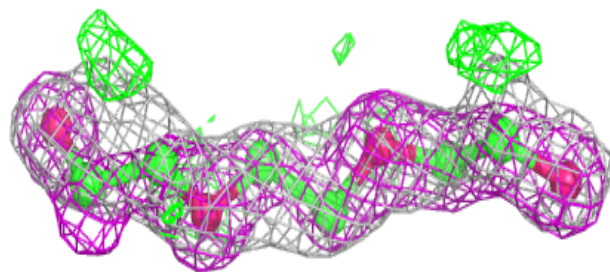
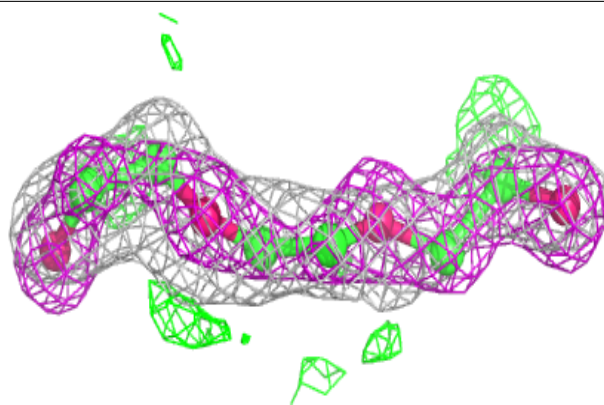
In the following table, the Atoms column lists the number of modelled atoms in the group and the number defined in the chemical component dictionary. The B-factors column lists the minimum, median, 95th percentile and maximum values of B factors of atoms in the group. The column labelled 'Q<0.9' lists the number of atoms with occupancy less than 0.9.

Mol	Type	Chain	Res	Atoms	RSCC	RSR	B-factors(Å ²)	Q<0.9
6	PE4	A	613	10/24	0.72	0.38	20,21,22,22	0
6	PE4	A	612	13/24	0.79	0.23	20,20,21,22	0
5	SO4	A	608	5/5	0.88	0.13	44,44,49,55	5
4	EPE	A	607	15/15	0.93	0.18	19,34,40,40	15
5	SO4	A	611	5/5	0.94	0.12	32,34,41,42	5
3	UNX	A	603	1/1	0.94	0.29	34,34,34,34	1
3	UNX	A	605	1/1	0.95	0.17	16,16,16,16	1
5	SO4	A	609	5/5	0.95	0.12	34,35,39,49	5
7	DMS	A	614	4/4	0.95	0.28	20,20,20,21	0
3	UNX	A	606	1/1	0.96	0.21	33,33,33,33	0
5	SO4	A	610	5/5	0.96	0.07	39,41,49,51	5
3	UNX	A	602	1/1	0.96	0.21	28,28,28,28	1
2	ORT	A	601	27/27	0.97	0.06	12,15,22,24	0
3	UNX	A	604	1/1	0.97	0.19	31,31,31,31	1

The following is a graphical depiction of the model fit to experimental electron density of all instances of the Ligand of Interest. In addition, ligands with molecular weight > 250 and outliers as shown on the geometry validation Tables will also be included. Each fit is shown from different orientation to approximate a three-dimensional view.

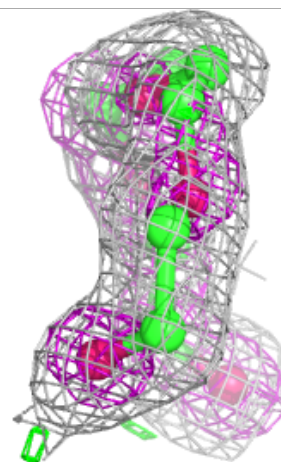
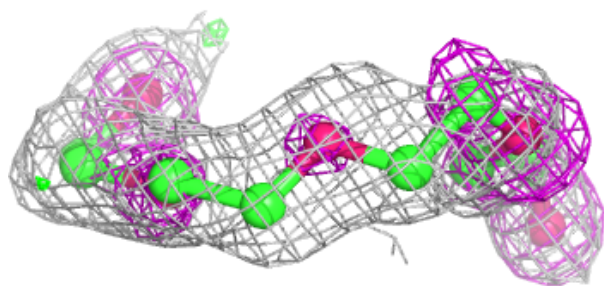
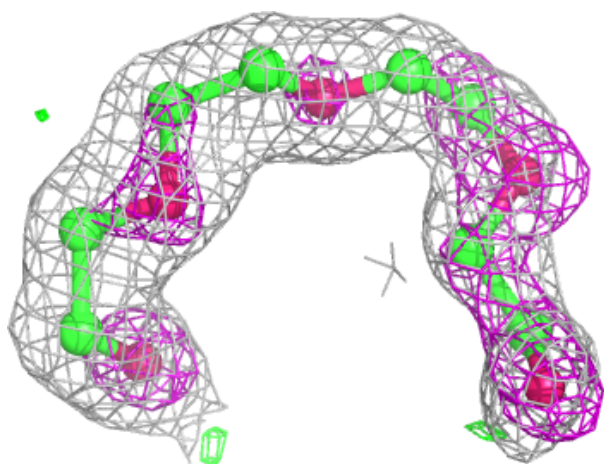
Electron density around PE4 A 613:

$2mF_o-DF_c$ (at 0.7 rmsd) in gray
 mF_o-DF_c (at 3 rmsd) in purple (negative)
and green (positive)



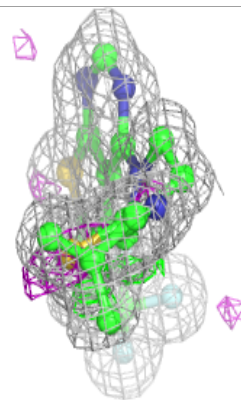
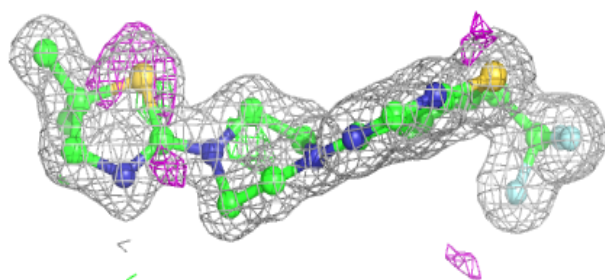
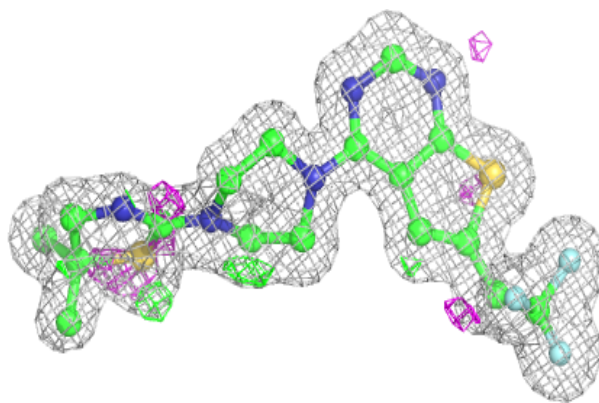
Electron density around PE4 A 612:

$2mF_o-DF_c$ (at 0.7 rmsd) in gray
 mF_o-DF_c (at 3 rmsd) in purple (negative)
and green (positive)



Electron density around 0RT A 601:

$2mF_o-DF_c$ (at 0.7 rmsd) in gray
 mF_o-DF_c (at 3 rmsd) in purple (negative)
and green (positive)



6.5 Other polymers [i](#)

There are no such residues in this entry.