



# Full wwPDB X-ray Structure Validation Report ⓘ

Aug 9, 2020 – 05:02 PM BST

PDB ID : 5GQX  
Title : Crystal structure of branching enzyme W610N mutant from *Cyanothece* sp. ATCC 51142 in complex with maltoheptaose  
Authors : Suzuki, R.; Suzuki, E.  
Deposited on : 2016-08-08  
Resolution : 2.30 Å(reported)

This is a Full wwPDB X-ray Structure Validation Report for a publicly released PDB entry.

We welcome your comments at [validation@mail.wwpdb.org](mailto:validation@mail.wwpdb.org)

A user guide is available at

<https://www.wwpdb.org/validation/2017/XrayValidationReportHelp>

with specific help available everywhere you see the ⓘ symbol.

---

The following versions of software and data (see [references ⓘ](#)) were used in the production of this report:

MolProbity : 4.02b-467  
Mogul : 1.8.5 (274361), CSD as541be (2020)  
Xtriage (Phenix) : 1.13  
EDS : 2.13.1  
Percentile statistics : 20191225.v01 (using entries in the PDB archive December 25th 2019)  
Refmac : 5.8.0158  
CCP4 : 7.0.044 (Gargrove)  
Ideal geometry (proteins) : Engh & Huber (2001)  
Ideal geometry (DNA, RNA) : Parkinson et al. (1996)  
Validation Pipeline (wwPDB-VP) : 2.13.1

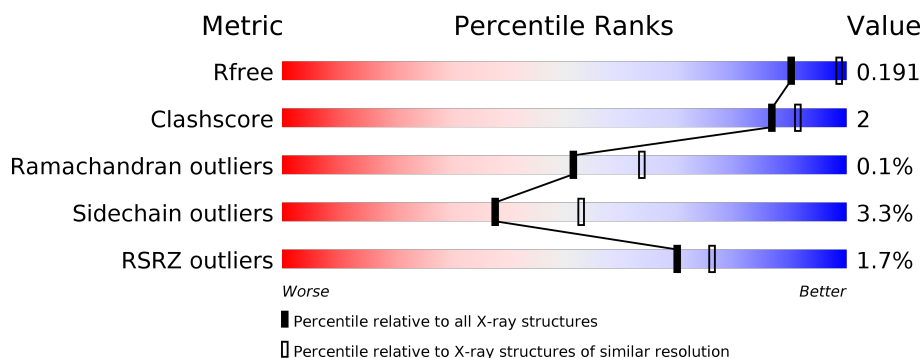
# 1 Overall quality at a glance

The following experimental techniques were used to determine the structure:

## *X-RAY DIFFRACTION*

The reported resolution of this entry is 2.30 Å.

Percentile scores (ranging between 0-100) for global validation metrics of the entry are shown in the following graphic. The table shows the number of entries on which the scores are based.



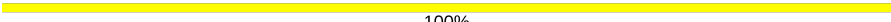

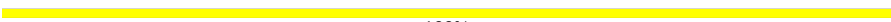
Metric	Whole archive (#Entries)	Similar resolution (#Entries, resolution range(Å))
$R_{free}$	130704	5042 (2.30-2.30)
Clashscore	141614	5643 (2.30-2.30)
Ramachandran outliers	138981	5575 (2.30-2.30)
Sidechain outliers	138945	5575 (2.30-2.30)
RSRZ outliers	127900	4938 (2.30-2.30)

The table below summarises the geometric issues observed across the polymeric chains and their fit to the electron density. The red, orange, yellow and green segments on the lower bar indicate the fraction of residues that contain outliers for  $\geq 3$ , 2, 1 and 0 types of geometric quality criteria respectively. A grey segment represents the fraction of residues that are not modelled. The numeric value for each fraction is indicated below the corresponding segment, with a dot representing fractions  $\leq 5\%$ . The upper red bar (where present) indicates the fraction of residues that have poor fit to the electron density. The numeric value is given above the bar.

Mol	Chain	Length	Quality of chain
1	A	793	<div> <div>2%</div> <div> <div></div> <div>87%</div> <div>8%</div> <div>5%</div> </div> </div>
2	B	7	<div> <div>71%</div> <div>29%</div> </div>
2	E	7	<div> <div>43%</div> <div>57%</div> </div>
2	G	7	<div> <div>100%</div> </div>
3	C	4	<div> <div>25%</div> <div>75%</div> </div>
3	F	4	<div> <div>100%</div> </div>

*Continued on next page...*

*Continued from previous page...*

Mol	Chain	Length	Quality of chain
3	H	4	 100%
4	D	3	 100%
4	I	3	 100%

The following table lists non-polymeric compounds, carbohydrate monomers and non-standard residues in protein, DNA, RNA chains that are outliers for geometric or electron-density-fit criteria:

Mol	Type	Chain	Res	Chirality	Geometry	Clashes	Electron density
5	GOL	A	840	-	X	-	-

## 2 Entry composition

There are 7 unique types of molecules in this entry. The entry contains 7245 atoms, of which 0 are hydrogens and 0 are deuteriums.

In the tables below, the ZeroOcc column contains the number of atoms modelled with zero occupancy, the AltConf column contains the number of residues with at least one atom in alternate conformation and the Trace column contains the number of residues modelled with at most 2 atoms.

- Molecule 1 is a protein called 1,4-alpha-glucan branching enzyme GlgB.

Mol	Chain	Residues	Atoms					ZeroOcc	AltConf	Trace
1	A	755	Total	C	N	O	S	0	0	0
			6267	4050	1042	1151	24			

There are 21 discrepancies between the modelled and reference sequences:

Chain	Residue	Modelled	Actual	Comment	Reference
A	-19	MET	-	initiating methionine	UNP B1WPM8
A	-18	GLY	-	expression tag	UNP B1WPM8
A	-17	SER	-	expression tag	UNP B1WPM8
A	-16	SER	-	expression tag	UNP B1WPM8
A	-15	HIS	-	expression tag	UNP B1WPM8
A	-14	HIS	-	expression tag	UNP B1WPM8
A	-13	HIS	-	expression tag	UNP B1WPM8
A	-12	HIS	-	expression tag	UNP B1WPM8
A	-11	HIS	-	expression tag	UNP B1WPM8
A	-10	HIS	-	expression tag	UNP B1WPM8
A	-9	SER	-	expression tag	UNP B1WPM8
A	-8	SER	-	expression tag	UNP B1WPM8
A	-7	GLY	-	expression tag	UNP B1WPM8
A	-6	LEU	-	expression tag	UNP B1WPM8
A	-5	VAL	-	expression tag	UNP B1WPM8
A	-4	PRO	-	expression tag	UNP B1WPM8
A	-3	ARG	-	expression tag	UNP B1WPM8
A	-2	GLY	-	expression tag	UNP B1WPM8
A	-1	SER	-	expression tag	UNP B1WPM8
A	0	HIS	-	expression tag	UNP B1WPM8
A	610	ASN	TRP	engineered mutation	UNP B1WPM8

- Molecule 2 is an oligosaccharide called alpha-D-glucopyranose-(1-4)-alpha-D-glucopyranose-(1-4)-alpha-D-glucopyranose-(1-4)-alpha-D-glucopyranose-(1-4)-alpha-D-glucopyranose-(1-4)-alpha-D-glucopyranose.



Mol	Chain	Residues	Atoms			ZeroOcc	AltConf	Trace
2	B	7	Total	C	O	0	0	0
			77	42	35			
2	E	7	Total	C	O	0	0	0
			77	42	35			
2	G	7	Total	C	O	0	0	0
			78	42	36			

- Molecule 3 is an oligosaccharide called alpha-D-glucopyranose-(1-4)-alpha-D-glucopyranose-(1-4)-alpha-D-glucopyranose-(1-4)-alpha-D-glucopyranose.



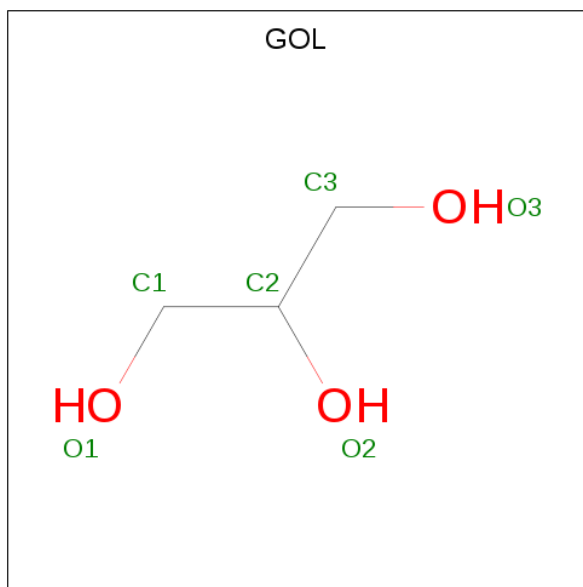
Mol	Chain	Residues	Atoms			ZeroOcc	AltConf	Trace
3	C	4	Total	C	O	0	0	0
			45	24	21			
3	F	4	Total	C	O	0	0	0
			45	24	21			
3	H	4	Total	C	O	0	0	0
			45	24	21			

- Molecule 4 is an oligosaccharide called alpha-D-glucopyranose-(1-4)-alpha-D-glucopyranose-(1-4)-alpha-D-glucopyranose.



Mol	Chain	Residues	Atoms			ZeroOcc	AltConf	Trace
4	D	3	Total	C	O	0	0	0
			34	18	16			
4	I	3	Total	C	O	0	0	0
			34	18	16			

- Molecule 5 is GLYCEROL (three-letter code: GOL) (formula: C<sub>3</sub>H<sub>8</sub>O<sub>3</sub>).



Mol	Chain	Residues	Atoms			ZeroOcc	AltConf
5	A	1	Total	C	O	0	0
			6	3	3		
5	A	1	Total	C	O	0	0
			6	3	3		

- Molecule 6 is MAGNESIUM ION (three-letter code: MG) (formula: Mg).

Mol	Chain	Residues	Atoms		ZeroOcc	AltConf
6	A	1	Total	Mg	0	0
			1	1		

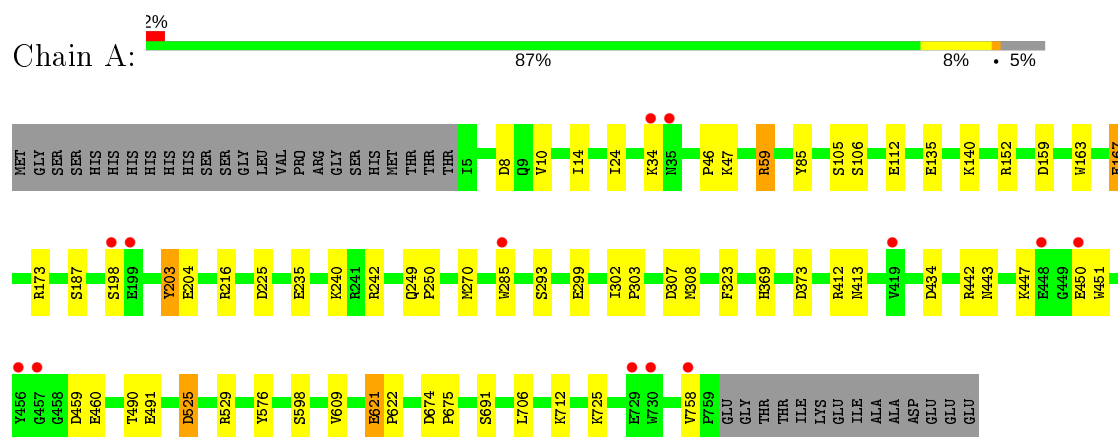
- Molecule 7 is water.

Mol	Chain	Residues	Atoms		ZeroOcc	AltConf
7	A	530	Total	O	0	0
			530	530		

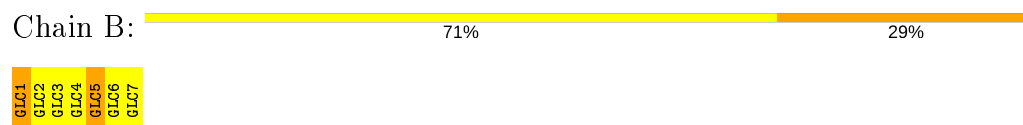
### 3 Residue-property plots [i](#)

These plots are drawn for all protein, RNA, DNA and oligosaccharide chains in the entry. The first graphic for a chain summarises the proportions of the various outlier classes displayed in the second graphic. The second graphic shows the sequence view annotated by issues in geometry and electron density. Residues are color-coded according to the number of geometric quality criteria for which they contain at least one outlier: green = 0, yellow = 1, orange = 2 and red = 3 or more. A red dot above a residue indicates a poor fit to the electron density ( $RSRZ > 2$ ). Stretches of 2 or more consecutive residues without any outlier are shown as a green connector. Residues present in the sample, but not in the model, are shown in grey.

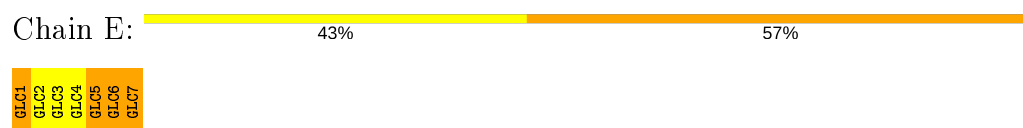
- Molecule 1: 1,4-alpha-glucan branching enzyme GlgB



- Molecule 2: alpha-D-glucopyranose-(1-4)-alpha-D-glucopyranose-(1-4)-alpha-D-glucopyranose-(1-4)-alpha-D-glucopyranose-(1-4)-alpha-D-glucopyranose



- Molecule 2: alpha-D-glucopyranose-(1-4)-alpha-D-glucopyranose-(1-4)-alpha-D-glucopyranose-(1-4)-alpha-D-glucopyranose-(1-4)-alpha-D-glucopyranose



- Molecule 2: alpha-D-glucopyranose-(1-4)-alpha-D-glucopyranose-(1-4)-alpha-D-glucopyranose-(1-4)-alpha-D-glucopyranose-(1-4)-alpha-D-glucopyranose



GLC1  
GLC2  
GLC3  
GLC4  
GLC5  
GLC6  
GLC7

- Molecule 3: alpha-D-glucopyranose-(1-4)-alpha-D-glucopyranose-(1-4)-alpha-D-glucopyranose-(1-4)-alpha-D-glucopyranose

Chain C:  25% 75%

GLC1  
GLC2  
GLC3  
GLC4

- Molecule 3: alpha-D-glucopyranose-(1-4)-alpha-D-glucopyranose-(1-4)-alpha-D-glucopyranose-(1-4)-alpha-D-glucopyranose

Chain F:  100%

GLC1  
GLC2  
GLC3  
GLC4

- Molecule 3: alpha-D-glucopyranose-(1-4)-alpha-D-glucopyranose-(1-4)-alpha-D-glucopyranose-(1-4)-alpha-D-glucopyranose

Chain H:  100%

GLC1  
GLC2  
GLC3  
GLC4

- Molecule 4: alpha-D-glucopyranose-(1-4)-alpha-D-glucopyranose-(1-4)-alpha-D-glucopyranose

Chain D:  100%

GLC1  
GLC2  
GLC3

- Molecule 4: alpha-D-glucopyranose-(1-4)-alpha-D-glucopyranose-(1-4)-alpha-D-glucopyranose

Chain I:  100%

GLC1  
GLC2  
GLC3

## 4 Data and refinement statistics

Property	Value	Source
Space group	P 41 21 2	Depositor
Cell constants a, b, c, $\alpha$ , $\beta$ , $\gamma$	134.03Å 134.03Å 185.06Å 90.00° 90.00° 90.00°	Depositor
Resolution (Å)	47.38 – 2.30 37.58 – 2.30	Depositor EDS
% Data completeness (in resolution range)	99.9 (47.38-2.30) 99.9 (37.58-2.30)	Depositor EDS
$R_{merge}$	0.07	Depositor
$R_{sym}$	(Not available)	Depositor
$\langle I/\sigma(I) \rangle$ <sup>1</sup>	14.37 (at 2.29Å)	Xtriage
Refinement program	REFMAC 5.8.0049	Depositor
R, $R_{free}$	0.149 , 0.184 0.161 , 0.191	Depositor DCC
$R_{free}$ test set	3785 reflections (5.04%)	wwPDB-VP
Wilson B-factor (Å <sup>2</sup> )	24.4	Xtriage
Anisotropy	0.031	Xtriage
Bulk solvent $k_{sol}$ (e/Å <sup>3</sup> ), $B_{sol}$ (Å <sup>2</sup> )	0.39 , 44.4	EDS
L-test for twinning <sup>2</sup>	$\langle  L  \rangle = 0.51$ , $\langle L^2 \rangle = 0.34$	Xtriage
Estimated twinning fraction	No twinning to report.	Xtriage
$F_o, F_c$ correlation	0.96	EDS
Total number of atoms	7245	wwPDB-VP
Average B, all atoms (Å <sup>2</sup> )	26.0	wwPDB-VP

Xtriage's analysis on translational NCS is as follows: *The largest off-origin peak in the Patterson function is 2.96% of the height of the origin peak. No significant pseudotranslation is detected.*

<sup>1</sup>Intensities estimated from amplitudes.

<sup>2</sup>Theoretical values of  $\langle |L| \rangle$ ,  $\langle L^2 \rangle$  for acentric reflections are 0.5, 0.333 respectively for untwinned datasets, and 0.375, 0.2 for perfectly twinned datasets.

## 5 Model quality

### 5.1 Standard geometry

Bond lengths and bond angles in the following residue types are not validated in this section: GOL, MG, GLC

The Z score for a bond length (or angle) is the number of standard deviations the observed value is removed from the expected value. A bond length (or angle) with  $|Z| > 5$  is considered an outlier worth inspection. RMSZ is the root-mean-square of all Z scores of the bond lengths (or angles).

Mol	Chain	Bond lengths		Bond angles	
		RMSZ	$\# Z  > 5$	RMSZ	$\# Z  > 5$
1	A	1.12	15/6485 (0.2%)	0.99	15/8824 (0.2%)

All (15) bond length outliers are listed below:

Mol	Chain	Res	Type	Atoms	Z	Observed(Å)	Ideal(Å)
1	A	203	TYR	CE1-CZ	9.18	1.50	1.38
1	A	525	ASP	CB-CG	-7.13	1.36	1.51
1	A	187	SER	CB-OG	-6.75	1.33	1.42
1	A	460	GLU	CD-OE1	6.20	1.32	1.25
1	A	135	GLU	CD-OE2	6.12	1.32	1.25
1	A	159	ASP	CB-CG	5.85	1.64	1.51
1	A	299	GLU	CD-OE2	5.68	1.31	1.25
1	A	8	ASP	CB-CG	5.64	1.63	1.51
1	A	112	GLU	CG-CD	5.42	1.60	1.51
1	A	203	TYR	CG-CD1	5.34	1.46	1.39
1	A	621	GLU	CD-OE1	-5.32	1.19	1.25
1	A	285	TRP	CB-CG	-5.12	1.41	1.50
1	A	235	GLU	CG-CD	5.05	1.59	1.51
1	A	85	TYR	CG-CD2	-5.04	1.32	1.39
1	A	412	ARG	CZ-NH1	5.01	1.39	1.33

All (15) bond angle outliers are listed below:

Mol	Chain	Res	Type	Atoms	Z	Observed(°)	Ideal(°)
1	A	525	ASP	CB-CG-OD1	-7.37	111.66	118.30
1	A	412	ARG	NE-CZ-NH2	-7.29	116.66	120.30
1	A	242	ARG	NE-CZ-NH2	7.03	123.81	120.30
1	A	59	ARG	NE-CZ-NH2	-6.89	116.85	120.30
1	A	203	TYR	CB-CA-C	-6.70	96.99	110.40
1	A	308	MET	CG-SD-CE	6.58	110.72	100.20

*Continued on next page...*

*Continued from previous page...*

Mol	Chain	Res	Type	Atoms	Z	Observed(°)	Ideal(°)
1	A	459	ASP	CB-CG-OD1	6.30	123.97	118.30
1	A	525	ASP	OD1-CG-OD2	6.18	135.03	123.30
1	A	173	ARG	NE-CZ-NH1	6.09	123.34	120.30
1	A	167	GLU	OE1-CD-OE2	6.06	130.57	123.30
1	A	525	ASP	CB-CG-OD2	-5.65	113.22	118.30
1	A	242	ARG	NE-CZ-NH1	-5.63	117.48	120.30
1	A	225	ASP	CB-CG-OD2	-5.40	113.44	118.30
1	A	442	ARG	NE-CZ-NH2	-5.34	117.63	120.30
1	A	529	ARG	NE-CZ-NH2	-5.23	117.69	120.30

There are no chirality outliers.

There are no planarity outliers.

## 5.2 Too-close contacts ⓘ

In the following table, the Non-H and H(model) columns list the number of non-hydrogen atoms and hydrogen atoms in the chain respectively. The H(added) column lists the number of hydrogen atoms added and optimized by MolProbity. The Clashes column lists the number of clashes within the asymmetric unit, whereas Symm-Clashes lists symmetry related clashes.

Mol	Chain	Non-H	H(model)	H(added)	Clashes	Symm-Clashes
1	A	6267	0	5853	20	0
2	B	77	0	64	3	0
2	E	77	0	64	7	0
2	G	78	0	66	0	0
3	C	45	0	39	0	0
3	F	45	0	39	0	0
3	H	45	0	39	0	0
4	D	34	0	30	2	0
4	I	34	0	30	0	0
5	A	12	0	16	1	0
6	A	1	0	0	0	0
7	A	530	0	0	1	0
All	All	7245	0	6240	27	0

The all-atom clashscore is defined as the number of clashes found per 1000 atoms (including hydrogen atoms). The all-atom clashscore for this structure is 2.

All (27) close contacts within the same asymmetric unit are listed below, sorted by their clash magnitude.

Atom-1	Atom-2	Interatomic distance (Å)	Clash overlap (Å)
1:A:490:THR:O	1:A:491:GLU:HB2	1.95	0.65
1:A:249:GLN:HB3	1:A:250:PRO:HD2	1.78	0.64
2:E:6:GLC:H62	2:E:7:GLC:C5	2.34	0.58
2:E:1:GLC:O5	2:E:7:GLC:O4	2.23	0.57
1:A:490:THR:O	1:A:491:GLU:CB	2.50	0.56
1:A:46:PRO:O	1:A:47:LYS:HB2	2.08	0.53
1:A:270:MET:HG3	1:A:293:SER:HB3	1.91	0.52
1:A:59:ARG:HD3	2:E:5:GLC:O6	2.10	0.52
2:E:6:GLC:H62	2:E:7:GLC:C6	2.40	0.52
1:A:59:ARG:HD2	2:E:5:GLC:O5	2.12	0.50
2:E:6:GLC:H62	2:E:7:GLC:H61	1.94	0.50
1:A:621:GLU:HB3	1:A:622:PRO:HD3	1.94	0.49
7:A:1155:HOH:O	2:B:1:GLC:H62	2.12	0.48
1:A:576:TYR:CG	5:A:840:GOL:H12	2.49	0.48
1:A:270:MET:CG	1:A:293:SER:HB3	2.46	0.45
2:E:6:GLC:H62	2:E:7:GLC:H5	1.98	0.45
1:A:674:ASP:HA	1:A:675:PRO:HD3	1.89	0.44
1:A:609:VAL:O	1:A:609:VAL:HG22	2.17	0.44
1:A:10:VAL:O	1:A:14:ILE:HG12	2.19	0.43
1:A:434:ASP:OD1	2:B:1:GLC:O5	2.37	0.43
1:A:152:ARG:HG3	1:A:198:SER:HA	2.00	0.42
1:A:323:PHE:HB2	2:B:5:GLC:H3	2.02	0.42
1:A:302:ILE:HB	1:A:303:PRO:HD3	2.02	0.42
4:D:2:GLC:H61	4:D:3:GLC:H5	2.02	0.42
1:A:443:ASN:HB3	1:A:451:TRP:CD2	2.55	0.41
1:A:46:PRO:O	1:A:47:LYS:CB	2.68	0.41
1:A:163:TRP:CG	4:D:1:GLC:H61	2.55	0.41

There are no symmetry-related clashes.

## 5.3 Torsion angles [i](#)

### 5.3.1 Protein backbone [i](#)

In the following table, the Percentiles column shows the percent Ramachandran outliers of the chain as a percentile score with respect to all X-ray entries followed by that with respect to entries of similar resolution.

The Analysed column shows the number of residues for which the backbone conformation was analysed, and the total number of residues.

Mol	Chain	Analysed	Favoured	Allowed	Outliers	Percentiles
1	A	753/793 (95%)	732 (97%)	20 (3%)	1 (0%)	51 64

All (1) Ramachandran outliers are listed below:

Mol	Chain	Res	Type
1	A	598	SER

### 5.3.2 Protein sidechains ⓘ

In the following table, the Percentiles column shows the percent sidechain outliers of the chain as a percentile score with respect to all X-ray entries followed by that with respect to entries of similar resolution.

The Analysed column shows the number of residues for which the sidechain conformation was analysed, and the total number of residues.

Mol	Chain	Analysed	Rotameric	Outliers	Percentiles
1	A	668/700 (95%)	646 (97%)	22 (3%)	38 53

All (22) residues with a non-rotameric sidechain are listed below:

Mol	Chain	Res	Type
1	A	24	ILE
1	A	34	LYS
1	A	105	SER
1	A	106	SER
1	A	140	LYS
1	A	167	GLU
1	A	203	TYR
1	A	204	GLU
1	A	216	ARG
1	A	240	LYS
1	A	307	ASP
1	A	369	HIS
1	A	373	ASP
1	A	413	ASN
1	A	447	LYS
1	A	450	GLU
1	A	525	ASP
1	A	691	SER
1	A	706	LEU
1	A	712	LYS

*Continued on next page...*

*Continued from previous page...*

Mol	Chain	Res	Type
1	A	725	LYS
1	A	758	VAL

Some sidechains can be flipped to improve hydrogen bonding and reduce clashes. All (5) such sidechains are listed below:

Mol	Chain	Res	Type
1	A	16	ASN
1	A	35	ASN
1	A	65	ASN
1	A	619	GLN
1	A	634	ASN

### 5.3.3 RNA ⓘ

There are no RNA molecules in this entry.

## 5.4 Non-standard residues in protein, DNA, RNA chains ⓘ

There are no non-standard protein/DNA/RNA residues in this entry.

## 5.5 Carbohydrates ⓘ

39 monosaccharides are modelled in this entry.

In the following table, the Counts columns list the number of bonds (or angles) for which Mogul statistics could be retrieved, the number of bonds (or angles) that are observed in the model and the number of bonds (or angles) that are defined in the Chemical Component Dictionary. The Link column lists molecule types, if any, to which the group is linked. The Z score for a bond length (or angle) is the number of standard deviations the observed value is removed from the expected value. A bond length (or angle) with  $|Z| > 2$  is considered an outlier worth inspection. RMSZ is the root-mean-square of all Z scores of the bond lengths (or angles).

Mol	Type	Chain	Res	Link	Bond lengths			Bond angles		
					Counts	RMSZ	# $ Z  > 2$	Counts	RMSZ	# $ Z  > 2$
2	GLC	B	1	2	11,11,12	1.27	2 (18%)	15,15,17	2.89	7 (46%)
2	GLC	B	2	2	11,11,12	0.99	1 (9%)	15,15,17	2.28	3 (20%)
2	GLC	B	3	2	11,11,12	1.09	1 (9%)	15,15,17	1.85	4 (26%)
2	GLC	B	4	2	11,11,12	1.07	0	15,15,17	1.75	5 (33%)
2	GLC	B	5	2	11,11,12	1.23	1 (9%)	15,15,17	2.73	7 (46%)

Mol	Type	Chain	Res	Link	Bond lengths			Bond angles		
					Counts	RMSZ	# Z  > 2	Counts	RMSZ	# Z  > 2
2	GLC	B	6	2	11,11,12	1.25	0	15,15,17	1.95	4 (26%)
2	GLC	B	7	2	11,11,12	2.38	5 (45%)	15,15,17	2.56	7 (46%)
3	GLC	C	1	3	12,12,12	0.81	0	17,17,17	0.97	0
3	GLC	C	2	3	11,11,12	1.31	2 (18%)	15,15,17	2.37	4 (26%)
3	GLC	C	3	3	11,11,12	1.37	1 (9%)	15,15,17	2.56	4 (26%)
3	GLC	C	4	3	11,11,12	0.83	0	15,15,17	2.16	3 (20%)
4	GLC	D	1	4	12,12,12	1.10	1 (8%)	17,17,17	1.35	1 (5%)
4	GLC	D	2	4	11,11,12	1.11	1 (9%)	15,15,17	1.70	4 (26%)
4	GLC	D	3	4	11,11,12	0.92	0	15,15,17	2.14	7 (46%)
2	GLC	E	1	2	11,11,12	0.44	0	15,15,17	1.81	5 (33%)
2	GLC	E	2	2	11,11,12	1.38	1 (9%)	15,15,17	1.61	4 (26%)
2	GLC	E	3	2	11,11,12	0.91	0	15,15,17	1.47	2 (13%)
2	GLC	E	4	2	11,11,12	0.58	0	15,15,17	1.62	6 (40%)
2	GLC	E	5	2	11,11,12	0.76	0	15,15,17	1.34	2 (13%)
2	GLC	E	6	2	11,11,12	0.71	0	15,15,17	2.00	5 (33%)
2	GLC	E	7	2	11,11,12	0.84	0	15,15,17	1.86	4 (26%)
3	GLC	F	1	3	12,12,12	0.96	0	17,17,17	1.74	4 (23%)
3	GLC	F	2	3	11,11,12	0.90	0	15,15,17	1.83	5 (33%)
3	GLC	F	3	3	11,11,12	1.10	1 (9%)	15,15,17	1.72	2 (13%)
3	GLC	F	4	3	11,11,12	1.11	2 (18%)	15,15,17	2.27	6 (40%)
2	GLC	G	1	2	12,12,12	0.97	0	17,17,17	2.14	6 (35%)
2	GLC	G	2	2	11,11,12	0.84	0	15,15,17	1.56	4 (26%)
2	GLC	G	3	2	11,11,12	0.65	0	15,15,17	1.69	4 (26%)
2	GLC	G	4	2	11,11,12	1.16	1 (9%)	15,15,17	3.14	8 (53%)
2	GLC	G	5	2	11,11,12	1.09	1 (9%)	15,15,17	1.28	2 (13%)
2	GLC	G	6	2	11,11,12	0.68	0	15,15,17	1.62	3 (20%)
2	GLC	G	7	2	11,11,12	0.67	0	15,15,17	1.79	5 (33%)
3	GLC	H	1	3	12,12,12	0.89	0	17,17,17	2.22	7 (41%)
3	GLC	H	2	3	11,11,12	0.73	0	15,15,17	2.00	2 (13%)
3	GLC	H	3	3	11,11,12	1.15	1 (9%)	15,15,17	2.02	5 (33%)
3	GLC	H	4	3	11,11,12	0.94	0	15,15,17	1.89	2 (13%)
4	GLC	I	1	4	12,12,12	1.33	1 (8%)	17,17,17	2.22	7 (41%)
4	GLC	I	2	4	11,11,12	1.93	2 (18%)	15,15,17	2.73	9 (60%)
4	GLC	I	3	4	11,11,12	1.60	1 (9%)	15,15,17	2.00	5 (33%)

In the following table, the Chirals column lists the number of chiral outliers, the number of chiral centers analysed, the number of these observed in the model and the number defined in the Chemical Component Dictionary. Similar counts are reported in the Torsion and Rings columns. '-' means no outliers of that kind were identified.

Mol	Type	Chain	Res	Link	Chirals	Torsions	Rings
2	GLC	B	1	2	-	0/2/19/22	0/1/1/1
2	GLC	B	2	2	-	2/2/19/22	0/1/1/1
2	GLC	B	3	2	-	0/2/19/22	0/1/1/1
2	GLC	B	4	2	-	0/2/19/22	0/1/1/1
2	GLC	B	5	2	-	2/2/19/22	0/1/1/1
2	GLC	B	6	2	-	0/2/19/22	0/1/1/1
2	GLC	B	7	2	-	0/2/19/22	0/1/1/1
3	GLC	C	1	3	-	0/2/22/22	0/1/1/1
3	GLC	C	2	3	-	0/2/19/22	0/1/1/1
3	GLC	C	3	3	-	0/2/19/22	0/1/1/1
3	GLC	C	4	3	-	2/2/19/22	0/1/1/1
4	GLC	D	1	4	-	0/2/22/22	0/1/1/1
4	GLC	D	2	4	-	0/2/19/22	0/1/1/1
4	GLC	D	3	4	-	0/2/19/22	0/1/1/1
2	GLC	E	1	2	-	2/2/19/22	0/1/1/1
2	GLC	E	2	2	-	0/2/19/22	0/1/1/1
2	GLC	E	3	2	-	0/2/19/22	0/1/1/1
2	GLC	E	4	2	-	0/2/19/22	0/1/1/1
2	GLC	E	5	2	-	0/2/19/22	0/1/1/1
2	GLC	E	6	2	-	0/2/19/22	0/1/1/1
2	GLC	E	7	2	-	2/2/19/22	0/1/1/1
3	GLC	F	1	3	-	0/2/22/22	0/1/1/1
3	GLC	F	2	3	-	0/2/19/22	0/1/1/1
3	GLC	F	3	3	-	0/2/19/22	0/1/1/1
3	GLC	F	4	3	-	0/2/19/22	0/1/1/1
2	GLC	G	1	2	-	2/2/22/22	0/1/1/1
2	GLC	G	2	2	-	2/2/19/22	0/1/1/1
2	GLC	G	3	2	-	2/2/19/22	0/1/1/1
2	GLC	G	4	2	-	2/2/19/22	0/1/1/1
2	GLC	G	5	2	-	0/2/19/22	0/1/1/1
2	GLC	G	6	2	-	2/2/19/22	0/1/1/1
2	GLC	G	7	2	-	0/2/19/22	0/1/1/1
3	GLC	H	1	3	-	2/2/22/22	0/1/1/1
3	GLC	H	2	3	-	0/2/19/22	0/1/1/1
3	GLC	H	3	3	-	0/2/19/22	0/1/1/1
3	GLC	H	4	3	-	2/2/19/22	0/1/1/1

*Continued on next page...*

*Continued from previous page...*

Mol	Type	Chain	Res	Link	Chirals	Torsions	Rings
4	GLC	I	1	4	-	2/2/22/22	0/1/1/1
4	GLC	I	2	4	-	0/2/19/22	0/1/1/1
4	GLC	I	3	4	-	0/2/19/22	0/1/1/1

All (26) bond length outliers are listed below:

Mol	Chain	Res	Type	Atoms	Z	Observed(Å)	Ideal(Å)
2	B	7	GLC	C2-C3	5.08	1.60	1.52
4	I	2	GLC	C2-C3	4.41	1.59	1.52
4	I	3	GLC	C2-C3	4.40	1.59	1.52
4	I	2	GLC	O5-C1	-3.76	1.37	1.43
2	B	7	GLC	O3-C3	3.10	1.50	1.43
3	C	2	GLC	C1-C2	3.07	1.59	1.52
2	B	7	GLC	C4-C3	2.99	1.60	1.52
4	I	1	GLC	C4-C5	2.99	1.59	1.53
2	B	7	GLC	C1-C2	2.74	1.58	1.52
4	D	2	GLC	O5-C1	-2.71	1.39	1.43
3	C	3	GLC	C2-C3	2.67	1.56	1.52
2	B	1	GLC	C2-C3	2.67	1.56	1.52
3	F	3	GLC	O5-C1	-2.60	1.39	1.43
2	E	2	GLC	C4-C5	2.56	1.58	1.53
2	B	5	GLC	C4-C5	2.48	1.58	1.53
2	B	3	GLC	C2-C3	2.40	1.56	1.52
2	G	5	GLC	C2-C3	2.36	1.56	1.52
3	C	2	GLC	O2-C2	-2.26	1.38	1.43
3	F	4	GLC	O5-C5	2.25	1.48	1.43
2	B	1	GLC	C4-C3	2.23	1.58	1.52
2	B	7	GLC	O2-C2	2.21	1.48	1.43
2	G	4	GLC	O5-C1	-2.16	1.40	1.43
4	D	1	GLC	O5-C5	-2.06	1.39	1.44
3	F	4	GLC	C2-C3	2.05	1.55	1.52
3	H	3	GLC	O5-C1	-2.02	1.40	1.43
2	B	2	GLC	C1-C2	2.02	1.56	1.52

All (174) bond angle outliers are listed below:

Mol	Chain	Res	Type	Atoms	Z	Observed(°)	Ideal(°)
3	C	3	GLC	C1-O5-C5	7.69	122.61	112.19
2	G	4	GLC	C1-O5-C5	7.20	121.94	112.19
2	B	5	GLC	C1-O5-C5	7.15	121.88	112.19
3	C	2	GLC	C1-C2-C3	6.98	118.24	109.67
2	B	2	GLC	C1-O5-C5	6.86	121.49	112.19

*Continued on next page...*

*Continued from previous page...*

Mol	Chain	Res	Type	Atoms	Z	Observed(°)	Ideal(°)
2	B	1	GLC	C1-O5-C5	6.58	121.11	112.19
4	I	2	GLC	O3-C3-C2	6.51	122.46	109.99
3	C	4	GLC	C1-O5-C5	6.39	120.85	112.19
3	H	2	GLC	C1-C2-C3	6.26	117.36	109.67
2	B	7	GLC	O2-C2-C3	5.72	121.60	110.14
2	G	1	GLC	C1-O5-C5	5.66	124.35	113.66
2	B	1	GLC	O5-C1-C2	-5.53	102.24	110.77
2	G	4	GLC	O5-C5-C4	5.04	123.09	110.83
2	B	6	GLC	O5-C1-C2	-4.87	103.26	110.77
2	G	4	GLC	O6-C6-C5	-4.64	95.38	111.29
3	H	4	GLC	C1-O5-C5	-4.60	105.96	112.19
3	F	4	GLC	O5-C5-C6	4.48	114.23	107.20
2	B	1	GLC	O5-C5-C6	4.38	114.06	107.20
2	B	7	GLC	C6-C5-C4	4.36	123.22	113.00
2	E	3	GLC	O5-C5-C6	4.32	113.97	107.20
4	I	3	GLC	C1-C2-C3	4.28	114.93	109.67
3	F	3	GLC	C1-O5-C5	4.18	117.85	112.19
4	I	1	GLC	O1-C1-C2	4.14	120.69	109.03
2	E	6	GLC	O4-C4-C3	-4.11	100.84	110.35
3	F	2	GLC	C6-C5-C4	-4.08	103.44	113.00
3	F	1	GLC	C3-C4-C5	-4.05	103.01	110.24
4	I	1	GLC	C3-C4-C5	-4.03	103.04	110.24
3	H	1	GLC	O5-C5-C4	4.02	117.00	109.69
2	E	7	GLC	C1-O5-C5	4.02	117.63	112.19
3	H	1	GLC	O5-C1-C2	-3.99	103.17	110.28
2	B	3	GLC	C1-O5-C5	3.96	117.56	112.19
4	D	3	GLC	C1-C2-C3	-3.86	104.93	109.67
3	F	1	GLC	O6-C6-C5	-3.81	98.20	111.29
2	G	1	GLC	O5-C5-C4	3.75	116.50	109.69
2	E	5	GLC	O4-C4-C3	-3.73	101.73	110.35
2	E	1	GLC	O2-C2-C1	3.66	116.63	109.15
3	C	3	GLC	C3-C4-C5	3.65	116.76	110.24
2	B	5	GLC	C3-C4-C5	3.62	116.70	110.24
4	I	2	GLC	C1-O5-C5	3.60	117.08	112.19
4	D	2	GLC	C3-C4-C5	-3.58	103.86	110.24
3	H	3	GLC	O3-C3-C4	-3.57	102.09	110.35
3	F	4	GLC	C6-C5-C4	-3.54	104.72	113.00
2	B	5	GLC	O2-C2-C3	3.51	117.17	110.14
4	D	1	GLC	C1-O5-C5	3.48	120.22	113.66
2	B	1	GLC	O4-C4-C3	3.46	118.35	110.35
3	H	1	GLC	C1-O5-C5	3.46	120.19	113.66
2	G	7	GLC	C1-O5-C5	3.44	116.85	112.19

*Continued on next page...*

*Continued from previous page...*

Mol	Chain	Res	Type	Atoms	Z	Observed(°)	Ideal(°)
4	I	3	GLC	O5-C5-C6	3.41	112.55	107.20
2	B	2	GLC	O2-C2-C1	3.35	116.00	109.15
3	C	2	GLC	O3-C3-C2	3.34	116.39	109.99
2	G	4	GLC	O2-C2-C1	-3.33	102.33	109.15
4	I	1	GLC	C6-C5-C4	3.32	120.77	113.00
2	B	7	GLC	C1-C2-C3	3.32	113.74	109.67
2	B	4	GLC	C1-O5-C5	3.30	116.66	112.19
4	D	3	GLC	O2-C2-C3	3.28	116.71	110.14
2	G	3	GLC	C1-O5-C5	3.28	116.63	112.19
4	I	2	GLC	C1-C2-C3	3.27	113.69	109.67
2	E	4	GLC	C1-O5-C5	3.26	116.61	112.19
2	B	3	GLC	O3-C3-C2	3.24	116.20	109.99
3	H	4	GLC	O5-C5-C6	3.23	112.28	107.20
3	H	3	GLC	O5-C5-C6	3.23	112.27	107.20
4	I	2	GLC	C3-C4-C5	-3.23	104.47	110.24
3	H	1	GLC	O6-C6-C5	-3.21	100.29	111.29
4	I	3	GLC	O3-C3-C2	3.13	115.99	109.99
2	B	4	GLC	O3-C3-C2	3.10	115.94	109.99
2	G	7	GLC	O2-C2-C3	-3.07	103.99	110.14
2	E	1	GLC	O5-C1-C2	-3.05	106.06	110.77
2	G	6	GLC	C1-O5-C5	3.04	116.31	112.19
2	G	4	GLC	C1-C2-C3	3.02	113.38	109.67
2	B	7	GLC	O3-C3-C4	3.01	117.32	110.35
3	H	3	GLC	C2-C3-C4	-3.01	105.68	110.89
2	B	7	GLC	O3-C3-C2	2.98	115.71	109.99
2	B	5	GLC	O4-C4-C5	2.95	116.61	109.30
3	F	4	GLC	O3-C3-C2	2.94	115.62	109.99
3	C	4	GLC	O5-C5-C6	2.93	111.80	107.20
2	G	3	GLC	C3-C4-C5	-2.93	105.01	110.24
2	E	2	GLC	O6-C6-C5	-2.93	101.24	111.29
4	D	3	GLC	O5-C5-C6	2.91	111.77	107.20
3	H	3	GLC	O2-C2-C3	2.91	115.97	110.14
3	C	2	GLC	O2-C2-C1	2.89	115.07	109.15
4	I	1	GLC	O3-C3-C2	2.88	117.00	110.35
3	F	4	GLC	C1-O5-C5	2.87	116.07	112.19
4	D	3	GLC	C2-C3-C4	-2.85	105.96	110.89
2	E	7	GLC	C1-C2-C3	2.83	113.15	109.67
2	E	1	GLC	C3-C4-C5	-2.83	105.19	110.24
2	G	2	GLC	O5-C5-C6	2.82	111.63	107.20
2	B	3	GLC	O2-C2-C3	2.80	115.75	110.14
3	F	2	GLC	C1-O5-C5	-2.77	108.44	112.19
2	G	6	GLC	C6-C5-C4	-2.77	106.52	113.00

*Continued on next page...*

*Continued from previous page...*

Mol	Chain	Res	Type	Atoms	Z	Observed(°)	Ideal(°)
2	B	6	GLC	O3-C3-C4	2.76	116.74	110.35
2	G	4	GLC	O2-C2-C3	-2.76	104.62	110.14
4	D	3	GLC	O3-C3-C2	2.75	115.25	109.99
3	F	2	GLC	O2-C2-C1	2.74	114.76	109.15
2	E	2	GLC	O4-C4-C3	-2.71	104.08	110.35
2	G	1	GLC	O1-C1-C2	2.71	116.66	109.03
2	E	6	GLC	C3-C4-C5	-2.71	105.41	110.24
3	C	3	GLC	C2-C3-C4	-2.71	106.21	110.89
2	G	1	GLC	C1-C2-C3	2.70	115.91	110.31
4	I	1	GLC	O4-C4-C3	-2.69	104.14	110.35
4	I	2	GLC	O5-C5-C6	2.68	111.40	107.20
2	B	5	GLC	O5-C5-C6	-2.68	103.00	107.20
2	B	7	GLC	O5-C1-C2	2.66	114.87	110.77
2	G	3	GLC	O6-C6-C5	-2.65	102.21	111.29
3	C	3	GLC	O2-C2-C3	2.63	115.40	110.14
3	F	2	GLC	O6-C6-C5	-2.61	102.34	111.29
4	I	2	GLC	O5-C1-C2	-2.60	106.76	110.77
2	B	3	GLC	C1-C2-C3	-2.60	106.47	109.67
2	E	4	GLC	O4-C4-C3	-2.57	104.42	110.35
4	D	2	GLC	C1-C2-C3	-2.52	106.57	109.67
3	F	2	GLC	O3-C3-C4	-2.51	104.54	110.35
2	G	7	GLC	O3-C3-C2	-2.51	105.19	109.99
2	E	6	GLC	O2-C2-C3	-2.50	105.14	110.14
2	E	7	GLC	C6-C5-C4	2.49	118.83	113.00
3	F	4	GLC	O5-C5-C4	2.49	116.88	110.83
2	G	7	GLC	O5-C1-C2	-2.48	106.94	110.77
2	G	6	GLC	O5-C1-C2	-2.48	106.95	110.77
2	E	6	GLC	O3-C3-C2	2.47	114.72	109.99
3	F	4	GLC	O6-C6-C5	-2.44	102.90	111.29
2	G	4	GLC	O3-C3-C4	-2.44	104.70	110.35
2	B	4	GLC	O6-C6-C5	-2.43	102.96	111.29
4	D	3	GLC	C1-O5-C5	2.40	115.45	112.19
2	G	2	GLC	O5-C1-C2	-2.39	107.09	110.77
4	D	2	GLC	O6-C6-C5	-2.38	103.12	111.29
3	H	2	GLC	O4-C4-C3	-2.37	104.88	110.35
2	E	3	GLC	C6-C5-C4	-2.36	107.48	113.00
3	F	3	GLC	C6-C5-C4	-2.33	107.53	113.00
2	G	5	GLC	C3-C4-C5	-2.33	106.09	110.24
2	G	7	GLC	O5-C5-C6	2.28	110.78	107.20
2	B	1	GLC	C6-C5-C4	-2.28	107.67	113.00
4	I	3	GLC	O4-C4-C3	2.27	115.61	110.35
2	B	2	GLC	O5-C1-C2	-2.26	107.28	110.77

*Continued on next page...*

*Continued from previous page...*

Mol	Chain	Res	Type	Atoms	Z	Observed(°)	Ideal(°)
2	E	6	GLC	O4-C4-C5	2.26	114.90	109.30
2	E	7	GLC	C3-C4-C5	-2.26	106.21	110.24
3	H	3	GLC	C1-O5-C5	2.25	115.24	112.19
2	E	2	GLC	O3-C3-C4	2.25	115.54	110.35
2	B	4	GLC	O5-C5-C6	2.24	110.71	107.20
2	E	4	GLC	C1-C2-C3	-2.23	106.92	109.67
2	B	6	GLC	O4-C4-C5	-2.22	103.79	109.30
2	B	7	GLC	O5-C5-C6	-2.22	103.73	107.20
2	E	4	GLC	C6-C5-C4	2.21	118.19	113.00
2	G	5	GLC	O4-C4-C5	-2.21	103.81	109.30
2	G	2	GLC	C1-C2-C3	-2.20	106.96	109.67
3	F	1	GLC	O3-C3-C2	2.19	115.42	110.35
2	G	3	GLC	O4-C4-C3	-2.19	105.28	110.35
3	H	1	GLC	O2-C2-C3	2.17	115.38	110.35
4	I	1	GLC	O5-C1-C2	-2.17	106.42	110.28
2	G	1	GLC	O5-C5-C6	-2.16	101.08	106.44
2	B	5	GLC	O6-C6-C5	-2.14	103.97	111.29
2	B	5	GLC	O3-C3-C4	-2.14	105.41	110.35
4	I	3	GLC	O4-C4-C5	2.12	114.56	109.30
2	E	1	GLC	O5-C5-C6	2.11	110.51	107.20
4	D	3	GLC	O2-C2-C1	-2.10	104.86	109.15
2	B	4	GLC	C2-C3-C4	-2.10	107.27	110.89
2	B	1	GLC	O6-C6-C5	2.10	118.48	111.29
4	I	2	GLC	O2-C2-C1	-2.09	104.87	109.15
2	B	6	GLC	O4-C4-C3	2.09	115.18	110.35
3	C	2	GLC	O5-C1-C2	-2.09	107.55	110.77
3	H	1	GLC	C6-C5-C4	-2.08	108.12	113.00
4	I	2	GLC	O4-C4-C3	-2.08	105.53	110.35
2	E	4	GLC	O4-C4-C5	2.08	114.45	109.30
4	I	2	GLC	O2-C2-C3	2.06	114.27	110.14
2	G	4	GLC	C6-C5-C4	-2.06	108.19	113.00
2	B	1	GLC	C2-C3-C4	2.04	114.43	110.89
2	E	1	GLC	C2-C3-C4	-2.04	107.36	110.89
3	F	1	GLC	C1-C2-C3	2.04	114.55	110.31
4	D	2	GLC	O5-C5-C4	-2.04	105.86	110.83
2	E	2	GLC	C1-O5-C5	2.03	114.94	112.19
4	I	1	GLC	C4-C3-C2	2.03	114.37	110.82
3	C	4	GLC	O4-C4-C3	2.02	115.03	110.35
3	H	1	GLC	O5-C5-C6	-2.02	101.41	106.44
2	E	5	GLC	C1-O5-C5	2.01	114.92	112.19
2	G	1	GLC	O5-C1-C2	2.01	113.88	110.28
2	G	2	GLC	O4-C4-C3	-2.01	105.70	110.35

*Continued on next page...*

*Continued from previous page...*

Mol	Chain	Res	Type	Atoms	Z	Observed(°)	Ideal(°)
2	E	4	GLC	O5-C5-C4	-2.00	105.95	110.83

There are no chirality outliers.

All (26) torsion outliers are listed below:

Mol	Chain	Res	Type	Atoms
2	E	7	GLC	C4-C5-C6-O6
3	C	4	GLC	O5-C5-C6-O6
4	I	1	GLC	C4-C5-C6-O6
2	G	3	GLC	O5-C5-C6-O6
2	E	7	GLC	O5-C5-C6-O6
3	C	4	GLC	C4-C5-C6-O6
2	G	3	GLC	C4-C5-C6-O6
2	G	4	GLC	C4-C5-C6-O6
3	H	1	GLC	O5-C5-C6-O6
4	I	1	GLC	O5-C5-C6-O6
2	B	5	GLC	O5-C5-C6-O6
2	B	2	GLC	C4-C5-C6-O6
2	G	2	GLC	C4-C5-C6-O6
2	B	5	GLC	C4-C5-C6-O6
3	H	1	GLC	C4-C5-C6-O6
2	G	1	GLC	C4-C5-C6-O6
2	B	2	GLC	O5-C5-C6-O6
2	E	1	GLC	C4-C5-C6-O6
2	E	1	GLC	O5-C5-C6-O6
2	G	1	GLC	O5-C5-C6-O6
3	H	4	GLC	O5-C5-C6-O6
2	G	4	GLC	O5-C5-C6-O6
3	H	4	GLC	C4-C5-C6-O6
2	G	6	GLC	C4-C5-C6-O6
2	G	6	GLC	O5-C5-C6-O6
2	G	2	GLC	O5-C5-C6-O6

There are no ring outliers.

9 monomers are involved in 12 short contacts:

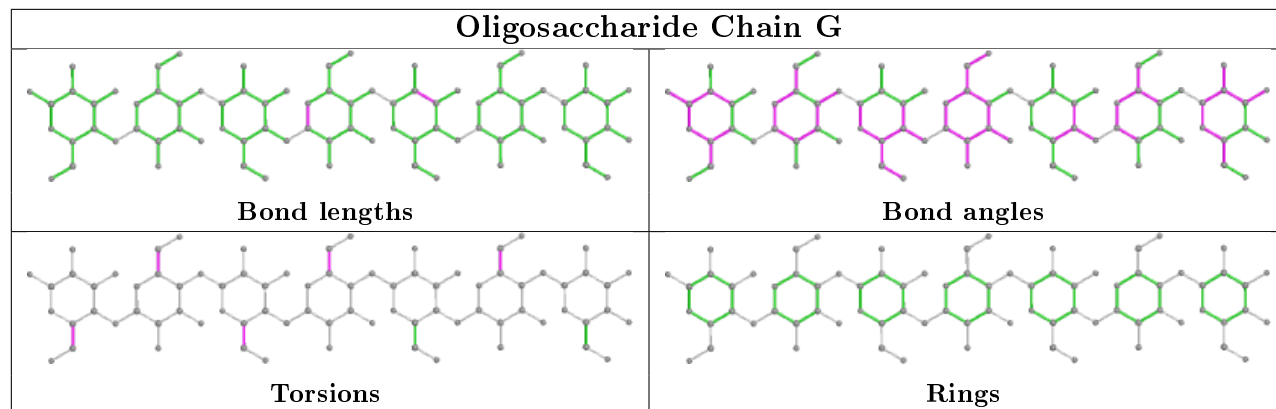
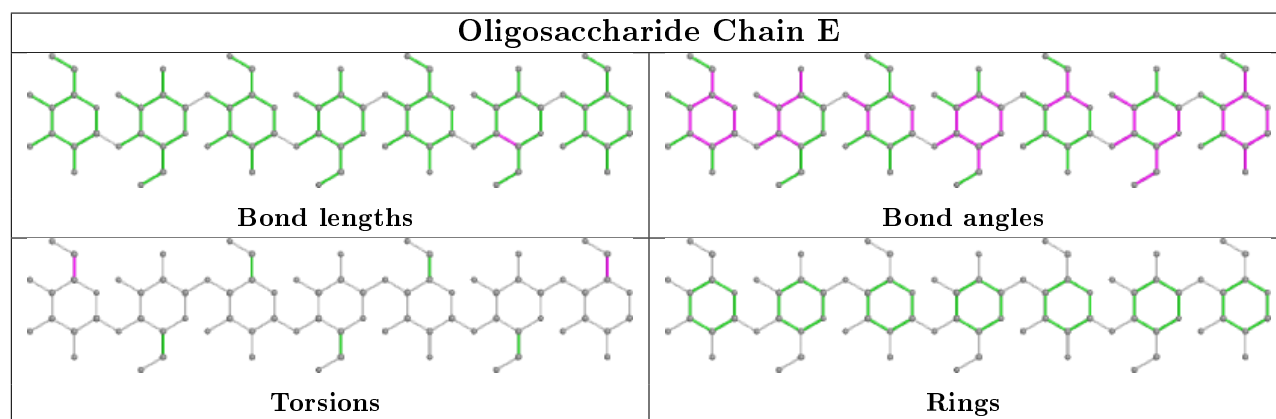
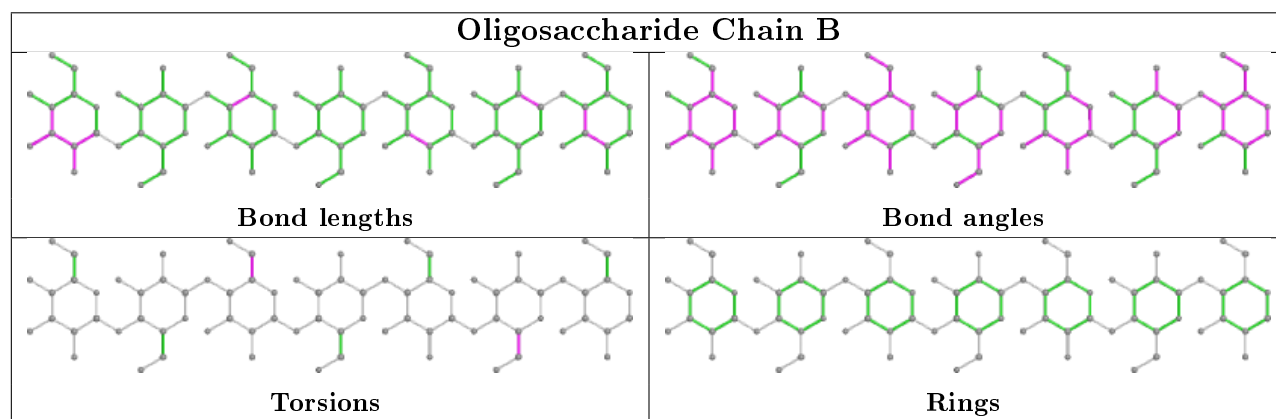
Mol	Chain	Res	Type	Clashes	Symm-Clashes
2	E	5	GLC	2	0
2	E	7	GLC	5	0
4	D	2	GLC	1	0
2	B	1	GLC	2	0

*Continued on next page...*

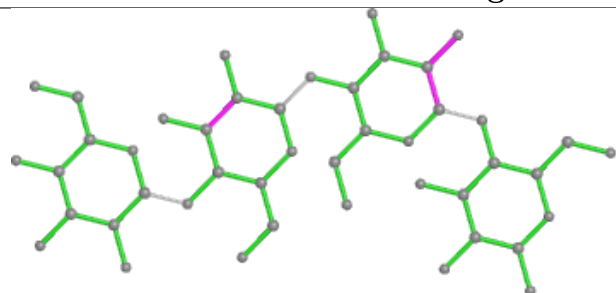
Continued from previous page...

Mol	Chain	Res	Type	Clashes	Symm-Clashes
2	E	1	GLC	1	0
4	D	3	GLC	1	0
2	B	5	GLC	1	0
2	E	6	GLC	4	0
4	D	1	GLC	1	0

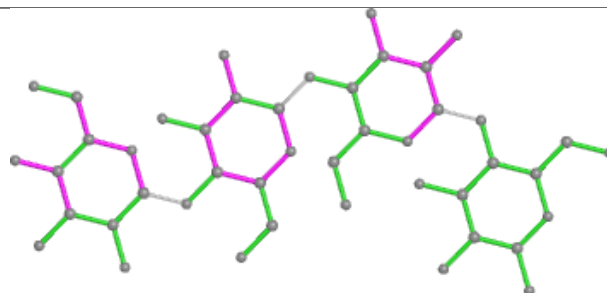
The following is a two-dimensional graphical depiction of Mogul quality analysis of bond lengths, bond angles, torsion angles, and ring geometry for oligosaccharide.



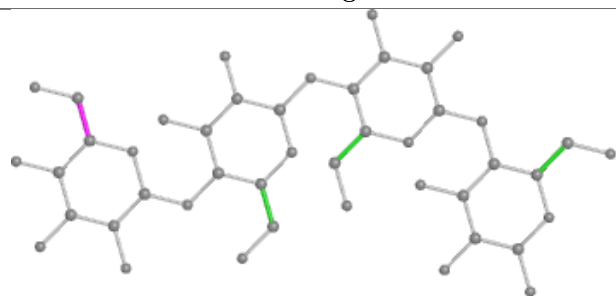
## Oligosaccharide Chain C



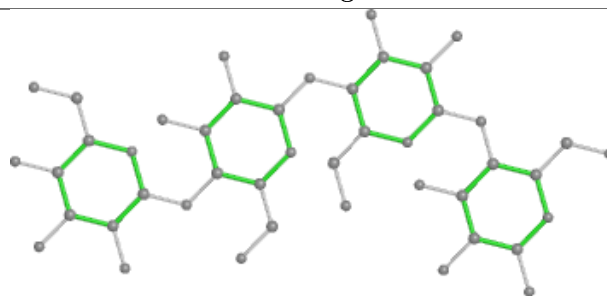
Bond lengths



Bond angles

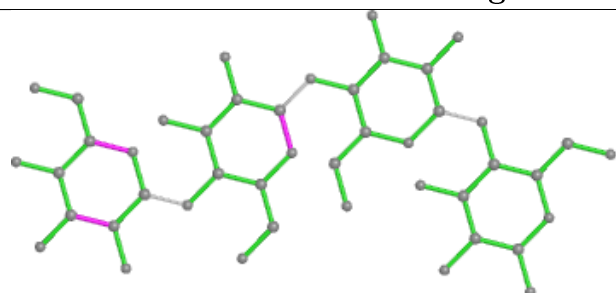


Torsions

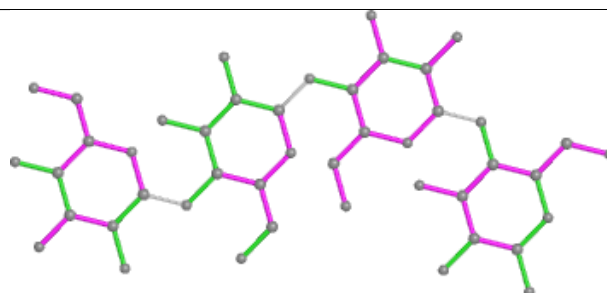


Rings

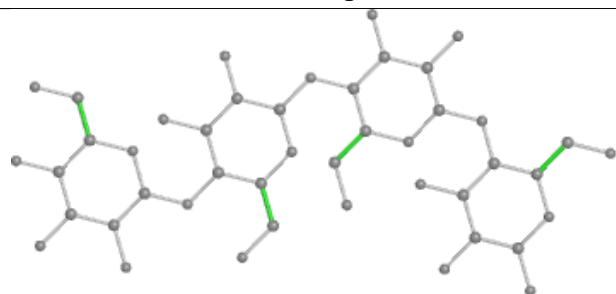
## Oligosaccharide Chain F



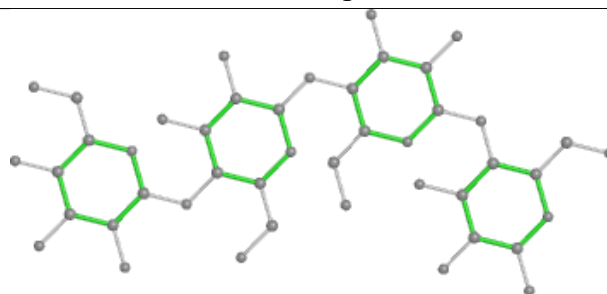
Bond lengths



Bond angles

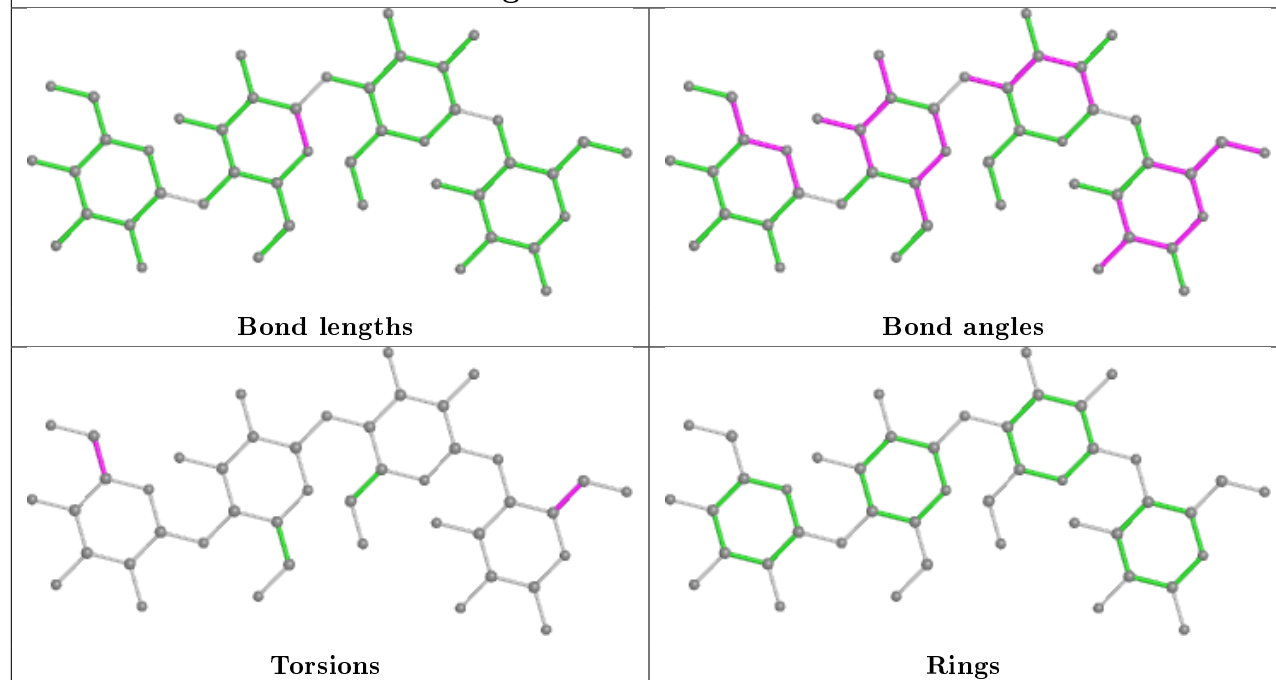


Torsions

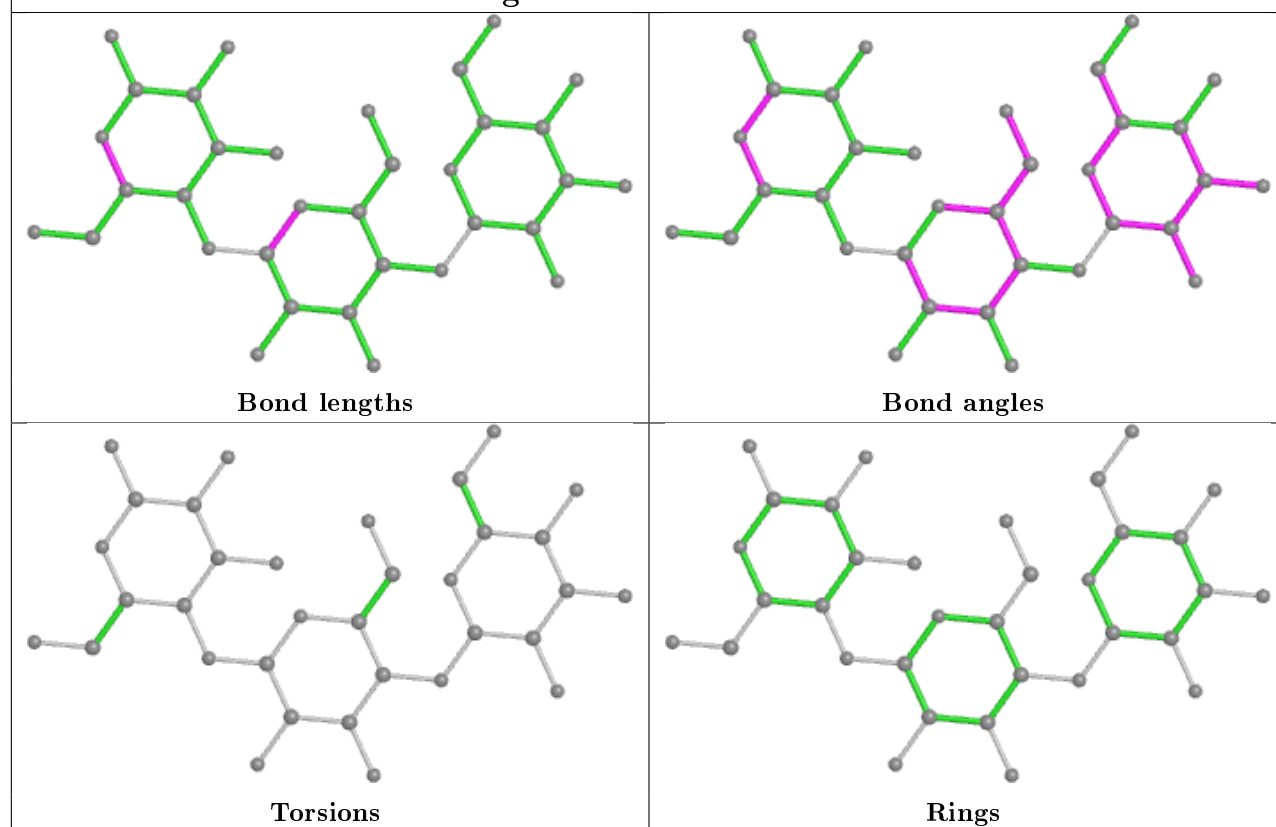


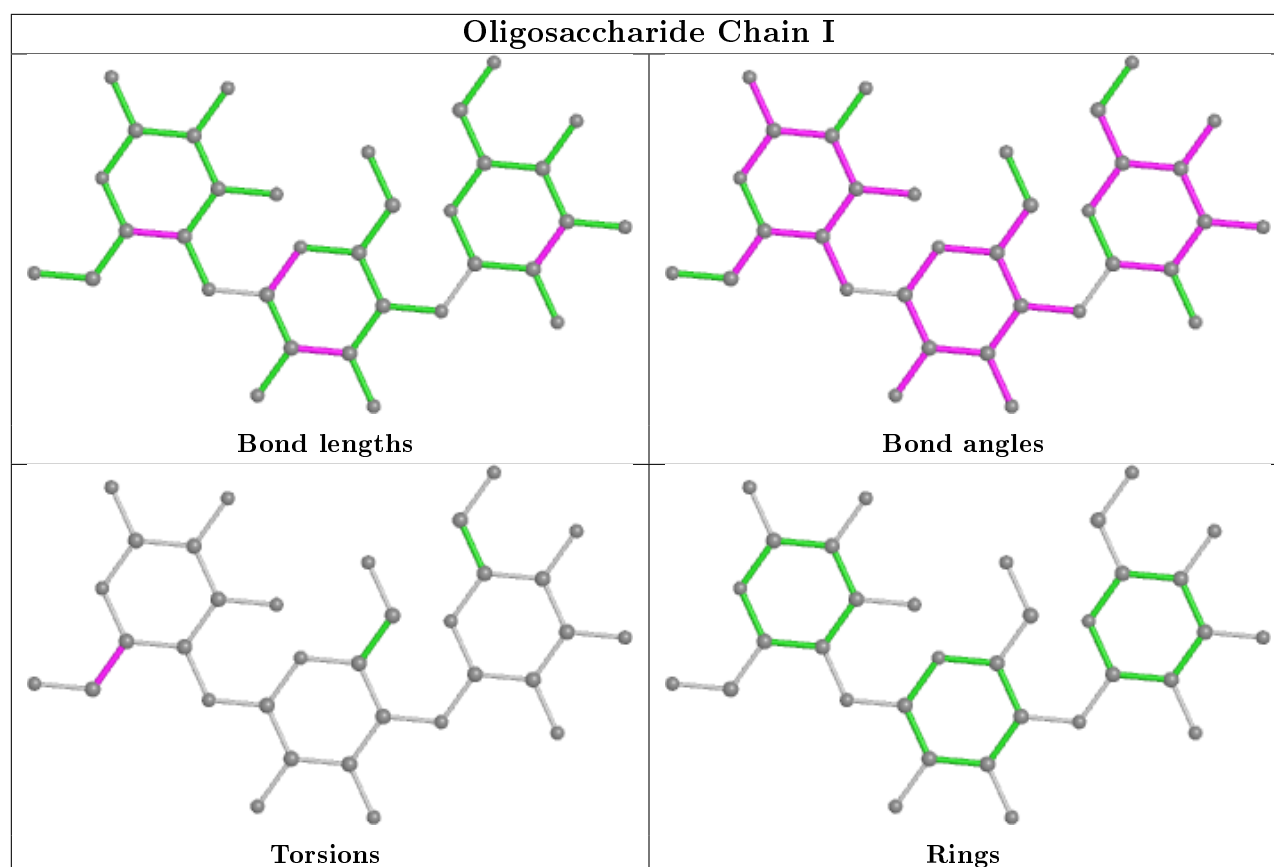
Rings

## Oligosaccharide Chain H



## Oligosaccharide Chain D





## 5.6 Ligand geometry [i](#)

Of 3 ligands modelled in this entry, 1 is monoatomic - leaving 2 for Mogul analysis.

In the following table, the Counts columns list the number of bonds (or angles) for which Mogul statistics could be retrieved, the number of bonds (or angles) that are observed in the model and the number of bonds (or angles) that are defined in the Chemical Component Dictionary. The Link column lists molecule types, if any, to which the group is linked. The Z score for a bond length (or angle) is the number of standard deviations the observed value is removed from the expected value. A bond length (or angle) with  $|Z| > 2$  is considered an outlier worth inspection. RMSZ is the root-mean-square of all Z scores of the bond lengths (or angles).

Mol	Type	Chain	Res	Link	Bond lengths			Bond angles		
					Counts	RMSZ	$\# Z  > 2$	Counts	RMSZ	$\# Z  > 2$
5	GOL	A	841	-	5,5,5	1.02	0	5,5,5	1.06	0
5	GOL	A	840	-	5,5,5	1.28	1 (20%)	5,5,5	1.39	1 (20%)

In the following table, the Chirals column lists the number of chiral outliers, the number of chiral centers analysed, the number of these observed in the model and the number defined in the Chemical Component Dictionary. Similar counts are reported in the Torsion and Rings columns. '-' means no outliers of that kind were identified.

Mol	Type	Chain	Res	Link	Chirals	Torsions	Rings
5	GOL	A	841	-	-	0/4/4/4	-
5	GOL	A	840	-	-	4/4/4/4	-

All (1) bond length outliers are listed below:

Mol	Chain	Res	Type	Atoms	Z	Observed(Å)	Ideal(Å)
5	A	840	GOL	O1-C1	2.24	1.51	1.42

All (1) bond angle outliers are listed below:

Mol	Chain	Res	Type	Atoms	Z	Observed(°)	Ideal(°)
5	A	840	GOL	O1-C1-C2	2.45	121.93	110.20

There are no chirality outliers.

All (4) torsion outliers are listed below:

Mol	Chain	Res	Type	Atoms
5	A	840	GOL	O1-C1-C2-C3
5	A	840	GOL	C1-C2-C3-O3
5	A	840	GOL	O2-C2-C3-O3
5	A	840	GOL	O1-C1-C2-O2

There are no ring outliers.

1 monomer is involved in 1 short contact:

Mol	Chain	Res	Type	Clashes	Symm-Clashes
5	A	840	GOL	1	0

## 5.7 Other polymers [i](#)

There are no such residues in this entry.

## 5.8 Polymer linkage issues [i](#)

There are no chain breaks in this entry.

## 6 Fit of model and data [i](#)

### 6.1 Protein, DNA and RNA chains [i](#)

In the following table, the column labelled ‘#RSRZ> 2’ contains the number (and percentage) of RSRZ outliers, followed by percent RSRZ outliers for the chain as percentile scores relative to all X-ray entries and entries of similar resolution. The OWAB column contains the minimum, median, 95<sup>th</sup> percentile and maximum values of the occupancy-weighted average B-factor per residue. The column labelled ‘Q< 0.9’ lists the number of (and percentage) of residues with an average occupancy less than 0.9.

Mol	Chain	Analysed	<RSRZ>	#RSRZ>2	OWAB(Å <sup>2</sup> )	Q<0.9
1	A	755/793 (95%)	-0.35	13 (1%) 70 76	13, 22, 44, 83	0

All (13) RSRZ outliers are listed below:

Mol	Chain	Res	Type	RSRZ
1	A	758	VAL	5.7
1	A	456	TYR	4.0
1	A	35	ASN	2.5
1	A	457	GLY	2.4
1	A	450	GLU	2.4
1	A	730	TRP	2.3
1	A	285	TRP	2.3
1	A	34	LYS	2.3
1	A	419	VAL	2.3
1	A	729	GLU	2.2
1	A	199	GLU	2.2
1	A	198	SER	2.1
1	A	448	GLU	2.0

### 6.2 Non-standard residues in protein, DNA, RNA chains [i](#)

There are no non-standard protein/DNA/RNA residues in this entry.

### 6.3 Carbohydrates [i](#)

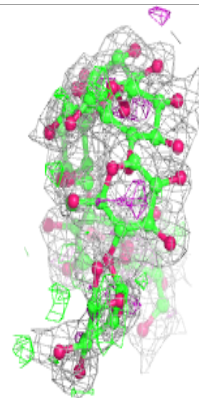
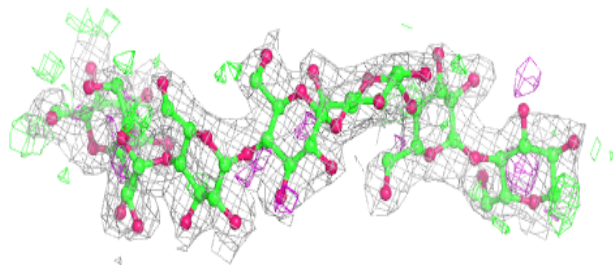
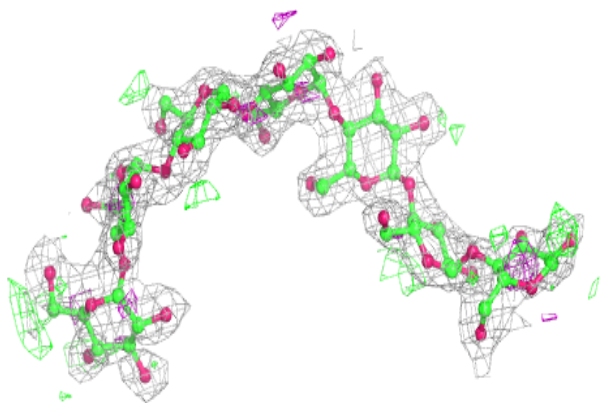
In the following table, the Atoms column lists the number of modelled atoms in the group and the number defined in the chemical component dictionary. The B-factors column lists the minimum, median, 95<sup>th</sup> percentile and maximum values of B factors of atoms in the group. The column labelled ‘Q< 0.9’ lists the number of atoms with occupancy less than 0.9.

Mol	Type	Chain	Res	Atoms	RSCC	RSR	B-factors( $\text{\AA}^2$ )	Q<0.9
2	GLC	B	7	11/12	0.69	0.29	32,57,68,68	0
2	GLC	B	1	11/12	0.73	0.27	32,62,72,73	0
4	GLC	D	3	11/12	0.76	0.36	56,71,78,84	0
3	GLC	C	1	12/12	0.85	0.27	35,59,64,68	0
2	GLC	E	1	11/12	0.86	0.30	40,57,65,68	0
2	GLC	G	2	11/12	0.86	0.31	59,69,76,79	0
2	GLC	G	1	12/12	0.86	0.33	38,56,65,68	0
4	GLC	I	1	12/12	0.86	0.22	44,57,59,62	0
3	GLC	C	4	11/12	0.87	0.39	59,68,74,75	0
3	GLC	F	1	12/12	0.88	0.27	40,55,59,63	0
3	GLC	F	4	11/12	0.88	0.26	51,61,66,76	0
2	GLC	B	2	11/12	0.89	0.14	45,54,61,63	0
2	GLC	B	6	11/12	0.89	0.26	37,49,59,60	0
4	GLC	I	2	11/12	0.89	0.19	33,42,53,53	0
3	GLC	C	3	11/12	0.90	0.24	31,41,53,55	0
2	GLC	B	3	11/12	0.92	0.17	41,46,50,51	0
2	GLC	B	4	11/12	0.92	0.22	34,42,48,50	0
3	GLC	H	1	12/12	0.92	0.32	36,52,58,60	0
4	GLC	I	3	11/12	0.93	0.28	42,45,55,58	0
2	GLC	E	6	11/12	0.93	0.30	60,63,72,75	0
2	GLC	E	2	11/12	0.93	0.17	26,33,36,45	0
2	GLC	G	3	11/12	0.93	0.23	53,57,64,66	0
2	GLC	B	5	11/12	0.94	0.17	29,40,42,54	0
2	GLC	E	5	11/12	0.94	0.22	40,49,54,60	0
2	GLC	E	7	11/12	0.94	0.31	63,65,72,72	0
3	GLC	H	4	11/12	0.94	0.33	40,46,56,67	0
3	GLC	F	3	11/12	0.95	0.12	28,33,40,44	0
4	GLC	D	2	11/12	0.95	0.17	31,39,45,52	0
3	GLC	C	2	11/12	0.95	0.18	27,34,39,40	0
2	GLC	G	5	11/12	0.95	0.17	36,37,40,41	0
4	GLC	D	1	12/12	0.95	0.10	32,35,44,45	0
2	GLC	G	7	11/12	0.96	0.10	24,31,40,44	0
2	GLC	G	4	11/12	0.96	0.21	43,47,49,53	0
2	GLC	G	6	11/12	0.96	0.07	26,29,33,35	0
3	GLC	H	3	11/12	0.96	0.12	25,27,30,33	0
2	GLC	E	4	11/12	0.96	0.13	26,30,34,39	0
2	GLC	E	3	11/12	0.97	0.09	22,25,27,31	0
3	GLC	F	2	11/12	0.97	0.09	28,30,38,40	0
3	GLC	H	2	11/12	0.98	0.10	22,26,30,30	0

The following is a graphical depiction of the model fit to experimental electron density for oligosaccharide. Each fit is shown from different orientation to approximate a three-dimensional view.

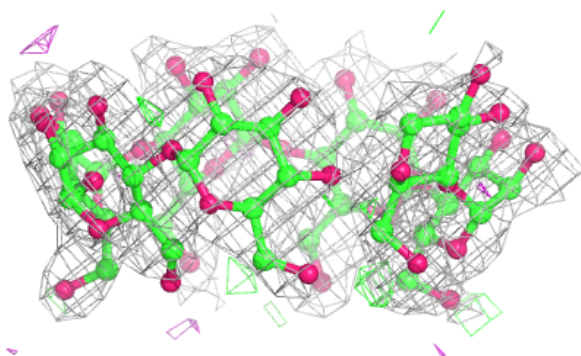
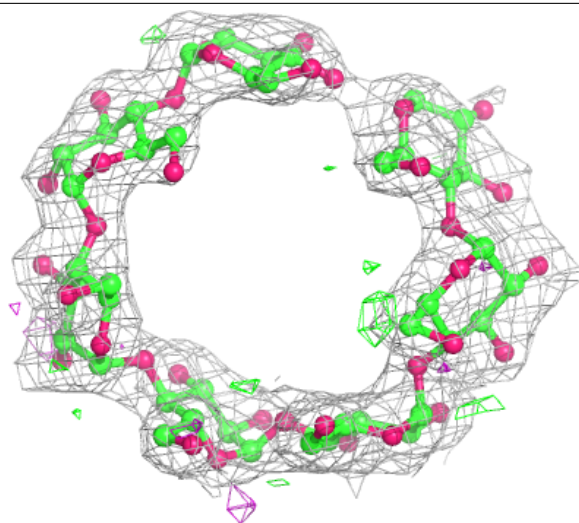
**Electron density around Chain B:**

$2mF_o-DF_c$  (at 0.7 rmsd) in gray  
 $mF_o-DF_c$  (at 3 rmsd) in purple (negative)  
and green (positive)



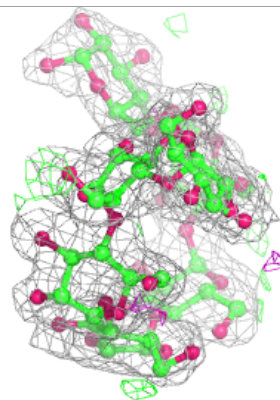
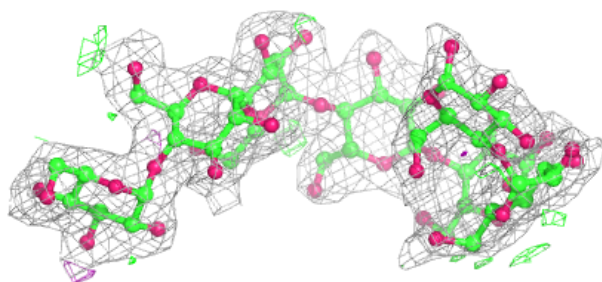
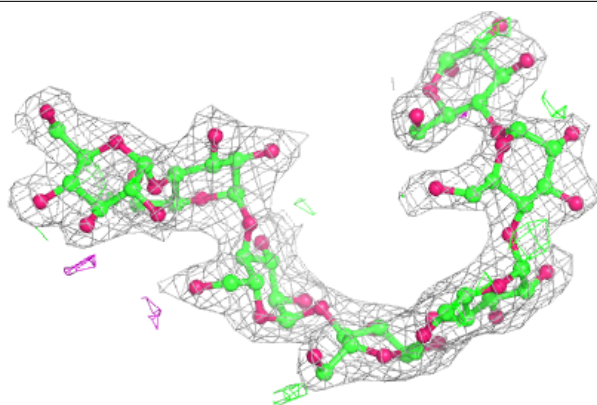
**Electron density around Chain E:**

$2mF_o-DF_c$  (at 0.7 rmsd) in gray  
 $mF_o-DF_c$  (at 3 rmsd) in purple (negative)  
and green (positive)

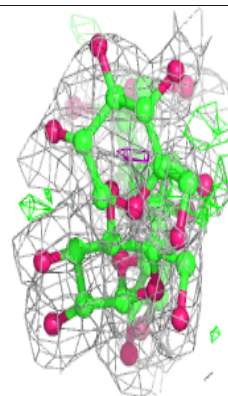
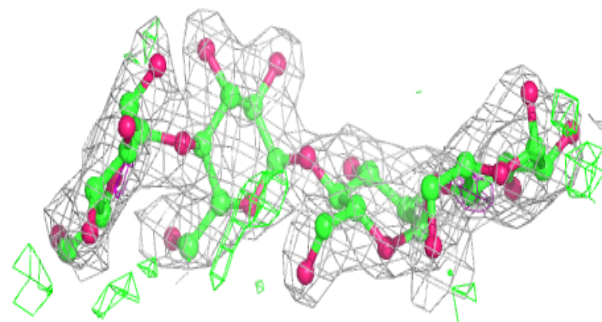
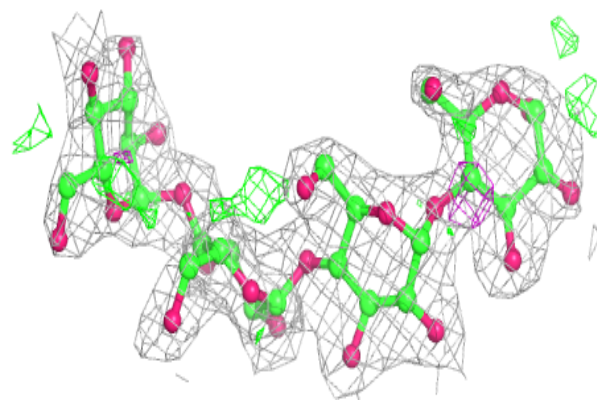


**Electron density around Chain G:**

$2mF_o-DF_c$  (at 0.7 rmsd) in gray  
 $mF_o-DF_c$  (at 3 rmsd) in purple (negative)  
and green (positive)

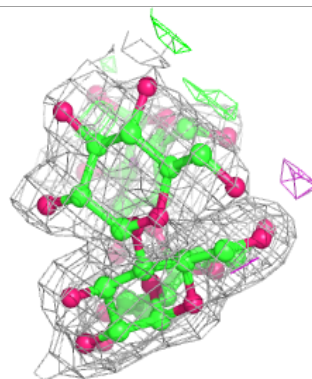
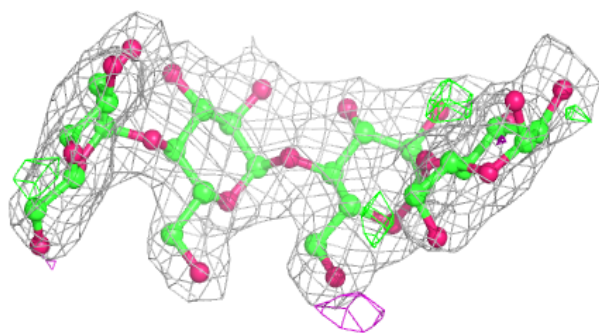
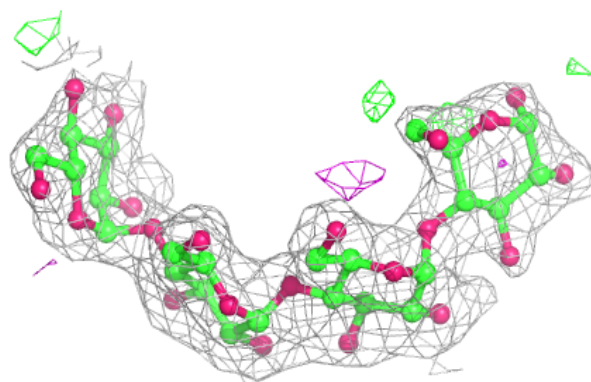
**Electron density around Chain C:**

$2mF_o-DF_c$  (at 0.7 rmsd) in gray  
 $mF_o-DF_c$  (at 3 rmsd) in purple (negative)  
and green (positive)

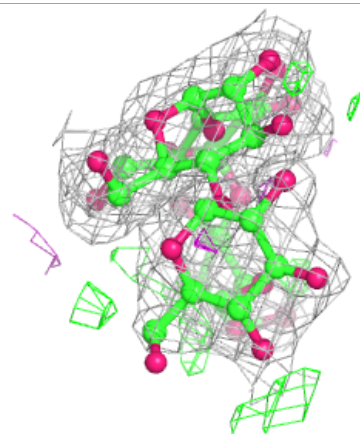
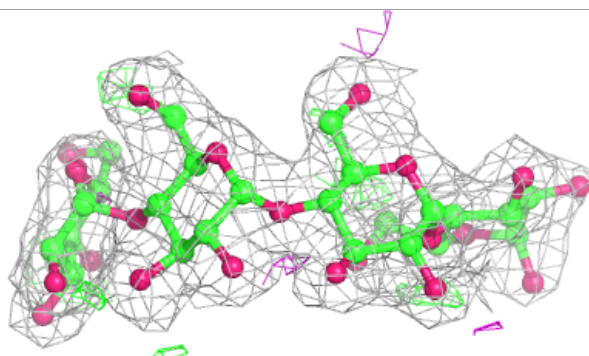
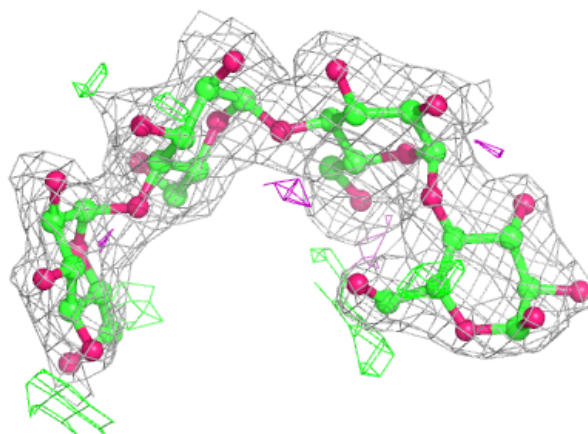


**Electron density around Chain F:**

$2mF_o - DF_c$  (at 0.7 rmsd) in gray  
 $mF_o - DF_c$  (at 3 rmsd) in purple (negative)  
and green (positive)

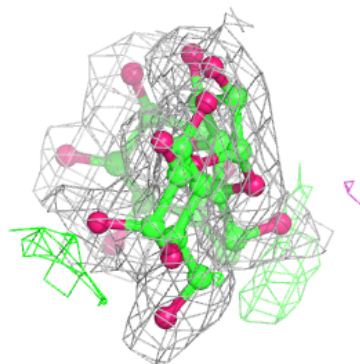
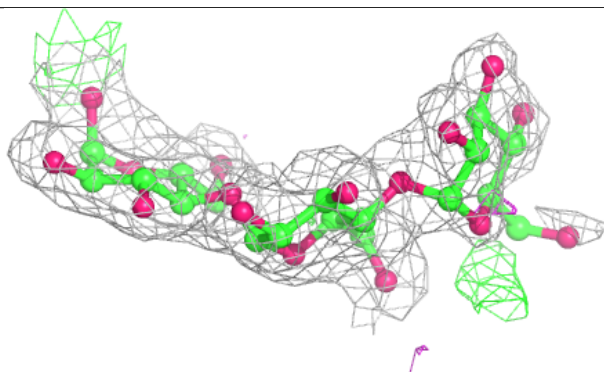
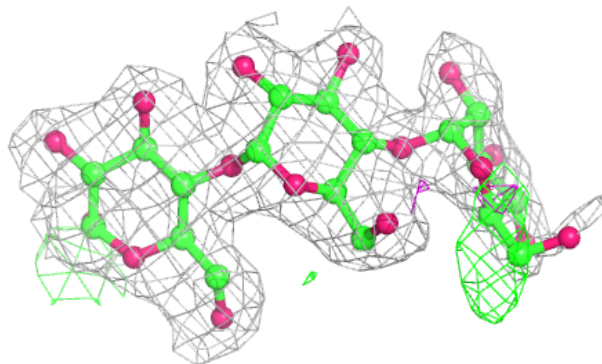
**Electron density around Chain H:**

$2mF_o - DF_c$  (at 0.7 rmsd) in gray  
 $mF_o - DF_c$  (at 3 rmsd) in purple (negative)  
and green (positive)

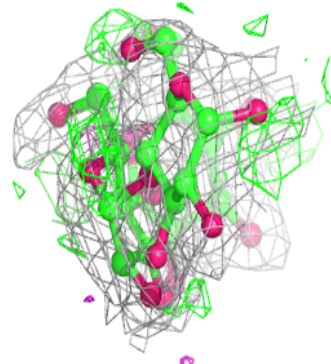
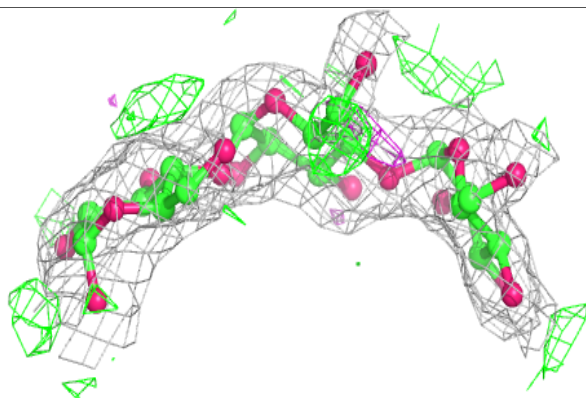
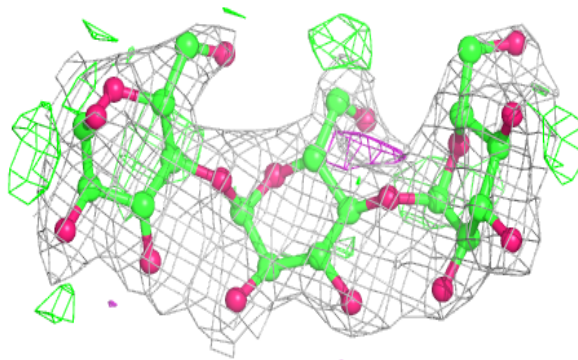


**Electron density around Chain D:**

$2mF_o-DF_c$  (at 0.7 rmsd) in gray  
 $mF_o-DF_c$  (at 3 rmsd) in purple (negative)  
and green (positive)

**Electron density around Chain I:**

$2mF_o-DF_c$  (at 0.7 rmsd) in gray  
 $mF_o-DF_c$  (at 3 rmsd) in purple (negative)  
and green (positive)



## 6.4 Ligands [i](#)

In the following table, the Atoms column lists the number of modelled atoms in the group and the number defined in the chemical component dictionary. The B-factors column lists the minimum, median, 95<sup>th</sup> percentile and maximum values of B factors of atoms in the group. The column labelled 'Q< 0.9' lists the number of atoms with occupancy less than 0.9.

Mol	Type	Chain	Res	Atoms	RSCC	RSR	B-factors( $\text{\AA}^2$ )	Q<0.9
5	GOL	A	840	6/6	0.88	0.18	39,46,55,55	0
5	GOL	A	841	6/6	0.89	0.18	33,43,45,51	0
6	MG	A	842	1/1	0.97	0.02	23,23,23,23	0

## 6.5 Other polymers [i](#)

There are no such residues in this entry.