



# Full wwPDB X-ray Structure Validation Report ⓘ

Oct 23, 2021 – 10:59 AM EDT

PDB ID : 2GRT  
Title : HUMAN GLUTATHIONE REDUCTASE A34E, R37W MUTANT, OXIDIZED GLUTATHIONE COMPLEX  
Authors : Stoll, V.S.; Simpson, S.J.; Krauth-Siegel, R.L.; Walsh, C.T.; Pai, E.F.  
Deposited on : 1997-02-12  
Resolution : 2.70 Å(reported)

This is a Full wwPDB X-ray Structure Validation Report for a publicly released PDB entry.

We welcome your comments at [validation@mail.wwpdb.org](mailto:validation@mail.wwpdb.org)

A user guide is available at

<https://www.wwpdb.org/validation/2017/XrayValidationReportHelp>

with specific help available everywhere you see the ⓘ symbol.

---

The following versions of software and data (see [references ⓘ](#)) were used in the production of this report:

MolProbity : 4.02b-467  
Mogul : 1.8.5 (274361), CSD as541be (2020)  
Xtriage (Phenix) : 1.13  
EDS : 2.23.2  
buster-report : 1.1.7 (2018)  
Percentile statistics : 20191225.v01 (using entries in the PDB archive December 25th 2019)  
Refmac : 5.8.0158  
CCP4 : 7.0.044 (Gargrove)  
Ideal geometry (proteins) : Engh & Huber (2001)  
Ideal geometry (DNA, RNA) : Parkinson et al. (1996)  
Validation Pipeline (wwPDB-VP) : 2.23.2

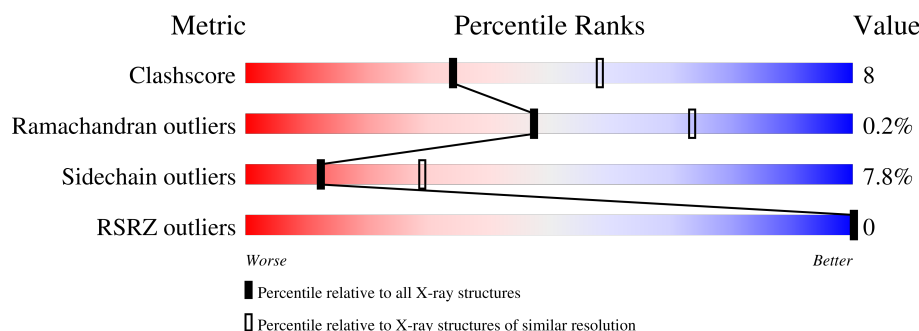
# 1 Overall quality at a glance

The following experimental techniques were used to determine the structure:

## *X-RAY DIFFRACTION*


The reported resolution of this entry is 2.70 Å.

Percentile scores (ranging between 0-100) for global validation metrics of the entry are shown in the following graphic. The table shows the number of entries on which the scores are based.



Metric	Whole archive (#Entries)	Similar resolution (#Entries, resolution range(Å))
Clashscore	141614	3122 (2.70-2.70)
Ramachandran outliers	138981	3069 (2.70-2.70)
Sidechain outliers	138945	3069 (2.70-2.70)
RSRZ outliers	127900	2737 (2.70-2.70)

The table below summarises the geometric issues observed across the polymeric chains and their fit to the electron density. The red, orange, yellow and green segments of the lower bar indicate the fraction of residues that contain outliers for  $\geq 3$ , 2, 1 and 0 types of geometric quality criteria respectively. A grey segment represents the fraction of residues that are not modelled. The numeric value for each fraction is indicated below the corresponding segment, with a dot representing fractions  $\leq 5\%$ . The upper red bar (where present) indicates the fraction of residues that have poor fit to the electron density. The numeric value is given above the bar.

Mol	Chain	Length	Quality of chain
1	A	461	

The following table lists non-polymeric compounds, carbohydrate monomers and non-standard residues in protein, DNA, RNA chains that are outliers for geometric or electron-density-fit criteria:

Mol	Type	Chain	Res	Chirality	Geometry	Clashes	Electron density
3	GDS	A	481	-	-	-	X

## 2 Entry composition [i](#)

There are 3 unique types of molecules in this entry. The entry contains 3599 atoms, of which 0 are hydrogens and 0 are deuteriums.

In the tables below, the ZeroOcc column contains the number of atoms modelled with zero occupancy, the AltConf column contains the number of residues with at least one atom in alternate conformation and the Trace column contains the number of residues modelled with at most 2 atoms.

- Molecule 1 is a protein called GLUTATHIONE REDUCTASE.

Mol	Chain	Residues	Atoms					ZeroOcc	AltConf	Trace
			Total	C	N	O	S			
1	A	461	3506	2219	601	662	24	0	0	0

There are 2 discrepancies between the modelled and reference sequences:

Chain	Residue	Modelled	Actual	Comment	Reference
A	34	GLU	ALA	engineered mutation	UNP P00390
A	37	TRP	ARG	engineered mutation	UNP P00390

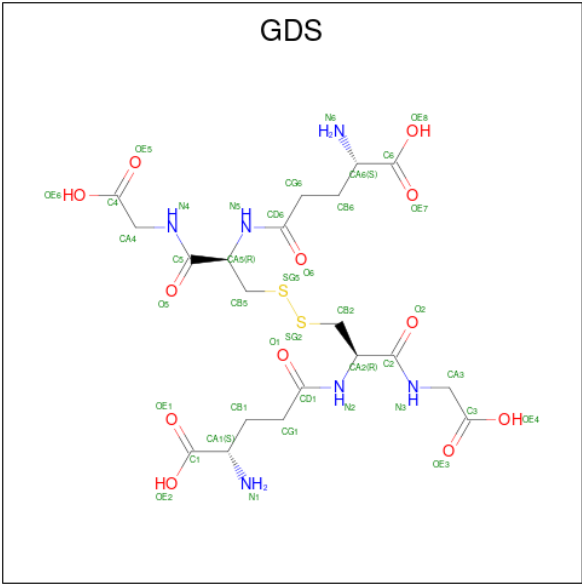
- Molecule 2 is FLAVIN-ADENINE DINUCLEOTIDE (three-letter code: FAD) (formula:  $C_{27}H_{33}N_9O_{15}P_2$ ).



Mol	Chain	Residues	Atoms					ZeroOcc	AltConf
			Total	C	N	O	P		
2	A	1	53	27	9	15	2	0	0

- Molecule 3 is OXIDIZED GLUTATHIONE DISULFIDE (three-letter code: GDS) (formula:

C<sub>20</sub>H<sub>32</sub>N<sub>6</sub>O<sub>12</sub>S<sub>2</sub>).

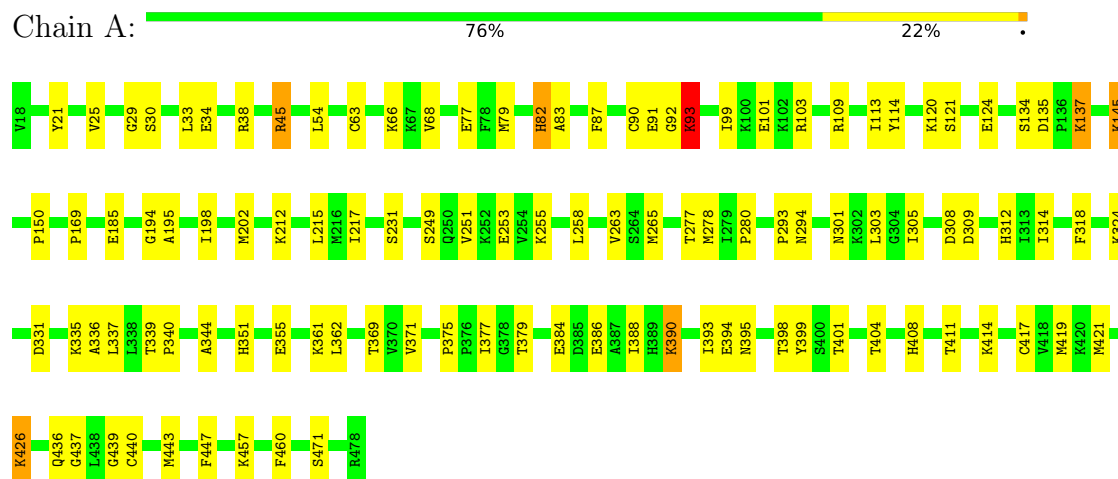


Mol	Chain	Residues	Atoms					ZeroOcc	AltConf
3	A	1	Total	C	N	O	S	0	0
			40	20	6	12	2		

### 3 Residue-property plots

These plots are drawn for all protein, RNA, DNA and oligosaccharide chains in the entry. The first graphic for a chain summarises the proportions of the various outlier classes displayed in the second graphic. The second graphic shows the sequence view annotated by issues in geometry and electron density. Residues are color-coded according to the number of geometric quality criteria for which they contain at least one outlier: green = 0, yellow = 1, orange = 2 and red = 3 or more. A red dot above a residue indicates a poor fit to the electron density ( $RSRZ > 2$ ). Stretches of 2 or more consecutive residues without any outlier are shown as a green connector. Residues present in the sample, but not in the model, are shown in grey.

#### • Molecule 1: GLUTATHIONE REDUCTASE



## 4 Data and refinement statistics

Property	Value	Source
Space group	B 1 1 2	Depositor
Cell constants a, b, c, $\alpha$ , $\beta$ , $\gamma$	119.40Å 84.53Å 63.46Å 90.00° 90.00° 58.71°	Depositor
Resolution (Å)	10.00 – 2.70 38.43 – 2.65	Depositor EDS
% Data completeness (in resolution range)	79.9 (10.00-2.70) 76.3 (38.43-2.65)	Depositor EDS
$R_{merge}$	(Not available)	Depositor
$R_{sym}$	0.12	Depositor
$\langle I/\sigma(I) \rangle$	-	Xtriage
Refinement program	X-PLOR 3.1	Depositor
R, $R_{free}$	0.189 , (Not available) 0.171 , (Not available)	Depositor DCC
$R_{free}$ test set	No test flags present.	wwPDB-VP
Wilson B-factor (Å <sup>2</sup> )	26.4	Xtriage
Anisotropy	0.375	Xtriage
Bulk solvent $k_{sol}$ (e/Å <sup>3</sup> ), $B_{sol}$ (Å <sup>2</sup> )	0.32 , 67.3	EDS
L-test for twinning <sup>1</sup>	$\langle  L  \rangle = 0.44$ , $\langle L^2 \rangle = 0.27$	Xtriage
Estimated twinning fraction	No twinning to report.	Xtriage
$F_o, F_c$ correlation	0.93	EDS
Total number of atoms	3599	wwPDB-VP
Average B, all atoms (Å <sup>2</sup> )	14.0	wwPDB-VP

Xtriage's analysis on translational NCS is as follows: *The largest off-origin peak in the Patterson function is 7.09% of the height of the origin peak. No significant pseudotranslation is detected.*

<sup>1</sup>Theoretical values of  $\langle |L| \rangle$ ,  $\langle L^2 \rangle$  for acentric reflections are 0.5, 0.333 respectively for untwinned datasets, and 0.375, 0.2 for perfectly twinned datasets.

## 5 Model quality [i](#)

### 5.1 Standard geometry [i](#)

Bond lengths and bond angles in the following residue types are not validated in this section: GDS, FAD

The Z score for a bond length (or angle) is the number of standard deviations the observed value is removed from the expected value. A bond length (or angle) with  $|Z| > 5$  is considered an outlier worth inspection. RMSZ is the root-mean-square of all Z scores of the bond lengths (or angles).

Mol	Chain	Bond lengths		Bond angles	
		RMSZ	$\# Z  > 5$	RMSZ	$\# Z  > 5$
1	A	0.58	0/3575	0.77	0/4838

There are no bond length outliers.

There are no bond angle outliers.

There are no chirality outliers.

There are no planarity outliers.

### 5.2 Too-close contacts [i](#)

In the following table, the Non-H and H(model) columns list the number of non-hydrogen atoms and hydrogen atoms in the chain respectively. The H(added) column lists the number of hydrogen atoms added and optimized by MolProbity. The Clashes column lists the number of clashes within the asymmetric unit, whereas Symm-Clashes lists symmetry-related clashes.

Mol	Chain	Non-H	H(model)	H(added)	Clashes	Symm-Clashes
1	A	3506	0	3535	58	0
2	A	53	0	24	0	0
3	A	40	0	28	6	0
All	All	3599	0	3587	60	0

The all-atom clashscore is defined as the number of clashes found per 1000 atoms (including hydrogen atoms). The all-atom clashscore for this structure is 8.

All (60) close contacts within the same asymmetric unit are listed below, sorted by their clash magnitude.

Atom-1	Atom-2	Interatomic distance (Å)	Clash overlap (Å)
1:A:114:TYR:OH	3:A:481:GDS:HB22	1.66	0.94

*Continued on next page...*

*Continued from previous page...*

Atom-1	Atom-2	Interatomic distance (Å)	Clash overlap (Å)
1:A:21:TYR:HD2	1:A:45:ARG:HD2	1.52	0.73
1:A:194:GLY:O	1:A:215:LEU:HD11	1.91	0.70
1:A:135:ASP:HB3	1:A:137:LYS:CE	2.25	0.67
1:A:145:LYS:HA	1:A:145:LYS:HE3	1.76	0.66
1:A:331:ASP:HA	1:A:337:LEU:HD22	1.80	0.63
1:A:339:THR:HB	1:A:340:PRO:HD3	1.81	0.62
1:A:169:PRO:HG2	1:A:253:GLU:HB2	1.83	0.60
3:A:481:GDS:O6	3:A:481:GDS:HB52	2.03	0.58
1:A:443:MET:HG3	1:A:471:SER:HB3	1.85	0.58
1:A:34:GLU:HB2	3:A:481:GDS:OE3	2.05	0.56
1:A:369:THR:HG23	1:A:379:THR:HG23	1.87	0.56
1:A:371:VAL:HB	1:A:377:ILE:HB	1.88	0.56
1:A:386:GLU:O	1:A:390:LYS:HB2	2.05	0.54
1:A:308:ASP:HB3	1:A:314:ILE:HD11	1.90	0.54
1:A:21:TYR:CD2	1:A:45:ARG:HD2	2.38	0.54
1:A:384:GLU:O	1:A:388:ILE:HG12	2.07	0.53
1:A:92:GLY:O	1:A:93:LYS:HB3	2.08	0.53
1:A:198:ILE:O	1:A:202:MET:HG2	2.09	0.52
1:A:135:ASP:HB3	1:A:137:LYS:NZ	2.24	0.51
1:A:395:ASN:OD1	1:A:426:LYS:HE3	2.12	0.49
1:A:421:MET:SD	1:A:457:LYS:HD3	2.53	0.48
1:A:83:ALA:HA	1:A:87:PHE:O	2.13	0.48
1:A:293:PRO:HG3	1:A:312:HIS:CD2	2.49	0.48
1:A:417:CYS:HA	1:A:436:GLN:O	2.13	0.48
1:A:408:HIS:HA	1:A:411:THR:OG1	2.14	0.48
3:A:481:GDS:CD1	3:A:481:GDS:HN3	2.27	0.47
1:A:113:ILE:HG21	3:A:481:GDS:HA42	1.96	0.47
1:A:195:ALA:HB2	1:A:217:ILE:HG22	1.97	0.47
1:A:21:TYR:O	1:A:150:PRO:HD2	2.15	0.47
1:A:318:PHE:CE1	1:A:361:LYS:HD3	2.50	0.47
1:A:375:PRO:CG	1:A:437:GLY:HA2	2.45	0.46
1:A:351:HIS:O	1:A:355:GLU:HB3	2.16	0.46
1:A:398:THR:HA	1:A:421:MET:O	2.15	0.46
1:A:30:SER:HB3	1:A:339:THR:HG23	1.98	0.45
1:A:29:GLY:O	1:A:33:LEU:HG	2.17	0.44
1:A:92:GLY:O	1:A:93:LYS:CB	2.66	0.44
1:A:384:GLU:OE2	1:A:398:THR:HG21	2.16	0.44
1:A:303:LEU:HB2	1:A:305:ILE:HG13	1.99	0.44
1:A:66:LYS:HD2	1:A:66:LYS:C	2.37	0.44
1:A:335:LYS:HG3	1:A:336:ALA:N	2.33	0.44
1:A:114:TYR:CZ	3:A:481:GDS:HB22	2.51	0.43

*Continued on next page...*



Continued from previous page...

Atom-1	Atom-2	Interatomic distance (Å)	Clash overlap (Å)
1:A:439:GLY:O	1:A:443:MET:HB2	2.17	0.43
1:A:440:CYS:HA	1:A:443:MET:HE3	1.99	0.43
1:A:408:HIS:O	1:A:414:LYS:HE3	2.18	0.43
1:A:344:ALA:HB1	1:A:362:LEU:HD13	2.01	0.43
1:A:249:SER:HB3	1:A:265:MET:SD	2.59	0.42
1:A:251:VAL:HG13	1:A:263:VAL:HG13	2.01	0.42
1:A:109:ARG:O	1:A:113:ILE:HG13	2.20	0.42
1:A:38:ARG:NH1	1:A:38:ARG:HG2	2.34	0.42
1:A:68:VAL:HB	1:A:103:ARG:HG3	2.02	0.42
1:A:401:THR:HG22	1:A:419:MET:HB2	2.01	0.42
1:A:79:MET:O	1:A:82:HIS:HB2	2.20	0.42
1:A:399:TYR:CE2	1:A:457:LYS:HE3	2.55	0.42
1:A:195:ALA:HB2	1:A:217:ILE:CG2	2.50	0.41
1:A:447:PHE:CD1	1:A:460:PHE:CE2	3.08	0.41
1:A:277:THR:HG22	1:A:278:MET:N	2.35	0.41
1:A:255:LYS:HE2	1:A:255:LYS:HB2	1.88	0.41
1:A:135:ASP:HB3	1:A:137:LYS:HE2	2.00	0.41
1:A:45:ARG:HH22	1:A:124:GLU:HG3	1.87	0.40

There are no symmetry-related clashes.

## 5.3 Torsion angles

### 5.3.1 Protein backbone

In the following table, the Percentiles column shows the percent Ramachandran outliers of the chain as a percentile score with respect to all X-ray entries followed by that with respect to entries of similar resolution.

The Analysed column shows the number of residues for which the backbone conformation was analysed, and the total number of residues.

Mol	Chain	Analysed	Favoured	Allowed	Outliers	Percentiles
1	A	459/461 (100%)	426 (93%)	32 (7%)	1 (0%)	47 73

All (1) Ramachandran outliers are listed below:

Mol	Chain	Res	Type
1	A	93	LYS

### 5.3.2 Protein sidechains ⓘ

In the following table, the Percentiles column shows the percent sidechain outliers of the chain as a percentile score with respect to all X-ray entries followed by that with respect to entries of similar resolution.

The Analysed column shows the number of residues for which the sidechain conformation was analysed, and the total number of residues.

Mol	Chain	Analysed	Rotameric	Outliers	Percentiles	
1	A	383/383 (100%)	353 (92%)	30 (8%)	12	29

All (30) residues with a non-rotameric sidechain are listed below:

Mol	Chain	Res	Type
1	A	25	VAL
1	A	45	ARG
1	A	54	LEU
1	A	63	CYS
1	A	77	GLU
1	A	82	HIS
1	A	90	CYS
1	A	91	GLU
1	A	93	LYS
1	A	99	ILE
1	A	101	GLU
1	A	120	LYS
1	A	121	SER
1	A	134	SER
1	A	137	LYS
1	A	145	LYS
1	A	185	GLU
1	A	212	LYS
1	A	231	SER
1	A	258	LEU
1	A	280	PRO
1	A	294	ASN
1	A	301	ASN
1	A	309	ASP
1	A	324	LYS
1	A	390	LYS
1	A	393	ILE
1	A	394	GLU
1	A	404	THR
1	A	426	LYS

Sometimes sidechains can be flipped to improve hydrogen bonding and reduce clashes. All (9) such sidechains are listed below:

Mol	Chain	Res	Type
1	A	52	HIS
1	A	82	HIS
1	A	111	ASN
1	A	115	GLN
1	A	116	ASN
1	A	129	HIS
1	A	240	ASN
1	A	312	HIS
1	A	365	ASN

### 5.3.3 RNA [i](#)

There are no RNA molecules in this entry.

## 5.4 Non-standard residues in protein, DNA, RNA chains [i](#)

There are no non-standard protein/DNA/RNA residues in this entry.

## 5.5 Carbohydrates [i](#)

There are no monosaccharides in this entry.

## 5.6 Ligand geometry [i](#)

2 ligands are modelled in this entry.

In the following table, the Counts columns list the number of bonds (or angles) for which Mogul statistics could be retrieved, the number of bonds (or angles) that are observed in the model and the number of bonds (or angles) that are defined in the Chemical Component Dictionary. The Link column lists molecule types, if any, to which the group is linked. The Z score for a bond length (or angle) is the number of standard deviations the observed value is removed from the expected value. A bond length (or angle) with  $|Z| > 2$  is considered an outlier worth inspection. RMSZ is the root-mean-square of all Z scores of the bond lengths (or angles).

Mol	Type	Chain	Res	Link	Bond lengths			Bond angles		
					Counts	RMSZ	$\# Z  > 2$	Counts	RMSZ	$\# Z  > 2$
3	GDS	A	481	-	25,39,39	1.05	1 (4%)	32,50,50	1.39	5 (15%)
2	FAD	A	479	-	51,58,58	5.52	16 (31%)	60,89,89	3.11	22 (36%)

In the following table, the Chirals column lists the number of chiral outliers, the number of chiral centers analysed, the number of these observed in the model and the number defined in the Chemical Component Dictionary. Similar counts are reported in the Torsion and Rings columns. '-' means no outliers of that kind were identified.

Mol	Type	Chain	Res	Link	Chirals	Torsions	Rings
3	GDS	A	481	-	-	18/39/51/51	-
2	FAD	A	479	-	-	6/30/50/50	0/6/6/6

All (17) bond length outliers are listed below:

Mol	Chain	Res	Type	Atoms	Z	Observed(Å)	Ideal(Å)
2	A	479	FAD	C8M-C8	-25.70	0.99	1.51
2	A	479	FAD	C7M-C7	-24.79	1.01	1.51
2	A	479	FAD	C4X-C10	8.69	1.47	1.38
2	A	479	FAD	C4-C4X	7.03	1.53	1.41
2	A	479	FAD	C4X-N5	-4.37	1.27	1.33
2	A	479	FAD	C8-C7	4.21	1.51	1.40
2	A	479	FAD	C2B-C1B	-3.89	1.47	1.53
2	A	479	FAD	C10-N1	-3.76	1.28	1.33
2	A	479	FAD	O2'-C2'	-2.89	1.37	1.43
2	A	479	FAD	C6-C5X	-2.75	1.37	1.41
2	A	479	FAD	O4'-C4'	-2.71	1.37	1.43
2	A	479	FAD	O2B-C2B	-2.70	1.36	1.43
2	A	479	FAD	C9A-N10	2.41	1.41	1.38
2	A	479	FAD	C5'-C4'	2.21	1.54	1.51
2	A	479	FAD	C1'-N10	2.11	1.50	1.48
3	A	481	GDS	CG1-CD1	2.09	1.55	1.51
2	A	479	FAD	C8A-N7A	-2.01	1.31	1.34

All (27) bond angle outliers are listed below:

Mol	Chain	Res	Type	Atoms	Z	Observed(°)	Ideal(°)
2	A	479	FAD	C4-N3-C2	12.04	125.30	115.14
2	A	479	FAD	C4-C4X-C10	-7.68	114.87	119.95
2	A	479	FAD	C4X-C4-N3	-7.08	113.75	123.43
2	A	479	FAD	C1'-N10-C9A	6.95	123.76	118.29
2	A	479	FAD	O4B-C1B-C2B	-6.79	97.01	106.93
2	A	479	FAD	C6-C5X-N5	-5.18	113.35	119.05
2	A	479	FAD	C3B-C2B-C1B	4.67	108.01	100.98
2	A	479	FAD	C5A-C6A-N6A	4.46	127.13	120.35
2	A	479	FAD	C10-C4X-N5	3.93	123.98	121.26
3	A	481	GDS	C2-CA2-N2	3.92	121.84	111.16
2	A	479	FAD	O5'-C5'-C4'	3.52	118.75	109.36

*Continued on next page...*

*Continued from previous page...*

Mol	Chain	Res	Type	Atoms	Z	Observed(°)	Ideal(°)
2	A	479	FAD	P-O3P-PA	3.49	144.80	132.83
2	A	479	FAD	C2B-C3B-C4B	-3.07	96.68	102.64
2	A	479	FAD	C4X-C10-N10	-2.89	117.33	120.30
2	A	479	FAD	C6-C5X-C9A	2.82	122.75	119.05
2	A	479	FAD	O3B-C3B-C4B	2.78	119.08	111.05
2	A	479	FAD	C5A-C6A-N1A	-2.75	114.12	120.35
3	A	481	GDS	CA5-C5-N4	-2.66	111.19	116.54
2	A	479	FAD	O2P-P-O5'	2.56	119.63	107.75
2	A	479	FAD	C7M-C7-C8	2.30	125.45	120.74
2	A	479	FAD	C1'-N10-C10	-2.26	116.38	118.41
3	A	481	GDS	C4-CA4-N4	-2.25	106.09	110.43
2	A	479	FAD	C4-C4X-N5	2.22	121.14	118.60
3	A	481	GDS	CA2-N2-CD1	2.08	126.99	121.65
3	A	481	GDS	CA5-N5-CD6	2.05	126.92	121.65
2	A	479	FAD	O5'-P-O1P	-2.04	101.09	109.07
2	A	479	FAD	C7M-C7-C6	-2.03	115.48	120.34

There are no chirality outliers.

All (24) torsion outliers are listed below:

Mol	Chain	Res	Type	Atoms
2	A	479	FAD	C5B-O5B-PA-O1A
2	A	479	FAD	C5B-O5B-PA-O3P
3	A	481	GDS	C1-CA1-CB1-CG1
3	A	481	GDS	CB5-CA5-N5-CD6
3	A	481	GDS	C5-CA5-CB5-SG5
3	A	481	GDS	N5-CA5-CB5-SG5
3	A	481	GDS	C6-CA6-CB6-CG6
3	A	481	GDS	N6-CA6-CB6-CG6
3	A	481	GDS	CA6-CB6-CG6-CD6
3	A	481	GDS	CA1-CB1-CG1-CD1
3	A	481	GDS	N2-CD1-CG1-CB1
3	A	481	GDS	O1-CD1-CG1-CB1
3	A	481	GDS	CA5-CB5-SG5-SG2
2	A	479	FAD	PA-O3P-P-O5'
3	A	481	GDS	C2-CA2-N2-CD1
2	A	479	FAD	C5B-O5B-PA-O2A
3	A	481	GDS	N1-CA1-CB1-CG1
3	A	481	GDS	O5-C5-N4-CA4
3	A	481	GDS	O6-CD6-CG6-CB6
3	A	481	GDS	C4-CA4-N4-C5
2	A	479	FAD	P-O3P-PA-O1A

*Continued on next page...*

*Continued from previous page...*

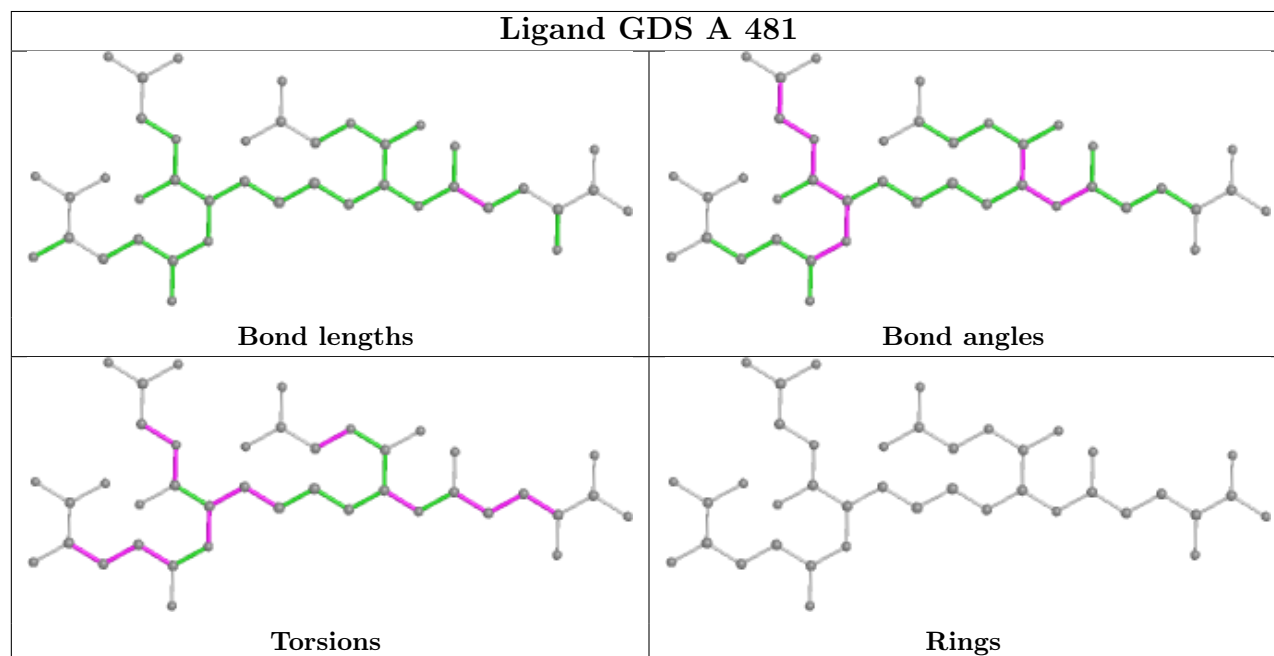
Mol	Chain	Res	Type	Atoms
2	A	479	FAD	O4B-C4B-C5B-O5B
3	A	481	GDS	N5-CD6-CG6-CB6
3	A	481	GDS	C3-CA3-N3-C2

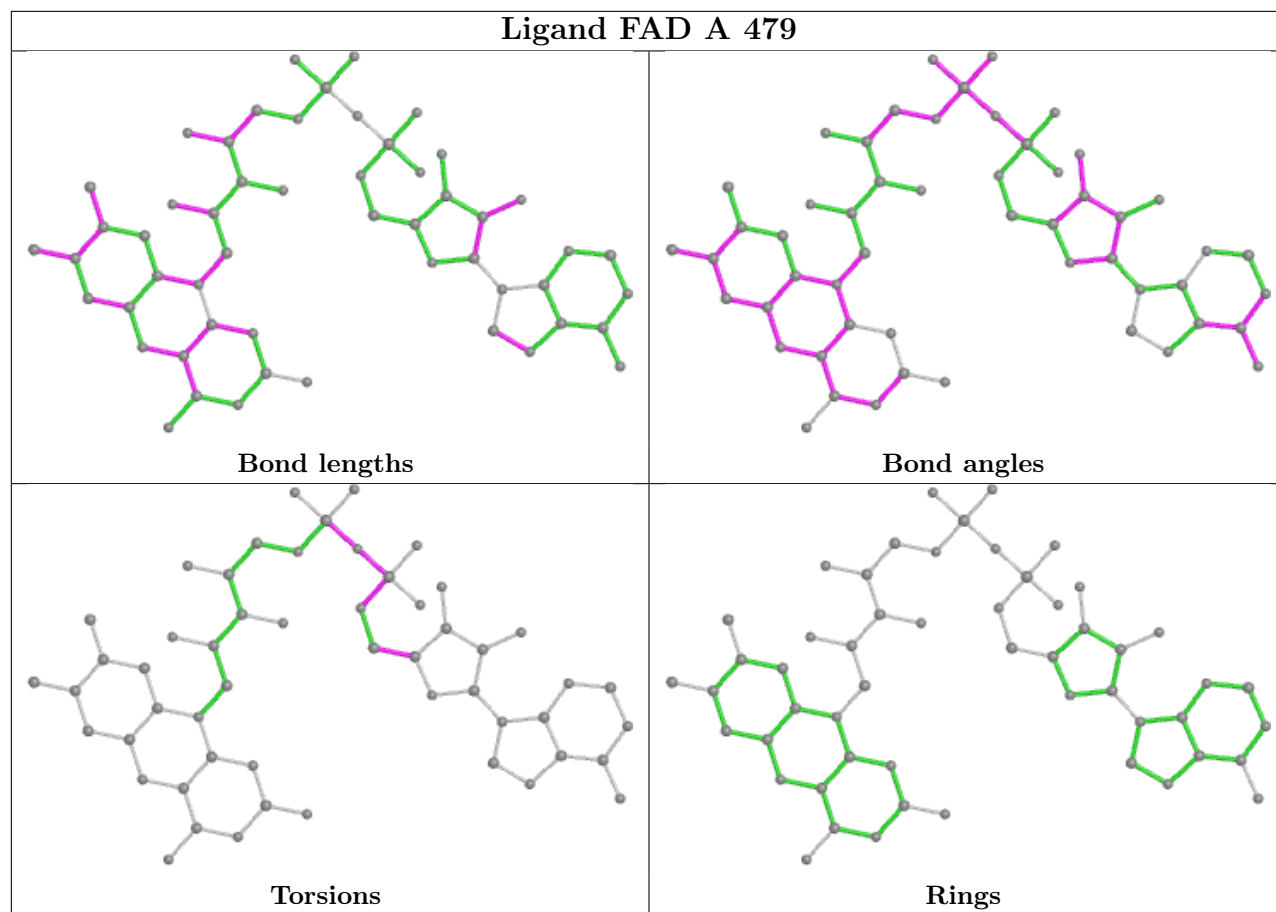
There are no ring outliers.

1 monomer is involved in 6 short contacts:

Mol	Chain	Res	Type	Clashes	Symm-Clashes
3	A	481	GDS	6	0

The following is a two-dimensional graphical depiction of Mogul quality analysis of bond lengths, bond angles, torsion angles, and ring geometry for all instances of the Ligand of Interest. In addition, ligands with molecular weight > 250 and outliers as shown on the validation Tables will also be included. For torsion angles, if less than 5% of the Mogul distribution of torsion angles is within 10 degrees of the torsion angle in question, then that torsion angle is considered an outlier. Any bond that is central to one or more torsion angles identified as an outlier by Mogul will be highlighted in the graph. For rings, the root-mean-square deviation (RMSD) between the ring in question and similar rings identified by Mogul is calculated over all ring torsion angles. If the average RMSD is greater than 60 degrees and the minimal RMSD between the ring in question and any Mogul-identified rings is also greater than 60 degrees, then that ring is considered an outlier. The outliers are highlighted in purple. The color gray indicates Mogul did not find sufficient equivalents in the CSD to analyse the geometry.





## 5.7 Other polymers [i](#)

There are no such residues in this entry.

## 5.8 Polymer linkage issues [i](#)

There are no chain breaks in this entry.

## 6 Fit of model and data [i](#)

### 6.1 Protein, DNA and RNA chains [i](#)

In the following table, the column labelled ‘#RSRZ> 2’ contains the number (and percentage) of RSRZ outliers, followed by percent RSRZ outliers for the chain as percentile scores relative to all X-ray entries and entries of similar resolution. The OWAB column contains the minimum, median, 95<sup>th</sup> percentile and maximum values of the occupancy-weighted average B-factor per residue. The column labelled ‘Q< 0.9’ lists the number of (and percentage) of residues with an average occupancy less than 0.9.

Mol	Chain	Analysed	<RSRZ>	#RSRZ>2	OWAB(Å <sup>2</sup> )	Q<0.9
1	A	461/461 (100%)	-0.69	0 100 100	2, 9, 42, 84	0

There are no RSRZ outliers to report.

### 6.2 Non-standard residues in protein, DNA, RNA chains [i](#)

There are no non-standard protein/DNA/RNA residues in this entry.

### 6.3 Carbohydrates [i](#)

There are no monosaccharides in this entry.

### 6.4 Ligands [i](#)

In the following table, the Atoms column lists the number of modelled atoms in the group and the number defined in the chemical component dictionary. The B-factors column lists the minimum, median, 95<sup>th</sup> percentile and maximum values of B factors of atoms in the group. The column labelled ‘Q< 0.9’ lists the number of atoms with occupancy less than 0.9.

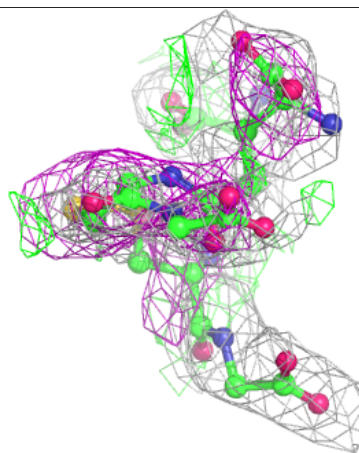
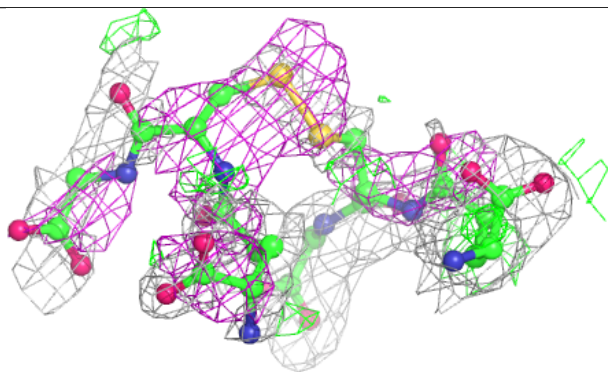
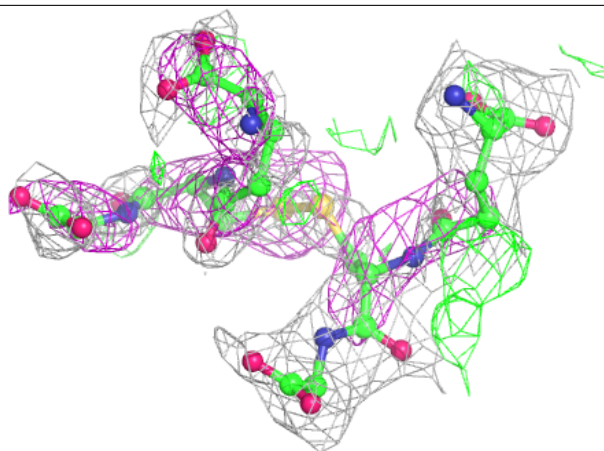
Mol	Type	Chain	Res	Atoms	RSCC	RSR	B-factors(Å <sup>2</sup> )	Q<0.9
3	GDS	A	481	40/40	0.60	0.41	13,26,54,63	0
2	FAD	A	479	53/53	0.96	0.14	15,15,15,15	0

The following is a graphical depiction of the model fit to experimental electron density of all instances of the Ligand of Interest. In addition, ligands with molecular weight > 250 and outliers as shown on the geometry validation Tables will also be included. Each fit is shown from different orientation to approximate a three-dimensional view.

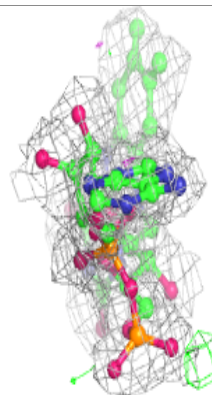
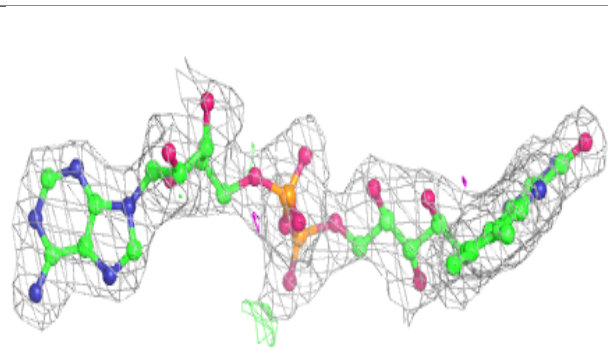
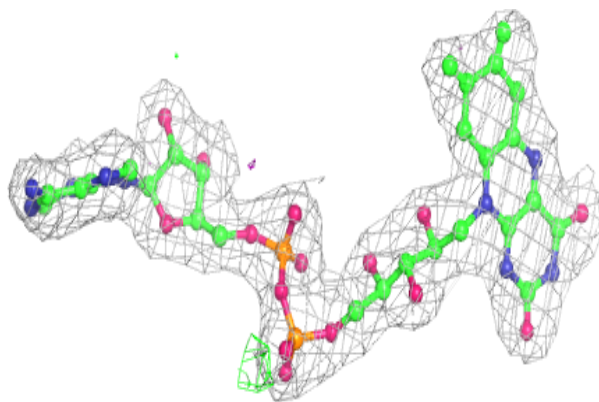


**Electron density around GDS A 481:**

$2mF_o-DF_c$  (at 0.7 rmsd) in gray  
 $mF_o-DF_c$  (at 3 rmsd) in purple (negative)  
and green (positive)

**Electron density around FAD A 479:**

$2mF_o-DF_c$  (at 0.7 rmsd) in gray  
 $mF_o-DF_c$  (at 3 rmsd) in purple (negative)  
and green (positive)



## 6.5 Other polymers [i](#)

There are no such residues in this entry.