



Full wwPDB X-ray Structure Validation Report ⓘ

Sep 13, 2020 – 04:13 PM BST

PDB ID : 4GRI
Title : Crystal structure of a glutamyl-tRNA synthetase GluRS from *Borrelia burgdorferi* bound to glutamic acid and zinc
Authors : Seattle Structural Genomics Center for Infectious Disease (SSGCID)
Deposited on : 2012-08-24
Resolution : 2.60 Å(reported)

This is a Full wwPDB X-ray Structure Validation Report for a publicly released PDB entry.

We welcome your comments at validation@mail.wwpdb.org

A user guide is available at

<https://www.wwpdb.org/validation/2017/XrayValidationReportHelp>

with specific help available everywhere you see the ⓘ symbol.

The following versions of software and data (see [references ⓘ](#)) were used in the production of this report:

MolProbity : 4.02b-467
Mogul : 1.8.5 (274361), CSD as541be (2020)
Xtriage (Phenix) : 1.13
EDS : 2.14.4.dev1
Percentile statistics : 20191225.v01 (using entries in the PDB archive December 25th 2019)
Refmac : 5.8.0158
CCP4 : 7.0.044 (Gargrove)
Ideal geometry (proteins) : Engh & Huber (2001)
Ideal geometry (DNA, RNA) : Parkinson et al. (1996)
Validation Pipeline (wwPDB-VP) : 2.14.4.dev1

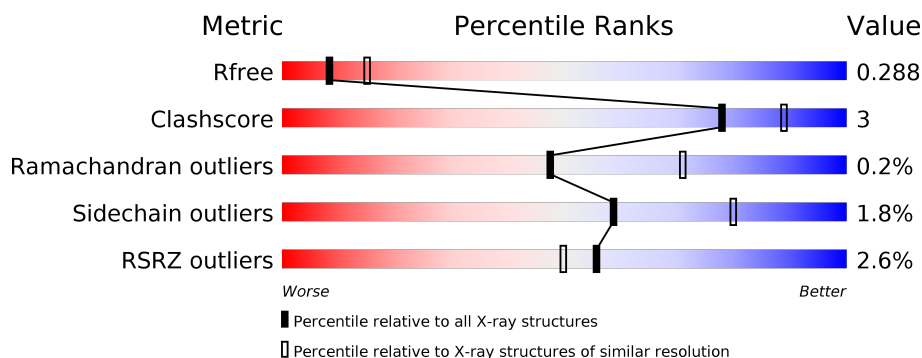
1 Overall quality at a glance

The following experimental techniques were used to determine the structure:

X-RAY DIFFRACTION

The reported resolution of this entry is 2.60 Å.

Percentile scores (ranging between 0-100) for global validation metrics of the entry are shown in the following graphic. The table shows the number of entries on which the scores are based.



Metric	Whole archive (#Entries)	Similar resolution (#Entries, resolution range(Å))
R_{free}	130704	3163 (2.60-2.60)
Clashscore	141614	3518 (2.60-2.60)
Ramachandran outliers	138981	3455 (2.60-2.60)
Sidechain outliers	138945	3455 (2.60-2.60)
RSRZ outliers	127900	3104 (2.60-2.60)

The table below summarises the geometric issues observed across the polymeric chains and their fit to the electron density. The red, orange, yellow and green segments on the lower bar indicate the fraction of residues that contain outliers for ≥ 3 , 2, 1 and 0 types of geometric quality criteria respectively. A grey segment represents the fraction of residues that are not modelled. The numeric value for each fraction is indicated below the corresponding segment, with a dot representing fractions $\leq 5\%$. The upper red bar (where present) indicates the fraction of residues that have poor fit to the electron density. The numeric value is given above the bar.

Mol	Chain	Length	Quality of chain
1	A	512	<div> <div>4%</div> <div>85%</div> <div>9%</div> <div>7%</div> </div>
1	B	512	<div> <div>%</div> <div>87%</div> <div>7%</div> <div>5%</div> </div>

2 Entry composition

There are 5 unique types of molecules in this entry. The entry contains 7838 atoms, of which 0 are hydrogens and 0 are deuteriums.

In the tables below, the ZeroOcc column contains the number of atoms modelled with zero occupancy, the AltConf column contains the number of residues with at least one atom in alternate conformation and the Trace column contains the number of residues modelled with at most 2 atoms.

- Molecule 1 is a protein called Glutamate-tRNA ligase.

Mol	Chain	Residues	Atoms					ZeroOcc	AltConf	Trace
1	A	478	Total	C	N	O	S	0	0	0
			3735	2410	630	684	11			
1	B	485	Total	C	N	O	S	0	0	0
			3791	2453	636	691	11			

There are 46 discrepancies between the modelled and reference sequences:

Chain	Residue	Modelled	Actual	Comment	Reference
A	-20	MET	-	EXPRESSION TAG	UNP O51345
A	-19	ALA	-	EXPRESSION TAG	UNP O51345
A	-18	HIS	-	EXPRESSION TAG	UNP O51345
A	-17	HIS	-	EXPRESSION TAG	UNP O51345
A	-16	HIS	-	EXPRESSION TAG	UNP O51345
A	-15	HIS	-	EXPRESSION TAG	UNP O51345
A	-14	HIS	-	EXPRESSION TAG	UNP O51345
A	-13	HIS	-	EXPRESSION TAG	UNP O51345
A	-12	MET	-	EXPRESSION TAG	UNP O51345
A	-11	GLY	-	EXPRESSION TAG	UNP O51345
A	-10	THR	-	EXPRESSION TAG	UNP O51345
A	-9	LEU	-	EXPRESSION TAG	UNP O51345
A	-8	GLU	-	EXPRESSION TAG	UNP O51345
A	-7	ALA	-	EXPRESSION TAG	UNP O51345
A	-6	GLN	-	EXPRESSION TAG	UNP O51345
A	-5	THR	-	EXPRESSION TAG	UNP O51345
A	-4	GLN	-	EXPRESSION TAG	UNP O51345
A	-3	GLY	-	EXPRESSION TAG	UNP O51345
A	-2	PRO	-	EXPRESSION TAG	UNP O51345
A	-1	GLY	-	EXPRESSION TAG	UNP O51345
A	0	SER	-	EXPRESSION TAG	UNP O51345
A	1	MET	-	EXPRESSION TAG	UNP O51345
A	2	LEU	-	EXPRESSION TAG	UNP O51345
B	-20	MET	-	EXPRESSION TAG	UNP O51345
B	-19	ALA	-	EXPRESSION TAG	UNP O51345

Continued on next page...

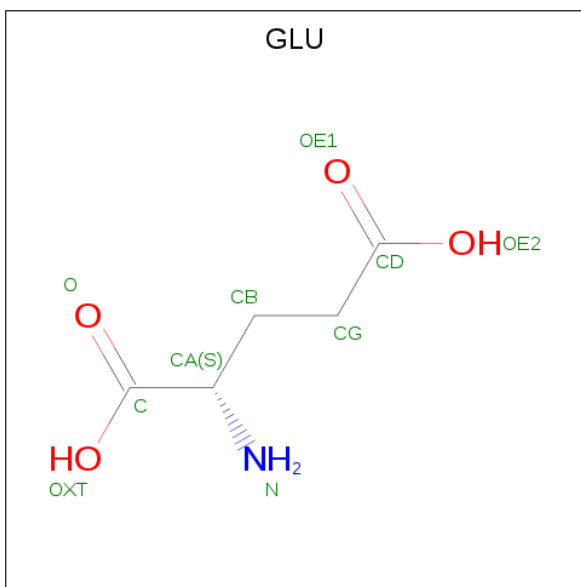
Continued from previous page...

Chain	Residue	Modelled	Actual	Comment	Reference
B	-18	HIS	-	EXPRESSION TAG	UNP O51345
B	-17	HIS	-	EXPRESSION TAG	UNP O51345
B	-16	HIS	-	EXPRESSION TAG	UNP O51345
B	-15	HIS	-	EXPRESSION TAG	UNP O51345
B	-14	HIS	-	EXPRESSION TAG	UNP O51345
B	-13	HIS	-	EXPRESSION TAG	UNP O51345
B	-12	MET	-	EXPRESSION TAG	UNP O51345
B	-11	GLY	-	EXPRESSION TAG	UNP O51345
B	-10	THR	-	EXPRESSION TAG	UNP O51345
B	-9	LEU	-	EXPRESSION TAG	UNP O51345
B	-8	GLU	-	EXPRESSION TAG	UNP O51345
B	-7	ALA	-	EXPRESSION TAG	UNP O51345
B	-6	GLN	-	EXPRESSION TAG	UNP O51345
B	-5	THR	-	EXPRESSION TAG	UNP O51345
B	-4	GLN	-	EXPRESSION TAG	UNP O51345
B	-3	GLY	-	EXPRESSION TAG	UNP O51345
B	-2	PRO	-	EXPRESSION TAG	UNP O51345
B	-1	GLY	-	EXPRESSION TAG	UNP O51345
B	0	SER	-	EXPRESSION TAG	UNP O51345
B	1	MET	-	EXPRESSION TAG	UNP O51345
B	2	LEU	-	EXPRESSION TAG	UNP O51345

- Molecule 2 is ZINC ION (three-letter code: ZN) (formula: Zn).

Mol	Chain	Residues	Atoms		ZeroOcc	AltConf
2	B	1	Total	Zn	0	0
			1	1		
2	A	1	Total	Zn	0	0
			1	1		

- Molecule 3 is GLUTAMIC ACID (three-letter code: GLU) (formula: C₅H₉NO₄).



Mol	Chain	Residues	Atoms				ZeroOcc	AltConf
3	A	1	Total	C	N	O	0	0
			10	5	1	4		
3	B	1	Total	C	N	O	0	0
			10	5	1	4		

- Molecule 4 is CHLORIDE ION (three-letter code: CL) (formula: Cl).

Mol	Chain	Residues	Atoms		ZeroOcc	AltConf
4	A	1	Total	Cl	0	0
			1	1		

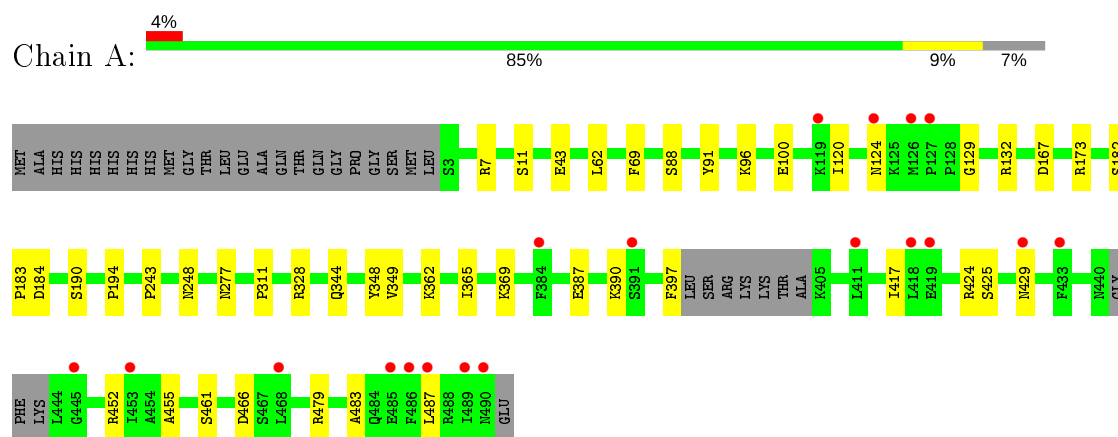
- Molecule 5 is water.

Mol	Chain	Residues	Atoms		ZeroOcc	AltConf
5	A	141	Total	O	0	0
			141	141		
5	B	148	Total	O	0	0
			148	148		

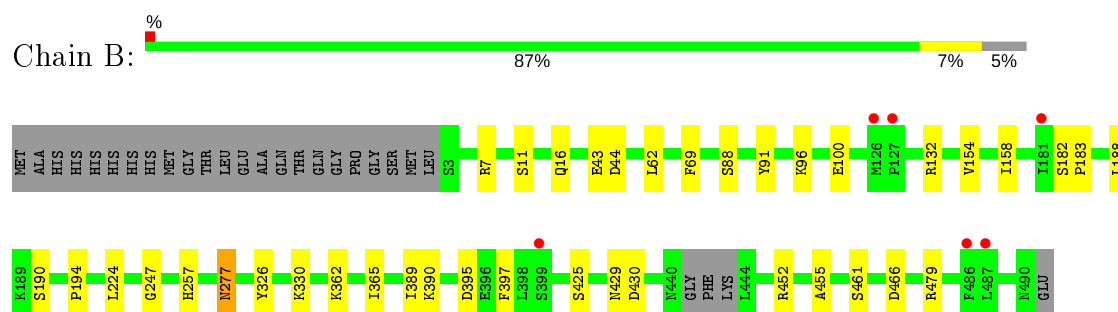
3 Residue-property plots

These plots are drawn for all protein, RNA, DNA and oligosaccharide chains in the entry. The first graphic for a chain summarises the proportions of the various outlier classes displayed in the second graphic. The second graphic shows the sequence view annotated by issues in geometry and electron density. Residues are color-coded according to the number of geometric quality criteria for which they contain at least one outlier: green = 0, yellow = 1, orange = 2 and red = 3 or more. A red dot above a residue indicates a poor fit to the electron density ($RSRZ > 2$). Stretches of 2 or more consecutive residues without any outlier are shown as a green connector. Residues present in the sample, but not in the model, are shown in grey.

• Molecule 1: Glutamate-tRNA ligase



• Molecule 1: Glutamate-tRNA ligase



4 Data and refinement statistics

Property	Value	Source
Space group	P 21 21 21	Depositor
Cell constants a, b, c, α , β , γ	61.46Å 110.31Å 197.88Å 90.00° 90.00° 90.00°	Depositor
Resolution (Å)	48.17 – 2.60 48.18 – 2.60	Depositor EDS
% Data completeness (in resolution range)	96.9 (48.17-2.60) 90.4 (48.18-2.60)	Depositor EDS
R_{merge}	0.11	Depositor
R_{sym}	(Not available)	Depositor
$\langle I/\sigma(I) \rangle$ ¹	3.22 (at 2.61Å)	Xtriage
Refinement program	PHENIX 1.8 _1069	Depositor
R, R_{free}	0.223 , 0.285 0.226 , 0.288	Depositor DCC
R_{free} test set	2073 reflections (5.05%)	wwPDB-VP
Wilson B-factor (Å ²)	31.0	Xtriage
Anisotropy	0.561	Xtriage
Bulk solvent k_{sol} (e/Å ³), B_{sol} (Å ²)	0.29 , 53.5	EDS
L-test for twinning ²	$\langle L \rangle = 0.45$, $\langle L^2 \rangle = 0.27$	Xtriage
Estimated twinning fraction	No twinning to report.	Xtriage
F_o, F_c correlation	0.92	EDS
Total number of atoms	7838	wwPDB-VP
Average B, all atoms (Å ²)	37.0	wwPDB-VP

Xtriage's analysis on translational NCS is as follows: *The analyses of the Patterson function reveals a significant off-origin peak that is 49.89 % of the origin peak, indicating pseudo-translational symmetry. The chance of finding a peak of this or larger height randomly in a structure without pseudo-translational symmetry is equal to 6.9932e-05. The detected translational NCS is most likely also responsible for the elevated intensity ratio.*

¹ Intensities estimated from amplitudes.

² Theoretical values of $\langle |L| \rangle$, $\langle L^2 \rangle$ for acentric reflections are 0.5, 0.333 respectively for untwinned datasets, and 0.375, 0.2 for perfectly twinned datasets.

5 Model quality

5.1 Standard geometry

Bond lengths and bond angles in the following residue types are not validated in this section: ZN, CL

The Z score for a bond length (or angle) is the number of standard deviations the observed value is removed from the expected value. A bond length (or angle) with $|Z| > 5$ is considered an outlier worth inspection. RMSZ is the root-mean-square of all Z scores of the bond lengths (or angles).

Mol	Chain	Bond lengths		Bond angles	
		RMSZ	# Z >5	RMSZ	# Z >5
1	A	0.22	0/3829	0.38	0/5193
1	B	0.21	0/3888	0.38	0/5274
All	All	0.21	0/7717	0.38	0/10467

There are no bond length outliers.

There are no bond angle outliers.

There are no chirality outliers.

There are no planarity outliers.

5.2 Too-close contacts

In the following table, the Non-H and H(model) columns list the number of non-hydrogen atoms and hydrogen atoms in the chain respectively. The H(added) column lists the number of hydrogen atoms added and optimized by MolProbity. The Clashes column lists the number of clashes within the asymmetric unit, whereas Symm-Clashes lists symmetry related clashes.

Mol	Chain	Non-H	H(model)	H(added)	Clashes	Symm-Clashes
1	A	3735	0	3547	23	0
1	B	3791	0	3609	19	0
2	A	1	0	0	0	0
2	B	1	0	0	0	0
3	A	10	0	5	2	0
3	B	10	0	5	2	0
4	A	1	0	0	0	0
5	A	141	0	0	3	0
5	B	148	0	0	3	0
All	All	7838	0	7166	42	0

The all-atom clashscore is defined as the number of clashes found per 1000 atoms (including

hydrogen atoms). The all-atom clashscore for this structure is 3.

All (42) close contacts within the same asymmetric unit are listed below, sorted by their clash magnitude.

Atom-1	Atom-2	Interatomic distance (Å)	Clash overlap (Å)
1:B:425:SER:O	1:B:429:ASN:ND2	2.25	0.66
1:A:11:SER:HG	3:A:502:GLU:N	1.95	0.65
1:A:425:SER:O	1:A:429:ASN:ND2	2.26	0.64
1:B:11:SER:HG	3:B:502:GLU:N	1.96	0.63
1:A:96:LYS:NZ	1:A:100:GLU:OE2	2.28	0.63
1:B:96:LYS:NZ	1:B:100:GLU:OE2	2.29	0.60
1:A:132:ARG:NH1	1:A:184:ASP:OD1	2.40	0.54
1:A:328:ARG:NH1	5:A:623:HOH:O	2.41	0.53
1:A:91:TYR:CD2	1:A:194:PRO:HG3	2.44	0.53
1:A:369:LYS:NZ	5:A:709:HOH:O	2.41	0.52
1:B:277:ASN:OD1	1:B:326:TYR:OH	2.18	0.52
1:A:43:GLU:OE1	3:A:502:GLU:N	2.43	0.52
1:B:330:LYS:NZ	5:B:630:HOH:O	2.40	0.51
1:A:452:ARG:NH1	1:A:461:SER:OG	2.37	0.50
1:A:120:ILE:O	1:A:124:ASN:ND2	2.45	0.50
1:B:91:TYR:CD2	1:B:194:PRO:HG3	2.47	0.50
1:B:455:ALA:O	1:B:479:ARG:NH1	2.42	0.48
1:A:129:GLY:HA3	1:A:183:PRO:HD2	1.95	0.48
1:B:62:LEU:HD13	1:B:69:PHE:HE2	1.78	0.48
1:B:452:ARG:NH1	1:B:461:SER:OG	2.40	0.47
1:A:243:PRO:HB2	1:A:311:PRO:HA	1.96	0.47
1:A:483:ALA:O	1:A:487:LEU:N	2.45	0.47
1:B:16:GLN:NE2	5:B:637:HOH:O	2.45	0.46
1:A:362:LYS:HA	1:A:365:ILE:HD12	1.97	0.46
1:A:455:ALA:O	1:A:479:ARG:NH1	2.43	0.46
1:A:62:LEU:HD13	1:A:69:PHE:HE2	1.80	0.46
1:B:182:SER:HA	1:B:183:PRO:HD3	1.77	0.45
1:B:158:ILE:HD11	1:B:224:LEU:HD13	1.98	0.44
1:A:424:ARG:HG3	1:A:429:ASN:ND2	2.33	0.43
1:A:344:GLN:HA	1:A:349:VAL:O	2.18	0.43
1:A:417:ILE:O	1:A:424:ARG:NH2	2.51	0.43
1:A:348:TYR:OH	1:A:387:GLU:OE1	2.30	0.43
1:B:389:ILE:HD12	1:B:479:ARG:HD3	2.00	0.43
1:B:247:GLY:HA3	1:B:257:HIS:CD2	2.54	0.42
1:B:362:LYS:HA	1:B:365:ILE:HD12	2.02	0.42
1:B:44:ASP:N	1:B:44:ASP:OD2	2.51	0.42
1:A:182:SER:HA	1:A:183:PRO:HD3	1.77	0.42
1:A:167:ASP:OD2	1:A:173:ARG:NH2	2.46	0.41

Continued on next page...

Continued from previous page...

Atom-1	Atom-2	Interatomic distance (Å)	Clash overlap (Å)
1:B:132:ARG:NH2	5:B:679:HOH:O	2.42	0.41
1:A:248:ASN:ND2	5:A:707:HOH:O	2.43	0.41
1:B:154:VAL:HB	1:B:188:LEU:HB3	2.04	0.40
1:B:43:GLU:OE1	3:B:502:GLU:N	2.54	0.40

There are no symmetry-related clashes.

5.3 Torsion angles [i](#)

5.3.1 Protein backbone [i](#)

In the following table, the Percentiles column shows the percent Ramachandran outliers of the chain as a percentile score with respect to all X-ray entries followed by that with respect to entries of similar resolution.

The Analysed column shows the number of residues for which the backbone conformation was analysed, and the total number of residues.

Mol	Chain	Analysed	Favoured	Allowed	Outliers	Percentiles	
1	A	472/512 (92%)	460 (98%)	11 (2%)	1 (0%)	47	71
1	B	481/512 (94%)	468 (97%)	12 (2%)	1 (0%)	47	71
All	All	953/1024 (93%)	928 (97%)	23 (2%)	2 (0%)	47	71

All (2) Ramachandran outliers are listed below:

Mol	Chain	Res	Type
1	A	390	LYS
1	B	390	LYS

5.3.2 Protein sidechains [i](#)

In the following table, the Percentiles column shows the percent sidechain outliers of the chain as a percentile score with respect to all X-ray entries followed by that with respect to entries of similar resolution.

The Analysed column shows the number of residues for which the sidechain conformation was analysed, and the total number of residues.

Continued on next page...

Continued from previous page...

Mol	Chain	Analysed	Rotameric	Outliers	Percentiles
1	A	381/459 (83%)	375 (98%)	6 (2%)	62 82
1	B	386/459 (84%)	378 (98%)	8 (2%)	53 77
All	All	767/918 (84%)	753 (98%)	14 (2%)	59 80

All (14) residues with a non-rotameric sidechain are listed below:

Mol	Chain	Res	Type
1	A	7	ARG
1	A	88	SER
1	A	190	SER
1	A	277	ASN
1	A	397	PHE
1	A	466	ASP
1	B	7	ARG
1	B	88	SER
1	B	190	SER
1	B	277	ASN
1	B	395	ASP
1	B	397	PHE
1	B	430	ASP
1	B	466	ASP

Some sidechains can be flipped to improve hydrogen bonding and reduce clashes. All (1) such sidechains are listed below:

Mol	Chain	Res	Type
1	A	124	ASN

5.3.3 RNA ⓘ

There are no RNA molecules in this entry.

5.4 Non-standard residues in protein, DNA, RNA chains ⓘ

There are no non-standard protein/DNA/RNA residues in this entry.

5.5 Carbohydrates

There are no monosaccharides in this entry.

5.6 Ligand geometry

Of 5 ligands modelled in this entry, 3 are monoatomic - leaving 2 for Mogul analysis.

In the following table, the Counts columns list the number of bonds (or angles) for which Mogul statistics could be retrieved, the number of bonds (or angles) that are observed in the model and the number of bonds (or angles) that are defined in the Chemical Component Dictionary. The Link column lists molecule types, if any, to which the group is linked. The Z score for a bond length (or angle) is the number of standard deviations the observed value is removed from the expected value. A bond length (or angle) with $|Z| > 2$ is considered an outlier worth inspection. RMSZ is the root-mean-square of all Z scores of the bond lengths (or angles).

Mol	Type	Chain	Res	Link	Bond lengths			Bond angles		
					Counts	RMSZ	$\# Z > 2$	Counts	RMSZ	$\# Z > 2$
3	GLU	B	502	-	2,9,9	0.28	0	2,11,11	0.53	0
3	GLU	A	502	-	2,9,9	0.29	0	2,11,11	0.47	0

In the following table, the Chirals column lists the number of chiral outliers, the number of chiral centers analysed, the number of these observed in the model and the number defined in the Chemical Component Dictionary. Similar counts are reported in the Torsion and Rings columns. '-' means no outliers of that kind were identified.

Mol	Type	Chain	Res	Link	Chirals	Torsions	Rings
3	GLU	B	502	-	-	0/3/9/9	-
3	GLU	A	502	-	-	0/3/9/9	-

There are no bond length outliers.

There are no bond angle outliers.

There are no chirality outliers.

There are no torsion outliers.

There are no ring outliers.

2 monomers are involved in 4 short contacts:

Mol	Chain	Res	Type	Clashes	Symm-Clashes
3	B	502	GLU	2	0
3	A	502	GLU	2	0

5.7 Other polymers

There are no such residues in this entry.

5.8 Polymer linkage issues

There are no chain breaks in this entry.

6 Fit of model and data

6.1 Protein, DNA and RNA chains

In the following table, the column labelled ‘#RSRZ> 2’ contains the number (and percentage) of RSRZ outliers, followed by percent RSRZ outliers for the chain as percentile scores relative to all X-ray entries and entries of similar resolution. The OWAB column contains the minimum, median, 95th percentile and maximum values of the occupancy-weighted average B-factor per residue. The column labelled ‘Q< 0.9’ lists the number of (and percentage) of residues with an average occupancy less than 0.9.

Mol	Chain	Analysed	<RSRZ>	#RSRZ>2	OWAB(Å ²)	Q<0.9
1	A	478/512 (93%)	-0.15	19 (3%) 38 31	10, 33, 86, 116	0
1	B	485/512 (94%)	-0.27	6 (1%) 79 76	11, 33, 77, 112	0
All	All	963/1024 (94%)	-0.21	25 (2%) 56 50	10, 33, 83, 116	0

All (25) RSRZ outliers are listed below:

Mol	Chain	Res	Type	RSRZ
1	A	486	PHE	4.8
1	A	127	PRO	4.0
1	A	433	PHE	3.6
1	A	411	LEU	3.5
1	A	126	MET	3.1
1	B	486	PHE	2.9
1	A	119	LYS	2.8
1	A	490	ASN	2.8
1	B	127	PRO	2.8
1	A	429	ASN	2.8
1	A	384	PHE	2.7
1	A	487	LEU	2.5
1	A	453	ILE	2.5
1	A	391	SER	2.4
1	A	489	ILE	2.4
1	A	418	LEU	2.3
1	B	487	LEU	2.3
1	A	485	GLU	2.2
1	A	468	LEU	2.2
1	B	126	MET	2.1
1	A	124	ASN	2.1
1	A	419	GLU	2.1
1	B	181	ILE	2.1
1	B	399	SER	2.0

Continued on next page...

Continued from previous page...

Mol	Chain	Res	Type	RSRZ
1	A	445	GLY	2.0

6.2 Non-standard residues in protein, DNA, RNA chains [i](#)

There are no non-standard protein/DNA/RNA residues in this entry.

6.3 Carbohydrates [i](#)

There are no monosaccharides in this entry.

6.4 Ligands [i](#)

In the following table, the Atoms column lists the number of modelled atoms in the group and the number defined in the chemical component dictionary. The B-factors column lists the minimum, median, 95th percentile and maximum values of B factors of atoms in the group. The column labelled 'Q< 0.9' lists the number of atoms with occupancy less than 0.9.

Mol	Type	Chain	Res	Atoms	RSCC	RSR	B-factors(\AA^2)	Q<0.9
2	ZN	B	501	1/1	0.79	0.16	45,45,45,45	0
2	ZN	A	501	1/1	0.94	0.16	44,44,44,44	0
3	GLU	B	502	10/10	0.95	0.17	26,30,45,47	0
4	CL	A	503	1/1	0.97	0.12	50,50,50,50	0
3	GLU	A	502	10/10	0.97	0.17	15,23,31,34	0

6.5 Other polymers [i](#)

There are no such residues in this entry.