



wwPDB X-ray Structure Validation Summary Report ⓘ

Oct 11, 2021 – 08:23 PM EDT

PDB ID : 2GVD
Title : Complex Of Gs- With The Catalytic Domains Of Mammalian Adenylyl Cy-
clase: Complex With TNP-ATP and Mn
Authors : Mou, T.-C.; Sprang, S.R.
Deposited on : 2006-05-02
Resolution : 2.90 Å(reported)

This is a wwPDB X-ray Structure Validation Summary Report for a publicly released PDB entry.

We welcome your comments at validation@mail.wwpdb.org

A user guide is available at

<https://www.wwpdb.org/validation/2017/XrayValidationReportHelp>

with specific help available everywhere you see the ⓘ symbol.

The following versions of software and data (see [references ⓘ](#)) were used in the production of this report:

MolProbity	:	4.02b-467
Mogul	:	1.8.5 (274361), CSD as541be (2020)
Xtriage (Phenix)	:	1.13
EDS	:	2.23.2
buster-report	:	1.1.7 (2018)
Percentile statistics	:	20191225.v01 (using entries in the PDB archive December 25th 2019)
Refmac	:	5.8.0158
CCP4	:	7.0.044 (Gargrove)
Ideal geometry (proteins)	:	Engh & Huber (2001)
Ideal geometry (DNA, RNA)	:	Parkinson et al. (1996)
Validation Pipeline (wwPDB-VP)	:	2.23.2

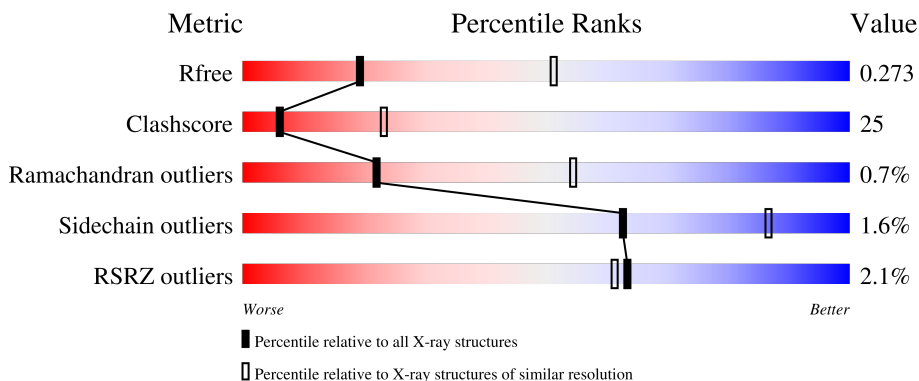
1 Overall quality at a glance

The following experimental techniques were used to determine the structure:

X-RAY DIFFRACTION

The reported resolution of this entry is 2.90 Å.

Percentile scores (ranging between 0-100) for global validation metrics of the entry are shown in the following graphic. The table shows the number of entries on which the scores are based.



Metric	Whole archive (#Entries)	Similar resolution (#Entries, resolution range(Å))
R_{free}	130704	1957 (2.90-2.90)
Clashscore	141614	2172 (2.90-2.90)
Ramachandran outliers	138981	2115 (2.90-2.90)
Sidechain outliers	138945	2117 (2.90-2.90)
RSRZ outliers	127900	1906 (2.90-2.90)

The table below summarises the geometric issues observed across the polymeric chains and their fit to the electron density. The red, orange, yellow and green segments of the lower bar indicate the fraction of residues that contain outliers for ≥ 3 , 2, 1 and 0 types of geometric quality criteria respectively. A grey segment represents the fraction of residues that are not modelled. The numeric value for each fraction is indicated below the corresponding segment, with a dot representing fractions $\leq 5\%$. The upper red bar (where present) indicates the fraction of residues that have poor fit to the electron density. The numeric value is given above the bar.

Mol	Chain	Length	Quality of chain
1	A	225	<div> <div>5%</div> <div>41%</div> <div>41%</div> <div>•</div> <div>16%</div> </div>
2	B	212	<div> <div>52%</div> <div>36%</div> <div>•</div> <div>11%</div> </div>
3	C	394	<div> <div>%</div> <div>48%</div> <div>32%</div> <div>•</div> <div>18%</div> </div>

2 Entry composition

There are 9 unique types of molecules in this entry. The entry contains 5758 atoms, of which 0 are hydrogens and 0 are deuteriums.

In the tables below, the ZeroOcc column contains the number of atoms modelled with zero occupancy, the AltConf column contains the number of residues with at least one atom in alternate conformation and the Trace column contains the number of residues modelled with at most 2 atoms.

- Molecule 1 is a protein called Adenylate cyclase type 5.

Mol	Chain	Residues	Atoms					ZeroOcc	AltConf	Trace
1	A	190	Total	C	N	O	S	0	0	0
			1484	933	260	274	17			

There are 8 discrepancies between the modelled and reference sequences:

Chain	Residue	Modelled	Actual	Comment	Reference
A	476	MET	VAL	engineered mutation	UNP P30803
A	356	MET	-	initiating methionine	UNP P30803
A	357	HIS	-	expression tag	UNP P30803
A	358	HIS	-	expression tag	UNP P30803
A	359	HIS	-	expression tag	UNP P30803
A	360	HIS	-	expression tag	UNP P30803
A	361	HIS	-	expression tag	UNP P30803
A	362	HIS	-	expression tag	UNP P30803

- Molecule 2 is a protein called Adenylate cyclase type 2.

Mol	Chain	Residues	Atoms					ZeroOcc	AltConf	Trace
2	B	189	Total	C	N	O	S	0	0	0
			1467	936	242	279	10			

- Molecule 3 is a protein called Guanine nucleotide-binding protein G(s), alpha subunit.

Mol	Chain	Residues	Atoms					ZeroOcc	AltConf	Trace
3	C	322	Total	C	N	O	S	0	0	0
			2635	1673	456	494	12			

- Molecule 4 is MANGANESE (II) ION (three-letter code: MN) (formula: Mn).

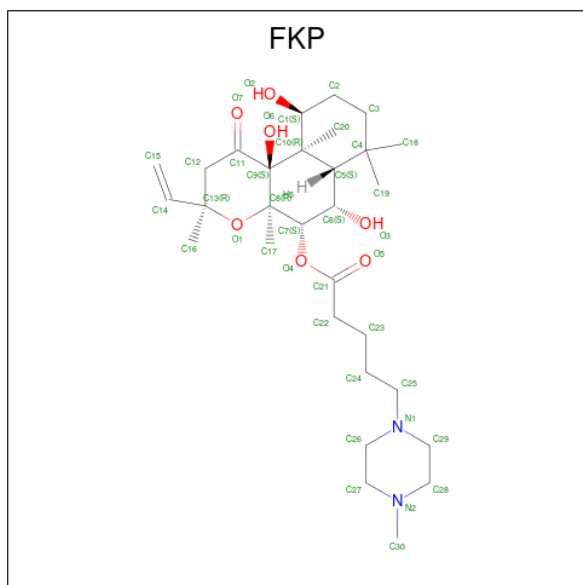
Mol	Chain	Residues	Atoms		ZeroOcc	AltConf
4	A	2	Total	Mn	0	0
			2	2		

Continued on next page...

Continued from previous page...

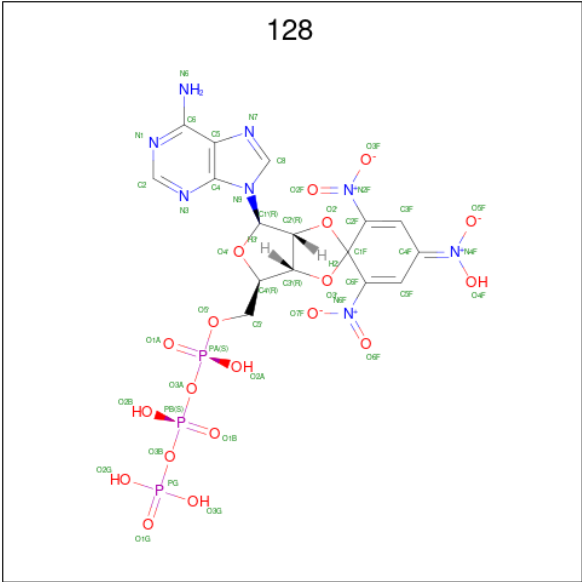
Mol	Chain	Residues	Atoms		ZeroOcc	AltConf
4	C	1	Total	Mn	0	0
			1	1		

- Molecule 5 is METHYLPIPERAZINOFORSKOLIN (three-letter code: FKP) (formula: $C_{30}H_{50}N_2O_7$).



Mol	Chain	Residues	Atoms				ZeroOcc	AltConf
5	A	1	Total	C	N	O	0	0
			39	30	2	7		

- Molecule 6 is SPIRO(2,4,6-TRINITROBENZENE[1,2A]-2O',3O'-METHYLENE-ADENIN E-TRIPHOSPHATE (three-letter code: 128) (formula: $C_{16}H_{17}N_8O_{19}P_3$).

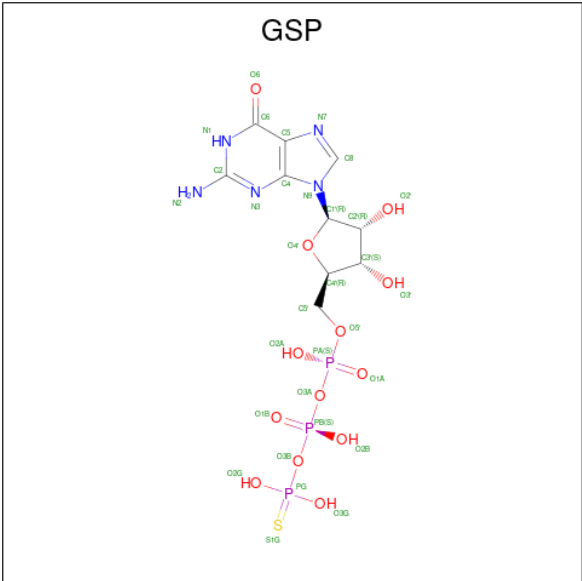


Mol	Chain	Residues	Atoms					ZeroOcc	AltConf
6	A	1	Total	C	N	O	P	0	0
			46	16	8	19	3		

- Molecule 7 is CHLORIDE ION (three-letter code: CL) (formula: Cl).

Mol	Chain	Residues	Atoms		ZeroOcc	AltConf
7	C	1	Total	Cl	0	0
			1	1		

- Molecule 8 is 5'-GUANOSINE-DIPHOSPHATE-MONOTHIOPHOSPHATE (three-letter code: GSP) (formula: C₁₀H₁₆N₅O₁₃P₃S).



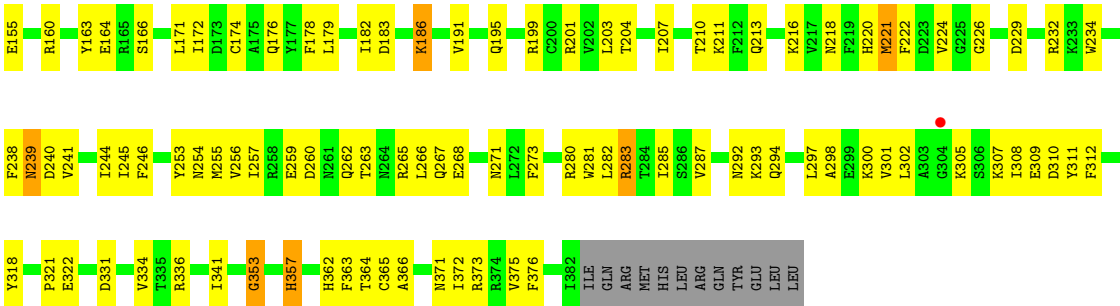
Mol	Chain	Residues	Atoms						ZeroOcc	AltConf
8	C	1	Total	C	N	O	P	S	0	0
			32	10	5	13	3	1		

- Molecule 9 is water.

Mol	Chain	Residues	Atoms		ZeroOcc	AltConf
9	A	11	Total	O	0	0
			11	11		
9	B	15	Total	O	0	0
			15	15		
9	C	25	Total	O	0	0
			25	25		

- Molecule 1: Adenylate cyclase type 5





4 Data and refinement statistics

Property	Value	Source
Space group	P 21 21 2	Depositor
Cell constants a, b, c, α , β , γ	118.20Å 133.40Å 70.60Å 90.00° 90.00° 90.00°	Depositor
Resolution (Å)	14.96 – 2.90 45.32 – 2.80	Depositor EDS
% Data completeness (in resolution range)	82.5 (14.96-2.90) 73.3 (45.32-2.80)	Depositor EDS
R_{merge}	(Not available)	Depositor
R_{sym}	(Not available)	Depositor
$\langle I/\sigma(I) \rangle$ ¹	1.92 (at 2.81Å)	Xtriage
Refinement program	CNS 1.1	Depositor
R, R_{free}	0.245 , 0.279 0.237 , 0.273	Depositor DCC
R_{free} test set	925 reflections (4.12%)	wwPDB-VP
Wilson B-factor (Å ²)	32.0	Xtriage
Anisotropy	0.900	Xtriage
Bulk solvent k_{sol} (e/Å ³), B_{sol} (Å ²)	0.33 , 50.4	EDS
L-test for twinning ²	$\langle L \rangle = 0.46$, $\langle L^2 \rangle = 0.29$	Xtriage
Estimated twinning fraction	No twinning to report.	Xtriage
F_o, F_c correlation	0.88	EDS
Total number of atoms	5758	wwPDB-VP
Average B, all atoms (Å ²)	44.0	wwPDB-VP

Xtriage's analysis on translational NCS is as follows: *The largest off-origin peak in the Patterson function is 4.57% of the height of the origin peak. No significant pseudotranslation is detected.*

¹Intensities estimated from amplitudes.

²Theoretical values of $\langle |L| \rangle$, $\langle L^2 \rangle$ for acentric reflections are 0.5, 0.333 respectively for untwinned datasets, and 0.375, 0.2 for perfectly twinned datasets.

5 Model quality [i](#)

5.1 Standard geometry [i](#)

Bond lengths and bond angles in the following residue types are not validated in this section: 128, GSP, CL, MN, FKP

The Z score for a bond length (or angle) is the number of standard deviations the observed value is removed from the expected value. A bond length (or angle) with $|Z| > 5$ is considered an outlier worth inspection. RMSZ is the root-mean-square of all Z scores of the bond lengths (or angles).

Mol	Chain	Bond lengths		Bond angles	
		RMSZ	# Z >5	RMSZ	# Z >5
1	A	0.40	0/1512	0.49	0/2038
2	B	0.47	0/1492	0.51	0/2014
3	C	0.46	0/2691	0.51	0/3643
All	All	0.44	0/5695	0.51	0/7695

There are no bond length outliers.

There are no bond angle outliers.

There are no chirality outliers.

There are no planarity outliers.

5.2 Too-close contacts [i](#)

In the following table, the Non-H and H(model) columns list the number of non-hydrogen atoms and hydrogen atoms in the chain respectively. The H(added) column lists the number of hydrogen atoms added and optimized by MolProbity. The Clashes column lists the number of clashes within the asymmetric unit, whereas Symm-Clashes lists symmetry-related clashes.

Mol	Chain	Non-H	H(model)	H(added)	Clashes	Symm-Clashes
1	A	1484	0	1452	95	0
2	B	1467	0	1470	64	0
3	C	2635	0	2582	123	0
4	A	2	0	0	0	0
4	C	1	0	0	0	0
5	A	39	0	50	4	0
6	A	46	0	13	3	0
7	C	1	0	0	0	0
8	C	32	0	12	3	0
9	A	11	0	0	3	0

Continued on next page...

Continued from previous page...

Mol	Chain	Non-H	H(model)	H(added)	Clashes	Symm-Clashes
9	B	15	0	0	2	0
9	C	25	0	0	4	0
All	All	5758	0	5579	278	0

The all-atom clashscore is defined as the number of clashes found per 1000 atoms (including hydrogen atoms). The all-atom clashscore for this structure is 25.

The worst 5 of 278 close contacts within the same asymmetric unit are listed below, sorted by their clash magnitude.

Atom-1	Atom-2	Interatomic distance (Å)	Clash overlap (Å)
1:A:503:GLN:HA	9:A:45:HOH:O	1.50	1.10
1:A:508:SER:HB3	1:A:511:VAL:HG23	1.51	0.93
1:A:541:GLU:HG3	1:A:565:LEU:HD12	1.55	0.88
3:C:207:ILE:HG12	3:C:224:VAL:HG12	1.55	0.88
1:A:452:ARG:HG2	1:A:454:ASP:H	1.41	0.85

There are no symmetry-related clashes.

5.3 Torsion angles [i](#)

5.3.1 Protein backbone [i](#)

In the following table, the Percentiles column shows the percent Ramachandran outliers of the chain as a percentile score with respect to all X-ray entries followed by that with respect to entries of similar resolution.

The Analysed column shows the number of residues for which the backbone conformation was analysed, and the total number of residues.

Mol	Chain	Analysed	Favoured	Allowed	Outliers	Percentiles	
1	A	188/225 (84%)	170 (90%)	15 (8%)	3 (2%)	9	32
2	B	185/212 (87%)	174 (94%)	10 (5%)	1 (0%)	29	61
3	C	318/394 (81%)	285 (90%)	32 (10%)	1 (0%)	41	71
All	All	691/831 (83%)	629 (91%)	57 (8%)	5 (1%)	22	54

All (5) Ramachandran outliers are listed below:

Mol	Chain	Res	Type
1	A	377	MET

Continued on next page...

Continued from previous page...

Mol	Chain	Res	Type
1	A	378	MET
1	A	478	GLY
3	C	353	GLY
2	B	1013	GLN

5.3.2 Protein sidechains ⓘ

In the following table, the Percentiles column shows the percent sidechain outliers of the chain as a percentile score with respect to all X-ray entries followed by that with respect to entries of similar resolution.

The Analysed column shows the number of residues for which the sidechain conformation was analysed, and the total number of residues.

Mol	Chain	Analysed	Rotameric	Outliers	Percentiles	
1	A	159/189 (84%)	157 (99%)	2 (1%)	69	90
2	B	162/184 (88%)	159 (98%)	3 (2%)	57	84
3	C	290/351 (83%)	285 (98%)	5 (2%)	60	86
All	All	611/724 (84%)	601 (98%)	10 (2%)	62	86

5 of 10 residues with a non-rotameric sidechain are listed below:

Mol	Chain	Res	Type
3	C	239	ASN
3	C	283	ARG
3	C	357	HIS
2	B	921	ASP
2	B	1062	ILE

Sometimes sidechains can be flipped to improve hydrogen bonding and reduce clashes. 5 of 23 such sidechains are listed below:

Mol	Chain	Res	Type
2	B	1076	ASN
3	C	218	ASN
3	C	98	ASN
3	C	220	HIS
2	B	879	HIS

5.3.3 RNA ⓘ

There are no RNA molecules in this entry.

5.4 Non-standard residues in protein, DNA, RNA chains ⓘ

There are no non-standard protein/DNA/RNA residues in this entry.

5.5 Carbohydrates ⓘ

There are no monosaccharides in this entry.

5.6 Ligand geometry ⓘ

Of 7 ligands modelled in this entry, 4 are monoatomic - leaving 3 for Mogul analysis.

In the following table, the Counts columns list the number of bonds (or angles) for which Mogul statistics could be retrieved, the number of bonds (or angles) that are observed in the model and the number of bonds (or angles) that are defined in the Chemical Component Dictionary. The Link column lists molecule types, if any, to which the group is linked. The Z score for a bond length (or angle) is the number of standard deviations the observed value is removed from the expected value. A bond length (or angle) with $|Z| > 2$ is considered an outlier worth inspection. RMSZ is the root-mean-square of all Z scores of the bond lengths (or angles).

Mol	Type	Chain	Res	Link	Bond lengths			Bond angles		
					Counts	RMSZ	$\# Z > 2$	Counts	RMSZ	$\# Z > 2$
5	FKP	A	583	-	39,42,42	2.44	16 (41%)	49,68,68	1.82	9 (18%)
6	128	A	584	4	33,50,50	3.92	15 (45%)	36,80,80	2.51	12 (33%)
8	GSP	C	395	4	26,34,34	2.46	8 (30%)	28,54,54	2.76	12 (42%)

In the following table, the Chirals column lists the number of chiral outliers, the number of chiral centers analysed, the number of these observed in the model and the number defined in the Chemical Component Dictionary. Similar counts are reported in the Torsion and Rings columns. '-' means no outliers of that kind were identified.

Mol	Type	Chain	Res	Link	Chirals	Torsions	Rings
5	FKP	A	583	-	-	12/14/97/97	0/4/4/4
6	128	A	584	4	-	2/22/80/80	0/5/5/5
8	GSP	C	395	4	-	2/17/38/38	0/3/3/3

The worst 5 of 39 bond length outliers are listed below:

Mol	Chain	Res	Type	Atoms	Z	Observed(Å)	Ideal(Å)
6	A	584	128	PB-O2B	-10.92	1.04	1.55
6	A	584	128	O2'-C1F	9.77	1.54	1.41
6	A	584	128	O3'-C1F	8.73	1.53	1.41
6	A	584	128	PB-O1B	-8.60	1.20	1.50
8	C	395	GSP	PG-O2G	-8.20	1.28	1.54

The worst 5 of 33 bond angle outliers are listed below:

Mol	Chain	Res	Type	Atoms	Z	Observed(°)	Ideal(°)
8	C	395	GSP	C5-C6-N1	-9.95	109.82	123.43
8	C	395	GSP	C6-N1-C2	6.82	126.77	115.93
6	A	584	128	O3'-C1F-C6F	-6.74	101.25	110.47
5	A	583	FKP	C10-C5-C4	-6.09	111.39	116.46
5	A	583	FKP	C19-C4-C18	-5.16	100.28	107.89

There are no chirality outliers.

5 of 16 torsion outliers are listed below:

Mol	Chain	Res	Type	Atoms
5	A	583	FKP	C6-C7-O4-C21
5	A	583	FKP	C8-C7-O4-C21
5	A	583	FKP	O1-C13-C14-C15
5	A	583	FKP	C12-C13-C14-C15
5	A	583	FKP	C16-C13-C14-C15

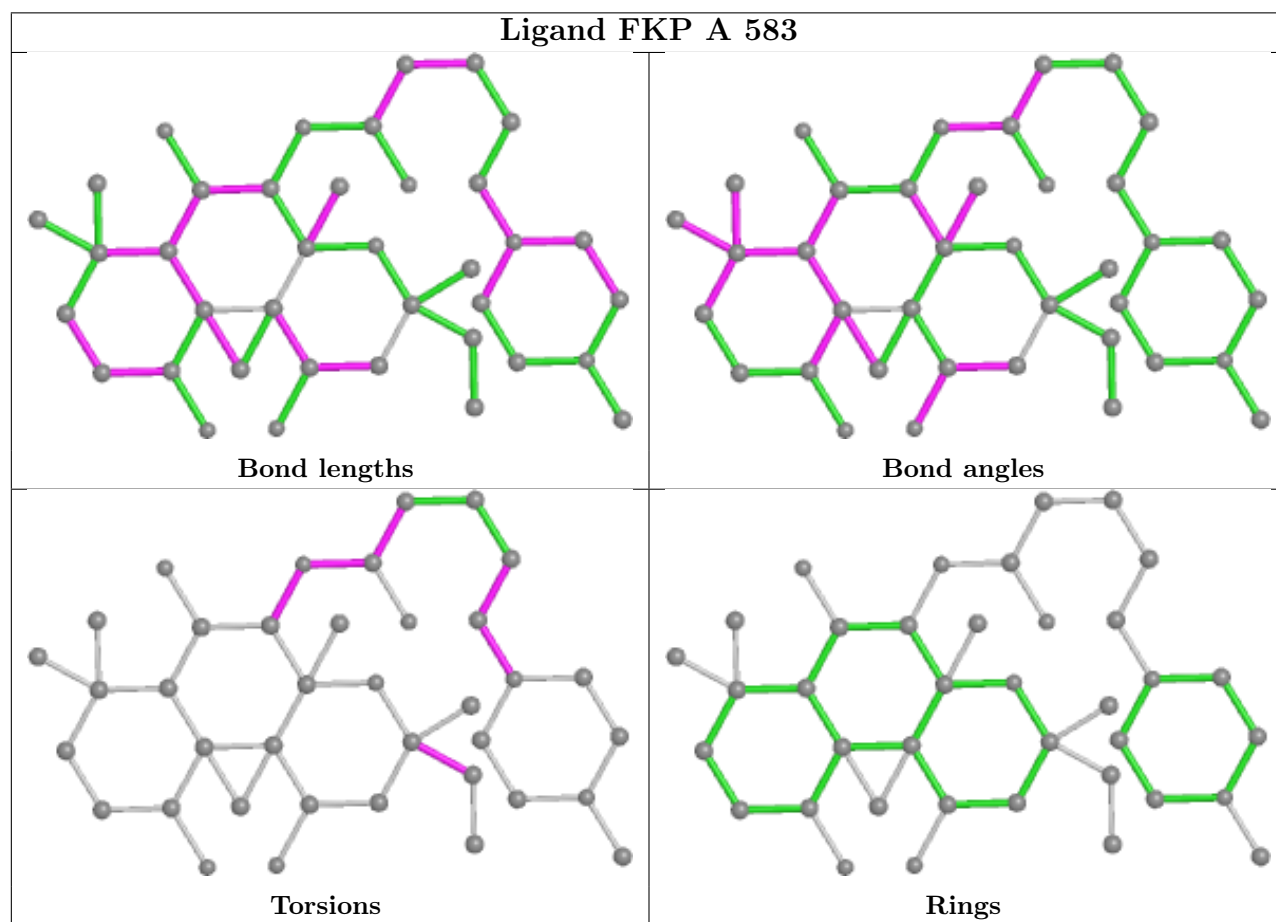
There are no ring outliers.

3 monomers are involved in 10 short contacts:

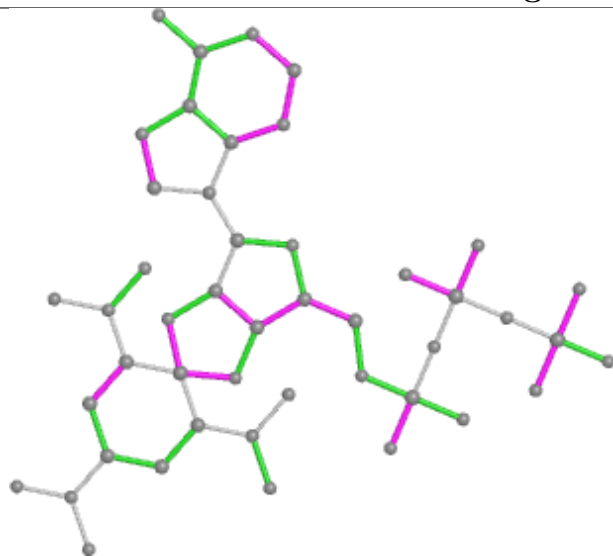
Mol	Chain	Res	Type	Clashes	Symm-Clashes
5	A	583	FKP	4	0
6	A	584	128	3	0
8	C	395	GSP	3	0

The following is a two-dimensional graphical depiction of Mogul quality analysis of bond lengths, bond angles, torsion angles, and ring geometry for all instances of the Ligand of Interest. In addition, ligands with molecular weight > 250 and outliers as shown on the validation Tables will also be included. For torsion angles, if less than 5% of the Mogul distribution of torsion angles is within 10 degrees of the torsion angle in question, then that torsion angle is considered an outlier. Any bond that is central to one or more torsion angles identified as an outlier by Mogul will be highlighted in the graph. For rings, the root-mean-square deviation (RMSD) between the ring in question and similar rings identified by Mogul is calculated over all ring torsion angles. If the average RMSD is greater than 60 degrees and the minimal RMSD between the ring in question and any Mogul-identified rings is also greater than 60 degrees, then that ring is considered an outlier.

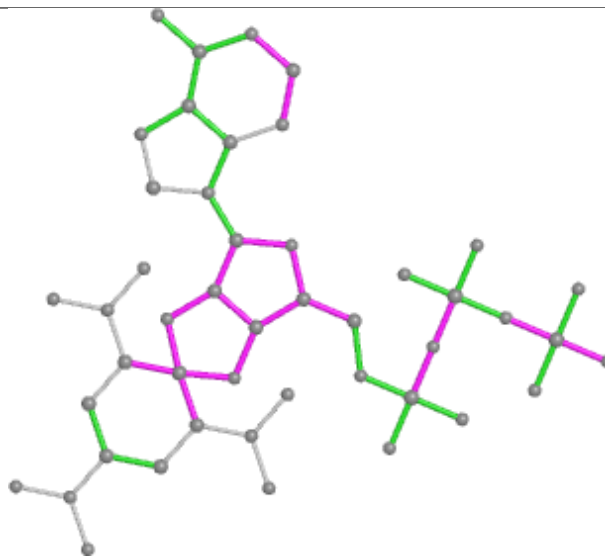
The outliers are highlighted in purple. The color gray indicates Mogul did not find sufficient equivalents in the CSD to analyse the geometry.



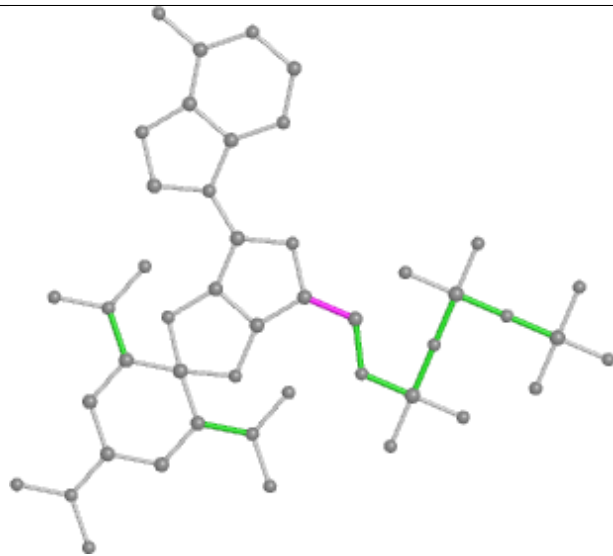
Ligand 128 A 584



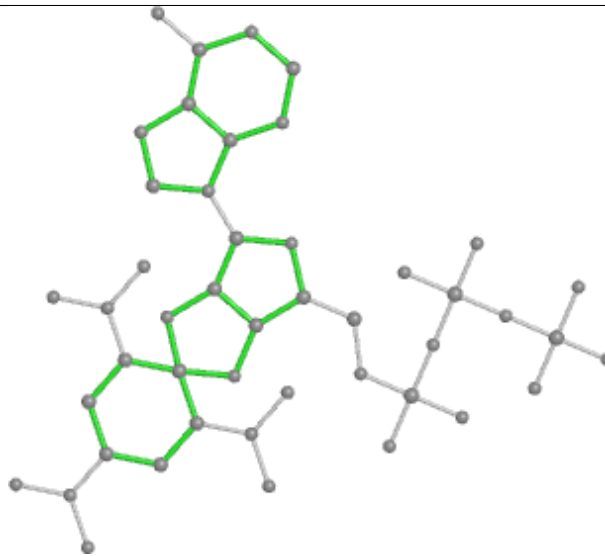
Bond lengths



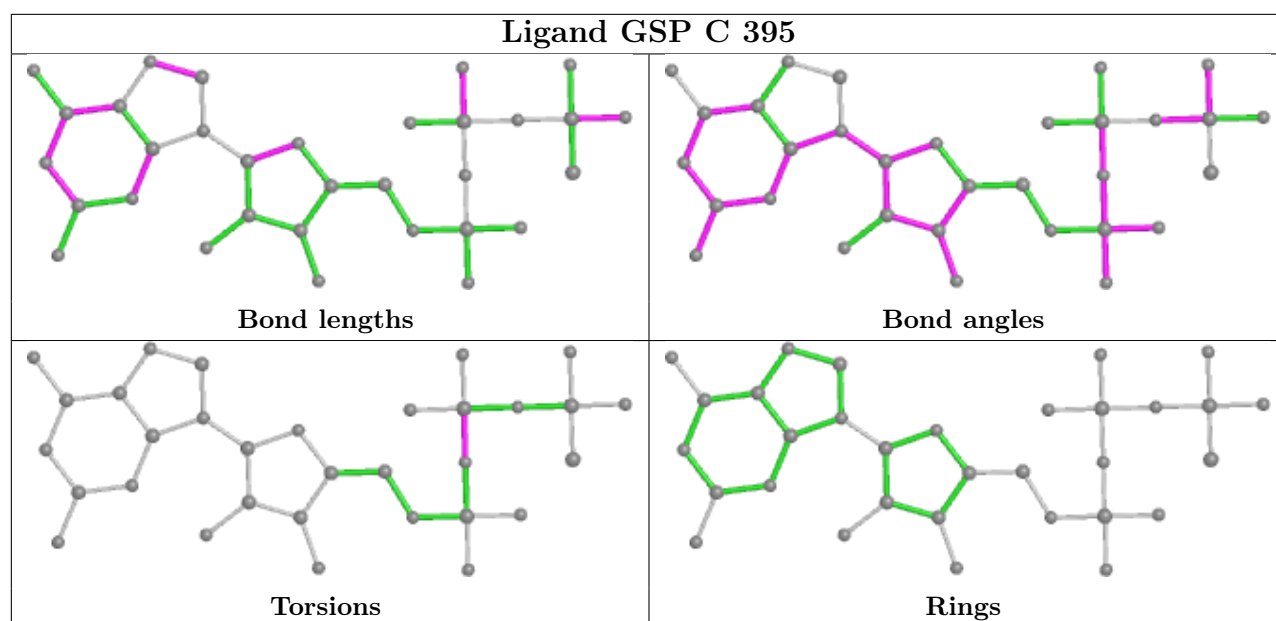
Bond angles



Torsions



Rings



5.7 Other polymers [i](#)

There are no such residues in this entry.

5.8 Polymer linkage issues [i](#)

There are no chain breaks in this entry.

6 Fit of model and data [i](#)

6.1 Protein, DNA and RNA chains [i](#)

In the following table, the column labelled ‘#RSRZ> 2’ contains the number (and percentage) of RSRZ outliers, followed by percent RSRZ outliers for the chain as percentile scores relative to all X-ray entries and entries of similar resolution. The OWAB column contains the minimum, median, 95th percentile and maximum values of the occupancy-weighted average B-factor per residue. The column labelled ‘Q< 0.9’ lists the number of (and percentage) of residues with an average occupancy less than 0.9.

Mol	Chain	Analysed	<RSRZ>	#RSRZ>2	OWAB(Å ²)	Q<0.9
1	A	190/225 (84%)	0.28	12 (6%) 20 16	21, 56, 102, 127	0
2	B	189/212 (89%)	-0.19	1 (0%) 91 91	13, 35, 68, 106	0
3	C	322/394 (81%)	-0.20	2 (0%) 89 89	15, 38, 75, 95	0
All	All	701/831 (84%)	-0.06	15 (2%) 63 61	13, 42, 81, 127	0

The worst 5 of 15 RSRZ outliers are listed below:

Mol	Chain	Res	Type	RSRZ
1	A	476	MET	4.8
1	A	474	ARG	4.5
1	A	479	VAL	4.0
1	A	475	GLU	3.6
1	A	477	THR	3.1

6.2 Non-standard residues in protein, DNA, RNA chains [i](#)

There are no non-standard protein/DNA/RNA residues in this entry.

6.3 Carbohydrates [i](#)

There are no monosaccharides in this entry.

6.4 Ligands [i](#)

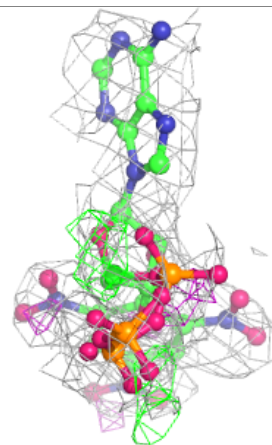
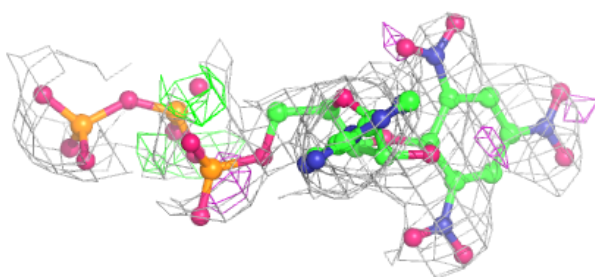
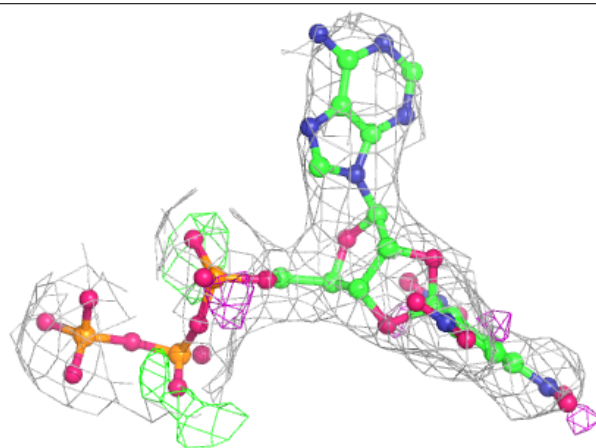
In the following table, the Atoms column lists the number of modelled atoms in the group and the number defined in the chemical component dictionary. The B-factors column lists the minimum, median, 95th percentile and maximum values of B factors of atoms in the group. The column labelled ‘Q< 0.9’ lists the number of atoms with occupancy less than 0.9.

Mol	Type	Chain	Res	Atoms	RSCC	RSR	B-factors(\AA^2)	Q<0.9
6	128	A	584	46/46	0.88	0.25	60,70,87,92	0
4	MN	C	396	1/1	0.91	0.12	40,40,40,40	0
5	FKP	A	583	39/39	0.92	0.26	18,26,77,78	0
4	MN	A	581	1/1	0.95	0.17	56,56,56,56	0
7	CL	C	397	1/1	0.96	0.07	25,25,25,25	0
8	GSP	C	395	32/32	0.97	0.16	11,26,59,61	0
4	MN	A	582	1/1	0.99	0.15	20,20,20,20	0

The following is a graphical depiction of the model fit to experimental electron density of all instances of the Ligand of Interest. In addition, ligands with molecular weight > 250 and outliers as shown on the geometry validation Tables will also be included. Each fit is shown from different orientation to approximate a three-dimensional view.

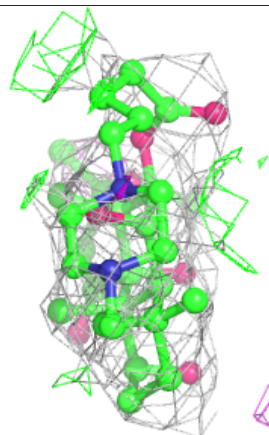
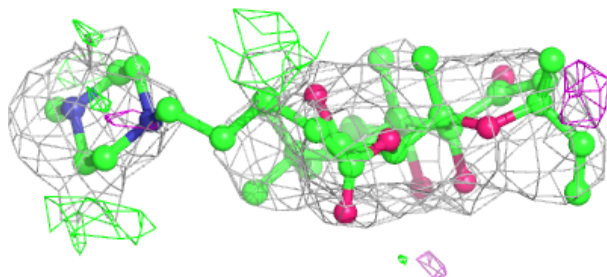
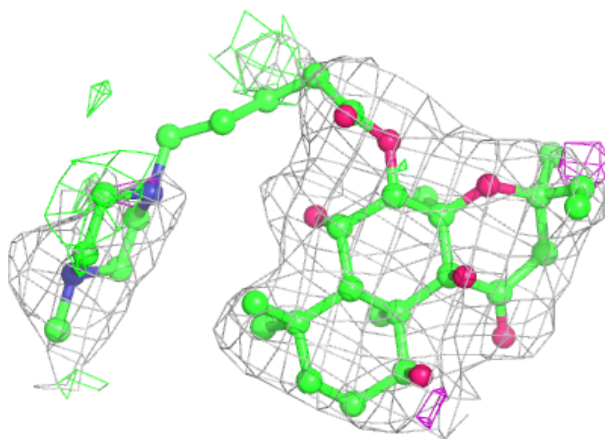
Electron density around 128 A 584:

2mF_o-DF_c (at 0.7 rmsd) in gray
mF_o-DF_c (at 3 rmsd) in purple (negative)
and green (positive)

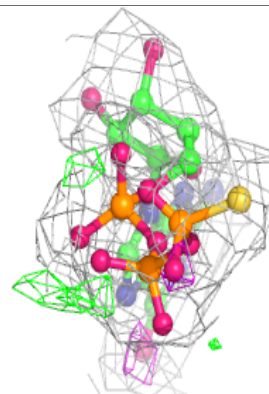
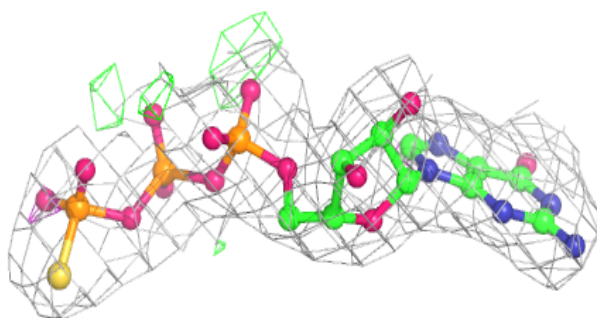
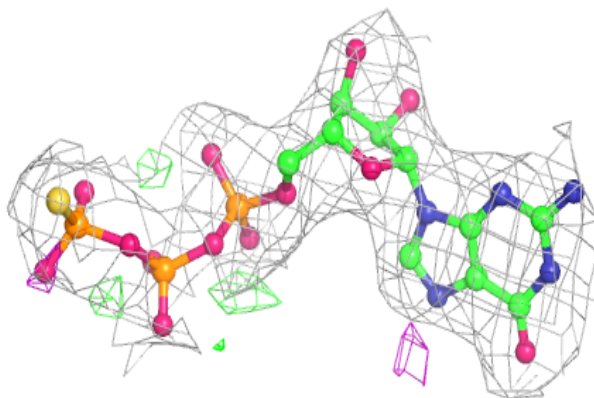


Electron density around FKP A 583:

$2mF_o-DF_c$ (at 0.7 rmsd) in gray
 mF_o-DF_c (at 3 rmsd) in purple (negative)
and green (positive)

**Electron density around GSP C 395:**

$2mF_o-DF_c$ (at 0.7 rmsd) in gray
 mF_o-DF_c (at 3 rmsd) in purple (negative)
and green (positive)



6.5 Other polymers [i](#)

There are no such residues in this entry.