



# Full wwPDB X-ray Structure Validation Report ⓘ

Aug 20, 2020 – 04:16 PM BST

PDB ID : 5GVL  
Title : Plasmodium vivax SHMT bound with PLP-glycine and GS182  
Authors : Chitnumsub, P.; Jaruwat, A.; Leartsakulpanich, U.; Schwertz, G.  
Deposited on : 2016-09-06  
Resolution : 2.50 Å(reported)

This is a Full wwPDB X-ray Structure Validation Report for a publicly released PDB entry.

We welcome your comments at [validation@mail.wwpdb.org](mailto:validation@mail.wwpdb.org)

A user guide is available at

<https://www.wwpdb.org/validation/2017/XrayValidationReportHelp>

with specific help available everywhere you see the ⓘ symbol.

---

The following versions of software and data (see [references ⓘ](#)) were used in the production of this report:

MolProbity : 4.02b-467  
Mogul : 1.8.5 (274361), CSD as541be (2020)  
Xtriage (Phenix) : 1.13  
EDS : 2.13.1  
buster-report : 1.1.7 (2018)  
Percentile statistics : 20191225.v01 (using entries in the PDB archive December 25th 2019)  
Refmac : 5.8.0158  
CCP4 : 7.0.044 (Gargrove)  
Ideal geometry (proteins) : Engh & Huber (2001)  
Ideal geometry (DNA, RNA) : Parkinson et al. (1996)  
Validation Pipeline (wwPDB-VP) : 2.13.1

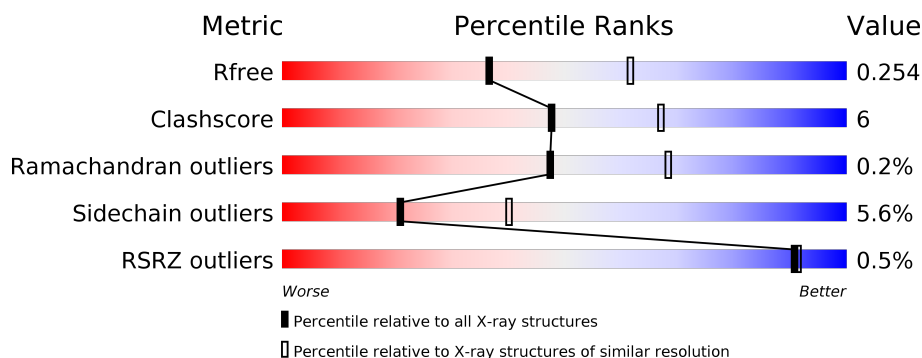
# 1 Overall quality at a glance

The following experimental techniques were used to determine the structure:

## *X-RAY DIFFRACTION*

The reported resolution of this entry is 2.50 Å.

Percentile scores (ranging between 0-100) for global validation metrics of the entry are shown in the following graphic. The table shows the number of entries on which the scores are based.



Metric	Whole archive (#Entries)	Similar resolution (#Entries, resolution range(Å))
$R_{free}$	130704	4661 (2.50-2.50)
Clashscore	141614	5346 (2.50-2.50)
Ramachandran outliers	138981	5231 (2.50-2.50)
Sidechain outliers	138945	5233 (2.50-2.50)
RSRZ outliers	127900	4559 (2.50-2.50)

The table below summarises the geometric issues observed across the polymeric chains and their fit to the electron density. The red, orange, yellow and green segments on the lower bar indicate the fraction of residues that contain outliers for  $\geq 3$ , 2, 1 and 0 types of geometric quality criteria respectively. A grey segment represents the fraction of residues that are not modelled. The numeric value for each fraction is indicated below the corresponding segment, with a dot representing fractions  $\leq 5\%$ . The upper red bar (where present) indicates the fraction of residues that have poor fit to the electron density. The numeric value is given above the bar.

Mol	Chain	Length	Quality of chain
1	A	442	<div> <div>%</div> <div> <div></div> <div>83%</div> <div>15%</div> <div>.</div> </div> </div>
1	B	442	<div> <div>83%</div> <div>16%</div> <div>.</div> </div>
1	C	442	<div> <div>83%</div> <div>16%</div> <div>.</div> </div>

## 2 Entry composition [i](#)

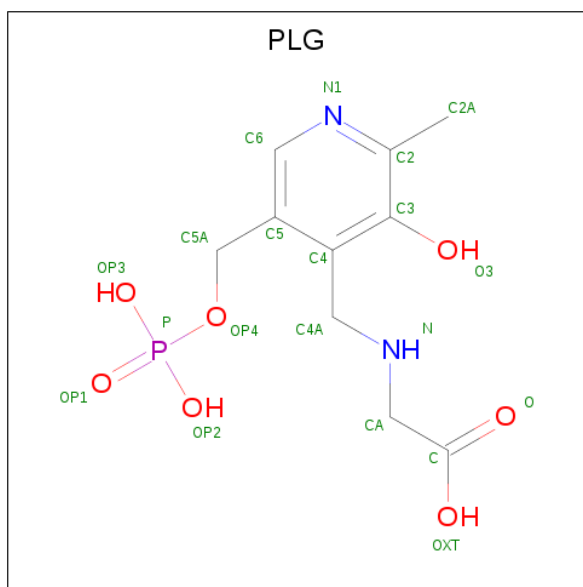
There are 5 unique types of molecules in this entry. The entry contains 10677 atoms, of which 0 are hydrogens and 0 are deuteriums.

In the tables below, the ZeroOcc column contains the number of atoms modelled with zero occupancy, the AltConf column contains the number of residues with at least one atom in alternate conformation and the Trace column contains the number of residues modelled with at most 2 atoms.

- Molecule 1 is a protein called Serine hydroxymethyltransferase, putative.

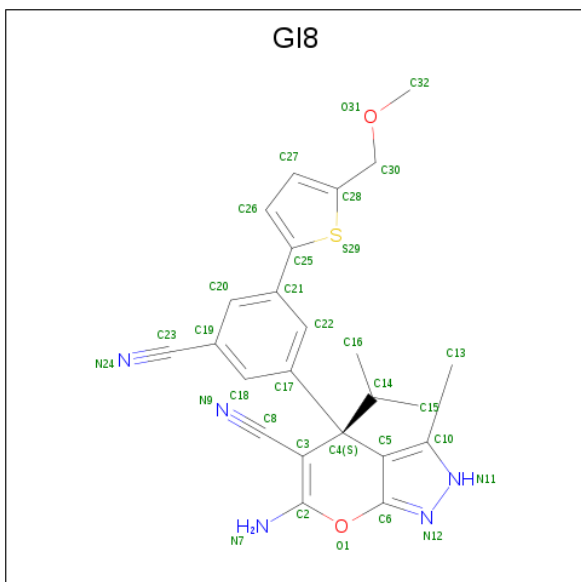
Mol	Chain	Residues	Atoms					ZeroOcc	AltConf	Trace
1	A	442	Total	C	N	O	S	0	0	0
			3458	2186	600	655	17			
1	B	442	Total	C	N	O	S	0	0	0
			3458	2186	600	655	17			
1	C	442	Total	C	N	O	S	0	0	0
			3458	2186	600	655	17			

- Molecule 2 is N-GLYCINE-[3-HYDROXY-2-METHYL-5-PHOSPHONOOXYMETHYL-PYRIDIN-4-YL-METHANE] (three-letter code: PLG) (formula: C<sub>10</sub>H<sub>15</sub>N<sub>2</sub>O<sub>7</sub>P).



Mol	Chain	Residues	Atoms					ZeroOcc	AltConf
2	A	1	Total	C	N	O	P	0	0
			20	10	2	7	1		
2	B	1	Total	C	N	O	P	0	0
			20	10	2	7	1		
2	C	1	Total	C	N	O	P	0	0
			20	10	2	7	1		

- Molecule 3 is (4 {S})-6-azanyl-4-[3-cyano-5-[5-(methoxymethyl)thiophen-2-yl]phenyl]-3-methyl-4-propan-2-yl-2 {H}-pyrano[2,3-c]pyrazole-5-carbonitrile (three-letter code: GI8) (formula: C<sub>24</sub>H<sub>23</sub>N<sub>5</sub>O<sub>2</sub>S).



Mol	Chain	Residues	Atoms					ZeroOcc	AltConf
3	A	1	Total	C	N	O	S	0	0
			32	24	5	2	1		
3	B	1	Total	C	N	O	S	0	0
			32	24	5	2	1		
3	C	1	Total	C	N	O	S	0	0
			32	24	5	2	1		

- Molecule 4 is CHLORIDE ION (three-letter code: CL) (formula: Cl).

Mol	Chain	Residues	Atoms		ZeroOcc	AltConf
4	A	1	Total	Cl	0	0
			1	1		
4	C	1	Total	Cl	0	0
			1	1		

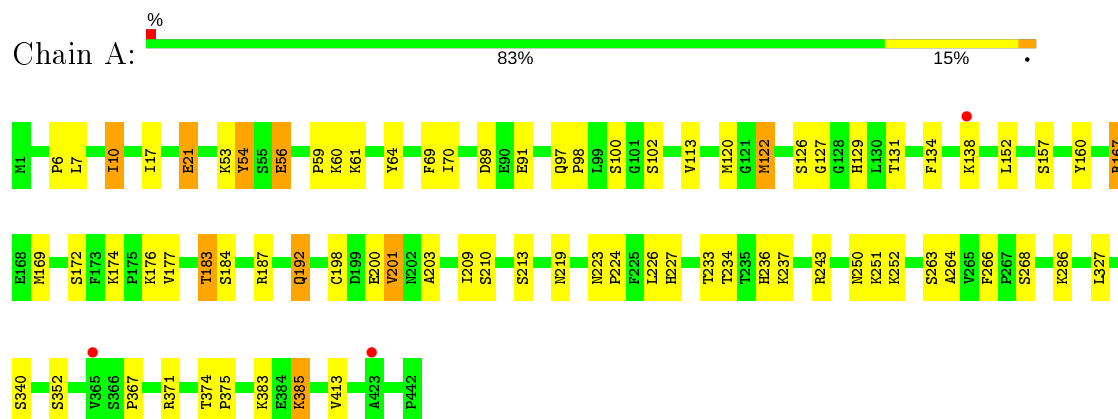
- Molecule 5 is water.

Mol	Chain	Residues	Atoms		ZeroOcc	AltConf
5	A	49	Total	O	0	0
			49	49		
5	B	54	Total	O	0	0
			54	54		
5	C	42	Total	O	0	0
			42	42		

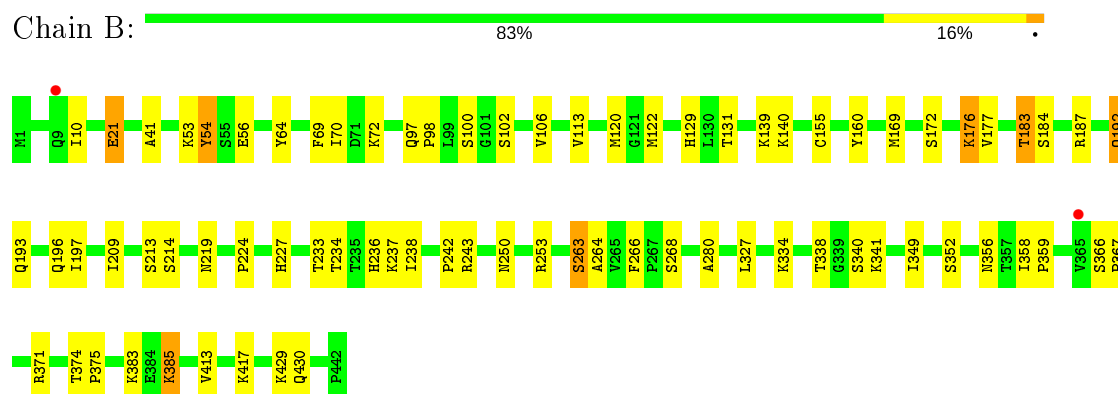
### 3 Residue-property plots

These plots are drawn for all protein, RNA, DNA and oligosaccharide chains in the entry. The first graphic for a chain summarises the proportions of the various outlier classes displayed in the second graphic. The second graphic shows the sequence view annotated by issues in geometry and electron density. Residues are color-coded according to the number of geometric quality criteria for which they contain at least one outlier: green = 0, yellow = 1, orange = 2 and red = 3 or more. A red dot above a residue indicates a poor fit to the electron density ( $RSRZ > 2$ ). Stretches of 2 or more consecutive residues without any outlier are shown as a green connector. Residues present in the sample, but not in the model, are shown in grey.

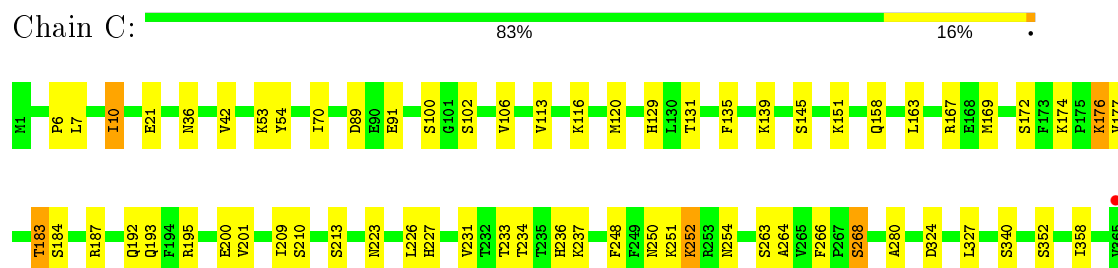
- Molecule 1: Serine hydroxymethyltransferase, putative

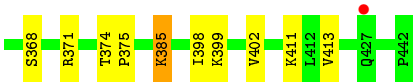


- Molecule 1: Serine hydroxymethyltransferase, putative



- Molecule 1: Serine hydroxymethyltransferase, putative





## 4 Data and refinement statistics

Property	Value	Source
Space group	C 1 2 1	Depositor
Cell constants a, b, c, $\alpha$ , $\beta$ , $\gamma$	101.26Å 58.51Å 233.50Å 90.00° 90.04° 90.00°	Depositor
Resolution (Å)	30.00 – 2.50 22.27 – 2.50	Depositor EDS
% Data completeness (in resolution range)	96.9 (30.00-2.50) 97.2 (22.27-2.50)	Depositor EDS
$R_{merge}$	0.05	Depositor
$R_{sym}$	(Not available)	Depositor
$\langle I/\sigma(I) \rangle$ <sup>1</sup>	2.13 (at 2.50Å)	Xtriage
Refinement program	REFMAC 5.8.0103	Depositor
R, $R_{free}$	0.199 , 0.254 0.199 , 0.254	Depositor DCC
$R_{free}$ test set	4679 reflections (10.02%)	wwPDB-VP
Wilson B-factor (Å <sup>2</sup> )	44.9	Xtriage
Anisotropy	0.523	Xtriage
Bulk solvent $k_{sol}$ (e/Å <sup>3</sup> ), $B_{sol}$ (Å <sup>2</sup> )	0.33 , 12.2	EDS
L-test for twinning <sup>2</sup>	$\langle  L  \rangle = 0.50$ , $\langle L^2 \rangle = 0.34$	Xtriage
Estimated twinning fraction	0.026 for -1/2*h+3/2*k,1/2*h+1/2*k,-l 0.026 for -1/2*h-3/2*k,-1/2*h+1/2*k,-l 0.467 for 1/2*h+3/2*k,1/2*h-1/2*k,-l 0.460 for 1/2*h-3/2*k,-1/2*h-1/2*k,-l 0.023 for -h,-k,l	Xtriage
$F_o, F_c$ correlation	0.95	EDS
Total number of atoms	10677	wwPDB-VP
Average B, all atoms (Å <sup>2</sup> )	46.0	wwPDB-VP

Xtriage's analysis on translational NCS is as follows: *The largest off-origin peak in the Patterson function is 4.39% of the height of the origin peak. No significant pseudotranslation is detected.*

<sup>1</sup>Intensities estimated from amplitudes.

<sup>2</sup>Theoretical values of  $\langle |L| \rangle$ ,  $\langle L^2 \rangle$  for acentric reflections are 0.5, 0.333 respectively for untwinned datasets, and 0.375, 0.2 for perfectly twinned datasets.

## 5 Model quality [i](#)

### 5.1 Standard geometry [i](#)

Bond lengths and bond angles in the following residue types are not validated in this section: PLG, CL, GI8

The Z score for a bond length (or angle) is the number of standard deviations the observed value is removed from the expected value. A bond length (or angle) with  $|Z| > 5$  is considered an outlier worth inspection. RMSZ is the root-mean-square of all Z scores of the bond lengths (or angles).

Mol	Chain	Bond lengths		Bond angles	
		RMSZ	# Z  >5	RMSZ	# Z  >5
1	A	0.47	0/3521	0.65	0/4754
1	B	0.46	0/3521	0.66	0/4754
1	C	0.46	0/3521	0.65	0/4754
All	All	0.46	0/10563	0.65	0/14262

There are no bond length outliers.

There are no bond angle outliers.

There are no chirality outliers.

There are no planarity outliers.

### 5.2 Too-close contacts [i](#)

In the following table, the Non-H and H(model) columns list the number of non-hydrogen atoms and hydrogen atoms in the chain respectively. The H(added) column lists the number of hydrogen atoms added and optimized by MolProbity. The Clashes column lists the number of clashes within the asymmetric unit, whereas Symm-Clashes lists symmetry related clashes.

Mol	Chain	Non-H	H(model)	H(added)	Clashes	Symm-Clashes
1	A	3458	0	3477	48	0
1	B	3458	0	3477	41	0
1	C	3458	0	3477	42	0
2	A	20	0	11	3	0
2	B	20	0	11	2	0
2	C	20	0	11	1	0
3	A	32	0	0	2	0
3	B	32	0	0	2	0
3	C	32	0	0	1	0
4	A	1	0	0	0	0

*Continued on next page...*



*Continued from previous page...*

Mol	Chain	Non-H	H(model)	H(added)	Clashes	Symm-Clashes
4	C	1	0	0	0	0
5	A	49	0	0	1	0
5	B	54	0	0	0	0
5	C	42	0	0	0	0
All	All	10677	0	10464	129	0

The all-atom clashscore is defined as the number of clashes found per 1000 atoms (including hydrogen atoms). The all-atom clashscore for this structure is 6.

All (129) close contacts within the same asymmetric unit are listed below, sorted by their clash magnitude.

Atom-1	Atom-2	Interatomic distance (Å)	Clash overlap (Å)
1:A:385:LYS:H	1:A:385:LYS:HD2	1.33	0.94
1:C:385:LYS:H	1:C:385:LYS:CD	1.89	0.85
1:A:385:LYS:H	1:A:385:LYS:CD	1.94	0.80
1:C:385:LYS:HD3	1:C:385:LYS:H	1.44	0.80
1:C:113:VAL:HG12	1:C:176:LYS:HB3	1.66	0.77
1:B:113:VAL:HG12	1:B:176:LYS:HB3	1.68	0.74
1:A:56:GLU:HG2	1:A:266:PHE:CE1	2.24	0.73
1:A:383:LYS:HB2	1:A:385:LYS:HD3	1.71	0.72
1:B:53:LYS:HG2	1:B:70:ILE:HG13	1.78	0.66
1:C:234:THR:HB	1:C:236:HIS:CE1	2.32	0.65
1:C:263:SER:HA	1:C:266:PHE:O	1.98	0.64
1:B:192:GLN:HB2	1:B:227:HIS:CE1	2.32	0.63
1:A:234:THR:HB	1:A:236:HIS:CE1	2.35	0.61
1:B:184:SER:HB3	1:B:371:ARG:HD3	1.83	0.60
1:C:223:ASN:HD22	1:C:226:LEU:HG	1.67	0.59
1:C:163:LEU:HD13	1:C:193:GLN:HG2	1.85	0.59
1:C:91:GLU:HG3	1:C:252:LYS:HB2	1.83	0.59
1:A:184:SER:HB3	1:A:371:ARG:HD3	1.84	0.58
1:A:174:LYS:HE3	1:A:201:VAL:HG22	1.86	0.58
1:B:383:LYS:HB2	1:B:385:LYS:HE2	1.85	0.58
1:C:167:ARG:NH1	1:C:200:GLU:OE2	2.37	0.57
1:B:113:VAL:CG1	1:B:177:VAL:HG23	2.34	0.56
1:B:183:THR:HB	2:B:501:PLG:O3	2.06	0.56
1:B:234:THR:HB	1:B:236:HIS:CE1	2.41	0.55
1:A:367:PRO:HG3	3:A:502:GI8:N24	2.22	0.55
1:A:209:ILE:HG13	1:A:233:THR:HB	1.87	0.54
1:A:53:LYS:HG2	1:A:70:ILE:HG13	1.90	0.54
1:C:183:THR:HB	2:C:501:PLG:O3	2.08	0.54
1:C:209:ILE:HD12	1:C:213:SER:HA	1.90	0.53

*Continued on next page...*

*Continued from previous page...*

Atom-1	Atom-2	Interatomic distance (Å)	Clash overlap (Å)
1:A:223:ASN:HD22	1:A:226:LEU:HG	1.73	0.53
1:A:209:ILE:HD12	1:A:213:SER:HA	1.89	0.53
1:B:129:HIS:HA	1:B:183:THR:HG21	1.90	0.53
1:B:209:ILE:HD12	1:B:213:SER:HA	1.90	0.53
1:A:10:ILE:HG21	1:B:41:ALA:HB2	1.89	0.53
1:A:385:LYS:HD2	1:A:385:LYS:N	2.13	0.53
1:A:6:PRO:O	1:A:10:ILE:HG22	2.09	0.52
1:A:129:HIS:HA	1:A:183:THR:HG21	1.91	0.52
1:B:383:LYS:CB	1:B:385:LYS:HE2	2.39	0.51
1:B:209:ILE:HG21	1:B:224:PRO:HG3	1.93	0.51
1:C:89:ASP:O	1:C:251:LYS:NZ	2.43	0.51
1:B:102:SER:HA	1:B:131:THR:HG21	1.93	0.51
1:A:69:PHE:HB2	1:B:21:GLU:HG2	1.93	0.51
1:A:236:HIS:ND1	1:A:243:ARG:HA	2.26	0.50
1:B:263:SER:HA	1:B:266:PHE:O	2.11	0.50
3:C:502:GI8:C18	3:C:502:GI8:C8	2.89	0.50
2:A:501:PLG:H4A2	1:B:54:TYR:OH	2.11	0.50
1:B:214:SER:HB2	1:B:238:ILE:HG12	1.94	0.50
1:A:127:GLY:HA2	5:A:623:HOH:O	2.12	0.49
1:C:113:VAL:CG1	1:C:177:VAL:HG23	2.42	0.49
1:A:102:SER:HA	1:A:131:THR:HG21	1.94	0.49
1:C:209:ILE:HG13	1:C:233:THR:HB	1.93	0.49
1:C:91:GLU:HG3	1:C:252:LYS:CB	2.42	0.49
1:A:192:GLN:HB2	1:A:227:HIS:CE1	2.48	0.48
1:C:129:HIS:HA	1:C:183:THR:HG21	1.94	0.48
1:A:286:LYS:NZ	1:B:10:ILE:O	2.46	0.48
1:A:385:LYS:CD	1:A:385:LYS:N	2.69	0.48
1:A:17:ILE:HD13	1:B:72:LYS:HB3	1.96	0.48
1:B:209:ILE:HG13	1:B:233:THR:HB	1.95	0.48
1:C:187:ARG:HA	1:C:324:ASP:HB2	1.96	0.48
1:C:231:VAL:HB	1:C:248:PHE:HB2	1.96	0.47
1:A:264:ALA:HA	1:A:268:SER:HB2	1.95	0.47
1:A:263:SER:HA	1:A:266:PHE:O	2.14	0.47
1:C:7:LEU:HA	1:C:10:ILE:CG2	2.44	0.47
1:C:102:SER:O	1:C:106:VAL:HG23	2.15	0.47
1:B:236:HIS:ND1	1:B:243:ARG:HA	2.30	0.46
1:B:338:THR:OG1	1:B:341:LYS:HG3	2.15	0.46
1:B:356:ASN:O	1:B:367:PRO:HB2	2.14	0.46
1:A:56:GLU:HB2	1:A:64:TYR:HE2	1.80	0.46
1:B:160:TYR:CE2	1:B:187:ARG:HG3	2.50	0.46
1:A:113:VAL:CG1	1:A:177:VAL:HG23	2.45	0.46

*Continued on next page...*

*Continued from previous page...*

Atom-1	Atom-2	Interatomic distance (Å)	Clash overlap (Å)
1:C:210:SER:HB3	1:C:234:THR:OG1	2.15	0.46
1:A:120:MET:HG2	1:A:169:MET:HE3	1.96	0.46
1:A:209:ILE:HG21	1:A:224:PRO:HG3	1.98	0.46
1:A:374:THR:N	1:A:375:PRO:CD	2.79	0.46
3:B:502:GI8:C18	3:B:502:GI8:C8	2.93	0.46
1:C:358:ILE:HG12	1:C:368:SER:HB2	1.97	0.46
1:A:10:ILE:HG21	1:B:41:ALA:CB	2.46	0.46
1:C:53:LYS:HG2	1:C:70:ILE:HG13	1.98	0.46
1:A:183:THR:HB	2:A:501:PLG:O3	2.16	0.46
1:A:21:GLU:HG2	1:B:69:PHE:HB2	1.98	0.45
1:A:54:TYR:OH	2:B:501:PLG:H4A2	2.17	0.45
1:B:374:THR:N	1:B:375:PRO:CD	2.80	0.45
1:C:113:VAL:CG1	1:C:176:LYS:HB3	2.42	0.45
1:A:91:GLU:HG3	1:A:252:LYS:HB2	1.99	0.45
1:B:349:ILE:HA	1:B:429:LYS:HB2	1.99	0.45
1:C:201:VAL:HG12	1:C:201:VAL:O	2.17	0.44
1:C:184:SER:HB3	1:C:371:ARG:HD3	1.98	0.44
1:C:7:LEU:HA	1:C:10:ILE:HG22	2.00	0.44
1:C:135:PHE:HB3	1:C:145:SER:CB	2.48	0.43
3:A:502:GI8:C8	3:A:502:GI8:C18	2.96	0.43
1:B:385:LYS:H	1:B:385:LYS:CD	2.31	0.43
1:B:102:SER:O	1:B:106:VAL:HG23	2.18	0.43
1:A:89:ASP:O	1:A:251:LYS:NZ	2.51	0.43
1:B:122:MET:HE1	1:B:155:CYS:HB3	2.00	0.43
1:B:367:PRO:HG3	3:B:502:GI8:N24	2.34	0.43
1:C:102:SER:HA	1:C:131:THR:HG21	2.00	0.43
1:C:6:PRO:O	1:C:10:ILE:HG22	2.19	0.43
1:A:7:LEU:HA	1:A:10:ILE:CG2	2.48	0.43
1:C:385:LYS:N	1:C:385:LYS:CD	2.68	0.43
1:C:163:LEU:HD22	1:C:193:GLN:HG2	2.01	0.42
1:A:198:CYS:HB3	1:A:203:ALA:O	2.19	0.42
1:A:210:SER:HB3	1:A:234:THR:OG1	2.20	0.42
1:C:374:THR:N	1:C:375:PRO:CD	2.83	0.42
1:B:120:MET:HG2	1:B:169:MET:HE3	2.00	0.42
1:A:134:PHE:HA	1:A:152:LEU:HD11	2.00	0.42
1:C:398:ILE:O	1:C:402:VAL:HG23	2.20	0.42
1:C:42:VAL:HG13	1:C:280:ALA:HB1	2.02	0.41
1:A:59:PRO:O	1:A:60:LYS:HB2	2.20	0.41
1:B:264:ALA:HA	1:B:268:SER:HB2	2.01	0.41
1:C:264:ALA:HA	1:C:268:SER:HB2	2.02	0.41
1:A:167:ARG:NH1	1:A:200:GLU:OE2	2.54	0.41

*Continued on next page...*

Continued from previous page...

Atom-1	Atom-2	Interatomic distance (Å)	Clash overlap (Å)
1:C:158:GLN:H	1:C:158:GLN:HG2	1.75	0.41
1:A:97:GLN:N	1:A:98:PRO:CD	2.83	0.41
1:B:56:GLU:HB2	1:B:64:TYR:HE2	1.86	0.41
1:B:358:ILE:HB	1:B:359:PRO:HD2	2.03	0.41
1:C:113:VAL:HG12	1:C:176:LYS:HD2	2.03	0.41
1:C:174:LYS:HA	1:C:201:VAL:HG11	2.02	0.41
1:B:139:LYS:HG3	1:B:140:LYS:N	2.36	0.41
1:B:242:PRO:HG3	1:B:280:ALA:HB3	2.02	0.41
1:A:122:MET:HE2	1:A:126:SER:HB3	2.03	0.41
1:A:113:VAL:HG12	1:A:176:LYS:CB	2.52	0.40
1:C:195:ARG:HB2	1:C:227:HIS:HB3	2.02	0.40
1:B:193:GLN:O	1:B:197:ILE:HG13	2.21	0.40
1:C:151:LYS:HB3	1:C:169:MET:HE1	2.03	0.40
1:C:120:MET:SD	1:C:169:MET:HE2	2.61	0.40
1:B:97:GLN:N	1:B:98:PRO:CD	2.85	0.40
1:A:160:TYR:CE2	1:A:187:ARG:HG3	2.56	0.40
1:A:374:THR:N	1:A:375:PRO:HD3	2.37	0.40
2:A:501:PLG:O3	2:A:501:PLG:N	2.54	0.40

There are no symmetry-related clashes.

## 5.3 Torsion angles [i](#)

### 5.3.1 Protein backbone [i](#)

In the following table, the Percentiles column shows the percent Ramachandran outliers of the chain as a percentile score with respect to all X-ray entries followed by that with respect to entries of similar resolution.

The Analysed column shows the number of residues for which the backbone conformation was analysed, and the total number of residues.

Mol	Chain	Analysed	Favoured	Allowed	Outliers	Percentiles	
1	A	440/442 (100%)	428 (97%)	11 (2%)	1 (0%)	47	68
1	B	440/442 (100%)	432 (98%)	7 (2%)	1 (0%)	47	68
1	C	440/442 (100%)	429 (98%)	10 (2%)	1 (0%)	47	68
All	All	1320/1326 (100%)	1289 (98%)	28 (2%)	3 (0%)	47	68

All (3) Ramachandran outliers are listed below:

Mol	Chain	Res	Type
1	A	237	LYS
1	C	237	LYS
1	B	237	LYS

### 5.3.2 Protein sidechains ⓘ

In the following table, the Percentiles column shows the percent sidechain outliers of the chain as a percentile score with respect to all X-ray entries followed by that with respect to entries of similar resolution.

The Analysed column shows the number of residues for which the sidechain conformation was analysed, and the total number of residues.

Mol	Chain	Analysed	Rotameric	Outliers	Percentiles	
1	A	381/381 (100%)	360 (94%)	21 (6%)	21	41
1	B	381/381 (100%)	360 (94%)	21 (6%)	21	41
1	C	381/381 (100%)	359 (94%)	22 (6%)	20	38
All	All	1143/1143 (100%)	1079 (94%)	64 (6%)	21	40

All (64) residues with a non-rotameric sidechain are listed below:

Mol	Chain	Res	Type
1	A	10	ILE
1	A	21	GLU
1	A	54	TYR
1	A	56	GLU
1	A	61	LYS
1	A	100	SER
1	A	122	MET
1	A	138	LYS
1	A	157	SER
1	A	167	ARG
1	A	172	SER
1	A	183	THR
1	A	192	GLN
1	A	201	VAL
1	A	219	ASN
1	A	250	ASN
1	A	327	LEU
1	A	340	SER
1	A	352	SER
1	A	385	LYS

*Continued on next page...*

*Continued from previous page...*

Mol	Chain	Res	Type
1	A	413	VAL
1	B	21	GLU
1	B	54	TYR
1	B	100	SER
1	B	172	SER
1	B	176	LYS
1	B	183	THR
1	B	192	GLN
1	B	196	GLN
1	B	219	ASN
1	B	250	ASN
1	B	253	ARG
1	B	263	SER
1	B	327	LEU
1	B	334	LYS
1	B	340	SER
1	B	352	SER
1	B	366	SER
1	B	385	LYS
1	B	413	VAL
1	B	417	LYS
1	B	430	GLN
1	C	10	ILE
1	C	21	GLU
1	C	36	ASN
1	C	54	TYR
1	C	100	SER
1	C	116	LYS
1	C	139	LYS
1	C	172	SER
1	C	176	LYS
1	C	183	THR
1	C	192	GLN
1	C	250	ASN
1	C	252	LYS
1	C	254	ASN
1	C	268	SER
1	C	327	LEU
1	C	340	SER
1	C	352	SER
1	C	385	LYS
1	C	399	LYS

*Continued on next page...*

*Continued from previous page...*

Mol	Chain	Res	Type
1	C	411	LYS
1	C	413	VAL

Some sidechains can be flipped to improve hydrogen bonding and reduce clashes. All (11) such sidechains are listed below:

Mol	Chain	Res	Type
1	A	223	ASN
1	A	227	HIS
1	A	299	GLN
1	B	193	GLN
1	B	227	HIS
1	B	424	GLN
1	B	427	GLN
1	C	158	GLN
1	C	223	ASN
1	C	227	HIS
1	C	321	ASN

### 5.3.3 RNA [i](#)

There are no RNA molecules in this entry.

## 5.4 Non-standard residues in protein, DNA, RNA chains [i](#)

There are no non-standard protein/DNA/RNA residues in this entry.

## 5.5 Carbohydrates [i](#)

There are no monosaccharides in this entry.

## 5.6 Ligand geometry [i](#)

Of 8 ligands modelled in this entry, 2 are monoatomic - leaving 6 for Mogul analysis.

In the following table, the Counts columns list the number of bonds (or angles) for which Mogul statistics could be retrieved, the number of bonds (or angles) that are observed in the model and the number of bonds (or angles) that are defined in the Chemical Component Dictionary. The Link column lists molecule types, if any, to which the group is linked. The Z score for a bond length (or angle) is the number of standard deviations the observed value is removed from the

expected value. A bond length (or angle) with  $|Z| > 2$  is considered an outlier worth inspection. RMSZ is the root-mean-square of all Z scores of the bond lengths (or angles).

Mol	Type	Chain	Res	Link	Bond lengths			Bond angles		
					Counts	RMSZ	$\# Z  > 2$	Counts	RMSZ	$\# Z  > 2$
2	PLG	B	501	-	17,20,20	3.11	3 (17%)	23,28,28	1.88	8 (34%)
2	PLG	A	501	-	17,20,20	3.35	3 (17%)	23,28,28	1.84	6 (26%)
2	PLG	C	501	-	17,20,20	3.17	3 (17%)	23,28,28	1.79	6 (26%)
3	GI8	C	502	-	28,35,35	2.96	3 (10%)	30,52,52	2.51	7 (23%)
3	GI8	B	502	-	28,35,35	2.95	3 (10%)	30,52,52	2.45	7 (23%)
3	GI8	A	502	-	28,35,35	2.88	3 (10%)	30,52,52	2.22	7 (23%)

In the following table, the Chirals column lists the number of chiral outliers, the number of chiral centers analysed, the number of these observed in the model and the number defined in the Chemical Component Dictionary. Similar counts are reported in the Torsion and Rings columns. '-' means no outliers of that kind were identified.

Mol	Type	Chain	Res	Link	Chirals	Torsions	Rings
2	PLG	B	501	-	-	4/10/12/12	0/1/1/1
2	PLG	A	501	-	-	4/10/12/12	0/1/1/1
2	PLG	C	501	-	-	4/10/12/12	0/1/1/1
3	GI8	C	502	-	-	2/19/43/43	0/4/4/4
3	GI8	B	502	-	-	1/19/43/43	0/4/4/4
3	GI8	A	502	-	-	3/19/43/43	0/4/4/4

All (18) bond length outliers are listed below:

Mol	Chain	Res	Type	Atoms	Z	Observed(Å)	Ideal(Å)
3	B	502	GI8	C8-C3	-10.52	1.28	1.42
3	C	502	GI8	C8-C3	-10.39	1.28	1.42
3	A	502	GI8	C8-C3	-10.30	1.28	1.42
2	A	501	PLG	C3-C2	9.87	1.50	1.40
2	C	501	PLG	C3-C2	8.57	1.49	1.40
2	B	501	PLG	C3-C2	8.36	1.49	1.40
3	C	502	GI8	O1-C2	8.23	1.46	1.36
3	B	502	GI8	O1-C2	8.07	1.45	1.36
3	A	502	GI8	O1-C2	7.74	1.45	1.36
3	B	502	GI8	C19-C23	-7.49	1.27	1.44
3	C	502	GI8	C19-C23	-7.42	1.28	1.44
3	A	502	GI8	C19-C23	-7.36	1.28	1.44
2	B	501	PLG	C3-C4	6.90	1.50	1.40
2	C	501	PLG	C3-C4	6.89	1.50	1.40

*Continued on next page...*



*Continued from previous page...*

Mol	Chain	Res	Type	Atoms	Z	Observed(Å)	Ideal(Å)
2	A	501	PLG	C5-C4	6.61	1.49	1.40
2	C	501	PLG	C5-C4	6.60	1.49	1.40
2	A	501	PLG	C3-C4	6.53	1.50	1.40
2	B	501	PLG	C5-C4	6.33	1.49	1.40

All (41) bond angle outliers are listed below:

Mol	Chain	Res	Type	Atoms	Z	Observed(°)	Ideal(°)
3	C	502	GI8	O1-C2-N7	8.63	116.42	110.22
3	B	502	GI8	O1-C2-N7	8.50	116.33	110.22
3	A	502	GI8	O1-C2-N7	7.16	115.36	110.22
3	B	502	GI8	C3-C2-N7	-6.15	121.31	127.47
3	C	502	GI8	C3-C2-N7	-6.10	121.36	127.47
3	A	502	GI8	C3-C2-N7	-5.36	122.10	127.47
3	C	502	GI8	C16-C14-C4	4.78	117.53	112.40
2	A	501	PLG	CA-N-C4A	4.31	123.41	112.54
2	B	501	PLG	CA-N-C4A	4.06	122.77	112.54
2	C	501	PLG	CA-N-C4A	4.02	122.67	112.54
3	B	502	GI8	C16-C14-C4	3.93	116.61	112.40
3	A	502	GI8	C16-C14-C4	3.92	116.60	112.40
2	C	501	PLG	C3-C4-C5	-3.44	115.42	118.72
2	B	501	PLG	C4A-C4-C3	3.21	123.48	120.04
3	C	502	GI8	C5-C4-C3	3.13	110.70	104.34
2	C	501	PLG	C4A-C4-C3	3.11	123.37	120.04
2	B	501	PLG	C-CA-N	-3.10	105.09	111.43
2	A	501	PLG	C3-C4-C5	-3.07	115.77	118.72
3	B	502	GI8	C6-C5-C10	-3.02	100.82	104.01
3	A	502	GI8	C6-C5-C10	-2.96	100.88	104.01
3	C	502	GI8	C6-C5-C10	-2.91	100.94	104.01
2	B	501	PLG	OP4-C5A-C5	2.86	114.80	109.35
3	B	502	GI8	C22-C21-C25	-2.80	115.61	120.21
2	A	501	PLG	C-CA-N	-2.78	105.75	111.43
3	B	502	GI8	C5-C4-C3	2.78	109.99	104.34
2	B	501	PLG	C3-C4-C5	-2.73	116.10	118.72
2	B	501	PLG	C6-N1-C2	2.72	124.20	119.17
3	A	502	GI8	C5-C4-C3	2.71	109.85	104.34
2	A	501	PLG	C4A-C4-C3	2.60	122.83	120.04
3	C	502	GI8	C14-C4-C3	-2.53	106.26	110.32
2	A	501	PLG	OP3-P-OP2	2.48	117.12	107.64
3	A	502	GI8	C22-C21-C25	-2.40	116.27	120.21
2	A	501	PLG	C6-N1-C2	2.33	123.48	119.17
2	C	501	PLG	C6-N1-C2	2.26	123.35	119.17

*Continued on next page...*

*Continued from previous page...*

Mol	Chain	Res	Type	Atoms	Z	Observed(°)	Ideal(°)
3	A	502	GI8	C13-C10-N11	2.21	124.50	119.65
2	B	501	PLG	OP3-P-OP2	2.17	115.93	107.64
2	C	501	PLG	OP3-P-OP2	2.12	115.73	107.64
3	B	502	GI8	C13-C10-N11	2.07	124.20	119.65
2	C	501	PLG	C-CA-N	-2.04	107.27	111.43
3	C	502	GI8	C22-C21-C25	-2.04	116.86	120.21
2	B	501	PLG	OP3-P-OP4	-2.02	101.35	106.73

There are no chirality outliers.

All (18) torsion outliers are listed below:

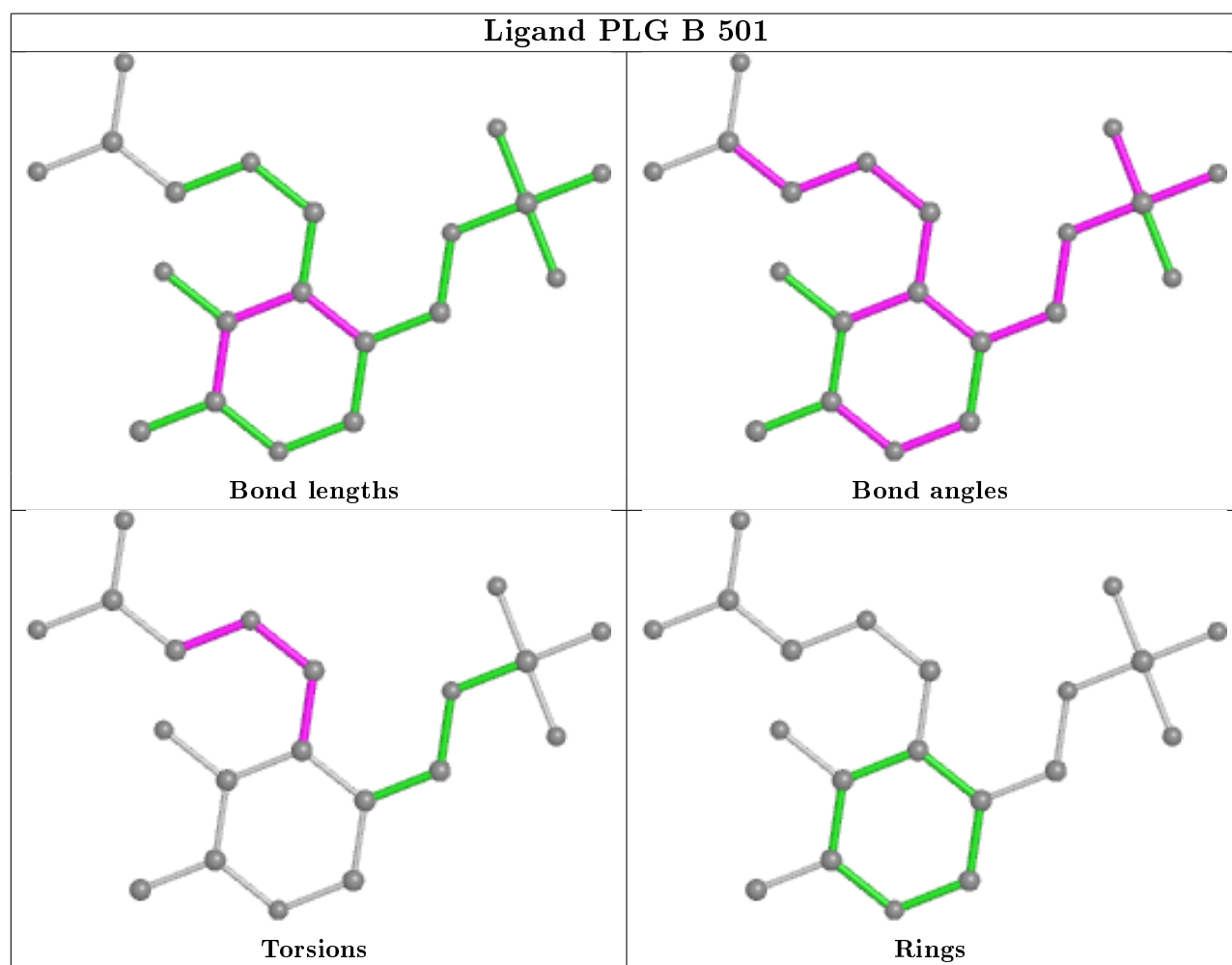
Mol	Chain	Res	Type	Atoms
2	B	501	PLG	C5-C4-C4A-N
2	A	501	PLG	C5-C4-C4A-N
2	C	501	PLG	C5-C4-C4A-N
3	A	502	GI8	C16-C14-C4-C3
2	A	501	PLG	C4-C4A-N-CA
2	C	501	PLG	C4-C4A-N-CA
3	A	502	GI8	C22-C17-C4-C5
2	B	501	PLG	C4-C4A-N-CA
2	A	501	PLG	C5A-OP4-P-OP3
3	C	502	GI8	C16-C14-C4-C3
2	B	501	PLG	C3-C4-C4A-N
2	A	501	PLG	C3-C4-C4A-N
2	C	501	PLG	C3-C4-C4A-N
3	C	502	GI8	C22-C17-C4-C5
3	B	502	GI8	C22-C17-C4-C5
3	A	502	GI8	C18-C17-C4-C5
2	C	501	PLG	C5A-OP4-P-OP3
2	B	501	PLG	C-CA-N-C4A

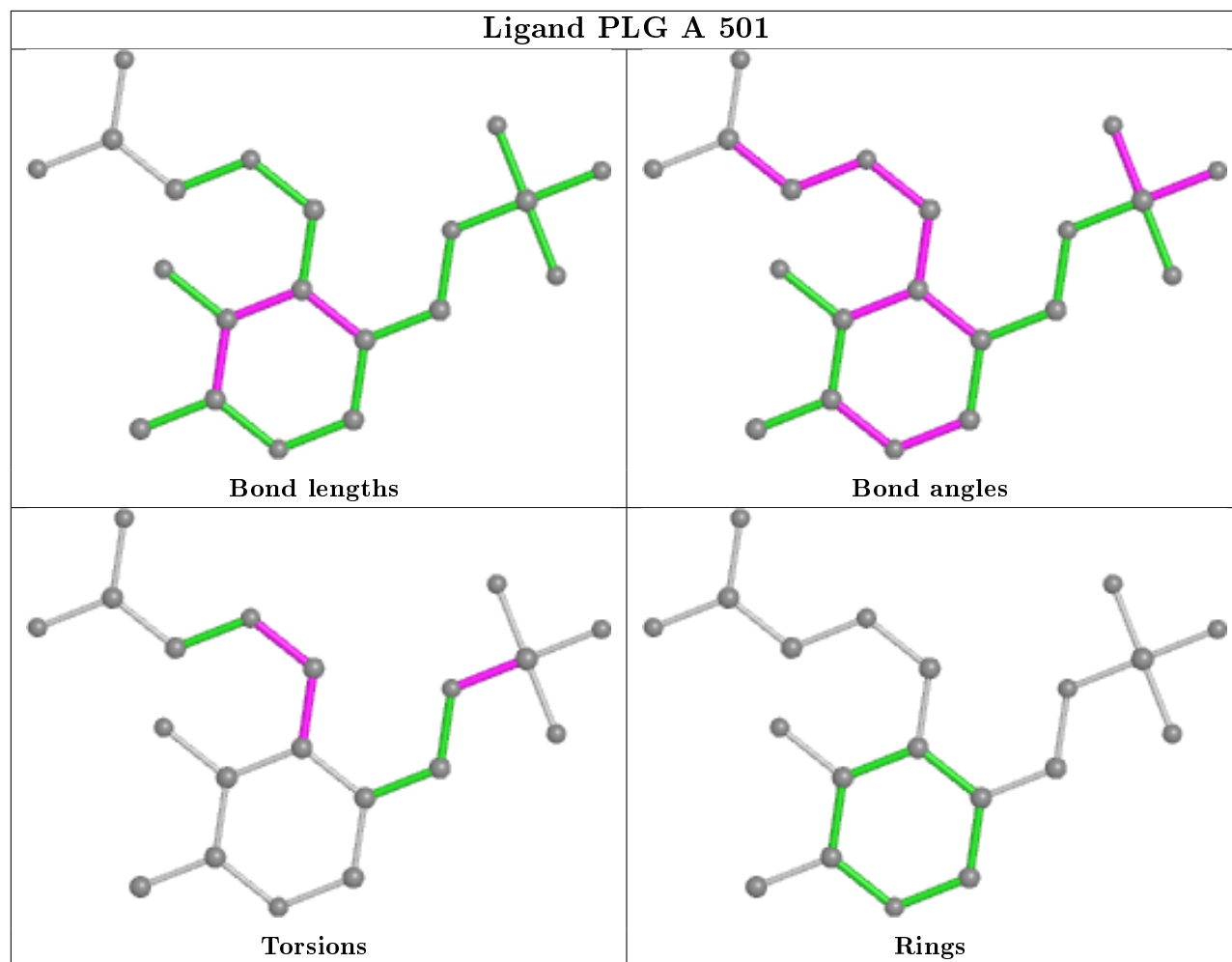
There are no ring outliers.

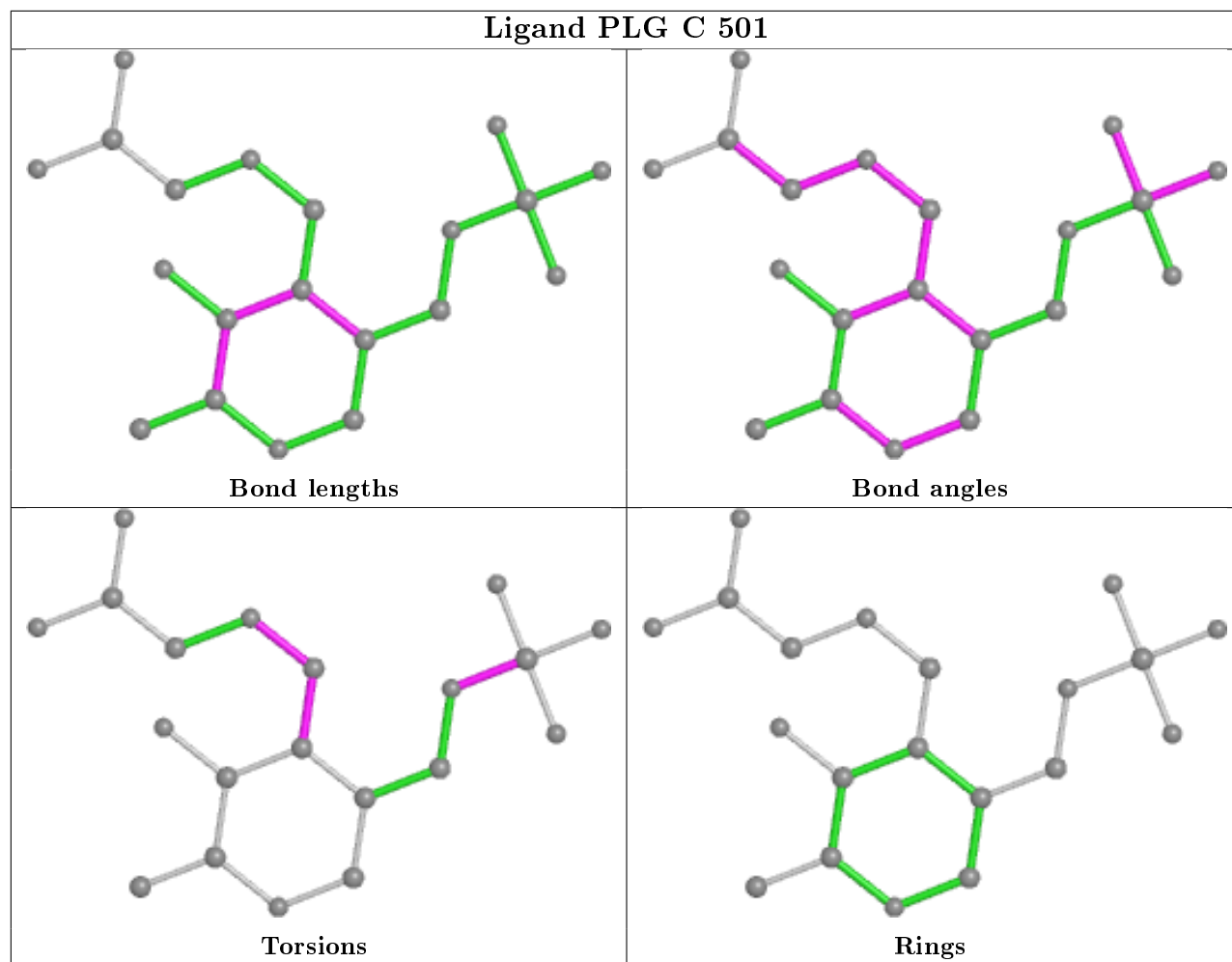
6 monomers are involved in 11 short contacts:

Mol	Chain	Res	Type	Clashes	Symm-Clashes
2	B	501	PLG	2	0
2	A	501	PLG	3	0
2	C	501	PLG	1	0
3	C	502	GI8	1	0
3	B	502	GI8	2	0
3	A	502	GI8	2	0

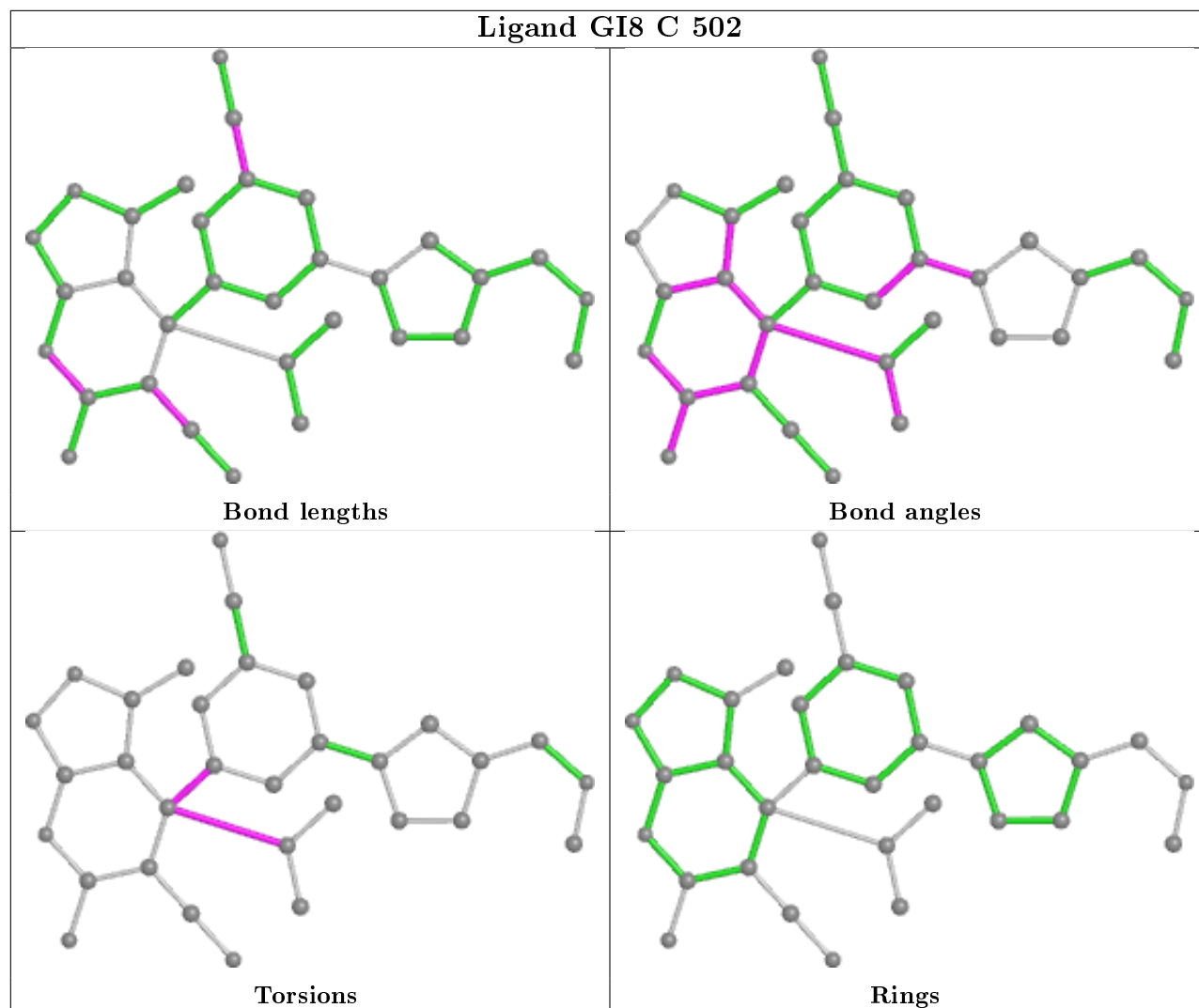
The following is a two-dimensional graphical depiction of Mogul quality analysis of bond lengths, bond angles, torsion angles, and ring geometry for all instances of the Ligand of Interest. In addition, ligands with molecular weight > 250 and outliers as shown on the validation Tables will also be included. For torsion angles, if less than 5% of the Mogul distribution of torsion angles is within 10 degrees of the torsion angle in question, then that torsion angle is considered an outlier. Any bond that is central to one or more torsion angles identified as an outlier by Mogul will be highlighted in the graph. For rings, the root-mean-square deviation (RMSD) between the ring in question and similar rings identified by Mogul is calculated over all ring torsion angles. If the average RMSD is greater than 60 degrees and the minimal RMSD between the ring in question and any Mogul-identified rings is also greater than 60 degrees, then that ring is considered an outlier. The outliers are highlighted in purple. The color gray indicates Mogul did not find sufficient equivalents in the CSD to analyse the geometry.



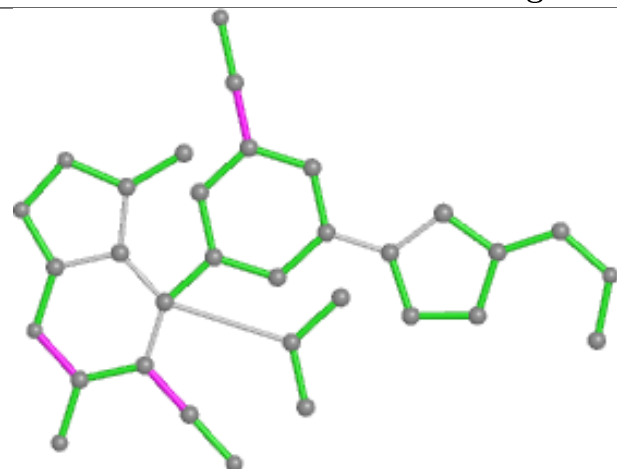




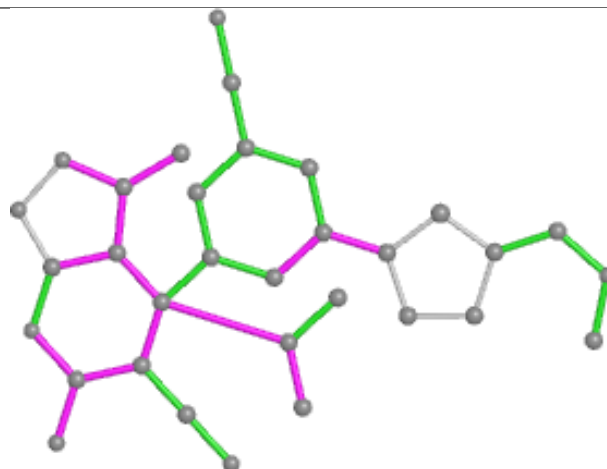
## Ligand GI8 C 502



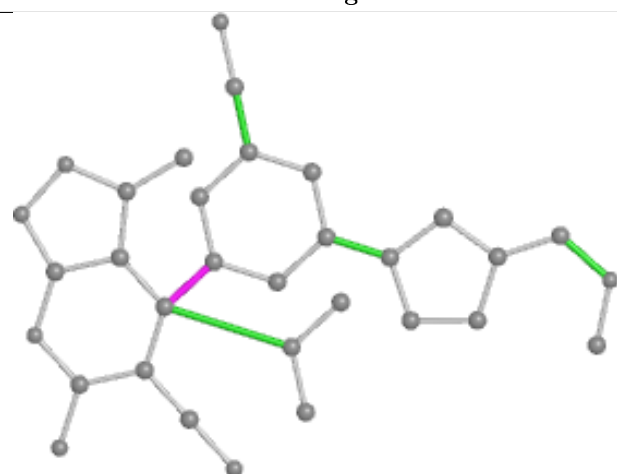
## Ligand GI8 B 502



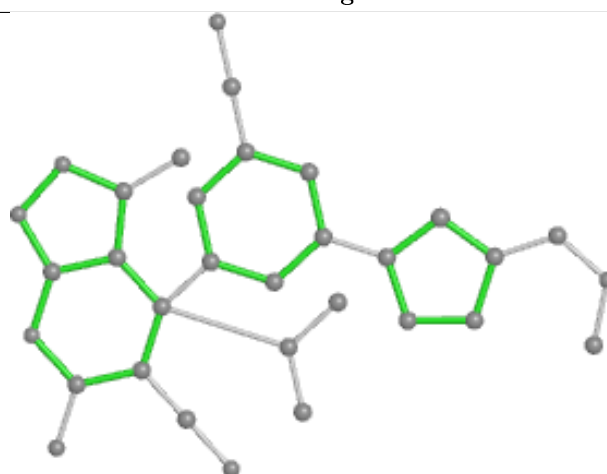
Bond lengths



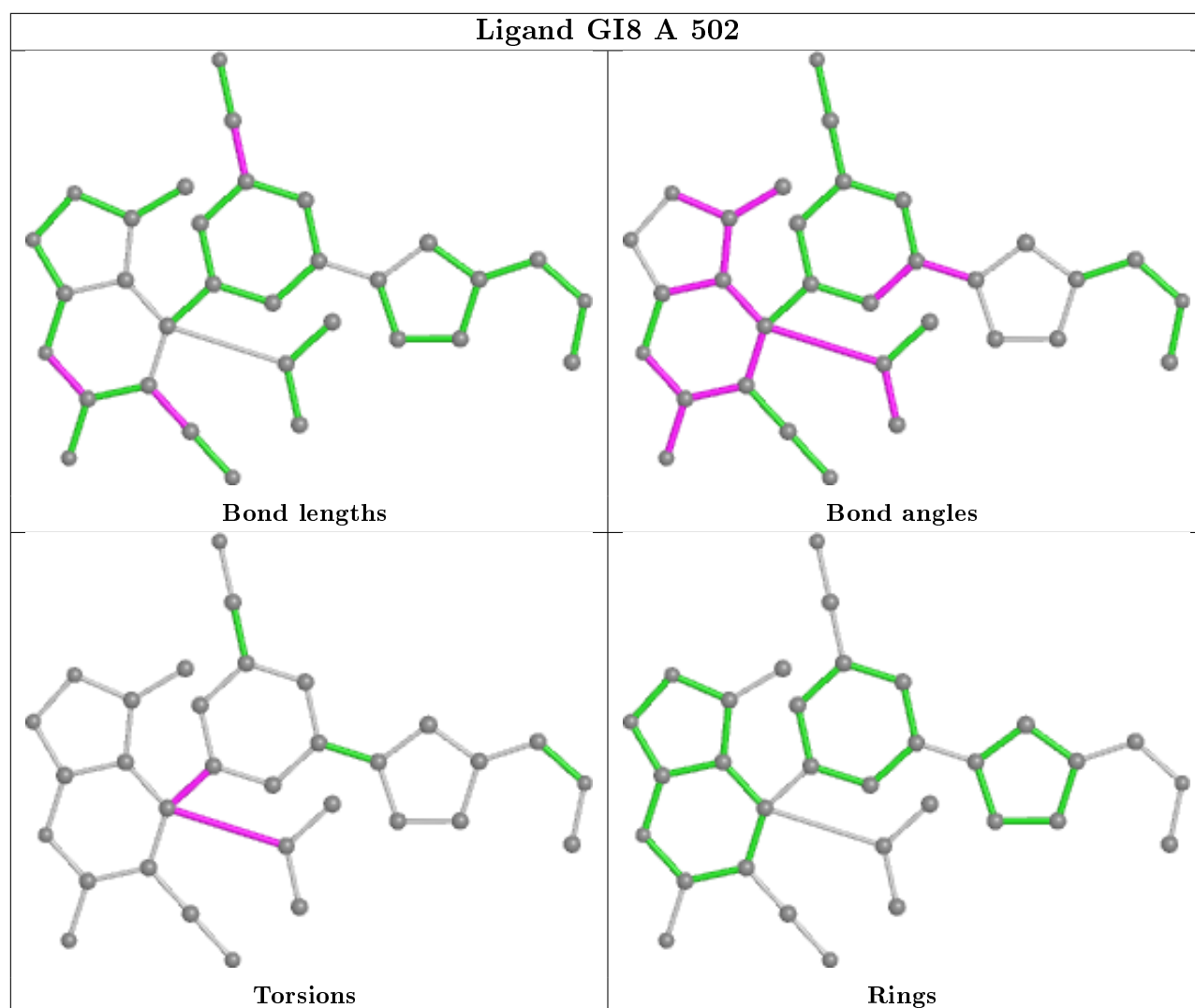
Bond angles



Torsions



Rings



## 5.7 Other polymers [i](#)

There are no such residues in this entry.

## 5.8 Polymer linkage issues [i](#)

There are no chain breaks in this entry.



## 6 Fit of model and data [i](#)

### 6.1 Protein, DNA and RNA chains [i](#)

In the following table, the column labelled ‘#RSRZ> 2’ contains the number (and percentage) of RSRZ outliers, followed by percent RSRZ outliers for the chain as percentile scores relative to all X-ray entries and entries of similar resolution. The OWAB column contains the minimum, median, 95<sup>th</sup> percentile and maximum values of the occupancy-weighted average B-factor per residue. The column labelled ‘Q< 0.9’ lists the number of (and percentage) of residues with an average occupancy less than 0.9.

Mol	Chain	Analysed	<RSRZ>	#RSRZ>2	OWAB(Å <sup>2</sup> )	Q<0.9
1	A	442/442 (100%)	-0.08	3 (0%) 87 89	31, 45, 60, 77	0
1	B	442/442 (100%)	-0.04	2 (0%) 91 91	32, 45, 61, 77	0
1	C	442/442 (100%)	0.00	2 (0%) 91 91	33, 46, 61, 77	0
All	All	1326/1326 (100%)	-0.04	7 (0%) 91 91	31, 45, 61, 77	0

All (7) RSRZ outliers are listed below:

Mol	Chain	Res	Type	RSRZ
1	A	365	VAL	4.7
1	B	365	VAL	3.3
1	C	365	VAL	3.0
1	C	427	GLN	2.9
1	A	423	ALA	2.2
1	B	9	GLN	2.2
1	A	138	LYS	2.1

### 6.2 Non-standard residues in protein, DNA, RNA chains [i](#)

There are no non-standard protein/DNA/RNA residues in this entry.

### 6.3 Carbohydrates [i](#)

There are no monosaccharides in this entry.

### 6.4 Ligands [i](#)

In the following table, the Atoms column lists the number of modelled atoms in the group and the number defined in the chemical component dictionary. The B-factors column lists the minimum,

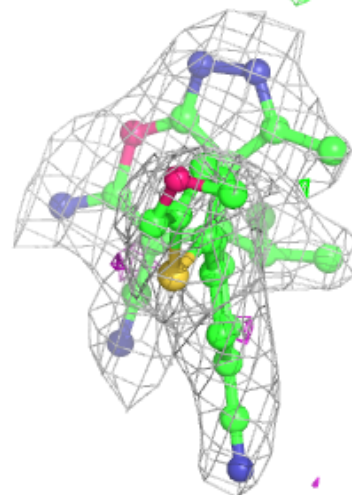
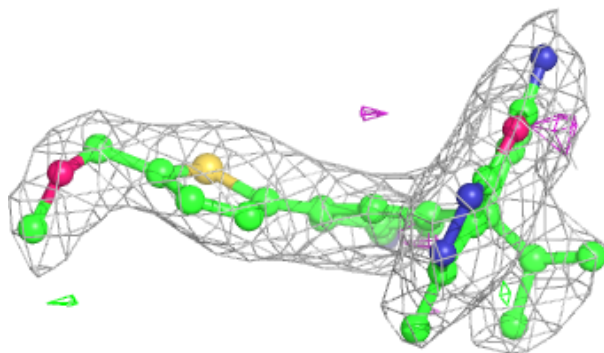
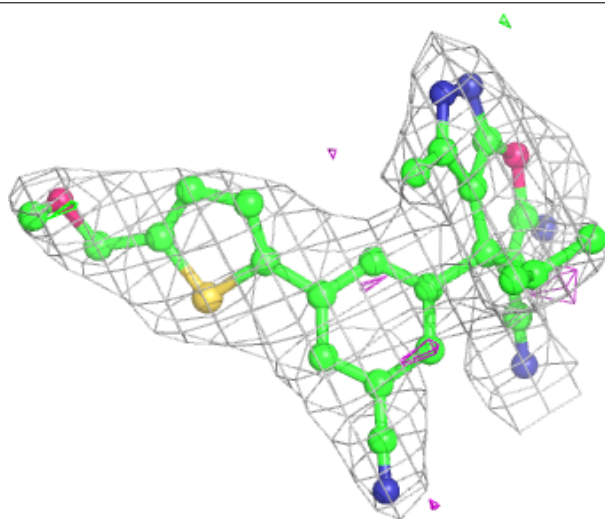
median, 95<sup>th</sup> percentile and maximum values of B factors of atoms in the group. The column labelled 'Q< 0.9' lists the number of atoms with occupancy less than 0.9.

Mol	Type	Chain	Res	Atoms	RSCC	RSR	B-factors( $\text{\AA}^2$ )	Q<0.9
3	GI8	B	502	32/32	0.92	0.18	41,45,54,56	0
2	PLG	C	501	20/20	0.93	0.16	34,37,40,40	0
3	GI8	C	502	32/32	0.94	0.20	40,44,55,64	0
4	CL	C	503	1/1	0.94	0.14	41,41,41,41	1
2	PLG	B	501	20/20	0.95	0.15	33,37,38,38	0
4	CL	A	503	1/1	0.95	0.10	44,44,44,44	0
3	GI8	A	502	32/32	0.95	0.16	40,46,51,57	0
2	PLG	A	501	20/20	0.97	0.15	32,36,38,38	0

The following is a graphical depiction of the model fit to experimental electron density of all instances of the Ligand of Interest. In addition, ligands with molecular weight > 250 and outliers as shown on the geometry validation Tables will also be included. Each fit is shown from different orientation to approximate a three-dimensional view.

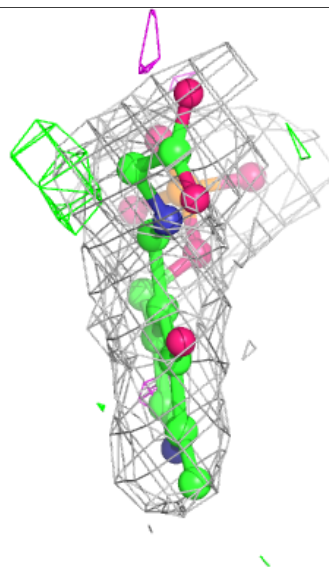
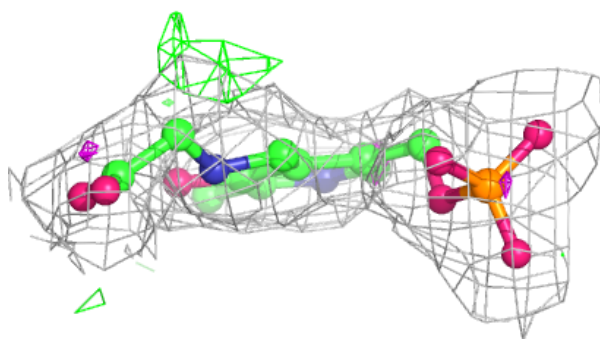
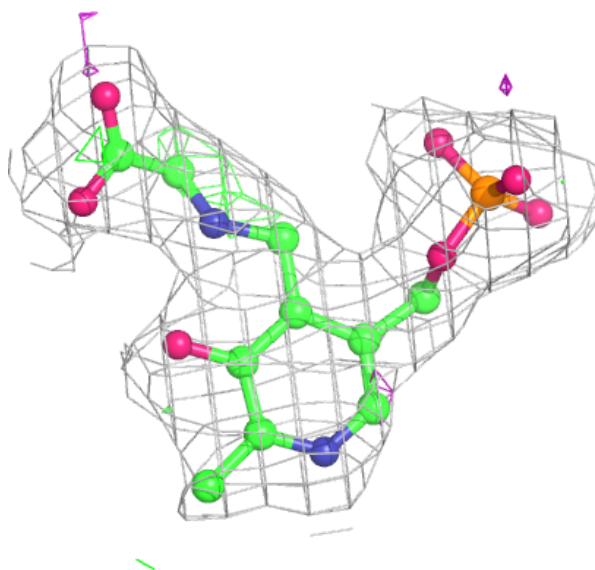
#### Electron density around GI8 B 502:

2mF<sub>o</sub>-DF<sub>c</sub> (at 0.7 rmsd) in gray  
mF<sub>o</sub>-DF<sub>c</sub> (at 3 rmsd) in purple (negative)  
and green (positive)



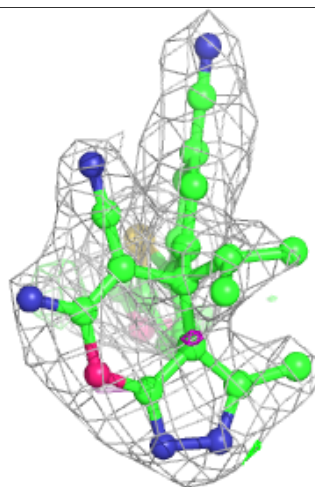
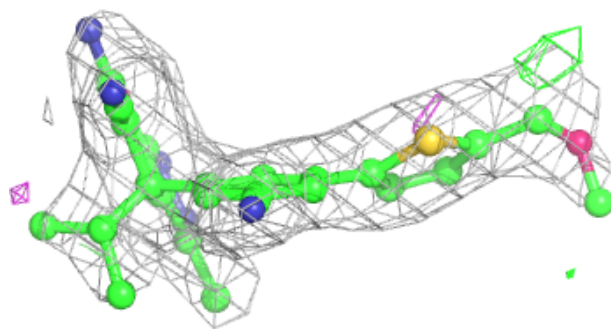
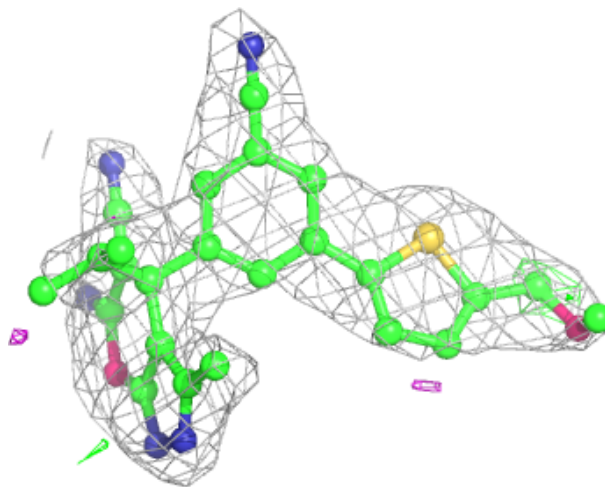
**Electron density around PLG C 501:**

$2mF_o-DF_c$  (at 0.7 rmsd) in gray  
 $mF_o-DF_c$  (at 3 rmsd) in purple (negative)  
and green (positive)



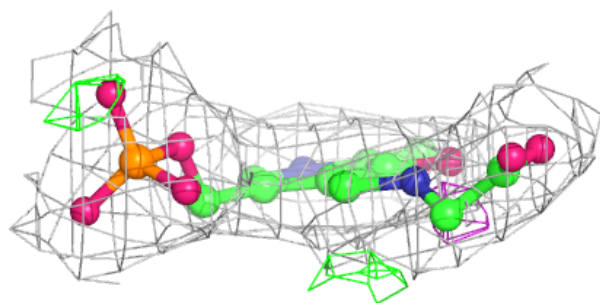
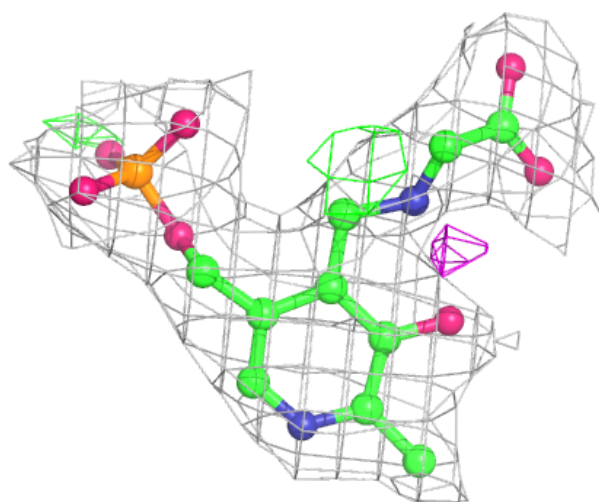
**Electron density around GI8 C 502:**

$2mF_o-DF_c$  (at 0.7 rmsd) in gray  
 $mF_o-DF_c$  (at 3 rmsd) in purple (negative)  
and green (positive)



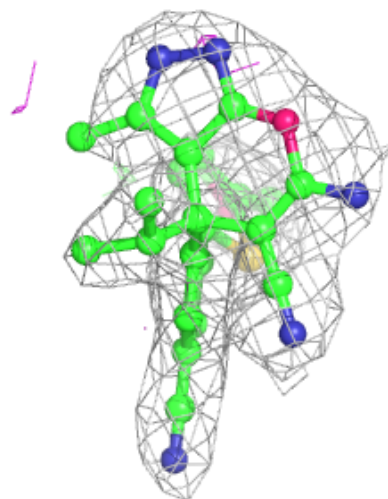
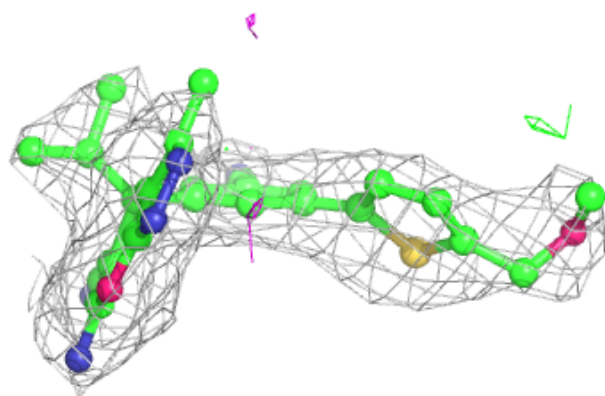
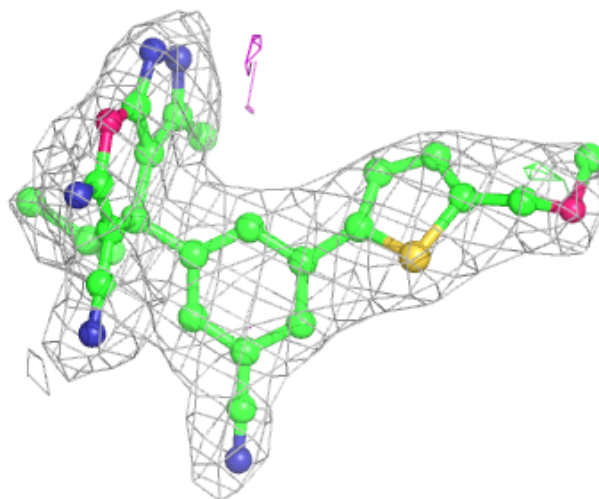
**Electron density around PLG B 501:**

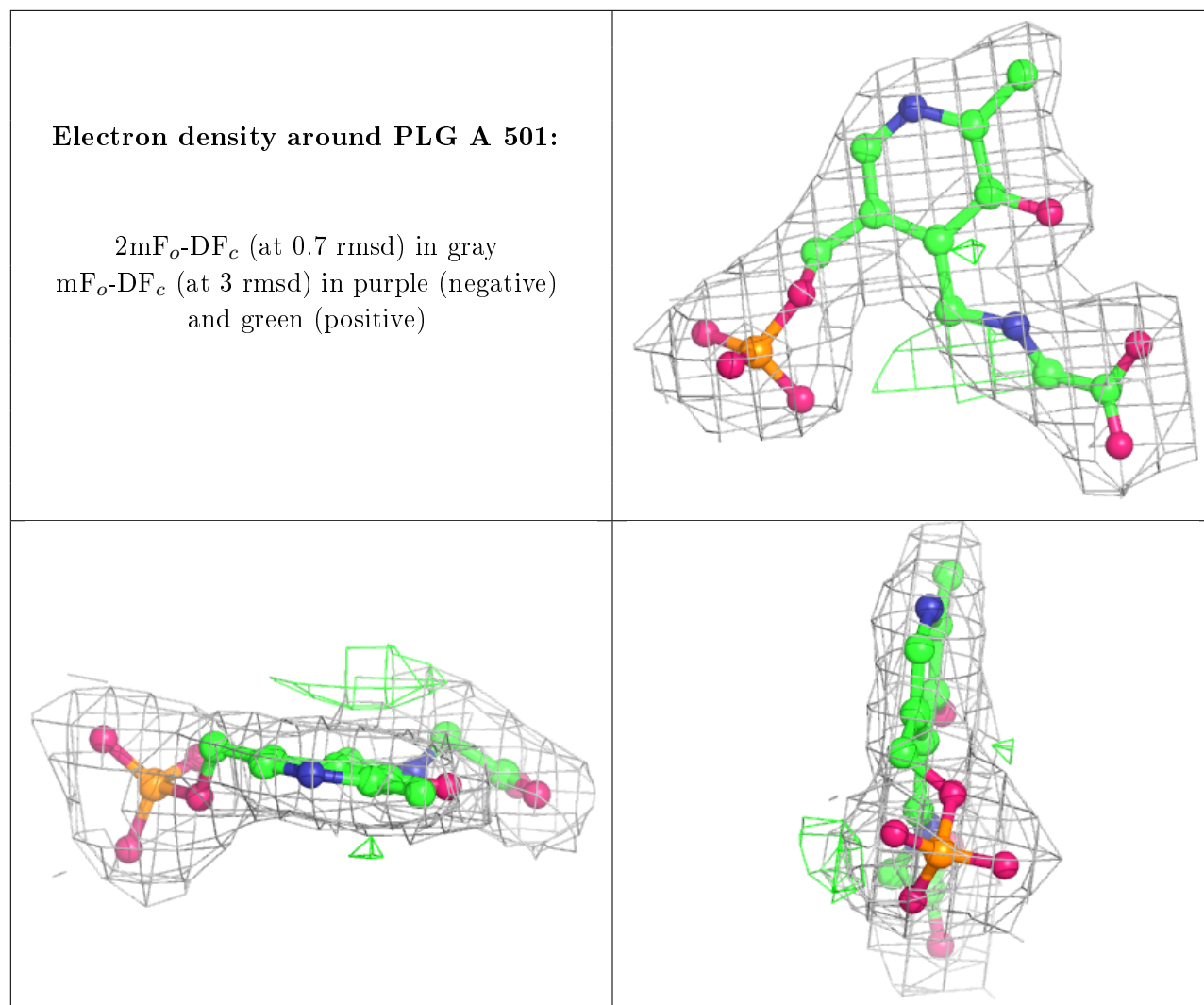
$2mF_o-DF_c$  (at 0.7 rmsd) in gray  
 $mF_o-DF_c$  (at 3 rmsd) in purple (negative)  
and green (positive)



**Electron density around GI8 A 502:**

$2mF_o-DF_c$  (at 0.7 rmsd) in gray  
 $mF_o-DF_c$  (at 3 rmsd) in purple (negative)  
and green (positive)





## 6.5 Other polymers ⓘ

There are no such residues in this entry.