



wwPDB X-ray Structure Validation Summary Report ⓘ

May 22, 2020 – 06:50 am BST

PDB ID : 1GYK
Title : Serum Amyloid P Component co-crystallised with MOBDG at neutral pH
Authors : Thompson, D.; Pepys, M.B.; Tickle, I.; Wood, S.P.
Deposited on : 2002-04-25
Resolution : 2.20 Å(reported)

This is a wwPDB X-ray Structure Validation Summary Report for a publicly released PDB entry.

We welcome your comments at validation@mail.wwpdb.org

A user guide is available at

<https://www.wwpdb.org/validation/2017/XrayValidationReportHelp>

with specific help available everywhere you see the ⓘ symbol.

The following versions of software and data (see [references ⓘ](#)) were used in the production of this report:

MolProbity : 4.02b-467
Mogul : 1.8.5 (274361), CSD as541be (2020)
Xtriage (Phenix) : 1.13
EDS : 2.11
buster-report : 1.1.7 (2018)
Percentile statistics : 20191225.v01 (using entries in the PDB archive December 25th 2019)
Refmac : 5.8.0158
CCP4 : 7.0.044 (Gargrove)
Ideal geometry (proteins) : Engh & Huber (2001)
Ideal geometry (DNA, RNA) : Parkinson et al. (1996)
Validation Pipeline (wwPDB-VP) : 2.11

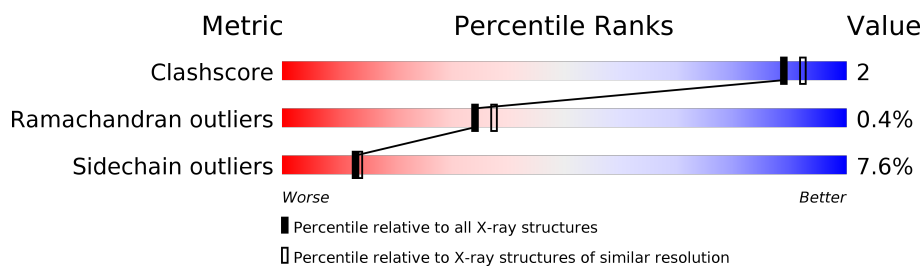
1 Overall quality at a glance

The following experimental techniques were used to determine the structure:

X-RAY DIFFRACTION

The reported resolution of this entry is 2.20 Å.

Percentile scores (ranging between 0-100) for global validation metrics of the entry are shown in the following graphic. The table shows the number of entries on which the scores are based.



Metric	Whole archive (#Entries)	Similar resolution (#Entries, resolution range(Å))
Clashscore	141614	5594 (2.20-2.20)
Ramachandran outliers	138981	5503 (2.20-2.20)
Sidechain outliers	138945	5504 (2.20-2.20)

The table below summarises the geometric issues observed across the polymeric chains and their fit to the electron density. The red, orange, yellow and green segments on the lower bar indicate the fraction of residues that contain outliers for ≥ 3 , 2, 1 and 0 types of geometric quality criteria respectively. A grey segment represents the fraction of residues that are not modelled. The numeric value for each fraction is indicated below the corresponding segment, with a dot representing fractions $\leq 5\%$.

Mol	Chain	Length	Quality of chain
1	A	204	80% 17% ..
1	B	204	78% 18% ..
1	C	204	76% 20% ..
1	D	204	79% 18% ..
1	E	204	79% 17% .

2 Entry composition

There are 3 unique types of molecules in this entry. The entry contains 8326 atoms, of which 0 are hydrogens and 0 are deuteriums.

In the tables below, the ZeroOcc column contains the number of atoms modelled with zero occupancy, the AltConf column contains the number of residues with at least one atom in alternate conformation and the Trace column contains the number of residues modelled with at most 2 atoms.

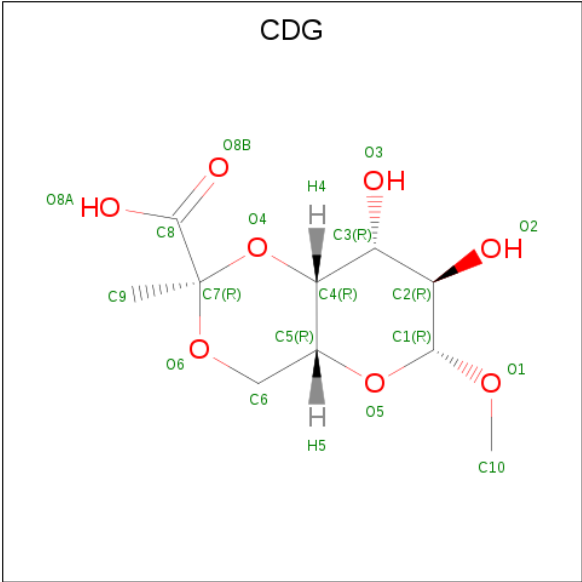
- Molecule 1 is a protein called SERUM AMYLOID P-COMPONENT.

Mol	Chain	Residues	Atoms					ZeroOcc	AltConf	Trace
1	A	204	Total	C	N	O	S	0	0	0
			1649	1071	272	303	3			
1	B	204	Total	C	N	O	S	0	0	0
			1649	1071	272	303	3			
1	C	204	Total	C	N	O	S	0	0	0
			1649	1071	272	303	3			
1	D	204	Total	C	N	O	S	0	0	0
			1649	1071	272	303	3			
1	E	204	Total	C	N	O	S	0	0	0
			1649	1071	272	303	3			

- Molecule 2 is CALCIUM ION (three-letter code: CA) (formula: Ca).

Mol	Chain	Residues	Atoms		ZeroOcc	AltConf
2	B	2	Total	Ca	0	0
			2	2		
2	A	2	Total	Ca	0	0
			2	2		
2	D	2	Total	Ca	0	0
			2	2		
2	C	2	Total	Ca	0	0
			2	2		
2	E	1	Total	Ca	0	0
			1	1		

- Molecule 3 is METHYL 4,6-O-[(1R)-1-CARBOXYETHYLIDENE]-BETA-D-GALACTOPYRANOSIDE (three-letter code: CDG) (formula: C₁₀H₁₆O₈).

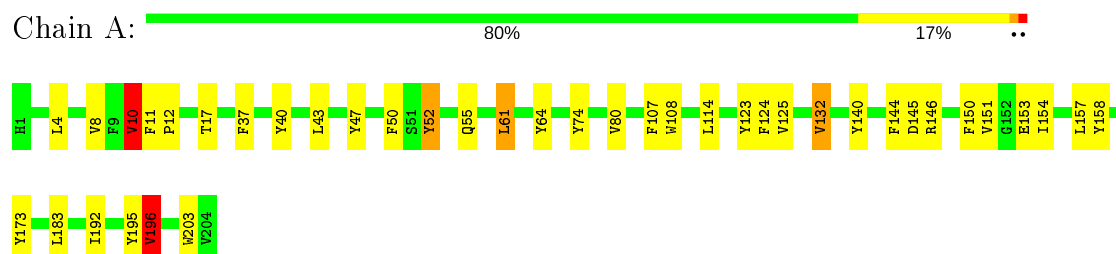


Mol	Chain	Residues	Atoms			ZeroOcc	AltConf
3	A	1	Total	C	O	5	0
			18	10	8		
3	B	1	Total	C	O	5	0
			18	10	8		
3	C	1	Total	C	O	5	0
			18	10	8		
3	D	1	Total	C	O	5	0
			18	10	8		

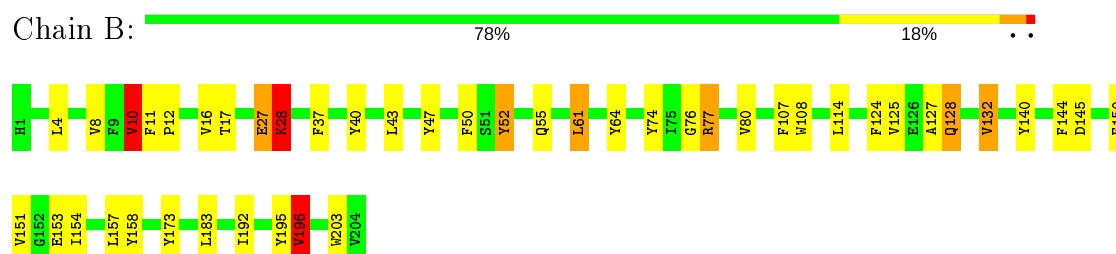
3 Residue-property plots [i](#)

These plots are drawn for all protein, RNA and DNA chains in the entry. The first graphic for a chain summarises the proportions of the various outlier classes displayed in the second graphic. The second graphic shows the sequence view annotated by issues in geometry. Residues are color-coded according to the number of geometric quality criteria for which they contain at least one outlier: green = 0, yellow = 1, orange = 2 and red = 3 or more. Stretches of 2 or more consecutive residues without any outlier are shown as a green connector. Residues present in the sample, but not in the model, are shown in grey.

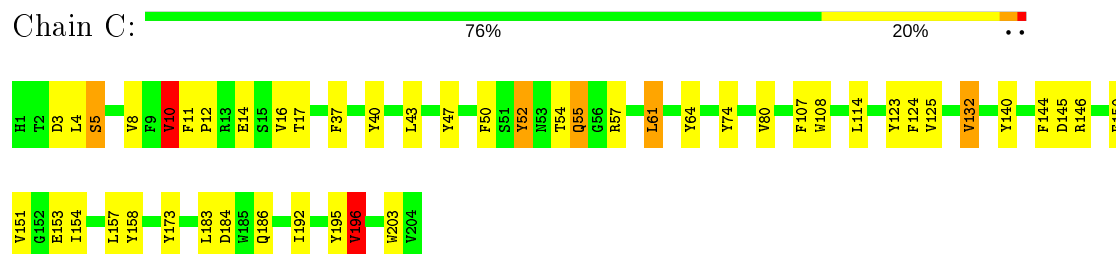
• Molecule 1: SERUM AMYLOID P-COMPONENT



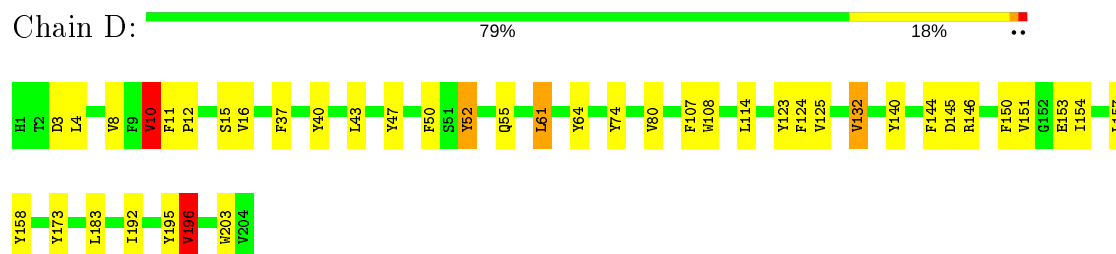
• Molecule 1: SERUM AMYLOID P-COMPONENT



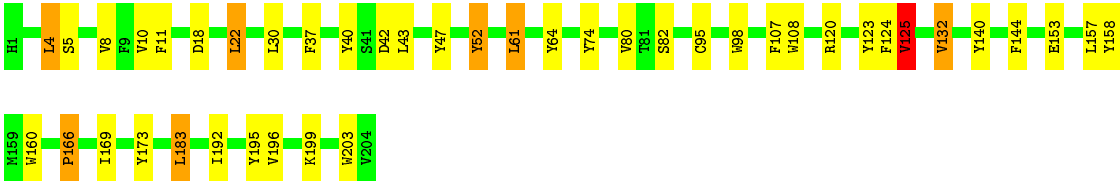
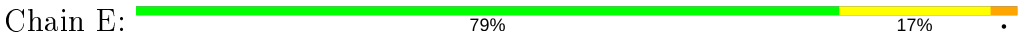
• Molecule 1: SERUM AMYLOID P-COMPONENT



• Molecule 1: SERUM AMYLOID P-COMPONENT



● Molecule 1: SERUM AMYLOID P-COMPONENT



4 Data and refinement statistics

Property	Value	Source
Space group	P 1 21 1	Depositor
Cell constants a, b, c, α , β , γ	95.76 Å 70.53 Å 103.41 Å 90.00° 96.80° 90.00°	Depositor
Resolution (Å)	20.00 – 2.20 21.21 – 2.20	Depositor EDS
% Data completeness (in resolution range)	95.2 (20.00-2.20) 95.4 (21.21-2.20)	Depositor EDS
R_{merge}	0.06	Depositor
R_{sym}	(Not available)	Depositor
$\langle I/\sigma(I) \rangle$ ¹	7.24 (at 2.19 Å)	Xtriage
Refinement program	X-PLOR	Depositor
R, R_{free}	0.186 , 0.224 0.284 , (Not available)	Depositor DCC
R_{free} test set	No test flags present.	wwPDB-VP
Wilson B-factor (Å ²)	20.3	Xtriage
Anisotropy	0.102	Xtriage
Bulk solvent k_{sol} (e/Å ³), B_{sol} (Å ²)	0.35 , 8.6	EDS
L-test for twinning ²	$\langle L \rangle = 0.50$, $\langle L^2 \rangle = 0.33$	Xtriage
Estimated twinning fraction	No twinning to report.	Xtriage
F_o, F_c correlation	0.83	EDS
Total number of atoms	8326	wwPDB-VP
Average B, all atoms (Å ²)	16.0	wwPDB-VP

Xtriage's analysis on translational NCS is as follows: *The largest off-origin peak in the Patterson function is 3.96% of the height of the origin peak. No significant pseudotranslation is detected.*

¹Intensities estimated from amplitudes.

²Theoretical values of $\langle |L| \rangle$, $\langle L^2 \rangle$ for acentric reflections are 0.5, 0.333 respectively for untwinned datasets, and 0.375, 0.2 for perfectly twinned datasets.

5 Model quality [i](#)

5.1 Standard geometry [i](#)

Bond lengths and bond angles in the following residue types are not validated in this section: CA, CDG

The Z score for a bond length (or angle) is the number of standard deviations the observed value is removed from the expected value. A bond length (or angle) with $|Z| > 5$ is considered an outlier worth inspection. RMSZ is the root-mean-square of all Z scores of the bond lengths (or angles).

Mol	Chain	Bond lengths		Bond angles	
		RMSZ	# $ Z > 5$	RMSZ	# $ Z > 5$
1	A	1.62	41/1696 (2.4%)	1.33	8/2306 (0.3%)
1	B	1.68	45/1696 (2.7%)	1.37	13/2306 (0.6%)
1	C	1.64	42/1696 (2.5%)	1.35	11/2306 (0.5%)
1	D	1.64	43/1696 (2.5%)	1.33	8/2306 (0.3%)
1	E	1.61	31/1696 (1.8%)	1.34	11/2306 (0.5%)
All	All	1.64	202/8480 (2.4%)	1.34	51/11530 (0.4%)

Chiral center outliers are detected by calculating the chiral volume of a chiral center and verifying if the center is modelled as a planar moiety or with the opposite hand. A planarity outlier is detected by checking planarity of atoms in a peptide group, atoms in a mainchain group or atoms of a sidechain that are expected to be planar.

Mol	Chain	#Chirality outliers	#Planarity outliers
1	B	0	1

The worst 5 of 202 bond length outliers are listed below:

Mol	Chain	Res	Type	Atoms	Z	Observed(Å)	Ideal(Å)
1	B	17	THR	CA-CB	-9.98	1.27	1.53
1	C	145	ASP	C-N	8.75	1.54	1.34
1	D	3	ASP	CA-CB	7.86	1.71	1.53
1	E	160	TRP	NE1-CE2	7.63	1.47	1.37
1	B	28	LYS	CA-C	-7.55	1.33	1.52

The worst 5 of 51 bond angle outliers are listed below:

Mol	Chain	Res	Type	Atoms	Z	Observed(°)	Ideal(°)
1	B	28	LYS	O-C-N	-9.73	102.62	121.10
1	E	157	LEU	CA-CB-CG	9.00	136.01	115.30
1	C	16	VAL	C-N-CA	7.57	140.63	121.70

Continued on next page...

Continued from previous page...

Mol	Chain	Res	Type	Atoms	Z	Observed(°)	Ideal(°)
1	B	43	LEU	CA-CB-CG	7.11	131.66	115.30
1	C	43	LEU	CA-CB-CG	7.11	131.66	115.30

There are no chirality outliers.

All (1) planarity outliers are listed below:

Mol	Chain	Res	Type	Group
1	B	28	LYS	Mainchain

5.2 Too-close contacts ⓘ

In the following table, the Non-H and H(model) columns list the number of non-hydrogen atoms and hydrogen atoms in the chain respectively. The H(added) column lists the number of hydrogen atoms added and optimized by MolProbity. The Clashes column lists the number of clashes within the asymmetric unit, whereas Symm-Clashes lists symmetry related clashes.

Mol	Chain	Non-H	H(model)	H(added)	Clashes	Symm-Clashes
1	A	1649	0	1626	2	0
1	B	1649	0	1626	8	0
1	C	1649	0	1626	8	0
1	D	1649	0	1626	3	0
1	E	1649	0	1626	6	0
2	A	2	0	0	0	0
2	B	2	0	0	0	0
2	C	2	0	0	0	0
2	D	2	0	0	0	0
2	E	1	0	0	0	0
3	A	18	0	15	0	0
3	B	18	0	15	0	0
3	C	18	0	15	0	0
3	D	18	0	15	0	0
All	All	8326	0	8190	27	0

The all-atom clashscore is defined as the number of clashes found per 1000 atoms (including hydrogen atoms). The all-atom clashscore for this structure is 2.

The worst 5 of 27 close contacts within the same asymmetric unit are listed below, sorted by their clash magnitude.

Atom-1	Atom-2	Interatomic distance (Å)	Clash overlap (Å)
1:B:27:GLU:HA	1:B:127:ALA:HB1	1.56	0.85

Continued on next page...

Continued from previous page...

Atom-1	Atom-2	Interatomic distance (Å)	Clash overlap (Å)
1:E:95:CYS:HB2	1:E:108:TRP:HB2	1.59	0.83
1:C:14:GLU:HB3	1:C:146:ARG:HH12	1.60	0.65
1:C:184:ASP:OD1	1:C:186:GLN:HB2	1.99	0.62
1:C:3:ASP:OD1	1:C:5:SER:HB2	2.02	0.59

There are no symmetry-related clashes.

5.3 Torsion angles [i](#)

5.3.1 Protein backbone [i](#)

In the following table, the Percentiles column shows the percent Ramachandran outliers of the chain as a percentile score with respect to all X-ray entries followed by that with respect to entries of similar resolution.

The Analysed column shows the number of residues for which the backbone conformation was analysed, and the total number of residues.

Mol	Chain	Analysed	Favoured	Allowed	Outliers	Percentiles	
1	A	202/204 (99%)	199 (98%)	2 (1%)	1 (0%)	29	31
1	B	202/204 (99%)	199 (98%)	2 (1%)	1 (0%)	29	31
1	C	202/204 (99%)	198 (98%)	3 (2%)	1 (0%)	29	31
1	D	202/204 (99%)	199 (98%)	2 (1%)	1 (0%)	29	31
1	E	202/204 (99%)	194 (96%)	8 (4%)	0	100	100
All	All	1010/1020 (99%)	989 (98%)	17 (2%)	4 (0%)	34	37

All (4) Ramachandran outliers are listed below:

Mol	Chain	Res	Type
1	A	55	GLN
1	B	55	GLN
1	C	55	GLN
1	D	55	GLN

5.3.2 Protein sidechains [i](#)

In the following table, the Percentiles column shows the percent sidechain outliers of the chain as a percentile score with respect to all X-ray entries followed by that with respect to entries of similar resolution.

The Analysed column shows the number of residues for which the sidechain conformation was analysed, and the total number of residues.

Mol	Chain	Analysed	Rotameric	Outliers	Percentiles	
1	A	181/181 (100%)	167 (92%)	14 (8%)	13	13
1	B	181/181 (100%)	166 (92%)	15 (8%)	11	11
1	C	181/181 (100%)	167 (92%)	14 (8%)	13	13
1	D	181/181 (100%)	167 (92%)	14 (8%)	13	13
1	E	181/181 (100%)	169 (93%)	12 (7%)	16	19
All	All	905/905 (100%)	836 (92%)	69 (8%)	13	14

5 of 69 residues with a non-rotameric sidechain are listed below:

Mol	Chain	Res	Type
1	C	8	VAL
1	C	151	VAL
1	E	82	SER
1	C	10	VAL
1	C	80	VAL

Some sidechains can be flipped to improve hydrogen bonding and reduce clashes. 5 of 6 such sidechains are listed below:

Mol	Chain	Res	Type
1	C	1	HIS
1	E	148	GLN
1	D	1	HIS
1	B	1	HIS
1	E	32	ASN

5.3.3 RNA ⓘ

There are no RNA molecules in this entry.

5.4 Non-standard residues in protein, DNA, RNA chains ⓘ

There are no non-standard protein/DNA/RNA residues in this entry.

5.5 Carbohydrates ⓘ

There are no carbohydrates in this entry.

5.6 Ligand geometry

Of 13 ligands modelled in this entry, 9 are monoatomic - leaving 4 for Mogul analysis.

In the following table, the Counts columns list the number of bonds (or angles) for which Mogul statistics could be retrieved, the number of bonds (or angles) that are observed in the model and the number of bonds (or angles) that are defined in the Chemical Component Dictionary. The Link column lists molecule types, if any, to which the group is linked. The Z score for a bond length (or angle) is the number of standard deviations the observed value is removed from the expected value. A bond length (or angle) with $|Z| > 2$ is considered an outlier worth inspection. RMSZ is the root-mean-square of all Z scores of the bond lengths (or angles).

Mol	Type	Chain	Res	Link	Bond lengths			Bond angles		
					Counts	RMSZ	# Z > 2	Counts	RMSZ	# Z > 2
3	CDG	B	1207	2	16,19,19	2.74	7 (43%)	24,29,29	2.59	6 (25%)
3	CDG	D	1207	2	16,19,19	2.74	7 (43%)	24,29,29	2.60	6 (25%)
3	CDG	A	1207	2	16,19,19	2.75	7 (43%)	24,29,29	2.60	6 (25%)
3	CDG	C	1207	2	16,19,19	2.74	7 (43%)	24,29,29	2.59	6 (25%)

In the following table, the Chirals column lists the number of chiral outliers, the number of chiral centers analysed, the number of these observed in the model and the number defined in the Chemical Component Dictionary. Similar counts are reported in the Torsion and Rings columns. '-' means no outliers of that kind were identified.

Mol	Type	Chain	Res	Link	Chirals	Torsions	Rings
3	CDG	B	1207	2	-	2/2/39/39	0/2/2/2
3	CDG	D	1207	2	-	2/2/39/39	0/2/2/2
3	CDG	A	1207	2	-	2/2/39/39	0/2/2/2
3	CDG	C	1207	2	-	2/2/39/39	0/2/2/2

The worst 5 of 28 bond length outliers are listed below:

Mol	Chain	Res	Type	Atoms	Z	Observed(Å)	Ideal(Å)
3	B	1207	CDG	O6-C7	6.82	1.49	1.42
3	A	1207	CDG	O6-C7	6.81	1.49	1.42
3	C	1207	CDG	O6-C7	6.81	1.49	1.42
3	D	1207	CDG	O6-C7	6.80	1.49	1.42
3	A	1207	CDG	O4-C7	5.02	1.49	1.42

The worst 5 of 24 bond angle outliers are listed below:

Mol	Chain	Res	Type	Atoms	Z	Observed(°)	Ideal(°)
3	D	1207	CDG	O6-C7-C9	6.75	114.72	106.24

Continued on next page...

Continued from previous page...

Mol	Chain	Res	Type	Atoms	Z	Observed(°)	Ideal(°)
3	A	1207	CDG	O6-C7-C9	6.74	114.72	106.24
3	C	1207	CDG	O6-C7-C9	6.71	114.69	106.24
3	B	1207	CDG	O6-C7-C9	6.71	114.68	106.24
3	B	1207	CDG	C9-C7-C8	-6.29	100.84	111.11

There are no chirality outliers.

5 of 8 torsion outliers are listed below:

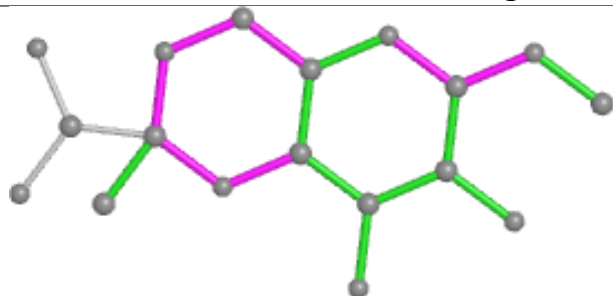
Mol	Chain	Res	Type	Atoms
3	B	1207	CDG	C2-C1-O1-C10
3	B	1207	CDG	O5-C1-O1-C10
3	C	1207	CDG	C2-C1-O1-C10
3	C	1207	CDG	O5-C1-O1-C10
3	A	1207	CDG	C2-C1-O1-C10

There are no ring outliers.

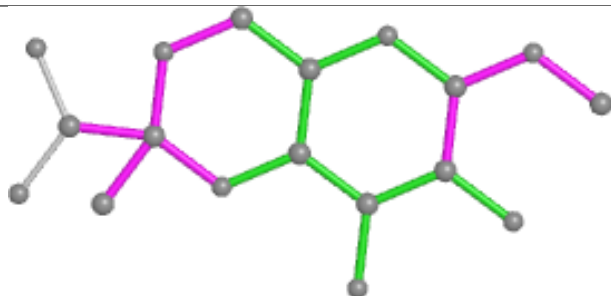
No monomer is involved in short contacts.

The following is a two-dimensional graphical depiction of Mogul quality analysis of bond lengths, bond angles, torsion angles, and ring geometry for all instances of the Ligand of Interest. In addition, ligands with molecular weight > 250 and outliers as shown on the validation Tables will also be included. For torsion angles, if less than 5% of the Mogul distribution of torsion angles is within 10 degrees of the torsion angle in question, then that torsion angle is considered an outlier. Any bond that is central to one or more torsion angles identified as an outlier by Mogul will be highlighted in the graph. For rings, the root-mean-square deviation (RMSD) between the ring in question and similar rings identified by Mogul is calculated over all ring torsion angles. If the average RMSD is greater than 60 degrees and the minimal RMSD between the ring in question and any Mogul-identified rings is also greater than 60 degrees, then that ring is considered an outlier. The outliers are highlighted in purple. The color gray indicates Mogul did not find sufficient equivalents in the CSD to analyse the geometry.

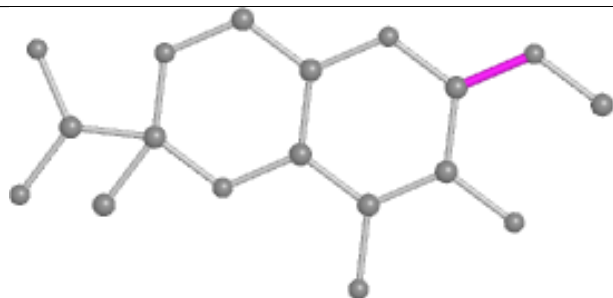
Ligand CDG B 1207



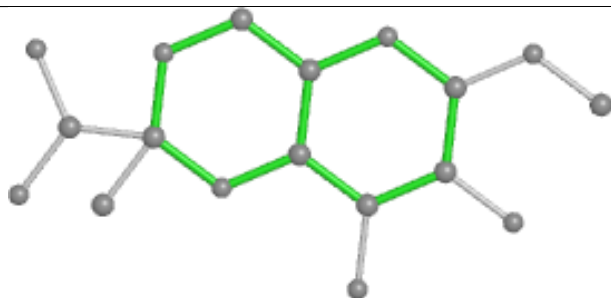
Bond lengths



Bond angles

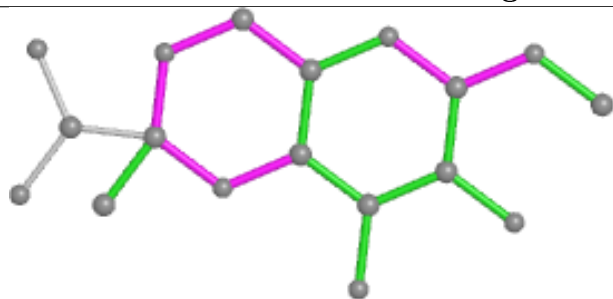


Torsions

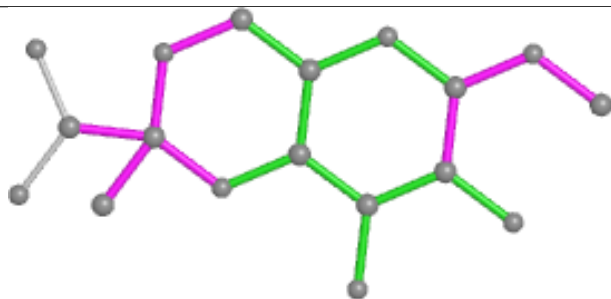


Rings

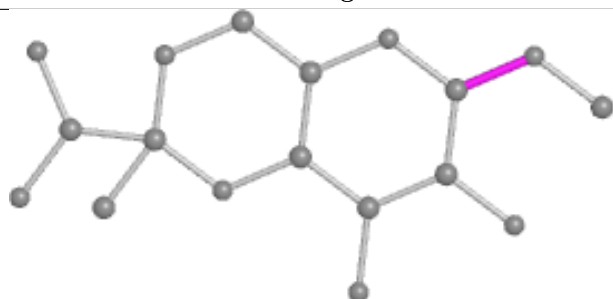
Ligand CDG D 1207



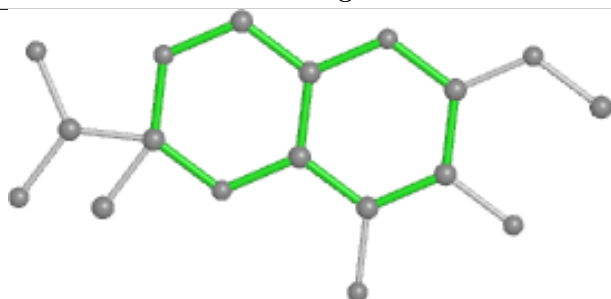
Bond lengths



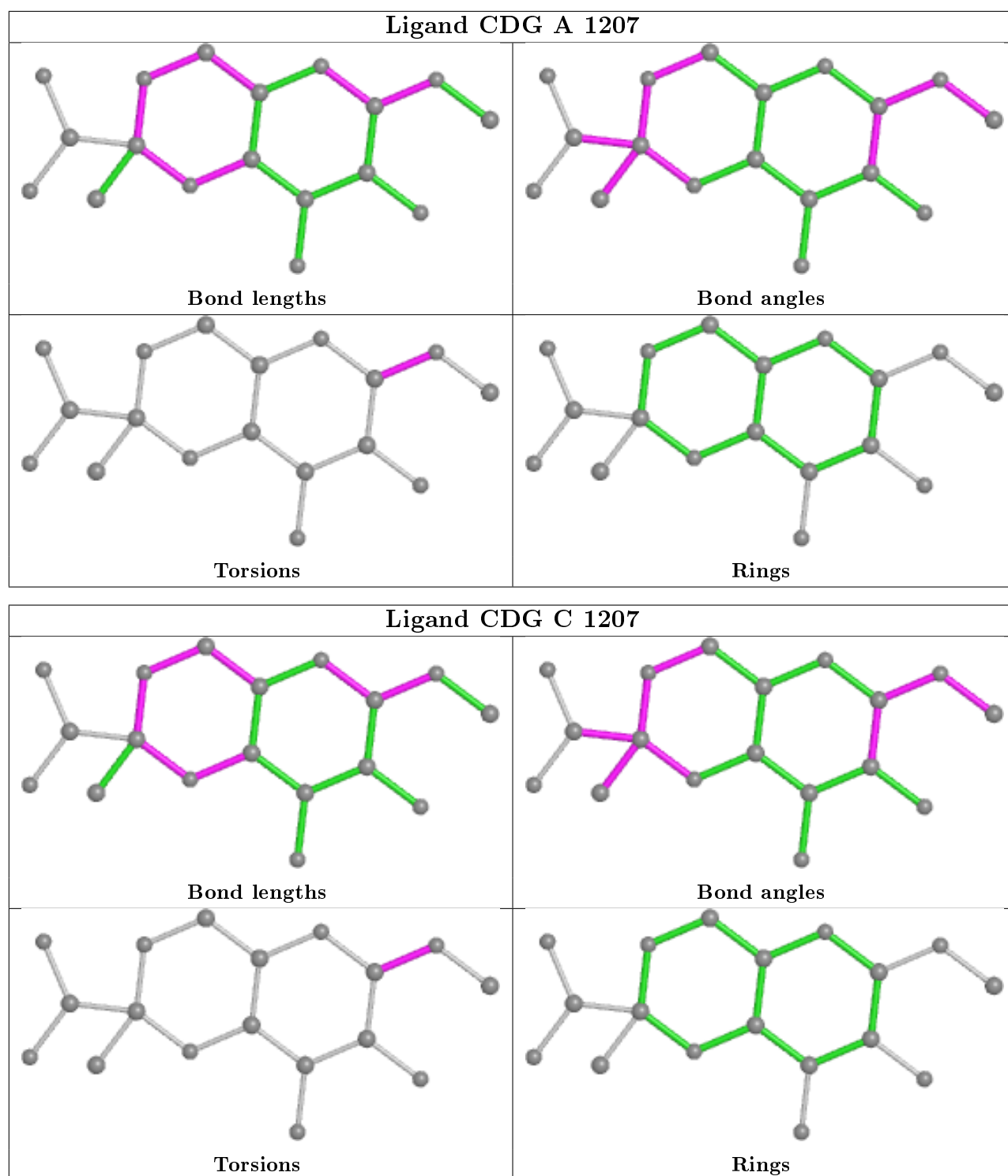
Bond angles



Torsions



Rings



5.7 Other polymers [i](#)

There are no such residues in this entry.

5.8 Polymer linkage issues

The following chains have linkage breaks:

Mol	Chain	Number of breaks
1	D	1

All chain breaks are listed below:

Model	Chain	Residue-1	Atom-1	Residue-2	Atom-2	Distance (Å)
1	D	15:SER	C	16:VAL	N	1.20

6 Fit of model and data ⓘ

6.1 Protein, DNA and RNA chains ⓘ

Unable to reproduce the depositors R factor - this section is therefore empty.

6.2 Non-standard residues in protein, DNA, RNA chains ⓘ

Unable to reproduce the depositors R factor - this section is therefore empty.

6.3 Carbohydrates ⓘ

Unable to reproduce the depositors R factor - this section is therefore empty.

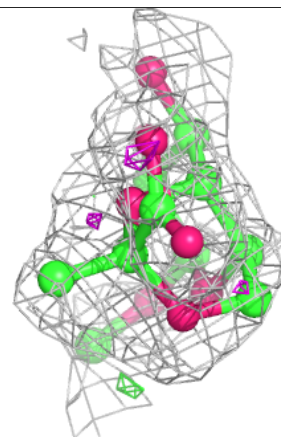
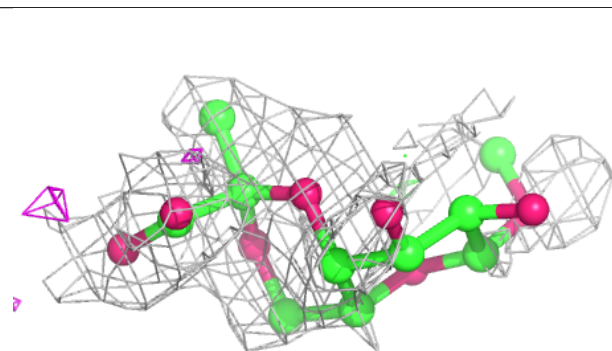
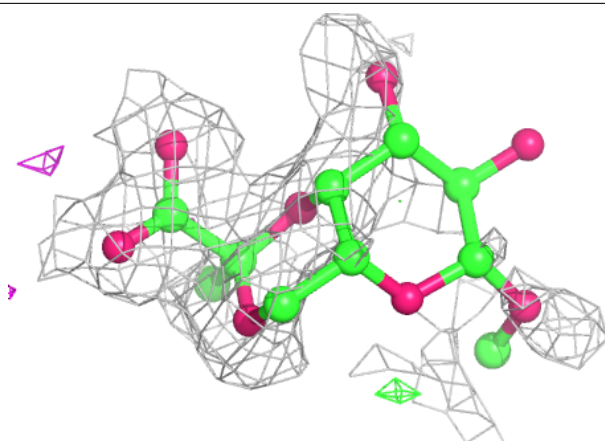
6.4 Ligands ⓘ

Unable to reproduce the depositors R factor - this section is therefore empty.

The following is a graphical depiction of the model fit to experimental electron density of all instances of the Ligand of Interest. In addition, ligands with molecular weight > 250 and outliers as shown on the geometry validation Tables will also be included. Each fit is shown from different orientation to approximate a three-dimensional view.

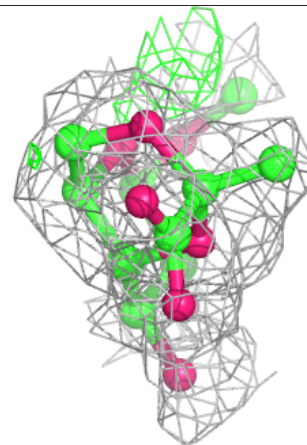
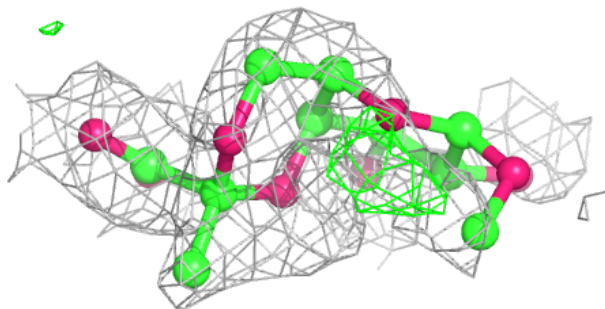
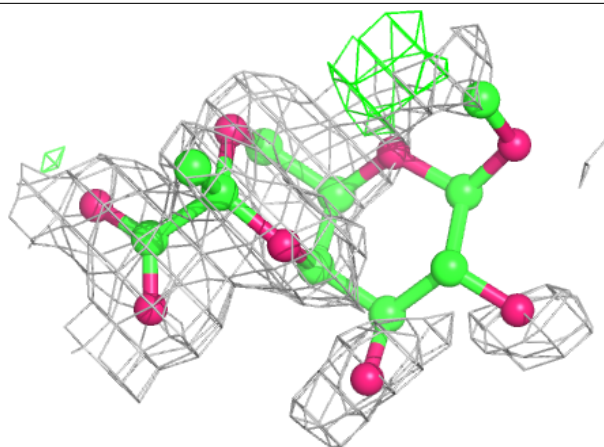
Electron density around CDG B 1207:

$2mF_o-DF_c$ (at 0.7 rmsd) in gray
 mF_o-DF_c (at 3 rmsd) in purple (negative)
and green (positive)



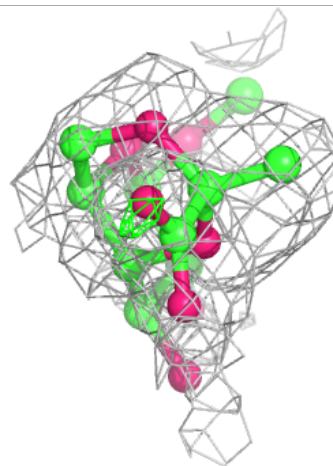
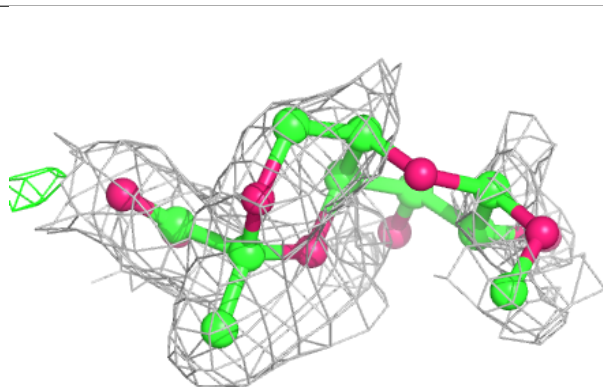
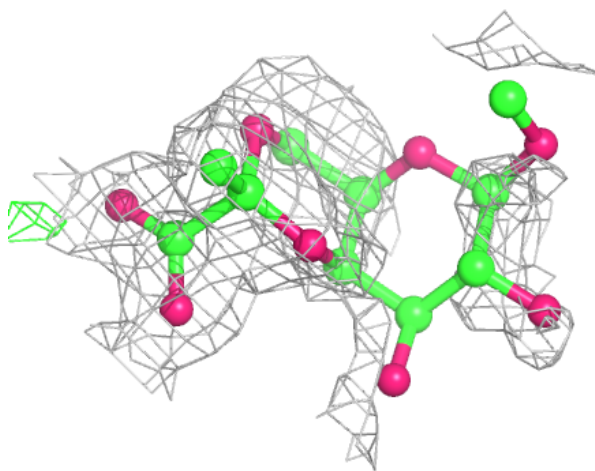
Electron density around CDG C 1207:

$2mF_o - DF_c$ (at 0.7 rmsd) in gray
 $mF_o - DF_c$ (at 3 rmsd) in purple (negative)
and green (positive)



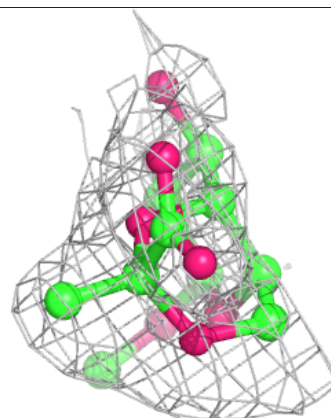
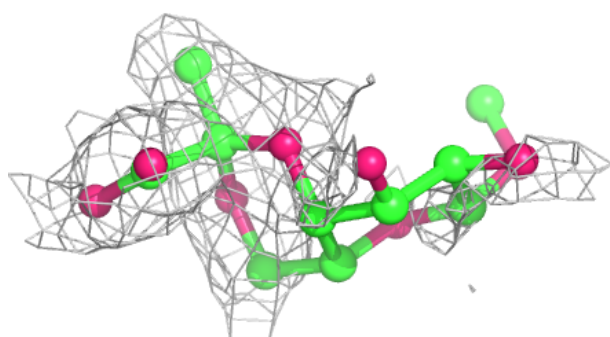
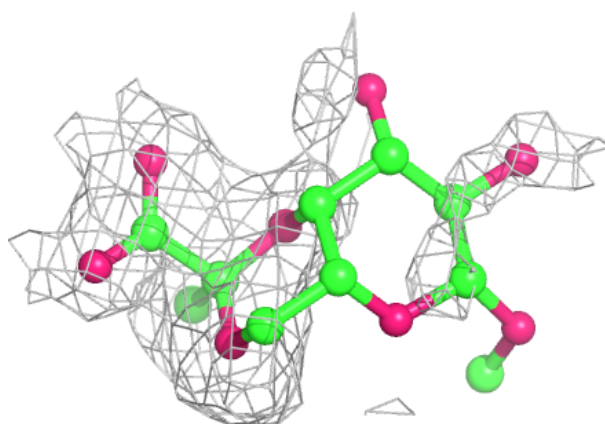
Electron density around CDG A 1207:

$2mF_o-DF_c$ (at 0.7 rmsd) in gray
 mF_o-DF_c (at 3 rmsd) in purple (negative)
and green (positive)



Electron density around CDG D 1207:

$2mF_o-DF_c$ (at 0.7 rmsd) in gray
 mF_o-DF_c (at 3 rmsd) in purple (negative)
and green (positive)



6.5 Other polymers [i](#)

Unable to reproduce the depositors R factor - this section is therefore empty.