



# Full wwPDB X-ray Structure Validation Report ⓘ

May 16, 2020 – 12:48 pm BST

PDB ID : 1GYO  
Title : Crystal structure of the di-tetraheme cytochrome c3 from *Desulfovibrio gigas* at 1.2 Angstrom resolution  
Authors : Aragao, D.; Frazao, C.; Sieker, L.; Sheldrick, G.M.; Legall, J.; Carrondo, M.A.  
Deposited on : 2002-04-29  
Resolution : 1.20 Å(reported)

This is a Full wwPDB X-ray Structure Validation Report for a publicly released PDB entry.

We welcome your comments at [validation@mail.wwpdb.org](mailto:validation@mail.wwpdb.org)

A user guide is available at

<https://www.wwpdb.org/validation/2017/XrayValidationReportHelp>

with specific help available everywhere you see the ⓘ symbol.

---

The following versions of software and data (see [references ⓘ](#)) were used in the production of this report:

MolProbity	:	4.02b-467
Mogul	:	1.8.5 (274361), CSD as541be (2020)
Xtriage (Phenix)	:	1.13
EDS	:	2.11
buster-report	:	1.1.7 (2018)
Percentile statistics	:	20191225.v01 (using entries in the PDB archive December 25th 2019)
Refmac	:	5.8.0158
CCP4	:	7.0.044 (Gargrove)
Ideal geometry (proteins)	:	Engh & Huber (2001)
Ideal geometry (DNA, RNA)	:	Parkinson et al. (1996)
Validation Pipeline (wwPDB-VP)	:	2.11

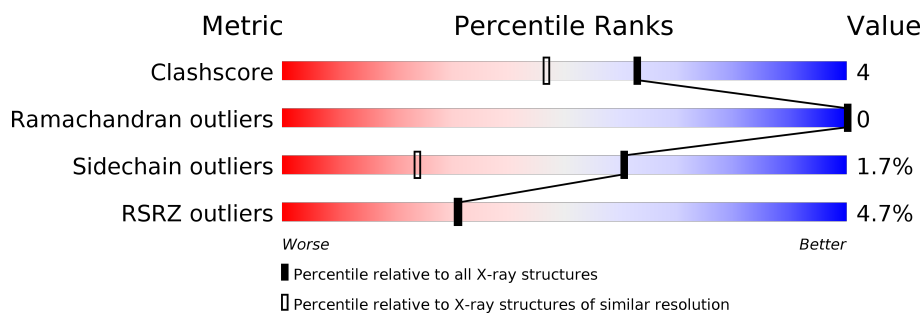
# 1 Overall quality at a glance

The following experimental techniques were used to determine the structure:

*X-RAY DIFFRACTION*

The reported resolution of this entry is 1.20 Å.

Percentile scores (ranging between 0-100) for global validation metrics of the entry are shown in the following graphic. The table shows the number of entries on which the scores are based.



Metric	Whole archive (#Entries)	Similar resolution (#Entries, resolution range(Å))
Clashscore	141614	1286 (1.22-1.18)
Ramachandran outliers	138981	1240 (1.22-1.18)
Sidechain outliers	138945	1239 (1.22-1.18)
RSRZ outliers	127900	1200 (1.22-1.18)

The table below summarises the geometric issues observed across the polymeric chains and their fit to the electron density. The red, orange, yellow and green segments on the lower bar indicate the fraction of residues that contain outliers for  $\geq 3$ , 2, 1 and 0 types of geometric quality criteria respectively. A grey segment represents the fraction of residues that are not modelled. The numeric value for each fraction is indicated below the corresponding segment, with a dot representing fractions  $\leq 5\%$ . The upper red bar (where present) indicates the fraction of residues that have poor fit to the electron density. The numeric value is given above the bar.

Mol	Chain	Length	Quality of chain
1	A	109	
1	B	109	

## 2 Entry composition [i](#)

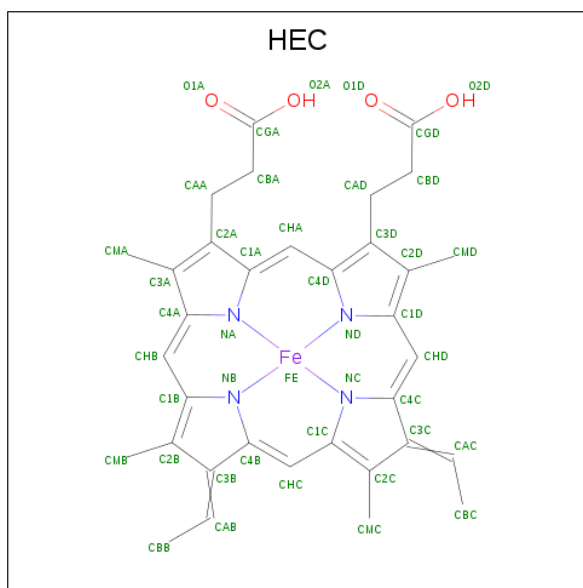
There are 4 unique types of molecules in this entry. The entry contains 2349 atoms, of which 0 are hydrogens and 0 are deuteriums.

In the tables below, the ZeroOcc column contains the number of atoms modelled with zero occupancy, the AltConf column contains the number of residues with at least one atom in alternate conformation and the Trace column contains the number of residues modelled with at most 2 atoms.

- Molecule 1 is a protein called CYTOCHROME C3, A DIMERIC CLASS III C-TYPE CYTOCHROME.

Mol	Chain	Residues	Atoms					ZeroOcc	AltConf	Trace
1	A	106	Total	C	N	O	S	0	11	0
			861	524	164	160	13			
1	B	106	Total	C	N	O	S	0	6	0
			847	515	162	157	13			

- Molecule 2 is HEME C (three-letter code: HEC) (formula:  $C_{34}H_{34}FeN_4O_4$ ).



Mol	Chain	Residues	Atoms					ZeroOcc	AltConf
2	A	1	Total	C	Fe	N	O	0	0
			43	34	1	4	4		
2	A	1	Total	C	Fe	N	O	0	0
			43	34	1	4	4		
2	A	1	Total	C	Fe	N	O	0	1
			47	36	1	4	6		
2	A	1	Total	C	Fe	N	O	0	0
			43	34	1	4	4		

*Continued on next page...*

Continued from previous page...

Mol	Chain	Residues	Atoms					ZeroOcc	AltConf
2	B	1	Total	C	Fe	N	O	0	0
			43	34	1	4	4		
2	B	1	Total	C	Fe	N	O	0	0
			43	34	1	4	4		
2	B	1	Total	C	Fe	N	O	0	0
			43	34	1	4	4		
2	B	1	Total	C	Fe	N	O	0	0
			43	34	1	4	4		

- Molecule 3 is GLYCEROL (three-letter code: GOL) (formula:  $C_3H_8O_3$ ).



Mol	Chain	Residues	Atoms			ZeroOcc	AltConf
3	B	1	Total	C	O	0	0
			6	3	3		
3	B	1	Total	C	O	0	1
			7	3	4		

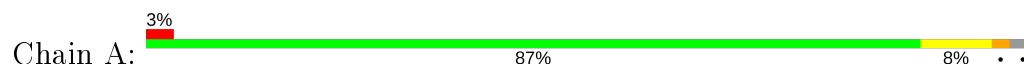
- Molecule 4 is water.

Mol	Chain	Residues	Atoms		ZeroOcc	AltConf
4	A	139	Total	O	0	0
			139	139		
4	B	141	Total	O	0	0
			141	141		

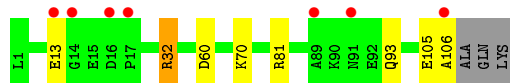
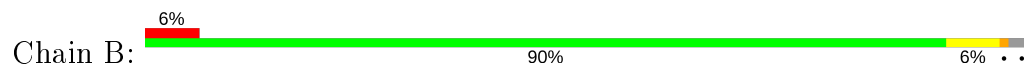
### 3 Residue-property plots [i](#)

These plots are drawn for all protein, RNA and DNA chains in the entry. The first graphic for a chain summarises the proportions of the various outlier classes displayed in the second graphic. The second graphic shows the sequence view annotated by issues in geometry and electron density. Residues are color-coded according to the number of geometric quality criteria for which they contain at least one outlier: green = 0, yellow = 1, orange = 2 and red = 3 or more. A red dot above a residue indicates a poor fit to the electron density ( $RSRZ > 2$ ). Stretches of 2 or more consecutive residues without any outlier are shown as a green connector. Residues present in the sample, but not in the model, are shown in grey.

- Molecule 1: CYTOCHROME C3, A DIMERIC CLASS III C-TYPE CYTOCHROME



- Molecule 1: CYTOCHROME C3, A DIMERIC CLASS III C-TYPE CYTOCHROME



## 4 Data and refinement statistics

Property	Value	Source
Space group	P 31	Depositor
Cell constants a, b, c, $\alpha$ , $\beta$ , $\gamma$	56.67Å 56.67Å 94.17Å 90.00° 90.00° 120.00°	Depositor
Resolution (Å)	26.50 – 1.20 26.44 – 1.20	Depositor EDS
% Data completeness (in resolution range)	98.9 (26.50-1.20) 95.6 (26.44-1.20)	Depositor EDS
$R_{merge}$	0.10	Depositor
$R_{sym}$	(Not available)	Depositor
$\langle I/\sigma(I) \rangle$ <sup>1</sup>	2.35 (at 1.20Å)	Xtriage
Refinement program	SHELXL-97	Depositor
R, $R_{free}$	0.131 , 0.157 0.134 , (Not available)	Depositor DCC
$R_{free}$ test set	No test flags present.	wwPDB-VP
Wilson B-factor (Å <sup>2</sup> )	12.5	Xtriage
Anisotropy	0.222	Xtriage
Bulk solvent $k_{sol}$ (e/Å <sup>3</sup> ), $B_{sol}$ (Å <sup>2</sup> )	0.40 , 63.5	EDS
L-test for twinning <sup>2</sup>	$\langle  L  \rangle = 0.50$ , $\langle L^2 \rangle = 0.33$	Xtriage
Estimated twinning fraction	0.007 for -h,-k,l 0.033 for h,-h-k,-l 0.019 for -k,-h,-l	Xtriage
$F_o, F_c$ correlation	0.98	EDS
Total number of atoms	2349	wwPDB-VP
Average B, all atoms (Å <sup>2</sup> )	22.0	wwPDB-VP

Xtriage's analysis on translational NCS is as follows: *The largest off-origin peak in the Patterson function is 5.71% of the height of the origin peak. No significant pseudotranslation is detected.*

<sup>1</sup>Intensities estimated from amplitudes.

<sup>2</sup>Theoretical values of  $\langle |L| \rangle$ ,  $\langle L^2 \rangle$  for acentric reflections are 0.5, 0.333 respectively for untwinned datasets, and 0.375, 0.2 for perfectly twinned datasets.

## 5 Model quality ⓘ

### 5.1 Standard geometry ⓘ

Bond lengths and bond angles in the following residue types are not validated in this section: GOL, HEC

The Z score for a bond length (or angle) is the number of standard deviations the observed value is removed from the expected value. A bond length (or angle) with  $|Z| > 5$  is considered an outlier worth inspection. RMSZ is the root-mean-square of all Z scores of the bond lengths (or angles).

Mol	Chain	Bond lengths		Bond angles	
		RMSZ	$\# Z  > 5$	RMSZ	$\# Z  > 5$
1	A	0.72	0/942	1.75	13/1261 (1.0%)
1	B	0.70	0/901	1.32	5/1206 (0.4%)
All	All	0.71	0/1843	1.55	18/2467 (0.7%)

There are no bond length outliers.

All (18) bond angle outliers are listed below:

Mol	Chain	Res	Type	Atoms	Z	Observed(°)	Ideal(°)
1	A	32[A]	ARG	CD-NE-CZ	30.35	166.09	123.60
1	A	32[B]	ARG	CD-NE-CZ	30.35	166.09	123.60
1	B	32	ARG	NE-CZ-NH2	12.45	126.53	120.30
1	B	32	ARG	CD-NE-CZ	11.42	139.59	123.60
1	B	81	ARG	NE-CZ-NH2	-10.71	114.94	120.30
1	B	60	ASP	CB-CG-OD2	10.53	127.77	118.30
1	A	66	ARG	NE-CZ-NH2	-9.61	115.50	120.30
1	A	75	GLU	CB-CG-CD	8.18	136.29	114.20
1	A	32[A]	ARG	NE-CZ-NH2	7.79	124.19	120.30
1	A	32[B]	ARG	NE-CZ-NH2	7.79	124.19	120.30
1	B	32	ARG	NE-CZ-NH1	-7.49	116.55	120.30
1	A	16	ASP	CB-CG-OD2	-6.93	112.06	118.30
1	A	54	ASP	CB-CG-OD2	-5.74	113.13	118.30
1	A	32[A]	ARG	NH1-CZ-NH2	-5.73	113.09	119.40
1	A	32[B]	ARG	NH1-CZ-NH2	-5.73	113.09	119.40
1	A	75	GLU	OE1-CD-OE2	-5.65	116.52	123.30
1	A	49	PHE	CB-CG-CD1	-5.43	117.00	120.80
1	A	65	GLU	CG-CD-OE2	-5.17	107.95	118.30

There are no chirality outliers.

There are no planarity outliers.

## 5.2 Too-close contacts ⓘ

In the following table, the Non-H and H(model) columns list the number of non-hydrogen atoms and hydrogen atoms in the chain respectively. The H(added) column lists the number of hydrogen atoms added and optimized by MolProbity. The Clashes column lists the number of clashes within the asymmetric unit, whereas Symm-Clashes lists symmetry related clashes.

Mol	Chain	Non-H	H(model)	H(added)	Clashes	Symm-Clashes
1	A	861	0	796	6	0
1	B	847	0	786	3	0
2	A	176	0	98	5	0
2	B	172	0	120	4	0
3	B	13	0	14	0	0
4	A	139	0	0	1	0
4	B	141	0	0	1	0
All	All	2349	0	1814	16	0

The all-atom clashscore is defined as the number of clashes found per 1000 atoms (including hydrogen atoms). The all-atom clashscore for this structure is 4.

All (16) close contacts within the same asymmetric unit are listed below, sorted by their clash magnitude.

Atom-1	Atom-2	Interatomic distance (Å)	Clash overlap (Å)
2:B:113:HEC:HMC1	2:B:113:HEC:HBC3	1.81	0.61
2:B:114:HEC:HMC1	2:B:114:HEC:HBC3	1.84	0.58
2:A:114:HEC:HBC3	2:A:114:HEC:HMC1	1.84	0.58
1:A:53:ALA:O	1:A:57[A]:ILE:HG12	2.04	0.58
2:B:111:HEC:HBC3	2:B:111:HEC:HMC1	1.94	0.49
1:A:53:ALA:O	1:A:57[B]:ILE:HG23	2.14	0.47
2:B:112:HEC:HBC3	2:B:112:HEC:HMC1	1.97	0.46
1:A:49:PHE:CZ	2:A:111:HEC:HMB3	2.50	0.46
2:A:112:HEC:HBB3	2:A:112:HEC:HMB1	1.98	0.45
1:A:90:LYS:NZ	4:A:2107:HOH:O	2.50	0.44
2:A:111:HEC:HBC3	2:A:111:HEC:HMC1	1.99	0.44
2:A:112:HEC:HBC3	2:A:112:HEC:HMC1	1.99	0.43
1:B:105:GLU:O	1:B:106:ALA:HB3	2.20	0.41
1:A:44[A]:ASP:OD1	1:B:32:ARG:HD3	2.22	0.40
1:B:70[B]:LYS:NZ	4:B:2099:HOH:O	2.55	0.40

There are no symmetry-related clashes.



## 5.3 Torsion angles

### 5.3.1 Protein backbone

In the following table, the Percentiles column shows the percent Ramachandran outliers of the chain as a percentile score with respect to all X-ray entries followed by that with respect to entries of similar resolution.

The Analysed column shows the number of residues for which the backbone conformation was analysed, and the total number of residues.

Mol	Chain	Analysed	Favoured	Allowed	Outliers	Percentiles	
1	A	115/109 (106%)	111 (96%)	4 (4%)	0	100	100
1	B	110/109 (101%)	106 (96%)	4 (4%)	0	100	100
All	All	225/218 (103%)	217 (96%)	8 (4%)	0	100	100

There are no Ramachandran outliers to report.

### 5.3.2 Protein sidechains

In the following table, the Percentiles column shows the percent sidechain outliers of the chain as a percentile score with respect to all X-ray entries followed by that with respect to entries of similar resolution.

The Analysed column shows the number of residues for which the sidechain conformation was analysed, and the total number of residues.

Mol	Chain	Analysed	Rotameric	Outliers	Percentiles	
1	A	101/92 (110%)	100 (99%)	1 (1%)	76	47
1	B	96/92 (104%)	94 (98%)	2 (2%)	53	15
All	All	197/184 (107%)	194 (98%)	3 (2%)	60	29

All (3) residues with a non-rotameric sidechain are listed below:

Mol	Chain	Res	Type
1	A	75	GLU
1	B	13	GLU
1	B	93	GLN

Some sidechains can be flipped to improve hydrogen bonding and reduce clashes. There are no such sidechains identified.

### 5.3.3 RNA ⓘ

There are no RNA molecules in this entry.

## 5.4 Non-standard residues in protein, DNA, RNA chains ⓘ

There are no non-standard protein/DNA/RNA residues in this entry.

## 5.5 Carbohydrates ⓘ

There are no carbohydrates in this entry.

## 5.6 Ligand geometry ⓘ

12 ligands are modelled in this entry.

In the following table, the Counts columns list the number of bonds (or angles) for which Mogul statistics could be retrieved, the number of bonds (or angles) that are observed in the model and the number of bonds (or angles) that are defined in the Chemical Component Dictionary. The Link column lists molecule types, if any, to which the group is linked. The Z score for a bond length (or angle) is the number of standard deviations the observed value is removed from the expected value. A bond length (or angle) with  $|Z| > 2$  is considered an outlier worth inspection. RMSZ is the root-mean-square of all Z scores of the bond lengths (or angles).

Mol	Type	Chain	Res	Link	Bond lengths			Bond angles		
					Counts	RMSZ	$\# Z  > 2$	Counts	RMSZ	$\# Z  > 2$
2	HEC	B	111	1	26,50,50	1.50	2 (7%)	18,82,82	1.49	4 (22%)
2	HEC	A	111	1	26,50,50	1.51	2 (7%)	18,82,82	1.84	6 (33%)
3	GOL	B	115	-	5,5,5	1.40	0	5,5,5	0.57	0
3	GOL	B	116[B]	-	5,5,5	1.22	0	5,5,5	0.18	0
2	HEC	A	112	1	26,50,50	1.46	2 (7%)	18,82,82	1.69	7 (38%)
3	GOL	B	116[A]	-	5,5,5	1.24	0	5,5,5	0.21	0
2	HEC	A	114	1	26,50,50	1.52	2 (7%)	18,82,82	1.80	5 (27%)
2	HEC	B	113	1	26,50,50	1.59	2 (7%)	18,82,82	1.64	5 (27%)
2	HEC	A	113[B]	-	26,50,50	1.59	2 (7%)	18,82,82	1.65	6 (33%)
2	HEC	A	113[A]	-	26,50,50	1.59	2 (7%)	18,82,82	1.64	6 (33%)
2	HEC	B	112	1	26,50,50	1.38	2 (7%)	18,82,82	1.60	5 (27%)
2	HEC	B	114	1	26,50,50	1.64	2 (7%)	18,82,82	1.51	4 (22%)

In the following table, the Chirals column lists the number of chiral outliers, the number of chiral centers analysed, the number of these observed in the model and the number defined in the

Chemical Component Dictionary. Similar counts are reported in the Torsion and Rings columns.  
'-' means no outliers of that kind were identified.

Mol	Type	Chain	Res	Link	Chirals	Torsions	Rings
2	HEC	B	111	1	-	0/6/54/54	-
2	HEC	A	111	1	-	0/6/54/54	-
3	GOL	B	115	-	-	0/4/4/4	-
3	GOL	B	116[B]	-	-	0/4/4/4	-
2	HEC	A	112	1	-	0/6/54/54	-
3	GOL	B	116[A]	-	-	2/4/4/4	-
2	HEC	A	114	1	-	0/6/54/54	-
2	HEC	B	113	1	-	0/6/54/54	-
2	HEC	A	113[B]	-	-	0/6/54/54	-
2	HEC	A	113[A]	-	-	0/6/54/54	-
2	HEC	B	112	1	-	0/6/54/54	-
2	HEC	B	114	1	-	0/6/54/54	-

All (18) bond length outliers are listed below:

Mol	Chain	Res	Type	Atoms	Z	Observed(Å)	Ideal(Å)
2	B	114	HEC	C3B-C2B	-5.03	1.35	1.40
2	A	111	HEC	C3C-C2C	-5.00	1.35	1.40
2	A	113[B]	HEC	C3C-C2C	-4.87	1.35	1.40
2	A	113[A]	HEC	C3C-C2C	-4.87	1.35	1.40
2	B	113	HEC	C3C-C2C	-4.64	1.35	1.40
2	B	111	HEC	C3B-C2B	-4.58	1.36	1.40
2	B	114	HEC	C3C-C2C	-4.56	1.36	1.40
2	A	113[B]	HEC	C3B-C2B	-4.55	1.36	1.40
2	A	113[A]	HEC	C3B-C2B	-4.55	1.36	1.40
2	B	113	HEC	C3B-C2B	-4.50	1.36	1.40
2	A	112	HEC	C3C-C2C	-4.47	1.36	1.40
2	A	114	HEC	C3B-C2B	-4.34	1.36	1.40
2	A	114	HEC	C3C-C2C	-4.26	1.36	1.40
2	A	112	HEC	C3B-C2B	-4.21	1.36	1.40
2	B	111	HEC	C3C-C2C	-3.98	1.36	1.40
2	B	112	HEC	C3B-C2B	-3.73	1.36	1.40
2	B	112	HEC	C3C-C2C	-3.64	1.36	1.40
2	A	111	HEC	C3B-C2B	-3.37	1.37	1.40

All (48) bond angle outliers are listed below:

Mol	Chain	Res	Type	Atoms	Z	Observed(°)	Ideal(°)
2	A	111	HEC	CMC-C2C-C3C	4.05	130.59	125.82
2	A	114	HEC	CMB-C2B-C3B	3.70	130.17	125.82

*Continued on next page...*

*Continued from previous page...*

Mol	Chain	Res	Type	Atoms	Z	Observed(°)	Ideal(°)
2	B	113	HEC	CMC-C2C-C3C	3.44	129.87	125.82
2	A	113[B]	HEC	CMC-C2C-C3C	3.40	129.82	125.82
2	A	113[A]	HEC	CMC-C2C-C3C	3.40	129.82	125.82
2	A	114	HEC	CMC-C2C-C3C	3.35	129.76	125.82
2	A	111	HEC	CMC-C2C-C1C	-3.22	123.52	128.46
2	A	114	HEC	CMB-C2B-C1B	-3.18	123.57	128.46
2	A	113[B]	HEC	CMC-C2C-C1C	-3.18	123.58	128.46
2	A	113[A]	HEC	CMC-C2C-C1C	-3.18	123.58	128.46
2	B	113	HEC	CMC-C2C-C1C	-3.10	123.69	128.46
2	A	114	HEC	CMC-C2C-C1C	-3.09	123.72	128.46
2	B	114	HEC	CMB-C2B-C3B	3.07	129.43	125.82
2	B	112	HEC	CMC-C2C-C3C	3.00	129.35	125.82
2	A	112	HEC	CMB-C2B-C3B	2.91	129.24	125.82
2	B	114	HEC	CMB-C2B-C1B	-2.89	124.02	128.46
2	A	112	HEC	CMD-C2D-C1D	-2.87	124.05	128.46
2	B	112	HEC	CMC-C2C-C1C	-2.87	124.06	128.46
2	B	111	HEC	CMB-C2B-C1B	-2.86	124.07	128.46
2	B	113	HEC	CMB-C2B-C1B	-2.78	124.19	128.46
2	B	113	HEC	CMB-C2B-C3B	2.76	129.06	125.82
2	A	112	HEC	CMC-C2C-C3C	2.69	128.99	125.82
2	A	112	HEC	CMC-C2C-C1C	-2.69	124.33	128.46
2	B	112	HEC	CMD-C2D-C1D	-2.65	124.39	128.46
2	A	112	HEC	CMB-C2B-C1B	-2.59	124.48	128.46
2	A	111	HEC	CAD-CBD-CGD	2.54	116.94	112.67
2	A	113[B]	HEC	CMD-C2D-C1D	-2.50	124.62	128.46
2	A	113[A]	HEC	CMD-C2D-C1D	-2.50	124.62	128.46
2	B	114	HEC	CMC-C2C-C3C	2.48	128.74	125.82
2	A	111	HEC	CMB-C2B-C1B	-2.48	124.66	128.46
2	A	113[B]	HEC	CMB-C2B-C1B	-2.47	124.67	128.46
2	A	113[A]	HEC	CMB-C2B-C1B	-2.47	124.67	128.46
2	B	111	HEC	CMD-C2D-C1D	-2.44	124.71	128.46
2	A	112	HEC	CMD-C2D-C3D	2.39	129.45	124.94
2	B	111	HEC	CMB-C2B-C3B	2.38	128.62	125.82
2	B	112	HEC	CMB-C2B-C1B	-2.36	124.83	128.46
2	B	114	HEC	CMC-C2C-C1C	-2.28	124.96	128.46
2	B	113	HEC	CMA-C3A-C2A	2.24	129.17	124.94
2	A	114	HEC	CMD-C2D-C1D	-2.21	125.06	128.46
2	A	113[B]	HEC	CMB-C2B-C3B	2.16	128.36	125.82
2	A	113[A]	HEC	CMB-C2B-C3B	2.16	128.36	125.82
2	B	112	HEC	CMB-C2B-C3B	2.15	128.35	125.82
2	A	113[B]	HEC	CMD-C2D-C3D	2.12	128.94	124.94
2	A	113[A]	HEC	CMD-C2D-C3D	2.12	128.94	124.94

*Continued on next page...*

*Continued from previous page...*

Mol	Chain	Res	Type	Atoms	Z	Observed(°)	Ideal(°)
2	A	111	HEC	CMD-C2D-C1D	-2.12	125.21	128.46
2	B	111	HEC	CMC-C2C-C3C	2.05	128.23	125.82
2	A	112	HEC	CMA-C3A-C2A	2.01	128.74	124.94
2	A	111	HEC	CMB-C2B-C3B	2.00	128.17	125.82

There are no chirality outliers.

All (2) torsion outliers are listed below:

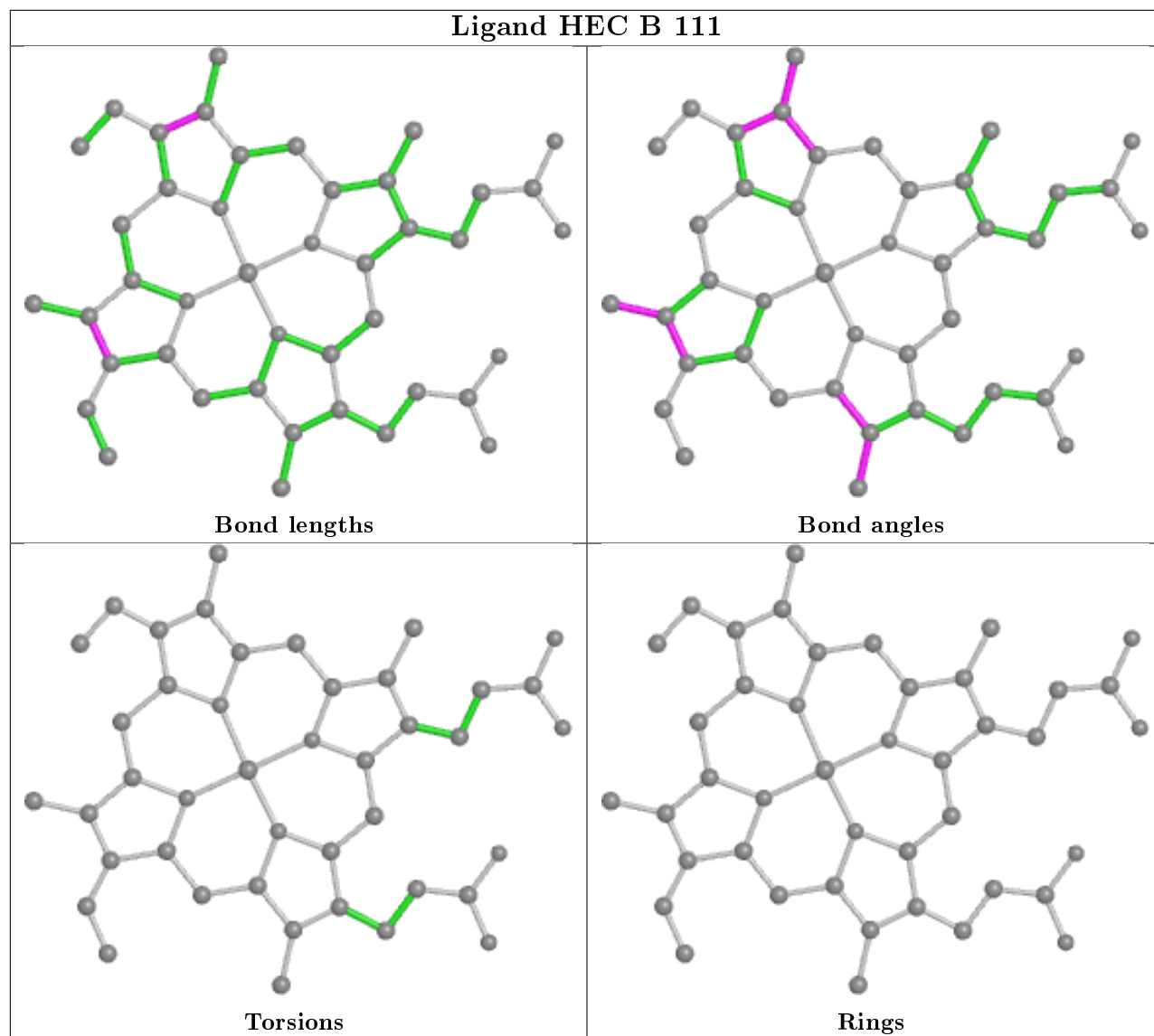
Mol	Chain	Res	Type	Atoms
3	B	116[A]	GOL	C1-C2-C3-O3
3	B	116[A]	GOL	O2-C2-C3-O3

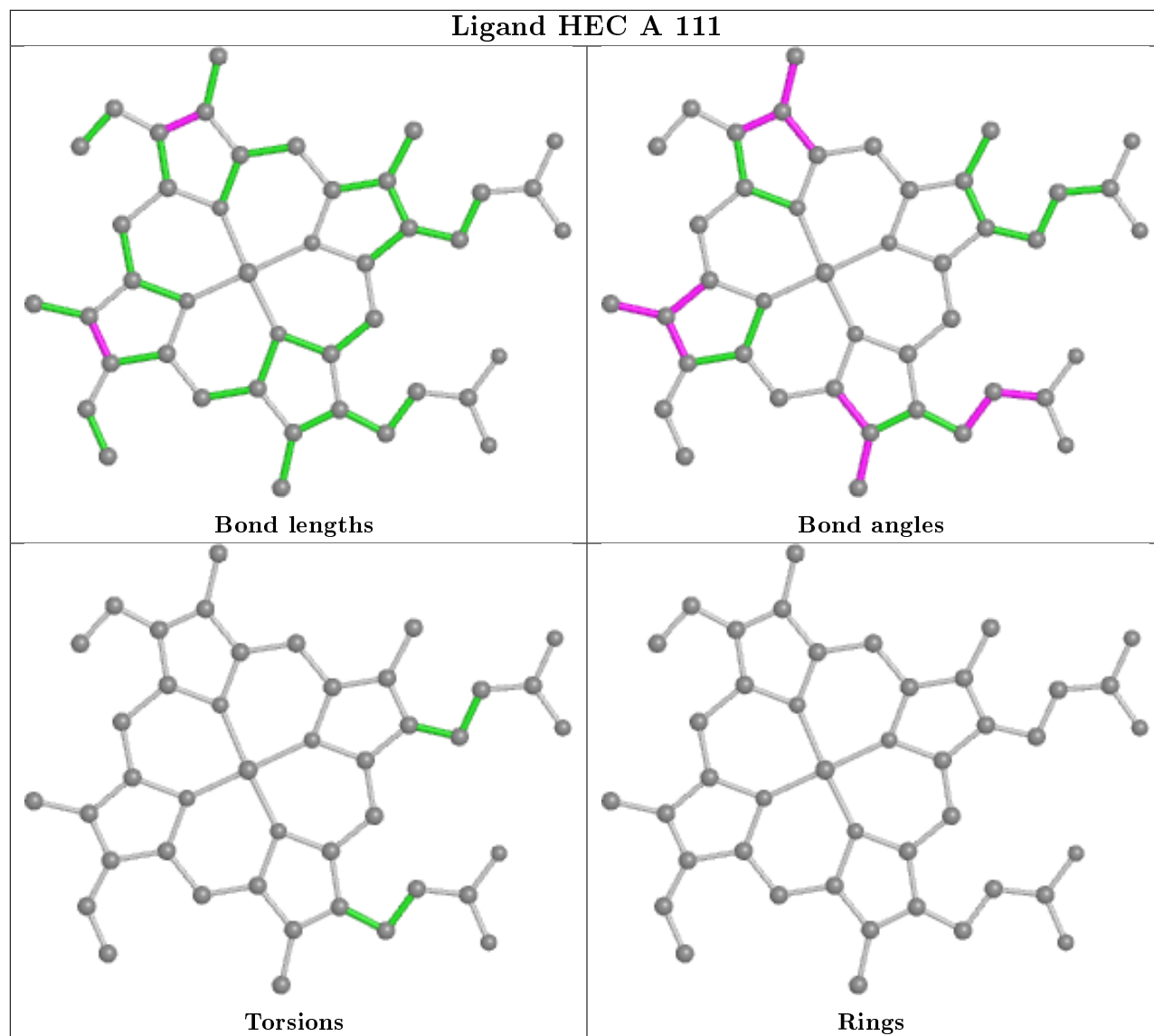
There are no ring outliers.

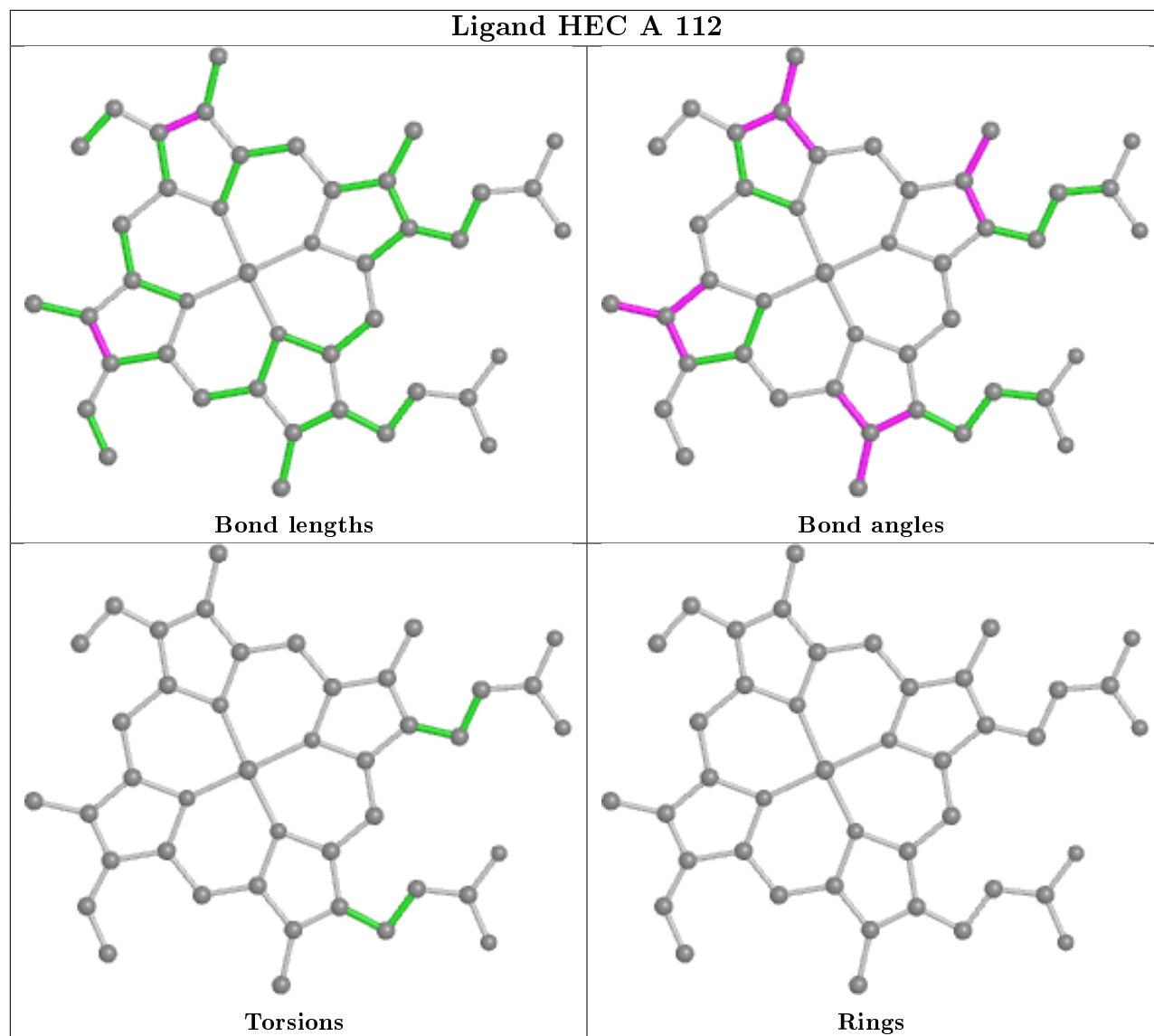
7 monomers are involved in 9 short contacts:

Mol	Chain	Res	Type	Clashes	Symm-Clashes
2	B	111	HEC	1	0
2	A	111	HEC	2	0
2	A	112	HEC	2	0
2	A	114	HEC	1	0
2	B	113	HEC	1	0
2	B	112	HEC	1	0
2	B	114	HEC	1	0

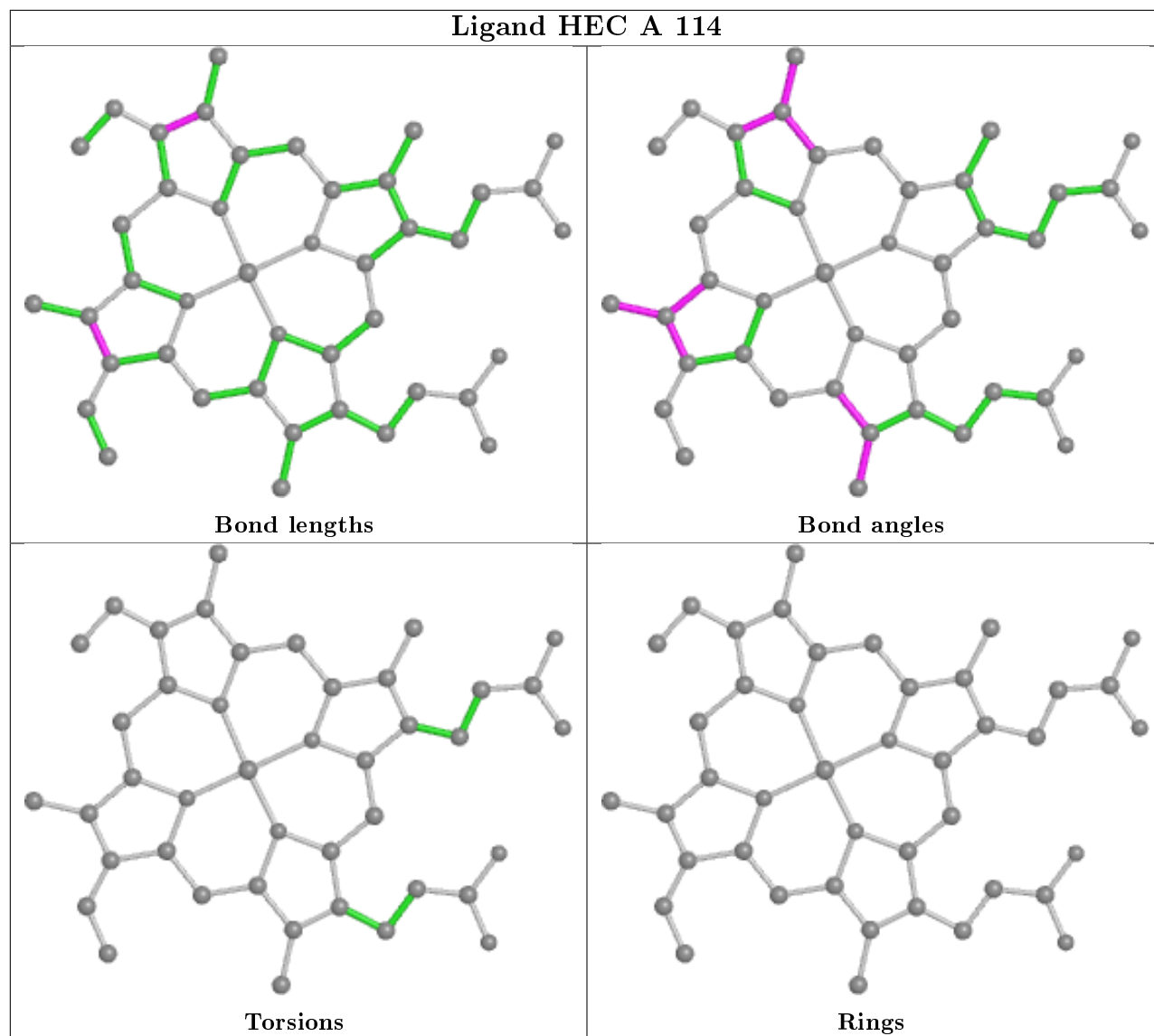
The following is a two-dimensional graphical depiction of Mogul quality analysis of bond lengths, bond angles, torsion angles, and ring geometry for all instances of the Ligand of Interest. In addition, ligands with molecular weight > 250 and outliers as shown on the validation Tables will also be included. For torsion angles, if less than 5% of the Mogul distribution of torsion angles is within 10 degrees of the torsion angle in question, then that torsion angle is considered an outlier. Any bond that is central to one or more torsion angles identified as an outlier by Mogul will be highlighted in the graph. For rings, the root-mean-square deviation (RMSD) between the ring in question and similar rings identified by Mogul is calculated over all ring torsion angles. If the average RMSD is greater than 60 degrees and the minimal RMSD between the ring in question and any Mogul-identified rings is also greater than 60 degrees, then that ring is considered an outlier. The outliers are highlighted in purple. The color gray indicates Mogul did not find sufficient equivalents in the CSD to analyse the geometry.

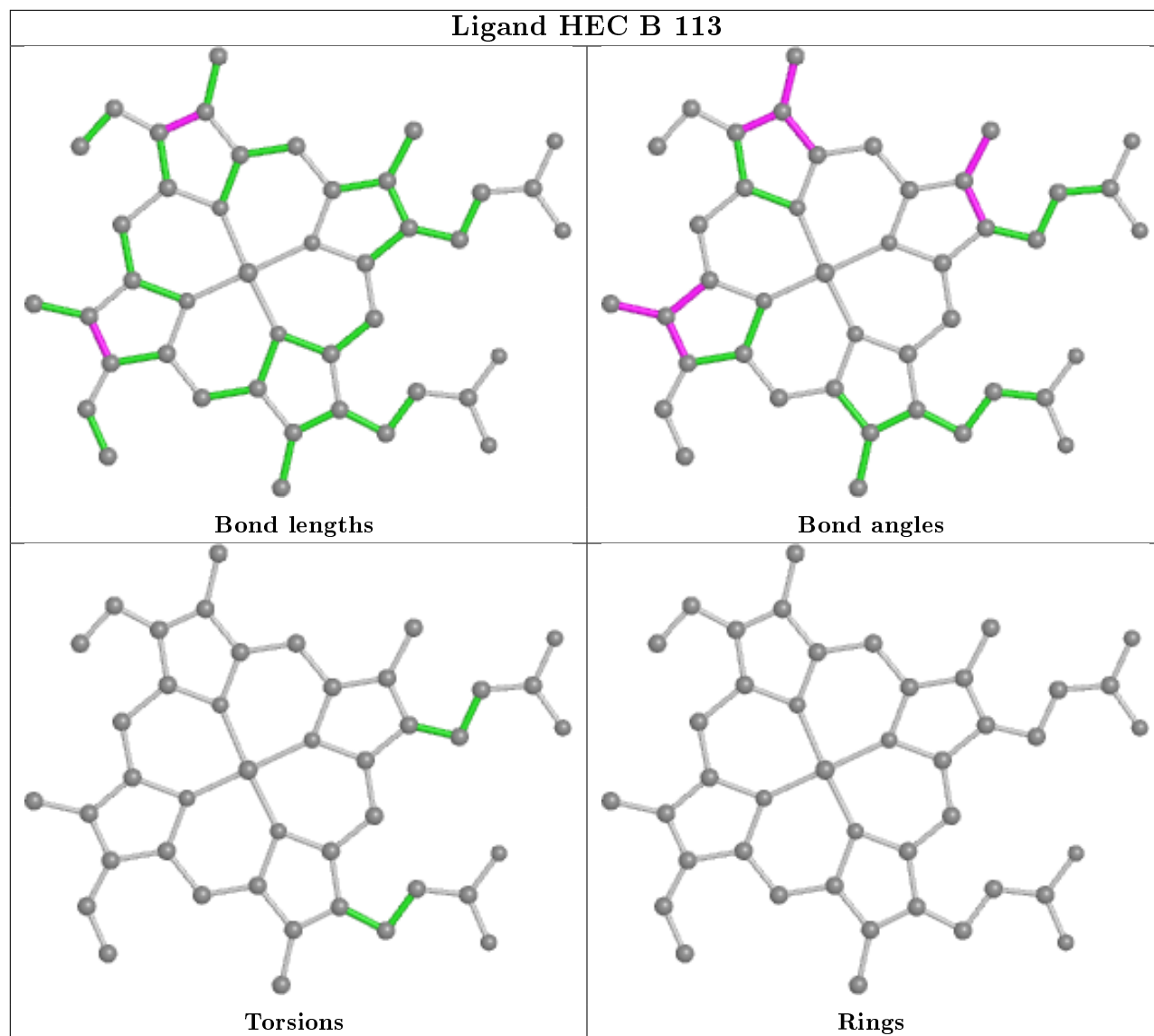




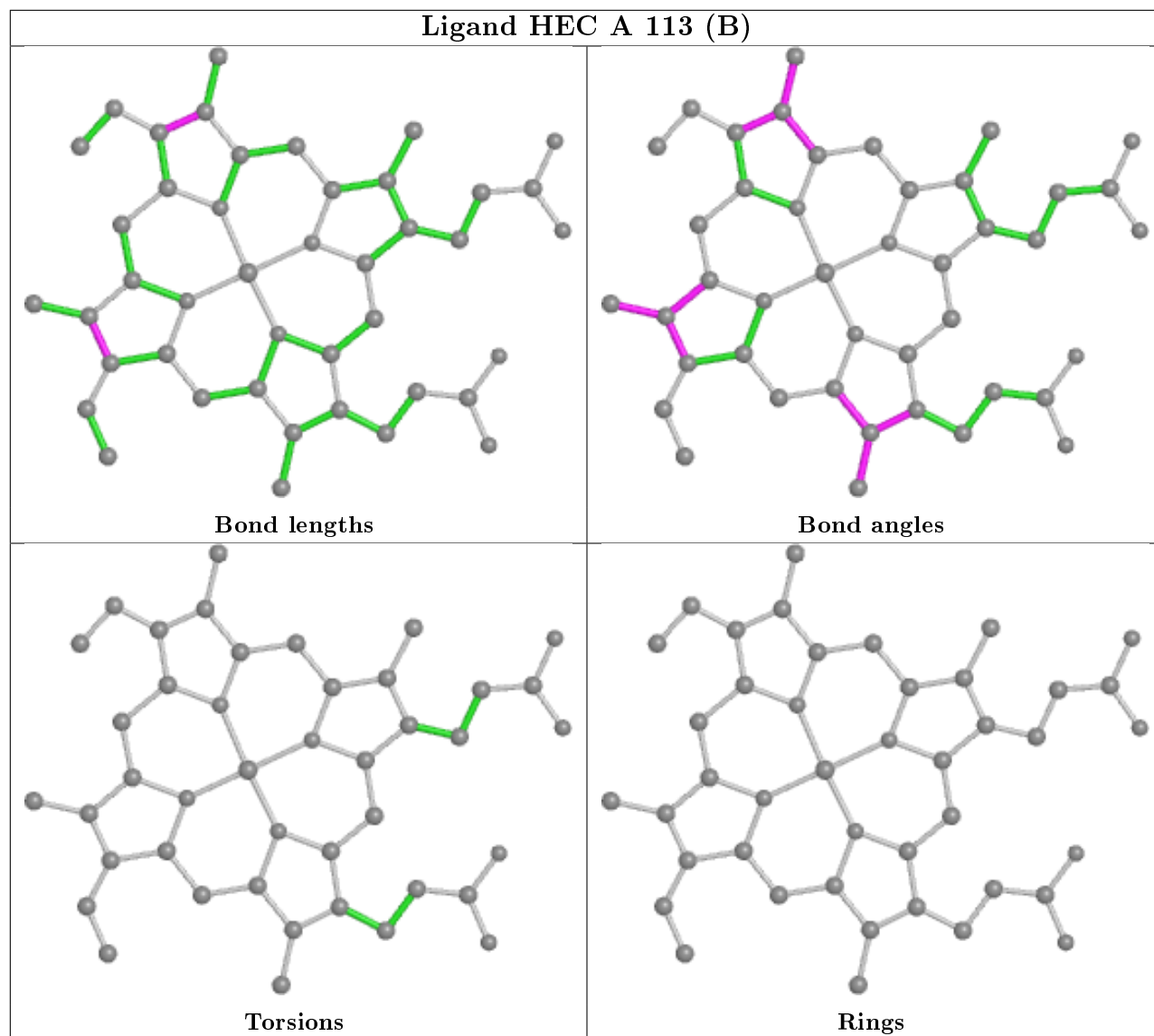




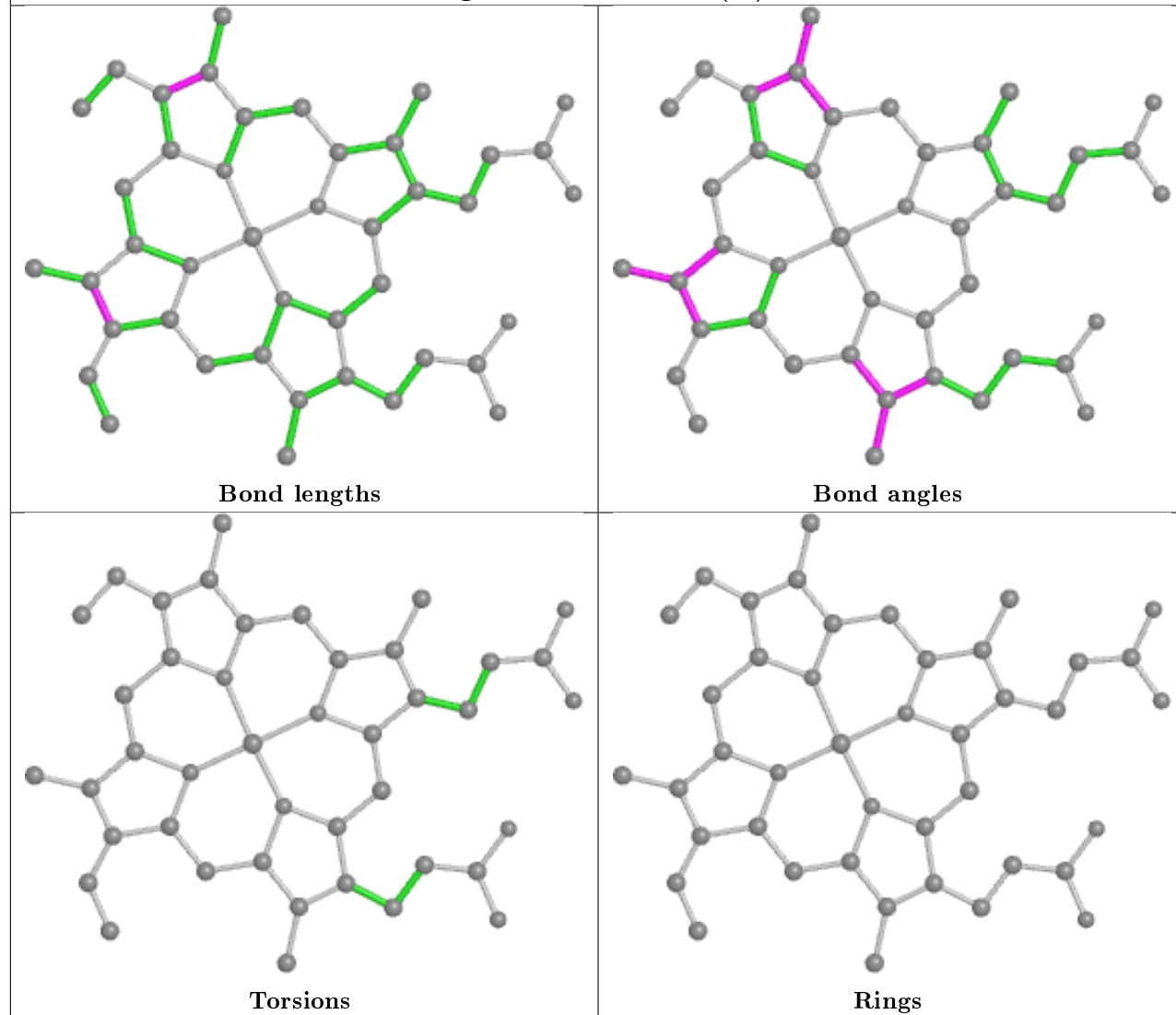


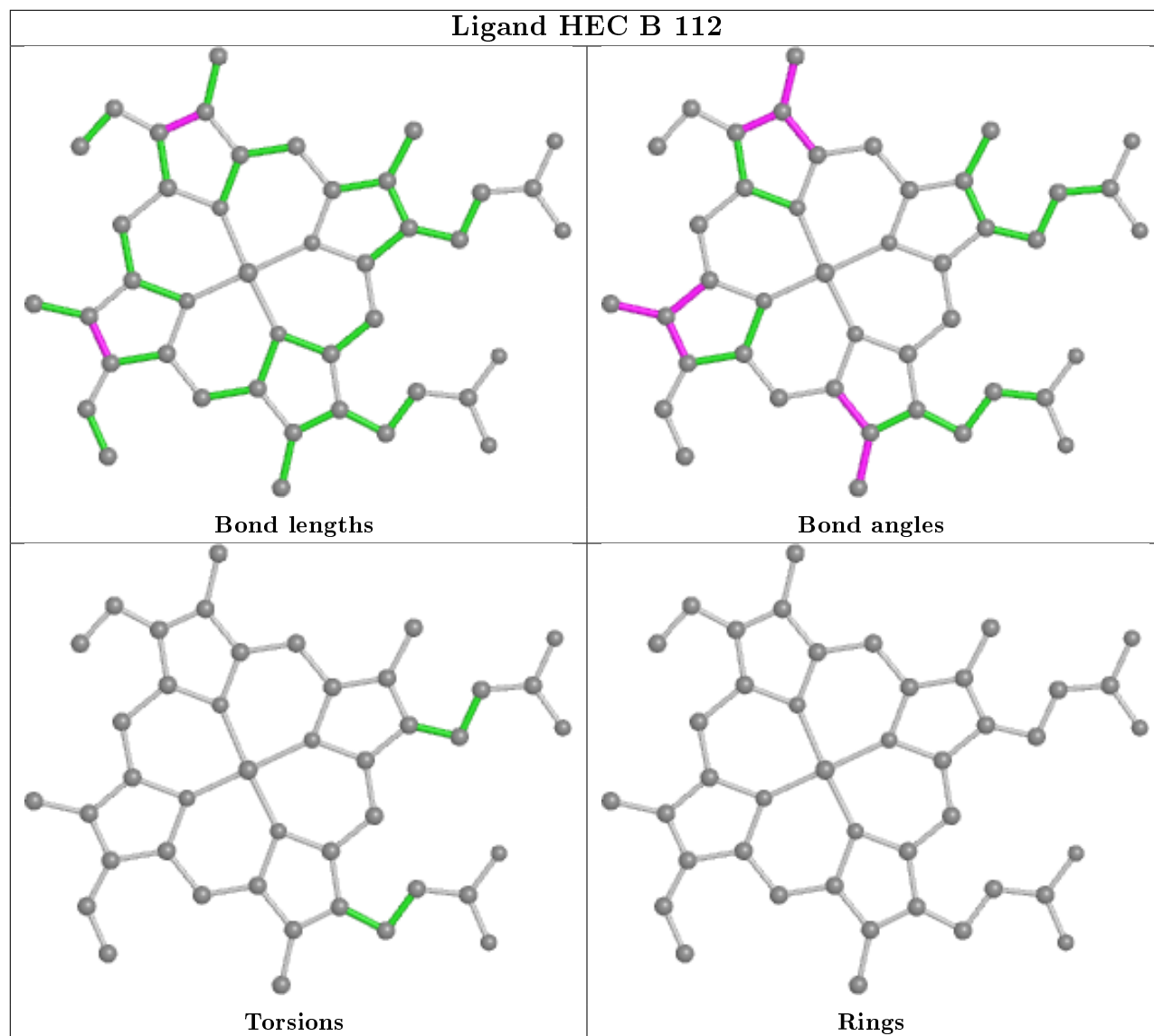


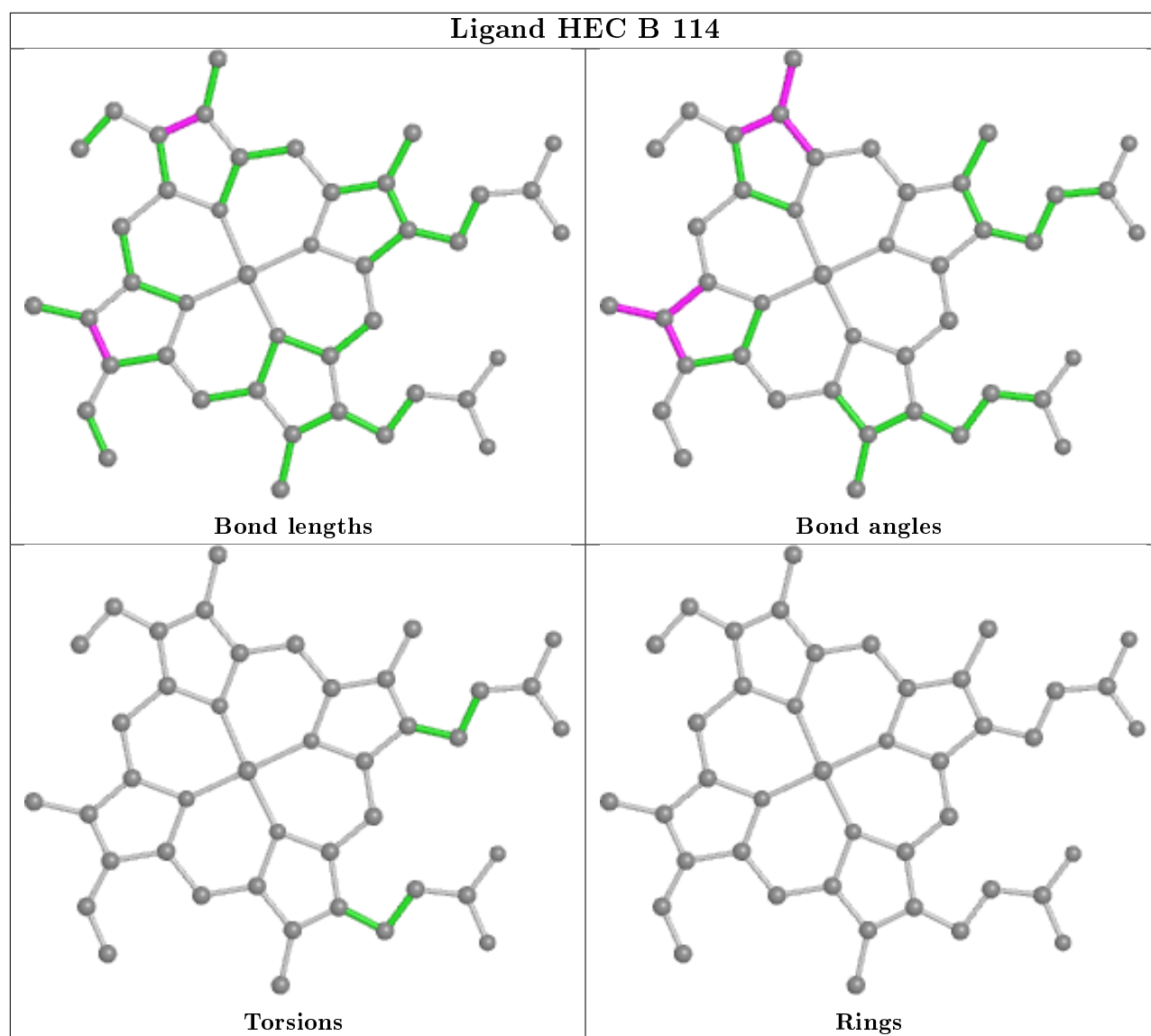
## Ligand HEC A 113 (B)



## Ligand HEC A 113 (A)







## 5.7 Other polymers [i](#)

There are no such residues in this entry.

## 5.8 Polymer linkage issues [i](#)

There are no chain breaks in this entry.

## 6 Fit of model and data [i](#)

### 6.1 Protein, DNA and RNA chains [i](#)

In the following table, the column labelled ‘#RSRZ> 2’ contains the number (and percentage) of RSRZ outliers, followed by percent RSRZ outliers for the chain as percentile scores relative to all X-ray entries and entries of similar resolution. The OWAB column contains the minimum, median, 95<sup>th</sup> percentile and maximum values of the occupancy-weighted average B-factor per residue. The column labelled ‘Q< 0.9’ lists the number of (and percentage) of residues with an average occupancy less than 0.9.

Mol	Chain	Analysed	<RSRZ>	#RSRZ>2	OWAB(Å <sup>2</sup> )	Q<0.9
1	A	106/109 (97%)	0.08	3 (2%) 53 51	11, 17, 36, 51	0
1	B	106/109 (97%)	0.33	7 (6%) 18 17	13, 19, 43, 73	0
All	All	212/218 (97%)	0.21	10 (4%) 31 31	11, 18, 41, 73	0

All (10) RSRZ outliers are listed below:

Mol	Chain	Res	Type	RSRZ
1	B	106	ALA	9.0
1	B	14	GLY	5.7
1	A	106	ALA	4.3
1	B	16	ASP	3.9
1	B	13	GLU	3.4
1	A	91[A]	ASN	3.1
1	B	17	PRO	3.1
1	B	91	ASN	2.8
1	A	14	GLY	2.5
1	B	89	ALA	2.3

### 6.2 Non-standard residues in protein, DNA, RNA chains [i](#)

There are no non-standard protein/DNA/RNA residues in this entry.

### 6.3 Carbohydrates [i](#)

There are no carbohydrates in this entry.

## 6.4 Ligands

In the following table, the Atoms column lists the number of modelled atoms in the group and the number defined in the chemical component dictionary. The B-factors column lists the minimum, median, 95<sup>th</sup> percentile and maximum values of B factors of atoms in the group. The column labelled 'Q< 0.9' lists the number of atoms with occupancy less than 0.9.

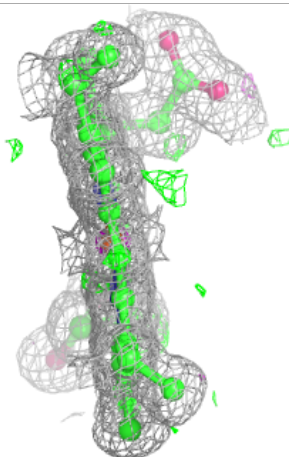
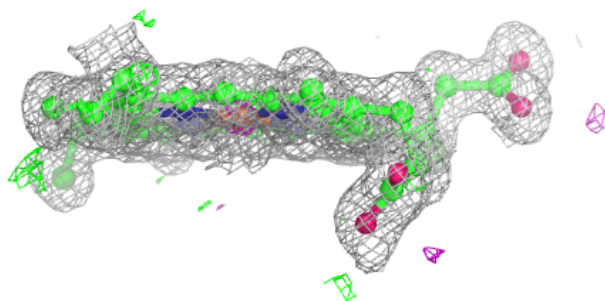
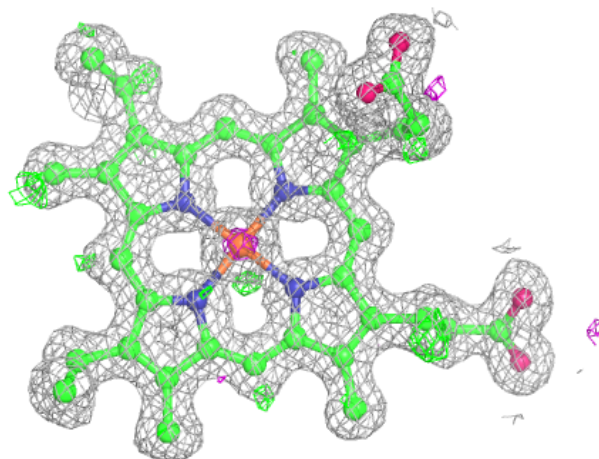
Mol	Type	Chain	Res	Atoms	RSCC	RSR	B-factors(Å <sup>2</sup> )	Q<0.9
3	GOL	B	116[B]	6/6	0.92	0.14	19,27,33,35	1
3	GOL	B	116[A]	6/6	0.92	0.14	22,31,35,48	1
2	HEC	A	112	43/43	0.98	0.08	11,13,18,27	0
3	GOL	B	115	6/6	0.98	0.07	17,17,18,20	0
2	HEC	B	113	43/43	0.98	0.09	13,16,40,66	0
2	HEC	B	112	43/43	0.98	0.08	12,13,24,35	0
2	HEC	A	114	43/43	0.99	0.09	10,11,13,15	0
2	HEC	B	111	43/43	0.99	0.07	11,13,15,30	0
2	HEC	A	113[B]	43/43	0.99	0.08	11,13,28,37	4
2	HEC	A	113[A]	43/43	0.99	0.08	11,13,27,37	4
2	HEC	A	111	43/43	0.99	0.08	10,12,22,33	0
2	HEC	B	114	43/43	0.99	0.08	12,14,17,18	0

The following is a graphical depiction of the model fit to experimental electron density of all instances of the Ligand of Interest. In addition, ligands with molecular weight > 250 and outliers as shown on the geometry validation Tables will also be included. Each fit is shown from different orientation to approximate a three-dimensional view.



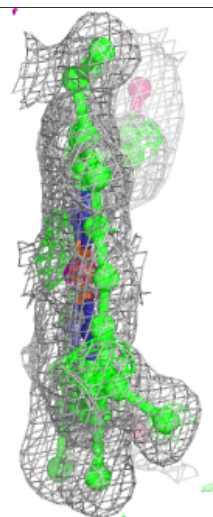
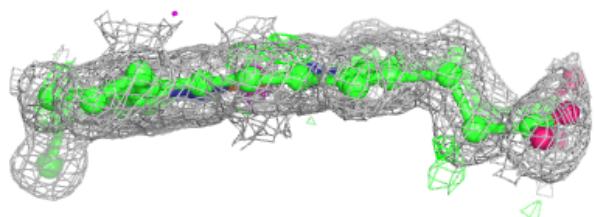
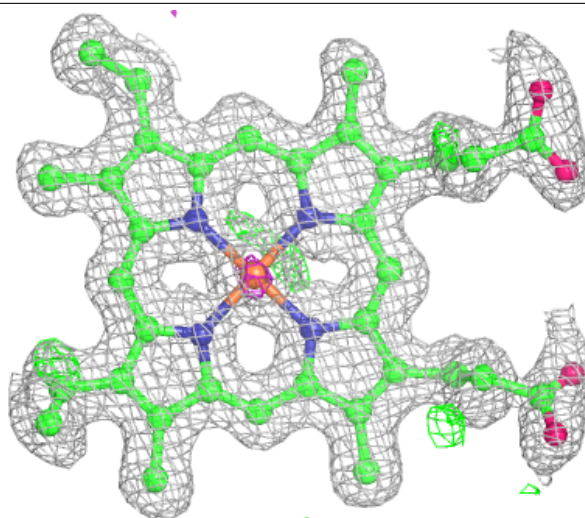
**Electron density around HEC A 112:**

$2mF_o-DF_c$  (at 0.7 rmsd) in gray  
 $mF_o-DF_c$  (at 3 rmsd) in purple (negative)  
and green (positive)



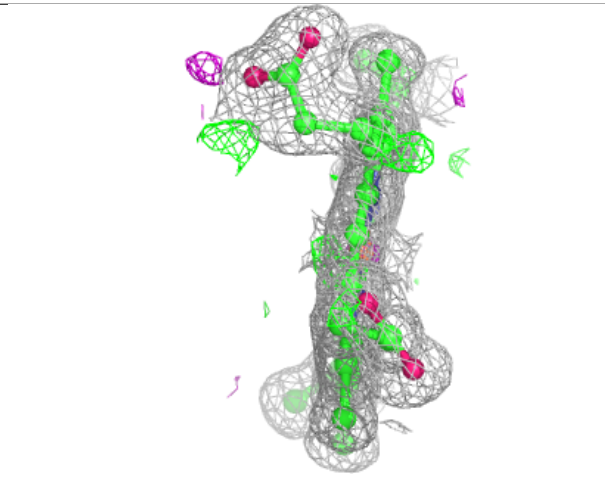
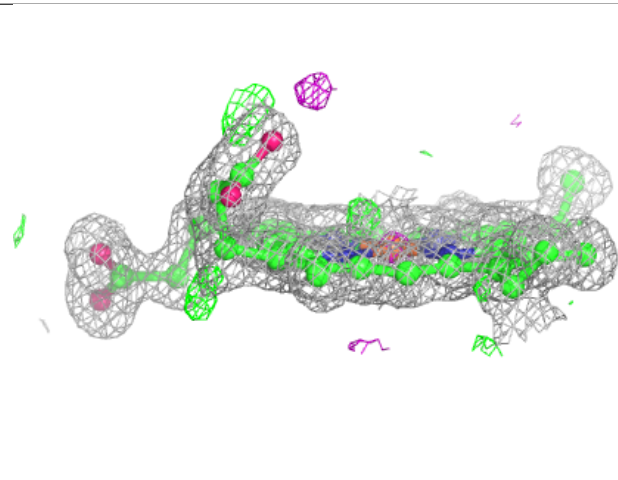
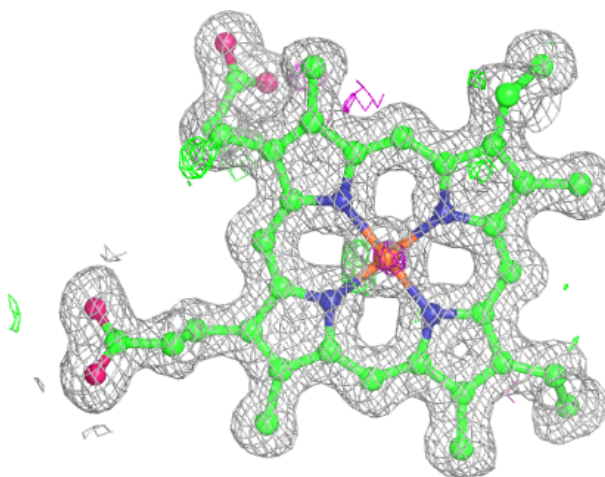
**Electron density around HEC B 113:**

$2mF_o-DF_c$  (at 0.7 rmsd) in gray  
 $mF_o-DF_c$  (at 3 rmsd) in purple (negative)  
and green (positive)



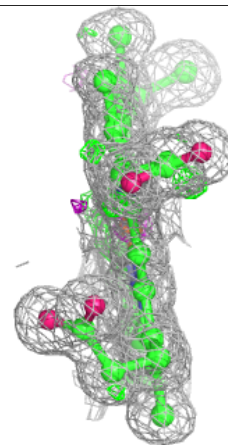
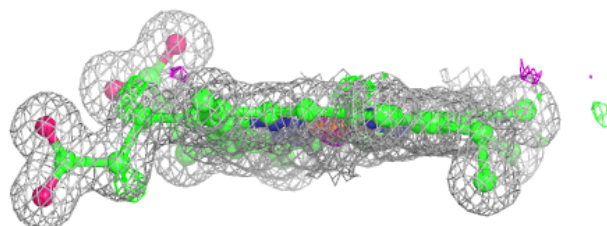
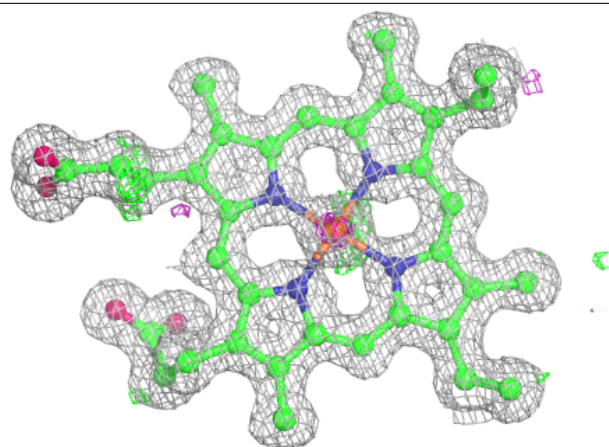
**Electron density around HEC B 112:**

$2mF_o-DF_c$  (at 0.7 rmsd) in gray  
 $mF_o-DF_c$  (at 3 rmsd) in purple (negative)  
and green (positive)



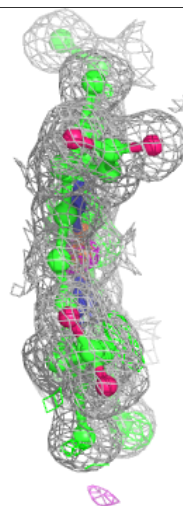
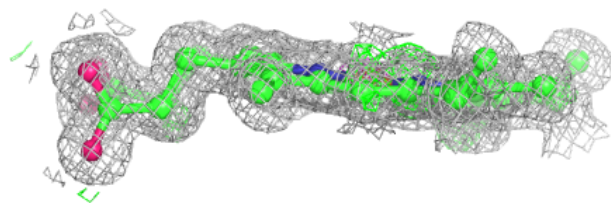
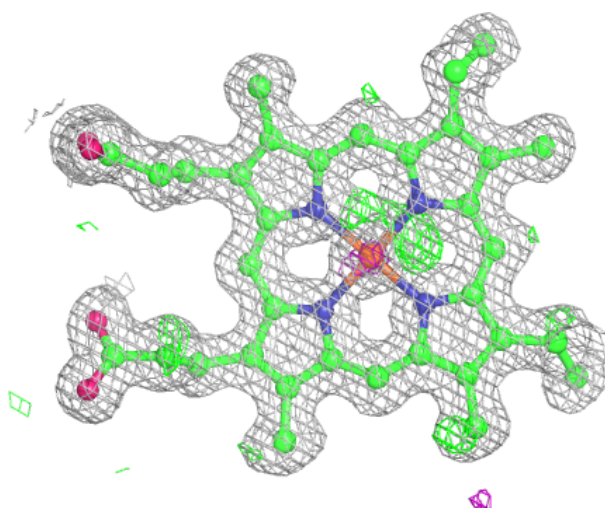
**Electron density around HEC A 114:**

$2mF_o-DF_c$  (at 0.7 rmsd) in gray  
 $mF_o-DF_c$  (at 3 rmsd) in purple (negative)  
and green (positive)



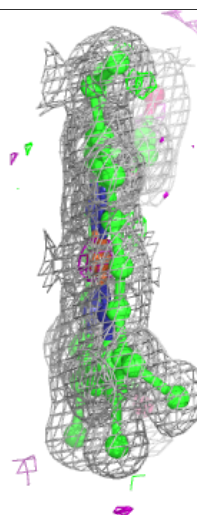
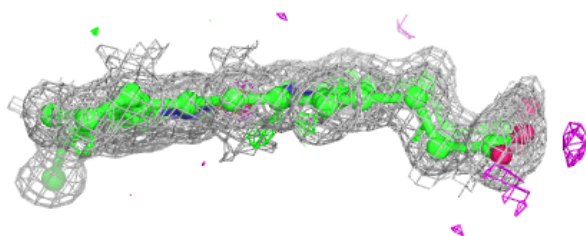
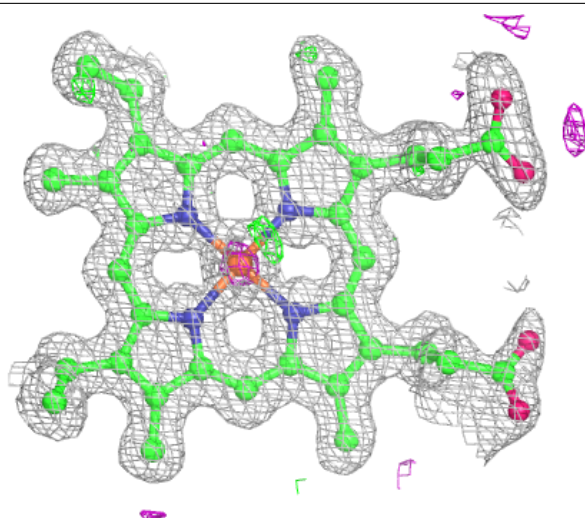
**Electron density around HEC B 111:**

$2mF_o-DF_c$  (at 0.7 rmsd) in gray  
 $mF_o-DF_c$  (at 3 rmsd) in purple (negative)  
and green (positive)



**Electron density around HEC A 113 (B):**

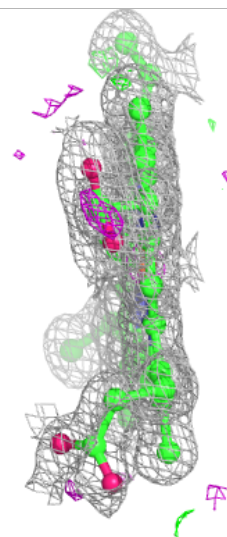
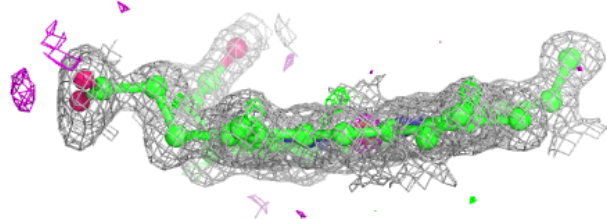
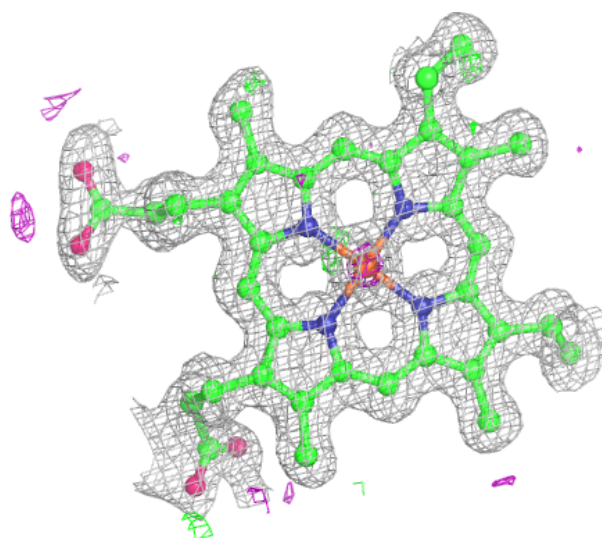
$2mF_o-DF_c$  (at 0.7 rmsd) in gray  
 $mF_o-DF_c$  (at 3 rmsd) in purple (negative)  
and green (positive)





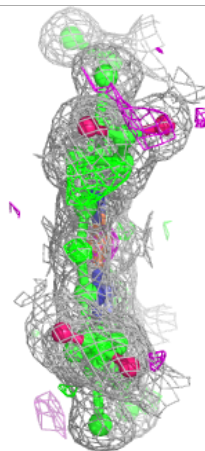
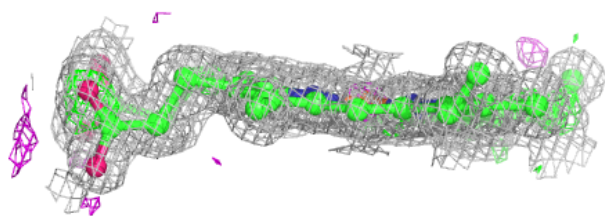
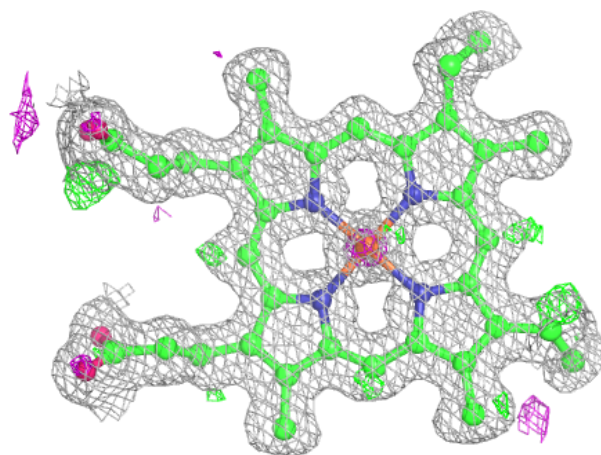
**Electron density around HEC A 113 (A):**

$2mF_o-DF_c$  (at 0.7 rmsd) in gray  
 $mF_o-DF_c$  (at 3 rmsd) in purple (negative)  
and green (positive)

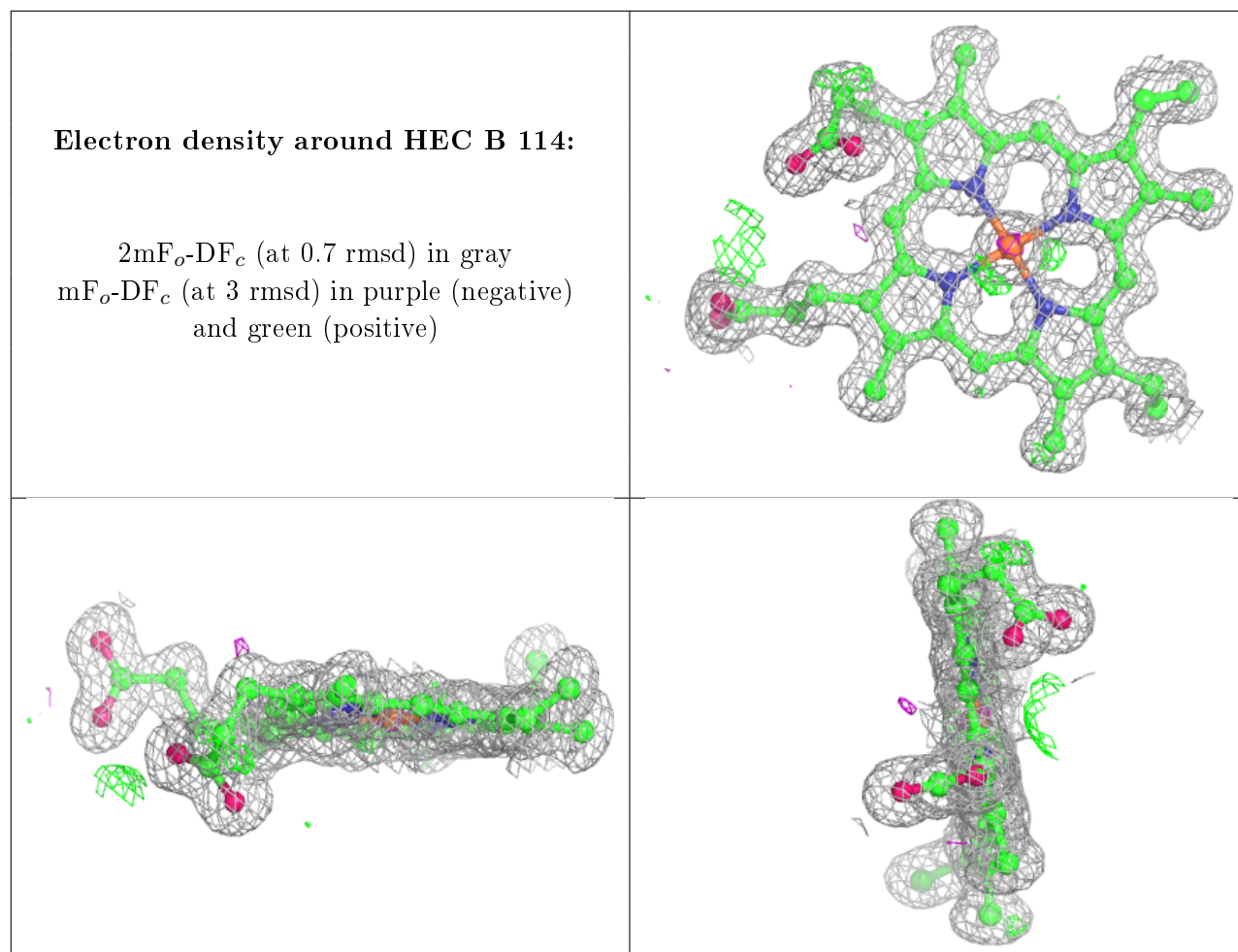


**Electron density around HEC A 111:**

$2mF_o-DF_c$  (at 0.7 rmsd) in gray  
 $mF_o-DF_c$  (at 3 rmsd) in purple (negative)  
and green (positive)







## 6.5 Other polymers [i](#)

There are no such residues in this entry.