



Full wwPDB X-ray Structure Validation Report ⓘ

May 15, 2020 – 05:09 pm BST

PDB ID : 5GYR
Title : Tetrameric Allochromatium vinosum cytochrome c'
Authors : Yamanaka, M.; Hoshizumi, M.; Nagao, S.; Nakayama, R.; Shibata, N.; Higuchi, Y.; Hirota, S.
Deposited on : 2016-09-23
Resolution : 1.60 Å(reported)

This is a Full wwPDB X-ray Structure Validation Report for a publicly released PDB entry.

We welcome your comments at validation@mail.wwpdb.org

A user guide is available at

<https://www.wwpdb.org/validation/2017/XrayValidationReportHelp>

with specific help available everywhere you see the ⓘ symbol.

The following versions of software and data (see [references ⓘ](#)) were used in the production of this report:

MolProbity : 4.02b-467
Mogul : 1.8.5 (274361), CSD as541be (2020)
Xtriage (Phenix) : 1.13
EDS : 2.11
buster-report : 1.1.7 (2018)
Percentile statistics : 20191225.v01 (using entries in the PDB archive December 25th 2019)
Refmac : 5.8.0158
CCP4 : 7.0.044 (Gargrove)
Ideal geometry (proteins) : Engh & Huber (2001)
Ideal geometry (DNA, RNA) : Parkinson et al. (1996)
Validation Pipeline (wwPDB-VP) : 2.11

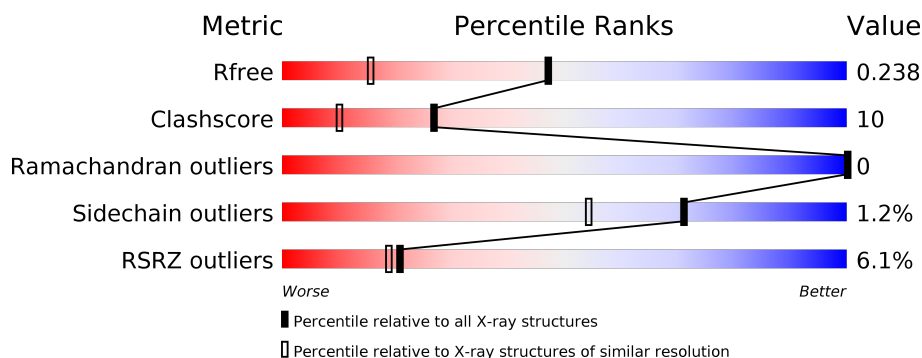
1 Overall quality at a glance

The following experimental techniques were used to determine the structure:

X-RAY DIFFRACTION

The reported resolution of this entry is 1.60 Å.

Percentile scores (ranging between 0-100) for global validation metrics of the entry are shown in the following graphic. The table shows the number of entries on which the scores are based.




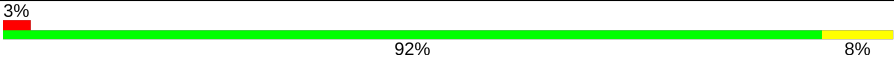
Metric	Whole archive (#Entries)	Similar resolution (#Entries, resolution range(Å))
R_{free}	130704	3398 (1.60-1.60)
Clashscore	141614	3665 (1.60-1.60)
Ramachandran outliers	138981	3564 (1.60-1.60)
Sidechain outliers	138945	3563 (1.60-1.60)
RSRZ outliers	127900	3321 (1.60-1.60)

The table below summarises the geometric issues observed across the polymeric chains and their fit to the electron density. The red, orange, yellow and green segments on the lower bar indicate the fraction of residues that contain outliers for ≥ 3 , 2, 1 and 0 types of geometric quality criteria respectively. A grey segment represents the fraction of residues that are not modelled. The numeric value for each fraction is indicated below the corresponding segment, with a dot representing fractions $\leq 5\%$. The upper red bar (where present) indicates the fraction of residues that have poor fit to the electron density. The numeric value is given above the bar.

Mol	Chain	Length	Quality of chain
1	A	131	<div> <div>5%</div> <div> <div></div> <div>90%</div> <div>10%</div> </div> </div>
1	B	131	<div> <div>2%</div> <div> <div></div> <div>94%</div> <div>6%</div> </div> </div>
1	E	131	<div> <div>4%</div> <div> <div></div> <div>86%</div> <div>14%</div> </div> </div>
1	F	131	<div> <div>3%</div> <div> <div></div> <div>95%</div> <div>5%</div> </div> </div>
1	I	131	<div> <div>11%</div> <div> <div></div> <div>91%</div> <div>8%</div> </div> </div>
1	J	131	<div> <div>4%</div> <div> <div></div> <div>92%</div> <div>8%</div> </div> </div>

Continued on next page...

Continued from previous page...

Mol	Chain	Length	Quality of chain
1	M	131	
1	N	131	

2 Entry composition

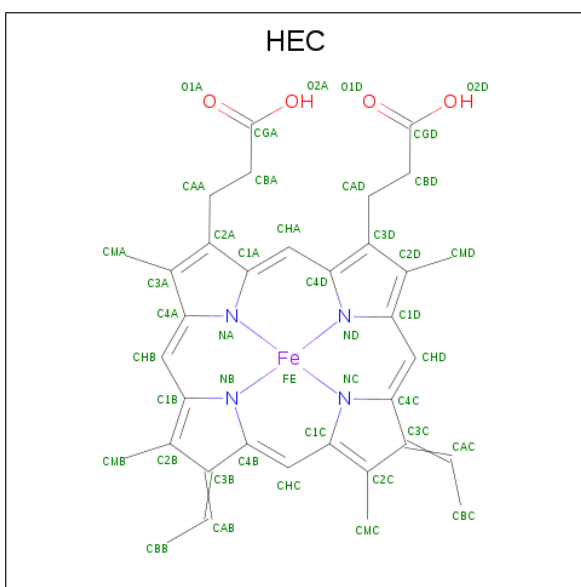
There are 3 unique types of molecules in this entry. The entry contains 8888 atoms, of which 0 are hydrogens and 0 are deuteriums.

In the tables below, the ZeroOcc column contains the number of atoms modelled with zero occupancy, the AltConf column contains the number of residues with at least one atom in alternate conformation and the Trace column contains the number of residues modelled with at most 2 atoms.

- Molecule 1 is a protein called Cytochrome c'.

Mol	Chain	Residues	Atoms					ZeroOcc	AltConf	Trace
1	A	131	Total	C	N	O	S	0	0	0
			967	600	168	193	6			
1	B	131	Total	C	N	O	S	0	0	0
			967	600	168	193	6			
1	E	131	Total	C	N	O	S	0	0	0
			967	600	168	193	6			
1	F	131	Total	C	N	O	S	0	0	0
			967	600	168	193	6			
1	I	131	Total	C	N	O	S	0	0	0
			967	600	168	193	6			
1	J	131	Total	C	N	O	S	0	0	0
			967	600	168	193	6			
1	M	131	Total	C	N	O	S	0	0	0
			967	600	168	193	6			
1	N	131	Total	C	N	O	S	0	0	0
			967	600	168	193	6			

- Molecule 2 is HEME C (three-letter code: HEC) (formula: C₃₄H₃₄FeN₄O₄).



Mol	Chain	Residues	Atoms					ZeroOcc	AltConf
2	A	1	Total 43	C 34	Fe 1	N 4	O 4	0	0
2	B	1	Total 43	C 34	Fe 1	N 4	O 4	0	0
2	E	1	Total 43	C 34	Fe 1	N 4	O 4	0	0
2	F	1	Total 43	C 34	Fe 1	N 4	O 4	0	0
2	I	1	Total 43	C 34	Fe 1	N 4	O 4	0	0
2	J	1	Total 43	C 34	Fe 1	N 4	O 4	0	0
2	M	1	Total 43	C 34	Fe 1	N 4	O 4	0	0
2	N	1	Total 43	C 34	Fe 1	N 4	O 4	0	0

- Molecule 3 is water.

Mol	Chain	Residues	Atoms	ZeroOcc	AltConf
3	A	113	Total O 113 113	0	0
3	B	138	Total O 138 138	0	0
3	E	125	Total O 125 125	0	0
3	F	140	Total O 140 140	0	0

Continued on next page...

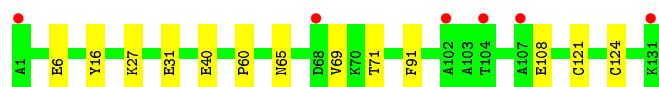
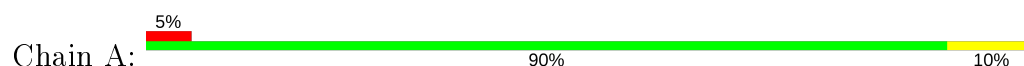
Continued from previous page...

Mol	Chain	Residues	Atoms		ZeroOcc	AltConf
3	I	52	Total 52	O 52	0	0
3	J	97	Total 97	O 97	0	0
3	M	48	Total 48	O 48	0	0
3	N	95	Total 95	O 95	0	0

3 Residue-property plots [i](#)

These plots are drawn for all protein, RNA and DNA chains in the entry. The first graphic for a chain summarises the proportions of the various outlier classes displayed in the second graphic. The second graphic shows the sequence view annotated by issues in geometry and electron density. Residues are color-coded according to the number of geometric quality criteria for which they contain at least one outlier: green = 0, yellow = 1, orange = 2 and red = 3 or more. A red dot above a residue indicates a poor fit to the electron density ($RSRZ > 2$). Stretches of 2 or more consecutive residues without any outlier are shown as a green connector. Residues present in the sample, but not in the model, are shown in grey.

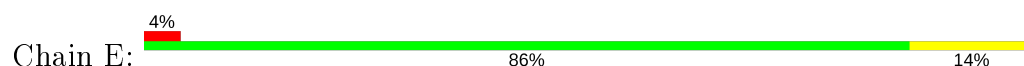
- Molecule 1: Cytochrome c'



- Molecule 1: Cytochrome c'



- Molecule 1: Cytochrome c'



- Molecule 1: Cytochrome c'



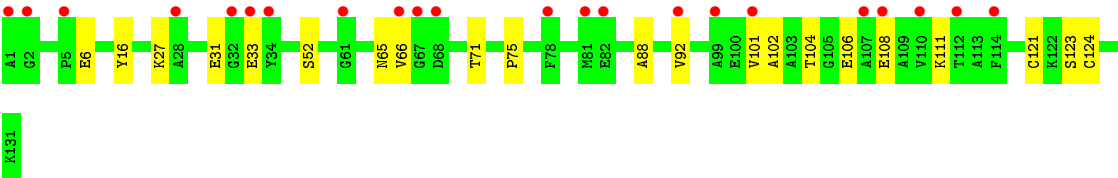
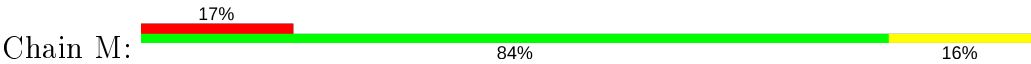
- Molecule 1: Cytochrome c'



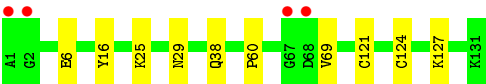
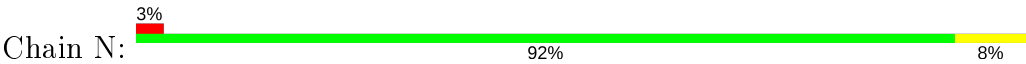
- Molecule 1: Cytochrome c'



● Molecule 1: Cytochrome c'



● Molecule 1: Cytochrome c'



4 Data and refinement statistics

Property	Value	Source
Space group	P 1 21 1	Depositor
Cell constants a, b, c, α , β , γ	82.95Å 48.62Å 130.55Å 90.00° 92.28° 90.00°	Depositor
Resolution (Å)	41.40 – 1.60 40.16 – 1.60	Depositor EDS
% Data completeness (in resolution range)	98.6 (41.40-1.60) 98.6 (40.16-1.60)	Depositor EDS
R_{merge}	0.07	Depositor
R_{sym}	(Not available)	Depositor
$\langle I/\sigma(I) \rangle$ ¹	2.94 (at 1.60Å)	Xtriage
Refinement program	REFMAC 5.8.0073	Depositor
R, R_{free}	0.204 , 0.232 0.213 , 0.238	Depositor DCC
R_{free} test set	6704 reflections (4.93%)	wwPDB-VP
Wilson B-factor (Å ²)	16.7	Xtriage
Anisotropy	0.175	Xtriage
Bulk solvent k_{sol} (e/Å ³), B_{sol} (Å ²)	0.40 , 45.9	EDS
L-test for twinning ²	$\langle L \rangle = 0.50$, $\langle L^2 \rangle = 0.33$	Xtriage
Estimated twinning fraction	0.024 for h,-k,-l	Xtriage
F_o, F_c correlation	0.96	EDS
Total number of atoms	8888	wwPDB-VP
Average B, all atoms (Å ²)	27.0	wwPDB-VP

Xtriage's analysis on translational NCS is as follows: *The analyses of the Patterson function reveals a significant off-origin peak that is 91.11 % of the origin peak, indicating pseudo-translational symmetry. The chance of finding a peak of this or larger height randomly in a structure without pseudo-translational symmetry is equal to 1.7269e-08. The detected translational NCS is most likely also responsible for the elevated intensity ratio.*

¹Intensities estimated from amplitudes.

²Theoretical values of $\langle |L| \rangle$, $\langle L^2 \rangle$ for acentric reflections are 0.5, 0.333 respectively for untwinned datasets, and 0.375, 0.2 for perfectly twinned datasets.

5 Model quality

5.1 Standard geometry

Bond lengths and bond angles in the following residue types are not validated in this section: HEC

The Z score for a bond length (or angle) is the number of standard deviations the observed value is removed from the expected value. A bond length (or angle) with $|Z| > 5$ is considered an outlier worth inspection. RMSZ is the root-mean-square of all Z scores of the bond lengths (or angles).

Mol	Chain	Bond lengths		Bond angles	
		RMSZ	$\# Z > 5$	RMSZ	$\# Z > 5$
1	A	0.45	0/981	0.57	0/1319
1	B	0.50	0/981	0.64	0/1319
1	E	0.50	1/981 (0.1%)	0.57	0/1319
1	F	0.48	0/981	0.62	0/1319
1	I	0.47	0/981	0.65	0/1319
1	J	0.47	0/981	0.60	0/1319
1	M	0.49	0/981	0.66	0/1319
1	N	0.47	0/981	0.61	0/1319
All	All	0.48	1/7848 (0.0%)	0.62	0/10552

Chiral center outliers are detected by calculating the chiral volume of a chiral center and verifying if the center is modelled as a planar moiety or with the opposite hand. A planarity outlier is detected by checking planarity of atoms in a peptide group, atoms in a mainchain group or atoms of a sidechain that are expected to be planar.

Mol	Chain	#Chirality outliers	#Planarity outliers
1	I	0	1

All (1) bond length outliers are listed below:

Mol	Chain	Res	Type	Atoms	Z	Observed(Å)	Ideal(Å)
1	E	123	SER	CB-OG	-6.17	1.34	1.42

There are no bond angle outliers.

There are no chirality outliers.

All (1) planarity outliers are listed below:

Mol	Chain	Res	Type	Group
1	I	2	GLY	Peptide

5.2 Too-close contacts ⓘ

In the following table, the Non-H and H(model) columns list the number of non-hydrogen atoms and hydrogen atoms in the chain respectively. The H(added) column lists the number of hydrogen atoms added and optimized by MolProbity. The Clashes column lists the number of clashes within the asymmetric unit, whereas Symm-Clashes lists symmetry related clashes.

Mol	Chain	Non-H	H(model)	H(added)	Clashes	Symm-Clashes
1	A	967	0	940	17	0
1	B	967	0	940	12	0
1	E	967	0	940	21	0
1	F	967	0	940	10	1
1	I	967	0	937	15	0
1	J	967	0	940	17	0
1	M	967	0	939	22	0
1	N	967	0	940	15	0
2	A	43	0	32	13	0
2	B	43	0	32	11	0
2	E	43	0	32	12	0
2	F	43	0	32	11	0
2	I	43	0	32	11	0
2	J	43	0	32	11	0
2	M	43	0	32	12	0
2	N	43	0	32	10	0
3	A	113	0	0	0	0
3	B	138	0	0	1	0
3	E	125	0	0	0	0
3	F	140	0	0	0	0
3	I	52	0	0	0	0
3	J	97	0	0	1	1
3	M	48	0	0	1	0
3	N	95	0	0	1	0
All	All	8888	0	7772	145	1

The all-atom clashscore is defined as the number of clashes found per 1000 atoms (including hydrogen atoms). The all-atom clashscore for this structure is 10.

All (145) close contacts within the same asymmetric unit are listed below, sorted by their clash magnitude.

Atom-1	Atom-2	Interatomic distance (Å)	Clash overlap (Å)
1:N:124:CYS:SG	2:N:201:HEC:HAC	1.80	1.16
1:F:124:CYS:SG	2:F:201:HEC:HAC	1.82	1.11
1:B:124:CYS:SG	2:B:201:HEC:HAC	1.84	1.10

Continued on next page...

Continued from previous page...

Atom-1	Atom-2	Interatomic distance (Å)	Clash overlap (Å)
1:M:124:CYS:SG	2:M:201:HEC:HAC	1.85	1.08
1:I:124:CYS:SG	2:I:201:HEC:HAC	1.93	1.07
1:J:124:CYS:SG	2:J:201:HEC:HAC	1.84	1.07
1:E:124:CYS:SG	2:E:201:HEC:HAC	1.87	1.07
1:A:124:CYS:SG	2:A:201:HEC:HAC	1.90	1.04
1:N:121:CYS:SG	2:N:201:HEC:HAB	1.94	1.02
1:J:121:CYS:SG	2:J:201:HEC:HAB	2.00	1.01
1:I:31:GLU:HB3	1:M:31:GLU:HG2	1.46	0.96
1:E:121:CYS:SG	2:E:201:HEC:HAB	2.07	0.92
1:I:121:CYS:SG	2:I:201:HEC:HAB	2.06	0.92
1:M:121:CYS:SG	2:M:201:HEC:HAB	2.09	0.92
1:F:121:CYS:SG	2:F:201:HEC:HAB	2.09	0.91
1:E:72:ARG:HG2	1:J:131:LYS:HE3	1.54	0.90
1:B:121:CYS:SG	2:B:201:HEC:HAB	2.10	0.90
1:A:121:CYS:SG	2:A:201:HEC:HAB	2.12	0.89
1:B:121:CYS:SG	2:B:201:HEC:CBB	2.61	0.88
1:M:121:CYS:SG	2:M:201:HEC:CBB	2.60	0.88
1:E:121:CYS:SG	2:E:201:HEC:CBB	2.61	0.87
1:J:121:CYS:SG	2:J:201:HEC:CBB	2.64	0.85
1:F:121:CYS:SG	2:F:201:HEC:CBB	2.65	0.84
1:N:121:CYS:SG	2:N:201:HEC:CBB	2.67	0.82
1:A:6:GLU:HG3	1:A:69:VAL:HG21	1.62	0.81
1:J:6:GLU:HG3	1:J:69:VAL:HG21	1.63	0.81
1:A:121:CYS:SG	2:A:201:HEC:CBB	2.70	0.80
1:B:124:CYS:SG	2:B:201:HEC:CBC	2.69	0.80
1:F:6:GLU:HG3	1:F:69:VAL:HG21	1.63	0.80
1:E:6:GLU:HG3	1:E:69:VAL:HG21	1.64	0.80
1:B:6:GLU:HG3	1:B:69:VAL:HG21	1.63	0.79
1:N:6:GLU:HG3	1:N:69:VAL:HG21	1.63	0.78
1:I:31:GLU:CB	1:M:31:GLU:HG2	2.14	0.78
1:M:104:THR:OG1	1:M:106:GLU:HG3	1.83	0.78
1:I:121:CYS:SG	2:I:201:HEC:CBB	2.73	0.77
1:J:124:CYS:SG	2:J:201:HEC:CBC	2.73	0.77
1:E:27:LYS:HE2	1:E:31:GLU:OE2	1.86	0.76
1:M:124:CYS:SG	2:M:201:HEC:CBC	2.75	0.75
1:E:124:CYS:SG	2:E:201:HEC:CBC	2.75	0.75
1:F:124:CYS:SG	2:F:201:HEC:CBC	2.75	0.75
1:M:33:GLU:OE1	1:N:127:LYS:NZ	2.21	0.74
1:J:131:LYS:HG2	1:N:6:GLU:OE2	1.88	0.74
1:I:124:CYS:SG	2:I:201:HEC:CBC	2.74	0.74
1:M:121:CYS:SG	2:M:201:HEC:C3B	2.77	0.72

Continued on next page...

Continued from previous page...

Atom-1	Atom-2	Interatomic distance (Å)	Clash overlap (Å)
1:N:121:CYS:SG	2:N:201:HEC:C3B	2.78	0.72
1:M:124:CYS:SG	2:M:201:HEC:C3C	2.77	0.71
1:B:108:GLU:HG2	3:B:396:HOH:O	1.89	0.71
1:N:124:CYS:SG	2:N:201:HEC:C3C	2.79	0.71
1:E:72:ARG:HG2	1:J:131:LYS:CE	2.21	0.70
1:E:124:CYS:SG	2:E:201:HEC:C3C	2.79	0.68
1:J:124:CYS:SG	2:J:201:HEC:C3C	2.80	0.68
1:F:124:CYS:SG	2:F:201:HEC:C3C	2.82	0.68
1:N:124:CYS:SG	2:N:201:HEC:CBC	2.79	0.68
2:A:201:HEC:HMC1	2:A:201:HEC:CBC	2.24	0.68
1:M:27:LYS:HG2	1:M:31:GLU:OE2	1.94	0.68
1:I:124:CYS:SG	2:I:201:HEC:C3C	2.83	0.67
1:B:124:CYS:SG	2:B:201:HEC:C3C	2.81	0.67
1:J:121:CYS:SG	2:J:201:HEC:C3B	2.81	0.67
1:E:121:CYS:SG	2:E:201:HEC:C3B	2.82	0.66
1:A:124:CYS:SG	2:A:201:HEC:CBC	2.83	0.66
1:E:6:GLU:CG	1:E:69:VAL:HG21	2.26	0.65
1:F:6:GLU:CG	1:F:69:VAL:HG21	2.27	0.65
1:N:6:GLU:CG	1:N:69:VAL:HG21	2.26	0.65
1:J:6:GLU:CG	1:J:69:VAL:HG21	2.26	0.65
1:A:6:GLU:CG	1:A:69:VAL:HG21	2.26	0.64
1:F:121:CYS:SG	2:F:201:HEC:C3B	2.86	0.64
1:B:6:GLU:CG	1:B:69:VAL:HG21	2.26	0.64
1:A:121:CYS:SG	2:A:201:HEC:C3B	2.86	0.64
1:I:26:ILE:O	1:I:30:LEU:HD13	1.98	0.64
1:A:124:CYS:SG	2:A:201:HEC:C3C	2.86	0.63
1:B:121:CYS:SG	2:B:201:HEC:C3B	2.85	0.63
1:F:6:GLU:HG3	1:F:69:VAL:CG2	2.30	0.61
1:E:6:GLU:HG3	1:E:69:VAL:CG2	2.31	0.60
1:A:6:GLU:HG3	1:A:69:VAL:CG2	2.30	0.60
2:E:201:HEC:CBC	2:E:201:HEC:HMC1	2.32	0.60
1:J:6:GLU:HG3	1:J:69:VAL:CG2	2.32	0.60
2:N:201:HEC:HMB1	2:N:201:HEC:HBB3	1.83	0.59
1:A:27:LYS:HE3	1:A:31:GLU:OE2	2.01	0.59
1:B:6:GLU:HG3	1:B:69:VAL:CG2	2.32	0.59
1:E:27:LYS:CE	1:E:31:GLU:OE2	2.49	0.59
1:N:6:GLU:HG3	1:N:69:VAL:CG2	2.32	0.59
2:E:201:HEC:HBB3	2:E:201:HEC:HMB1	1.84	0.58
2:A:201:HEC:HBB3	2:A:201:HEC:HMB1	1.85	0.58
2:I:201:HEC:HMB1	2:I:201:HEC:HBB3	1.83	0.58
2:F:201:HEC:HBB3	2:F:201:HEC:HMB1	1.86	0.57

Continued on next page...

Continued from previous page...

Atom-1	Atom-2	Interatomic distance (Å)	Clash overlap (Å)
1:I:121:CYS:SG	2:I:201:HEC:C3B	2.92	0.57
2:A:201:HEC:HMC1	2:A:201:HEC:HBC3	1.87	0.57
1:A:40:GLU:HG3	3:N:332:HOH:O	2.05	0.56
1:B:121:CYS:SG	2:B:201:HEC:HBB3	2.45	0.56
2:M:201:HEC:HMB1	2:M:201:HEC:HBB3	1.86	0.56
2:M:201:HEC:HMC1	2:M:201:HEC:CBC	2.36	0.55
1:E:121:CYS:SG	2:E:201:HEC:HBB3	2.47	0.55
2:J:201:HEC:CBC	2:J:201:HEC:HMC1	2.36	0.55
1:M:121:CYS:SG	2:M:201:HEC:HBB3	2.43	0.55
2:F:201:HEC:HMC1	2:F:201:HEC:CBC	2.38	0.54
2:B:201:HEC:CBC	2:B:201:HEC:HMC1	2.37	0.53
1:M:101:VAL:HG23	1:M:102:ALA:N	2.24	0.53
1:I:31:GLU:HG3	1:M:31:GLU:HA	1.91	0.53
2:J:201:HEC:HBC3	2:J:201:HEC:HMC1	1.91	0.53
2:B:201:HEC:HMB1	2:B:201:HEC:HBB3	1.92	0.51
1:M:88:ALA:O	1:M:92:VAL:HG13	2.11	0.51
1:I:16:TYR:HB3	2:I:201:HEC:C4A	2.41	0.50
2:J:201:HEC:HBB3	2:J:201:HEC:HMB1	1.92	0.50
2:N:201:HEC:HBC3	2:N:201:HEC:HMC1	1.92	0.50
2:N:201:HEC:HMC1	2:N:201:HEC:CBC	2.42	0.50
2:F:201:HEC:HBC3	2:F:201:HEC:HMC1	1.93	0.50
2:I:201:HEC:CBC	2:I:201:HEC:HMC1	2.40	0.50
1:I:31:GLU:HB3	1:M:31:GLU:CG	2.30	0.50
1:A:108:GLU:OE1	1:A:108:GLU:HA	2.12	0.50
2:M:201:HEC:HBC3	2:M:201:HEC:HMC1	1.94	0.49
1:I:52:SER:O	1:J:25:LYS:NZ	2.46	0.49
2:E:201:HEC:HMC1	2:E:201:HEC:HBC3	1.93	0.48
1:M:6:GLU:OE1	1:M:66:VAL:HG12	2.13	0.48
1:E:108:GLU:HA	1:E:108:GLU:OE1	2.14	0.48
1:F:121:CYS:SG	2:F:201:HEC:HBB3	2.50	0.48
2:B:201:HEC:HBC3	2:B:201:HEC:HMC1	1.96	0.47
2:I:201:HEC:HBC3	2:I:201:HEC:HMC1	1.97	0.47
1:I:122:LYS:O	1:I:126:GLU:HG3	2.15	0.46
1:M:52:SER:O	1:N:25:LYS:NZ	2.49	0.46
1:A:121:CYS:SG	2:A:201:HEC:HBB3	2.55	0.46
1:E:16:TYR:HB3	2:J:201:HEC:C4A	2.46	0.45
1:J:121:CYS:SG	2:J:201:HEC:HBB3	2.54	0.45
2:M:201:HEC:HMB1	2:M:201:HEC:CBB	2.47	0.44
1:M:16:TYR:HB3	2:M:201:HEC:C4A	2.47	0.44
1:E:65:ASN:ND2	1:E:71:THR:H	2.15	0.44
2:I:201:HEC:HMB1	2:I:201:HEC:CBB	2.48	0.44

Continued on next page...

Continued from previous page...

Atom-1	Atom-2	Interatomic distance (Å)	Clash overlap (Å)
1:E:40:GLU:HG3	3:J:307:HOH:O	2.16	0.43
1:E:128:TYR:HA	1:J:74:LYS:HD3	2.01	0.43
1:A:16:TYR:HB3	2:N:201:HEC:C4A	2.48	0.43
1:A:65:ASN:ND2	1:A:71:THR:H	2.17	0.43
1:A:91:PHE:CD2	2:A:201:HEC:HMC2	2.53	0.43
2:A:201:HEC:C4A	1:N:16:TYR:HB3	2.49	0.42
1:I:65:ASN:ND2	1:I:71:THR:H	2.17	0.42
2:A:201:HEC:HMC1	2:A:201:HEC:HBC2	2.01	0.42
1:A:60:PRO:HA	1:N:60:PRO:HA	2.02	0.42
2:E:201:HEC:C4A	1:J:16:TYR:HB3	2.50	0.42
1:J:29:ASN:HD21	1:J:38:GLN:NE2	2.18	0.42
1:B:16:TYR:HB3	2:B:201:HEC:C4A	2.50	0.41
1:E:91:PHE:CD2	2:E:201:HEC:HMC2	2.56	0.41
2:F:201:HEC:CBB	2:F:201:HEC:HMB1	2.50	0.41
1:M:65:ASN:ND2	1:M:71:THR:H	2.19	0.41
1:E:84:VAL:O	1:E:89:ARG:NH1	2.55	0.40
1:M:108:GLU:HA	1:M:108:GLU:OE1	2.22	0.40
1:M:75:PRO:HB3	3:M:321:HOH:O	2.22	0.40
1:N:29:ASN:HD21	1:N:38:GLN:NE2	2.19	0.40

All (1) symmetry-related close contacts are listed below. The label for Atom-2 includes the symmetry operator and encoded unit-cell translations to be applied.

Atom-1	Atom-2	Interatomic distance (Å)	Clash overlap (Å)
1:F:108:GLU:OE1	3:J:334:HOH:O[2_645]	2.13	0.07

5.3 Torsion angles [i](#)

5.3.1 Protein backbone [i](#)

In the following table, the Percentiles column shows the percent Ramachandran outliers of the chain as a percentile score with respect to all X-ray entries followed by that with respect to entries of similar resolution.

The Analysed column shows the number of residues for which the backbone conformation was analysed, and the total number of residues.

Mol	Chain	Analysed	Favoured	Allowed	Outliers	Percentiles
1	A	129/131 (98%)	128 (99%)	1 (1%)	0	100 100

Continued on next page...

Continued from previous page...

Mol	Chain	Analysed	Favoured	Allowed	Outliers	Percentiles	
1	B	129/131 (98%)	128 (99%)	1 (1%)	0	100	100
1	E	129/131 (98%)	128 (99%)	1 (1%)	0	100	100
1	F	129/131 (98%)	128 (99%)	1 (1%)	0	100	100
1	I	129/131 (98%)	126 (98%)	3 (2%)	0	100	100
1	J	129/131 (98%)	128 (99%)	1 (1%)	0	100	100
1	M	129/131 (98%)	127 (98%)	2 (2%)	0	100	100
1	N	129/131 (98%)	128 (99%)	1 (1%)	0	100	100
All	All	1032/1048 (98%)	1021 (99%)	11 (1%)	0	100	100

There are no Ramachandran outliers to report.

5.3.2 Protein sidechains ⓘ

In the following table, the Percentiles column shows the percent sidechain outliers of the chain as a percentile score with respect to all X-ray entries followed by that with respect to entries of similar resolution.

The Analysed column shows the number of residues for which the sidechain conformation was analysed, and the total number of residues.

Mol	Chain	Analysed	Rotameric	Outliers	Percentiles	
1	A	92/92 (100%)	92 (100%)	0	100	100
1	B	92/92 (100%)	90 (98%)	2 (2%)	52	27
1	E	92/92 (100%)	91 (99%)	1 (1%)	73	57
1	F	92/92 (100%)	90 (98%)	2 (2%)	52	27
1	I	92/92 (100%)	91 (99%)	1 (1%)	73	57
1	J	92/92 (100%)	91 (99%)	1 (1%)	73	57
1	M	92/92 (100%)	90 (98%)	2 (2%)	52	27
1	N	92/92 (100%)	92 (100%)	0	100	100
All	All	736/736 (100%)	727 (99%)	9 (1%)	71	54

All (9) residues with a non-rotameric sidechain are listed below:

Mol	Chain	Res	Type
1	B	64	LYS
1	B	131	LYS

Continued on next page...

Continued from previous page...

Mol	Chain	Res	Type
1	E	64	LYS
1	F	60	PRO
1	F	64	LYS
1	I	30	LEU
1	J	123	SER
1	M	111	LYS
1	M	123	SER

Some sidechains can be flipped to improve hydrogen bonding and reduce clashes. All (24) such sidechains are listed below:

Mol	Chain	Res	Type
1	A	38	GLN
1	A	51	ASN
1	A	65	ASN
1	B	38	GLN
1	B	44	ASN
1	E	38	GLN
1	E	51	ASN
1	E	65	ASN
1	F	38	GLN
1	F	44	ASN
1	I	38	GLN
1	I	51	ASN
1	I	65	ASN
1	I	96	ASN
1	J	38	GLN
1	J	44	ASN
1	J	96	ASN
1	M	38	GLN
1	M	51	ASN
1	M	65	ASN
1	M	96	ASN
1	N	38	GLN
1	N	44	ASN
1	N	96	ASN

5.3.3 RNA ⓘ

There are no RNA molecules in this entry.

5.4 Non-standard residues in protein, DNA, RNA chains ⓘ

There are no non-standard protein/DNA/RNA residues in this entry.

5.5 Carbohydrates ⓘ

There are no carbohydrates in this entry.

5.6 Ligand geometry ⓘ

8 ligands are modelled in this entry.

In the following table, the Counts columns list the number of bonds (or angles) for which Mogul statistics could be retrieved, the number of bonds (or angles) that are observed in the model and the number of bonds (or angles) that are defined in the Chemical Component Dictionary. The Link column lists molecule types, if any, to which the group is linked. The Z score for a bond length (or angle) is the number of standard deviations the observed value is removed from the expected value. A bond length (or angle) with $|Z| > 2$ is considered an outlier worth inspection. RMSZ is the root-mean-square of all Z scores of the bond lengths (or angles).

Mol	Type	Chain	Res	Link	Bond lengths			Bond angles		
					Counts	RMSZ	# $ Z > 2$	Counts	RMSZ	# $ Z > 2$
2	HEC	E	201	1	26,50,50	1.43	4 (15%)	18,82,82	1.31	1 (5%)
2	HEC	B	201	1	26,50,50	1.39	4 (15%)	18,82,82	1.56	5 (27%)
2	HEC	A	201	1	26,50,50	1.51	5 (19%)	18,82,82	1.29	2 (11%)
2	HEC	M	201	1	26,50,50	1.48	4 (15%)	18,82,82	1.39	2 (11%)
2	HEC	J	201	1	26,50,50	1.37	4 (15%)	18,82,82	1.40	3 (16%)
2	HEC	I	201	1	26,50,50	1.40	4 (15%)	18,82,82	1.40	2 (11%)
2	HEC	F	201	1	26,50,50	1.43	4 (15%)	18,82,82	1.53	3 (16%)
2	HEC	N	201	1	26,50,50	1.37	4 (15%)	18,82,82	1.63	4 (22%)

In the following table, the Chirals column lists the number of chiral outliers, the number of chiral centers analysed, the number of these observed in the model and the number defined in the Chemical Component Dictionary. Similar counts are reported in the Torsion and Rings columns. '-' means no outliers of that kind were identified.

Mol	Type	Chain	Res	Link	Chirals	Torsions	Rings
2	HEC	E	201	1	-	0/6/54/54	-
2	HEC	B	201	1	-	0/6/54/54	-
2	HEC	A	201	1	-	0/6/54/54	-
2	HEC	M	201	1	-	0/6/54/54	-
2	HEC	J	201	1	-	0/6/54/54	-

Continued on next page...

Continued from previous page...

Mol	Type	Chain	Res	Link	Chirals	Torsions	Rings
2	HEC	I	201	1	-	0/6/54/54	-
2	HEC	F	201	1	-	0/6/54/54	-
2	HEC	N	201	1	-	0/6/54/54	-

All (33) bond length outliers are listed below:

Mol	Chain	Res	Type	Atoms	Z	Observed(Å)	Ideal(Å)
2	E	201	HEC	CBB-CAB	-4.21	1.33	1.49
2	A	201	HEC	CBB-CAB	-4.10	1.34	1.49
2	M	201	HEC	CBC-CAC	-4.04	1.34	1.49
2	B	201	HEC	CBC-CAC	-3.98	1.34	1.49
2	I	201	HEC	CBC-CAC	-3.92	1.34	1.49
2	I	201	HEC	CBB-CAB	-3.77	1.35	1.49
2	F	201	HEC	C3B-C2B	-3.73	1.36	1.40
2	F	201	HEC	CBC-CAC	-3.70	1.35	1.49
2	N	201	HEC	CBB-CAB	-3.68	1.35	1.49
2	F	201	HEC	CBB-CAB	-3.67	1.35	1.49
2	M	201	HEC	CBB-CAB	-3.65	1.35	1.49
2	B	201	HEC	CBB-CAB	-3.62	1.35	1.49
2	J	201	HEC	CBC-CAC	-3.54	1.36	1.49
2	E	201	HEC	CBC-CAC	-3.52	1.36	1.49
2	M	201	HEC	C3B-C4B	3.52	1.49	1.43
2	J	201	HEC	CBB-CAB	-3.44	1.36	1.49
2	A	201	HEC	CBC-CAC	-3.40	1.36	1.49
2	M	201	HEC	C3B-C2B	-3.36	1.37	1.40
2	J	201	HEC	C3B-C4B	3.34	1.49	1.43
2	N	201	HEC	CBC-CAC	-3.32	1.37	1.49
2	E	201	HEC	C3B-C4B	3.27	1.49	1.43
2	A	201	HEC	C3B-C4B	3.26	1.49	1.43
2	N	201	HEC	C3B-C2B	-3.21	1.37	1.40
2	N	201	HEC	C3B-C4B	3.02	1.48	1.43
2	I	201	HEC	C3B-C4B	2.96	1.48	1.43
2	I	201	HEC	C3B-C2B	-2.92	1.37	1.40
2	A	201	HEC	C3B-C2B	-2.90	1.37	1.40
2	J	201	HEC	C3B-C2B	-2.81	1.37	1.40
2	B	201	HEC	C3B-C2B	-2.72	1.37	1.40
2	E	201	HEC	C3B-C2B	-2.59	1.38	1.40
2	F	201	HEC	C3B-C4B	2.33	1.47	1.43
2	B	201	HEC	C3B-C4B	2.31	1.47	1.43
2	A	201	HEC	C3C-C2C	-2.11	1.38	1.40

All (22) bond angle outliers are listed below:

Mol	Chain	Res	Type	Atoms	Z	Observed(°)	Ideal(°)
2	F	201	HEC	CBD-CAD-C3D	-3.22	106.55	112.49
2	N	201	HEC	CBA-CAA-C2A	-3.12	106.72	112.48
2	N	201	HEC	CMC-C2C-C1C	-3.10	123.71	128.46
2	E	201	HEC	CBD-CAD-C3D	-2.90	107.14	112.49
2	B	201	HEC	CMB-C2B-C1B	-2.65	124.39	128.46
2	N	201	HEC	CMC-C2C-C3C	2.59	128.86	125.82
2	J	201	HEC	CMC-C2C-C1C	-2.53	124.58	128.46
2	B	201	HEC	CBD-CAD-C3D	-2.49	107.90	112.49
2	I	201	HEC	CBD-CAD-C3D	-2.44	107.98	112.49
2	F	201	HEC	CBA-CAA-C2A	-2.40	108.06	112.48
2	A	201	HEC	CBD-CAD-C3D	-2.37	108.11	112.49
2	M	201	HEC	CMC-C2C-C1C	-2.36	124.83	128.46
2	B	201	HEC	CBA-CAA-C2A	-2.34	108.16	112.48
2	N	201	HEC	CBD-CAD-C3D	-2.34	108.17	112.49
2	J	201	HEC	CBD-CAD-C3D	-2.33	108.19	112.49
2	I	201	HEC	CBA-CAA-C2A	-2.24	108.36	112.48
2	F	201	HEC	CMC-C2C-C1C	-2.13	125.19	128.46
2	J	201	HEC	CBA-CAA-C2A	-2.11	108.59	112.48
2	M	201	HEC	CMB-C2B-C1B	-2.11	125.22	128.46
2	A	201	HEC	CMB-C2B-C1B	-2.08	125.26	128.46
2	B	201	HEC	C3B-C4B-NB	-2.05	107.07	110.94
2	B	201	HEC	CMC-C2C-C1C	-2.04	125.33	128.46

There are no chirality outliers.

There are no torsion outliers.

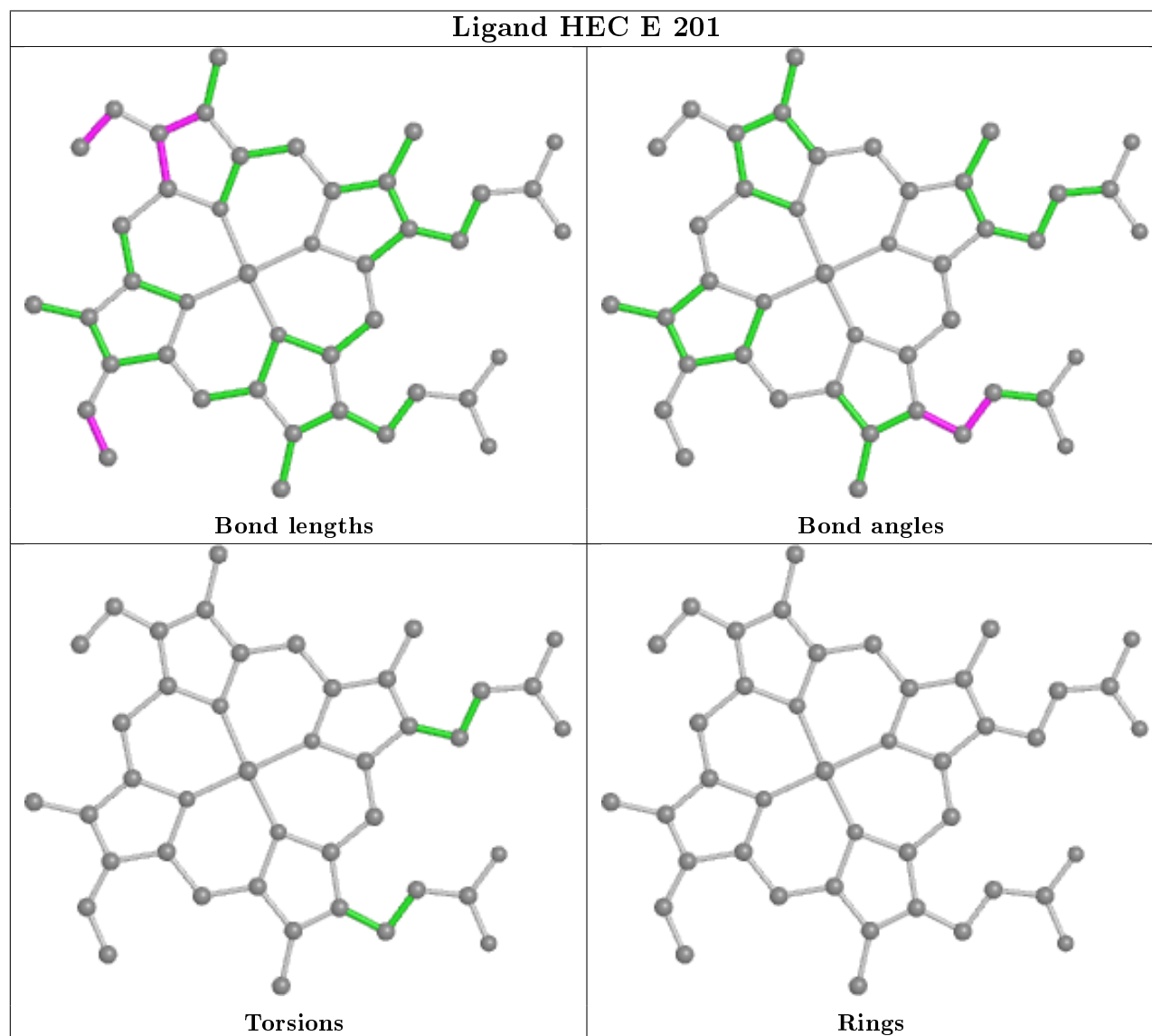
There are no ring outliers.

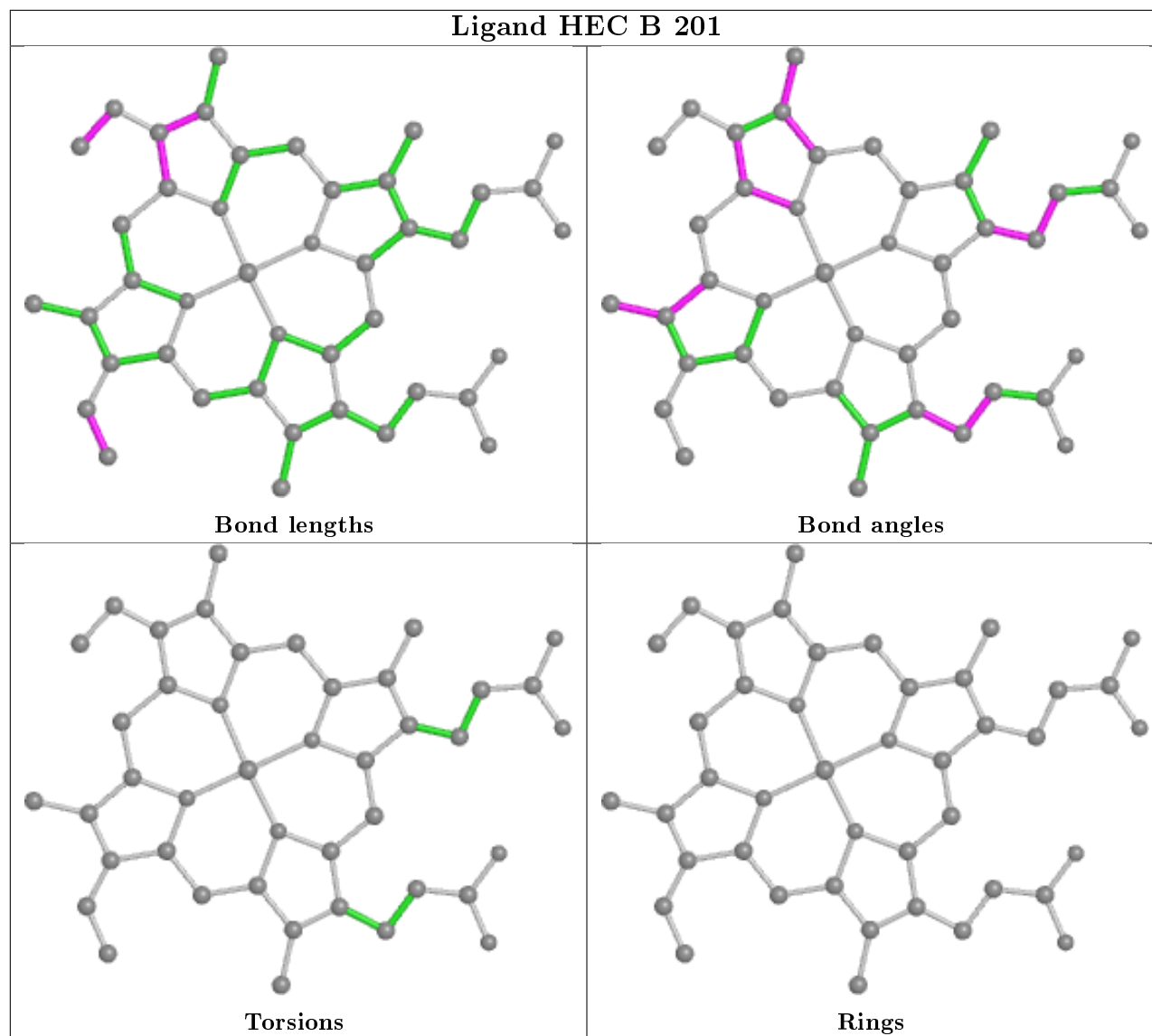
8 monomers are involved in 91 short contacts:

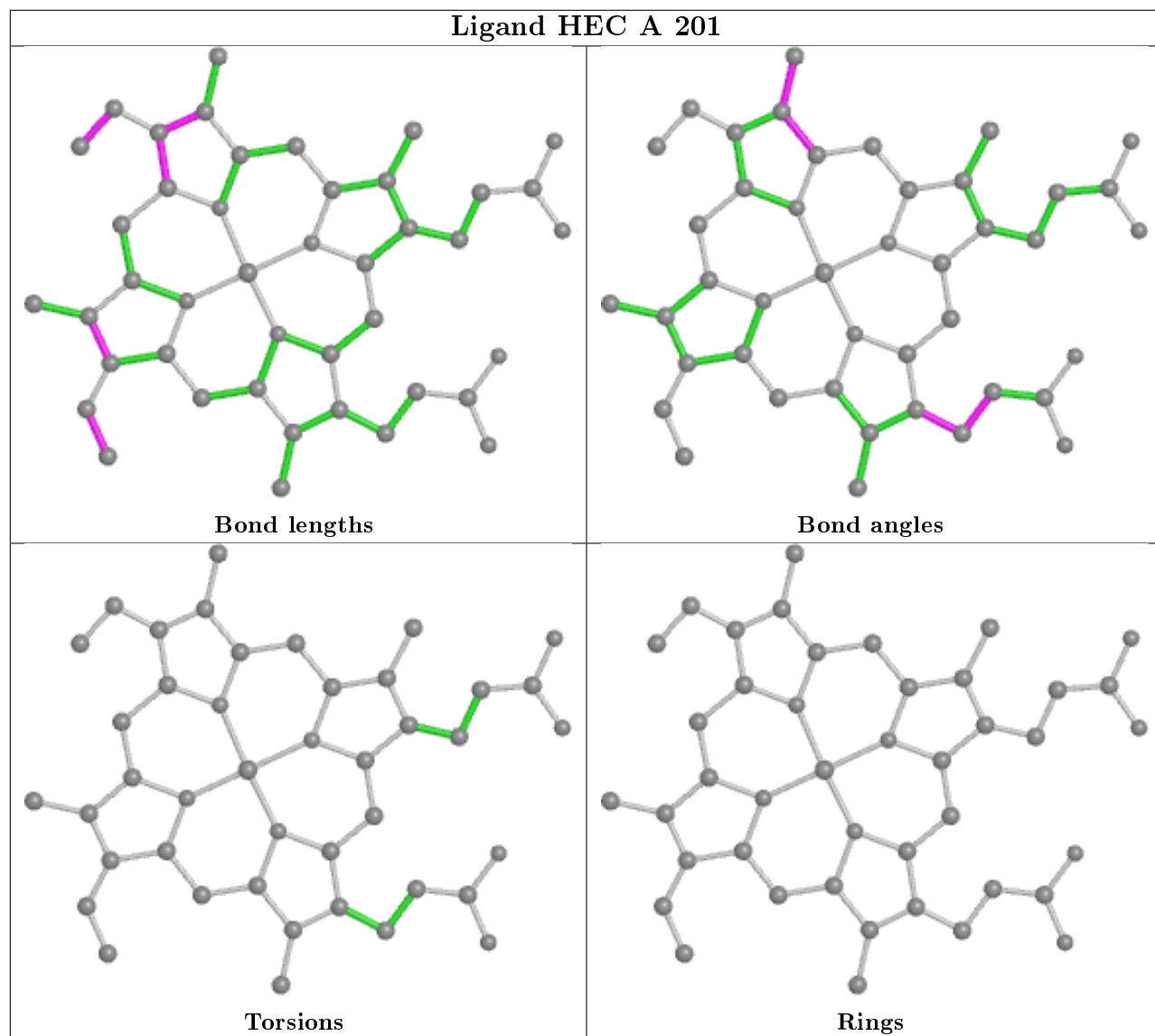
Mol	Chain	Res	Type	Clashes	Symm-Clashes
2	E	201	HEC	12	0
2	B	201	HEC	11	0
2	A	201	HEC	13	0
2	M	201	HEC	12	0
2	J	201	HEC	11	0
2	I	201	HEC	11	0
2	F	201	HEC	11	0
2	N	201	HEC	10	0

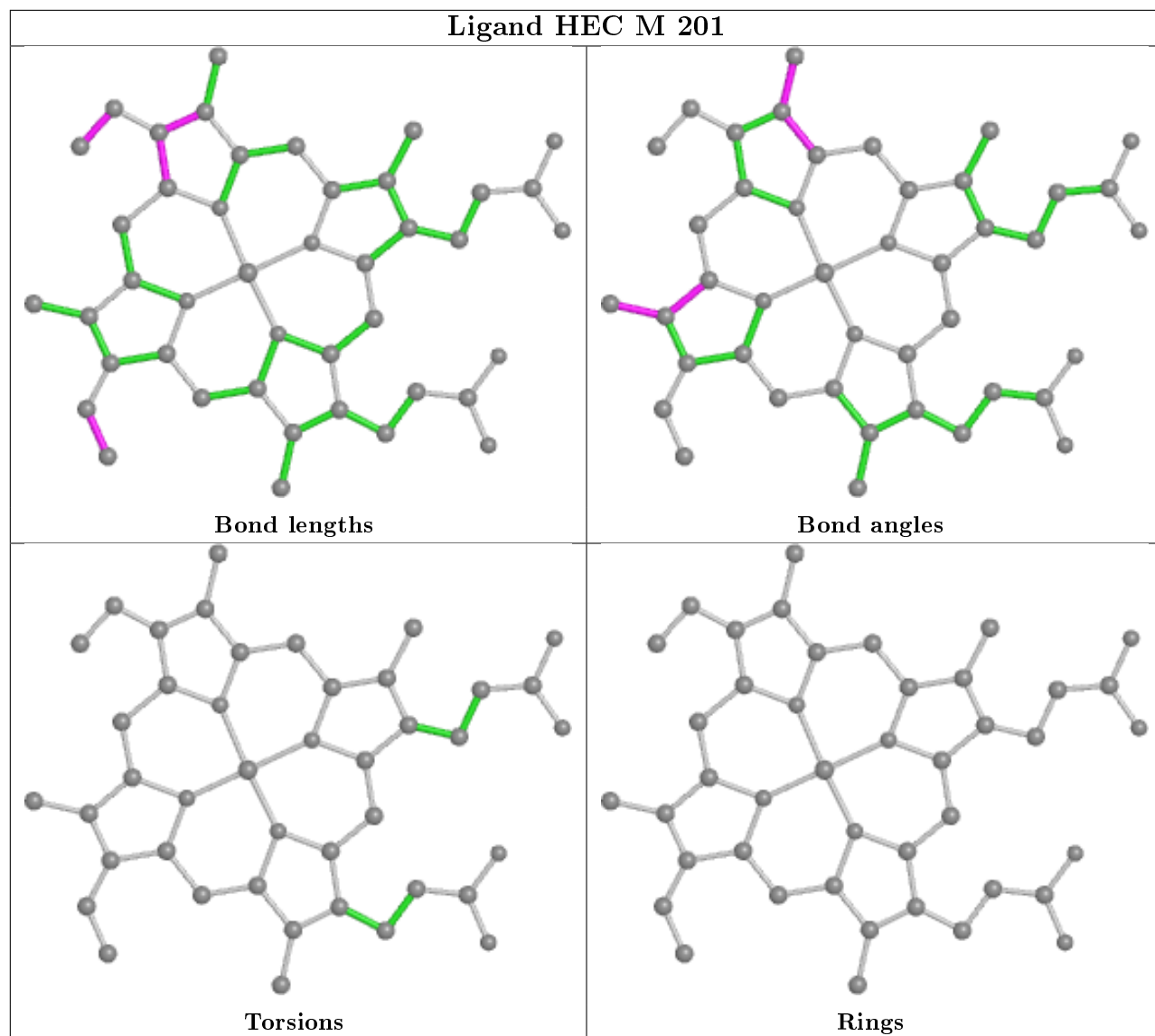
The following is a two-dimensional graphical depiction of Mogul quality analysis of bond lengths, bond angles, torsion angles, and ring geometry for all instances of the Ligand of Interest. In addition, ligands with molecular weight > 250 and outliers as shown on the validation Tables will also be included. For torsion angles, if less than 5% of the Mogul distribution of torsion angles is

within 10 degrees of the torsion angle in question, then that torsion angle is considered an outlier. Any bond that is central to one or more torsion angles identified as an outlier by Mogul will be highlighted in the graph. For rings, the root-mean-square deviation (RMSD) between the ring in question and similar rings identified by Mogul is calculated over all ring torsion angles. If the average RMSD is greater than 60 degrees and the minimal RMSD between the ring in question and any Mogul-identified rings is also greater than 60 degrees, then that ring is considered an outlier. The outliers are highlighted in purple. The color gray indicates Mogul did not find sufficient equivalents in the CSD to analyse the geometry.

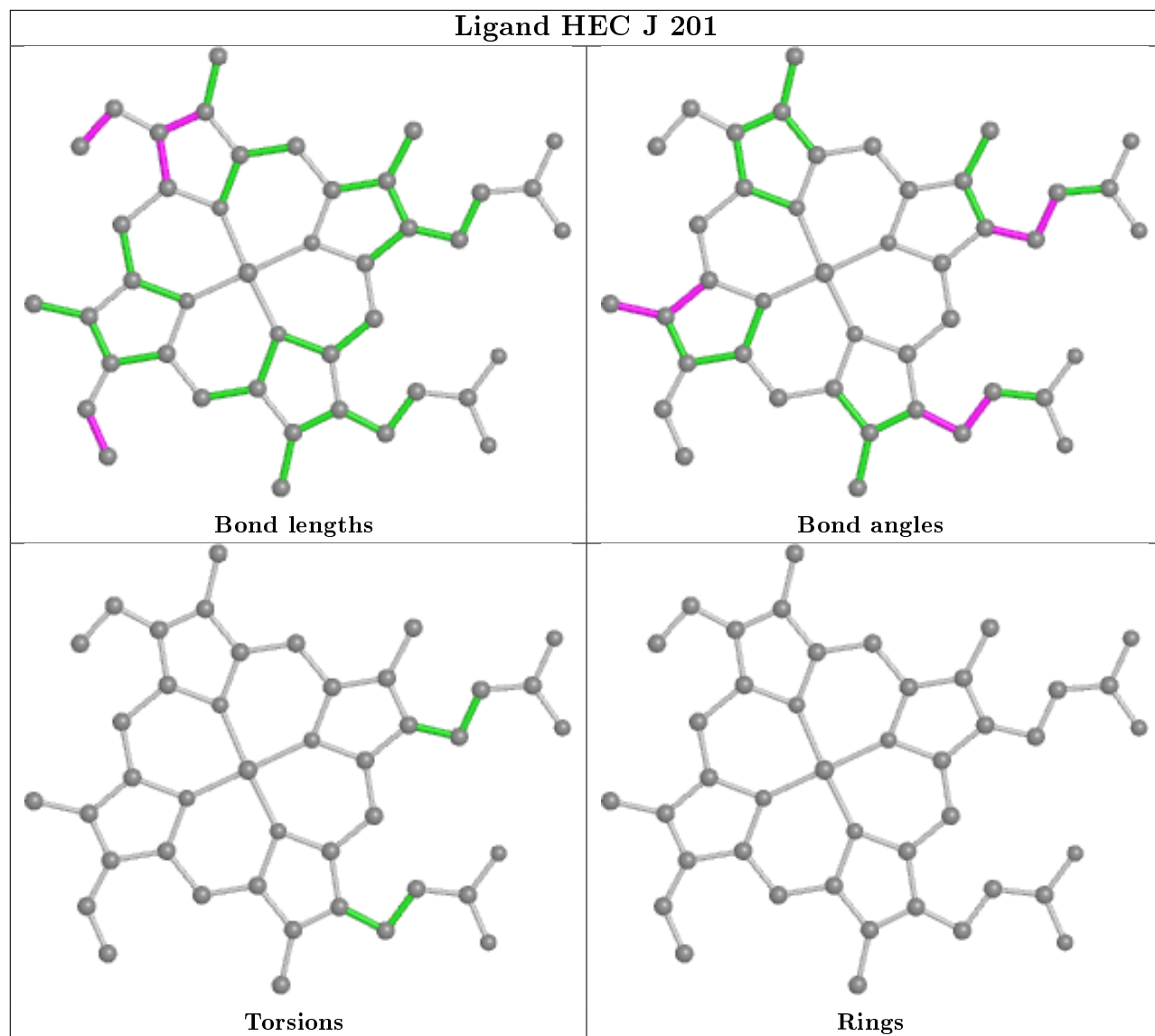




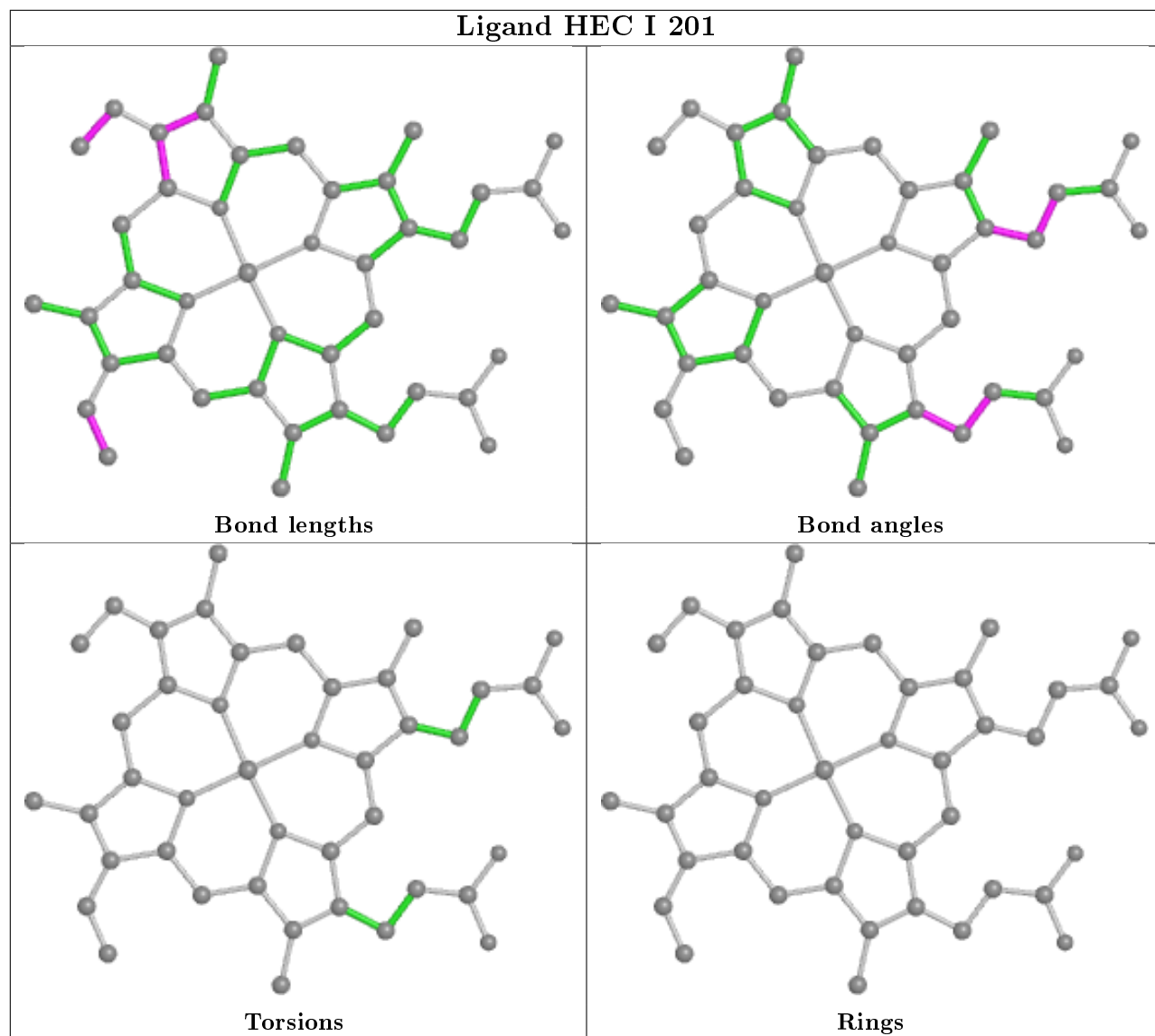




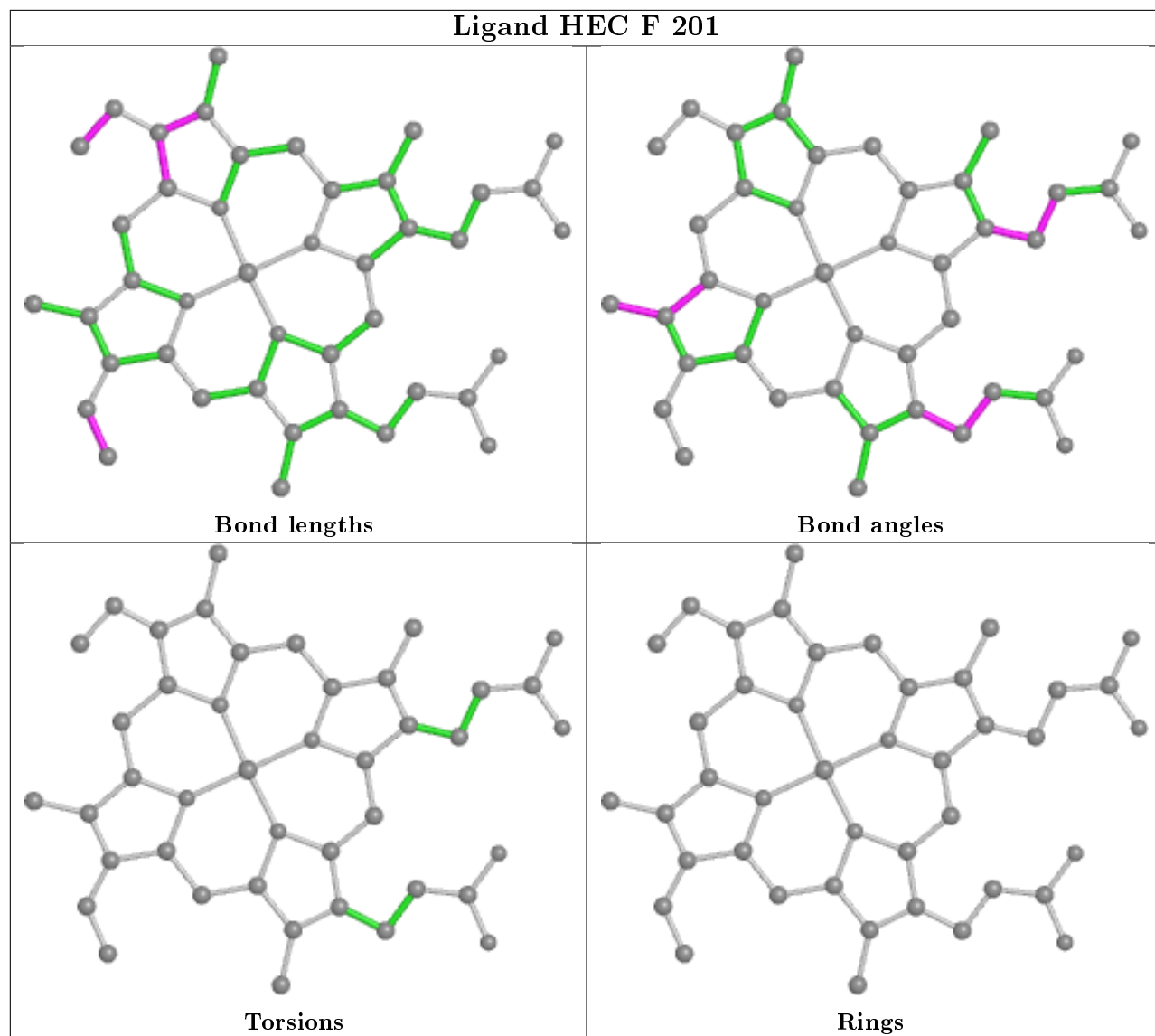
Ligand HEC J 201

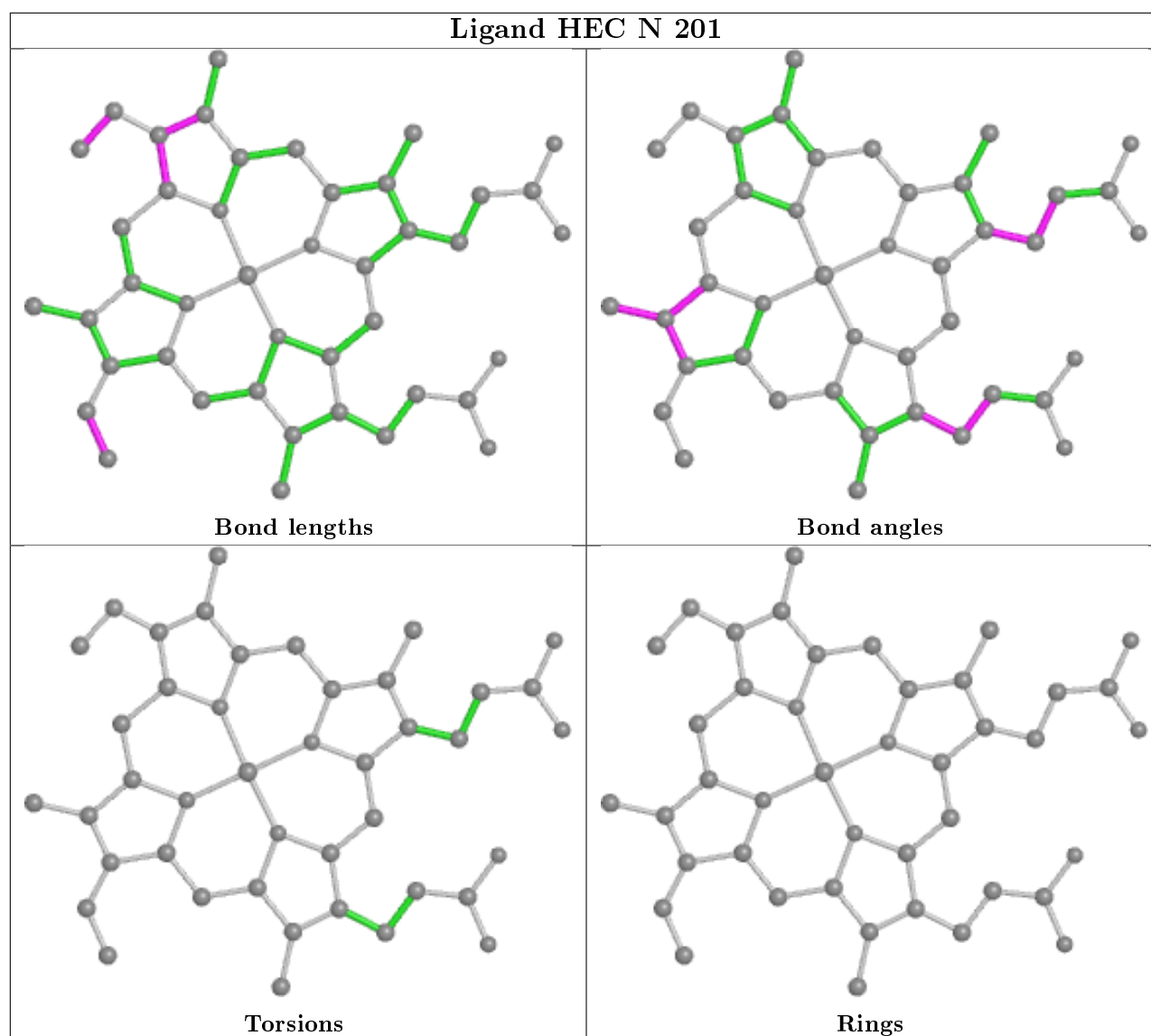


Ligand HEC I 201



Ligand HEC F 201





5.7 Other polymers [i](#)

There are no such residues in this entry.

5.8 Polymer linkage issues [i](#)

There are no chain breaks in this entry.

6 Fit of model and data ⓘ

6.1 Protein, DNA and RNA chains ⓘ

In the following table, the column labelled ‘#RSRZ> 2’ contains the number (and percentage) of RSRZ outliers, followed by percent RSRZ outliers for the chain as percentile scores relative to all X-ray entries and entries of similar resolution. The OWAB column contains the minimum, median, 95th percentile and maximum values of the occupancy-weighted average B-factor per residue. The column labelled ‘Q< 0.9’ lists the number of (and percentage) of residues with an average occupancy less than 0.9.

Mol	Chain	Analysed	<RSRZ>	#RSRZ>2	OWAB(Å ²)	Q<0.9
1	A	131/131 (100%)	0.13	6 (4%) 32 29	12, 22, 44, 70	0
1	B	131/131 (100%)	0.04	3 (2%) 60 59	11, 20, 35, 63	0
1	E	131/131 (100%)	0.07	5 (3%) 40 37	12, 22, 43, 64	0
1	F	131/131 (100%)	0.06	4 (3%) 49 46	11, 18, 35, 56	0
1	I	131/131 (100%)	0.71	15 (11%) 4 4	17, 32, 51, 63	0
1	J	131/131 (100%)	0.19	5 (3%) 40 37	14, 23, 43, 58	0
1	M	131/131 (100%)	0.94	22 (16%) 1 1	19, 35, 60, 71	0
1	N	131/131 (100%)	0.23	4 (3%) 49 46	13, 24, 43, 61	0
All	All	1048/1048 (100%)	0.30	64 (6%) 21 19	11, 24, 49, 71	0

All (64) RSRZ outliers are listed below:

Mol	Chain	Res	Type	RSRZ
1	I	1	ALA	19.4
1	N	1	ALA	11.8
1	J	1	ALA	11.2
1	M	1	ALA	10.5
1	F	1	ALA	10.0
1	B	1	ALA	9.1
1	A	1	ALA	8.8
1	E	1	ALA	7.9
1	M	107	ALA	6.6
1	B	67	GLY	6.2
1	I	2	GLY	5.1
1	I	112	THR	5.1
1	I	30	LEU	5.0
1	N	2	GLY	4.6
1	F	68	ASP	4.4
1	M	78	PHE	4.1

Continued on next page...

Continued from previous page...

Mol	Chain	Res	Type	RSRZ
1	M	112	THR	4.0
1	I	68	ASP	4.0
1	M	2	GLY	4.0
1	A	104	THR	3.9
1	J	68	ASP	3.8
1	M	68	ASP	3.8
1	B	68	ASP	3.8
1	N	67	GLY	3.7
1	M	110	VAL	3.5
1	M	67	GLY	3.5
1	A	102	ALA	3.5
1	A	131	LYS	3.5
1	I	67	GLY	3.4
1	M	82	GLU	3.4
1	M	28	ALA	3.3
1	F	67	GLY	3.1
1	J	67	GLY	3.1
1	J	2	GLY	3.1
1	M	81	MET	3.0
1	I	78	PHE	2.9
1	F	108	GLU	2.9
1	M	99	ALA	2.8
1	N	68	ASP	2.8
1	E	104	THR	2.8
1	M	33	GLU	2.8
1	E	131	LYS	2.8
1	I	109	ALA	2.6
1	E	102	ALA	2.6
1	I	60	PRO	2.5
1	M	108	GLU	2.5
1	E	68	ASP	2.5
1	M	32	GLY	2.5
1	A	68	ASP	2.5
1	I	108	GLU	2.5
1	I	113	ALA	2.4
1	M	101	VAL	2.4
1	A	107	ALA	2.4
1	I	33	GLU	2.3
1	M	92	VAL	2.3
1	M	61	GLY	2.3
1	M	34	TYR	2.3
1	I	110	VAL	2.3

Continued on next page...

Continued from previous page...

Mol	Chain	Res	Type	RSRZ
1	I	104	THR	2.2
1	M	66	VAL	2.2
1	I	116	ASP	2.2
1	M	5	PRO	2.1
1	J	34	TYR	2.1
1	M	114	PHE	2.1

6.2 Non-standard residues in protein, DNA, RNA chains [i](#)

There are no non-standard protein/DNA/RNA residues in this entry.

6.3 Carbohydrates [i](#)

There are no carbohydrates in this entry.

6.4 Ligands [i](#)

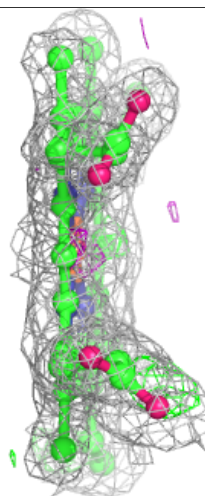
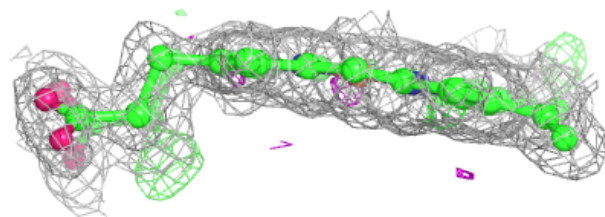
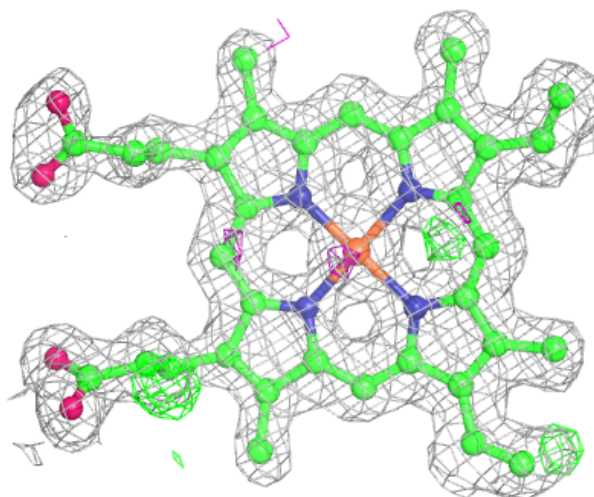
In the following table, the Atoms column lists the number of modelled atoms in the group and the number defined in the chemical component dictionary. The B-factors column lists the minimum, median, 95th percentile and maximum values of B factors of atoms in the group. The column labelled 'Q<0.9' lists the number of atoms with occupancy less than 0.9.

Mol	Type	Chain	Res	Atoms	RSCC	RSR	B-factors(\AA^2)	Q<0.9
2	HEC	A	201	43/43	0.95	0.11	12,20,29,42	0
2	HEC	E	201	43/43	0.96	0.10	16,19,27,35	0
2	HEC	M	201	43/43	0.97	0.08	18,23,30,37	0
2	HEC	I	201	43/43	0.97	0.09	18,21,26,35	0
2	HEC	J	201	43/43	0.98	0.09	13,16,18,20	0
2	HEC	B	201	43/43	0.98	0.11	10,12,18,28	0
2	HEC	F	201	43/43	0.98	0.10	11,12,20,30	0
2	HEC	N	201	43/43	0.98	0.10	10,13,16,22	0

The following is a graphical depiction of the model fit to experimental electron density of all instances of the Ligand of Interest. In addition, ligands with molecular weight > 250 and outliers as shown on the geometry validation Tables will also be included. Each fit is shown from different orientation to approximate a three-dimensional view.

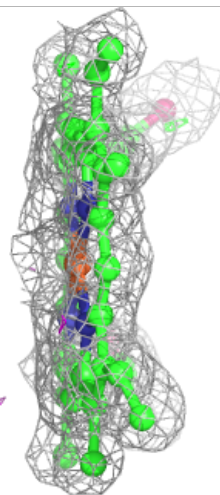
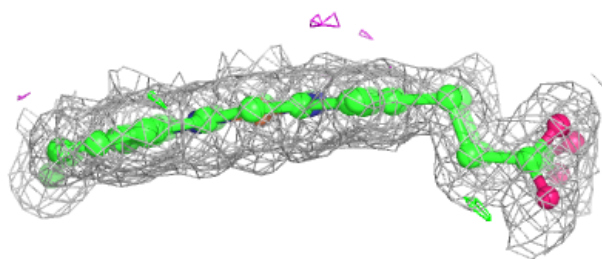
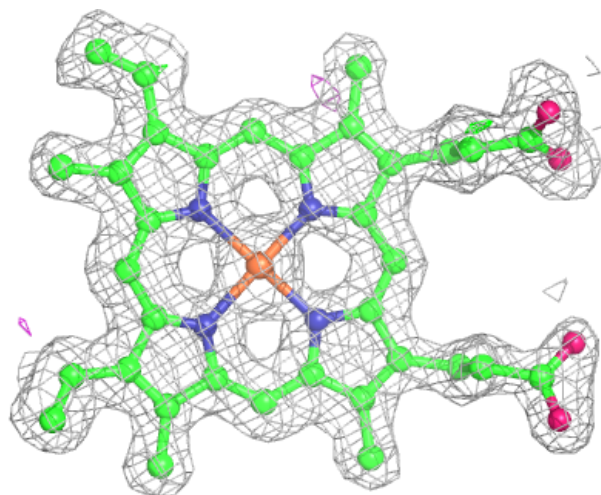
Electron density around HEC A 201:

$2mF_o-DF_c$ (at 0.7 rmsd) in gray
 mF_o-DF_c (at 3 rmsd) in purple (negative)
and green (positive)



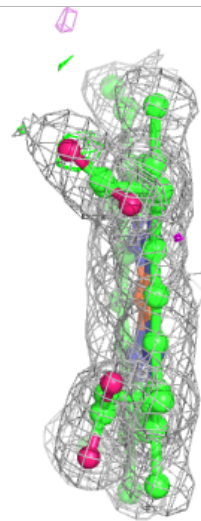
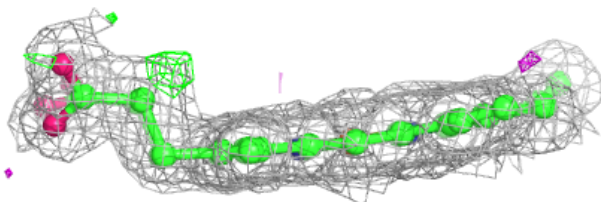
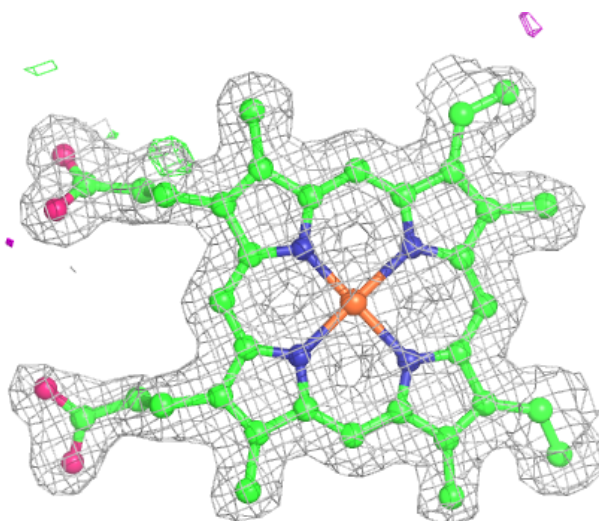
Electron density around HEC E 201:

$2mF_o-DF_c$ (at 0.7 rmsd) in gray
 mF_o-DF_c (at 3 rmsd) in purple (negative)
and green (positive)



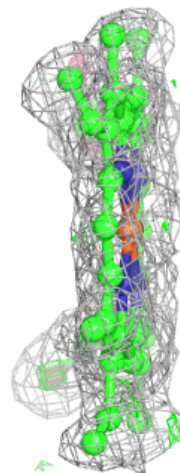
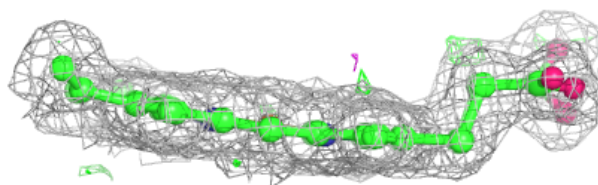
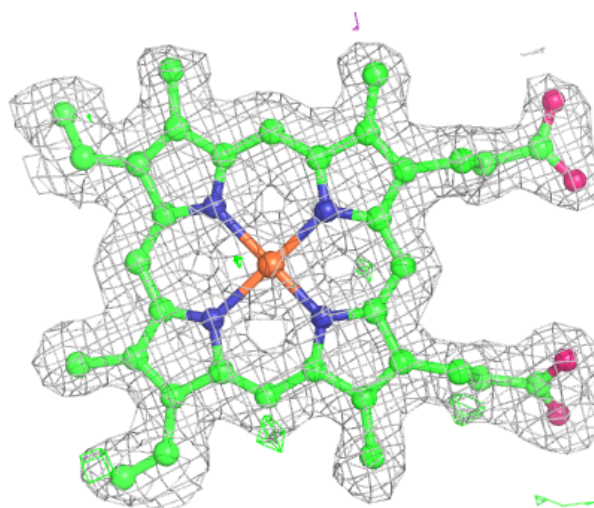
Electron density around HEC M 201:

$2mF_o-DF_c$ (at 0.7 rmsd) in gray
 mF_o-DF_c (at 3 rmsd) in purple (negative)
and green (positive)



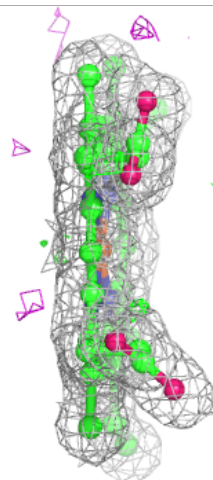
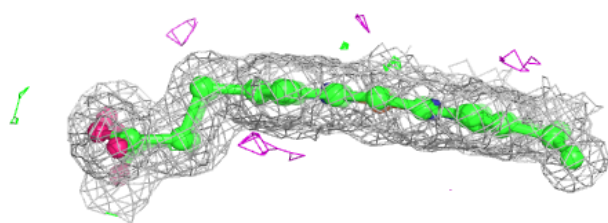
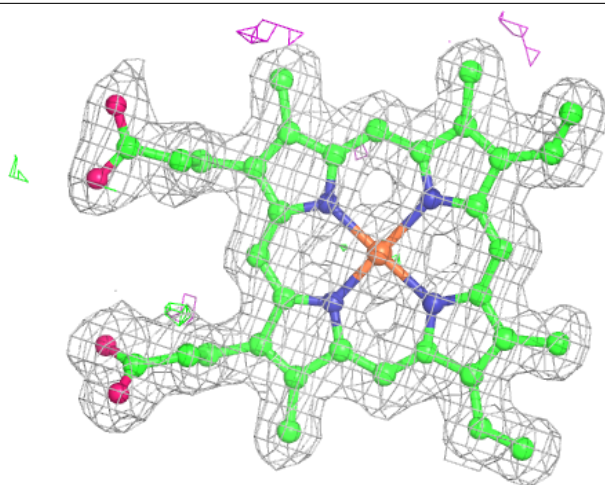
Electron density around HEC I 201:

$2mF_o-DF_c$ (at 0.7 rmsd) in gray
 mF_o-DF_c (at 3 rmsd) in purple (negative)
and green (positive)



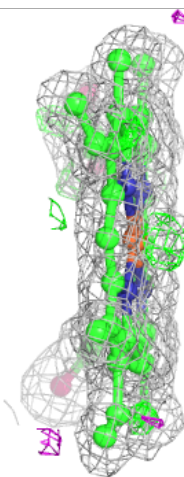
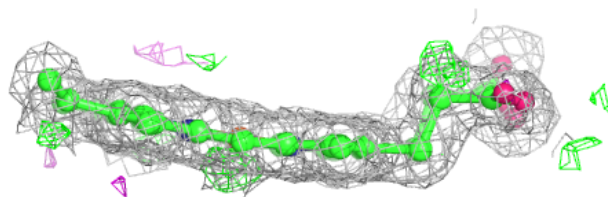
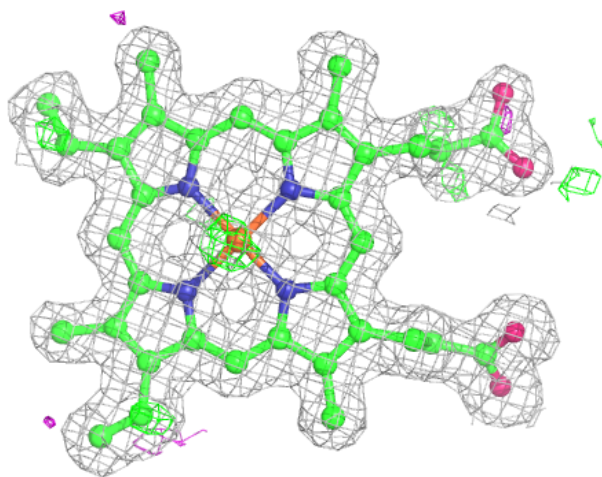
Electron density around HEC J 201:

$2mF_o-DF_c$ (at 0.7 rmsd) in gray
 mF_o-DF_c (at 3 rmsd) in purple (negative)
and green (positive)



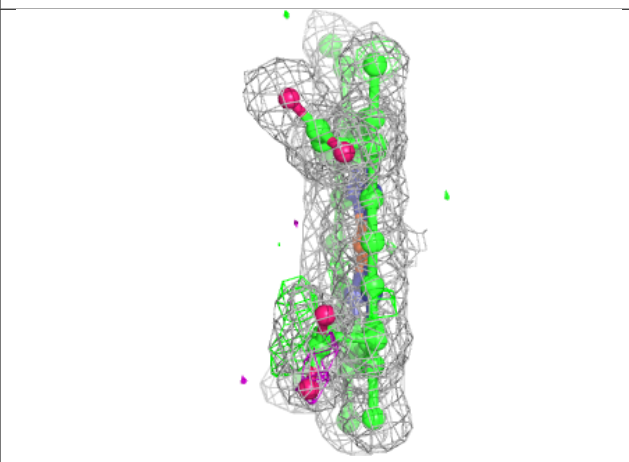
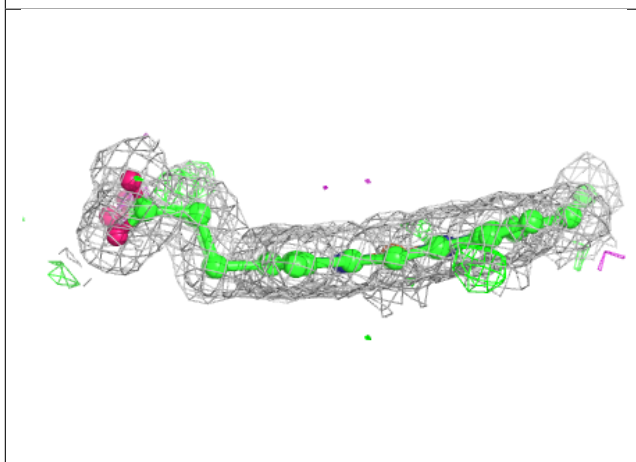
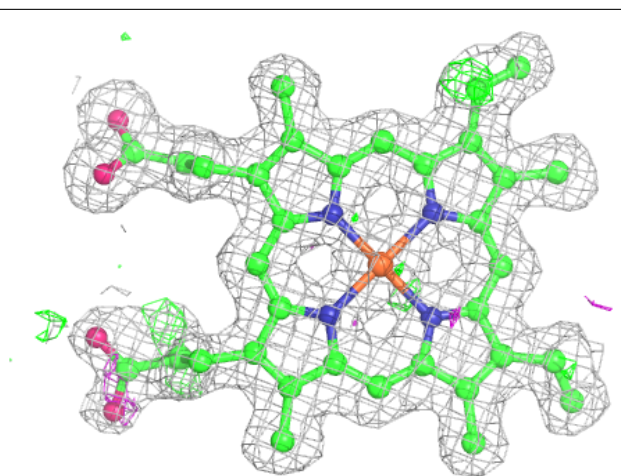
Electron density around HEC B 201:

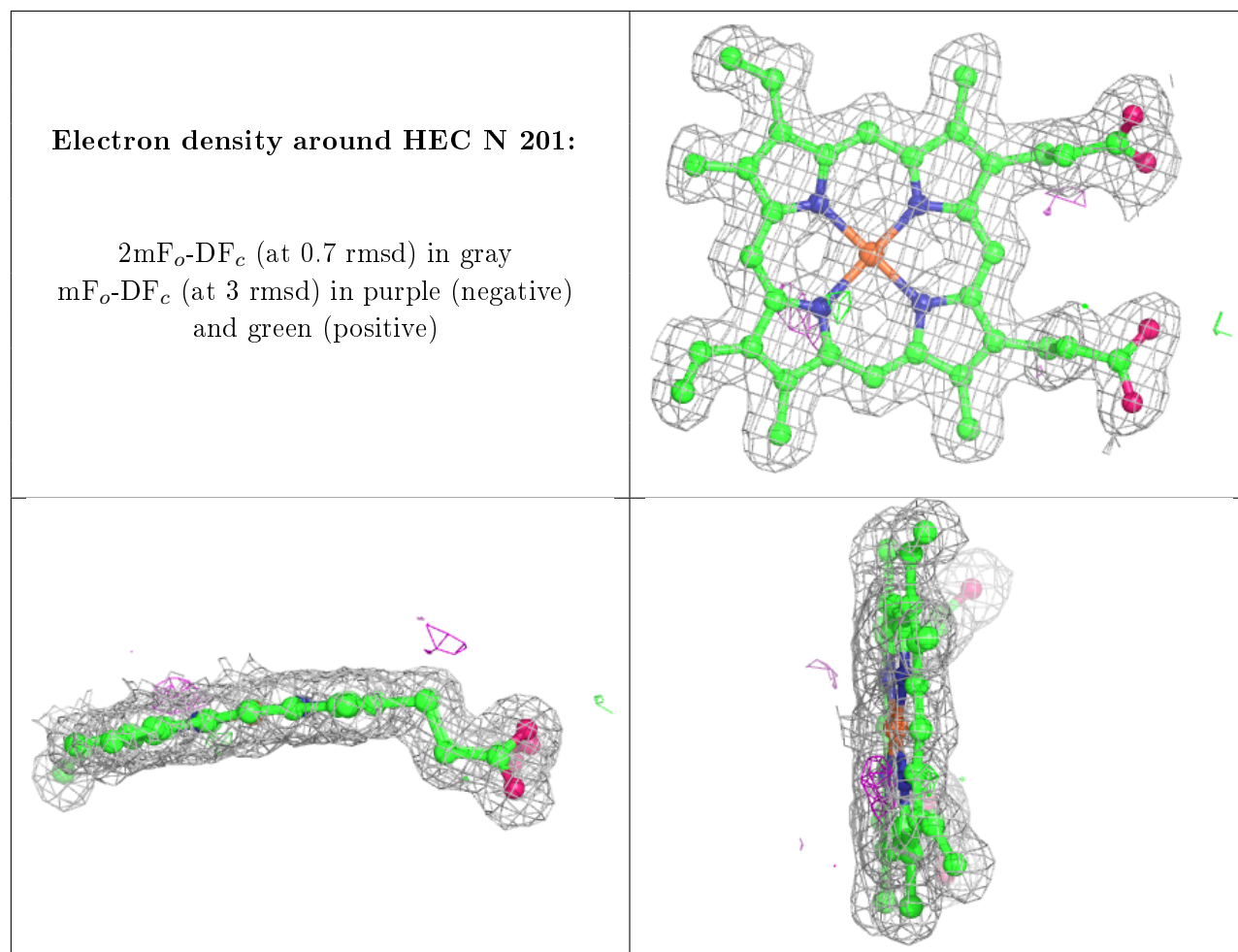
$2mF_o-DF_c$ (at 0.7 rmsd) in gray
 mF_o-DF_c (at 3 rmsd) in purple (negative)
and green (positive)



Electron density around HEC F 201:

$2mF_o-DF_c$ (at 0.7 rmsd) in gray
 mF_o-DF_c (at 3 rmsd) in purple (negative)
and green (positive)





6.5 Other polymers [i](#)

There are no such residues in this entry.