



Full wwPDB X-ray Structure Validation Report ⓘ

May 17, 2020 – 03:19 pm BST

PDB ID : 1GZ8
Title : HUMAN CYCLIN DEPENDENT KINASE 2 COMPLEXED WITH THE INHIBITOR 2-Amino-6-(3'-methyl-2'-oxo)butoxypurine
Authors : Davies, T.; Endicott, J.; Johnson, L.; Noble, M.; Tucker, J.
Deposited on : 2002-05-17
Resolution : 1.30 Å(reported)

This is a Full wwPDB X-ray Structure Validation Report for a publicly released PDB entry.

We welcome your comments at validation@mail.wwpdb.org

A user guide is available at

<https://www.wwpdb.org/validation/2017/XrayValidationReportHelp>

with specific help available everywhere you see the ⓘ symbol.

The following versions of software and data (see [references ⓘ](#)) were used in the production of this report:

MolProbity : 4.02b-467
Mogul : 1.8.5 (274361), CSD as541be (2020)
Xtriage (Phenix) : 1.13
EDS : 2.11
Percentile statistics : 20191225.v01 (using entries in the PDB archive December 25th 2019)
Refmac : 5.8.0158
CCP4 : 7.0.044 (Gargrove)
Ideal geometry (proteins) : Engh & Huber (2001)
Ideal geometry (DNA, RNA) : Parkinson et al. (1996)
Validation Pipeline (wwPDB-VP) : 2.11

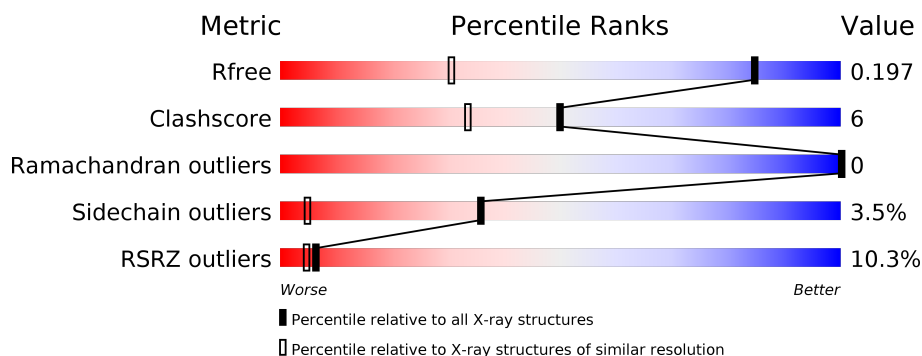
1 Overall quality at a glance

The following experimental techniques were used to determine the structure:

X-RAY DIFFRACTION

The reported resolution of this entry is 1.30 Å.

Percentile scores (ranging between 0-100) for global validation metrics of the entry are shown in the following graphic. The table shows the number of entries on which the scores are based.



Metric	Whole archive (#Entries)	Similar resolution (#Entries, resolution range(Å))
R_{free}	130704	1058 (1.30-1.30)
Clashscore	141614	1101 (1.30-1.30)
Ramachandran outliers	138981	1058 (1.30-1.30)
Sidechain outliers	138945	1058 (1.30-1.30)
RSRZ outliers	127900	1029 (1.30-1.30)

The table below summarises the geometric issues observed across the polymeric chains and their fit to the electron density. The red, orange, yellow and green segments on the lower bar indicate the fraction of residues that contain outliers for ≥ 3 , 2, 1 and 0 types of geometric quality criteria respectively. A grey segment represents the fraction of residues that are not modelled. The numeric value for each fraction is indicated below the corresponding segment, with a dot representing fractions $\leq 5\%$. The upper red bar (where present) indicates the fraction of residues that have poor fit to the electron density. The numeric value is given above the bar.

Mol	Chain	Length	Quality of chain
1	A	299	<div> <div>10%</div> <div>83%</div> <div>13%</div> <div>..</div> </div>

2 Entry composition [i](#)

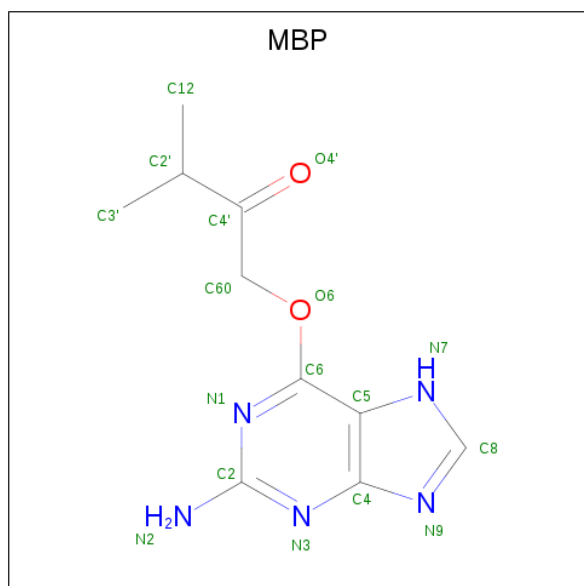
There are 3 unique types of molecules in this entry. The entry contains 2731 atoms, of which 0 are hydrogens and 0 are deuteriums.

In the tables below, the ZeroOcc column contains the number of atoms modelled with zero occupancy, the AltConf column contains the number of residues with at least one atom in alternate conformation and the Trace column contains the number of residues modelled with at most 2 atoms.

- Molecule 1 is a protein called CELL DIVISION PROTEIN KINASE 2.

Mol	Chain	Residues	Atoms					ZeroOcc	AltConf	Trace
1	A	291	Total	C	N	O	S	0	9	0
			2369	1546	400	414	9			

- Molecule 2 is 1-[(2-AMINO-6,9-DIHYDRO-1H-PURIN-6-YL)OXY]-3-METHYL-2-BUTANOL (three-letter code: MBP) (formula: C₁₀H₁₃N₅O₂).



Mol	Chain	Residues	Atoms				ZeroOcc	AltConf
2	A	1	Total	C	N	O	0	0
			17	10	5	2		

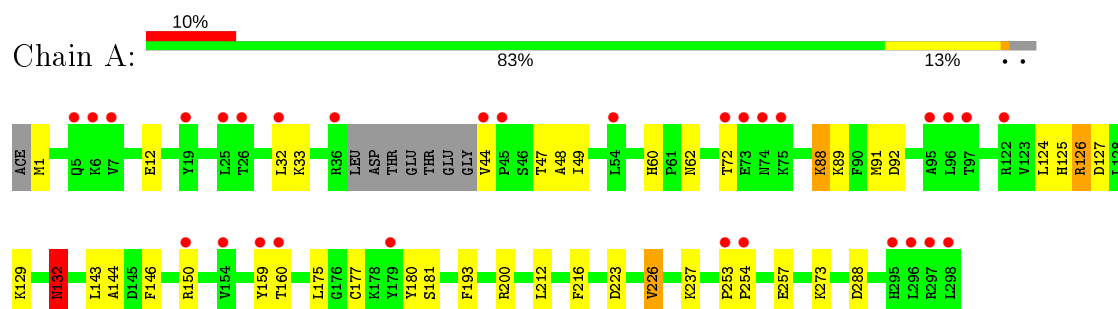
- Molecule 3 is water.

Mol	Chain	Residues	Atoms	ZeroOcc	AltConf
3	A	345	Total O	0	0
			345 345		

3 Residue-property plots [i](#)

These plots are drawn for all protein, RNA and DNA chains in the entry. The first graphic for a chain summarises the proportions of the various outlier classes displayed in the second graphic. The second graphic shows the sequence view annotated by issues in geometry and electron density. Residues are color-coded according to the number of geometric quality criteria for which they contain at least one outlier: green = 0, yellow = 1, orange = 2 and red = 3 or more. A red dot above a residue indicates a poor fit to the electron density ($RSRZ > 2$). Stretches of 2 or more consecutive residues without any outlier are shown as a green connector. Residues present in the sample, but not in the model, are shown in grey.

• Molecule 1: CELL DIVISION PROTEIN KINASE 2



4 Data and refinement statistics

Property	Value	Source
Space group	P 21 21 21	Depositor
Cell constants a, b, c, α , β , γ	52.86Å 71.07Å 71.84Å 90.00° 90.00° 90.00°	Depositor
Resolution (Å)	50.64 – 1.30 21.21 – 1.31	Depositor EDS
% Data completeness (in resolution range)	94.5 (50.64-1.30) 95.7 (21.21-1.31)	Depositor EDS
R_{merge}	0.05	Depositor
R_{sym}	(Not available)	Depositor
$\langle I/\sigma(I) \rangle$ ¹	1.48 (at 1.30Å)	Xtriage
Refinement program	REFMAC 5.0	Depositor
R, R_{free}	0.151 , 0.185 0.163 , 0.197	Depositor DCC
R_{free} test set	3380 reflections (5.32%)	wwPDB-VP
Wilson B-factor (Å ²)	16.1	Xtriage
Anisotropy	0.174	Xtriage
Bulk solvent k_{sol} (e/Å ³), B_{sol} (Å ²)	0.41 , 55.9	EDS
L-test for twinning ²	$\langle L \rangle = 0.49$, $\langle L^2 \rangle = 0.33$	Xtriage
Estimated twinning fraction	0.013 for -h,l,k	Xtriage
F_o, F_c correlation	0.97	EDS
Total number of atoms	2731	wwPDB-VP
Average B, all atoms (Å ²)	21.0	wwPDB-VP

Xtriage's analysis on translational NCS is as follows: *The largest off-origin peak in the Patterson function is 6.47% of the height of the origin peak. No significant pseudotranslation is detected.*

¹Intensities estimated from amplitudes.

²Theoretical values of $\langle |L| \rangle$, $\langle L^2 \rangle$ for acentric reflections are 0.5, 0.333 respectively for untwinned datasets, and 0.375, 0.2 for perfectly twinned datasets.

5 Model quality

5.1 Standard geometry

Bond lengths and bond angles in the following residue types are not validated in this section: CSD, MBP

The Z score for a bond length (or angle) is the number of standard deviations the observed value is removed from the expected value. A bond length (or angle) with $|Z| > 5$ is considered an outlier worth inspection. RMSZ is the root-mean-square of all Z scores of the bond lengths (or angles).

Mol	Chain	Bond lengths		Bond angles	
		RMSZ	$\# Z > 5$	RMSZ	$\# Z > 5$
1	A	0.89	3/2468 (0.1%)	1.00	10/3348 (0.3%)

All (3) bond length outliers are listed below:

Mol	Chain	Res	Type	Atoms	Z	Observed(Å)	Ideal(Å)
1	A	181	SER	CB-OG	5.93	1.50	1.42
1	A	181	SER	CA-CB	5.67	1.61	1.52
1	A	132	ASN	CG-OD1	5.45	1.35	1.24

All (10) bond angle outliers are listed below:

Mol	Chain	Res	Type	Atoms	Z	Observed(°)	Ideal(°)
1	A	254	PRO	N-CD-CG	-9.47	88.99	103.20
1	A	288	ASP	CB-CG-OD2	7.45	125.00	118.30
1	A	150	ARG	NE-CZ-NH1	7.09	123.84	120.30
1	A	223	ASP	CB-CG-OD2	6.34	124.01	118.30
1	A	226[A]	VAL	CA-CB-CG2	6.07	120.01	110.90
1	A	226[B]	VAL	CA-CB-CG2	6.07	120.01	110.90
1	A	253	PRO	N-CA-C	5.59	126.63	112.10
1	A	193	PHE	CB-CG-CD2	5.12	124.38	120.80
1	A	91	MET	CG-SD-CE	-5.11	92.03	100.20
1	A	92	ASP	CB-CG-OD2	5.04	122.84	118.30

There are no chirality outliers.

There are no planarity outliers.

5.2 Too-close contacts ⓘ

In the following table, the Non-H and H(model) columns list the number of non-hydrogen atoms and hydrogen atoms in the chain respectively. The H(added) column lists the number of hydrogen atoms added and optimized by MolProbity. The Clashes column lists the number of clashes within the asymmetric unit, whereas Symm-Clashes lists symmetry related clashes.

Mol	Chain	Non-H	H(model)	H(added)	Clashes	Symm-Clashes
1	A	2369	0	2433	28	0
2	A	17	0	13	2	0
3	A	345	0	0	8	0
All	All	2731	0	2446	28	0

The all-atom clashscore is defined as the number of clashes found per 1000 atoms (including hydrogen atoms). The all-atom clashscore for this structure is 6.

All (28) close contacts within the same asymmetric unit are listed below, sorted by their clash magnitude.

Atom-1	Atom-2	Interatomic distance (Å)	Clash overlap (Å)
1:A:177:CSD:SG	1:A:177:CSD:OD1	1.93	1.26
1:A:88:LYS:HE2	1:A:88:LYS:HA	1.43	0.99
1:A:125:HIS:HD2	1:A:127:ASP:H	1.19	0.87
1:A:226[A]:VAL:HG21	3:A:2277:HOH:O	1.75	0.86
1:A:257:GLU:OE2	3:A:2296:HOH:O	1.94	0.85
1:A:60:HIS:HD2	1:A:62:ASN:H	1.27	0.80
1:A:60:HIS:CD2	1:A:62:ASN:H	2.03	0.77
1:A:125:HIS:CD2	1:A:127:ASP:H	2.08	0.65
1:A:237:LYS:CE	3:A:2107:HOH:O	2.47	0.62
1:A:88:LYS:HE3	3:A:2210:HOH:O	1.99	0.61
1:A:212[A]:LEU:HG	1:A:216:PHE:CZ	2.36	0.61
1:A:88:LYS:CE	1:A:88:LYS:HA	2.27	0.59
1:A:237:LYS:HE3	3:A:2107:HOH:O	2.04	0.56
1:A:125:HIS:HE1	1:A:144:ALA:O	1.87	0.55
1:A:33:LYS:HZ1	2:A:1300:MBP:H7	1.55	0.54
1:A:44:VAL:HG11	1:A:49:ILE:HD11	1.91	0.53
1:A:1:MET:SD	1:A:32[A]:LEU:HD21	2.50	0.51
1:A:33:LYS:NZ	2:A:1300:MBP:H7	2.11	0.47
1:A:257:GLU:CD	3:A:2296:HOH:O	2.44	0.47
1:A:159:TYR:CE2	1:A:160:THR:HG23	2.51	0.46
1:A:129:LYS:H	1:A:132:ASN:HD21	1.64	0.45
1:A:200:ARG:HG2	3:A:2221:HOH:O	2.18	0.42
1:A:175:LEU:HD21	1:A:212[A]:LEU:HD21	2.00	0.42
1:A:88:LYS:HE2	1:A:88:LYS:CA	2.30	0.42

Continued on next page...

Continued from previous page...

Atom-1	Atom-2	Interatomic distance (Å)	Clash overlap (Å)
1:A:89:LYS:HE3	3:A:2098:HOH:O	2.20	0.41
1:A:125:HIS:CD2	1:A:125:HIS:C	2.93	0.40
1:A:47:THR:HG23	1:A:48:ALA:N	2.35	0.40
1:A:126:ARG:HD2	1:A:180:TYR:OH	2.22	0.40

There are no symmetry-related clashes.

5.3 Torsion angles [i](#)

5.3.1 Protein backbone [i](#)

In the following table, the Percentiles column shows the percent Ramachandran outliers of the chain as a percentile score with respect to all X-ray entries followed by that with respect to entries of similar resolution.

The Analysed column shows the number of residues for which the backbone conformation was analysed, and the total number of residues.

Mol	Chain	Analysed	Favoured	Allowed	Outliers	Percentiles	
1	A	295/299 (99%)	291 (99%)	4 (1%)	0	100	100

There are no Ramachandran outliers to report.

5.3.2 Protein sidechains [i](#)

In the following table, the Percentiles column shows the percent sidechain outliers of the chain as a percentile score with respect to all X-ray entries followed by that with respect to entries of similar resolution.

The Analysed column shows the number of residues for which the sidechain conformation was analysed, and the total number of residues.

Mol	Chain	Analysed	Rotameric	Outliers	Percentiles	
1	A	264/262 (101%)	255 (97%)	9 (3%)	37	5

All (9) residues with a non-rotameric sidechain are listed below:

Mol	Chain	Res	Type
1	A	12	GLU
1	A	72	THR

Continued on next page...

Continued from previous page...

Mol	Chain	Res	Type
1	A	88	LYS
1	A	124	LEU
1	A	126	ARG
1	A	132	ASN
1	A	143	LEU
1	A	146	PHE
1	A	273	LYS

Some sidechains can be flipped to improve hydrogen bonding and reduce clashes. All (3) such sidechains are listed below:

Mol	Chain	Res	Type
1	A	60	HIS
1	A	125	HIS
1	A	132	ASN

5.3.3 RNA ⓘ

There are no RNA molecules in this entry.

5.4 Non-standard residues in protein, DNA, RNA chains ⓘ

1 non-standard protein/DNA/RNA residue is modelled in this entry.

In the following table, the Counts columns list the number of bonds (or angles) for which Mogul statistics could be retrieved, the number of bonds (or angles) that are observed in the model and the number of bonds (or angles) that are defined in the Chemical Component Dictionary. The Link column lists molecule types, if any, to which the group is linked. The Z score for a bond length (or angle) is the number of standard deviations the observed value is removed from the expected value. A bond length (or angle) with $|Z| > 2$ is considered an outlier worth inspection. RMSZ is the root-mean-square of all Z scores of the bond lengths (or angles).

Mol	Type	Chain	Res	Link	Bond lengths			Bond angles		
					Counts	RMSZ	$\# Z > 2$	Counts	RMSZ	$\# Z > 2$
1	CSD	A	177	1	3,7,8	1.20	0	1,8,10	4.52	1 (100%)

In the following table, the Chirals column lists the number of chiral outliers, the number of chiral centers analysed, the number of these observed in the model and the number defined in the Chemical Component Dictionary. Similar counts are reported in the Torsion and Rings columns. '-' means no outliers of that kind were identified.

Mol	Type	Chain	Res	Link	Chirals	Torsions	Rings
1	CSD	A	177	1	-	1/2/6/8	-

There are no bond length outliers.

All (1) bond angle outliers are listed below:

Mol	Chain	Res	Type	Atoms	Z	Observed(°)	Ideal(°)
1	A	177	CSD	OD1-SG-CB	4.52	114.13	105.54

There are no chirality outliers.

All (1) torsion outliers are listed below:

Mol	Chain	Res	Type	Atoms
1	A	177	CSD	CA-CB-SG-OD1

There are no ring outliers.

1 monomer is involved in 1 short contact:

Mol	Chain	Res	Type	Clashes	Symm-Clashes
1	A	177	CSD	1	0

5.5 Carbohydrates [i](#)

There are no carbohydrates in this entry.

5.6 Ligand geometry [i](#)

1 ligand is modelled in this entry.

In the following table, the Counts columns list the number of bonds (or angles) for which Mogul statistics could be retrieved, the number of bonds (or angles) that are observed in the model and the number of bonds (or angles) that are defined in the Chemical Component Dictionary. The Link column lists molecule types, if any, to which the group is linked. The Z score for a bond length (or angle) is the number of standard deviations the observed value is removed from the expected value. A bond length (or angle) with $|Z| > 2$ is considered an outlier worth inspection. RMSZ is the root-mean-square of all Z scores of the bond lengths (or angles).

Mol	Type	Chain	Res	Link	Bond lengths			Bond angles		
					Counts	RMSZ	# Z > 2	Counts	RMSZ	# Z > 2
2	MBP	A	1300	-	15,18,18	1.00	1 (6%)	15,25,25	2.38	6 (40%)

In the following table, the Chirals column lists the number of chiral outliers, the number of chiral

centers analysed, the number of these observed in the model and the number defined in the Chemical Component Dictionary. Similar counts are reported in the Torsion and Rings columns. '-' means no outliers of that kind were identified.

Mol	Type	Chain	Res	Link	Chirals	Torsions	Rings
2	MBP	A	1300	-	-	4/9/9/9	0/2/2/2

All (1) bond length outliers are listed below:

Mol	Chain	Res	Type	Atoms	Z	Observed(Å)	Ideal(Å)
2	A	1300	MBP	O4'-C4'	2.35	1.25	1.21

All (6) bond angle outliers are listed below:

Mol	Chain	Res	Type	Atoms	Z	Observed(°)	Ideal(°)
2	A	1300	MBP	C2-N1-C6	5.15	124.34	116.08
2	A	1300	MBP	N3-C2-N1	-4.48	121.25	127.22
2	A	1300	MBP	C60-O6-C6	3.52	121.58	116.76
2	A	1300	MBP	C5-C6-N1	-2.90	117.73	123.26
2	A	1300	MBP	N2-C2-N1	2.23	120.73	117.25
2	A	1300	MBP	O6-C6-N1	2.21	122.03	120.12

There are no chirality outliers.

All (4) torsion outliers are listed below:

Mol	Chain	Res	Type	Atoms
2	A	1300	MBP	C3'-C2'-C4'-O4'
2	A	1300	MBP	C12-C2'-C4'-O4'
2	A	1300	MBP	C12-C2'-C4'-C60
2	A	1300	MBP	C3'-C2'-C4'-C60

There are no ring outliers.

1 monomer is involved in 2 short contacts:

Mol	Chain	Res	Type	Clashes	Symm-Clashes
2	A	1300	MBP	2	0

5.7 Other polymers

There are no such residues in this entry.

5.8 Polymer linkage issues

There are no chain breaks in this entry.

6 Fit of model and data ⓘ

6.1 Protein, DNA and RNA chains ⓘ

In the following table, the column labelled ‘#RSRZ> 2’ contains the number (and percentage) of RSRZ outliers, followed by percent RSRZ outliers for the chain as percentile scores relative to all X-ray entries and entries of similar resolution. The OWAB column contains the minimum, median, 95th percentile and maximum values of the occupancy-weighted average B-factor per residue. The column labelled ‘Q< 0.9’ lists the number of (and percentage) of residues with an average occupancy less than 0.9.

Mol	Chain	Analysed	<RSRZ>	#RSRZ>2	OWAB(Å ²)	Q<0.9
1	A	290/299 (96%)	0.48	30 (10%) 6 5	10, 17, 32, 42	0

All (30) RSRZ outliers are listed below:

Mol	Chain	Res	Type	RSRZ
1	A	25	LEU	11.9
1	A	96	LEU	7.5
1	A	26	THR	6.2
1	A	44	VAL	6.1
1	A	74	ASN	5.9
1	A	159	TYR	5.7
1	A	295	HIS	4.6
1	A	297	ARG	4.4
1	A	36	ARG	3.5
1	A	97	THR	3.3
1	A	45	PRO	3.1
1	A	72	THR	3.0
1	A	254	PRO	2.9
1	A	19	TYR	2.9
1	A	7	VAL	2.8
1	A	122	ARG	2.7
1	A	75	LYS	2.6
1	A	179	TYR	2.5
1	A	253	PRO	2.4
1	A	6	LYS	2.4
1	A	54	LEU	2.4
1	A	298	LEU	2.4
1	A	150	ARG	2.3
1	A	296	LEU	2.3
1	A	73	GLU	2.3
1	A	32[A]	LEU	2.3
1	A	154	VAL	2.2

Continued on next page...

Continued from previous page...

Mol	Chain	Res	Type	RSRZ
1	A	160	THR	2.1
1	A	95	ALA	2.0
1	A	5	GLN	2.0

6.2 Non-standard residues in protein, DNA, RNA chains [i](#)

In the following table, the Atoms column lists the number of modelled atoms in the group and the number defined in the chemical component dictionary. The B-factors column lists the minimum, median, 95th percentile and maximum values of B factors of atoms in the group. The column labelled 'Q< 0.9' lists the number of atoms with occupancy less than 0.9.

Mol	Type	Chain	Res	Atoms	RSCC	RSR	B-factors(\AA^2)	Q<0.9
1	CSD	A	177	8/9	0.95	0.09	17,19,34,44	0

6.3 Carbohydrates [i](#)

There are no carbohydrates in this entry.

6.4 Ligands [i](#)

In the following table, the Atoms column lists the number of modelled atoms in the group and the number defined in the chemical component dictionary. The B-factors column lists the minimum, median, 95th percentile and maximum values of B factors of atoms in the group. The column labelled 'Q< 0.9' lists the number of atoms with occupancy less than 0.9.

Mol	Type	Chain	Res	Atoms	RSCC	RSR	B-factors(\AA^2)	Q<0.9
2	MBP	A	1300	17/17	0.94	0.10	14,19,38,40	0

6.5 Other polymers [i](#)

There are no such residues in this entry.