



wwPDB X-ray Structure Validation Summary Report ⓘ

Aug 9, 2020 – 11:23 AM BST

PDB ID : 1GZM
Title : Structure of Bovine Rhodopsin in a Trigonal Crystal Form
Authors : Li, J.
Deposited on : 2002-05-24
Resolution : 2.65 Å(reported)

This is a wwPDB X-ray Structure Validation Summary Report for a publicly released PDB entry.

We welcome your comments at validation@mail.wwpdb.org

A user guide is available at

<https://www.wwpdb.org/validation/2017/XrayValidationReportHelp>

with specific help available everywhere you see the ⓘ symbol.

The following versions of software and data (see [references ⓘ](#)) were used in the production of this report:

MolProbity : 4.02b-467
Mogul : 1.8.5 (274361), CSD as541be (2020)
Xtriage (Phenix) : 1.13
EDS : 2.13.1
buster-report : 1.1.7 (2018)
Percentile statistics : 20191225.v01 (using entries in the PDB archive December 25th 2019)
Refmac : 5.8.0158
CCP4 : 7.0.044 (Gargrove)
Ideal geometry (proteins) : Engh & Huber (2001)
Ideal geometry (DNA, RNA) : Parkinson et al. (1996)
Validation Pipeline (wwPDB-VP) : 2.13.1

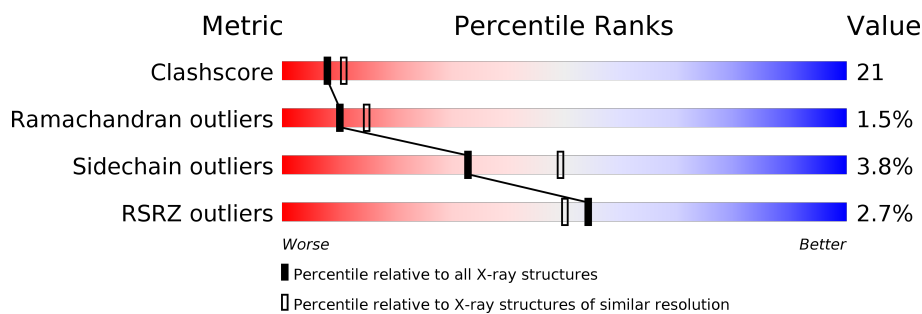
1 Overall quality at a glance

The following experimental techniques were used to determine the structure:

X-RAY DIFFRACTION

The reported resolution of this entry is 2.65 Å.

Percentile scores (ranging between 0-100) for global validation metrics of the entry are shown in the following graphic. The table shows the number of entries on which the scores are based.



Metric	Whole archive (#Entries)	Similar resolution (#Entries, resolution range(Å))
Clashscore	141614	1374 (2.68-2.64)
Ramachandran outliers	138981	1349 (2.68-2.64)
Sidechain outliers	138945	1349 (2.68-2.64)
RSRZ outliers	127900	1318 (2.68-2.64)

The table below summarises the geometric issues observed across the polymeric chains and their fit to the electron density. The red, orange, yellow and green segments on the lower bar indicate the fraction of residues that contain outliers for ≥ 3 , 2, 1 and 0 types of geometric quality criteria respectively. A grey segment represents the fraction of residues that are not modelled. The numeric value for each fraction is indicated below the corresponding segment, with a dot representing fractions $\leq 5\%$. The upper red bar (where present) indicates the fraction of residues that have poor fit to the electron density. The numeric value is given above the bar.

Mol	Chain	Length	Quality of chain
1	A	349	<div> <div>3%</div> <div>62%</div> <div>29%</div> <div>5%</div> </div>
1	B	349	<div> <div>2%</div> <div>60%</div> <div>32%</div> <div>5%</div> </div>
2	C	3	<div> <div>67%</div> <div>33%</div> </div>
2	D	3	<div> <div>67%</div> <div>33%</div> </div>
2	E	3	<div> <div>33%</div> <div>67%</div> </div>
2	F	3	<div> <div>100%</div> </div>

The following table lists non-polymeric compounds, carbohydrate monomers and non-standard

residues in protein, DNA, RNA chains that are outliers for geometric or electron-density-fit criteria:

Mol	Type	Chain	Res	Chirality	Geometry	Clashes	Electron density
2	NAG	E	1	-	-	X	-
6	LDA	B	1343	-	-	X	-
6	LDA	B	1348	-	-	X	-
7	C8E	A	1347	-	-	-	X
7	C8E	A	1348	-	-	-	X
7	C8E	B	1340	-	-	-	X
7	C8E	B	1341	-	-	-	X
7	C8E	B	1346	-	-	-	X
7	C8E	B	1347	-	-	-	X

2 Entry composition [i](#)

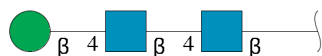
There are 9 unique types of molecules in this entry. The entry contains 5792 atoms, of which 0 are hydrogens and 0 are deuteriums.

In the tables below, the ZeroOcc column contains the number of atoms modelled with zero occupancy, the AltConf column contains the number of residues with at least one atom in alternate conformation and the Trace column contains the number of residues modelled with at most 2 atoms.

- Molecule 1 is a protein called RHODOPSIN.

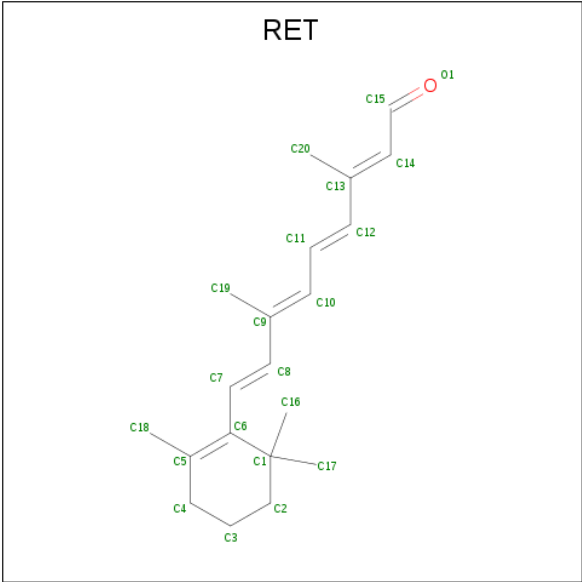
Mol	Chain	Residues	Atoms					ZeroOcc	AltConf	Trace
1	A	330	Total	C	N	O	S	0	0	1
			2606	1733	403	444	26			
1	B	330	Total	C	N	O	S	0	0	1
			2606	1733	403	444	26			

- Molecule 2 is an oligosaccharide called beta-D-mannopyranose-(1-4)-2-acetamido-2-deoxy-beta-D-glucopyranose-(1-4)-2-acetamido-2-deoxy-beta-D-glucopyranose.



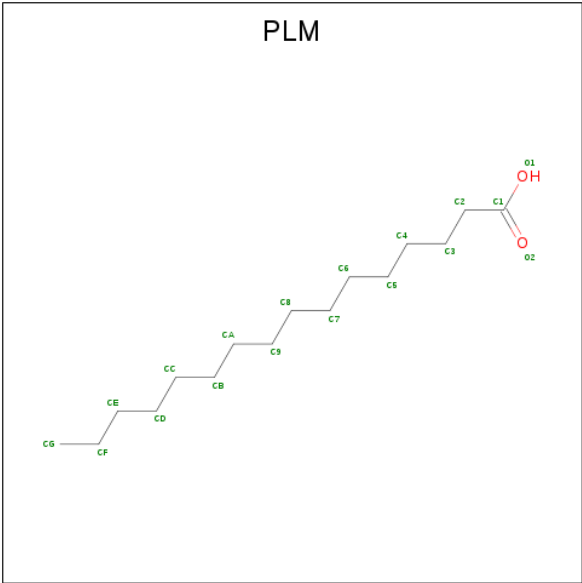
Mol	Chain	Residues	Atoms				ZeroOcc	AltConf	Trace
2	C	3	Total	C	N	O	0	0	0
			39	22	2	15			
2	D	3	Total	C	N	O	0	0	0
			39	22	2	15			
2	E	3	Total	C	N	O	0	0	0
			39	22	2	15			
2	F	3	Total	C	N	O	0	0	0
			39	22	2	15			

- Molecule 3 is RETINAL (three-letter code: RET) (formula: C₂₀H₂₈O).



Mol	Chain	Residues	Atoms			ZeroOcc	AltConf
3	A	1	Total	C		0	0
			20	20			
3	B	1	Total	C		0	0
			20	20			

- Molecule 4 is PALMITIC ACID (three-letter code: PLM) (formula: C₁₆H₃₂O₂).



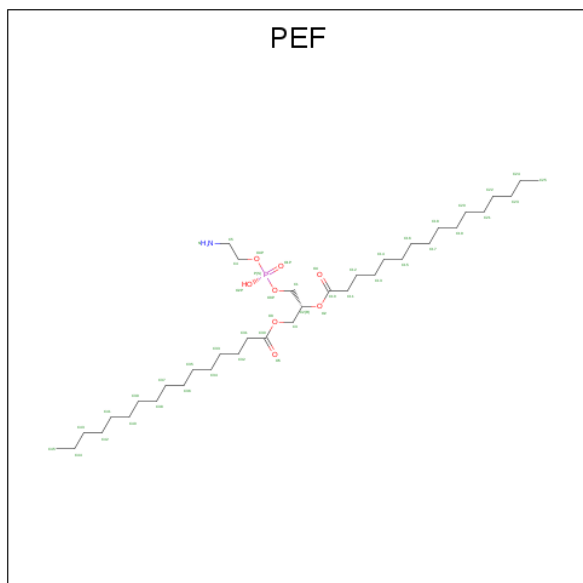
Mol	Chain	Residues	Atoms			ZeroOcc	AltConf
4	A	1	Total	C	O	0	0
			17	16	1		
4	A	1	Total	C	O	0	0
			17	16	1		

Continued on next page...

Continued from previous page...

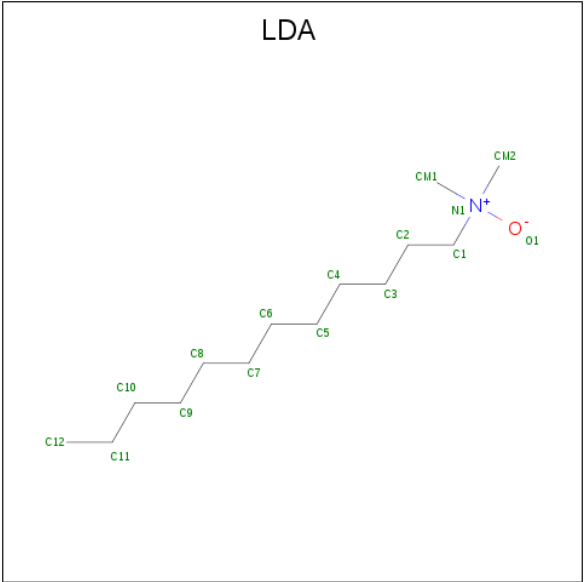
Mol	Chain	Residues	Atoms			ZeroOcc	AltConf
4	B	1	Total	C	O	0	0
			17	16	1		
4	B	1	Total	C	O	0	0
			17	16	1		

- Molecule 5 is DI-PALMITOYL-3-SN-PHOSPHATIDYLETHANOLAMINE (three-letter code: PEF) (formula: $C_{37}H_{74}NO_8P$).



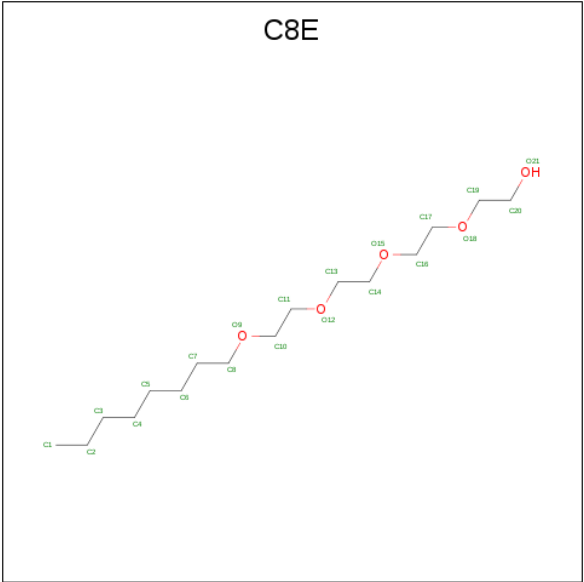
Mol	Chain	Residues	Atoms		ZeroOcc	AltConf
5	A	1	Total	C	0	0
			20	20		
5	B	1	Total	C	0	0
			24	24		

- Molecule 6 is LAURYL DIMETHYLAMINE-N-OXIDE (three-letter code: LDA) (formula: $C_{14}H_{31}NO$).



Mol	Chain	Residues	Atoms				ZeroOcc	AltConf
6	A	1	Total	C	N	O	0	0
			16	14	1	1		
6	B	1	Total	C	N	O	0	0
			16	14	1	1		
6	B	1	Total	C	N	O	0	0
			16	14	1	1		

- Molecule 7 is (HYDROXYETHYLOXY)TRI(ETHYLOXY)OCTANE (three-letter code: C8E) (formula: C₁₆H₃₄O₅).



Mol	Chain	Residues	Atoms	ZeroOcc	AltConf
7	A	1	Total C O 17 14 3	0	0
7	A	1	Total C O 15 12 3	0	0
7	A	1	Total C O 10 9 1	0	0
7	A	1	Total C O 18 14 4	0	0
7	A	1	Total C O 21 16 5	0	0
7	A	1	Total C O 12 10 2	0	0
7	B	1	Total C O 21 16 5	0	0
7	B	1	Total C O 12 10 2	0	0
7	B	1	Total C O 14 11 3	0	0
7	B	1	Total C O 14 12 2	0	0
7	B	1	Total C O 10 9 1	0	0
7	B	1	Total C O 18 14 4	0	0

- Molecule 8 is ZINC ION (three-letter code: ZN) (formula: Zn).

Mol	Chain	Residues	Atoms	ZeroOcc	AltConf
8	B	1	Total Zn 1 1	0	0
8	A	1	Total Zn 1 1	0	0

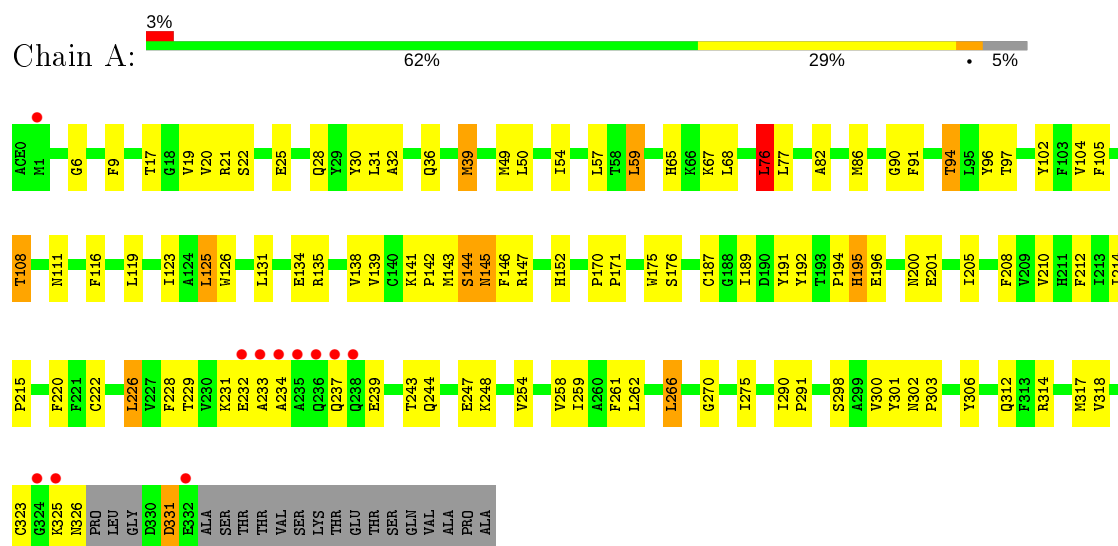
- Molecule 9 is water.

Mol	Chain	Residues	Atoms	ZeroOcc	AltConf
9	A	20	Total O 20 20	0	0
9	B	20	Total O 20 20	0	0

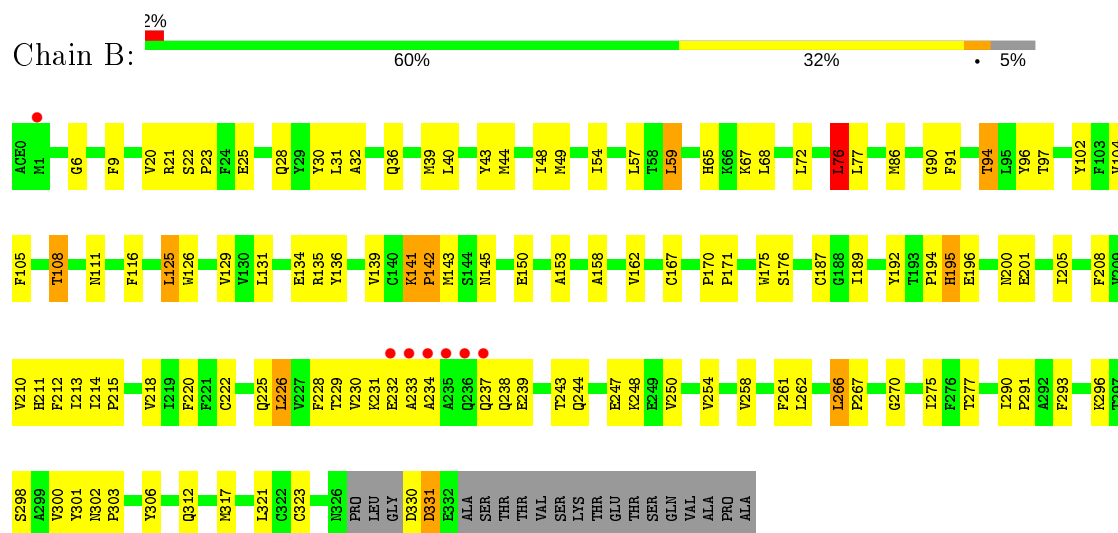
3 Residue-property plots

These plots are drawn for all protein, RNA, DNA and oligosaccharide chains in the entry. The first graphic for a chain summarises the proportions of the various outlier classes displayed in the second graphic. The second graphic shows the sequence view annotated by issues in geometry and electron density. Residues are color-coded according to the number of geometric quality criteria for which they contain at least one outlier: green = 0, yellow = 1, orange = 2 and red = 3 or more. A red dot above a residue indicates a poor fit to the electron density ($RSRZ > 2$). Stretches of 2 or more consecutive residues without any outlier are shown as a green connector. Residues present in the sample, but not in the model, are shown in grey.

• Molecule 1: RHODOPSIN



• Molecule 1: RHODOPSIN



• Molecule 2: beta-D-mannopyranose-(1-4)-2-acetamido-2-deoxy-beta-D-glucopyranose-(1-4)-2-acetamido-2-deoxy-beta-D-glucopyranose





- Molecule 2: beta-D-mannopyranose-(1-4)-2-acetamido-2-deoxy-beta-D-glucopyranose-(1-4)-2-acetamido-2-deoxy-beta-D-glucopyranose

Chain D:  67% 33%



- Molecule 2: beta-D-mannopyranose-(1-4)-2-acetamido-2-deoxy-beta-D-glucopyranose-(1-4)-2-acetamido-2-deoxy-beta-D-glucopyranose

Chain E:  33% 67%



- Molecule 2: beta-D-mannopyranose-(1-4)-2-acetamido-2-deoxy-beta-D-glucopyranose-(1-4)-2-acetamido-2-deoxy-beta-D-glucopyranose

Chain F:  100%



4 Data and refinement statistics

Property	Value	Source
Space group	P 31	Depositor
Cell constants a, b, c, α , β , γ	103.82Å 103.82Å 76.59Å 90.00° 90.00° 120.00°	Depositor
Resolution (Å)	46.00 – 2.65 44.96 – 2.65	Depositor EDS
% Data completeness (in resolution range)	97.0 (46.00-2.65) 96.8 (44.96-2.65)	Depositor EDS
R_{merge}	0.12	Depositor
R_{sym}	(Not available)	Depositor
$\langle I/\sigma(I) \rangle$ ¹	1.49 (at 2.65Å)	Xtriage
Refinement program	CNS 1.1	Depositor
R, R_{free}	0.202 , 0.235 0.187 , (Not available)	Depositor DCC
R_{free} test set	No test flags present.	wwPDB-VP
Wilson B-factor (Å ²)	62.7	Xtriage
Anisotropy	0.238	Xtriage
Bulk solvent k_{sol} (e/Å ³), B_{sol} (Å ²)	0.29 , 26.9	EDS
L-test for twinning ²	$\langle L \rangle = 0.49$, $\langle L^2 \rangle = 0.32$	Xtriage
Estimated twinning fraction	0.468 for -h,-k,l 0.047 for h,-h-k,-l 0.044 for -k,-h,-l	Xtriage
F_o, F_c correlation	0.95	EDS
Total number of atoms	5792	wwPDB-VP
Average B, all atoms (Å ²)	55.0	wwPDB-VP

Xtriage's analysis on translational NCS is as follows: *The largest off-origin peak in the Patterson function is 4.79% of the height of the origin peak. No significant pseudotranslation is detected.*

¹Intensities estimated from amplitudes.

²Theoretical values of $\langle |L| \rangle$, $\langle L^2 \rangle$ for acentric reflections are 0.5, 0.333 respectively for untwinned datasets, and 0.375, 0.2 for perfectly twinned datasets.

5 Model quality [i](#)

5.1 Standard geometry [i](#)

Bond lengths and bond angles in the following residue types are not validated in this section: ZN, BMA, NAG, ACE, LDA, RET, C8E, PEF, PLM

The Z score for a bond length (or angle) is the number of standard deviations the observed value is removed from the expected value. A bond length (or angle) with $|Z| > 5$ is considered an outlier worth inspection. RMSZ is the root-mean-square of all Z scores of the bond lengths (or angles).

Mol	Chain	Bond lengths		Bond angles	
		RMSZ	$\# Z > 5$	RMSZ	$\# Z > 5$
1	A	0.43	0/2685	0.61	1/3658 (0.0%)
1	B	0.44	0/2685	0.62	1/3658 (0.0%)
All	All	0.44	0/5370	0.61	2/7316 (0.0%)

There are no bond length outliers.

All (2) bond angle outliers are listed below:

Mol	Chain	Res	Type	Atoms	Z	Observed(°)	Ideal(°)
1	A	76	LEU	CA-CB-CG	-5.82	101.91	115.30
1	B	76	LEU	CA-CB-CG	-5.27	103.18	115.30

There are no chirality outliers.

There are no planarity outliers.

5.2 Too-close contacts [i](#)

In the following table, the Non-H and H(model) columns list the number of non-hydrogen atoms and hydrogen atoms in the chain respectively. The H(added) column lists the number of hydrogen atoms added and optimized by MolProbity. The Clashes column lists the number of clashes within the asymmetric unit, whereas Symm-Clashes lists symmetry related clashes.

Mol	Chain	Non-H	H(model)	H(added)	Clashes	Symm-Clashes
1	A	2606	0	2569	113	0
1	B	2606	0	2569	116	0
2	C	39	0	34	1	0
2	D	39	0	34	0	0
2	E	39	0	34	7	0
2	F	39	0	34	0	0
3	A	20	0	27	1	0

Continued on next page...

Continued from previous page...

Mol	Chain	Non-H	H(model)	H(added)	Clashes	Symm-Clashes
3	B	20	0	27	1	0
4	A	34	0	62	2	0
4	B	34	0	62	2	0
5	A	20	0	32	0	0
5	B	24	0	40	0	0
6	A	16	0	31	3	0
6	B	32	0	49	26	0
7	A	93	0	153	6	0
7	B	89	0	142	9	0
8	A	1	0	0	0	0
8	B	1	0	0	0	0
9	A	20	0	0	2	0
9	B	20	0	0	2	0
All	All	5792	0	5899	249	0

The all-atom clashscore is defined as the number of clashes found per 1000 atoms (including hydrogen atoms). The all-atom clashscore for this structure is 21.

The worst 5 of 249 close contacts within the same asymmetric unit are listed below, sorted by their clash magnitude.

Atom-1	Atom-2	Interatomic distance (Å)	Clash overlap (Å)
6:B:1343:LDA:H22	6:B:1348:LDA:C9	1.33	1.35
6:B:1343:LDA:C2	6:B:1348:LDA:H92	1.78	1.12
6:B:1343:LDA:HM23	6:B:1348:LDA:HM21	1.21	1.12
6:B:1343:LDA:C2	6:B:1348:LDA:C9	2.29	1.10
6:B:1343:LDA:H22	6:B:1348:LDA:H92	0.97	0.96

There are no symmetry-related clashes.

5.3 Torsion angles [i](#)

5.3.1 Protein backbone [i](#)

In the following table, the Percentiles column shows the percent Ramachandran outliers of the chain as a percentile score with respect to all X-ray entries followed by that with respect to entries of similar resolution.

The Analysed column shows the number of residues for which the backbone conformation was analysed, and the total number of residues.

Mol	Chain	Analysed	Favoured	Allowed	Outliers	Percentiles	
1	A	326/349 (93%)	301 (92%)	21 (6%)	4 (1%)	13	19
1	B	326/349 (93%)	303 (93%)	17 (5%)	6 (2%)	8	12
All	All	652/698 (93%)	604 (93%)	38 (6%)	10 (2%)	10	15

5 of 10 Ramachandran outliers are listed below:

Mol	Chain	Res	Type
1	A	144	SER
1	B	142	PRO
1	B	143	MET
1	A	331	ASP
1	B	238	GLN

5.3.2 Protein sidechains ⓘ

In the following table, the Percentiles column shows the percent sidechain outliers of the chain as a percentile score with respect to all X-ray entries followed by that with respect to entries of similar resolution.

The Analysed column shows the number of residues for which the sidechain conformation was analysed, and the total number of residues.

Mol	Chain	Analysed	Rotameric	Outliers	Percentiles	
1	A	278/296 (94%)	268 (96%)	10 (4%)	35	51
1	B	278/296 (94%)	267 (96%)	11 (4%)	31	47
All	All	556/592 (94%)	535 (96%)	21 (4%)	33	49

5 of 21 residues with a non-rotameric sidechain are listed below:

Mol	Chain	Res	Type
1	A	266	LEU
1	B	39	MET
1	B	141	LYS
1	A	226	LEU
1	B	145	ASN

Some sidechains can be flipped to improve hydrogen bonding and reduce clashes. 5 of 10 such sidechains are listed below:

Mol	Chain	Res	Type
1	B	111	ASN

Continued on next page...

Continued from previous page...

Mol	Chain	Res	Type
1	B	145	ASN
1	B	244	GLN
1	A	315	ASN
1	B	225	GLN

5.3.3 RNA ⓘ

There are no RNA molecules in this entry.

5.4 Non-standard residues in protein, DNA, RNA chains ⓘ

There are no non-standard protein/DNA/RNA residues in this entry.

5.5 Carbohydrates ⓘ

12 monosaccharides are modelled in this entry.

In the following table, the Counts columns list the number of bonds (or angles) for which Mogul statistics could be retrieved, the number of bonds (or angles) that are observed in the model and the number of bonds (or angles) that are defined in the Chemical Component Dictionary. The Link column lists molecule types, if any, to which the group is linked. The Z score for a bond length (or angle) is the number of standard deviations the observed value is removed from the expected value. A bond length (or angle) with $|Z| > 2$ is considered an outlier worth inspection. RMSZ is the root-mean-square of all Z scores of the bond lengths (or angles).

Mol	Type	Chain	Res	Link	Bond lengths			Bond angles		
					Counts	RMSZ	$\# Z > 2$	Counts	RMSZ	$\# Z > 2$
2	NAG	C	1	1,2	14,14,15	0.68	0	17,19,21	0.66	0
2	NAG	C	2	2	14,14,15	0.64	0	17,19,21	0.79	0
2	BMA	C	3	2	11,11,12	0.53	0	15,15,17	0.31	0
2	NAG	D	1	1,2	14,14,15	0.55	0	17,19,21	0.88	0
2	NAG	D	2	2	14,14,15	0.58	0	17,19,21	0.88	1 (5%)
2	BMA	D	3	2	11,11,12	0.49	0	15,15,17	0.43	0
2	NAG	E	1	1,2	14,14,15	0.63	0	17,19,21	0.62	0
2	NAG	E	2	2	14,14,15	0.65	0	17,19,21	0.69	0
2	BMA	E	3	2	11,11,12	0.57	0	15,15,17	0.38	0
2	NAG	F	1	1,2	14,14,15	0.62	0	17,19,21	0.74	0
2	NAG	F	2	2	14,14,15	0.71	0	17,19,21	0.64	0
2	BMA	F	3	2	11,11,12	0.55	0	15,15,17	0.41	0

In the following table, the Chirals column lists the number of chiral outliers, the number of chiral

centers analysed, the number of these observed in the model and the number defined in the Chemical Component Dictionary. Similar counts are reported in the Torsion and Rings columns. '-' means no outliers of that kind were identified.

Mol	Type	Chain	Res	Link	Chirals	Torsions	Rings
2	NAG	C	1	1,2	-	5/6/23/26	0/1/1/1
2	NAG	C	2	2	-	2/6/23/26	0/1/1/1
2	BMA	C	3	2	-	2/2/19/22	0/1/1/1
2	NAG	D	1	1,2	-	3/6/23/26	0/1/1/1
2	NAG	D	2	2	-	2/6/23/26	0/1/1/1
2	BMA	D	3	2	-	2/2/19/22	0/1/1/1
2	NAG	E	1	1,2	-	4/6/23/26	0/1/1/1
2	NAG	E	2	2	-	4/6/23/26	0/1/1/1
2	BMA	E	3	2	-	0/2/19/22	0/1/1/1
2	NAG	F	1	1,2	-	3/6/23/26	0/1/1/1
2	NAG	F	2	2	-	3/6/23/26	0/1/1/1
2	BMA	F	3	2	-	2/2/19/22	0/1/1/1

There are no bond length outliers.

All (1) bond angle outliers are listed below:

Mol	Chain	Res	Type	Atoms	Z	Observed(°)	Ideal(°)
2	D	2	NAG	C2-N2-C7	-2.48	119.37	122.90

There are no chirality outliers.

5 of 32 torsion outliers are listed below:

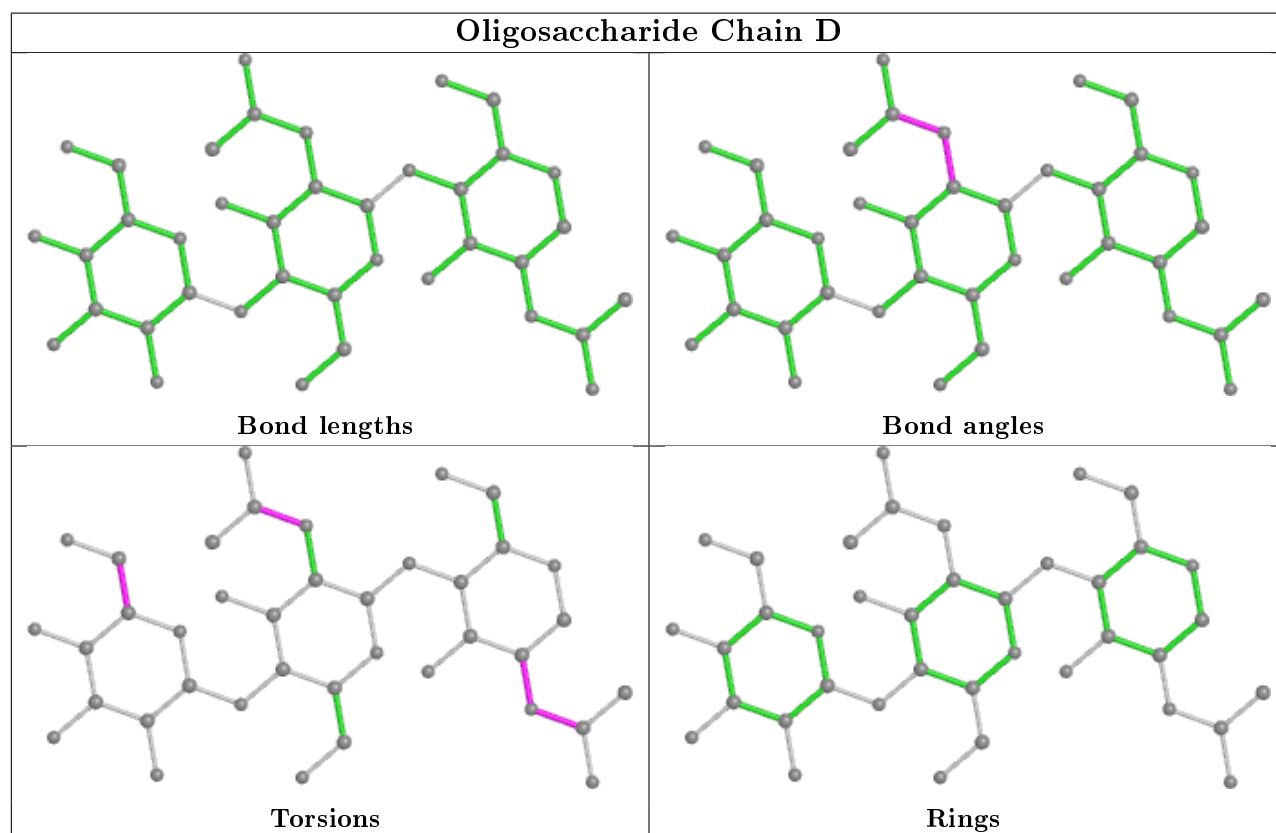
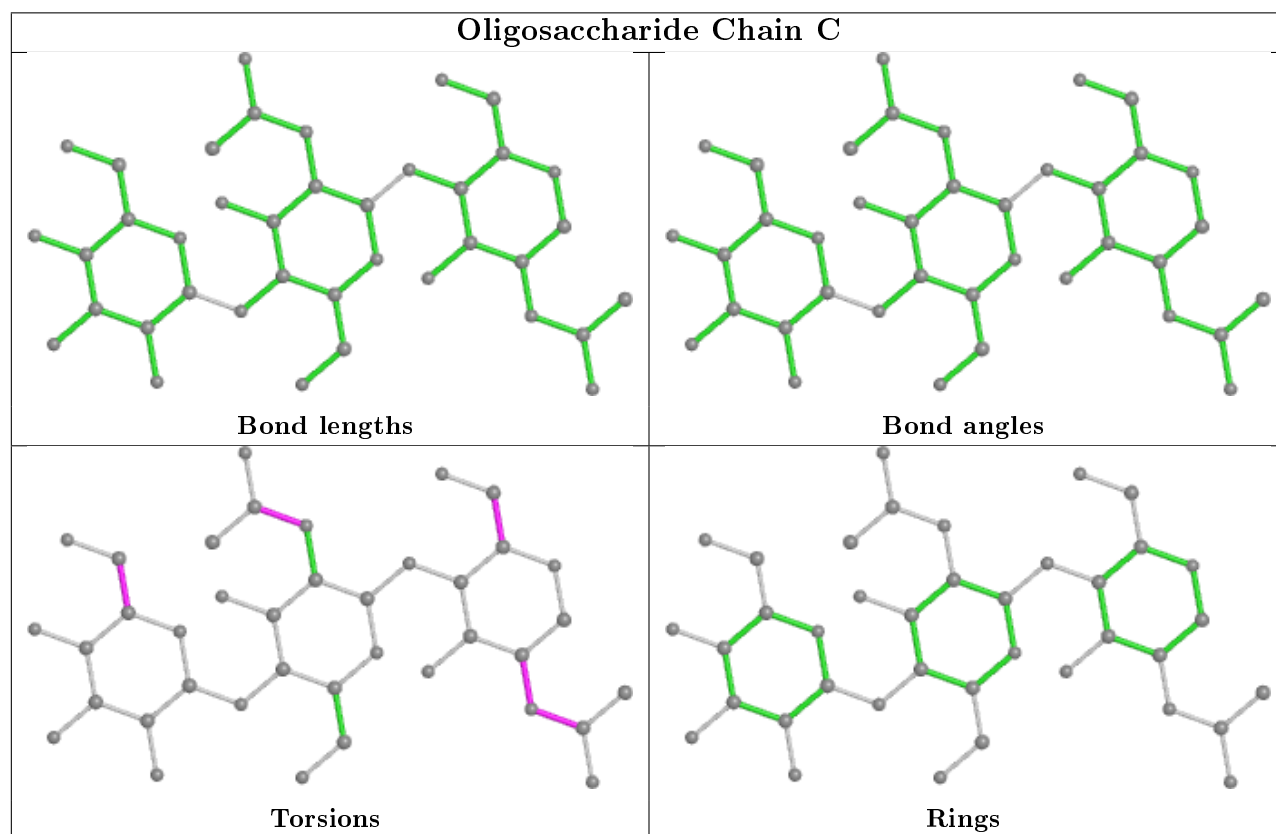
Mol	Chain	Res	Type	Atoms
2	C	1	NAG	C8-C7-N2-C2
2	C	1	NAG	O7-C7-N2-C2
2	C	2	NAG	C8-C7-N2-C2
2	C	2	NAG	O7-C7-N2-C2
2	E	1	NAG	C8-C7-N2-C2

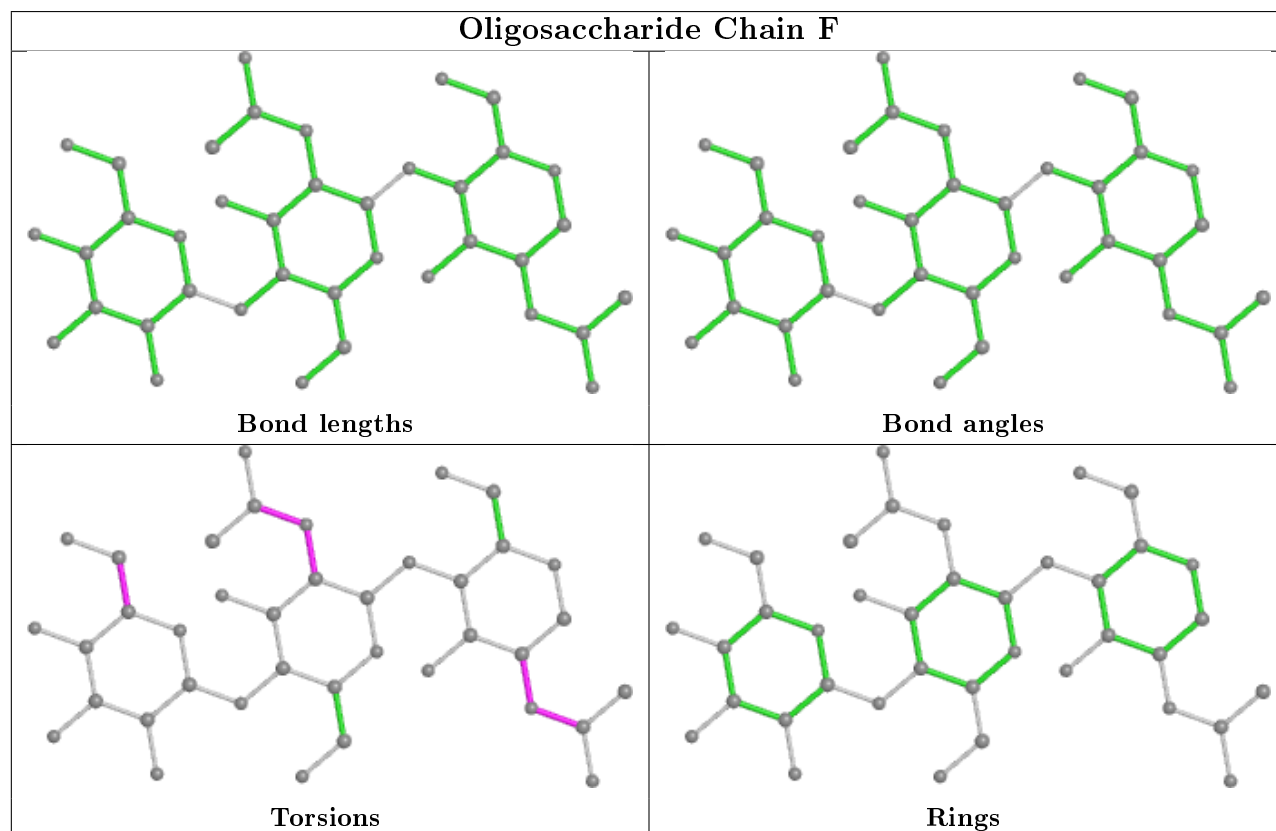
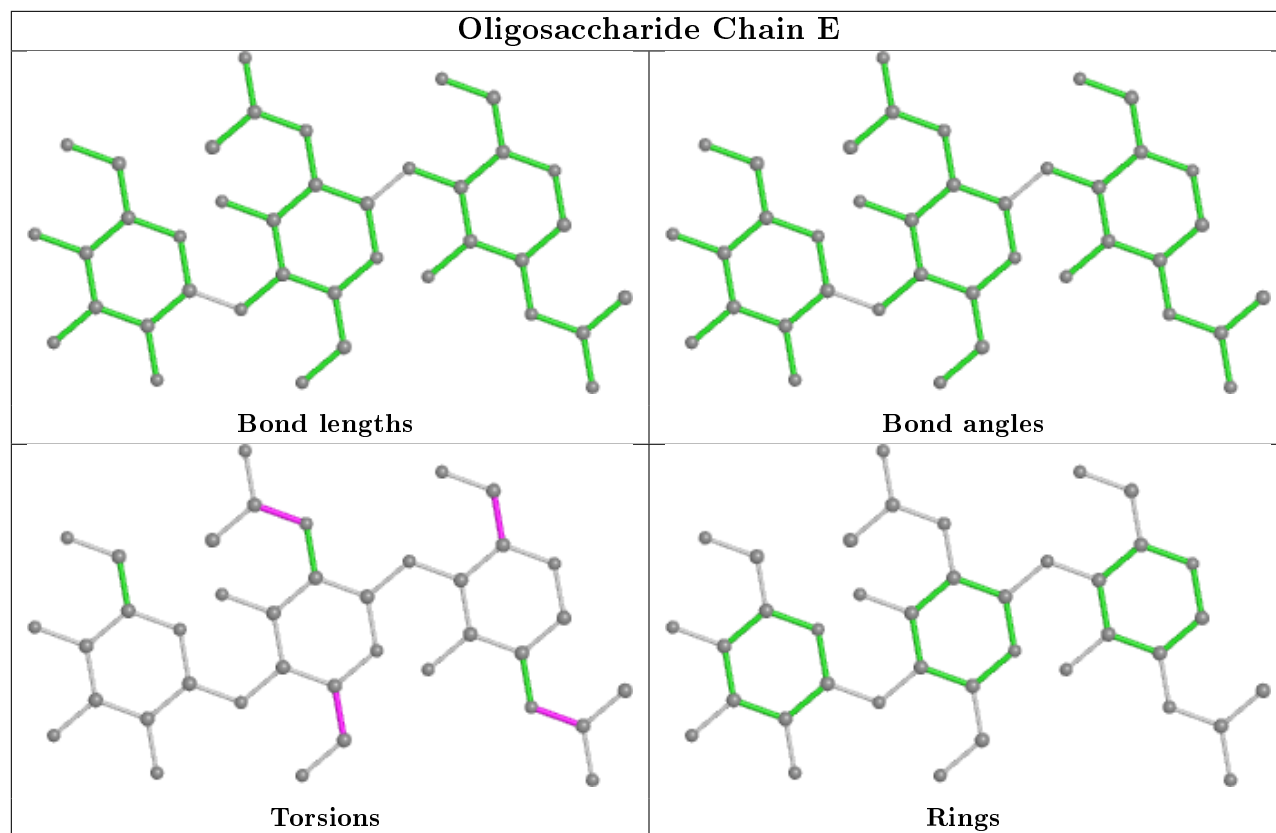
There are no ring outliers.

3 monomers are involved in 8 short contacts:

Mol	Chain	Res	Type	Clashes	Symm-Clashes
2	E	2	NAG	6	0
2	C	1	NAG	1	0
2	E	1	NAG	7	0

The following is a two-dimensional graphical depiction of Mogul quality analysis of bond lengths, bond angles, torsion angles, and ring geometry for oligosaccharide.





5.6 Ligand geometry

Of 25 ligands modelled in this entry, 2 are monoatomic - leaving 23 for Mogul analysis.

In the following table, the Counts columns list the number of bonds (or angles) for which Mogul statistics could be retrieved, the number of bonds (or angles) that are observed in the model and the number of bonds (or angles) that are defined in the Chemical Component Dictionary. The Link column lists molecule types, if any, to which the group is linked. The Z score for a bond length (or angle) is the number of standard deviations the observed value is removed from the expected value. A bond length (or angle) with $|Z| > 2$ is considered an outlier worth inspection. RMSZ is the root-mean-square of all Z scores of the bond lengths (or angles).

Mol	Type	Chain	Res	Link	Bond lengths			Bond angles		
					Counts	RMSZ	# Z > 2	Counts	RMSZ	# Z > 2
6	LDA	B	1348	-	12,15,15	0.26	0	14,17,17	2.00	2 (14%)
7	C8E	B	1344	-	13,13,20	0.27	0	12,12,19	0.36	0
4	PLM	A	1334	1	16,16,17	0.91	1 (6%)	15,15,17	0.63	0
5	PEF	B	1342	-	22,22,46	0.28	0	20,20,51	0.46	0
7	C8E	A	1343	-	16,16,20	0.30	0	15,15,19	0.33	0
7	C8E	B	1346	-	9,9,20	0.30	0	8,8,19	0.41	0
5	PEF	A	1341	-	18,18,46	0.33	0	16,16,51	0.42	0
4	PLM	A	1333	1	16,16,17	0.93	1 (6%)	15,15,17	0.62	0
6	LDA	B	1343	-	12,15,15	0.17	0	14,17,17	1.84	2 (14%)
7	C8E	B	1341	-	11,11,20	0.25	0	10,10,19	0.39	0
7	C8E	A	1345	-	9,9,20	0.25	0	8,8,19	0.51	0
3	RET	A	1332	1	20,20,21	1.41	2 (10%)	27,27,28	1.57	8 (29%)
4	PLM	B	1334	1	16,16,17	0.98	1 (6%)	15,15,17	0.52	0
7	C8E	B	1340	-	20,20,20	0.20	0	19,19,19	0.33	0
7	C8E	A	1346	-	17,17,20	0.29	0	16,16,19	0.39	0
7	C8E	B	1347	-	17,17,20	0.30	0	16,16,19	0.37	0
7	C8E	A	1347	-	20,20,20	0.32	0	19,19,19	0.40	0
7	C8E	A	1344	-	14,14,20	0.18	0	13,13,19	0.47	0
7	C8E	B	1345	-	13,13,20	0.23	0	12,12,19	0.40	0
3	RET	B	1332	1	20,20,21	1.39	2 (10%)	27,27,28	1.58	9 (33%)
4	PLM	B	1333	1	16,16,17	0.92	1 (6%)	15,15,17	0.63	0
7	C8E	A	1348	-	11,11,20	0.23	0	10,10,19	0.46	0
6	LDA	A	1342	-	12,15,15	0.47	0	14,17,17	0.77	0

In the following table, the Chirals column lists the number of chiral outliers, the number of chiral centers analysed, the number of these observed in the model and the number defined in the Chemical Component Dictionary. Similar counts are reported in the Torsion and Rings columns. '-' means no outliers of that kind were identified.

Mol	Type	Chain	Res	Link	Chirals	Torsions	Rings
6	LDA	B	1348	-	-	8/13/13/13	-
7	C8E	B	1344	-	-	9/11/11/18	-
4	PLM	A	1334	1	-	11/14/14/15	-
5	PEF	B	1342	-	-	10/18/18/50	-
7	C8E	A	1343	-	-	12/14/14/18	-
7	C8E	B	1346	-	-	6/7/7/18	-
5	PEF	A	1341	-	-	11/14/14/50	-
4	PLM	A	1333	1	-	9/14/14/15	-
6	LDA	B	1343	-	-	9/13/13/13	-
7	C8E	B	1341	-	-	6/9/9/18	-
7	C8E	A	1345	-	-	5/7/7/18	-
3	RET	A	1332	1	-	1/13/30/31	0/1/1/1
4	PLM	B	1334	1	-	11/14/14/15	-
7	C8E	B	1340	-	-	16/18/18/18	-
7	C8E	A	1346	-	-	10/15/15/18	-
7	C8E	B	1347	-	-	8/15/15/18	-
7	C8E	A	1347	-	-	14/18/18/18	-
7	C8E	A	1344	-	-	10/12/12/18	-
7	C8E	B	1345	-	-	8/11/11/18	-
3	RET	B	1332	1	-	1/13/30/31	0/1/1/1
4	PLM	B	1333	1	-	11/14/14/15	-
7	C8E	A	1348	-	-	6/9/9/18	-
6	LDA	A	1342	-	-	8/13/13/13	-

The worst 5 of 8 bond length outliers are listed below:

Mol	Chain	Res	Type	Atoms	Z	Observed(Å)	Ideal(Å)
3	B	1332	RET	C14-C13	4.50	1.37	1.33
3	A	1332	RET	C14-C13	4.47	1.37	1.33
4	A	1333	PLM	O1-C1	-3.62	1.23	1.42
4	B	1333	PLM	O1-C1	-3.59	1.23	1.42
4	A	1334	PLM	O1-C1	-3.54	1.23	1.42

The worst 5 of 21 bond angle outliers are listed below:

Mol	Chain	Res	Type	Atoms	Z	Observed(°)	Ideal(°)
6	B	1348	LDA	CM1-N1-C1	-6.70	96.16	110.23
6	B	1343	LDA	CM2-N1-C1	-5.62	98.43	110.23

Continued on next page...

Continued from previous page...

Mol	Chain	Res	Type	Atoms	Z	Observed(°)	Ideal(°)
6	B	1343	LDA	O1-N1-C1	3.38	117.56	109.27
3	A	1332	RET	C20-C13-C12	3.30	123.28	118.08
3	B	1332	RET	C20-C13-C12	3.21	123.14	118.08

There are no chirality outliers.

5 of 200 torsion outliers are listed below:

Mol	Chain	Res	Type	Atoms
6	B	1348	LDA	N1-C1-C2-C3
6	B	1343	LDA	N1-C1-C2-C3
6	A	1342	LDA	N1-C1-C2-C3
7	B	1340	C8E	O18-C19-C20-O21
7	B	1344	C8E	O9-C10-C11-O12

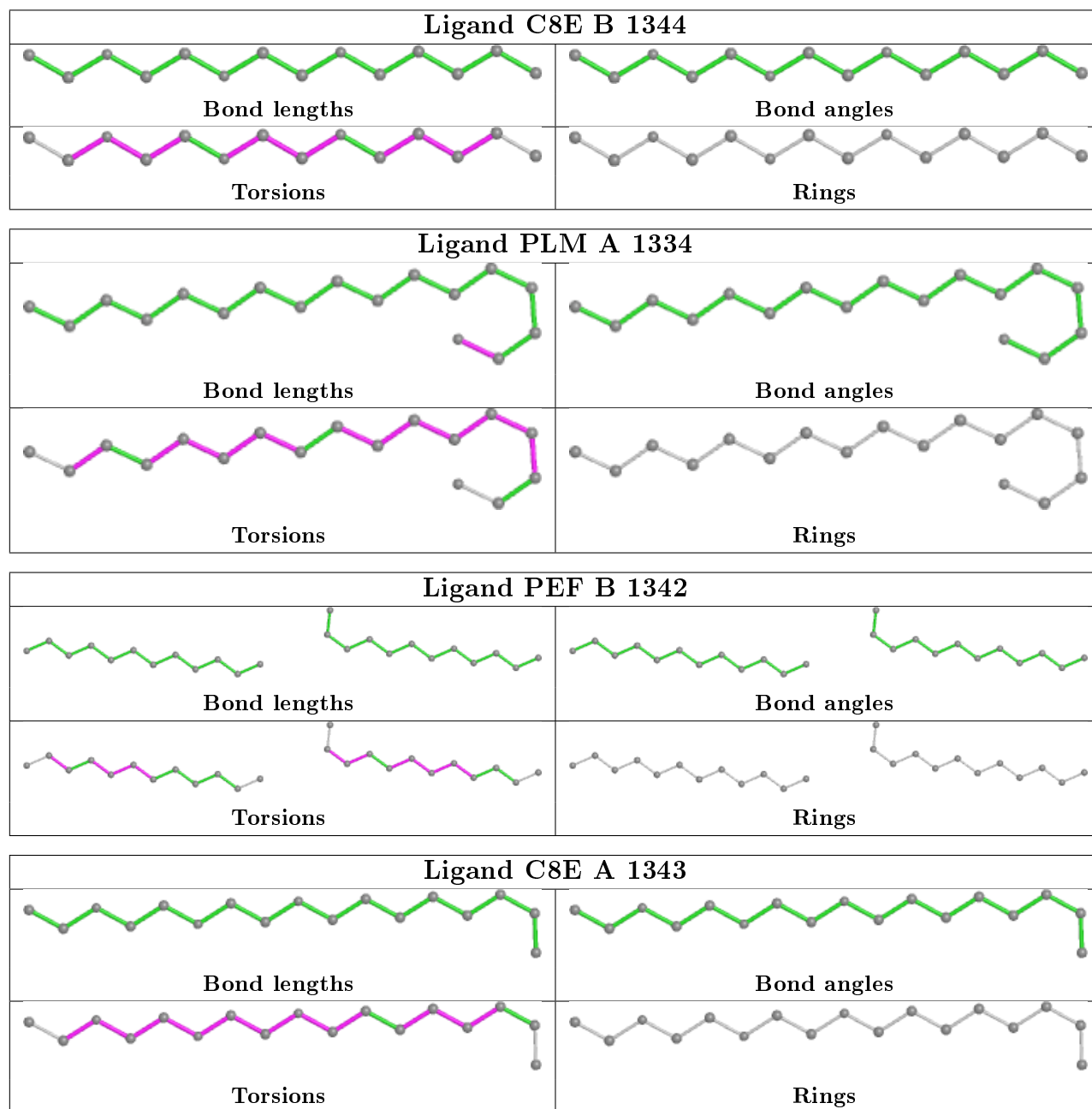
There are no ring outliers.

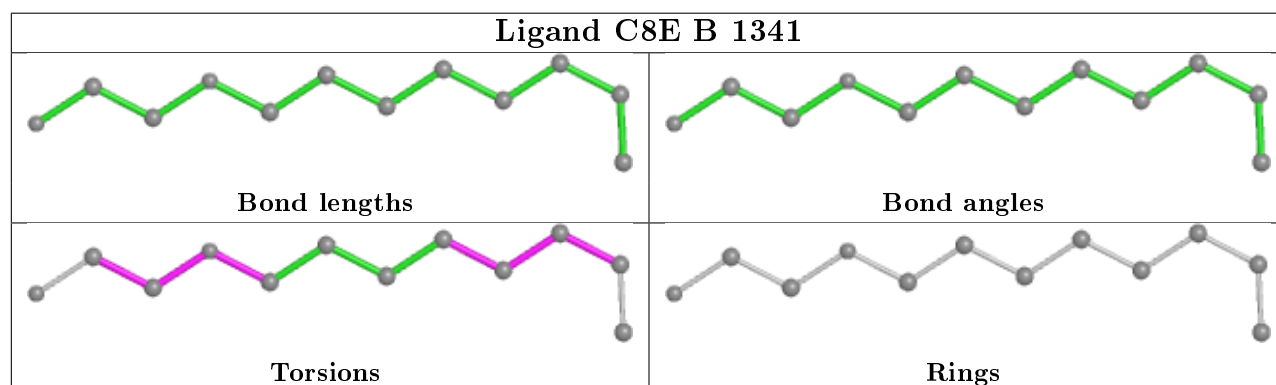
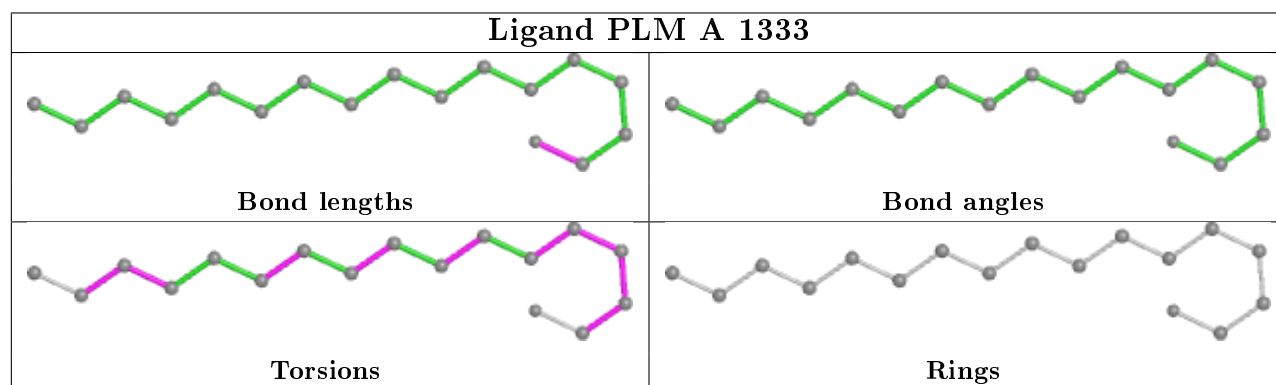
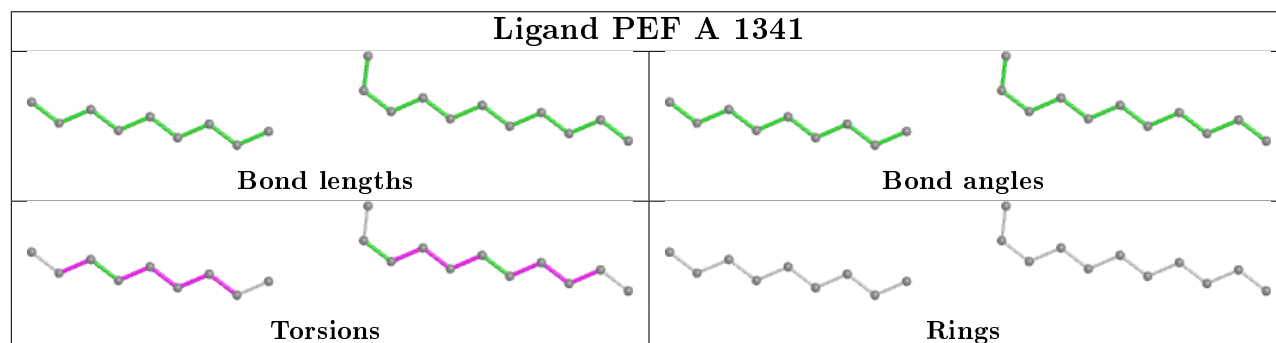
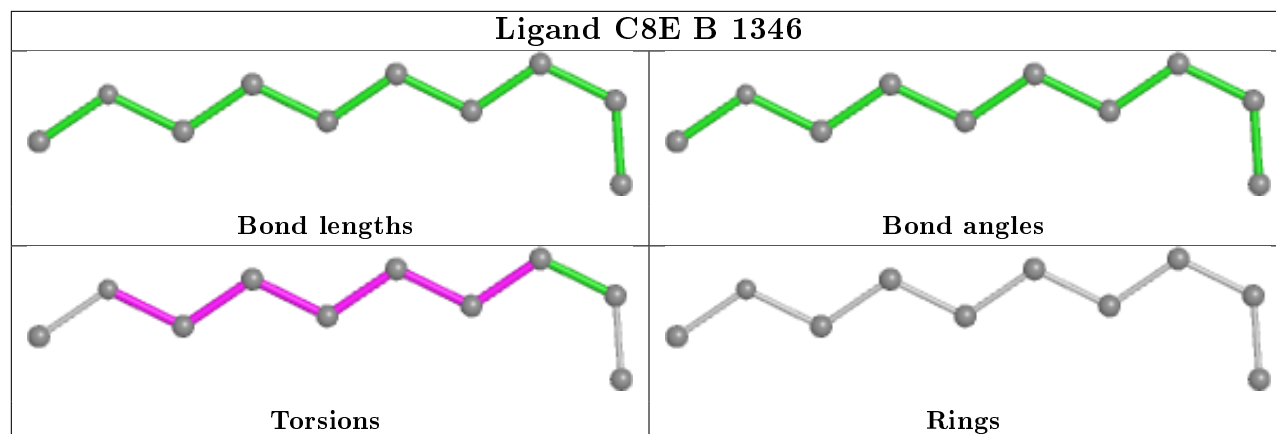
15 monomers are involved in 50 short contacts:

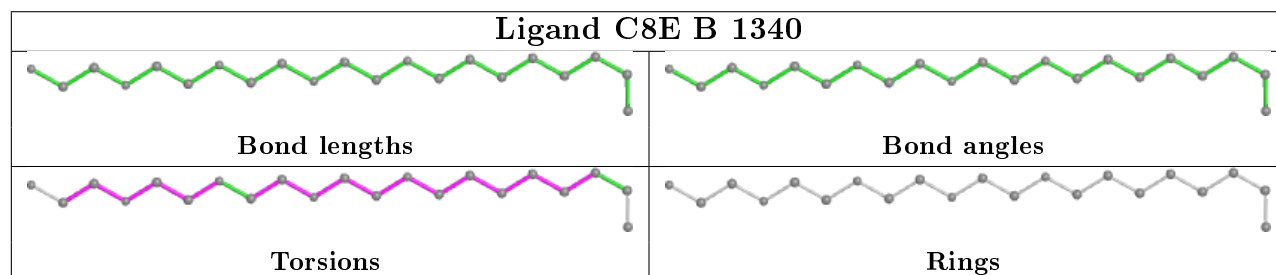
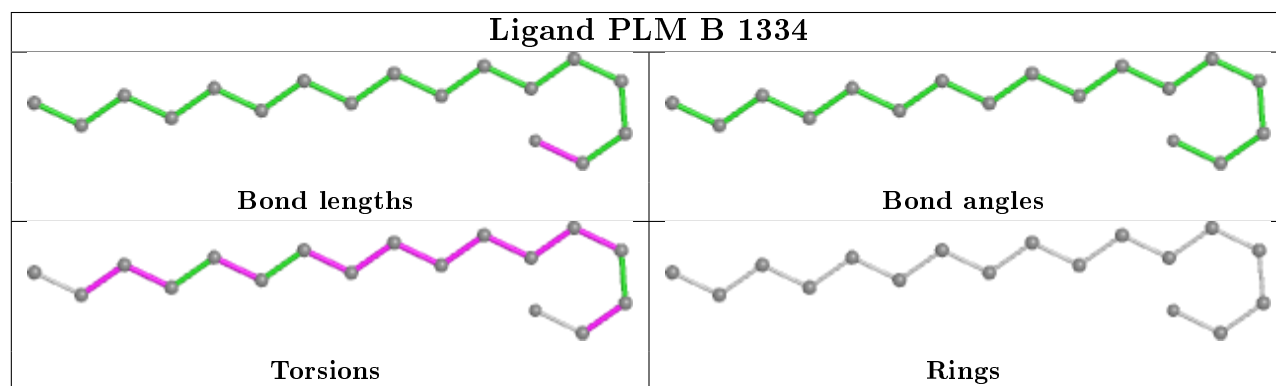
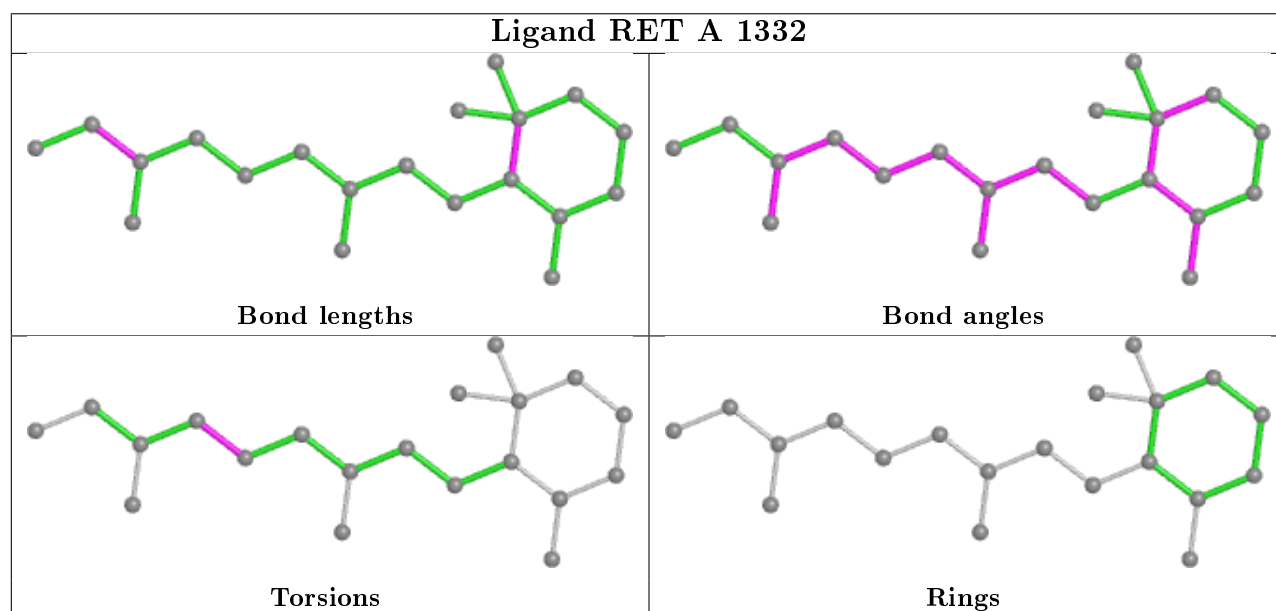
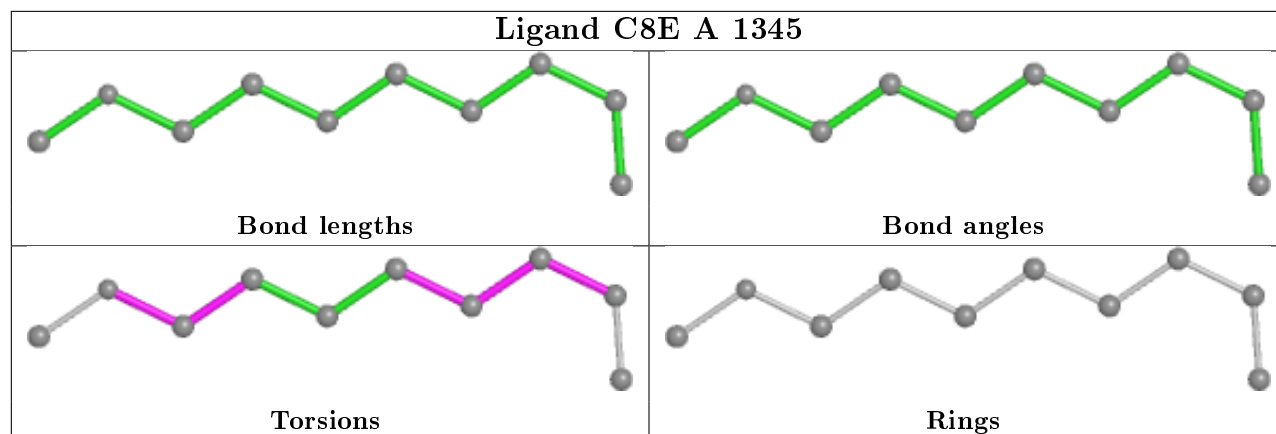
Mol	Chain	Res	Type	Clashes	Symm-Clashes
6	B	1348	LDA	23	0
7	B	1344	C8E	1	0
7	A	1343	C8E	2	0
4	A	1333	PLM	2	0
6	B	1343	LDA	21	0
7	A	1345	C8E	1	0
3	A	1332	RET	1	0
4	B	1334	PLM	1	0
7	B	1340	C8E	3	0
7	A	1346	C8E	1	0
7	A	1344	C8E	2	0
7	B	1345	C8E	5	0
3	B	1332	RET	1	0
4	B	1333	PLM	1	0
6	A	1342	LDA	3	0

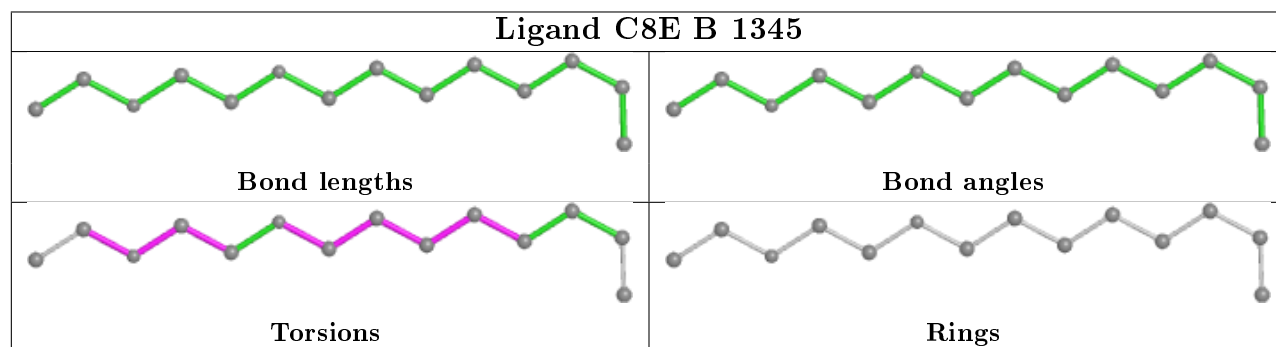
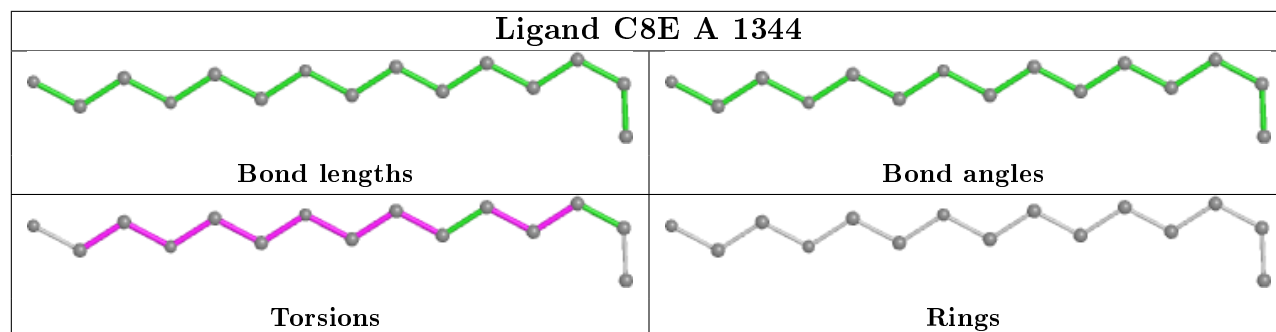
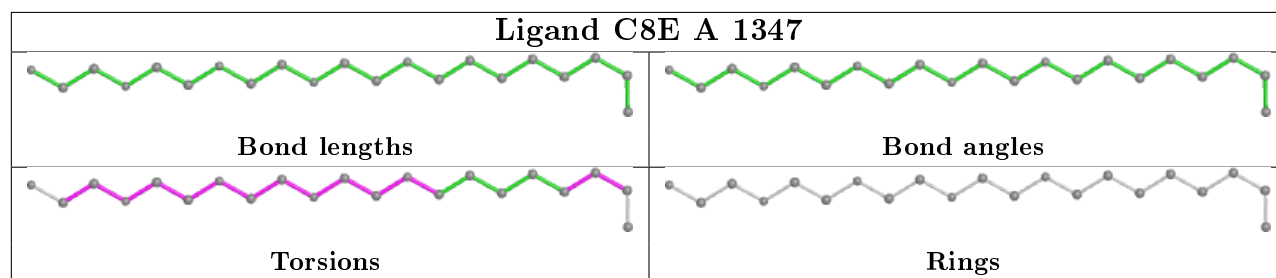
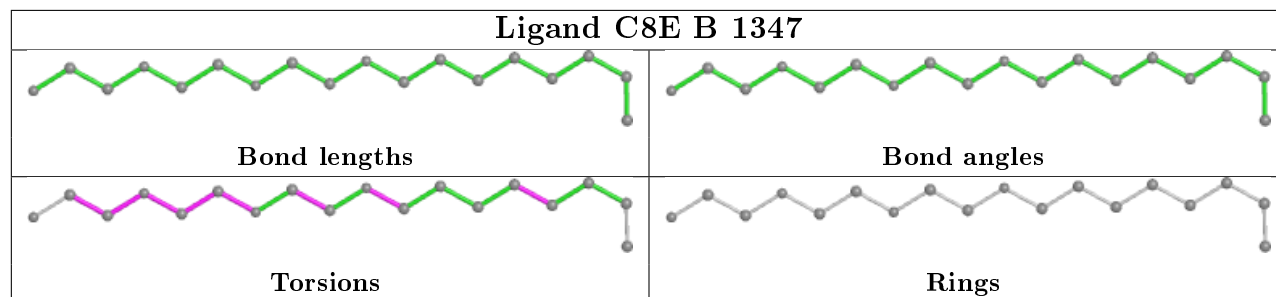
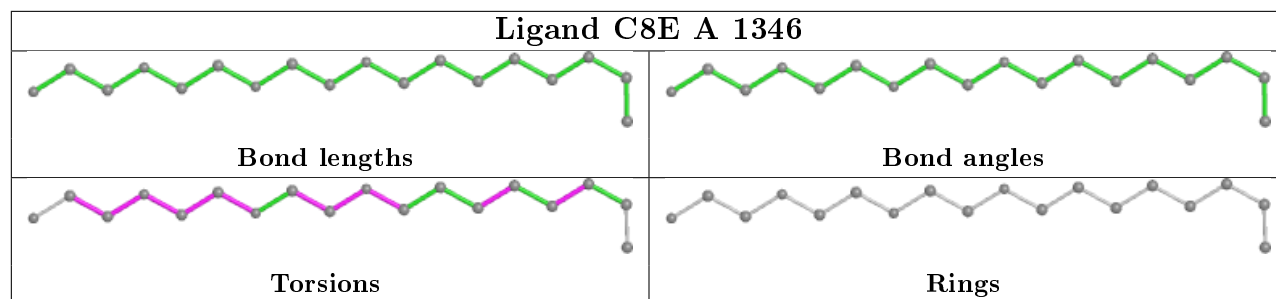
The following is a two-dimensional graphical depiction of Mogul quality analysis of bond lengths, bond angles, torsion angles, and ring geometry for all instances of the Ligand of Interest. In addition, ligands with molecular weight > 250 and outliers as shown on the validation Tables will also be included. For torsion angles, if less than 5% of the Mogul distribution of torsion angles is within 10 degrees of the torsion angle in question, then that torsion angle is considered an outlier. Any bond that is central to one or more torsion angles identified as an outlier by Mogul will be highlighted in the graph. For rings, the root-mean-square deviation (RMSD) between the ring in question and similar rings identified by Mogul is calculated over all ring torsion angles. If the

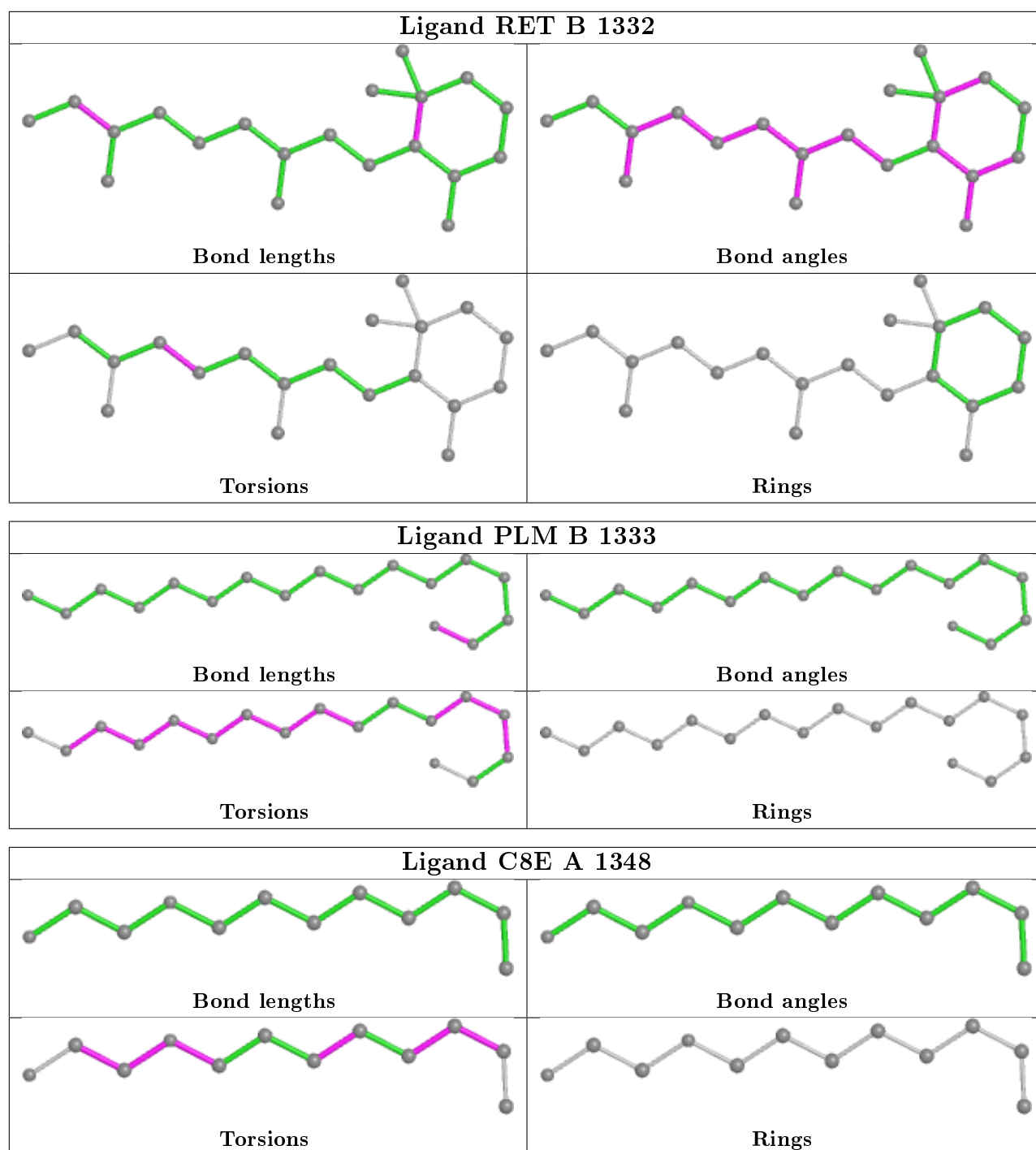
average RMSD is greater than 60 degrees and the minimal RMSD between the ring in question and any Mogul-identified rings is also greater than 60 degrees, then that ring is considered an outlier. The outliers are highlighted in purple. The color gray indicates Mogul did not find sufficient equivalents in the CSD to analyse the geometry.











5.7 Other polymers [i](#)

There are no such residues in this entry.

5.8 Polymer linkage issues [i](#)

There are no chain breaks in this entry.

6 Fit of model and data [i](#)

6.1 Protein, DNA and RNA chains [i](#)

In the following table, the column labelled ‘#RSRZ> 2’ contains the number (and percentage) of RSRZ outliers, followed by percent RSRZ outliers for the chain as percentile scores relative to all X-ray entries and entries of similar resolution. The OWAB column contains the minimum, median, 95th percentile and maximum values of the occupancy-weighted average B-factor per residue. The column labelled ‘Q< 0.9’ lists the number of (and percentage) of residues with an average occupancy less than 0.9.

Mol	Chain	Analysed	<RSRZ>	#RSRZ>2	OWAB(Å ²)	Q<0.9
1	A	329/349 (94%)	-0.14	11 (3%) 46 43	29, 45, 115, 173	0
1	B	329/349 (94%)	-0.22	7 (2%) 63 59	30, 45, 116, 174	0
All	All	658/698 (94%)	-0.18	18 (2%) 54 50	29, 45, 116, 174	0

The worst 5 of 18 RSRZ outliers are listed below:

Mol	Chain	Res	Type	RSRZ
1	A	233	ALA	10.7
1	A	238	GLN	9.2
1	A	234	ALA	8.9
1	A	235	ALA	8.8
1	B	236	GLN	6.7

6.2 Non-standard residues in protein, DNA, RNA chains [i](#)

There are no non-standard protein/DNA/RNA residues in this entry.

6.3 Carbohydrates [i](#)

In the following table, the Atoms column lists the number of modelled atoms in the group and the number defined in the chemical component dictionary. The B-factors column lists the minimum, median, 95th percentile and maximum values of B factors of atoms in the group. The column labelled ‘Q< 0.9’ lists the number of atoms with occupancy less than 0.9.

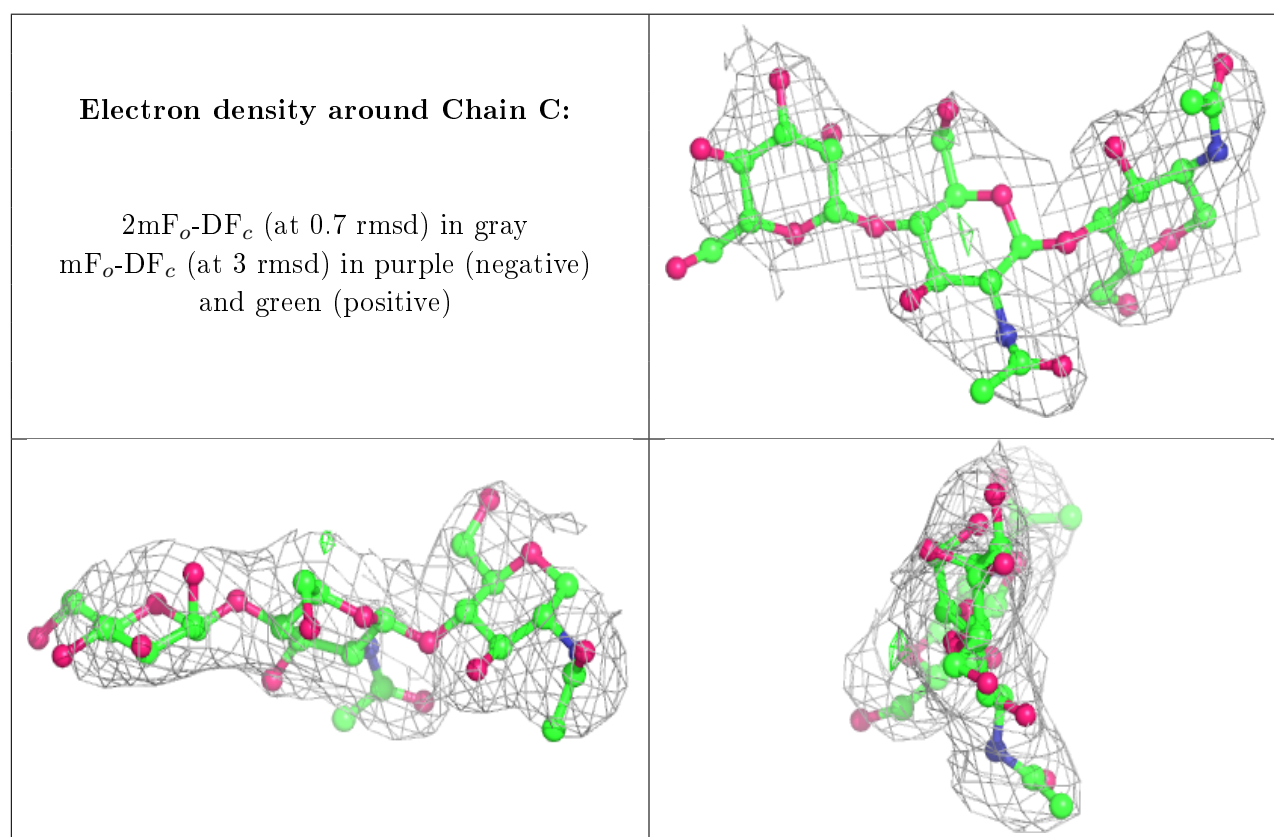
Mol	Type	Chain	Res	Atoms	RSCC	RSR	B-factors(Å ²)	Q<0.9
2	NAG	D	2	14/15	0.80	0.18	100,107,110,112	0
2	BMA	F	3	11/12	0.82	0.16	109,110,111,112	0
2	BMA	D	3	11/12	0.85	0.12	114,114,114,115	0
2	NAG	C	2	14/15	0.88	0.13	100,107,109,113	0
2	NAG	F	1	14/15	0.88	0.20	68,73,77,87	0

Continued on next page...

Continued from previous page...

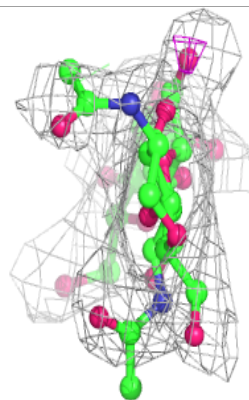
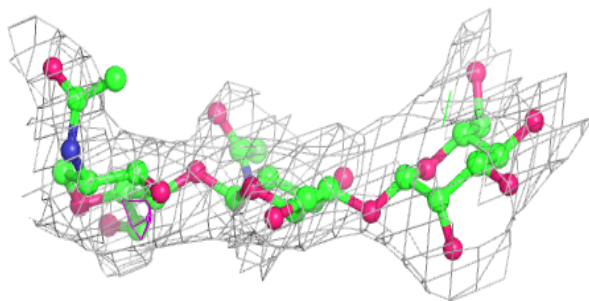
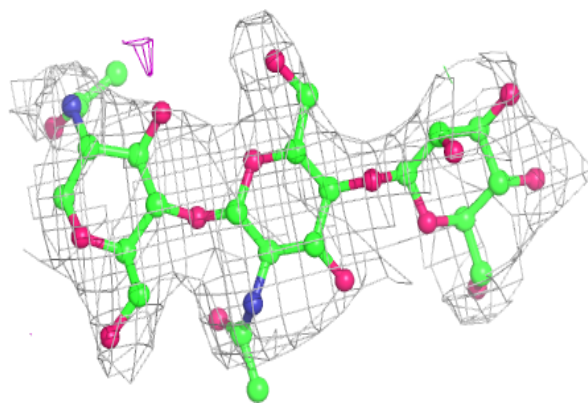
Mol	Type	Chain	Res	Atoms	RSCC	RSR	B-factors(\AA^2)	Q<0.9
2	NAG	E	2	14/15	0.89	0.13	105,112,114,115	0
2	BMA	E	3	11/12	0.89	0.16	116,117,118,118	0
2	NAG	D	1	14/15	0.90	0.18	72,77,81,91	0
2	BMA	C	3	11/12	0.90	0.15	117,119,120,120	0
2	NAG	F	2	14/15	0.91	0.18	97,105,108,109	0
2	NAG	C	1	14/15	0.96	0.10	74,82,86,92	0
2	NAG	E	1	14/15	0.97	0.10	72,80,90,97	0

The following is a graphical depiction of the model fit to experimental electron density for oligosaccharide. Each fit is shown from different orientation to approximate a three-dimensional view.

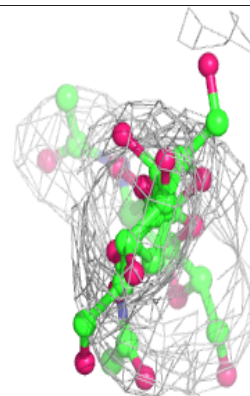
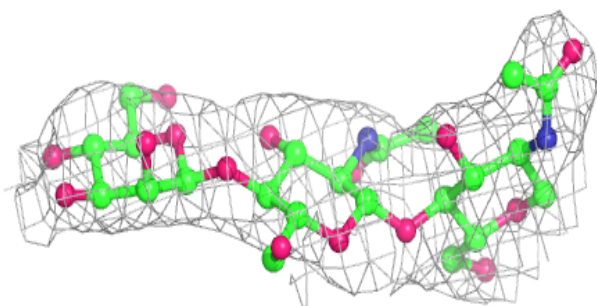
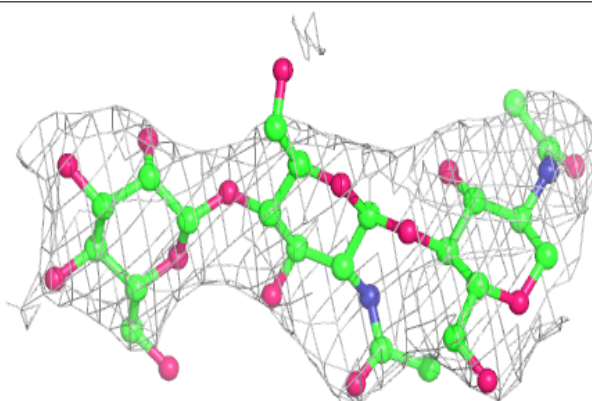


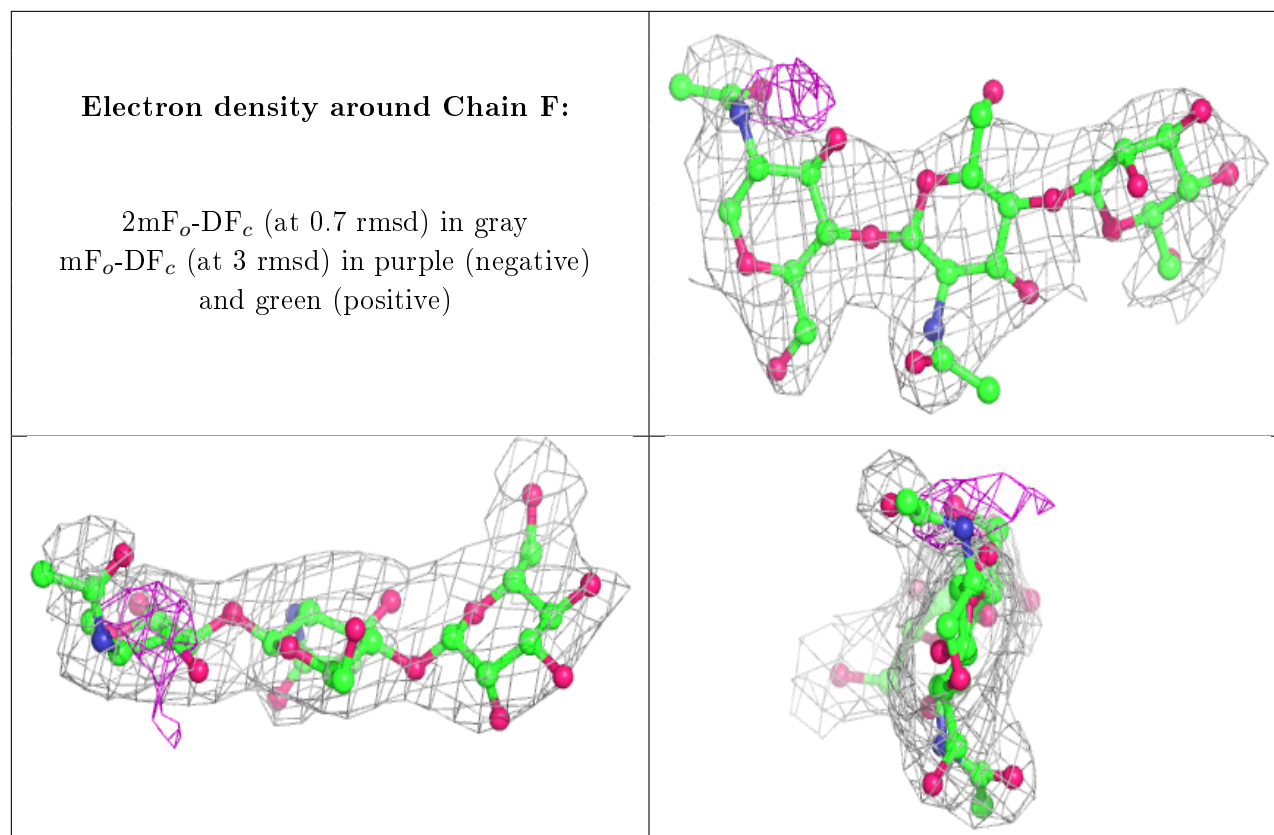
Electron density around Chain D:

$2mF_o-DF_c$ (at 0.7 rmsd) in gray
 mF_o-DF_c (at 3 rmsd) in purple (negative)
and green (positive)

**Electron density around Chain E:**

$2mF_o-DF_c$ (at 0.7 rmsd) in gray
 mF_o-DF_c (at 3 rmsd) in purple (negative)
and green (positive)





6.4 Ligands ⓘ

In the following table, the Atoms column lists the number of modelled atoms in the group and the number defined in the chemical component dictionary. The B-factors column lists the minimum, median, 95th percentile and maximum values of B factors of atoms in the group. The column labelled 'Q< 0.9' lists the number of atoms with occupancy less than 0.9.

Mol	Type	Chain	Res	Atoms	RSCC	RSR	B-factors(\AA^2)	Q<0.9
7	C8E	B	1340	21/21	0.49	0.64	103,114,119,119	0
7	C8E	A	1348	12/21	0.56	0.61	79,83,85,86	0
7	C8E	A	1347	21/21	0.69	0.40	92,96,103,104	0
7	C8E	B	1347	18/21	0.70	0.52	66,85,94,95	0
7	C8E	A	1346	18/21	0.73	0.32	60,80,92,92	0
7	C8E	B	1341	12/21	0.76	0.58	84,90,96,97	0
7	C8E	B	1346	10/21	0.78	0.51	56,69,81,81	0
4	PLM	B	1334	17/18	0.83	0.35	73,78,85,86	0
7	C8E	B	1344	14/21	0.88	0.26	69,75,78,79	0
4	PLM	A	1334	17/18	0.88	0.53	79,83,88,89	0
5	PEF	B	1342	24/47	0.88	0.29	42,59,67,68	0
7	C8E	A	1343	17/21	0.88	0.29	64,68,73,73	0
7	C8E	A	1345	10/21	0.89	0.33	51,63,75,75	0
7	C8E	B	1345	14/21	0.90	0.28	45,59,69,71	0

Continued on next page...

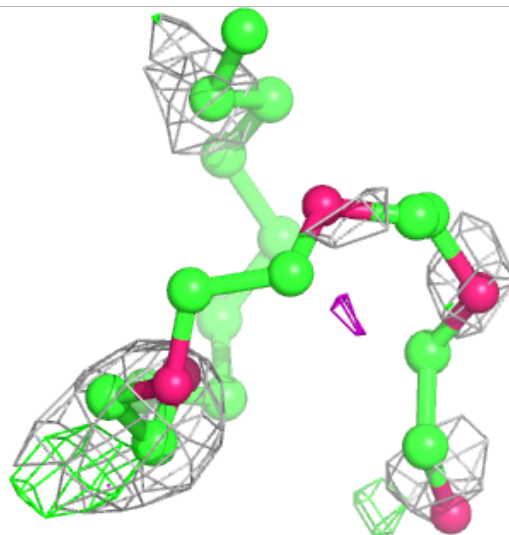
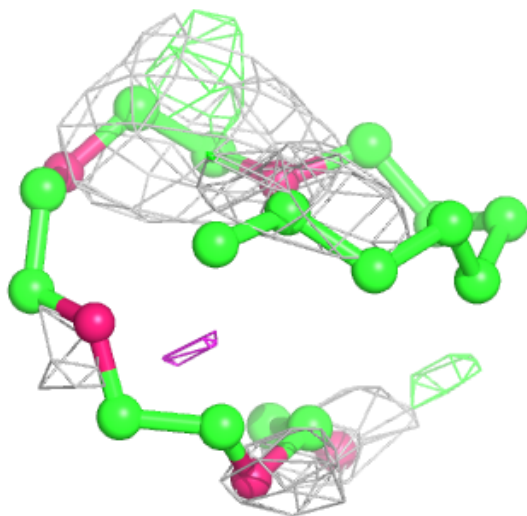
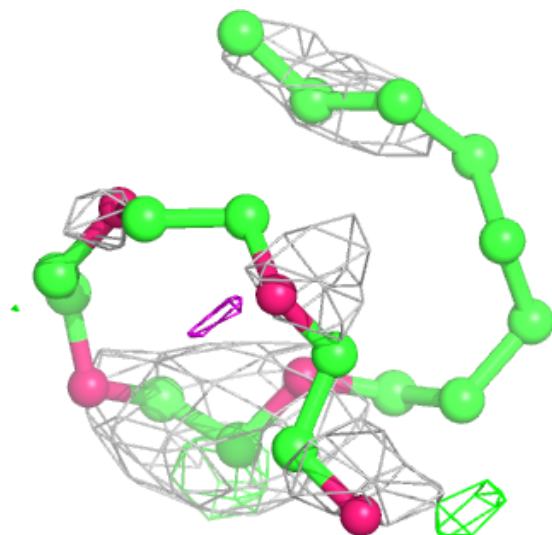
Continued from previous page...

Mol	Type	Chain	Res	Atoms	RSCC	RSR	B-factors(\AA^2)	Q<0.9
6	LDA	B	1348	16/16	0.90	0.23	26,30,34,35	16
6	LDA	A	1342	16/16	0.90	0.19	37,52,66,67	0
7	C8E	A	1344	15/21	0.91	0.19	55,61,70,71	0
5	PEF	A	1341	20/47	0.91	0.32	38,52,73,74	0
4	PLM	B	1333	17/18	0.92	0.64	53,59,76,78	0
6	LDA	B	1343	16/16	0.92	0.26	23,26,31,33	16
4	PLM	A	1333	17/18	0.92	0.47	52,56,76,78	0
8	ZN	B	1349	1/1	0.95	0.16	75,75,75,75	1
3	RET	A	1332	20/21	0.96	0.19	30,38,43,45	0
8	ZN	A	1349	1/1	0.97	0.12	76,76,76,76	1
3	RET	B	1332	20/21	0.97	0.18	28,36,43,43	0

The following is a graphical depiction of the model fit to experimental electron density of all instances of the Ligand of Interest. In addition, ligands with molecular weight > 250 and outliers as shown on the geometry validation Tables will also be included. Each fit is shown from different orientation to approximate a three-dimensional view.

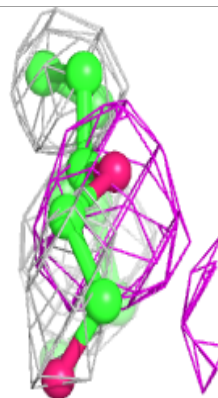
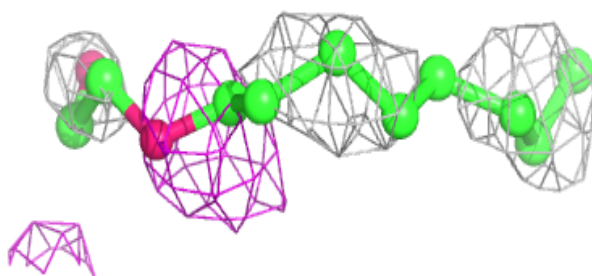
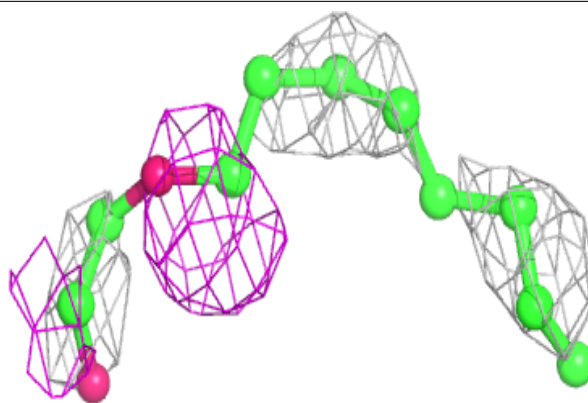
Electron density around C8E B 1340:

$2mF_o-DF_c$ (at 0.7 rmsd) in gray
 mF_o-DF_c (at 3 rmsd) in purple (negative)
and green (positive)

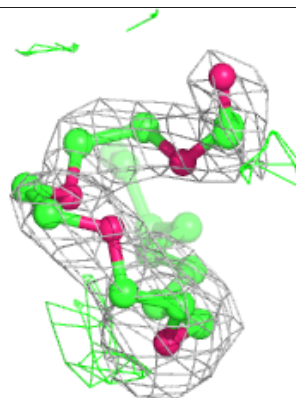
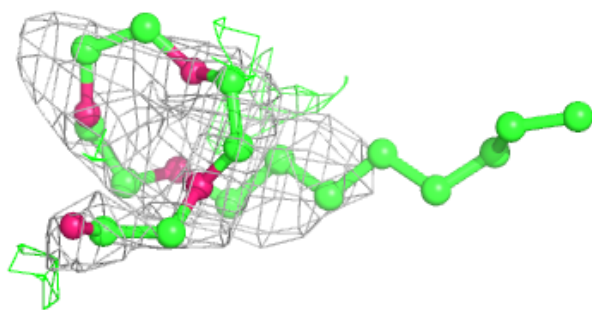
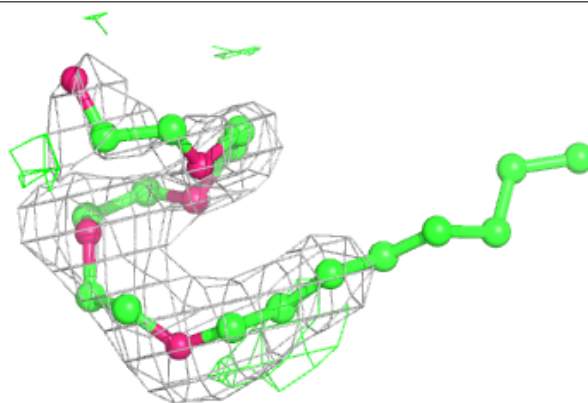


Electron density around C8E A 1348:

$2mF_o-DF_c$ (at 0.7 rmsd) in gray
 mF_o-DF_c (at 3 rmsd) in purple (negative)
and green (positive)

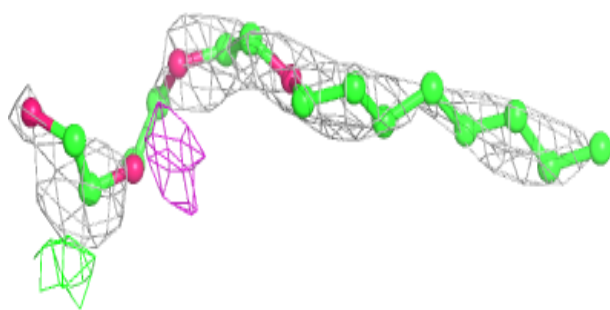
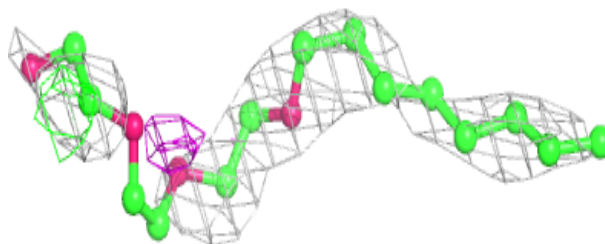
**Electron density around C8E A 1347:**

$2mF_o-DF_c$ (at 0.7 rmsd) in gray
 mF_o-DF_c (at 3 rmsd) in purple (negative)
and green (positive)

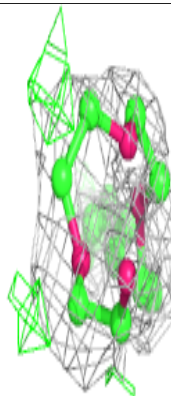
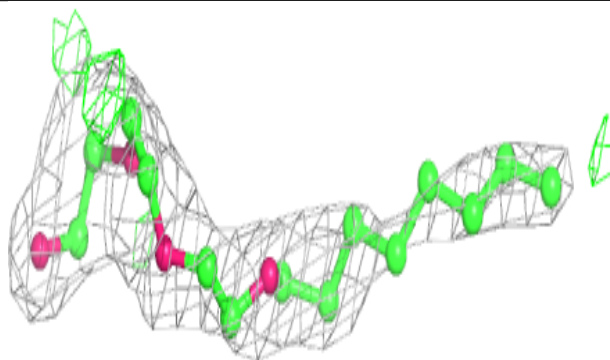
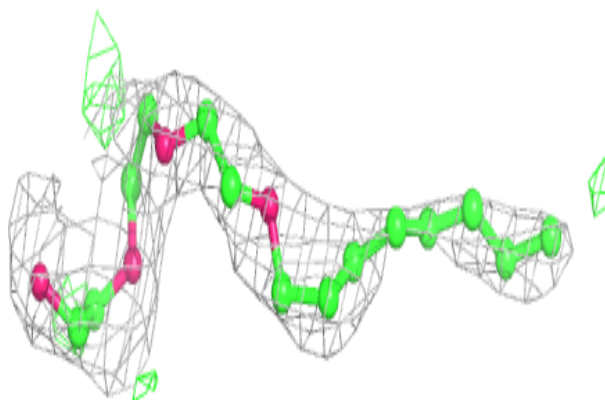


Electron density around C8E B 1347:

$2mF_o-DF_c$ (at 0.7 rmsd) in gray
 mF_o-DF_c (at 3 rmsd) in purple (negative)
and green (positive)

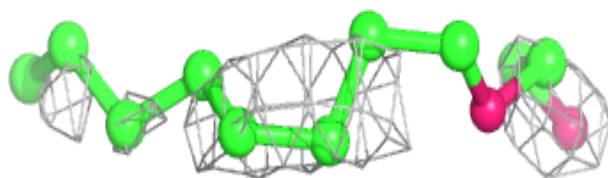
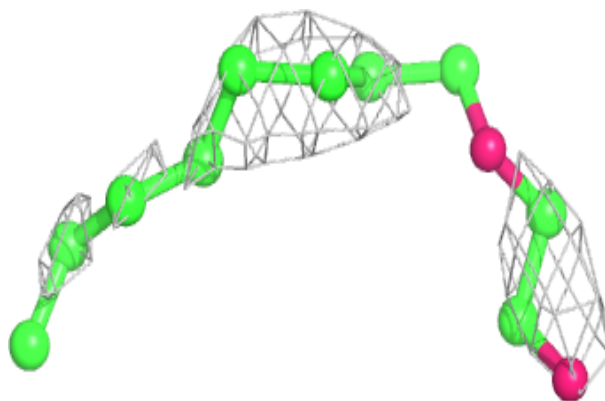
**Electron density around C8E A 1346:**

$2mF_o-DF_c$ (at 0.7 rmsd) in gray
 mF_o-DF_c (at 3 rmsd) in purple (negative)
and green (positive)

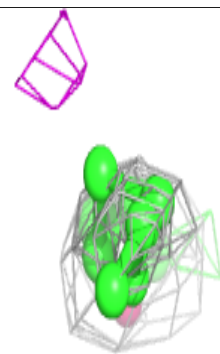
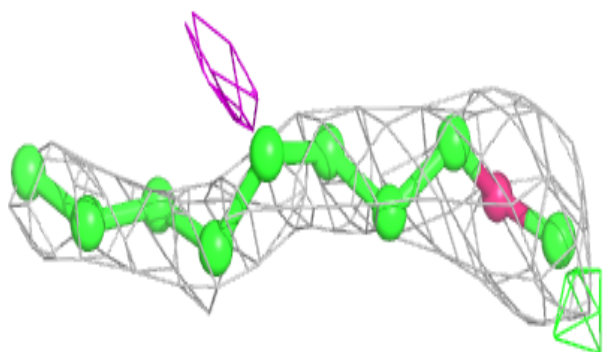
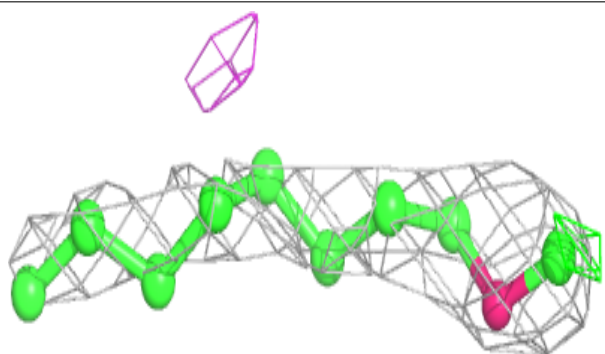


Electron density around C8E B 1341:

$2mF_o-DF_c$ (at 0.7 rmsd) in gray
 mF_o-DF_c (at 3 rmsd) in purple (negative)
and green (positive)

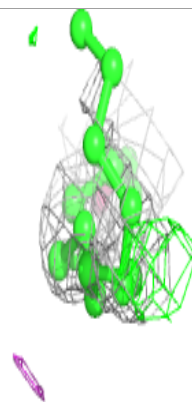
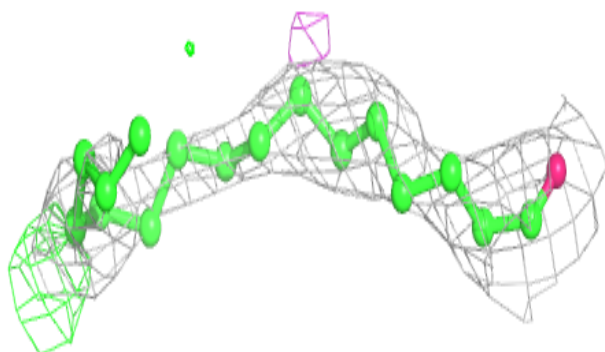
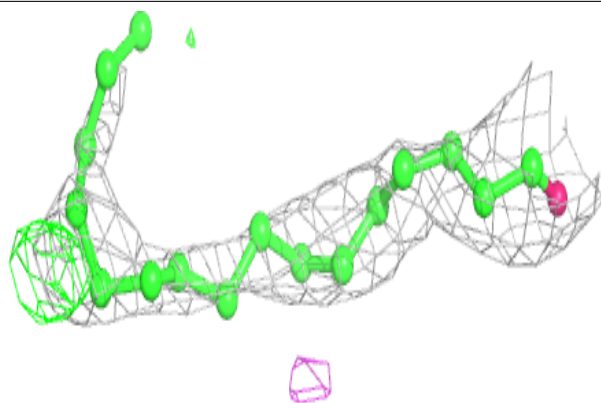
**Electron density around C8E B 1346:**

$2mF_o-DF_c$ (at 0.7 rmsd) in gray
 mF_o-DF_c (at 3 rmsd) in purple (negative)
and green (positive)

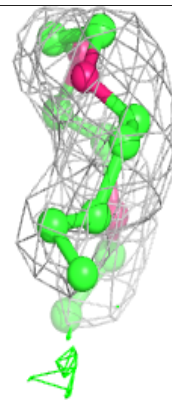
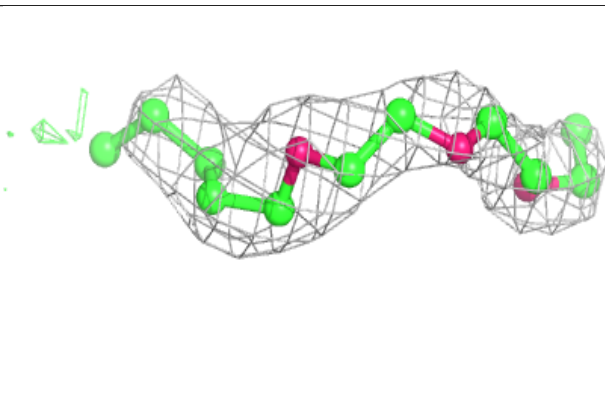
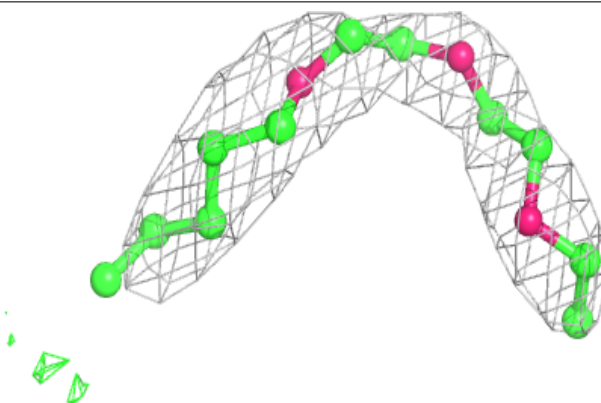


Electron density around PLM B 1334:

$2mF_o-DF_c$ (at 0.7 rmsd) in gray
 mF_o-DF_c (at 3 rmsd) in purple (negative)
and green (positive)

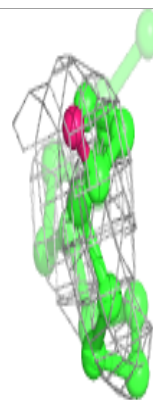
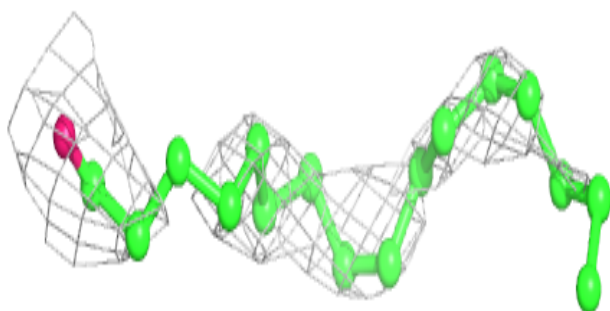
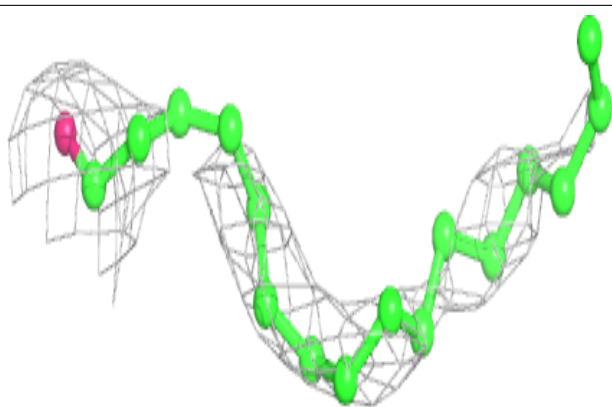
**Electron density around C8E B 1344:**

$2mF_o-DF_c$ (at 0.7 rmsd) in gray
 mF_o-DF_c (at 3 rmsd) in purple (negative)
and green (positive)

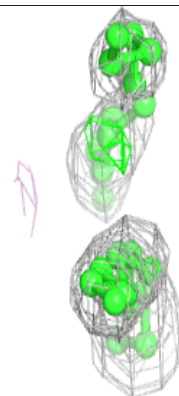
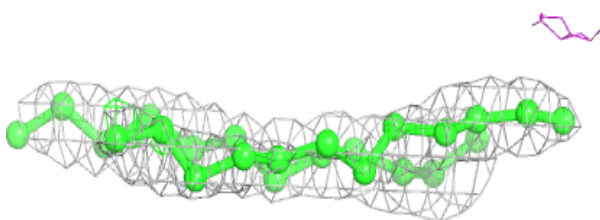
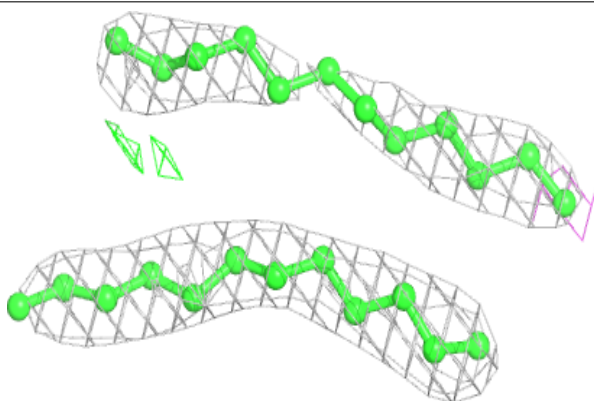


Electron density around PLM A 1334:

$2mF_o-DF_c$ (at 0.7 rmsd) in gray
 mF_o-DF_c (at 3 rmsd) in purple (negative)
and green (positive)

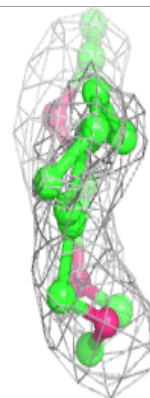
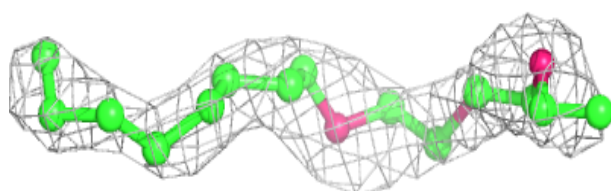
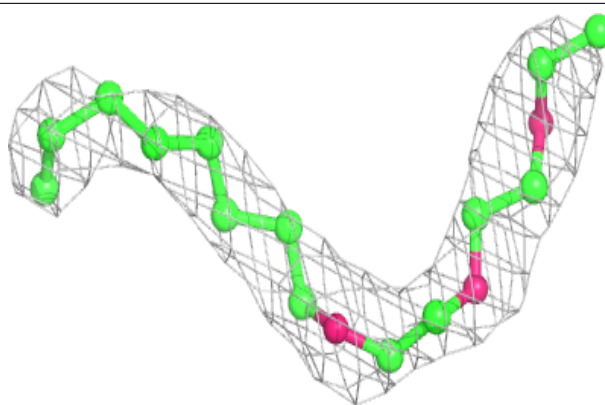
**Electron density around PEF B 1342:**

$2mF_o-DF_c$ (at 0.7 rmsd) in gray
 mF_o-DF_c (at 3 rmsd) in purple (negative)
and green (positive)

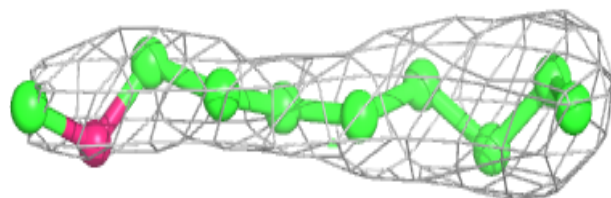
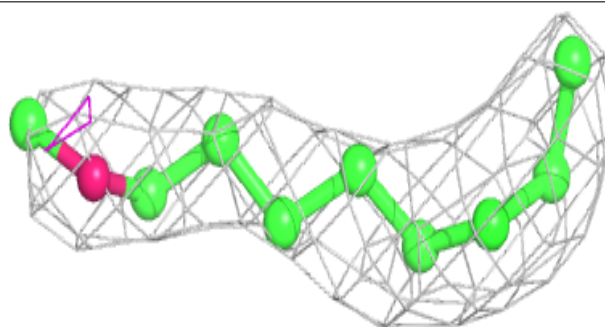


Electron density around C8E A 1343:

$2mF_o-DF_c$ (at 0.7 rmsd) in gray
 mF_o-DF_c (at 3 rmsd) in purple (negative)
and green (positive)

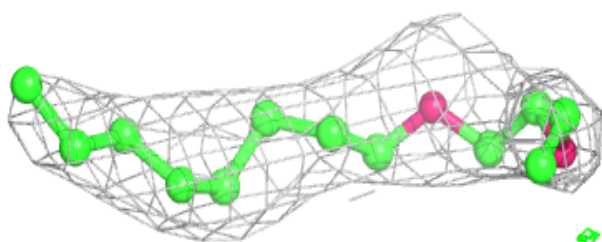
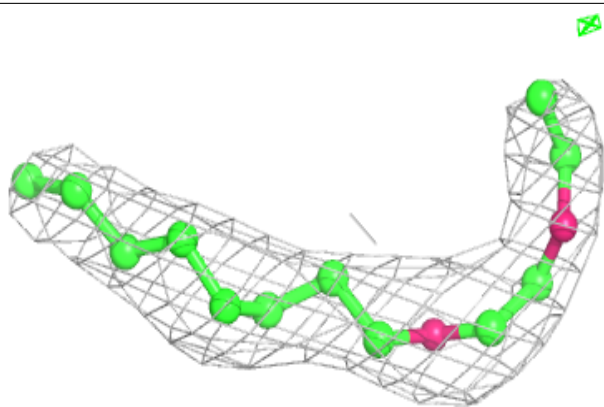
**Electron density around C8E A 1345:**

$2mF_o-DF_c$ (at 0.7 rmsd) in gray
 mF_o-DF_c (at 3 rmsd) in purple (negative)
and green (positive)

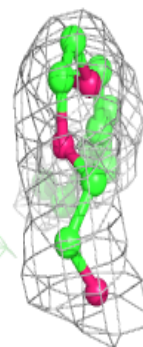
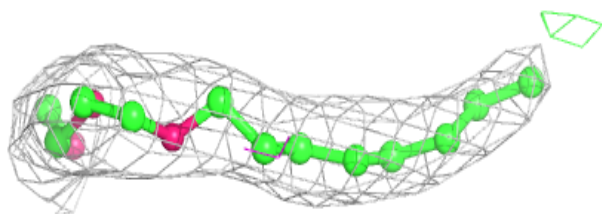
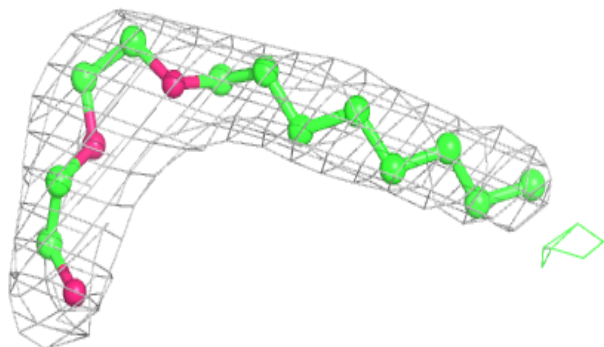


Electron density around C8E B 1345:

$2mF_o-DF_c$ (at 0.7 rmsd) in gray
 mF_o-DF_c (at 3 rmsd) in purple (negative)
and green (positive)

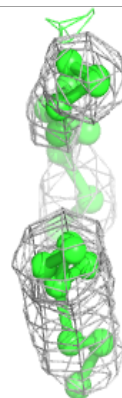
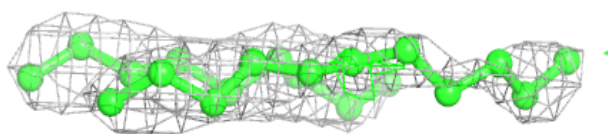
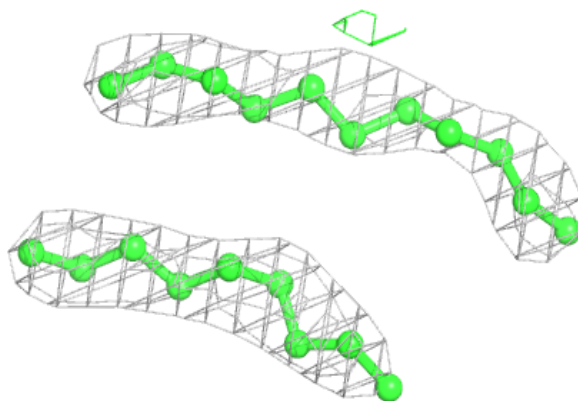
**Electron density around C8E A 1344:**

$2mF_o-DF_c$ (at 0.7 rmsd) in gray
 mF_o-DF_c (at 3 rmsd) in purple (negative)
and green (positive)

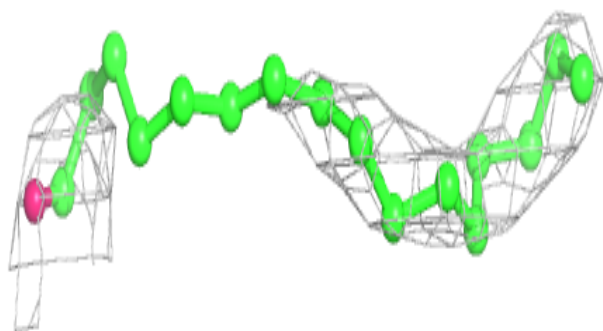
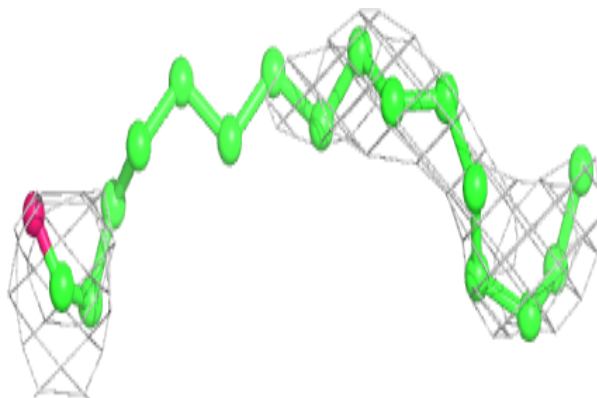


Electron density around PEF A 1341:

$2mF_o-DF_c$ (at 0.7 rmsd) in gray
 mF_o-DF_c (at 3 rmsd) in purple (negative)
and green (positive)

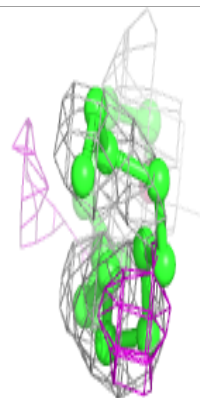
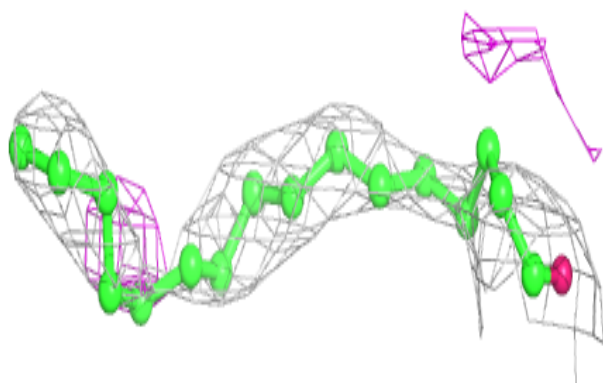
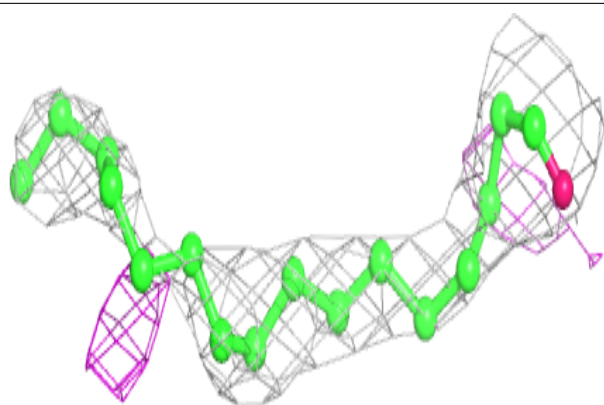
**Electron density around PLM B 1333:**

$2mF_o-DF_c$ (at 0.7 rmsd) in gray
 mF_o-DF_c (at 3 rmsd) in purple (negative)
and green (positive)

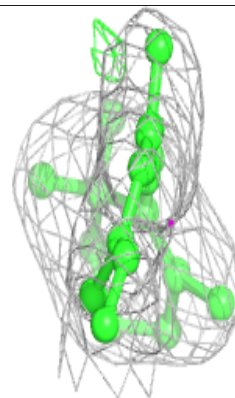
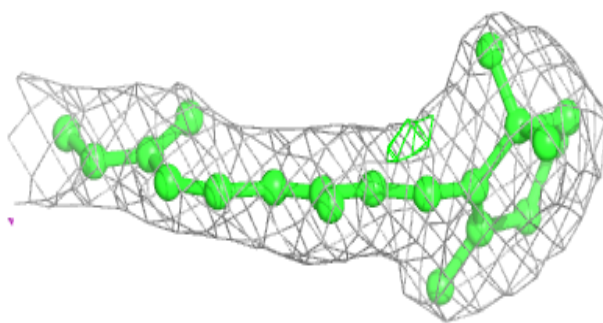
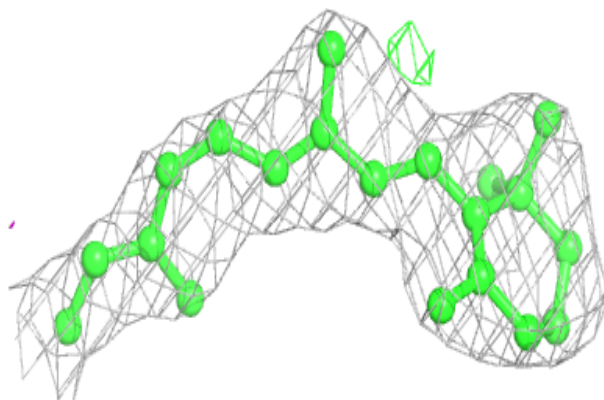


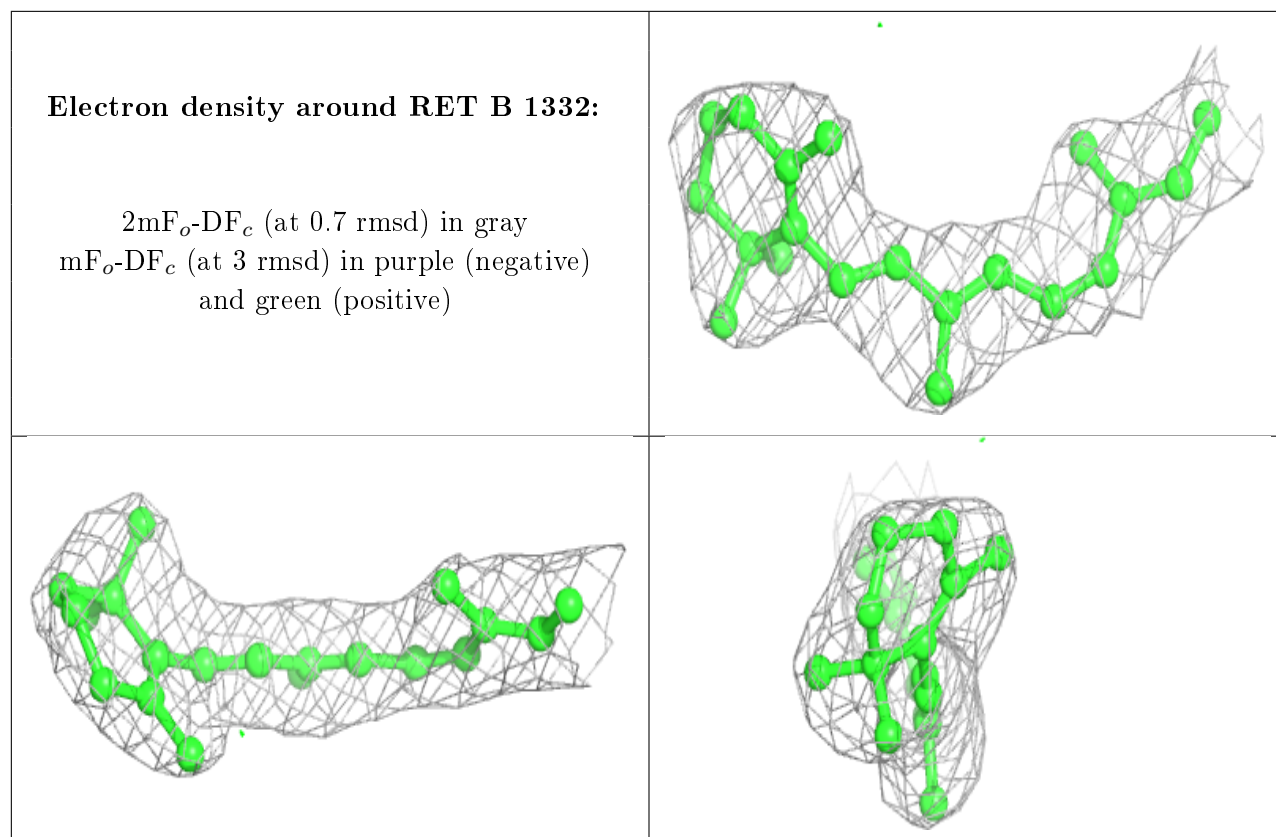
Electron density around PLM A 1333:

$2mF_o-DF_c$ (at 0.7 rmsd) in gray
 mF_o-DF_c (at 3 rmsd) in purple (negative)
and green (positive)

**Electron density around RET A 1332:**

$2mF_o-DF_c$ (at 0.7 rmsd) in gray
 mF_o-DF_c (at 3 rmsd) in purple (negative)
and green (positive)





6.5 Other polymers [i](#)

There are no such residues in this entry.