



# Full wwPDB X-ray Structure Validation Report ⓘ

May 14, 2020 – 08:01 am BST

PDB ID : 3GZ2  
Title : Crystal structure of IpgC in complex with an IpaB peptide  
Authors : Lokareddy, R.K.; Lunelli, M.; Kolbe, M.  
Deposited on : 2009-04-06  
Resolution : 2.65 Å(reported)

This is a Full wwPDB X-ray Structure Validation Report for a publicly released PDB entry.

We welcome your comments at [validation@mail.wwpdb.org](mailto:validation@mail.wwpdb.org)

A user guide is available at

<https://www.wwpdb.org/validation/2017/XrayValidationReportHelp>

with specific help available everywhere you see the ⓘ symbol.

---

The following versions of software and data (see [references ⓘ](#)) were used in the production of this report:

MolProbity : 4.02b-467  
Mogul : 1.8.5 (274361), CSD as541be (2020)  
Xtriage (Phenix) : 1.13  
EDS : 2.11  
Percentile statistics : 20191225.v01 (using entries in the PDB archive December 25th 2019)  
Refmac : 5.8.0158  
CCP4 : 7.0.044 (Gargrove)  
Ideal geometry (proteins) : Engh & Huber (2001)  
Ideal geometry (DNA, RNA) : Parkinson et al. (1996)  
Validation Pipeline (wwPDB-VP) : 2.11

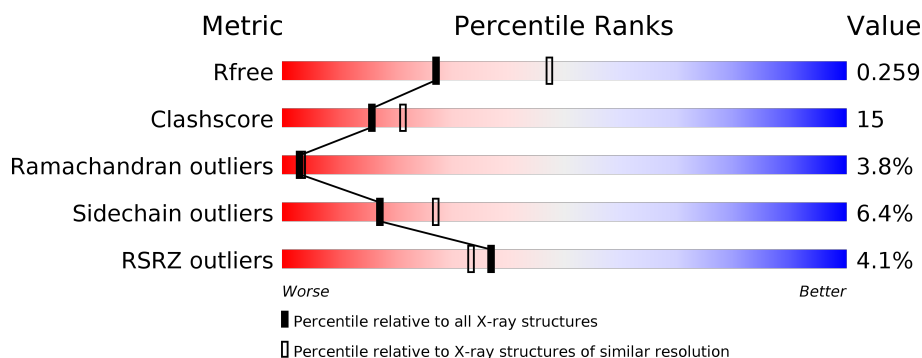
# 1 Overall quality at a glance

The following experimental techniques were used to determine the structure:

## *X-RAY DIFFRACTION*

The reported resolution of this entry is 2.65 Å.

Percentile scores (ranging between 0-100) for global validation metrics of the entry are shown in the following graphic. The table shows the number of entries on which the scores are based.



Metric	Whole archive (#Entries)	Similar resolution (#Entries, resolution range(Å))
$R_{free}$	130704	1332 (2.68-2.64)
Clashscore	141614	1374 (2.68-2.64)
Ramachandran outliers	138981	1349 (2.68-2.64)
Sidechain outliers	138945	1349 (2.68-2.64)
RSRZ outliers	127900	1318 (2.68-2.64)

The table below summarises the geometric issues observed across the polymeric chains and their fit to the electron density. The red, orange, yellow and green segments on the lower bar indicate the fraction of residues that contain outliers for  $\geq 3$ , 2, 1 and 0 types of geometric quality criteria respectively. A grey segment represents the fraction of residues that are not modelled. The numeric value for each fraction is indicated below the corresponding segment, with a dot representing fractions  $\leq 5\%$ . The upper red bar (where present) indicates the fraction of residues that have poor fit to the electron density. The numeric value is given above the bar.

Mol	Chain	Length	Quality of chain
1	A	151	<div> <div style="width: 100%; height: 10px; background-color: red;"></div> <div style="display: flex; justify-content: space-between; align-items: center;"> <div style="width: 65%; height: 10px; background-color: green;"></div> <div style="width: 28%; height: 10px; background-color: yellow;"></div> <div style="width: 5%; height: 10px; background-color: orange;"></div> </div> <div style="display: flex; justify-content: space-between; align-items: center;"> <span>65%</span> <span>28%</span> <span>• 5%</span> </div> </div>
1	B	151	<div> <div style="width: 5%; height: 10px; background-color: red;"></div> <div style="display: flex; justify-content: space-between; align-items: center;"> <div style="width: 57%; height: 10px; background-color: green;"></div> <div style="width: 32%; height: 10px; background-color: yellow;"></div> <div style="width: 5%; height: 10px; background-color: orange;"></div> </div> <div style="display: flex; justify-content: space-between; align-items: center;"> <span>57%</span> <span>32%</span> <span>5% • 5%</span> </div> </div>
2	P	78	<div> <div style="width: 4%; height: 10px; background-color: red;"></div> <div style="width: 4%; height: 10px; background-color: orange;"></div> <div style="width: 4%; height: 10px; background-color: yellow;"></div> <div style="width: 91%; height: 10px; background-color: grey;"></div> </div> <div style="display: flex; justify-content: space-between; align-items: center;"> <span>4%</span> <span>91%</span> </div>

The following table lists non-polymeric compounds, carbohydrate monomers and non-standard residues in protein, DNA, RNA chains that are outliers for geometric or electron-density-fit criteria:

Mol	Type	Chain	Res	Chirality	Geometry	Clashes	Electron density
3	GOL	A	153	-	-	-	X

## 2 Entry composition

There are 5 unique types of molecules in this entry. The entry contains 2398 atoms, of which 0 are hydrogens and 0 are deuteriums.

In the tables below, the ZeroOcc column contains the number of atoms modelled with zero occupancy, the AltConf column contains the number of residues with at least one atom in alternate conformation and the Trace column contains the number of residues modelled with at most 2 atoms.

- Molecule 1 is a protein called Chaperone protein ipgC.

Mol	Chain	Residues	Atoms					ZeroOcc	AltConf	Trace
1	A	144	Total	C	N	O	S	0	0	0
			1162	749	183	224	6			
1	B	143	Total	C	N	O	S	0	0	0
			1154	745	181	222	6			

There are 2 discrepancies between the modelled and reference sequences:

Chain	Residue	Modelled	Actual	Comment	Reference
A	1	GLY	MET	ENGINEERED MUTATION	UNP P0A2U4
B	1	GLY	MET	ENGINEERED MUTATION	UNP P0A2U4

- Molecule 2 is a protein called Invasin ipaB.

Mol	Chain	Residues	Atoms				ZeroOcc	AltConf	Trace
2	P	7	Total	C	N	O	0	0	0
			53	36	8	9			

There are 21 discrepancies between the modelled and reference sequences:

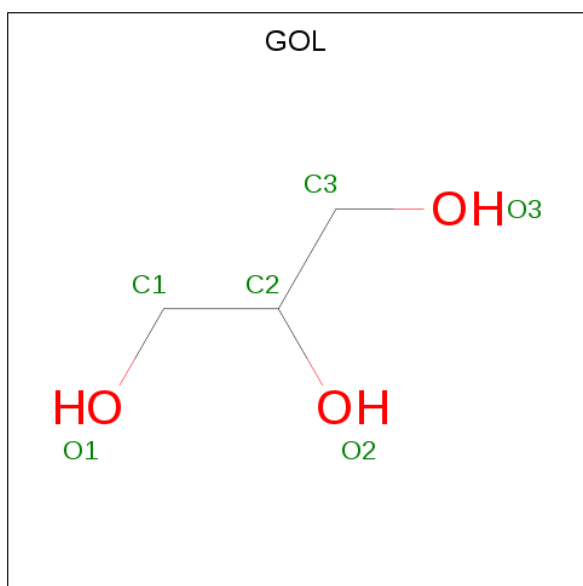
Chain	Residue	Modelled	Actual	Comment	Reference
P	-5	MET	-	EXPRESSION TAG	UNP P18011
P	-4	GLY	-	EXPRESSION TAG	UNP P18011
P	-3	SER	-	EXPRESSION TAG	UNP P18011
P	-2	SER	-	EXPRESSION TAG	UNP P18011
P	-1	HIS	-	EXPRESSION TAG	UNP P18011
P	0	HIS	-	EXPRESSION TAG	UNP P18011
P	1	HIS	-	EXPRESSION TAG	UNP P18011
P	2	HIS	-	EXPRESSION TAG	UNP P18011
P	3	HIS	-	EXPRESSION TAG	UNP P18011
P	4	HIS	-	EXPRESSION TAG	UNP P18011
P	5	SER	-	EXPRESSION TAG	UNP P18011
P	6	SER	-	EXPRESSION TAG	UNP P18011

*Continued on next page...*

Continued from previous page...

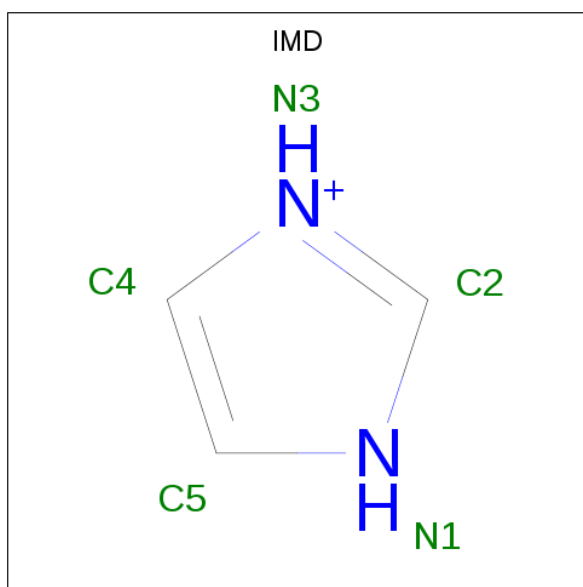
Chain	Residue	Modelled	Actual	Comment	Reference
P	7	GLY	-	EXPRESSION TAG	UNP P18011
P	8	LEU	-	EXPRESSION TAG	UNP P18011
P	9	VAL	-	EXPRESSION TAG	UNP P18011
P	10	PRO	-	EXPRESSION TAG	UNP P18011
P	11	ARG	-	EXPRESSION TAG	UNP P18011
P	12	GLY	-	EXPRESSION TAG	UNP P18011
P	13	SER	-	EXPRESSION TAG	UNP P18011
P	14	HIS	-	EXPRESSION TAG	UNP P18011
P	15	MET	-	EXPRESSION TAG	UNP P18011

- Molecule 3 is GLYCEROL (three-letter code: GOL) (formula:  $C_3H_8O_3$ ).



Mol	Chain	Residues	Atoms			ZeroOcc	AltConf
3	A	1	Total	C	O	0	0
			6	3	3		
3	A	1	Total	C	O	0	0
			6	3	3		

- Molecule 4 is IMIDAZOLE (three-letter code: IMD) (formula:  $C_3H_5N_2$ ).



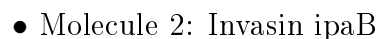
Mol	Chain	Residues	Atoms			ZeroOcc	AltConf
4	A	1	Total	C	N	0	0
			5	3	2		

- Molecule 5 is water.

Mol	Chain	Residues	Atoms		ZeroOcc	AltConf
5	A	5	Total	O	0	0
			5	5		
5	B	7	Total	O	0	0
			7	7		



- Molecule 1: Chaperone protein ipgC



## 4 Data and refinement statistics

Property	Value	Source
Space group	P 31 2 1	Depositor
Cell constants a, b, c, $\alpha$ , $\beta$ , $\gamma$	113.72Å 113.72Å 76.37Å 90.00° 90.00° 120.00°	Depositor
Resolution (Å)	35.60 – 2.65 35.60 – 2.65	Depositor EDS
% Data completeness (in resolution range)	92.7 (35.60-2.65) 92.7 (35.60-2.65)	Depositor EDS
$R_{merge}$	0.07	Depositor
$R_{sym}$	(Not available)	Depositor
$\langle I/\sigma(I) \rangle$ <sup>1</sup>	2.91 (at 2.65Å)	Xtriage
Refinement program	REFMAC 5.5.0072	Depositor
R, $R_{free}$	0.233 , 0.273 0.226 , 0.259	Depositor DCC
$R_{free}$ test set	782 reflections (5.00%)	wwPDB-VP
Wilson B-factor (Å <sup>2</sup> )	79.0	Xtriage
Anisotropy	0.299	Xtriage
Bulk solvent $k_{sol}$ (e/Å <sup>3</sup> ), $B_{sol}$ (Å <sup>2</sup> )	0.36 , 58.6	EDS
L-test for twinning <sup>2</sup>	$\langle  L  \rangle = 0.49$ , $\langle L^2 \rangle = 0.32$	Xtriage
Estimated twinning fraction	0.034 for -h,-k,l	Xtriage
$F_o, F_c$ correlation	0.95	EDS
Total number of atoms	2398	wwPDB-VP
Average B, all atoms (Å <sup>2</sup> )	79.0	wwPDB-VP

Xtriage's analysis on translational NCS is as follows: *The largest off-origin peak in the Patterson function is 4.50% of the height of the origin peak. No significant pseudotranslation is detected.*

<sup>1</sup>Intensities estimated from amplitudes.

<sup>2</sup>Theoretical values of  $\langle |L| \rangle$ ,  $\langle L^2 \rangle$  for acentric reflections are 0.5, 0.333 respectively for untwinned datasets, and 0.375, 0.2 for perfectly twinned datasets.

## 5 Model quality [i](#)

### 5.1 Standard geometry [i](#)

Bond lengths and bond angles in the following residue types are not validated in this section: GOL, IMD

The Z score for a bond length (or angle) is the number of standard deviations the observed value is removed from the expected value. A bond length (or angle) with  $|Z| > 5$  is considered an outlier worth inspection. RMSZ is the root-mean-square of all Z scores of the bond lengths (or angles).

Mol	Chain	Bond lengths		Bond angles	
		RMSZ	$\# Z  > 5$	RMSZ	$\# Z  > 5$
1	A	0.99	1/1186 (0.1%)	0.95	0/1602
1	B	1.05	1/1178 (0.1%)	0.93	1/1591 (0.1%)
2	P	0.95	0/54	0.78	0/73
All	All	1.02	2/2418 (0.1%)	0.94	1/3266 (0.0%)

All (2) bond length outliers are listed below:

Mol	Chain	Res	Type	Atoms	Z	Observed(Å)	Ideal(Å)
1	B	126	CYS	CB-SG	-6.98	1.70	1.82
1	A	126	CYS	CB-SG	-5.20	1.73	1.81

All (1) bond angle outliers are listed below:

Mol	Chain	Res	Type	Atoms	Z	Observed(°)	Ideal(°)
1	B	51	ARG	NE-CZ-NH1	5.74	123.17	120.30

There are no chirality outliers.

There are no planarity outliers.

### 5.2 Too-close contacts [i](#)

In the following table, the Non-H and H(model) columns list the number of non-hydrogen atoms and hydrogen atoms in the chain respectively. The H(added) column lists the number of hydrogen atoms added and optimized by MolProbity. The Clashes column lists the number of clashes within the asymmetric unit, whereas Symm-Clashes lists symmetry related clashes.

Mol	Chain	Non-H	H(model)	H(added)	Clashes	Symm-Clashes
1	A	1162	0	1126	29	0
1	B	1154	0	1120	38	0

*Continued on next page...*

*Continued from previous page...*

Mol	Chain	Non-H	H(model)	H(added)	Clashes	Symm-Clashes
2	P	53	0	59	10	0
3	A	12	0	16	0	0
4	A	5	0	5	0	0
5	A	5	0	0	0	0
5	B	7	0	0	0	0
All	All	2398	0	2326	69	0

The all-atom clashscore is defined as the number of clashes found per 1000 atoms (including hydrogen atoms). The all-atom clashscore for this structure is 15.

All (69) close contacts within the same asymmetric unit are listed below, sorted by their clash magnitude.

Atom-1	Atom-2	Interatomic distance (Å)	Clash overlap (Å)
2:P:69:ALA:HB1	2:P:70:PRO:HA	1.48	0.92
1:B:138:LYS:HA	1:B:141:ILE:HD12	1.59	0.84
1:B:100:GLY:O	1:B:101:LYS:HG2	1.78	0.83
2:P:69:ALA:HB1	2:P:70:PRO:CA	2.14	0.77
1:B:44:TYR:HE1	2:P:67:LEU:HB2	1.49	0.76
1:A:24:THR:OG1	1:A:27:ASP:HB2	1.93	0.69
1:B:134:SER:O	1:B:140:LYS:HD3	1.95	0.64
1:A:88:GLN:NE2	1:B:42:TYR:OH	2.31	0.64
1:A:53:GLU:H	1:A:53:GLU:CD	2.03	0.62
1:A:118:LYS:C	1:A:120:PRO:HD2	2.20	0.62
1:A:47:TYR:OH	1:A:82:ILE:HD11	1.99	0.62
1:B:52:ILE:HD13	1:B:52:ILE:N	2.13	0.61
1:B:59:PHE:CE2	1:B:75:GLY:HA3	2.34	0.61
1:B:136:ASP:O	1:B:140:LYS:HG3	2.01	0.61
1:B:97:PHE:CE2	1:B:101:LYS:HA	2.37	0.60
1:A:41:SER:O	1:A:45:ASP:HB2	2.01	0.59
1:B:44:TYR:CE1	2:P:67:LEU:HB2	2.33	0.58
1:B:39:ILE:HG22	1:B:62:LEU:HD11	1.86	0.57
1:B:130:VAL:CG1	1:B:139:LEU:HD23	2.36	0.55
1:A:44:TYR:O	1:A:47:TYR:HB3	2.06	0.55
1:A:125:GLU:O	1:A:129:LEU:HB2	2.08	0.54
1:B:44:TYR:CE1	2:P:67:LEU:HD12	2.44	0.53
1:B:86:PHE:HB2	1:B:117:LEU:HD21	1.91	0.53
1:B:70:VAL:CG2	1:B:99:LEU:HB3	2.39	0.52
1:A:34:ASP:N	1:A:34:ASP:OD1	2.36	0.52
1:A:78:ALA:O	1:A:82:ILE:HG13	2.10	0.52
1:B:103:ASP:OD1	1:B:104:TYR:N	2.42	0.52
1:B:43:ALA:HB1	1:B:59:PHE:CE1	2.45	0.52

*Continued on next page...*

*Continued from previous page...*

Atom-1	Atom-2	Interatomic distance (Å)	Clash overlap (Å)
1:A:24:THR:O	1:A:25:LEU:C	2.48	0.51
1:A:128:GLU:HG3	1:A:147:LEU:HD11	1.93	0.51
1:A:24:THR:H	1:A:27:ASP:HB3	1.75	0.51
1:A:53:GLU:O	1:A:57:VAL:HG23	2.11	0.51
1:A:62:LEU:HD22	1:A:72:TYR:CE2	2.47	0.50
1:B:137:GLU:O	1:B:140:LYS:N	2.39	0.50
1:B:80:TYR:CD1	1:B:88:GLN:HB3	2.47	0.49
1:A:103:ASP:OD1	1:A:104:TYR:N	2.46	0.49
1:A:101:LYS:O	1:A:102:ASN:HB2	2.12	0.49
1:B:59:PHE:CD2	1:B:75:GLY:HA3	2.48	0.49
1:B:138:LYS:CA	1:B:141:ILE:HD12	2.39	0.47
1:B:130:VAL:HG13	1:B:139:LEU:HD23	1.95	0.47
1:B:44:TYR:CZ	2:P:69:ALA:HB3	2.50	0.47
1:B:26:LYS:HB2	1:B:65:TYR:O	2.14	0.47
1:A:56:GLU:OE1	1:A:83:LYS:NZ	2.31	0.46
1:B:108:PHE:O	1:B:111:GLY:N	2.46	0.46
2:P:69:ALA:CB	2:P:70:PRO:CA	2.91	0.46
1:A:96:ALA:O	1:A:97:PHE:C	2.54	0.45
1:B:60:ARG:O	1:B:64:ILE:HG12	2.15	0.45
1:B:130:VAL:HG11	1:B:139:LEU:HD23	1.98	0.45
1:A:135:ASN:O	1:A:136:ASP:C	2.54	0.45
1:A:105:THR:N	1:A:106:PRO:HD2	2.32	0.44
1:B:27:ASP:O	1:B:28:ILE:C	2.55	0.44
1:A:122:LYS:O	1:A:123:ALA:C	2.56	0.44
1:B:27:ASP:O	1:B:30:ALA:N	2.35	0.44
1:B:44:TYR:CE2	2:P:69:ALA:HB3	2.53	0.44
1:B:44:TYR:HE1	2:P:67:LEU:HD12	1.83	0.44
1:B:120:PRO:O	1:B:123:ALA:HB3	2.18	0.43
1:A:53:GLU:CD	1:A:53:GLU:N	2.68	0.43
1:A:62:LEU:HD22	1:A:72:TYR:CZ	2.53	0.43
1:A:67:PHE:O	1:A:73:ILE:HD11	2.19	0.43
1:B:51:ARG:HB3	1:B:54:GLU:OE2	2.18	0.43
1:B:150:ILE:HG22	1:B:151:GLN:N	2.33	0.42
1:B:94:ALA:O	1:B:95:VAL:C	2.56	0.42
1:A:103:ASP:OD1	1:A:103:ASP:C	2.58	0.42
1:A:54:GLU:HG2	1:A:54:GLU:H	1.39	0.42
1:B:69:ASN:OD1	1:B:69:ASN:C	2.58	0.41
1:A:115:LEU:HA	1:A:115:LEU:HD12	1.75	0.41
1:B:115:LEU:CD1	1:B:150:ILE:HD11	2.51	0.41
1:A:127:PHE:O	1:A:130:VAL:HB	2.21	0.40
1:B:81:GLN:NE2	2:P:65:PRO:HG2	2.37	0.40

There are no symmetry-related clashes.

## 5.3 Torsion angles [i](#)

### 5.3.1 Protein backbone [i](#)

In the following table, the Percentiles column shows the percent Ramachandran outliers of the chain as a percentile score with respect to all X-ray entries followed by that with respect to entries of similar resolution.

The Analysed column shows the number of residues for which the backbone conformation was analysed, and the total number of residues.

Mol	Chain	Analysed	Favoured	Allowed	Outliers	Percentiles	
1	A	142/151 (94%)	134 (94%)	8 (6%)	0	100	100
1	B	141/151 (93%)	116 (82%)	15 (11%)	10 (7%)	1	0
2	P	5/78 (6%)	3 (60%)	1 (20%)	1 (20%)	0	0
All	All	288/380 (76%)	253 (88%)	24 (8%)	11 (4%)	3	3

All (11) Ramachandran outliers are listed below:

Mol	Chain	Res	Type
1	B	11	ILE
1	B	51	ARG
1	B	28	ILE
1	B	67	PHE
1	B	138	LYS
2	P	69	ALA
1	B	36	MET
1	B	121	LEU
1	B	137	GLU
1	B	66	ASP
1	B	32	PRO

### 5.3.2 Protein sidechains [i](#)

In the following table, the Percentiles column shows the percent sidechain outliers of the chain as a percentile score with respect to all X-ray entries followed by that with respect to entries of similar resolution.

The Analysed column shows the number of residues for which the sidechain conformation was analysed, and the total number of residues.

Mol	Chain	Analysed	Rotameric	Outliers	Percentiles	
1	A	122/128 (95%)	114 (93%)	8 (7%)	16	25
1	B	121/128 (94%)	113 (93%)	8 (7%)	16	25
2	P	6/66 (9%)	6 (100%)	0	100	100
All	All	249/322 (77%)	233 (94%)	16 (6%)	17	27

All (16) residues with a non-rotameric sidechain are listed below:

Mol	Chain	Res	Type
1	A	21	SER
1	A	34	ASP
1	A	36	MET
1	A	41	SER
1	A	54	GLU
1	A	125	GLU
1	A	138	LYS
1	A	140	LYS
1	B	10	SER
1	B	41	SER
1	B	45	ASP
1	B	67	PHE
1	B	99	LEU
1	B	101	LYS
1	B	139	LEU
1	B	150	ILE

Some sidechains can be flipped to improve hydrogen bonding and reduce clashes. All (3) such sidechains are listed below:

Mol	Chain	Res	Type
1	A	85	GLN
1	A	88	GLN
1	B	81	GLN

### 5.3.3 RNA ⓘ

There are no RNA molecules in this entry.

## 5.4 Non-standard residues in protein, DNA, RNA chains ⓘ

There are no non-standard protein/DNA/RNA residues in this entry.

## 5.5 Carbohydrates

There are no carbohydrates in this entry.

## 5.6 Ligand geometry

3 ligands are modelled in this entry.

In the following table, the Counts columns list the number of bonds (or angles) for which Mogul statistics could be retrieved, the number of bonds (or angles) that are observed in the model and the number of bonds (or angles) that are defined in the Chemical Component Dictionary. The Link column lists molecule types, if any, to which the group is linked. The Z score for a bond length (or angle) is the number of standard deviations the observed value is removed from the expected value. A bond length (or angle) with  $|Z| > 2$  is considered an outlier worth inspection. RMSZ is the root-mean-square of all Z scores of the bond lengths (or angles).

Mol	Type	Chain	Res	Link	Bond lengths			Bond angles		
					Counts	RMSZ	$\# Z  > 2$	Counts	RMSZ	$\# Z  > 2$
3	GOL	A	152	-	5,5,5	0.44	0	5,5,5	0.40	0
4	IMD	A	154	-	3,5,5	0.42	0	4,5,5	1.01	0
3	GOL	A	153	-	5,5,5	0.81	0	5,5,5	0.79	0

In the following table, the Chirals column lists the number of chiral outliers, the number of chiral centers analysed, the number of these observed in the model and the number defined in the Chemical Component Dictionary. Similar counts are reported in the Torsion and Rings columns. '-' means no outliers of that kind were identified.

Mol	Type	Chain	Res	Link	Chirals	Torsions	Rings
3	GOL	A	152	-	-	2/4/4/4	-
4	IMD	A	154	-	-	-	0/1/1/1
3	GOL	A	153	-	-	2/4/4/4	-

There are no bond length outliers.

There are no bond angle outliers.

There are no chirality outliers.

All (4) torsion outliers are listed below:

Mol	Chain	Res	Type	Atoms
3	A	153	GOL	C1-C2-C3-O3
3	A	153	GOL	O2-C2-C3-O3
3	A	152	GOL	O2-C2-C3-O3
3	A	152	GOL	C1-C2-C3-O3

There are no ring outliers.

No monomer is involved in short contacts.

## 5.7 Other polymers

There are no such residues in this entry.

## 5.8 Polymer linkage issues

There are no chain breaks in this entry.

## 6 Fit of model and data ⓘ

### 6.1 Protein, DNA and RNA chains ⓘ

In the following table, the column labelled ‘#RSRZ> 2’ contains the number (and percentage) of RSRZ outliers, followed by percent RSRZ outliers for the chain as percentile scores relative to all X-ray entries and entries of similar resolution. The OWAB column contains the minimum, median, 95<sup>th</sup> percentile and maximum values of the occupancy-weighted average B-factor per residue. The column labelled ‘Q< 0.9’ lists the number of (and percentage) of residues with an average occupancy less than 0.9.

Mol	Chain	Analysed	<RSRZ>	#RSRZ>2	OWAB(Å <sup>2</sup> )	Q<0.9
1	A	144/151 (95%)	0.17	1 (0%) 87 87	45, 69, 94, 124	0
1	B	143/151 (94%)	0.20	8 (5%) 24 21	53, 82, 109, 132	0
2	P	7/78 (8%)	2.18	3 (42%) 0 0	133, 136, 148, 156	0
All	All	294/380 (77%)	0.24	12 (4%) 37 33	45, 77, 109, 156	0

All (12) RSRZ outliers are listed below:

Mol	Chain	Res	Type	RSRZ
2	P	64	ILE	6.1
1	B	130	VAL	4.0
1	B	127	PHE	3.2
1	B	9	GLU	3.0
1	B	13	THR	2.8
1	B	19	ILE	2.8
2	P	65	PRO	2.7
1	B	20	ASN	2.5
2	P	70	PRO	2.4
1	B	17	ASP	2.2
1	A	131	ILE	2.1
1	B	16	ILE	2.0

### 6.2 Non-standard residues in protein, DNA, RNA chains ⓘ

There are no non-standard protein/DNA/RNA residues in this entry.

### 6.3 Carbohydrates ⓘ

There are no carbohydrates in this entry.

## 6.4 Ligands [i](#)

In the following table, the Atoms column lists the number of modelled atoms in the group and the number defined in the chemical component dictionary. The B-factors column lists the minimum, median, 95<sup>th</sup> percentile and maximum values of B factors of atoms in the group. The column labelled 'Q< 0.9' lists the number of atoms with occupancy less than 0.9.

Mol	Type	Chain	Res	Atoms	RSCC	RSR	B-factors(Å <sup>2</sup> )	Q<0.9
3	GOL	A	153	6/6	0.63	0.51	89,96,97,100	0
3	GOL	A	152	6/6	0.89	0.29	104,105,106,106	0
4	IMD	A	154	5/5	0.96	0.14	94,94,95,96	0

## 6.5 Other polymers [i](#)

There are no such residues in this entry.