



# Full wwPDB X-ray Structure Validation Report ⓘ

May 16, 2020 – 09:46 am BST

PDB ID : 3GZX  
Title : Crystal Structure of the Biphenyl Dioxygenase in complex with Biphenyl from Comamonas testosteroni Sp. Strain B-356  
Authors : Kumar, P.; Colbert, C.L.; Bolin, J.T.  
Deposited on : 2009-04-08  
Resolution : 1.58 Å(reported)

This is a Full wwPDB X-ray Structure Validation Report for a publicly released PDB entry.

We welcome your comments at [validation@mail.wwpdb.org](mailto:validation@mail.wwpdb.org)

A user guide is available at

<https://www.wwpdb.org/validation/2017/XrayValidationReportHelp>

with specific help available everywhere you see the ⓘ symbol.

---

The following versions of software and data (see [references ⓘ](#)) were used in the production of this report:

MolProbity : 4.02b-467  
Mogul : 1.8.5 (274361), CSD as541be (2020)  
Xtriage (Phenix) : 1.13  
EDS : 2.11  
Percentile statistics : 20191225.v01 (using entries in the PDB archive December 25th 2019)  
Refmac : 5.8.0158  
CCP4 : 7.0.044 (Gargrove)  
Ideal geometry (proteins) : Engh & Huber (2001)  
Ideal geometry (DNA, RNA) : Parkinson et al. (1996)  
Validation Pipeline (wwPDB-VP) : 2.11

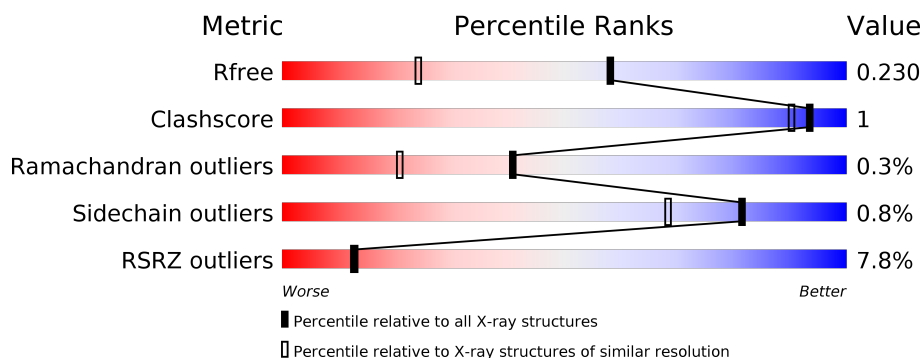
# 1 Overall quality at a glance

The following experimental techniques were used to determine the structure:

## *X-RAY DIFFRACTION*


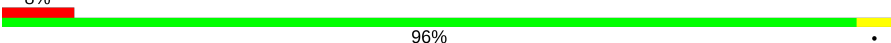
The reported resolution of this entry is 1.58 Å.

Percentile scores (ranging between 0-100) for global validation metrics of the entry are shown in the following graphic. The table shows the number of entries on which the scores are based.



Metric	Whole archive (#Entries)	Similar resolution (#Entries, resolution range(Å))
$R_{free}$	130704	5534 (1.60-1.56)
Clashscore	141614	5861 (1.60-1.56)
Ramachandran outliers	138981	5708 (1.60-1.56)
Sidechain outliers	138945	5703 (1.60-1.56)
RSRZ outliers	127900	5431 (1.60-1.56)

The table below summarises the geometric issues observed across the polymeric chains and their fit to the electron density. The red, orange, yellow and green segments on the lower bar indicate the fraction of residues that contain outliers for  $\geq 3$ , 2, 1 and 0 types of geometric quality criteria respectively. A grey segment represents the fraction of residues that are not modelled. The numeric value for each fraction is indicated below the corresponding segment, with a dot representing fractions  $\leq 5\%$ . The upper red bar (where present) indicates the fraction of residues that have poor fit to the electron density. The numeric value is given above the bar.

Mol	Chain	Length	Quality of chain
1	A	457	
2	B	186	

## 2 Entry composition [i](#)

There are 8 unique types of molecules in this entry. The entry contains 5787 atoms, of which 0 are hydrogens and 0 are deuteriums.

In the tables below, the ZeroOcc column contains the number of atoms modelled with zero occupancy, the AltConf column contains the number of residues with at least one atom in alternate conformation and the Trace column contains the number of residues modelled with at most 2 atoms.

- Molecule 1 is a protein called Biphenyl dioxygenase subunit alpha.

Mol	Chain	Residues	Atoms					ZeroOcc	AltConf	Trace
1	A	440	Total	C	N	O	S	8	13	0
			3561	2270	612	650	29			

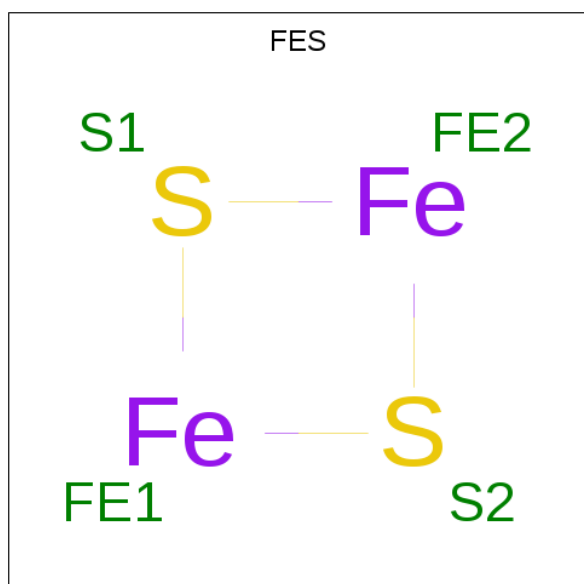
- Molecule 2 is a protein called Biphenyl dioxygenase subunit beta.

Mol	Chain	Residues	Atoms					ZeroOcc	AltConf	Trace
2	B	186	Total	C	N	O	S	3	2	0
			1533	977	272	279	5			

- Molecule 3 is FE (II) ION (three-letter code: FE2) (formula: Fe).

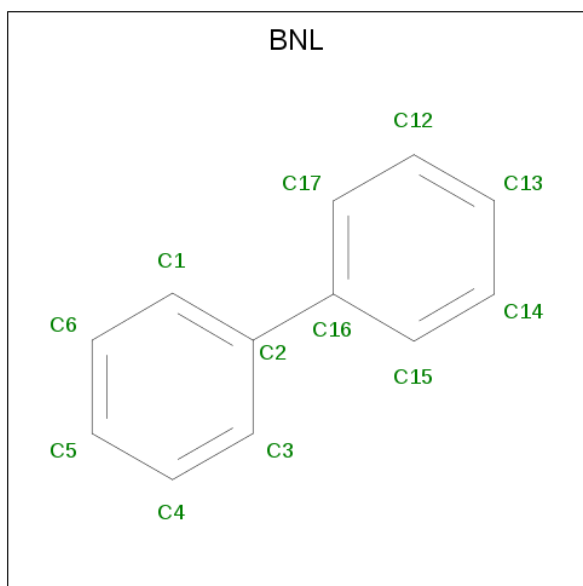
Mol	Chain	Residues	Atoms		ZeroOcc	AltConf
3	A	1	Total	Fe	0	0
			1	1		

- Molecule 4 is FE2/S2 (INORGANIC) CLUSTER (three-letter code: FES) (formula: Fe<sub>2</sub>S<sub>2</sub>).



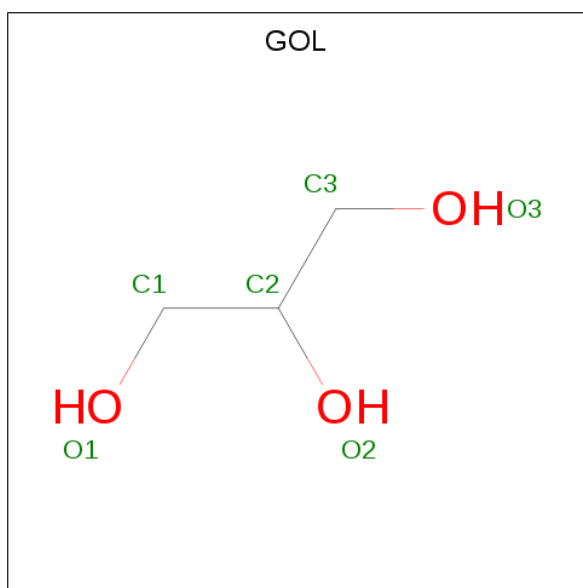
Mol	Chain	Residues	Atoms			ZeroOcc	AltConf
4	A	1	Total	Fe	S	0	0
			4	2	2		

- Molecule 5 is BIPHENYL (three-letter code: BNL) (formula:  $C_{12}H_{10}$ ).



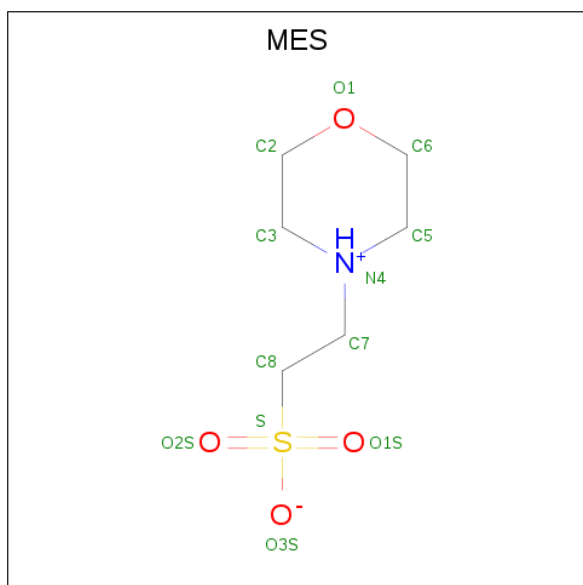
Mol	Chain	Residues	Atoms		ZeroOcc	AltConf
5	A	1	Total	C	0	0
			12	12		

- Molecule 6 is GLYCEROL (three-letter code: GOL) (formula:  $C_3H_8O_3$ ).



Mol	Chain	Residues	Atoms			ZeroOcc	AltConf
6	A	1	Total	C	O	0	0
			6	3	3		
6	A	1	Total	C	O	0	0
			6	3	3		

- Molecule 7 is 2-(N-MORPHOLINO)-ETHANESULFONIC ACID (three-letter code: MES) (formula: C<sub>6</sub>H<sub>13</sub>NO<sub>4</sub>S).



Mol	Chain	Residues	Atoms					ZeroOcc	AltConf
7	B	1	Total	C	N	O	S	0	1
			24	12	2	8	2		

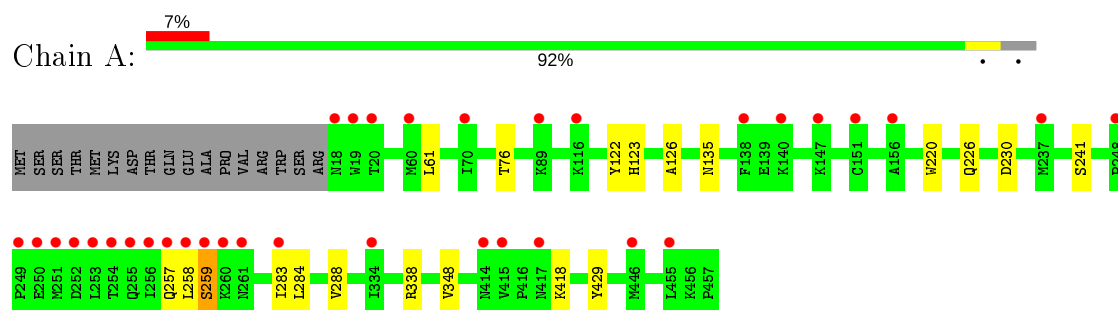
- Molecule 8 is water.

Mol	Chain	Residues	Atoms		ZeroOcc	AltConf
8	A	433	Total	O	0	0
			433	433		
8	B	207	Total	O	0	0
			207	207		

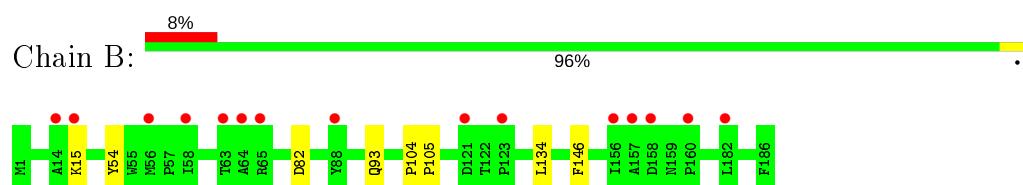
### 3 Residue-property plots [i](#)

These plots are drawn for all protein, RNA and DNA chains in the entry. The first graphic for a chain summarises the proportions of the various outlier classes displayed in the second graphic. The second graphic shows the sequence view annotated by issues in geometry and electron density. Residues are color-coded according to the number of geometric quality criteria for which they contain at least one outlier: green = 0, yellow = 1, orange = 2 and red = 3 or more. A red dot above a residue indicates a poor fit to the electron density ( $RSRZ > 2$ ). Stretches of 2 or more consecutive residues without any outlier are shown as a green connector. Residues present in the sample, but not in the model, are shown in grey.

- Molecule 1: Biphenyl dioxygenase subunit alpha



- Molecule 2: Biphenyl dioxygenase subunit beta



## 4 Data and refinement statistics

Property	Value	Source
Space group	H 3	Depositor
Cell constants a, b, c, $\alpha$ , $\beta$ , $\gamma$	136.35Å 136.35Å 107.16Å 90.00° 90.00° 120.00°	Depositor
Resolution (Å)	24.18 – 1.58 24.18 – 1.58	Depositor EDS
% Data completeness (in resolution range)	94.8 (24.18-1.58) 94.7 (24.18-1.58)	Depositor EDS
$R_{merge}$	0.09	Depositor
$R_{sym}$	0.09	Depositor
$\langle I/\sigma(I) \rangle$ <sup>1</sup>	1.88 (at 1.58Å)	Xtriage
Refinement program	REFMAC 5.2.0005	Depositor
R, $R_{free}$	0.206 , 0.218 0.220 , 0.230	Depositor DCC
$R_{free}$ test set	4823 reflections (5.01%)	wwPDB-VP
Wilson B-factor (Å <sup>2</sup> )	17.6	Xtriage
Anisotropy	0.381	Xtriage
Bulk solvent $k_{sol}$ (e/Å <sup>3</sup> ), $B_{sol}$ (Å <sup>2</sup> )	0.36 , 49.0	EDS
L-test for twinning <sup>2</sup>	$\langle  L  \rangle = 0.46$ , $\langle L^2 \rangle = 0.29$	Xtriage
Estimated twinning fraction	0.059 for h,-h-k,-l	Xtriage
$F_o, F_c$ correlation	0.95	EDS
Total number of atoms	5787	wwPDB-VP
Average B, all atoms (Å <sup>2</sup> )	23.0	wwPDB-VP

Xtriage's analysis on translational NCS is as follows: *The largest off-origin peak in the Patterson function is 3.79% of the height of the origin peak. No significant pseudotranslation is detected.*

<sup>1</sup>Intensities estimated from amplitudes.

<sup>2</sup>Theoretical values of  $\langle |L| \rangle$ ,  $\langle L^2 \rangle$  for acentric reflections are 0.5, 0.333 respectively for untwinned datasets, and 0.375, 0.2 for perfectly twinned datasets.

## 5 Model quality

### 5.1 Standard geometry

Bond lengths and bond angles in the following residue types are not validated in this section: GOL, FE2, FES, MES, BNL

The Z score for a bond length (or angle) is the number of standard deviations the observed value is removed from the expected value. A bond length (or angle) with  $|Z| > 5$  is considered an outlier worth inspection. RMSZ is the root-mean-square of all Z scores of the bond lengths (or angles).

Mol	Chain	Bond lengths		Bond angles	
		RMSZ	# Z  >5	RMSZ	# Z  >5
1	A	0.32	0/3699	0.46	0/5016
2	B	0.32	0/1578	0.48	0/2144
All	All	0.32	0/5277	0.47	0/7160

There are no bond length outliers.

There are no bond angle outliers.

There are no chirality outliers.

There are no planarity outliers.

### 5.2 Too-close contacts

In the following table, the Non-H and H(model) columns list the number of non-hydrogen atoms and hydrogen atoms in the chain respectively. The H(added) column lists the number of hydrogen atoms added and optimized by MolProbity. The Clashes column lists the number of clashes within the asymmetric unit, whereas Symm-Clashes lists symmetry related clashes.

Mol	Chain	Non-H	H(model)	H(added)	Clashes	Symm-Clashes
1	A	3561	0	3469	11	0
2	B	1533	0	1506	4	0
3	A	1	0	0	0	0
4	A	4	0	0	1	0
5	A	12	0	10	0	0
6	A	12	0	16	0	0
7	B	24	0	26	0	0
8	A	433	0	0	0	0
8	B	207	0	0	0	0
All	All	5787	0	5027	14	0

The all-atom clashscore is defined as the number of clashes found per 1000 atoms (including



hydrogen atoms). The all-atom clashscore for this structure is 1.

All (14) close contacts within the same asymmetric unit are listed below, sorted by their clash magnitude.

Atom-1	Atom-2	Interatomic distance (Å)	Clash overlap (Å)
1:A:258:LEU:O	1:A:259:SER:CB	2.36	0.74
1:A:123:HIS:HB2	4:A:700:FES:S1	2.45	0.57
1:A:126:ALA:HB3	1:A:135:ASN:HB3	1.86	0.56
1:A:258:LEU:O	1:A:259:SER:HB2	2.05	0.55
1:A:61:LEU:HB3	1:A:76:THR:HG21	1.89	0.55
1:A:241:SER:HB2	2:B:93:GLN:HG3	1.92	0.50
1:A:258:LEU:O	1:A:259:SER:HB3	2.10	0.50
1:A:226:GLN:HA	1:A:230:ASP:HB3	1.96	0.48
1:A:284:LEU:O	1:A:288:VAL:HG22	2.16	0.45
1:A:220:TRP:HA	1:A:348[B]:VAL:HG11	2.00	0.43
2:B:134:LEU:HB3	2:B:146:PHE:HB2	2.00	0.43
2:B:104:PRO:HA	2:B:105:PRO:HD3	1.85	0.42
1:A:418:LYS:HD2	1:A:429:TYR:HB2	2.02	0.41
2:B:54:TYR:HB3	2:B:82:ASP:HB2	2.03	0.41

There are no symmetry-related clashes.

## 5.3 Torsion angles ⓘ

### 5.3.1 Protein backbone ⓘ

In the following table, the Percentiles column shows the percent Ramachandran outliers of the chain as a percentile score with respect to all X-ray entries followed by that with respect to entries of similar resolution.

The Analysed column shows the number of residues for which the backbone conformation was analysed, and the total number of residues.

Mol	Chain	Analysed	Favoured	Allowed	Outliers	Percentiles	
1	A	451/457 (99%)	432 (96%)	17 (4%)	2 (0%)	34	15
2	B	186/186 (100%)	179 (96%)	7 (4%)	0	100	100
All	All	637/643 (99%)	611 (96%)	24 (4%)	2 (0%)	41	21

All (2) Ramachandran outliers are listed below:

Mol	Chain	Res	Type
1	A	257	GLN

*Continued on next page...*

*Continued from previous page...*

Mol	Chain	Res	Type
1	A	259	SER

### 5.3.2 Protein sidechains ⓘ

In the following table, the Percentiles column shows the percent sidechain outliers of the chain as a percentile score with respect to all X-ray entries followed by that with respect to entries of similar resolution.

The Analysed column shows the number of residues for which the sidechain conformation was analysed, and the total number of residues.

Mol	Chain	Analysed	Rotameric	Outliers	Percentiles	
1	A	379/382 (99%)	376 (99%)	3 (1%)	81	68
2	B	164/162 (101%)	163 (99%)	1 (1%)	86	76
All	All	543/544 (100%)	539 (99%)	4 (1%)	81	72

All (4) residues with a non-rotameric sidechain are listed below:

Mol	Chain	Res	Type
1	A	122	TYR
1	A	283	ILE
1	A	338	ARG
2	B	15	LYS

Some sidechains can be flipped to improve hydrogen bonding and reduce clashes. There are no such sidechains identified.

### 5.3.3 RNA ⓘ

There are no RNA molecules in this entry.

## 5.4 Non-standard residues in protein, DNA, RNA chains ⓘ

There are no non-standard protein/DNA/RNA residues in this entry.

## 5.5 Carbohydrates ⓘ

There are no carbohydrates in this entry.

## 5.6 Ligand geometry

Of 7 ligands modelled in this entry, 1 is monoatomic - leaving 6 for Mogul analysis.

In the following table, the Counts columns list the number of bonds (or angles) for which Mogul statistics could be retrieved, the number of bonds (or angles) that are observed in the model and the number of bonds (or angles) that are defined in the Chemical Component Dictionary. The Link column lists molecule types, if any, to which the group is linked. The Z score for a bond length (or angle) is the number of standard deviations the observed value is removed from the expected value. A bond length (or angle) with  $|Z| > 2$  is considered an outlier worth inspection. RMSZ is the root-mean-square of all Z scores of the bond lengths (or angles).

Mol	Type	Chain	Res	Link	Bond lengths			Bond angles		
					Counts	RMSZ	$\# Z  > 2$	Counts	RMSZ	$\# Z  > 2$
5	BNL	A	702	-	13,13,13	0.53	0	16,16,16	0.59	0
7	MES	B	704[A]	-	12,12,12	0.37	0	14,16,16	0.87	0
4	FES	A	700	1	0,4,4	0.00	-	-		
6	GOL	A	706	-	5,5,5	0.47	0	5,5,5	0.62	0
6	GOL	A	705	-	5,5,5	0.47	0	5,5,5	0.64	0
7	MES	B	704[B]	-	12,12,12	0.39	0	14,16,16	0.82	0

In the following table, the Chirals column lists the number of chiral outliers, the number of chiral centers analysed, the number of these observed in the model and the number defined in the Chemical Component Dictionary. Similar counts are reported in the Torsion and Rings columns. '-' means no outliers of that kind were identified.

Mol	Type	Chain	Res	Link	Chirals	Torsions	Rings
5	BNL	A	702	-	-	4/4/4/4	0/2/2/2
7	MES	B	704[A]	-	-	5/6/14/14	0/1/1/1
4	FES	A	700	1	-	-	0/1/1/1
6	GOL	A	706	-	-	1/4/4/4	-
6	GOL	A	705	-	-	2/4/4/4	-
7	MES	B	704[B]	-	-	2/6/14/14	0/1/1/1

There are no bond length outliers.

There are no bond angle outliers.

There are no chirality outliers.

All (14) torsion outliers are listed below:

Mol	Chain	Res	Type	Atoms
7	B	704[A]	MES	C7-C8-S-O2S
7	B	704[A]	MES	C7-C8-S-O3S
7	B	704[B]	MES	C8-C7-N4-C3

*Continued on next page...*

*Continued from previous page...*

Mol	Chain	Res	Type	Atoms
7	B	704[B]	MES	C8-C7-N4-C5
5	A	702	BNL	C15-C16-C2-C1
5	A	702	BNL	C17-C16-C2-C1
5	A	702	BNL	C15-C16-C2-C3
5	A	702	BNL	C17-C16-C2-C3
6	A	706	GOL	O1-C1-C2-C3
6	A	705	GOL	O1-C1-C2-C3
7	B	704[A]	MES	C8-C7-N4-C3
7	B	704[A]	MES	C8-C7-N4-C5
6	A	705	GOL	O2-C2-C3-O3
7	B	704[A]	MES	C7-C8-S-O1S

There are no ring outliers.

1 monomer is involved in 1 short contact:

Mol	Chain	Res	Type	Clashes	Symm-Clashes
4	A	700	FES	1	0

## 5.7 Other polymers [i](#)

There are no such residues in this entry.

## 5.8 Polymer linkage issues [i](#)

There are no chain breaks in this entry.

## 6 Fit of model and data ⓘ

### 6.1 Protein, DNA and RNA chains ⓘ

In the following table, the column labelled ‘#RSRZ> 2’ contains the number (and percentage) of RSRZ outliers, followed by percent RSRZ outliers for the chain as percentile scores relative to all X-ray entries and entries of similar resolution. The OWAB column contains the minimum, median, 95<sup>th</sup> percentile and maximum values of the occupancy-weighted average B-factor per residue. The column labelled ‘Q< 0.9’ lists the number of (and percentage) of residues with an average occupancy less than 0.9.

Mol	Chain	Analysed	<RSRZ>	#RSRZ>2		OWAB(Å <sup>2</sup> )	Q<0.9
1	A	440/457 (96%)	0.48	34 (7%)	13 13	20, 22, 27, 31	25 (5%)
2	B	186/186 (100%)	0.53	15 (8%)	12 12	19, 22, 25, 28	8 (4%)
All	All	626/643 (97%)	0.50	49 (7%)	13 13	19, 22, 26, 31	33 (5%)

All (49) RSRZ outliers are listed below:

Mol	Chain	Res	Type	RSRZ
1	A	258	LEU	8.3
1	A	18	ASN	6.6
1	A	283	ILE	6.5
2	B	65	ARG	6.1
1	A	257	GLN	6.0
1	A	261[A]	ASN	5.8
2	B	158	ASP	5.6
1	A	256	ILE	5.4
2	B	121	ASP	5.1
2	B	14	ALA	4.8
1	A	255	GLN	4.7
1	A	254	THR	4.0
2	B	15	LYS	4.0
1	A	259	SER	3.9
1	A	237[A]	MET	3.8
1	A	60[A]	MET	3.7
1	A	248	PRO	3.6
2	B	160	PRO	3.6
2	B	56[A]	MET	3.6
1	A	455[A]	LEU	3.3
2	B	123	PRO	3.1
1	A	249	PRO	3.0
1	A	250	GLU	2.9
1	A	446[A]	MET	2.8

*Continued on next page...*

*Continued from previous page...*

Mol	Chain	Res	Type	RSRZ
1	A	20	THR	2.8
1	A	414	ASN	2.7
1	A	151	CYS	2.7
2	B	63	THR	2.7
1	A	19	TRP	2.7
1	A	251	MET	2.7
1	A	140	LYS	2.6
1	A	116	LYS	2.6
1	A	260	LYS	2.6
1	A	415	VAL	2.5
2	B	64	ALA	2.4
1	A	138	PHE	2.4
1	A	70	ILE	2.4
2	B	88	TYR	2.4
2	B	182	LEU	2.3
1	A	252	ASP	2.3
2	B	156	ILE	2.2
2	B	157	ALA	2.2
1	A	89	LYS	2.2
1	A	334	ILE	2.1
1	A	156	ALA	2.1
1	A	417	ASN	2.1
1	A	147	LYS	2.1
1	A	253	LEU	2.1
2	B	58	ILE	2.0

## 6.2 Non-standard residues in protein, DNA, RNA chains ⓘ

There are no non-standard protein/DNA/RNA residues in this entry.

## 6.3 Carbohydrates ⓘ

There are no carbohydrates in this entry.

## 6.4 Ligands ⓘ

In the following table, the Atoms column lists the number of modelled atoms in the group and the number defined in the chemical component dictionary. The B-factors column lists the minimum, median, 95<sup>th</sup> percentile and maximum values of B factors of atoms in the group. The column labelled 'Q< 0.9' lists the number of atoms with occupancy less than 0.9.

Mol	Type	Chain	Res	Atoms	RSCC	RSR	B-factors( $\text{\AA}^2$ )	Q<0.9
6	GOL	A	705	6/6	0.55	0.26	39,39,39,40	6
5	BNL	A	702	12/12	0.58	0.20	33,33,33,33	0
6	GOL	A	706	6/6	0.71	0.20	36,36,36,36	6
7	MES	B	704[A]	12/12	0.93	0.12	18,18,18,18	12
7	MES	B	704[B]	12/12	0.93	0.12	64,64,64,64	12
3	FE2	A	701	1/1	0.94	0.04	26,26,26,26	0
4	FES	A	700	4/4	0.98	0.05	17,17,18,18	0

## 6.5 Other polymers [i](#)

There are no such residues in this entry.