



wwPDB X-ray Structure Validation Summary Report ⓘ

Jun 14, 2020 – 12:39 pm BST

PDB ID : 2H12
Title : Structure of Acetobacter aceti citrate synthase complexed with oxaloacetate and carboxymethyldethia coenzyme A (CMX)
Authors : Starks, C.M.; Kappock, T.J.
Deposited on : 2006-05-15
Resolution : 1.85 Å(reported)

This is a wwPDB X-ray Structure Validation Summary Report for a publicly released PDB entry.

We welcome your comments at validation@mail.wwpdb.org

A user guide is available at

<https://www.wwpdb.org/validation/2017/XrayValidationReportHelp>

with specific help available everywhere you see the ⓘ symbol.

The following versions of software and data (see [references ⓘ](#)) were used in the production of this report:

MolProbity : 4.02b-467
Mogul : 1.8.5 (274361), CSD as541be (2020)
Xtriage (Phenix) : 1.13
EDS : 2.11
buster-report : 1.1.7 (2018)
Percentile statistics : 20191225.v01 (using entries in the PDB archive December 25th 2019)
Refmac : 5.8.0158
CCP4 : 7.0.044 (Gargrove)
Ideal geometry (proteins) : Engh & Huber (2001)
Ideal geometry (DNA, RNA) : Parkinson et al. (1996)
Validation Pipeline (wwPDB-VP) : 2.11

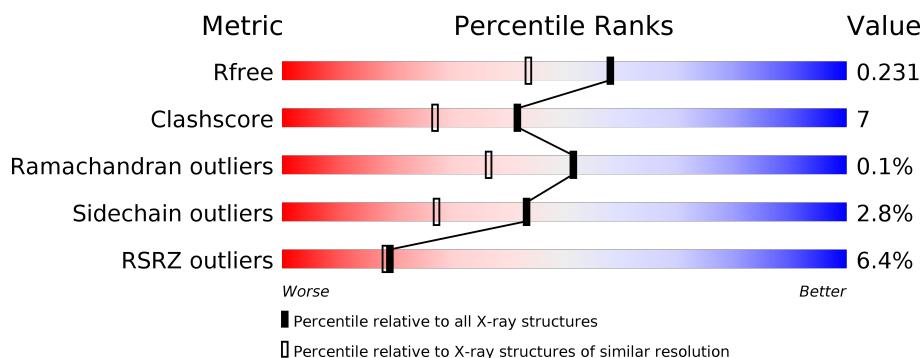
1 Overall quality at a glance

The following experimental techniques were used to determine the structure:

X-RAY DIFFRACTION

The reported resolution of this entry is 1.85 Å.

Percentile scores (ranging between 0-100) for global validation metrics of the entry are shown in the following graphic. The table shows the number of entries on which the scores are based.



Metric	Whole archive (#Entries)	Similar resolution (#Entries, resolution range(Å))
R_{free}	130704	2469 (1.86-1.86)
Clashscore	141614	2625 (1.86-1.86)
Ramachandran outliers	138981	2592 (1.86-1.86)
Sidechain outliers	138945	2592 (1.86-1.86)
RSRZ outliers	127900	2436 (1.86-1.86)

The table below summarises the geometric issues observed across the polymeric chains and their fit to the electron density. The red, orange, yellow and green segments on the lower bar indicate the fraction of residues that contain outliers for ≥ 3 , 2, 1 and 0 types of geometric quality criteria respectively. A grey segment represents the fraction of residues that are not modelled. The numeric value for each fraction is indicated below the corresponding segment, with a dot representing fractions $\leq 5\%$. The upper red bar (where present) indicates the fraction of residues that have poor fit to the electron density. The numeric value is given above the bar.

Mol	Chain	Length	Quality of chain
1	A	436	<div> <div>4%</div> <div> <div></div> <div>83%</div> <div>12%</div> <div></div> </div> <div></div> </div>
1	B	436	<div> <div>7%</div> <div> <div></div> <div>87%</div> <div>10%</div> <div></div> </div> <div></div> </div>
1	C	436	<div> <div>5%</div> <div> <div></div> <div>85%</div> <div>11%</div> <div></div> </div> <div></div> </div>
1	D	436	<div> <div>9%</div> <div> <div></div> <div>85%</div> <div>11%</div> <div></div> </div> <div></div> </div>
1	E	436	<div> <div>7%</div> <div> <div></div> <div>85%</div> <div>11%</div> <div></div> </div> <div></div> </div>
1	F	436	<div> <div>6%</div> <div> <div></div> <div>83%</div> <div>12%</div> <div></div> </div> <div></div> </div>

The following table lists non-polymeric compounds, carbohydrate monomers and non-standard residues in protein, DNA, RNA chains that are outliers for geometric or electron-density-fit criteria:

Mol	Type	Chain	Res	Chirality	Geometry	Clashes	Electron density
3	SO4	A	5040	-	-	-	X
3	SO4	A	5047	-	-	-	X
3	SO4	A	5052	-	-	-	X
3	SO4	B	5053	-	-	-	X
3	SO4	C	5041	-	-	X	X
3	SO4	E	5037	-	-	-	X
3	SO4	E	5043	-	-	-	X
3	SO4	F	5044	-	-	-	X
3	SO4	F	5051	-	-	-	X

2 Entry composition

There are 5 unique types of molecules in this entry. The entry contains 23521 atoms, of which 0 are hydrogens and 0 are deuteriums.

In the tables below, the ZeroOcc column contains the number of atoms modelled with zero occupancy, the AltConf column contains the number of residues with at least one atom in alternate conformation and the Trace column contains the number of residues modelled with at most 2 atoms.

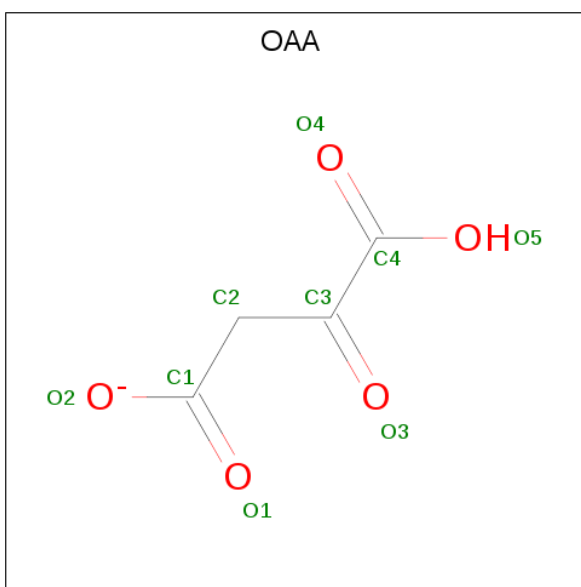
- Molecule 1 is a protein called Citrate synthase.

Mol	Chain	Residues	Atoms					ZeroOcc	AltConf	Trace
1	A	418	Total	C	N	O	S	0	0	0
			3258	2086	563	592	17			
1	B	426	Total	C	N	O	S	0	0	0
			3313	2119	572	605	17			
1	C	426	Total	C	N	O	S	0	0	0
			3315	2121	572	605	17			
1	D	417	Total	C	N	O	S	0	0	0
			3253	2083	562	591	17			
1	E	426	Total	C	N	O	S	0	0	0
			3315	2121	572	605	17			
1	F	420	Total	C	N	O	S	0	0	0
			3273	2095	565	596	17			

There are 12 discrepancies between the modelled and reference sequences:

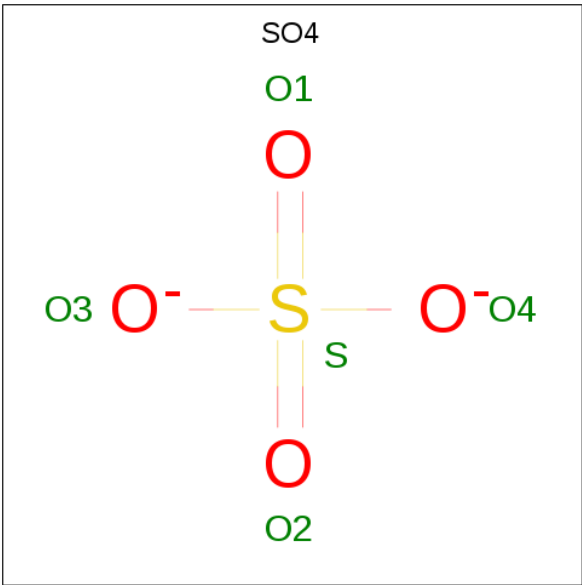
Chain	Residue	Modelled	Actual	Comment	Reference
A	85	ALA	ASP	SEE REMARK 999	UNP P20901
A	106	ALA	VAL	SEE REMARK 999	UNP P20901
B	85	ALA	ASP	SEE REMARK 999	UNP P20901
B	106	ALA	VAL	SEE REMARK 999	UNP P20901
C	85	ALA	ASP	SEE REMARK 999	UNP P20901
C	106	ALA	VAL	SEE REMARK 999	UNP P20901
D	85	ALA	ASP	SEE REMARK 999	UNP P20901
D	106	ALA	VAL	SEE REMARK 999	UNP P20901
E	85	ALA	ASP	SEE REMARK 999	UNP P20901
E	106	ALA	VAL	SEE REMARK 999	UNP P20901
F	85	ALA	ASP	SEE REMARK 999	UNP P20901
F	106	ALA	VAL	SEE REMARK 999	UNP P20901

- Molecule 2 is OXALOACETATE ION (three-letter code: OAA) (formula: C₄H₃O₅).



Mol	Chain	Residues	Atoms			ZeroOcc	AltConf
2	A	1	Total	C	O	0	0
			9	4	5		
2	B	1	Total	C	O	0	0
			9	4	5		
2	C	1	Total	C	O	0	0
			9	4	5		
2	D	1	Total	C	O	0	0
			9	4	5		
2	E	1	Total	C	O	0	0
			9	4	5		
2	F	1	Total	C	O	0	0
			9	4	5		

- Molecule 3 is SULFATE ION (three-letter code: SO4) (formula: O₄S).



Mol	Chain	Residues	Atoms			ZeroOcc	AltConf
3	A	1	Total	O	S	0	0
			5	4	1		
3	A	1	Total	O	S	0	0
			5	4	1		
3	A	1	Total	O	S	0	0
			5	4	1		
3	A	1	Total	O	S	0	0
			5	4	1		
3	A	1	Total	O	S	0	0
			5	4	1		
3	A	1	Total	O	S	0	0
			5	4	1		
3	B	1	Total	O	S	0	0
			5	4	1		
3	B	1	Total	O	S	0	0
			5	4	1		
3	B	1	Total	O	S	0	0
			5	4	1		
3	B	1	Total	O	S	0	0
			5	4	1		
3	B	1	Total	O	S	0	0
			5	4	1		

Continued on next page...

Continued from previous page...

Mol	Chain	Residues	Atoms			ZeroOcc	AltConf
3	B	1	Total	O	S	0	0
			5	4	1		
3	B	1	Total	O	S	0	0
			5	4	1		
3	C	1	Total	O	S	0	0
			5	4	1		
3	C	1	Total	O	S	0	0
			5	4	1		
3	C	1	Total	O	S	0	0
			5	4	1		
3	C	1	Total	O	S	0	0
			5	4	1		
3	C	1	Total	O	S	0	0
			5	4	1		
3	D	1	Total	O	S	0	0
			5	4	1		
3	D	1	Total	O	S	0	0
			5	4	1		
3	D	1	Total	O	S	0	0
			5	4	1		
3	D	1	Total	O	S	0	0
			5	4	1		
3	D	1	Total	O	S	0	0
			5	4	1		
3	E	1	Total	O	S	0	0
			5	4	1		
3	E	1	Total	O	S	0	0
			5	4	1		
3	E	1	Total	O	S	0	0
			5	4	1		
3	E	1	Total	O	S	0	0
			5	4	1		
3	E	1	Total	O	S	0	0
			5	4	1		
3	E	1	Total	O	S	0	0
			5	4	1		

Continued on next page...

[illegible]

-
- The chemical structure of CMX (CMX-001) is a complex molecule. It features a purine core system. The purine ring is substituted with an amino group (NH₂) at position 6 and a methyl group (CH₃) at position 9. The purine is linked via a glycosidic bond to a ribose sugar. The ribose sugar is further substituted with a phosphate group at the 3' position and a methyl group at the 2' position. The phosphate group is linked to a long side chain that includes a carboxylic acid group, a methyl group, and a phosphate group. The side chain is further substituted with a carboxylic acid group, a methyl group, and a phosphate group. The molecule is highly polar due to the presence of multiple phosphate and carboxylic acid groups.

Mol	Chain	Residues	Atoms					ZeroOcc	AltConf
4	A	1	Total 51	C 23	N 7	O 18	P 3	0	0
4	B	1	Total 51	C 23	N 7	O 18	P 3	0	0
4	C	1	Total 51	C 23	N 7	O 18	P 3	0	0
4	D	1	Total 51	C 23	N 7	O 18	P 3	0	0
4	E	1	Total 51	C 23	N 7	O 18	P 3	0	0



WORLD WIDE
PDB
PROTEIN DATA BANK

Continued from previous page...

Mol	Chain	Residues	Atoms					ZeroOcc	AltConf
4	F	1	Total	C	N	O	P	0	0
			51	23	7	18	3		

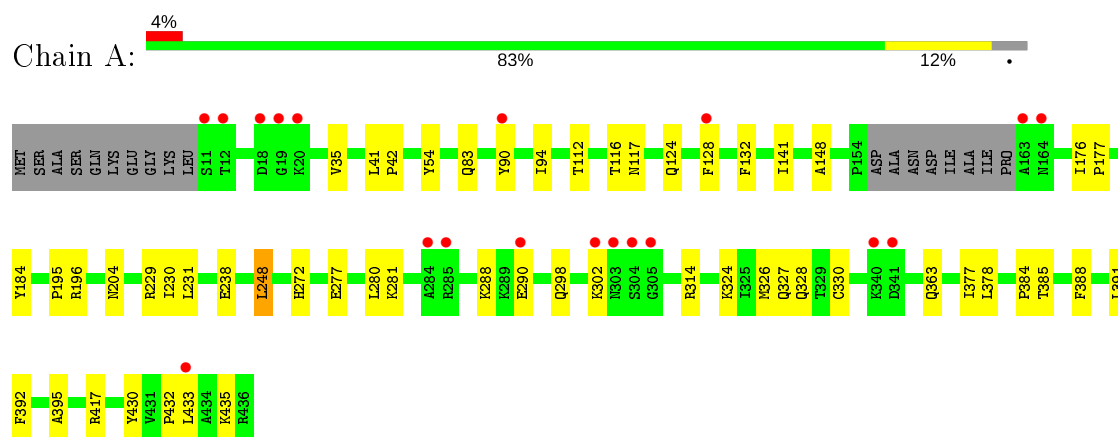
- Molecule 5 is water.

Mol	Chain	Residues	Atoms		ZeroOcc	AltConf
5	A	561	Total	O	0	0
			561	561		
5	B	555	Total	O	0	0
			555	555		
5	C	526	Total	O	0	0
			526	526		
5	D	499	Total	O	0	0
			499	499		
5	E	547	Total	O	0	0
			547	547		
5	F	541	Total	O	0	0
			541	541		

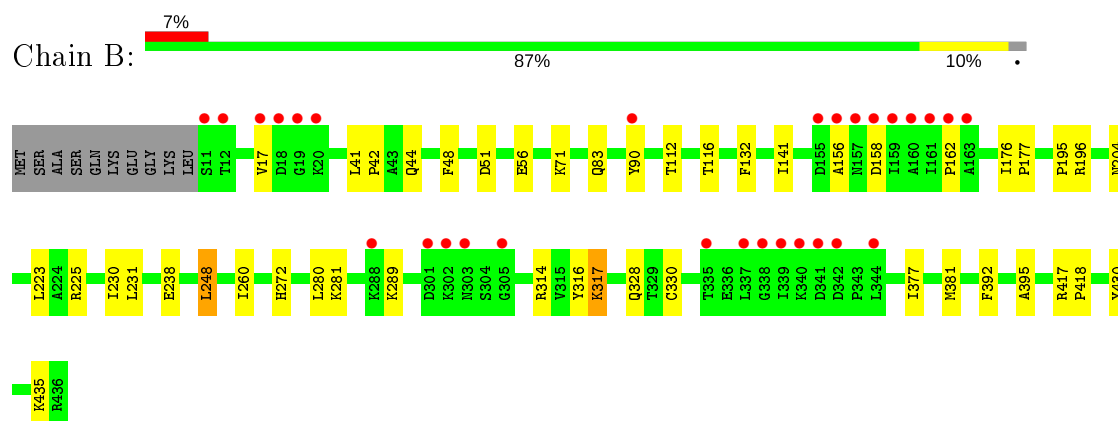
3 Residue-property plots [i](#)

These plots are drawn for all protein, RNA and DNA chains in the entry. The first graphic for a chain summarises the proportions of the various outlier classes displayed in the second graphic. The second graphic shows the sequence view annotated by issues in geometry and electron density. Residues are color-coded according to the number of geometric quality criteria for which they contain at least one outlier: green = 0, yellow = 1, orange = 2 and red = 3 or more. A red dot above a residue indicates a poor fit to the electron density ($RSRZ > 2$). Stretches of 2 or more consecutive residues without any outlier are shown as a green connector. Residues present in the sample, but not in the model, are shown in grey.

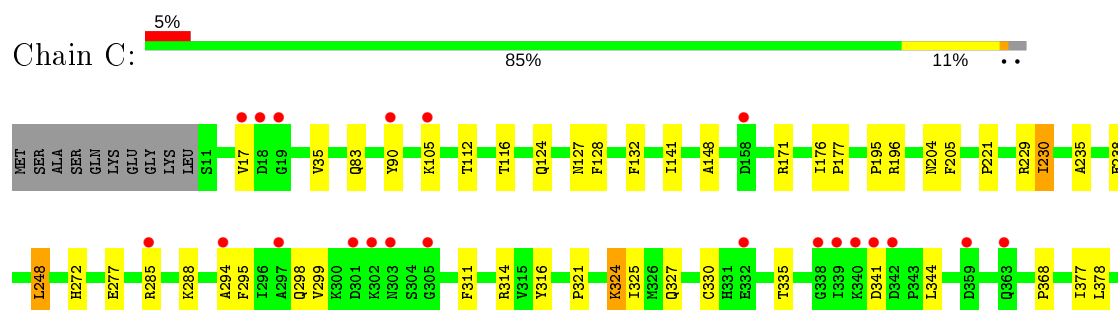
• Molecule 1: Citrate synthase



• Molecule 1: Citrate synthase

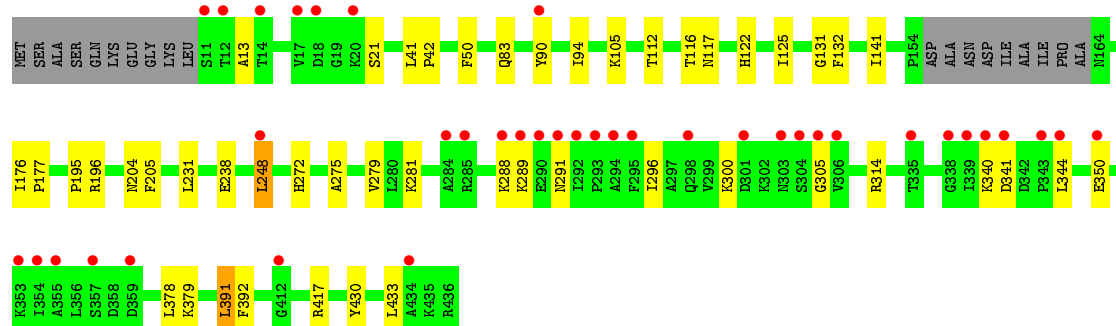
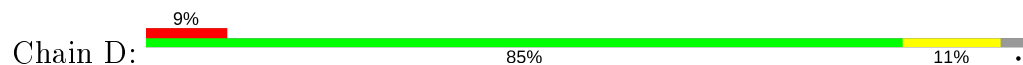


• Molecule 1: Citrate synthase

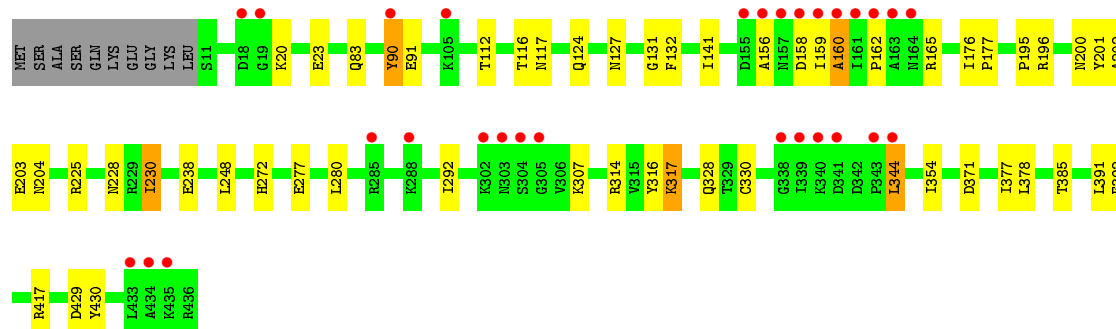
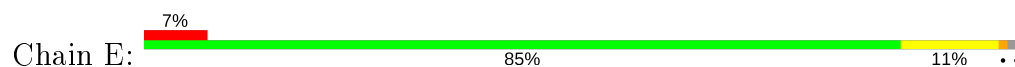




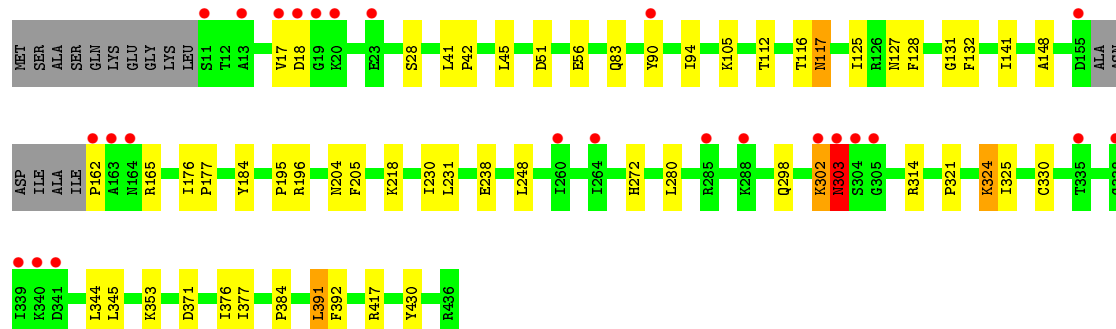
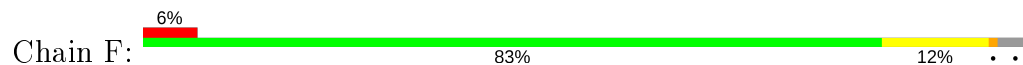
• Molecule 1: Citrate synthase



• Molecule 1: Citrate synthase



• Molecule 1: Citrate synthase



4 Data and refinement statistics

Property	Value	Source
Space group	P 21 21 21	Depositor
Cell constants a, b, c, α , β , γ	170.66Å 125.69Å 150.59Å 90.00° 90.00° 90.00°	Depositor
Resolution (Å)	39.28 – 1.85 39.28 – 1.85	Depositor EDS
% Data completeness (in resolution range)	99.4 (39.28-1.85) 99.6 (39.28-1.85)	Depositor EDS
R_{merge}	(Not available)	Depositor
R_{sym}	0.09	Depositor
$\langle I/\sigma(I) \rangle$ ¹	4.60 (at 1.85Å)	Xtriage
Refinement program	CNS 1.1	Depositor
R, R_{free}	0.195 , 0.231 0.195 , 0.231	Depositor DCC
R_{free} test set	13558 reflections (4.96%)	wwPDB-VP
Wilson B-factor (Å ²)	23.5	Xtriage
Anisotropy	0.352	Xtriage
Bulk solvent k_{sol} (e/Å ³), B_{sol} (Å ²)	0.38 , 59.4	EDS
L-test for twinning ²	$\langle L \rangle = 0.54$, $\langle L^2 \rangle = 0.38$	Xtriage
Estimated twinning fraction	No twinning to report.	Xtriage
F_o, F_c correlation	0.96	EDS
Total number of atoms	23521	wwPDB-VP
Average B, all atoms (Å ²)	27.0	wwPDB-VP

Xtriage's analysis on translational NCS is as follows: *The largest off-origin peak in the Patterson function is 2.97% of the height of the origin peak. No significant pseudotranslation is detected.*

¹Intensities estimated from amplitudes.

²Theoretical values of $\langle |L| \rangle$, $\langle L^2 \rangle$ for acentric reflections are 0.5, 0.333 respectively for untwinned datasets, and 0.375, 0.2 for perfectly twinned datasets.

5 Model quality [i](#)

5.1 Standard geometry [i](#)

Bond lengths and bond angles in the following residue types are not validated in this section: SO4, OAA, CMX

The Z score for a bond length (or angle) is the number of standard deviations the observed value is removed from the expected value. A bond length (or angle) with $|Z| > 5$ is considered an outlier worth inspection. RMSZ is the root-mean-square of all Z scores of the bond lengths (or angles).

Mol	Chain	Bond lengths		Bond angles	
		RMSZ	# Z >5	RMSZ	# Z >5
1	A	0.39	0/3332	0.68	0/4517
1	B	0.39	0/3388	0.69	1/4596 (0.0%)
1	C	0.39	0/3391	0.69	0/4601
1	D	0.39	0/3327	0.70	0/4510
1	E	0.40	0/3391	0.68	0/4601
1	F	0.39	0/3348	0.68	0/4539
All	All	0.39	0/20177	0.68	1/27364 (0.0%)

There are no bond length outliers.

All (1) bond angle outliers are listed below:

Mol	Chain	Res	Type	Atoms	Z	Observed(°)	Ideal(°)
1	B	162	PRO	N-CA-CB	5.19	109.53	103.30

There are no chirality outliers.

There are no planarity outliers.

5.2 Too-close contacts [i](#)

In the following table, the Non-H and H(model) columns list the number of non-hydrogen atoms and hydrogen atoms in the chain respectively. The H(added) column lists the number of hydrogen atoms added and optimized by MolProbity. The Clashes column lists the number of clashes within the asymmetric unit, whereas Symm-Clashes lists symmetry related clashes.

Mol	Chain	Non-H	H(model)	H(added)	Clashes	Symm-Clashes
1	A	3258	0	3271	53	0
1	B	3313	0	3319	40	0
1	C	3315	0	3325	49	0
1	D	3253	0	3266	48	0

Continued on next page...

Continued from previous page...

Mol	Chain	Non-H	H(model)	H(added)	Clashes	Symm-Clashes
1	E	3315	0	3325	61	0
1	F	3273	0	3283	59	0
2	A	9	0	2	0	0
2	B	9	0	2	0	0
2	C	9	0	2	0	0
2	D	9	0	2	0	0
2	E	9	0	2	0	0
2	F	9	0	2	0	0
3	A	35	0	0	0	0
3	B	45	0	0	2	0
3	C	30	0	0	4	0
3	D	30	0	0	0	0
3	E	35	0	0	1	0
3	F	30	0	0	1	0
4	A	51	0	33	0	0
4	B	51	0	33	0	0
4	C	51	0	33	2	0
4	D	51	0	33	0	0
4	E	51	0	33	1	0
4	F	51	0	33	1	0
5	A	561	0	0	8	1
5	B	555	0	0	9	0
5	C	526	0	0	5	1
5	D	499	0	0	5	0
5	E	547	0	0	10	0
5	F	541	0	0	13	2
All	All	23521	0	19999	282	2

The all-atom clashscore is defined as the number of clashes found per 1000 atoms (including hydrogen atoms). The all-atom clashscore for this structure is 7.

The worst 5 of 282 close contacts within the same asymmetric unit are listed below, sorted by their clash magnitude.

Atom-1	Atom-2	Interatomic distance (Å)	Clash overlap (Å)
1:A:90:TYR:CE1	1:A:231:LEU:HB3	1.88	1.08
1:E:159:ILE:HB	1:E:165:ARG:HH21	1.18	1.02
1:F:90:TYR:CE2	1:F:94:ILE:HD11	1.94	1.01
1:F:280:LEU:HD11	1:F:344:LEU:HD21	1.39	0.99
1:E:159:ILE:HG22	5:E:5226:HOH:O	1.66	0.95

All (2) symmetry-related close contacts are listed below. The label for Atom-2 includes the sym-

metry operator and encoded unit-cell translations to be applied.

Atom-1	Atom-2	Interatomic distance (Å)	Clash overlap (Å)
5:C:5541:HOH:O	5:F:5575:HOH:O[2_554]	1.99	0.21
5:A:5597:HOH:O	5:F:5226:HOH:O[4_445]	2.19	0.01

5.3 Torsion angles [i](#)

5.3.1 Protein backbone [i](#)

In the following table, the Percentiles column shows the percent Ramachandran outliers of the chain as a percentile score with respect to all X-ray entries followed by that with respect to entries of similar resolution.

The Analysed column shows the number of residues for which the backbone conformation was analysed, and the total number of residues.

Mol	Chain	Analysed	Favoured	Allowed	Outliers	Percentiles	
1	A	414/436 (95%)	407 (98%)	7 (2%)	0	100	100
1	B	424/436 (97%)	416 (98%)	8 (2%)	0	100	100
1	C	424/436 (97%)	416 (98%)	8 (2%)	0	100	100
1	D	413/436 (95%)	403 (98%)	10 (2%)	0	100	100
1	E	424/436 (97%)	413 (97%)	10 (2%)	1 (0%)	47	33
1	F	416/436 (95%)	406 (98%)	8 (2%)	2 (0%)	29	15
All	All	2515/2616 (96%)	2461 (98%)	51 (2%)	3 (0%)	51	36

All (3) Ramachandran outliers are listed below:

Mol	Chain	Res	Type
1	E	160	ALA
1	F	303	ASN
1	F	302	LYS

5.3.2 Protein sidechains [i](#)

In the following table, the Percentiles column shows the percent sidechain outliers of the chain as a percentile score with respect to all X-ray entries followed by that with respect to entries of similar resolution.

The Analysed column shows the number of residues for which the sidechain conformation was analysed, and the total number of residues.

Mol	Chain	Analysed	Rotameric	Outliers	Percentiles	
1	A	340/354 (96%)	333 (98%)	7 (2%)	53	38
1	B	345/354 (98%)	335 (97%)	10 (3%)	42	26
1	C	346/354 (98%)	334 (96%)	12 (4%)	36	18
1	D	340/354 (96%)	331 (97%)	9 (3%)	46	30
1	E	346/354 (98%)	336 (97%)	10 (3%)	42	26
1	F	342/354 (97%)	332 (97%)	10 (3%)	42	26
All	All	2059/2124 (97%)	2001 (97%)	58 (3%)	43	27

5 of 58 residues with a non-rotameric sidechain are listed below:

Mol	Chain	Res	Type
1	C	344	LEU
1	D	248	LEU
1	F	272	HIS
1	C	391	LEU
1	D	21	SER

Some sidechains can be flipped to improve hydrogen bonding and reduce clashes. 5 of 27 such sidechains are listed below:

Mol	Chain	Res	Type
1	C	298	GLN
1	D	239	GLN
1	F	204	ASN
1	D	83	GLN
1	B	83	GLN

5.3.3 RNA ⓘ

There are no RNA molecules in this entry.

5.4 Non-standard residues in protein, DNA, RNA chains ⓘ

There are no non-standard protein/DNA/RNA residues in this entry.

5.5 Carbohydrates ⓘ

There are no carbohydrates in this entry.

5.6 Ligand geometry ⓘ

53 ligands are modelled in this entry.

In the following table, the Counts columns list the number of bonds (or angles) for which Mogul statistics could be retrieved, the number of bonds (or angles) that are observed in the model and the number of bonds (or angles) that are defined in the Chemical Component Dictionary. The Link column lists molecule types, if any, to which the group is linked. The Z score for a bond length (or angle) is the number of standard deviations the observed value is removed from the expected value. A bond length (or angle) with $|Z| > 2$ is considered an outlier worth inspection. RMSZ is the root-mean-square of all Z scores of the bond lengths (or angles).

Mol	Type	Chain	Res	Link	Bond lengths			Bond angles		
					Counts	RMSZ	# Z > 2	Counts	RMSZ	# Z > 2
3	SO4	B	5053	-	4,4,4	0.64	0	6,6,6	0.06	0
3	SO4	B	5030	-	4,4,4	0.63	0	6,6,6	0.07	0
4	CMX	C	5003	-	42,53,53	1.07	3 (7%)	53,79,79	1.06	2 (3%)
3	SO4	D	5032	-	4,4,4	0.63	0	6,6,6	0.07	0
3	SO4	B	5016	-	4,4,4	0.63	0	6,6,6	0.05	0
3	SO4	F	5022	-	4,4,4	0.63	0	6,6,6	0.04	0
3	SO4	B	5017	-	4,4,4	0.63	0	6,6,6	0.10	0
3	SO4	E	5025	-	4,4,4	0.62	0	6,6,6	0.05	0
3	SO4	A	5029	-	4,4,4	0.63	0	6,6,6	0.05	0
3	SO4	C	5041	-	4,4,4	0.63	0	6,6,6	0.17	0
3	SO4	B	5013	-	4,4,4	0.63	0	6,6,6	0.05	0
3	SO4	F	5038	-	4,4,4	0.61	0	6,6,6	0.09	0
3	SO4	A	5040	-	4,4,4	0.64	0	6,6,6	0.09	0
3	SO4	A	5015	-	4,4,4	0.62	0	6,6,6	0.04	0
3	SO4	C	5020	-	4,4,4	0.63	0	6,6,6	0.06	0
3	SO4	B	5045	-	4,4,4	0.63	0	6,6,6	0.07	0
3	SO4	B	5048	-	4,4,4	0.63	0	6,6,6	0.06	0
2	OAA	E	5011	-	2,8,8	1.50	0	2,10,10	1.84	1 (50%)
3	SO4	E	5050	-	4,4,4	0.63	0	6,6,6	0.08	0
3	SO4	F	5051	-	4,4,4	0.63	0	6,6,6	0.07	0
2	OAA	C	5009	-	2,8,8	1.68	1 (50%)	2,10,10	1.38	0
2	OAA	D	5010	-	2,8,8	1.58	1 (50%)	2,10,10	1.90	1 (50%)
3	SO4	A	5035	-	4,4,4	0.63	0	6,6,6	0.07	0
2	OAA	A	5007	-	2,8,8	1.57	1 (50%)	2,10,10	1.88	1 (50%)
4	CMX	E	5005	-	42,53,53	1.06	3 (7%)	53,79,79	1.04	3 (5%)
2	OAA	B	5008	-	2,8,8	1.57	1 (50%)	2,10,10	1.96	1 (50%)
3	SO4	E	5033	-	4,4,4	0.62	0	6,6,6	0.06	0
2	OAA	F	5012	-	2,8,8	1.52	0	2,10,10	1.90	1 (50%)
3	SO4	E	5023	-	4,4,4	0.62	0	6,6,6	0.07	0
3	SO4	D	5028	-	4,4,4	0.63	0	6,6,6	0.05	0

Mol	Type	Chain	Res	Link	Bond lengths			Bond angles		
					Counts	RMSZ	# Z > 2	Counts	RMSZ	# Z > 2
4	CMX	D	5004	-	42,53,53	1.06	3 (7%)	53,79,79	1.01	2 (3%)
3	SO4	E	5037	-	4,4,4	0.63	0	6,6,6	0.07	0
3	SO4	A	5047	1	4,4,4	0.63	0	6,6,6	0.15	0
3	SO4	A	5014	-	4,4,4	0.62	0	6,6,6	0.06	0
3	SO4	F	5034	-	4,4,4	0.62	0	6,6,6	0.05	0
3	SO4	C	5046	-	4,4,4	0.63	0	6,6,6	0.06	0
3	SO4	D	5042	-	4,4,4	0.63	0	6,6,6	0.10	0
3	SO4	B	5039	-	4,4,4	0.63	0	6,6,6	0.09	0
4	CMX	A	5001	-	42,53,53	1.05	3 (7%)	53,79,79	1.03	2 (3%)
3	SO4	C	5031	-	4,4,4	0.63	0	6,6,6	0.05	0
4	CMX	B	5002	-	42,53,53	1.06	3 (7%)	53,79,79	1.02	2 (3%)
3	SO4	F	5044	-	4,4,4	0.64	0	6,6,6	0.09	0
3	SO4	C	5019	-	4,4,4	0.63	0	6,6,6	0.07	0
3	SO4	E	5043	-	4,4,4	0.65	0	6,6,6	0.07	0
3	SO4	B	5036	-	4,4,4	0.62	0	6,6,6	0.08	0
3	SO4	F	5026	-	4,4,4	0.63	0	6,6,6	0.06	0
3	SO4	C	5027	-	4,4,4	0.62	0	6,6,6	0.05	0
3	SO4	D	5049	-	4,4,4	0.63	0	6,6,6	0.05	0
3	SO4	A	5052	-	4,4,4	0.64	0	6,6,6	0.07	0
3	SO4	D	5021	-	4,4,4	0.62	0	6,6,6	0.07	0
3	SO4	D	5018	-	4,4,4	0.63	0	6,6,6	0.07	0
4	CMX	F	5006	-	42,53,53	1.06	3 (7%)	53,79,79	1.05	2 (3%)
3	SO4	E	5024	-	4,4,4	0.62	0	6,6,6	0.07	0

In the following table, the Chirals column lists the number of chiral outliers, the number of chiral centers analysed, the number of these observed in the model and the number defined in the Chemical Component Dictionary. Similar counts are reported in the Torsion and Rings columns. '-' means no outliers of that kind were identified.

Mol	Type	Chain	Res	Link	Chirals	Torsions	Rings
2	OAA	F	5012	-	-	2/2/8/8	-
4	CMX	F	5006	-	-	4/45/67/67	0/3/3/3
2	OAA	E	5011	-	-	2/2/8/8	-
4	CMX	D	5004	-	-	4/45/67/67	0/3/3/3
2	OAA	C	5009	-	-	2/2/8/8	-
2	OAA	D	5010	-	-	2/2/8/8	-
2	OAA	A	5007	-	-	2/2/8/8	-
4	CMX	C	5003	-	-	3/45/67/67	0/3/3/3
4	CMX	A	5001	-	-	4/45/67/67	0/3/3/3

Continued on next page...

Continued from previous page...

Mol	Type	Chain	Res	Link	Chirals	Torsions	Rings
2	OAA	B	5008	-	-	2/2/8/8	-
4	CMX	B	5002	-	-	4/45/67/67	0/3/3/3
4	CMX	E	5005	-	-	4/45/67/67	0/3/3/3

The worst 5 of 22 bond length outliers are listed below:

Mol	Chain	Res	Type	Atoms	Z	Observed(Å)	Ideal(Å)
4	B	5002	CMX	P2A-O4A	2.94	1.61	1.50
4	C	5003	CMX	P2A-O4A	2.94	1.61	1.50
4	A	5001	CMX	P1A-O1A	2.93	1.61	1.50
4	E	5005	CMX	P1A-O1A	2.92	1.61	1.50
4	D	5004	CMX	P2A-O4A	2.92	1.61	1.50

The worst 5 of 18 bond angle outliers are listed below:

Mol	Chain	Res	Type	Atoms	Z	Observed(°)	Ideal(°)
4	F	5006	CMX	N3A-C2A-N1A	-4.51	121.62	128.68
4	C	5003	CMX	N3A-C2A-N1A	-4.46	121.70	128.68
4	B	5002	CMX	N3A-C2A-N1A	-4.44	121.75	128.68
4	D	5004	CMX	N3A-C2A-N1A	-4.39	121.81	128.68
4	A	5001	CMX	N3A-C2A-N1A	-4.38	121.83	128.68

There are no chirality outliers.

5 of 35 torsion outliers are listed below:

Mol	Chain	Res	Type	Atoms
4	C	5003	CMX	C5B-O5B-P1A-O1A
4	C	5003	CMX	C5B-O5B-P1A-O2A
4	E	5005	CMX	C5B-O5B-P1A-O1A
4	E	5005	CMX	C5B-O5B-P1A-O2A
4	D	5004	CMX	C5B-O5B-P1A-O1A

There are no ring outliers.

9 monomers are involved in 12 short contacts:

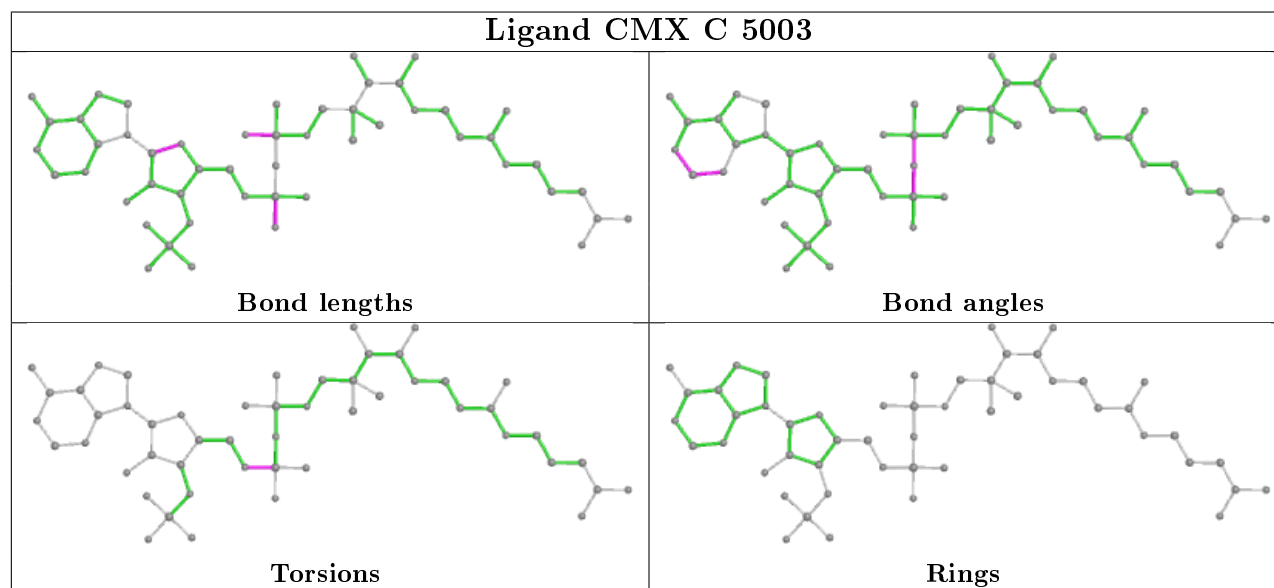
Mol	Chain	Res	Type	Clashes	Symm-Clashes
4	C	5003	CMX	2	0
3	C	5041	SO4	3	0
3	F	5038	SO4	1	0
3	B	5045	SO4	1	0

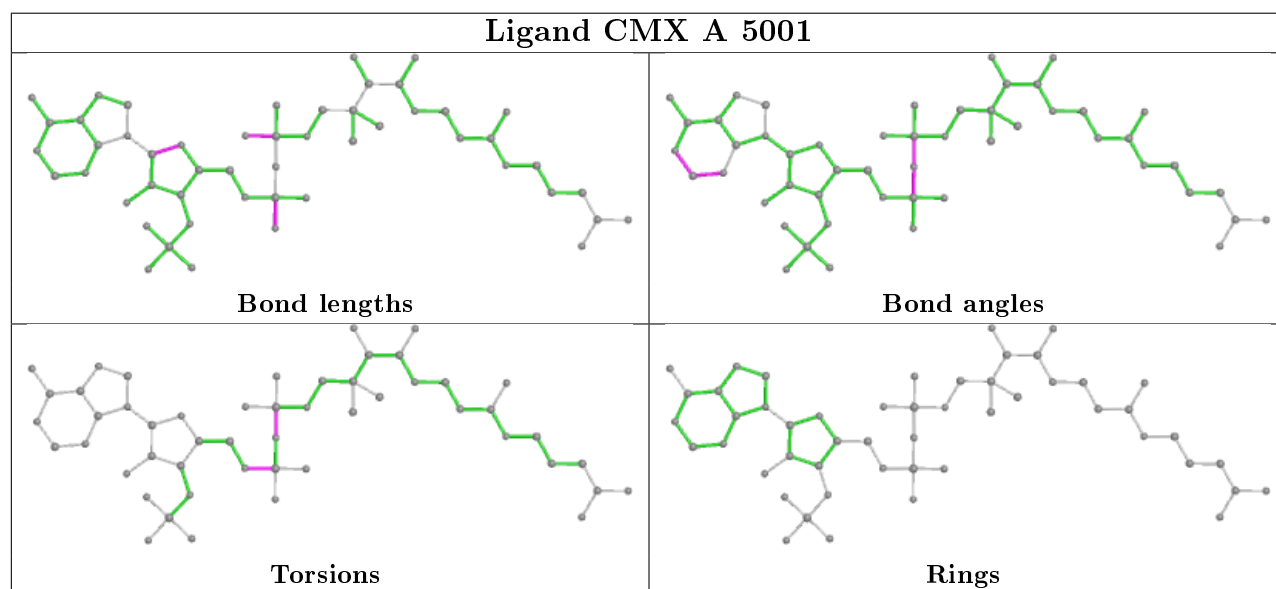
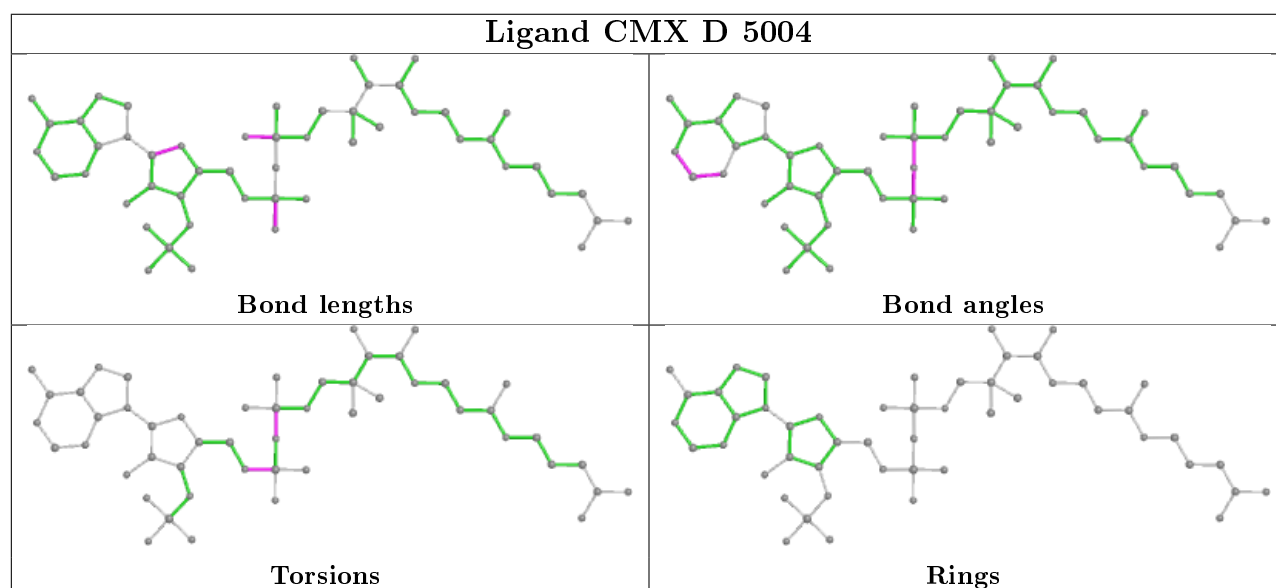
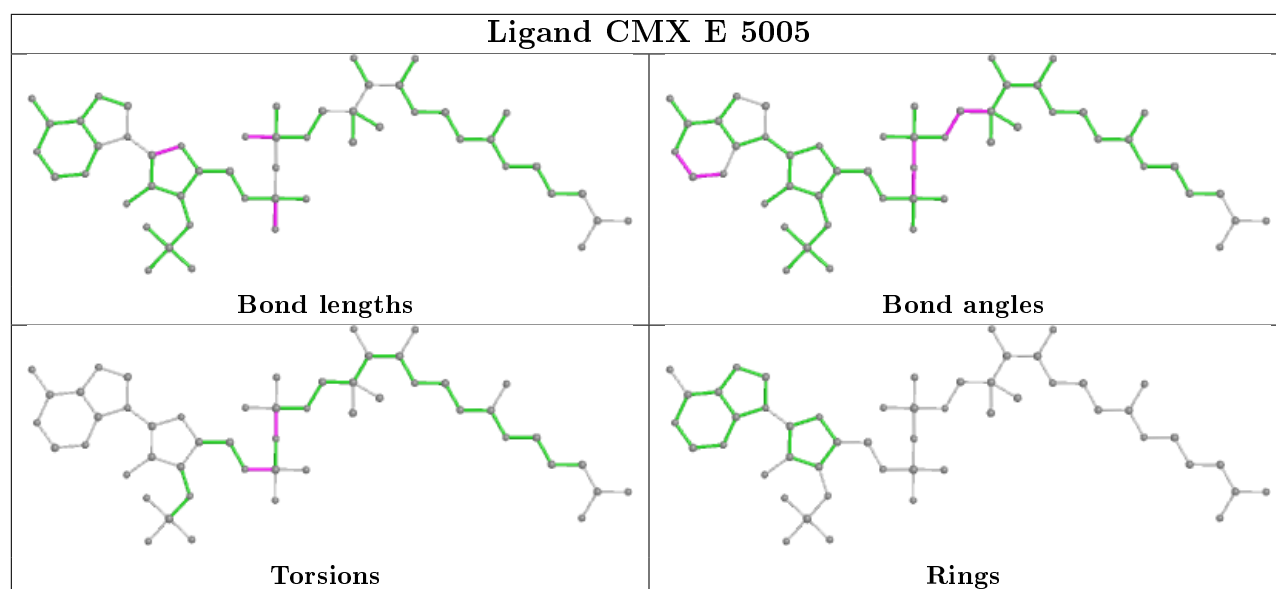
Continued on next page...

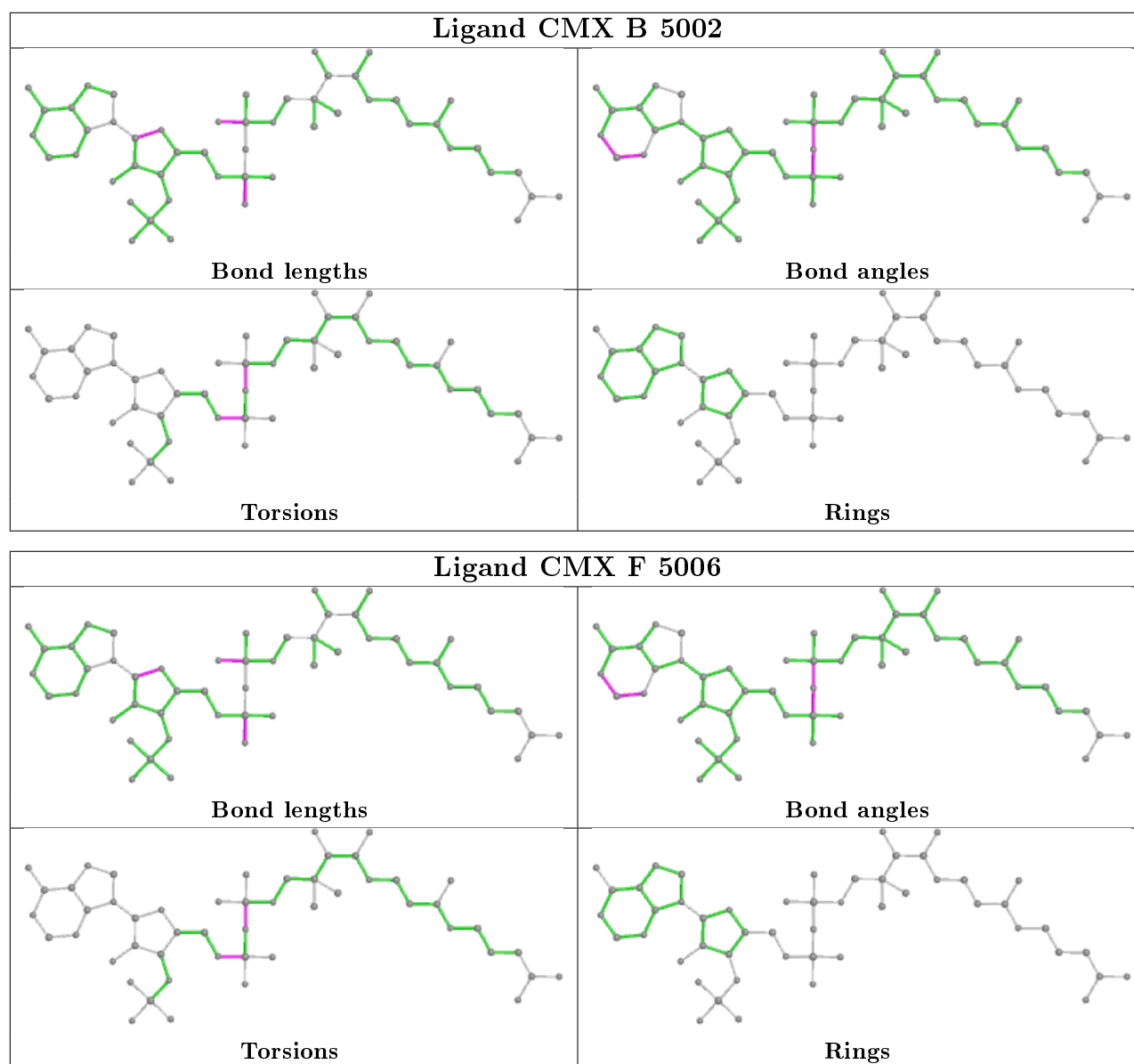
Continued from previous page...

Mol	Chain	Res	Type	Clashes	Symm-Clashes
3	B	5048	SO4	1	0
3	E	5050	SO4	1	0
4	E	5005	CMX	1	0
3	C	5046	SO4	1	0
4	F	5006	CMX	1	0

The following is a two-dimensional graphical depiction of Mogul quality analysis of bond lengths, bond angles, torsion angles, and ring geometry for all instances of the Ligand of Interest. In addition, ligands with molecular weight > 250 and outliers as shown on the validation Tables will also be included. For torsion angles, if less than 5% of the Mogul distribution of torsion angles is within 10 degrees of the torsion angle in question, then that torsion angle is considered an outlier. Any bond that is central to one or more torsion angles identified as an outlier by Mogul will be highlighted in the graph. For rings, the root-mean-square deviation (RMSD) between the ring in question and similar rings identified by Mogul is calculated over all ring torsion angles. If the average RMSD is greater than 60 degrees and the minimal RMSD between the ring in question and any Mogul-identified rings is also greater than 60 degrees, then that ring is considered an outlier. The outliers are highlighted in purple. The color gray indicates Mogul did not find sufficient equivalents in the CSD to analyse the geometry.







5.7 Other polymers [i](#)

There are no such residues in this entry.

5.8 Polymer linkage issues [i](#)

There are no chain breaks in this entry.

6 Fit of model and data [i](#)

6.1 Protein, DNA and RNA chains [i](#)

In the following table, the column labelled ‘#RSRZ> 2’ contains the number (and percentage) of RSRZ outliers, followed by percent RSRZ outliers for the chain as percentile scores relative to all X-ray entries and entries of similar resolution. The OWAB column contains the minimum, median, 95th percentile and maximum values of the occupancy-weighted average B-factor per residue. The column labelled ‘Q< 0.9’ lists the number of (and percentage) of residues with an average occupancy less than 0.9.

Mol	Chain	Analysed	<RSRZ>	#RSRZ>2	OWAB(Å ²)	Q<0.9
1	A	418/436 (95%)	0.15	19 (4%) 33 32	15, 22, 39, 57	0
1	B	426/436 (97%)	0.27	29 (6%) 17 16	16, 23, 45, 59	0
1	C	426/436 (97%)	0.23	21 (4%) 29 28	16, 23, 47, 60	0
1	D	417/436 (95%)	0.37	39 (9%) 8 8	16, 24, 49, 66	0
1	E	426/436 (97%)	0.31	29 (6%) 17 16	15, 22, 46, 63	0
1	F	420/436 (96%)	0.23	25 (5%) 21 21	15, 23, 43, 58	0
All	All	2533/2616 (96%)	0.26	162 (6%) 19 18	15, 23, 46, 66	0

The worst 5 of 162 RSRZ outliers are listed below:

Mol	Chain	Res	Type	RSRZ
1	E	159	ILE	13.9
1	E	90	TYR	7.8
1	B	161	ILE	7.4
1	B	303	ASN	6.9
1	F	303	ASN	6.9

6.2 Non-standard residues in protein, DNA, RNA chains [i](#)

There are no non-standard protein/DNA/RNA residues in this entry.

6.3 Carbohydrates [i](#)

There are no carbohydrates in this entry.

6.4 Ligands ⓘ

In the following table, the Atoms column lists the number of modelled atoms in the group and the number defined in the chemical component dictionary. The B-factors column lists the minimum, median, 95th percentile and maximum values of B factors of atoms in the group. The column labelled 'Q< 0.9' lists the number of atoms with occupancy less than 0.9.

Mol	Type	Chain	Res	Atoms	RSCC	RSR	B-factors(Å ²)	Q<0.9
3	SO4	E	5043	5/5	0.57	0.46	51,54,58,59	0
3	SO4	D	5049	5/5	0.59	0.33	72,73,74,75	0
3	SO4	A	5047	5/5	0.64	0.41	54,56,59,60	0
3	SO4	C	5041	5/5	0.68	0.44	61,62,63,64	0
3	SO4	B	5039	5/5	0.69	0.38	53,54,57,58	0
3	SO4	E	5037	5/5	0.71	0.46	55,58,59,59	0
3	SO4	A	5052	5/5	0.73	0.51	57,58,60,61	0
3	SO4	B	5053	5/5	0.76	0.41	55,57,59,59	0
3	SO4	B	5048	5/5	0.76	0.40	58,60,62,62	0
3	SO4	F	5044	5/5	0.76	0.44	56,57,58,59	0
3	SO4	F	5051	5/5	0.78	0.43	50,53,55,56	0
3	SO4	A	5040	5/5	0.79	0.41	54,54,57,57	0
3	SO4	E	5050	5/5	0.81	0.34	59,59,60,60	0
3	SO4	D	5042	5/5	0.81	0.43	55,56,57,57	0
3	SO4	F	5038	5/5	0.82	0.51	61,61,62,64	0
3	SO4	B	5045	5/5	0.83	0.42	58,58,59,62	0
3	SO4	A	5035	5/5	0.83	0.45	59,60,60,63	0
3	SO4	C	5046	5/5	0.84	0.42	62,63,64,65	0
3	SO4	B	5036	5/5	0.85	0.39	52,55,56,56	0
3	SO4	C	5027	5/5	0.89	0.27	69,70,71,71	0
3	SO4	C	5031	5/5	0.90	0.23	63,65,66,66	0
3	SO4	A	5029	5/5	0.91	0.19	52,52,54,55	0
4	CMX	B	5002	51/51	0.93	0.11	19,26,41,43	0
4	CMX	E	5005	51/51	0.93	0.10	17,22,38,41	0
4	CMX	C	5003	51/51	0.93	0.10	18,25,39,42	0
4	CMX	F	5006	51/51	0.93	0.11	18,22,37,40	0
3	SO4	F	5034	5/5	0.94	0.18	51,52,53,54	0
3	SO4	D	5032	5/5	0.94	0.20	45,47,49,50	0
3	SO4	B	5030	5/5	0.94	0.14	43,43,46,48	0
4	CMX	D	5004	51/51	0.95	0.10	20,25,43,48	0
4	CMX	A	5001	51/51	0.95	0.10	16,23,41,42	0
3	SO4	E	5033	5/5	0.96	0.18	46,47,47,50	0
3	SO4	D	5028	5/5	0.96	0.18	58,59,59,60	0
2	OAA	F	5012	9/9	0.97	0.11	16,18,22,23	0
2	OAA	A	5007	9/9	0.97	0.14	19,20,24,24	0
2	OAA	C	5009	9/9	0.97	0.13	19,20,22,23	0

Continued on next page...

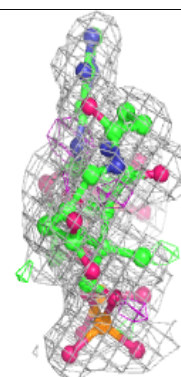
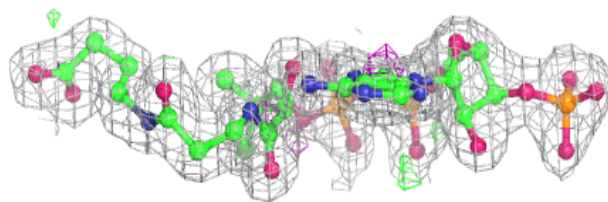
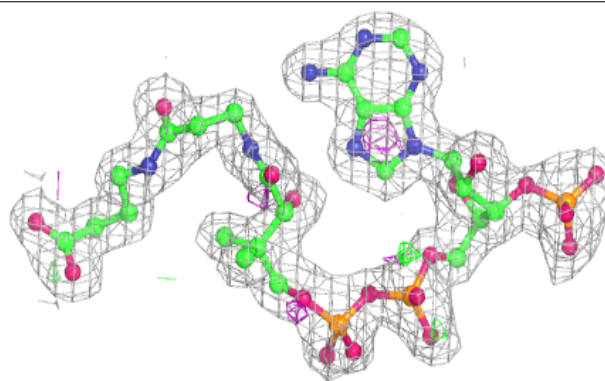
Continued from previous page...

Mol	Type	Chain	Res	Atoms	RSCC	RSR	B-factors(\AA^2)	Q<0.9
2	OAA	B	5008	9/9	0.97	0.12	17,20,22,23	0
2	OAA	D	5010	9/9	0.97	0.12	20,21,24,26	0
3	SO4	B	5017	5/5	0.97	0.11	36,39,40,41	0
3	SO4	A	5015	5/5	0.98	0.07	26,27,29,29	0
3	SO4	F	5022	5/5	0.98	0.08	23,23,25,29	0
3	SO4	E	5025	5/5	0.98	0.07	24,26,29,31	0
2	OAA	E	5011	9/9	0.98	0.14	16,18,23,23	0
3	SO4	E	5024	5/5	0.98	0.18	42,43,44,46	0
3	SO4	B	5016	5/5	0.99	0.06	22,23,24,30	0
3	SO4	E	5023	5/5	0.99	0.07	23,27,29,29	0
3	SO4	A	5014	5/5	0.99	0.05	25,28,32,33	0
3	SO4	D	5018	5/5	0.99	0.09	28,28,31,31	0
3	SO4	C	5020	5/5	0.99	0.09	27,30,31,33	0
3	SO4	B	5013	5/5	0.99	0.04	24,25,26,30	0
3	SO4	D	5021	5/5	0.99	0.06	26,30,32,34	0
3	SO4	F	5026	5/5	0.99	0.06	25,29,31,32	0
3	SO4	C	5019	5/5	0.99	0.06	26,26,30,30	0

The following is a graphical depiction of the model fit to experimental electron density of all instances of the Ligand of Interest. In addition, ligands with molecular weight > 250 and outliers as shown on the geometry validation Tables will also be included. Each fit is shown from different orientation to approximate a three-dimensional view.

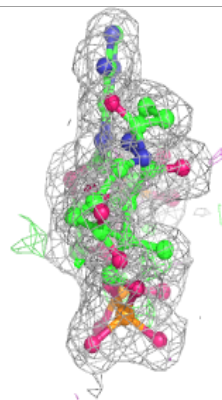
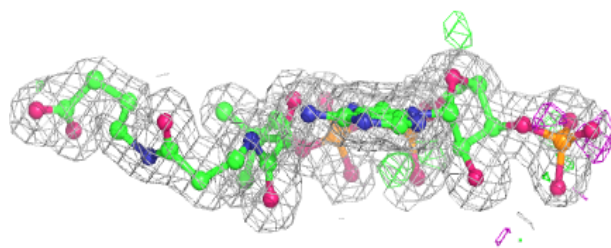
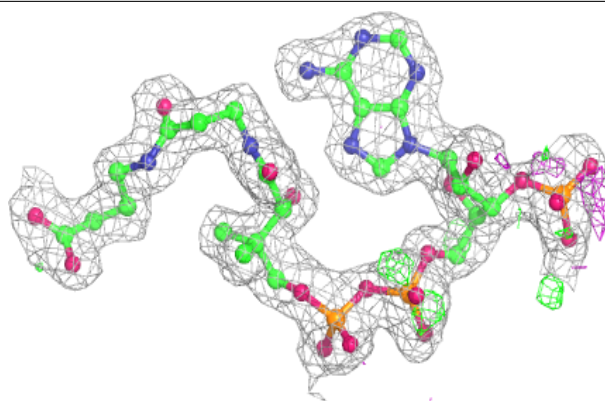
Electron density around CMX B 5002:

2mF_o-DF_c (at 0.7 rmsd) in gray
mF_o-DF_c (at 3 rmsd) in purple (negative)
and green (positive)

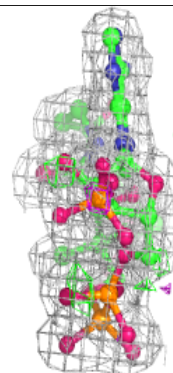
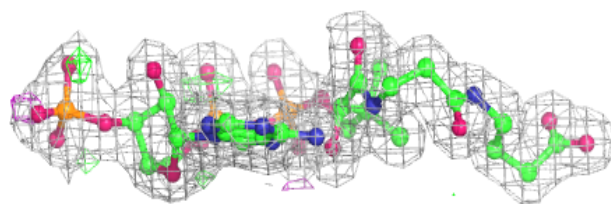
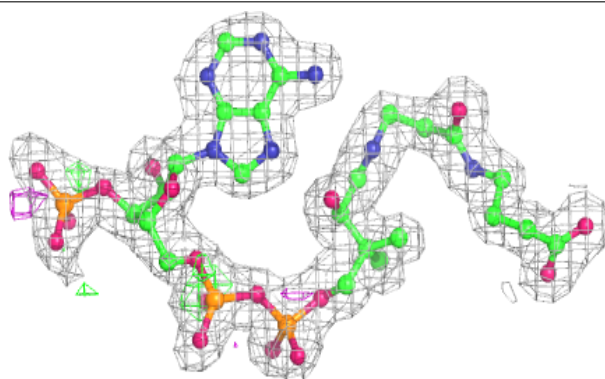


Electron density around CMX E 5005:

$2mF_o-DF_c$ (at 0.7 rmsd) in gray
 mF_o-DF_c (at 3 rmsd) in purple (negative)
and green (positive)

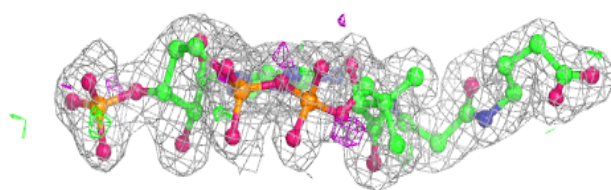
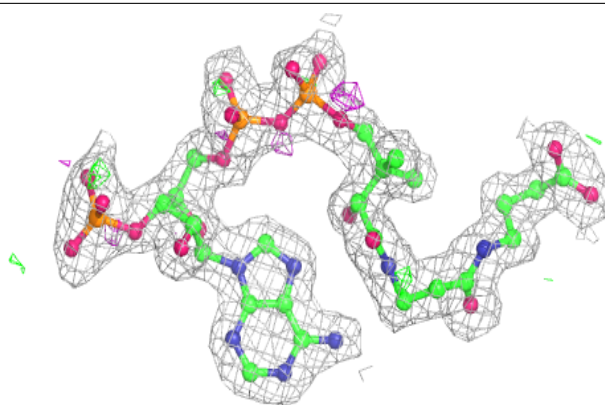
**Electron density around CMX C 5003:**

$2mF_o-DF_c$ (at 0.7 rmsd) in gray
 mF_o-DF_c (at 3 rmsd) in purple (negative)
and green (positive)

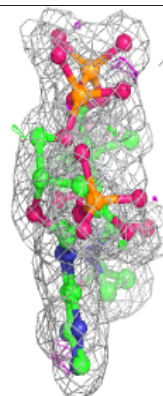
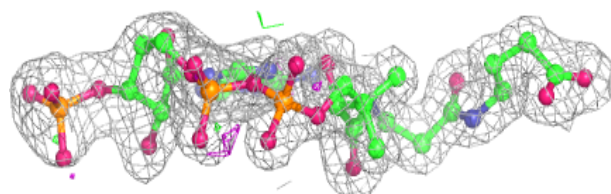
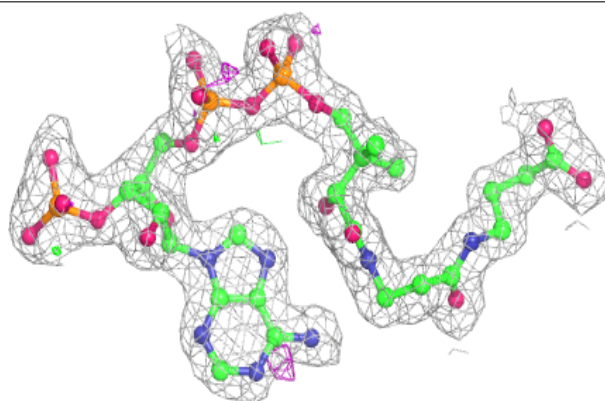


Electron density around CMX F 5006:

$2mF_o-DF_c$ (at 0.7 rmsd) in gray
 mF_o-DF_c (at 3 rmsd) in purple (negative)
and green (positive)

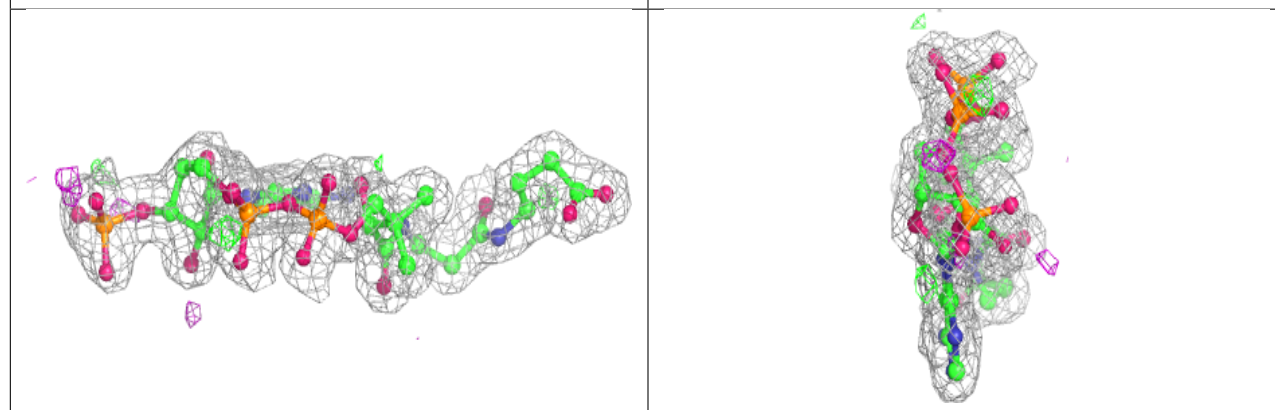
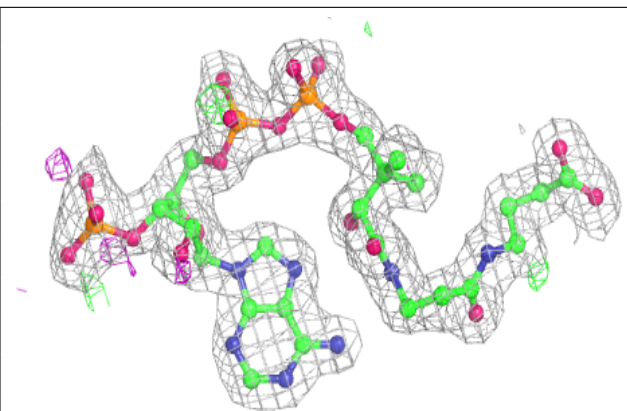
**Electron density around CMX D 5004:**

$2mF_o-DF_c$ (at 0.7 rmsd) in gray
 mF_o-DF_c (at 3 rmsd) in purple (negative)
and green (positive)



Electron density around CMX A 5001:

$2mF_o - DF_c$ (at 0.7 rmsd) in gray
 $mF_o - DF_c$ (at 3 rmsd) in purple (negative)
and green (positive)



6.5 Other polymers [i](#)

There are no such residues in this entry.