



# Full wwPDB X-ray Structure Validation Report ⓘ

May 17, 2020 – 10:25 am BST

PDB ID : 6H4R  
Title : Crystal structure of human KDM4A in complex with compound 17f  
Authors : Le Bihan, Y.V.; van Montfort, R.L.M.  
Deposited on : 2018-07-23  
Resolution : 2.14 Å(reported)

This is a Full wwPDB X-ray Structure Validation Report for a publicly released PDB entry.

We welcome your comments at [validation@mail.wwpdb.org](mailto:validation@mail.wwpdb.org)

A user guide is available at

<https://www.wwpdb.org/validation/2017/XrayValidationReportHelp>

with specific help available everywhere you see the ⓘ symbol.

---

The following versions of software and data (see [references ⓘ](#)) were used in the production of this report:

MolProbity : 4.02b-467  
Mogul : 1.8.5 (274361), CSD as541be (2020)  
Xtriage (Phenix) : 1.13  
EDS : 2.11  
buster-report : 1.1.7 (2018)  
Percentile statistics : 20191225.v01 (using entries in the PDB archive December 25th 2019)  
Refmac : 5.8.0158  
CCP4 : 7.0.044 (Gargrove)  
Ideal geometry (proteins) : Engh & Huber (2001)  
Ideal geometry (DNA, RNA) : Parkinson et al. (1996)  
Validation Pipeline (wwPDB-VP) : 2.11

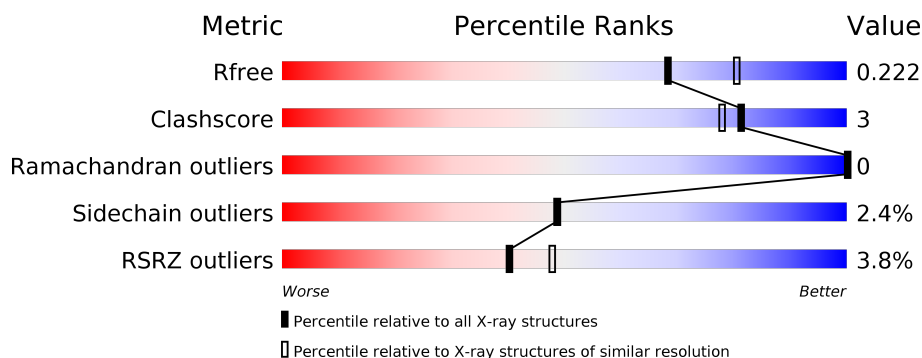
# 1 Overall quality at a glance

The following experimental techniques were used to determine the structure:

## *X-RAY DIFFRACTION*

The reported resolution of this entry is 2.14 Å.

Percentile scores (ranging between 0-100) for global validation metrics of the entry are shown in the following graphic. The table shows the number of entries on which the scores are based.



Metric	Whole archive (#Entries)	Similar resolution (#Entries, resolution range(Å))
$R_{free}$	130704	2523 (2.16-2.12)
Clashscore	141614	2653 (2.16-2.12)
Ramachandran outliers	138981	2618 (2.16-2.12)
Sidechain outliers	138945	2617 (2.16-2.12)
RSRZ outliers	127900	2485 (2.16-2.12)

The table below summarises the geometric issues observed across the polymeric chains and their fit to the electron density. The red, orange, yellow and green segments on the lower bar indicate the fraction of residues that contain outliers for  $\geq 3$ , 2, 1 and 0 types of geometric quality criteria respectively. A grey segment represents the fraction of residues that are not modelled. The numeric value for each fraction is indicated below the corresponding segment, with a dot representing fractions  $\leq 5\%$ . The upper red bar (where present) indicates the fraction of residues that have poor fit to the electron density. The numeric value is given above the bar.

Mol	Chain	Length	Quality of chain
1	A	360	<div> <div>5%</div> <div> <div></div> <div>86%</div> <div>9%</div> <div>5%</div> </div> </div>
1	B	360	<div> <div>%</div> <div> <div></div> <div>88%</div> <div>6%</div> <div>6%</div> </div> </div>
1	C	360	<div> <div>6%</div> <div> <div></div> <div>89%</div> <div>5%</div> <div>5%</div> </div> </div>
1	D	360	<div> <div>3%</div> <div> <div></div> <div>84%</div> <div>9%</div> <div>7%</div> </div> </div>

The following table lists non-polymeric compounds, carbohydrate monomers and non-standard residues in protein, DNA, RNA chains that are outliers for geometric or electron-density-fit crite-

ria:

Mol	Type	Chain	Res	Chirality	Geometry	Clashes	Electron density
5	GOL	A	405	-	-	X	-

## 2 Entry composition

There are 7 unique types of molecules in this entry. The entry contains 11733 atoms, of which 0 are hydrogens and 0 are deuteriums.

In the tables below, the ZeroOcc column contains the number of atoms modelled with zero occupancy, the AltConf column contains the number of residues with at least one atom in alternate conformation and the Trace column contains the number of residues modelled with at most 2 atoms.

- Molecule 1 is a protein called Lysine-specific demethylase 4A.

Mol	Chain	Residues	Atoms					ZeroOcc	AltConf	Trace
1	A	341	Total	C	N	O	S	0	6	1
			2729	1781	447	486	15			
1	B	340	Total	C	N	O	S	0	6	0
			2778	1801	464	497	16			
1	C	341	Total	C	N	O	S	0	1	0
			2645	1726	431	473	15			
1	D	334	Total	C	N	O	S	0	7	0
			2703	1759	446	484	14			

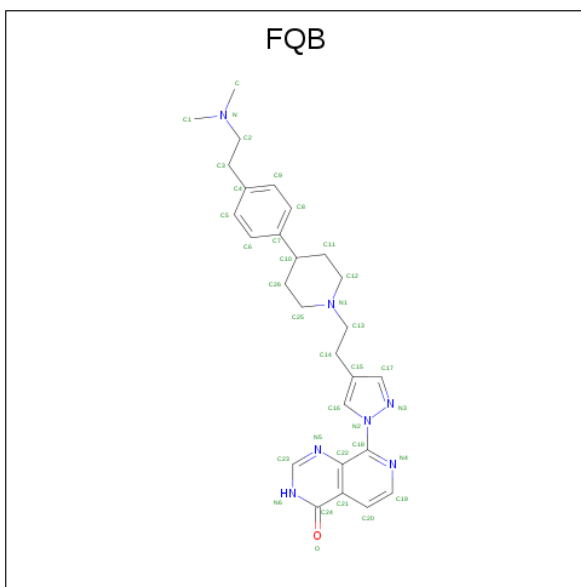
There are 4 discrepancies between the modelled and reference sequences:

Chain	Residue	Modelled	Actual	Comment	Reference
A	0	SER	-	expression tag	UNP O75164
B	0	SER	-	expression tag	UNP O75164
C	0	SER	-	expression tag	UNP O75164
D	0	SER	-	expression tag	UNP O75164

- Molecule 2 is ZINC ION (three-letter code: ZN) (formula: Zn).

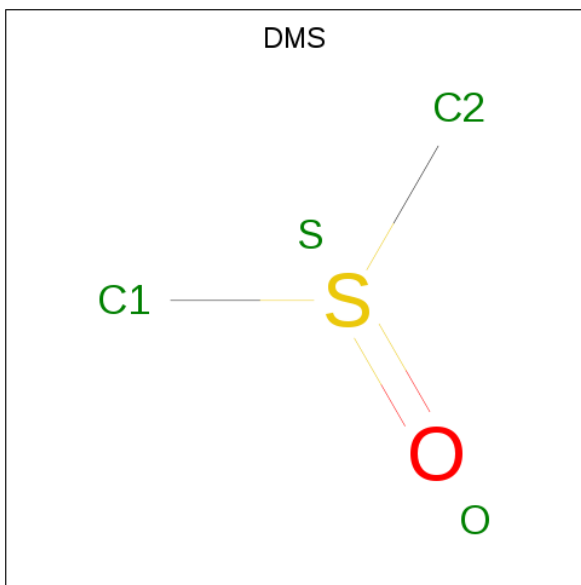
Mol	Chain	Residues	Atoms		ZeroOcc	AltConf
2	B	2	Total	Zn	0	0
			2	2		
2	A	2	Total	Zn	0	0
			2	2		
2	D	2	Total	Zn	0	0
			2	2		
2	C	2	Total	Zn	0	0
			2	2		

- Molecule 3 is 8-[4-[2-[4-[2-(dimethylamino)ethyl]phenyl]piperidin-1-yl]ethyl]pyrazol-1-yl]-3 {H}-pyrido[3,4-d]pyrimidin-4-one (three-letter code: FQB) (formula: C<sub>27</sub>H<sub>33</sub>N<sub>7</sub>O) (labeled as "Ligand of Interest" by author).



Mol	Chain	Residues	Atoms				ZeroOcc	AltConf
3	A	1	Total	C	N	O	0	0
			21	14	6	1		
3	B	1	Total	C	N	O	0	0
			35	27	7	1		
3	C	1	Total	C	N	O	0	0
			25	18	6	1		
3	D	1	Total	C	N	O	0	0
			25	18	6	1		

- Molecule 4 is DIMETHYL SULFOXIDE (three-letter code: DMS) (formula:  $C_2H_6OS$ ).



Mol	Chain	Residues	Atoms				ZeroOcc	AltConf
4	A	1	Total	C	O	S	0	0
			4	2	1	1		

- Molecule 5 is GLYCEROL (three-letter code: GOL) (formula:  $C_3H_8O_3$ ).



Mol	Chain	Residues	Atoms			ZeroOcc	AltConf
5	A	1	Total	C	O	0	0
			6	3	3		
5	B	1	Total	C	O	0	0
			6	3	3		

- Molecule 6 is CHLORIDE ION (three-letter code: CL) (formula: Cl).

Mol	Chain	Residues	Atoms		ZeroOcc	AltConf
6	C	1	Total	Cl	0	0
			1	1		

- Molecule 7 is water.

Mol	Chain	Residues	Atoms		ZeroOcc	AltConf
7	A	187	Total	O	0	0
			187	187		
7	B	232	Total	O	0	5
			237	237		
7	C	143	Total	O	0	1
			144	144		

*Continued on next page...*

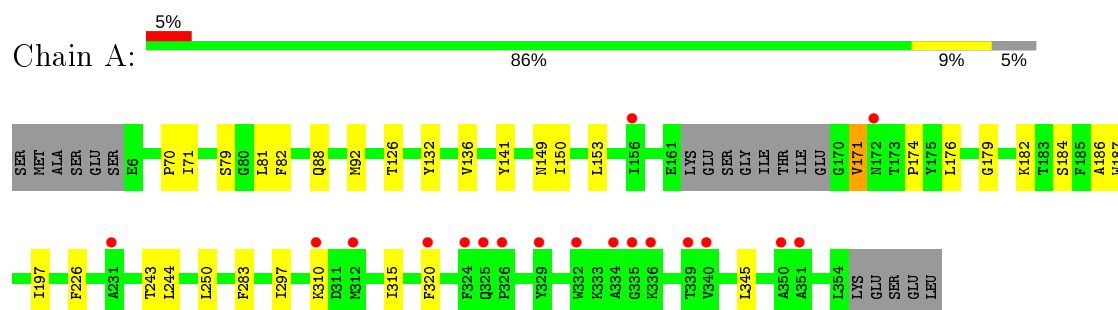
*Continued from previous page...*

Mol	Chain	Residues	Atoms		ZeroOcc	AltConf
7	D	179	Total	O	0	0
			179	179		

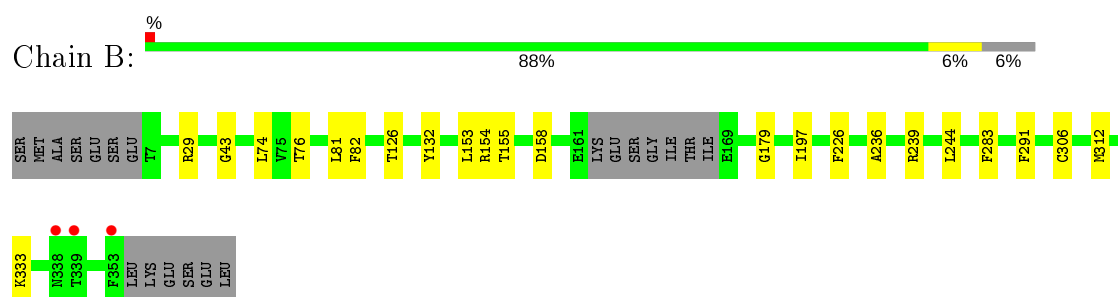
### 3 Residue-property plots [i](#)

These plots are drawn for all protein, RNA and DNA chains in the entry. The first graphic for a chain summarises the proportions of the various outlier classes displayed in the second graphic. The second graphic shows the sequence view annotated by issues in geometry and electron density. Residues are color-coded according to the number of geometric quality criteria for which they contain at least one outlier: green = 0, yellow = 1, orange = 2 and red = 3 or more. A red dot above a residue indicates a poor fit to the electron density ( $RSRZ > 2$ ). Stretches of 2 or more consecutive residues without any outlier are shown as a green connector. Residues present in the sample, but not in the model, are shown in grey.

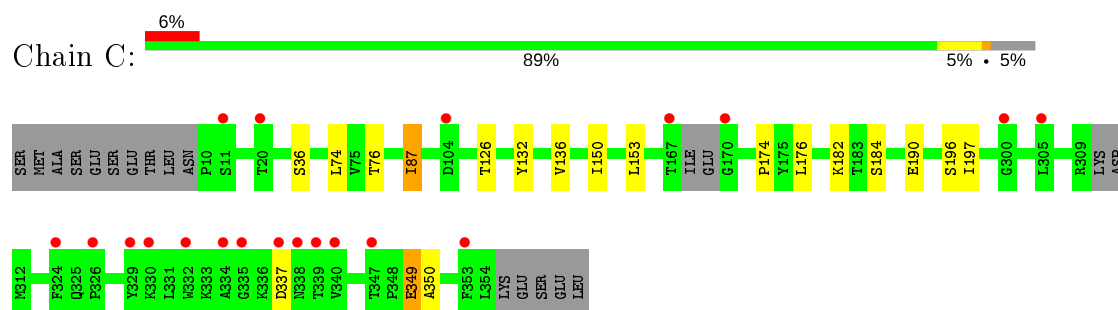
- Molecule 1: Lysine-specific demethylase 4A



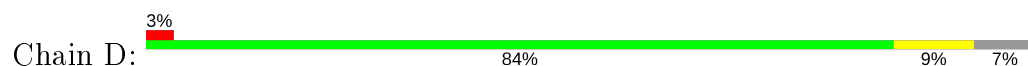
- Molecule 1: Lysine-specific demethylase 4A



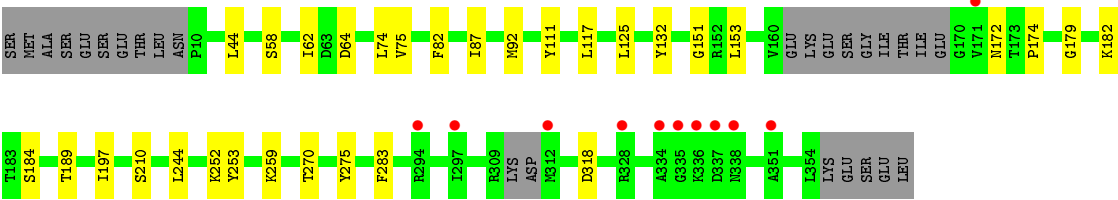
- Molecule 1: Lysine-specific demethylase 4A



- Molecule 1: Lysine-specific demethylase 4A







## 4 Data and refinement statistics

Property	Value	Source
Space group	P 1 21 1	Depositor
Cell constants a, b, c, $\alpha$ , $\beta$ , $\gamma$	58.11Å 101.47Å 142.12Å 90.00° 99.41° 90.00°	Depositor
Resolution (Å)	49.29 – 2.14 48.43 – 2.14	Depositor EDS
% Data completeness (in resolution range)	99.8 (49.29-2.14) 99.8 (48.43-2.14)	Depositor EDS
$R_{merge}$	0.13	Depositor
$R_{sym}$	(Not available)	Depositor
$\langle I/\sigma(I) \rangle$ <sup>1</sup>	1.72 (at 2.14Å)	Xtriage
Refinement program	BUSTER 2.10.3	Depositor
R, $R_{free}$	0.179 , 0.219 0.188 , 0.222	Depositor DCC
$R_{free}$ test set	4548 reflections (5.08%)	wwPDB-VP
Wilson B-factor (Å <sup>2</sup> )	42.6	Xtriage
Anisotropy	0.226	Xtriage
Bulk solvent $k_{sol}$ (e/Å <sup>3</sup> ), $B_{sol}$ (Å <sup>2</sup> )	0.31 , 58.4	EDS
L-test for twinning <sup>2</sup>	$\langle  L  \rangle = 0.49$ , $\langle L^2 \rangle = 0.33$	Xtriage
Estimated twinning fraction	0.021 for h,-k,-h-l	Xtriage
$F_o, F_c$ correlation	0.96	EDS
Total number of atoms	11733	wwPDB-VP
Average B, all atoms (Å <sup>2</sup> )	55.0	wwPDB-VP

Xtriage's analysis on translational NCS is as follows: *The analyses of the Patterson function reveals a significant off-origin peak that is 23.54 % of the origin peak, indicating pseudo-translational symmetry. The chance of finding a peak of this or larger height randomly in a structure without pseudo-translational symmetry is equal to 4.5649e-03. The detected translational NCS is most likely also responsible for the elevated intensity ratio.*

<sup>1</sup>Intensities estimated from amplitudes.

<sup>2</sup>Theoretical values of  $\langle |L| \rangle$ ,  $\langle L^2 \rangle$  for acentric reflections are 0.5, 0.333 respectively for untwinned datasets, and 0.375, 0.2 for perfectly twinned datasets.

## 5 Model quality [i](#)

### 5.1 Standard geometry [i](#)

Bond lengths and bond angles in the following residue types are not validated in this section: FQB, GOL, ZN, DMS, CL

The Z score for a bond length (or angle) is the number of standard deviations the observed value is removed from the expected value. A bond length (or angle) with  $|Z| > 5$  is considered an outlier worth inspection. RMSZ is the root-mean-square of all Z scores of the bond lengths (or angles).

Mol	Chain	Bond lengths		Bond angles	
		RMSZ	$\# Z  > 5$	RMSZ	$\# Z  > 5$
1	A	0.51	0/2814	0.68	0/3828
1	B	0.54	0/2864	0.69	0/3890
1	C	0.50	0/2730	0.66	0/3720
1	D	0.53	0/2788	0.66	0/3794
All	All	0.52	0/11196	0.67	0/15232

There are no bond length outliers.

There are no bond angle outliers.

There are no chirality outliers.

There are no planarity outliers.

### 5.2 Too-close contacts [i](#)

In the following table, the Non-H and H(model) columns list the number of non-hydrogen atoms and hydrogen atoms in the chain respectively. The H(added) column lists the number of hydrogen atoms added and optimized by MolProbity. The Clashes column lists the number of clashes within the asymmetric unit, whereas Symm-Clashes lists symmetry related clashes.

Mol	Chain	Non-H	H(model)	H(added)	Clashes	Symm-Clashes
1	A	2729	0	2517	15	0
1	B	2778	0	2600	12	0
1	C	2645	0	2359	11	0
1	D	2703	0	2492	12	0
2	A	2	0	0	0	0
2	B	2	0	0	0	0
2	C	2	0	0	0	0
2	D	2	0	0	0	0
3	A	21	0	0	1	0

*Continued on next page...*

*Continued from previous page...*

Mol	Chain	Non-H	H(model)	H(added)	Clashes	Symm-Clashes
3	B	35	0	0	1	0
3	C	25	0	0	1	0
3	D	25	0	0	1	0
4	A	4	0	6	0	0
5	A	6	0	8	6	0
5	B	6	0	8	2	0
6	C	1	0	0	0	0
7	A	187	0	0	0	0
7	B	237	0	0	1	0
7	C	144	0	0	0	0
7	D	179	0	0	1	0
All	All	11733	0	9990	54	0

The all-atom clashscore is defined as the number of clashes found per 1000 atoms (including hydrogen atoms). The all-atom clashscore for this structure is 3.

All (54) close contacts within the same asymmetric unit are listed below, sorted by their clash magnitude.

Atom-1	Atom-2	Interatomic distance (Å)	Clash overlap (Å)
1:A:126:THR:HB	5:A:405:GOL:H2	1.34	1.07
5:A:405:GOL:H32	1:C:76:THR:HA	1.33	1.06
1:B:126:THR:HB	5:B:404:GOL:H2	1.45	0.97
1:B:76:THR:HA	5:B:404:GOL:H12	1.50	0.94
5:A:405:GOL:H12	1:C:126:THR:HB	1.65	0.77
1:D:74:LEU:HD11	1:D:87:ILE:HD11	1.71	0.70
5:A:405:GOL:H12	1:C:126:THR:CB	2.27	0.64
1:C:153:LEU:HD11	1:C:197:ILE:HG21	1.79	0.64
1:A:153:LEU:HD11	1:A:197:ILE:HG21	1.86	0.56
1:D:75:VAL:HG11	1:D:125[B]:LEU:HG	1.87	0.56
1:C:150:ILE:HG22	1:C:174:PRO:HB3	1.87	0.55
1:D:82:PHE:HB2	1:D:244:LEU:HB2	1.88	0.55
1:D:153:LEU:HD11	1:D:197:ILE:HG21	1.90	0.53
1:B:82:PHE:HB2	1:B:244:LEU:HB2	1.90	0.53
1:A:126:THR:CB	5:A:405:GOL:H2	2.24	0.51
1:A:186:ALA:HB1	1:A:243:THR:O	2.12	0.50
1:A:171:VAL:HG11	1:A:315:ILE:HD11	1.92	0.50
1:B:43:GLY:HA3	7:B:501:HOH:O	2.11	0.50
1:B:153:LEU:HD11	1:B:197:ILE:HG21	1.95	0.49
1:B:81:LEU:HD21	1:B:226:PHE:CD2	2.47	0.49
3:C:403:FQB:N5	3:C:403:FQB:C16	2.76	0.49
1:A:70:PRO:HG3	1:A:92:MET:HG2	1.95	0.49

*Continued on next page...*

*Continued from previous page...*

Atom-1	Atom-2	Interatomic distance (Å)	Clash overlap (Å)
1:A:297:ILE:HG12	1:A:320:PHE:HB3	1.94	0.48
3:D:403:FQB:N5	3:D:403:FQB:C16	2.77	0.48
1:B:154:ARG:HA	1:B:158:ASP:OD2	2.14	0.48
3:A:403:FQB:N5	3:A:403:FQB:C16	2.77	0.47
1:B:179:GLY:O	1:B:283:PHE:HA	2.16	0.46
1:D:189:THR:HG23	1:D:275:TYR:CE1	2.51	0.46
1:A:81:LEU:HD21	1:A:226:PHE:CD2	2.51	0.46
1:B:236:ALA:HB1	1:B:239:ARG:HG3	1.98	0.45
1:C:190:GLU:HG3	1:C:196:SER:HB3	1.98	0.45
1:D:111:TYR:CD1	1:D:117:LEU:HD13	2.52	0.45
1:D:44:LEU:HD22	1:D:210[A]:SER:HB3	1.99	0.44
1:A:179:GLY:O	1:A:283:PHE:HA	2.17	0.44
3:B:403:FQB:C16	3:B:403:FQB:N5	2.81	0.44
1:A:150:ILE:HG22	1:A:174:PRO:HB3	1.98	0.44
1:C:349:GLU:HG2	1:C:349:GLU:H	1.58	0.44
1:A:187:TRP:CZ2	1:A:250:LEU:HD11	2.53	0.44
1:A:71[B]:ILE:HG13	1:A:88:GLN:HA	2.00	0.43
1:A:136:VAL:HB	1:A:176:LEU:HB2	2.00	0.43
1:D:44:LEU:CD1	1:D:270:THR:HG22	2.48	0.43
1:B:306:CYS:SG	1:B:312:MET:HG3	2.59	0.42
1:D:92:MET:HE2	7:D:560:HOH:O	2.18	0.42
1:D:151:GLY:HA2	1:D:174:PRO:HG3	2.02	0.42
1:A:141:TYR:CE2	1:A:149:ASN:HA	2.55	0.42
1:C:36:SER:HB3	1:C:350:ALA:HB1	2.02	0.42
1:B:333:LYS:HE3	1:B:333:LYS:HB3	1.92	0.41
1:D:252:LYS:HD3	1:D:253:TYR:CE2	2.55	0.41
1:C:136:VAL:HB	1:C:176:LEU:HB2	2.02	0.41
1:B:155:THR:HG21	1:B:291:PHE:HB2	2.02	0.41
1:C:74:LEU:HD23	1:C:87:ILE:HG13	2.02	0.41
1:A:82:PHE:HB2	1:A:244:LEU:HB2	2.02	0.41
5:A:405:GOL:H12	1:C:126:THR:OG1	2.21	0.41
1:D:179:GLY:O	1:D:283:PHE:HA	2.21	0.40

There are no symmetry-related clashes.

## 5.3 Torsion angles ⓘ

### 5.3.1 Protein backbone ⓘ

In the following table, the Percentiles column shows the percent Ramachandran outliers of the chain as a percentile score with respect to all X-ray entries followed by that with respect to entries

of similar resolution.

The Analysed column shows the number of residues for which the backbone conformation was analysed, and the total number of residues.

Mol	Chain	Analysed	Favoured	Allowed	Outliers	Percentiles	
1	A	341/360 (95%)	330 (97%)	11 (3%)	0	100	100
1	B	342/360 (95%)	332 (97%)	10 (3%)	0	100	100
1	C	336/360 (93%)	327 (97%)	9 (3%)	0	100	100
1	D	335/360 (93%)	329 (98%)	6 (2%)	0	100	100
All	All	1354/1440 (94%)	1318 (97%)	36 (3%)	0	100	100

There are no Ramachandran outliers to report.

### 5.3.2 Protein sidechains ⓘ

In the following table, the Percentiles column shows the percent sidechain outliers of the chain as a percentile score with respect to all X-ray entries followed by that with respect to entries of similar resolution.

The Analysed column shows the number of residues for which the sidechain conformation was analysed, and the total number of residues.

Mol	Chain	Analysed	Rotameric	Outliers	Percentiles	
1	A	264/316 (84%)	257 (97%)	7 (3%)	44	43
1	B	278/316 (88%)	274 (99%)	4 (1%)	67	70
1	C	242/316 (77%)	236 (98%)	6 (2%)	47	47
1	D	265/316 (84%)	255 (96%)	10 (4%)	33	30
All	All	1049/1264 (83%)	1022 (97%)	27 (3%)	49	45

All (27) residues with a non-rotameric sidechain are listed below:

Mol	Chain	Res	Type
1	A	79	SER
1	A	132	TYR
1	A	171	VAL
1	A	182	LYS
1	A	184	SER
1	A	310	LYS
1	A	345	LEU
1	B	29	ARG

*Continued on next page...*

*Continued from previous page...*

Mol	Chain	Res	Type
1	B	74[A]	LEU
1	B	74[B]	LEU
1	B	132	TYR
1	C	87	ILE
1	C	132	TYR
1	C	182	LYS
1	C	184	SER
1	C	337	ASP
1	C	349	GLU
1	D	58	SER
1	D	62	ILE
1	D	64	ASP
1	D	132	TYR
1	D	172[A]	ASN
1	D	172[B]	ASN
1	D	182	LYS
1	D	184	SER
1	D	259	LYS
1	D	318	ASP

Some sidechains can be flipped to improve hydrogen bonding and reduce clashes. All (1) such sidechains are listed below:

Mol	Chain	Res	Type
1	A	172	ASN

### 5.3.3 RNA ⓘ

There are no RNA molecules in this entry.

## 5.4 Non-standard residues in protein, DNA, RNA chains ⓘ

There are no non-standard protein/DNA/RNA residues in this entry.

## 5.5 Carbohydrates ⓘ

There are no carbohydrates in this entry.

## 5.6 Ligand geometry

Of 16 ligands modelled in this entry, 9 are monoatomic - leaving 7 for Mogul analysis.

In the following table, the Counts columns list the number of bonds (or angles) for which Mogul statistics could be retrieved, the number of bonds (or angles) that are observed in the model and the number of bonds (or angles) that are defined in the Chemical Component Dictionary. The Link column lists molecule types, if any, to which the group is linked. The Z score for a bond length (or angle) is the number of standard deviations the observed value is removed from the expected value. A bond length (or angle) with  $|Z| > 2$  is considered an outlier worth inspection. RMSZ is the root-mean-square of all Z scores of the bond lengths (or angles).

Mol	Type	Chain	Res	Link	Bond lengths			Bond angles		
					Counts	RMSZ	# Z  > 2	Counts	RMSZ	# Z  > 2
5	GOL	B	404	-	5,5,5	0.24	0	5,5,5	0.68	0
3	FQB	D	403	2	26,28,39	0.92	1 (3%)	31,39,54	1.64	7 (22%)
3	FQB	A	403	2	21,23,39	1.01	1 (4%)	24,32,54	1.80	7 (29%)
3	FQB	B	403	2	37,39,39	0.72	1 (2%)	46,54,54	1.34	7 (15%)
4	DMS	A	404	-	3,3,3	0.29	0	3,3,3	0.29	0
5	GOL	A	405	-	5,5,5	0.21	0	5,5,5	0.82	0
3	FQB	C	403	2	26,28,39	0.85	1 (3%)	31,39,54	1.64	7 (22%)

In the following table, the Chirals column lists the number of chiral outliers, the number of chiral centers analysed, the number of these observed in the model and the number defined in the Chemical Component Dictionary. Similar counts are reported in the Torsion and Rings columns. '-' means no outliers of that kind were identified.

Mol	Type	Chain	Res	Link	Chirals	Torsions	Rings
5	GOL	B	404	-	-	0/4/4/4	-
3	FQB	D	403	2	-	1/5/19/28	0/4/4/5
3	FQB	A	403	2	-	2/5/9/28	0/3/3/5
3	FQB	B	403	2	-	5/14/28/28	0/5/5/5
5	GOL	A	405	-	-	2/4/4/4	-
3	FQB	C	403	2	-	0/5/19/28	0/4/4/5

All (4) bond length outliers are listed below:

Mol	Chain	Res	Type	Atoms	Z	Observed(Å)	Ideal(Å)
3	A	403	FQB	C18-N4	3.44	1.33	1.31
3	D	403	FQB	C18-N4	3.37	1.33	1.31
3	B	403	FQB	C18-N4	3.23	1.33	1.31
3	C	403	FQB	C18-N4	3.01	1.33	1.31

All (28) bond angle outliers are listed below:



Mol	Chain	Res	Type	Atoms	Z	Observed(°)	Ideal(°)
3	D	403	FQB	C18-C22-C21	-4.93	114.86	119.59
3	B	403	FQB	C18-C22-C21	-4.86	114.92	119.59
3	A	403	FQB	C18-C22-C21	-4.77	115.01	119.59
3	C	403	FQB	C18-C22-C21	-4.73	115.05	119.59
3	C	403	FQB	C23-N6-C24	4.33	123.12	115.88
3	B	403	FQB	C23-N6-C24	4.21	122.93	115.88
3	A	403	FQB	C23-N6-C24	4.11	122.77	115.88
3	D	403	FQB	C23-N6-C24	4.10	122.75	115.88
3	C	403	FQB	C20-C21-C22	3.66	121.28	118.14
3	B	403	FQB	C20-C21-C22	3.59	121.22	118.14
3	D	403	FQB	C20-C21-C22	3.55	121.18	118.14
3	A	403	FQB	C20-C21-C22	3.37	121.03	118.14
3	C	403	FQB	C19-C20-C21	-2.77	117.38	119.77
3	B	403	FQB	C19-C20-C21	-2.58	117.54	119.77
3	D	403	FQB	C19-C20-C21	-2.44	117.67	119.77
3	A	403	FQB	C19-C20-C21	-2.30	117.78	119.77
3	D	403	FQB	N5-C23-N6	-2.24	125.18	128.68
3	A	403	FQB	N5-C23-N6	-2.22	125.21	128.68
3	C	403	FQB	N5-C23-N6	-2.16	125.30	128.68
3	B	403	FQB	N5-C23-N6	-2.15	125.32	128.68
3	D	403	FQB	C24-C21-C22	-2.11	118.39	119.98
3	A	403	FQB	C22-C18-N4	2.10	124.83	118.92
3	B	403	FQB	C24-C21-C22	-2.10	118.40	119.98
3	C	403	FQB	C24-C21-C22	-2.09	118.41	119.98
3	D	403	FQB	C22-C18-N4	2.09	124.81	118.92
3	A	403	FQB	C24-C21-C22	-2.07	118.42	119.98
3	B	403	FQB	C22-C18-N4	2.05	124.68	118.92
3	C	403	FQB	C22-C18-N4	2.03	124.63	118.92

There are no chirality outliers.

All (10) torsion outliers are listed below:

Mol	Chain	Res	Type	Atoms
5	A	405	GOL	O2-C2-C3-O3
3	D	403	FQB	C14-C13-N1-C12
3	A	403	FQB	C14-C13-N1-C25
3	B	403	FQB	N-C2-C3-C4
3	A	403	FQB	C14-C13-N1-C12
3	B	403	FQB	C14-C13-N1-C12
5	A	405	GOL	C1-C2-C3-O3
3	B	403	FQB	C2-C3-C4-C5
3	B	403	FQB	C2-C3-C4-C9
3	B	403	FQB	C3-C2-N-C1

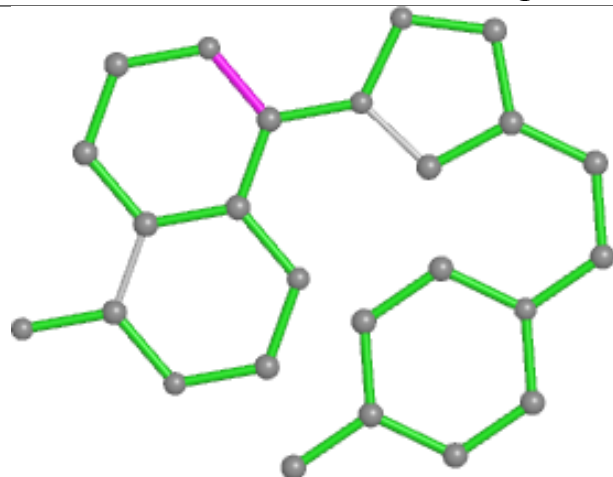
There are no ring outliers.

6 monomers are involved in 12 short contacts:

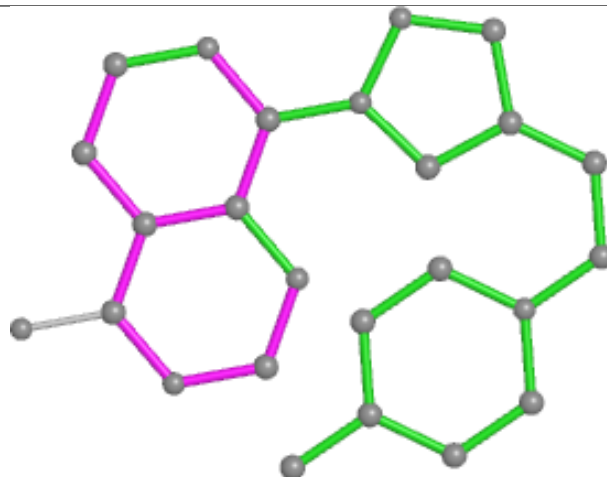
Mol	Chain	Res	Type	Clashes	Symm-Clashes
5	B	404	GOL	2	0
3	D	403	FQB	1	0
3	A	403	FQB	1	0
3	B	403	FQB	1	0
5	A	405	GOL	6	0
3	C	403	FQB	1	0

The following is a two-dimensional graphical depiction of Mogul quality analysis of bond lengths, bond angles, torsion angles, and ring geometry for all instances of the Ligand of Interest. In addition, ligands with molecular weight > 250 and outliers as shown on the validation Tables will also be included. For torsion angles, if less than 5% of the Mogul distribution of torsion angles is within 10 degrees of the torsion angle in question, then that torsion angle is considered an outlier. Any bond that is central to one or more torsion angles identified as an outlier by Mogul will be highlighted in the graph. For rings, the root-mean-square deviation (RMSD) between the ring in question and similar rings identified by Mogul is calculated over all ring torsion angles. If the average RMSD is greater than 60 degrees and the minimal RMSD between the ring in question and any Mogul-identified rings is also greater than 60 degrees, then that ring is considered an outlier. The outliers are highlighted in purple. The color gray indicates Mogul did not find sufficient equivalents in the CSD to analyse the geometry.

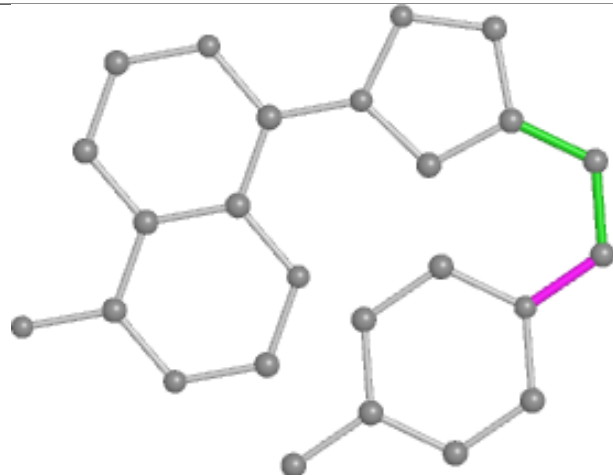
## Ligand FQB D 403



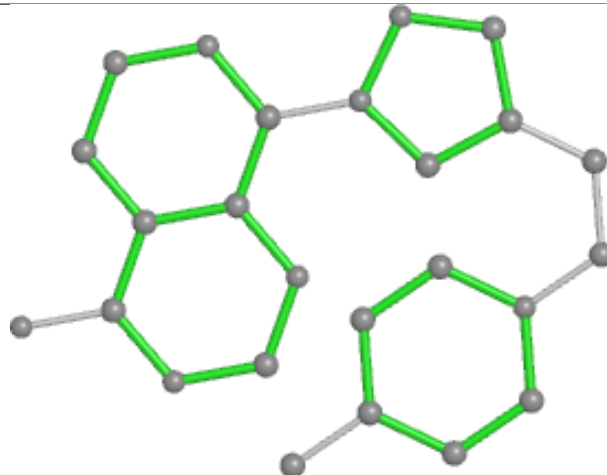
Bond lengths



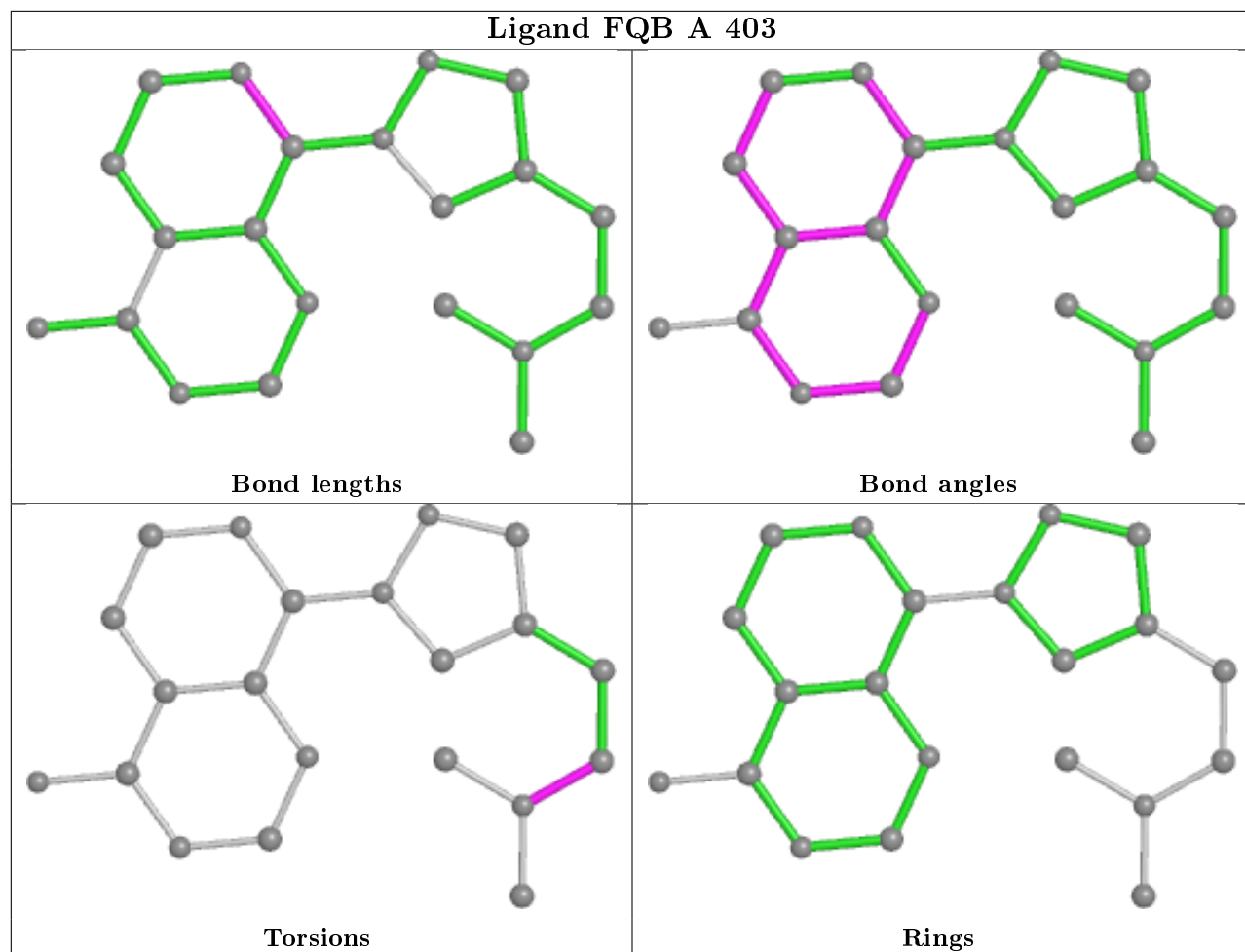
Bond angles

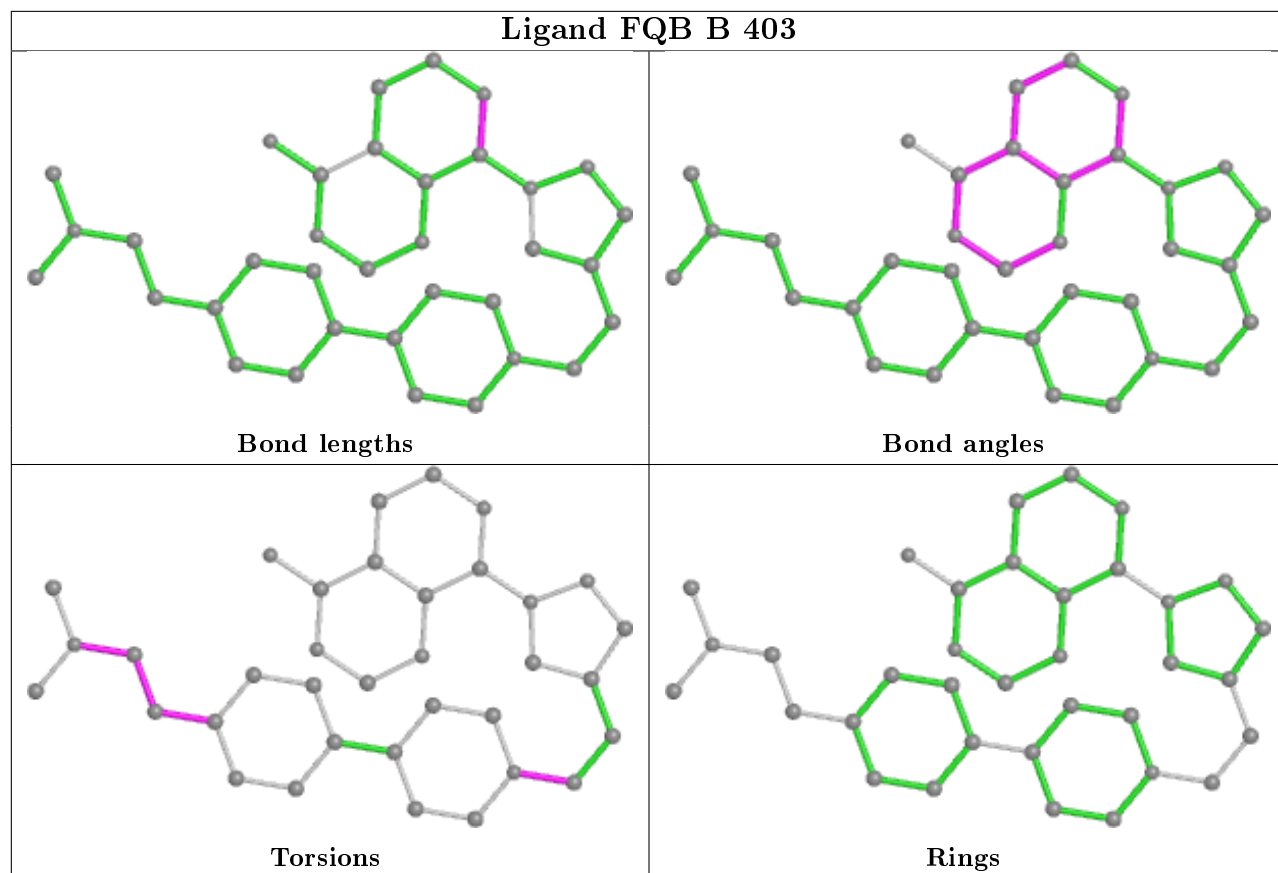


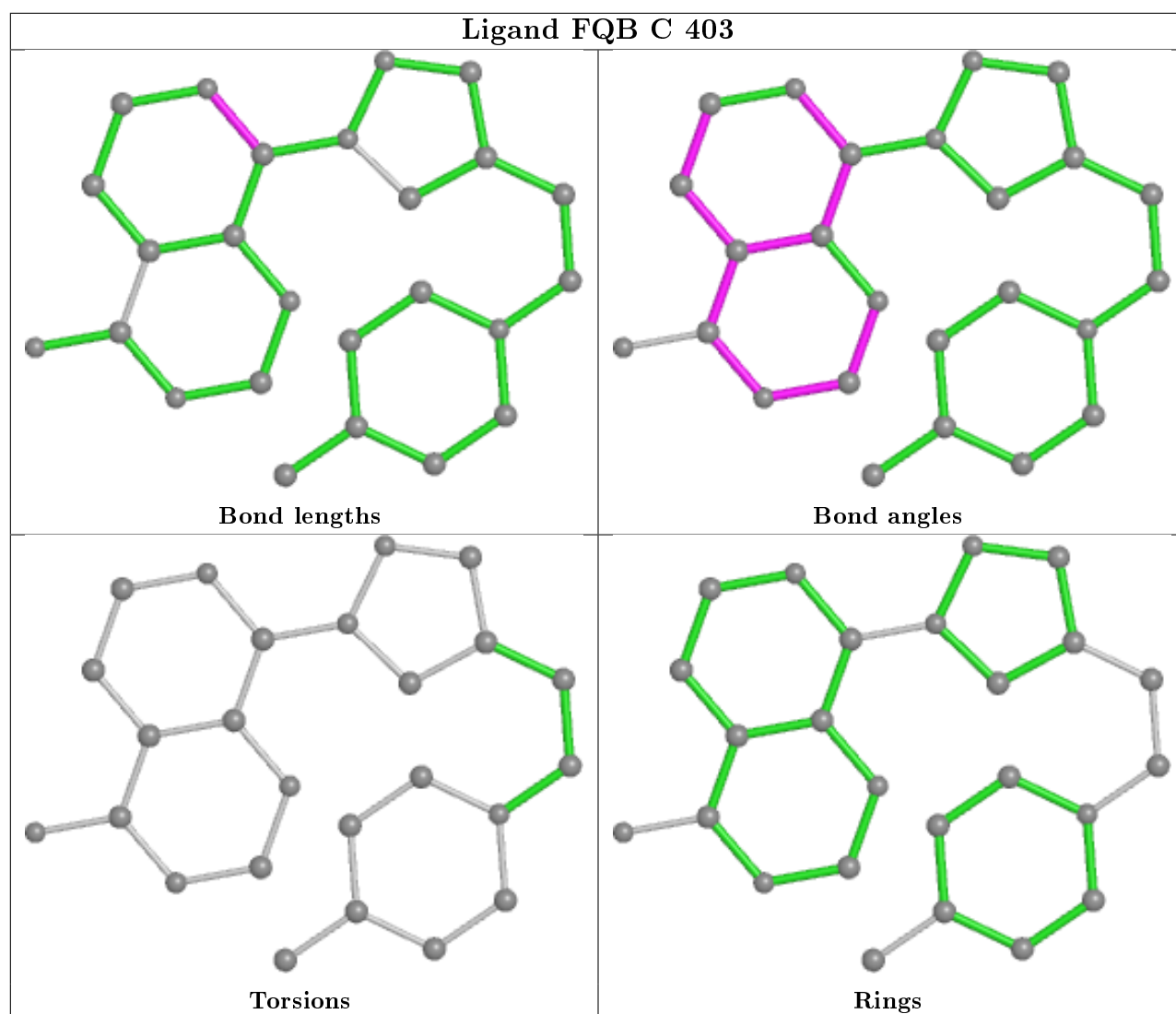
Torsions



Rings







## 5.7 Other polymers [i](#)

There are no such residues in this entry.

## 5.8 Polymer linkage issues [i](#)

There are no chain breaks in this entry.

## 6 Fit of model and data

### 6.1 Protein, DNA and RNA chains

In the following table, the column labelled ‘#RSRZ> 2’ contains the number (and percentage) of RSRZ outliers, followed by percent RSRZ outliers for the chain as percentile scores relative to all X-ray entries and entries of similar resolution. The OWAB column contains the minimum, median, 95<sup>th</sup> percentile and maximum values of the occupancy-weighted average B-factor per residue. The column labelled ‘Q< 0.9’ lists the number of (and percentage) of residues with an average occupancy less than 0.9.

Mol	Chain	Analysed	<RSRZ>	#RSRZ>2	OWAB(Å <sup>2</sup> )	Q<0.9
1	A	341/360 (94%)	0.32	18 (5%) 26 33	28, 52, 93, 118	0
1	B	340/360 (94%)	0.10	3 (0%) 84 87	28, 44, 73, 104	0
1	C	341/360 (94%)	0.35	20 (5%) 22 28	33, 57, 102, 118	0
1	D	334/360 (92%)	0.15	11 (3%) 46 54	30, 54, 92, 115	0
All	All	1356/1440 (94%)	0.23	52 (3%) 40 48	28, 51, 92, 118	0

All (52) RSRZ outliers are listed below:

Mol	Chain	Res	Type	RSRZ
1	C	329	TYR	4.5
1	C	334	ALA	4.5
1	C	347	THR	4.0
1	C	338	ASN	3.9
1	C	339	THR	3.8
1	A	326	PRO	3.7
1	C	326	PRO	3.7
1	A	351	ALA	3.6
1	D	337	ASP	3.6
1	A	334	ALA	3.4
1	C	337	ASP	3.4
1	A	310	LYS	3.2
1	C	20	THR	3.2
1	B	353	PHE	3.1
1	C	330	LYS	3.0
1	D	335	GLY	2.9
1	C	335	GLY	2.9
1	A	332	TRP	2.9
1	A	336	LYS	2.8
1	C	332	TRP	2.8
1	A	340	VAL	2.7

*Continued on next page...*

*Continued from previous page...*

Mol	Chain	Res	Type	RSRZ
1	C	324	PHE	2.7
1	A	339	THR	2.7
1	A	312	MET	2.7
1	C	170	GLY	2.6
1	A	172	ASN	2.5
1	D	328	ARG	2.5
1	A	324	PHE	2.5
1	D	334	ALA	2.5
1	A	329	TYR	2.5
1	D	171	VAL	2.4
1	A	350	ALA	2.4
1	D	297	ILE	2.3
1	D	336	LYS	2.3
1	D	312	MET	2.3
1	C	167	THR	2.3
1	D	294	ARG	2.2
1	A	156	ILE	2.2
1	C	340	VAL	2.2
1	C	353	PHE	2.2
1	B	339	THR	2.2
1	C	300	GLY	2.2
1	D	338	ASN	2.1
1	C	11	SER	2.1
1	C	104	ASP	2.1
1	B	338[A]	ASN	2.1
1	A	320	PHE	2.1
1	A	231	ALA	2.0
1	A	325	GLN	2.0
1	A	335	GLY	2.0
1	C	305	LEU	2.0
1	D	351	ALA	2.0

## 6.2 Non-standard residues in protein, DNA, RNA chains ⓘ

There are no non-standard protein/DNA/RNA residues in this entry.

## 6.3 Carbohydrates ⓘ

There are no carbohydrates in this entry.



## 6.4 Ligands ⓘ

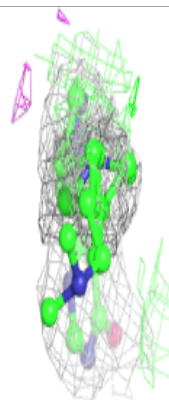
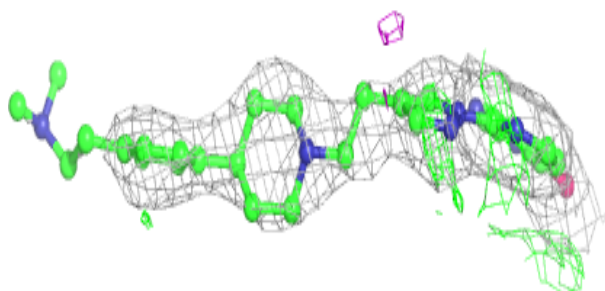
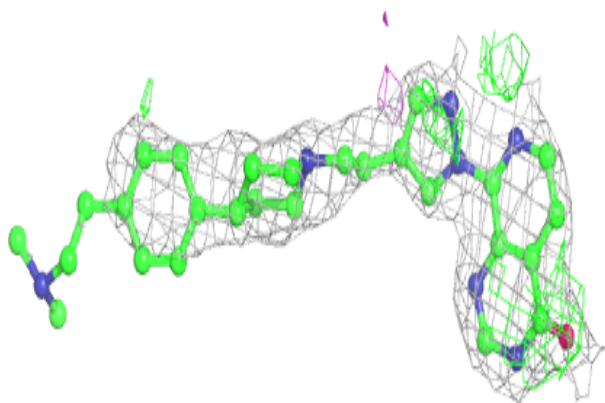
In the following table, the Atoms column lists the number of modelled atoms in the group and the number defined in the chemical component dictionary. The B-factors column lists the minimum, median, 95<sup>th</sup> percentile and maximum values of B factors of atoms in the group. The column labelled 'Q< 0.9' lists the number of atoms with occupancy less than 0.9.

Mol	Type	Chain	Res	Atoms	RSCC	RSR	B-factors(Å <sup>2</sup> )	Q<0.9
6	CL	C	404	1/1	0.82	0.16	90,90,90,90	0
4	DMS	A	404	4/4	0.86	0.21	99,99,100,100	4
5	GOL	A	405	6/6	0.88	0.27	30,36,37,39	6
5	GOL	B	404	6/6	0.90	0.27	29,33,36,38	6
3	FQB	B	403	35/35	0.91	0.20	37,53,76,77	35
3	FQB	D	403	25/35	0.92	0.17	42,47,59,59	25
3	FQB	A	403	21/35	0.93	0.13	58,63,71,72	21
3	FQB	C	403	25/35	0.93	0.16	41,47,66,67	25
2	ZN	D	402	1/1	0.96	0.08	51,51,51,51	1
2	ZN	B	401	1/1	0.98	0.15	37,37,37,37	1
2	ZN	A	401	1/1	0.98	0.14	47,47,47,47	1
2	ZN	C	402	1/1	0.98	0.13	59,59,59,59	1
2	ZN	A	402	1/1	0.98	0.10	56,56,56,56	1
2	ZN	D	401	1/1	0.98	0.14	36,36,36,36	1
2	ZN	C	401	1/1	0.99	0.16	37,37,37,37	1
2	ZN	B	402	1/1	0.99	0.12	40,40,40,40	1

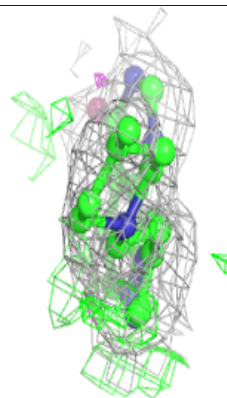
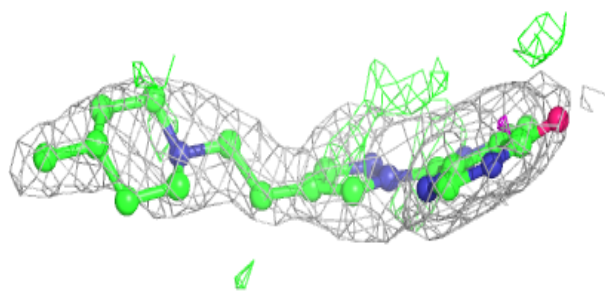
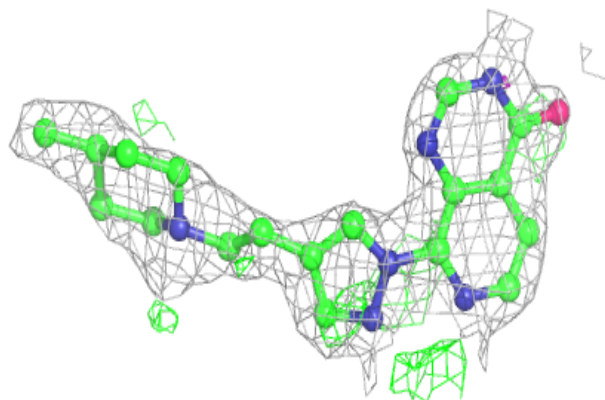
The following is a graphical depiction of the model fit to experimental electron density of all instances of the Ligand of Interest. In addition, ligands with molecular weight > 250 and outliers as shown on the geometry validation Tables will also be included. Each fit is shown from different orientation to approximate a three-dimensional view.

**Electron density around FQB B 403:**

$2mF_o-DF_c$  (at 0.7 rmsd) in gray  
 $mF_o-DF_c$  (at 3 rmsd) in purple (negative)  
and green (positive)

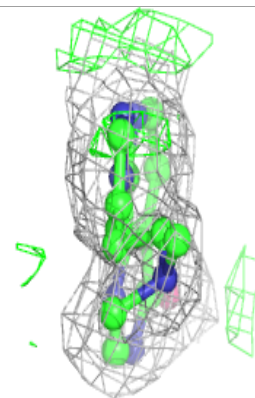
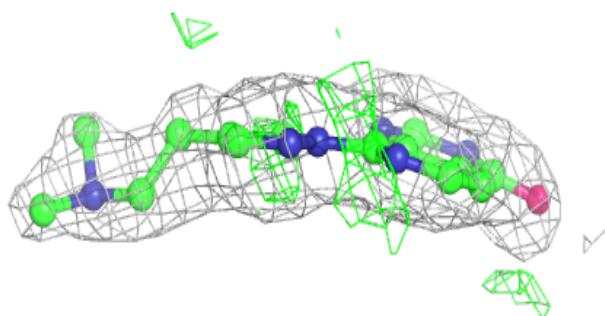
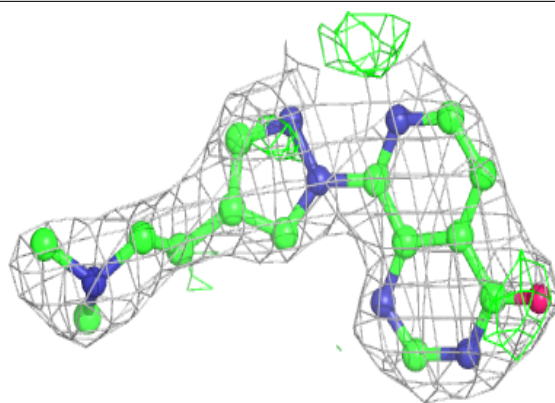
**Electron density around FQB D 403:**

$2mF_o-DF_c$  (at 0.7 rmsd) in gray  
 $mF_o-DF_c$  (at 3 rmsd) in purple (negative)  
and green (positive)

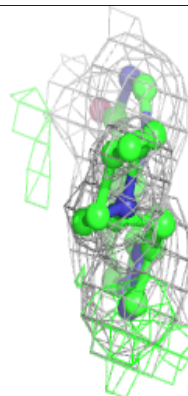
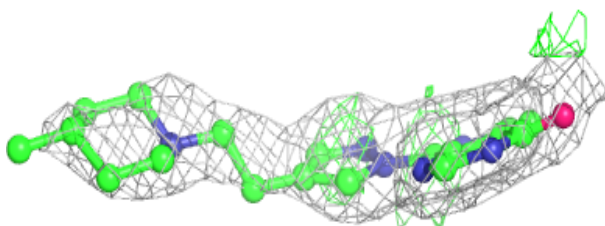
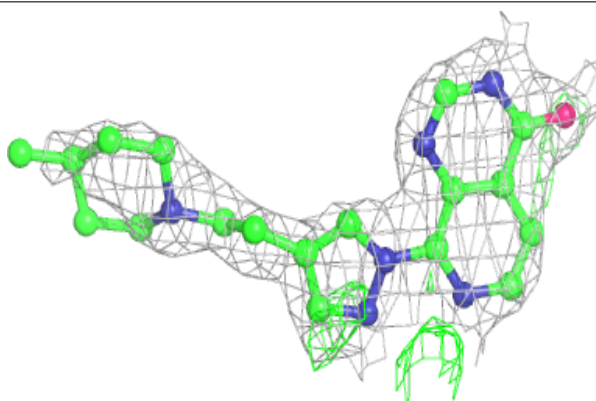


**Electron density around FQB A 403:**

$2mF_o-DF_c$  (at 0.7 rmsd) in gray  
 $mF_o-DF_c$  (at 3 rmsd) in purple (negative)  
and green (positive)

**Electron density around FQB C 403:**

$2mF_o-DF_c$  (at 0.7 rmsd) in gray  
 $mF_o-DF_c$  (at 3 rmsd) in purple (negative)  
and green (positive)



## 6.5 Other polymers

There are no such residues in this entry.