



# Full wwPDB X-ray Structure Validation Report ⓘ

Aug 6, 2020 – 11:08 PM BST

PDB ID : 6H5W  
Title : Crystal structure of human Angiotensin-1 converting enzyme C-domain in complex with Omapatrilat.  
Authors : Cozier, G.E.; Acharya, K.R.  
Deposited on : 2018-07-25  
Resolution : 1.37 Å(reported)

This is a Full wwPDB X-ray Structure Validation Report for a publicly released PDB entry.

We welcome your comments at [validation@mail.wwpdb.org](mailto:validation@mail.wwpdb.org)

A user guide is available at

<https://www.wwpdb.org/validation/2017/XrayValidationReportHelp>

with specific help available everywhere you see the ⓘ symbol.

---

The following versions of software and data (see [references ⓘ](#)) were used in the production of this report:

MolProbity : 4.02b-467  
Mogul : 1.8.5 (274361), CSD as541be (2020)  
Xtriage (Phenix) : 1.13  
EDS : 2.13.1  
buster-report : 1.1.7 (2018)  
Percentile statistics : 20191225.v01 (using entries in the PDB archive December 25th 2019)  
Refmac : 5.8.0158  
CCP4 : 7.0.044 (Gargrove)  
Ideal geometry (proteins) : Engh & Huber (2001)  
Ideal geometry (DNA, RNA) : Parkinson et al. (1996)  
Validation Pipeline (wwPDB-VP) : 2.13.1

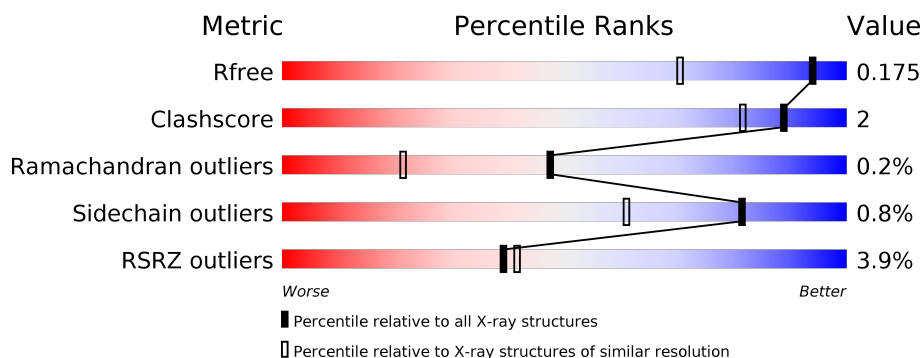
# 1 Overall quality at a glance

The following experimental techniques were used to determine the structure:

## *X-RAY DIFFRACTION*

The reported resolution of this entry is 1.37 Å.

Percentile scores (ranging between 0-100) for global validation metrics of the entry are shown in the following graphic. The table shows the number of entries on which the scores are based.



Metric	Whole archive (#Entries)	Similar resolution (#Entries, resolution range(Å))
$R_{free}$	130704	2907 (1.40-1.36)
Clashscore	141614	3037 (1.40-1.36)
Ramachandran outliers	138981	2970 (1.40-1.36)
Sidechain outliers	138945	2969 (1.40-1.36)
RSRZ outliers	127900	2846 (1.40-1.36)

The table below summarises the geometric issues observed across the polymeric chains and their fit to the electron density. The red, orange, yellow and green segments on the lower bar indicate the fraction of residues that contain outliers for  $\geq 3$ , 2, 1 and 0 types of geometric quality criteria respectively. A grey segment represents the fraction of residues that are not modelled. The numeric value for each fraction is indicated below the corresponding segment, with a dot representing fractions  $\leq 5\%$ . The upper red bar (where present) indicates the fraction of residues that have poor fit to the electron density. The numeric value is given above the bar.

Mol	Chain	Length	Quality of chain
1	A	591	<div> <div>4%</div> <div> <div></div> <div>94%</div> <div>5%</div> </div> </div>
2	B	2	<div> <div>100%</div> </div>
3	C	4	<div> <div>75%</div> <div>25%</div> </div>

## 2 Entry composition

There are 11 unique types of molecules in this entry. The entry contains 10846 atoms, of which 5004 are hydrogens and 0 are deuteriums.

In the tables below, the ZeroOcc column contains the number of atoms modelled with zero occupancy, the AltConf column contains the number of residues with at least one atom in alternate conformation and the Trace column contains the number of residues modelled with at most 2 atoms.

- Molecule 1 is a protein called Angiotensin-converting enzyme.

Mol	Chain	Residues	Atoms						ZeroOcc	AltConf	Trace
			Total	C	H	N	O	S			
1	A	586	9722	3158	4771	849	917	27	0	26	0

There are 5 discrepancies between the modelled and reference sequences:

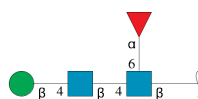
Chain	Residue	Modelled	Actual	Comment	Reference
A	64	GLY	GLU	engineered mutation	UNP P12821
A	90	GLN	ASN	engineered mutation	UNP P12821
A	155	GLN	ASN	engineered mutation	UNP P12821
A	337	GLN	ASN	engineered mutation	UNP P12821
A	586	GLN	ASN	engineered mutation	UNP P12821

- Molecule 2 is an oligosaccharide called 2-acetamido-2-deoxy-beta-D-glucopyranose-(1-4)-2-acetamido-2-deoxy-beta-D-glucopyranose.



Mol	Chain	Residues	Atoms					ZeroOcc	AltConf	Trace
			Total	C	H	N	O			
2	B	2	53	16	25	2	10	0	0	0

- Molecule 3 is an oligosaccharide called beta-D-mannopyranose-(1-4)-2-acetamido-2-deoxy-beta-D-glucopyranose-(1-4)-[alpha-L-fucopyranose-(1-6)]2-acetamido-2-deoxy-beta-D-glucopyranose.



Mol	Chain	Residues	Atoms					ZeroOcc	AltConf	Trace
3	C	4	Total	C	H	N	O	0	0	0
			92	28	43	2	19			

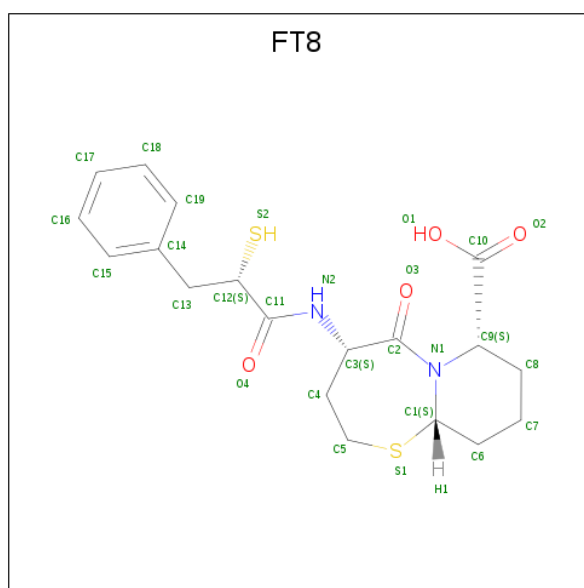
- Molecule 4 is ZINC ION (three-letter code: ZN) (formula: Zn).

Mol	Chain	Residues	Atoms		ZeroOcc	AltConf
4	A	1	Total	Zn	0	0
			1	1		

- Molecule 5 is CHLORIDE ION (three-letter code: CL) (formula: Cl).

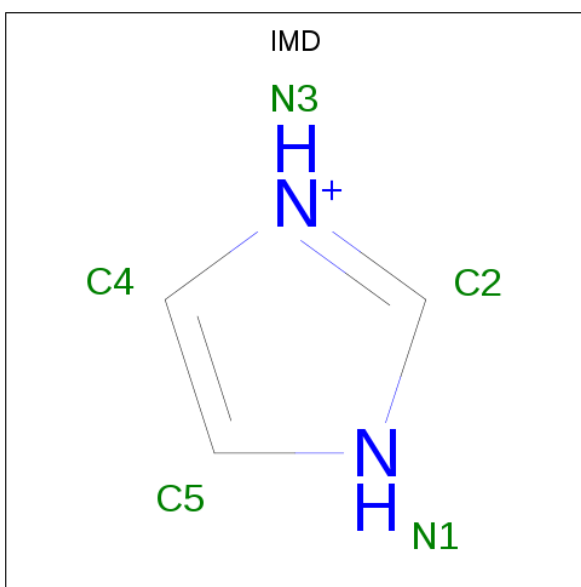
Mol	Chain	Residues	Atoms		ZeroOcc	AltConf
5	A	2	Total	Cl	0	0
			2	2		

- Molecule 6 is Omapatrilat (three-letter code: FT8) (formula: C<sub>19</sub>H<sub>24</sub>N<sub>2</sub>O<sub>4</sub>S<sub>2</sub>) (labeled as "Ligand of Interest" by author).



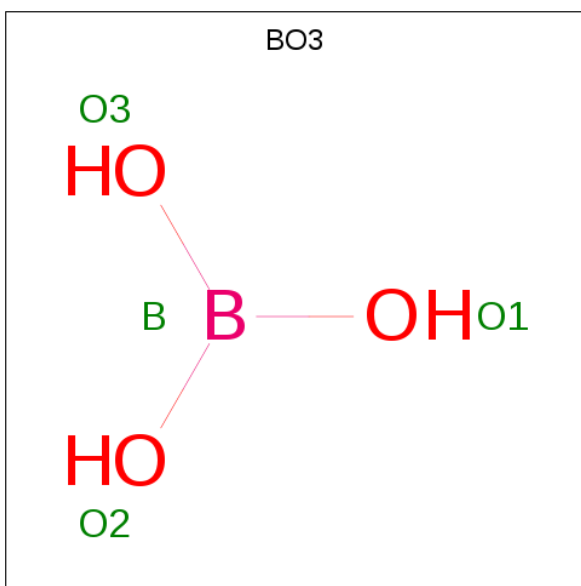
Mol	Chain	Residues	Atoms						ZeroOcc	AltConf
6	A	1	Total	C	H	N	O	S	0	0
			50	19	23	2	4	2		
6	A	1	Total	C	H	N	O	S	0	1
			98	38	44	4	8	4		
6	A	1	Total	C	H	N	O	S	0	1
			49	19	22	2	4	2		

- Molecule 7 is IMIDAZOLE (three-letter code: IMD) (formula: C<sub>3</sub>H<sub>5</sub>N<sub>2</sub>).



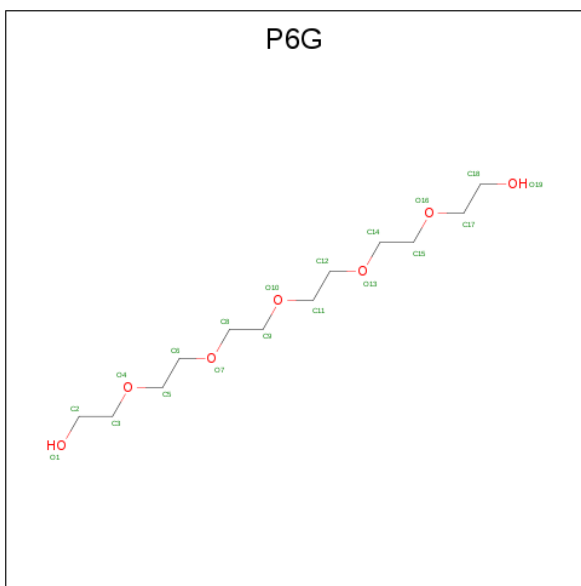
Mol	Chain	Residues	Atoms				ZeroOcc	AltConf
7	A	1	Total	C	H	N	0	0
			10	3	5	2		

- Molecule 8 is BORIC ACID (three-letter code: BO3) (formula:  $\text{BH}_3\text{O}_3$ ).



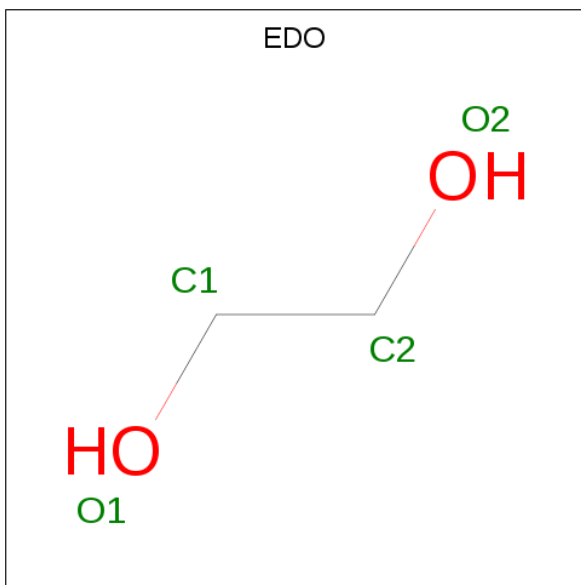
Mol	Chain	Residues	Atoms				ZeroOcc	AltConf
8	A	1	Total	B	H	O	0	0
			7	1	3	3		
8	A	1	Total	B	H	O	0	0
			7	1	3	3		
8	A	1	Total	B	H	O	0	0
			7	1	3	3		

- Molecule 9 is HEXAETHYLENE GLYCOL (three-letter code: P6G) (formula:  $C_{12}H_{26}O_7$ ).



Mol	Chain	Residues	Atoms				ZeroOcc	AltConf
9	A	1	Total	C	H	O	0	0
			45	12	26	7		

- Molecule 10 is 1,2-ETHANEDIOL (three-letter code: EDO) (formula:  $C_2H_6O_2$ ).



Mol	Chain	Residues	Atoms				ZeroOcc	AltConf
10	A	1	Total	C	H	O	0	0
			10	2	6	2		
10	A	1	Total	C	H	O	0	0
			10	2	6	2		

*Continued on next page...*

*Continued from previous page...*

Mol	Chain	Residues	Atoms				ZeroOcc	AltConf
10	A	1	Total	C	H	O	0	0
			10	2	6	2		
10	A	1	Total	C	H	O	0	0
			10	2	6	2		
10	A	1	Total	C	H	O	0	0
			10	2	6	2		
10	A	1	Total	C	H	O	0	1
			10	2	6	2		

- Molecule 11 is water.

Mol	Chain	Residues	Atoms		ZeroOcc	AltConf
11	A	633	Total	O	0	13
			643	643		





## 4 Data and refinement statistics

Property	Value	Source
Space group	P 21 21 21	Depositor
Cell constants a, b, c, $\alpha$ , $\beta$ , $\gamma$	56.60 Å 85.13 Å 134.26 Å 90.00° 90.00° 90.00°	Depositor
Resolution (Å)	71.89 – 1.37 71.89 – 1.37	Depositor EDS
% Data completeness (in resolution range)	99.8 (71.89-1.37) 99.9 (71.89-1.37)	Depositor EDS
$R_{merge}$	(Not available)	Depositor
$R_{sym}$	(Not available)	Depositor
$\langle I/\sigma(I) \rangle$ <sup>1</sup>	1.41 (at 1.37 Å)	Xtriage
Refinement program	PHENIX (1.13 _2998: ???)	Depositor
R, $R_{free}$	0.145 , 0.175 0.145 , 0.175	Depositor DCC
$R_{free}$ test set	2698 reflections (1.98%)	wwPDB-VP
Wilson B-factor (Å <sup>2</sup> )	16.7	Xtriage
Anisotropy	0.264	Xtriage
Bulk solvent $k_{sol}$ (e/Å <sup>3</sup> ), $B_{sol}$ (Å <sup>2</sup> )	0.41 , 52.1	EDS
L-test for twinning <sup>2</sup>	$\langle  L  \rangle = 0.52$ , $\langle L^2 \rangle = 0.36$	Xtriage
Estimated twinning fraction	No twinning to report.	Xtriage
$F_o, F_c$ correlation	0.98	EDS
Total number of atoms	10846	wwPDB-VP
Average B, all atoms (Å <sup>2</sup> )	25.0	wwPDB-VP

Xtriage's analysis on translational NCS is as follows: *The largest off-origin peak in the Patterson function is 5.17% of the height of the origin peak. No significant pseudotranslation is detected.*

<sup>1</sup>Intensities estimated from amplitudes.

<sup>2</sup>Theoretical values of  $\langle |L| \rangle$ ,  $\langle L^2 \rangle$  for acentric reflections are 0.5, 0.333 respectively for untwinned datasets, and 0.375, 0.2 for perfectly twinned datasets.

## 5 Model quality [i](#)

### 5.1 Standard geometry [i](#)

Bond lengths and bond angles in the following residue types are not validated in this section: ZN, BMA, NAG, CL, FT8, BO3, EDO, FUC, P6G, CSO, IMD

The Z score for a bond length (or angle) is the number of standard deviations the observed value is removed from the expected value. A bond length (or angle) with  $|Z| > 5$  is considered an outlier worth inspection. RMSZ is the root-mean-square of all Z scores of the bond lengths (or angles).

Mol	Chain	Bond lengths		Bond angles	
		RMSZ	$\# Z  > 5$	RMSZ	$\# Z  > 5$
1	A	0.38	0/5118	0.59	0/6954

There are no bond length outliers.

There are no bond angle outliers.

There are no chirality outliers.

There are no planarity outliers.

### 5.2 Too-close contacts [i](#)

In the following table, the Non-H and H(model) columns list the number of non-hydrogen atoms and hydrogen atoms in the chain respectively. The H(added) column lists the number of hydrogen atoms added and optimized by MolProbity. The Clashes column lists the number of clashes within the asymmetric unit, whereas Symm-Clashes lists symmetry related clashes.

Mol	Chain	Non-H	H(model)	H(added)	Clashes	Symm-Clashes
1	A	4951	4771	4723	19	0
2	B	28	25	25	0	0
3	C	49	43	43	0	0
4	A	1	0	0	0	0
5	A	2	0	0	0	0
6	A	108	89	0	0	0
7	A	5	5	5	0	0
8	A	12	9	9	0	0
9	A	19	26	26	0	0
10	A	24	36	36	3	0
11	A	643	0	0	7	0
All	All	5842	5004	4867	19	0

The all-atom clashscore is defined as the number of clashes found per 1000 atoms (including

hydrogen atoms). The all-atom clashscore for this structure is 2.

All (19) close contacts within the same asymmetric unit are listed below, sorted by their clash magnitude.

Atom-1	Atom-2	Interatomic distance (Å)	Clash overlap (Å)
1:A:314:ARG:NH1	11:A:804:HOH:O	2.27	0.67
1:A:496:CSO:OD	1:A:623:PRO:HD3	1.98	0.63
1:A:617:PRO:HD2	11:A:826:HOH:O	2.08	0.53
1:A:239:GLU:OE2	11:A:801:HOH:O	2.18	0.52
1:A:195:GLN:NE2	11:A:802:HOH:O	2.20	0.52
1:A:496:CSO:OD	1:A:623:PRO:CD	2.58	0.51
1:A:219[A]:SER:HG	10:A:719:EDO:C1	2.24	0.50
1:A:219[A]:SER:OG	10:A:719:EDO:C1	2.61	0.48
1:A:211:ASN:HB2	10:A:719:EDO:H21	1.95	0.48
1:A:118:LYS:NZ	1:A:403:GLU:OE2	2.38	0.48
1:A:308:GLN:NE2	11:A:818:HOH:O	2.46	0.47
1:A:593:LEU:HD22	11:A:1396:HOH:O	2.14	0.46
1:A:511:LYS:O	1:A:515:PRO:HD2	2.17	0.45
1:A:479[A]:GLU:OE1	11:A:803:HOH:O	2.21	0.45
1:A:96:GLY:HA3	1:A:122:LEU:CD2	2.49	0.43
1:A:179:LEU:HD11	1:A:499:VAL:HG23	2.01	0.43
1:A:457:PHE:CE2	1:A:461:SER:HB3	2.54	0.42
1:A:106:GLN:HG2	1:A:106:GLN:O	2.21	0.41
1:A:462:TYR:O	1:A:466:GLN:HG2	2.20	0.41

There are no symmetry-related clashes.

## 5.3 Torsion angles [i](#)

### 5.3.1 Protein backbone [i](#)

In the following table, the Percentiles column shows the percent Ramachandran outliers of the chain as a percentile score with respect to all X-ray entries followed by that with respect to entries of similar resolution.

The Analysed column shows the number of residues for which the backbone conformation was analysed, and the total number of residues.

Mol	Chain	Analysed	Favoured	Allowed	Outliers	Percentiles
1	A	609/591 (103%)	597 (98%)	11 (2%)	1 (0%)	47 21

All (1) Ramachandran outliers are listed below:

Mol	Chain	Res	Type
1	A	72	ASN

### 5.3.2 Protein sidechains [i](#)

In the following table, the Percentiles column shows the percent sidechain outliers of the chain as a percentile score with respect to all X-ray entries followed by that with respect to entries of similar resolution.

The Analysed column shows the number of residues for which the sidechain conformation was analysed, and the total number of residues.

Mol	Chain	Analysed	Rotameric	Outliers	Percentiles
1	A	535/514 (104%)	530 (99%)	5 (1%)	78 56

All (5) residues with a non-rotameric sidechain are listed below:

Mol	Chain	Res	Type
1	A	124[A]	ARG
1	A	124[B]	ARG
1	A	390	TYR
1	A	394	TYR
1	A	410	HIS

Some sidechains can be flipped to improve hydrogen bonding and reduce clashes. There are no such sidechains identified.

### 5.3.3 RNA [i](#)

There are no RNA molecules in this entry.

## 5.4 Non-standard residues in protein, DNA, RNA chains [i](#)

1 non-standard protein/DNA/RNA residue is modelled in this entry.

In the following table, the Counts columns list the number of bonds (or angles) for which Mogul statistics could be retrieved, the number of bonds (or angles) that are observed in the model and the number of bonds (or angles) that are defined in the Chemical Component Dictionary. The Link column lists molecule types, if any, to which the group is linked. The Z score for a bond length (or angle) is the number of standard deviations the observed value is removed from the expected value. A bond length (or angle) with  $|Z| > 2$  is considered an outlier worth inspection. RMSZ is the root-mean-square of all Z scores of the bond lengths (or angles).

Mol	Type	Chain	Res	Link	Bond lengths			Bond angles		
					Counts	RMSZ	$\# Z  > 2$	Counts	RMSZ	$\# Z  > 2$
1	CSO	A	496	1	3,6,7	0.80	0	0,6,8	0.00	-

In the following table, the Chirals column lists the number of chiral outliers, the number of chiral centers analysed, the number of these observed in the model and the number defined in the Chemical Component Dictionary. Similar counts are reported in the Torsion and Rings columns. '-' means no outliers of that kind were identified.

Mol	Type	Chain	Res	Link	Chirals	Torsions	Rings
1	CSO	A	496	1	-	0/1/5/7	-

There are no bond length outliers.

There are no bond angle outliers.

There are no chirality outliers.

There are no torsion outliers.

There are no ring outliers.

1 monomer is involved in 2 short contacts:

Mol	Chain	Res	Type	Clashes	Symm-Clashes
1	A	496	CSO	2	0

## 5.5 Carbohydrates

6 monosaccharides are modelled in this entry.

In the following table, the Counts columns list the number of bonds (or angles) for which Mogul statistics could be retrieved, the number of bonds (or angles) that are observed in the model and the number of bonds (or angles) that are defined in the Chemical Component Dictionary. The Link column lists molecule types, if any, to which the group is linked. The Z score for a bond length (or angle) is the number of standard deviations the observed value is removed from the expected value. A bond length (or angle) with  $|Z| > 2$  is considered an outlier worth inspection. RMSZ is the root-mean-square of all Z scores of the bond lengths (or angles).

Mol	Type	Chain	Res	Link	Bond lengths			Bond angles		
					Counts	RMSZ	$\# Z  > 2$	Counts	RMSZ	$\# Z  > 2$
2	NAG	B	1	1,2	14,14,15	0.41	0	17,19,21	0.55	0
2	NAG	B	2	2	14,14,15	0.38	0	17,19,21	0.41	0
3	NAG	C	1	1,3	14,14,15	0.54	0	17,19,21	0.43	0
3	NAG	C	2	3	14,14,15	0.45	0	17,19,21	0.39	0
3	BMA	C	3	3	11,11,12	1.15	2 (18%)	15,15,17	1.24	2 (13%)
3	FUC	C	4	3	10,10,11	0.63	0	14,14,16	0.73	0

In the following table, the Chirals column lists the number of chiral outliers, the number of chiral centers analysed, the number of these observed in the model and the number defined in the Chemical Component Dictionary. Similar counts are reported in the Torsion and Rings columns. '-' means no outliers of that kind were identified.

Mol	Type	Chain	Res	Link	Chirals	Torsions	Rings
2	NAG	B	1	1,2	-	0/6/23/26	0/1/1/1
2	NAG	B	2	2	-	2/6/23/26	0/1/1/1
3	NAG	C	1	1,3	-	0/6/23/26	0/1/1/1
3	NAG	C	2	3	-	0/6/23/26	0/1/1/1
3	BMA	C	3	3	-	0/2/19/22	0/1/1/1
3	FUC	C	4	3	-	-	0/1/1/1

All (2) bond length outliers are listed below:

Mol	Chain	Res	Type	Atoms	Z	Observed(Å)	Ideal(Å)
3	C	3	BMA	C1-C2	2.40	1.57	1.52
3	C	3	BMA	C2-C3	2.22	1.55	1.52

All (2) bond angle outliers are listed below:

Mol	Chain	Res	Type	Atoms	Z	Observed(°)	Ideal(°)
3	C	3	BMA	C1-O5-C5	2.87	116.09	112.19
3	C	3	BMA	O2-C2-C3	-2.06	106.02	110.14

There are no chirality outliers.

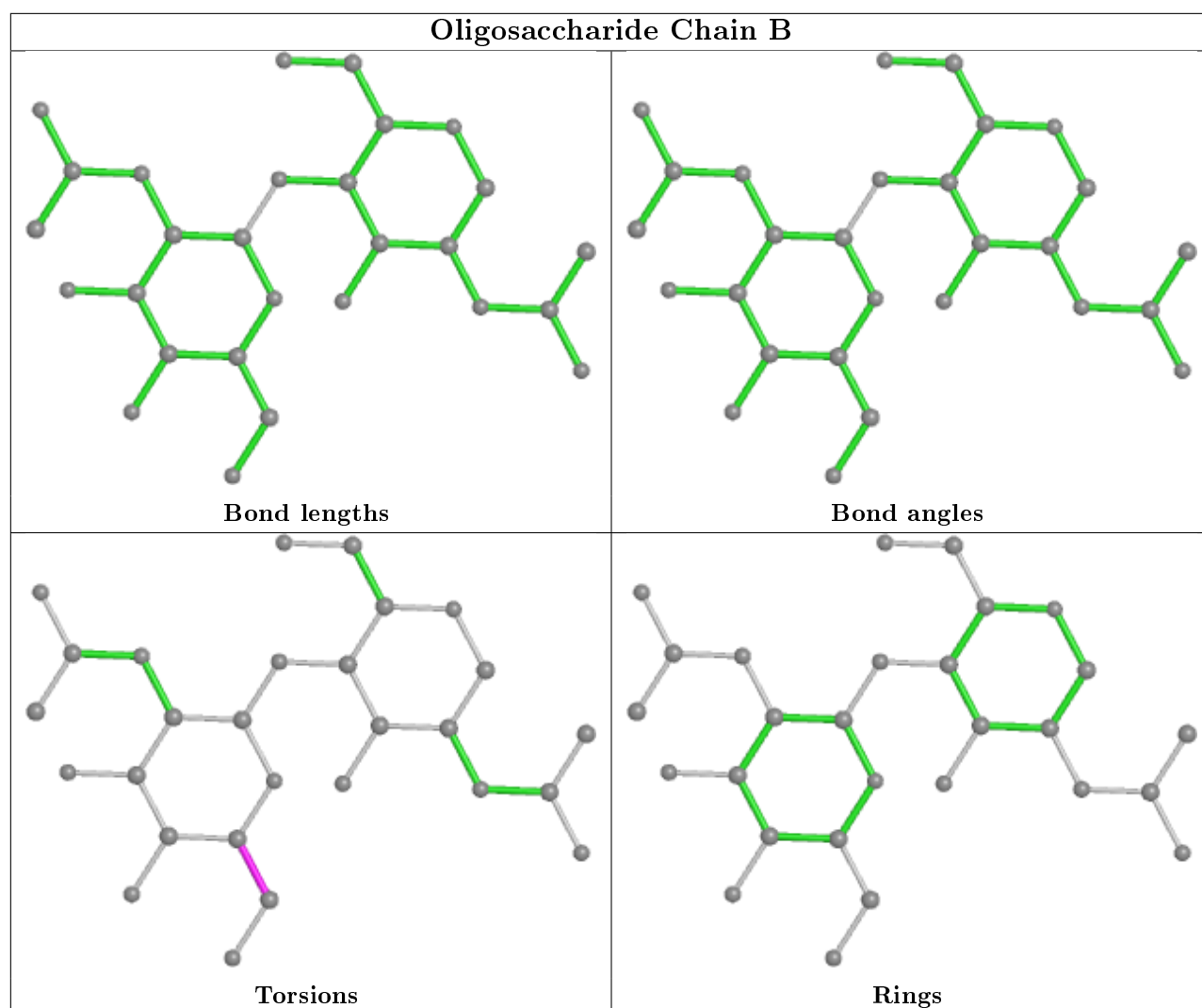
All (2) torsion outliers are listed below:

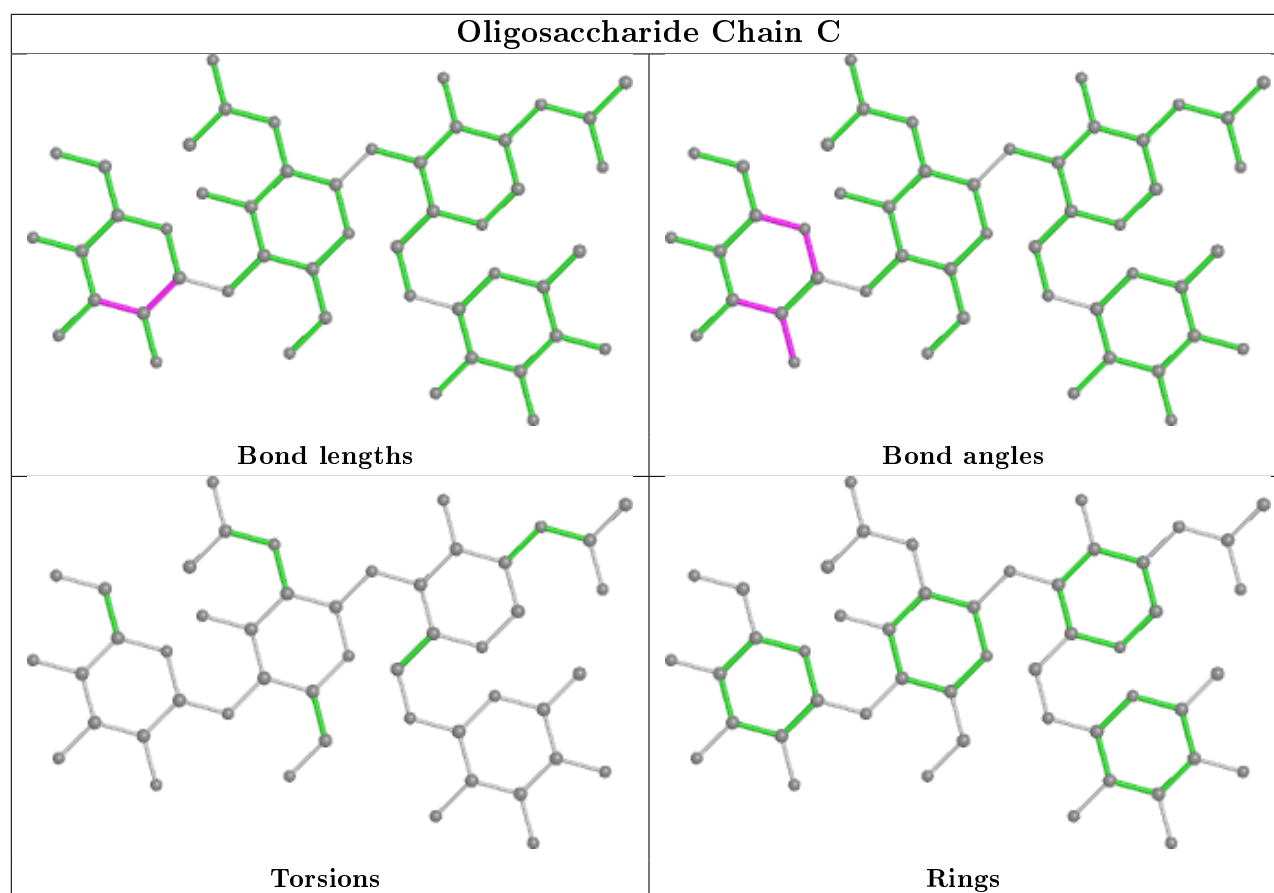
Mol	Chain	Res	Type	Atoms
2	B	2	NAG	O5-C5-C6-O6
2	B	2	NAG	C4-C5-C6-O6

There are no ring outliers.

No monomer is involved in short contacts.

The following is a two-dimensional graphical depiction of Mogul quality analysis of bond lengths, bond angles, torsion angles, and ring geometry for oligosaccharide.





## 5.6 Ligand geometry [i](#)

Of 18 ligands modelled in this entry, 3 are monoatomic - leaving 15 for Mogul analysis.

In the following table, the Counts columns list the number of bonds (or angles) for which Mogul statistics could be retrieved, the number of bonds (or angles) that are observed in the model and the number of bonds (or angles) that are defined in the Chemical Component Dictionary. The Link column lists molecule types, if any, to which the group is linked. The Z score for a bond length (or angle) is the number of standard deviations the observed value is removed from the expected value. A bond length (or angle) with  $|Z| > 2$  is considered an outlier worth inspection. RMSZ is the root-mean-square of all Z scores of the bond lengths (or angles).

Mol	Type	Chain	Res	Link	Bond lengths			Bond angles		
					Counts	RMSZ	$\# Z  > 2$	Counts	RMSZ	$\# Z  > 2$
10	EDO	A	720	-	3,3,3	0.42	0	2,2,2	0.51	0
6	FT8	A	710	4	22,29,29	1.85	3 (13%)	22,40,40	1.32	2 (9%)
7	IMD	A	713	-	3,5,5	0.49	0	4,5,5	0.59	0
10	EDO	A	723[B]	-	3,3,3	0.39	0	2,2,2	0.89	0
10	EDO	A	718	-	3,3,3	0.51	0	2,2,2	0.18	0
10	EDO	A	722	-	3,3,3	0.50	0	2,2,2	0.23	0
8	BO3	A	714	-	3,3,3	0.55	0	3,3,3	0.66	0
10	EDO	A	719	-	3,3,3	0.19	0	2,2,2	0.74	0



Mol	Type	Chain	Res	Link	Bond lengths			Bond angles		
					Counts	RMSZ	# Z  > 2	Counts	RMSZ	# Z  > 2
6	FT8	A	712[A]	6	22,29,29	2.68	6 (27%)	22,40,40	1.22	3 (13%)
10	EDO	A	721	-	3,3,3	0.49	0	2,2,2	0.16	0
8	BO3	A	715	-	3,3,3	0.69	0	3,3,3	0.80	0
9	P6G	A	717	-	18,18,18	0.49	0	17,17,17	0.26	0
6	FT8	A	711[B]	-	22,29,29	2.53	4 (18%)	22,40,40	1.54	3 (13%)
6	FT8	A	711[A]	6	22,29,29	2.84	6 (27%)	22,40,40	0.90	0
8	BO3	A	716	-	3,3,3	0.36	0	3,3,3	0.17	0

In the following table, the Chirals column lists the number of chiral outliers, the number of chiral centers analysed, the number of these observed in the model and the number defined in the Chemical Component Dictionary. Similar counts are reported in the Torsion and Rings columns. '-' means no outliers of that kind were identified.

Mol	Type	Chain	Res	Link	Chirals	Torsions	Rings
10	EDO	A	720	-	-	0/1/1/1	-
6	FT8	A	710	4	-	1/10/44/44	0/2/3/3
7	IMD	A	713	-	-	-	0/1/1/1
10	EDO	A	723[B]	-	-	0/1/1/1	-
10	EDO	A	718	-	-	1/1/1/1	-
10	EDO	A	722	-	-	1/1/1/1	-
10	EDO	A	719	-	-	1/1/1/1	-
6	FT8	A	712[A]	6	-	1/10/44/44	0/2/3/3
10	EDO	A	721	-	-	0/1/1/1	-
9	P6G	A	717	-	-	0/16/16/16	-
6	FT8	A	711[B]	-	-	0/10/44/44	0/2/3/3
6	FT8	A	711[A]	6	-	3/10/44/44	0/2/3/3

All (19) bond length outliers are listed below:

Mol	Chain	Res	Type	Atoms	Z	Observed(Å)	Ideal(Å)
6	A	711[A]	FT8	C2-N1	10.96	1.46	1.35
6	A	712[A]	FT8	C2-N1	10.47	1.46	1.35
6	A	711[B]	FT8	C2-N1	9.68	1.45	1.35
6	A	710	FT8	C2-N1	5.98	1.41	1.35
6	A	711[A]	FT8	C11-N2	5.35	1.45	1.34
6	A	711[B]	FT8	C11-N2	4.86	1.44	1.34
6	A	712[A]	FT8	C11-N2	4.45	1.43	1.34
6	A	710	FT8	C11-N2	3.63	1.42	1.34
6	A	712[A]	FT8	C9-N1	3.01	1.51	1.48
6	A	711[A]	FT8	C9-N1	2.89	1.51	1.48
6	A	712[A]	FT8	C7-C6	-2.43	1.46	1.53

Continued on next page...

*Continued from previous page...*

Mol	Chain	Res	Type	Atoms	Z	Observed(Å)	Ideal(Å)
6	A	711[A]	FT8	O4-C11	-2.27	1.18	1.23
6	A	711[B]	FT8	C7-C6	-2.25	1.47	1.53
6	A	711[A]	FT8	C7-C6	-2.24	1.47	1.53
6	A	710	FT8	O3-C2	-2.22	1.18	1.22
6	A	712[A]	FT8	O4-C11	-2.12	1.19	1.23
6	A	711[B]	FT8	O4-C11	-2.06	1.19	1.23
6	A	711[A]	FT8	C7-C8	-2.05	1.47	1.53
6	A	712[A]	FT8	C7-C8	-2.03	1.47	1.53

All (8) bond angle outliers are listed below:

Mol	Chain	Res	Type	Atoms	Z	Observed(°)	Ideal(°)
6	A	711[B]	FT8	C5-C4-C3	4.01	118.38	112.64
6	A	711[B]	FT8	C4-C3-C2	-3.88	106.69	111.65
6	A	710	FT8	C14-C13-C12	-3.32	108.55	113.39
6	A	712[A]	FT8	C5-C4-C3	3.21	117.23	112.64
6	A	711[B]	FT8	C14-C13-C12	-2.90	109.17	113.39
6	A	710	FT8	C3-N2-C11	-2.54	116.23	121.67
6	A	712[A]	FT8	C13-C12-C11	-2.37	106.76	112.10
6	A	712[A]	FT8	C4-C3-N2	-2.19	106.16	110.11

There are no chirality outliers.

All (8) torsion outliers are listed below:

Mol	Chain	Res	Type	Atoms
6	A	711[A]	FT8	C11-C12-C13-C14
10	A	719	EDO	O1-C1-C2-O2
10	A	718	EDO	O1-C1-C2-O2
10	A	722	EDO	O1-C1-C2-O2
6	A	711[A]	FT8	C12-C13-C14-C19
6	A	711[A]	FT8	C12-C13-C14-C15
6	A	712[A]	FT8	C4-C3-N2-C11
6	A	710	FT8	S2-C12-C13-C14

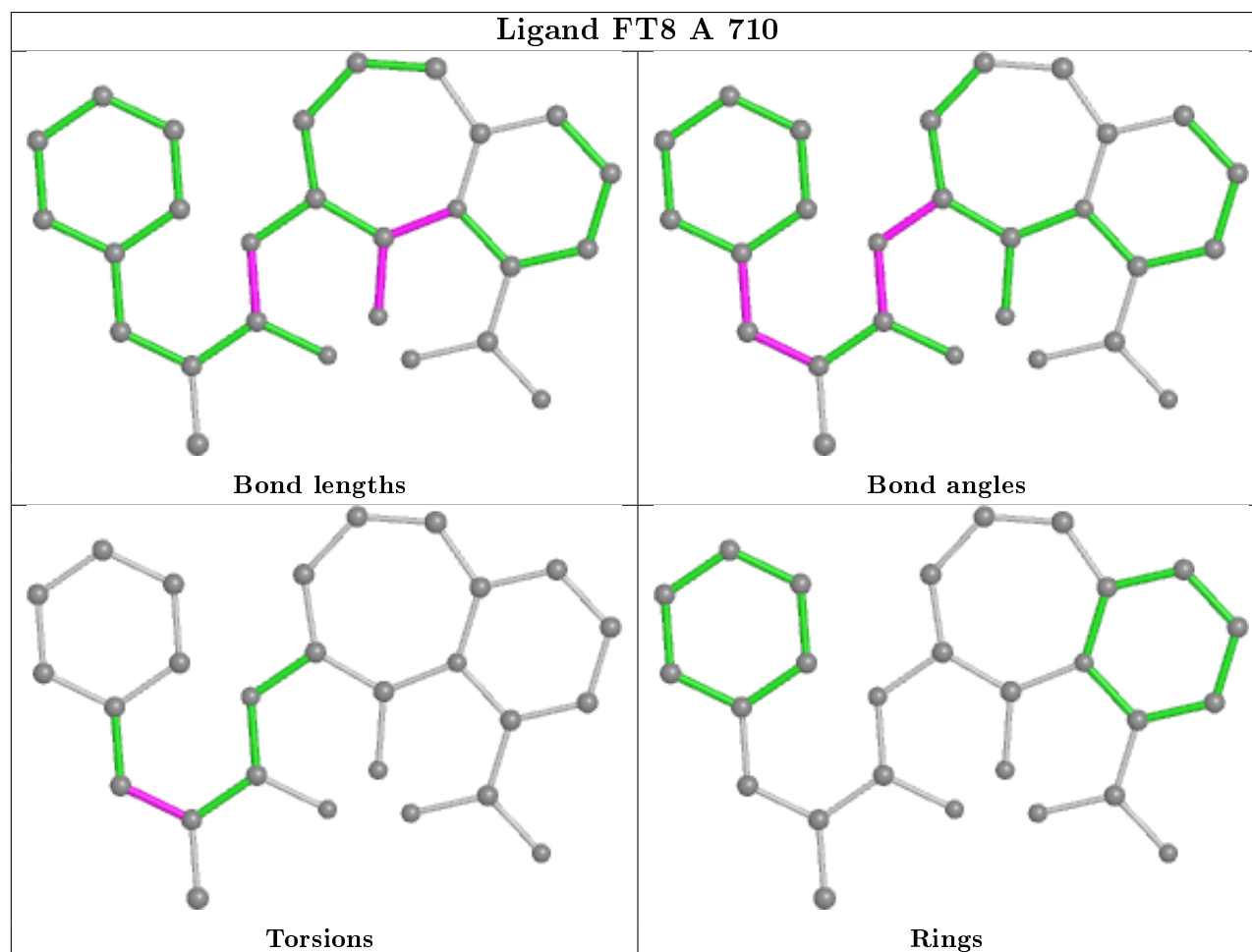
There are no ring outliers.

1 monomer is involved in 3 short contacts:

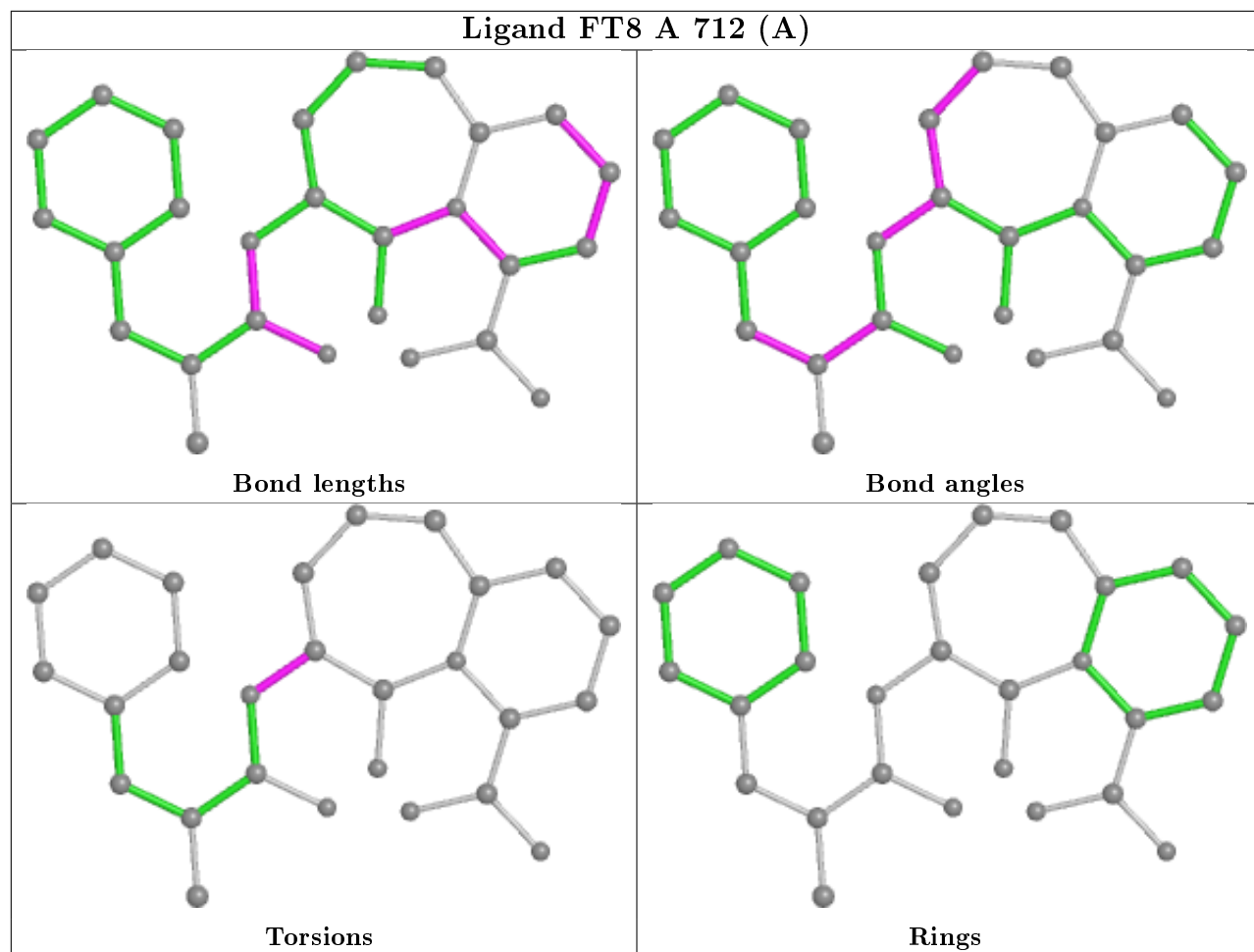
Mol	Chain	Res	Type	Clashes	Symm-Clashes
10	A	719	EDO	3	0

The following is a two-dimensional graphical depiction of Mogul quality analysis of bond lengths,

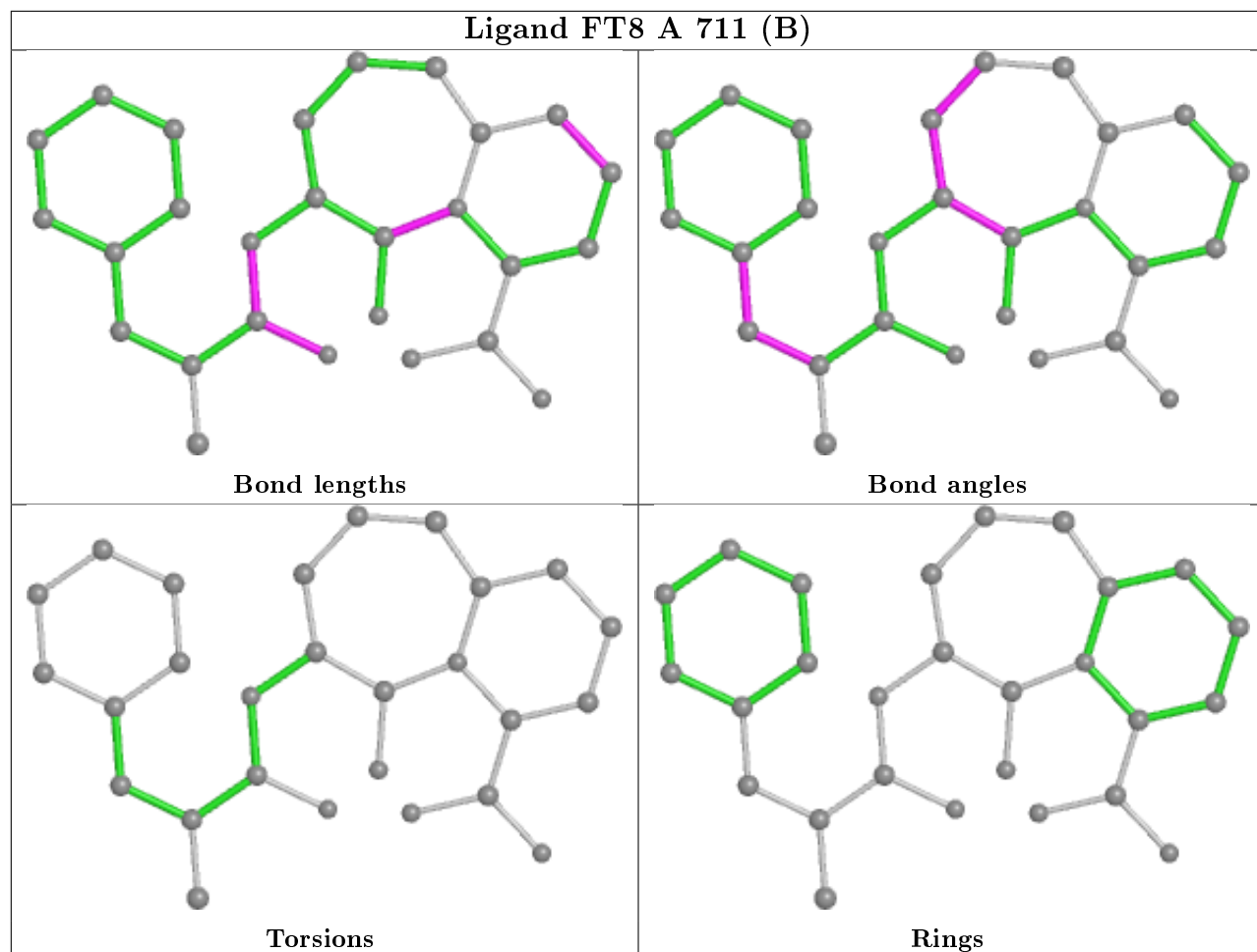
bond angles, torsion angles, and ring geometry for all instances of the Ligand of Interest. In addition, ligands with molecular weight > 250 and outliers as shown on the validation Tables will also be included. For torsion angles, if less than 5% of the Mogul distribution of torsion angles is within 10 degrees of the torsion angle in question, then that torsion angle is considered an outlier. Any bond that is central to one or more torsion angles identified as an outlier by Mogul will be highlighted in the graph. For rings, the root-mean-square deviation (RMSD) between the ring in question and similar rings identified by Mogul is calculated over all ring torsion angles. If the average RMSD is greater than 60 degrees and the minimal RMSD between the ring in question and any Mogul-identified rings is also greater than 60 degrees, then that ring is considered an outlier. The outliers are highlighted in purple. The color gray indicates Mogul did not find sufficient equivalents in the CSD to analyse the geometry.

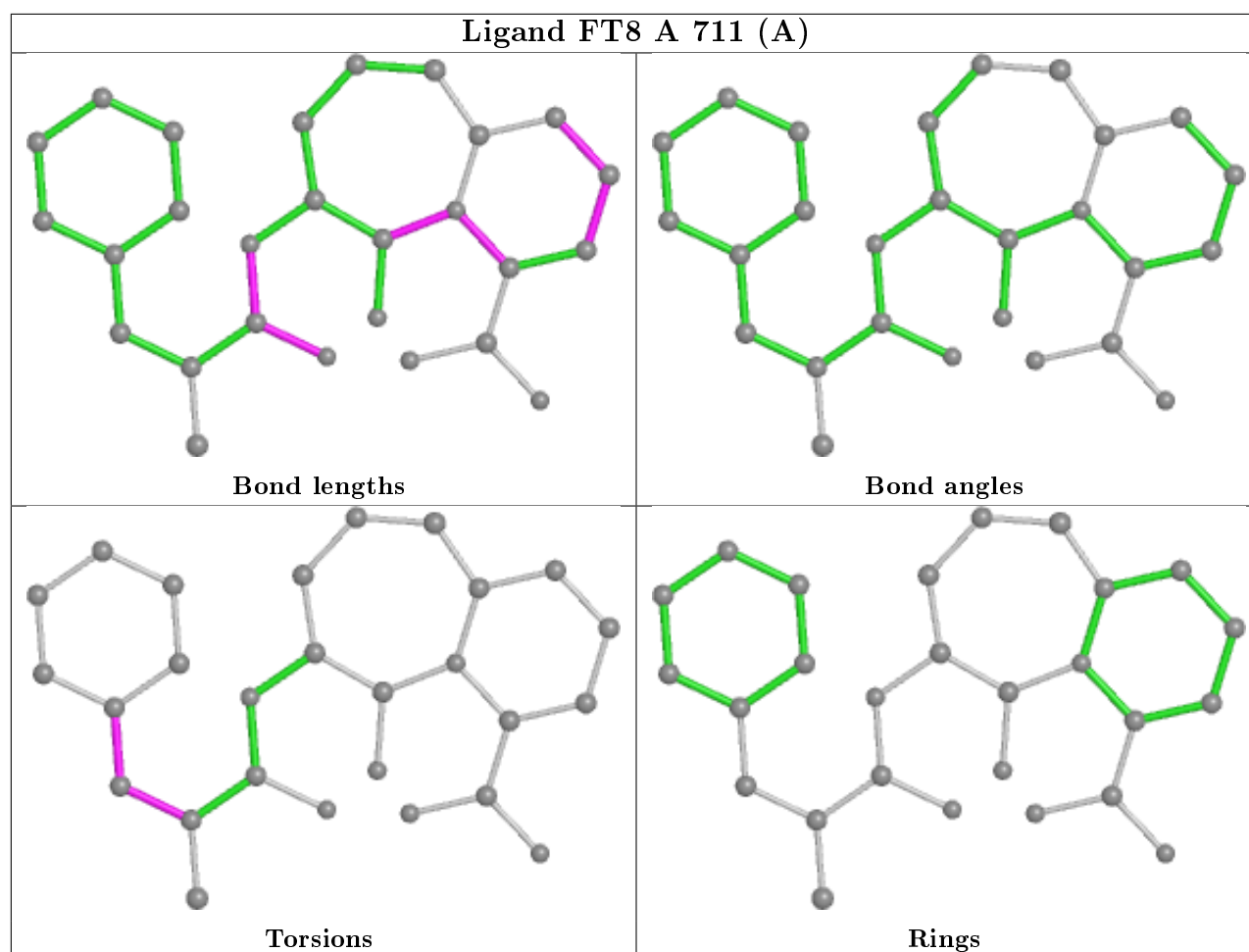


## Ligand FT8 A 712 (A)



## Ligand FT8 A 711 (B)





## 5.7 Other polymers [i](#)

There are no such residues in this entry.

## 5.8 Polymer linkage issues [i](#)

There are no chain breaks in this entry.

## 6 Fit of model and data ⓘ

### 6.1 Protein, DNA and RNA chains ⓘ

In the following table, the column labelled ‘#RSRZ> 2’ contains the number (and percentage) of RSRZ outliers, followed by percent RSRZ outliers for the chain as percentile scores relative to all X-ray entries and entries of similar resolution. The OWAB column contains the minimum, median, 95<sup>th</sup> percentile and maximum values of the occupancy-weighted average B-factor per residue. The column labelled ‘Q< 0.9’ lists the number of (and percentage) of residues with an average occupancy less than 0.9.

Mol	Chain	Analysed	<RSRZ>	#RSRZ>2		OWAB(Å <sup>2</sup> )	Q<0.9
1	A	585/591 (98%)	0.35	23 (3%)	39 41	12, 19, 38, 72	0

All (23) RSRZ outliers are listed below:

Mol	Chain	Res	Type	RSRZ
1	A	622	THR	6.4
1	A	621	TRP	5.2
1	A	106	GLN	4.9
1	A	155	GLN	4.6
1	A	107	LEU	4.5
1	A	438	GLY	4.3
1	A	619	TYR	4.3
1	A	347	GLY	3.9
1	A	618	GLN	3.3
1	A	105	ASN	3.2
1	A	620	ASN	3.2
1	A	104	VAL	3.2
1	A	617	PRO	3.1
1	A	41	GLU	3.0
1	A	102	PHE	2.7
1	A	437	GLY	2.5
1	A	345	THR	2.3
1	A	59	TRP	2.3
1	A	103	ASP	2.3
1	A	235	ARG	2.3
1	A	539	GLN	2.1
1	A	623	PRO	2.1
1	A	349	GLU	2.1

## 6.2 Non-standard residues in protein, DNA, RNA chains ⓘ

In the following table, the Atoms column lists the number of modelled atoms in the group and the number defined in the chemical component dictionary. The B-factors column lists the minimum, median, 95<sup>th</sup> percentile and maximum values of B factors of atoms in the group. The column labelled 'Q< 0.9' lists the number of atoms with occupancy less than 0.9.

Mol	Type	Chain	Res	Atoms	RSCC	RSR	B-factors(Å <sup>2</sup> )	Q<0.9
1	CSO	A	496	7/8	0.98	0.09	13,16,24,29	0

## 6.3 Carbohydrates ⓘ

In the following table, the Atoms column lists the number of modelled atoms in the group and the number defined in the chemical component dictionary. The B-factors column lists the minimum, median, 95<sup>th</sup> percentile and maximum values of B factors of atoms in the group. The column labelled 'Q< 0.9' lists the number of atoms with occupancy less than 0.9.

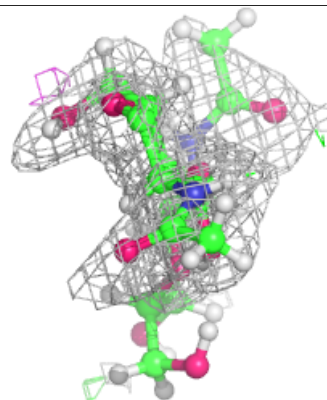
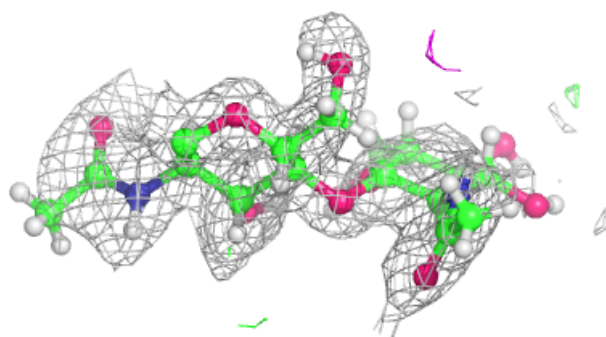
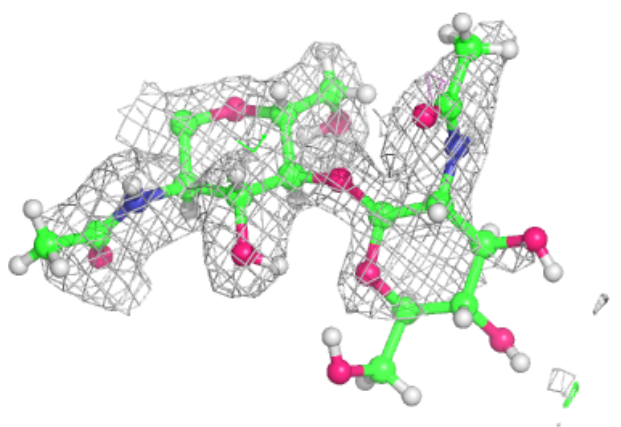
Mol	Type	Chain	Res	Atoms	RSCC	RSR	B-factors(Å <sup>2</sup> )	Q<0.9
3	BMA	C	3	11/12	0.35	0.24	62,66,79,80	0
2	NAG	B	2	14/15	0.65	0.24	50,57,67,68	27
3	NAG	C	2	14/15	0.76	0.14	46,57,67,70	0
2	NAG	B	1	14/15	0.81	0.15	36,46,55,55	0
3	FUC	C	4	10/11	0.87	0.17	35,38,45,45	20
3	NAG	C	1	14/15	0.87	0.17	34,42,52,52	0

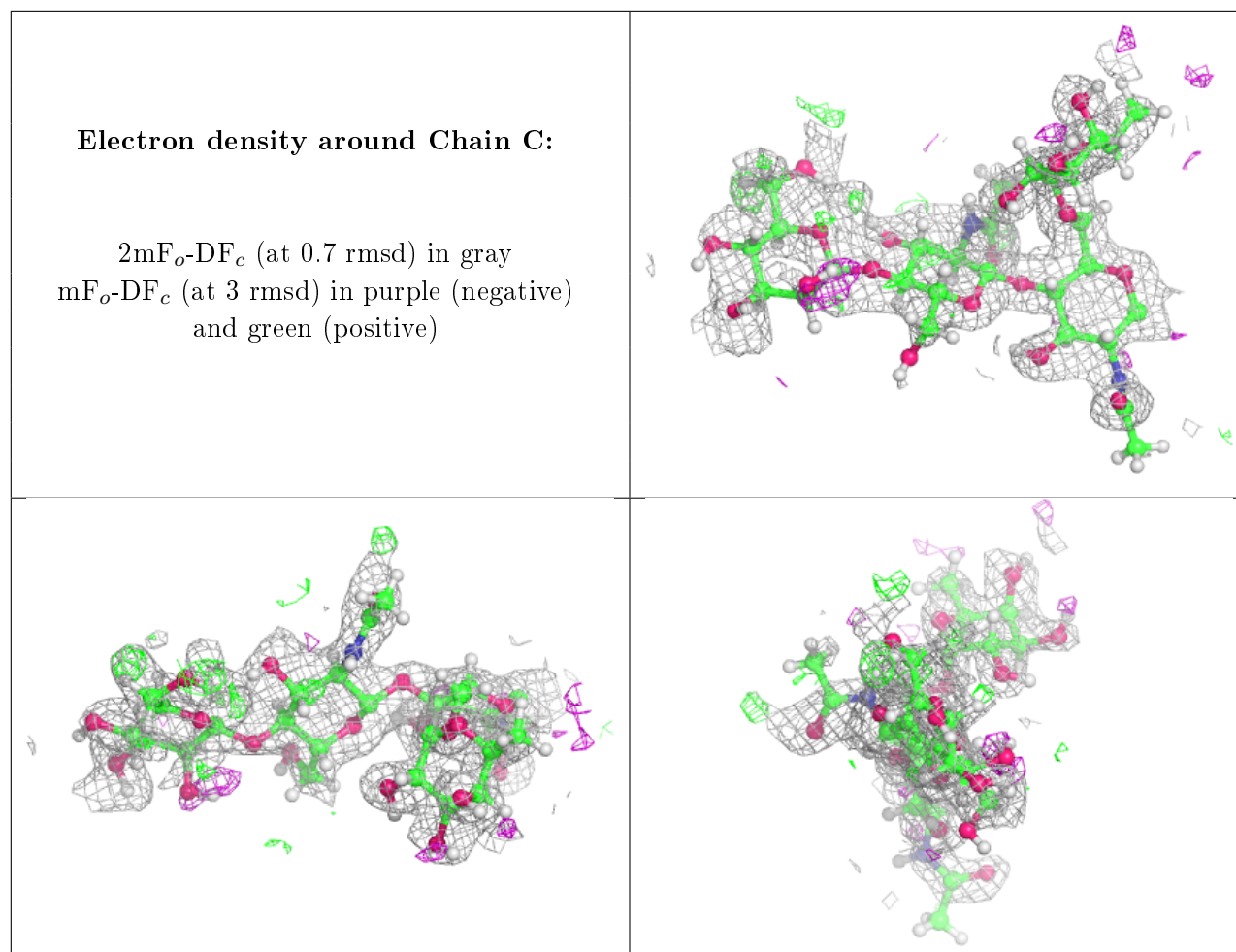
The following is a graphical depiction of the model fit to experimental electron density for oligosaccharide. Each fit is shown from different orientation to approximate a three-dimensional view.



**Electron density around Chain B:**

$2mF_o-DF_c$  (at 0.7 rmsd) in gray  
 $mF_o-DF_c$  (at 3 rmsd) in purple (negative)  
and green (positive)





## 6.4 Ligands [i](#)

In the following table, the Atoms column lists the number of modelled atoms in the group and the number defined in the chemical component dictionary. The B-factors column lists the minimum, median, 95<sup>th</sup> percentile and maximum values of B factors of atoms in the group. The column labelled 'Q < 0.9' lists the number of atoms with occupancy less than 0.9.

Mol	Type	Chain	Res	Atoms	RSCC	RSR	B-factors(Å <sup>2</sup> )	Q<0.9
10	EDO	A	722	4/4	0.51	0.20	47,56,57,58	0
10	EDO	A	718	4/4	0.72	0.21	43,52,57,59	0
8	BO3	A	716	4/4	0.78	0.17	36,36,43,44	7
7	IMD	A	713	5/5	0.84	0.14	22,24,29,29	0
10	EDO	A	721	4/4	0.85	0.13	48,58,60,60	0
8	BO3	A	714	4/4	0.86	0.15	28,29,34,39	7
10	EDO	A	723[B]	4/4	0.86	0.14	35,42,46,49	10
6	FT8	A	711[B]	27/27	0.87	0.20	19,26,37,38	49
6	FT8	A	711[A]	27/27	0.87	0.20	24,28,33,33	49
6	FT8	A	712[A]	27/27	0.87	0.19	24,30,38,39	49
10	EDO	A	720	4/4	0.89	0.10	53,63,64,65	0

*Continued on next page...*

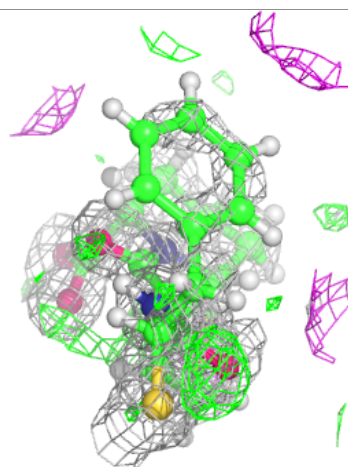
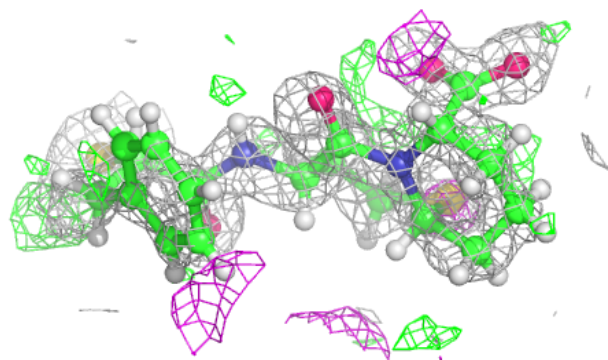
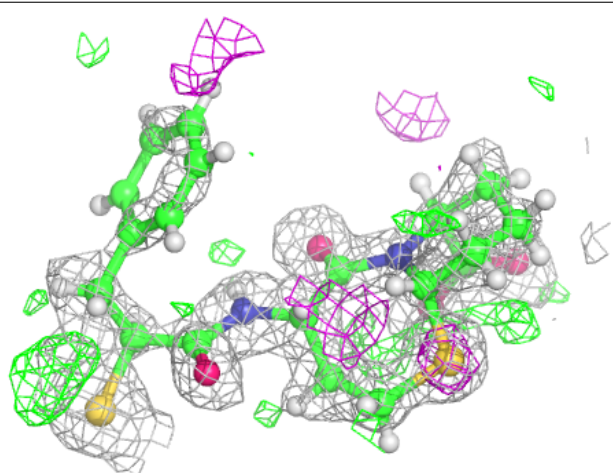
*Continued from previous page...*

Mol	Type	Chain	Res	Atoms	RSCC	RSR	B-factors( $\text{\AA}^2$ )	Q<0.9
10	EDO	A	719	4/4	0.93	0.16	21,25,29,29	10
8	BO3	A	715	4/4	0.94	0.09	22,24,29,31	7
9	P6G	A	717	19/19	0.96	0.11	17,23,55,60	0
6	FT8	A	710	27/27	0.97	0.09	13,18,29,35	0
5	CL	A	709	1/1	0.99	0.08	22,22,22,22	0
5	CL	A	708	1/1	1.00	0.11	17,17,17,17	0
4	ZN	A	707	1/1	1.00	0.10	15,15,15,15	0

The following is a graphical depiction of the model fit to experimental electron density of all instances of the Ligand of Interest. In addition, ligands with molecular weight > 250 and outliers as shown on the geometry validation Tables will also be included. Each fit is shown from different orientation to approximate a three-dimensional view.

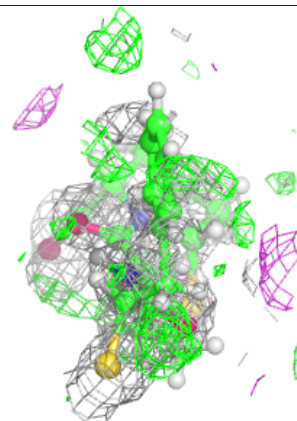
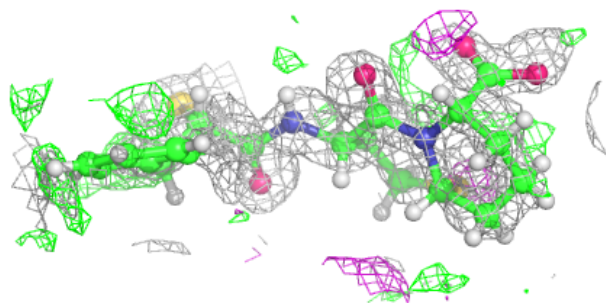
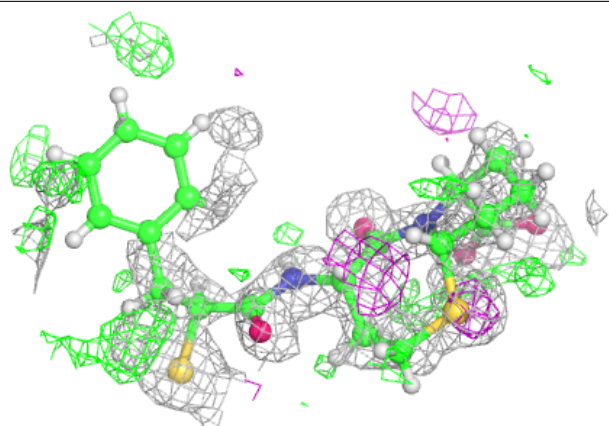
**Electron density around FT8 A 711 (B):**

2mF<sub>o</sub>-DF<sub>c</sub> (at 0.7 rmsd) in gray  
mF<sub>o</sub>-DF<sub>c</sub> (at 3 rmsd) in purple (negative)  
and green (positive)



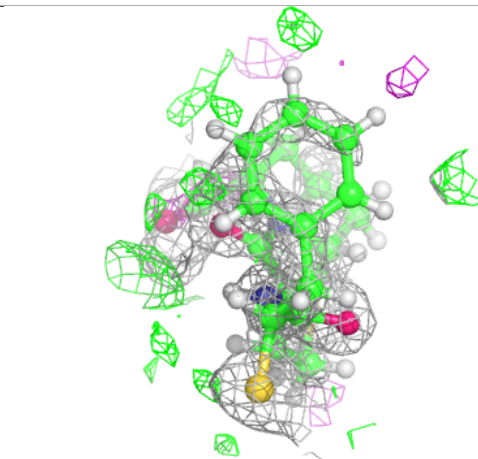
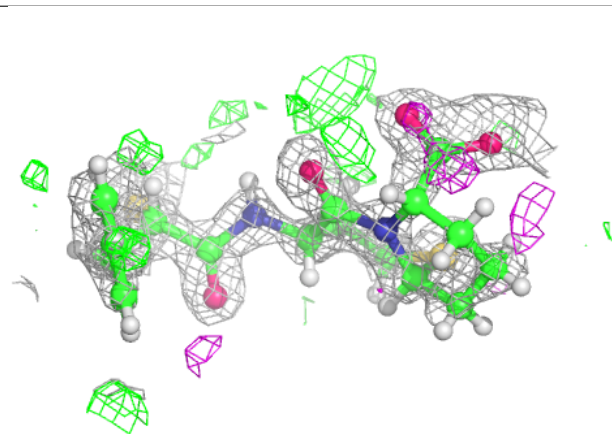
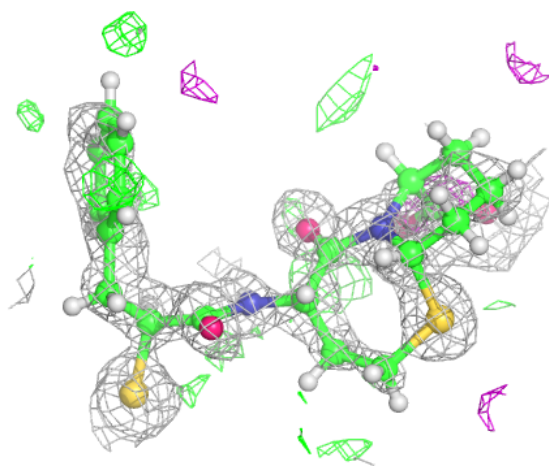
**Electron density around FT8 A 711 (A):**

$2mF_o - DF_c$  (at 0.7 rmsd) in gray  
 $mF_o - DF_c$  (at 3 rmsd) in purple (negative)  
and green (positive)



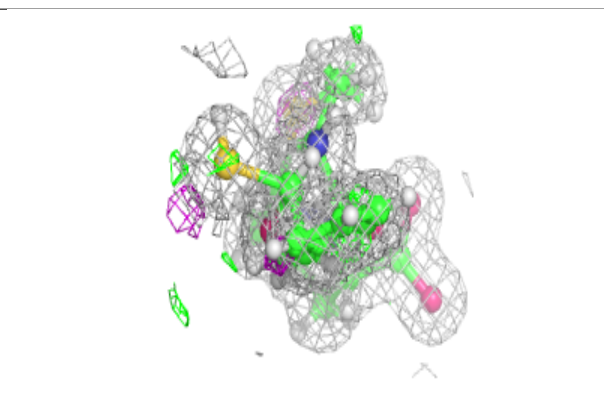
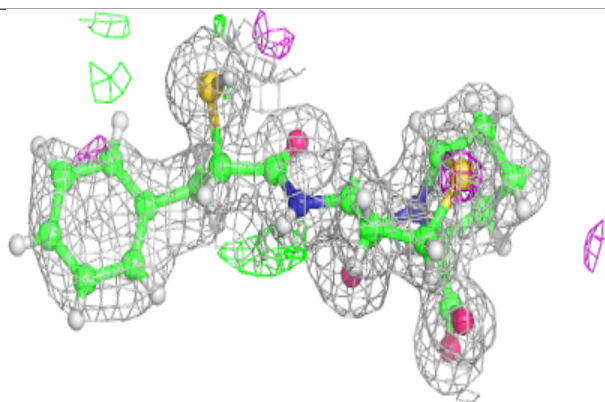
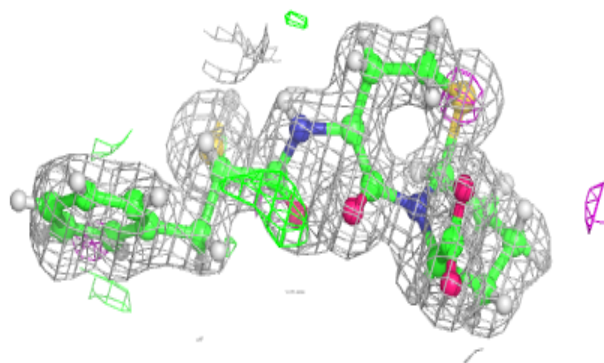
**Electron density around FT8 A 712 (A):**

$2mF_o-DF_c$  (at 0.7 rmsd) in gray  
 $mF_o-DF_c$  (at 3 rmsd) in purple (negative)  
and green (positive)



**Electron density around FT8 A 710:**

$2mF_o-DF_c$  (at 0.7 rmsd) in gray  
 $mF_o-DF_c$  (at 3 rmsd) in purple (negative)  
and green (positive)



## 6.5 Other polymers [i](#)

There are no such residues in this entry.