



Full wwPDB X-ray Structure Validation Report ⓘ

May 21, 2020 – 06:51 am BST

PDB ID : 3H87
Title : Rv0301 Rv0300 Toxin Antitoxin Complex from Mycobacterium tuberculosis
Authors : Min, A.; Sawaya, M.R.; Cascio, D.; Eisenberg, D.; Integrated Center for Structure and Function Innovation (ISFI)
Deposited on : 2009-04-28
Resolution : 1.49 Å(reported)

This is a Full wwPDB X-ray Structure Validation Report for a publicly released PDB entry.

We welcome your comments at validation@mail.wwpdb.org

A user guide is available at

<https://www.wwpdb.org/validation/2017/XrayValidationReportHelp>

with specific help available everywhere you see the ⓘ symbol.

The following versions of software and data (see [references ⓘ](#)) were used in the production of this report:

MolProbity : 4.02b-467
Mogul : 1.8.5 (274361), CSD as541be (2020)
Xtriage (Phenix) : 1.13
EDS : 2.11
Percentile statistics : 20191225.v01 (using entries in the PDB archive December 25th 2019)
Refmac : 5.8.0158
CCP4 : 7.0.044 (Gargrove)
Ideal geometry (proteins) : Engh & Huber (2001)
Ideal geometry (DNA, RNA) : Parkinson et al. (1996)
Validation Pipeline (wwPDB-VP) : 2.11

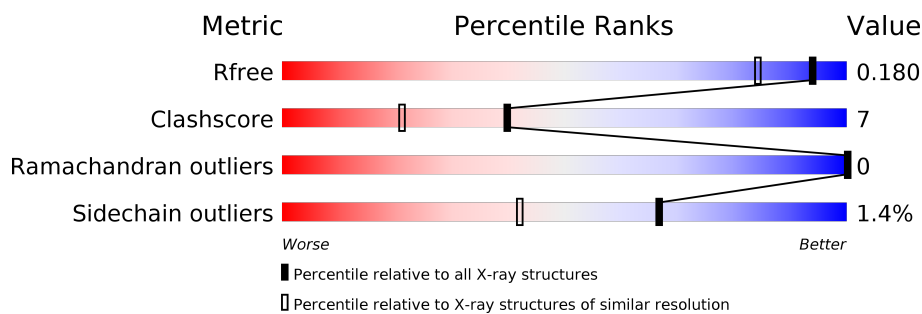
1 Overall quality at a glance ⓘ

The following experimental techniques were used to determine the structure:

X-RAY DIFFRACTION

The reported resolution of this entry is 1.49 Å.

Percentile scores (ranging between 0-100) for global validation metrics of the entry are shown in the following graphic. The table shows the number of entries on which the scores are based.



Metric	Whole archive (#Entries)	Similar resolution (#Entries, resolution range(Å))
R_{free}	130704	2936 (1.50-1.50)
Clashscore	141614	3144 (1.50-1.50)
Ramachandran outliers	138981	3066 (1.50-1.50)
Sidechain outliers	138945	3064 (1.50-1.50)

The table below summarises the geometric issues observed across the polymeric chains and their fit to the electron density. The red, orange, yellow and green segments on the lower bar indicate the fraction of residues that contain outliers for ≥ 3 , 2, 1 and 0 types of geometric quality criteria respectively. A grey segment represents the fraction of residues that are not modelled. The numeric value for each fraction is indicated below the corresponding segment, with a dot representing fractions $\leq 5\%$.

Mol	Chain	Length	Quality of chain
1	A	156	80% 7% 13%
1	B	156	78% 10% 12%
2	C	73	84% 12% ...
2	D	73	88% 10% ..

2 Entry composition

There are 7 unique types of molecules in this entry. The entry contains 3806 atoms, of which 0 are hydrogens and 0 are deuteriums.

In the tables below, the ZeroOcc column contains the number of atoms modelled with zero occupancy, the AltConf column contains the number of residues with at least one atom in alternate conformation and the Trace column contains the number of residues modelled with at most 2 atoms.

- Molecule 1 is a protein called Putative uncharacterized protein.

Mol	Chain	Residues	Atoms					ZeroOcc	AltConf	Trace
1	A	136	Total	C	N	O	S	0	3	0
			1093	682	201	207	3			
1	B	138	Total	C	N	O	S	0	2	0
			1095	687	199	205	4			

There are 32 discrepancies between the modelled and reference sequences:

Chain	Residue	Modelled	Actual	Comment	Reference
A	-14	MET	-	EXPRESSION TAG	UNP O07228
A	-13	ALA	-	EXPRESSION TAG	UNP O07228
A	-12	HIS	-	EXPRESSION TAG	UNP O07228
A	-11	HIS	-	EXPRESSION TAG	UNP O07228
A	-10	HIS	-	EXPRESSION TAG	UNP O07228
A	-9	HIS	-	EXPRESSION TAG	UNP O07228
A	-8	HIS	-	EXPRESSION TAG	UNP O07228
A	-7	HIS	-	EXPRESSION TAG	UNP O07228
A	-6	VAL	-	EXPRESSION TAG	UNP O07228
A	-5	ASP	-	EXPRESSION TAG	UNP O07228
A	-4	ASP	-	EXPRESSION TAG	UNP O07228
A	-3	ASP	-	EXPRESSION TAG	UNP O07228
A	-2	ASP	-	EXPRESSION TAG	UNP O07228
A	-1	LYS	-	EXPRESSION TAG	UNP O07228
A	0	MET	-	EXPRESSION TAG	UNP O07228
A	1	VAL	-	EXPRESSION TAG	UNP O07228
B	-14	MET	-	EXPRESSION TAG	UNP O07228
B	-13	ALA	-	EXPRESSION TAG	UNP O07228
B	-12	HIS	-	EXPRESSION TAG	UNP O07228
B	-11	HIS	-	EXPRESSION TAG	UNP O07228
B	-10	HIS	-	EXPRESSION TAG	UNP O07228
B	-9	HIS	-	EXPRESSION TAG	UNP O07228
B	-8	HIS	-	EXPRESSION TAG	UNP O07228
B	-7	HIS	-	EXPRESSION TAG	UNP O07228
B	-6	VAL	-	EXPRESSION TAG	UNP O07228

Continued on next page...

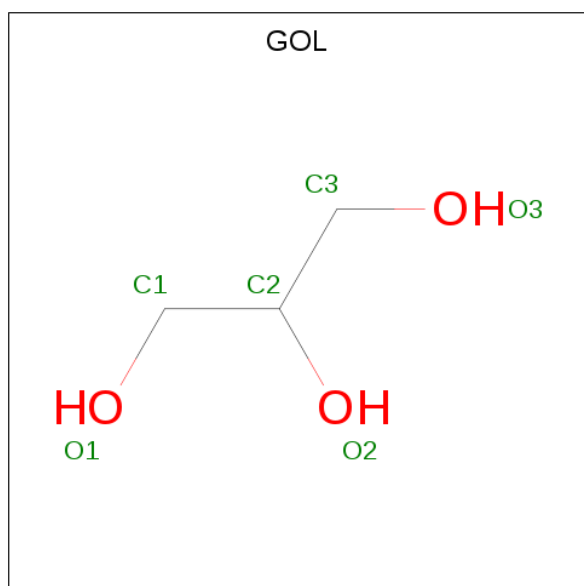
Continued from previous page...

Chain	Residue	Modelled	Actual	Comment	Reference
B	-5	ASP	-	EXPRESSION TAG	UNP O07228
B	-4	ASP	-	EXPRESSION TAG	UNP O07228
B	-3	ASP	-	EXPRESSION TAG	UNP O07228
B	-2	ASP	-	EXPRESSION TAG	UNP O07228
B	-1	LYS	-	EXPRESSION TAG	UNP O07228
B	0	MET	-	EXPRESSION TAG	UNP O07228
B	1	VAL	-	EXPRESSION TAG	UNP O07228

- Molecule 2 is a protein called Putative uncharacterized protein.

Mol	Chain	Residues	Atoms					ZeroOcc	AltConf	Trace
2	C	72	Total	C	N	O	S	0	8	0
			575	352	118	104	1			
2	D	72	Total	C	N	O	S	0	8	0
			568	348	113	106	1			

- Molecule 3 is GLYCEROL (three-letter code: GOL) (formula: C₃H₈O₃).



Mol	Chain	Residues	Atoms			ZeroOcc	AltConf
3	A	1	Total	C	O	0	0
			6	3	3		
3	A	1	Total	C	O	0	0
			6	3	3		
3	B	1	Total	C	O	0	0
			6	3	3		
3	B	1	Total	C	O	0	0
			6	3	3		

Continued on next page...

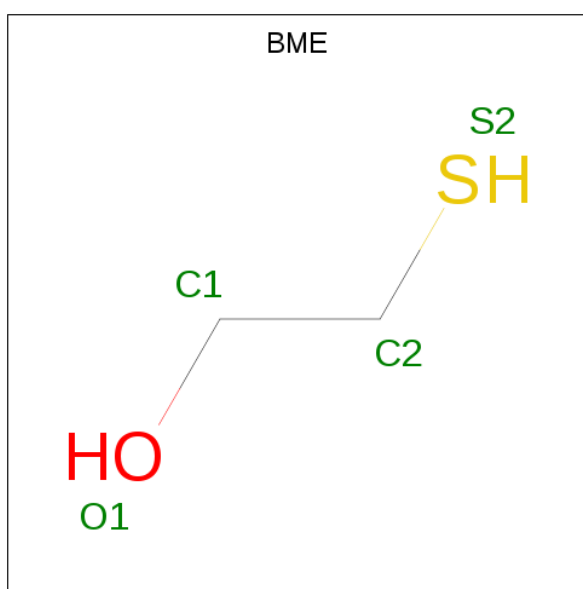
Continued from previous page...

Mol	Chain	Residues	Atoms			ZeroOcc	AltConf
3	C	1	Total	C	O	0	0
			6	3	3		

- Molecule 4 is MAGNESIUM ION (three-letter code: MG) (formula: Mg).

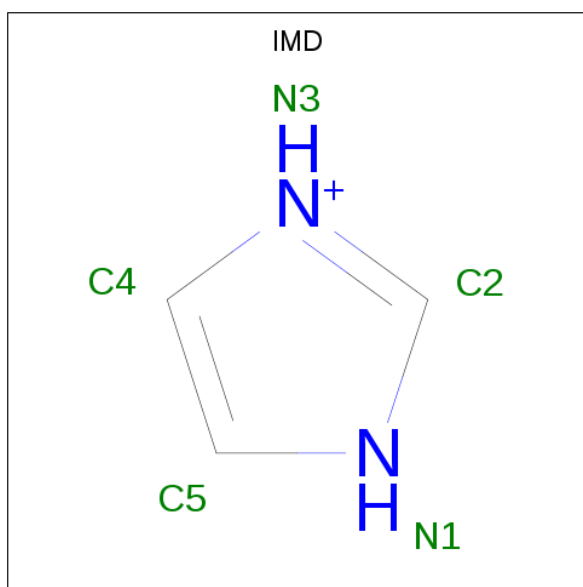
Mol	Chain	Residues	Atoms		ZeroOcc	AltConf
4	A	1	Total	Mg	0	0
			1	1		

- Molecule 5 is BETA-MERCAPTOETHANOL (three-letter code: BME) (formula: C₂H₆OS).



Mol	Chain	Residues	Atoms				ZeroOcc	AltConf
5	B	1	Total	C	O	S	0	0
			4	2	1	1		

- Molecule 6 is IMIDAZOLE (three-letter code: IMD) (formula: C₃H₅N₂).



Mol	Chain	Residues	Atoms			ZeroOcc	AltConf
6	B	1	Total	C	N	0	0
			5	3	2		


- Molecule 7 is water.

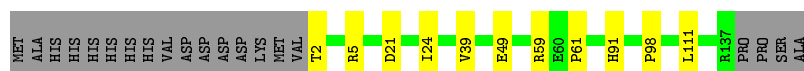
Mol	Chain	Residues	Atoms		ZeroOcc	AltConf
7	A	143	Total	O	0	3
			143	143		
7	B	141	Total	O	0	3
			141	141		
7	C	83	Total	O	0	3
			83	83		
7	D	68	Total	O	0	1
			68	68		

3 Residue-property plots [i](#)


These plots are drawn for all protein, RNA and DNA chains in the entry. The first graphic for a chain summarises the proportions of the various outlier classes displayed in the second graphic. The second graphic shows the sequence view annotated by issues in geometry. Residues are color-coded according to the number of geometric quality criteria for which they contain at least one outlier: green = 0, yellow = 1, orange = 2 and red = 3 or more. Stretches of 2 or more consecutive residues without any outlier are shown as a green connector. Residues present in the sample, but not in the model, are shown in grey.

- Molecule 1: Putative uncharacterized protein

Chain A: 




- Molecule 1: Putative uncharacterized protein

Chain B: 



- Molecule 2: Putative uncharacterized protein

Chain C: 



- Molecule 2: Putative uncharacterized protein

Chain D: 



4 Data and refinement statistics

Property	Value	Source
Space group	P 41 21 2	Depositor
Cell constants a, b, c, α , β , γ	85.56 Å 85.56 Å 155.61 Å 90.00° 90.00° 90.00°	Depositor
Resolution (Å)	60.52 – 1.49 57.56 – 1.49	Depositor EDS
% Data completeness (in resolution range)	100.0 (60.52-1.49) 100.0 (57.56-1.49)	Depositor EDS
R_{merge}	0.05	Depositor
R_{sym}	(Not available)	Depositor
$\langle I/\sigma(I) \rangle$ ¹	2.86 (at 1.49 Å)	Xtriage
Refinement program	REFMAC	Depositor
R, R_{free}	0.156 , 0.174 0.164 , 0.180	Depositor DCC
R_{free} test set	4796 reflections (5.07%)	wwPDB-VP
Wilson B-factor (Å ²)	18.0	Xtriage
Anisotropy	0.113	Xtriage
Bulk solvent k_{sol} (e/Å ³), B_{sol} (Å ²)	0.35 , 40.6	EDS
L-test for twinning ²	$\langle L \rangle = 0.50$, $\langle L^2 \rangle = 0.33$	Xtriage
Estimated twinning fraction	No twinning to report.	Xtriage
F_o, F_c correlation	0.94	EDS
Total number of atoms	3806	wwPDB-VP
Average B, all atoms (Å ²)	20.0	wwPDB-VP

Xtriage's analysis on translational NCS is as follows: *The largest off-origin peak in the Patterson function is 3.49% of the height of the origin peak. No significant pseudotranslation is detected.*

¹Intensities estimated from amplitudes.

²Theoretical values of $\langle |L| \rangle$, $\langle L^2 \rangle$ for acentric reflections are 0.5, 0.333 respectively for untwinned datasets, and 0.375, 0.2 for perfectly twinned datasets.

5 Model quality [i](#)

5.1 Standard geometry [i](#)

Bond lengths and bond angles in the following residue types are not validated in this section: GOL, MG, IMD, BME

The Z score for a bond length (or angle) is the number of standard deviations the observed value is removed from the expected value. A bond length (or angle) with $|Z| > 5$ is considered an outlier worth inspection. RMSZ is the root-mean-square of all Z scores of the bond lengths (or angles).

Mol	Chain	Bond lengths		Bond angles	
		RMSZ	$\# Z > 5$	RMSZ	$\# Z > 5$
1	A	0.69	0/1118	0.76	1/1516 (0.1%)
1	B	0.78	0/1122	0.83	2/1525 (0.1%)
2	C	0.73	0/585	0.87	3/788 (0.4%)
2	D	0.56	0/578	0.69	0/780
All	All	0.71	0/3403	0.79	6/4609 (0.1%)

There are no bond length outliers.

All (6) bond angle outliers are listed below:

Mol	Chain	Res	Type	Atoms	Z	Observed(°)	Ideal(°)
2	C	73[A]	ARG	NE-CZ-NH2	6.90	123.75	120.30
1	A	59	ARG	NE-CZ-NH2	-6.59	117.00	120.30
2	C	73[A]	ARG	NE-CZ-NH1	-6.22	117.19	120.30
2	C	54	ARG	NE-CZ-NH2	-6.01	117.30	120.30
1	B	41	ARG	NE-CZ-NH1	5.68	123.14	120.30
1	B	59	ARG	NE-CZ-NH1	-5.08	117.76	120.30

There are no chirality outliers.

There are no planarity outliers.

5.2 Too-close contacts [i](#)

In the following table, the Non-H and H(model) columns list the number of non-hydrogen atoms and hydrogen atoms in the chain respectively. The H(added) column lists the number of hydrogen atoms added and optimized by MolProbity. The Clashes column lists the number of clashes within the asymmetric unit, whereas Symm-Clashes lists symmetry related clashes.

Mol	Chain	Non-H	H(model)	H(added)	Clashes	Symm-Clashes
1	A	1093	0	1102	18	0

Continued on next page...

Continued from previous page...

Mol	Chain	Non-H	H(model)	H(added)	Clashes	Symm-Clashes
1	B	1095	0	1109	20	0
2	C	575	0	603	11	0
2	D	568	0	591	19	0
3	A	12	0	16	0	0
3	B	12	0	16	0	0
3	C	6	0	8	0	0
4	A	1	0	0	0	0
5	B	4	0	6	1	0
6	B	5	0	5	0	0
7	A	143	0	0	2	0
7	B	141	0	0	1	0
7	C	83	0	0	1	0
7	D	68	0	0	1	0
All	All	3806	0	3456	50	0

The all-atom clashscore is defined as the number of clashes found per 1000 atoms (including hydrogen atoms). The all-atom clashscore for this structure is 7.

All (50) close contacts within the same asymmetric unit are listed below, sorted by their clash magnitude.

Atom-1	Atom-2	Interatomic distance (Å)	Clash overlap (Å)
1:A:98:PRO:HG3	2:D:72[B]:TRP:CZ2	1.95	1.01
1:A:98:PRO:HG3	2:D:72[B]:TRP:CE2	1.95	1.00
1:A:5[B]:ARG:HG3	1:A:111:LEU:CD2	2.04	0.87
1:A:98:PRO:CG	2:D:72[B]:TRP:CE2	2.59	0.84
2:C:6:ILE:CG2	2:C:9:ILE:HD11	2.20	0.72
1:A:5[B]:ARG:CG	1:A:111:LEU:HD23	2.22	0.68
1:A:5[B]:ARG:HG3	1:A:111:LEU:HD23	1.76	0.63
1:B:10:LYS:NZ	2:D:73[B]:ARG:HD2	2.15	0.61
1:B:10:LYS:CE	2:D:73[B]:ARG:HD2	2.31	0.60
2:D:66:GLU:O	2:D:69[B]:ARG:HB2	2.04	0.58
1:A:98:PRO:HG2	2:D:72[B]:TRP:CE2	2.39	0.58
1:A:5[B]:ARG:CG	1:A:111:LEU:CD2	2.77	0.58
1:B:117:ASP:OD2	2:D:73[B]:ARG:NH2	2.38	0.57
1:B:10:LYS:HE2	2:D:73[B]:ARG:HD2	1.88	0.56
2:C:73[A]:ARG:HG3	2:D:65:PRO:O	2.06	0.56
1:A:5[B]:ARG:HG2	1:A:111:LEU:HD23	1.89	0.55
1:B:86:LEU:HD21	1:B:126[B]:LEU:HD23	1.90	0.54
1:A:5[B]:ARG:HD3	7:A:367:HOH:O	2.07	0.54
2:C:69[A]:ARG:HA	2:C:73[A]:ARG:NH1	2.23	0.53
1:A:98:PRO:HG2	2:D:72[B]:TRP:NE1	2.23	0.53

Continued on next page...

Continued from previous page...

Atom-1	Atom-2	Interatomic distance (Å)	Clash overlap (Å)
1:A:39:VAL:HG13	2:D:72[B]:TRP:CZ2	2.44	0.52
1:B:89:ARG:CD	1:B:126[B]:LEU:HD11	2.39	0.52
2:C:6:ILE:HG21	2:C:9:ILE:HD11	1.91	0.51
2:D:65:PRO:O	2:D:69[B]:ARG:HG3	2.11	0.51
2:C:6:ILE:HG23	2:C:9:ILE:HD11	1.94	0.50
1:A:91:HIS:CE1	7:A:382:HOH:O	2.65	0.50
2:C:69[A]:ARG:O	2:C:73[A]:ARG:NE	2.45	0.50
1:B:98:PRO:HG2	2:D:73[B]:ARG:HG3	1.94	0.49
2:D:55:LEU:O	2:D:59:VAL:HG22	2.12	0.49
1:B:89:ARG:HD2	1:B:126[B]:LEU:HD11	1.94	0.49
1:B:86:LEU:CD2	1:B:126[B]:LEU:CD2	2.91	0.48
1:B:89:ARG:NE	1:B:126[B]:LEU:HD11	2.28	0.48
1:B:133:ARG:HH12	5:B:159:BME:H21	1.80	0.47
1:A:49[A]:GLU:HG2	7:D:75:HOH:O	2.15	0.47
1:B:10:LYS:HZ3	2:D:73[B]:ARG:HD2	1.78	0.46
7:B:413:HOH:O	2:C:20:ILE:HG23	2.15	0.46
1:A:61:PRO:HG3	2:D:45:VAL:CG1	2.45	0.46
1:B:73:PRO:HD2	7:C:142:HOH:O	2.16	0.46
2:C:5:LEU:HD12	2:C:7:ARG:HG3	1.97	0.46
1:B:14:VAL:O	2:C:56[B]:ARG:HD3	2.16	0.46
1:B:86:LEU:HD23	1:B:126[B]:LEU:CD2	2.48	0.43
1:A:21:ASP:O	1:A:24:ILE:HG22	2.18	0.43
1:A:5[A]:ARG:HB2	1:A:111:LEU:HD23	2.01	0.43
1:B:86:LEU:CD2	1:B:126[B]:LEU:HD23	2.50	0.42
1:B:97:ILE:HG21	2:D:72[B]:TRP:CH2	2.55	0.41
1:A:39:VAL:HG13	2:D:72[B]:TRP:HZ2	1.85	0.41
1:B:108:LEU:O	2:C:23[B]:ARG:HD3	2.20	0.41
2:C:56[B]:ARG:NH1	2:C:60:ALA:HB2	2.36	0.41
1:B:93:ARG:N	1:B:93:ARG:HD3	2.36	0.41
1:B:85:LEU:HD13	1:B:126[A]:LEU:HD11	2.03	0.40

There are no symmetry-related clashes.

5.3 Torsion angles ⓘ

5.3.1 Protein backbone ⓘ

In the following table, the Percentiles column shows the percent Ramachandran outliers of the chain as a percentile score with respect to all X-ray entries followed by that with respect to entries of similar resolution.

The Analysed column shows the number of residues for which the backbone conformation was analysed, and the total number of residues.

Mol	Chain	Analysed	Favoured	Allowed	Outliers	Percentiles	
1	A	137/156 (88%)	135 (98%)	2 (2%)	0	100	100
1	B	138/156 (88%)	137 (99%)	1 (1%)	0	100	100
2	C	72/73 (99%)	72 (100%)	0	0	100	100
2	D	72/73 (99%)	69 (96%)	3 (4%)	0	100	100
All	All	419/458 (92%)	413 (99%)	6 (1%)	0	100	100

There are no Ramachandran outliers to report.

5.3.2 Protein sidechains ⓘ

In the following table, the Percentiles column shows the percent sidechain outliers of the chain as a percentile score with respect to all X-ray entries followed by that with respect to entries of similar resolution.

The Analysed column shows the number of residues for which the sidechain conformation was analysed, and the total number of residues.

Mol	Chain	Analysed	Rotameric	Outliers	Percentiles	
1	A	119/134 (89%)	118 (99%)	1 (1%)	81	66
1	B	120/134 (90%)	119 (99%)	1 (1%)	81	66
2	C	58/57 (102%)	56 (97%)	2 (3%)	37	9
2	D	58/57 (102%)	57 (98%)	1 (2%)	60	33
All	All	355/382 (93%)	350 (99%)	5 (1%)	67	42

All (5) residues with a non-rotameric sidechain are listed below:

Mol	Chain	Res	Type
1	A	2	THR
1	B	137	ARG
2	C	5	LEU
2	C	73[A]	ARG
2	D	73[B]	ARG

Some sidechains can be flipped to improve hydrogen bonding and reduce clashes. There are no such sidechains identified.

5.3.3 RNA [i](#)

There are no RNA molecules in this entry.

5.4 Non-standard residues in protein, DNA, RNA chains [i](#)

There are no non-standard protein/DNA/RNA residues in this entry.

5.5 Carbohydrates [i](#)

There are no carbohydrates in this entry.

5.6 Ligand geometry [i](#)

Of 8 ligands modelled in this entry, 1 is monoatomic - leaving 7 for Mogul analysis.

In the following table, the Counts columns list the number of bonds (or angles) for which Mogul statistics could be retrieved, the number of bonds (or angles) that are observed in the model and the number of bonds (or angles) that are defined in the Chemical Component Dictionary. The Link column lists molecule types, if any, to which the group is linked. The Z score for a bond length (or angle) is the number of standard deviations the observed value is removed from the expected value. A bond length (or angle) with $|Z| > 2$ is considered an outlier worth inspection. RMSZ is the root-mean-square of all Z scores of the bond lengths (or angles).

Mol	Type	Chain	Res	Link	Bond lengths			Bond angles		
					Counts	RMSZ	$\# Z > 2$	Counts	RMSZ	$\# Z > 2$
5	BME	B	159	-	3,3,3	0.34	0	1,2,2	0.17	0
3	GOL	B	157	-	5,5,5	0.40	0	5,5,5	0.26	0
3	GOL	A	157	-	5,5,5	0.41	0	5,5,5	0.65	0
3	GOL	C	74	-	5,5,5	0.43	0	5,5,5	0.48	0
3	GOL	A	158	-	5,5,5	0.43	0	5,5,5	0.33	0
3	GOL	B	158	-	5,5,5	0.36	0	5,5,5	0.57	0
6	IMD	B	160	-	3,5,5	0.42	0	4,5,5	0.80	0

In the following table, the Chirals column lists the number of chiral outliers, the number of chiral centers analysed, the number of these observed in the model and the number defined in the Chemical Component Dictionary. Similar counts are reported in the Torsion and Rings columns. '-' means no outliers of that kind were identified.

Mol	Type	Chain	Res	Link	Chirals	Torsions	Rings
5	BME	B	159	-	-	1/1/1/1	-
3	GOL	B	157	-	-	0/4/4/4	-
3	GOL	A	157	-	-	0/4/4/4	-

Continued on next page...

Continued from previous page...

Mol	Type	Chain	Res	Link	Chirals	Torsions	Rings
3	GOL	C	74	-	-	0/4/4/4	-
3	GOL	A	158	-	-	4/4/4/4	-
3	GOL	B	158	-	-	4/4/4/4	-
6	IMD	B	160	-	-	-	0/1/1/1

There are no bond length outliers.

There are no bond angle outliers.

There are no chirality outliers.

All (9) torsion outliers are listed below:

Mol	Chain	Res	Type	Atoms
5	B	159	BME	O1-C1-C2-S2
3	B	158	GOL	O1-C1-C2-C3
3	A	158	GOL	O1-C1-C2-C3
3	A	158	GOL	C1-C2-C3-O3
3	B	158	GOL	C1-C2-C3-O3
3	A	158	GOL	O1-C1-C2-O2
3	B	158	GOL	O1-C1-C2-O2
3	B	158	GOL	O2-C2-C3-O3
3	A	158	GOL	O2-C2-C3-O3

There are no ring outliers.

1 monomer is involved in 1 short contact:

Mol	Chain	Res	Type	Clashes	Symm-Clashes
5	B	159	BME	1	0

5.7 Other polymers [i](#)

There are no such residues in this entry.

5.8 Polymer linkage issues [i](#)

There are no chain breaks in this entry.

6 Fit of model and data ⓘ

6.1 Protein, DNA and RNA chains ⓘ

Unable to reproduce the depositors R factor - this section is therefore empty.

6.2 Non-standard residues in protein, DNA, RNA chains ⓘ

Unable to reproduce the depositors R factor - this section is therefore empty.

6.3 Carbohydrates ⓘ

Unable to reproduce the depositors R factor - this section is therefore empty.

6.4 Ligands ⓘ

Unable to reproduce the depositors R factor - this section is therefore empty.

6.5 Other polymers ⓘ

Unable to reproduce the depositors R factor - this section is therefore empty.